

# Statistical release

## P4141

# Electricity generated and available for distribution (Preliminary)

July 2010

**Embargoed until:  
2 September 2010  
13:00**

**Enquiries:**

User information services  
Tel: (012) 310 8600/ 8390/ 8351

**Forthcoming issue:**

August 2010

**Expected release date:**

7 October 2010

## Contents

<b>Summary of findings: Electricity generated and available for distribution .....</b>	<b>2</b>
<b>Key figures .....</b>	<b>2</b>
Table A – Selected key figures regarding electricity generated and available for distribution for July 2010.....	2
<b>Key findings .....</b>	<b>2</b>
Consumption of electricity .....	2
Production of electricity .....	2
International trade in electricity.....	3
Table B – Comparison of the seasonally adjusted volume of electricity generated and available for distribution between the three months ended July 2010 and the previous three months.....	3
Table C – Comparison of actual estimates between the three months ended July 2010 and the three months ended July 2009.....	3
Figure 1 – Electricity produced and available for distribution in South Africa from 2007 to 2010.....	4
<b>Detailed results .....</b>	<b>5</b>
Table 1 – Total volume of electricity available for distribution in South Africa: 2005 – 2010.....	5
Table 2 – Annual percentage change in electricity available for distribution in South Africa: 2005 – 2010.....	5
Table 3 – Seasonally adjusted total volume of electricity available for distribution in South Africa: 2005 – 2010.....	5
Table 4 – Indices of the physical volume of electricity production: 2005 – 2010.....	6
Table 5 – Annual percentage change in indices of the physical volume of electricity production: 2005 – 2010.....	6
Table 6 – Seasonally adjusted indices of the physical volume of electricity production: 2005 – 2010.....	6
Table 7 – Total volume of electricity imported: 2005 – 2010.....	7
Table 8 – Total volume of electricity exported: 2005 – 2010.....	7
Table 9a – Electricity produced and consumed in power stations, purchased and sold outside South Africa and available for distribution in South Africa (monthly figures).....	8
Table 9b – Electricity produced and consumed in power stations, purchased and sold outside South Africa and available for distribution in South Africa (cumulative figures).....	8
Table 10 – Total volume of electricity delivered by Eskom to provinces for 2009 and 2010.....	9
<b>Explanatory Notes.....</b>	<b>10</b>
<b>Glossary.....</b>	<b>12</b>
<b>General information.....</b>	<b>13</b>

## Summary of findings: Electricity generated and available for distribution

### Key figures

Table A – Selected key figures regarding electricity generated and available for distribution for July 2010

Actual estimates	July 2010 1/	% change between July 2009 and July 2010	% change between May to July 2009 and May to July 2010	% change between January to July 2009 and January to July 2010
Electricity available for distribution (Gigawatt-hours)	21 316	0,8	3,3	5,7
Index of the physical volume of electricity production (2005=100)	113,0	0,2	2,9	5,7

1/ Preliminary.

Seasonally adjusted estimates	July 2010	% change between June and July 2010	% change between February to April 2010 and May to July 2010
Electricity available for distribution (Gigawatt-hours)	19 571	-1,8	-1,3
Index of the physical volume of electricity production (2005=100)	103,7	-2,4	-1,7

### Key findings

#### Consumption of electricity

The actual estimated volume of electricity consumed in July 2010 increased by 0,8% (165 Gigawatt-hours) compared with July 2009 (see Tables A, 2 and 9a). Electricity consumption for the first seven months of 2010 increased by 5,7% (7 566 Gigawatt-hours) compared with the first seven months of 2009 (see Tables A and 9b). However, electricity consumption, after seasonal adjustment, for the three months ended July 2010 decreased by 1,3% compared with the three months ended April 2010 (see Tables A and B).

#### Production of electricity

The actual estimated production of electricity in July 2010 increased by 0,2% (34 Gigawatt-hours) compared with July 2009 (see Tables A, 5 and 9a). The estimated production of electricity for the first seven months of 2010 increased by 5,7% (8 131 Gigawatt-hours) compared with the first seven months of 2009 (see Tables A and 9b). However, electricity production, after seasonal adjustment, for the three months ended July 2010 decreased by 1,7% compared with the three months ended April 2010 (see Tables A and B).

**Electricity delivered by Eskom to the provinces**

Electricity delivered to the provinces for the first seven months of 2010 increased by 6,7% (8 212 Gigawatt-hours) compared with the first seven months of 2009. Increases were reported for all the nine provinces ranging from 1,3% for KwaZulu-Natal to 15,1% for Mpumalanga.

**International trade in electricity**

The volume of electricity purchased from outside South African borders increased from 7 136 Gigawatt-hours in the first seven months of 2009 to 7 298 Gigawatt-hours in the first seven months of 2010, representing an increase of 2,3% (162 Gigawatt-hours). The volume of electricity sold to neighbouring countries in the first seven months of 2010 increased by 6,9% (537 Gigawatt-hours) compared with the first seven months of 2009 (see Table 9b).

**Table B – Comparison of the seasonally adjusted volume of electricity generated and available for distribution between the three months ended July 2010 and the previous three months**

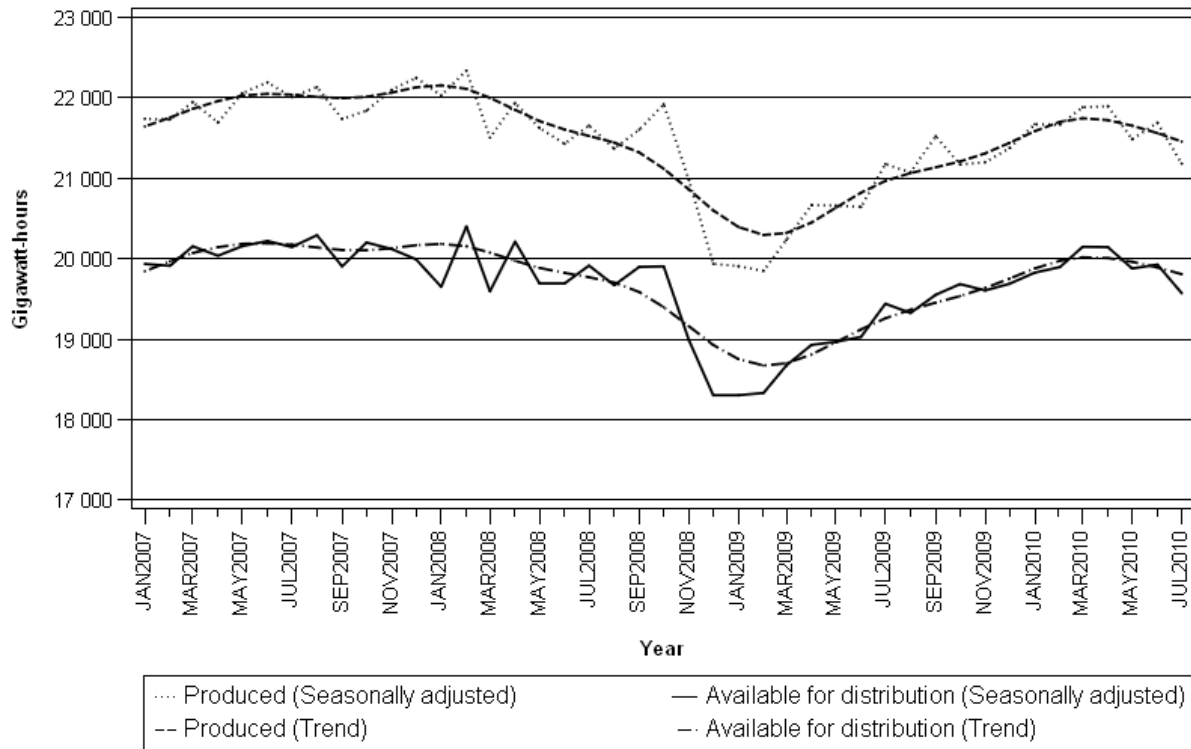
Gigawatt-hours	Seasonally adjusted quantity February to April 2010	Seasonally adjusted quantity May to July 2010	% change between February to April 2010 and May to July 2010	Quantity difference between February to April 2010 and May to July 2010
Electricity produced	65 436	64 350	-1,7	-1 086
Electricity available for distribution in South Africa	60 185	59 374	-1,3	-811

**Table C – Comparison of actual estimates between the three months ended July 2010 and the three months ended July 2009**

Gigawatt-hours	Actual volume May to July 2009	Actual volume May to July 2010	% change between May to July 2009 and May to July 2010	Quantity difference between May to July 2009 and May to July 2010
Electricity produced	65 728	67 660	2,9	1 932
Purchased outside South Africa (import)	3 065	3 210	4,7	145
Consumed in power stations and auxiliary systems	4 769	4 810	0,9	41
Sold outside South Africa (export)	3 507	3 544	1,1	37
Electricity available for distribution in South Africa	60 518	62 515	3,3	1 997

Figure 1 below shows the seasonally adjusted and trend patterns for electricity produced and available for distribution in South Africa from January 2007 to July 2010.

**Figure 1 – Electricity produced and available for distribution in South Africa from 2007 to 2010**



**P J Lehohla**  
**Statistician-General**

## Detailed results

**Table 1 – Total volume of electricity available for distribution in South Africa: 2005 – 2010**

Month	Gigawatt-hours					
	2005	2006	2007	2008	2009	2010
January	18 149	18 603	19 561	19 256	17 919	19 396
February	17 169	17 396	18 301	18 668	16 757	18 181
March	18 487	18 982	20 160	19 603	18 694	20 186
April	18 132	18 122	18 982	19 127	17 934	* 19 110
May	19 224	20 312	20 901	20 365	19 548	* 20 441
June	18 983	20 166	21 020	20 515	19 819	20 758
July	19 657	20 632	21 780	21 610	21 151	1/ 21 316
August	19 191	20 307	21 353	20 736	20 398	
September	18 383	18 987	19 732	19 725	19 382	
October	19 127	19 663	20 435	20 138	19 899	
November	18 523	19 244	19 785	18 640	19 248	
December	18 230	18 909	19 160	17 541	18 850	
Year	<b>223 255</b>	<b>231 323</b>	<b>241 170</b>	<b>235 924</b>	<b>229 599</b>	

1/ Preliminary.

\* Revised.

**Table 2 – Annual percentage change in electricity available for distribution in South Africa: 2005 – 2010**

Month	Percentage change 2/					
	2005	2006	2007	2008	2009	2010
January	1,7	2,5	5,1	-1,6	-6,9	8,2
February	-0,6	1,3	5,2	2,0	-10,2	8,5
March	0,1	2,7	6,2	-2,8	-4,6	8,0
April	3,5	-0,1	4,7	0,8	-6,2	6,6
May	1,7	5,7	2,9	-2,6	-4,0	4,6
June	-1,8	6,2	4,2	-2,4	-3,4	4,7
July	-2,5	5,0	5,6	-0,8	-2,1	0,8
August	-0,4	5,8	5,2	-2,9	-1,6	
September	0,1	3,3	3,9	-0,0	-1,7	
October	2,2	2,8	3,9	-1,5	-1,2	
November	1,1	3,9	2,8	-5,8	3,3	
December	2,7	3,7	1,3	-8,4	7,5	
Year	<b>0,6</b>	<b>3,6</b>	<b>4,3</b>	<b>-2,2</b>	<b>-2,7</b>	

2/ The annual percentage change is the change in the volume of electricity available for distribution of the relevant month of the current year compared with the corresponding month of the previous year expressed as a percentage.

**Table 3 – Seasonally adjusted total volume of electricity available for distribution in South Africa: 2005 – 2010**

Month	Gigawatt-hours						% change between current and previous month
	2005	2006	2007	2008	2009	2010	
January	18 494	18 946	19 934	19 650	18 304	19 826	0,7
February	18 639	18 901	19 911	20 400	18 332	19 895	0,3
March	18 466	18 960	20 153	19 594	18 673	20 147	1,3
April	19 082	19 118	20 036	20 211	18 929	20 143	0,0
May	18 468	19 544	20 155	19 692	18 967	19 877	-1,3
June	18 254	19 411	20 219	19 692	19 028	19 926	0,2
July	18 274	19 151	20 144	19 914	19 440	19 571	-1,8
August	18 348	19 366	20 291	19 670	19 325		
September	18 604	19 187	19 903	19 898	19 551		
October	18 889	19 429	20 200	19 904	19 684		
November	18 812	19 555	20 119	18 989	19 605		
December	18 995	19 691	19 991	18 304	19 688		

**Table 4 – Indices of the physical volume of electricity production: 2005 – 2010**

Month	Base : 2005=100					
	2005	2006	2007	2008	2009	2010
January	97,6	99,8	103,9	105,3	95,0	103,4
February	91,7	94,0	97,2	99,7	88,5	96,5
March	100,2	103,3	107,8	105,6	99,3	107,4
April	98,1	98,0	100,9	102,0	96,1	102,0
May	102,9	108,1	111,9	109,6	104,5	108,5
June	101,6	107,3	112,5	108,8	104,8	110,1
July	105,5	110,8	116,6	115,1	112,8	1/ 113,0
August	103,0	109,1	114,1	110,3	108,8	
September	99,1	101,8	105,5	104,8	104,4	
October	102,5	107,2	109,1	109,4	105,6	
November	99,4	103,3	106,9	101,4	102,6	
December	98,2	100,9	104,6	93,6	100,3	
Year	100,0	103,6	107,6	105,5	101,9	

1/ Preliminary.

**Table 5 – Annual percentage change in indices of the physical volume of electricity production: 2005 – 2010**

Month	Percentage change 2/					
	2005	2006	2007	2008	2008	2010
January	2,2	2,3	4,1	1,3	-9,8	8,8
February	-0,5	2,5	3,4	2,6	-11,2	9,0
March	1,5	3,1	4,4	-2,0	-6,0	8,2
April	3,6	-0,1	3,0	1,1	-5,8	6,1
May	0,5	5,1	3,5	-2,1	-4,7	3,8
June	-3,2	5,6	4,8	-3,3	-3,7	5,1
July	-3,7	5,0	5,2	-1,3	-2,0	0,2
August	-1,2	5,9	4,6	-3,3	-1,4	
September	-0,4	2,7	3,6	-0,7	-0,4	
October	0,4	4,6	1,8	0,3	-3,5	
November	0,9	3,9	3,5	-5,1	1,2	
December	2,3	2,7	3,7	-10,5	7,2	
Year	0,1	3,7	3,8	-2,0	-3,4	

2/ The annual percentage change is the change in the index of the physical volume of electricity production of the relevant month of the current year compared with the corresponding month of the previous year expressed as a percentage.

**Table 6 – Seasonally adjusted indices of the physical volume of electricity production: 2005 – 2010**

Month	Base : 2005=100						% change between current and previous month
	2005	2006	2007	2008	2009	2010	
January	100,1	102,2	106,4	107,9	97,5	106,1	1,3
February	100,4	102,7	106,4	109,4	97,2	106,1	-0,0
March	100,1	103,0	107,5	105,3	99,1	107,1	0,9
April	103,0	103,0	106,2	107,4	101,2	107,2	0,1
May	99,0	104,1	108,0	105,9	101,2	105,2	-1,9
June	97,9	103,5	108,7	104,9	101,1	106,2	1,0
July	97,8	102,7	107,8	106,0	103,7	103,7	-2,4
August	98,2	103,9	108,4	104,6	103,2		
September	100,1	102,8	106,4	105,8	105,4		
October	100,1	104,9	106,9	107,3	103,7		
November	100,9	104,7	108,2	102,7	103,8		
December	102,3	105,1	108,9	97,6	104,7		

**Table 7 – Total volume of electricity imported: 2005 – 2010**

Month	Gigawatt-hours					
	2005	2006	2007	2008	2009	2010
January	729	872	1 088	638	1 102	1 122
February	714	646	942	885	999	995
March	533	581	973	802	1 064	1 040
April	598	587	1 055	844	906	931
May	849	879	900	761	937	1 074
June	813	881	880	1 002	1 088	1 019
July	856	926	984	1 089	1 040	1/ 1 117
August	883	930	1 045	1 076	1 072	
September	686	971	1 026	1 044	920	
October	836	682	1 040	645	1 115	
November	865	862	796	711	940	
December	837	965	619	1 075	1 112	
<b>Year</b>	<b>9 199</b>	<b>9 782</b>	<b>11 348</b>	<b>10 572</b>	<b>12 295</b>	

1/ Preliminary.

**Table 8 – Total volume of electricity exported: 2005 – 2010**

Month	Gigawatt-hours					
	2005	2006	2007	2008	2009	2010
January	1 030	1 056	1 134	1 280	1 096	1 217
February	901	1 050	1 060	1 101	979	1 128
March	968	1 129	1 231	1 136	1 100	1 252
April	991	1 017	1 132	998	1 086	1 164
May	1 083	1 046	1 203	1 120	1 109	1 172
June	1 096	1 102	1 256	1 162	1 175	1 175
July	1 102	1 239	1 301	1 249	1 223	1/ 1 197
August	1 144	1 262	1 252	1 220	1 235	
September	1 134	1 239	1 186	1 203	1 285	
October	1 161	1 311	1 252	1 258	1 288	
November	1 119	1 186	1 256	1 252	1 213	
December	1 155	1 129	1 233	1 189	1 263	
<b>Year</b>	<b>12 884</b>	<b>13 766</b>	<b>14 496</b>	<b>14 168</b>	<b>14 052</b>	

1/ Preliminary.



**Table 9a – Electricity produced and consumed in power stations, purchased and sold outside South Africa and available for distribution in South Africa (monthly figures)**

		Gigawatt-hours				
		July 2009	June 2010	July 2010	% change between July 2009 and July 2010	Difference between July 2009 and July 2010
<b>Total - All producers</b>	Electricity produced	23 022	22 463	23 056	0,2	34
	Purchased outside South Africa (import)	1 040	1 019	1 117	7,4	77
	Consumed in power stations and auxiliary systems	1 688	1 549	1 660	-1,7	-28
	Sold outside South Africa (export)	1 223	1 175	1 197	-2,1	-26
	Electricity available for distribution in South Africa	<b>21 151</b>	<b>20 758</b>	<b>21 316</b>	<b>0,8</b>	<b>165</b>
<b>ESKOM</b>	Electricity produced	22 212	21 791	22 352	0,6	140
	Purchased outside South Africa (import)	1 040	1 019	1 117	7,4	77
	Consumed in power stations and auxiliary systems	1 615	1 484	1 609	-0,4	-6
	Sold outside South Africa (export)	1 223	1 175	1 197	-2,1	-26
	Electricity available for distribution in South Africa	<b>20 414</b>	<b>20 151</b>	<b>20 663</b>	<b>1,2</b>	<b>249</b>

1/ Preliminary.

**Table 9b – Electricity produced and consumed in power stations, purchased and sold outside South Africa and available for distribution in South Africa (cumulative figures)**

		Gigawatt-hours			
		January to July 2009	January to July 2010	% change between January to July 2009 and January to July 2010	Difference between January to July 2009 and January to July 2010
<b>Total - All producers</b>	Electricity produced	143 076	151 207	5,7	8 131
	Purchased outside South Africa (import)	7 136	7 298	2,3	162
	Consumed in power stations and auxiliary systems	10 625	10 811	1,8	186
	Sold outside South Africa (export)	7 768	8 305	6,9	537
	Electricity available for distribution in South Africa	<b>131 822</b>	<b>139 388</b>	<b>5,7</b>	<b>7 566</b>
<b>ESKOM</b>	Electricity produced	137 985	146 971	6,5	8 986
	Purchased outside South Africa (import)	7 136	7 298	2,3	162
	Consumed in power stations and auxiliary systems	10 114	10 385	2,7	271
	Sold outside South Africa (export)	7 768	8 305	6,9	537
	Electricity available for distribution in South Africa	<b>127 240</b>	<b>135 579</b>	<b>6,6</b>	<b>8 339</b>

1/ Preliminary.

**Table 10 – Total volume of electricity delivered by Eskom to provinces for 2009 and 2010 1/**

Period	Gigawatt-hours										
	Western Cape	Eastern Cape	Northern Cape	Free State	KwaZulu-Natal	North West	Gauteng	Mpumalanga	Limpopo	Total South Africa	
<b>2009</b>	January	1 886	733	408	748	3 368	1 833	4 502	2 265	849	16 592
	February	1 779	625	367	661	3 196	1 721	4 272	2 154	752	15 527
	March	1 995	691	404	739	3 553	1 936	4 716	2 442	875	17 351
	April	1 812	713	350	673	3 410	1 852	4 499	2 476	860	16 645
	May	1 852	799	361	735	3 583	2 009	5 270	2 736	935	18 280
	June	1 891	744	368	763	3 529	2 033	5 552	2 711	924	18 515
	July	1 942	789	398	825	3 689	2 188	6 059	2 841	975	19 706
	August	1 982	761	370	776	3 620	2 095	5 600	2 810	993	19 007
	September	1 889	769	383	658	3 515	2 055	4 923	2 762	1 045	17 999
	October	1 878	752	398	704	3 629	2 276	5 005	2 885	1 000	18 527
	November	1 837	761	402	739	3 490	2 221	4 916	2 717	942	18 025
	December	1 840	736	420	719	3 499	2 170	4 651	2 725	947	17 707
	Year	22 583	8 873	4 629	8 740	42 081	24 389	59 965	31 524	11 097	213 881
	Year to date	<b>13 157</b>	<b>5 094</b>	<b>2 656</b>	<b>5 144</b>	<b>24 328</b>	<b>13 572</b>	<b>34 870</b>	<b>17 625</b>	<b>6 170</b>	<b>122 616</b>
<b>2010</b>	January	1 932	780	404	751	3 540	2 182	4 806	2 845	991	18 231
	February	1 842	719	383	706	3 281	2 029	4 592	2 658	917	17 127
	March	2 037	809	405	780	3 629	2 273	5 086	2 926	1 032	18 977
	April	1 873	750	362	735	3 432	2 106	4 929	2 813	983	17 982
	May	1 930	825	365	788	3 551	2 259	5 411	3 079	979	19 187
	June	1 946	797	378	814	3 527	2 175	5 784	3 011	991	19 424
	July 2/	2 005	811	400	824	3 684	2 188	5 978	2 948	1 062	19 900
	Year to date	<b>13 565</b>	<b>5 491</b>	<b>2 697</b>	<b>5 398</b>	<b>24 644</b>	<b>15 212</b>	<b>36 586</b>	<b>20 280</b>	<b>6 955</b>	<b>130 828</b>

1/ Wholesale energy as delivered by Eskom to the various provinces.

2/ Preliminary.

## Explanatory Notes

<b>Introduction</b>	<b>1</b>	Statistics South Africa (Stats SA) conducts a monthly sample survey of the electricity industry covering electricity undertakings and establishments (branches). This statistical release contains information regarding the volume of electricity units generated and available for distribution in South Africa, the volume of units purchased and sold outside South Africa and the volume of units distributed by Eskom by province on a monthly basis. Both actual and seasonally adjusted figures are published.
	<b>2</b>	This statistical release reflects indices of the physical volume of electricity production on the basis of 2005=100. In accordance with international practice, the indices have to be rebased every five years to a new base year.
	<b>3</b>	In order to improve timeliness of the publication, some information for the current month may have been estimated due to late submission by respondents. These estimates will be revised in the next statistical release(s) as soon as actual information is available.
<b>Purpose of the survey</b>	<b>4</b>	The results of the monthly electricity generated and available for distribution survey are used to compile estimates of the gross domestic product (GDP) and its components, which are used in monitoring the state of the economy and formulation of economic policy.
<b>Scope of the survey</b>	<b>5</b>	This survey covers electricity undertakings and establishments conducting activities concerned with the generation or transmission and distribution of electricity. It includes electrical power installations, which, as subsidiary divisions of undertakings, produce electricity for regular use by these undertakings.
<b>Classification</b>	<b>6</b>	The 1993 edition of the <i>Standard Industrial Classification of all Economic Activities (SIC)</i> , Fifth Edition, Report No. 09-90-02, was used to classify the statistical units in the survey. The SIC is based on the 1990 <i>International Standard Industrial Classification of all Economic Activities (ISIC)</i> with suitable adaptations for local conditions. Each statistical unit is classified to an industry, which reflects the predominant activity of the electricity undertaking or establishment.
<b>Response rate</b>	<b>7</b>	The response rate for the survey on electricity generated and available for distribution for July 2010 was 99%.
<b>Statistical unit</b>	<b>8</b>	The basic statistical unit for the collection of information is the electricity undertaking or establishment. The electricity undertaking or establishment is the smallest economic unit that functions as a separate entity. Each statistical unit is classified to an industry (see paragraph 5).
<b>Survey methodology and design</b>	<b>9</b>	All statistical units are stratified by type of economic activity according to the <i>Standard Industrial Classification of all Economic Activities (SIC)</i> and measure of size, where measure of size is the volume of electricity generated by the electricity undertaking or establishment. All large undertakings or establishments (size category one cases) are completely enumerated. A sample is drawn from medium and small size undertakings and establishments by systematically selecting undertakings or establishments within each size category. An electricity undertaking or establishment with a total generating capacity of less than 500 kilowatt is excluded from the sample.
	<b>10</b>	The survey is conducted by mail, email and telephone. Information is collected from a sample of 22 electricity undertakings or establishments.
<b>Monthly production indices</b>	<b>11</b>	The calculation of the monthly production indices is based on the volume of electricity units produced.

<b>Benchmarking</b>	<b>12</b>	The index of physical volume of electricity production should provide an accurate reflection of the trend of activities of the relevant industry. The level of activities, as measured by the monthly electricity generated and available for distribution survey, is based on information received from a sample of electricity undertakings and establishments. These levels are weighted according to the original sample and designed to represent the population of electricity undertakings and establishments. It is necessary to adjust the level of activities as measured by the monthly sample survey to the level of activities as measured periodically by the Census of electricity, gas and steam. This procedure, whereby the latest results of an economic census are used to compile more accurate level estimates for a certain year, is known as benchmarking.
	<b>13</b>	The results of the 1995 Census of electricity, gas and steam served as a benchmark to verify or adjust the level of the monthly physical volume of electricity production indices collected through the monthly sample survey. The level adjustments were done on the volume indices for August of the relevant census year (the 1995 census year covered the period 1 January 1995 to 31 December 1995 and therefore, the benchmarking was done using the index of August 1995 as reference point).
<b>Seasonal adjustment</b>	<b>14</b>	Seasonally adjusted estimates of all items are generated each month, using the X-11 Seasonal Adjustment Program developed by US Bureau of the Census Economic Research and Analyses Division, 1968. Seasonal adjustment is a means of removing the estimated effects of normal seasonal variation from the series so that the effects of other influences on the series can be more clearly recognized. Seasonal adjustment does not aim to remove irregular or non-seasonal influences, which may be present in any particular month. Influences that are volatile or unsystematic can still make it difficult to interpret the movement of the series even after adjustment for seasonal variations. This means the month-to-month movements of seasonally adjusted estimates may not be reliable indicators of trend behaviour.
<b>Trend cycle</b>	<b>15</b>	The trend is the long-term pattern or movement of a time series. The X-11 Seasonal Adjustment Program is used for smoothing seasonally adjusted estimates.
<b>Related publications</b>	<b>16</b>	Users may also wish to refer to the following publications which are available from Stats SA - <ul style="list-style-type: none"> <li>• <i>Bulletin of Statistics.</i></li> <li>• <i>SA Statistics.</i></li> </ul>
<b>Unpublished statistics</b>	<b>17</b>	In some cases Stats SA can also make available statistics, which are not published. The statistics can be made available as computer printouts or on CD. Generally a charge is made for providing unpublished statistics.
<b>Rounding-off of figures</b>	<b>18</b>	Where necessary, the figures in the tables have been rounded off to the nearest digit shown. There may therefore be slight discrepancies between the sums of the constituent items and the totals shown.
<b>Pre-release policy</b>	<b>19</b>	Stats SA pre-release policy may be inspected at its website, <a href="http://www.statssa.gov.za">www.statssa.gov.za</a> .

## Glossary

<b>Consumption of electricity</b>	For purposes of this release the term 'consumption of electricity' is used interchangeably with the term 'electricity available for distribution'.										
<b>Electricity undertaking</b>	An electricity undertaking is an undertaking concerned with the generation or transmission and distribution of electricity, including electrical power installations, which as subsidiary divisions of undertakings produce electricity for regular use by these undertakings.										
<b>Index of physical volume of electricity production</b>	A statistical measure of the change in the volume of production of electricity in a given period and the volume of production of electricity in the base period. The base period is 2005. The production in the base period is set at 100.										
<b>Industry</b>	An industry consists of a group of undertakings or establishments engaged in the same or similar kinds of economic activity. Industries are defined in the 1993 <i>System of National Accounts (1993 SNA)</i> in the same way as in the <i>Standard Industrial Classification of all Economic Activities (SIC)</i> , Fifth Edition, Report No. 09-90-02.										
<b>Unit of electricity</b>	One gigawatt-hour of electricity is equal to one million kilowatt-hours. A kilowatt-hour is the basic unit of electrical energy equal to one kilowatt of power supplied to or taken from an electric circuit steadily for one hour. One kilowatt-hour equals one thousand watt-hours.										
<b>Symbols and abbreviations</b>	<table border="0"> <tr> <td>GDP</td> <td>Gross domestic product</td> </tr> <tr> <td>ISIC</td> <td>International Standard Industrial Classification</td> </tr> <tr> <td>SIC</td> <td>Standard Industrial Classification of all Economic Activities</td> </tr> <tr> <td>Stats SA</td> <td>Statistics South Africa</td> </tr> <tr> <td>*</td> <td>Revised figures</td> </tr> </table>	GDP	Gross domestic product	ISIC	International Standard Industrial Classification	SIC	Standard Industrial Classification of all Economic Activities	Stats SA	Statistics South Africa	*	Revised figures
GDP	Gross domestic product										
ISIC	International Standard Industrial Classification										
SIC	Standard Industrial Classification of all Economic Activities										
Stats SA	Statistics South Africa										
*	Revised figures										

## General information

Stats SA publishes approximately 300 different statistical releases each year. It is not economically viable to produce them in more than one of South Africa's eleven official languages. Since the releases are used extensively, not only locally but also by international economic and social-scientific communities, Stats SA releases are published in English only.

Stats SA has copyright on this publication. Users may apply the information as they wish, provided that they acknowledge Stats SA as the source of the basic data wherever they process, apply, utilise, publish or distribute the data: and also that they specify that the relevant application and analysis (where applicable) result from their own processing of the data.

### Advanced release calendar

An advanced release calendar is disseminated on [www.statssa.gov.za](http://www.statssa.gov.za)

### Stats SA products

A complete set of Stats SA publications is available at the Stats SA Library and the following libraries:

National Library of South Africa, Pretoria Division  
National Library of South Africa, Cape Town Division  
Natal Society Library, Pietermaritzburg  
Library of Parliament, Cape Town  
Bloemfontein Public Library  
Johannesburg Public Library  
Eastern Cape Library Services, King William's Town  
Central Regional Library, Polokwane  
Central Reference Library, Nelspruit  
Central Reference Collection, Kimberley  
Central Reference Library, Mmabatho

Stats SA also provides a subscription service.

### Electronic services

A large range of data is available via on-line services, diskette, CD and computer printouts.

You can visit us on the Internet at: [www.statssa.gov.za](http://www.statssa.gov.za)

### General enquiries

Telephone number: (012) 310 8443 / 336 0142 (technical enquiries)  
(012) 310 8358 (orders)  
(012) 310 4883/ 4885/ 8018 (library)

Fax number: (012) 310 8664 (technical enquiries)

Email: [thembisilem@statssa.gov.za](mailto:thembisilem@statssa.gov.za) (technical enquiries)  
[nicolaic@statssa.gov.za](mailto:nicolaic@statssa.gov.za) (technical enquiries)  
[info@statssa.gov.za](mailto:info@statssa.gov.za) (user information services)  
[magdaj@statssa.gov.za](mailto:magdaj@statssa.gov.za) (orders)

Postal address: Private Bag X44, Pretoria, 0001

*Produced by Stats SA*