

Statistical release

P4141

Electricity generated and available for distribution (preliminary)

July 2009

Embargoed until:
3 September 2009
13:00

Enquiries:

User information services
Tel: (012) 310 8600/ 8390/ 8351

Forthcoming issue:

August 2009

Expected release date:

1 October 2009

Contents

Page

SUMMARY OF FINDINGS: ELECTRICITY GENERATED AND AVAILABLE FOR DISTRIBUTION (JULY 2009)2

Key figures2

Table A – Selected key figures regarding electricity generated and available for distribution for July 2009.....2

Key findings2

Seasonally adjusted consumption of electricity increases2

Seasonally adjusted production of electricity increases.....2

Distribution of electricity by Eskom to the provinces lower than a year ago.....2

International trade in electricity.....2

Table B – Comparison of the seasonally adjusted quantity of electricity generated and available for distribution between the current quarter and the previous quarter3

Table C – Comparison of actual estimates between the current quarter and the corresponding quarter of the previous year3

Figure 1 – Electricity produced and available for distribution in South Africa from 2006 to 2009.....3

Table 1 – Total volume of electricity available for distribution in South Africa: 2004 to 20094

Table 2 – Annual percentage change in electricity available for distribution in South Africa: 2004 to 20094

Table 3 – Seasonally adjusted total volume of electricity available for distribution in South Africa: 2004 to 20095

Table 4 – Indices of the physical volume of electricity production: 2004 to 2009.....6

Table 5 – Annual percentage change in indices of the physical volume of electricity production: 2004 to 2009.....6

Table 6 – Seasonally adjusted indices of the physical volume of electricity production: 2004 to 20097

Table 7 – Total volume of electricity imported: 2004 to 2009.....8

Table 8 – Total volume of electricity exported: 2004 to 2009.....8

Table 9a – Electricity produced and consumed in power stations, purchased and sold outside South Africa and available for distribution in South Africa (monthly figures)9

Table 9b – Electricity produced and consumed in power stations, purchased and sold outside South Africa and available for distribution in South Africa (cumulative figures).....9

Table 10 – Electricity distributed by Eskom to provinces for 2008 and 2009 10

Explanatory Notes.....11

Glossary.....13

General information14

SUMMARY OF FINDINGS: ELECTRICITY GENERATED AND AVAILABLE FOR DISTRIBUTION (JULY 2009)

Key figures

Table A – Selected key figures regarding electricity generated and available for distribution for July 2009

Actual estimates	July 2009 1/	% change between July 2008 and July 2009	% change between May to July 2008 and May to July 2009	% change between January to July 2008 and January to July 2009
Electricity available for distribution (Gigawatt-hours)	21 152	-2,1	-3,2	-5,3
Index of the physical volume of electricity production (2005=100)	112,8	-2,0	-3,4	-6,0

1/ Preliminary.

Seasonally adjusted estimates	July 2009	% change between June and July 2009	% change between February to April 2009 and May to July 2009
Electricity available for distribution (Gigawatt-hours)	19 484	2,1	2,9
Index of the physical volume of electricity production (2005=100)	103,9	2,5	3,1

Key findings

Seasonally adjusted consumption of electricity increases

Electricity consumption after seasonal adjustment for July 2009 increased by 2,1% compared with June 2009 and by 2,9% for the three months ended July 2009 compared with the previous three months ended April 2009 (see Tables A, B and 3). However, the actual estimated consumption of electricity was 2,1% lower (-458 Gigawatt-hours) in July 2009 compared with July 2008 (see Tables A, 2 and 9a) and 5,3% lower (-7 322 Gigawatt-hours) in the first seven months of 2009 compared with the first seven months of 2008 (see Tables A and 9b).

Seasonally adjusted production of electricity increases

The estimated seasonally adjusted production of electricity for the three months ended July 2009 increased by 3,1% compared with the previous three months. The actual production of electricity in July 2009 (23 023 Gigawatt-hours) represents a decline of 2,0% compared with the July 2008 figure, the smallest annual decrease for 2009 thus far (see Tables A, 5 and 9a).

Distribution of electricity by Eskom to the provinces lower than a year ago

Electricity distributed to the provinces for the first seven months of 2009 was 4,9% lower (-6 319 Gigawatt-hours) compared with the first seven months of 2008. Lower figures were reported for eight provinces during this period ranging from -11,4% for Mpumalanga to -1,8% for Northern Cape. KwaZulu-Natal was the only province with an increase (1,6%) during this period (see Table 10).

International trade in electricity

The volume of electricity imported from outside South African borders increased from 6 021 Gigawatt-hours in the first seven months of 2008 to 7 136 Gigawatt-hours in the first seven months of 2009, representing an increase of 18,5% (1 115 Gigawatt-hours). The volume of electricity exported to neighbouring countries for the first seven months of 2009 decreased by 3,5% (-278 Gigawatt-hours) compared with the first seven months of 2008 (see Table 9b).

Table B – Comparison of the seasonally adjusted quantity of electricity generated and available for distribution between the current quarter and the previous quarter

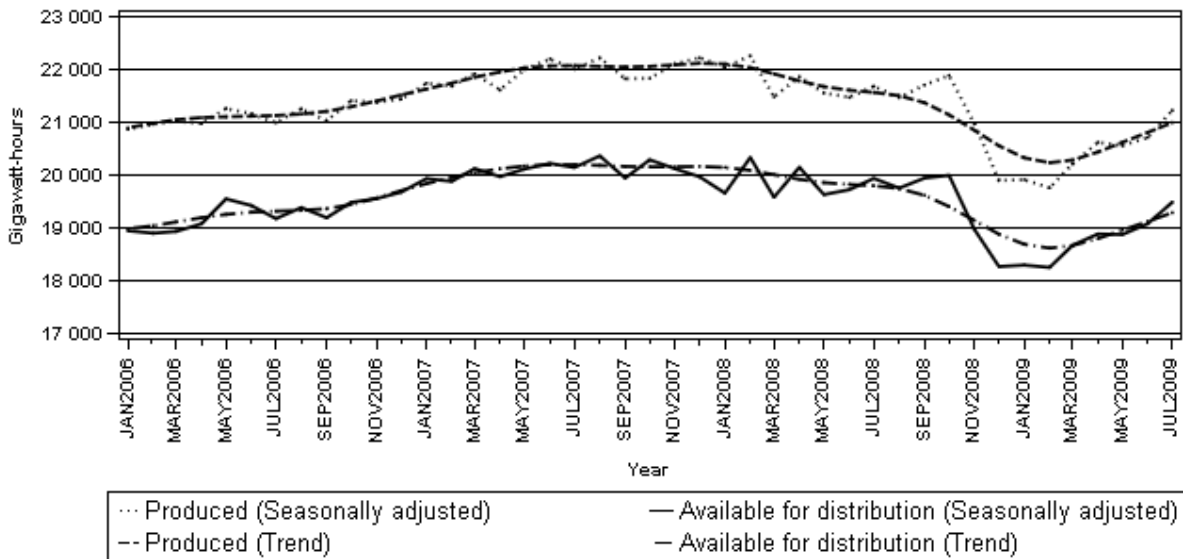
Gigawatt-hours	Seasonally adjusted quantity February to April 2009	Seasonally adjusted quantity May to July 2009	% change between February to April 2009 and May to July 2009	Quantity difference between February to April 2009 and May to July 2009
Electricity produced	60 586	62 497	3,2	1 911
Electricity available for distribution in South Africa	55 795	57 433	2,9	1 638

Table C – Comparison of actual estimates between the current quarter and the corresponding quarter of the previous year

Gigawatt-hours	Actual quantity May to July 2008	Actual quantity May to July 2009	% change between May to July 2008 and May to July 2009	Quantity difference between May to July 2008 and May to July 2009
Electricity produced	68 066	65 729	-3,4	-2 337
Purchased outside South Africa (import)	2 852	3 065	7,5	213
Consumed in power stations and auxiliary systems	4 897	4 769	-2,6	-128
Sold outside South Africa (export)	3 531	3 507	-0,7	-24
Electricity available for distribution in South Africa	62 490	60 517	-3,2	-1 973

Figure 1 below shows the seasonally adjusted and trend patterns for electricity produced and available for distribution in South Africa from January 2006 to July 2009.

Figure 1 – Electricity produced and available for distribution in South Africa from 2006 to 2009



P J Lehohla
Statistician-General

Detailed results: Tables

Table 1 – Total volume of electricity available for distribution in South Africa: 2004 to 2009

Month	Gigawatt-hours					
	2004	2005	2006	2007	2008	2009
January	17 850	18 149	18 603	19 561	19 256	17 919
February	17 277	17 169	17 396	18 301	18 668	16 757
March	18 476	18 487	18 982	20 160	19 603	18 694
April	17 524	18 133	18 122	18 982	19 127	17 935
May	18 909	19 224	20 312	20 901	20 365	19 549
June	19 337	18 983	20 166	21 020	20 515	19 816
July	20 156	19 657	20 632	21 780	21 610	1/ 21 152
August	19 265	19 191	20 307	21 353	20 736	
September	18 362	18 384	18 987	19 732	19 725	
October	18 714	19 127	19 663	20 435	20 138	
November	18 314	18 523	19 244	19 785	18 640	
December	17 754	18 230	18 909	19 160	17 541	
Year	221 938	223 257	231 323	241 170	235 924	

1/ Preliminary.

Table 2 – Annual percentage change in electricity available for distribution in South Africa: 2004 to 2009

Month	Percentage change 1/					
	2004	2005	2006	2007	2008	2009
January	4,4	1,7	2,5	5,1	-1,6	-6,9
February	6,9	-0,6	1,3	5,2	2,0	-10,2
March	4,7	0,1	2,7	6,2	-2,8	-4,6
April	3,7	3,5	-0,1	4,7	0,8	-6,2
May	4,1	1,7	5,7	2,9	-2,6	-4,0
June	5,5	-1,8	6,2	4,2	-2,4	-3,4
July	5,1	-2,5	5,0	5,6	-0,8	-2,1
August	2,9	-0,4	5,8	5,2	-2,9	
September	4,8	0,1	3,3	3,9	0,0	
October	1,3	2,2	2,8	3,9	-1,5	
November	2,9	1,1	3,9	2,8	-5,8	
December	1,7	2,7	3,7	1,3	-8,4	
Year	4,0	0,6	3,6	4,3	-2,2	

1/ The percentage change is the change in the volume of electricity available for distribution of the relevant year compared with the volume of electricity available for distribution of the previous year expressed as a percentage.

Table 3 – Seasonally adjusted total volume of electricity available for distribution in South Africa: 2004 to 2009

Month	Gigawatt-hours						% change between current and previous month
	2004	2005	2006	2007	2008	2009	
January	18 200	18 489	18 943	19 931	19 657	18 291	0,1
February	18 750	18 642	18 896	19 880	20 332	18 247	-0,2
March	18 391	18 440	18 930	20 122	19 580	18 667	2,3
April	18 361	19 056	19 075	19 969	20 147	18 881	1,1
May	18 156	18 478	19 547	20 114	19 629	18 872	0,0
June	18 570	18 254	19 421	20 220	19 721	19 077	1,1
July	18 733	18 278	19 172	20 143	19 936	19 484	2,1
August	18 464	18 358	19 383	20 363	19 751		
September	18 596	18 608	19 190	19 943	19 942		
October	18 477	18 923	19 481	20 288	19 995		
November	18 618	18 819	19 552	20 119	18 969		
December	18 546	18 995	19 675	19 967	18 264		

Table 4 – Indices of the physical volume of electricity production: 2004 to 2009

Month	Base: 2005=100					
	2004	2005	2006	2007	2008	2009
January	95,5	97,6	99,8	103,9	105,3	95,0
February	92,2	91,7	94,0	97,2	99,7	88,5
March	98,7	100,2	103,3	107,8	105,6	99,3
April	94,7	98,1	98,0	100,9	102,0	96,1
May	102,4	102,9	108,1	112,0	109,6	104,5
June	105,0	101,6	107,3	112,5	108,8	104,8
July	109,5	105,5	110,8	116,6	115,1	1/ 112,8
August	104,3	103,0	109,1	114,1	110,3	
September	99,5	99,1	101,8	105,5	104,8	
October	102,1	102,5	107,2	109,1	109,4	
November	98,5	99,4	103,3	106,9	101,4	
December	96,0	98,2	100,9	104,6	93,6	
Year	99,9	100,0	103,6	107,6	105,5	

1/ Preliminary.

Table 5 – Annual percentage change in indices of the physical volume of electricity production: 2004 to 2009

Month	Percentage change					
	2004	2005	2006	2007	2008	2009
January	6,6	2,2	2,3	4,1	1,3	-9,8
February	8,9	-0,5	2,5	3,4	2,6	-11,2
March	6,2	1,5	3,1	4,4	-2,0	-6,0
April	5,1	3,6	-0,1	3,0	1,1	-5,8
May	5,3	0,5	5,1	3,6	-2,1	-4,7
June	6,6	-3,2	5,6	4,8	-3,3	-3,7
July	6,8	-3,7	5,0	5,2	-1,3	-2,0
August	1,9	-1,2	5,9	4,6	-3,3	
September	2,6	-0,4	2,7	3,6	-0,7	
October	-0,1	0,4	4,6	1,8	0,3	
November	2,2	0,9	3,9	3,5	-5,1	
December	2,1	2,3	2,7	3,7	-10,5	
Year	4,4	0,1	3,7	3,8	-2,0	

1/ The percentage change is the change in the index of the physical volume of electricity production of the relevant year compared with the index of the physical volume of electricity production of the previous year expressed as a percentage.

Table 6 – Seasonally adjusted indices of the physical volume of electricity production: 2004 to 2009

Month	Base: 2005=100						% change between current and previous month
	2004	2005	2006	2007	2008	2009	
January	98,0	100,1	102,2	106,5	107,9	97,5	0,1
February	101,1	100,3	102,7	106,2	109,0	96,7	-0,8
March	98,7	100,1	102,9	107,3	105,2	99,0	2,4
April	99,1	102,9	102,7	105,8	107,1	101,0	2,0
May	98,5	99,0	104,1	107,8	105,6	100,7	-0,3
June	100,9	97,9	103,6	108,7	105,1	101,4	0,7
July	101,4	97,8	102,8	107,8	106,2	103,9	2,5
August	99,6	98,3	104,1	108,8	105,1		
September	100,4	100,2	103,0	106,9	106,3		
October	99,5	100,1	104,8	106,9	107,2		
November	100,1	100,9	104,7	108,3	102,7		
December	100,4	102,4	105,0	108,8	97,4		

Table 7 – Total volume of electricity imported: 2004 to 2009

Month	Gigawatt-hours					
	2004	2005	2006	2007	2008	2009
January	828	729	872	1 088	638	1 102
February	811	714	646	942	885	999
March	863	533	581	973	802	1 064
April	641	598	587	1 055	844	906
May	547	849	879	900	761	937
June	560	813	881	880	1 002	1 088
July	607	856	926	984	1 089	1/ 1 040
August	618	883	930	1 045	1 076	
September	590	686	971	1 026	1 044	
October	536	836	682	1 040	645	
November	746	865	862	796	711	
December	679	837	965	619	1 075	
Year	8 026	9 199	9 782	11 348	10 572	

1/ Preliminary.

Table 8 – Total volume of electricity exported: 2004 to 2009

Month	Gigawatt-hours					
	2004	2005	2006	2007	2008	2009
January	1 037	1 030	1 056	1 134	1 280	1 096
February	977	901	1 050	1 060	1 101	979
March	1 027	968	1 129	1 231	1 136	1 100
April	951	991	1 017	1 132	998	1 086
May	944	1 083	1 046	1 203	1 120	1 109
June	1 057	1 096	1 102	1 256	1 162	1 175
July	1 140	1 102	1 239	1 301	1 249	1/ 1 223
August	1 049	1 144	1 262	1 252	1 220	
September	1 048	1 134	1 239	1 186	1 203	
October	1 112	1 161	1 311	1 252	1 258	
November	1 082	1 119	1 186	1 256	1 252	
December	1 029	1 155	1 129	1 233	1 189	
Year	12 453	12 884	13 766	14 496	14 168	

1/ Preliminary.

Table 9a – Electricity produced and consumed in power stations, purchased and sold outside South Africa and available for distribution in South Africa (monthly figures)

		Gigawatt-hours				
		July 2008	June 2009	July 2009 1/	% change between July 2008 and July 2009	Difference between July 2008 and July 2009
Total - All producers	Electricity produced	23 498	21 384	23 023	-2,0	-475
	Purchased outside South Africa (import)	1 089	1 088	1 040	-4,5	-49
	Consumed in power stations and auxiliary systems	1 728	1 481	1 687	-2,4	-41
	Sold outside South Africa (export)	1 249	1 175	1 223	-2,1	-26
	Electricity available for distribution in South Africa	21 610	19 816	21 152	-2,1	-458
ESKOM	Electricity produced	22 515	20 723	22 212	-1,3	-303
	Purchased outside South Africa (import)	1 089	1 088	1 040	-4,5	-49
	Consumed in power stations and auxiliary systems	1 626	1 408	1 615	-0,7	-11
	Sold outside South Africa (export)	1 249	1 175	1 223	-2,1	-26
	Electricity available for distribution in South Africa	20 730	19 227	20 414	-1,5	-316

1/ Preliminary.

Table 9b – Electricity produced and consumed in power stations, purchased and sold outside South Africa and available for distribution in South Africa (cumulative figures)

		Gigawatt-hours			
		January to July 2008	January to July 2009 1/	% change between January to July 2008 and January to July 2009	Difference between January to July 2008 and January to July 2009
Total - All producers	Electricity produced	152 266	143 077	-6,0	-9 189
	Purchased outside South Africa (import)	6 021	7 136	18,5	1 115
	Consumed in power stations and auxiliary systems	11 095	10 624	-4,2	-471
	Sold outside South Africa (export)	8 046	7 768	-3,5	-278
	Electricity available for distribution in South Africa	139 144	131 822	-5,3	-7 322
ESKOM	Electricity produced	145 878	137 985	-5,4	-7 893
	Purchased outside South Africa (import)	6 021	7 136	18,5	1 115
	Consumed in power stations and auxiliary systems	10 456	10 114	-3,3	-342
	Sold outside South Africa (export)	8 046	7 768	-3,5	-278
	Electricity available for distribution in South Africa	133 395	127 240	-4,6	-6 155

1/ Preliminary.

Table 10 – Electricity distributed by Eskom to provinces for 2008 and 2009 1/

Period		Gigawatt-hours									
		Western Cape	Eastern Cape	Northern Cape	Free State	KwaZulu-Natal	North West	Gauteng	Mpumalanga	Limpopo	Total South Africa
2008	January	1 928	749	396	749	3 552	2 207	4 861	2 661	874	17 977
	February	1 839	758	396	700	3 390	2 102	4 640	2 600	898	17 323
	March	1 937	779	393	749	3 363	2 217	4 945	2 801	934	18 118
	April	1 893	753	363	717	3 322	2 089	4 784	2 796	934	17 651
	May	1 985	760	373	796	3 417	2 141	5 414	2 990	1 015	18 891
	June	1 987	834	374	800	3 333	2 142	5 523	2 966	992	18 951
	July	2 065	864	410	839	3 571	2 234	5 919	3 078	1 044	20 024
	August	1 999	845	406	757	3 575	2 180	5 438	2 937	1 039	19 176
	September	1 975	829	419	785	3 460	2 093	5 009	2 806	1 005	18 381
	October	1 952	838	442	803	3 575	2 192	4 983	2 985	1 010	18 780
	November	1 813	750	405	754	3 425	2 052	4 665	2 594	828	17 286
	December	1 872	673	391	737	3 258	1 845	4 292	2 399	848	16 315
	Year	23 245	9 432	4 768	9 186	41 241	25 494	60 473	33 613	11 421	218 873
	Year to date 2008	13 634	5 497	2 705	5 350	23 948	15 132	36 086	19 892	6 691	128 935
2009	January	1 886	733	408	748	3 368	1 833	4 502	2 265	849	16 592
	February	1 779	625	367	661	3 196	1 721	4 272	2 154	752	15 527
	March	1 995	691	404	739	3 553	1 936	4 716	2 442	875	17 351
	April	1 812	713	350	673	3 410	1 852	4 499	2 476	860	16 645
	May	1 852	799	361	735	3 583	2 009	5 270	2 736	935	18 280
	June	1 891	744	368	763	3 529	2 033	5 552	2 711	924	18 515
	July 2/	1 942	789	398	825	3 689	2 188	6 059	2 841	975	19 706
	Year to date 2009	13 157	5 094	2 656	5 144	24 328	13 572	34 870	17 625	6 170	122 616

1/ Wholesale energy as delivered by Eskom to the various provinces.

2/ Preliminary.

Explanatory Notes

Introduction	1	Statistics South Africa (Stats SA) conducts a monthly sample survey of the electricity industry covering electricity undertakings and establishments (branches). This statistical release contains information regarding the number of electricity units generated and available for distribution in South Africa, the number of units purchased and sold outside South Africa and the number of units distributed by Eskom by province on a monthly basis. Both actual and seasonally adjusted figures are published.
	2	This statistical release reflects indices of the physical volume of electricity production on the basis of 2005=100. In accordance with international practice, the indices have to be rebased every five years to a new base year.
	3	In order to improve timeliness of the publication, some information for the current month may have been estimated due to late submission by respondents. These estimates will be revised in the next statistical release(s) as soon as actual information is available.
Purpose of the survey	4	The results of the monthly electricity generated and available for distribution survey are used to compile estimates of the Gross Domestic Product (GDP) and its components, which are used in monitoring the state of the economy and formulation of economic policy.
Scope of the survey	5	This survey covers electricity undertakings and establishments conducting activities concerned with the generation or transmission and distribution of electricity, including electrical power installations, which, as subsidiary divisions of undertakings, produce electricity for regular use by these undertakings.
Classification	6	The 1993 edition of the <i>Standard Industrial Classification of all Economic Activities (SIC)</i> , Fifth Edition, Report No. 09-90-02, was used to classify the statistical units in the survey. The SIC is based on the 1990 <i>International Standard Industrial Classification of all Economic Activities (ISIC)</i> with suitable adaptations for local conditions. Each statistical unit is classified to an industry, which reflects the predominant activity of the electricity undertaking or establishment.
Response rate	7	The response rate for the survey on electricity generated and available for distribution for July 2009 was 99%.
Statistical unit	8	The basic statistical unit for the collection of information is the electricity undertaking or establishment. The electricity undertaking or establishment is the smallest economic unit that functions as a separate entity. Each statistical unit is classified to an industry (see paragraph 5).
Survey methodology and design	9	All statistical units are stratified by type of economic activity according to the <i>Standard Industrial Classification of all Economic Activities (SIC)</i> and measure of size, where measure of size is the volume of electricity generated by the electricity undertaking or establishment. All large undertakings or establishments (size category one cases) are completely enumerated. A sample is drawn from medium and small size undertakings and establishments by systematically selecting undertakings or establishments within each size category. An electricity undertaking or establishment with a total generating capacity of less than 500 kilowatt is excluded from the sample.
	10	The survey is conducted by mail each month collecting information from a sample of 22 electricity undertakings or establishments.
Monthly production indices	11	The calculation of the monthly production indices is based on the number of electricity units produced.

Benchmarking	12	The index of physical volume of electricity production should provide an accurate reflection of the trend of activities of the relevant industry. The level of activities as measured by the monthly electricity generated and available for distribution survey is based on information received from a sample of electricity undertakings and establishments, which are weighted according to the original sample, designed in order to represent the population of electricity undertakings and establishments. It is necessary to adjust the level of activities as measured by the monthly sample survey to the level of activities as measured periodically by the Census of electricity, gas and steam. This procedure, whereby the latest results of an economic census are used to compile more accurate level estimates for a certain year, is known as benchmarking.
	13	The results of the 1995 Census of electricity, gas and steam served as benchmarks to verify or adjust the level of the monthly physical volume of electricity production indices collected through the monthly sample survey. The level adjustments were done on the volume indices for August of the relevant census year (the 1995 census year covered the period 1 January 1995 to 31 December 1995 and therefore, the benchmarking was done using the index of August 1995 as reference point).
Seasonal adjustment	14	Seasonally adjusted estimates of all items are generated each month, using the X-11 Seasonal Adjustment Program developed by US Bureau of the Census Economic Research and Analyses Division, 1968. Seasonal adjustment is a means of removing the estimated effects of normal seasonal variation from the series so that the effects of other influences on the series can be more clearly recognized. Seasonal adjustment does not aim to remove irregular or non-seasonal influences, which may be present in any particular month. Influences that are volatile or unsystematic can still make it difficult to interpret the movement of the series even after adjustment for seasonal variations. This means the month-to-month movements of seasonally adjusted estimates may not be reliable indicators of trend behaviour.
Trend cycle	15	The trend is the long-term pattern or movement of a time series. The X-11 Seasonal Adjustment Program is used for smoothing seasonally adjusted estimates.
Related publications	16	Users may also wish to refer to the following publications which are available from Stats SA - <ul style="list-style-type: none"> • <i>Bulletin of Statistics.</i> • <i>SA Statistics.</i>
Unpublished statistics	17	In some cases Stats SA can also make available statistics, which are not published. The statistics can be made available as computer printouts or on CD. Generally a charge is made for providing unpublished statistics.
Rounding-off figures	18	The figures in the tables have, where necessary, been rounded off to the nearest digit shown. There may, therefore, be slight discrepancies between the sums of the constituent items and the totals shown.
Pre-release policy	19	Stats SA pre-release policy may be inspected at its website, www.statssa.gov.za .

Glossary

Consumption of electricity	For purposes of this release the term 'consumption of electricity' is used interchangeably with the term 'electricity available for distribution'.										
Electricity undertaking	An electricity undertaking is an undertaking concerned with the generation or transmission and distribution of electricity, including electrical power installations, which as subsidiary divisions of undertakings produce electricity for regular use by these undertakings.										
Index of physical volume of electricity production	A statistical measure of the change in the volume of production of electricity in a given period and the volume of production of electricity in the base period. The base period is 2005. The production in the base period is set at 100.										
Industry	An industry consists of a group of undertakings or establishments engaged in the same or similar kinds of economic activity. Industries are defined in the 1993 <i>System of National Accounts (1993 SNA)</i> in the same way as in the <i>Standard Industrial Classification of all Economic Activities (SIC)</i> , Fifth Edition, Report No. 09-90-02.										
Unit of electricity	One gigawatt-hour of electricity is equal to one million kilowatt-hours. A kilowatt-hour is the basic unit of electrical energy equal to one kilowatt of power supplied to or taken from an electric circuit steadily for one hour. One kilowatt-hour equals one thousand watt-hours.										
Symbols and abbreviations	<table border="0"> <tr> <td>GDP</td> <td>Gross Domestic Product</td> </tr> <tr> <td>ISIC</td> <td>International Standard Industrial Classification</td> </tr> <tr> <td>SIC</td> <td>Standard Industrial Classification of all Economic Activities</td> </tr> <tr> <td>Stats SA</td> <td>Statistics South Africa</td> </tr> <tr> <td>*</td> <td>Revised figures</td> </tr> </table>	GDP	Gross Domestic Product	ISIC	International Standard Industrial Classification	SIC	Standard Industrial Classification of all Economic Activities	Stats SA	Statistics South Africa	*	Revised figures
GDP	Gross Domestic Product										
ISIC	International Standard Industrial Classification										
SIC	Standard Industrial Classification of all Economic Activities										
Stats SA	Statistics South Africa										
*	Revised figures										

General information

Stats SA publishes approximately 300 different statistical releases each year. It is not economically viable to produce them in more than one of South Africa's eleven official languages. Since the releases are used extensively, not only locally but also by international economic and social-scientific communities, Stats SA releases are published in English only.

Stats SA has copyright on this publication. Users may apply the information as they wish, provided that they acknowledge Stats SA as the source of the basic data wherever they process, apply, utilise, publish or distribute the data: and also that they specify that the relevant application and analysis (where applicable) result from their own processing of the data.

Advanced release calendar

An advanced release calendar is disseminated on www.statssa.gov.za

Stats SA products

A complete set of Stats SA publications is available at the Stats SA Library and the following libraries:

National Library of South Africa, Pretoria Division
National Library of South Africa, Cape Town Division
Natal Society Library, Pietermaritzburg
Library of Parliament, Cape Town
Bloemfontein Public Library
Johannesburg Public Library
Eastern Cape Library Services, King William's Town
Central Regional Library, Polokwane
Central Reference Library, Nelspruit
Central Reference Collection, Kimberley
Central Reference Library, Mmabatho

Stats SA also provides a subscription service.

Electronic services

A large range of data is available via on-line services, diskette, CD and computer printouts.

You can visit us on the Internet at: www.statssa.gov.za

General enquiries

Telephone number: (012) 336 0142/ 310 8443 (technical enquiries)
(012) 310 8161 (orders)
(012) 310 4883/ 4885/ 8018 (library)

Fax number: (012) 310 8664 (technical enquiries)

email: gerdab@statssa.gov.za (technical enquiries)
nicolaic@statssa.gov.za (technical enquiries)
thembisilem@statssa.gov.za (technical enquiries)
info@statssa.gov.za (user information services)
distribution@statssa.gov.za (orders)

Postal address: Private Bag X44, Pretoria, 0001

Produced by Stats SA