

Statistical release

P4141

Electricity generated and available for distribution (Preliminary)

February 2012

**Embargoed until:
5 April 2012
08:00**

Enquiries:

User Information Services
Tel: (012) 310 8600 / 4892 /8390

Forthcoming issue:

March 2012

Expected release date:

3 May 2012

Contents

Results for February 2012 **2**

Table A – Selected key figures regarding electricity generated and available for distribution 2

Table B – Comparison of the seasonally adjusted volume of electricity generated and available for distribution between the three months ended February 2012 and the previous three months 3

Table C – Comparison of actual estimates between the three months ended February 2012 and the three months ended February 2011 3

Figure 1 – Electricity produced and available for distribution in South Africa, seasonally adjusted and trend 3

Tables **4**

Table 1 – Total volume of electricity available for distribution in South Africa: 2007–2012 4

Table 2 – Annual percentage change in electricity available for distribution in South Africa: 2007–2012 4

Table 3 – Seasonally adjusted total volume of electricity available for distribution in South Africa: 2007–2012 4

Table 4 – Indices of the physical volume of electricity production: 2007–2012 5

Table 5 – Annual percentage change in indices of the physical volume of electricity production: 2007–2012 5

Table 6 – Seasonally adjusted indices of the physical volume of electricity production: 2007–2012 5

Table 7 – Total volume of electricity imported: 2007–2012 6

Table 8 – Total volume of electricity exported: 2007–2012 6

Table 9a – Electricity produced and consumed in power stations, purchased and sold outside South Africa and available for distribution in South Africa (monthly figures) 7

Table 9b – Electricity produced and consumed in power stations, purchased and sold outside South Africa and available for distribution in South Africa (cumulative figures) 7

Table 10 – Total volume of electricity delivered by Eskom to provinces for 2011 and 2012 8

Explanatory notes **9**

Glossary **11**

Technical enquiries for electricity **11**

General information **12**

Results for February 2012

Table A – Selected key figures regarding electricity generated and available for distribution

Actual estimates	February 2012 1/	% change between February 2011 and February 2012	% change between December 2010 to February 2011 and December 2011 to February 2012	% change between January to February 2011 and January to February 2012
Electricity available for distribution (Gigawatt-hours)	18 779	1,8	1,0	1,0
Index of the physical volume of electricity production (2005=100)	99,4	0,5	0,6	0,8

1/ Preliminary.

Seasonally adjusted estimates	February 2012	% change between January and February 2012	% change between September to November 2011 and December 2011 to February 2012
Electricity available for distribution (Gigawatt-hours)	19 952	-1,1	0,6
Index of the physical volume of electricity production (2005=100)	106,6	-1,0	0,2

Consumption of electricity

Seasonally adjusted electricity consumption increased by 0,6% for the three months ended February 2012 compared with the three months ended November 2011. In February 2012, a month-on-month decrease of 1,1% was recorded, following a month-on-month increase of 0,2% in January 2012.

The actual volume of electricity consumption increased by 1,8% year-on-year in February 2012.

Production of electricity

Seasonally adjusted electricity production increased by 0,2% for the three months ended February 2012 compared with the three months ended November 2011. In February 2012, a month-on-month decrease of 1,0% was recorded, following a month-on-month increase of 0,4% in January 2012.

The actual estimated electricity production increased by 0,5% year-on-year in February 2012.

Electricity delivered by Eskom to the provinces

The total volume of electricity delivered by Eskom to the provinces increased by 1,7% between February 2011 and February 2012. Increases were reported in seven of the nine provinces, with the largest percentage increase recorded for Eastern Cape (11,2%), followed by Northern Cape (8,3%) and Limpopo (5,4%).

Table B – Comparison of the seasonally adjusted volume of electricity generated and available for distribution between the three months ended February 2012 and the previous three months

Gigawatt-hours	Seasonally adjusted quantity September to November 2011	Seasonally adjusted quantity December 2011 to February 2012	% change between September to November 2011 and December 2011 to February 2012	Quantity difference between September to November 2011 and December 2011 to February 2012
Electricity produced	65 526	65 633	0,2	107
Electricity available for distribution in South Africa	59 912	60 273	0,6	361

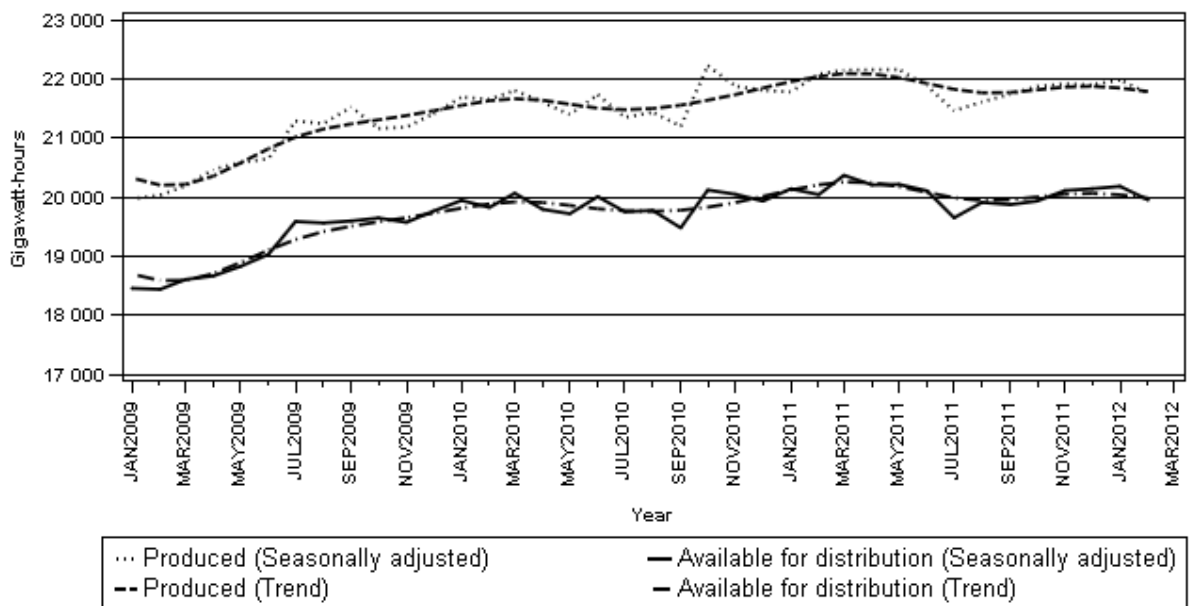
Table C – Comparison of actual estimates between the three months ended February 2012 and the three months ended February 2011

Gigawatt-hours	Actual volume December 2010 to February 2011	Actual volume December 2011 to February 2012	% change between December 2010 to February 2011 and December 2011 to February 2012	Quantity difference between December 2010 to February 2011 and December 2011 to February 2012
Electricity produced	62 255	62 663	0,6	408
Purchased outside South Africa (import) 1/	2 748	3 235	17,7	487
Consumed in power stations and auxiliary systems	4 525	4 508	-0,4	-17
Sold outside South Africa (export) 2/	3 411	3 745	9,8	334
Electricity available for distribution in South Africa	57 067	57 644	1,0	577

1/ Physical energy flowing into South Africa as measured by the metering systems at the South African borders.

2/ Physical energy flowing out of South Africa as measured by the metering systems at the South African borders.

Figure 1 – Electricity produced and available for distribution in South Africa, seasonally adjusted and trend



PJ Lehohla
Statistician-General

Tables

Table 1 – Total volume of electricity available for distribution in South Africa: 2007–2012

Month	Gigawatt-hours					
	2007	2008	2009	2010	2011	2012
January	19 561	19 256	17 919	19 396	19 616	19 676
February	18 301	18 668	16 757	18 181	18 455	1/ 18 779
March	20 160	19 603	18 694	20 186	20 518	
April	18 982	19 127	17 934	19 102	19 539	
May	20 901	20 365	19 548	20 435	20 938	
June	21 020	20 515	19 819	20 800	20 914	
July	21 780	21 610	21 151	21 307	21 162	
August	21 353	20 736	20 398	20 540	20 617	
September	19 732	19 725	19 382	19 256	19 619	
October	20 435	20 138	19 899	20 371	20 198	
November	19 785	18 640	19 248	19 702	19 763	
December	19 160	17 541	18 850	18 996	* 19 189	
Year	241 170	235 924	229 599	238 272	240 528	

1/ Preliminary.
* Revised.

Table 2 – Annual percentage change in electricity available for distribution in South Africa: 2007–2012

Month	Percentage change 2/					
	2007	2008	2009	2010	2011	2012
January	5,1	-1,6	-6,9	8,2	1,1	0,3
February	5,2	2,0	-10,2	8,5	1,5	1,8
March	6,2	-2,8	-4,6	8,0	1,6	
April	4,7	0,8	-6,2	6,5	2,3	
May	2,9	-2,6	-4,0	4,5	2,5	
June	4,2	-2,4	-3,4	4,9	0,5	
July	5,6	-0,8	-2,1	0,7	-0,7	
August	5,2	-2,9	-1,6	0,7	0,4	
September	3,9	-0,0	-1,7	-0,7	1,9	
October	3,9	-1,5	-1,2	2,4	-0,8	
November	2,8	-5,8	3,3	2,4	0,3	
December	1,3	-8,4	7,5	0,8	1,0	
Year	4,3	-2,2	-2,7	3,8	0,9	

2/ The annual percentage change is the change in the volume of electricity available for distribution of the relevant month of the current year compared with the corresponding month of the previous year expressed as a percentage.

Table 3 – Seasonally adjusted total volume of electricity available for distribution in South Africa: 2007–2012

Month	Gigawatt-hours						% change between current and previous month
	2007	2008	2009	2010	2011	2012	
January	20 051	19 780	18 454	19 942	20 139	20 181	0,2
February	19 937	19 987	18 437	19 824	20 041	19 952	-1,1
March	20 119	19 539	18 603	20 063	20 368		
April	19 794	19 902	18 664	19 791	20 205		
May	20 149	19 623	18 826	19 717	20 213		
June	20 261	19 747	19 028	20 006	20 105		
July	20 296	20 066	19 585	19 751	19 648		
August	20 460	19 851	19 561	19 772	19 909		
September	19 951	19 940	19 595	19 478	19 871		
October	20 148	19 879	19 644	20 119	19 931		
November	20 086	18 956	19 571	20 045	20 110		
December	20 005	18 415	19 762	19 930	20 140		

Table 4 – Indices of the physical volume of electricity production: 2007–2012

Month	Base: 2005=100					
	2007	2008	2009	2010	2011	2012
January	103,9	105,3	95,0	103,4	104,0	105,2
February	97,2	99,7	88,5	96,5	98,9	1/ 99,4
March	107,8	105,6	99,3	107,4	109,2	
April	100,9	102,0	96,1	102,0	104,8	
May	111,9	109,6	104,5	108,5	112,2	
June	112,5	108,8	104,8	110,1	110,8	
July	116,6	115,1	112,8	113,0	113,2	
August	114,1	110,3	108,8	109,4	110,0	
September	105,5	104,8	104,4	102,8	105,3	
October	109,1	109,4	105,6	110,8	109,2	
November	106,9	101,4	102,6	105,9	106,1	
December	104,6	93,6	100,3	102,1	* 102,4	
Year	107,6	105,5	101,9	106,0	107,2	

1/ Preliminary.

* Revised.

Table 5 – Annual percentage change in indices of the physical volume of electricity production: 2007–2012

Month	Percentage change 2/					
	2007	2008	2009	2010	2009	2012
January	4,1	1,3	-9,8	8,8	0,6	1,2
February	3,4	2,6	-11,2	9,0	2,5	0,5
March	4,4	-2,0	-6,0	8,2	1,7	
April	3,0	1,1	-5,8	6,1	2,7	
May	3,5	-2,1	-4,7	3,8	3,4	
June	4,8	-3,3	-3,7	5,1	0,6	
July	5,2	-1,3	-2,0	0,2	0,2	
August	4,6	-3,3	-1,4	0,6	0,5	
September	3,6	-0,7	-0,4	-1,5	2,4	
October	1,8	0,3	-3,5	4,9	-1,4	
November	3,5	-5,1	1,2	3,2	0,2	
December	3,7	-10,5	7,2	1,8	0,3	
Year	3,8	-2,0	-3,4	4,0	1,1	

2/ The annual percentage change is the change in the index of the physical volume of electricity production of the relevant month of the current year compared with the corresponding month of the previous year expressed as a percentage.

Table 6 – Seasonally adjusted indices of the physical volume of electricity production: 2007–2012

Month	Base : 2005=100						% change between current and previous month
	2007	2008	2009	2010	2011	2012	
January	106,5	108,0	97,8	106,2	106,7	107,7	0,4
February	106,6	107,4	98,1	106,1	108,2	106,6	-1,0
March	107,6	105,3	98,9	106,8	108,5		
April	105,4	106,3	100,3	105,8	108,5		
May	108,2	105,8	100,8	104,8	108,5		
June	108,9	105,2	101,1	106,5	107,2		
July	108,4	106,6	104,3	104,6	105,1		
August	108,9	105,2	104,1	105,0	105,9		
September	106,5	105,8	105,4	103,8	106,5		
October	107,1	107,5	103,7	108,9	107,1		
November	108,2	102,7	103,8	107,2	107,4		
December	108,8	98,0	104,9	106,8	107,3		

Table 7 – Total volume of electricity imported: 2007–2012 1/

Month	Gigawatt-hours					
	2007	2008	2009	2010	2011	2012
January	1 088	638	1 102	1 122	1 088	1 085
February	942	885	999	995	730	2/ 1 063
March	973	802	1 064	1 040	1 112	
April	1 055	844	906	931	912	
May	900	761	937	1 074	907	
June	880	1 002	1 088	1 019	1 009	
July	984	1 089	1 040	1 117	979	
August	1 045	1 076	1 072	1 109	1 108	
September	1 026	1 044	920	1 068	974	
October	1 040	645	1 115	770	911	
November	796	711	940	1 018	1 073	
December	619	1 075	1 112	930	1 087	
Year	11 348	10 572	12 295	12 193	11 890	

1/ Physical energy flowing into South Africa as measured by the metering systems at the South African borders.

2/ Preliminary.

Table 8 – Total volume of electricity exported: 2007–2012 1/

Month	Gigawatt-hours					
	2007	2008	2009	2010	2011	2012
January	1 134	1 280	1 096	1 217	1 133	1 247
February	1 060	1 101	979	1 128	1 069	2/ 1 212
March	1 231	1 136	1 100	1 252	1 279	
April	1 132	998	1 086	1 170	1 190	
May	1 203	1 120	1 109	1 177	1 241	
June	1 256	1 162	1 175	1 132	1 174	
July	1 301	1 249	1 223	1 206	1 247	
August	1 252	1 220	1 235	1 275	1 298	
September	1 186	1 203	1 285	1 248	1 288	
October	1 252	1 258	1 288	1 338	1 378	
November	1 256	1 252	1 213	1 316	1 381	
December	1 233	1 189	1 263	1 209	1 286	
Year	14 496	14 168	14 052	14 668	14 964	

1/ Physical energy flowing out of South Africa as measured by the metering systems at the South African borders.

2/ Preliminary.

Table 9a – Electricity produced and consumed in power stations, purchased and sold outside South Africa and available for distribution in South Africa (monthly figures)

		Gigawatt-hours				
		February 2011	January 2012	February 2012 1/	% change between February 2011 and February 2012	Difference between February 2011 and February 2012
Total - All producers	Electricity produced	20 182	21 462	20 292	0,5	110
	Purchased outside South Africa (import) 2/	730	1 085	1 063	45,6	333
	Consumed in power stations and auxiliary systems	1 388	1 624	1 363	-1,8	-25
	Sold outside South Africa (export) 3/	1 069	1 247	1 212	13,4	143
	Electricity available for distribution in South Africa	18 455	19 676	18 779	1,8	324
ESKOM	Electricity produced	19 316	20 612	19 410	0,5	94
	Purchased outside South Africa (import) 2/	730	1 085	1 063	45,6	333
	Consumed in power stations and auxiliary systems	1 326	1 540	1 286	-3,0	-40
	Sold outside South Africa (export) 3/	1 069	1 247	1 212	13,4	143
	Electricity available for distribution in South Africa	17 651	18 910	17 975	1,8	324

1/ Preliminary.

2/ Physical energy flowing into South Africa as measured by the metering systems at the South African borders.

3/ Physical energy flowing out of South Africa as measured by the metering systems at the South African borders.

Table 9b – Electricity produced and consumed in power stations, purchased and sold outside South Africa and available for distribution in South Africa (cumulative figures)

		Gigawatt-hours			
		January to February 2011	January to February 2012 1/	% change between January to February 2011 and January to February 2012	Difference between January to February 2011 and January to February 2012
Total - All producers	Electricity produced	41 415	41 754	0,8	339
	Purchased outside South Africa (import) 2/	1 818	2 148	18,2	330
	Consumed in power stations and auxiliary systems	2 960	2 987	0,9	27
	Sold outside South Africa (export) 3/	2 202	2 459	11,7	257
	Electricity available for distribution in South Africa	38 071	38 455	1,0	384
ESKOM	Electricity produced	39 753	40 022	0,7	269
	Purchased outside South Africa (import) 2/	1 818	2 148	18,2	330
	Consumed in power stations and auxiliary systems	2 815	2 826	0,4	11
	Sold outside South Africa (export) 3/	2 202	2 459	11,7	257
	Electricity available for distribution in South Africa	36 554	36 884	0,9	330

1/ Preliminary.

2/ Physical energy flowing into South Africa as measured by the metering systems at the South African borders.

3/ Physical energy flowing out of South Africa as measured by the metering systems at the South African borders.

Table 10 – Total volume of electricity delivered by Eskom to provinces for 2011 and 2012

Period		Gigawatt-hours 1/									Total South Africa
		Western Cape	Eastern Cape	Northern Cape	Free State	KwaZulu-Natal	North West	Gauteng	Mpumalanga	Limpopo	
2011	January	1 962	777	408	721	3 417	2 187	4 738	3 052	1 021	18 283
	February	1 881	734	372	665	3 256	2 044	4 394	2 808	937	17 091
	March	2 031	773	417	774	3 631	2 292	4 955	3 017	1 063	18 953
	April	1 877	726	389	753	3 432	2 159	5 016	2 946	992	18 290
	May	1 980	811	406	772	3 624	2 283	5 435	3 106	1 000	19 417
	June	1 966	826	417	812	3 527	2 097	5 804	2 945	1 020	19 414
	July	2 014	876	428	814	3 639	2 086	5 971	2 852	972	19 652
	August	1 985	884	414	783	3 574	2 029	5 727	2 830	960	19 186
	September	1 752	840	418	688	3 381	2 172	4 985	2 788	1 028	18 052
	October	1 801	840	447	709	3 547	2 268	4 991	2 997	1 051	18 651
	November	1 767	840	428	666	3 429	2 248	4 814	2 916	1 035	18 143
	December	1 763	783	441	647	3 466	2 107	4 426	2 895	1 050	17 578
	Year	22 779	9 710	4 985	8 804	41 923	25 972	61 256	35 152	12 129	222 710
	Year to date	3 843	1 511	780	1 386	6 673	4 231	9 132	5 860	1 958	35 374
2012	January	1 889	844	464	706	3 527	2 237	4 631	2 910	1 038	18 246
	February 2/	1 922	816	403	668	3 271	2 034	4 509	2 779	988	17 390
	Year to date	3 811	1 660	867	1 374	6 798	4 271	9 140	5 689	2 026	35 636

1/ Wholesale energy (Gigawatt-hours) as delivered by Eskom to the various provinces.

2/ Preliminary.

Explanatory notes

- Introduction**
- 1 Statistics South Africa (Stats SA) conducts a monthly sample survey of the electricity industry covering electricity undertakings and establishments (branches). This statistical release contains information regarding the volume of electricity units generated and available for distribution in South Africa, the volume of units purchased and sold outside South Africa and the volume of units distributed by Eskom by province on a monthly basis. Both actual and seasonally adjusted figures are published.
 - 2 This statistical release reflects indices of the physical volume of electricity production on the basis of 2005=100. In accordance with international practice, the indices have to be rebased every five years to a new base year.
 - 3 In order to improve timeliness of the publication, some information for the current month may have been estimated due to late submission by respondents. These estimates will be revised in the next statistical release(s) as soon as actual information is available.
- Purpose of the survey**
- 4 The results of the monthly electricity generated and available for distribution survey are used to compile estimates of the gross domestic product (GDP) and its components, which are used in monitoring the state of the economy and formulation of economic policy.
- Scope of the survey**
- 5 This survey covers electricity undertakings and establishments conducting activities concerned with the generation or transmission and distribution of electricity. It includes electrical power installations, which, as subsidiary divisions of undertakings, produce electricity for regular use by these undertakings.
- Classification**
- 6 The 1993 edition of the *Standard Industrial Classification of all Economic Activities (SIC)*, Fifth Edition, Report No. 09-90-02, was used to classify the statistical units in the survey. The SIC is based on the 1990 *International Standard Industrial Classification of all Economic Activities (ISIC)* with suitable adaptations for local conditions. Each statistical unit is classified to an industry, which reflects the predominant activity of the electricity undertaking or establishment.
- Response rate**
- 7 The collection rate for the survey on electricity generated and available for distribution for February 2012 was 100%. Improved collection rate for January 2012 was 100%.
- Statistical unit**
- 8 The basic statistical unit for the collection of information is the electricity undertaking or establishment. The electricity undertaking or establishment is the smallest economic unit that functions as a separate entity. Each statistical unit is classified to an industry (see paragraph 5).
- Survey methodology and design**
- 9 All statistical units are stratified by type of economic activity according to the *Standard Industrial Classification of all Economic Activities (SIC)* and measure of size, where measure of size is the volume of electricity generated by the electricity undertaking or establishment. All large undertakings or establishments (size category one cases) are completely enumerated. A sample is drawn from medium and small size undertakings and establishments by systematically selecting undertakings or establishments within each size category. An electricity undertaking or establishment with a total generating capacity of less than 500 kilowatt is excluded from the sample.
 - 10 The survey is conducted by mail, email and telephone. Information is collected from a sample of 23 electricity undertakings or establishments.
- Monthly production indices**
- 11 The calculation of the monthly production indices is based on the volume of electricity units produced.

Benchmarking	12	The index of physical volume of electricity production should provide an accurate reflection of the trend of activities of the relevant industry. The level of activities, as measured by the monthly electricity generated and available for distribution survey, is based on information received from a sample of electricity undertakings and establishments. These levels are weighted according to the original sample and designed to represent the population of electricity undertakings and establishments. It is necessary to adjust the level of activities as measured by the monthly sample survey to the level of activities as measured periodically by the Census of electricity, gas and steam. This procedure, whereby the latest results of an economic census are used to compile more accurate level estimates for a certain year, is known as benchmarking.
	13	The results of the 1995 Census of electricity, gas and steam served as a benchmark to verify or adjust the level of the monthly physical volume of electricity production indices collected through the monthly sample survey. The level adjustments were done on the volume indices for August of the relevant census year (the 1995 census year covered the period 1 January 1995 to 31 December 1995 and therefore, the benchmarking was done using the index of August 1995 as reference point).
Seasonal adjustment	14	Seasonally adjusted estimates of all items are generated each month, using the X-12-ARIMA Seasonal Adjustment Program developed by US Bureau of the Census Economic Research and Analyses Division, 1968. Seasonal adjustment is a means of removing the estimated effects of normal seasonal variation from the series so that the effects of other influences on the series can be more clearly recognized. Seasonal adjustment does not aim to remove irregular or non-seasonal influences, which may be present in any particular month. Influences that are volatile or unsystematic can still make it difficult to interpret the movement of the series even after adjustment for seasonal variations. This means the month-to-month movements of seasonally adjusted estimates may not be reliable indicators of trend behaviour. The X12-ARIMA procedure for electricity generated and available for distribution is described in more detail on the Stats SA website at http://www.statssa.gov.za/publications/P4141/electricity_seasonal_adjustment_note_2011.pdf
Trend cycle	15	The trend is the long-term pattern or movement of a time series. The X-12-ARIMA Seasonal Adjustment Program is used for smoothing seasonally adjusted estimates.
Related publications	16	Users may also wish to refer to the following publications which are available from Stats SA : <ul style="list-style-type: none">• <i>Bulletin of Statistics</i>; and• <i>SA Statistics</i>.
Rounding-off of figures	17	Where necessary, the figures in the tables have been rounded off to the nearest digit shown. There may therefore be slight discrepancies between the sums of the constituent items and the totals shown.

Glossary

Consumption of electricity	For purposes of this release the term 'consumption of electricity' is used interchangeably with the term 'electricity available for distribution'.										
Electricity undertaking	An electricity undertaking is an undertaking concerned with the generation or transmission and distribution of electricity, including electrical power installations, which, as subsidiary divisions of undertakings, produce electricity for regular use by these undertakings.										
Index of physical volume of electricity production	A statistical measure of the change in the volume of production of electricity in a given period and the volume of production of electricity in the base period. The base period is 2005. The production in the base period is set at 100.										
Industry	An industry consists of a group of undertakings or establishments engaged in the same or similar kinds of economic activity. Industries are defined in the 1993 <i>System of National Accounts (1993 SNA)</i> in the same way as in the <i>Standard Industrial Classification of all Economic Activities (SIC)</i> , Fifth Edition, Report No. 09-90-02.										
Unit of electricity	One gigawatt-hour of electricity is equal to one million kilowatt-hours. A kilowatt-hour is the basic unit of electrical energy equal to one kilowatt of power supplied to or taken from an electric circuit steadily for one hour. One kilowatt-hour equals one thousand watt-hours.										
Symbols and abbreviations	<table> <tr> <td>GDP</td> <td>Gross domestic product</td> </tr> <tr> <td>ISIC</td> <td>International Standard Industrial Classification</td> </tr> <tr> <td>SIC</td> <td>Standard Industrial Classification of all Economic Activities</td> </tr> <tr> <td>Stats SA</td> <td>Statistics South Africa</td> </tr> <tr> <td>*</td> <td>Revised figures</td> </tr> </table>	GDP	Gross domestic product	ISIC	International Standard Industrial Classification	SIC	Standard Industrial Classification of all Economic Activities	Stats SA	Statistics South Africa	*	Revised figures
GDP	Gross domestic product										
ISIC	International Standard Industrial Classification										
SIC	Standard Industrial Classification of all Economic Activities										
Stats SA	Statistics South Africa										
*	Revised figures										

Technical enquiries for electricity

Onica Mapimele	Telephone number: (012) 310 4897 Email: onicama@statssa.gov.za
Nicolai Claassen	Telephone number: (012) 310 0142 Email: nicolaic@statssa.gov.za

General information

Stats SA publishes approximately 300 different statistical releases each year. It is not economically viable to produce them in more than one of South Africa's eleven official languages. Since the releases are used extensively, not only locally but also by international economic and social-scientific communities, Stats SA releases are published in English only.

Stats SA has copyright on this publication. Users may apply the information as they wish, provided that they acknowledge Stats SA as the source of the basic data wherever they process, apply, utilise, publish or distribute the data: and also that they specify that the relevant application and analysis (where applicable) result from their own processing of the data.

Advanced release calendar

An advanced release calendar is disseminated on www.statssa.gov.za

Stats SA products

A complete set of Stats SA publications is available at the Stats SA Library and the following libraries:

National Library of South Africa, Pretoria Division
National Library of South Africa, Cape Town Division
Natal Society Library, Pietermaritzburg
Library of Parliament, Cape Town
Bloemfontein Public Library
Johannesburg Public Library
Eastern Cape Library Services, King William's Town
Central Regional Library, Polokwane
Central Reference Library, Nelspruit
Central Reference Collection, Kimberley
Central Reference Library, Mmabatho

Stats SA also provides a subscription service.

Electronic services

A large range of data is available via on-line services. For more detail about our electronic services, contact Stats SA's user information service at (012) 310 8600.

You can visit us on the Internet at: www.statssa.gov.za

General enquiries

User information services Telephone number: (012) 310 8600
Email: info@statssa.gov.za

Orders/subscription services Telephone number: (012) 310 8358
Email: magdaj@statssa.gov.za

Postal address: Private Bag X44, Pretoria, 0001

Produced by Stats SA