

Statistical release

P4141

Electricity generated and available for distribution (preliminary)

December 2007

**Embargoed until:
31 January 2008
13:00**

Enquiries:

User information services
Tel: (012) 310 8600/ 8390/ 8351

Forthcoming issue:

January 2008

Expected release date

6 March 2008

Contents

Page

SUMMARY OF FINDINGS: ELECTRICITY GENERATED AND AVAILABLE FOR DISTRIBUTION (DECEMBER 2007).....**2**

Key findings**2**

Key figures**3**

Table A - Selected key figures regarding electricity generated and available for distribution for December 20073

Table B - Percentage change in the seasonally adjusted quantity of electricity generated and available for distribution between the current quarter and the previous quarter3

Table C - Percentage change between the current quarter and the corresponding quarter of the previous year3

Figure 1 - Electricity produced and available for distribution in South Africa from 2004 to 20074

Table 1 - Total volume of electricity available for distribution in South Africa: 2002 to 20075

Table 2 - Percentage change in electricity available for distribution in South Africa: 2002 to 20075

Table 3 - Seasonally adjusted total volume of electricity available for distribution in South Africa: 2002 to 20076

Table 4 - Indices of the physical volume of electricity production: 2002 to 20077

Table 5 - Percentage change in indices of the physical volume of electricity production: 2002 to 20077

Table 6 - Seasonally adjusted indices of the physical volume of electricity production: 2002 to 20078

Table 7 - Total volume of electricity imported: 2002 to 20079

Table 8 - Total volume of electricity exported: 2002 to 20079

Table 9a - Electricity produced and consumed in power stations, purchased and sold outside South Africa and available for distribution in South Africa (monthly figures) 10

Table 9b - Electricity produced and consumed in power stations, purchased and sold outside South Africa and available for distribution in South Africa (cumulative figures)..... 10

Table 10 - Electricity distributed by Eskom by province for 2006 and 2007 1/ 11

Explanatory Notes.....**12**

Glossary.....**14**

General information**15**

SUMMARY OF FINDINGS: ELECTRICITY GENERATED AND AVAILABLE FOR DISTRIBUTION (DECEMBER 2007)

Key findings

Consumption of electricity increases in 2007

The estimated consumption of electricity in December 2007 increased by 1,4% (257 Gigawatt-hours) compared with December 2006 (see tables A and 9a). The estimated volume of electricity consumed (available for distribution) for the fourth quarter of 2007 increased by 2,7% (1 568 Gigawatt-hours) compared with the corresponding quarter of 2006 (see tables A and C). Overall the consumption for the year 2007 increased by 4,4% (10 091 Gigawatt-hours) compared with the year 2006 (see tables A and 9b).

Although electricity distribution increased from 2006 to 2007, there was a decrease of 1,3% in the seasonally adjusted consumption estimates during the fourth quarter of 2007 compared with the third quarter (see table A).

Production of electricity increases in 2007

The estimated production of electricity during 2007 increased by 3,8% (9 681 Gigawatt-hours) compared with 2006 (see tables A and 9b). Similarly electricity production by Eskom increased by 3,8% (9 344 Gigawatt-hours) during this period. The estimated production of electricity for the fourth quarter of 2007 increased by 2,9% (1 873 Gigawatt-hours) compared with the fourth quarter of 2006 (see table C).

Imports and exports of electricity during 2007

The total volume of electricity imported from outside South African borders increased from 9 782 Gigawatt-hours in 2006 to 11 318 Gigawatt-hours in 2007, which represents an increase of 15,7% (1 536 Gigawatt-hours) (see table 9b). The amount of electricity imported decreased by 2,4% (60 Gigawatt-hours) during the fourth quarter of 2007 compared with the same quarter of 2006 (see table C). The volume of electricity distributed outside South African borders during 2007 increased by 3,3% (451 Gigawatt-hours) compared with 2006 (see table 9b). The volume of electricity exported during the last quarter of 2007 showed an increase of 2,8% (103 Gigawatt-hours) compared with the corresponding quarter of 2006 (see table C).

Provincial distribution of electricity by Eskom for 2007 compared with 2006

Eskom reported higher distribution of electricity during 2007 than during 2006 to all provinces except KwaZulu-Natal. The largest percentage increases were reported for Eastern Cape (18,2% or 1 504 Gigawatt-hours), North West (8,6% or 2 096 Gigawatt-hours), Mpumalanga (7,4% or 2 314 Gigawatt-hours) and Gauteng (3,8% or 2 269 Gigawatt-hours) (see table 10). The proportion of electricity distributed to the provinces remained fairly stable between the latest two years. There was 0,9 of a percentage point less (20,1% to 19,2%) distributed to KwaZulu-Natal and 0,4 of a percentage point less to Limpopo (5,4% to 5,0%). These proportional decreases were counteracted by increases in consumption of 0,5 of a percentage point (3,9% to 4,4%) in the Eastern Cape and 0,4 of a percentage point each in North West and Mpumalanga.

Key figures

Table A - Selected key figures regarding electricity generated and available for distribution for December 2007

Estimates	December 2007 1/	% change between December 2006 and December 2007	% change between October to December 2006 and October to December 2007	% change between January to December 2006 and January to December 2007
Electricity available for distribution (Gigawatt-hours)	19 166	1,4	2,7	4,4
Index of the physical volume of electricity production (2005=100)	104,6	3,7	3,0	3,8

1/ Preliminary.

Seasonally adjusted estimates	December 2007	% change between November and December 2007	% change between July to September 2007 and October to December 2007
Electricity available for distribution (Gigawatt-hours)	19 904	-0,9	-1,3
Index of the physical volume of electricity production (2005=100)	108,5	0,1	-0,4

Table B - Percentage change in the seasonally adjusted quantity of electricity generated and available for distribution between the current quarter and the previous quarter

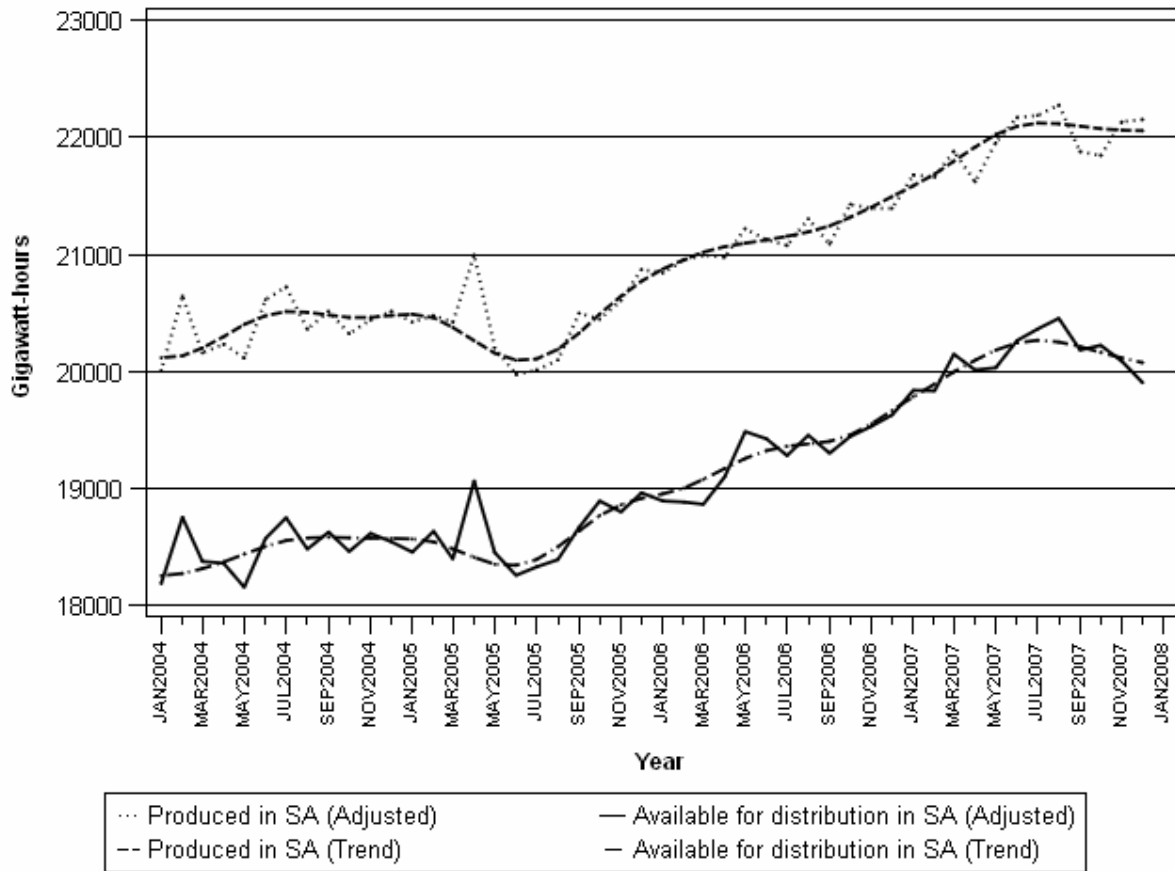
Gigawatt-hours	Seasonally adjusted quantity July to September 2007	Seasonally adjusted quantity October to December 2007	% change between July to September 2007 and October to December 2007	Quantity difference between July to September 2007 and October to December 2007
Electricity produced	66 339	66 126	-0,3	-213
Electricity available for distribution in South Africa	60 997	60 213	-1,3	-784

Table C - Percentage change between the current quarter and the corresponding quarter of the previous year

Gigawatt-hours	Actual quantity October to December 2006	Actual quantity October to December 2007	% change between October to December 2006 and October to December 2007	Quantity difference between October to December 2006 and October to December 2007
Electricity produced	63 552	65 425	2,9	1 873
Purchased outside South Africa (import)	2 509	2 449	-2,4	-60
Consumed in power stations and auxiliary systems	4 620	4 760	3,0	140
Sold outside South Africa (export)	3 626	3 729	2,8	103
Electricity available for distribution in South Africa	57 816	59 384	2,7	1 568

Figure 1 below shows the seasonally adjusted and trend patterns for electricity produced and available for distribution in South Africa between January 2004 and December 2007. There was a gradual increase in the trend cycles for the first half of 2004, a period of lateral movement up to February 2005 and a trough between March and October 2005. After a period of sustained growth thereafter, the trends have shown a downward movement from August 2007.

Figure 1 - Electricity produced and available for distribution in South Africa from 2004 to 2007



P J Lehohla
Statistician-General

Detailed results: Tables

Table 1 - Total volume of electricity available for distribution in South Africa: 2002 to 2007

	2002	2003	2004	2005	2006	2007
January	16 191	17 095	17 850	18 149	18 603	19 560
February	15 215	16 168	17 277	17 169	17 396	18 298
March	16 552	17 655	18 476	18 487	18 982	20 269
April	16 362	16 905	17 524	18 133	18 122	18 984
May	17 852	18 159	18 909	19 224	20 312	20 907
June	18 017	18 330	19 337	18 983	20 166	21 027
July	18 956	19 183	20 156	19 657	20 632	21 785
August	18 064	18 714	19 265	19 191	20 307	21 350
September	17 125	17 526	18 362	18 384	18 987	19 850
October	17 741	18 480	18 714	19 127	19 663	20 433
November	17 233	17 790	18 314	18 523	19 244	19 785
December	16 712	17 456	17 754	18 230	18 909	1/ 19 166
Year	206 020	213 461	221 938	223 257	231 323	241 414

1/ Preliminary.

Table 2 - Annual percentage change in electricity available for distribution in South Africa: 2002 to 2007

	Percentage					
	2002	2003	2004	2005	2006	2007
January	0,8	5,6	4,4	1,7	2,5	5,1
February	2,3	6,3	6,9	-0,6	1,3	5,2
March	1,4	6,7	4,7	0,1	2,7	6,8
April	5,5	3,3	3,7	3,5	-0,1	4,8
May	5,5	1,7	4,1	1,7	5,7	2,9
June	7,3	1,7	5,5	-1,8	6,2	4,3
July	5,2	1,2	5,1	-2,5	5,0	5,6
August	4,4	3,6	2,9	-0,4	5,8	5,1
September	5,2	2,3	4,8	0,1	3,3	4,5
October	5,6	4,2	1,3	2,2	2,8	3,9
November	8,0	3,2	2,9	1,1	3,9	2,8
December	9,8	4,5	1,7	2,7	3,7	1,4
Year	5,1	3,6	4,0	0,6	3,6	4,4

Table 3 - Seasonally adjusted total volume of electricity available for distribution in South Africa: 2002 to 2007

	Gigawatt-hours						% change between current and previous month
	2002	2003	2004	2005	2006	2007	
January	16 518	17 438	18 188	18 456	18 893	19 838	1,1
February	16 567	17 607	18 754	18 635	18 884	19 834	-0,0
March	16 461	17 584	18 377	18 398	18 865	20 147	1,6
April	17 073	17 687	18 361	19 064	19 098	20 012	-0,7
May	17 157	17 439	18 157	18 453	19 486	20 031	0,1
June	17 308	17 596	18 573	18 258	19 424	20 263	1,2
July	17 598	17 827	18 750	18 330	19 281	20 362	0,5
August	17 284	17 941	18 482	18 392	19 455	20 453	0,4
September	17 305	17 770	18 627	18 668	19 301	20 182	-1,3
October	17 447	18 213	18 462	18 893	19 444	20 223	0,2
November	17 513	18 082	18 616	18 800	19 531	20 086	-0,7
December	17 620	18 327	18 546	18 963	19 628	19 904	-0,9

Table 4 - Indices of the physical volume of electricity production: 2002 to 2007

	Base : 2005=100					
	2002	2003	2004	2005	2006	2007
January	84,7	89,6	95,5	97,6	99,8	103,9
February	79,0	84,7	92,2	91,7	94,0	97,2
March	85,7	92,9	98,7	100,2	103,3	107,8
April	85,1	90,1	94,7	98,1	98,0	100,9
May	94,1	97,2	102,4	102,9	108,1	112,0
June	94,8	98,5	105,0	101,6	107,3	112,5
July	99,4	102,5	109,5	105,5	110,8	116,6
August	94,5	102,4	104,3	103,0	109,1	114,1
September	90,3	97,0	99,5	99,1	101,8	105,5
October	94,3	102,2	102,1	102,5	107,2	109,1
November	91,5	96,4	98,5	99,4	103,3	106,9
December	87,4	94,0	96,0	98,2	100,9	1/ 104,6
Year	90,1	95,6	99,9	100,0	103,6	107,6

1/ Preliminary.

Table 5 – Annual percentage change in indices of the physical volume of electricity production: 2002 to 2007

	2002	2003	2004	2005	2006	2007
January	-0,1	5,8	6,6	2,2	2,3	4,1
February	1,9	7,2	8,9	-0,5	2,5	3,4
March	1,2	8,4	6,2	1,5	3,1	4,4
April	5,7	5,9	5,1	3,6	-0,1	3,0
May	6,2	3,3	5,3	0,5	5,1	3,6
June	9,0	3,9	6,6	-3,2	5,6	4,8
July	4,0	3,1	6,8	-3,7	5,0	5,2
August	1,7	8,4	1,9	-1,2	5,9	4,6
September	4,5	7,4	2,6	-0,4	2,7	3,6
October	6,7	8,4	-0,1	0,4	4,6	1,8
November	9,2	5,4	2,2	0,9	3,9	3,5
December	10,4	7,6	2,1	2,3	2,7	3,7
Year	5,0	6,2	4,4	0,1	3,7	3,8

The percentage change is the change in the index of the physical volume of electricity production of the relevant year compared with the index of the physical volume of electricity production of the previous year expressed as a percentage.

Table 6 - Seasonally adjusted indices of the physical volume of electricity production: 2002 to 2007

	Base : 2005=100						% change between current and previous month
	2002	2003	2004	2005	2006	2007	
January	86,8	92,0	98,1	100,1	102,3	106,4	1,5
February	86,8	93,0	101,1	100,3	102,7	106,1	-0,3
March	85,8	93,1	98,7	99,9	102,9	107,2	1,0
April	89,3	94,4	99,2	102,9	103,0	106,2	-0,9
May	90,6	93,6	98,7	99,1	104,1	107,8	1,5
June	90,8	94,3	100,6	97,5	103,0	108,0	0,2
July	91,8	94,8	101,6	98,1	103,2	108,7	0,6
August	90,1	97,9	99,7	98,5	104,3	109,2	0,5
September	90,7	97,7	100,5	100,5	103,4	107,3	-1,7
October	91,7	99,5	99,6	100,2	105,1	107,1	-0,2
November	93,0	98,0	100,1	100,9	104,8	108,4	1,2
December	92,6	99,0	100,5	102,2	104,8	108,5	0,1

Table 7 - Total volume of electricity imported: 2002 to 2007

Month	Gigawatt-hours					
	2002	2003	2004	2005	2006	2007
January	670	705	828	729	872	1 086
February	643	637	811	714	646	939
March	783	706	863	533	581	970
April	733	547	641	598	587	1 052
May	658	569	547	849	879	897
June	704	518	560	813	881	880
July	702	792	607	856	926	980
August	721	424	618	883	930	1 041
September	637	266	590	686	971	1 024
October	454	272	536	836	682	1 038
November	477	583	746	865	862	794
December	691	720	679	837	965	1/ 617
Year	7 873	6 739	8 026	9 199	9 782	11 318

1/ Preliminary.

Table 8 - Total volume of electricity exported: 2002 to 2007

Month	Gigawatt-hours					
	2002	2003	2004	2005	2006	2007
January	558	578	1 037	1 030	1 056	1 133
February	478	508	977	901	1 050	1 060
March	529	607	1 027	968	1 129	1 119
April	525	619	951	991	1 017	1 127
May	578	805	944	1 083	1 046	1 193
June	601	798	1 057	1 096	1 102	1 248
July	614	944	1 140	1 102	1 239	1 292
August	605	1 030	1 049	1 144	1 262	1 251
September	628	1 051	1 048	1 134	1 239	1 065
October	626	1 116	1 112	1 161	1 311	1 251
November	600	1 025	1 082	1 119	1 186	1 253
December	608	1 055	1 029	1 155	1 129	1/ 1 225
Year	6 950	10 136	12 453	12 884	13 766	14 217

1/ Preliminary.

Table 9a - Electricity produced and consumed in power stations, purchased and sold outside South Africa and available for distribution in South Africa (monthly figures)

		Gigawatt-hours				
		December 2006	November 2007	December 2007 1/	% Change between December 2006 and December 2007	Difference between December 2006 and December 2007
Total - All producers	Electricity produced	20 596	21 810	21 343	3,6	747
	Purchased outside South Africa (import)	965	794	617	-36,1	-348
	Consumed in power stations and auxiliary systems	1 523	1 566	1 569	3,0	46
	Sold outside South Africa (export)	1 129	1 253	1 225	8,5	96
	Electricity available for distribution in South Africa	18 909	19 785	19 166	1,4	257
ESKOM	Electricity produced	19 761	20 918	20 459	3,5	698
	Purchased outside South Africa (import)	965	794	617	-36,1	-348
	Consumed in power stations and auxiliary systems	1 460	1 489	1 502	2,9	42
	Sold outside South Africa (export)	1 129	1 253	1 225	8,5	96
	Electricity available for distribution in South Africa	18 136	18 969	18 349	1,2	213

Table 9b - Electricity produced and consumed in power stations, purchased and sold outside South Africa and available for distribution in South Africa (cumulative figures)

		Gigawatt-hours			
		January to December 2006	January to December 2007 1/	% Change between January to December 2006 and January to December 2007	Difference between January to December 2006 and January to December 2007
Total - All producers	Electricity produced	253 798	263 479	3,8	9 681
	Purchased outside South Africa (import)	9 782	11 318	15,7	1 536
	Consumed in power stations and auxiliary systems	18 491	19 163	3,6	672
	Sold outside South Africa (export)	13 766	14 217	3,3	451
	Electricity available for distribution in South Africa	231 323	241 414	4,4	10 091
ESKOM	Electricity produced	243 594	252 938	3,8	9 344
	Purchased outside South Africa (import)	9 782	11 318	15,7	1 536
	Consumed in power stations and auxiliary systems	17 569	18 335	4,4	766
	Sold outside South Africa (export)	13 766	14 217	3,3	451
	Electricity available for distribution in South Africa	222 039	231 701	4,4	9 662

1/ Preliminary.

Table 10 - Electricity distributed by Eskom by province for 2006 and 2007 1/

		Gigawatt-hours									
		Western Cape	Eastern Cape	Northern Cape	Free State	KwaZulu-Natal	North West	Gauteng	Mpumalanga	Limpopo	Total South Africa
2006	January	1 852	626	388	712	3 611	2 073	4 442	2 635	904	17 242
	February	1 703	595	339	721	3 410	1 934	4 129	2 343	1 023	16 197
	March	1 879	639	394	740	3 747	2 019	4 690	2 684	890	17 682
	April	1 809	591	357	730	3 572	1 904	4 514	2 550	874	16 901
	May	1 906	665	374	809	3 826	2 082	5 525	2 784	955	18 925
	June	1 832	670	363	732	3 870	2 093	5 476	2 648	964	18 647
	July	1 946	788	399	810	3 657	2 151	5 707	2 661	998	19 116
	August	1 939	780	391	826	3 563	2 103	5 605	2 560	1 000	18 767
	September	1 828	753	409	736	3 456	1 963	4 963	2 487	993	17 588
	October	1 909	769	435	786	3 590	2 079	5 045	2 644	1 037	18 294
	November	1 867	745	439	762	3 443	1 982	4 965	2 687	958	17 848
	December	1 912	640	439	777	3 429	2 036	4 667	2 705	924	17 529
	Year	22 382	8 261	4 727	9 141	43 174	24 419	59 728	31 388	11 520	214 736
2007	January	1 955	770	456	780	3 541	2 168	4 809	2 835	930	18 244
	February	1 817	746	410	718	3 326	2 074	4 583	2 561	878	17 113
	March	2 018	816	467	793	3 650	2 299	5 070	2 884	965	18 962
	April	1 861	854	371	769	3 416	2 079	4 758	2 665	915	17 688
	May	2 012	951	401	825	3 702	2 279	5 563	2 866	975	19 574
	June	1 989	828	413	841	3 643	2 231	5 788	2 814	957	19 504
	July	2 007	820	442	884	3 805	2 257	6 013	2 974	966	20 168
	August	2 060	825	417	840	3 738	2 268	5 635	2 918	961	19 662
	September	1 904	884	401	790	3 581	2 254	4 930	2 764	927	18 435
	October	1 985	812	413	775	3 693	2 335	5 125	2 878	944	18 960
	November	1 907	763	419	801	3 574	2 285	4 963	2 773	915	18 400
	December 2/	1 895	696	417	740	3 524	1 986	4 760	2 770	937	17 725
	Year	23 410	9 765	5 027	9 556	43 193	26 515	61 997	33 702	11 270	224 435

1/ Wholesale energy as delivered by Eskom to the various provinces.

2/ Preliminary.

Explanatory Notes

Introduction	1	Statistics South Africa (Stats SA) conducts a monthly sample survey of the electricity industry covering electricity undertakings and establishments (branches). This statistical release contains information regarding the number of electricity units generated and available for distribution in South Africa, the number of units purchased and sold outside South Africa and the number of units distributed by Eskom by province on a monthly basis. Both actual and seasonally adjusted figures are published.
	2	This statistical release reflects indices of the physical volume of electricity production on the basis of 2005=100. In accordance with international practice, the indices have to be rebased every five years to a new base year.
	3	In order to improve timeliness of the publication, some information for the current month may have been estimated due to late submission by respondents. These estimates will be revised in the next statistical release(s) as soon as actual information is available.
Purpose of the survey	4	The results of the monthly electricity generated and available for distribution survey are used to compile estimates of the Gross Domestic Product (GDP) and its components, which are used in monitoring the state of the economy and formulation of economic policy.
Scope of the survey	5	This survey covers electricity undertakings and establishments conducting activities concerned with the generation or transmission and distribution of electricity, including electrical power installations, which, as subsidiary divisions of undertakings, produce electricity for regular use by these undertakings.
Classification	6	The 1993 edition of the <i>Standard Industrial Classification of all Economic Activities (SIC)</i> , Fifth Edition, Report No. 09-90-02, was used to classify the statistical units in the survey. The SIC is based on the 1990 <i>International Standard Industrial Classification of all Economic Activities (ISIC)</i> with suitable adaptations for local conditions. Each statistical unit is classified to an industry, which reflects the predominant activity of the electricity undertaking or establishment.
Response rate	7	The response rate for the survey on electricity generated and available for distribution for December 2007 was 100%.
Statistical unit	8	The basic statistical unit for the collection of information is the electricity undertaking or establishment. The electricity undertaking or establishment is the smallest economic unit that functions as a separate entity. Each statistical unit is classified to an industry (see paragraph 5).
Survey methodology and design	9	All statistical units are stratified by type of economic activity according to the <i>Standard Industrial Classification of all Economic Activities (SIC)</i> and measure of size, where measure of size is the volume of electricity generated by the electricity undertaking or establishment. All large undertakings or establishments (size category one cases) are completely enumerated. A sample is drawn from medium and small size undertakings and establishments by systematically selecting undertakings or establishments within each size category. An electricity undertaking or establishment with a total generating capacity of less than 500 kilowatt is excluded from the sample.
	10	The survey is conducted by mail each month collecting information from a sample of 22 electricity undertakings or establishments.

Monthly production indices	11	The calculation of the monthly production indices is based on the number of electricity units produced.
Benchmarking	12	The index of physical volume of electricity production should provide an accurate reflection of the trend of activities of the relevant industry. The level of activities as measured by the monthly electricity generated and available for distribution survey is based on information received from a sample of electricity undertakings and establishments, which are weighted according to the original sample, designed in order to represent the population of electricity undertakings and establishments. It is necessary to adjust the level of activities as measured by the monthly sample survey to the level of activities as measured periodically by the Census of electricity, gas and steam. This procedure, whereby the latest results of an economic census are used to compile more accurate level estimates for a certain year, is known as benchmarking.
	13	The results of the 1995 Census of electricity, gas and steam served as benchmarks to verify or adjust the level of the monthly physical volume of electricity production indices collected through the monthly sample survey. The level adjustments were done on the volume indices for August of the relevant census year (the 1995 census year covered the period 1 January 1995 to 31 December 1995 and therefore, the benchmarking was done using the index of July 1995 as reference point).
Seasonal adjustment	14	Seasonally adjusted estimates of all items are generated each month, using the X-11 Seasonal Adjustment Program developed by US Bureau of the Census Economic Research and Analyses Division, 1968. Seasonal adjustment is a means of removing the estimated effects of normal seasonal variation from the series so that the effects of other influences on the series can be more clearly recognized. Seasonal adjustment does not aim to remove irregular or non-seasonal influences, which may be present in any particular month. Influences that are volatile or unsystematic can still make it difficult to interpret the movement of the series even after adjustment for seasonal variations. This means the month-to-month movements of seasonally adjusted estimates may not be reliable indicators of trend behaviour.
Trend cycle	15	The trend is the long-term pattern or movement of a time series. The X-11 Seasonal Adjustment Program is used for smoothing seasonally adjusted estimates.
Related publications	16	Users may also wish to refer to the following publications which are available from Stats SA - <ul style="list-style-type: none"> • <i>Bulletin of Statistics.</i> • <i>SA Statistics.</i>
Unpublished statistics	17	In some cases Stats SA can also make available statistics, which are not published. The statistics can be made available as computer printouts, on diskette or CD. Generally a charge is made for providing unpublished statistics.
Rounding-off figures	18	The figures in the tables have, where necessary, been rounded off to the nearest digit shown. There may, therefore, be slight discrepancies between the sums of the constituent items and the totals shown.
Pre-release policy	19	Stats SA pre-release policy may be inspected at its website, www.statssa.gov.za .

Glossary

Electricity undertaking	An electricity undertaking is an undertaking concerned with the generation or transmission and distribution of electricity, including electrical power installations, which as subsidiary divisions of undertakings produce electricity for regular use by these undertakings.										
Index of physical volume of electricity production	A statistical measure of the change in the volume of production of electricity in a given period and the volume of production of electricity in the base period. The base period is 2005. The production in the base period is set at 100.										
Industry	An industry consists of a group of undertakings or establishments engaged in the same or similar kinds of economic activity. Industries are defined in the 1993 <i>System of National Accounts (1993 SNA)</i> in the same way as in the <i>Standard Industrial Classification of all Economic Activities (SIC)</i> , Fifth Edition, Report No. 09-90-02.										
Unit of electricity	One gigawatt-hour of electricity is equal to one million kilowatt-hours. A kilowatt-hour is the basic unit of electrical energy equal to one kilowatt of power supplied to or taken from an electric circuit steadily for one hour. One kilowatt-hour equals one thousand watt-hours.										
Symbols and abbreviations	<table border="0"> <tr> <td>GDP</td> <td>Gross Domestic Product</td> </tr> <tr> <td>ISIC</td> <td>International Standard Industrial Classification</td> </tr> <tr> <td>SIC</td> <td>Standard Industrial Classification of all Economic Activities</td> </tr> <tr> <td>Stats SA</td> <td>Statistics South Africa</td> </tr> <tr> <td>*</td> <td>Revised figures</td> </tr> </table>	GDP	Gross Domestic Product	ISIC	International Standard Industrial Classification	SIC	Standard Industrial Classification of all Economic Activities	Stats SA	Statistics South Africa	*	Revised figures
GDP	Gross Domestic Product										
ISIC	International Standard Industrial Classification										
SIC	Standard Industrial Classification of all Economic Activities										
Stats SA	Statistics South Africa										
*	Revised figures										

General information

Stats SA publishes approximately 300 different statistical releases each year. It is not economically viable to produce them in more than one of South Africa's eleven official languages. Since the releases are used extensively, not only locally but also by international economic and social-scientific communities, Stats SA releases are published in English only.

Stats SA has copyright on this publication. Users may apply the information as they wish, provided that they acknowledge Stats SA as the source of the basic data wherever they process, apply, utilise, publish or distribute the data: and also that they specify that the relevant application and analysis (where applicable) result from their own processing of the data.

Advanced release calendar

An advanced release calendar is disseminated on www.statssa.gov.za

Stats SA products

A complete set of Stats SA publications is available at the Stats SA Library and the following libraries:

National Library of South Africa, Pretoria Division
National Library of South Africa, Cape Town Division
Natal Society Library, Pietermaritzburg
Library of Parliament, Cape Town
Bloemfontein Public Library
Johannesburg Public Library
Eastern Cape Library Services, King William's Town
Central Regional Library, Polokwane
Central Reference Library, Nelspruit
Central Reference Collection, Kimberley
Central Reference Library, Mmabatho

Stats SA also provides a subscription service.

Electronic services

A large range of data is available via on-line services, diskette, CD and computer printouts. For more details about our electronic data services, contact (012) 310 8600/8390/8351/8496/4892/8095.

You can visit us on the Internet at: www.statssa.gov.za

General enquiries

Telephone number: (012) 336 0142 (technical enquiries)
(012) 310 8161 (orders)
(012) 310 4883/ 4885/ 8018 (library)

Fax number: (012) 310 8664 (technical enquiries)

email: gerdab@statssa.gov.za (technical enquiries)
nicolaic@statssa.gov.za (technical enquiries)
info@statssa.gov.za (user information services)
distribution@statssa.gov.za (orders)

Postal address: Private Bag X44, Pretoria, 0001

Produced by Stats SA