



**stats sa**

Department:  
Statistics South Africa  
**REPUBLIC OF SOUTH AFRICA**

Private Bag X44, Pretoria, 0001, South Africa, ISibalo House, Koch Street, Salvokop, Pretoria, 0002  
www.statssa.gov.za, info@statssa.gov.za, Tel +27 12 310 8911

## **STATISTICAL RELEASE**

### **P4141**

# Electricity generated and available for distribution (Preliminary)

August 2024

Embargoed until:  
3 October 2024  
13:00

ENQUIRIES:  
Nicolai Claassen  
Tel: 072 310 5351

FORTHCOMING ISSUE:  
September 2024

EXPECTED RELEASE DATE:  
7 November 2024

## Contents

<b>Electricity generated (produced) in South Africa: results for August 2024</b> .....	<b>2</b>
Table A – Key growth rates in the volume of electricity generated .....	2
Figure 1 – Electricity generated in South Africa .....	2
<b>Electricity distributed (consumed) in South Africa: results for August 2024</b> .....	<b>3</b>
Table B – Key growth rates in the volume of electricity distributed.....	3
Figure 2 – Electricity distributed in South Africa: year-on-year percentage change .....	3
<b>Tables</b> .....	<b>4</b>
Table 1 – Index of the volume of electricity generated (Base: 2019=100).....	4
Table 2 – Year-on-year percentage change in the volume of electricity generated .....	4
Table 3 – Seasonally adjusted index of the volume of electricity generated .....	4
Table 4 – Volume of electricity distributed in South Africa (gigawatt-hours).....	5
Table 5 – Year-on-year percentage change in electricity distributed in South Africa .....	5
Table 6 – Seasonally adjusted volume of electricity distributed in South Africa .....	5
Table 7 – Volume of electricity by category (gigawatt-hours) .....	6
Table 8 – Year-to-date volume of electricity by category: year-on-year percentage change and difference .....	6
Table 9 – Volume of electricity delivered to provinces (gigawatt-hours).....	6
<b>Explanatory notes</b> .....	<b>7</b>
<b>Technical notes</b> .....	<b>8</b>
<b>Glossary</b> .....	<b>9</b>
<b>Technical enquiries</b> .....	<b>9</b>
<b>General information</b> .....	<b>10</b>

### Electricity generated (produced) in South Africa: results for August 2024

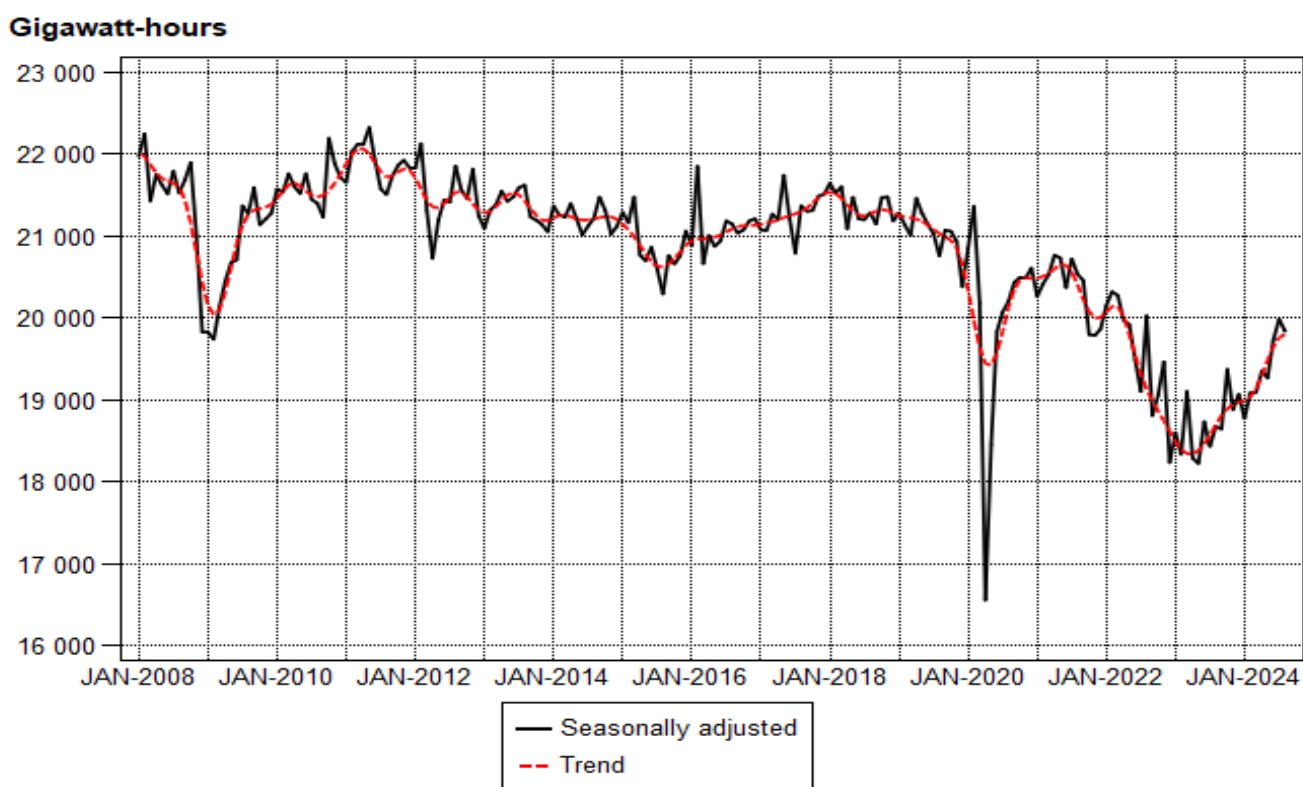
**Table A – Key growth rates in the volume of electricity generated**

	Mar-24	Apr-24	May-24	Jun-24	Jul-24	Aug-24
Year-on-year % change, unadjusted	0,0	5,7	5,5	5,4	8,5	6,3
Month-on-month % change, seasonally adjusted	0,0	1,4	-0,4	2,4	1,3	-0,7
3-month % change, seasonally adjusted <sup>1</sup>	-0,7	1,4	1,4	2,5	2,6	3,2

<sup>1</sup> Percentage change between the previous 3 months and the 3 months ending in the month indicated.

Electricity generation (production) increased by 6,3% year-on-year in August 2024. Seasonally adjusted electricity generation decreased by 0,7% in August 2024 compared with July 2024. This followed month-on-month changes of 1,3% in July 2024 and 2,4% in June 2024. Seasonally adjusted electricity generation increased by 3,2% in the three months ended August 2024 compared with the previous three months.

**Figure 1 – Electricity generated in South Africa**



### Electricity distributed (consumed) in South Africa: results for August 2024

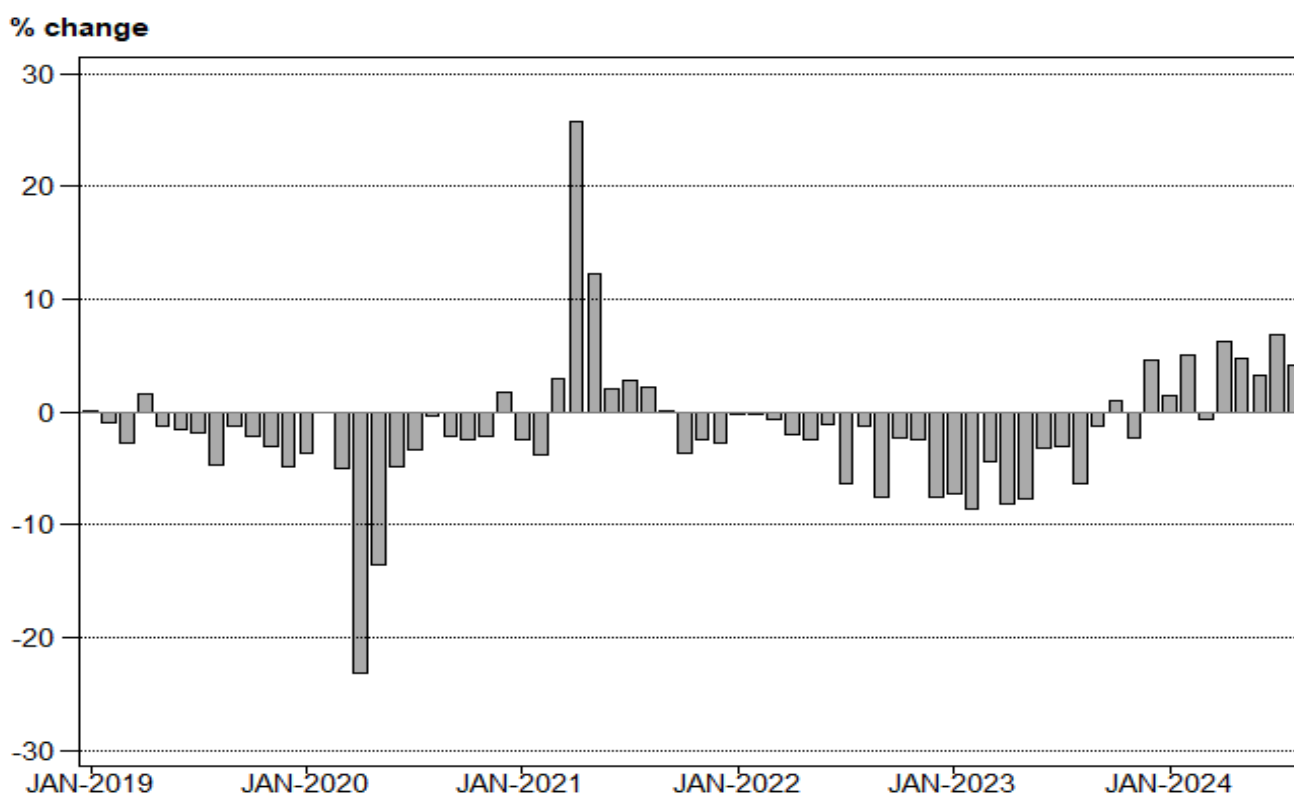
**Table B – Key growth rates in the volume of electricity distributed**

	Mar-24	Apr-24	May-24	Jun-24	Jul-24	Aug-24
Year-on-year % change, unadjusted	-0,7	6,2	4,7	3,3	6,9	4,2
Month-on-month % change, seasonally adjusted	-0,6	1,9	-0,5	0,9	1,6	-1,1
3-month % change, seasonally adjusted <sup>1</sup>	-0,4	0,7	0,5	1,6	1,7	1,9

<sup>1</sup> Percentage change between the previous 3 months and the 3 months ending in the month indicated.

Electricity distribution (consumption) increased by 4,2% year-on-year in August 2024. Seasonally adjusted electricity distribution decreased by 1,1% month-on-month in August 2024, following month-on-month changes of 1,6% in July 2024 and 0,9% in June 2024. Seasonally adjusted electricity distribution increased by 1,9% in the three months ended August 2024 compared with the previous three months.

**Figure 2 – Electricity distributed in South Africa: year-on-year percentage change**



**Risenga Maluleke**  
**Statistician-General**

## Tables

**Table 1 – Index of the volume of electricity generated (Base: 2019=100)**

Month	2018	2019	2020	2021	2022	2023	2024
Jan	101,5	99,5	97,1	93,9	93,0	85,7	86,4
Feb	93,1	91,3	92,2	88,2	87,9	79,4	82,7
Mar	102,5	99,5	95,5	97,2	96,2	90,8	90,8
Apr	96,8	98,5	76,1	95,5	91,9	84,1	88,9
May	105,5	104,9	91,1	102,2	97,9	89,4	94,3
Jun	104,2	104,3	98,3	101,4	97,3	93,7	98,8
Jul	107,9	107,1	102,3	105,7	97,6	94,3	102,3
Aug	104,6	102,1	99,7	101,7	99,5	93,1	99,0
Sep	99,2	98,7	95,7	95,7	87,9	87,0	
Oct	104,5	102,5	99,7	96,2	92,5	94,0	
Nov	100,9	98,2	95,7	92,2	90,5	87,8	
Dec	97,1	93,3	94,3	90,8	83,3	87,0	
<b>Total</b>	<b>101,5</b>	<b>100,0</b>	<b>94,8</b>	<b>96,7</b>	<b>93,0</b>	<b>88,9</b>	

**Table 2 – Year-on-year percentage change in the volume of electricity generated**

Month	2019	2020	2021	2022	2023	2024	2024 year-to-date
Jan	-2,0	-2,4	-3,3	-1,0	-7,8	0,8	0,8
Feb	-1,9	1,0	-4,3	-0,3	-9,7	4,2	2,4
Mar	-2,9	-4,0	1,8	-1,0	-5,6	0,0	1,6
Apr	1,8	-22,7	25,5	-3,8	-8,5	5,7	2,6
May	-0,6	-13,2	12,2	-4,2	-8,7	5,5	3,2
Jun	0,1	-5,8	3,2	-4,0	-3,7	5,4	3,6
Jul	-0,7	-4,5	3,3	-7,7	-3,4	8,5	4,3
Aug	-2,4	-2,4	2,0	-2,2	-6,4	6,3	4,6
Sep	-0,5	-3,0	0,0	-8,2	-1,0		
Oct	-1,9	-2,7	-3,5	-3,8	1,6		
Nov	-2,7	-2,5	-3,7	-1,8	-3,0		
Dec	-3,9	1,1	-3,7	-8,3	4,4		
<b>Total</b>	<b>-1,5</b>	<b>-5,2</b>	<b>2,0</b>	<b>-3,8</b>	<b>-4,4</b>		

**Table 3 – Seasonally adjusted index of the volume of electricity generated**

Month	Base: 2019=100				Month-on-month % change			
	2021	2022	2023	2024	2021	2022	2023	2024
Jan	96,3	95,8	88,4	89,2	-1,6	1,5	2,0	-1,5
Feb	97,0	96,6	87,1	90,7	0,7	0,8	-1,5	1,7
Mar	97,6	96,3	90,8	90,7	0,6	-0,3	4,2	0,0
Apr	98,7	94,9	86,9	92,0	1,1	-1,5	-4,3	1,4
May	98,5	94,7	86,6	91,6	-0,2	-0,2	-0,3	-0,4
Jun	96,8	92,6	89,0	93,8	-1,7	-2,2	2,8	2,4
Jul	98,5	90,8	87,6	95,0	1,8	-1,9	-1,6	1,3
Aug	97,6	95,2	88,8	94,3	-0,9	4,8	1,4	-0,7
Sep	97,2	89,4	88,6		-0,4	-6,1	-0,2	
Oct	94,1	90,6	92,1		-3,2	1,3	4,0	
Nov	94,0	92,5	89,7		-0,1	2,1	-2,6	
Dec	94,4	86,7	90,6		0,4	-6,3	1,0	

**Table 4 – Volume of electricity distributed in South Africa (gigawatt-hours)**

Month	2019	2020	2021	2022	2023	2024
Jan	19 132	18 444	18 002	17 974	16 664	16 920
Feb	17 493	17 491	16 825	16 815	15 362	16 129
Mar	18 930	17 976	18 522	18 408	17 592	17 465
Apr	18 711	14 379	18 078	17 709	16 271	17 275
May	19 943	17 254	19 371	18 897	17 433	18 257
Jun	19 609	18 664	19 049	18 838	18 232	18 839
Jul	20 224	19 533	20 082	18 814	18 239	19 495
Aug	19 105	19 038	19 459	19 220	17 981	18 739
Sep	18 605	18 216	18 230	16 857	16 648	
Oct	19 367	18 883	18 203	17 784	17 970	
Nov	18 539	18 153	17 713	17 281	16 886	
Dec	17 678	17 979	17 496	16 173	16 923	
<b>Total</b>	<b>227 336</b>	<b>216 010</b>	<b>221 030</b>	<b>214 770</b>	<b>206 201</b>	

**Table 5 – Year-on-year percentage change in electricity distributed in South Africa**

Month	2020	2021	2022	2023	2024	2024 year-to-date
Jan	-3,6	-2,4	-0,2	-7,3	1,5	1,5
Feb	0,0	-3,8	-0,1	-8,6	5,0	3,2
Mar	-5,0	3,0	-0,6	-4,4	-0,7	1,8
Apr	-23,2	25,7	-2,0	-8,1	6,2	2,9
May	-13,5	12,3	-2,4	-7,7	4,7	3,3
Jun	-4,8	2,1	-1,1	-3,2	3,3	3,3
Jul	-3,4	2,8	-6,3	-3,1	6,9	3,8
Aug	-0,4	2,2	-1,2	-6,4	4,2	3,9
Sep	-2,1	0,1	-7,5	-1,2		
Oct	-2,5	-3,6	-2,3	1,0		
Nov	-2,1	-2,4	-2,4	-2,3		
Dec	1,7	-2,7	-7,6	4,6		
<b>Total</b>	<b>-5,0</b>	<b>2,3</b>	<b>-2,8</b>	<b>-4,0</b>		

**Table 6 – Seasonally adjusted volume of electricity distributed in South Africa**

Month	Gigawatt-hours				Month-on-month % change			
	2021	2022	2023	2024	2021	2022	2023	2024
Jan	18 440	18 485	17 169	17 442	-1,3	1,6	2,1	-1,0
Feb	18 411	18 382	16 718	17 537	-0,2	-0,6	-2,6	0,5
Mar	18 558	18 419	17 572	17 428	0,8	0,2	5,1	-0,6
Apr	18 614	18 207	16 720	17 759	0,3	-1,2	-4,8	1,9
May	18 610	18 220	16 851	17 670	0,0	0,1	0,8	-0,5
Jun	18 125	17 898	17 296	17 834	-2,6	-1,8	2,6	0,9
Jul	18 705	17 525	16 989	18 120	3,2	-2,1	-1,8	1,6
Aug	18 741	18 456	17 236	17 916	0,2	5,3	1,5	-1,1
Sep	18 574	17 199	17 023		-0,9	-6,8	-1,2	
Oct	17 899	17 522	17 703		-3,6	1,9	4,0	
Nov	18 112	17 712	17 313		1,2	1,1	-2,2	
Dec	18 185	16 813	17 614		0,4	-5,1	1,7	

**Table 7 – Volume of electricity by category (gigawatt-hours)**

	Apr-24	May-24	Jun-24	Jul-24	Aug-24	Aug-24 year-on- year % change
<b>Total - all producers</b>						
Generated	18 717	19 852	20 796	21 524	20 838	6,4
Inflow into South Africa	927	925	900	830	823	-13,7
Consumed in power stations and auxiliary systems	1 495	1 616	1 728	1 748	1 718	5,2
Outflow from South Africa	874	904	1 130	1 111	1 204	29,9
Distributed in South Africa	17 275	18 257	18 839	19 495	18 739	4,2
<b>National electricity supplier</b>						
Generated	16 292	17 437	18 248	18 967	18 108	7,4
Inflow into South Africa	927	925	900	830	823	-13,7
Consumed in power stations and auxiliary systems	1 412	1 518	1 622	1 640	1 614	6,7
Outflow from South Africa	874	904	1 130	1 111	1 204	29,9
Distributed in South Africa	14 933	15 940	16 396	17 046	16 114	4,8

**Table 8 – Year-to-date volume of electricity by category: year-on-year percentage change and difference**

	Jan – Aug 2023 (GWh)	Jan – Aug 2024 (GWh)	% change between Jan – Aug 2023 and Jan – Aug 2024	Difference between Jan – Aug 2023 and Jan – Aug 2024 (GWh)
<b>Total - all producers</b>				
Generated	149 519	156 436	4,6	6 917
Inflow into South Africa	7 272	7 089	-2,5	-183
Consumed in power stations and auxiliary systems	11 768	12 551	6,7	783
Outflow from South Africa	7 246	7 856	8,4	610
Distributed in South Africa	137 774	143 119	3,9	5 345
<b>National electricity supplier</b>				
Generated	129 751	136 108	4,9	6 357
Inflow into South Africa	7 272	7 089	-2,5	-183
Consumed in power stations and auxiliary systems	10 959	11 767	7,4	808
Outflow from South Africa	7 246	7 856	8,4	610
Distributed in South Africa	118 817	123 574	4,0	4 757

**Table 9 – Volume of electricity delivered to provinces (gigawatt-hours)**

Province	Apr-24	May-24	Jun-24	Jul-24	Aug-24	Aug-24 year-on- year % change
Western Cape	1 592	1 677	1 654	1 797	1 748	8,4
Eastern Cape	718	742	751	824	798	3,1
Northern Cape	439	467	476	495	500	-1,2
Free State	878	928	952	996	948	6,0
KwaZulu-Natal	3 152	3 308	3 296	3 387	3 268	-1,2
North West	1 661	1 730	1 808	1 787	1 842	18,9
Gauteng	4 327	4 589	5 120	5 330	4 873	0,8
Mpumalanga	2 496	2 682	2 619	2 698	2 593	3,8
Limpopo	1 728	1 746	1 800	1 722	1 755	1,4
<b>Total</b>	<b>16 991</b>	<b>17 868</b>	<b>18 476</b>	<b>19 035</b>	<b>18 324</b>	<b>3,5</b>

## Explanatory notes

- Introduction** 1 Statistics South Africa (Stats SA) conducts a monthly survey covering enterprises in the electricity industry. This statistical release contains monthly information regarding the volume of electricity units:
- generated and distributed in South Africa;
  - flowing into and out from South Africa as measured by the metering systems at the South African borders; and
  - delivered to provinces.
- Both unadjusted and seasonally adjusted figures are published.
- 2 In accordance with international practice, the indices are usually re-based every five years to a new base year. The current base period of the index is 2019.
- Purpose of the survey** 3 The results of the monthly electricity survey are used to compile estimates of the gross domestic product (GDP) and its components, which are used in monitoring the state of the economy and formulation of economic policy.
- Scope of the survey** 4 This survey covers enterprises conducting activities concerned with the generation and/or distribution of electricity (excluding the distribution of purchased electric energy). It includes electrical power installations, which, as subsidiary divisions of enterprises, produce electricity for regular use by these enterprises.
- Classification** 5 The 1993 edition of the *Standard Industrial Classification of All Economic Activities* (SIC), Fifth Edition, Report No. 09-90-02, was used to classify the statistical units in the survey. The SIC is based on the 1990 *International Standard Industrial Classification of All Economic Activities* (ISIC) with suitable adaptations for local conditions. Each enterprise is classified to an industry which reflects the predominant activity. Statistics in this publication are presented at SIC group (five-digit) level.
- Collection rate** 6 The preliminary collection rate for the survey on electricity generated and available for distribution for August 2024 was 92%. The revised collection rate for July 2024 was 96%.
- Statistical unit** 7 The statistical unit for the collection of information is an enterprise, defined as a legal unit or a combination of legal units that includes and directly controls all functions necessary to carry out its production activities.
- Revised figures** 8 Revised figures are mainly due to late submission of data to Stats SA, or respondents reporting revisions or corrections to their figures. The reasons for routine revisions are outlined in the following schedule. Any unscheduled revisions will be promptly indicated in relevant tables to maintain transparency and accuracy. It is important to note that seasonally adjusted figures are revised monthly.

Statistical release	Reason for revision	Period subject to revision
Aug-24	Additional information from respondents	Jul-24
Sep-24	Additional information from respondents	Aug-24
Oct-24	Additional information from respondents	Sep-24
Nov-24	Additional information from respondents	Oct-24
Dec-24	Additional information from respondents	Nov-24
Jan-25	Additional information from respondents	Dec-24
Feb-25	Additional information from respondents	Jan-25
Mar-25	Additional information from respondents	Feb-25
Apr-25	Additional information from respondents	Mar-25
May-25	Additional information from respondents	Apr-25
Jun-25	Additional information from respondents	May-25
Jul-25	Additional information from respondents	Jun-25
New base year in 2027/28 - periodic, approximately four- to five-year intervals		

- Rounding-off of figures** 9 Where figures have been rounded off, discrepancies may occur between sums of the component items and the totals.



- Historical data** 10 Historical electricity data are available on the Stats SA webpage. Click on the following link ([Time series data](#)) to access the data electronically.
- Past publications** 11 Past electricity releases are available on the Stats SA webpage. Click on the following link ([Past publications](#)) to access the releases electronically.
- Technical notes**
- Survey methodology and design**
- 1 All statistical units are stratified by type of economic activity according to the *Standard Industrial Classification of All Economic Activities* (SIC) and measure of size, where measure of size is the volume of electricity generated by the enterprise. All large enterprises (size group one) are completely enumerated. A sample is drawn from medium and small size enterprises by systematically selecting enterprises within each size category. An enterprise with a total generating capacity of less than 500 kilowatts is excluded from the sample.
- 2 The survey is conducted by email and telephone. Information is collected from a sample of 24 enterprises. As from September 2013, the national electricity supplier provided additional data for independent power producers (IPPs) that were not in the original sample of 24 enterprises.
- Monthly index of electricity generated** 3 The calculation of the monthly index of electricity generated is based on the volume of electricity units produced.
- Benchmarking** 4 The index of the volume of electricity generated should provide an accurate reflection of the trend of activities of the relevant industry. The level of activities, as measured by the monthly electricity survey, is based on information received from a sample of enterprises conducting activities concerned with the generation and/or distribution of electricity (excluding the distribution of purchased electric energy). These levels are weighted according to the original sample and designed to represent the population of enterprises conducting activities concerned with the generation and/or distribution of electricity.
- The results of the 1995 Census of electricity, gas and steam served as a benchmark to verify or adjust the level of the monthly index of the volume of electricity generated collected through the monthly survey. The level adjustments were done on the volume index for July of the relevant census year (the 1995 census year covered the period 1 January to 31 December 1995 and therefore, the benchmarking was done using the index of July 1995 as reference point).
- Seasonal adjustment** 5 Seasonally adjusted estimates are generated each month using the X-12 Seasonal Adjustment Program developed by the United States Census Bureau. Seasonal adjustment is a means of removing the estimated effects of normal seasonal variation from the series so that the effects of other influences on the series can be more clearly recognised. Seasonal adjustment does not aim to remove irregular or non-seasonal influences, which may be present in any particular month. Influences that are volatile or unsystematic can still make it difficult to interpret the movement of the series even after adjustment for seasonal variations. This means the month-to-month movements of seasonally adjusted estimates may not be reliable indicators of trend behaviour. The X12-ARIMA procedure for electricity generated and available for distribution is described in more detail on the Stats SA website: [Click to download Electricity seasonal adjustment February 2022.](#)
- Trend cycle** 6 The trend is the long-term pattern or movement of a time series. The X-12-ARIMA Seasonal Adjustment Program is used for smoothing seasonally adjusted estimates to estimate the underlying trend cycle.
- Month-on-month percentage change** 7 The month-on-month percentage change in a variable for any given month is the change between that month and the previous month, expressed as a percentage of the latter.

**Year-on-year percentage change** 8 The year-on-year percentage change in a variable for any given period is the change between that period and the corresponding period of the previous year, expressed as a percentage of the latter.

## Glossary

**Enterprise** The enterprise is a legal entity or a combination of legal units that includes and directly controls all functions necessary to carry out its production activities.

**Index of the volume of electricity generated** A statistical measure of the change in the volume of electricity generated in a given period and the volume of electricity generated in the base period. The base period is 2019. The production in the base period is set at 100.

**Industry** An industry is made up of enterprises engaged in the same or similar kinds of economic activity. Industries are defined in the System of National Accounts (SNA) in the same way as in the *Standard Industrial Classification of All Economic Activities* (SIC), Fifth Edition, Report No. 09-90-02 of January 1993.

**Inflow into SA** Electricity flowing into South Africa as measured by the metering systems at the South African borders.

**Outflow from SA** Electricity flowing from South Africa as measured by the metering systems at the South African borders.

**Unit of electricity** One gigawatt-hour of electricity is equal to one million kilowatt-hours. A kilowatt-hour is the basic unit of electrical energy equal to one kilowatt of power supplied to or taken from an electric circuit steadily for one hour. One kilowatt-hour equals one thousand watt-hours.

<b>Symbols and abbreviations</b>	GDP	Gross domestic product
	GWh	Gigawatt-hour
	IPPs	Independent Power Producers
	ISIC	International Standard Industrial Classification
	SIC	Standard Industrial Classification of All Economic Activities
	SA	South Africa
	Stats SA	Statistics South Africa
*	Revised figures	

## Technical enquiries

**Tsholofelo Ditinti** Telephone number: (012) 310 6990  
Email: tsholofelod@statssa.gov.za

**Nicolai Claassen** Telephone number: (012) 310 8007 / 072 310 5351  
Email: nicolaic@statssa.gov.za

## General information

Stats SA publishes approximately 300 different statistical releases each year. It is not economically viable to produce them in more than one of South Africa's 12 official languages. Since the releases are used extensively locally and by international economic and social-scientific communities, Stats SA releases are published in English.

Stats SA has copyright on this publication. Users may apply the information as they wish, provided that they acknowledge Stats SA as the source of the basic data wherever they process, apply, utilise, publish or distribute the data; and also that they specify that the relevant application and analysis (where applicable) result from their own processing of the data.

## Advance release calendar

An advance release calendar is disseminated on [www.statssa.gov.za](http://www.statssa.gov.za).

## Stats SA products

A complete set of Stats SA publications is available at the Stats SA Library and the following libraries:

National Library of South Africa, Pretoria Division  
National Library of South Africa, Cape Town Division  
Natal Society Library, Pietermaritzburg  
Library of Parliament, Cape Town  
Bloemfontein Public Library  
Johannesburg Public Library  
Eastern Cape Library Services, Qonce  
Central Regional Library, Polokwane  
Central Reference Library, Mbombela  
Central Reference Collection, Kimberley  
Central Reference Library, Mmabatho

Stats SA also provides a subscription service.

## Electronic services

A large range of data is available via online services. For more details about our electronic data services, contact Stats SA's user information service at (012) 310 8600.

You can visit us on the internet at: [www.statssa.gov.za](http://www.statssa.gov.za).

## General enquiries

User information services	Telephone number: (012) 310 8600 Email address: <a href="mailto:info@statssa.gov.za">info@statssa.gov.za</a>
Orders/subscription services	Telephone number: (012) 310 8619 Email address: <a href="mailto:millies@statssa.gov.za">millies@statssa.gov.za</a>
Postal address	Private Bag X44, Pretoria, 0001

*Produced by Stats SA*