

# Statistical release

## P4141

# Electricity generated and available for distribution (Preliminary)

**August 2013**

**Embargoed until:  
3 October 2013  
13:00**

**Enquiries:**

User Information Services  
Tel: (012) 310 8600

**Forthcoming issue:**

September 2013

**Expected release date:**

30 October 2013

**Contents**

**Results for August 2013** ..... 2

Table A – Selected key figures regarding electricity generated and available for distribution .....2

Table B – Comparison of the seasonally adjusted volume of electricity generated and available for distribution in the three months ended August 2013 and the previous three months .....3

Table C – Comparison of actual estimates between the three months ended August 2013 and the three months ended August 2012 .....3

Figure 1 – Electricity produced and available for distribution in South Africa, seasonally adjusted and trend .....3

**Tables** ..... 4

Table 1 – Total volume of electricity available for distribution in South Africa: 2008–2013 .....4

Table 2 – Annual percentage change in electricity available for distribution in South Africa: 2008–2013.....4

Table 3 – Seasonally adjusted total volume of electricity available for distribution in South Africa: 2008–2013 .....4

Table 4 – Indices of the physical volume of electricity production: 2008–2013.....5

Table 5 – Annual percentage change in indices of the physical volume of electricity production: 2008–2013.....5

Table 6 – Seasonally adjusted indices of the physical volume of electricity production: 2008–2013.....5

Table 7 – Total volume of electricity imported: 2008–2013.....6

Table 8 – Total volume of electricity exported: 2008–2013.....6

Table 9a – Electricity produced and consumed in power stations, purchased and sold outside South Africa and available for distribution in South Africa (monthly figures).....7

Table 9b – Electricity produced and consumed in power stations, purchased and sold outside South Africa and available for distribution in South Africa (cumulative figures) .....7

Table 10 – Total volume of electricity delivered by Eskom to provinces for 2012 and 2013 .....8

**Explanatory notes**..... 9

**Glossary** ..... 11

**Technical enquiries**..... 11

**General information** ..... 12

## Results for August 2013

**Table A – Selected key figures regarding electricity generated and available for distribution**

Actual estimates	August 2013 1/	% change between August 2012 and August 2013	% change between June to August 2012 and June to August 2013	% change between January to August 2012 and January to August 2013
Electricity available for distribution (Gigawatt-hours)	20 689	1,7	1,2	-0,9
Index of the physical volume of electricity production (2010=100)	104,2	-1,1	-0,1	-0,2

1/ Preliminary.

Seasonally adjusted estimates	August 2013	% change between July and August 2013	% change between March to May 2013 and June to August 2013
Electricity available for distribution (Gigawatt-hours)	19 941	0,6	2,3
Index of the physical volume of electricity production (2010=100)	100,3	0,6	0,4

### Consumption of electricity

The actual volume of electricity consumption increased by 1,7% year-on-year in August 2013. Seasonally adjusted electricity consumption increased by 0,6% month-on-month in August 2013, following a month-on-month increase of 1,5% in July 2013. Seasonally adjusted electricity consumption increased by 2,3% in the three months ended August 2013 compared with the previous three months.

### Production of electricity

The actual estimated electricity production decreased by 1,1% year-on-year in August 2013. Seasonally adjusted electricity production increased by 0,6% month-on-month in August 2013, following a month-on-month increase of 0,7% in July 2013. Seasonally adjusted electricity production increased by 0,4% in the three months ended August 2013 compared with the previous three months.

### Electricity delivered by Eskom to the provinces

The total volume of electricity delivered by Eskom to the provinces increased by 1,6% (309 Gigawatt-hours) in August 2013 compared with August 2012. Increases were reported in five of the nine provinces, with the largest volume increase recorded for Mpumalanga (202 Gigawatt-hours), followed by KwaZulu-Natal (140 Gigawatt-hours). Gauteng recorded the largest volume decrease (-125 Gigawatt-hours) over this period.

**Table B – Comparison of the seasonally adjusted volume of electricity generated and available for distribution in the three months ended August 2013 and the previous three months**

Gigawatt-hours	Seasonally adjusted quantity March to May 2013	Seasonally adjusted quantity June to August 2013	% change between March to May 2013 and June to August 2013	Quantity difference between March to May 2013 and June to August 2013
Electricity produced	64 419	64 700	0,4	281
Electricity available for distribution in South Africa	57 999	59 304	2,3	1 305

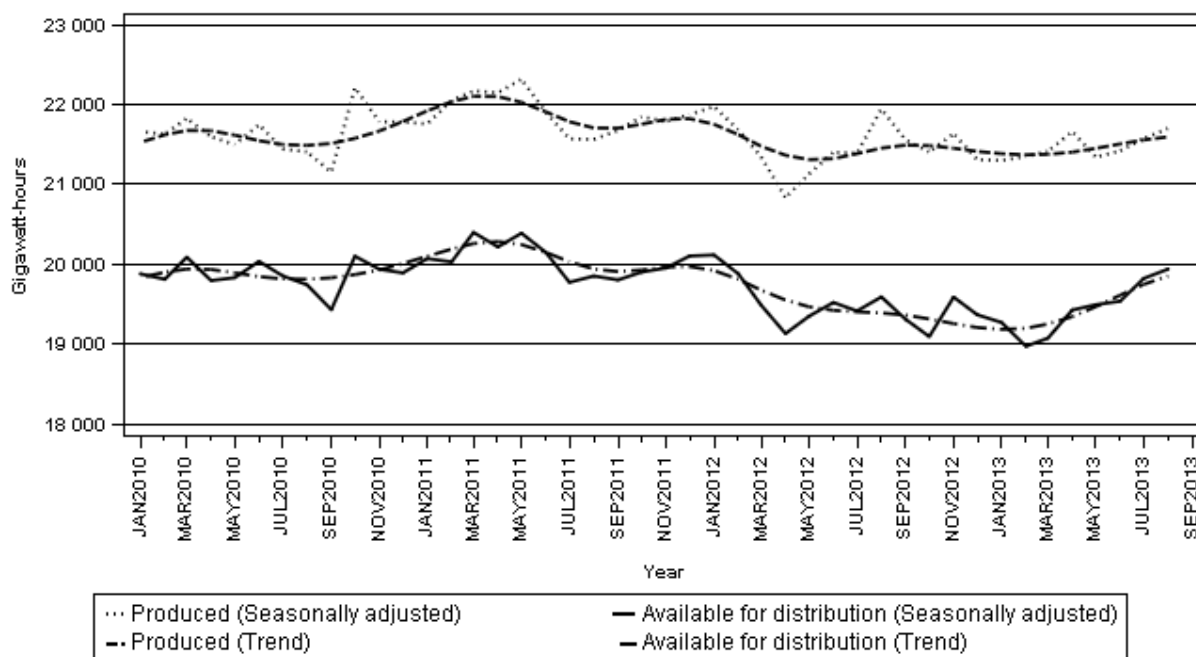
**Table C – Comparison of actual estimates between the three months ended August 2013 and the three months ended August 2012**

Gigawatt-hours	Actual volume June to August 2012	Actual volume June to August 2013	% change between June to August 2012 and June to August 2013	Quantity difference between June to August 2012 and June to August 2013
Electricity produced	67 772	67 673	-0,1	-99
Purchased outside South Africa (import) 1/	2 412	2 776	15,1	364
Consumed in power stations and auxiliary systems	4 843	4 846	0,1	3
Sold outside South Africa (export) 2/	3 980	3 526	-11,4	-454
Electricity available for distribution in South Africa	61 362	62 078	1,2	716

1/ Physical energy flowing into South Africa as measured by the metering systems at the South African borders.

2/ Physical energy flowing out of South Africa as measured by the metering systems at the South African borders.

**Figure 1 – Electricity produced and available for distribution in South Africa, seasonally adjusted and trend**



**PJ Lehohla**  
**Statistician-General**

**Tables**

**Table 1 – Total volume of electricity available for distribution in South Africa: 2008–2013**

Month	Gigawatt-hours					
	2008	2009	2010	2011	2012	2013
January	19 256	17 919	19 396	19 616	19 676	18 860
February	18 668	16 757	18 181	18 455	18 783	17 493
March	19 603	18 694	20 186	20 518	19 623	19 202
April	19 127	17 934	19 102	19 539	18 466	18 762
May	20 365	19 548	20 435	20 938	19 869	19 991
June	20 515	19 819	20 800	20 914	20 274	20 270
July	21 610	21 151	21 307	21 162	20 743	21 119
August	20 736	20 398	20 540	20 617	20 345	1/ 20 689
September	19 725	19 382	19 256	19 619	19 100	
October	20 138	19 899	20 371	20 198	19 413	
November	18 640	19 248	19 702	19 763	19 426	
December	17 541	18 850	18 996	19 189	18 456	
<b>Year</b>	<b>235 924</b>	<b>229 599</b>	<b>238 272</b>	<b>240 528</b>	<b>234 174</b>	

1/ Preliminary.

**Table 2 – Annual percentage change in electricity available for distribution in South Africa: 2008–2013**

Month	Percentage change 2/					
	2008	2009	2010	2011	2012	2013
January	-1,6	-6,9	8,2	1,1	0,3	-4,1
February	2,0	-10,2	8,5	1,5	1,8	-6,9
March	-2,8	-4,6	8,0	1,6	-4,4	-2,1
April	0,8	-6,2	6,5	2,3	-5,5	1,6
May	-2,6	-4,0	4,5	2,5	-5,1	0,6
June	-2,4	-3,4	4,9	0,5	-3,1	0,0
July	-0,8	-2,1	0,7	-0,7	-2,0	1,8
August	-2,9	-1,6	0,7	0,4	-1,3	1,7
September	0,0	-1,7	-0,7	1,9	-2,6	
October	-1,5	-1,2	2,4	-0,8	-3,9	
November	-5,8	3,3	2,4	0,3	-1,7	
December	-8,4	7,5	0,8	1,0	-3,8	
<b>Year</b>	<b>-2,2</b>	<b>-2,7</b>	<b>3,8</b>	<b>0,9</b>	<b>-2,6</b>	

2/ The annual percentage change is the change in the volume of electricity available for distribution of the relevant month of the current year compared with the corresponding month of the previous year expressed as a percentage.

**Table 3 – Seasonally adjusted total volume of electricity available for distribution in South Africa: 2008–2013**

Month	Gigawatt-hours						% change between current and previous month
	2008	2009	2010	2011	2012	2013	
January	19 751	18 403	19 881	20 072	20 118	19 272	-0,5
February	19 917	18 425	19 813	20 031	19 881	18 974	-1,5
March	19 564	18 632	20 090	20 400	19 489	19 076	0,5
April	19 891	18 666	19 797	20 218	19 133	19 428	1,8
May	19 637	18 882	19 833	20 390	19 351	19 495	0,3
June	19 768	19 050	20 037	20 149	19 523	19 539	0,2
July	20 114	19 659	19 856	19 775	19 416	19 824	1,5
August	19 863	19 563	19 744	19 854	19 592	19 941	0,6
September	19 933	19 572	19 432	19 805	19 311		
October	19 869	19 637	20 102	19 904	19 096		
November	18 931	19 506	19 939	19 955	19 590		
December	18 386	19 728	19 893	20 105	19 369		

**Table 4 – Indices of the physical volume of electricity production: 2008–2013**

Month	Base: 2010=100					
	2008	2009	2010	2011	2012	2013
January	99,3	89,7	97,6	98,1	99,2	96,2
February	94,1	83,5	91,1	93,3	93,8	90,5
March	99,6	93,7	101,3	103,0	99,3	99,6
April	96,2	90,7	96,2	98,9	92,9	96,7
May	103,4	98,6	102,3	105,9	100,3	101,2
June	102,6	98,8	103,8	104,6	102,2	102,2
July	108,6	106,4	106,6	106,8	105,7	106,4
August	104,0	102,7	103,2	103,7	105,4	1/ 104,2
September	98,8	98,5	97,0	99,4	98,7	
October	103,2	99,6	104,6	103,1	101,1	
November	95,7	96,8	100,0	100,1	99,5	
December	88,3	94,6	96,3	96,7	94,0	
<b>Year</b>	<b>99,5</b>	<b>96,1</b>	<b>100,0</b>	<b>101,1</b>	<b>99,3</b>	

1/ Preliminary.

**Table 5 – Annual percentage change in indices of the physical volume of electricity production: 2008–2013**

Month	Percentage change 2/					
	2008	2009	2010	2011	2012	2013
January	1,2	-9,7	8,8	0,5	1,1	-3,0
February	2,6	-11,3	9,1	2,4	0,5	-3,5
March	-2,1	-5,9	8,1	1,7	-3,6	0,3
April	1,1	-5,7	6,1	2,8	-6,1	4,1
May	-2,1	-4,6	3,8	3,5	-5,3	0,9
June	-3,3	-3,7	5,1	0,8	-2,3	0,0
July	-1,3	-2,0	0,2	0,2	-1,0	0,7
August	-3,3	-1,3	0,5	0,5	1,6	-1,1
September	-0,7	-0,3	-1,5	2,5	-0,7	
October	0,2	-3,5	5,0	-1,4	-1,9	
November	-5,1	1,1	3,3	0,1	-0,6	
December	-10,5	7,1	1,8	0,4	-2,8	
<b>Year</b>	<b>-2,0</b>	<b>-3,4</b>	<b>4,1</b>	<b>1,1</b>	<b>-1,8</b>	

2/ The annual percentage change is the change in the index of the physical volume of electricity production of the relevant month of the current year compared with the corresponding month of the previous year expressed as a percentage.

**Table 6 – Seasonally adjusted indices of the physical volume of electricity production: 2008–2013**

Month	Base: 2010=100						% change between current and previous month
	2008	2009	2010	2011	2012	2013	
January	101,8	92,1	100,1	100,5	101,5	98,4	-0,1
February	101,1	92,4	99,9	101,9	100,2	98,6	0,2
March	99,4	93,4	100,8	102,4	98,6	98,9	0,3
April	100,2	94,5	99,8	102,3	96,3	100,1	1,2
May	99,9	95,3	99,3	103,1	97,6	98,6	-1,5
June	99,3	95,5	100,5	101,2	98,9	99,0	0,4
July	100,8	98,7	99,1	99,7	98,8	99,7	0,7
August	99,3	98,1	98,9	99,6	101,4	100,3	0,6
September	99,8	99,3	97,7	100,1	99,6		
October	101,3	97,7	102,6	100,9	98,9		
November	96,8	97,6	100,6	100,6	100,0		
December	92,3	98,8	100,6	101,1	98,5		

**Table 7 – Total volume of electricity imported: 2008–2013 1/**

Month	Gigawatt-hours					
	2008	2009	2010	2011	2012	2013
January	638	1 102	1 122	1 088	1 085	676
February	885	999	995	730	1 063	407
March	802	1 064	1 040	1 112	945	455
April	844	906	931	912	1 068	559
May	761	937	1 074	907	1 066	919
June	1 002	1 088	1 019	1 009	1 044	881
July	1 089	1 040	1 117	979	903	965
August	1 076	1 072	1 109	1 108	465	2/ 930
September	1 044	920	1 068	974	474	
October	645	1 115	770	911	451	
November	711	940	1 018	1 073	654	
December	1 075	1 112	930	1 087	788	
<b>Year</b>	<b>10 572</b>	<b>12 295</b>	<b>12 193</b>	<b>11 890</b>	<b>10 006</b>	

1/ Physical energy flowing into South Africa as measured by the metering systems at the South African borders.

2/ Preliminary.

**Table 8 – Total volume of electricity exported: 2008–2013 1/**

Month	Gigawatt-hours					
	2008	2009	2010	2011	2012	2013
January	1 280	1 096	1 217	1 133	1 247	1 115
February	1 101	979	1 128	1 069	1 212	1 095
March	1 136	1 100	1 252	1 279	1 242	1 187
April	998	1 086	1 170	1 190	1 174	1 132
May	1 120	1 109	1 177	1 241	1 322	1 196
June	1 162	1 175	1 132	1 174	1 335	1 158
July	1 249	1 223	1 206	1 247	1 350	1 183
August	1 220	1 235	1 275	1 298	1 295	2/ 1 185
September	1 203	1 285	1 248	1 288	1 165	
October	1 258	1 288	1 338	1 378	1 300	
November	1 252	1 213	1 316	1 381	1 233	
December	1 189	1 263	1 209	1 286	1 160	
<b>Year</b>	<b>14 168</b>	<b>14 052</b>	<b>14 668</b>	<b>14 964</b>	<b>15 035</b>	

1/ Physical energy flowing out of South Africa as measured by the metering systems at the South African borders.

2/ Preliminary.

**Table 9a – Electricity produced and consumed in power stations, purchased and sold outside South Africa and available for distribution in South Africa (monthly figures)**

		Gigawatt-hours				
		August 2012	July 2013	August 2013 1/	% change between August 2012 and August 2013	Difference between August 2012 and August 2013
<b>Total - All producers</b>	Electricity produced	22 802	23 015	22 548	-1,1	-254
	Purchased outside South Africa (import) 2/	465	965	930	100,0	465
	Consumed in power stations and auxiliary systems	1 628	1 679	1 604	-1,5	-24
	Sold outside South Africa (export) 3/	1 295	1 183	1 185	-8,5	-110
	Electricity available for distribution in South Africa	<b>20 345</b>	<b>21 119</b>	<b>20 689</b>	<b>1,7</b>	<b>344</b>
<b>ESKOM</b>	Electricity produced	21 886	21 960	21 462	-1,9	-424
	Purchased outside South Africa (import) 2/	465	965	930	100,0	465
	Consumed in power stations and auxiliary systems	1 557	1 609	1 523	-2,2	-34
	Sold outside South Africa (export) 3/	1 295	1 183	1 185	-8,5	-110
	Electricity available for distribution in South Africa	<b>19 500</b>	<b>20 134</b>	<b>19 683</b>	<b>0,9</b>	<b>183</b>

1/ Preliminary.

2/ Physical energy flowing into South Africa as measured by the metering systems at the South African borders.

3/ Physical energy flowing out of South Africa as measured by the metering systems at the South African borders.

**Table 9b – Electricity produced and consumed in power stations, purchased and sold outside South Africa and available for distribution in South Africa (cumulative figures)**

		Gigawatt-hours			
		January to August 2012	January to August 2013 1/	% change between January to August 2012 and January to August 2013	Difference between January to August 2012 and January to August 2013
<b>Total - All producers</b>	Electricity produced	172 810	172 432	-0,2	-378
	Purchased outside South Africa (import) 2/	7 639	5 792	-24,2	-1 847
	Consumed in power stations and auxiliary systems	12 492	12 590	0,8	98
	Sold outside South Africa (export) 3/	10 177	9 251	-9,1	-926
	Electricity available for distribution in South Africa	<b>157 779</b>	<b>156 386</b>	<b>-0,9</b>	<b>-1 393</b>
<b>ESKOM</b>	Electricity produced	165 769	164 897	-0,5	-872
	Purchased outside South Africa (import) 2/	7 639	5 792	-24,2	-1 847
	Consumed in power stations and auxiliary systems	11 900	12 060	1,3	160
	Sold outside South Africa (export) 3/	10 177	9 251	-9,1	-926
	Electricity available for distribution in South Africa	<b>151 333</b>	<b>149 380</b>	<b>-1,3</b>	<b>-1 953</b>

1/ Preliminary.

2/ Physical energy flowing into South Africa as measured by the metering systems at the South African borders.

3/ Physical energy flowing out of South Africa as measured by the metering systems at the South African borders.



**Table 10 – Total volume of electricity delivered by Eskom to provinces for 2012 and 2013 1/**

Period		Gigawatt-hours									Total South Africa
		Western Cape	Eastern Cape	Northern Cape	Free State	KwaZulu-Natal	North West	Gauteng	Mpumalanga	Limpopo	
<b>2012</b>	January	1 889	844	464	706	3 527	2 237	4 631	2 910	1 038	<b>18 246</b>
	February	1 922	816	403	668	3 271	2 034	4 509	2 779	988	<b>17 390</b>
	March	2 027	859	436	688	3 282	2 161	4 849	2 900	1 000	<b>18 202</b>
	April	1 846	763	391	655	3 154	1 993	4 624	2 800	937	<b>17 163</b>
	May	1 943	839	401	709	3 318	2 181	5 159	2 884	991	<b>18 425</b>
	June	1 933	802	406	775	3 315	2 205	5 643	2 816	974	<b>18 869</b>
	July	1 978	837	432	793	3 441	2 273	5 731	2 922	952	<b>19 359</b>
	August	1 993	838	420	776	3 436	2 186	5 540	2 767	937	<b>18 893</b>
	September	1 852	788	414	664	3 316	2 097	4 981	2 678	950	<b>17 740</b>
	October	1 885	795	418	703	3 458	2 085	4 856	2 884	988	<b>18 072</b>
	November	1 840	784	451	717	3 422	2 170	4 701	2 944	975	<b>18 004</b>
	December	1 867	751	433	633	3 355	2 039	4 213	2 805	959	<b>17 055</b>
	<b>Year</b>	<b>22 975</b>	<b>9 716</b>	<b>5 069</b>	<b>8 487</b>	<b>40 295</b>	<b>25 661</b>	<b>59 437</b>	<b>34 089</b>	<b>11 689</b>	<b>217 418</b>
<b>Year to date</b>	<b>15 531</b>	<b>6 598</b>	<b>3 353</b>	<b>5 770</b>	<b>26 744</b>	<b>17 270</b>	<b>40 686</b>	<b>22 778</b>	<b>7 817</b>	<b>146 547</b>	
<b>2013</b>	January	1 932	796	490	667	3 409	2 022	4 432	2 911	910	<b>17 569</b>
	February	1 825	751	441	618	3 137	1 900	4 216	2 517	811	<b>16 216</b>
	March	1 956	839	476	630	3 454	1 973	4 655	2 781	930	<b>17 694</b>
	April	1 833	802	415	615	3 352	2 000	4 749	2 657	901	<b>17 324</b>
	May	1 941	869	441	644	3 455	2 088	5 346	2 871	913	<b>18 568</b>
	June	1 902	857	440	689	3 428	2 149	5 344	2 975	994	<b>18 778</b>
	July	1 963	909	461	734	3 636	2 212	5 638	2 973	1 062	<b>19 588</b>
	August 2/	1 970	869	456	702	3 576	2 185	5 415	2 969	1 060	<b>19 202</b>
	<b>Year to date</b>	<b>15 322</b>	<b>6 692</b>	<b>3 620</b>	<b>5 299</b>	<b>27 447</b>	<b>16 529</b>	<b>39 795</b>	<b>22 654</b>	<b>7 581</b>	<b>144 939</b>

1/ Wholesale energy (Gigawatt-hours) as delivered by Eskom to the various provinces.

2/ Preliminary.

## Explanatory notes

<b>Introduction</b>	1	Statistics South Africa (Stats SA) conducts a monthly sample survey of the electricity industry covering electricity undertakings and establishments (branches). This statistical release contains information regarding the volume of electricity units generated and available for distribution in South Africa, the volume of units purchased and sold outside South Africa and the volume of units distributed by Eskom by province on a monthly basis. Both actual and seasonally adjusted figures are published.
	2	This statistical release reflects indices of the physical volume of electricity production on the basis of 2010=100. In accordance with international practice, the indices have to be rebased every five years to a new base year.
	3	In order to improve timeliness of the publication, some information for the current month may have been estimated due to late submission by respondents. These estimates will be revised in the next statistical release(s) as soon as actual information is available.
<b>Purpose of the survey</b>	4	The results of the monthly electricity generated and available for distribution survey are used to compile estimates of the gross domestic product (GDP) and its components, which are used in monitoring the state of the economy and formulation of economic policy.
<b>Scope of the survey</b>	5	This survey covers electricity undertakings and establishments conducting activities concerned with the generation or transmission and distribution of electricity. It includes electrical power installations, which, as subsidiary divisions of undertakings, produce electricity for regular use by these undertakings.
<b>Classification</b>	6	The 1993 edition of the <i>Standard Industrial Classification of all Economic Activities (SIC)</i> , Fifth Edition, Report No. 09-90-02, was used to classify the statistical units in the survey. The SIC is based on the 1990 <i>International Standard Industrial Classification of all Economic Activities (ISIC)</i> with suitable adaptations for local conditions. Each statistical unit is classified to an industry, which reflects the predominant activity of the electricity undertaking or establishment.
<b>Collection rate</b>	7	The collection rate for the survey on electricity generated and available for distribution for August 2013 was 96%. The improved collection rate for July 2013 was 100%.
<b>Statistical unit</b>	8	The basic statistical unit for the collection of information is the electricity undertaking or establishment. The electricity undertaking or establishment is the smallest economic unit that functions as a separate entity. Each statistical unit is classified to an industry (see paragraph 5).
<b>Survey methodology and design</b>	9	All statistical units are stratified by type of economic activity according to the <i>Standard Industrial Classification of all Economic Activities (SIC)</i> and measure of size, where measure of size is the volume of electricity generated by the electricity undertaking or establishment. All large undertakings or establishments (size category one cases) are completely enumerated. A sample is drawn from medium and small size undertakings and establishments by systematically selecting undertakings or establishments within each size category. An electricity undertaking or establishment with a total generating capacity of less than 500 kilowatt is excluded from the sample.
	10	The survey is conducted by mail, email and telephone. Information is collected from a sample of 25 electricity undertakings or establishments.
<b>Monthly production indices</b>	11	The calculation of the monthly production indices is based on the volume of electricity units produced.

<b>Benchmarking</b>	<b>12</b>	The index of physical volume of electricity production should provide an accurate reflection of the trend of activities of the relevant industry. The level of activities, as measured by the monthly electricity generated and available for distribution survey, is based on information received from a sample of electricity undertakings and establishments. These levels are weighted according to the original sample and designed to represent the population of electricity undertakings and establishments. It is necessary to adjust the level of activities as measured by the monthly sample survey to the level of activities as measured periodically by the Census of electricity, gas and steam. This procedure, whereby the latest results of an economic census are used to compile more accurate level estimates for a certain year, is known as benchmarking.
	<b>13</b>	The results of the 1995 Census of electricity, gas and steam served as a benchmark to verify or adjust the level of the monthly physical volume of electricity production indices collected through the monthly sample survey. The level adjustments were done on the volume indices for August of the relevant census year (the 1995 census year covered the period 1 January 1995 to 31 December 1995 and therefore, the benchmarking was done using the index of August 1995 as reference point).
<b>Seasonal adjustment</b>	<b>14</b>	Seasonally adjusted estimates of all items are generated each month, using the X-12-ARIMA Seasonal Adjustment Program developed by US Bureau of the Census Economic Research and Analyses Division, 1968. Seasonal adjustment is a means of removing the estimated effects of normal seasonal variation from a time series so that the effects of other influences on the series can be more clearly recognised. Seasonal adjustment does not aim to remove irregular or non-seasonal influences, which may be present in any particular month. Influences that are volatile or unsystematic can still make it difficult to interpret the movement of the series even after adjustment for seasonal variations. This means the month-to-month movements of seasonally adjusted estimates may not be reliable indicators of trend behaviour. The X12-ARIMA procedure for electricity generated and available for distribution is described in more detail on the Stats SA website at <a href="http://www.statssa.gov.za/publications/P4141/electricity_seasonal_adjustment_note_2012.pdf">http://www.statssa.gov.za/publications/P4141/electricity_seasonal_adjustment_note_2012.pdf</a>
<b>Trend cycle</b>	<b>15</b>	The trend is the long-term pattern or movement of a time series. The X-12-ARIMA Seasonal Adjustment Program is used for smoothing seasonally adjusted estimates.
<b>Related publications</b>	<b>16</b>	Users may also wish to refer to the following publications which are available from Stats SA : <ul style="list-style-type: none"> <li>• <i>Bulletin of Statistics</i>;</li> <li>• <i>SA Statistics</i>; and</li> <li>• <i>Stats in Brief</i>.</li> </ul>
<b>Rounding-off of figures</b>	<b>17</b>	Where necessary, the figures in the tables have been rounded off to the nearest digit shown. There may therefore be slight discrepancies between the sums of the constituent items and the totals shown.

## Glossary

**Consumption of electricity** For purposes of this release the term 'consumption of electricity' is used interchangeably with the term 'electricity available for distribution'.

**Electricity undertaking** An electricity undertaking is an undertaking concerned with the generation or transmission and distribution of electricity, including electrical power installations, which, as subsidiary divisions of undertakings, produce electricity for regular use by these undertakings.

**Index of physical volume of electricity production** A statistical measure of the change in the volume of production of electricity in a given period and the volume of production of electricity in the base period. The base period is 2010. The production in the base period is set at 100.

**Industry** An industry consists of a group of undertakings or establishments engaged in the same or similar kinds of economic activity. Industries are defined in the 1993 *System of National Accounts (1993 SNA)* in the same way as in the *Standard Industrial Classification of all Economic Activities (SIC)*, Fifth Edition, Report No. 09-90-02.

**Unit of electricity** One gigawatt-hour of electricity is equal to one million kilowatt-hours. A kilowatt-hour is the basic unit of electrical energy equal to one kilowatt of power supplied to or taken from an electric circuit steadily for one hour. One kilowatt-hour equals one thousand watt-hours.

**Symbols and abbreviations**

GDP	Gross domestic product
ISIC	International Standard Industrial Classification
SIC	Standard Industrial Classification of all Economic Activities
Stats SA	Statistics South Africa
*	Revised figures

## Technical enquiries

**Suzzie Mnguni** Telephone number: (012) 310 8443  
Email: [suzziemn@statssa.gov.za](mailto:suzziemn@statssa.gov.za)

**Nicolai Claassen** Telephone number: (012) 336 0142  
Email: [nicolaic@statssa.gov.za](mailto:nicolaic@statssa.gov.za)

## General information

Stats SA publishes approximately 300 different statistical releases each year. It is not economically viable to produce them in more than one of South Africa's eleven official languages. Since the releases are used extensively, not only locally but also by international economic and social-scientific communities, Stats SA releases are published in English only.

Stats SA has copyright on this publication. Users may apply the information as they wish, provided that they acknowledge Stats SA as the source of the basic data wherever they process, apply, utilise, publish or distribute the data: and also that they specify that the relevant application and analysis (where applicable) result from their own processing of the data.

### Advanced release calendar

An advanced release calendar is disseminated on [www.statssa.gov.za](http://www.statssa.gov.za)

### Stats SA products

A complete set of Stats SA publications is available at the Stats SA Library and the following libraries:

National Library of South Africa, Pretoria Division  
National Library of South Africa, Cape Town Division  
Natal Society Library, Pietermaritzburg  
Library of Parliament, Cape Town  
Bloemfontein Public Library  
Johannesburg Public Library  
Eastern Cape Library Services, King William's Town  
Central Regional Library, Polokwane  
Central Reference Library, Nelspruit  
Central Reference Collection, Kimberley  
Central Reference Library, Mmabatho

Stats SA also provides a subscription service.

### Electronic services

A large range of data is available via online services. For more detail about our electronic services, contact Stats SA's user information service at (012) 310 8600.

You can visit us on the Internet at: [www.statssa.gov.za](http://www.statssa.gov.za)

### General enquiries

**User information services** Telephone number: (012) 310 8600  
Email: [info@statssa.gov.za](mailto:info@statssa.gov.za)

**Orders/subscription services** Telephone number: (012) 310 8358  
Email: [magdaj@statssa.gov.za](mailto:magdaj@statssa.gov.za)

**Postal address:** Private Bag X44, Pretoria, 0001

*Produced by Stats SA*