

Statistical release

P4141

Electricity generated and available for distribution (Preliminary)

April 2010

Embargoed until:
3 June 2010
13:00

Enquiries:

User information services
Tel: (012) 310 8600/ 8390/ 8351

Forthcoming issue:

May 2010

Expected release date:

1 July 2010

Contents

Page

SUMMARY OF FINDINGS: ELECTRICITY GENERATED AND AVAILABLE FOR DISTRIBUTION

(APRIL 2010).....2

Key figures2

Table A – Selected key figures regarding electricity generated and available for distribution for April 2010.....2

Key findings2

Consumption of electricity2

Production of electricity2

International trade in electricity.....3

Table B – Comparison of the seasonally adjusted volume of electricity generated and available for distribution between the three months ended April 2010 and the previous three months3

Table C – Comparison of actual estimates between the three months ended April 2010 and the three months ended April 2009.....3

Figure 1 – Electricity produced and available for distribution in South Africa from 2007 to 2010.....4

Table 1 – Total volume of electricity available for distribution in South Africa: 2005 – 2010.....5

Table 2 – Annual percentage change in electricity available for distribution in South Africa: 2005 – 2010.....5

Table 3 – Seasonally adjusted total volume of electricity available for distribution in South Africa: 2005 – 2010.....5

Table 4 – Indices of the physical volume of electricity production: 2005 – 2010.....6

Table 5 – Annual percentage change in indices of the physical volume of electricity production: 2005 – 2010.....6

Table 6 – Seasonally adjusted indices of the physical volume of electricity production: 2005 – 2010.....6

Table 7 – Total volume of electricity imported: 2005 – 2010.....7

Table 8 – Total volume of electricity exported: 2005 – 2010.....7

Table 9a – Electricity produced and consumed in power stations, purchased and sold outside South Africa and available for distribution in South Africa (monthly figures)8

Table 9b – Electricity produced and consumed in power stations, purchased and sold outside South Africa and available for distribution in South Africa (cumulative figures).....8

Table 10 – Total volume of electricity delivered by Eskom to provinces for 2009 and 20109

Explanatory Notes.....10

Glossary.....12

General information13

**SUMMARY OF FINDINGS: ELECTRICITY GENERATED AND AVAILABLE FOR DISTRIBUTION
(APRIL 2010)**

Key figures

Table A – Selected key figures regarding electricity generated and available for distribution for April 2010

Actual estimates	April 2010 1/	% change between April 2009 and April 2010	% change between February to April 2009 and February to April 2010	% change between January to April 2009 and January to April 2010
Electricity available for distribution (Gigawatt-hours)	19 117	6,6	7,7	7,8
Index of the physical volume of electricity production (2005=100)	102,0	6,1	7,7	8,0

1/ Preliminary.

Seasonally adjusted estimates	April 2010	% change between March and April 2010	% change between November 2009 to January 2010 and February to April 2010
Electricity available for distribution (Gigawatt-hours)	20 209	0,2	2,0
Index of the physical volume of electricity production (2005=100)	107,7	0,4	2,1

Key findings

Consumption of electricity

The actual estimated volume of electricity consumed in April 2010 increased by 6,6% (1 183 Gigawatt-hours) compared with April 2009 (see Tables A, 2 and 9a). Electricity consumption for the three months ended April 2010 increased by 7,7% (4 099 Gigawatt-hours) compared with the three months ended April 2009 (see Tables A and C). Electricity consumption, after seasonal adjustment, for the three months ended April 2010 increased by 2,0% compared with the three months ended January 2010 (see Tables A and B).

Production of electricity

The actual estimated production of electricity in April 2010 increased by 6,1% (1 199 Gigawatt-hours) compared with April 2009 (see Tables A, 5 and 9a). The estimated production of electricity for the three months ended April 2010 increased by 7,7% (4 489 Gigawatt-hours) compared with the three months ended April 2009 (see Tables A and C). Electricity production, after seasonal adjustment, for the three months ended April 2010 increased by 2,1% compared with the three months ended January 2010 (see Tables A and B).

Electricity delivered by Eskom to the provinces

Electricity delivered to the provinces for the first four months of 2010 increased by 9,4% (6 202 Gigawatt-hours) compared with the first four months of 2009. Increases were reported for all the nine provinces ranging from 1,6% for Northern Cape to 20,4% for Mpumalanga.

International trade in electricity

The volume of electricity purchased from outside South African borders increased from 4 071 Gigawatt-hours in the first four months of 2009 to 4 088 Gigawatt-hours in the first four months of 2010, representing an increase of 0,4% (17 Gigawatt-hours). The volume of electricity sold to neighbouring countries in the first four months of 2010 increased by 11,7% (500 Gigawatt-hours) compared with the first four months of 2009 (see Table 9b).

Table B – Comparison of the seasonally adjusted volume of electricity generated and available for distribution between the three months ended April 2010 and the previous three months

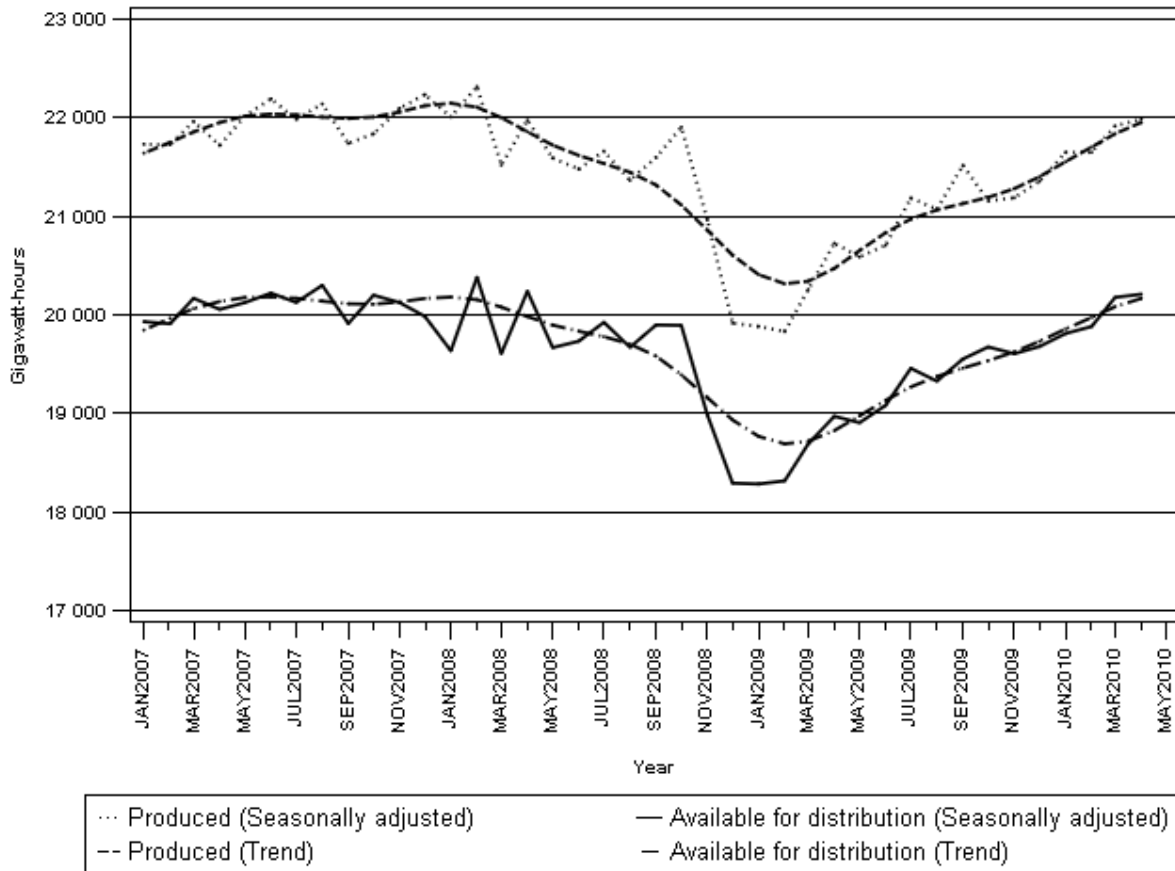
Gigawatt-hours	Seasonally adjusted quantity November 2009 to January 2010	Seasonally adjusted quantity February to April 2010	% change between November 2009 to January 2010 and February to April 2010	Quantity difference between November 2009 to January 2010 and February to April 2010
Electricity produced	64 192	65 549	2,1	1 357
Electricity available for distribution in South Africa	59 093	60 267	2,0	1 174

Table C – Comparison of actual estimates between the three months ended April 2010 and the three months ended April 2009

Gigawatt-hours	Actual volume February to April 2009	Actual volume February to April 2010	% change between February to April 2009 and February to April 2010	Quantity difference between February to April 2009 and February to April 2010
Electricity produced	57 953	62 442	7,7	4 489
Purchased outside South Africa (import)	2 969	2 966	-0,1	-3
Consumed in power stations and auxiliary systems	4 373	4 380	0,2	7
Sold outside South Africa (export)	3 165	3 544	12,0	379
Electricity available for distribution in South Africa	53 385	57 484	7,7	4 099

Figure 1 below shows the seasonally adjusted and trend patterns for electricity produced and available for distribution in South Africa from January 2007 to April 2010.

Figure 1 – Electricity produced and available for distribution in South Africa from 2007 to 2010



P J Lehohla
Statistician-General

Detailed results: Tables

Table 1 – Total volume of electricity available for distribution in South Africa: 2005 – 2010

Month	Gigawatt-hours					
	2005	2006	2007	2008	2009	2010
January	18 149	18 603	19 561	19 256	17 919	19 396
February	17 169	17 396	18 301	18 668	16 757	18 181
March	18 487	18 982	20 160	19 603	18 694	20 186
April	18 132	18 122	18 982	19 127	17 934	1/ 19 117
May	19 224	20 312	20 901	20 365	19 548	
June	18 983	20 166	21 020	20 515	19 819	
July	19 657	20 632	21 780	21 610	21 151	
August	19 191	20 307	21 353	20 736	20 398	
September	18 383	18 987	19 732	19 725	19 382	
October	19 127	19 663	20 435	20 138	19 899	
November	18 523	19 244	19 785	18 640	19 248	
December	18 230	18 909	19 160	17 541	18 850	
Year	223 255	231 323	241 170	235 924	229 599	

1/ Preliminary.

Table 2 – Annual percentage change in electricity available for distribution in South Africa: 2005 – 2010

Month	Percentage					
	2005	2006	2007	2008	2009	2010
January	1,7	2,5	5,1	-1,6	-6,9	8,2
February	-0,6	1,3	5,2	2,0	-10,2	8,5
March	0,1	2,7	6,2	-2,8	-4,6	8,0
April	3,5	-0,1	4,7	0,8	-6,2	6,6
May	1,7	5,7	2,9	-2,6	-4,0	
June	-1,8	6,2	4,2	-2,4	-3,4	
July	-2,5	5,0	5,6	-0,8	-2,1	
August	-0,4	5,8	5,2	-2,9	-1,6	
September	0,1	3,3	3,9	-0,0	-1,7	
October	2,2	2,8	3,9	-1,5	-1,2	
November	1,1	3,9	2,8	-5,8	3,3	
December	2,7	3,7	1,3	-8,4	7,5	
Year	0,6	3,6	4,3	-2,2	-2,7	

2/ The annual percentage change is the change in the volume of electricity available for distribution of the relevant month of the current year compared with the corresponding month of the previous year expressed as a percentage.

Table 3 – Seasonally adjusted total volume of electricity available for distribution in South Africa: 2005 – 2010

Month	Gigawatt-hours						% change between current and previous month
	2005	2006	2007	2008	2009	2010	
January	18 494	18 943	19 930	19 635	18 283	19 810	0,7
February	18 639	18 898	19 909	20 381	18 315	19 881	0,4
March	18 465	18 960	20 168	19 607	18 690	20 177	1,5
April	19 085	19 120	20 055	20 239	18 970	20 209	0,2
May	18 467	19 542	20 124	19 667	18 905		
June	18 258	19 416	20 220	19 732	19 081		
July	18 276	19 154	20 126	19 924	19 457		
August	18 349	19 367	20 299	19 670	19 327		
September	18 605	19 187	19 911	19 897	19 552		
October	18 887	19 425	20 199	19 893	19 674		
November	18 815	19 558	20 124	18 984	19 605		
December	18 995	19 690	19 984	18 291	19 678		

Table 4 – Indices of the physical volume of electricity production: 2005 – 2010

Month	Base : 2005=100					
	2005	2006	2007	2008	2009	2010
January	97,6	99,8	103,9	105,3	95,0	103,4
February	91,7	94,0	97,2	99,7	88,5	96,5
March	100,2	103,3	107,8	105,6	99,3	107,4
April	98,1	98,0	100,9	102,0	96,1	1/ 102,0
May	102,9	108,1	111,9	109,6	104,5	
June	101,6	107,3	112,5	108,8	104,8	
July	105,5	110,8	116,6	115,1	112,8	
August	103,0	109,1	114,1	110,3	108,8	
September	99,1	101,8	105,5	104,8	104,4	
October	102,5	107,2	109,1	109,4	105,6	
November	99,4	103,3	106,9	101,4	102,6	
December	98,2	100,9	104,6	93,6	100,3	
Year	100,0	103,6	107,6	105,5	101,9	

1/ Preliminary.

Table 5 – Annual percentage change in indices of the physical volume of electricity production: 2005 – 2010

Month	Percentage change					
	2005	2006	2007	2008	2008	2010
January	2,2	2,3	4,1	1,3	-9,8	8,8
February	-0,5	2,5	3,4	2,6	-11,2	9,0
March	1,5	3,1	4,4	-2,0	-6,0	8,2
April	3,6	-0,1	3,0	1,1	-5,8	6,1
May	0,5	5,1	3,5	-2,1	-4,7	
June	-3,2	5,6	4,8	-3,3	-3,7	
July	-3,7	5,0	5,2	-1,3	-2,0	
August	-1,2	5,9	4,6	-3,3	-1,4	
September	-0,4	2,7	3,6	-0,7	-0,4	
October	0,4	4,6	1,8	0,3	-3,5	
November	0,9	3,9	3,5	-5,1	1,2	
December	2,3	2,7	3,7	-10,5	7,2	
Year	0,1	3,7	3,8	-2,0	-3,4	

2/ The annual percentage change is the change in the index of the physical volume of electricity production of the relevant month of the current year compared with the corresponding month of the previous year expressed as a percentage.

Table 6 – Seasonally adjusted indices of the physical volume of electricity production: 2005 – 2010

Month	Base : 2005=100						% change between current and previous month
	2005	2006	2007	2008	2009	2010	
January	100,1	102,2	106,4	107,8	97,4	106,0	1,3
February	100,3	102,7	106,4	109,3	97,1	106,0	0,0
March	100,1	103,0	107,6	105,4	99,2	107,3	1,2
April	103,0	103,0	106,4	107,6	101,5	107,7	0,4
May	99,0	104,1	107,8	105,7	100,8		
June	97,9	103,6	108,7	105,2	101,4		
July	97,8	102,7	107,7	106,1	103,7		
August	98,2	104,0	108,4	104,6	103,2		
September	100,1	102,8	106,5	105,8	105,4		
October	100,1	104,9	106,9	107,3	103,6		
November	100,9	104,7	108,2	102,7	103,8		
December	102,3	105,0	108,9	97,5	104,6		

Table 7 – Total volume of electricity imported: 2005 – 2010

Month	Gigawatt-hours					
	2005	2006	2007	2008	2009	2010
January	729	872	1 088	638	1 102	1 122
February	714	646	942	885	999	995
March	533	581	973	802	1 064	1 040
April	598	587	1 055	844	906	1/ 931
May	849	879	900	761	937	
June	813	881	880	1 002	1 088	
July	856	926	984	1 089	1 040	
August	883	930	1 045	1 076	1 072	
September	686	971	1 026	1 044	920	
October	836	682	1 040	645	1 115	
November	865	862	796	711	940	
December	837	965	619	1 075	1 112	
Year	9 199	9 782	11 348	10 572	12 295	

1/ Preliminary.

Table 8 – Total volume of electricity exported: 2005 – 2010

Month	Gigawatt-hours					
	2005	2006	2007	2008	2009	2010
January	1 030	1 056	1 134	1 280	1 096	1 217
February	901	1 050	1 060	1 101	979	1 128
March	968	1 129	1 231	1 136	1 100	1 252
April	991	1 017	1 132	998	1 086	1/ 1 164
May	1 083	1 046	1 203	1 120	1 109	
June	1 096	1 102	1 256	1 162	1 175	
July	1 102	1 239	1 301	1 249	1 223	
August	1 144	1 262	1 252	1 220	1 235	
September	1 134	1 239	1 186	1 203	1 285	
October	1 161	1 311	1 252	1 258	1 288	
November	1 119	1 186	1 256	1 252	1 213	
December	1 155	1 129	1 233	1 189	1 263	
Year	12 884	13 766	14 496	14 168	14 052	

1/ Preliminary.

Table 9a – Electricity produced and consumed in power stations, purchased and sold outside South Africa and available for distribution in South Africa (monthly figures)

		Gigawatt-hours				
		April 2009	March 2010	April 2010 1/	% change between April 2009 and April 2010	Difference between April 2009 and April 2010
Total - All producers	Electricity produced	19 624	21 917	20 823	6,1	1 199
	Purchased outside South Africa (import)	906	1 040	931	2,8	25
	Consumed in power stations and auxiliary systems	1 511	1 519	1 473	-2,5	-38
	Sold outside South Africa (export)	1 086	1 252	1 164	7,2	78
	Electricity available for distribution in South Africa	17 934	20 186	19 117	6,6	1 183
ESKOM	Electricity produced	18 863	21 298	20 281	7,5	1 418
	Purchased outside South Africa (import)	906	1 040	931	2,8	25
	Consumed in power stations and auxiliary systems	1 439	1 453	1 413	-1,8	-26
	Sold outside South Africa (export)	1 086	1 252	1 164	7,2	78
	Electricity available for distribution in South Africa	17 245	19 633	18 634	8,1	1 389

1/ Preliminary.

Table 9b – Electricity produced and consumed in power stations, purchased and sold outside South Africa and available for distribution in South Africa (cumulative figures)

		Gigawatt-hours			
		January to April 2009	January to April 2010 1/	% change between January to April 2009 and January to April 2010	Difference between January to April 2009 and January to April 2010
Total - All producers	Electricity produced	77 348	83 555	8,0	6 207
	Purchased outside South Africa (import)	4 071	4 088	0,4	17
	Consumed in power stations and auxiliary systems	5 856	6 002	2,5	146
	Sold outside South Africa (export)	4 261	4 761	11,7	500
	Electricity available for distribution in South Africa	71 304	76 880	7,8	5 576
ESKOM	Electricity produced	74 430	81 271	9,2	6 841
	Purchased outside South Africa (import)	4 071	4 088	0,4	17
	Consumed in power stations and auxiliary systems	5 553	5 758	3,7	205
	Sold outside South Africa (export)	4 261	4 761	11,7	500
	Electricity available for distribution in South Africa	68 689	74 840	9,0	6 151

1/ Preliminary.

Table 10 – Total volume of electricity delivered by Eskom to provinces for 2009 and 2010 1/

Period		Gigawatt-hours									
		Western Cape	Eastern Cape	Northern Cape	Free State	KwaZulu-Natal	North West	Gauteng	Mpumalanga	Limpopo	Total South Africa
2009	January	1 886	733	408	748	3 368	1 833	4 502	2 265	849	16 592
	February	1 779	625	367	661	3 196	1 721	4 272	2 154	752	15 527
	March	1 995	691	404	739	3 553	1 936	4 716	2 442	875	17 351
	April	1 812	713	350	673	3 410	1 852	4 499	2 476	860	16 645
	May	1 852	799	361	735	3 583	2 009	5 270	2 736	935	18 280
	June	1 891	744	368	763	3 529	2 033	5 552	2 711	924	18 515
	July	1 942	789	398	825	3 689	2 188	6 059	2 841	975	19 706
	August	1 982	761	370	776	3 620	2 095	5 600	2 810	993	19 007
	September	1 889	769	383	658	3 515	2 055	4 923	2 762	1 045	17 999
	October	1 878	752	398	704	3 629	2 276	5 005	2 885	1 000	18 527
	November	1 837	761	402	739	3 490	2 221	4 916	2 717	942	18 025
	December	1 840	736	420	719	3 499	2 170	4 651	2 725	947	17 707
	Year	22 583	8 873	4 629	8 740	42 081	24 389	59 965	31 524	11 097	213 881
	Year to date	7 472	2 762	1 529	2 821	13 527	7 342	17 989	9 337	3 336	66 115
2010	January	1 932	780	404	751	3 540	2 182	4 806	2 845	991	18 231
	February	1 842	719	383	706	3 281	2 029	4 592	2 658	917	17 127
	March	2 037	809	405	780	3 629	2 273	5 086	2 926	1 032	18 977
	April 2/	1 873	750	362	735	3 432	2 106	4 929	2 813	983	17 982
	Year to date	7 684	3 058	1 554	2 972	13 882	8 590	19 413	11 242	3 923	72 317

1/ Wholesale energy as delivered by Eskom to the various provinces.

2/ Preliminary.

Explanatory Notes

Introduction	1	Statistics South Africa (Stats SA) conducts a monthly sample survey of the electricity industry covering electricity undertakings and establishments (branches). This statistical release contains information regarding the volume of electricity units generated and available for distribution in South Africa, the volume of units purchased and sold outside South Africa and the volume of units distributed by Eskom by province on a monthly basis. Both actual and seasonally adjusted figures are published.
	2	This statistical release reflects indices of the physical volume of electricity production on the basis of 2005=100. In accordance with international practice, the indices have to be rebased every five years to a new base year.
	3	In order to improve timeliness of the publication, some information for the current month may have been estimated due to late submission by respondents. These estimates will be revised in the next statistical release(s) as soon as actual information is available.
Purpose of the survey	4	The results of the monthly electricity generated and available for distribution survey are used to compile estimates of the gross domestic product (GDP) and its components, which are used in monitoring the state of the economy and formulation of economic policy.
Scope of the survey	5	This survey covers electricity undertakings and establishments conducting activities concerned with the generation or transmission and distribution of electricity. It includes electrical power installations, which, as subsidiary divisions of undertakings, produce electricity for regular use by these undertakings.
Classification	6	The 1993 edition of the <i>Standard Industrial Classification of all Economic Activities (SIC)</i> , Fifth Edition, Report No. 09-90-02, was used to classify the statistical units in the survey. The SIC is based on the 1990 <i>International Standard Industrial Classification of all Economic Activities (ISIC)</i> with suitable adaptations for local conditions. Each statistical unit is classified to an industry, which reflects the predominant activity of the electricity undertaking or establishment.
Response rate	7	The response rate for the survey on electricity generated and available for distribution for April 2010 was 99%.
Statistical unit	8	The basic statistical unit for the collection of information is the electricity undertaking or establishment. The electricity undertaking or establishment is the smallest economic unit that functions as a separate entity. Each statistical unit is classified to an industry (see paragraph 5).
Survey methodology and design	9	All statistical units are stratified by type of economic activity according to the <i>Standard Industrial Classification of all Economic Activities (SIC)</i> and measure of size, where measure of size is the volume of electricity generated by the electricity undertaking or establishment. All large undertakings or establishments (size category one cases) are completely enumerated. A sample is drawn from medium and small size undertakings and establishments by systematically selecting undertakings or establishments within each size category. An electricity undertaking or establishment with a total generating capacity of less than 500 kilowatt is excluded from the sample.
	10	The survey is conducted by mail, email and telephone. Information is collected from a sample of 22 electricity undertakings or establishments.
Monthly production indices	11	The calculation of the monthly production indices is based on the volume of electricity units produced.

Benchmarking	12	The index of physical volume of electricity production should provide an accurate reflection of the trend of activities of the relevant industry. The level of activities, as measured by the monthly electricity generated and available for distribution survey, is based on information received from a sample of electricity undertakings and establishments. These levels are weighted according to the original sample and designed to represent the population of electricity undertakings and establishments. It is necessary to adjust the level of activities as measured by the monthly sample survey to the level of activities as measured periodically by the Census of electricity, gas and steam. This procedure, whereby the latest results of an economic census are used to compile more accurate level estimates for a certain year, is known as benchmarking.
	13	The results of the 1995 Census of electricity, gas and steam served as a benchmark to verify or adjust the level of the monthly physical volume of electricity production indices collected through the monthly sample survey. The level adjustments were done on the volume indices for August of the relevant census year (the 1995 census year covered the period 1 January 1995 to 31 December 1995 and therefore, the benchmarking was done using the index of August 1995 as reference point).
Seasonal adjustment	14	Seasonally adjusted estimates of all items are generated each month, using the X-11 Seasonal Adjustment Program developed by US Bureau of the Census Economic Research and Analyses Division, 1968. Seasonal adjustment is a means of removing the estimated effects of normal seasonal variation from the series so that the effects of other influences on the series can be more clearly recognized. Seasonal adjustment does not aim to remove irregular or non-seasonal influences, which may be present in any particular month. Influences that are volatile or unsystematic can still make it difficult to interpret the movement of the series even after adjustment for seasonal variations. This means the month-to-month movements of seasonally adjusted estimates may not be reliable indicators of trend behaviour.
Trend cycle	15	The trend is the long-term pattern or movement of a time series. The X-11 Seasonal Adjustment Program is used for smoothing seasonally adjusted estimates.
Related publications	16	Users may also wish to refer to the following publications which are available from Stats SA - <ul style="list-style-type: none"> • <i>Bulletin of Statistics.</i> • <i>SA Statistics.</i>
Unpublished statistics	17	In some cases Stats SA can also make available statistics, which are not published. The statistics can be made available as computer printouts or on CD. Generally a charge is made for providing unpublished statistics.
Rounding-off of figures	18	Where necessary, the figures in the tables have been rounded off to the nearest digit shown. There may therefore be slight discrepancies between the sums of the constituent items and the totals shown.
Pre-release policy	19	Stats SA pre-release policy may be inspected at its website, www.statssa.gov.za .

Glossary

Consumption of electricity	For purposes of this release the term 'consumption of electricity' is used interchangeably with the term 'electricity available for distribution'.										
Electricity undertaking	An electricity undertaking is an undertaking concerned with the generation or transmission and distribution of electricity, including electrical power installations, which as subsidiary divisions of undertakings produce electricity for regular use by these undertakings.										
Index of physical volume of electricity production	A statistical measure of the change in the volume of production of electricity in a given period and the volume of production of electricity in the base period. The base period is 2005. The production in the base period is set at 100.										
Industry	An industry consists of a group of undertakings or establishments engaged in the same or similar kinds of economic activity. Industries are defined in the 1993 <i>System of National Accounts (1993 SNA)</i> in the same way as in the <i>Standard Industrial Classification of all Economic Activities (SIC)</i> , Fifth Edition, Report No. 09-90-02.										
Unit of electricity	One gigawatt-hour of electricity is equal to one million kilowatt-hours. A kilowatt-hour is the basic unit of electrical energy equal to one kilowatt of power supplied to or taken from an electric circuit steadily for one hour. One kilowatt-hour equals one thousand watt-hours.										
Symbols and abbreviations	<table border="0"> <tr> <td>GDP</td> <td>Gross domestic product</td> </tr> <tr> <td>ISIC</td> <td>International Standard Industrial Classification</td> </tr> <tr> <td>SIC</td> <td>Standard Industrial Classification of all Economic Activities</td> </tr> <tr> <td>Stats SA</td> <td>Statistics South Africa</td> </tr> <tr> <td>*</td> <td>Revised figures</td> </tr> </table>	GDP	Gross domestic product	ISIC	International Standard Industrial Classification	SIC	Standard Industrial Classification of all Economic Activities	Stats SA	Statistics South Africa	*	Revised figures
GDP	Gross domestic product										
ISIC	International Standard Industrial Classification										
SIC	Standard Industrial Classification of all Economic Activities										
Stats SA	Statistics South Africa										
*	Revised figures										

General information

Stats SA publishes approximately 300 different statistical releases each year. It is not economically viable to produce them in more than one of South Africa's eleven official languages. Since the releases are used extensively, not only locally but also by international economic and social-scientific communities, Stats SA releases are published in English only.

Stats SA has copyright on this publication. Users may apply the information as they wish, provided that they acknowledge Stats SA as the source of the basic data wherever they process, apply, utilise, publish or distribute the data: and also that they specify that the relevant application and analysis (where applicable) result from their own processing of the data.

Advanced release calendar

An advanced release calendar is disseminated on www.statssa.gov.za

Stats SA products

A complete set of Stats SA publications is available at the Stats SA Library and the following libraries:

National Library of South Africa, Pretoria Division
National Library of South Africa, Cape Town Division
Natal Society Library, Pietermaritzburg
Library of Parliament, Cape Town
Bloemfontein Public Library
Johannesburg Public Library
Eastern Cape Library Services, King William's Town
Central Regional Library, Polokwane
Central Reference Library, Nelspruit
Central Reference Collection, Kimberley
Central Reference Library, Mmabatho

Stats SA also provides a subscription service.

Electronic services

A large range of data is available via on-line services, diskette, CD and computer printouts.

You can visit us on the Internet at: www.statssa.gov.za

General enquiries

Telephone number: (012) 310 8443 / 336 0142 (technical enquiries)
(012) 310 8358 (orders)
(012) 310 4883/ 4885/ 8018 (library)

Fax number: (012) 310 8664 (technical enquiries)

Email: thembisilem@statssa.gov.za (technical enquiries)
nicolaic@statssa.gov.za (technical enquiries)
info@statssa.gov.za (user information services)
magdaj@statssa.gov.za (orders)

Postal address: Private Bag X44, Pretoria, 0001

Produced by Stats SA