

# Statistical release

## P4141

# Electricity generated and available for distribution (preliminary)

April 2009

Embargoed until:  
4 June 2009  
13:00

**Enquiries:**

User information services  
Tel: (012) 310 8600/ 8390/ 8351

**Forthcoming issue:**

May 2009

**Expected release date**

2 July 2009

**Contents**

**Page**

**SUMMARY OF FINDINGS: ELECTRICITY GENERATED AND AVAILABLE FOR DISTRIBUTION**

**(APRIL 2009)**.....**2**

**Key findings** .....**2**

Consumption of electricity at a lower level than a year ago.....2

Production of electricity at a lower level than a year ago.....2

Distribution of electricity by Eskom to the provinces decreases .....2

International trade in electricity.....2

**Key figures** .....**3**

Table A – Selected key figures regarding electricity generated and available for distribution for April 2009.....3

Table B – Comparison of the seasonally adjusted quantity of electricity generated and available for distribution between the current quarter and the previous quarter.....3

Table C – Comparison of actual estimates between the current quarter and the corresponding quarter of the previous year.....3

Figure 1 – Electricity produced and available for distribution in South Africa from 2006 to 2009.....4

Table 1 – Total volume of electricity available for distribution in South Africa: 2004 to 2009 .....5

Table 2 – Annual percentage change in electricity available for distribution in South Africa: 2004 to 2009 .....5

Table 3 – Seasonally adjusted total volume of electricity available for distribution in South Africa: 2004 to 2009 .....6

Table 4 – Indices of the physical volume of electricity production: 2004 to 2009.....7

Table 5 – Annual percentage change in indices of the physical volume of electricity production: 2004 to 2009.....7

Table 6 – Seasonally adjusted indices of the physical volume of electricity production: 2004 to 2009 .....8

Table 7 – Total volume of electricity imported: 2004 to 2009.....9

Table 8 – Total volume of electricity exported: 2004 to 2009.....9

Table 9a – Electricity produced and consumed in power stations, purchased and sold outside South Africa and available for distribution in South Africa (monthly figures) ..... 10

Table 9b – Electricity produced and consumed in power stations, purchased and sold outside South Africa and available for distribution in South Africa (cumulative figures)..... 10

Table 10 – Electricity distributed by Eskom to provinces for 2008 and 2009 .....11

**Explanatory Notes**.....**12**

**Glossary**.....**14**

**General information** .....**15**

---

## **SUMMARY OF FINDINGS: ELECTRICITY GENERATED AND AVAILABLE FOR DISTRIBUTION (APRIL 2009)**

### **Key findings**

#### **Consumption of electricity at a lower level than a year ago**

The estimated consumption of electricity in April 2009 decreased by 6,2% (-1 190 Gigawatt-hours) compared with April 2008 (see tables A, 2 and 9a). Electricity consumed for the first four months of 2009 decreased by 7,0% (-5 343 Gigawatt-hours) compared with the first four months of 2008 (see tables A and 9b). However, electricity consumption after seasonal adjustment for April 2009 increased by 2,0% compared with March 2009 and by 0,4% for the latest three months ended April 2009 compared with the previous three months ended January 2009 (see tables A, 3 and 6).

#### **Production of electricity at a lower level than a year ago**

The estimated production of electricity in April 2009 decreased by 5,7% (-1 188 Gigawatt-hours) compared with April 2008 (see tables A, 5 and 9a). The estimated production of electricity for the first four months of 2009 decreased by 8,1% (-6 848 Gigawatt-hours) compared with the first four months of 2008 (see tables A and 9b). However, the estimated production of electricity, after seasonal adjustment, increased by 2,7% for April 2009 compared with March 2009 (see tables A and 6).

#### **Distribution of electricity by Eskom to the provinces decreases**

Electricity distributed to the provinces for the first four months of 2009 decreased by 7,0% (-4 954 Gigawatt-hours) compared with the first four months of 2008. Decreases were reported for all the provinces during this period ranging from -14,8% for North West to -0,7% for KwaZulu-Natal.

#### **International trade in electricity**

The volume of electricity imported from outside South African borders increased from 3 169 Gigawatt-hours in the first four months of 2008 to 4 071 Gigawatt-hours in the first four months of 2009, representing an increase of 28,5% (902 Gigawatt-hours). The volume of electricity exported to neighbouring countries for the first four months of 2009 decreased by 5,6% (-254 Gigawatt-hours) compared with the first four months of 2008, from 4 515 Gigawatt-hours to 4 261 Gigawatt-hours (see table 9b).

## Key figures

**Table A – Selected key figures regarding electricity generated and available for distribution for April 2009**

Estimates	April 2009 1/	% change between April 2008 and April 2009	% change between February to April 2008 and February to April 2009	% change between January to April 2008 and January to April 2009
Electricity available for distribution (Gigawatt-hours)	17 937	-6,2	-7,0	-7,0
Index of the physical volume of electricity production (2005=100)	96,2	-5,7	-7,5	-8,1

1/ Preliminary.

Seasonally adjusted estimates	April 2009	% change between March and April 2009	% change between November 2008 to January 2009 and February to April 2009
Electricity available for distribution (Gigawatt-hours)	18 908	2,0	0,4
Index of the physical volume of electricity production (2005=100)	101,0	2,7	-0,4

**Table B – Comparison of the seasonally adjusted quantity of electricity generated and available for distribution between the current quarter and the previous quarter**

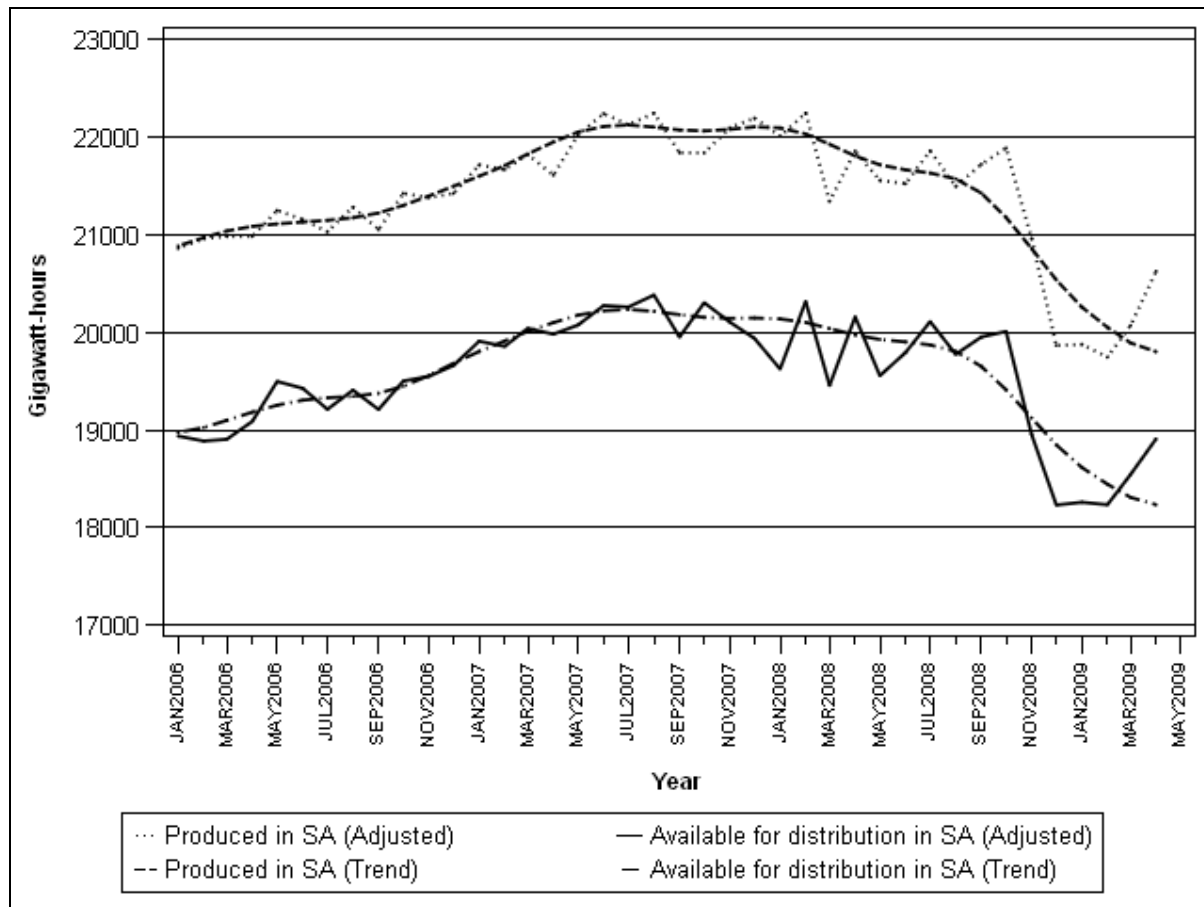
Gigawatt-hours	Seasonally adjusted quantity November 2008 to January 2009	Seasonally adjusted quantity February to April 2009	% change between November 2008 to January 2009 and February to April 2009	Quantity difference between November 2008 to January 2009 and February to April 2009
Electricity produced	60 699	60 437	-0,4	-262
Electricity available for distribution in South Africa	55 443	55 685	0,4	242

**Table C – Comparison of actual estimates between the current quarter and the corresponding quarter of the previous year**

Gigawatt-hours	Actual quantity February to April 2008	Actual quantity February to April 2009	% change between February to April 2008 and February to April 2009	Quantity difference between February to April 2008 and February to April 2009
Electricity produced	62 710	57 957	-7,6	-4 753
Purchased outside South Africa (import)	2 531	2 969	17,3	438
Consumed in power stations and auxiliary systems	4 607	4 372	-5,1	-235
Sold outside South Africa (export)	3 235	3 165	-2,2	-70
Electricity available for distribution in South Africa	57 398	53 392	-7,0	-4 006

Figure 1 below shows the seasonally adjusted and trend patterns for electricity produced and available for distribution in South Africa from January 2006 to April 2009.

**Figure 1 – Electricity produced and available for distribution in South Africa from 2006 to 2009**



**P J Lehohla**  
**Statistician-General**

**Detailed results: Tables**

**Table 1 – Total volume of electricity available for distribution in South Africa: 2004 to 2009**

Month	Gigawatt-hours					
	2004	2005	2006	2007	2008	2009
January	17 850	18 149	18 603	19 561	19 256	17 919
February	17 277	17 169	17 396	18 301	18 668	16 757
March	18 476	18 487	18 982	20 160	19 603	18 698
April	17 524	18 133	18 122	18 982	19 127	1/ 17 937
May	18 909	19 224	20 312	20 901	20 365	
June	19 337	18 983	20 166	21 020	20 515	
July	20 156	19 657	20 632	21 780	21 610	
August	19 265	19 191	20 307	21 353	20 736	
September	18 362	18 384	18 987	19 732	19 725	
October	18 714	19 127	19 663	20 435	20 138	
November	18 314	18 523	19 244	19 785	18 640	
December	17 754	18 230	18 909	19 160	17 541	
<b>Year</b>	<b>221 938</b>	<b>223 257</b>	<b>231 323</b>	<b>241 170</b>	<b>235 924</b>	

1/ Preliminary.

**Table 2 – Annual percentage change in electricity available for distribution in South Africa: 2004 to 2009**

Month	Percentage change 1/					
	2004	2005	2006	2007	2008	2009
January	4,4	1,7	2,5	5,1	-1,6	-6,9
February	6,9	-0,6	1,3	5,2	2,0	-10,2
March	4,7	0,1	2,7	6,2	-2,8	-4,6
April	3,7	3,5	-0,1	4,7	0,8	-6,2
May	4,1	1,7	5,7	2,9	-2,6	
June	5,5	-1,8	6,2	4,2	-2,4	
July	5,1	-2,5	5,0	5,6	-0,8	
August	2,9	-0,4	5,8	5,2	-2,9	
September	4,8	0,1	3,3	3,9	0,0	
October	1,3	2,2	2,8	3,9	-1,5	
November	2,9	1,1	3,9	2,8	-5,8	
December	1,7	2,7	3,7	1,3	-8,4	
<b>Year</b>	<b>4,0</b>	<b>0,6</b>	<b>3,6</b>	<b>4,3</b>	<b>-2,2</b>	

1/ The percentage change is the change in the index of the physical volume of electricity available for distribution of the relevant year compared with the index of the physical volume of electricity available for distribution of the previous year expressed as a percentage.

**Table 3 – Seasonally adjusted total volume of electricity available for distribution in South Africa: 2004 to 2009**

Month	Gigawatt-hours						% change between current and previous month
	2004	2005	2006	2007	2008	2009	
January	18 197	18 486	18 937	19 908	19 623	18 259	0,2
February	18 746	18 630	18 886	19 855	20 314	18 234	-0,1
March	18 399	18 442	18 904	20 040	19 455	18 543	1,7
April	18 361	19 059	19 088	19 980	20 157	18 908	2,0
May	18 139	18 453	19 496	20 074	19 555		
June	18 568	18 256	19 426	20 273	19 791		
July	18 747	18 294	19 211	20 258	20 109		
August	18 469	18 368	19 407	20 381	19 774		
September	18 601	18 621	19 209	19 951	19 951		
October	18 481	18 932	19 500	20 302	20 008		
November	18 616	18 817	19 548	20 104	18 953		
December	18 543	18 989	19 660	19 936	18 231		

**Table 4 – Indices of the physical volume of electricity production: 2004 to 2009**

Month	Base : 2005=100					
	2004	2005	2006	2007	2008	2009
January	95,5	97,6	99,8	103,9	105,3	95,0
February	92,2	91,7	94,0	97,2	99,7	88,5
March	98,7	100,2	103,3	107,8	105,6	99,3
April	94,7	98,1	98,0	100,9	102,0	1/ 96,2
May	102,4	102,9	108,1	112,0	109,6	
June	105,0	101,6	107,3	112,5	108,8	
July	109,5	105,5	110,8	116,6	115,1	
August	104,3	103,0	109,1	114,1	110,3	
September	99,5	99,1	101,8	105,5	104,8	
October	102,1	102,5	107,2	109,1	109,4	
November	98,5	99,4	103,3	106,9	101,4	
December	96,0	98,2	100,9	104,6	93,6	
Year	99,9	100,0	103,6	107,6	105,5	

1/ Preliminary.

**Table 5 – Annual percentage change in indices of the physical volume of electricity production: 2004 to 2009**

Month	Percentage change 1/					
	2004	2005	2006	2007	2007	2009
January	6,6	2,2	2,3	4,1	1,3	-9,8
February	8,9	-0,5	2,5	3,4	2,6	-11,2
March	6,2	1,5	3,1	4,4	-2,0	-6,0
April	5,1	3,6	-0,1	3,0	1,1	-5,7
May	5,3	0,5	5,1	3,6	-2,1	
June	6,6	-3,2	5,6	4,8	-3,3	
July	6,8	-3,7	5,0	5,2	-1,3	
August	1,9	-1,2	5,9	4,6	-3,3	
September	2,6	-0,4	2,7	3,6	-0,7	
October	-0,1	0,4	4,6	1,8	0,3	
November	2,2	0,9	3,9	3,5	-5,1	
December	2,1	2,3	2,7	3,7	-10,5	
Year	4,4	0,1	3,7	3,8	-2,0	

1/ The percentage change is the change in the index of the physical volume of electricity production of the relevant year compared with the index of the physical volume of electricity production of the previous year expressed as a percentage.



**Table 6 – Seasonally adjusted indices of the physical volume of electricity production: 2004 to 2009**

Month	Base : 2005=100						% change between current and previous month
	2004	2005	2006	2007	2008	2009	
January	98,0	100,1	102,1	106,3	107,8	97,3	0,0
February	101,1	100,3	102,6	106,1	108,9	96,7	-0,6
March	98,7	100,0	102,7	106,9	104,5	98,3	1,7
April	99,1	102,8	102,7	105,8	107,0	101,0	2,7
May	98,5	99,0	104,0	107,8	105,5		
June	100,9	97,9	103,6	108,9	105,4		
July	101,5	97,9	103,0	108,3	107,0		
August	99,7	98,4	104,2	108,9	105,2		
September	100,4	100,3	103,1	106,9	106,4		
October	99,5	100,1	104,9	106,9	107,2		
November	100,1	100,9	104,7	108,2	102,6		
December	100,4	102,3	104,9	108,7	97,3		

**Table 7 – Total volume of electricity imported: 2004 to 2009**

Month	Gigawatt-hours					
	2004	2005	2006	2007	2008	2009
January	828	729	872	1 088	638	1 102
February	811	714	646	942	885	999
March	863	533	581	973	802	1 064
April	641	598	587	1 055	844	1/ 906
May	547	849	879	900	761	
June	560	813	881	880	1 002	
July	607	856	926	984	1 089	
August	618	883	930	1 045	1 076	
September	590	686	971	1 026	1 044	
October	536	836	682	1 040	645	
November	746	865	862	796	711	
December	679	837	965	619	1 075	
<b>Year</b>	<b>8 026</b>	<b>9 199</b>	<b>9 782</b>	<b>11 348</b>	<b>10 572</b>	

1/ Preliminary.

**Table 8 – Total volume of electricity exported: 2004 to 2009**

Month	Gigawatt-hours					
	2004	2005	2006	2007	2008	2009
January	1 037	1 030	1 056	1 134	1 280	1 096
February	977	901	1 050	1 060	1 101	979
March	1 027	968	1 129	1 231	1 136	1 100
April	951	991	1 017	1 132	998	1/ 1 086
May	944	1 083	1 046	1 203	1 120	
June	1 057	1 096	1 102	1 256	1 162	
July	1 140	1 102	1 239	1 301	1 249	
August	1 049	1 144	1 262	1 252	1 220	
September	1 048	1 134	1 239	1 186	1 203	
October	1 112	1 161	1 311	1 252	1 258	
November	1 082	1 119	1 186	1 256	1 252	
December	1 029	1 155	1 129	1 233	1 189	
<b>Year</b>	<b>12 453</b>	<b>12 884</b>	<b>13 766</b>	<b>14 496</b>	<b>14 168</b>	

1/ Preliminary.

**Table 9a – Electricity produced and consumed in power stations, purchased and sold outside South Africa and available for distribution in South Africa (monthly figures)**

		Gigawatt-hours				
		April 2008	March 2009	April 2009 1/	% change between April 2008 and April 2009	Difference between April 2008 and April 2009
<b>Total - All producers</b>	Electricity produced	20 813	20 276	19 625	-5,7	-1 188
	Purchased outside South Africa (import)	844	1 064	906	7,3	62
	Consumed in power stations and auxiliary systems	1 531	1 543	1 510	-1,4	-21
	Sold outside South Africa (export)	998	1 100	1 086	8,8	88
	Electricity available for distribution in South Africa	19 127	18 698	17 937	-6,2	-1 190
<b>ESKOM</b>	Electricity produced	19 863	19 540	18 863	-5,0	-1 000
	Purchased outside South Africa (import)	844	1 064	906	7,3	62
	Consumed in power stations and auxiliary systems	1 438	1 463	1 439	0,1	1
	Sold outside South Africa (export)	998	1 100	1 086	8,8	88
	Electricity available for distribution in South Africa	18 271	18 042	17 245	-5,6	-1 026

1/ Preliminary.

**Table 9b – Electricity produced and consumed in power stations, purchased and sold outside South Africa and available for distribution in South Africa (cumulative figures)**

		Gigawatt-hours			
		January to April 2008	January to April 2009 1/	% change between January to April 2008 and January to April 2009	Difference between January to April 2008 and January to April 2009
<b>Total - All producers</b>	Electricity produced	84 200	77 352	-8,1	-6 848
	Purchased outside South Africa (import)	3 169	4 071	28,5	902
	Consumed in power stations and auxiliary systems	6 198	5 855	-5,5	-343
	Sold outside South Africa (export)	4 515	4 261	-5,6	-254
	Electricity available for distribution in South Africa	76 654	71 311	-7,0	-5 343
<b>ESKOM</b>	Electricity produced	80 774	74 430	-7,9	-6 344
	Purchased outside South Africa (import)	3 169	4 071	28,5	902
	Consumed in power stations and auxiliary systems	5 845	5 553	-5,0	-292
	Sold outside South Africa (export)	4 515	4 261	-5,6	-254
	Electricity available for distribution in South Africa	73 581	68 689	-6,6	-4 892

1/ Preliminary.

**Table 10 – Electricity distributed by Eskom to provinces for 2008 and 2009 1/**

		Gigawatt-hours									
		Western Cape	Eastern Cape	Northern Cape	Free State	KwaZulu-Natal	North West	Gauteng	Mpumalanga	Limpopo	Total South Africa
2008	January	1 928	749	396	749	3 552	2 207	4 861	2 661	874	17 977
	February	1 839	758	396	700	3 390	2 102	4 640	2 600	898	17 323
	March	1 937	779	393	749	3 363	2 217	4 945	2 801	934	18 118
	April	1 893	753	363	717	3 322	2 089	4 784	2 796	934	17 651
	May	1 985	760	373	796	3 417	2 141	5 414	2 990	1 015	18 891
	June	1 987	834	374	800	3 333	2 142	5 523	2 966	992	18 951
	July	2 065	864	410	839	3 571	2 234	5 919	3 078	1 044	20 024
	August	1 999	845	406	757	3 575	2 180	5 438	2 937	1 039	19 176
	September	1 975	829	419	785	3 460	2 093	5 009	2 806	1 005	18 381
	October	1 952	838	442	803	3 575	2 192	4 983	2 985	1 010	18 780
	November	1 813	750	405	754	3 425	2 052	4 665	2 594	828	17 286
	December	1 872	673	391	737	3 258	1 845	4 292	2 399	848	16 315
	Year	23 245	9 432	4 768	9 186	41 241	25 494	60 473	33 613	11 421	218 873
	Year to date	7 597	3 039	1 548	2 915	13 627	8 615	19 230	10 858	3 640	71 069
2009	January	1 886	733	408	748	3 368	1 833	4 502	2 265	849	16 592
	February	1 779	625	367	661	3 196	1 721	4 272	2 154	752	15 527
	March	1 995	691	404	739	3 553	1 936	4 716	2 442	875	17 351
	April 2/	1 812	713	350	673	3 410	1 852	4 499	2 476	860	16 645
	Year to date	7 472	2 762	1 529	2 821	13 527	7 342	17 989	9 337	3 336	66 115

1/ Wholesale energy as delivered by Eskom to the various provinces.

2/ Preliminary.

## Explanatory Notes

<b>Introduction</b>	1	Statistics South Africa (Stats SA) conducts a monthly sample survey of the electricity industry covering electricity undertakings and establishments (branches). This statistical release contains information regarding the number of electricity units generated and available for distribution in South Africa, the number of units purchased and sold outside South Africa and the number of units distributed by Eskom by province on a monthly basis. Both actual and seasonally adjusted figures are published.
	2	This statistical release reflects indices of the physical volume of electricity production on the basis of 2005=100. In accordance with international practice, the indices have to be rebased every five years to a new base year.
	3	In order to improve timeliness of the publication, some information for the current month may have been estimated due to late submission by respondents. These estimates will be revised in the next statistical release(s) as soon as actual information is available.
<b>Purpose of the survey</b>	4	The results of the monthly electricity generated and available for distribution survey are used to compile estimates of the Gross Domestic Product (GDP) and its components, which are used in monitoring the state of the economy and formulation of economic policy.
<b>Scope of the survey</b>	5	This survey covers electricity undertakings and establishments conducting activities concerned with the generation or transmission and distribution of electricity, including electrical power installations, which, as subsidiary divisions of undertakings, produce electricity for regular use by these undertakings.
<b>Classification</b>	6	The 1993 edition of the <i>Standard Industrial Classification of all Economic Activities (SIC)</i> , Fifth Edition, Report No. 09-90-02, was used to classify the statistical units in the survey. The SIC is based on the 1990 <i>International Standard Industrial Classification of all Economic Activities (ISIC)</i> with suitable adaptations for local conditions. Each statistical unit is classified to an industry, which reflects the predominant activity of the electricity undertaking or establishment.
<b>Response rate</b>	7	The response rate for the survey on electricity generated and available for distribution for April 2009 was 99%.
<b>Statistical unit</b>	8	The basic statistical unit for the collection of information is the electricity undertaking or establishment. The electricity undertaking or establishment is the smallest economic unit that functions as a separate entity. Each statistical unit is classified to an industry (see paragraph 5).
<b>Survey methodology and design</b>	9	All statistical units are stratified by type of economic activity according to the <i>Standard Industrial Classification of all Economic Activities (SIC)</i> and measure of size, where measure of size is the volume of electricity generated by the electricity undertaking or establishment. All large undertakings or establishments (size category one cases) are completely enumerated. A sample is drawn from medium and small size undertakings and establishments by systematically selecting undertakings or establishments within each size category. An electricity undertaking or establishment with a total generating capacity of less than 500 kilowatt is excluded from the sample.
	10	The survey is conducted by mail each month collecting information from a sample of 22 electricity undertakings or establishments.
<b>Monthly production indices</b>	11	The calculation of the monthly production indices is based on the number of electricity units produced.

<b>Benchmarking</b>	<b>12</b>	The index of physical volume of electricity production should provide an accurate reflection of the trend of activities of the relevant industry. The level of activities as measured by the monthly electricity generated and available for distribution survey is based on information received from a sample of electricity undertakings and establishments, which are weighted according to the original sample, designed in order to represent the population of electricity undertakings and establishments. It is necessary to adjust the level of activities as measured by the monthly sample survey to the level of activities as measured periodically by the Census of electricity, gas and steam. This procedure, whereby the latest results of an economic census are used to compile more accurate level estimates for a certain year, is known as benchmarking.
	<b>13</b>	The results of the 1995 Census of electricity, gas and steam served as benchmarks to verify or adjust the level of the monthly physical volume of electricity production indices collected through the monthly sample survey. The level adjustments were done on the volume indices for August of the relevant census year (the 1995 census year covered the period 1 January 1995 to 31 December 1995 and therefore, the benchmarking was done using the index of August 1995 as reference point).
<b>Seasonal adjustment</b>	<b>14</b>	Seasonally adjusted estimates of all items are generated each month, using the X-11 Seasonal Adjustment Program developed by US Bureau of the Census Economic Research and Analyses Division, 1968. Seasonal adjustment is a means of removing the estimated effects of normal seasonal variation from the series so that the effects of other influences on the series can be more clearly recognized. Seasonal adjustment does not aim to remove irregular or non-seasonal influences, which may be present in any particular month. Influences that are volatile or unsystematic can still make it difficult to interpret the movement of the series even after adjustment for seasonal variations. This means the month-to-month movements of seasonally adjusted estimates may not be reliable indicators of trend behaviour.
<b>Trend cycle</b>	<b>15</b>	The trend is the long-term pattern or movement of a time series. The X-11 Seasonal Adjustment Program is used for smoothing seasonally adjusted estimates.
<b>Related publications</b>	<b>16</b>	Users may also wish to refer to the following publications which are available from Stats SA - <ul style="list-style-type: none"> <li>• <i>Bulletin of Statistics.</i></li> <li>• <i>SA Statistics.</i></li> </ul>
<b>Unpublished statistics</b>	<b>17</b>	In some cases Stats SA can also make available statistics, which are not published. The statistics can be made available as computer printouts, on diskette or CD. Generally a charge is made for providing unpublished statistics.
<b>Rounding-off figures</b>	<b>18</b>	The figures in the tables have, where necessary, been rounded off to the nearest digit shown. There may, therefore, be slight discrepancies between the sums of the constituent items and the totals shown.
<b>Pre-release policy</b>	<b>19</b>	Stats SA pre-release policy may be inspected at its website, <a href="http://www.statssa.gov.za">www.statssa.gov.za</a> .

## Glossary

<b>Electricity undertaking</b>	An electricity undertaking is an undertaking concerned with the generation or transmission and distribution of electricity, including electrical power installations, which as subsidiary divisions of undertakings produce electricity for regular use by these undertakings.										
<b>Index of physical volume of electricity production</b>	A statistical measure of the change in the volume of production of electricity in a given period and the volume of production of electricity in the base period. The base period is 2005. The production in the base period is set at 100.										
<b>Industry</b>	An industry consists of a group of undertakings or establishments engaged in the same or similar kinds of economic activity. Industries are defined in the 1993 <i>System of National Accounts (1993 SNA)</i> in the same way as in the <i>Standard Industrial Classification of all Economic Activities (SIC)</i> , Fifth Edition, Report No. 09-90-02.										
<b>Unit of electricity</b>	One gigawatt-hour of electricity is equal to one million kilowatt-hours. A kilowatt-hour is the basic unit of electrical energy equal to one kilowatt of power supplied to or taken from an electric circuit steadily for one hour. One kilowatt-hour equals one thousand watt-hours.										
<b>Symbols and abbreviations</b>	<table border="0"> <tr> <td>GDP</td> <td>Gross Domestic Product</td> </tr> <tr> <td>ISIC</td> <td>International Standard Industrial Classification</td> </tr> <tr> <td>SIC</td> <td>Standard Industrial Classification of all Economic Activities</td> </tr> <tr> <td>Stats SA</td> <td>Statistics South Africa</td> </tr> <tr> <td>*</td> <td>Revised figures</td> </tr> </table>	GDP	Gross Domestic Product	ISIC	International Standard Industrial Classification	SIC	Standard Industrial Classification of all Economic Activities	Stats SA	Statistics South Africa	*	Revised figures
GDP	Gross Domestic Product										
ISIC	International Standard Industrial Classification										
SIC	Standard Industrial Classification of all Economic Activities										
Stats SA	Statistics South Africa										
*	Revised figures										

## General information

Stats SA publishes approximately 300 different statistical releases each year. It is not economically viable to produce them in more than one of South Africa's eleven official languages. Since the releases are used extensively, not only locally but also by international economic and social-scientific communities, Stats SA releases are published in English only.

Stats SA has copyright on this publication. Users may apply the information as they wish, provided that they acknowledge Stats SA as the source of the basic data wherever they process, apply, utilise, publish or distribute the data: and also that they specify that the relevant application and analysis (where applicable) result from their own processing of the data.

### Advanced release calendar

An advanced release calendar is disseminated on [www.statssa.gov.za](http://www.statssa.gov.za)

### Stats SA products

A complete set of Stats SA publications is available at the Stats SA Library and the following libraries:

National Library of South Africa, Pretoria Division  
National Library of South Africa, Cape Town Division  
Natal Society Library, Pietermaritzburg  
Library of Parliament, Cape Town  
Bloemfontein Public Library  
Johannesburg Public Library  
Eastern Cape Library Services, King William's Town  
Central Regional Library, Polokwane  
Central Reference Library, Nelspruit  
Central Reference Collection, Kimberley  
Central Reference Library, Mmabatho

Stats SA also provides a subscription service.

### Electronic services

A large range of data is available via on-line services, diskette, CD and computer printouts. For more details about our electronic data services, contact (012) 310 8600/8390/8351/8496/4892/8095.

You can visit us on the Internet at: [www.statssa.gov.za](http://www.statssa.gov.za)

### General enquiries

Telephone number: (012) 336 0142/ 310 8443/ 310 2229 (technical enquiries)  
(012) 310 8161 (orders)  
(012) 310 4883/ 4885/ 8018 (library)

Fax number: (012) 310 8664 (technical enquiries)

email: [gerdab@statssa.gov.za](mailto:gerdab@statssa.gov.za) (technical enquiries)  
[nicolaic@statssa.gov.za](mailto:nicolaic@statssa.gov.za) (technical enquiries)  
[thembisilem@statssa.gov.za](mailto:thembisilem@statssa.gov.za) (technical enquiries)  
[orapelengm@statssa.gov.za](mailto:orapelengm@statssa.gov.za) (technical enquiries)  
[info@statssa.gov.za](mailto:info@statssa.gov.za) (user information services)  
[distribution@statssa.gov.za](mailto:distribution@statssa.gov.za) (orders)

Postal address: Private Bag X44, Pretoria, 0001

*Produced by Stats SA*