



The South Africa I know, the home I understand

Statistical release

P3041.2

Manufacturing: Production and sales (Preliminary)

June 2016

The results published in the next publication (July 2016) will be based on a new sample. This is an annual procedure which typically affects the level of sales. To avoid breaks in time series and to minimise revisions to historical growth rates, historical sales levels will be revised (i.e. they will be linked to the estimates based on the new sample).

**Embargoed until:
11 August 2016
13:00**

Enquiries:

Nicolai Claassen
Tel. (012) 310 8007

Forthcoming issue:

July 2016

Expected release date

8 September 2016

Contents

Production: results for June 20162

Table A – Key growth rates in the volume of manufacturing production2

Table B – Seasonally adjusted manufacturing production for the latest three months by division and major group (Base: 2010=100)3

Figure 1 – Volume of manufacturing production (Base: 2010=100)4

Figure 2 – Volume of manufacturing production (Base: 2010=100): year-on-year percentage change4

Sales: results for June 20165

Table C – Key growth rates in manufacturing sales at current prices5

Table D – Seasonally adjusted manufacturing sales at current prices for the latest three months by division5

Tables.....6

Table 1 – Index of the volume of manufacturing production (Base: 2010=100).....6

Table 2 – Year-on-year percentage change in the volume of manufacturing production6

Table 3 – Seasonally adjusted volume of manufacturing production6

Table 4 – Index of the volume of manufacturing production by division and major group (Base: 2010=100)7

Table 5 – Year-on-year percentage change in the volume of manufacturing production by division and major group (Base: 2010=100)8

Table 6 – Contribution of each division and major group to the year-on-year percentage change in the volume of manufacturing production (percentage points)9

Table 7 – Seasonally adjusted index of the volume of manufacturing production by division and major group (Base: 2010=100)10

Table 8 – Manufacturing sales at current prices (R million)11

Table 9 – Year-on-year percentage change in manufacturing sales at current prices.....11

Table 10 – Seasonally adjusted manufacturing sales at current prices11

Table 11 – Manufacturing sales at current prices by division and major group (R million)12

Table 12 – Year-on-year percentage change in manufacturing sales at current prices by division and major group.....13

Table 13 – Contribution of each division and major group to the year-on-year percentage change in manufacturing sales at current prices (percentage points)14

Table 14 – Seasonally adjusted manufacturing sales at current prices by division and major group (R million)15

Survey information16

Technical notes.....17

Table G – Weights by division and major group.....19

Glossary.....21

Technical enquiries21

General information.....22

Production: results for June 2016

Table A – Key growth rates in the volume of manufacturing production

	Jan-16	Feb-16	Mar-16	Apr-16	May-16	Jun-16
Year-on-year % change, unadjusted	-2,2	2,3	-2,1	3,2	3,9	4,5
Month-on-month % change, seasonally adjusted	-1,3	1,9	-0,5	0,6	1,3	0,7
3-month % change, seasonally adjusted ¹	-0,9	-0,2	0,3	1,3	1,2	2,0

¹ Percentage change between the previous 3 months and the 3 months ending in the month indicated.

Manufacturing production increased by 4,5% in June 2016 compared with June 2015. This increase was mainly due to higher production in the following divisions:

- petroleum, chemical products, rubber and plastic products (15,4% and contributing 3,4 percentage points);
- wood and wood products, paper, publishing and printing (4,4% and contributing 0,6 of a percentage point); and
- food and beverages (2,0% and contributing 0,5 of a percentage point) – see Tables 5 and 6.

Seasonally adjusted manufacturing production increased by 0,7% in June 2016 compared with May 2016. This followed month-on-month changes of 1,3% in May 2016 and 0,6% in April 2016 – see Table A.

Seasonally adjusted manufacturing production increased by 2,0% in the second quarter of 2016 compared with the first quarter of 2016. Eight of the ten manufacturing divisions reported positive growth rates over this period.

The largest contributions to the 2,0% increase were made by the following divisions:

- petroleum, chemical products, rubber and plastic products (3,9% and contributing 0,9 of a percentage point);
- motor vehicles, parts and accessories and other transport equipment (7,2% and contributing 0,5 of a percentage point); and
- food and beverages (1,9% and contributing 0,5 of a percentage point) – see Table B.

Table B – Seasonally adjusted manufacturing production for the latest three months by division and major group (Base: 2010=100)

Manufacturing division and major group	Weight (2013)	Jan – Mar 2016	Apr – Jun 2016	% change between Jan – Mar 2016 and Apr – Jun 2016	Contribution (% points) to the total % change
Food and beverages	24,53	112,1	114,2	1,9	0,5
Meat, fish, fruit, etc.	5,99	117,7	119,3	1,4	0,1
Dairy products	1,81	117,7	114,7	-2,5	-0,1
Grain mill products	2,61	107,1	106,3	-0,7	0,0
Other food products	7,78	106,9	104,7	-2,1	-0,2
Beverages	6,34	113,6	124,3	9,4	0,6
Textiles, clothing, leather and footwear	3,34	95,2	95,6	0,4	0,0
Textiles	0,89	88,2	86,2	-2,3	0,0
Other textile products	0,36	91,4	95,4	4,4	0,0
Knitted, crocheted articles	0,09	55,0	53,1	-3,5	0,0
Wearing apparel	1,13	95,3	93,9	-1,5	0,0
Leather and leather products	0,50	113,9	120,9	6,1	0,0
Footwear	0,37	99,9	99,3	-0,6	0,0
Wood and wood products, paper, publishing and printing	12,62	108,7	107,5	-1,1	-0,1
Sawmilling and planing of wood	1,81	130,9	141,3	7,9	0,2
Products of wood	2,47	109,1	105,8	-3,0	-0,1
Paper and paper products	4,96	111,3	103,3	-7,2	-0,4
Publishing	1,55	93,2	98,3	5,5	0,1
Printing, recorded media	1,83	92,6	95,1	2,7	0,0
Petroleum, chemical products, rubber and plastic products	23,58	110,6	114,9	3,9	0,9
Coke, petroleum products and nuclear fuel	9,01	106,0	109,4	3,2	0,3
Basic chemicals	4,08	115,4	124,0	7,5	0,3
Other chemical products	6,21	120,5	126,1	4,6	0,3
Rubber products	1,35	97,3	105,2	8,1	0,1
Plastic products	2,93	103,8	99,4	-4,2	-0,1
Glass and non-metallic mineral products	4,15	96,1	97,7	1,7	0,1
Glass and glass products	0,83	96,1	101,5	5,6	0,0
Non-metallic mineral products	3,32	96,1	96,8	0,7	0,0
Basic iron and steel, non-ferrous metal products, metal products and machinery	18,77	98,5	99,1	0,6	0,1
Basic iron and steel products	3,27	90,2	96,4	6,9	0,2
Non-ferrous metal products	3,11	94,4	95,1	0,7	0,0
Structural metal products	1,83	79,7	76,4	-4,1	-0,1
Other fabricated metal products	3,92	121,5	122,6	0,9	0,0
General purpose machinery	2,37	77,8	78,8	1,3	0,0
Special purpose machinery	3,44	108,9	106,3	-2,4	-0,1
Household appliances	0,83	94,9	90,9	-4,2	0,0
Electrical machinery	1,67	111,1	108,6	-2,3	0,0
Radio, television and communication apparatus and professional equipment	1,55	136,8	138,3	1,1	0,0
Radio, television and communication	0,90	156,9	162,5	3,6	0,0
Professional equipment	0,65	109,0	104,8	-3,9	0,0
Motor vehicles, parts and accessories and other transport equipment	6,85	107,5	115,2	7,2	0,5
Motor vehicles	2,47	125,8	143,4	14,0	0,4
Bodies for motor vehicles, trailers and semi-	0,44	114,8	108,3	-5,7	0,0
Parts and accessories	2,78	94,0	95,3	1,4	0,0
Other transport equipment	1,16	98,4	105,8	7,5	0,1
Furniture and other manufacturing	2,94	84,6	86,1	1,8	0,0
Furniture	1,06	96,4	97,6	1,2	0,0
Other manufacturing groups	1,88	78,0	79,6	2,1	0,0
Total	100	106,8	108,9	2,0	2,0

Figure 1 – Volume of manufacturing production (Base: 2010=100)

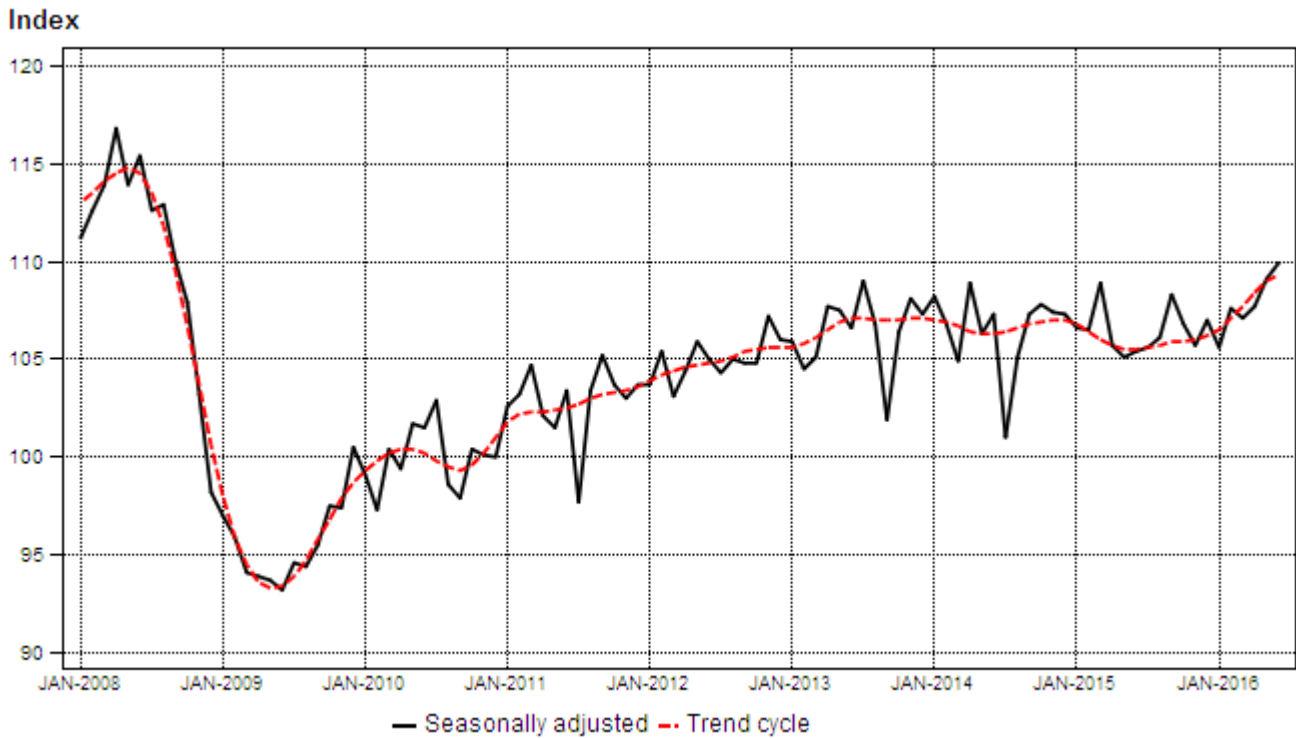
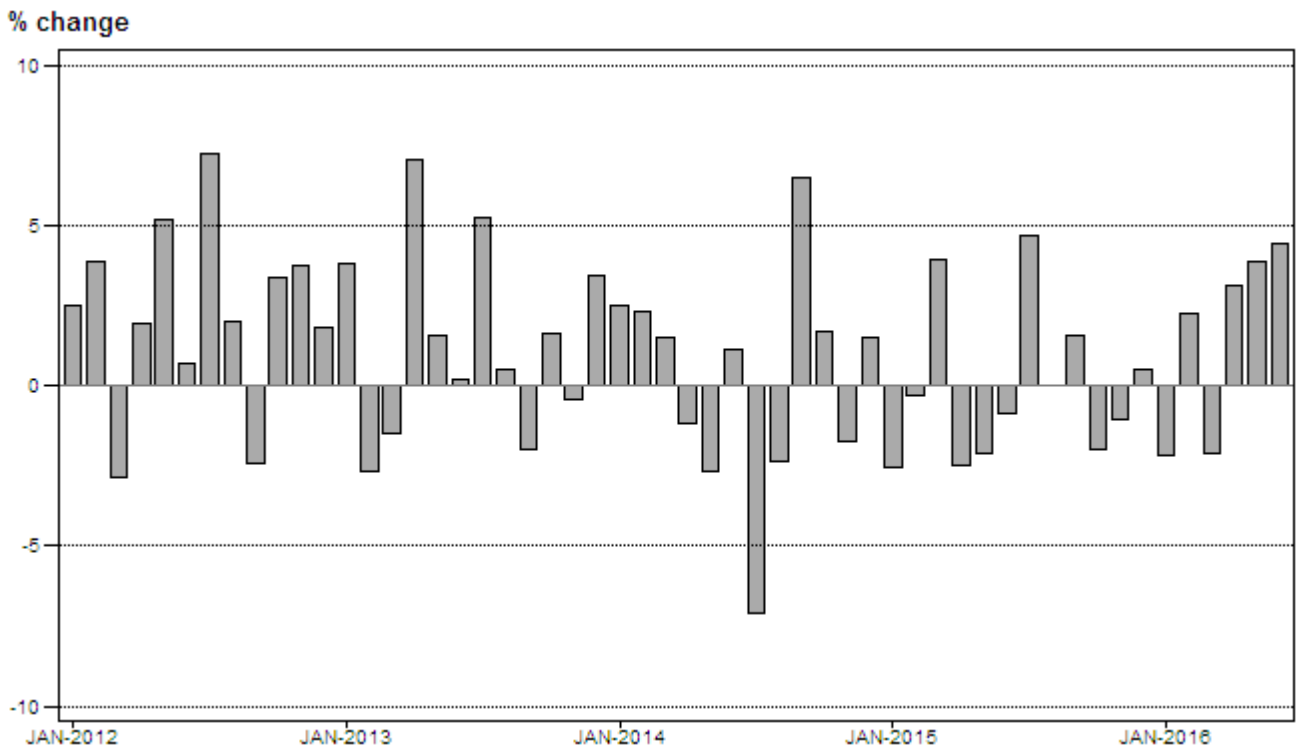


Figure 2 – Volume of manufacturing production (Base: 2010=100): year-on-year percentage change



Sales: results for June 2016

Table C – Key growth rates in manufacturing sales at current prices

	Jan-16	Feb-16	Mar-16	Apr-16	May-16	Jun-16
Year-on-year % change, unadjusted	2,8	8,2	1,4	8,7	8,8	8,5
Month-on-month % change, seasonally adjusted	0,8	2,1	0,2	0,6	3,3	0,1
3-month % change, seasonally adjusted ¹	-0,2	0,6	2,1	2,9	3,3	3,7

¹ Percentage change between the previous 3 months and the 3 months ending in the month indicated.

Seasonally adjusted manufacturing sales increased by 0,1% in June 2016 compared with May 2016. This followed month-on-month changes of 3,3% in May 2016 and 0,6% in April 2016 – see Table C.

Table D – Seasonally adjusted manufacturing sales at current prices for the latest three months by division

Manufacturing division	Jan – Mar 2016 (R million)	Apr – Jun 2016 (R million)	% change between Jan – Mar 2016 and Apr – Jun 2016	Contribution (% points) to the total % change
Food and beverages	111 828	117 097	4,7	1,1
Textiles, clothing, leather and footwear	12 987	13 233	1,9	0,1
Wood and wood products, paper, publishing and printing	37 930	37 471	-1,2	-0,1
Petroleum, chemical products, rubber and plastic products	106 929	106 980	0,0	0,0
Glass and non-metallic mineral products	13 861	14 153	2,1	0,1
Basic iron and steel, non-ferrous metal products, metal products and machinery	99 318	103 755	4,5	0,9
Electrical machinery	15 236	15 145	-0,6	0,0
Radio, television and communication apparatus and professional equipment	5 413	5 555	2,6	0,0
Motor vehicles, parts and accessories and other transport equipment	62 857	69 714	10,9	1,4
Furniture and other manufacturing	14 322	15 219	6,3	0,2
Total	480 683	498 324	3,7	3,7

**PJ Lehohla
Statistician-General**

Tables

Table 1 – Index of the volume of manufacturing production (Base: 2010=100)

Month	2010	2011	2012	2013	2014	2015	2016 ¹
Jan	84,5	86,7	88,9	92,3	94,6	92,2	90,2
Feb	92,2	98,4	102,2	99,5	101,8	101,5	103,8
Mar	103,8	109,3	106,2	104,6	106,2	110,4	108,1
Apr	93,4	93,4	95,2	101,9	100,7	98,2	101,3
May	100,6	101,6	106,9	108,6	105,7	103,5	107,5
Jun	102,9	104,2	104,9	105,1	106,3	105,4	110,1
Jul	105,3	98,9	106,1	111,7	103,8	108,7	
Aug	101,6	107,8	110,0	110,6	108,0	108,0	
Sep	102,2	110,4	107,7	105,6	112,5	114,3	
Oct	110,3	112,9	116,7	118,6	120,6	118,2	
Nov	112,2	116,6	121,0	120,5	118,4	117,2	
Dec	91,0	93,5	95,2	98,5	100,0	100,5	
Total	100,0	102,8	105,1	106,5	106,6	106,5	

¹ The latest three months are preliminary.

Table 2 – Year-on-year percentage change in the volume of manufacturing production

Month	2011	2012	2013	2014	2015	2016	2016 year-to-date
Jan	2,6	2,5	3,8	2,5	-2,5	-2,2	-2,2
Feb	6,7	3,9	-2,6	2,3	-0,3	2,3	0,2
Mar	5,3	-2,8	-1,5	1,5	4,0	-2,1	-0,7
Apr	0,0	1,9	7,0	-1,2	-2,5	3,2	0,3
May	1,0	5,2	1,6	-2,7	-2,1	3,9	1,0
Jun	1,3	0,7	0,2	1,1	-0,8	4,5	1,6
Jul	-6,1	7,3	5,3	-7,1	4,7		
Aug	6,1	2,0	0,5	-2,4	0,0		
Sep	8,0	-2,4	-1,9	6,5	1,6		
Oct	2,4	3,4	1,6	1,7	-2,0		
Nov	3,9	3,8	-0,4	-1,7	-1,0		
Dec	2,7	1,8	3,5	1,5	0,5		
Total	2,8	2,2	1,3	0,1	-0,1		

Table 3 – Seasonally adjusted volume of manufacturing production

Month	Index (Base: 2010=100)				Month-on-month % change			
	2013	2014	2015	2016	2013	2014	2015	2016
Jan	105,9	108,2	106,6	105,6	-0,1	0,8	-0,7	-1,3
Feb	104,5	106,8	106,5	107,6	-1,3	-1,3	-0,1	1,9
Mar	105,1	104,9	108,9	107,1	0,6	-1,8	2,3	-0,5
Apr	107,7	108,9	105,7	107,7	2,5	3,8	-2,9	0,6
May	107,5	106,3	105,1	109,1	-0,2	-2,4	-0,6	1,3
Jun	106,6	107,3	105,4	109,9	-0,8	0,9	0,3	0,7
Jul	109,0	101,0	105,6		2,3	-5,9	0,2	
Aug	106,8	105,1	106,1		-2,0	4,1	0,5	
Sep	101,9	107,3	108,3		-4,6	2,1	2,1	
Oct	106,4	107,8	106,8		4,4	0,5	-1,4	
Nov	108,1	107,4	105,7		1,6	-0,4	-1,0	
Dec	107,3	107,3	107,0		-0,7	-0,1	1,2	

Table 4 – Index of the volume of manufacturing production by division and major group (Base: 2010=100)

Manufacturing division and major group	Weight (2013)	Jan-16	Feb-16	Mar-16	¹ Apr-16	¹ May-16	¹ Jun-16
Food and beverages	24,53	93,2	104,7	109,5	105,0	110,1	113,2
Meat, fish, fruit, etc.	5,99	98,1	105,2	123,0	114,3	117,6	122,5
Dairy products	1,81	112,0	115,9	123,0	112,4	103,0	101,0
Grain mill products	2,61	96,8	99,9	108,3	101,0	107,5	110,9
Other food products	7,78	76,7	96,0	91,2	99,0	105,5	115,7
Beverages	6,34	102,0	113,6	116,0	103,2	111,9	105,9
Textiles, clothing, leather and footwear	3,34	71,9	98,7	96,1	96,1	95,7	94,1
Textiles	0,89	67,6	95,6	95,6	89,6	89,6	89,2
Other textile products	0,36	69,9	96,6	89,5	97,1	100,7	94,3
Knitted, crocheted articles	0,09	42,7	56,7	57,6	59,8	59,1	51,5
Wearing apparel	1,13	62,4	99,1	91,3	90,3	93,0	90,5
Leather and leather products	0,50	107,4	116,3	113,8	120,9	118,9	128,3
Footwear	0,37	72,1	93,0	103,5	104,0	91,0	81,3
Wood and wood products, paper, publishing and printing	12,62	91,9	103,9	110,2	95,8	106,4	109,1
Sawmilling and planing of wood	1,81	107,2	138,2	141,2	134,6	151,6	142,9
Products of wood	2,47	86,5	108,3	110,8	100,9	105,7	106,5
Paper and paper products	4,96	101,4	99,0	113,3	92,6	100,1	109,7
Publishing	1,55	74,9	86,5	89,1	79,2	88,3	96,4
Printing, recorded media	1,83	72,3	91,8	88,1	73,4	95,1	88,4
Petroleum, chemical products, rubber and plastic products	23,58	103,1	106,9	112,2	105,4	111,7	115,3
Coke, petroleum products and nuclear fuel	9,01	107,3	97,2	113,1	107,1	105,6	104,7
Basic chemicals	4,08	107,6	110,0	111,6	101,3	119,8	132,8
Other chemical products	6,21	103,6	120,0	120,2	111,5	122,4	129,1
Rubber products	1,35	90,7	100,4	101,3	100,6	114,1	110,5
Plastic products	2,93	88,2	108,0	98,3	94,9	95,3	96,3
Glass and non-metallic mineral products	4,15	76,9	89,2	92,7	93,9	101,2	103,5
Glass and glass products	0,83	83,1	86,2	86,9	82,2	98,2	100,9
Non-metallic mineral products	3,32	75,3	89,9	94,1	96,8	101,9	104,2
Basic iron and steel, non-ferrous metal products, metal products and machinery	18,77	80,8	99,8	104,9	94,9	100,1	102,8
Basic iron and steel products	3,27	85,4	92,3	94,7	96,3	107,0	100,1
Non-ferrous metal products	3,11	89,8	97,7	98,8	93,5	95,2	96,7
Structural metal products	1,83	64,9	84,9	79,1	66,8	80,6	80,2
Other fabricated metal products	3,92	93,4	125,1	126,1	114,7	124,6	125,3
General purpose machinery	2,37	59,4	72,1	79,1	72,9	78,0	85,7
Special purpose machinery	3,44	76,4	106,5	128,7	103,5	97,2	111,4
Household appliances	0,83	84,9	101,3	99,8	90,1	93,6	94,0
Electrical machinery	1,67	85,4	109,0	125,3	104,4	106,4	114,5
Radio, television and communication apparatus and professional equipment	1,55	110,3	136,1	134,3	117,5	125,8	142,9
Radio, television and communication apparatus	0,90	128,0	155,4	142,8	129,0	140,9	168,3
Professional equipment	0,65	85,8	109,5	122,6	101,5	104,9	107,7
Motor vehicles, parts and accessories and other transport equipment	6,85	84,0	107,6	114,0	113,5	119,2	117,5
Motor vehicles	2,47	88,5	123,0	136,1	145,0	151,2	136,4
Bodies for motor vehicles, trailers and semi-trailers	0,44	85,4	112,5	106,2	109,9	114,7	118,7
Parts and accessories	2,78	81,4	100,2	96,1	98,8	103,6	93,0
Other transport equipment	1,16	80,1	91,0	113,1	83,5	90,6	135,7
Furniture and other manufacturing	2,94	61,0	94,5	71,6	78,8	90,0	85,0
Furniture	1,06	63,1	89,7	82,8	88,1	96,5	101,5
Other manufacturing groups	1,88	59,8	97,2	65,2	73,6	86,4	75,8
Total	100	90,2	103,8	108,1	101,3	107,5	110,1

¹ The latest three months are preliminary.

Table 5 – Year-on-year percentage change in the volume of manufacturing production by division and major group (Base: 2010=100)

Manufacturing division and major group	Jan-16	Feb-16	Mar-16	Apr-16	May-16	Jun-16
Food and beverages	-2,2	3,1	-1,3	0,2	1,9	2,0
Meat, fish, fruit, etc.	0,1	-1,8	-4,1	-1,2	0,6	2,9
Dairy products	-5,6	17,9	11,0	3,0	-1,6	-7,9
Grain mill products	2,3	7,3	-0,6	3,1	5,2	1,9
Other food products	5,2	4,6	-3,2	-2,5	-4,5	1,6
Beverages	-10,3	0,8	0,3	2,9	11,5	4,7
Textiles, clothing, leather and footwear	-1,5	-2,2	-9,5	1,1	-4,6	2,0
Textiles	5,8	3,6	-1,8	4,9	-4,0	7,3
Other textile products	-11,7	-2,3	-5,7	12,6	3,2	1,7
Knitted, crocheted articles	7,3	7,4	-4,3	11,2	-5,6	-2,1
Wearing apparel	-5,2	1,0	-17,5	-7,1	-2,9	0,3
Leather and leather products	0,0	-9,5	-12,1	-0,7	-9,7	-1,0
Footwear	-0,1	-12,3	-1,1	10,3	-9,1	2,1
Wood and wood products, paper, publishing and printing	5,0	7,1	4,5	3,3	7,3	4,4
Sawmilling and planing of wood	-1,6	7,0	4,5	13,8	14,8	5,8
Products of wood	5,5	12,2	1,7	1,3	3,9	-2,2
Paper and paper products	13,5	6,8	11,1	1,8	5,3	6,4
Publishing	-2,7	-0,9	-5,2	0,0	4,5	8,0
Printing, recorded media	-6,8	7,1	-3,0	-1,1	9,4	4,5
Petroleum, chemical products, rubber and plastic products	0,1	5,0	2,0	8,8	9,2	15,4
Coke, petroleum products and nuclear fuel	-4,1	1,1	13,6	20,3	14,8	24,2
Basic chemicals	6,0	13,2	-5,3	0,6	3,5	19,7
Other chemical products	0,9	4,1	-0,7	6,7	11,2	13,0
Rubber products	0,1	-1,8	-12,1	4,8	3,4	0,6
Plastic products	5,1	11,6	-6,4	-5,6	0,3	-1,6
Glass and non-metallic mineral products	2,3	-3,6	-4,6	-0,5	-0,9	2,2
Glass and glass products	4,8	-1,5	4,2	0,4	17,0	19,8
Non-metallic mineral products	1,5	-4,1	-6,5	-0,7	-4,4	-1,3
Basic iron and steel, non-ferrous metal products, metal products and machinery	-9,5	-2,8	-8,1	-2,3	1,1	0,3
Basic iron and steel products	-19,1	-5,7	-6,7	0,2	21,6	23,7
Non-ferrous metal products	-4,7	4,8	-3,8	-7,3	-1,4	-2,8
Structural metal products	6,4	-2,2	-12,5	-8,5	-3,2	-3,3
Other fabricated metal products	-2,2	1,3	-5,8	1,4	9,0	2,0
General purpose machinery	-11,5	-13,0	-7,4	-6,4	-8,7	0,2
Special purpose machinery	-11,7	-4,5	-9,6	3,6	-11,3	-8,2
Household appliances	-26,2	-11,4	-23,2	-15,5	-13,7	-19,3
Electrical machinery	8,1	8,5	8,4	16,1	2,9	-2,3
Radio, television and communication apparatus and professional equipment	37,4	17,0	3,8	12,5	3,5	8,9
Radio, television and communication apparatus	49,9	24,2	10,3	15,8	12,5	16,9
Professional equipment	17,1	5,2	-5,2	7,2	-10,0	-5,2
Motor vehicles, parts and accessories and other transport equipment	-10,4	-2,4	-6,4	10,2	3,2	-0,3
Motor vehicles	-25,6	-10,3	-6,0	15,7	2,3	-6,3
Bodies for motor vehicles, trailers and semi-trailers	7,8	-0,9	-17,4	-8,9	0,7	-5,7
Parts and accessories	0,5	8,2	-5,2	9,1	6,4	0,4
Other transport equipment	4,8	-3,3	-5,2	6,0	-0,4	16,6
Furniture and other manufacturing	-18,2	-2,0	-20,9	-3,5	-1,1	-11,0
Furniture	-12,7	-12,9	-17,4	-10,5	-5,6	-8,1
Other manufacturing groups	-21,2	4,9	-23,3	1,8	2,0	-13,1
Total	-2,2	2,3	-2,1	3,2	3,9	4,5

Table 6 – Contribution of each division and major group to the year-on-year percentage change in the volume of manufacturing production (percentage points)

Manufacturing division and major group	Weight (2013)	Jan-16	Feb-16	Mar-16	Apr-16	May-16	Jun-16
Food and beverages	24,53	-0,6	0,7	-0,3	0,0	0,5	0,5
Meat, fish, fruit, etc.	5,99	0,0	-0,1	-0,3	-0,1	0,0	0,2
Dairy products	1,81	-0,1	0,3	0,2	0,1	0,0	-0,1
Grain mill products	2,61	0,1	0,2	0,0	0,1	0,1	0,1
Other food products	7,78	0,3	0,3	-0,2	-0,2	-0,4	0,1
Beverages	6,34	-0,8	0,1	0,0	0,2	0,7	0,3
Textiles, clothing, leather and footwear	3,34	0,0	-0,1	-0,3	0,0	-0,1	0,1
Textiles	0,89	0,0	0,0	0,0	0,0	0,0	0,1
Other textile products	0,36	0,0	0,0	0,0	0,0	0,0	0,0
Knitted, crocheted articles	0,09	0,0	0,0	0,0	0,0	0,0	0,0
Wearing apparel	1,13	0,0	0,0	-0,2	-0,1	0,0	0,0
Leather and leather products	0,50	0,0	-0,1	-0,1	0,0	-0,1	0,0
Footwear	0,37	0,0	0,0	0,0	0,0	0,0	0,0
Wood and wood products, paper, publishing and printing	12,62	0,6	0,9	0,5	0,4	0,9	0,6
Sawmilling and planing of wood	1,81	0,0	0,2	0,1	0,3	0,3	0,1
Products of wood	2,47	0,1	0,3	0,0	0,0	0,1	-0,1
Paper and paper products	4,96	0,7	0,3	0,5	0,1	0,2	0,3
Publishing	1,55	0,0	0,0	-0,1	0,0	0,1	0,1
Printing, recorded media	1,83	-0,1	0,1	0,0	0,0	0,1	0,1
Petroleum, chemical products, rubber and plastic products	23,58	0,0	1,2	0,5	2,0	2,1	3,4
Coke, petroleum products and nuclear fuel	9,01	-0,4	0,1	1,1	1,7	1,2	1,7
Basic chemicals	4,08	0,3	0,5	-0,2	0,0	0,2	0,8
Other chemical products	6,21	0,1	0,3	-0,1	0,4	0,7	0,9
Rubber products	1,35	0,0	0,0	-0,2	0,1	0,0	0,0
Plastic products	2,93	0,1	0,3	-0,2	-0,2	0,0	0,0
Glass and non-metallic mineral products	4,15	0,1	-0,1	-0,2	0,0	0,0	0,1
Glass and glass products	0,83	0,0	0,0	0,0	0,0	0,1	0,1
Non-metallic mineral products	3,32	0,0	-0,1	-0,2	0,0	-0,2	0,0
Basic iron and steel, non-ferrous metal products, metal products and machinery	18,77	-1,7	-0,5	-1,6	-0,4	0,2	0,1
Basic iron and steel products	3,27	-0,7	-0,2	-0,2	0,0	0,6	0,6
Non-ferrous metal products	3,11	-0,1	0,1	-0,1	-0,2	0,0	-0,1
Structural metal products	1,83	0,1	0,0	-0,2	-0,1	0,0	0,0
Other fabricated metal products	3,92	-0,1	0,1	-0,3	0,1	0,4	0,1
General purpose machinery	2,37	-0,2	-0,3	-0,1	-0,1	-0,2	0,0
Special purpose machinery	3,44	-0,4	-0,2	-0,4	0,1	-0,4	-0,3
Household appliances	0,83	-0,3	-0,1	-0,2	-0,1	-0,1	-0,2
Electrical machinery	1,67	0,1	0,1	0,1	0,2	0,0	0,0
Radio, television and communication apparatus and professional equipment	1,55	0,5	0,3	0,1	0,2	0,1	0,2
Radio, television and communication apparatus	0,90	0,4	0,3	0,1	0,2	0,1	0,2
Professional equipment	0,65	0,1	0,0	0,0	0,0	-0,1	0,0
Motor vehicles, parts and accessories and other transport equipment	6,85	-0,7	-0,2	-0,5	0,7	0,2	0,0
Motor vehicles	2,47	-0,8	-0,3	-0,2	0,5	0,1	-0,2
Bodies for motor vehicles, trailers and semi-trailers	0,44	0,0	0,0	-0,1	0,0	0,0	0,0
Parts and accessories	2,78	0,0	0,2	-0,1	0,2	0,2	0,0
Other transport equipment	1,16	0,0	0,0	-0,1	0,1	0,0	0,2
Furniture and other manufacturing	2,94	-0,4	-0,1	-0,5	-0,1	0,0	-0,3
Furniture	1,06	-0,1	-0,1	-0,2	-0,1	-0,1	-0,1
Other manufacturing groups	1,88	-0,3	0,1	-0,3	0,0	0,0	-0,2
Total	100	-2,2	2,3	-2,1	3,2	3,9	4,5

Table 7 – Seasonally adjusted index of the volume of manufacturing production by division and major group (Base: 2010=100)

Manufacturing division and major group	Weight (2013)	Feb-16	Mar-16	Apr-16	May-16	Jun-16	Month-on-month % change
Food and beverages	24,53	114,0	111,3	114,6	114,1	114,0	-0,1
Meat, fish, fruit, etc.	5,99	116,5	117,3	117,4	118,7	121,8	2,6
Dairy products	1,81	116,7	122,8	116,6	114,0	113,4	-0,5
Grain mill products	2,61	108,0	106,5	105,9	106,7	106,4	-0,3
Other food products	7,78	112,6	101,8	105,1	103,9	105,2	1,3
Beverages	6,34	115,3	115,8	126,7	125,4	120,8	-3,7
Textiles, clothing, leather and footwear	3,34	96,0	93,9	95,1	95,3	96,3	1,0
Textiles	0,89	86,8	90,9	87,4	85,6	85,6	0,0
Other textile products	0,36	92,0	91,7	95,2	96,6	94,4	-2,3
Knitted, crocheted articles	0,09	51,3	54,2	53,9	52,7	52,8	0,2
Wearing apparel	1,13	100,6	92,0	90,5	95,7	95,6	-0,1
Leather and leather products	0,50	113,8	107,4	121,5	117,2	124,0	5,8
Footwear	0,37	95,3	100,3	102,1	96,9	99,0	2,2
Wood and wood products, paper, publishing and printing	12,62	108,2	110,5	104,0	109,4	109,0	-0,4
Sawmilling and planing of wood	1,81	132,2	134,7	137,5	148,8	137,6	-7,5
Products of wood	2,47	111,3	109,6	105,1	107,2	105,1	-2,0
Paper and paper products	4,96	107,0	112,9	98,9	104,1	107,0	2,8
Publishing	1,55	94,6	94,4	95,4	97,8	101,6	3,9
Printing, recorded media	1,83	95,2	94,8	90,2	97,4	97,7	0,3
Petroleum, chemical products, rubber and plastic products	23,58	110,8	111,4	112,1	114,5	118,0	3,1
Coke, petroleum products and nuclear fuel	9,01	105,1	110,7	111,0	107,7	109,5	1,7
Basic chemicals	4,08	116,2	114,1	113,7	121,4	136,8	12,7
Other chemical products	6,21	121,2	119,4	121,4	127,8	129,2	1,1
Rubber products	1,35	95,7	95,3	100,8	108,1	106,6	-1,4
Plastic products	2,93	106,1	100,1	98,8	100,3	99,1	-1,2
Glass and non-metallic mineral products	4,15	95,2	94,8	97,4	97,9	97,9	0,0
Glass and glass products	0,83	94,5	99,0	94,7	106,2	103,6	-2,4
Non-metallic mineral products	3,32	95,4	93,7	98,1	95,9	96,5	0,6
Basic iron and steel, non-ferrous metal products, metal products and machinery	18,77	100,1	98,5	97,9	99,1	100,2	1,1
Basic iron and steel products	3,27	94,0	91,0	93,0	96,5	99,7	3,3
Non-ferrous metal products	3,11	95,5	93,3	94,4	94,3	96,6	2,4
Structural metal products	1,83	79,8	79,1	71,6	79,5	78,0	-1,9
Other fabricated metal products	3,92	123,5	121,9	121,5	124,7	121,6	-2,5
General purpose machinery	2,37	76,6	79,4	76,8	77,6	82,0	5,7
Special purpose machinery	3,44	111,4	109,4	108,9	103,8	106,2	2,3
Household appliances	0,83	96,5	89,4	91,2	91,3	90,2	-1,2
Electrical machinery	1,67	111,0	112,6	111,9	106,8	107,2	0,4
Radio, television and communication apparatus and professional equipment	1,55	134,5	137,4	132,3	138,0	144,5	4,7
Radio, television and communication apparatus	0,90	152,9	159,0	150,7	161,7	175,0	8,2
Professional equipment	0,65	109,1	107,5	106,8	105,3	102,4	-2,8
Motor vehicles, parts and accessories and other transport equipment	6,85	106,7	111,5	116,7	115,0	114,0	-0,9
Motor vehicles	2,47	125,8	136,0	150,8	145,4	134,1	-7,8
Bodies for motor vehicles, trailers and semi-trailers	0,44	111,5	109,2	107,5	108,6	108,9	0,3
Parts and accessories	2,78	92,7	95,5	94,1	96,8	94,9	-2,0
Other transport equipment	1,16	98,1	99,0	102,0	96,3	119,1	23,7
Furniture and other manufacturing	2,94	91,7	80,5	84,5	91,8	82,0	-10,7
Furniture	1,06	97,6	91,2	96,7	97,1	99,1	2,1
Other manufacturing groups	1,88	88,4	74,6	77,6	88,8	72,5	-18,4
Total	100	107,6	107,1	107,7	109,1	109,9	0,7

Table 8 – Manufacturing sales at current prices (R million)

Month	2010	2011	2012	2013	2014	2015	2016 ¹
Jan	90 215	95 994	107 218	116 532	130 303	129 333	133 005
Feb	101 983	111 651	125 750	131 788	146 300	143 332	155 106
Mar	115 516	126 331	133 374	137 740	151 487	161 661	163 872
Apr	101 853	108 005	117 453	133 321	143 553	142 263	154 642
May	109 489	117 657	130 302	141 196	148 043	153 030	166 569
Jun	113 772	122 233	130 849	139 275	155 933	157 801	171 253
Jul	113 046	113 051	127 702	146 362	145 849	158 167	
Aug	110 779	125 128	134 503	143 958	156 037	156 112	
Sep	113 369	133 135	131 890	140 221	162 333	166 634	
Oct	121 878	133 901	144 549	156 327	175 379	172 704	
Nov	126 703	139 235	153 267	162 140	170 409	173 476	
Dec	104 635	117 662	123 569	140 451	148 058	150 789	
Total	1 323 238	1 443 983	1 560 426	1 689 311	1 833 684	1 865 302	

¹ The latest three months are preliminary.

Table 9 – Year-on-year percentage change in manufacturing sales at current prices

Month	2011	2012	2013	2014	2015	2016	2016 year-to-date
Jan	6,4	11,7	8,7	11,8	-0,7	2,8	2,8
Feb	9,5	12,6	4,8	11,0	-2,0	8,2	5,7
Mar	9,4	5,6	3,3	10,0	6,7	1,4	4,1
Apr	6,0	8,7	13,5	7,7	-0,9	8,7	5,2
May	7,5	10,7	8,4	4,8	3,4	8,8	6,0
Jun	7,4	7,0	6,4	12,0	1,2	8,5	6,4
Jul	0,0	13,0	14,6	-0,4	8,4		
Aug	13,0	7,5	7,0	8,4	0,0		
Sep	17,4	-0,9	6,3	15,8	2,6		
Oct	9,9	8,0	8,1	12,2	-1,5		
Nov	9,9	10,1	5,8	5,1	1,8		
Dec	12,4	5,0	13,7	5,4	1,8		
Total	9,1	8,1	8,3	8,5	1,7		

Table 10 – Seasonally adjusted manufacturing sales at current prices

Month	R million				Month-on-month % change			
	2013	2014	2015	2016	2013	2014	2015	2016
Jan	135 671	150 549	151 938	157 948	1,4	0,8	-2,3	0,8
Feb	137 458	153 001	149 942	161 238	1,3	1,6	-1,3	2,1
Mar	137 906	147 783	156 638	161 497	0,3	-3,4	4,5	0,2
Apr	138 719	154 152	152 637	162 461	0,6	4,3	-2,6	0,6
May	139 931	148 512	154 953	167 864	0,9	-3,7	1,5	3,3
Jun	139 311	154 256	154 891	167 999	-0,4	3,9	0,0	0,1
Jul	144 937	144 453	155 917		4,0	-6,4	0,7	
Aug	141 619	155 053	156 024		-2,3	7,3	0,1	
Sep	135 320	155 174	158 845		-4,4	0,1	1,8	
Oct	141 609	158 225	157 450		4,6	2,0	-0,9	
Nov	146 041	155 678	156 686		3,1	-1,6	-0,5	
Dec	149 357	155 578	156 763		2,3	-0,1	0,0	

Table 11 – Manufacturing sales at current prices by division and major group (R million)

Manufacturing division and major group	Jan-16	Feb-16	Mar-16	¹ Apr-16	¹ May-16	¹ Jun-16
Food and beverages	32 252	34 104	38 463	35 663	37 376	38 537
Meat, fish, fruit, etc.	8 448	9 050	10 918	9 847	10 408	10 772
Dairy products	3 089	3 241	3 533	3 272	3 246	3 234
Grain mill products	5 652	5 745	6 613	6 127	6 759	6 906
Other food products	6 705	6 411	6 549	7 581	7 536	8 064
Beverages	8 358	9 656	10 850	8 837	9 426	9 561
Textiles, clothing, leather and footwear	3 168	4 288	4 393	4 457	4 470	4 413
Textiles	482	679	719	663	690	642
Other textile products	912	1 237	1 174	1 283	1 332	1 258
Knitted, crocheted articles	148	210	226	233	238	211
Wearing apparel	768	1 157	1 229	1 213	1 218	1 199
Leather and leather products	519	622	593	616	594	644
Footwear	339	383	453	449	398	459
Wood and wood products, paper, publishing and printing	10 604	12 062	12 682	10 888	12 006	12 917
Sawmilling and planing of wood	745	964	976	1 011	1 055	933
Products of wood	1 367	1 662	1 795	1 650	1 629	1 672
Paper and paper products	5 360	5 453	6 147	5 051	5 500	6 279
Publishing	1 354	1 619	1 541	1 384	1 581	1 769
Printing, recorded media	1 778	2 365	2 223	1 792	2 240	2 264
Petroleum, chemical products, rubber and plastic products	31 905	33 279	34 415	33 081	36 286	36 861
Coke, petroleum products and nuclear fuel	11 267	9 416	10 989	10 882	12 606	12 466
Basic chemicals	6 901	7 489	7 055	6 776	7 144	7 588
Other chemical products	7 994	9 405	9 711	8 792	9 800	10 108
Rubber products	1 101	1 407	1 426	1 422	1 475	1 543
Plastic products	4 642	5 561	5 234	5 208	5 261	5 157
Glass and non-metallic mineral products	3 522	4 416	4 486	4 465	4 860	4 879
Glass and glass products	633	684	674	660	814	822
Non-metallic mineral products	2 889	3 732	3 812	3 805	4 046	4 057
Basic iron and steel, non-ferrous metal products, metal products and machinery	26 933	33 789	34 362	32 616	35 485	37 136
Basic iron and steel products	8 098	9 039	8 828	9 200	10 190	10 853
Non-ferrous metal products	6 977	8 194	8 046	7 909	8 942	9 004
Structural metal products	2 136	3 004	2 794	2 448	2 819	2 877
Other fabricated metal products	4 134	5 605	5 643	5 298	5 756	5 808
General purpose machinery	1 967	2 644	2 818	2 663	2 814	3 166
Special purpose machinery	2 895	4 362	5 266	4 237	4 070	4 445
Household appliances	726	941	967	861	895	984
Electrical machinery	3 721	5 154	6 014	4 613	4 726	5 433
Radio, television and communication apparatus and professional equipment	1 435	1 760	1 775	1 527	1 712	1 918
Radio, television and communication apparatus	874	1 001	981	851	975	1 162
Professional equipment	561	760	794	677	737	756
Motor vehicles, parts and accessories and other transport equipment	16 021	21 290	22 739	22 550	23 863	24 627
Motor vehicles	7 841	11 227	11 876	12 123	12 895	12 387
Bodies for motor vehicles, trailers and semi-trailers	572	803	773	819	857	886
Parts and accessories	5 496	6 841	7 059	7 354	7 655	7 659
Other transport equipment	2 112	2 420	3 031	2 254	2 455	3 696
Furniture and other manufacturing	3 443	4 964	4 544	4 781	5 786	4 531
Furniture	697	1 018	949	1 029	1 127	1 175
Other manufacturing groups	2 746	3 946	3 595	3 752	4 659	3 356
Total	133 005	155 106	163 872	154 642	166 569	171 253

¹ The latest three months are preliminary.

Table 12 – Year-on-year percentage change in manufacturing sales at current prices by division and major group

Manufacturing division and major group	Jan-16	Feb-16	Mar-16	Apr-16	May-16	Jun-16
Food and beverages	8,1	11,1	11,9	11,1	14,1	14,6
Meat, fish, fruit, etc.	11,8	12,4	10,3	12,2	14,2	14,3
Dairy products	-0,8	18,9	9,3	7,4	4,1	4,0
Grain mill products	18,9	21,8	17,0	20,0	24,8	21,0
Other food products	17,1	1,9	11,1	11,4	14,0	20,1
Beverages	-3,9	8,5	11,7	5,8	10,8	10,1
Textiles, clothing, leather and footwear	3,6	7,8	-1,1	7,1	4,6	7,3
Textiles	7,6	15,1	9,9	11,1	13,3	7,9
Other textile products	-1,3	6,3	-4,6	10,6	5,5	5,4
Knitted, crocheted articles	2,1	11,7	9,7	11,0	9,2	14,7
Wearing apparel	-1,8	7,5	-6,8	-1,9	1,1	11,5
Leather and leather products	5,3	1,6	1,7	6,9	-1,2	0,8
Footwear	27,9	9,7	0,9	17,5	5,6	8,0
Wood and wood products, paper, publishing and printing	11,7	10,8	5,7	5,4	10,6	8,6
Sawmilling and planing of wood	3,5	5,5	11,9	20,6	13,1	-0,2
Products of wood	9,9	13,3	5,9	6,9	4,4	-0,9
Paper and paper products	21,9	10,6	8,8	6,5	11,4	10,4
Publishing	4,8	7,2	-2,2	1,3	10,8	15,9
Printing, recorded media	-3,5	14,6	1,0	-2,8	12,4	10,0
Petroleum, chemical products, rubber and plastic products	1,2	5,6	-5,6	-4,0	-3,0	0,6
Coke, petroleum products and nuclear fuel	-9,8	-16,4	-16,9	-20,4	-18,9	-13,8
Basic chemicals	5,3	25,1	-2,4	1,6	-3,6	6,5
Other chemical products	11,5	16,4	4,7	11,2	17,1	15,3
Rubber products	4,1	5,2	-6,1	12,5	9,0	11,7
Plastic products	8,9	14,6	0,5	5,3	11,0	5,4
Glass and non-metallic mineral products	4,9	2,5	-3,4	5,4	5,6	1,6
Glass and glass products	5,9	-0,7	3,5	0,8	21,9	5,5
Non-metallic mineral products	4,7	3,1	-4,5	6,3	2,8	0,8
Basic iron and steel, non-ferrous metal products, metal products and machinery	-2,0	5,5	-6,3	10,8	8,7	10,3
Basic iron and steel products	-15,0	-1,2	-20,0	12,7	7,8	16,0
Non-ferrous metal products	13,7	18,5	9,0	18,6	26,9	26,6
Structural metal products	7,8	2,0	-13,0	-1,1	-3,8	-2,5
Other fabricated metal products	3,5	9,3	-3,3	4,9	8,5	6,0
General purpose machinery	-11,1	-5,5	-1,8	4,3	-3,2	0,5
Special purpose machinery	-1,1	5,9	-0,4	12,5	-2,2	-4,5
Household appliances	4,3	-3,7	-7,3	12,8	8,1	1,2
Electrical machinery	7,6	10,4	17,3	21,7	10,9	3,6
Radio, television and communication apparatus and professional equipment	33,4	19,3	5,2	14,4	13,5	17,5
Radio, television and communication apparatus	56,9	21,6	7,3	21,1	23,4	25,6
Professional equipment	8,1	16,6	2,7	7,0	2,5	6,8
Motor vehicles, parts and accessories and other transport equipment	-2,3	12,0	5,0	27,3	18,6	14,2
Motor vehicles	-8,2	13,8	4,7	35,2	18,7	7,8
Bodies for motor vehicles, trailers and semi-trailers	8,7	1,6	-11,8	0,0	8,6	11,4
Parts and accessories	0,7	13,2	9,5	25,5	24,4	21,4
Other transport equipment	12,8	4,6	1,5	9,0	6,1	24,4
Furniture and other manufacturing	-5,3	4,1	-1,6	1,5	25,5	-1,8
Furniture	-8,4	-6,1	-12,3	-3,9	-2,9	-0,5
Other manufacturing groups	-4,5	7,1	1,7	3,0	35,1	-2,2
Total	2,8	8,2	1,4	8,7	8,8	8,5

Table 13 – Contribution of each division and major group to the year-on-year percentage change in manufacturing sales at current prices (percentage points)

Manufacturing division and major group	Jan-16	Feb-16	Mar-16	Apr-16	May-16	Jun-16
Food and beverages	1,9	2,4	2,5	2,5	3,0	3,1
Meat, fish, fruit, etc.	0,7	0,7	0,6	0,8	0,8	0,9
Dairy products	0,0	0,4	0,2	0,2	0,1	0,1
Grain mill products	0,7	0,7	0,6	0,7	0,9	0,8
Other food products	0,8	0,1	0,4	0,5	0,6	0,9
Beverages	-0,3	0,5	0,7	0,3	0,6	0,6
Textiles, clothing, leather and footwear	0,1	0,2	0,0	0,2	0,1	0,2
Textiles	0,0	0,1	0,0	0,0	0,1	0,0
Other textile products	0,0	0,1	0,0	0,1	0,0	0,0
Knitted, crocheted articles	0,0	0,0	0,0	0,0	0,0	0,0
Wearing apparel	0,0	0,1	-0,1	0,0	0,0	0,1
Leather and leather products	0,0	0,0	0,0	0,0	0,0	0,0
Footwear	0,1	0,0	0,0	0,0	0,0	0,0
Wood and wood products, paper, publishing and printing	0,9	0,8	0,4	0,4	0,8	0,6
Sawmilling and planing of wood	0,0	0,0	0,1	0,1	0,1	0,0
Products of wood	0,1	0,1	0,1	0,1	0,0	0,0
Paper and paper products	0,7	0,4	0,3	0,2	0,4	0,4
Publishing	0,0	0,1	0,0	0,0	0,1	0,2
Printing, recorded media	0,0	0,2	0,0	0,0	0,2	0,1
Petroleum, chemical products, rubber and plastic products	0,3	1,2	-1,3	-1,0	-0,7	0,1
Coke, petroleum products and nuclear fuel	-0,9	-1,3	-1,4	-2,0	-1,9	-1,3
Basic chemicals	0,3	1,0	-0,1	0,1	-0,2	0,3
Other chemical products	0,6	0,9	0,3	0,6	0,9	0,8
Rubber products	0,0	0,0	-0,1	0,1	0,1	0,1
Plastic products	0,3	0,5	0,0	0,2	0,3	0,2
Glass and non-metallic mineral products	0,1	0,1	-0,1	0,2	0,2	0,0
Glass and glass products	0,0	0,0	0,0	0,0	0,1	0,0
Non-metallic mineral products	0,1	0,1	-0,1	0,2	0,1	0,0
Basic iron and steel, non-ferrous metal products, metal products and machinery	-0,4	1,2	-1,4	2,2	1,9	2,2
Basic iron and steel products	-1,1	-0,1	-1,4	0,7	0,5	0,9
Non-ferrous metal products	0,7	0,9	0,4	0,9	1,2	1,2
Structural metal products	0,1	0,0	-0,3	0,0	-0,1	0,0
Other fabricated metal products	0,1	0,3	-0,1	0,2	0,3	0,2
General purpose machinery	-0,2	-0,1	0,0	0,1	-0,1	0,0
Special purpose machinery	0,0	0,2	0,0	0,3	-0,1	-0,1
Household appliances	0,0	0,0	0,0	0,1	0,0	0,0
Electrical machinery	0,2	0,3	0,5	0,6	0,3	0,1
Radio, television and communication apparatus and professional equipment	0,3	0,2	0,1	0,1	0,1	0,2
Radio, television and communication apparatus	0,2	0,1	0,0	0,1	0,1	0,2
Professional equipment	0,0	0,1	0,0	0,0	0,0	0,0
Motor vehicles, parts and accessories and other transport equipment	-0,3	1,6	0,7	3,4	2,4	1,9
Motor vehicles	-0,5	0,9	0,3	2,2	1,3	0,6
Bodies for motor vehicles, trailers and semi-trailers	0,0	0,0	-0,1	0,0	0,0	0,1
Parts and accessories	0,0	0,6	0,4	1,1	1,0	0,9
Other transport equipment	0,2	0,1	0,0	0,1	0,1	0,5
Furniture and other manufacturing	-0,1	0,1	0,0	0,0	0,8	-0,1
Furniture	0,0	0,0	-0,1	0,0	0,0	0,0
Other manufacturing groups	-0,1	0,2	0,0	0,1	0,8	0,0
Total	2,8	8,2	1,4	8,7	8,8	8,5

Table 14 – Seasonally adjusted manufacturing sales at current prices by division and major group (R million)

Manufacturing division and major group	Feb-16	Mar-16	Apr-16	May-16	Jun-16	Month-on-month % change
Food and beverages	37 025	37 851	38 409	38 941	39 747	2,1
Meat, fish, fruit, etc.	10 199	10 491	10 384	10 472	10 751	2,7
Dairy products	3 367	3 410	3 360	3 399	3 454	1,6
Grain mill products	6 291	6 377	6 386	6 601	6 658	0,9
Other food products	7 033	7 176	7 486	7 712	8 108	5,1
Beverages	10 136	10 397	10 794	10 756	10 776	0,2
Textiles, clothing, leather and footwear	4 286	4 329	4 344	4 439	4 450	0,2
Textiles	611	675	628	656	636	-3,0
Other textile products	1 210	1 171	1 236	1 281	1 259	-1,7
Knitted, crocheted articles	206	209	203	214	210	-1,9
Wearing apparel	1 224	1 224	1 219	1 254	1 271	1,4
Leather and leather products	590	592	603	591	611	3,4
Footwear	445	457	455	443	463	4,5
Wood and wood products, paper, publishing and printing	12 615	12 627	12 070	12 581	12 820	1,9
Sawmilling and planing of wood	963	957	1 025	1 038	909	-12,4
Products of wood	1 733	1 735	1 705	1 677	1 642	-2,1
Paper and paper products	5 833	5 975	5 544	5 736	5 984	4,3
Publishing	1 695	1 640	1 622	1 731	1 833	5,9
Printing, recorded media	2 391	2 319	2 174	2 399	2 453	2,3
Petroleum, chemical products, rubber and plastic products	36 038	35 085	34 419	36 359	36 202	-0,4
Coke, petroleum products and nuclear fuel	11 090	11 424	10 967	11 801	11 747	-0,5
Basic chemicals	8 207	7 375	7 301	7 440	7 536	1,3
Other chemical products	9 795	9 535	9 293	10 147	10 061	-0,8
Rubber products	1 361	1 383	1 427	1 462	1 491	2,0
Plastic products	5 586	5 368	5 431	5 510	5 368	-2,6
Glass and non-metallic mineral products	4 615	4 581	4 664	4 820	4 669	-3,1
Glass and glass products	759	785	790	902	813	-9,9
Non-metallic mineral products	3 855	3 796	3 874	3 918	3 856	-1,6
Basic iron and steel, non-ferrous metal products, metal products and machinery	33 495	33 343	33 825	34 758	35 172	1,2
Basic iron and steel products	8 980	8 905	9 231	9 598	10 003	4,2
Non-ferrous metal products	8 170	8 137	8 294	8 800	8 730	-0,8
Structural metal products	2 805	2 705	2 681	2 788	2 745	-1,5
Other fabricated metal products	5 462	5 535	5 413	5 657	5 597	-1,1
General purpose machinery	2 778	2 834	2 820	2 793	2 897	3,7
Special purpose machinery	4 384	4 339	4 500	4 229	4 266	0,9
Household appliances	916	886	886	892	935	4,8
Electrical machinery	5 021	5 258	5 123	4 929	5 093	3,3
Radio, television and communication apparatus and professional equipment	1 804	1 761	1 760	1 872	1 923	2,7
Radio, television and communication apparatus	1 022	1 027	1 052	1 158	1 206	4,1
Professional equipment	782	733	707	714	717	0,4
Motor vehicles, parts and accessories and other transport equipment	21 414	21 937	23 075	23 215	23 424	0,9
Motor vehicles	11 342	11 537	12 454	12 493	12 046	-3,6
Bodies for motor vehicles, trailers and semi-trailers	793	805	789	835	826	-1,1
Parts and accessories	6 701	6 975	7 142	7 336	7 330	-0,1
Other transport equipment	2 578	2 621	2 689	2 552	3 222	26,3
Furniture and other manufacturing	4 924	4 724	4 772	5 949	4 498	-24,4
Furniture	1 117	1 070	1 112	1 128	1 152	2,1
Other manufacturing groups	3 807	3 654	3 659	4 821	3 346	-30,6
Total	161 238	161 497	162 461	167 864	167 999	0,1

Survey information

- Introduction**
- 1 Statistics South Africa (Stats SA) conducts a monthly survey of the manufacturing industry, covering manufacturing enterprises. This statistical release contains the results of a sample drawn from the business sampling frame (BSF), with enhanced coverage of South African businesses (see 4). The release contains monthly indices of the volume of manufacturing production and monthly value of sales of manufactured products by division and major group.
 - 2 In accordance with international practice, the indices are usually re-based every five years to a new base year. The current base period of the index is 2010. Both estimated and seasonally adjusted figures are presented.
 - 3 In order to improve timeliness, some information for the latest month had to be estimated due to late response. These estimates will be revised in future statistical releases as soon as information becomes available.
 - 4 Stats SA is continuously updating its BSF, based on units registered for value added tax (VAT) and income tax (IT) obtained from the South African Revenue Service (SARS).
- Purpose of the survey**
- 5 The results of the monthly manufacturing production and sales survey are used to calculate the volume of manufacturing production indices in order to estimate the gross domestic product (GDP) and its components, which in turn are used to develop and monitor government policy. These indices provide an indicator of the real level of manufacturing activity in the economy.
- Special Data Dissemination Standard of the IMF**
- 6 The data in this statistical release adhere to the Special Data Dissemination Standard (SDDS) of the International Monetary Fund (IMF), which sets out standards on coverage, periodicity and timeliness of data, access by the public, integrity, and quality of the disseminated data.
- Scope of the survey**
- 7 This survey covers manufacturing enterprises, i.e. those conducting activities in -
 - the manufacturing, processing, making or packing of products;
 - the slaughtering of animals, including poultry; and
 - installation, assembly, completion, repair and related work.
- Classification**
- 8 The 1993 edition of the *Standard Industrial Classification of all Economic Activities (SIC)*, Fifth Edition, Report No. 09-90-02, was used to classify the statistical units in the survey. The SIC is based on the 1990 *International Standard Industrial Classification of all Economic Activities (ISIC)* with suitable adaptations for local conditions. Each enterprise is classified to an industry which reflects its predominant activity. Statistics in this publication are presented at SIC division (two digit) and major group (three digit) level.
- Collection rate**
- 9 The preliminary collection rate for the survey on manufacturing production and sales for June 2016 was 89,0%. The improved collection rate for May 2016 was 91,5%.
- Statistical unit**
- 10 The statistical unit for which information is compiled and published is an enterprise, defined as a legal unit or a combination of legal units that includes and directly controls all functions necessary to carry out its production activities. The statistical units are derived from and linked to the South African Revenue Service (SARS) administrative data.
- Revised figures**
- 11 Revised figures are mainly due to late submission of data to Stats SA, or respondents reporting revisions or corrections to their figures. Preliminary figures, as indicated in the relevant tables, are subject to change and when revised will not be indicated as such.

- Related publications** 12 Users may also wish to refer to *Stats in Brief* available from Stats SA.
- Rounding-off of figures** 13 Where necessary, the figures in the tables have been rounded off to the nearest digit shown. There may, therefore, be slight discrepancies between the sums of the constituent items and the totals shown.
- Historical data** 14 Historical manufacturing data are available on the Stats SA webpage. Click on the following link ([Time series data](#)) to access the data electronically.
- Past publications** 15 Past manufacturing releases are available on the Stats SA webpage. Click on the following link ([Past publications](#)) to access the releases electronically.

Technical notes

Survey methodology and design

- 1 The survey is conducted monthly. Questionnaires are sent to a sample of 3 027 enterprises from a population of 45 285 manufacturing enterprises. Completed questionnaires are required to be returned to Stats SA within 10 days after the end of the reference month. Fax and telephone reminders are used to follow up on non-respondents.
- 2 A stratified random sample was drawn at the Standard Industrial Classification (SIC) three-digit level in April 2015 from Stats SA’s business sampling frame (BSF). Strata were formed using a combination of the SIC and the measure of size classes for enterprises (see point 3 below).

The Neyman optimal allocation formula used to allocate samples to each stratum is given by a formula below:

$$n_h = \frac{N_h S_h}{\sum N_h S_h}$$

N_h and S_h are the stratum population size and the stratum variance respectively.

Class limits

- 3 Each manufacturing major group is divided into four size groups. All large enterprises (size group one) are completely enumerated. Simple random sampling is applied to medium (size group two) and to small (size group three and four) enterprises. The total value of sales of manufactured products of large enterprises (size group one) in a major group is added to the weighted totals of size group two, three and four of that major group to reflect the total value of sales of the major group.

Measure of size classes (Rand)

Enterprise size	Size group	Lower limits	Upper limits
Very small	4	1 882 214	15 000 000
Small	3	15 000 001	39 000 000
Medium	2	39 000 001	153 000 000
Large	1	153 000 001	

Sample weighting

- 4 For those strata not completely enumerated, the weights to produce estimates are the inverse ratio of the sampling fraction, modified to take account of non-response in the survey. Stratum estimates are calculated and then aggregated with the completely enumerated stratum to form major group and division estimates. These procedures are consistent with international best practice.

Index of the volume of manufacturing production

- 5 The index of the volume of manufacturing production, also known as a production index, is a statistical measure of the change in the volume of production. The production index of a major group is the ratio between the volume of production of a major group in a given period and the volume of production of the same major group in the base period. The current base period is 2010. The production in the base period is set at 100.

Calculation of production index

- 6 The calculation of the monthly production indices is based on the value of sales of products and articles manufactured and change in monthly value of stocks of manufactured products, after the effect of price changes has been eliminated through deflation using appropriate indices of the production price index (PPI). For 38 of the 44 major groups in manufacturing, the value of production is calculated from the value of sales and stocks of manufactured products obtained from the monthly survey of manufacturing enterprises.
- 7 More direct indicators are used for the value of production of the following major groups:
 - tobacco;
 - coke and refined petroleum products;
 - basic iron and steel products;
 - basic precious and non-ferrous metal products;
 - motor vehicles; and
 - parts and accessories for motor vehicles.

The volume indices for these major groups are calculated on the basis of quantities. This method is used by the national statistical agencies of many other countries for petroleum products as the results are considered more satisfactory (mainly because these commodities are relatively homogeneous).

Index weighting

- 8 For indices, a weight is calculated for every major group according to the value added of the major group (i.e. output of a major group minus intermediate consumption) relative to the total value added of the manufacturing industry as a whole, based on the results of the most recent census of manufacturing, large sample survey (LSS) of the manufacturing industry or national accounts (NA) value added data. The production indices of all divisions are multiplied by the applicable weights and aggregated to produce the index for the total volume of manufacturing production. Weights between census/LSS/NA years are fixed. The table below reflects the period and the census/LSS/NA which were used as base year for the given period.

Period	Source
1998 to 2000	1996 Census of Manufacturing
2001 to 2004	2001 LSS
2005 to 2009	2005 LSS
2010 to 2016	NA

- 9 The weights reflect the importance of the major group/division to the total manufacturing industry. The weights change over time due to changes in the relative performance of industries, due to factors such as quality changes, changes in relative prices, and changes in customer preferences. New weights need to be calculated from time to time.

Table G – Weights by division and major group

Manufacturing divisions and major groups	Weights according to national accounts value added		
	2011	2012	2013 – 2016
Food and beverages	23,82	24,44	24,53
Meat, fish, fruit, etc.	5,19	5,39	5,99
Dairy products	2,30	1,78	1,81
Grain mill products	2,78	2,86	2,61
Other food products	7,12	7,73	7,78
Beverages	6,43	6,68	6,34
Textiles, clothing, leather and footwear	2,92	3,17	3,34
Textiles	0,84	0,74	0,89
Other textile products	0,39	0,47	0,36
Knitted, crocheted articles	0,08	0,10	0,09
Wearing apparel	0,99	1,19	1,13
Leather and leather products	0,19	0,28	0,50
Footwear	0,43	0,39	0,37
Wood and wood products, paper, publishing and printing	9,46	12,65	12,62
Sawmilling and planing of wood	0,82	1,83	1,81
Products of wood	1,76	2,55	2,47
Paper and paper products	3,26	4,89	4,96
Publishing	1,45	1,51	1,55
Printing, recorded media	2,17	1,87	1,83
Petroleum, chemical products, rubber and plastic products	22,52	22,13	23,58
Coke, petroleum products and nuclear fuel	6,32	7,77	9,01
Basic chemicals	4,85	3,81	4,08
Other chemical products	7,06	6,49	6,21
Rubber products	1,18	1,00	1,35
Plastic products	3,11	3,06	2,93
Glass and non-metallic mineral products	4,42	3,91	4,15
Glass and glass products	0,89	0,78	0,83
Non-metallic mineral products	3,53	3,13	3,32
Basic iron and steel, non-ferrous metal products, metal products and machinery	20,40	19,59	18,77
Basic iron and steel products	4,71	3,38	3,27
Non-ferrous metal products (including precious metals)	3,46	3,18	3,11
Structural metal products	2,21	1,89	1,83
Other fabricated metal products	3,89	4,40	3,92
General purpose machinery	2,44	2,44	2,37
Special purpose machinery	3,04	3,44	3,44
Household appliances	0,65	0,86	0,83
Electrical machinery	2,37	1,70	1,67
Radio, television and communication apparatus and professional equipment	1,45	1,41	1,55
Radio, television and communication apparatus	0,88	0,90	0,90
Professional equipment	0,57	0,51	0,65
Motor vehicles, parts and accessories and other transport equipment	8,58	7,39	6,85
Motor vehicles	3,84	2,98	2,47
Bodies for motor vehicles, trailers and semi-trailers	0,53	0,43	0,44
Parts and accessories	3,00	2,77	2,78
Other transport equipment	1,21	1,21	1,16
Furniture and other manufacturing	4,06	3,61	2,94
Furniture	1,05	1,08	1,06
Other manufacturing groups	3,01	2,53	1,88
Total	100	100	100

- Seasonal adjustment** **10** Seasonally adjusted estimates of all major groups are generated each month, using the X-12 Seasonal Adjustment Program developed by the US Bureau of the Census, 1968. Seasonal adjustment is a means of removing the estimated effects of normal seasonal variation from the series so that the effects of other influences on the series can be more clearly recognised. Seasonal adjustment does not aim to remove irregular or non-seasonal influences, which may be present in any particular month. Influences that are volatile or unsystematic can still make it difficult to interpret the movement of the series even after adjustment for seasonal variations. Therefore the month-to-month movements of seasonally adjusted estimates may not be reliable indicators of trend behaviour. The X-12-ARIMA procedure for manufacturing production and sales is described in more detail on the Stats SA website: [Click to Download Seasonal adjustment Manufacturing March 2016](#)
- Trend cycle** **11** The trend is the long-term pattern or movement of a time series. The X-12 Seasonal Adjustment Programme is used for smoothing seasonally adjusted estimates to estimates of the underlying trend.
- Reliability of estimates** **12** Data presented in this publication are based on information obtained from a sample and are, therefore, subject to sampling variability; that is, they may differ from the figures that would have been produced if the data had been obtained from all enterprises in the manufacturing industry in South Africa. Estimates are subject to sampling and non-sampling errors.
- 13** Inaccuracies may occur because of imperfections in reporting by enterprises and errors made in the collection and processing of the data. Inaccuracies of this kind are referred to as non-sampling errors. Every effort is made to minimise non-sampling errors by careful design of questionnaires, testing them in pilot studies, editing reported data and implementing efficient operating procedures. Fluctuations may occur in consecutive months as a result of seasonal and economic factors.
- Month-on-month percentage change** **14** The month-on-month percentage change in a variable for any given month is the change between that month and the previous month, expressed as a percentage of the latter.
- Year-on-year (annual) percentage change** **15** The year-on-year percentage change in a variable for any given period is the change between that period and the corresponding period of the previous year, expressed as a percentage of the latter.
- Index contribution (percentage points)** **16** The contribution (percentage points) of a major group or division to the total manufacturing production percentage change for a given period is calculated by multiplying the difference in the index of each major group or division by the weight of the major group or division and then dividing by the previous period total manufacturing index.
- Sales contribution (percentage points)** **17** The contribution (percentage points) of a division or major group to the percentage change in total manufacturing sales for a given period is calculated by multiplying the percentage change of each major group or division with its percentage contribution to the total sales of the previous period, divided by 100.

Glossary

Enterprise The enterprise is a legal entity or a combination of legal units that includes and directly controls all functions necessary to carry out its production activities.

Industry An industry is made up of enterprises engaged in the same or similar kinds of economic activity. Industries are defined in the *System of National Accounts (SNA)* in the same way as in the *1993 Standard Industrial Classification of all Economic Activities*, Fifth Edition, Report No. 09-90-02 of January 1993 (SIC).

Sales Sales are the total value of sales and transfers-out of all own manufactured products/articles and the amounts received for installation, erection or assembly or other services rendered.

Symbols and abbreviations

BSF	Business sampling frame
GDP	Gross domestic product
IMF	International Monetary Fund
ISIC	International Standard Industrial Classification
LSS	Large sample survey
NA	National accounts
PPI	Producer price index
Rm	R million
SIC	Standard Industrial Classification of all Economic Activities
SARS	South African Revenue Service
SDDS	Special Data Dissemination Standard
Stats SA	Statistics South Africa
VAT	Value added tax
*	Revised figures

Technical enquiries

Nicolai Claassen Telephone number: (012) 310 8007
Email: nicolaic@statssa.gov.za

Gerda Bruwer Telephone number: (012) 310 8249
Email: gerdab@statssa.gov.za

General information

Stats SA publishes approximately 300 different statistical releases each year. It is not economically viable to produce them in more than one of South Africa's eleven official languages. Since the releases are used extensively, not only locally but also by international economic and social-scientific communities, Stats SA releases are published in English.

Stats SA has copyright on this publication. Users may apply the information as they wish, provided that they acknowledge Stats SA as the source of the basic data wherever they process, apply, utilise, publish or distribute the data; and also that they specify that the relevant application and analysis (where applicable) result from their own processing of the data.

Advance release calendar

An advance release calendar is disseminated on www.statssa.gov.za

Stats SA products

A complete set of Stats SA publications is available at the Stats SA Library and the following libraries:

National Library of South Africa, Pretoria Division
National Library of South Africa, Cape Town Division
Natal Society Library, Pietermaritzburg
Library of Parliament, Cape Town
Bloemfontein Public Library
Johannesburg Public Library
Eastern Cape Library Services, King William's Town
Central Regional Library, Polokwane
Central Reference Library, Mbombela
Central Reference Collection, Kimberley
Central Reference Library, Mmabatho

Stats SA also provides a subscription service.

Electronic services

A large range of data is available via online services. For more details about our electronic data services, contact Stats SA's user information service at (012) 310 8600.

You can visit us on the Internet at: www.statssa.gov.za

General enquiries

User information services	Telephone number: (012) 310 8600 Email address: info@statssa.gov.za
Orders/subscription services	Telephone number: (012) 310 8044 Email: magdaj@statssa.gov.za
Postal address	Private Bag X44, Pretoria, 0001

Produced by Stats SA