



The South Africa I know, the home I understand

# Statistical release

**P3041.2**

## Manufacturing: Production and sales (Preliminary)

**February 2016**

**Embargoed until:  
7 April 2016  
13:00**

**Enquiries:**

Nicolai Claassen  
Tel. (012) 310 8007

**Forthcoming issue:**

March 2016

**Expected release date**

12 May 2016

**Contents**

**Production: results for February 2016** .....2

Table A – Key growth rates in the volume of manufacturing production .....2

Table B – Seasonally adjusted manufacturing production for the latest three months by division and major group  
(Base: 2010=100) .....3

Figure 1 – Volume of manufacturing production (Base: 2010=100).....4

Figure 2 – Volume of manufacturing production (Base: 2010=100): year-on-year percentage change .....4

**Sales: results for February 2016** .....5

Table C – Key growth rates in manufacturing sales at current prices .....5

Table D – Seasonally adjusted manufacturing sales at current prices for the latest three months by division .....5

**Tables**.....6

Table 1 – Index of the volume of manufacturing production (Base: 2010=100).....6

Table 2 – Year-on-year percentage change in the volume of manufacturing production .....6

Table 3 – Seasonally adjusted volume of manufacturing production .....6

Table 4 – Index of the volume of manufacturing production by division and major group (Base: 2010=100) .....7

Table 5 – Year-on-year percentage change in the volume of manufacturing production by division and major group  
(Base: 2010=100) .....8

Table 6 – Contribution of each division and major group to the year-on-year percentage change in the volume of  
manufacturing production (percentage points) .....9

Table 7 – Seasonally adjusted index of the volume of manufacturing production by division and major group (Base:  
2010=100).....10

Table 8 – Manufacturing sales at current prices (R million) .....11

Table 9 – Year-on-year percentage change in manufacturing sales at current prices.....11

Table 10 – Seasonally adjusted manufacturing sales at current prices .....11

Table 11 – Manufacturing sales at current prices by division and major group (R million) .....12

Table 12 – Year-on-year percentage change in manufacturing sales at current prices by division and major group  
.....13

Table 13 – Contribution of each division and major group to the year-on-year percentage change in manufacturing  
sales at current prices (percentage points) .....14

Table 14 – Seasonally adjusted manufacturing sales at current prices by division and major group (R million) .....15

**Survey information** .....16

**Technical notes**.....17

Table E – Weights by division and major group .....19

**Glossary**.....21

**Technical enquiries** .....21

**General information**.....22

**Production: results for February 2016**

**Table A – Key growth rates in the volume of manufacturing production**

	Sep-15	Oct-15	Nov-15	Dec-15	Jan-16	Feb-16
Year-on-year % change, unadjusted	1,3	-2,3	-1,2	0,5	-2,6	1,9
Month-on-month % change, seasonally adjusted	2,4	-1,9	-1,3	2,0	-1,8	1,3
3-month % change, seasonally adjusted <sup>1</sup>	1,3	1,6	0,8	-0,5	-1,1	-0,3

<sup>1</sup> Percentage change between the previous 3 months and the 3 months ending in the month indicated.

Manufacturing production increased by 1,9% in February 2016 compared with February 2015. This increase was mainly due to higher production in the following divisions:

- petroleum, chemical products, rubber and plastic products (4,2% and contributing 0,9 of a percentage point);
- food and beverages (3,8% and contributing 0,9 of a percentage point);
- wood and wood products, paper, publishing and printing (4,7% and contributing 0,6 of a percentage point); and
- radio, television and communication apparatus and professional equipment (21,3% and contributing 0,3 of a percentage point).

The basic iron and steel, non-ferrous metal products, metal products and machinery division (-3,3% and contributing -0,7 of a percentage point) was a significant negative contributor – see Tables 5 and 6.

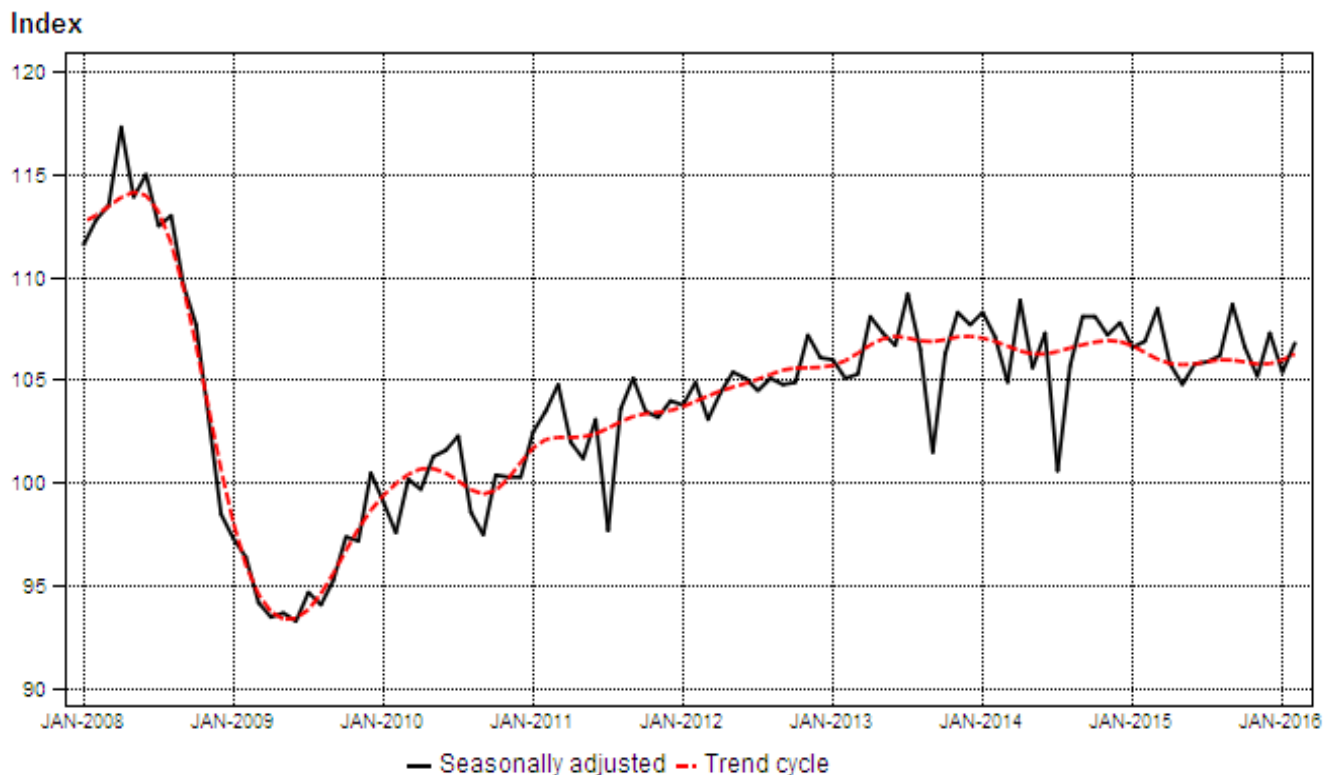
Seasonally adjusted manufacturing production increased by 1,3% in February 2016 compared with January 2016. This followed month-on-month changes of -1,8% in January 2016 and 2,0% in December 2015 – see Table A.

Seasonally adjusted manufacturing production decreased by 0,3% in the three months ended February 2016 compared with the previous three months. Five of the ten manufacturing divisions reported negative growth rates over this period – see Table B.

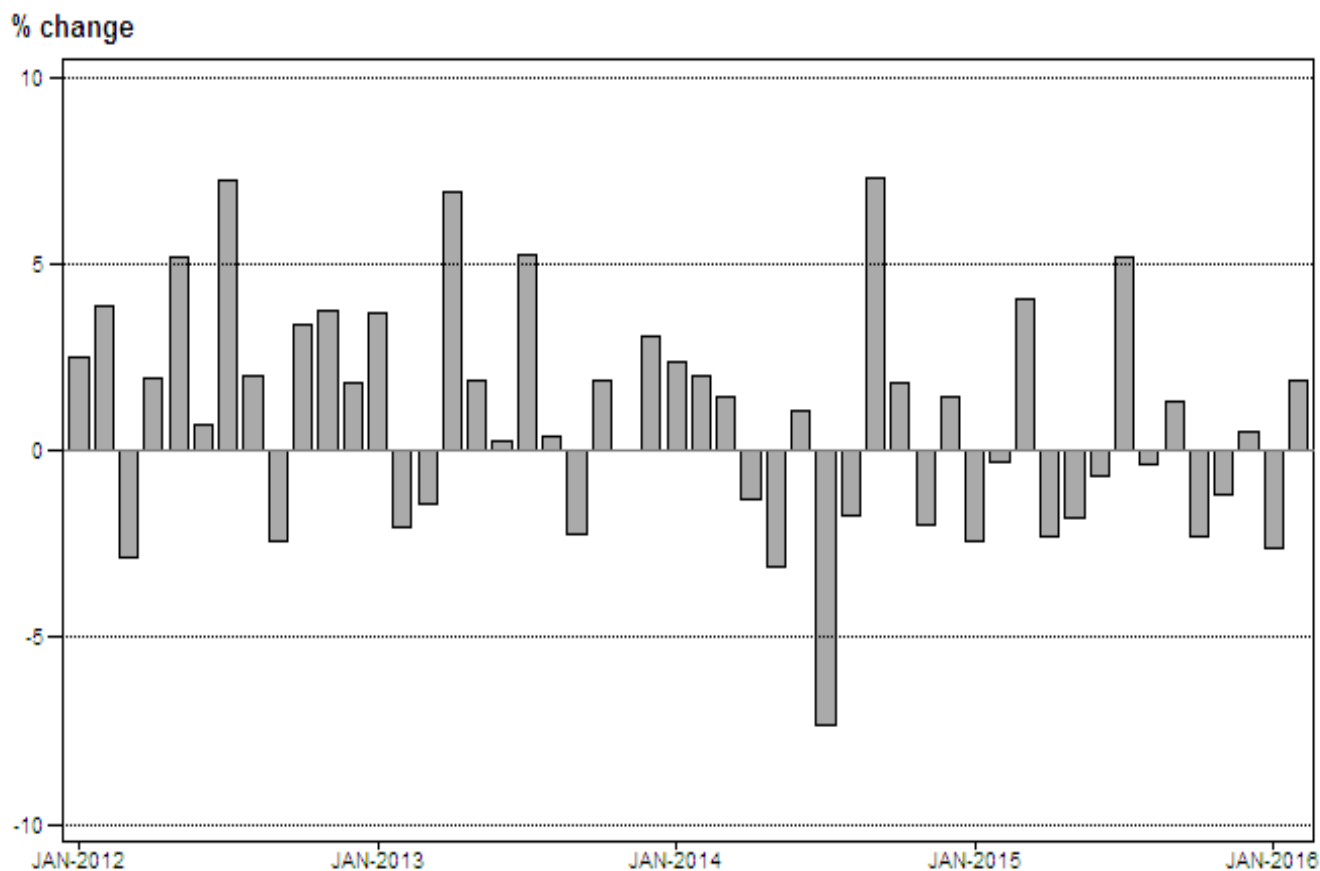
**Table B – Seasonally adjusted manufacturing production for the latest three months by division and major group (Base: 2010=100)**

Manufacturing division and major group	Weight (2012)	Sep – Nov 2015	Dec 2015 – Feb 2016	% change between Sep – Nov 2015 and Dec 2015 – Feb 2016	Contribution (% points) to the total % change
<b>Food and beverages</b>	<b>24,44</b>	<b>113,7</b>	<b>113,8</b>	<b>0,1</b>	<b>0,0</b>
Meat, fish, fruit, etc.	5,39	121,7	119,0	-2,2	-0,1
Dairy products	1,78	118,1	116,3	-1,5	0,0
Grain mill products	2,86	103,2	107,5	4,2	0,1
Other food products	7,73	104,7	111,1	6,1	0,5
Beverages	6,68	121,1	114,9	-5,1	-0,4
<b>Textiles, clothing, leather and footwear</b>	<b>3,17</b>	<b>95,9</b>	<b>95,0</b>	<b>-0,9</b>	<b>0,0</b>
Textiles	0,74	84,7	84,4	-0,4	0,0
Other textile products	0,47	90,2	88,8	-1,6	0,0
Knitted, crocheted articles	0,10	53,1	52,2	-1,7	0,0
Wearing apparel	1,19	101,4	98,1	-3,3	0,0
Leather and leather products	0,28	118,5	116,6	-1,6	0,0
Footwear	0,39	101,2	108,3	7,0	0,0
<b>Wood and wood products, paper, publishing and printing</b>	<b>12,65</b>	<b>104,0</b>	<b>105,8</b>	<b>1,7</b>	<b>0,2</b>
Sawmilling and planing of wood	1,83	125,9	125,6	-0,2	0,0
Products of wood	2,55	102,3	105,8	3,4	0,1
Paper and paper products	4,89	105,4	108,9	3,3	0,2
Publishing	1,51	92,4	92,7	0,3	0,0
Printing, recorded media	1,87	90,2	88,4	-2,0	0,0
<b>Petroleum, chemical products, rubber and plastic products</b>	<b>22,13</b>	<b>111,5</b>	<b>110,4</b>	<b>-1,0</b>	<b>-0,2</b>
Coke, petroleum products and nuclear fuel	7,77	108,0	102,8	-4,8	-0,4
Basic chemicals	3,81	116,0	113,9	-1,8	-0,1
Other chemical products	6,49	117,6	121,1	3,0	0,2
Rubber products	1,00	105,4	100,4	-4,7	0,0
Plastic products	3,06	103,4	106,0	2,5	0,1
<b>Glass and non-metallic mineral products</b>	<b>3,91</b>	<b>99,7</b>	<b>94,3</b>	<b>-5,4</b>	<b>-0,2</b>
Glass and glass products	0,78	94,9	93,2	-1,8	0,0
Non-metallic mineral products	3,13	100,9	94,5	-6,3	-0,2
<b>Basic iron and steel, non-ferrous metal products, metal products and machinery</b>	<b>19,59</b>	<b>97,0</b>	<b>98,8</b>	<b>1,9</b>	<b>0,3</b>
Basic iron and steel products	3,38	80,7	90,3	11,9	0,3
Non-ferrous metal products	3,18	92,4	95,9	3,8	0,1
Structural metal products	1,89	79,0	79,7	0,9	0,0
Other fabricated metal products	4,40	117,7	118,8	0,9	0,0
General purpose machinery	2,44	80,1	76,8	-4,1	-0,1
Special purpose machinery	3,44	110,7	109,5	-1,1	0,0
Household appliances	0,86	105,3	101,9	-3,2	0,0
<b>Electrical machinery</b>	<b>1,70</b>	<b>112,5</b>	<b>113,1</b>	<b>0,5</b>	<b>0,0</b>
<b>Radio, television and communication apparatus and professional equipment</b>	<b>1,41</b>	<b>143,8</b>	<b>147,0</b>	<b>2,2</b>	<b>0,0</b>
Radio, television and communication	0,90	165,6	167,8	1,3	0,0
Professional equipment	0,51	104,9	110,0	4,9	0,0
<b>Motor vehicles, parts and accessories and other transport equipment</b>	<b>7,39</b>	<b>108,8</b>	<b>103,8</b>	<b>-4,6</b>	<b>-0,3</b>
Motor vehicles	2,98	123,8	114,6	-7,4	-0,3
Bodies for motor vehicles, trailers and semi-	0,43	113,4	113,8	0,4	0,0
Parts and accessories	2,77	93,0	92,7	-0,3	0,0
Other transport equipment	1,21	106,4	99,4	-6,6	-0,1
<b>Furniture and other manufacturing</b>	<b>3,61</b>	<b>91,8</b>	<b>87,8</b>	<b>-4,4</b>	<b>-0,1</b>
Furniture	1,08	107,1	102,1	-4,7	-0,1
Other manufacturing groups	2,53	85,2	81,6	-4,2	-0,1
<b>Total</b>	<b>100</b>	<b>106,8</b>	<b>106,5</b>	<b>-0,3</b>	<b>-0,3</b>

**Figure 1 – Volume of manufacturing production (Base: 2010=100)**



**Figure 2 – Volume of manufacturing production (Base: 2010=100): year-on-year percentage change**



**Sales: results for February 2016**

**Table C – Key growth rates in manufacturing sales at current prices**

	Sep-15	Oct-15	Nov-15	Dec-15	Jan-16	Feb-16
Year-on-year % change, unadjusted	2,6	-1,5	1,8	1,9	2,8	8,1
Month-on-month % change, seasonally adjusted	2,3	0,0	-1,5	-0,2	1,0	0,7
3-month % change, seasonally adjusted <sup>1</sup>	1,9	1,5	1,6	0,2	-0,6	-0,3

<sup>1</sup> Percentage change between the previous 3 months and the 3 months ending in the month indicated.

Seasonally adjusted manufacturing sales increased by 0,7% in February 2016 compared with January 2016. This followed month-on-month changes of 1,0% in January 2016 and -0,2% in December 2015 – see Table C.

**Table D – Seasonally adjusted manufacturing sales at current prices for the latest three months by division**

Manufacturing division	Sep – Nov 2015 (R million)	Dec 2015 – Feb 2016 (R million)	% change between Sep – Nov 2015 and Dec 2015 – Feb 2016	Contribution (% points) to the total % change
Food and beverages	108 428	110 431	1,8	0,4
Textiles, clothing, leather and footwear	12 919	12 976	0,4	0,0
Wood and wood products, paper, publishing and printing	36 466	37 270	2,2	0,2
Petroleum, chemical products, rubber and plastic products	109 062	107 221	-1,7	-0,4
Glass and non-metallic mineral products	13 855	13 751	-0,8	0,0
Basic iron and steel, non-ferrous metal products, metal products and machinery	96 069	97 083	1,1	0,2
Electrical machinery	14 946	15 063	0,8	0,0
Radio, television and communication apparatus and professional equipment	5 532	5 631	1,8	0,0
Motor vehicles, parts and accessories and other transport equipment	62 445	59 072	-5,4	-0,7
Furniture and other manufacturing	15 172	14 757	-2,7	-0,1
<b>Total</b>	<b>474 889</b>	<b>473 256</b>	<b>-0,3</b>	<b>-0,3</b>

**PJ Lehohla  
Statistician-General**

**Tables**

**Table 1 – Index of the volume of manufacturing production (Base: 2010=100)**

Month	2010	2011	2012	2013	2014	2015 <sup>1</sup>	2016 <sup>1</sup>
Jan	84,5	86,7	88,9	92,2	94,4	92,1	89,7
Feb	92,2	98,4	102,2	100,1	102,1	101,8	103,7
Mar	103,8	109,3	106,2	104,7	106,2	110,5	
Apr	93,4	93,4	95,2	101,8	100,5	98,2	
May	100,6	101,6	106,9	108,9	105,5	103,6	
Jun	102,9	104,2	104,9	105,2	106,3	105,6	
Jul	105,3	98,9	106,1	111,7	103,5	108,9	
Aug	101,6	107,8	110,0	110,4	108,5	108,1	
Sep	102,2	110,4	107,7	105,3	113,0	114,5	
Oct	110,3	112,9	116,7	118,9	121,1	118,3	
Nov	112,2	116,6	121,0	121,0	118,6	117,2	
Dec	91,0	93,5	95,2	98,1	99,5	100,0	
<b>Total</b>	<b>100,0</b>	<b>102,8</b>	<b>105,1</b>	<b>106,5</b>	<b>106,6</b>	<b>106,6</b>	

<sup>1</sup> The latest three months are preliminary.

**Table 2 – Year-on-year percentage change in the volume of manufacturing production**

Month	2011	2012	2013	2014	2015	2016	2016 year-to-date
Jan	2,6	2,5	3,7	2,4	-2,4	-2,6	-2,6
Feb	6,7	3,9	-2,1	2,0	-0,3	1,9	-0,3
Mar	5,3	-2,8	-1,4	1,4	4,0		
Apr	0,0	1,9	6,9	-1,3	-2,3		
May	1,0	5,2	1,9	-3,1	-1,8		
Jun	1,3	0,7	0,3	1,0	-0,7		
Jul	-6,1	7,3	5,3	-7,3	5,2		
Aug	6,1	2,0	0,4	-1,7	-0,4		
Sep	8,0	-2,4	-2,2	7,3	1,3		
Oct	2,4	3,4	1,9	1,9	-2,3		
Nov	3,9	3,8	0,0	-2,0	-1,2		
Dec	2,7	1,8	3,0	1,4	0,5		
<b>Total</b>	<b>2,8</b>	<b>2,2</b>	<b>1,3</b>	<b>0,1</b>	<b>0,0</b>		

**Table 3 – Seasonally adjusted volume of manufacturing production**

Month	Index (Base: 2010=100)				Month-on-month % change			
	2013	2014	2015	2016	2013	2014	2015	2016
Jan	106,0	108,3	106,6	105,4	-0,1	0,6	-1,1	-1,8
Feb	105,1	107,1	106,9	106,8	-0,8	-1,1	0,3	1,3
Mar	105,3	104,9	108,5		0,2	-2,1	1,5	
Apr	108,1	108,9	105,8		2,7	3,8	-2,5	
May	107,3	105,6	104,8		-0,7	-3,0	-0,9	
Jun	106,7	107,3	105,8		-0,6	1,6	1,0	
Jul	109,2	100,6	105,9		2,3	-6,2	0,1	
Aug	106,5	105,7	106,2		-2,5	5,1	0,3	
Sep	101,5	108,1	108,7		-4,7	2,3	2,4	
Oct	106,3	108,1	106,6		4,7	0,0	-1,9	
Nov	108,3	107,2	105,2		1,9	-0,8	-1,3	
Dec	107,7	107,8	107,3		-0,6	0,6	2,0	

**Table 4 – Index of the volume of manufacturing production by division and major group (Base: 2010=100)**

Manufacturing division and major group	Weight (2012)	Sep-15	Oct-15	Nov-15	<sup>1</sup> Dec-15	<sup>1</sup> Jan-16	<sup>1</sup> Feb-16
<b>Food and beverages</b>	<b>24,44</b>	<b>123,4</b>	<b>126,3</b>	<b>120,2</b>	<b>131,5</b>	<b>93,2</b>	<b>105,4</b>
Meat, fish, fruit, etc.	5,39	124,3	126,9	132,4	134,2	98,0	107,7
Dairy products	1,78	122,7	134,6	123,5	135,6	112,0	113,2
Grain mill products	2,86	106,8	105,1	109,9	109,1	96,6	99,8
Other food products	7,73	119,9	124,9	100,6	106,0	76,8	96,4
Beverages	6,68	134,1	134,2	136,7	167,2	101,7	114,4
<b>Textiles, clothing, leather and footwear</b>	<b>3,17</b>	<b>102,8</b>	<b>112,6</b>	<b>112,8</b>	<b>73,1</b>	<b>70,5</b>	<b>98,8</b>
Textiles	0,74	90,7	91,2	95,4	56,0	67,6	95,6
Other textile products	0,47	91,0	110,9	103,7	64,3	69,9	96,3
Knitted, crocheted articles	0,10	53,9	62,9	60,5	33,3	42,1	51,7
Wearing apparel	1,19	108,6	121,2	125,4	83,4	62,4	99,4
Leather and leather products	0,28	126,0	126,4	124,9	106,4	106,5	115,4
Footwear	0,39	117,4	131,3	122,2	71,0	82,7	105,3
<b>Wood and wood products, paper, publishing and printing</b>	<b>12,65</b>	<b>115,4</b>	<b>113,6</b>	<b>117,9</b>	<b>95,3</b>	<b>91,9</b>	<b>101,7</b>
Sawmilling and planing of wood	1,83	135,2	137,0	130,3	105,9	107,2	129,2
Products of wood	2,55	112,0	116,9	116,5	80,2	86,5	103,9
Paper and paper products	4,89	121,1	108,2	113,4	105,0	101,7	99,8
Publishing	1,51	103,0	108,1	113,9	97,5	74,9	87,6
Printing, recorded media	1,87	95,9	104,7	122,8	78,5	72,3	88,2
<b>Petroleum, chemical products, rubber and plastic products</b>	<b>22,13</b>	<b>113,6</b>	<b>123,3</b>	<b>120,9</b>	<b>107,0</b>	<b>102,6</b>	<b>106,6</b>
Coke, petroleum products and nuclear fuel	7,77	100,6	114,6	109,9	109,6	107,3	97,2
Basic chemicals	3,81	118,6	129,9	128,6	111,7	106,5	108,1
Other chemical products	6,49	131,0	131,6	128,9	116,4	103,0	118,5
Rubber products	1,00	104,4	120,5	113,5	69,8	90,7	100,2
Plastic products	3,06	106,8	120,4	124,9	86,8	88,5	105,3
<b>Glass and non-metallic mineral products</b>	<b>3,91</b>	<b>110,9</b>	<b>111,6</b>	<b>111,2</b>	<b>72,1</b>	<b>76,9</b>	<b>89,1</b>
Glass and glass products	0,78	106,4	109,5	112,2	88,0	83,1	86,2
Non-metallic mineral products	3,13	112,0	112,1	111,0	68,1	75,3	89,8
<b>Basic iron and steel, non-ferrous metal products, metal products and machinery</b>	<b>19,59</b>	<b>103,8</b>	<b>104,4</b>	<b>104,4</b>	<b>82,0</b>	<b>81,0</b>	<b>99,6</b>
Basic iron and steel products	3,38	80,4	81,3	80,5	80,2	85,4	92,3
Non-ferrous metal products	3,18	93,2	98,0	92,0	81,8	89,8	97,7
Structural metal products	1,89	84,7	90,0	87,0	62,5	64,9	83,6
Other fabricated metal products	4,40	131,0	131,4	132,8	83,9	93,0	123,3
General purpose machinery	2,44	85,9	88,7	89,2	68,5	59,4	73,2
Special purpose machinery	3,44	122,9	114,9	120,0	101,4	76,4	107,0
Household appliances	0,86	113,6	114,6	118,7	82,8	84,9	95,5
<b>Electrical machinery</b>	<b>1,70</b>	<b>123,4</b>	<b>116,2</b>	<b>129,5</b>	<b>91,6</b>	<b>85,6</b>	<b>108,9</b>
<b>Radio, television and communication apparatus and professional equipment</b>	<b>1,41</b>	<b>154,8</b>	<b>162,4</b>	<b>178,9</b>	<b>142,2</b>	<b>113,2</b>	<b>142,6</b>
Radio, television and communication apparatus	0,90	181,6	186,9	213,9	165,3	128,0	162,1
Professional equipment	0,51	107,0	118,8	116,5	101,1	86,8	107,7
<b>Motor vehicles, parts and accessories and other transport equipment</b>	<b>7,39</b>	<b>116,6</b>	<b>124,0</b>	<b>126,3</b>	<b>64,7</b>	<b>84,3</b>	<b>108,8</b>
Motor vehicles	2,98	133,8	147,4	153,2	56,5	88,5	123,0
Bodies for motor vehicles, trailers and semi-trailers	0,43	115,5	135,3	137,9	66,8	86,5	106,3
Parts and accessories	2,77	97,6	102,6	105,9	51,9	81,4	101,9
Other transport equipment	1,21	118,1	111,2	102,5	113,1	80,1	90,5
<b>Furniture and other manufacturing</b>	<b>3,61</b>	<b>104,0</b>	<b>109,4</b>	<b>104,3</b>	<b>70,4</b>	<b>61,2</b>	<b>96,2</b>
Furniture	1,08	118,0	137,9	140,2	90,0	63,1	90,3
Other manufacturing groups	2,53	97,9	97,2	88,9	62,0	60,4	98,6
<b>Total</b>	<b>100</b>	<b>114,5</b>	<b>118,3</b>	<b>117,2</b>	<b>100,0</b>	<b>89,7</b>	<b>103,7</b>

<sup>1</sup> The latest three months are preliminary.



**Table 5 – Year-on-year percentage change in the volume of manufacturing production by division and major group (Base: 2010=100)**

Manufacturing division and major group	Sep-15	Oct-15	Nov-15	Dec-15	Jan-16	Feb-16
<b>Food and beverages</b>	<b>3,4</b>	<b>3,7</b>	<b>1,8</b>	<b>4,2</b>	<b>-2,3</b>	<b>3,8</b>
Meat, fish, fruit, etc.	1,6	5,5	9,3	3,8	0,0	0,6
Dairy products	6,9	8,5	5,6	8,1	-5,6	15,2
Grain mill products	-0,7	-3,6	2,0	5,5	2,1	7,2
Other food products	-1,3	6,4	-10,3	1,0	5,3	5,0
Beverages	10,9	1,0	7,3	5,8	-10,6	1,5
<b>Textiles, clothing, leather and footwear</b>	<b>-1,6</b>	<b>-4,8</b>	<b>-4,0</b>	<b>-4,1</b>	<b>-0,7</b>	<b>-0,3</b>
Textiles	-1,0	-5,5	-1,3	0,0	5,8	3,6
Other textile products	-7,7	-3,6	-8,0	-14,4	-11,7	-2,6
Knitted, crocheted articles	-2,0	2,1	-9,8	-8,8	5,8	-2,1
Wearing apparel	1,7	-3,9	-2,6	-2,6	-5,2	1,3
Leather and leather products	3,4	-2,8	-8,2	-8,5	-0,8	-10,2
Footwear	-8,8	-9,4	-3,9	3,0	14,5	-0,7
<b>Wood and wood products, paper, publishing and printing</b>	<b>1,8</b>	<b>-4,1</b>	<b>-2,1</b>	<b>-2,2</b>	<b>5,0</b>	<b>4,7</b>
Sawmilling and planing of wood	17,5	2,8	3,9	14,5	-1,6	0,0
Products of wood	-4,6	-3,8	-1,9	9,6	5,5	7,7
Paper and paper products	9,6	-1,4	-1,7	-5,1	13,9	7,7
Publishing	-11,3	-13,5	-8,9	-12,3	-2,7	0,3
Printing, recorded media	-14,4	-10,4	-3,2	-12,1	-6,8	2,9
<b>Petroleum, chemical products, rubber and plastic products</b>	<b>6,2</b>	<b>1,7</b>	<b>-0,7</b>	<b>2,6</b>	<b>0,0</b>	<b>4,2</b>
Coke, petroleum products and nuclear fuel	15,6	9,8	1,1	-2,8	-4,1	1,1
Basic chemicals	1,9	-1,7	-6,3	-0,5	4,9	11,2
Other chemical products	6,5	-2,9	0,2	11,4	0,3	2,8
Rubber products	-2,1	0,1	-4,6	3,9	0,1	-2,0
Plastic products	-5,0	0,2	2,3	3,2	5,5	8,8
<b>Glass and non-metallic mineral products</b>	<b>6,2</b>	<b>-4,6</b>	<b>2,3</b>	<b>-1,1</b>	<b>2,3</b>	<b>-3,7</b>
Glass and glass products	14,0	0,7	7,4	0,9	4,8	-1,5
Non-metallic mineral products	4,6	-5,9	1,1	-1,7	1,5	-4,2
<b>Basic iron and steel, non-ferrous metal products, metal products and machinery</b>	<b>-4,5</b>	<b>-9,8</b>	<b>-7,1</b>	<b>-6,1</b>	<b>-9,4</b>	<b>-3,3</b>
Basic iron and steel products	-15,2	-18,8	-17,9	-7,2	-19,1	-5,7
Non-ferrous metal products	-8,1	-11,2	-8,6	-9,1	-4,7	4,8
Structural metal products	5,2	-7,4	-6,5	0,5	6,4	-3,7
Other fabricated metal products	-5,9	-6,2	-2,7	-7,6	-2,6	-0,2
General purpose machinery	-6,3	-14,4	-6,8	-12,3	-11,5	-11,7
Special purpose machinery	3,4	-4,8	-3,1	-1,4	-11,7	-4,0
Household appliances	10,2	-11,1	-11,3	1,0	-26,2	-16,4
<b>Electrical machinery</b>	<b>9,3</b>	<b>2,1</b>	<b>13,3</b>	<b>12,0</b>	<b>8,5</b>	<b>8,5</b>
<b>Radio, television and communication apparatus and professional equipment</b>	<b>2,4</b>	<b>-5,4</b>	<b>1,8</b>	<b>12,7</b>	<b>39,6</b>	<b>21,3</b>
Radio, television and communication apparatus	4,7	-9,1	1,1	14,6	49,9	29,6
Professional equipment	-3,9	6,6	4,2	7,8	18,4	3,5
<b>Motor vehicles, parts and accessories and other transport equipment</b>	<b>-7,5</b>	<b>-6,5</b>	<b>4,0</b>	<b>-5,8</b>	<b>-11,6</b>	<b>-2,9</b>
Motor vehicles	-16,7	-12,6	-0,2	-18,4	-25,6	-10,3
Bodies for motor vehicles, trailers and semi-trailers	-5,0	-4,1	11,2	2,6	9,2	-6,3
Parts and accessories	-0,9	-0,1	7,7	-1,7	0,5	10,0
Other transport equipment	12,2	1,9	7,7	7,7	4,8	-3,8
<b>Furniture and other manufacturing</b>	<b>0,4</b>	<b>-10,3</b>	<b>-10,2</b>	<b>-3,8</b>	<b>-19,0</b>	<b>-0,4</b>
Furniture	-4,2	-3,8	0,8	-3,9	-12,7	-12,3
Other manufacturing groups	2,8	-13,8	-16,4	-3,7	-21,7	4,9
<b>Total</b>	<b>1,3</b>	<b>-2,3</b>	<b>-1,2</b>	<b>0,5</b>	<b>-2,6</b>	<b>1,9</b>

**Table 6 – Contribution of each division and major group to the year-on-year percentage change in the volume of manufacturing production (percentage points)**

Manufacturing division and major group	Weight (2012)	Sep-15	Oct-15	Nov-15	Dec-15	Jan-16	Feb-16
<b>Food and beverages</b>	<b>24,44</b>	<b>0,9</b>	<b>0,9</b>	<b>0,4</b>	<b>1,3</b>	<b>-0,6</b>	<b>0,9</b>
Meat, fish, fruit, etc.	5,39	0,1	0,3	0,5	0,3	0,0	0,0
Dairy products	1,78	0,1	0,2	0,1	0,2	-0,1	0,3
Grain mill products	2,86	0,0	-0,1	0,1	0,2	0,1	0,2
Other food products	7,73	-0,1	0,5	-0,8	0,1	0,3	0,3
Beverages	6,68	0,8	0,1	0,5	0,6	-0,9	0,1
<b>Textiles, clothing, leather and footwear</b>	<b>3,17</b>	<b>0,0</b>	<b>-0,1</b>	<b>-0,1</b>	<b>-0,1</b>	<b>0,0</b>	<b>0,0</b>
Textiles	0,74	0,0	0,0	0,0	0,0	0,0	0,0
Other textile products	0,47	0,0	0,0	0,0	-0,1	0,0	0,0
Knitted, crocheted articles	0,10	0,0	0,0	0,0	0,0	0,0	0,0
Wearing apparel	1,19	0,0	0,0	0,0	0,0	0,0	0,0
Leather and leather products	0,28	0,0	0,0	0,0	0,0	0,0	0,0
Footwear	0,39	0,0	0,0	0,0	0,0	0,0	0,0
<b>Wood and wood products, paper, publishing and printing</b>	<b>12,65</b>	<b>0,2</b>	<b>-0,5</b>	<b>-0,3</b>	<b>-0,3</b>	<b>0,6</b>	<b>0,6</b>
Sawmilling and planing of wood	1,83	0,3	0,1	0,1	0,2	0,0	0,0
Products of wood	2,55	-0,1	-0,1	0,0	0,2	0,1	0,2
Paper and paper products	4,89	0,5	-0,1	-0,1	-0,3	0,7	0,3
Publishing	1,51	-0,2	-0,2	-0,1	-0,2	0,0	0,0
Printing, recorded media	1,87	-0,3	-0,2	-0,1	-0,2	-0,1	0,0
<b>Petroleum, chemical products, rubber and plastic products</b>	<b>22,13</b>	<b>1,3</b>	<b>0,4</b>	<b>-0,2</b>	<b>0,6</b>	<b>0,0</b>	<b>0,9</b>
Coke, petroleum products and nuclear fuel	7,77	0,9	0,7	0,1	-0,2	-0,4	0,1
Basic chemicals	3,81	0,1	-0,1	-0,3	0,0	0,2	0,4
Other chemical products	6,49	0,5	-0,2	0,0	0,8	0,0	0,2
Rubber products	1,00	0,0	0,0	0,0	0,0	0,0	0,0
Plastic products	3,06	-0,2	0,0	0,1	0,1	0,2	0,3
<b>Glass and non-metallic mineral products</b>	<b>3,91</b>	<b>0,2</b>	<b>-0,2</b>	<b>0,1</b>	<b>0,0</b>	<b>0,1</b>	<b>-0,1</b>
Glass and glass products	0,78	0,1	0,0	0,1	0,0	0,0	0,0
Non-metallic mineral products	3,13	0,1	-0,2	0,0	0,0	0,0	-0,1
<b>Basic iron and steel, non-ferrous metal products, metal products and machinery</b>	<b>19,59</b>	<b>-0,8</b>	<b>-1,8</b>	<b>-1,3</b>	<b>-1,0</b>	<b>-1,8</b>	<b>-0,7</b>
Basic iron and steel products	3,38	-0,4	-0,5	-0,5	-0,2	-0,7	-0,2
Non-ferrous metal products	3,18	-0,2	-0,3	-0,2	-0,3	-0,2	0,1
Structural metal products	1,89	0,1	-0,1	-0,1	0,0	0,1	-0,1
Other fabricated metal products	4,40	-0,3	-0,3	-0,1	-0,3	-0,1	0,0
General purpose machinery	2,44	-0,1	-0,3	-0,1	-0,2	-0,2	-0,2
Special purpose machinery	3,44	0,1	-0,2	-0,1	0,0	-0,4	-0,2
Household appliances	0,86	0,1	-0,1	-0,1	0,0	-0,3	-0,2
<b>Electrical machinery</b>	<b>1,70</b>	<b>0,2</b>	<b>0,0</b>	<b>0,2</b>	<b>0,2</b>	<b>0,1</b>	<b>0,1</b>
<b>Radio, television and communication apparatus and professional equipment</b>	<b>1,41</b>	<b>0,0</b>	<b>-0,1</b>	<b>0,0</b>	<b>0,2</b>	<b>0,5</b>	<b>0,3</b>
Radio, television and communication apparatus	0,90	0,1	-0,1	0,0	0,2	0,4	0,3
Professional equipment	0,51	0,0	0,0	0,0	0,0	0,1	0,0
<b>Motor vehicles, parts and accessories and other transport equipment</b>	<b>7,39</b>	<b>-0,6</b>	<b>-0,5</b>	<b>0,3</b>	<b>-0,3</b>	<b>-0,9</b>	<b>-0,2</b>
Motor vehicles	2,98	-0,7	-0,5	0,0	-0,4	-1,0	-0,4
Bodies for motor vehicles, trailers and semi-trailers	0,43	0,0	0,0	0,1	0,0	0,0	0,0
Parts and accessories	2,77	0,0	0,0	0,2	0,0	0,0	0,3
Other transport equipment	1,21	0,1	0,0	0,1	0,1	0,0	0,0
<b>Furniture and other manufacturing</b>	<b>3,61</b>	<b>0,0</b>	<b>-0,4</b>	<b>-0,4</b>	<b>-0,1</b>	<b>-0,6</b>	<b>0,0</b>
Furniture	1,08	0,0	0,0	0,0	0,0	-0,1	-0,1
Other manufacturing groups	2,53	0,1	-0,3	-0,4	-0,1	-0,5	0,1
<b>Total</b>	<b>100</b>	<b>1,3</b>	<b>-2,3</b>	<b>-1,2</b>	<b>0,5</b>	<b>-2,6</b>	<b>1,9</b>

**Table 7 – Seasonally adjusted index of the volume of manufacturing production by division and major group (Base: 2010=100)**

Manufacturing division and major group	Weight (2012)	Oct-15	Nov-15	Dec-15	Jan-16	Feb-16	Month-on-month % change
<b>Food and beverages</b>	<b>24,44</b>	<b>116,4</b>	<b>110,4</b>	<b>117,1</b>	<b>110,8</b>	<b>113,5</b>	<b>2,4</b>
Meat, fish, fruit, etc.	5,39	123,3	122,8	122,7	119,5	114,7	-4,0
Dairy products	1,78	119,9	117,0	122,0	111,5	115,5	3,6
Grain mill products	2,86	103,0	103,3	108,2	106,3	108,0	1,6
Other food products	7,73	112,2	96,2	113,7	106,8	112,7	5,5
Beverages	6,68	120,5	118,3	119,0	110,3	115,4	4,6
<b>Textiles, clothing, leather and footwear</b>	<b>3,17</b>	<b>96,1</b>	<b>94,8</b>	<b>94,5</b>	<b>95,4</b>	<b>95,1</b>	<b>-0,3</b>
Textiles	0,74	82,2	85,6	82,6	86,1	84,4	-2,0
Other textile products	0,47	95,3	87,0	86,1	91,0	89,2	-2,0
Knitted, crocheted articles	0,10	54,6	51,1	49,6	56,5	50,6	-10,4
Wearing apparel	1,19	101,4	100,2	100,1	93,5	100,6	7,6
Leather and leather products	0,28	116,9	112,8	118,6	118,8	112,5	-5,3
Footwear	0,39	102,4	102,8	104,1	116,8	103,9	-11,0
<b>Wood and wood products, paper, publishing and printing</b>	<b>12,65</b>	<b>102,8</b>	<b>103,2</b>	<b>104,1</b>	<b>106,9</b>	<b>106,3</b>	<b>-0,6</b>
Sawmilling and planing of wood	1,83	124,9	122,4	127,8	123,5	125,6	1,7
Products of wood	2,55	101,0	101,5	103,1	106,3	107,9	1,5
Paper and paper products	4,89	104,0	103,6	105,0	113,7	108,1	-4,9
Publishing	1,51	92,6	92,1	94,8	90,9	92,5	1,8
Printing, recorded media	1,87	88,5	94,4	87,2	86,7	91,4	5,4
<b>Petroleum, chemical products, rubber and plastic products</b>	<b>22,13</b>	<b>111,7</b>	<b>110,2</b>	<b>111,5</b>	<b>109,7</b>	<b>110,0</b>	<b>0,3</b>
Coke, petroleum products and nuclear fuel	7,77	110,0	106,4	102,3	101,6	104,4	2,8
Basic chemicals	3,81	115,8	113,6	112,7	114,6	114,5	-0,1
Other chemical products	6,49	115,1	116,1	126,2	119,6	117,4	-1,8
Rubber products	1,00	109,7	104,9	105,1	101,0	95,2	-5,7
Plastic products	3,06	104,1	104,5	104,6	106,0	107,5	1,4
<b>Glass and non-metallic mineral products</b>	<b>3,91</b>	<b>97,9</b>	<b>98,0</b>	<b>90,5</b>	<b>97,5</b>	<b>94,8</b>	<b>-2,8</b>
Glass and glass products	0,78	91,7	94,6	92,3	95,6	91,8	-4,0
Non-metallic mineral products	3,13	99,5	98,9	90,0	98,0	95,6	-2,4
<b>Basic iron and steel, non-ferrous metal products, metal products and machinery</b>	<b>19,59</b>	<b>95,3</b>	<b>96,0</b>	<b>98,6</b>	<b>97,5</b>	<b>100,2</b>	<b>2,8</b>
Basic iron and steel products	3,38	79,1	82,0	91,7	85,6	93,7	9,5
Non-ferrous metal products	3,18	90,8	92,6	92,2	93,6	101,9	8,9
Structural metal products	1,89	77,5	76,5	79,9	81,1	78,0	-3,8
Other fabricated metal products	4,40	116,3	116,2	115,7	118,7	121,9	2,7
General purpose machinery	2,44	79,2	78,9	77,2	76,5	76,7	0,3
Special purpose machinery	3,44	108,1	107,6	111,4	108,9	108,1	-0,7
Household appliances	0,86	102,9	104,4	112,7	99,8	93,3	-6,5
<b>Electrical machinery</b>	<b>1,70</b>	<b>108,3</b>	<b>115,0</b>	<b>117,4</b>	<b>110,3</b>	<b>111,5</b>	<b>1,1</b>
<b>Radio, television and communication apparatus and professional equipment</b>	<b>1,41</b>	<b>140,5</b>	<b>146,7</b>	<b>156,5</b>	<b>143,9</b>	<b>140,7</b>	<b>-2,2</b>
Radio, television and communication apparatus	0,90	158,1	168,7	183,7	161,5	158,3	-2,0
Professional equipment	0,51	109,2	107,4	108,1	112,4	109,4	-2,7
<b>Motor vehicles, parts and accessories and other transport equipment</b>	<b>7,39</b>	<b>106,5</b>	<b>109,1</b>	<b>101,9</b>	<b>104,4</b>	<b>105,2</b>	<b>0,8</b>
Motor vehicles	2,98	119,2	126,7	110,6	114,3	118,8	3,9
Bodies for motor vehicles, trailers and semi-trailers	0,43	113,0	114,4	106,7	124,6	110,2	-11,6
Parts and accessories	2,77	94,2	93,8	90,1	94,0	93,9	-0,1
Other transport equipment	1,21	101,0	98,7	105,7	96,5	95,9	-0,6
<b>Furniture and other manufacturing</b>	<b>3,61</b>	<b>89,4</b>	<b>84,8</b>	<b>90,5</b>	<b>81,1</b>	<b>91,8</b>	<b>13,2</b>
Furniture	1,08	106,7	105,4	107,0	100,2	99,1	-1,1
Other manufacturing groups	2,53	82,0	75,9	83,4	72,9	88,6	21,5
<b>Total</b>	<b>100</b>	<b>106,6</b>	<b>105,2</b>	<b>107,3</b>	<b>105,4</b>	<b>106,8</b>	<b>1,3</b>

**Table 8 – Manufacturing sales at current prices (R million)**

Month	2010	2011	2012	2013	2014	2015 <sup>1</sup>	2016 <sup>1</sup>
Jan	90 215	95 994	107 218	116 532	130 303	129 333	132 985
Feb	101 983	111 651	125 750	131 788	146 300	143 332	154 978
Mar	115 516	126 331	133 374	137 740	151 487	161 661	
Apr	101 853	108 005	117 453	133 321	143 553	142 263	
May	109 489	117 657	130 302	141 196	148 043	153 030	
Jun	113 772	122 233	130 849	139 275	155 933	157 801	
Jul	113 046	113 051	127 702	146 362	145 849	158 167	
Aug	110 779	125 128	134 503	143 958	156 037	156 112	
Sep	113 369	133 135	131 890	140 221	162 333	166 634	
Oct	121 878	133 901	144 549	156 327	175 379	172 704	
Nov	126 703	139 235	153 267	162 140	170 409	173 476	
Dec	104 635	117 662	123 569	140 451	148 058	150 798	
<b>Total</b>	<b>1 323 238</b>	<b>1 443 983</b>	<b>1 560 426</b>	<b>1 689 311</b>	<b>1 833 684</b>	<b>1 865 311</b>	

<sup>1</sup> The latest three months are preliminary.

**Table 9 – Year-on-year percentage change in manufacturing sales at current prices**

Month	2011	2012	2013	2014	2015	2016	2016 year-to-date
Jan	6,4	11,7	8,7	11,8	-0,7	2,8	2,8
Feb	9,5	12,6	4,8	11,0	-2,0	8,1	5,6
Mar	9,4	5,6	3,3	10,0	6,7		
Apr	6,0	8,7	13,5	7,7	-0,9		
May	7,5	10,7	8,4	4,8	3,4		
Jun	7,4	7,0	6,4	12,0	1,2		
Jul	0,0	13,0	14,6	-0,4	8,4		
Aug	13,0	7,5	7,0	8,4	0,0		
Sep	17,4	-0,9	6,3	15,8	2,6		
Oct	9,9	8,0	8,1	12,2	-1,5		
Nov	9,9	10,1	5,8	5,1	1,8		
Dec	12,4	5,0	13,7	5,4	1,9		
<b>Total</b>	<b>9,1</b>	<b>8,1</b>	<b>8,3</b>	<b>8,5</b>	<b>1,7</b>		

**Table 10 – Seasonally adjusted manufacturing sales at current prices**

Month	R million				Month-on-month % change			
	2013	2014	2015	2016	2013	2014	2015	2016
Jan	135 493	150 871	151 864	157 921	1,5	1,2	-2,4	1,0
Feb	137 364	152 492	149 721	159 006	1,4	1,1	-1,4	0,7
Mar	137 042	147 167	156 101		-0,2	-3,5	4,3	
Apr	138 566	153 335	151 816		1,1	4,2	-2,7	
May	140 354	148 786	155 288		1,3	-3,0	2,3	
Jun	139 132	154 822	155 322		-0,9	4,1	0,0	
Jul	145 264	144 434	156 284		4,4	-6,7	0,6	
Aug	141 381	154 483	155 599		-2,7	7,0	-0,4	
Sep	135 834	155 735	159 100		-3,9	0,8	2,3	
Oct	142 721	160 200	159 104		5,1	2,9	0,0	
Nov	145 734	155 081	156 685		2,1	-3,2	-1,5	
Dec	149 049	155 592	156 329		2,3	0,3	-0,2	

**Table 11 – Manufacturing sales at current prices by division and major group (R million)**

Manufacturing division and major group	Sep-15	Oct-15	Nov-15	<sup>1</sup> Dec-15	<sup>1</sup> Jan-16	<sup>1</sup> Feb-16
<b>Food and beverages</b>	<b>37 693</b>	<b>38 312</b>	<b>39 764</b>	<b>44 943</b>	<b>32 212</b>	<b>34 338</b>
Meat, fish, fruit, etc.	10 267	10 369	10 965	11 802	8 441	9 310
Dairy products	3 312	3 654	3 461	3 721	3 089	3 173
Grain mill products	5 802	5 830	6 137	6 187	5 638	5 738
Other food products	7 280	7 489	7 626	7 465	6 712	6 372
Beverages	11 032	10 970	11 574	15 769	8 332	9 745
<b>Textiles, clothing, leather and footwear</b>	<b>4 475</b>	<b>5 062</b>	<b>5 082</b>	<b>3 490</b>	<b>3 181</b>	<b>4 342</b>
Textiles	648	657	692	428	482	655
Other textile products	1 168	1 469	1 345	856	912	1 230
Knitted, crocheted articles	199	229	231	136	145	197
Wearing apparel	1 358	1 531	1 612	1 153	768	1 174
Leather and leather products	645	625	628	509	514	616
Footwear	458	552	574	408	359	470
<b>Wood and wood products, paper, publishing and printing</b>	<b>13 631</b>	<b>13 231</b>	<b>13 993</b>	<b>11 704</b>	<b>10 621</b>	<b>11 993</b>
Sawmilling and planing of wood	1 081	1 041	904	878	745	905
Products of wood	1 818	1 836	1 915	1 312	1 367	1 674
Paper and paper products	6 587	5 761	6 141	5 788	5 377	5 499
Publishing	1 773	1 929	2 048	1 713	1 354	1 640
Printing, recorded media	2 371	2 664	2 985	2 012	1 778	2 275
<b>Petroleum, chemical products, rubber and plastic products</b>	<b>37 974</b>	<b>40 201</b>	<b>38 616</b>	<b>33 997</b>	<b>31 908</b>	<b>33 140</b>
Coke, petroleum products and nuclear fuel	12 646	13 811	12 300	12 245	11 267	9 533
Basic chemicals	8 122	8 485	7 844	6 555	6 907	7 484
Other chemical products	10 164	10 006	10 401	9 460	8 022	9 222
Rubber products	1 391	1 562	1 539	1 025	1 101	1 405
Plastic products	5 650	6 336	6 532	4 712	4 611	5 496
<b>Glass and non-metallic mineral products</b>	<b>5 123</b>	<b>5 303</b>	<b>5 380</b>	<b>3 420</b>	<b>3 522</b>	<b>4 421</b>
Glass and glass products	887	972	1 037	724	633	684
Non-metallic mineral products	4 236	4 331	4 343	2 696	2 889	3 737
<b>Basic iron and steel, non-ferrous metal products, metal products and machinery</b>	<b>33 755</b>	<b>34 462</b>	<b>34 066</b>	<b>26 904</b>	<b>26 899</b>	<b>33 560</b>
Basic iron and steel products	9 372	9 226	8 677	6 394	8 098	9 046
Non-ferrous metal products	6 925	7 932	7 620	7 324	6 962	8 210
Structural metal products	3 029	3 060	3 021	2 262	2 136	2 976
Other fabricated metal products	5 837	5 903	5 882	3 737	4 117	5 419
General purpose machinery	2 896	2 935	3 022	2 429	1 967	2 687
Special purpose machinery	4 792	4 393	4 807	4 045	2 894	4 358
Household appliances	904	1 012	1 036	713	726	865
<b>Electrical machinery</b>	<b>5 558</b>	<b>4 938</b>	<b>5 813</b>	<b>4 078</b>	<b>3 712</b>	<b>5 154</b>
<b>Radio, television and communication apparatus and professional equipment</b>	<b>1 923</b>	<b>1 970</b>	<b>2 347</b>	<b>1 835</b>	<b>1 442</b>	<b>1 881</b>
Radio, television and communication apparatus	1 191	1 189	1 573	1 166	874	1 131
Professional equipment	733	781	774	669	568	750
<b>Motor vehicles, parts and accessories and other transport equipment</b>	<b>21 329</b>	<b>23 413</b>	<b>22 938</b>	<b>15 318</b>	<b>16 044</b>	<b>21 187</b>
Motor vehicles	11 148	12 859	12 414	8 527	7 868	11 327
Bodies for motor vehicles, trailers and semi-trailers	854	898	990	496	580	764
Parts and accessories	6 214	6 864	6 878	3 359	5 485	6 687
Other transport equipment	3 113	2 792	2 655	2 936	2 112	2 409
<b>Furniture and other manufacturing</b>	<b>5 172</b>	<b>5 812</b>	<b>5 477</b>	<b>5 109</b>	<b>3 443</b>	<b>4 963</b>
Furniture	1 277	1 531	1 530	1 033	697	1 021
Other manufacturing groups	3 895	4 281	3 946	4 076	2 746	3 943
<b>Total</b>	<b>166 634</b>	<b>172 704</b>	<b>173 476</b>	<b>150 798</b>	<b>132 985</b>	<b>154 978</b>

<sup>1</sup> The latest three months are preliminary.

**Table 12 – Year-on-year percentage change in manufacturing sales at current prices by division and major group**

Manufacturing division and major group	Sep-15	Oct-15	Nov-15	Dec-15	Jan-16	Feb-16
<b>Food and beverages</b>	<b>8,9</b>	<b>6,8</b>	<b>12,7</b>	<b>12,1</b>	<b>7,9</b>	<b>11,9</b>
Meat, fish, fruit, etc.	8,7	10,0	17,3	12,3	11,7	15,6
Dairy products	8,5	8,3	9,0	7,2	-0,8	16,4
Grain mill products	5,5	5,8	14,7	15,2	18,6	21,7
Other food products	7,3	4,8	2,9	9,5	17,2	1,3
Beverages	12,3	5,2	15,6	13,4	-4,2	9,5
<b>Textiles, clothing, leather and footwear</b>	<b>2,1</b>	<b>1,6</b>	<b>3,0</b>	<b>-2,0</b>	<b>4,1</b>	<b>9,1</b>
Textiles	6,6	-4,6	5,8	6,7	7,6	11,0
Other textile products	-3,7	3,9	0,6	-9,1	-1,3	5,7
Knitted, crocheted articles	-6,1	0,9	7,9	4,6	0,0	4,8
Wearing apparel	5,3	5,1	2,0	0,0	-1,8	9,1
Leather and leather products	17,9	3,6	9,0	-7,6	4,3	0,7
Footwear	-10,7	-7,1	0,0	5,7	35,5	34,7
<b>Wood and wood products, paper, publishing and printing</b>	<b>7,2</b>	<b>2,2</b>	<b>3,5</b>	<b>3,7</b>	<b>11,8</b>	<b>10,2</b>
Sawmilling and planing of wood	29,2	12,7	2,7	30,3	3,5	-1,0
Products of wood	2,8	-0,5	4,8	12,8	9,9	14,1
Paper and paper products	14,5	6,3	7,1	3,9	22,3	11,6
Publishing	-3,9	-4,2	-2,2	-4,0	4,8	8,6
Printing, recorded media	-5,8	-2,8	0,1	-3,7	-3,5	10,3
<b>Petroleum, chemical products, rubber and plastic products</b>	<b>4,0</b>	<b>-8,0</b>	<b>-10,6</b>	<b>-5,5</b>	<b>1,2</b>	<b>5,1</b>
Coke, petroleum products and nuclear fuel	5,4	-14,3	-23,1	-19,8	-9,8	-15,4
Basic chemicals	-4,2	-14,9	-20,5	-11,2	5,4	25,0
Other chemical products	12,3	3,9	7,5	20,6	11,9	14,1
Rubber products	0,7	-0,6	-1,5	3,5	4,1	5,1
Plastic products	0,6	-1,0	7,2	4,9	8,2	13,3
<b>Glass and non-metallic mineral products</b>	<b>0,1</b>	<b>-2,9</b>	<b>5,5</b>	<b>1,5</b>	<b>4,9</b>	<b>2,6</b>
Glass and glass products	6,2	6,7	11,5	8,2	5,9	-0,7
Non-metallic mineral products	-1,1	-4,8	4,2	-0,1	4,7	3,2
<b>Basic iron and steel, non-ferrous metal products, metal products and machinery</b>	<b>-2,6</b>	<b>-5,7</b>	<b>-2,9</b>	<b>-5,8</b>	<b>-2,1</b>	<b>4,8</b>
Basic iron and steel products	-10,2	-12,1	-8,9	-20,9	-15,0	-1,1
Non-ferrous metal products	-8,8	2,5	-4,1	6,1	13,4	18,8
Structural metal products	15,2	-5,4	-1,0	8,1	7,8	1,1
Other fabricated metal products	-0,3	-2,1	0,1	-5,2	3,0	5,7
General purpose machinery	-5,8	-14,0	-5,5	-10,8	-11,1	-4,0
Special purpose machinery	13,2	-5,5	7,7	-4,3	-1,2	5,8
Household appliances	7,2	1,3	0,4	22,9	4,3	-11,5
<b>Electrical machinery</b>	<b>9,8</b>	<b>0,4</b>	<b>18,8</b>	<b>4,8</b>	<b>7,3</b>	<b>10,4</b>
<b>Radio, television and communication apparatus and professional equipment</b>	<b>-2,1</b>	<b>-3,1</b>	<b>12,4</b>	<b>9,4</b>	<b>34,0</b>	<b>27,5</b>
Radio, television and communication apparatus	-3,2	-12,0	17,3	10,8	56,9	37,4
Professional equipment	0,0	14,7	3,5	6,7	9,4	15,0
<b>Motor vehicles, parts and accessories and other transport equipment</b>	<b>-2,3</b>	<b>0,1</b>	<b>9,2</b>	<b>3,6</b>	<b>-2,1</b>	<b>11,4</b>
Motor vehicles	-7,0	-0,9	7,8	9,8	-7,8	14,8
Bodies for motor vehicles, trailers and semi-trailers	-2,8	-7,7	13,8	-8,3	10,3	-3,3
Parts and accessories	-1,7	0,7	5,5	-13,5	0,5	10,7
Other transport equipment	17,4	6,3	26,4	12,9	12,8	4,1
<b>Furniture and other manufacturing</b>	<b>-5,0</b>	<b>5,1</b>	<b>3,4</b>	<b>4,8</b>	<b>-5,3</b>	<b>4,1</b>
Furniture	6,5	3,1	7,4	-1,9	-8,4	-5,8
Other manufacturing groups	-8,2	5,9	1,9	6,7	-4,5	7,0
<b>Total</b>	<b>2,6</b>	<b>-1,5</b>	<b>1,8</b>	<b>1,9</b>	<b>2,8</b>	<b>8,1</b>

**Table 13 – Contribution of each division and major group to the year-on-year percentage change in manufacturing sales at current prices (percentage points)**

Manufacturing division and major group	Sep-15	Oct-15	Nov-15	Dec-15	Jan-16	Feb-16
<b>Food and beverages</b>	<b>1,9</b>	<b>1,4</b>	<b>2,6</b>	<b>3,3</b>	<b>1,8</b>	<b>2,5</b>
Meat, fish, fruit, etc.	0,5	0,5	0,9	0,9	0,7	0,9
Dairy products	0,2	0,2	0,2	0,2	0,0	0,3
Grain mill products	0,2	0,2	0,5	0,6	0,7	0,7
Other food products	0,3	0,2	0,1	0,4	0,8	0,1
Beverages	0,7	0,3	0,9	1,3	-0,3	0,6
<b>Textiles, clothing, leather and footwear</b>	<b>0,1</b>	<b>0,0</b>	<b>0,1</b>	<b>0,0</b>	<b>0,1</b>	<b>0,3</b>
Textiles	0,0	0,0	0,0	0,0	0,0	0,0
Other textile products	0,0	0,0	0,0	-0,1	0,0	0,0
Knitted, crocheted articles	0,0	0,0	0,0	0,0	0,0	0,0
Wearing apparel	0,0	0,0	0,0	0,0	0,0	0,1
Leather and leather products	0,1	0,0	0,0	0,0	0,0	0,0
Footwear	0,0	0,0	0,0	0,0	0,1	0,1
<b>Wood and wood products, paper, publishing and printing</b>	<b>0,6</b>	<b>0,2</b>	<b>0,3</b>	<b>0,3</b>	<b>0,9</b>	<b>0,8</b>
Sawmilling and planing of wood	0,2	0,1	0,0	0,1	0,0	0,0
Products of wood	0,0	0,0	0,1	0,1	0,1	0,1
Paper and paper products	0,5	0,2	0,2	0,1	0,8	0,4
Publishing	0,0	0,0	0,0	0,0	0,0	0,1
Printing, recorded media	-0,1	0,0	0,0	-0,1	0,0	0,1
<b>Petroleum, chemical products, rubber and plastic products</b>	<b>0,9</b>	<b>-2,0</b>	<b>-2,7</b>	<b>-1,3</b>	<b>0,3</b>	<b>1,1</b>
Coke, petroleum products and nuclear fuel	0,4	-1,3	-2,2	-2,0	-0,9	-1,2
Basic chemicals	-0,2	-0,8	-1,2	-0,6	0,3	1,0
Other chemical products	0,7	0,2	0,4	1,1	0,7	0,8
Rubber products	0,0	0,0	0,0	0,0	0,0	0,0
Plastic products	0,0	0,0	0,3	0,1	0,3	0,5
<b>Glass and non-metallic mineral products</b>	<b>0,0</b>	<b>-0,1</b>	<b>0,2</b>	<b>0,0</b>	<b>0,1</b>	<b>0,1</b>
Glass and glass products	0,0	0,0	0,1	0,0	0,0	0,0
Non-metallic mineral products	0,0	-0,1	0,1	0,0	0,1	0,1
<b>Basic iron and steel, non-ferrous metal products, metal products and machinery</b>	<b>-0,6</b>	<b>-1,2</b>	<b>-0,6</b>	<b>-1,1</b>	<b>-0,4</b>	<b>1,1</b>
Basic iron and steel products	-0,7	-0,7	-0,5	-1,1	-1,1	-0,1
Non-ferrous metal products	-0,4	0,1	-0,2	0,3	0,6	0,9
Structural metal products	0,2	-0,1	0,0	0,1	0,1	0,0
Other fabricated metal products	0,0	-0,1	0,0	-0,1	0,1	0,2
General purpose machinery	-0,1	-0,3	-0,1	-0,2	-0,2	-0,1
Special purpose machinery	0,3	-0,1	0,2	-0,1	0,0	0,2
Household appliances	0,0	0,0	0,0	0,1	0,0	-0,1
<b>Electrical machinery</b>	<b>0,3</b>	<b>0,0</b>	<b>0,5</b>	<b>0,1</b>	<b>0,2</b>	<b>0,3</b>
<b>Radio, television and communication apparatus and professional equipment</b>	<b>0,0</b>	<b>0,0</b>	<b>0,2</b>	<b>0,1</b>	<b>0,3</b>	<b>0,3</b>
Radio, television and communication apparatus	0,0	-0,1	0,1	0,1	0,2	0,2
Professional equipment	0,0	0,1	0,0	0,0	0,0	0,1
<b>Motor vehicles, parts and accessories and other transport equipment</b>	<b>-0,3</b>	<b>0,0</b>	<b>1,1</b>	<b>0,4</b>	<b>-0,3</b>	<b>1,5</b>
Motor vehicles	-0,5	-0,1	0,5	0,5	-0,5	1,0
Bodies for motor vehicles, trailers and semi-trailers	0,0	0,0	0,1	0,0	0,0	0,0
Parts and accessories	-0,1	0,0	0,2	-0,4	0,0	0,5
Other transport equipment	0,3	0,1	0,3	0,2	0,2	0,1
<b>Furniture and other manufacturing</b>	<b>-0,2</b>	<b>0,2</b>	<b>0,1</b>	<b>0,2</b>	<b>-0,1</b>	<b>0,1</b>
Furniture	0,0	0,0	0,1	0,0	0,0	0,0
Other manufacturing groups	-0,2	0,1	0,0	0,2	-0,1	0,2
<b>Total</b>	<b>2,6</b>	<b>-1,5</b>	<b>1,8</b>	<b>1,9</b>	<b>2,8</b>	<b>8,1</b>

**Table 14 – Seasonally adjusted manufacturing sales at current prices by division and major group (R million)**

Manufacturing division and major group	Oct-15	Nov-15	Dec-15	Jan-16	Feb-16	Month-on-month % change
<b>Food and beverages</b>	<b>36 044</b>	<b>36 492</b>	<b>37 130</b>	<b>36 858</b>	<b>36 443</b>	<b>-1,1</b>
Meat, fish, fruit, etc.	9 943	10 078	10 356	10 246	10 164	-0,8
Dairy products	3 312	3 320	3 347	3 223	3 324	3,1
Grain mill products	5 775	5 927	6 089	6 150	6 239	1,4
Other food products	6 919	6 839	7 104	7 554	6 875	-9,0
Beverages	10 096	10 328	10 233	9 685	9 841	1,6
<b>Textiles, clothing, leather and footwear</b>	<b>4 330</b>	<b>4 250</b>	<b>4 252</b>	<b>4 390</b>	<b>4 334</b>	<b>-1,3</b>
Textiles	580	611	620	621	609	-1,9
Other textile products	1 250	1 165	1 112	1 204	1 176	-2,3
Knitted, crocheted articles	204	203	193	201	191	-5,0
Wearing apparel	1 287	1 267	1 287	1 202	1 246	3,7
Leather and leather products	582	582	576	583	585	0,3
Footwear	428	422	463	578	527	-8,8
<b>Wood and wood products, paper, publishing and printing</b>	<b>12 064</b>	<b>12 132</b>	<b>12 265</b>	<b>12 589</b>	<b>12 416</b>	<b>-1,4</b>
Sawmilling and planing of wood	938	844	981	888	913	2,8
Products of wood	1 606	1 632	1 660	1 716	1 715	-0,1
Paper and paper products	5 670	5 670	5 722	6 220	5 769	-7,3
Publishing	1 637	1 669	1 693	1 633	1 684	3,1
Printing, recorded media	2 213	2 317	2 210	2 133	2 335	9,5
<b>Petroleum, chemical products, rubber and plastic products</b>	<b>37 077</b>	<b>34 943</b>	<b>35 618</b>	<b>35 778</b>	<b>35 825</b>	<b>0,1</b>
Coke, petroleum products and nuclear fuel	14 074	12 285	11 759	11 368	11 302	-0,6
Basic chemicals	7 251	6 620	7 168	7 804	8 043	3,1
Other chemical products	8 958	9 170	9 856	9 645	9 595	-0,5
Rubber products	1 411	1 378	1 339	1 338	1 317	-1,6
Plastic products	5 383	5 490	5 495	5 623	5 568	-1,0
<b>Glass and non-metallic mineral products</b>	<b>4 585</b>	<b>4 663</b>	<b>4 483</b>	<b>4 695</b>	<b>4 573</b>	<b>-2,6</b>
Glass and glass products	791	804	771	764	738	-3,4
Non-metallic mineral products	3 794	3 859	3 712	3 931	3 835	-2,4
<b>Basic iron and steel, non-ferrous metal products, metal products and machinery</b>	<b>32 075</b>	<b>31 367</b>	<b>31 482</b>	<b>32 439</b>	<b>33 162</b>	<b>2,2</b>
Basic iron and steel products	8 953	8 449	8 227	8 612	8 941	3,8
Non-ferrous metal products	7 584	7 146	7 585	7 760	8 213	5,8
Structural metal products	2 683	2 686	2 836	2 778	2 756	-0,8
Other fabricated metal products	5 273	5 221	4 965	5 446	5 356	-1,7
General purpose machinery	2 540	2 681	2 687	2 670	2 793	4,6
Special purpose machinery	4 151	4 276	4 252	4 263	4 246	-0,4
Household appliances	890	907	930	909	857	-5,7
<b>Electrical machinery</b>	<b>4 638</b>	<b>5 172</b>	<b>5 132</b>	<b>4 987</b>	<b>4 944</b>	<b>-0,9</b>
<b>Radio, television and communication apparatus and professional equipment</b>	<b>1 809</b>	<b>1 958</b>	<b>1 924</b>	<b>1 873</b>	<b>1 834</b>	<b>-2,1</b>
Radio, television and communication apparatus	1 064	1 249	1 209	1 134	1 067	-5,9
Professional equipment	744	709	714	739	767	3,8
<b>Motor vehicles, parts and accessories and other transport equipment</b>	<b>21 233</b>	<b>20 685</b>	<b>18 824</b>	<b>19 608</b>	<b>20 640</b>	<b>5,3</b>
Motor vehicles	11 738	11 147	10 299	10 067	11 023	9,5
Bodies for motor vehicles, trailers and semi-trailers	765	813	698	917	731	-20,3
Parts and accessories	6 172	6 156	5 012	6 096	6 316	3,6
Other transport equipment	2 557	2 570	2 815	2 528	2 570	1,7
<b>Furniture and other manufacturing</b>	<b>5 250</b>	<b>5 025</b>	<b>5 218</b>	<b>4 705</b>	<b>4 834</b>	<b>2,7</b>
Furniture	1 182	1 163	1 164	1 114	1 093	-1,9
Other manufacturing groups	4 068	3 861	4 054	3 590	3 740	4,2
<b>Total</b>	<b>159 104</b>	<b>156 685</b>	<b>156 329</b>	<b>157 921</b>	<b>159 006</b>	<b>0,7</b>



## Survey information

- Introduction**
- 1 Statistics South Africa (Stats SA) conducts a monthly survey of the manufacturing industry, covering manufacturing enterprises. This statistical release contains the results of a sample drawn from the business sampling frame (BSF), with enhanced coverage of South African businesses (see 4). The release contains monthly indices of the volume of manufacturing production and monthly value of sales of manufactured products by division and major group.
  - 2 In accordance with international practice, the indices are usually re-based every five years to a new base year. The current base period of the index is 2010. Both estimated and seasonally adjusted figures are presented.
  - 3 In order to improve timeliness, some information for the latest month had to be estimated due to late response. These estimates will be revised in future statistical releases as soon as information becomes available.
  - 4 Stats SA is continuously updating its BSF, based on units registered for value added tax (VAT) and income tax (IT) obtained from the South African Revenue Service (SARS).
- Purpose of the survey**
- 5 The results of the monthly manufacturing production and sales survey are used to calculate the volume of manufacturing production indices in order to estimate the gross domestic product (GDP) and its components, which in turn are used to develop and monitor government policy. These indices provide an indicator of the real level of manufacturing activity in the economy.
- Special Data Dissemination Standard of the IMF**
- 6 The data in this statistical release adhere to the Special Data Dissemination Standard (SDDS) of the International Monetary Fund (IMF), which sets out standards on coverage, periodicity and timeliness of data, access by the public, integrity, and quality of the disseminated data.
- Scope of the survey**
- 7 This survey covers manufacturing enterprises, i.e. those conducting activities in -
    - the manufacturing, processing, making or packing of products;
    - the slaughtering of animals, including poultry; and
    - installation, assembly, completion, repair and related work.
- Classification**
- 8 The 1993 edition of the *Standard Industrial Classification of all Economic Activities (SIC)*, Fifth Edition, Report No. 09-90-02, was used to classify the statistical units in the survey. The SIC is based on the 1990 *International Standard Industrial Classification of all Economic Activities (ISIC)* with suitable adaptations for local conditions. Each enterprise is classified to an industry which reflects its predominant activity. Statistics in this publication are presented at SIC division (two digit) and major group (three digit) level.
- Collection rate**
- 9 The preliminary collection rate for the survey on manufacturing production and sales for February 2016 was 86,1%. The improved collection rate for January 2016 was 91,8%.
- Statistical unit**
- 10 The statistical unit for which information is compiled and published is an enterprise, defined as a legal unit or a combination of legal units that includes and directly controls all functions necessary to carry out its production activities. The statistical units are derived from and linked to the South African Revenue Service (SARS) administrative data.
- Revised figures**
- 11 Revised figures are mainly due to late submission of data to Stats SA, or respondents reporting revisions or corrections to their figures. Preliminary figures, as indicated in the relevant tables, are subject to change and when revised will not be indicated as such.

**Related publications** 12 Users may also wish to refer to the following publications available from Stats SA -

- *Bulletin of Statistics* issued quarterly; and
- *SA Statistics* issued annually.

**Rounding-off of figures** 13 Where necessary, the figures in the tables have been rounded off to the nearest digit shown. There may, therefore, be slight discrepancies between the sums of the constituent items and the totals shown.

**Historical data** 14 Historical manufacturing data are available on the Stats SA webpage. Click on the following link ([Time series data](#)) to access the data electronically.

**Past publications** 15 Past manufacturing releases are available on the Stats SA webpage. Click on the following link ([Past publications](#)) to access the releases electronically.

**Technical notes**

**Survey methodology and design**

- 1 The survey is conducted monthly. Questionnaires are sent to a sample of 3 027 enterprises from a population of 45 285 manufacturing enterprises. Completed questionnaires are required to be returned to Stats SA within 10 days after the end of the reference month. Fax and telephone reminders are used to follow up on non-respondents.
- 2 A stratified random sample was drawn at the Standard Industrial Classification (SIC) three-digit level in April 2015 from Stats SA’s business sampling frame (BSF). Strata were formed using a combination of the SIC and the measure of size classes for enterprises (see point 3 below).

The Neyman optimal allocation formula used to allocate samples to each stratum is given by a formula below:

$$n_h = \frac{N_h S_h}{\sum N_h S_h}$$

$N_h$  and  $S_h$  are the stratum population size and the stratum variance respectively.

**Class limits**

- 3 Each manufacturing major group is divided into four size groups. All large enterprises (size group one) are completely enumerated. Simple random sampling is applied to medium (size group two) and to small (size group three and four) enterprises. The total value of sales of manufactured products of large enterprises (size group one) in a major group is added to the weighted totals of size group two, three and four of that major group to reflect the total value of sales of the major group.

**Measure of size classes (Rand)**

Enterprise size	Size group	Lower limits	Upper limits
Very small	4	1 882 214	15 000 000
Small	3	15 000 001	39 000 000
Medium	2	39 000 001	153 000 000
Large	1	153 000 001	

**Sample weighting**

- 4 For those strata not completely enumerated, the weights to produce estimates are the inverse ratio of the sampling fraction, modified to take account of non-response in the survey. Stratum estimates are calculated and then aggregated with the completely enumerated stratum to form major group and division estimates. These procedures are consistent with international best practice.

**Index of the volume of manufacturing production**

5 The index of the volume of manufacturing production, also known as a production index, is a statistical measure of the change in the volume of production. The production index of a major group is the ratio between the volume of production of a major group in a given period and the volume of production of the same major group in the base period. The current base period is 2010. The production in the base period is set at 100.

**Calculation of production index**

6 The calculation of the monthly production indices is based on the value of sales of products and articles manufactured and change in monthly value of stocks of manufactured products, after the effect of price changes has been eliminated through deflation using appropriate indices of the production price index (PPI). For 38 of the 44 major groups in manufacturing, the value of production is calculated from the value of sales and stocks of manufactured products obtained from the monthly survey of manufacturing enterprises.

7 More direct indicators are used for the value of production of the following major groups:

- tobacco;
- coke and refined petroleum products;
- basic iron and steel products;
- basic precious and non-ferrous metal products;
- motor vehicles; and
- parts and accessories for motor vehicles.

The volume indices for these major groups are calculated on the basis of quantities. This method is used by the national statistical agencies of many other countries for petroleum products as the results are considered more satisfactory (mainly because these commodities are relatively homogeneous).

**Index weighting**

8 For indices, a weight is calculated for every major group according to the value added of the major group (i.e. output of a major group minus intermediate consumption) relative to the total value added of the manufacturing industry as a whole, based on the results of the most recent census of manufacturing, large sample survey (LSS) of the manufacturing industry or national accounts (NA) value added data. The production indices of all divisions are multiplied by the applicable weights and aggregated to produce the index for the total volume of manufacturing production. Weights between census/LSS/NA years are fixed. The table below reflects the period and the census/LSS/NA which were used as base year for the given period.

<b>Period</b>	<b>Source</b>
1998 to 2000	1996 Census of Manufacturing
2001 to 2004	2001 LSS
2005 to 2009	2005 LSS
2010 to 2015	NA

9 The weights reflect the importance of the major group/division to the total manufacturing industry. The weights change over time due to changes in the relative performance of industries, due to factors such as quality changes, changes in relative prices, and changes in customer preferences. New weights need to be calculated from time to time.

**Table E – Weights by division and major group**

Manufacturing divisions and major groups	Weights according to national accounts value added		
	2010	2011	2012 – 2015
<b>Food and beverages</b>	<b>22,08</b>	<b>23,82</b>	<b>24,44</b>
Meat, fish, fruit, etc.	4,41	5,19	5,39
Dairy products	2,22	2,30	1,78
Grain mill products	2,71	2,78	2,86
Other food products	6,34	7,12	7,73
Beverages	6,40	6,43	6,68
<b>Textiles, clothing, leather and footwear</b>	<b>3,45</b>	<b>2,92</b>	<b>3,17</b>
Textiles	0,68	0,84	0,74
Other textile products	0,43	0,39	0,47
Knitted, crocheted articles	0,08	0,08	0,10
Wearing apparel	1,55	0,99	1,19
Leather and leather products	0,22	0,19	0,28
Footwear	0,49	0,43	0,39
<b>Wood and wood products, paper, publishing and printing</b>	<b>9,30</b>	<b>9,46</b>	<b>12,65</b>
Sawmilling and planing of wood	0,82	0,82	1,83
Products of wood	1,66	1,76	2,55
Paper and paper products	3,18	3,26	4,89
Publishing	1,45	1,45	1,51
Printing, recorded media	2,19	2,17	1,87
<b>Petroleum, chemical products, rubber and plastic products</b>	<b>25,13</b>	<b>22,52</b>	<b>22,13</b>
Coke, petroleum products and nuclear fuel	7,97	6,32	7,77
Basic chemicals	5,81	4,85	3,81
Other chemical products	7,39	7,06	6,49
Rubber products	1,19	1,18	1,00
Plastic products	2,77	3,11	3,06
<b>Glass and non-metallic mineral products</b>	<b>4,91</b>	<b>4,42</b>	<b>3,91</b>
Glass and glass products	0,80	0,89	0,78
Non-metallic mineral products	4,11	3,53	3,13
<b>Basic iron and steel, non-ferrous metal products, metal products and machinery</b>	<b>20,30</b>	<b>20,40</b>	<b>19,59</b>
Basic iron and steel products	4,42	4,71	3,38
Non-ferrous metal products (including precious metals)	3,44	3,46	3,18
Structural metal products	1,87	2,21	1,89
Other fabricated metal products	3,84	3,89	4,40
General purpose machinery	2,36	2,44	2,44
Special purpose machinery	3,48	3,04	3,44
Household appliances	0,89	0,65	0,86
<b>Electrical machinery</b>	<b>2,44</b>	<b>2,37</b>	<b>1,70</b>
<b>Radio, television and communication apparatus and professional equipment</b>	<b>1,32</b>	<b>1,45</b>	<b>1,41</b>
Radio, television and communication apparatus	0,77	0,88	0,90
Professional equipment	0,55	0,57	0,51
<b>Motor vehicles, parts and accessories and other transport equipment</b>	<b>7,89</b>	<b>8,58</b>	<b>7,39</b>
Motor vehicles	3,21	3,84	2,98
Bodies for motor vehicles, trailers and semi-trailers	0,64	0,53	0,43
Parts and accessories	2,88	3,00	2,77
Other transport equipment	1,16	1,21	1,21
<b>Furniture and other manufacturing</b>	<b>3,18</b>	<b>4,06</b>	<b>3,61</b>
Furniture	0,94	1,05	1,08
Other manufacturing groups	2,24	3,01	2,53
<b>Total</b>	<b>100</b>	<b>100</b>	<b>100</b>

- Seasonal adjustment** 10 Seasonally adjusted estimates of all major groups are generated each month, using the X-12 Seasonal Adjustment Program developed by the US Bureau of the Census, 1968. Seasonal adjustment is a means of removing the estimated effects of normal seasonal variation from the series so that the effects of other influences on the series can be more clearly recognised. Seasonal adjustment does not aim to remove irregular or non-seasonal influences, which may be present in any particular month. Influences that are volatile or unsystematic can still make it difficult to interpret the movement of the series even after adjustment for seasonal variations. Therefore the month-to-month movements of seasonally adjusted estimates may not be reliable indicators of trend behaviour. The X-12-ARIMA procedure for manufacturing production and sales is described in more detail on the Stats SA website: [Click to Download Seasonal adjustment Manufacturing January 2015](#)
- Trend cycle** 11 The trend is the long-term pattern or movement of a time series. The X-12 Seasonal Adjustment Programme is used for smoothing seasonally adjusted estimates to estimates of the underlying trend.
- Reliability of estimates** 12 Data presented in this publication are based on information obtained from a sample and are, therefore, subject to sampling variability; that is, they may differ from the figures that would have been produced if the data had been obtained from all enterprises in the manufacturing industry in South Africa. Estimates are subject to sampling and non-sampling errors.
- 13 Inaccuracies may occur because of imperfections in reporting by enterprises and errors made in the collection and processing of the data. Inaccuracies of this kind are referred to as non-sampling errors. Every effort is made to minimise non-sampling errors by careful design of questionnaires, testing them in pilot studies, editing reported data and implementing efficient operating procedures. Fluctuations may occur in consecutive months as a result of seasonal and economic factors.
- Month-on-month percentage change** 14 The month-on-month percentage change in a variable for any given month is the change between that month and the previous month, expressed as a percentage of the latter.
- Year-on-year (annual) percentage change** 15 The year-on-year percentage change in a variable for any given period is the change between that period and the corresponding period of the previous year, expressed as a percentage of the latter.
- Index contribution (percentage points)** 16 The contribution (percentage points) of a major group or division to the total manufacturing production percentage change for a given period is calculated by multiplying the difference in the index of each major group or division by the weight of the major group or division and then dividing by the previous period total manufacturing index.
- Sales contribution (percentage points)** 17 The contribution (percentage points) of a division or major group to the percentage change in total manufacturing sales for a given period is calculated by multiplying the percentage change of each major group or division with its percentage contribution to the total sales of the previous period, divided by 100.

## Glossary

**Enterprise** The enterprise is a legal entity or a combination of legal units that includes and directly controls all functions necessary to carry out its production activities.

**Industry** An industry is made up of enterprises engaged in the same or similar kinds of economic activity. Industries are defined in the *System of National Accounts (SNA)* in the same way as in the *1993 Standard Industrial Classification of all Economic Activities*, Fifth Edition, Report No. 09-90-02 of January 1993 (SIC).

**Sales** Sales are the total value of sales and transfers-out of all own manufactured products/articles and the amounts received for installation, erection or assembly or other services rendered.

## Symbols and abbreviations

BSF	Business sampling frame
GDP	Gross domestic product
IMF	International Monetary Fund
ISIC	International Standard Industrial Classification
LSS	Large sample survey
NA	National accounts
PPI	Producer price index
Rm	R million
SIC	Standard Industrial Classification of all Economic Activities
SARS	South African Revenue Service
SDDS	Special Data Dissemination Standard
Stats SA	Statistics South Africa
VAT	Value added tax
*	Revised figures

## Technical enquiries

**Nicolai Claassen** Telephone number: (012) 310 8007  
Email: nicolaic@statssa.gov.za

**Gerda Bruwer** Telephone number: (012) 310 8249  
Email: gerdab@statssa.gov.za

## General information

Stats SA publishes approximately 300 different statistical releases each year. It is not economically viable to produce them in more than one of South Africa's eleven official languages. Since the releases are used extensively, not only locally but also by international economic and social-scientific communities, Stats SA releases are published in English.

Stats SA has copyright on this publication. Users may apply the information as they wish, provided that they acknowledge Stats SA as the source of the basic data wherever they process, apply, utilise, publish or distribute the data; and also that they specify that the relevant application and analysis (where applicable) result from their own processing of the data.

## Advance release calendar

An advance release calendar is disseminated on [www.statssa.gov.za](http://www.statssa.gov.za)

## Stats SA products

A complete set of Stats SA publications is available at the Stats SA Library and the following libraries:

National Library of South Africa, Pretoria Division  
National Library of South Africa, Cape Town Division  
Natal Society Library, Pietermaritzburg  
Library of Parliament, Cape Town  
Bloemfontein Public Library  
Johannesburg Public Library  
Eastern Cape Library Services, King William's Town  
Central Regional Library, Polokwane  
Central Reference Library, Mbombela  
Central Reference Collection, Kimberley  
Central Reference Library, Mmabatho

Stats SA also provides a subscription service.

## Electronic services

A large range of data is available via online services. For more details about our electronic data services, contact Stats SA's user information service at (012) 310 8600.

You can visit us on the Internet at: [www.statssa.gov.za](http://www.statssa.gov.za)

## General enquiries

User information services	Telephone number: (012) 310 8600 Email address: <a href="mailto:info@statssa.gov.za">info@statssa.gov.za</a>
Orders/subscription services	Telephone number: (012) 310 8044 Email: <a href="mailto:magdaj@statssa.gov.za">magdaj@statssa.gov.za</a>
Postal address	Private Bag X44, Pretoria, 0001

*Produced by Stats SA*