



The South Africa I know, the home I understand

# Statistical release

**P3041.2**

## Manufacturing: Production and sales (Preliminary)

**December 2015**

**Embargoed until:  
11 February 2016  
13:00**

**Enquiries:**

Gerda Bruwer  
Tel. (012) 310 8249

**Forthcoming issue:**

January 2016

**Expected release date**

10 March 2016

## Contents

|   |           |
|---|-----------|
| <b>Production: results for December 2015</b> .....  | <b>2</b>  |
| Table A – Key growth rates in the volume of manufacturing production .....  | 2         |
| Table B – Seasonally adjusted manufacturing production for the latest three months by division and major group (Base: 2010=100) .....                             | 3         |
| Figure 1 – Volume of manufacturing production (Base: 2010=100) .....  | 4         |
| Figure 2 – Volume of manufacturing production (Base: 2010=100): year-on-year percentage change .....  | 4         |
| <b>Sales: results for December 2015</b> .....   | <b>5</b>  |
| Table C – Key growth rates in manufacturing sales at current prices .....   | 5         |
| Table D – Seasonally adjusted manufacturing sales at current prices for the latest three months by division .....   | 5         |
| <b>Tables</b> .....   | <b>6</b>  |
| Table 1 – Index of the volume of manufacturing production (Base: 2010=100) .....  | 6         |
| Table 2 – Year-on-year percentage change in the volume of manufacturing production .....  | 6         |
| Table 3 – Seasonally adjusted volume of manufacturing production .....  | 6         |
| Table 4 – Index of the volume of manufacturing production by division and major group (Base: 2010=100) .....  | 7         |
| Table 5 – Year-on-year percentage change in the volume of manufacturing production by division and major group (Base: 2010=100) .....                             | 8         |
| Table 6 – Contribution of each division and major group to the year-on-year percentage change in the volume of manufacturing production (percentage points) ..... | 9         |
| Table 7 – Seasonally adjusted index of the volume of manufacturing production by division and major group (Base: 2010=100) .....                                  | 10        |
| Table 8 – Manufacturing sales at current prices (R million) .....   | 11        |
| Table 9 – Year-on-year percentage change in manufacturing sales at current prices .....   | 11        |
| Table 10 – Seasonally adjusted manufacturing sales at current prices .....  | 11        |
| Table 11 – Manufacturing sales at current prices by division and major group (R million) .....  | 12        |
| Table 12 – Year-on-year percentage change in manufacturing sales at current prices by division and major group .....  | 13        |
| Table 13 – Contribution of each division and major group to the year-on-year percentage change in manufacturing sales at current prices (percentage points) ..... | 14        |
| Table 14 – Seasonally adjusted manufacturing sales at current prices by division and major group (R million) .....  | 15        |
| <b>Survey information</b> .....   | <b>16</b> |
| <b>Technical notes</b> .....  | <b>17</b> |
| Table E – Weights by division and major group .....   | 19        |
| <b>Glossary</b> .....   | <b>21</b> |
| <b>Technical enquiries</b> .....  | <b>21</b> |
| <b>General information</b> .....  | <b>22</b> |

**Production: results for December 2015**

**Table A – Key growth rates in the volume of manufacturing production**

|  | <b>Jul-15</b> | <b>Aug-15</b> | <b>Sep-15</b> | <b>Oct-15</b> | <b>Nov-15</b> | <b>Dec-15</b> |
|--|---------------|---------------|---------------|---------------|---------------|---------------|
| Year-on-year % change, unadjusted                  | 5,2           | -0,4          | 1,3           | -2,3          | -1,2          | 0,4           |
| Month-on-month % change, seasonally adjusted       | 0,0           | 0,4           | 2,3           | -1,8          | -1,3          | 1,8           |
| 3-month % change, seasonally adjusted <sup>1</sup> | -1,5          | -0,4          | 1,4           | 1,6           | 0,8           | -0,6          |

<sup>1</sup> Percentage change between the previous 3 months and the 3 months ending in the month indicated.

Manufacturing production increased by 0,4% in December 2015 compared with December 2014. The largest positive contributions were made by the following divisions:

- food and beverages (4,4% and contributing 1,4 percentage points); and
- petroleum, chemical products, rubber and plastic products (2,1% and contributing 0,5 of a percentage point).

The largest negative contribution was made by the basic iron and steel, non-ferrous metal products, metal products and machinery division (-6,2% and contributing -1,1 percentage points) – see Tables 5 and 6.

In 2015, total manufacturing production showed no growth compared with 2014. The largest contributions were made by the following divisions:

- food and beverages (2,7% and contributing 0,7 of a percentage point); and
- basic iron and steel, non-ferrous metal products, metal products and machinery (-3,3% and contributing -0,6 of a percentage point).

Seasonally adjusted manufacturing production increased by 1,8% in December 2015 compared with November 2015. This followed month-on-month changes of -1,3% in November 2015 and -1,8% in October 2015 – see Table A.

Seasonally adjusted manufacturing production decreased by 0,6% in the fourth quarter of 2015 compared with the third quarter of 2015. Seven of the ten manufacturing divisions reported negative growth rates over this period.

The main negative contributors to the 0,6% decrease were the basic iron and steel, non-ferrous metal products, metal products and machinery division (-3,1% and contributing -0,6 of a percentage point) and the motor vehicles, parts and accessories and other transport equipment division (-5,2% and contributing -0,4 of a percentage point) – see Table B.

**Table B – Seasonally adjusted manufacturing production for the latest three months by division and major group (Base: 2010=100)**

| Manufacturing division and major group  | Weight (2012) | Jul – Sep 2015 | Oct – Dec 2015 | % change between Jul – Sep 2015 and Oct – Dec 2015 | Contribution (% points) to the total % change |
|---|---------------|----------------|----------------|--|---|
| <b>Food and beverages</b>   | <b>24,44</b>  | <b>113,4</b>   | <b>115,2</b>   | <b>1,6</b>   | <b>0,4</b>                                    |
| Meat, fish, fruit, etc.   | 5,39          | 119,0          | 123,1          | 3,4  | 0,2   |
| Dairy products  | 1,78          | 117,2          | 120,6          | 2,9  | 0,1   |
| Grain mill products   | 2,86          | 104,9          | 104,8          | -0,1   | 0,0   |
| Other food products   | 7,73          | 106,3          | 107,7          | 1,3  | 0,1   |
| Beverages   | 6,68          | 119,6          | 120,5          | 0,8  | 0,1   |
| <b>Textiles, clothing, leather and footwear</b>                                       | <b>3,17</b>   | <b>96,2</b>    | <b>94,8</b>    | <b>-1,5</b>  | <b>0,0</b>                                    |
| Textiles  | 0,74          | 85,1           | 82,3           | -3,3   | 0,0   |
| Other textile products  | 0,47          | 90,2           | 89,5           | -0,8   | 0,0   |
| Knitted, crocheted articles   | 0,10          | 56,6           | 51,1           | -9,7   | 0,0   |
| Wearing apparel   | 1,19          | 101,2          | 100,7          | -0,5   | 0,0   |
| Leather and leather products  | 0,28          | 124,8          | 116,4          | -6,7   | 0,0   |
| Footwear  | 0,39          | 98,2           | 102,4          | 4,3  | 0,0   |
| <b>Wood and wood products, paper, publishing and printing</b>                         | <b>12,65</b>  | <b>105,3</b>   | <b>103,4</b>   | <b>-1,8</b>  | <b>-0,2</b>                                   |
| Sawmilling and planing of wood  | 1,83          | 128,9          | 125,7          | -2,5   | -0,1  |
| Products of wood  | 2,55          | 103,8          | 101,2          | -2,5   | -0,1  |
| Paper and paper products  | 4,89          | 106,3          | 103,5          | -2,6   | -0,1  |
| Publishing  | 1,51          | 93,7           | 95,9           | 2,3  | 0,0   |
| Printing, recorded media  | 1,87          | 90,9           | 90,2           | -0,8   | 0,0   |
| <b>Petroleum, chemical products, rubber and plastic products</b>                      | <b>22,13</b>  | <b>108,5</b>   | <b>110,7</b>   | <b>2,0</b>   | <b>0,5</b>                                    |
| Coke, petroleum products and nuclear fuel   | 7,77          | 97,1           | 106,0          | 9,2  | 0,6   |
| Basic chemicals   | 3,81          | 119,6          | 113,2          | -5,4   | -0,2  |
| Other chemical products   | 6,49          | 119,4          | 118,5          | -0,8   | -0,1  |
| Rubber products   | 1,00          | 107,9          | 107,4          | -0,5   | 0,0   |
| Plastic products  | 3,06          | 101,2          | 104,2          | 3,0  | 0,1   |
| <b>Glass and non-metallic mineral products</b>  | <b>3,91</b>   | <b>99,4</b>    | <b>95,2</b>    | <b>-4,2</b>  | <b>-0,2</b>                                   |
| Glass and glass products  | 0,78          | 95,4           | 92,9           | -2,6   | 0,0   |
| Non-metallic mineral products   | 3,13          | 100,4          | 95,7           | -4,7   | -0,1  |
| <b>Basic iron and steel, non-ferrous metal products, metal products and machinery</b> | <b>19,59</b>  | <b>99,5</b>    | <b>96,4</b>    | <b>-3,1</b>  | <b>-0,6</b>                                   |
| Basic iron and steel products   | 3,38          | 83,7           | 84,2           | 0,6  | 0,0   |
| Non-ferrous metal products  | 3,18          | 93,2           | 91,3           | -2,0   | -0,1  |
| Structural metal products   | 1,89          | 83,7           | 77,7           | -7,2   | -0,1  |
| Other fabricated metal products   | 4,40          | 117,5          | 115,3          | -1,9   | -0,1  |
| General purpose machinery   | 2,44          | 84,4           | 78,5           | -7,0   | -0,1  |
| Special purpose machinery   | 3,44          | 115,0          | 109,6          | -4,7   | -0,2  |
| Household appliances  | 0,86          | 109,5          | 106,6          | -2,6   | 0,0   |
| <b>Electrical machinery</b>   | <b>1,70</b>   | <b>115,2</b>   | <b>113,9</b>   | <b>-1,1</b>  | <b>0,0</b>                                    |
| <b>Radio, television and communication apparatus and professional equipment</b>       | <b>1,41</b>   | <b>139,8</b>   | <b>150,1</b>   | <b>7,4</b>   | <b>0,1</b>                                    |
| Radio, television and communication apparatus   | 0,90          | 160,9          | 173,8          | 8,0  | 0,1   |
| Professional equipment  | 0,51          | 102,2          | 107,7          | 5,4  | 0,0   |
| <b>Motor vehicles, parts and accessories and other transport equipment</b>            | <b>7,39</b>   | <b>111,4</b>   | <b>105,6</b>   | <b>-5,2</b>  | <b>-0,4</b>                                   |
| Motor vehicles  | 2,98          | 132,5          | 118,7          | -10,4  | -0,4  |
| Bodies for motor vehicles, trailers and semi-trailers                                 | 0,43          | 115,9          | 109,8          | -5,3   | 0,0   |
| Parts and accessories   | 2,77          | 91,8           | 91,9           | 0,1  | 0,0   |
| Other transport equipment   | 1,21          | 102,3          | 103,0          | 0,7  | 0,0   |
| <b>Furniture and other manufacturing</b>  | <b>3,61</b>   | <b>91,6</b>    | <b>88,8</b>    | <b>-3,1</b>  | <b>-0,1</b>                                   |
| Furniture   | 1,08          | 107,1          | 107,5          | 0,4  | 0,0   |
| Other manufacturing groups  | 2,53          | 85,0           | 80,8           | -4,9   | -0,1  |
| <b>Total</b>  | <b>100</b>    | <b>107,0</b>   | <b>106,4</b>   | <b>-0,6</b>  | <b>-0,6</b>                                   |

Figure 1 – Volume of manufacturing production (Base: 2010=100)

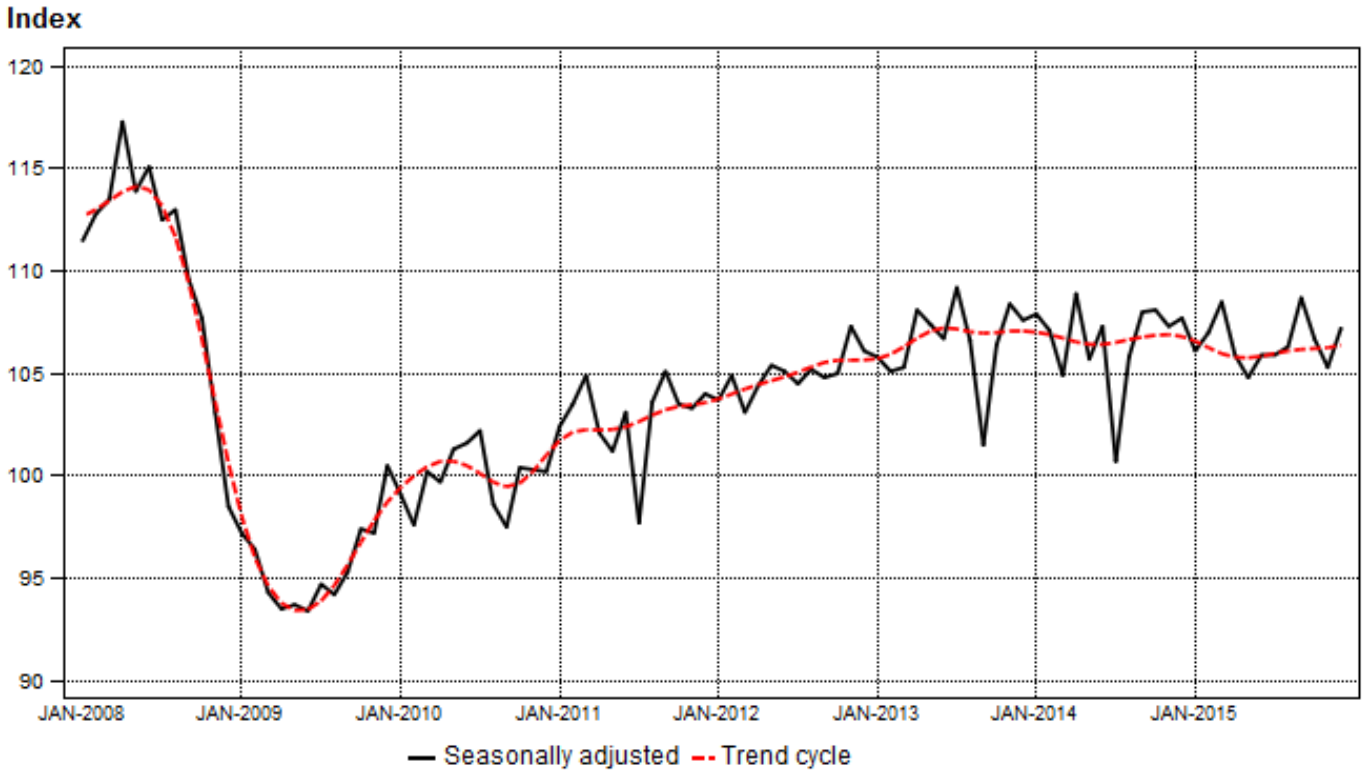
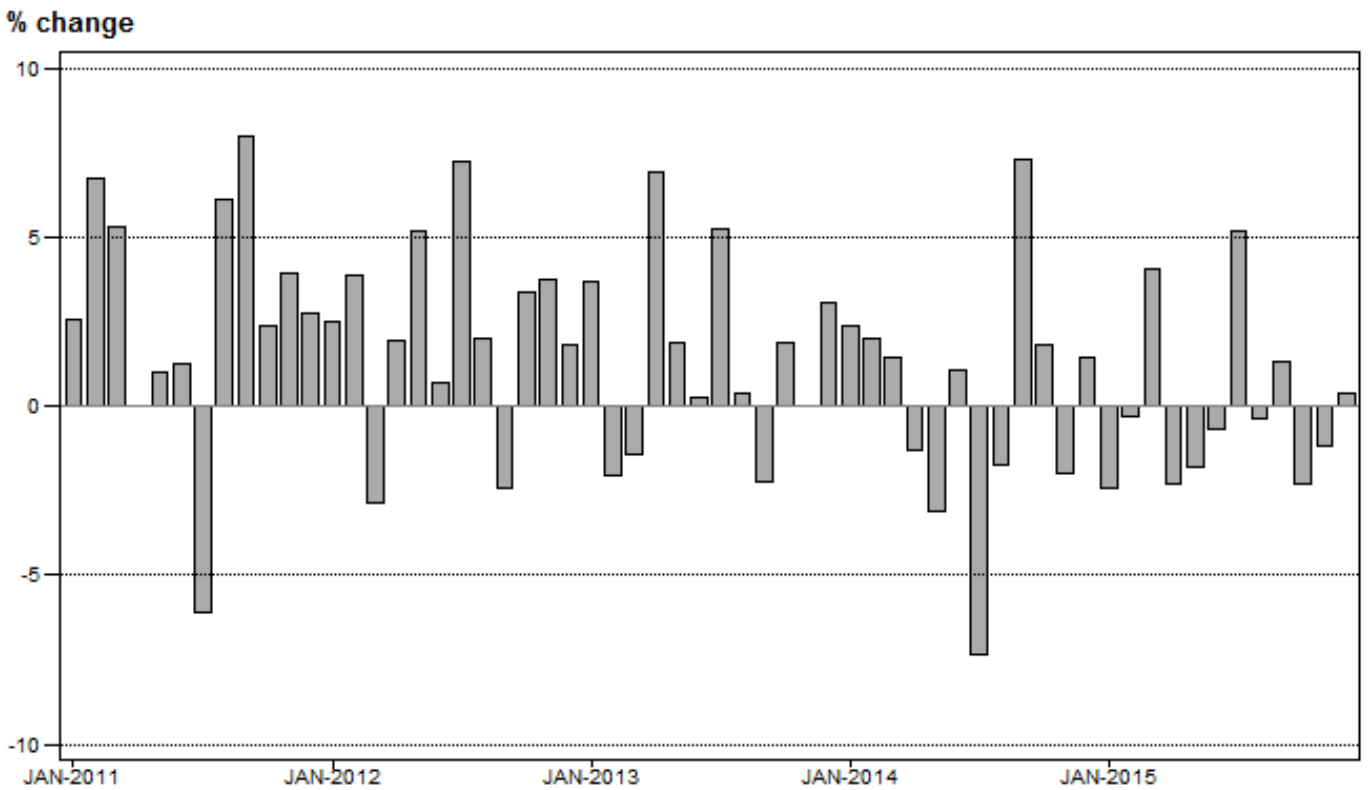


Figure 2 – Volume of manufacturing production (Base: 2010=100): year-on-year percentage change



**Sales: results for December 2015**

**Table C – Key growth rates in manufacturing sales at current prices**

|  | Jul-15 | Aug-15 | Sep-15 | Oct-15 | Nov-15 | Dec-15 |
|--|--------|--------|--------|--------|--------|--------|
| Year-on-year % change, unadjusted                  | 8,4    | 0,0    | 2,6    | -1,5   | 1,7    | 1,8    |
| Month-on-month % change, seasonally adjusted       | 0,7    | -0,3   | 2,2    | -0,1   | -1,7   | 0,1    |
| 3-month % change, seasonally adjusted <sup>1</sup> | 2,0    | 0,9    | 2,0    | 1,6    | 1,6    | 0,2    |

<sup>1</sup> Percentage change between the previous 3 months and the 3 months ending in the month indicated.

Seasonally adjusted manufacturing sales increased by 0,1% in December 2015 compared with November 2015. This followed month-on-month changes of -1,7% in November 2015 and -0,1% in October 2015 – see Table C.

**Table D – Seasonally adjusted manufacturing sales at current prices for the latest three months by division**

| Manufacturing division   | Jul – Sep 2015<br>(R million) | Oct – Dec 2015<br>(R million) | % change between Jul – Sep 2015 and Oct – Dec 2015 | Contribution (% points) to the total % change |
|--|-------------------------------|-------------------------------|--|---|
| Food and beverages   | 107 772                       | 109 869                       | 1,9  | 0,4   |
| Textiles, clothing, leather and footwear                                       | 12 912                        | 12 864                        | -0,4   | 0,0   |
| Wood and wood products, paper, publishing and printing                         | 36 467                        | 36 404                        | -0,2   | 0,0   |
| Petroleum, chemical products, rubber and plastic products                      | 107 595                       | 107 944                       | 0,3  | 0,1   |
| Glass and non-metallic mineral products  | 13 880                        | 13 723                        | -1,1   | 0,0   |
| Basic iron and steel, non-ferrous metal products, metal products and machinery | 96 364                        | 94 269                        | -2,2   | -0,4  |
| Electrical machinery   | 15 238                        | 14 988                        | -1,6   | -0,1  |
| Radio, television and communication apparatus and professional equipment       | 5 118                         | 5 727                         | 11,9   | 0,1   |
| Motor vehicles, parts and accessories and other transport equipment            | 61 463                        | 61 020                        | -0,7   | -0,1  |
| Furniture and other manufacturing  | 14 532                        | 15 597                        | 7,3  | 0,2   |
| <b>Total</b>   | <b>471 342</b>                | <b>472 405</b>                | <b>0,2</b>   | <b>0,2</b>                                    |

**PJ Lehohla**  
**Statistician-General**

**Tables**

**Table 1 – Index of the volume of manufacturing production (Base: 2010=100)**

| Month        | 2009        | 2010         | 2011         | 2012         | 2013         | 2014         | 2015 <sup>1</sup> |
|--------------|-------------|--------------|--------------|--------------|--------------|--------------|-------------------|
| Jan          | 82,7        | 84,5         | 86,7         | 88,9         | 92,2         | 94,4         | 92,1              |
| Feb          | 91,1        | 92,2         | 98,4         | 102,2        | 100,1        | 102,1        | 101,8             |
| Mar          | 97,6        | 103,8        | 109,3        | 106,2        | 104,7        | 106,2        | 110,5             |
| Apr          | 86,6        | 93,4         | 93,4         | 95,2         | 101,8        | 100,5        | 98,2              |
| May          | 94,2        | 100,6        | 101,6        | 106,9        | 108,9        | 105,5        | 103,6             |
| Jun          | 94,5        | 102,9        | 104,2        | 104,9        | 105,2        | 106,3        | 105,6             |
| Jul          | 98,2        | 105,3        | 98,9         | 106,1        | 111,7        | 103,5        | 108,9             |
| Aug          | 96,3        | 101,6        | 107,8        | 110,0        | 110,4        | 108,5        | 108,1             |
| Sep          | 99,9        | 102,2        | 110,4        | 107,7        | 105,3        | 113,0        | 114,5             |
| Oct          | 108,4       | 110,3        | 112,9        | 116,7        | 118,9        | 121,1        | 118,3             |
| Nov          | 107,9       | 112,2        | 116,6        | 121,0        | 121,0        | 118,6        | 117,2             |
| Dec          | 89,2        | 91,0         | 93,5         | 95,2         | 98,1         | 99,5         | 99,9              |
| <b>Total</b> | <b>95,6</b> | <b>100,0</b> | <b>102,8</b> | <b>105,1</b> | <b>106,5</b> | <b>106,6</b> | <b>106,6</b>      |

<sup>1</sup> The latest three months are preliminary.

**Table 2 – Year-on-year percentage change in the volume of manufacturing production**

| Month        | 2010       | 2011       | 2012       | 2013       | 2014       | 2015       | 2015<br>year-to-date |
|--------------|------------|------------|------------|------------|------------|------------|----------------------|
| Jan          | 2,2        | 2,6        | 2,5        | 3,7        | 2,4        | -2,4       | -2,4                 |
| Feb          | 1,2        | 6,7        | 3,9        | -2,1       | 2,0        | -0,3       | -1,3                 |
| Mar          | 6,4        | 5,3        | -2,8       | -1,4       | 1,4        | 4,0        | 0,6                  |
| Apr          | 7,9        | 0,0        | 1,9        | 6,9        | -1,3       | -2,3       | -0,1                 |
| May          | 6,8        | 1,0        | 5,2        | 1,9        | -3,1       | -1,8       | -0,5                 |
| Jun          | 8,9        | 1,3        | 0,7        | 0,3        | 1,0        | -0,7       | -0,5                 |
| Jul          | 7,2        | -6,1       | 7,3        | 5,3        | -7,3       | 5,2        | 0,3                  |
| Aug          | 5,5        | 6,1        | 2,0        | 0,4        | -1,7       | -0,4       | 0,2                  |
| Sep          | 2,3        | 8,0        | -2,4       | -2,2       | 7,3        | 1,3        | 0,4                  |
| Oct          | 1,8        | 2,4        | 3,4        | 1,9        | 1,9        | -2,3       | 0,0                  |
| Nov          | 4,0        | 3,9        | 3,8        | 0,0        | -2,0       | -1,2       | -0,1                 |
| Dec          | 2,0        | 2,7        | 1,8        | 3,0        | 1,4        | 0,4        | 0,0                  |
| <b>Total</b> | <b>4,6</b> | <b>2,8</b> | <b>2,2</b> | <b>1,3</b> | <b>0,1</b> | <b>0,0</b> |                      |

**Table 3 – Seasonally adjusted volume of manufacturing production**

| Month | Index (Base: 2010=100) |       |       |       | Month-on-month % change |      |      |      |
|-------|------------------------|-------|-------|-------|-------------------------|------|------|------|
|       | 2012                   | 2013  | 2014  | 2015  | 2012                    | 2013 | 2014 | 2015 |
| Jan   | 103,7                  | 105,8 | 107,9 | 106,1 | -0,3                    | -0,3 | 0,3  | -1,5 |
| Feb   | 104,9                  | 105,1 | 107,1 | 107,0 | 1,2                     | -0,7 | -0,7 | 0,8  |
| Mar   | 103,1                  | 105,3 | 104,9 | 108,5 | -1,7                    | 0,2  | -2,1 | 1,4  |
| Apr   | 104,4                  | 108,1 | 108,9 | 105,9 | 1,3                     | 2,7  | 3,8  | -2,4 |
| May   | 105,4                  | 107,4 | 105,7 | 104,8 | 1,0                     | -0,6 | -2,9 | -1,0 |
| Jun   | 105,1                  | 106,7 | 107,3 | 105,9 | -0,3                    | -0,7 | 1,5  | 1,0  |
| Jul   | 104,5                  | 109,2 | 100,7 | 105,9 | -0,6                    | 2,3  | -6,2 | 0,0  |
| Aug   | 105,2                  | 106,6 | 105,8 | 106,3 | 0,7                     | -2,4 | 5,1  | 0,4  |
| Sep   | 104,8                  | 101,5 | 108,0 | 108,7 | -0,4                    | -4,8 | 2,1  | 2,3  |
| Oct   | 105,0                  | 106,4 | 108,1 | 106,7 | 0,2                     | 4,8  | 0,1  | -1,8 |
| Nov   | 107,3                  | 108,4 | 107,3 | 105,3 | 2,2                     | 1,9  | -0,7 | -1,3 |
| Dec   | 106,1                  | 107,6 | 107,7 | 107,2 | -1,1                    | -0,7 | 0,4  | 1,8  |

**Table 4 – Index of the volume of manufacturing production by division and major group (Base: 2010=100)**

| Manufacturing division and major group  | Weight (2012) | Jul-15       | Aug-15       | Sep-15       | <sup>1</sup> Oct-15 | <sup>1</sup> Nov-15 | <sup>1</sup> Dec-15 |
|---|---------------|--------------|--------------|--------------|---------------------|---------------------|---------------------|
| <b>Food and beverages</b>   | <b>24,44</b>  | <b>112,9</b> | <b>114,4</b> | <b>123,4</b> | <b>126,3</b>        | <b>120,1</b>        | <b>131,7</b>        |
| Meat, fish, fruit, etc.   | 5,39          | 116,8        | 121,3        | 124,3        | 126,9               | 132,2               | 133,0               |
| Dairy products  | 1,78          | 116,0        | 108,1        | 122,7        | 134,6               | 123,5               | 137,3               |
| Grain mill products   | 2,86          | 108,4        | 108,8        | 106,8        | 105,1               | 109,5               | 109,7               |
| Other food products   | 7,73          | 119,8        | 118,1        | 119,9        | 124,9               | 100,6               | 105,9               |
| Beverages   | 6,68          | 102,7        | 108,5        | 134,1        | 134,2               | 136,7               | 168,5               |
| <b>Textiles, clothing, leather and footwear</b>                                       | <b>3,17</b>   | <b>99,8</b>  | <b>97,0</b>  | <b>102,8</b> | <b>112,6</b>        | <b>112,8</b>        | <b>72,9</b>         |
| Textiles  | 0,74          | 86,8         | 83,9         | 90,7         | 91,2                | 95,4                | 54,0                |
| Other textile products  | 0,47          | 97,8         | 88,7         | 91,0         | 110,9               | 103,7               | 65,3                |
| Knitted, crocheted articles   | 0,10          | 59,3         | 52,0         | 53,9         | 62,9                | 60,5                | 32,3                |
| Wearing apparel   | 1,19          | 104,2        | 104,4        | 108,6        | 121,2               | 125,4               | 83,4                |
| Leather and leather products  | 0,28          | 115,7        | 120,8        | 126,0        | 126,4               | 124,5               | 106,3               |
| Footwear  | 0,39          | 112,1        | 102,9        | 117,4        | 131,3               | 122,2               | 71,8                |
| <b>Wood and wood products, paper, publishing and printing</b>                         | <b>12,65</b>  | <b>108,7</b> | <b>106,8</b> | <b>115,4</b> | <b>113,6</b>        | <b>117,8</b>        | <b>95,6</b>         |
| Sawmilling and planing of wood  | 1,83          | 140,3        | 123,7        | 135,2        | 137,0               | 131,6               | 105,8               |
| Products of wood  | 2,55          | 113,6        | 105,1        | 112,0        | 116,9               | 116,5               | 80,2                |
| Paper and paper products  | 4,89          | 100,3        | 109,6        | 121,1        | 108,2               | 112,6               | 105,7               |
| Publishing  | 1,51          | 91,7         | 100,4        | 103,0        | 108,1               | 113,9               | 97,6                |
| Printing, recorded media  | 1,87          | 106,7        | 90,3         | 95,9         | 104,7               | 122,8               | 78,6                |
| <b>Petroleum, chemical products, rubber and plastic products</b>                      | <b>22,13</b>  | <b>106,1</b> | <b>109,3</b> | <b>113,6</b> | <b>123,3</b>        | <b>120,7</b>        | <b>106,5</b>        |
| Coke, petroleum products and nuclear fuel   | 7,77          | 92,1         | 94,1         | 100,6        | 114,6               | 109,9               | 109,6               |
| Basic chemicals   | 3,81          | 119,7        | 123,8        | 118,6        | 129,9               | 127,9               | 112,1               |
| Other chemical products   | 6,49          | 116,1        | 121,8        | 131,0        | 131,6               | 128,4               | 114,3               |
| Rubber products   | 1,00          | 111,4        | 106,5        | 104,4        | 120,5               | 113,5               | 69,8                |
| Plastic products  | 3,06          | 101,7        | 104,3        | 106,8        | 120,4               | 124,9               | 86,8                |
| <b>Glass and non-metallic mineral products</b>  | <b>3,91</b>   | <b>106,6</b> | <b>100,9</b> | <b>110,9</b> | <b>111,6</b>        | <b>111,2</b>        | <b>72,0</b>         |
| Glass and glass products  | 0,78          | 102,8        | 98,0         | 106,4        | 109,5               | 112,2               | 88,0                |
| Non-metallic mineral products   | 3,13          | 107,5        | 101,6        | 112,0        | 112,1               | 111,0               | 68,0                |
| <b>Basic iron and steel, non-ferrous metal products, metal products and machinery</b> | <b>19,59</b>  | <b>104,4</b> | <b>100,1</b> | <b>103,8</b> | <b>104,4</b>        | <b>104,6</b>        | <b>81,9</b>         |
| Basic iron and steel products   | 3,38          | 87,7         | 76,4         | 80,4         | 81,3                | 80,5                | 80,2                |
| Non-ferrous metal products  | 3,18          | 98,8         | 93,9         | 93,2         | 98,0                | 92,0                | 81,8                |
| Structural metal products   | 1,89          | 89,1         | 84,4         | 84,7         | 90,0                | 87,0                | 62,5                |
| Other fabricated metal products   | 4,40          | 125,4        | 120,5        | 131,0        | 131,4               | 132,8               | 83,7                |
| General purpose machinery   | 2,44          | 86,5         | 91,9         | 85,9         | 88,7                | 89,2                | 68,4                |
| Special purpose machinery   | 3,44          | 117,8        | 114,8        | 122,9        | 114,9               | 120,9               | 101,6               |
| Household appliances  | 0,86          | 113,6        | 110,0        | 113,6        | 114,6               | 118,5               | 82,4                |
| <b>Electrical machinery</b>   | <b>1,70</b>   | <b>124,7</b> | <b>116,8</b> | <b>123,4</b> | <b>116,2</b>        | <b>128,1</b>        | <b>91,5</b>         |
| <b>Radio, television and communication apparatus and professional equipment</b>       | <b>1,41</b>   | <b>132,1</b> | <b>150,1</b> | <b>154,8</b> | <b>162,4</b>        | <b>180,1</b>        | <b>145,4</b>        |
| Radio, television and communication apparatus   | 0,90          | 151,9        | 177,9        | 181,6        | 186,9               | 215,8               | 170,3               |
| Professional equipment  | 0,51          | 96,9         | 100,5        | 107,0        | 118,8               | 116,5               | 101,1               |
| <b>Motor vehicles, parts and accessories and other transport equipment</b>            | <b>7,39</b>   | <b>123,8</b> | <b>114,3</b> | <b>116,6</b> | <b>124,0</b>        | <b>126,2</b>        | <b>64,5</b>         |
| Motor vehicles  | 2,98          | 154,6        | 141,7        | 133,8        | 147,4               | 153,2               | 56,5                |
| Bodies for motor vehicles, trailers and semi-trailers                                 | 0,43          | 132,5        | 118,0        | 115,5        | 135,3               | 136,8               | 65,0                |
| Parts and accessories   | 2,77          | 103,2        | 91,1         | 97,6         | 102,6               | 105,9               | 51,9                |
| Other transport equipment   | 1,21          | 92,1         | 98,3         | 118,1        | 111,2               | 102,4               | 112,5               |
| <b>Furniture and other manufacturing</b>  | <b>3,61</b>   | <b>88,9</b>  | <b>91,6</b>  | <b>104,0</b> | <b>109,4</b>        | <b>104,3</b>        | <b>70,4</b>         |
| Furniture   | 1,08          | 114,7        | 106,5        | 118,0        | 137,9               | 140,2               | 90,0                |
| Other manufacturing groups  | 2,53          | 77,7         | 85,2         | 97,9         | 97,2                | 88,9                | 62,0                |
| <b>Total</b>  | <b>100</b>    | <b>108,9</b> | <b>108,1</b> | <b>114,5</b> | <b>118,3</b>        | <b>117,2</b>        | <b>99,9</b>         |

<sup>1</sup> The latest three months are preliminary.



**Table 5 – Year-on-year percentage change in the volume of manufacturing production by division and major group (Base: 2010=100)**

| Manufacturing division and major group  | Jul-15       | Aug-15      | Sep-15      | Oct-15       | Nov-15       | Dec-15      |
|---|--------------|-------------|-------------|--------------|--------------|-------------|
| <b>Food and beverages</b>   | <b>-0,1</b>  | <b>3,8</b>  | <b>3,4</b>  | <b>3,7</b>   | <b>1,7</b>   | <b>4,4</b>  |
| Meat, fish, fruit, etc.   | -1,3         | 6,2         | 1,6         | 5,5          | 9,2          | 2,9         |
| Dairy products  | 14,5         | 4,8         | 6,9         | 8,5          | 5,6          | 9,5         |
| Grain mill products   | 1,1          | 2,5         | -0,7        | -3,6         | 1,7          | 6,1         |
| Other food products   | -3,4         | 4,3         | -1,3        | 6,4          | -10,3        | 0,9         |
| Beverages   | 1,2          | 1,1         | 10,9        | 1,0          | 7,3          | 6,6         |
| <b>Textiles, clothing, leather and footwear</b>                                       | <b>-0,5</b>  | <b>-0,7</b> | <b>-1,6</b> | <b>-4,8</b>  | <b>-4,0</b>  | <b>-4,3</b> |
| Textiles  | 7,8          | 13,2        | -1,0        | -5,5         | -1,3         | -3,6        |
| Other textile products  | 2,0          | -11,0       | -7,7        | -3,6         | -8,0         | -13,0       |
| Knitted, crocheted articles   | 12,5         | 8,8         | -2,0        | 2,1          | -9,8         | -11,5       |
| Wearing apparel   | -2,3         | -1,4        | 1,7         | -3,9         | -2,6         | -2,6        |
| Leather and leather products  | -0,2         | 13,9        | 3,4         | -2,8         | -8,5         | -8,6        |
| Footwear  | -9,2         | -15,0       | -8,8        | -9,4         | -3,9         | 4,2         |
| <b>Wood and wood products, paper, publishing and printing</b>                         | <b>3,8</b>   | <b>4,5</b>  | <b>1,8</b>  | <b>-4,1</b>  | <b>-2,2</b>  | <b>-1,8</b> |
| Sawmilling and planing of wood  | 13,6         | 10,3        | 17,5        | 2,8          | 4,9          | 14,4        |
| Products of wood  | 15,4         | 0,2         | -4,6        | -3,8         | -1,9         | 9,6         |
| Paper and paper products  | 1,1          | 12,6        | 9,6         | -1,4         | -2,4         | -4,4        |
| Publishing  | -8,4         | -3,4        | -11,3       | -13,5        | -8,9         | -12,2       |
| Printing, recorded media  | -5,7         | -10,0       | -14,4       | -10,4        | -3,2         | -12,0       |
| <b>Petroleum, chemical products, rubber and plastic products</b>                      | <b>-2,8</b>  | <b>3,3</b>  | <b>6,2</b>  | <b>1,7</b>   | <b>-0,9</b>  | <b>2,1</b>  |
| Coke, petroleum products and nuclear fuel   | -16,5        | 8,7         | 15,6        | 9,8          | 1,1          | -2,8        |
| Basic chemicals   | 0,4          | 4,7         | 1,9         | -1,7         | -6,8         | -0,2        |
| Other chemical products   | 6,9          | 1,6         | 6,5         | -2,9         | -0,2         | 9,4         |
| Rubber products   | 13,2         | 8,1         | -2,1        | 0,1          | -4,6         | 3,9         |
| Plastic products  | 3,2          | -6,8        | -5,0        | 0,2          | 2,3          | 3,2         |
| <b>Glass and non-metallic mineral products</b>  | <b>-3,4</b>  | <b>-1,7</b> | <b>6,2</b>  | <b>-4,6</b>  | <b>2,3</b>   | <b>-1,2</b> |
| Glass and glass products  | 12,7         | 0,7         | 14,0        | 0,7          | 7,4          | 0,9         |
| Non-metallic mineral products   | -6,7         | -2,2        | 4,6         | -5,9         | 1,1          | -1,9        |
| <b>Basic iron and steel, non-ferrous metal products, metal products and machinery</b> | <b>18,0</b>  | <b>-8,9</b> | <b>-4,5</b> | <b>-9,8</b>  | <b>-6,9</b>  | <b>-6,2</b> |
| Basic iron and steel products   | 12,1         | -22,8       | -15,2       | -18,8        | -17,9        | -7,2        |
| Non-ferrous metal products  | 9,1          | -13,6       | -8,1        | -11,2        | -8,6         | -9,1        |
| Structural metal products   | 32,4         | 1,0         | 5,2         | -7,4         | -6,5         | 0,5         |
| Other fabricated metal products   | 32,6         | -7,5        | -5,9        | -6,2         | -2,7         | -7,8        |
| General purpose machinery   | 10,5         | -3,6        | -6,3        | -14,4        | -6,8         | -12,4       |
| Special purpose machinery   | 8,2          | -4,1        | 3,4         | -4,8         | -2,3         | -1,2        |
| Household appliances  | 36,2         | -2,8        | 10,2        | -11,1        | -11,4        | 0,5         |
| <b>Electrical machinery</b>   | <b>52,4</b>  | <b>7,1</b>  | <b>9,3</b>  | <b>2,1</b>   | <b>12,1</b>  | <b>11,9</b> |
| <b>Radio, television and communication apparatus and professional equipment</b>       | <b>7,9</b>   | <b>-6,4</b> | <b>2,4</b>  | <b>-5,4</b>  | <b>2,5</b>   | <b>15,2</b> |
| Radio, television and communication apparatus   | 8,3          | -10,2       | 4,7         | -9,1         | 2,0          | 18,0        |
| Professional equipment  | 7,1          | 7,7         | -3,9        | 6,6          | 4,2          | 7,8         |
| <b>Motor vehicles, parts and accessories and other transport equipment</b>            | <b>36,5</b>  | <b>-4,2</b> | <b>-7,5</b> | <b>-6,5</b>  | <b>3,9</b>   | <b>-6,1</b> |
| Motor vehicles  | 56,6         | -6,5        | -16,7       | -12,6        | -0,2         | -18,4       |
| Bodies for motor vehicles, trailers and semi-trailers                                 | 39,5         | 6,3         | -5,0        | -4,1         | 10,3         | -0,2        |
| Parts and accessories   | 23,7         | -4,0        | -0,9        | -0,1         | 7,7          | -1,7        |
| Other transport equipment   | 6,7          | -0,1        | 12,2        | 1,9          | 7,6          | 7,1         |
| <b>Furniture and other manufacturing</b>  | <b>-16,6</b> | <b>-9,7</b> | <b>0,4</b>  | <b>-10,3</b> | <b>-10,2</b> | <b>-3,8</b> |
| Furniture   | -4,8         | -8,3        | -4,2        | -3,8         | 0,8          | -3,9        |
| Other manufacturing groups  | -22,8        | -10,3       | 2,8         | -13,8        | -16,4        | -3,7        |
| <b>Total</b>  | <b>5,2</b>   | <b>-0,4</b> | <b>1,3</b>  | <b>-2,3</b>  | <b>-1,2</b>  | <b>0,4</b>  |

**Table 6 – Contribution of each division and major group to the year-on-year percentage change in the volume of manufacturing production (percentage points)**

| Manufacturing division and major group  | Weight (2012) | Jul-15      | Aug-15      | Sep-15      | Oct-15      | Nov-15      | Dec-15      |
|---|---------------|-------------|-------------|-------------|-------------|-------------|-------------|
| <b>Food and beverages</b>   | <b>24,44</b>  | <b>0,0</b>  | <b>0,9</b>  | <b>0,9</b>  | <b>0,9</b>  | <b>0,4</b>  | <b>1,4</b>  |
| Meat, fish, fruit, etc.   | 5,39          | -0,1        | 0,4         | 0,1         | 0,3         | 0,5         | 0,2         |
| Dairy products  | 1,78          | 0,3         | 0,1         | 0,1         | 0,2         | 0,1         | 0,2         |
| Grain mill products   | 2,86          | 0,0         | 0,1         | 0,0         | -0,1        | 0,0         | 0,2         |
| Other food products   | 7,73          | -0,3        | 0,3         | -0,1        | 0,5         | -0,8        | 0,1         |
| Beverages   | 6,68          | 0,1         | 0,1         | 0,8         | 0,1         | 0,5         | 0,7         |
| <b>Textiles, clothing, leather and footwear</b>                                       | <b>3,17</b>   | <b>0,0</b>  | <b>0,0</b>  | <b>0,0</b>  | <b>-0,1</b> | <b>-0,1</b> | <b>-0,1</b> |
| Textiles  | 0,74          | 0,0         | 0,1         | 0,0         | 0,0         | 0,0         | 0,0         |
| Other textile products  | 0,47          | 0,0         | 0,0         | 0,0         | 0,0         | 0,0         | 0,0         |
| Knitted, crocheted articles   | 0,10          | 0,0         | 0,0         | 0,0         | 0,0         | 0,0         | 0,0         |
| Wearing apparel   | 1,19          | 0,0         | 0,0         | 0,0         | 0,0         | 0,0         | 0,0         |
| Leather and leather products  | 0,28          | 0,0         | 0,0         | 0,0         | 0,0         | 0,0         | 0,0         |
| Footwear  | 0,39          | 0,0         | -0,1        | 0,0         | 0,0         | 0,0         | 0,0         |
| <b>Wood and wood products, paper, publishing and printing</b>                         | <b>12,65</b>  | <b>0,5</b>  | <b>0,5</b>  | <b>0,2</b>  | <b>-0,5</b> | <b>-0,3</b> | <b>-0,2</b> |
| Sawmilling and planing of wood  | 1,83          | 0,3         | 0,2         | 0,3         | 0,1         | 0,1         | 0,2         |
| Products of wood  | 2,55          | 0,4         | 0,0         | -0,1        | -0,1        | 0,0         | 0,2         |
| Paper and paper products  | 4,89          | 0,1         | 0,6         | 0,5         | -0,1        | -0,1        | -0,2        |
| Publishing  | 1,51          | -0,1        | 0,0         | -0,2        | -0,2        | -0,1        | -0,2        |
| Printing, recorded media  | 1,87          | -0,1        | -0,2        | -0,3        | -0,2        | -0,1        | -0,2        |
| <b>Petroleum, chemical products, rubber and plastic products</b>                      | <b>22,13</b>  | <b>-0,7</b> | <b>0,7</b>  | <b>1,3</b>  | <b>0,4</b>  | <b>-0,2</b> | <b>0,5</b>  |
| Coke, petroleum products and nuclear fuel   | 7,77          | -1,4        | 0,5         | 0,9         | 0,7         | 0,1         | -0,2        |
| Basic chemicals   | 3,81          | 0,0         | 0,2         | 0,1         | -0,1        | -0,3        | 0,0         |
| Other chemical products   | 6,49          | 0,5         | 0,1         | 0,5         | -0,2        | 0,0         | 0,6         |
| Rubber products   | 1,00          | 0,1         | 0,1         | 0,0         | 0,0         | 0,0         | 0,0         |
| Plastic products  | 3,06          | 0,1         | -0,2        | -0,2        | 0,0         | 0,1         | 0,1         |
| <b>Glass and non-metallic mineral products</b>  | <b>3,91</b>   | <b>-0,1</b> | <b>-0,1</b> | <b>0,2</b>  | <b>-0,2</b> | <b>0,1</b>  | <b>0,0</b>  |
| Glass and glass products  | 0,78          | 0,1         | 0,0         | 0,1         | 0,0         | 0,1         | 0,0         |
| Non-metallic mineral products   | 3,13          | -0,2        | -0,1        | 0,1         | -0,2        | 0,0         | 0,0         |
| <b>Basic iron and steel, non-ferrous metal products, metal products and machinery</b> | <b>19,59</b>  | <b>3,0</b>  | <b>-1,8</b> | <b>-0,8</b> | <b>-1,8</b> | <b>-1,3</b> | <b>-1,1</b> |
| Basic iron and steel products   | 3,38          | 0,3         | -0,7        | -0,4        | -0,5        | -0,5        | -0,2        |
| Non-ferrous metal products  | 3,18          | 0,3         | -0,4        | -0,2        | -0,3        | -0,2        | -0,3        |
| Structural metal products   | 1,89          | 0,4         | 0,0         | 0,1         | -0,1        | -0,1        | 0,0         |
| Other fabricated metal products   | 4,40          | 1,3         | -0,4        | -0,3        | -0,3        | -0,1        | -0,3        |
| General purpose machinery   | 2,44          | 0,2         | -0,1        | -0,1        | -0,3        | -0,1        | -0,2        |
| Special purpose machinery   | 3,44          | 0,3         | -0,2        | 0,1         | -0,2        | -0,1        | 0,0         |
| Household appliances  | 0,86          | 0,3         | 0,0         | 0,1         | -0,1        | -0,1        | 0,0         |
| <b>Electrical machinery</b>   | <b>1,70</b>   | <b>0,7</b>  | <b>0,1</b>  | <b>0,2</b>  | <b>0,0</b>  | <b>0,2</b>  | <b>0,2</b>  |
| <b>Radio, television and communication apparatus and professional equipment</b>       | <b>1,41</b>   | <b>0,1</b>  | <b>-0,1</b> | <b>0,0</b>  | <b>-0,1</b> | <b>0,1</b>  | <b>0,3</b>  |
| Radio, television and communication apparatus   | 0,90          | 0,1         | -0,2        | 0,1         | -0,1        | 0,0         | 0,2         |
| Professional equipment  | 0,51          | 0,0         | 0,0         | 0,0         | 0,0         | 0,0         | 0,0         |
| <b>Motor vehicles, parts and accessories and other transport equipment</b>            | <b>7,39</b>   | <b>2,4</b>  | <b>-0,3</b> | <b>-0,6</b> | <b>-0,5</b> | <b>0,3</b>  | <b>-0,3</b> |
| Motor vehicles  | 2,98          | 1,6         | -0,3        | -0,7        | -0,5        | 0,0         | -0,4        |
| Bodies for motor vehicles, trailers and semi-trailers                                 | 0,43          | 0,2         | 0,0         | 0,0         | 0,0         | 0,0         | 0,0         |
| Parts and accessories   | 2,77          | 0,5         | -0,1        | 0,0         | 0,0         | 0,2         | 0,0         |
| Other transport equipment   | 1,21          | 0,1         | 0,0         | 0,1         | 0,0         | 0,1         | 0,1         |
| <b>Furniture and other manufacturing</b>  | <b>3,61</b>   | <b>-0,6</b> | <b>-0,3</b> | <b>0,0</b>  | <b>-0,4</b> | <b>-0,4</b> | <b>-0,1</b> |
| Furniture   | 1,08          | -0,1        | -0,1        | 0,0         | 0,0         | 0,0         | 0,0         |
| Other manufacturing groups  | 2,53          | -0,6        | -0,2        | 0,1         | -0,3        | -0,4        | -0,1        |
| <b>Total</b>  | <b>100</b>    | <b>5,2</b>  | <b>-0,4</b> | <b>1,3</b>  | <b>-2,3</b> | <b>-1,2</b> | <b>0,4</b>  |

**Table 7 – Seasonally adjusted index of the volume of manufacturing production by division and major group (Base: 2010=100)**

| Manufacturing division and major group  | Weight (2012) | Aug-15       | Sep-15       | Oct-15       | Nov-15       | Dec-15       | Month-on-month % change |
|---|---------------|--------------|--------------|--------------|--------------|--------------|-------------------------|
| <b>Food and beverages</b>   | <b>24,44</b>  | <b>114,3</b> | <b>114,3</b> | <b>116,6</b> | <b>111,0</b> | <b>117,9</b> | <b>6,2</b>              |
| Meat, fish, fruit, etc.   | 5,39          | 122,1        | 119,4        | 123,5        | 123,0        | 122,8        | -0,2                    |
| Dairy products  | 1,78          | 114,5        | 117,8        | 120,6        | 117,9        | 123,2        | 4,5                     |
| Grain mill products   | 2,86          | 106,3        | 103,2        | 102,9        | 102,9        | 108,6        | 5,5                     |
| Other food products   | 7,73          | 109,0        | 105,3        | 112,3        | 96,5         | 114,2        | 18,3                    |
| Beverages   | 6,68          | 117,6        | 124,6        | 121,0        | 119,8        | 120,7        | 0,8                     |
| <b>Textiles, clothing, leather and footwear</b>                                       | <b>3,17</b>   | <b>96,3</b>  | <b>96,6</b>  | <b>96,0</b>  | <b>94,6</b>  | <b>93,9</b>  | <b>-0,7</b>             |
| Textiles  | 0,74          | 86,4         | 85,8         | 81,9         | 85,0         | 79,9         | -6,0                    |
| Other textile products  | 0,47          | 89,2         | 88,3         | 95,1         | 86,7         | 86,7         | 0,0                     |
| Knitted, crocheted articles   | 0,10          | 56,9         | 53,7         | 54,5         | 50,7         | 48,2         | -4,9                    |
| Wearing apparel   | 1,19          | 100,3        | 102,5        | 101,4        | 100,3        | 100,3        | 0,0                     |
| Leather and leather products  | 0,28          | 128,2        | 126,4        | 117,1        | 111,9        | 120,1        | 7,3                     |
| Footwear  | 0,39          | 98,2         | 98,1         | 102,2        | 103,0        | 101,9        | -1,1                    |
| <b>Wood and wood products, paper, publishing and printing</b>                         | <b>12,65</b>  | <b>104,4</b> | <b>105,9</b> | <b>102,7</b> | <b>103,3</b> | <b>104,3</b> | <b>1,0</b>              |
| Sawmilling and planing of wood  | 1,83          | 125,6        | 130,6        | 125,2        | 123,6        | 128,3        | 3,8                     |
| Products of wood  | 2,55          | 100,8        | 104,2        | 100,6        | 101,0        | 102,1        | 1,1                     |
| Paper and paper products  | 4,89          | 107,6        | 108,3        | 103,6        | 102,6        | 104,4        | 1,8                     |
| Publishing  | 1,51          | 94,4         | 93,0         | 93,2         | 95,4         | 99,2         | 4,0                     |
| Printing, recorded media  | 1,87          | 88,3         | 88,0         | 88,6         | 94,6         | 87,4         | -7,6                    |
| <b>Petroleum, chemical products, rubber and plastic products</b>                      | <b>22,13</b>  | <b>109,0</b> | <b>112,8</b> | <b>111,7</b> | <b>109,8</b> | <b>110,6</b> | <b>0,7</b>              |
| Coke, petroleum products and nuclear fuel   | 7,77          | 95,6         | 107,5        | 110,0        | 106,3        | 101,7        | -4,3                    |
| Basic chemicals   | 3,81          | 121,7        | 118,6        | 115,4        | 112,6        | 111,7        | -0,8                    |
| Other chemical products   | 6,49          | 120,7        | 122,5        | 115,6        | 115,7        | 124,1        | 7,3                     |
| Rubber products   | 1,00          | 113,7        | 103,6        | 110,1        | 105,6        | 106,5        | 0,9                     |
| Plastic products  | 3,06          | 100,8        | 101,6        | 104,0        | 104,3        | 104,3        | 0,0                     |
| <b>Glass and non-metallic mineral products</b>  | <b>3,91</b>   | <b>97,2</b>  | <b>103,1</b> | <b>97,8</b>  | <b>97,7</b>  | <b>90,1</b>  | <b>-7,8</b>             |
| Glass and glass products  | 0,78          | 91,2         | 98,8         | 91,7         | 94,7         | 92,4         | -2,4                    |
| Non-metallic mineral products   | 3,13          | 98,7         | 104,2        | 99,3         | 98,4         | 89,5         | -9,0                    |
| <b>Basic iron and steel, non-ferrous metal products, metal products and machinery</b> | <b>19,59</b>  | <b>96,9</b>  | <b>99,8</b>  | <b>95,2</b>  | <b>95,9</b>  | <b>98,1</b>  | <b>2,3</b>              |
| Basic iron and steel products   | 3,38          | 77,6         | 81,0         | 79,0         | 81,8         | 91,7         | 12,1                    |
| Non-ferrous metal products  | 3,18          | 89,7         | 93,7         | 90,6         | 91,9         | 91,4         | -0,5                    |
| Structural metal products   | 1,89          | 82,5         | 82,9         | 77,3         | 76,3         | 79,6         | 4,3                     |
| Other fabricated metal products   | 4,40          | 114,2        | 120,7        | 116,1        | 115,7        | 114,2        | -1,3                    |
| General purpose machinery   | 2,44          | 87,2         | 82,4         | 79,3         | 79,1         | 77,0         | -2,7                    |
| Special purpose machinery   | 3,44          | 112,3        | 116,6        | 108,3        | 108,4        | 112,0        | 3,3                     |
| Household appliances  | 0,86          | 108,6        | 109,8        | 102,2        | 106,4        | 111,3        | 4,6                     |
| <b>Electrical machinery</b>   | <b>1,70</b>   | <b>112,2</b> | <b>115,0</b> | <b>109,1</b> | <b>115,4</b> | <b>117,2</b> | <b>1,6</b>              |
| <b>Radio, television and communication apparatus and professional equipment</b>       | <b>1,41</b>   | <b>138,5</b> | <b>144,9</b> | <b>141,7</b> | <b>149,1</b> | <b>159,4</b> | <b>6,9</b>              |
| Radio, television and communication apparatus   | 0,90          | 157,0        | 171,2        | 160,0        | 172,7        | 188,7        | 9,3                     |
| Professional equipment  | 0,51          | 105,5        | 98,0         | 109,0        | 107,0        | 107,2        | 0,2                     |
| <b>Motor vehicles, parts and accessories and other transport equipment</b>            | <b>7,39</b>   | <b>109,0</b> | <b>109,5</b> | <b>106,5</b> | <b>109,0</b> | <b>101,4</b> | <b>-7,0</b>             |
| Motor vehicles  | 2,98          | 131,5        | 125,3        | 119,1        | 126,7        | 110,3        | -12,9                   |
| Bodies for motor vehicles, trailers and semi-trailers                                 | 0,43          | 115,4        | 112,8        | 112,5        | 112,8        | 104,2        | -7,6                    |
| Parts and accessories   | 2,77          | 88,9         | 90,6         | 93,9         | 93,3         | 88,6         | -5,0                    |
| Other transport equipment   | 1,21          | 97,0         | 112,8        | 101,9        | 99,7         | 107,5        | 7,8                     |
| <b>Furniture and other manufacturing</b>  | <b>3,61</b>   | <b>90,0</b>  | <b>101,6</b> | <b>89,5</b>  | <b>85,9</b>  | <b>91,0</b>  | <b>5,9</b>              |
| Furniture   | 1,08          | 103,9        | 109,4        | 107,0        | 107,4        | 108,0        | 0,6                     |
| Other manufacturing groups  | 2,53          | 84,0         | 98,2         | 82,0         | 76,7         | 83,7         | 9,1                     |
| <b>Total</b>  | <b>100</b>    | <b>106,3</b> | <b>108,7</b> | <b>106,7</b> | <b>105,3</b> | <b>107,2</b> | <b>1,8</b>              |

**Table 8 – Manufacturing sales at current prices (R million)**

| Month        | 2009             | 2010             | 2011             | 2012             | 2013             | 2014             | 2015 <sup>1</sup> |
|--------------|------------------|------------------|------------------|------------------|------------------|------------------|-------------------|
| Jan          | 89 616           | 90 215           | 95 994           | 107 218          | 116 532          | 130 303          | 129 333           |
| Feb          | 101 570          | 101 983          | 111 651          | 125 750          | 131 788          | 146 300          | 143 332           |
| Mar          | 110 013          | 115 516          | 126 331          | 133 374          | 137 740          | 151 487          | 161 661           |
| Apr          | 94 153           | 101 853          | 108 005          | 117 453          | 133 321          | 143 553          | 142 263           |
| May          | 100 754          | 109 489          | 117 657          | 130 302          | 141 196          | 148 043          | 153 030           |
| Jun          | 102 477          | 113 772          | 122 233          | 130 849          | 139 275          | 155 933          | 157 801           |
| Jul          | 104 040          | 113 046          | 113 051          | 127 702          | 146 362          | 145 849          | 158 167           |
| Aug          | 105 013          | 110 779          | 125 128          | 134 503          | 143 958          | 156 037          | 156 112           |
| Sep          | 109 202          | 113 369          | 133 135          | 131 890          | 140 221          | 162 333          | 166 634           |
| Oct          | 114 706          | 121 878          | 133 901          | 144 549          | 156 327          | 175 379          | 172 704           |
| Nov          | 116 959          | 126 703          | 139 235          | 153 267          | 162 140          | 170 409          | 173 248           |
| Dec          | 99 452           | 104 635          | 117 662          | 123 569          | 140 451          | 148 058          | 150 758           |
| <b>Total</b> | <b>1 247 955</b> | <b>1 323 238</b> | <b>1 443 983</b> | <b>1 560 426</b> | <b>1 689 311</b> | <b>1 833 684</b> | <b>1 865 043</b>  |

<sup>1</sup> The latest three months are preliminary.

**Table 9 – Year-on-year percentage change in manufacturing sales at current prices**

| Month        | 2010       | 2011       | 2012       | 2013       | 2014       | 2015       | 2015<br>year-to-date |
|--------------|------------|------------|------------|------------|------------|------------|----------------------|
| Jan          | 0,7        | 6,4        | 11,7       | 8,7        | 11,8       | -0,7       | -0,7                 |
| Feb          | 0,4        | 9,5        | 12,6       | 4,8        | 11,0       | -2,0       | -1,4                 |
| Mar          | 5,0        | 9,4        | 5,6        | 3,3        | 10,0       | 6,7        | 1,5                  |
| Apr          | 8,2        | 6,0        | 8,7        | 13,5       | 7,7        | -0,9       | 0,9                  |
| May          | 8,7        | 7,5        | 10,7       | 8,4        | 4,8        | 3,4        | 1,4                  |
| Jun          | 11,0       | 7,4        | 7,0        | 6,4        | 12,0       | 1,2        | 1,3                  |
| Jul          | 8,7        | 0,0        | 13,0       | 14,6       | -0,4       | 8,4        | 2,4                  |
| Aug          | 5,5        | 13,0       | 7,5        | 7,0        | 8,4        | 0,0        | 2,1                  |
| Sep          | 3,8        | 17,4       | -0,9       | 6,3        | 15,8       | 2,6        | 2,1                  |
| Oct          | 6,3        | 9,9        | 8,0        | 8,1        | 12,2       | -1,5       | 1,7                  |
| Nov          | 8,3        | 9,9        | 10,1       | 5,8        | 5,1        | 1,7        | 1,7                  |
| Dec          | 5,2        | 12,4       | 5,0        | 13,7       | 5,4        | 1,8        | 1,7                  |
| <b>Total</b> | <b>6,0</b> | <b>9,1</b> | <b>8,1</b> | <b>8,3</b> | <b>8,5</b> | <b>1,7</b> |                      |

**Table 10 – Seasonally adjusted manufacturing sales at current prices**

| Month | R million |         |         |         | Month-on-month % change |      |      |      |
|-------|-----------|---------|---------|---------|-------------------------|------|------|------|
|       | 2012      | 2013    | 2014    | 2015    | 2012                    | 2013 | 2014 | 2015 |
| Jan   | 126 593   | 135 306 | 150 506 | 151 246 | -0,4                    | 1,2  | 0,8  | -3,0 |
| Feb   | 128 214   | 137 277 | 152 428 | 149 657 | 1,3                     | 1,5  | 1,3  | -1,1 |
| Mar   | 127 304   | 137 125 | 147 136 | 156 087 | -0,7                    | -0,1 | -3,5 | 4,3  |
| Apr   | 127 384   | 138 487 | 153 386 | 151 765 | 0,1                     | 1,0  | 4,2  | -2,8 |
| May   | 129 536   | 140 346 | 148 738 | 155 307 | 1,7                     | 1,3  | -3,0 | 2,3  |
| Jun   | 129 100   | 139 126 | 154 726 | 155 232 | -0,3                    | -0,9 | 4,0  | 0,0  |
| Jul   | 127 656   | 145 255 | 144 453 | 156 292 | -1,1                    | 4,4  | -6,6 | 0,7  |
| Aug   | 130 725   | 141 489 | 154 715 | 155 803 | 2,4                     | -2,6 | 7,1  | -0,3 |
| Sep   | 128 803   | 135 860 | 155 757 | 159 247 | -1,5                    | -4,0 | 0,7  | 2,2  |
| Oct   | 132 175   | 142 789 | 160 253 | 159 168 | 2,6                     | 5,1  | 2,9  | 0,0  |
| Nov   | 136 113   | 145 721 | 155 117 | 156 532 | 3,0                     | 2,1  | -3,2 | -1,7 |
| Dec   | 133 676   | 149 296 | 155 930 | 156 705 | -1,8                    | 2,5  | 0,5  | 0,1  |

**Table 11 – Manufacturing sales at current prices by division and major group (R million)**

| Manufacturing division and major group  | Jul-15         | Aug-15         | Sep-15         | <sup>1</sup> Oct-15 | <sup>1</sup> Nov-15 | <sup>1</sup> Dec-15 |
|---|----------------|----------------|----------------|---------------------|---------------------|---------------------|
| <b>Food and beverages</b>   | <b>34 547</b>  | <b>35 218</b>  | <b>37 693</b>  | <b>38 312</b>       | <b>39 728</b>       | <b>44 870</b>       |
| Meat, fish, fruit, etc.   | 9 641          | 9 794          | 10 267         | 10 369              | 10 947              | 11 704              |
| Dairy products  | 3 297          | 3 160          | 3 312          | 3 654               | 3 474               | 3 768               |
| Grain mill products   | 5 921          | 5 781          | 5 802          | 5 830               | 6 114               | 6 195               |
| Other food products   | 6 959          | 6 916          | 7 280          | 7 489               | 7 617               | 7 452               |
| Beverages   | 8 729          | 9 567          | 11 032         | 10 970              | 11 576              | 15 751              |
| <b>Textiles, clothing, leather and footwear</b>                                       | <b>4 354</b>   | <b>4 294</b>   | <b>4 475</b>   | <b>5 062</b>        | <b>5 070</b>        | <b>3 509</b>        |
| Textiles  | 583            | 579            | 648            | 657                 | 692                 | 419                 |
| Other textile products  | 1 278          | 1 168          | 1 168          | 1 469               | 1 345               | 868                 |
| Knitted, crocheted articles   | 216            | 198            | 199            | 229                 | 231                 | 139                 |
| Wearing apparel   | 1 271          | 1 287          | 1 358          | 1 531               | 1 603               | 1 162               |
| Leather and leather products  | 575            | 627            | 645            | 625                 | 625                 | 509                 |
| Footwear  | 432            | 436            | 458            | 552                 | 574                 | 412                 |
| <b>Wood and wood products, paper, publishing and printing</b>                         | <b>12 136</b>  | <b>12 361</b>  | <b>13 631</b>  | <b>13 231</b>       | <b>13 969</b>       | <b>11 678</b>       |
| Sawmilling and planing of wood  | 995            | 838            | 1 081          | 1 041               | 913                 | 878                 |
| Products of wood  | 1 685          | 1 674          | 1 818          | 1 836               | 1 915               | 1 312               |
| Paper and paper products  | 5 266          | 5 913          | 6 587          | 5 761               | 6 108               | 5 758               |
| Publishing  | 1 580          | 1 718          | 1 773          | 1 929               | 2 048               | 1 716               |
| Printing, recorded media  | 2 611          | 2 219          | 2 371          | 2 664               | 2 985               | 2 014               |
| <b>Petroleum, chemical products, rubber and plastic products</b>                      | <b>35 945</b>  | <b>35 315</b>  | <b>37 974</b>  | <b>40 201</b>       | <b>38 530</b>       | <b>34 157</b>       |
| Coke, petroleum products and nuclear fuel   | 13 242         | 11 804         | 12 646         | 13 811              | 12 300              | 12 564              |
| Basic chemicals   | 7 262          | 7 420          | 8 122          | 8 485               | 7 849               | 6 574               |
| Other chemical products   | 8 767          | 9 361          | 10 164         | 10 006              | 10 309              | 9 289               |
| Rubber products   | 1 433          | 1 391          | 1 391          | 1 562               | 1 539               | 1 023               |
| Plastic products  | 5 241          | 5 339          | 5 650          | 6 336               | 6 532               | 4 708               |
| Glass and non-metallic mineral products   | 4 950          | 4 837          | 5 123          | 5 303               | 5 382               | 3 414               |
| Glass and glass products  | 780            | 809            | 887            | 972                 | 1 037               | 724                 |
| Non-metallic mineral products   | 4 170          | 4 028          | 4 236          | 4 331               | 4 345               | 2 690               |
| <b>Basic iron and steel, non-ferrous metal products, metal products and machinery</b> | <b>33 144</b>  | <b>31 819</b>  | <b>33 755</b>  | <b>34 462</b>       | <b>34 079</b>       | <b>26 805</b>       |
| Basic iron and steel products   | 8 992          | 8 727          | 9 372          | 9 226               | 8 669               | 6 326               |
| Non-ferrous metal products  | 7 268          | 6 798          | 6 925          | 7 932               | 7 620               | 7 317               |
| Structural metal products   | 3 015          | 2 942          | 3 029          | 3 060               | 3 021               | 2 255               |
| Other fabricated metal products   | 5 595          | 5 407          | 5 837          | 5 903               | 5 882               | 3 728               |
| General purpose machinery   | 2 849          | 2 880          | 2 896          | 2 935               | 3 022               | 2 407               |
| Special purpose machinery   | 4 549          | 4 211          | 4 792          | 4 393               | 4 830               | 4 061               |
| Household appliances  | 876            | 853            | 904            | 1 012               | 1 033               | 711                 |
| <b>Electrical machinery</b>   | <b>5 365</b>   | <b>5 117</b>   | <b>5 558</b>   | <b>4 938</b>        | <b>5 759</b>        | <b>4 040</b>        |
| <b>Radio, television and communication apparatus and professional equipment</b>       | <b>1 663</b>   | <b>1 823</b>   | <b>1 923</b>   | <b>1 970</b>        | <b>2 338</b>        | <b>1 871</b>        |
| Radio, television and communication apparatus   | 1 017          | 1 159          | 1 191          | 1 189               | 1 564               | 1 202               |
| Professional equipment  | 646            | 664            | 733            | 781                 | 774                 | 669                 |
| <b>Motor vehicles, parts and accessories and other transport equipment</b>            | <b>21 135</b>  | <b>20 403</b>  | <b>21 329</b>  | <b>23 413</b>       | <b>22 917</b>       | <b>15 305</b>       |
| Motor vehicles  | 11 211         | 10 829         | 11 148         | 12 859              | 12 414              | 8 527               |
| Bodies for motor vehicles, trailers and semi-trailers                                 | 874            | 832            | 854            | 898                 | 978                 | 500                 |
| Parts and accessories   | 6 695          | 6 228          | 6 214          | 6 864               | 6 872               | 3 357               |
| Other transport equipment   | 2 355          | 2 514          | 3 113          | 2 792               | 2 653               | 2 921               |
| <b>Furniture and other manufacturing</b>  | <b>4 928</b>   | <b>4 925</b>   | <b>5 172</b>   | <b>5 812</b>        | <b>5 477</b>        | <b>5 108</b>        |
| Furniture   | 1 244          | 1 136          | 1 277          | 1 531               | 1 531               | 1 031               |
| Other manufacturing groups  | 3 683          | 3 789          | 3 895          | 4 281               | 3 946               | 4 076               |
| <b>Total</b>  | <b>158 167</b> | <b>156 112</b> | <b>166 634</b> | <b>172 704</b>      | <b>173 248</b>      | <b>150 758</b>      |

<sup>1</sup> The latest three months are preliminary.

**Table 12 – Year-on-year percentage change in manufacturing sales at current prices by division and major group**

| Manufacturing division and major group  | Jul-15      | Aug-15      | Sep-15      | Oct-15      | Nov-15       | Dec-15      |
|---|-------------|-------------|-------------|-------------|--------------|-------------|
| <b>Food and beverages</b>   | <b>9,1</b>  | <b>10,1</b> | <b>8,9</b>  | <b>6,8</b>  | <b>12,6</b>  | <b>12,0</b> |
| Meat, fish, fruit, etc.   | 8,2         | 12,0        | 8,7         | 10,0        | 17,2         | 11,4        |
| Dairy products  | 17,8        | 12,4        | 8,5         | 8,3         | 9,5          | 8,6         |
| Grain mill products   | 7,6         | 6,3         | 5,5         | 5,8         | 14,3         | 15,3        |
| Other food products   | 8,2         | 2,7         | 7,3         | 4,8         | 2,7          | 9,3         |
| Beverages   | 8,7         | 15,9        | 12,3        | 5,2         | 15,6         | 13,2        |
| <b>Textiles, clothing, leather and footwear</b>                                       | <b>6,6</b>  | <b>2,6</b>  | <b>2,1</b>  | <b>1,6</b>  | <b>2,7</b>   | <b>-1,5</b> |
| Textiles  | 6,6         | 13,8        | 6,6         | -4,6        | 5,8          | 4,5         |
| Other textile products  | 11,8        | -5,4        | -3,7        | 3,9         | 0,6          | -7,9        |
| Knitted, crocheted articles   | -0,5        | 3,1         | -6,1        | 0,9         | 7,9          | 6,9         |
| Wearing apparel   | 5,2         | 3,0         | 5,3         | 5,1         | 1,5          | 0,8         |
| Leather and leather products  | 13,9        | 18,3        | 17,9        | 3,6         | 8,5          | -7,6        |
| Footwear  | -6,7        | -6,8        | -10,7       | -7,1        | 0,0          | 6,7         |
| <b>Wood and wood products, paper, publishing and printing</b>                         | <b>5,8</b>  | <b>10,1</b> | <b>7,2</b>  | <b>2,2</b>  | <b>3,3</b>   | <b>3,5</b>  |
| Sawmilling and planing of wood  | 18,5        | 11,4        | 29,2        | 12,7        | 3,8          | 30,3        |
| Products of wood  | 12,6        | 5,1         | 2,8         | -0,5        | 4,8          | 12,8        |
| Paper and paper products  | 9,7         | 17,9        | 14,5        | 6,3         | 6,5          | 3,3         |
| Publishing  | -2,6        | 4,1         | -3,9        | -4,2        | -2,2         | -3,8        |
| Printing, recorded media  | -3,6        | 0,2         | -5,8        | -2,8        | 0,1          | -3,6        |
| <b>Petroleum, chemical products, rubber and plastic products</b>                      | <b>-8,7</b> | <b>-5,6</b> | <b>4,0</b>  | <b>-8,0</b> | <b>-10,8</b> | <b>-5,1</b> |
| Coke, petroleum products and nuclear fuel   | -22,6       | -14,4       | 5,4         | -14,3       | -23,1        | -17,7       |
| Basic chemicals   | -10,0       | -8,1        | -4,2        | -14,9       | -20,5        | -10,9       |
| Other chemical products   | 11,6        | 8,0         | 12,3        | 3,9         | 6,6          | 18,4        |
| Rubber products   | 8,2         | 5,4         | 0,7         | -0,6        | -1,5         | 3,3         |
| Plastic products  | 4,2         | -3,9        | 0,6         | -1,0        | 7,2          | 4,8         |
| <b>Glass and non-metallic mineral products</b>  | <b>0,6</b>  | <b>-0,5</b> | <b>0,1</b>  | <b>-2,9</b> | <b>5,6</b>   | <b>1,4</b>  |
| Glass and glass products  | 2,8         | 8,6         | 6,2         | 6,7         | 11,5         | 8,2         |
| Non-metallic mineral products   | 0,2         | -2,1        | -1,1        | -4,8        | 4,2          | -0,3        |
| <b>Basic iron and steel, non-ferrous metal products, metal products and machinery</b> | <b>25,6</b> | <b>-7,1</b> | <b>-2,6</b> | <b>-5,7</b> | <b>-2,9</b>  | <b>-6,1</b> |
| Basic iron and steel products   | 36,3        | -19,5       | -10,2       | -12,1       | -8,9         | -21,8       |
| Non-ferrous metal products  | 10,6        | -7,5        | -8,8        | 2,5         | -4,1         | 6,0         |
| Structural metal products   | 37,0        | 7,2         | 15,2        | -5,4        | -1,0         | 7,8         |
| Other fabricated metal products   | 33,9        | 0,9         | -0,3        | -2,1        | 0,1          | -5,5        |
| General purpose machinery   | 10,0        | -8,3        | -5,8        | -14,0       | -5,5         | -11,6       |
| Special purpose machinery   | 25,5        | 6,1         | 13,2        | -5,5        | 8,2          | -3,9        |
| Household appliances  | 38,2        | 1,9         | 7,2         | 1,3         | 0,1          | 22,6        |
| <b>Electrical machinery</b>   | <b>58,4</b> | <b>6,0</b>  | <b>9,8</b>  | <b>0,4</b>  | <b>17,7</b>  | <b>3,8</b>  |
| <b>Radio, television and communication apparatus and professional equipment</b>       | <b>15,5</b> | <b>-8,9</b> | <b>-2,1</b> | <b>-3,1</b> | <b>11,9</b>  | <b>11,5</b> |
| Radio, television and communication apparatus   | 18,1        | -14,5       | -3,2        | -12,0       | 16,6         | 14,3        |
| Professional equipment  | 11,6        | 2,8         | 0,0         | 14,7        | 3,5          | 6,7         |
| <b>Motor vehicles, parts and accessories and other transport equipment</b>            | <b>17,8</b> | <b>1,9</b>  | <b>-2,3</b> | <b>0,1</b>  | <b>9,1</b>   | <b>3,5</b>  |
| Motor vehicles  | 16,9        | 1,4         | -7,0        | -0,9        | 7,8          | 9,8         |
| Bodies for motor vehicles, trailers and semi-trailers                                 | 15,2        | 8,3         | -2,8        | -7,7        | 12,4         | -7,6        |
| Parts and accessories   | 20,8        | 1,1         | -1,7        | 0,7         | 5,4          | -13,6       |
| Other transport equipment   | 15,0        | 3,5         | 17,4        | 6,3         | 26,3         | 12,3        |
| <b>Furniture and other manufacturing</b>  | <b>-4,1</b> | <b>-6,6</b> | <b>-5,0</b> | <b>5,1</b>  | <b>3,4</b>   | <b>4,8</b>  |
| Furniture   | 3,7         | -2,8        | 6,5         | 3,1         | 7,5          | -2,1        |
| Other manufacturing groups  | -6,5        | -7,7        | -8,2        | 5,9         | 1,9          | 6,7         |
| <b>Total</b>  | <b>8,4</b>  | <b>0,0</b>  | <b>2,6</b>  | <b>-1,5</b> | <b>1,7</b>   | <b>1,8</b>  |

**Table 13 – Contribution of each division and major group to the year-on-year percentage change in manufacturing sales at current prices (percentage points)**

| Manufacturing division and major group  | Jul-15      | Aug-15      | Sep-15      | Oct-15      | Nov-15      | Dec-15      |
|---|-------------|-------------|-------------|-------------|-------------|-------------|
| <b>Food and beverages</b>   | <b>2,0</b>  | <b>2,1</b>  | <b>1,9</b>  | <b>1,4</b>  | <b>2,6</b>  | <b>3,2</b>  |
| Meat, fish, fruit, etc.   | 0,5         | 0,7         | 0,5         | 0,5         | 0,9         | 0,8         |
| Dairy products  | 0,3         | 0,2         | 0,2         | 0,2         | 0,2         | 0,2         |
| Grain mill products   | 0,3         | 0,2         | 0,2         | 0,2         | 0,4         | 0,6         |
| Other food products   | 0,4         | 0,1         | 0,3         | 0,2         | 0,1         | 0,4         |
| Beverages   | 0,5         | 0,8         | 0,7         | 0,3         | 0,9         | 1,2         |
| <b>Textiles, clothing, leather and footwear</b>                                       | <b>0,2</b>  | <b>0,1</b>  | <b>0,1</b>  | <b>0,0</b>  | <b>0,1</b>  | <b>0,0</b>  |
| Textiles  | 0,0         | 0,0         | 0,0         | 0,0         | 0,0         | 0,0         |
| Other textile products  | 0,1         | 0,0         | 0,0         | 0,0         | 0,0         | -0,1        |
| Knitted, crocheted articles   | 0,0         | 0,0         | 0,0         | 0,0         | 0,0         | 0,0         |
| Wearing apparel   | 0,0         | 0,0         | 0,0         | 0,0         | 0,0         | 0,0         |
| Leather and leather products  | 0,0         | 0,1         | 0,1         | 0,0         | 0,0         | 0,0         |
| Footwear  | 0,0         | 0,0         | 0,0         | 0,0         | 0,0         | 0,0         |
| <b>Wood and wood products, paper, publishing and printing</b>                         | <b>0,5</b>  | <b>0,7</b>  | <b>0,6</b>  | <b>0,2</b>  | <b>0,3</b>  | <b>0,3</b>  |
| Sawmilling and planing of wood  | 0,1         | 0,1         | 0,2         | 0,1         | 0,0         | 0,1         |
| Products of wood  | 0,1         | 0,1         | 0,0         | 0,0         | 0,1         | 0,1         |
| Paper and paper products  | 0,3         | 0,6         | 0,5         | 0,2         | 0,2         | 0,1         |
| Publishing  | 0,0         | 0,0         | 0,0         | 0,0         | 0,0         | 0,0         |
| Printing, recorded media  | -0,1        | 0,0         | -0,1        | 0,0         | 0,0         | -0,1        |
| <b>Petroleum, chemical products, rubber and plastic products</b>                      | <b>-2,3</b> | <b>-1,3</b> | <b>0,9</b>  | <b>-2,0</b> | <b>-2,7</b> | <b>-1,2</b> |
| Coke, petroleum products and nuclear fuel   | -2,7        | -1,3        | 0,4         | -1,3        | -2,2        | -1,8        |
| Basic chemicals   | -0,6        | -0,4        | -0,2        | -0,8        | -1,2        | -0,5        |
| Other chemical products   | 0,6         | 0,4         | 0,7         | 0,2         | 0,4         | 1,0         |
| Rubber products   | 0,1         | 0,0         | 0,0         | 0,0         | 0,0         | 0,0         |
| Plastic products  | 0,1         | -0,1        | 0,0         | 0,0         | 0,3         | 0,1         |
| <b>Glass and non-metallic mineral products</b>  | <b>0,0</b>  | <b>0,0</b>  | <b>0,0</b>  | <b>-0,1</b> | <b>0,2</b>  | <b>0,0</b>  |
| Glass and glass products  | 0,0         | 0,0         | 0,0         | 0,0         | 0,1         | 0,0         |
| Non-metallic mineral products   | 0,0         | -0,1        | 0,0         | -0,1        | 0,1         | 0,0         |
| <b>Basic iron and steel, non-ferrous metal products, metal products and machinery</b> | <b>4,6</b>  | <b>-1,6</b> | <b>-0,6</b> | <b>-1,2</b> | <b>-0,6</b> | <b>-1,2</b> |
| Basic iron and steel products   | 1,6         | -1,4        | -0,7        | -0,7        | -0,5        | -1,2        |
| Non-ferrous metal products  | 0,5         | -0,4        | -0,4        | 0,1         | -0,2        | 0,3         |
| Structural metal products   | 0,6         | 0,1         | 0,2         | -0,1        | 0,0         | 0,1         |
| Other fabricated metal products   | 1,0         | 0,0         | 0,0         | -0,1        | 0,0         | -0,1        |
| General purpose machinery   | 0,2         | -0,2        | -0,1        | -0,3        | -0,1        | -0,2        |
| Special purpose machinery   | 0,6         | 0,2         | 0,3         | -0,1        | 0,2         | -0,1        |
| Household appliances  | 0,2         | 0,0         | 0,0         | 0,0         | 0,0         | 0,1         |
| <b>Electrical machinery</b>   | <b>1,4</b>  | <b>0,2</b>  | <b>0,3</b>  | <b>0,0</b>  | <b>0,5</b>  | <b>0,1</b>  |
| <b>Radio, television and communication apparatus and professional equipment</b>       | <b>0,2</b>  | <b>-0,1</b> | <b>0,0</b>  | <b>0,0</b>  | <b>0,1</b>  | <b>0,1</b>  |
| Radio, television and communication apparatus   | 0,1         | -0,1        | 0,0         | -0,1        | 0,1         | 0,1         |
| Professional equipment  | 0,0         | 0,0         | 0,0         | 0,1         | 0,0         | 0,0         |
| <b>Motor vehicles, parts and accessories and other transport equipment</b>            | <b>2,2</b>  | <b>0,2</b>  | <b>-0,3</b> | <b>0,0</b>  | <b>1,1</b>  | <b>0,3</b>  |
| Motor vehicles  | 1,1         | 0,1         | -0,5        | -0,1        | 0,5         | 0,5         |
| Bodies for motor vehicles, trailers and semi-trailers                                 | 0,1         | 0,0         | 0,0         | 0,0         | 0,1         | 0,0         |
| Parts and accessories   | 0,8         | 0,0         | -0,1        | 0,0         | 0,2         | -0,4        |
| Other transport equipment   | 0,2         | 0,1         | 0,3         | 0,1         | 0,3         | 0,2         |
| <b>Furniture and other manufacturing</b>  | <b>-0,1</b> | <b>-0,2</b> | <b>-0,2</b> | <b>0,2</b>  | <b>0,1</b>  | <b>0,2</b>  |
| Furniture   | 0,0         | 0,0         | 0,0         | 0,0         | 0,1         | 0,0         |
| Other manufacturing groups  | -0,2        | -0,2        | -0,2        | 0,1         | 0,0         | 0,2         |
| <b>Total</b>  | <b>8,4</b>  | <b>0,0</b>  | <b>2,6</b>  | <b>-1,5</b> | <b>1,7</b>  | <b>1,8</b>  |

**Table 14 – Seasonally adjusted manufacturing sales at current prices by division and major group (R million)**

| Manufacturing division and major group  | Aug-15         | Sep-15         | Oct-15         | Nov-15         | Dec-15         | Month-on-month % change |
|---|----------------|----------------|----------------|----------------|----------------|-------------------------|
| <b>Food and beverages</b>   | <b>36 275</b>  | <b>35 980</b>  | <b>36 071</b>  | <b>36 527</b>  | <b>37 271</b>  | <b>2,0</b>              |
| Meat, fish, fruit, etc.   | 9 904          | 9 811          | 9 919          | 10 045         | 10 345         | 3,0                     |
| Dairy products  | 3 318          | 3 262          | 3 325          | 3 346          | 3 397          | 1,5                     |
| Grain mill products   | 5 710          | 5 691          | 5 769          | 5 909          | 6 080          | 2,9                     |
| Other food products   | 6 856          | 6 916          | 6 909          | 6 820          | 7 093          | 4,0                     |
| Beverages   | 10 487         | 10 299         | 10 149         | 10 408         | 10 355         | -0,5                    |
| <b>Textiles, clothing, leather and footwear</b>                                       | <b>4 307</b>   | <b>4 337</b>   | <b>4 334</b>   | <b>4 242</b>   | <b>4 288</b>   | <b>1,1</b>              |
| Textiles  | 603            | 613            | 583            | 608            | 610            | 0,3                     |
| Other textile products  | 1 185          | 1 165          | 1 249          | 1 162          | 1 137          | -2,2                    |
| Knitted, crocheted articles   | 212            | 209            | 204            | 204            | 197            | -3,4                    |
| Wearing apparel   | 1 244          | 1 288          | 1 289          | 1 265          | 1 299          | 2,7                     |
| Leather and leather products  | 628            | 644            | 581            | 581            | 576            | -0,9                    |
| Footwear  | 434            | 417            | 428            | 422            | 469            | 11,1                    |
| <b>Wood and wood products, paper, publishing and printing</b>                         | <b>12 151</b>  | <b>12 281</b>  | <b>12 069</b>  | <b>12 106</b>  | <b>12 229</b>  | <b>1,0</b>              |
| Sawmilling and planing of wood  | 834            | 1 037          | 941            | 849            | 972            | 14,5                    |
| Products of wood  | 1 633          | 1 660          | 1 601          | 1 628          | 1 633          | 0,3                     |
| Paper and paper products  | 5 823          | 5 729          | 5 643          | 5 608          | 5 634          | 0,5                     |
| Publishing  | 1 651          | 1 637          | 1 666          | 1 700          | 1 773          | 4,3                     |
| Printing, recorded media  | 2 210          | 2 218          | 2 217          | 2 322          | 2 218          | -4,5                    |
| <b>Petroleum, chemical products, rubber and plastic products</b>                      | <b>35 205</b>  | <b>37 104</b>  | <b>37 187</b>  | <b>35 001</b>  | <b>35 756</b>  | <b>2,2</b>              |
| Coke, petroleum products and nuclear fuel   | 11 829         | 13 420         | 14 204         | 12 480         | 12 215         | -2,1                    |
| Basic chemicals   | 7 478          | 7 664          | 7 201          | 6 549          | 7 062          | 7,8                     |
| Other chemical products   | 9 237          | 9 310          | 8 986          | 9 104          | 9 645          | 5,9                     |
| Rubber products   | 1 431          | 1 392          | 1 417          | 1 388          | 1 353          | -2,5                    |
| Plastic products  | 5 230          | 5 317          | 5 379          | 5 481          | 5 481          | 0,0                     |
| <b>Glass and non-metallic mineral products</b>  | <b>4 665</b>   | <b>4 606</b>   | <b>4 579</b>   | <b>4 649</b>   | <b>4 495</b>   | <b>-3,3</b>             |
| Glass and glass products  | 790            | 764            | 794            | 807            | 776            | -3,8                    |
| Non-metallic mineral products   | 3 875          | 3 843          | 3 785          | 3 842          | 3 719          | -3,2                    |
| <b>Basic iron and steel, non-ferrous metal products, metal products and machinery</b> | <b>31 454</b>  | <b>32 536</b>  | <b>31 867</b>  | <b>31 183</b>  | <b>31 219</b>  | <b>0,1</b>              |
| Basic iron and steel products   | 8 633          | 9 143          | 8 896          | 8 345          | 8 059          | -3,4                    |
| Non-ferrous metal products  | 6 809          | 6 806          | 7 474          | 7 085          | 7 498          | 5,8                     |
| Structural metal products   | 2 874          | 2 932          | 2 679          | 2 686          | 2 832          | 5,4                     |
| Other fabricated metal products   | 5 250          | 5 349          | 5 237          | 5 169          | 4 952          | -4,2                    |
| General purpose machinery   | 2 812          | 2 735          | 2 531          | 2 675          | 2 654          | -0,8                    |
| Special purpose machinery   | 4 202          | 4 668          | 4 159          | 4 303          | 4 286          | -0,4                    |
| Household appliances  | 873            | 902            | 891            | 919            | 938            | 2,1                     |
| <b>Electrical machinery</b>   | <b>4 875</b>   | <b>5 150</b>   | <b>4 662</b>   | <b>5 165</b>   | <b>5 161</b>   | <b>-0,1</b>             |
| <b>Radio, television and communication apparatus and professional equipment</b>       | <b>1 691</b>   | <b>1 764</b>   | <b>1 814</b>   | <b>1 952</b>   | <b>1 961</b>   | <b>0,5</b>              |
| Radio, television and communication apparatus   | 1 024          | 1 102          | 1 074          | 1 249          | 1 255          | 0,5                     |
| Professional equipment  | 666            | 662            | 740            | 702            | 706            | 0,6                     |
| <b>Motor vehicles, parts and accessories and other transport equipment</b>            | <b>20 354</b>  | <b>20 549</b>  | <b>21 296</b>  | <b>20 687</b>  | <b>19 037</b>  | <b>-8,0</b>             |
| Motor vehicles  | 10 983         | 10 639         | 11 799         | 11 163         | 10 422         | -6,6                    |
| Bodies for motor vehicles, trailers and semi-trailers                                 | 813            | 786            | 761            | 794            | 688            | -13,4                   |
| Parts and accessories   | 6 110          | 5 982          | 6 173          | 6 148          | 4 986          | -18,9                   |
| Other transport equipment   | 2 448          | 3 143          | 2 562          | 2 582          | 2 941          | 13,9                    |
| <b>Furniture and other manufacturing</b>  | <b>4 826</b>   | <b>4 940</b>   | <b>5 290</b>   | <b>5 020</b>   | <b>5 287</b>   | <b>5,3</b>              |
| Furniture   | 1 144          | 1 203          | 1 183          | 1 177          | 1 183          | 0,5                     |
| Other manufacturing groups  | 3 682          | 3 736          | 4 107          | 3 842          | 4 104          | 6,8                     |
| <b>Total</b>  | <b>155 803</b> | <b>159 247</b> | <b>159 168</b> | <b>156 532</b> | <b>156 705</b> | <b>0,1</b>              |



## Survey information

- Introduction**
- 1 Statistics South Africa (Stats SA) conducts a monthly survey of the manufacturing industry, covering manufacturing enterprises. This statistical release contains the results of a sample drawn from the business sampling frame (BSF), with enhanced coverage of South African businesses (see 4). The release contains monthly indices of the volume of manufacturing production and monthly value of sales of manufactured products by division and major group.
  - 2 In accordance with international practice, the indices are usually re-based every five years to a new base year. The current base period of the index is 2010. Both estimated and seasonally adjusted figures are presented.
  - 3 In order to improve timeliness, some information for the latest month had to be estimated due to late response. These estimates will be revised in future statistical releases as soon as information becomes available.
  - 4 Stats SA is continuously updating its BSF, based on units registered for value added tax (VAT) and income tax (IT) obtained from the South African Revenue Service (SARS).
- Purpose of the survey**
- 5 The results of the monthly manufacturing production and sales survey are used to calculate the volume of manufacturing production indices in order to estimate the gross domestic product (GDP) and its components, which in turn are used to develop and monitor government policy. These indices provide an indicator of the real level of manufacturing activity in the economy.
- Special Data Dissemination Standard of the IMF**
- 6 The data in this statistical release adhere to the Special Data Dissemination Standard (SDDS) of the International Monetary Fund (IMF), which sets out standards on coverage, periodicity and timeliness of data, access by the public, integrity, and quality of the disseminated data.
- Scope of the survey**
- 7 This survey covers manufacturing enterprises, i.e. those conducting activities in -
    - the manufacturing, processing, making or packing of products;
    - the slaughtering of animals, including poultry; and
    - installation, assembly, completion, repair and related work.
- Classification**
- 8 The 1993 edition of the *Standard Industrial Classification of all Economic Activities (SIC)*, Fifth Edition, Report No. 09-90-02, was used to classify the statistical units in the survey. The SIC is based on the 1990 *International Standard Industrial Classification of all Economic Activities (ISIC)* with suitable adaptations for local conditions. Each enterprise is classified to an industry which reflects its predominant activity. Statistics in this publication are presented at SIC division (two digit) and major group (three digit) level.
- Collection rate**
- 9 The preliminary collection rate for the survey on manufacturing production and sales for December 2015 was 90,4%. The improved collection rate for November 2015 was 90,9%.
- Statistical unit**
- 10 The statistical unit for which information is compiled and published is an enterprise, defined as a legal unit or a combination of legal units that includes and directly controls all functions necessary to carry out its production activities. The statistical units are derived from and linked to the South African Revenue Service (SARS) administrative data.
- Revised figures**
- 11 Revised figures are mainly due to late submission of data to Stats SA, or respondents reporting revisions or corrections to their figures. Preliminary figures, as indicated in the relevant tables, are subject to change and when revised will not be indicated as such.

**Related publications** 12 Users may also wish to refer to the following publications available from Stats SA -

- *Bulletin of Statistics* issued quarterly; and
- *SA Statistics* issued annually.

**Rounding-off of figures** 13 Where necessary, the figures in the tables have been rounded off to the nearest digit shown. There may, therefore, be slight discrepancies between the sums of the constituent items and the totals shown.

**Historical data** 14 Historical manufacturing data are available on the Stats SA webpage. Click on the following link ([Time series data](#)) to access the data electronically.

**Past publications** 15 Past manufacturing releases are available on the Stats SA webpage. Click on the following link ([Past publications](#)) to access the releases electronically.

**Technical notes**

**Survey methodology and design**

- 1 The survey is conducted monthly. Questionnaires are sent to a sample of 3 027 enterprises from a population of 45 285 manufacturing enterprises. Completed questionnaires are required to be returned to Stats SA within 10 days after the end of the reference month. Fax and telephone reminders are used to follow up on non-respondents.
- 2 A stratified random sample was drawn at the Standard Industrial Classification (SIC) three-digit level in April 2015 from Stats SA’s business sampling frame (BSF). Strata were formed using a combination of the SIC and the measure of size classes for enterprises (see point 3 below).

The Neyman optimal allocation formula used to allocate samples to each stratum is given by a formula below:

$$n_h = \frac{N_h S_h}{\sum N_h S_h}$$

$N_h$  and  $S_h$  are the stratum population size and the stratum variance respectively.

**Class limits**

- 3 Each manufacturing major group is divided into four size groups. All large enterprises (size group one) are completely enumerated. Simple random sampling is applied to medium (size group two) and to small (size group three and four) enterprises. The total value of sales of manufactured products of large enterprises (size group one) in a major group is added to the weighted totals of size group two, three and four of that major group to reflect the total value of sales of the major group.

**Measure of size classes (Rand)**

| Enterprise size | Size group | Lower limits | Upper limits |
|-----------------|------------|--------------|--------------|
| Very small      | 4          | 1 882 214    | 15 000 000   |
| Small           | 3          | 15 000 001   | 39 000 000   |
| Medium          | 2          | 39 000 001   | 153 000 000  |
| Large           | 1          | 153 000 001  |              |

**Sample weighting**

- 4 For those strata not completely enumerated, the weights to produce estimates are the inverse ratio of the sampling fraction, modified to take account of non-response in the survey. Stratum estimates are calculated and then aggregated with the completely enumerated stratum to form major group and division estimates. These procedures are consistent with international best practice.

**Index of the volume of manufacturing production**

5 The index of the volume of manufacturing production, also known as a production index, is a statistical measure of the change in the volume of production. The production index of a major group is the ratio between the volume of production of a major group in a given period and the volume of production of the same major group in the base period. The current base period is 2010. The production in the base period is set at 100.

**Calculation of production index**

6 The calculation of the monthly production indices is based on the value of sales of products and articles manufactured and change in monthly value of stocks of manufactured products, after the effect of price changes has been eliminated through deflation using appropriate indices of the production price index (PPI). For 38 of the 44 major groups in manufacturing, the value of production is calculated from the value of sales and stocks of manufactured products obtained from the monthly survey of manufacturing enterprises.

- 7 More direct indicators are used for the value of production of the following major groups:
- tobacco;
  - coke and refined petroleum products;
  - basic iron and steel products;
  - basic precious and non-ferrous metal products;
  - motor vehicles; and
  - parts and accessories for motor vehicles.

The volume indices for these major groups are calculated on the basis of quantities. This method is used by the national statistical agencies of many other countries for petroleum products as the results are considered more satisfactory (mainly because these commodities are relatively homogeneous).

**Index weighting**

8 For indices, a weight is calculated for every major group according to the value added of the major group (i.e. output of a major group minus intermediate consumption) relative to the total value added of the manufacturing industry as a whole, based on the results of the most recent census of manufacturing, large sample survey (LSS) of the manufacturing industry or national accounts (NA) value added data. The production indices of all divisions are multiplied by the applicable weights and aggregated to produce the index for the total volume of manufacturing production. Weights between census/LSS/NA years are fixed. The table below reflects the period and the census/LSS/NA which were used as base year for the given period.

| Period       | Source                       |
|--------------|------------------------------|
| 1998 to 2000 | 1996 Census of Manufacturing |
| 2001 to 2004 | 2001 LSS                     |
| 2005 to 2009 | 2005 LSS                     |
| 2010 to 2015 | NA                           |

9 The weights reflect the importance of the major group/division to the total manufacturing industry. The weights change over time due to changes in the relative performance of industries, due to factors such as quality changes, changes in relative prices, and changes in customer preferences. New weights need to be calculated from time to time.

**Table E – Weights by division and major group**

| Manufacturing divisions and major groups  | Weights according to national accounts value added |              |              |
|---|--|--------------|--------------|
|   | 2010   | 2011         | 2012 – 2015  |
| <b>Food and beverages</b>   | <b>22,08</b>                                       | <b>23,82</b> | <b>24,44</b> |
| Meat, fish, fruit, etc.   | 4,41   | 5,19         | 5,39         |
| Dairy products  | 2,22   | 2,30         | 1,78         |
| Grain mill products   | 2,71   | 2,78         | 2,86         |
| Other food products   | 6,34   | 7,12         | 7,73         |
| Beverages   | 6,40   | 6,43         | 6,68         |
| <b>Textiles, clothing, leather and footwear</b>                                       | <b>3,45</b>  | <b>2,92</b>  | <b>3,17</b>  |
| Textiles  | 0,68   | 0,84         | 0,74         |
| Other textile products  | 0,43   | 0,39         | 0,47         |
| Knitted, crocheted articles   | 0,08   | 0,08         | 0,10         |
| Wearing apparel   | 1,55   | 0,99         | 1,19         |
| Leather and leather products  | 0,22   | 0,19         | 0,28         |
| Footwear  | 0,49   | 0,43         | 0,39         |
| <b>Wood and wood products, paper, publishing and printing</b>                         | <b>9,30</b>  | <b>9,46</b>  | <b>12,65</b> |
| Sawmilling and planing of wood  | 0,82   | 0,82         | 1,83         |
| Products of wood  | 1,66   | 1,76         | 2,55         |
| Paper and paper products  | 3,18   | 3,26         | 4,89         |
| Publishing  | 1,45   | 1,45         | 1,51         |
| Printing, recorded media  | 2,19   | 2,17         | 1,87         |
| <b>Petroleum, chemical products, rubber and plastic products</b>                      | <b>25,13</b>                                       | <b>22,52</b> | <b>22,13</b> |
| Coke, petroleum products and nuclear fuel   | 7,97   | 6,32         | 7,77         |
| Basic chemicals   | 5,81   | 4,85         | 3,81         |
| Other chemical products   | 7,39   | 7,06         | 6,49         |
| Rubber products   | 1,19   | 1,18         | 1,00         |
| Plastic products  | 2,77   | 3,11         | 3,06         |
| <b>Glass and non-metallic mineral products</b>  | <b>4,91</b>  | <b>4,42</b>  | <b>3,91</b>  |
| Glass and glass products  | 0,80   | 0,89         | 0,78         |
| Non-metallic mineral products   | 4,11   | 3,53         | 3,13         |
| <b>Basic iron and steel, non-ferrous metal products, metal products and machinery</b> | <b>20,30</b>                                       | <b>20,40</b> | <b>19,59</b> |
| Basic iron and steel products   | 4,42   | 4,71         | 3,38         |
| Non-ferrous metal products (including precious metals)                                | 3,44   | 3,46         | 3,18         |
| Structural metal products   | 1,87   | 2,21         | 1,89         |
| Other fabricated metal products   | 3,84   | 3,89         | 4,40         |
| General purpose machinery   | 2,36   | 2,44         | 2,44         |
| Special purpose machinery   | 3,48   | 3,04         | 3,44         |
| Household appliances  | 0,89   | 0,65         | 0,86         |
| <b>Electrical machinery</b>   | <b>2,44</b>  | <b>2,37</b>  | <b>1,70</b>  |
| <b>Radio, television and communication apparatus and professional equipment</b>       | <b>1,32</b>  | <b>1,45</b>  | <b>1,41</b>  |
| Radio, television and communication apparatus   | 0,77   | 0,88         | 0,90         |
| Professional equipment  | 0,55   | 0,57         | 0,51         |
| <b>Motor vehicles, parts and accessories and other transport equipment</b>            | <b>7,89</b>  | <b>8,58</b>  | <b>7,39</b>  |
| Motor vehicles  | 3,21   | 3,84         | 2,98         |
| Bodies for motor vehicles, trailers and semi-trailers                                 | 0,64   | 0,53         | 0,43         |
| Parts and accessories   | 2,88   | 3,00         | 2,77         |
| Other transport equipment   | 1,16   | 1,21         | 1,21         |
| <b>Furniture and other manufacturing</b>  | <b>3,18</b>  | <b>4,06</b>  | <b>3,61</b>  |
| Furniture   | 0,94   | 1,05         | 1,08         |
| Other manufacturing groups  | 2,24   | 3,01         | 2,53         |
| <b>Total</b>  | <b>100</b>   | <b>100</b>   | <b>100</b>   |

- Seasonal adjustment**      **10**      Seasonally adjusted estimates of all major groups are generated each month, using the X-12 Seasonal Adjustment Program developed by the US Bureau of the Census, 1968. Seasonal adjustment is a means of removing the estimated effects of normal seasonal variation from the series so that the effects of other influences on the series can be more clearly recognised. Seasonal adjustment does not aim to remove irregular or non-seasonal influences, which may be present in any particular month. Influences that are volatile or unsystematic can still make it difficult to interpret the movement of the series even after adjustment for seasonal variations. Therefore the month-to-month movements of seasonally adjusted estimates may not be reliable indicators of trend behaviour. The X-12-ARIMA procedure for manufacturing production and sales is described in more detail on the Stats SA website: [Click to Download Seasonal adjustment Manufacturing January 2015](#)
- Trend cycle**                      **11**      The trend is the long-term pattern or movement of a time series. The X-12 Seasonal Adjustment Programme is used for smoothing seasonally adjusted estimates to estimates of the underlying trend.
- Reliability of estimates**      **12**      Data presented in this publication are based on information obtained from a sample and are, therefore, subject to sampling variability; that is, they may differ from the figures that would have been produced if the data had been obtained from all enterprises in the manufacturing industry in South Africa. Estimates are subject to sampling and non-sampling errors.
- 13**      Inaccuracies may occur because of imperfections in reporting by enterprises and errors made in the collection and processing of the data. Inaccuracies of this kind are referred to as non-sampling errors. Every effort is made to minimise non-sampling errors by careful design of questionnaires, testing them in pilot studies, editing reported data and implementing efficient operating procedures. Fluctuations may occur in consecutive months as a result of seasonal and economic factors.
- Month-on-month percentage change**      **14**      The month-on-month percentage change in a variable for any given month is the change between that month and the previous month, expressed as a percentage of the latter.
- Year-on-year (annual) percentage change**      **15**      The year-on-year percentage change in a variable for any given period is the change between that period and the corresponding period of the previous year, expressed as a percentage of the latter.
- Index contribution (percentage points)**      **16**      The contribution (percentage points) of a major group or division to the total manufacturing production percentage change for a given period is calculated by multiplying the difference in the index of each major group or division by the weight of the major group or division and then dividing by the previous period total manufacturing index.
- Sales contribution (percentage points)**      **17**      The contribution (percentage points) of a division or major group to the percentage change in total manufacturing sales for a given period is calculated by multiplying the percentage change of each major group or division with its percentage contribution to the total sales of the previous period, divided by 100.

## Glossary

**Enterprise** The enterprise is a legal entity or a combination of legal units that includes and directly controls all functions necessary to carry out its production activities.

**Industry** An industry is made up of enterprises engaged in the same or similar kinds of economic activity. Industries are defined in the *System of National Accounts (SNA)* in the same way as in the *1993 Standard Industrial Classification of all Economic Activities*, Fifth Edition, Report No. 09-90-02 of January 1993 (SIC).

**Sales** Sales are the total value of sales and transfers-out of all own manufactured products/articles and the amounts received for installation, erection or assembly or other services rendered.

## Symbols and abbreviations

|          |   |
|----------|---|
| BSF      | Business sampling frame                                       |
| GDP      | Gross domestic product  |
| IMF      | International Monetary Fund                                   |
| ISIC     | International Standard Industrial Classification              |
| LSS      | Large sample survey   |
| NA       | National accounts   |
| PPI      | Producer price index  |
| Rm       | R million   |
| SIC      | Standard Industrial Classification of all Economic Activities |
| SARS     | South African Revenue Service                                 |
| SDDS     | Special Data Dissemination Standard                           |
| Stats SA | Statistics South Africa                                       |
| VAT      | Value added tax   |
| *        | Revised figures   |

## Technical enquiries

**Gerda Bruwer** Telephone number: (012) 310 8249  
 Email: [gerdab@statssa.gov.za](mailto:gerdab@statssa.gov.za)

## General information

Stats SA publishes approximately 300 different statistical releases each year. It is not economically viable to produce them in more than one of South Africa's eleven official languages. Since the releases are used extensively, not only locally but also by international economic and social-scientific communities, Stats SA releases are published in English.

Stats SA has copyright on this publication. Users may apply the information as they wish, provided that they acknowledge Stats SA as the source of the basic data wherever they process, apply, utilise, publish or distribute the data; and also that they specify that the relevant application and analysis (where applicable) result from their own processing of the data.

## Advance release calendar

An advance release calendar is disseminated on [www.statssa.gov.za](http://www.statssa.gov.za)

## Stats SA products

A complete set of Stats SA publications is available at the Stats SA Library and the following libraries:

National Library of South Africa, Pretoria Division  
National Library of South Africa, Cape Town Division  
Natal Society Library, Pietermaritzburg  
Library of Parliament, Cape Town  
Bloemfontein Public Library  
Johannesburg Public Library  
Eastern Cape Library Services, King William's Town  
Central Regional Library, Polokwane  
Central Reference Library, Mbombela  
Central Reference Collection, Kimberley  
Central Reference Library, Mmabatho

Stats SA also provides a subscription service.

## Electronic services

A large range of data is available via online services. For more details about our electronic data services, contact Stats SA's user information service at (012) 310 8600.

You can visit us on the Internet at: [www.statssa.gov.za](http://www.statssa.gov.za)

## General enquiries

|                              |   |
|------------------------------|---|
| User information services    | Telephone number: (012) 310 8600<br>Email address: <a href="mailto:info@statssa.gov.za">info@statssa.gov.za</a> |
| Orders/subscription services | Telephone number: (012) 310 8044<br>Email: <a href="mailto:magdaj@statssa.gov.za">magdaj@statssa.gov.za</a>     |
| Postal address               | Private Bag X44, Pretoria, 0001   |

*Produced by Stats SA*