



The South Africa I know, the home I understand

Statistical release

P3041.2

Manufacturing: Production and sales (Preliminary)

August 2015

**Embargoed until:
8 October 2015
13:00**

Enquiries:

Gerda Bruwer
Tel. (012) 310 8249

Forthcoming issue:

September 2015

Expected release date

10 November 2015

Contents

Production: results for August 20152

Table A – Key growth rates in the volume of manufacturing production2

Table B – Seasonally adjusted manufacturing production for the latest three months by division and major group (Base: 2010=100)3

Figure 1 – Volume of manufacturing production (Base: 2010=100)4

Figure 2 – Volume of manufacturing production (Base: 2010=100): year-on-year percentage change4

Sales: results for August 20155

Table C – Key growth rates in manufacturing sales at current prices5

Table D – Seasonally adjusted manufacturing sales at current prices for the latest three months by division5

Tables.....6

Table 1 – Index of the volume of manufacturing production (Base: 2010=100).....6

Table 2 – Year-on-year percentage change in the volume of manufacturing production6

Table 3 – Seasonally adjusted volume of manufacturing production6

Table 4 – Index of the volume of manufacturing production by division and major group (Base: 2010=100)7

Table 5 – Year-on-year percentage change in the volume of manufacturing production by division and major group (Base: 2010=100)8

Table 6 – Contribution of each division and major group to the year-on-year percentage change in the volume of manufacturing production (percentage points)9

Table 7 – Seasonally adjusted index of the volume of manufacturing production by division and major group (Base: 2010=100)10

Table 8 – Manufacturing sales at current prices (R million)11

Table 9 – Year-on-year percentage change in manufacturing sales at current prices.....11

Table 10 – Seasonally adjusted manufacturing sales at current prices11

Table 11 – Manufacturing sales at current prices by division and major group (R million)12

Table 12 – Year-on-year percentage change in manufacturing sales at current prices by division and major group.....13

Table 13 – Contribution of each division and major group to the year-on-year percentage change in manufacturing sales at current prices (percentage points)14

Table 14 – Seasonally adjusted manufacturing sales at current prices by division and major group (R million)15

Survey information16

Technical notes.....17

Table E – Weights by division and major group19

Glossary.....21

Technical enquiries21

General information.....22

Production: results for August 2015

Table A – Key growth rates in the volume of manufacturing production

	Mar-15	Apr-15	May-15	Jun-15	Jul-15	Aug-15
Year-on-year % change, unadjusted	4,0	-2,3	-1,8	-0,7	5,3	-0,2
Month-on-month % change, seasonally adjusted	1,2	-2,3	-0,9	1,0	0,1	0,4
3-month % change, seasonally adjusted ¹	-0,6	-0,1	-0,7	-1,5	-1,4	-0,3

¹ Percentage change between the previous 3 months and the 3 months ending in the month indicated.

Manufacturing production decreased by 0,2% in August 2015 compared with August 2014. The largest negative contribution was made by the basic iron and steel, non-ferrous metal products, metal products and machinery division (-8,0% and contributing -1,6 percentage points) – see Tables 5 and 6.

Large positive contributions were made by the following divisions:

- petroleum, chemical products, rubber and plastic products (4,8% and contributing 1,0 percentage point); and
- food and beverages (2,9% and contributing 0,7 of a percentage point).

Seasonally adjusted manufacturing production increased by 0,4% in August 2015 compared with July 2015. This followed month-on-month changes of 0,1% in July 2015 and 1,0% in June 2015 – see Table A.

Seasonally adjusted manufacturing production decreased by 0,3% in the three months ended August 2015 compared with the previous three months. Six of the ten manufacturing divisions reported negative growth rates over this period.

The main contributor to the 0,3% decrease was the basic iron and steel, non-ferrous metal products, metal products and machinery division (-2,1% and contributing -0,4 of a percentage point) – see Table B.

Table B – Seasonally adjusted manufacturing production for the latest three months by division and major group (Base: 2010=100)

Manufacturing division and major group	Weight (2012)	Mar – May 2015	Jun – Aug 2015	% change between Mar – May 2015 and Jun – Aug 2015	Contribution (% points) to the total % change
Food and beverages	24,44	111,9	112,8	0,8	0,2
Meat, fish, fruit, etc.	5,39	119,4	119,3	-0,1	0,0
Dairy products	1,78	113,5	117,2	3,3	0,1
Grain mill products	2,86	104,1	106,0	1,8	0,1
Other food products	7,73	104,3	106,5	2,1	0,2
Beverages	6,68	117,5	116,8	-0,6	0,0
Textiles, clothing, leather and footwear	3,17	98,0	94,9	-3,2	-0,1
Textiles	0,74	89,0	83,7	-6,0	0,0
Other textile products	0,47	92,8	91,9	-1,0	0,0
Knitted, crocheted articles	0,10	53,0	58,5	10,4	0,0
Wearing apparel	1,19	101,4	98,1	-3,3	0,0
Leather and leather products	0,28	125,7	124,6	-0,9	0,0
Footwear	0,39	102,1	97,9	-4,1	0,0
Wood and wood products, paper, publishing and printing	12,65	103,3	104,6	1,3	0,2
Sawmilling and planing of wood	1,83	128,3	125,9	-1,9	0,0
Products of wood	2,55	105,6	105,6	0,0	0,0
Paper and paper products	4,89	99,5	103,9	4,4	0,2
Publishing	1,51	93,5	92,8	-0,7	0,0
Printing, recorded media	1,87	93,1	94,1	1,1	0,0
Petroleum, chemical products, rubber and plastic products	22,13	106,1	105,2	-0,8	-0,2
Coke, petroleum products and nuclear fuel	7,77	94,4	88,7	-6,0	-0,4
Basic chemicals	3,81	116,1	118,6	2,2	0,1
Other chemical products	6,49	116,4	118,6	1,9	0,1
Rubber products	1,00	103,0	110,3	7,1	0,1
Plastic products	3,06	102,3	100,5	-1,8	-0,1
Glass and non-metallic mineral products	3,91	98,5	97,2	-1,3	0,0
Glass and glass products	0,78	92,8	91,3	-1,6	0,0
Non-metallic mineral products	3,13	99,9	98,7	-1,2	0,0
Basic iron and steel, non-ferrous metal products, metal products and machinery	19,59	102,2	100,1	-2,1	-0,4
Basic iron and steel products	3,38	89,5	82,7	-7,6	-0,2
Non-ferrous metal products	3,18	98,0	96,6	-1,4	0,0
Structural metal products	1,89	83,7	84,0	0,4	0,0
Other fabricated metal products	4,40	121,3	116,9	-3,6	-0,2
General purpose machinery	2,44	83,8	86,4	3,1	0,1
Special purpose machinery	3,44	114,7	114,8	0,1	0,0
Household appliances	0,86	112,1	112,6	0,4	0,0
Electrical machinery	1,70	100,8	112,9	12,0	0,2
Radio, television and communication apparatus and professional equipment	1,41	126,9	137,2	8,1	0,1
Radio, television and communication apparatus	0,90	136,6	154,2	12,9	0,1
Professional equipment	0,51	109,5	106,9	-2,4	0,0
Motor vehicles, parts and accessories and other transport equipment	7,39	116,1	113,5	-2,2	-0,2
Motor vehicles	2,98	143,5	139,5	-2,8	-0,1
Bodies for motor vehicles, trailers and semi-trailers	0,43	118,3	119,4	0,9	0,0
Parts and accessories	2,77	94,3	92,0	-2,4	-0,1
Other transport equipment	1,21	97,9	97,1	-0,8	0,0
Furniture and other manufacturing	3,61	92,7	88,9	-4,1	-0,1
Furniture	1,08	106,8	106,9	0,1	0,0
Other manufacturing groups	2,53	86,6	81,2	-6,2	-0,1
Total	100	106,3	106,0	-0,3	-0,3

Figure 1 – Volume of manufacturing production (Base: 2010=100)

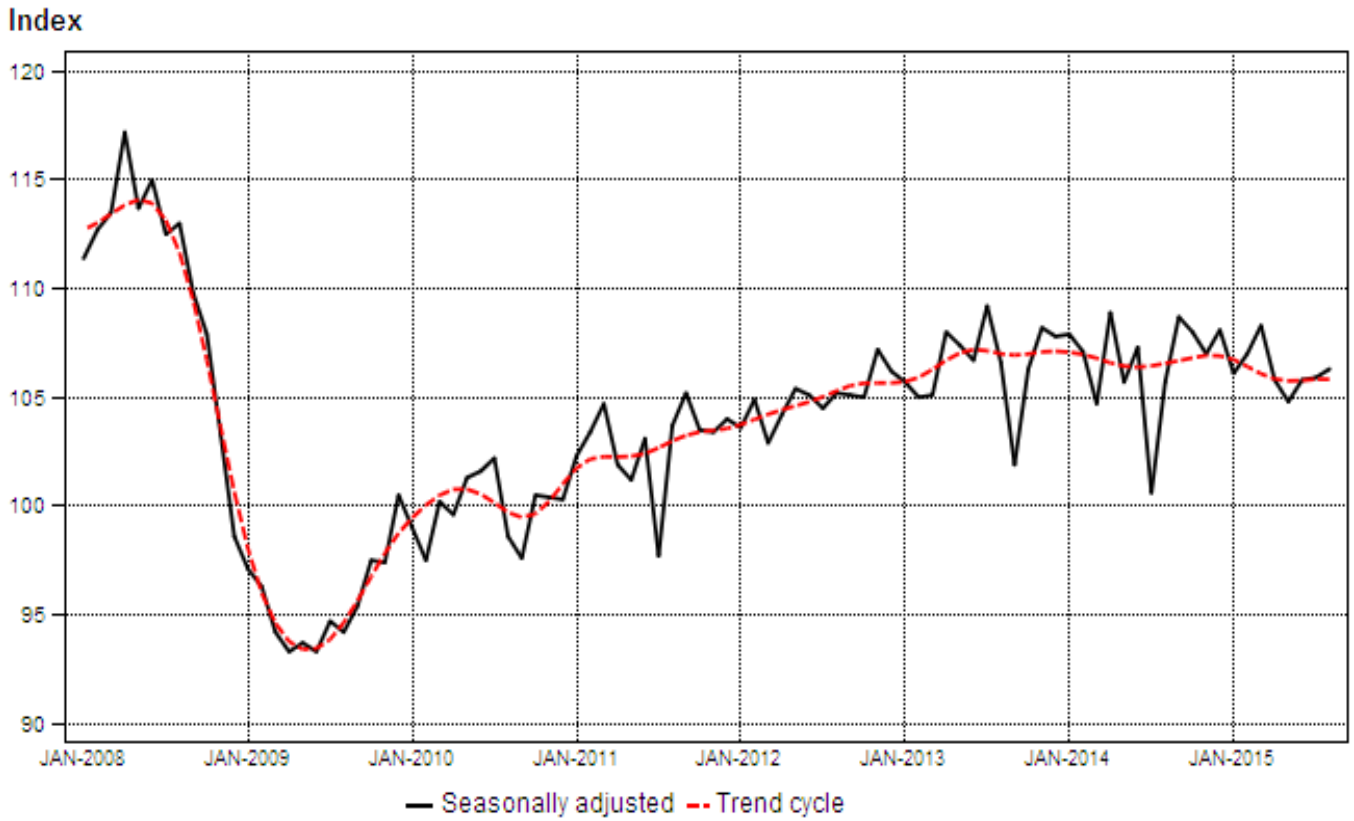
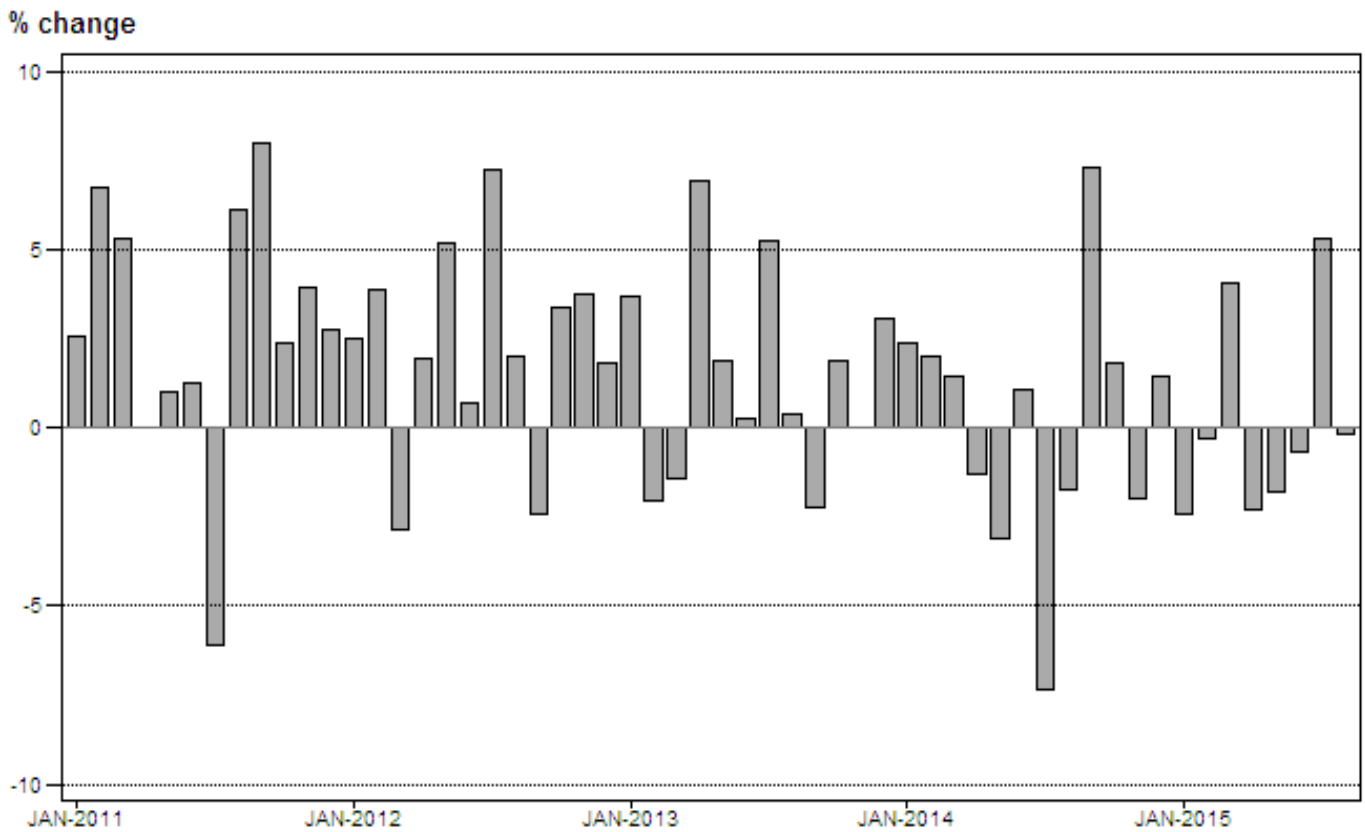


Figure 2 – Volume of manufacturing production (Base: 2010=100): year-on-year percentage change



Sales: results for August 2015

Table C – Key growth rates in manufacturing sales at current prices

	Mar-15	Apr-15	May-15	Jun-15	Jul-15	Aug-15
Year-on-year % change, unadjusted	6,7	-0,9	3,4	1,2	8,3	0,3
Month-on-month % change, seasonally adjusted	4,3	-2,7	2,4	-0,1	0,6	-0,1
3-month % change, seasonally adjusted ¹	-3,1	-1,0	1,4	1,2	2,0	0,9

¹ Percentage change between the previous 3 months and the 3 months ending in the month indicated.

Seasonally adjusted manufacturing sales decreased by 0,1% in August 2015 compared with July 2015. This followed month-on-month changes of 0,6% in July 2015 and -0,1% in June 2015 – see Table C.

Table D – Seasonally adjusted manufacturing sales at current prices for the latest three months by division

Manufacturing division	Mar – May 2015 (R million)	Jun – Aug 2015 (R million)	% change between Mar – May 2015 and Jun – Aug 2015	Contribution (% points) to the total % change
Food and beverages	103 661	106 397	2,6	0,6
Textiles, clothing, leather and footwear	12 643	12 719	0,6	0,0
Wood and wood products, paper, publishing and printing	34 835	35 881	3,0	0,2
Petroleum, chemical products, rubber and plastic products	109 170	106 244	-2,7	-0,6
Glass and non-metallic mineral products	13 791	13 824	0,2	0,0
Basic iron and steel, non-ferrous metal products, metal products and machinery	97 810	96 164	-1,7	-0,4
Electrical machinery	13 074	14 932	14,2	0,4
Radio, television and communication apparatus and professional equipment	4 795	5 038	5,1	0,1
Motor vehicles, parts and accessories and other transport equipment	59 016	61 613	4,4	0,6
Furniture and other manufacturing	14 194	14 152	-0,3	0,0
Total	462 989	466 962	0,9	0,9

PJ Lehohla
Statistician-General

Tables

Table 1 – Index of the volume of manufacturing production (Base: 2010=100)

Month	2009	2010	2011	2012	2013	2014	2015 ¹
Jan	82,7	84,5	86,7	88,9	92,2	94,4	92,1
Feb	91,1	92,2	98,4	102,2	100,1	102,1	101,8
Mar	97,6	103,8	109,3	106,2	104,7	106,2	110,5
Apr	86,6	93,4	93,4	95,2	101,8	100,5	98,2
May	94,2	100,6	101,6	106,9	108,9	105,5	103,6
Jun	94,5	102,9	104,2	104,9	105,2	106,3	105,6
Jul	98,2	105,3	98,9	106,1	111,7	103,5	109,0
Aug	96,3	101,6	107,8	110,0	110,4	108,5	108,3
Sep	99,9	102,2	110,4	107,7	105,3	113,0	
Oct	108,4	110,3	112,9	116,7	118,9	121,1	
Nov	107,9	112,2	116,6	121,0	121,0	118,6	
Dec	89,2	91,0	93,5	95,2	98,1	99,5	
Total	95,6	100,0	102,8	105,1	106,5	106,6	

¹ The latest three months are preliminary.

Table 2 – Year-on-year percentage change in the volume of manufacturing production

Month	2010	2011	2012	2013	2014	2015	2015 year-to-date
Jan	2,2	2,6	2,5	3,7	2,4	-2,4	-2,4
Feb	1,2	6,7	3,9	-2,1	2,0	-0,3	-1,3
Mar	6,4	5,3	-2,8	-1,4	1,4	4,0	0,6
Apr	7,9	0,0	1,9	6,9	-1,3	-2,3	-0,1
May	6,8	1,0	5,2	1,9	-3,1	-1,8	-0,5
Jun	8,9	1,3	0,7	0,3	1,0	-0,7	-0,5
Jul	7,2	-6,1	7,3	5,3	-7,3	5,3	0,3
Aug	5,5	6,1	2,0	0,4	-1,7	-0,2	0,3
Sep	2,3	8,0	-2,4	-2,2	7,3		
Oct	1,8	2,4	3,4	1,9	1,9		
Nov	4,0	3,9	3,8	0,0	-2,0		
Dec	2,0	2,7	1,8	3,0	1,4		
Total	4,6	2,8	2,2	1,3	0,1		

Table 3 – Seasonally adjusted volume of manufacturing production

Month	Index (Base: 2010=100)				Month-on-month % change			
	2012	2013	2014	2015	2012	2013	2014	2015
Jan	103,6	105,7	107,9	106,1	-0,4	-0,5	0,1	-1,9
Feb	104,9	105,0	107,1	107,0	1,3	-0,7	-0,7	0,8
Mar	102,9	105,1	104,7	108,3	-1,9	0,1	-2,2	1,2
Apr	104,2	108,0	108,9	105,8	1,3	2,8	4,0	-2,3
May	105,4	107,4	105,7	104,8	1,2	-0,6	-2,9	-0,9
Jun	105,1	106,7	107,3	105,8	-0,3	-0,7	1,5	1,0
Jul	104,5	109,2	100,6	105,9	-0,6	2,3	-6,2	0,1
Aug	105,2	106,6	105,7	106,3	0,7	-2,4	5,1	0,4
Sep	105,1	101,9	108,7		-0,1	-4,4	2,8	
Oct	105,0	106,3	108,0		-0,1	4,3	-0,6	
Nov	107,2	108,2	107,0		2,1	1,8	-0,9	
Dec	106,2	107,8	108,1		-0,9	-0,4	1,0	

Table 4 – Index of the volume of manufacturing production by division and major group (Base: 2010=100)

Manufacturing division and major group	Weight (2012)	Mar-15	Apr-15	May-15	¹ Jun-15	¹ Jul-15	¹ Aug-15
Food and beverages	24,44	110,5	104,4	107,8	110,6	113,4	113,4
Meat, fish, fruit, etc.	5,39	128,3	115,7	116,9	119,0	120,5	119,4
Dairy products	1,78	110,8	109,1	104,7	109,7	116,7	107,0
Grain mill products	2,86	108,9	98,0	102,2	108,8	108,4	108,4
Other food products	7,73	94,2	101,5	110,5	113,9	118,8	117,4
Beverages	6,68	115,7	100,3	100,4	101,1	102,8	107,8
Textiles, clothing, leather and footwear	3,17	104,6	93,3	98,2	89,9	100,6	96,0
Textiles	0,74	97,4	85,4	93,3	83,1	86,8	83,9
Other textile products	0,47	94,9	86,2	97,6	92,7	97,8	88,9
Knitted, crocheted articles	0,10	60,2	53,8	62,6	52,6	61,5	53,0
Wearing apparel	1,19	110,6	97,2	95,8	90,2	105,9	101,2
Leather and leather products	0,28	129,4	121,8	131,7	129,6	115,7	120,8
Footwear	0,39	104,6	94,3	100,1	79,6	112,4	104,3
Wood and wood products, paper, publishing and printing	12,65	105,6	92,8	99,3	104,5	108,6	105,5
Sawmilling and planing of wood	1,83	135,1	118,3	132,1	135,1	139,2	116,4
Products of wood	2,55	109,0	99,6	101,7	108,9	113,7	105,7
Paper and paper products	4,89	102,0	91,0	95,1	103,1	100,2	109,9
Publishing	1,51	94,0	79,2	84,5	89,3	91,7	96,3
Printing, recorded media	1,87	90,8	74,2	86,9	84,6	107,4	90,7
Petroleum, chemical products, rubber and plastic products	22,13	110,5	97,5	102,6	100,7	105,9	110,9
Coke, petroleum products and nuclear fuel	7,77	99,6	89,0	92,0	84,3	92,1	93,1
Basic chemicals	3,81	117,8	100,7	115,7	110,9	119,5	124,8
Other chemical products	6,49	121,1	104,5	110,1	114,2	116,1	126,7
Rubber products	1,00	115,3	96,0	110,3	109,8	111,4	111,0
Plastic products	3,06	105,0	100,5	95,0	97,9	100,4	105,1
Glass and non-metallic mineral products	3,91	97,2	94,4	102,1	101,3	106,5	100,6
Glass and glass products	0,78	83,4	81,9	83,9	84,2	102,8	95,6
Non-metallic mineral products	3,13	100,6	97,5	106,6	105,6	107,4	101,9
Basic iron and steel, non-ferrous metal products, metal products and machinery	19,59	114,3	97,3	99,2	102,8	103,9	101,1
Basic iron and steel products	3,38	101,5	96,1	88,0	80,9	86,9	75,6
Non-ferrous metal products	3,18	102,7	100,9	96,6	99,5	98,8	93,9
Structural metal products	1,89	90,4	73,0	83,3	82,9	89,1	86,0
Other fabricated metal products	4,40	133,8	113,1	114,3	122,9	124,1	121,9
General purpose machinery	2,44	85,4	77,9	85,4	85,5	85,8	95,3
Special purpose machinery	3,44	142,4	99,9	109,6	121,4	117,8	116,3
Household appliances	0,86	129,9	106,6	108,5	116,5	113,6	110,1
Electrical machinery	1,70	115,5	89,8	103,4	117,3	125,3	116,2
Radio, television and communication apparatus and professional equipment	1,41	129,4	105,4	122,1	133,1	133,2	151,1
Radio, television and communication apparatus	0,90	129,5	111,4	125,2	144,0	151,9	178,0
Professional equipment	0,51	129,3	94,7	116,5	113,6	99,9	103,2
Motor vehicles, parts and accessories and other transport equipment	7,39	123,4	104,4	117,6	119,8	123,8	114,1
Motor vehicles	2,98	144,8	125,3	147,8	145,5	154,6	141,7
Bodies for motor vehicles, trailers and semi-trailers	0,43	128,6	120,6	113,9	125,9	132,5	117,9
Parts and accessories	2,77	101,4	90,6	97,4	92,6	103,2	91,1
Other transport equipment	1,21	119,3	78,8	91,0	116,4	92,1	97,6
Furniture and other manufacturing	3,61	89,9	79,9	90,6	94,9	88,9	92,2
Furniture	1,08	100,3	98,4	102,2	110,5	114,6	107,0
Other manufacturing groups	2,53	85,5	72,0	85,6	88,3	77,8	85,9
Total	100	110,5	98,2	103,6	105,6	109,0	108,3

¹ The latest three months are preliminary.

Table 5 – Year-on-year percentage change in the volume of manufacturing production by division and major group (Base: 2010=100)

Manufacturing division and major group	Mar-15	Apr-15	May-15	Jun-15	Jul-15	Aug-15
Food and beverages	8,5	0,5	2,1	3,5	0,4	2,9
Meat, fish, fruit, etc.	14,3	4,6	2,3	3,7	1,9	4,6
Dairy products	5,7	9,2	6,2	17,1	15,2	3,8
Grain mill products	4,0	-3,2	-3,9	-1,5	1,1	2,2
Other food products	1,4	-7,0	5,6	2,2	-4,2	3,7
Beverages	13,9	6,0	-1,0	3,8	1,3	0,5
Textiles, clothing, leather and footwear	6,5	-1,8	3,9	0,6	0,3	-1,7
Textiles	22,7	5,3	10,4	-0,5	7,8	13,2
Other textile products	-3,7	-4,8	-2,9	-0,6	2,0	-10,8
Knitted, crocheted articles	-14,4	-20,4	-7,3	15,1	16,7	10,9
Wearing apparel	7,6	-0,1	3,1	-2,3	-0,7	-4,4
Leather and leather products	-7,6	-4,5	10,2	6,8	-0,2	13,9
Footwear	7,7	-9,1	0,1	5,7	-9,0	-13,9
Wood and wood products, paper, publishing and printing	-2,2	-2,6	-2,1	1,5	3,7	3,2
Sawmilling and planing of wood	11,8	10,6	19,5	12,3	12,7	3,8
Products of wood	10,2	2,3	5,3	8,6	15,5	0,8
Paper and paper products	-9,6	-3,0	-8,7	-1,8	1,0	12,9
Publishing	-15,6	-17,2	-12,6	-13,1	-8,4	-7,3
Printing, recorded media	-1,6	-12,4	-9,1	0,4	-5,1	-9,6
Petroleum, chemical products, rubber and plastic products	5,6	-2,9	-5,2	-6,0	-3,0	4,8
Coke, petroleum products and nuclear fuel	4,2	-11,4	-17,5	-21,4	-16,5	7,5
Basic chemicals	5,9	-5,7	4,7	5,4	0,3	5,6
Other chemical products	10,5	4,6	3,0	2,7	6,9	5,7
Rubber products	-10,1	9,6	3,0	9,1	13,2	12,7
Plastic products	4,1	2,7	-4,8	-4,6	1,9	-6,1
Glass and non-metallic mineral products	-0,1	-0,8	-0,1	-0,8	-3,5	-1,9
Glass and glass products	3,2	11,4	6,7	1,0	12,7	-1,7
Non-metallic mineral products	-0,8	-3,1	-1,4	-1,0	-6,8	-1,9
Basic iron and steel, non-ferrous metal products, metal products and machinery	1,7	-5,9	-7,0	-4,6	17,4	-8,0
Basic iron and steel products	9,3	-2,1	-17,8	-15,2	11,1	-23,6
Non-ferrous metal products	-8,1	-5,3	-14,2	-3,6	9,1	-13,6
Structural metal products	1,8	-7,9	0,0	-7,8	32,4	2,9
Other fabricated metal products	6,4	-5,2	-6,7	-6,5	31,2	-6,4
General purpose machinery	-11,4	-9,2	1,5	-6,5	9,6	0,0
Special purpose machinery	7,1	-4,0	5,5	4,5	8,2	-2,8
Household appliances	-6,1	-18,1	-15,8	9,5	36,2	-2,7
Electrical machinery	-0,5	-8,5	1,9	2,6	53,2	6,5
Radio, television and communication apparatus and professional equipment	-8,7	-18,5	-13,5	-3,6	8,8	-5,8
Radio, television and communication apparatus	-16,7	-24,5	-24,4	-4,3	8,3	-10,1
Professional equipment	10,3	-2,3	19,5	-1,7	10,4	10,6
Motor vehicles, parts and accessories and other transport equipment	13,2	4,5	9,4	10,8	36,5	-4,4
Motor vehicles	22,4	8,5	18,1	9,7	56,6	-6,5
Bodies for motor vehicles, trailers and semi-trailers	19,7	17,2	-2,4	9,5	39,5	6,2
Parts and accessories	1,8	1,6	0,9	3,7	23,7	-4,0
Other transport equipment	10,4	-7,0	5,7	32,1	6,7	-0,8
Furniture and other manufacturing	-8,0	-4,3	-3,0	-4,6	-16,6	-9,1
Furniture	-2,1	-9,7	-13,3	-6,5	-4,9	-7,9
Other manufacturing groups	-10,6	-0,8	3,3	-3,4	-22,7	-9,6
Total	4,0	-2,3	-1,8	-0,7	5,3	-0,2

Table 6 – Contribution of each division and major group to the year-on-year percentage change in the volume of manufacturing production (percentage points)

Manufacturing division and major group	Weight (2012)	Mar-15	Apr-15	May-15	Jun-15	Jul-15	Aug-15
Food and beverages	24,44	2,0	0,1	0,5	0,9	0,1	0,7
Meat, fish, fruit, etc.	5,39	0,8	0,3	0,1	0,2	0,1	0,3
Dairy products	1,78	0,1	0,2	0,1	0,3	0,3	0,1
Grain mill products	2,86	0,1	-0,1	-0,1	0,0	0,0	0,1
Other food products	7,73	0,1	-0,6	0,4	0,2	-0,4	0,3
Beverages	6,68	0,9	0,4	-0,1	0,2	0,1	0,0
Textiles, clothing, leather and footwear	3,17	0,2	-0,1	0,1	0,0	0,0	0,0
Textiles	0,74	0,1	0,0	0,1	0,0	0,0	0,1
Other textile products	0,47	0,0	0,0	0,0	0,0	0,0	0,0
Knitted, crocheted articles	0,10	0,0	0,0	0,0	0,0	0,0	0,0
Wearing apparel	1,19	0,1	0,0	0,0	0,0	0,0	-0,1
Leather and leather products	0,28	0,0	0,0	0,0	0,0	0,0	0,0
Footwear	0,39	0,0	0,0	0,0	0,0	0,0	-0,1
Wood and wood products, paper, publishing and printing	12,65	-0,3	-0,3	-0,3	0,2	0,5	0,4
Sawmilling and planing of wood	1,83	0,2	0,2	0,4	0,3	0,3	0,1
Products of wood	2,55	0,2	0,1	0,1	0,2	0,4	0,0
Paper and paper products	4,89	-0,5	-0,1	-0,4	-0,1	0,0	0,6
Publishing	1,51	-0,2	-0,2	-0,2	-0,2	-0,1	-0,1
Printing, recorded media	1,87	0,0	-0,2	-0,2	0,0	-0,1	-0,2
Petroleum, chemical products, rubber and plastic products	22,13	1,2	-0,6	-1,2	-1,3	-0,7	1,0
Coke, petroleum products and nuclear fuel	7,77	0,3	-0,9	-1,4	-1,7	-1,4	0,5
Basic chemicals	3,81	0,2	-0,2	0,2	0,2	0,0	0,2
Other chemical products	6,49	0,7	0,3	0,2	0,2	0,5	0,4
Rubber products	1,00	-0,1	0,1	0,0	0,1	0,1	0,1
Plastic products	3,06	0,1	0,1	-0,1	-0,1	0,1	-0,2
Glass and non-metallic mineral products	3,91	0,0	0,0	0,0	0,0	-0,1	-0,1
Glass and glass products	0,78	0,0	0,1	0,0	0,0	0,1	0,0
Non-metallic mineral products	3,13	0,0	-0,1	0,0	0,0	-0,2	-0,1
Basic iron and steel, non-ferrous metal products, metal products and machinery	19,59	0,4	-1,2	-1,4	-0,9	2,9	-1,6
Basic iron and steel products	3,38	0,3	-0,1	-0,6	-0,5	0,3	-0,7
Non-ferrous metal products	3,18	-0,3	-0,2	-0,5	-0,1	0,3	-0,4
Structural metal products	1,89	0,0	-0,1	0,0	-0,1	0,4	0,0
Other fabricated metal products	4,40	0,3	-0,3	-0,3	-0,4	1,3	-0,3
General purpose machinery	2,44	-0,3	-0,2	0,0	-0,1	0,2	0,0
Special purpose machinery	3,44	0,3	-0,1	0,2	0,2	0,3	-0,1
Household appliances	0,86	-0,1	-0,2	-0,2	0,1	0,3	0,0
Electrical machinery	1,70	0,0	-0,1	0,0	0,0	0,7	0,1
Radio, television and communication apparatus and professional equipment	1,41	-0,2	-0,3	-0,3	-0,1	0,1	-0,1
Radio, television and communication apparatus	0,90	-0,2	-0,3	-0,3	-0,1	0,1	-0,2
Professional equipment	0,51	0,1	0,0	0,1	0,0	0,0	0,0
Motor vehicles, parts and accessories and other transport equipment	7,39	1,0	0,3	0,7	0,8	2,4	-0,4
Motor vehicles	2,98	0,7	0,3	0,6	0,4	1,6	-0,3
Bodies for motor vehicles, trailers and semi-trailers	0,43	0,1	0,1	0,0	0,0	0,2	0,0
Parts and accessories	2,77	0,0	0,0	0,0	0,1	0,5	-0,1
Other transport equipment	1,21	0,1	-0,1	0,1	0,3	0,1	0,0
Furniture and other manufacturing	3,61	-0,3	-0,1	-0,1	-0,2	-0,6	-0,3
Furniture	1,08	0,0	-0,1	-0,2	-0,1	-0,1	-0,1
Other manufacturing groups	2,53	-0,2	0,0	0,1	-0,1	-0,6	-0,2
Total	100	4,0	-2,3	-1,8	-0,7	5,3	-0,2

Table 7 – Seasonally adjusted index of the volume of manufacturing production by division and major group (Base: 2010=100)

Manufacturing division and major group	Weight (2012)	Apr-15	May-15	Jun-15	Jul-15	Aug-15	Month-on-month % change
Food and beverages	24,44	111,9	110,8	113,5	111,7	113,3	1,4
Meat, fish, fruit, etc.	5,39	119,9	118,4	118,8	118,3	120,7	2,0
Dairy products	1,78	115,1	113,3	117,9	120,4	113,4	-5,8
Grain mill products	2,86	104,0	103,9	106,2	105,5	106,4	0,9
Other food products	7,73	102,4	103,6	107,9	103,5	108,0	4,3
Beverages	6,68	119,0	115,4	117,6	116,3	116,5	0,2
Textiles, clothing, leather and footwear	3,17	95,7	97,3	93,2	96,0	95,5	-0,5
Textiles	0,74	86,3	89,7	81,2	83,4	86,6	3,8
Other textile products	0,47	92,1	93,5	93,1	93,1	89,5	-3,9
Knitted, crocheted articles	0,10	52,5	54,4	54,9	62,8	57,8	-8,0
Wearing apparel	1,19	98,5	98,3	95,1	101,6	97,5	-4,0
Leather and leather products	0,28	125,0	130,4	125,5	119,6	128,7	7,6
Footwear	0,39	98,9	100,1	96,7	98,0	99,1	1,1
Wood and wood products, paper, publishing and printing	12,65	103,6	102,4	105,1	105,6	103,2	-2,3
Sawmilling and planing of wood	1,83	125,4	131,4	130,6	129,0	118,0	-8,5
Products of wood	2,55	106,1	103,7	107,9	107,0	101,9	-4,8
Paper and paper products	4,89	101,8	98,0	100,8	103,3	107,5	4,1
Publishing	1,51	92,6	93,7	94,1	93,1	91,3	-1,9
Printing, recorded media	1,87	92,1	90,8	96,4	97,0	88,9	-8,4
Petroleum, chemical products, rubber and plastic products	22,13	105,6	104,7	102,5	103,3	109,9	6,4
Coke, petroleum products and nuclear fuel	7,77	93,2	91,4	86,3	87,1	92,7	6,4
Basic chemicals	3,81	111,0	118,2	113,7	118,9	123,2	3,6
Other chemical products	6,49	116,7	116,6	116,1	114,1	125,5	10,0
Rubber products	1,00	101,7	102,7	105,4	108,4	117,2	8,1
Plastic products	3,06	107,9	96,7	100,1	100,3	101,2	0,9
Glass and non-metallic mineral products	3,91	98,4	99,5	97,2	98,0	96,5	-1,5
Glass and glass products	0,78	92,6	92,6	88,3	97,2	88,5	-9,0
Non-metallic mineral products	3,13	99,9	101,2	99,4	98,2	98,5	0,3
Basic iron and steel, non-ferrous metal products, metal products and machinery	19,59	101,6	98,1	100,9	101,7	97,8	-3,8
Basic iron and steel products	3,38	92,7	78,8	80,8	91,1	76,3	-16,2
Non-ferrous metal products	3,18	102,0	93,3	103,4	96,5	89,8	-6,9
Structural metal products	1,89	76,9	85,2	81,6	86,1	84,3	-2,1
Other fabricated metal products	4,40	120,3	114,6	119,5	116,4	114,9	-1,3
General purpose machinery	2,44	83,9	84,2	83,8	85,0	90,3	6,2
Special purpose machinery	3,44	110,0	115,3	114,4	116,1	113,8	-2,0
Household appliances	0,86	109,5	106,7	113,5	112,5	111,9	-0,5
Electrical machinery	1,70	96,4	102,0	107,3	120,0	111,5	-7,1
Radio, television and communication apparatus and professional equipment	1,41	120,9	130,2	137,1	136,4	138,2	1,3
Radio, television and communication apparatus	0,90	134,1	138,7	153,7	153,8	155,1	0,8
Professional equipment	0,51	97,4	115,0	107,4	105,4	108,0	2,5
Motor vehicles, parts and accessories and other transport equipment	7,39	113,8	116,6	114,4	116,1	110,1	-5,2
Motor vehicles	2,98	141,7	149,1	140,3	142,9	135,2	-5,4
Bodies for motor vehicles, trailers and semi-trailers	0,43	120,6	108,7	121,1	120,4	116,7	-3,1
Parts and accessories	2,77	93,6	92,3	91,2	95,9	89,0	-7,2
Other transport equipment	1,21	89,0	94,8	101,6	95,1	94,5	-0,6
Furniture and other manufacturing	3,61	94,5	90,0	93,0	83,8	89,9	7,3
Furniture	1,08	107,1	102,1	109,0	107,8	103,9	-3,6
Other manufacturing groups	2,53	89,0	84,8	86,1	73,5	83,9	14,1
Total	100	105,8	104,8	105,8	105,9	106,3	0,4

Table 8 – Manufacturing sales at current prices (R million)

Month	2009	2010	2011	2012	2013	2014	2015 ¹
Jan	89 616	90 215	95 994	107 218	116 532	130 303	129 333
Feb	101 570	101 983	111 651	125 750	131 788	146 300	143 332
Mar	110 013	115 516	126 331	133 374	137 740	151 487	161 661
Apr	94 153	101 853	108 005	117 453	133 321	143 553	142 263
May	100 754	109 489	117 657	130 302	141 196	148 043	153 030
Jun	102 477	113 772	122 233	130 849	139 275	155 933	157 801
Jul	104 040	113 046	113 051	127 702	146 362	145 849	158 025
Aug	105 013	110 779	125 128	134 503	143 958	156 037	156 546
Sep	109 202	113 369	133 135	131 890	140 221	162 333	
Oct	114 706	121 878	133 901	144 549	156 327	175 379	
Nov	116 959	126 703	139 235	153 267	162 140	170 409	
Dec	99 452	104 635	117 662	123 569	140 451	148 058	
Total	1 247 955	1 323 238	1 443 983	1 560 426	1 689 311	1 833 684	

¹ The latest three months are preliminary.

Table 9 – Year-on-year percentage change in manufacturing sales at current prices

Month	2010	2011	2012	2013	2014	2015	2015 year-to-date
Jan	0,7	6,4	11,7	8,7	11,8	-0,7	-0,7
Feb	0,4	9,5	12,6	4,8	11,0	-2,0	-1,4
Mar	5,0	9,4	5,6	3,3	10,0	6,7	1,5
Apr	8,2	6,0	8,7	13,5	7,7	-0,9	0,9
May	8,7	7,5	10,7	8,4	4,8	3,4	1,4
Jun	11,0	7,4	7,0	6,4	12,0	1,2	1,3
Jul	8,7	0,0	13,0	14,6	-0,4	8,3	2,3
Aug	5,5	13,0	7,5	7,0	8,4	0,3	2,1
Sep	3,8	17,4	-0,9	6,3	15,8		
Oct	6,3	9,9	8,0	8,1	12,2		
Nov	8,3	9,9	10,1	5,8	5,1		
Dec	5,2	12,4	5,0	13,7	5,4		
Total	6,0	9,1	8,1	8,3	8,5		

Table 10 – Seasonally adjusted manufacturing sales at current prices

Month	R million				Month-on-month % change			
	2012	2013	2014	2015	2012	2013	2014	2015
Jan	126 607	135 321	150 429	151 106	-0,4	1,3	0,8	-3,1
Feb	128 226	137 236	152 361	149 577	1,3	1,4	1,3	-1,0
Mar	127 227	137 093	146 982	155 959	-0,8	-0,1	-3,5	4,3
Apr	127 333	138 399	153 424	151 722	0,1	1,0	4,4	-2,7
May	129 504	140 318	148 691	155 308	1,7	1,4	-3,1	2,4
Jun	129 039	139 053	154 606	155 105	-0,4	-0,9	4,0	-0,1
Jul	127 651	145 282	144 441	156 043	-1,1	4,5	-6,6	0,6
Aug	130 606	141 234	154 441	155 814	2,3	-2,8	6,9	-0,1
Sep	129 113	136 383	156 652		-1,1	-3,4	1,4	
Oct	132 281	142 945	160 440		2,5	4,8	2,4	
Nov	136 083	145 651	154 942		2,9	1,9	-3,4	
Dec	133 599	149 256	155 921		-1,8	2,5	0,6	

Table 11 – Manufacturing sales at current prices by division and major group (R million)

Manufacturing division and major group	Mar-15	Apr-15	May-15	¹ Jun-15	¹ Jul-15	¹ Aug-15
Food and beverages	34 383	32 090	32 770	33 638	34 530	34 888
Meat, fish, fruit, etc.	9 894	8 778	9 113	9 422	9 642	9 634
Dairy products	3 232	3 047	3 117	3 111	3 298	3 131
Grain mill products	5 651	5 106	5 415	5 707	5 919	5 763
Other food products	5 895	6 805	6 613	6 717	6 945	6 835
Beverages	9 711	8 355	8 511	8 681	8 726	9 524
Textiles, clothing, leather and footwear	4 441	4 161	4 274	4 111	4 353	4 291
Textiles	654	597	609	595	583	579
Other textile products	1 231	1 160	1 263	1 193	1 278	1 165
Knitted, crocheted articles	206	210	218	184	223	203
Wearing apparel	1 318	1 237	1 205	1 075	1 262	1 288
Leather and leather products	583	576	601	639	575	627
Footwear	449	382	377	425	432	430
Wood and wood products, paper, publishing and printing	11 993	10 335	10 851	11 896	12 142	12 309
Sawmilling and planing of wood	872	838	933	935	987	825
Products of wood	1 695	1 543	1 561	1 688	1 686	1 683
Paper and paper products	5 650	4 744	4 938	5 689	5 261	5 920
Publishing	1 576	1 366	1 427	1 526	1 580	1 656
Printing, recorded media	2 200	1 843	1 992	2 058	2 629	2 225
Petroleum, chemical products, rubber and plastic products	36 446	34 452	37 409	36 626	35 879	35 564
Coke, petroleum products and nuclear fuel	13 216	13 666	15 540	14 466	13 242	11 924
Basic chemicals	7 227	6 670	7 411	7 123	7 252	7 545
Other chemical products	9 275	7 905	8 367	8 763	8 765	9 324
Rubber products	1 519	1 264	1 353	1 381	1 433	1 449
Plastic products	5 207	4 946	4 738	4 893	5 186	5 322
Glass and non-metallic mineral products	4 644	4 235	4 603	4 804	4 948	4 827
Glass and glass products	651	655	668	779	780	786
Non-metallic mineral products	3 993	3 581	3 935	4 025	4 168	4 041
Basic iron and steel, non-ferrous metal products, metal products and machinery	36 665	29 439	32 630	33 672	33 053	32 289
Basic iron and steel products	11 030	8 163	9 456	9 353	9 008	8 708
Non-ferrous metal products	7 385	6 668	7 045	7 112	7 219	6 765
Structural metal products	3 213	2 475	2 931	2 950	3 015	2 985
Other fabricated metal products	5 837	5 051	5 304	5 481	5 541	5 586
General purpose machinery	2 871	2 552	2 906	3 151	2 843	2 983
Special purpose machinery	5 286	3 767	4 160	4 653	4 549	4 410
Household appliances	1 043	763	828	972	879	853
Electrical machinery	5 127	3 789	4 260	5 244	5 390	5 117
Radio, television and communication apparatus and professional equipment	1 687	1 335	1 509	1 633	1 662	1 861
Radio, television and communication apparatus	914	703	790	925	1 017	1 176
Professional equipment	773	633	719	708	646	684
Motor vehicles, parts and accessories and other transport equipment	21 658	17 714	20 115	21 565	21 136	20 420
Motor vehicles	11 347	8 966	10 859	11 491	11 211	10 836
Bodies for motor vehicles, trailers and semi-trailers	876	819	789	795	874	835
Parts and accessories	6 448	5 860	6 154	6 308	6 697	6 253
Other transport equipment	2 987	2 068	2 314	2 971	2 354	2 497
Furniture and other manufacturing	4 617	4 712	4 610	4 613	4 932	4 981
Furniture	1 082	1 071	1 161	1 181	1 244	1 143
Other manufacturing groups	3 536	3 641	3 449	3 432	3 688	3 838
Total	161 661	142 263	153 030	157 801	158 025	156 546

¹ The latest three months are preliminary.

Table 12 – Year-on-year percentage change in manufacturing sales at current prices by division and major group

Manufacturing division and major group	Mar-15	Apr-15	May-15	Jun-15	Jul-15	Aug-15
Food and beverages	14,0	5,0	6,2	8,0	9,0	9,1
Meat, fish, fruit, etc.	18,2	5,5	3,7	5,3	8,2	10,2
Dairy products	19,0	12,7	15,8	18,7	17,8	11,4
Grain mill products	4,3	-5,3	-2,4	0,7	7,6	6,0
Other food products	4,9	5,3	9,3	9,9	7,9	1,5
Beverages	20,8	8,8	9,2	11,2	8,7	15,4
Textiles, clothing, leather and footwear	6,0	2,9	3,0	5,7	6,6	2,5
Textiles	15,1	9,7	2,7	2,8	6,6	13,8
Other textile products	8,7	-0,6	2,2	2,8	11,8	-5,7
Knitted, crocheted articles	-18,3	-7,9	-7,2	-1,6	2,8	5,7
Wearing apparel	9,2	9,3	5,5	1,2	4,5	3,1
Leather and leather products	-8,9	-1,9	6,6	10,6	13,9	18,3
Footwear	15,1	-1,3	-0,3	32,4	-6,7	-8,1
Wood and wood products, paper, publishing and printing	3,7	5,1	-0,2	5,3	5,9	9,6
Sawmilling and planing of wood	0,3	22,2	29,9	10,9	17,5	9,7
Products of wood	16,0	0,3	5,6	4,8	12,7	5,6
Paper and paper products	6,6	8,8	-0,8	8,5	9,6	18,0
Publishing	-11,1	-7,1	-6,7	-7,7	-2,6	0,3
Printing, recorded media	1,5	3,8	-8,4	5,6	-3,0	0,5
Petroleum, chemical products, rubber and plastic products	-0,1	-6,1	1,0	-3,2	-8,9	-4,9
Coke, petroleum products and nuclear fuel	-11,5	-16,1	-0,7	-8,7	-22,6	-13,6
Basic chemicals	0,2	-7,0	-1,1	-4,3	-10,1	-6,5
Other chemical products	18,3	9,0	9,8	9,0	11,6	7,6
Rubber products	-7,9	6,6	1,2	-0,5	8,2	9,8
Plastic products	7,5	3,0	-3,8	-4,6	3,1	-4,2
Glass and non-metallic mineral products	8,9	-5,2	0,1	-0,4	0,6	-0,7
Glass and glass products	11,1	6,2	8,1	5,7	2,8	5,5
Non-metallic mineral products	8,6	-7,0	-1,1	-1,5	0,1	-1,8
Basic iron and steel, non-ferrous metal products, metal products and machinery	9,7	-4,3	0,7	-3,7	25,2	-5,7
Basic iron and steel products	13,0	-17,1	-6,1	-16,2	36,5	-19,7
Non-ferrous metal products	8,8	5,9	-1,4	-4,8	9,8	-7,9
Structural metal products	10,9	-1,5	11,6	-0,3	37,0	8,7
Other fabricated metal products	16,2	2,7	1,6	0,4	32,7	4,3
General purpose machinery	-9,2	-2,8	7,5	3,6	9,7	-5,0
Special purpose machinery	10,6	1,2	13,8	17,4	25,5	11,1
Household appliances	3,6	-7,3	-15,3	5,5	38,6	1,9
Electrical machinery	7,9	-3,4	4,1	4,9	59,1	6,0
Radio, television and communication apparatus and professional equipment	-6,4	-13,1	-13,8	-0,2	15,4	-7,0
Radio, television and communication apparatus	-14,1	-24,2	-26,9	0,8	18,1	-13,3
Professional equipment	4,6	3,9	7,3	-1,5	11,6	5,9
Motor vehicles, parts and accessories and other transport equipment	7,9	4,1	14,9	5,3	17,8	1,9
Motor vehicles	2,9	0,5	20,9	-2,4	16,9	1,5
Bodies for motor vehicles, trailers and semi-trailers	13,2	12,3	-2,4	-3,3	15,2	8,7
Parts and accessories	14,4	10,3	9,0	12,0	20,9	1,5
Other transport equipment	13,8	0,3	11,3	31,9	15,0	2,8
Furniture and other manufacturing	-3,5	-0,4	-3,4	-4,8	-4,1	-5,5
Furniture	9,7	-1,3	-1,4	-1,3	3,7	-2,2
Other manufacturing groups	-6,9	-0,1	-4,1	-6,0	-6,4	-6,5
Total	6,7	-0,9	3,4	1,2	8,3	0,3

Table 13 – Contribution of each division and major group to the year-on-year percentage change in manufacturing sales at current prices (percentage points)

Manufacturing division and major group	Mar-15	Apr-15	May-15	Jun-15	Jul-15	Aug-15
Food and beverages	2,8	1,1	1,3	1,6	2,0	1,9
Meat, fish, fruit, etc.	1,0	0,3	0,2	0,3	0,5	0,6
Dairy products	0,3	0,2	0,3	0,3	0,3	0,2
Grain mill products	0,2	-0,2	-0,1	0,0	0,3	0,2
Other food products	0,2	0,2	0,4	0,4	0,3	0,1
Beverages	1,1	0,5	0,5	0,6	0,5	0,8
Textiles, clothing, leather and footwear	0,2	0,1	0,1	0,1	0,2	0,1
Textiles	0,1	0,0	0,0	0,0	0,0	0,0
Other textile products	0,1	0,0	0,0	0,0	0,1	0,0
Knitted, crocheted articles	0,0	0,0	0,0	0,0	0,0	0,0
Wearing apparel	0,1	0,1	0,0	0,0	0,0	0,0
Leather and leather products	0,0	0,0	0,0	0,0	0,0	0,1
Footwear	0,0	0,0	0,0	0,1	0,0	0,0
Wood and wood products, paper, publishing and printing	0,3	0,3	0,0	0,4	0,5	0,7
Sawmilling and planing of wood	0,0	0,1	0,1	0,1	0,1	0,0
Products of wood	0,2	0,0	0,1	0,0	0,1	0,1
Paper and paper products	0,2	0,3	0,0	0,3	0,3	0,6
Publishing	-0,1	-0,1	-0,1	-0,1	0,0	0,0
Printing, recorded media	0,0	0,0	-0,1	0,1	-0,1	0,0
Petroleum, chemical products, rubber and plastic products	0,0	-1,6	0,3	-0,8	-2,4	-1,2
Coke, petroleum products and nuclear fuel	-1,1	-1,8	-0,1	-0,9	-2,7	-1,2
Basic chemicals	0,0	-0,3	-0,1	-0,2	-0,6	-0,3
Other chemical products	0,9	0,5	0,5	0,5	0,6	0,4
Rubber products	-0,1	0,1	0,0	0,0	0,1	0,1
Plastic products	0,2	0,1	-0,1	-0,2	0,1	-0,1
Glass and non-metallic mineral products	0,3	-0,2	0,0	0,0	0,0	0,0
Glass and glass products	0,0	0,0	0,0	0,0	0,0	0,0
Non-metallic mineral products	0,2	-0,2	0,0	0,0	0,0	0,0
Basic iron and steel, non-ferrous metal products, metal products and machinery	2,1	-0,9	0,2	-0,8	4,6	-1,3
Basic iron and steel products	0,8	-1,2	-0,4	-1,2	1,7	-1,4
Non-ferrous metal products	0,4	0,3	-0,1	-0,2	0,4	-0,4
Structural metal products	0,2	0,0	0,2	0,0	0,6	0,2
Other fabricated metal products	0,5	0,1	0,1	0,0	0,9	0,1
General purpose machinery	-0,2	-0,1	0,1	0,1	0,2	-0,1
Special purpose machinery	0,3	0,0	0,3	0,4	0,6	0,3
Household appliances	0,0	0,0	-0,1	0,0	0,2	0,0
Electrical machinery	0,2	-0,1	0,1	0,2	1,4	0,2
Radio, television and communication apparatus and professional equipment	-0,1	-0,1	-0,2	0,0	0,2	-0,1
Radio, television and communication apparatus	-0,1	-0,2	-0,2	0,0	0,1	-0,1
Professional equipment	0,0	0,0	0,0	0,0	0,0	0,0
Motor vehicles, parts and accessories and other transport equipment	1,0	0,5	1,8	0,7	2,2	0,2
Motor vehicles	0,2	0,0	1,3	-0,2	1,1	0,1
Bodies for motor vehicles, trailers and semi-trailers	0,1	0,1	0,0	0,0	0,1	0,0
Parts and accessories	0,5	0,4	0,3	0,4	0,8	0,1
Other transport equipment	0,2	0,0	0,2	0,5	0,2	0,0
Furniture and other manufacturing	-0,1	0,0	-0,1	-0,1	-0,1	-0,2
Furniture	0,1	0,0	0,0	0,0	0,0	0,0
Other manufacturing groups	-0,2	0,0	-0,1	-0,1	-0,2	-0,2
Total	6,7	-0,9	3,4	1,2	8,3	0,3

Table 14 – Seasonally adjusted manufacturing sales at current prices by division and major group (R million)

Manufacturing division and major group	Apr-15	May-15	Jun-15	Jul-15	Aug-15	Month-on-month % change
Food and beverages	34 484	34 751	34 941	35 498	35 958	1,3
Meat, fish, fruit, etc.	9 351	9 287	9 396	9 569	9 744	1,8
Dairy products	3 172	3 272	3 297	3 326	3 307	-0,6
Grain mill products	5 313	5 432	5 525	5 709	5 695	-0,2
Other food products	6 820	6 723	6 840	6 885	6 797	-1,3
Beverages	9 828	10 037	9 884	10 008	10 416	4,1
Textiles, clothing, leather and footwear	4 217	4 188	4 142	4 267	4 310	1,0
Textiles	593	582	580	580	604	4,1
Other textile products	1 183	1 199	1 178	1 211	1 188	-1,9
Knitted, crocheted articles	189	194	191	206	218	5,8
Wearing apparel	1 250	1 217	1 151	1 232	1 236	0,3
Leather and leather products	586	591	613	611	634	3,8
Footwear	415	405	430	426	430	0,9
Wood and wood products, paper, publishing and printing	11 872	11 371	11 888	12 056	11 937	-1,0
Sawmilling and planing of wood	896	937	924	943	773	-18,0
Products of wood	1 656	1 622	1 625	1 616	1 637	1,3
Paper and paper products	5 423	5 130	5 433	5 511	5 724	3,9
Publishing	1 578	1 567	1 574	1 598	1 581	-1,1
Printing, recorded media	2 319	2 116	2 332	2 388	2 222	-7,0
Petroleum, chemical products, rubber and plastic products	35 792	37 392	35 677	35 124	35 443	0,9
Coke, petroleum products and nuclear fuel	13 173	14 744	13 359	12 412	11 958	-3,7
Basic chemicals	7 294	7 519	7 289	7 362	7 631	3,7
Other chemical products	8 684	8 836	8 747	8 820	9 196	4,3
Rubber products	1 358	1 358	1 317	1 425	1 473	3,4
Plastic products	5 282	4 936	4 965	5 105	5 184	1,5
Glass and non-metallic mineral products	4 615	4 633	4 530	4 621	4 673	1,1
Glass and glass products	770	758	764	771	774	0,4
Non-metallic mineral products	3 845	3 875	3 766	3 849	3 899	1,3
Basic iron and steel, non-ferrous metal products, metal products and machinery	31 055	32 384	32 063	32 350	31 751	-1,9
Basic iron and steel products	8 246	8 917	8 709	8 987	8 597	-4,3
Non-ferrous metal products	7 036	7 014	6 902	7 115	6 741	-5,3
Structural metal products	2 647	2 965	2 871	2 955	2 925	-1,0
Other fabricated metal products	5 338	5 331	5 251	5 222	5 341	2,3
General purpose machinery	2 813	2 838	2 956	2 831	2 924	3,3
Special purpose machinery	4 178	4 484	4 467	4 367	4 354	-0,3
Household appliances	797	834	907	873	868	-0,6
Electrical machinery	4 145	4 397	4 904	5 165	4 863	-5,8
Radio, television and communication apparatus and professional equipment	1 532	1 626	1 672	1 663	1 703	2,4
Radio, television and communication apparatus	844	923	997	989	1 024	3,5
Professional equipment	688	703	675	675	679	0,6
Motor vehicles, parts and accessories and other transport equipment	19 242	19 890	20 685	20 567	20 361	-1,0
Motor vehicles	9 957	10 703	11 075	10 751	11 005	2,4
Bodies for motor vehicles, trailers and semi-trailers	828	799	783	784	823	5,0
Parts and accessories	6 132	6 016	6 216	6 625	6 139	-7,3
Other transport equipment	2 324	2 371	2 612	2 407	2 393	-0,6
Furniture and other manufacturing	4 768	4 676	4 602	4 734	4 816	1,7
Furniture	1 167	1 164	1 149	1 167	1 143	-2,1
Other manufacturing groups	3 601	3 512	3 453	3 566	3 672	3,0
Total	151 722	155 308	155 105	156 043	155 814	-0,1

Survey information

- Introduction**
- 1 Statistics South Africa (Stats SA) conducts a monthly survey of the manufacturing industry, covering manufacturing enterprises. This statistical release contains the results of a sample drawn from the business sampling frame (BSF), with enhanced coverage of South African businesses (see 4). The release contains monthly indices of the volume of manufacturing production and monthly value of sales of manufactured products by division and major group.
 - 2 In accordance with international practice, the indices are usually re-based every five years to a new base year. The current base period of the index is 2010. Both estimated and seasonally adjusted figures are presented.
 - 3 In order to improve timeliness, some information for the latest month had to be estimated due to late response. These estimates will be revised in future statistical releases as soon as information becomes available.
 - 4 Stats SA is continuously updating its BSF, based on units registered for value added tax (VAT) and income tax (IT) obtained from the South African Revenue Service (SARS).
- Purpose of the survey**
- 5 The results of the monthly manufacturing production and sales survey are used to calculate the volume of manufacturing production indices in order to estimate the gross domestic product (GDP) and its components, which in turn are used to develop and monitor government policy. These indices provide an indicator of the real level of manufacturing activity in the economy.
- Special Data Dissemination Standard of the IMF**
- 6 The data in this statistical release adhere to the Special Data Dissemination Standard (SDDS) of the International Monetary Fund (IMF), which sets out standards on coverage, periodicity and timeliness of data, access by the public, integrity, and quality of the disseminated data.
- Scope of the survey**
- 7 This survey covers manufacturing enterprises, i.e. those conducting activities in -
 - the manufacturing, processing, making or packing of products;
 - the slaughtering of animals, including poultry; and
 - installation, assembly, completion, repair and related work.
- Classification**
- 8 The 1993 edition of the *Standard Industrial Classification of all Economic Activities (SIC)*, Fifth Edition, Report No. 09-90-02, was used to classify the statistical units in the survey. The SIC is based on the 1990 *International Standard Industrial Classification of all Economic Activities (ISIC)* with suitable adaptations for local conditions. Each enterprise is classified to an industry which reflects its predominant activity. Statistics in this publication are presented at SIC division (two digit) and major group (three digit) level.
- Collection rate**
- 9 The preliminary collection rate for the survey on manufacturing production and sales for August 2015 was 87,2%. The improved collection rate for July 2015 was 91,2%.
- Statistical unit**
- 10 The statistical unit for which information is compiled and published is an enterprise, defined as a legal unit or a combination of legal units that includes and directly controls all functions necessary to carry out its production activities. The statistical units are derived from and linked to the South African Revenue Service (SARS) administrative data.
- Revised figures**
- 11 Revised figures are mainly due to late submission of data to Stats SA, or respondents reporting revisions or corrections to their figures. Preliminary figures, as indicated in the relevant tables, are subject to change and when revised will not be indicated as such.

Related publications 12 Users may also wish to refer to the following publications available from Stats SA -

- *Bulletin of Statistics* issued quarterly; and
- *SA Statistics* issued annually.

Rounding-off of figures 13 Where necessary, the figures in the tables have been rounded off to the nearest digit shown. There may, therefore, be slight discrepancies between the sums of the constituent items and the totals shown.

Historical data 14 Historical manufacturing data are available on the Stats SA webpage. Click on the following link ([Time series data](#)) to access the data electronically.

Past publications 15 Past manufacturing releases are available on the Stats SA webpage. Click on the following link ([Past publications](#)) to access the releases electronically.

Technical notes

Survey methodology and design

- 1 The survey is conducted monthly. Questionnaires are sent to a sample of 3 027 enterprises from a population of 45 285 manufacturing enterprises. Completed questionnaires are required to be returned to Stats SA within 10 days after the end of the reference month. Fax and telephone reminders are used to follow up on non-respondents.
- 2 A stratified random sample was drawn at the Standard Industrial Classification (SIC) three-digit level in April 2015 from Stats SA’s business sampling frame (BSF). Strata were formed using a combination of the SIC and the measure of size classes for enterprises (see point 3 below).

The Neyman optimal allocation formula used to allocate samples to each stratum is given by a formula below:

$$n_h = \frac{N_h S_h}{\sum N_h S_h}$$

N_h and S_h are the stratum population size and the stratum variance respectively.

Class limits

- 3 Each manufacturing major group is divided into four size groups. All large enterprises (size group one) are completely enumerated. Simple random sampling is applied to medium (size group two) and to small (size group three and four) enterprises. The total value of sales of manufactured products of large enterprises (size group one) in a major group is added to the weighted totals of size group two, three and four of that major group to reflect the total value of sales of the major group.

Measure of size classes (Rand)

Enterprise size	Size group	Lower limits	Upper limits
Very small	4	1 882 214	15 000 000
Small	3	15 000 001	39 000 000
Medium	2	39 000 001	153 000 000
Large	1	153 000 001	

Sample weighting

- 4 For those strata not completely enumerated, the weights to produce estimates are the inverse ratio of the sampling fraction, modified to take account of non-response in the survey. Stratum estimates are calculated and then aggregated with the completely enumerated stratum to form major group and division estimates. These procedures are consistent with international best practice.

Index of the volume of manufacturing production

5 The index of the volume of manufacturing production, also known as a production index, is a statistical measure of the change in the volume of production. The production index of a major group is the ratio between the volume of production of a major group in a given period and the volume of production of the same major group in the base period. The current base period is 2010. The production in the base period is set at 100.

Calculation of production index

6 The calculation of the monthly production indices is based on the value of sales of products and articles manufactured and change in monthly value of stocks of manufactured products, after the effect of price changes has been eliminated through deflation using appropriate indices of the production price index (PPI). For 38 of the 44 major groups in manufacturing, the value of production is calculated from the value of sales and stocks of manufactured products obtained from the monthly survey of manufacturing enterprises.

- 7 More direct indicators are used for the value of production of the following major groups:
- tobacco;
 - coke and refined petroleum products;
 - basic iron and steel products;
 - basic precious and non-ferrous metal products;
 - motor vehicles; and
 - parts and accessories for motor vehicles.

The volume indices for these major groups are calculated on the basis of quantities. This method is used by the national statistical agencies of many other countries for petroleum products as the results are considered more satisfactory (mainly because these commodities are relatively homogeneous).

Index weighting

8 For indices, a weight is calculated for every major group according to the value added of the major group (i.e. output of a major group minus intermediate consumption) relative to the total value added of the manufacturing industry as a whole, based on the results of the most recent census of manufacturing, large sample survey (LSS) of the manufacturing industry or national accounts (NA) value added data. The production indices of all divisions are multiplied by the applicable weights and aggregated to produce the index for the total volume of manufacturing production. Weights between census/LSS/NA years are fixed. The table below reflects the period and the census/LSS/NA which were used as base year for the given period.

Period	Source
1998 to 2000	1996 Census of Manufacturing
2001 to 2004	2001 LSS
2005 to 2009	2005 LSS
2010 to 2015	NA

9 The weights reflect the importance of the major group/division to the total manufacturing industry. The weights change over time due to changes in the relative performance of industries, due to factors such as quality changes, changes in relative prices, and changes in customer preferences. New weights need to be calculated from time to time.

Table E – Weights by division and major group

Manufacturing divisions and major groups	Weights according to national accounts value added		
	2010	2011	2012 – 2015
Food and beverages	22,08	23,82	24,44
Meat, fish, fruit, etc.	4,41	5,19	5,39
Dairy products	2,22	2,30	1,78
Grain mill products	2,71	2,78	2,86
Other food products	6,34	7,12	7,73
Beverages	6,40	6,43	6,68
Textiles, clothing, leather and footwear	3,45	2,92	3,17
Textiles	0,68	0,84	0,74
Other textile products	0,43	0,39	0,47
Knitted, crocheted articles	0,08	0,08	0,10
Wearing apparel	1,55	0,99	1,19
Leather and leather products	0,22	0,19	0,28
Footwear	0,49	0,43	0,39
Wood and wood products, paper, publishing and printing	9,30	9,46	12,65
Sawmilling and planing of wood	0,82	0,82	1,83
Products of wood	1,66	1,76	2,55
Paper and paper products	3,18	3,26	4,89
Publishing	1,45	1,45	1,51
Printing, recorded media	2,19	2,17	1,87
Petroleum, chemical products, rubber and plastic products	25,13	22,52	22,13
Coke, petroleum products and nuclear fuel	7,97	6,32	7,77
Basic chemicals	5,81	4,85	3,81
Other chemical products	7,39	7,06	6,49
Rubber products	1,19	1,18	1,00
Plastic products	2,77	3,11	3,06
Glass and non-metallic mineral products	4,91	4,42	3,91
Glass and glass products	0,80	0,89	0,78
Non-metallic mineral products	4,11	3,53	3,13
Basic iron and steel, non-ferrous metal products, metal products and machinery	20,30	20,40	19,59
Basic iron and steel products	4,42	4,71	3,38
Non-ferrous metal products (including precious metals)	3,44	3,46	3,18
Structural metal products	1,87	2,21	1,89
Other fabricated metal products	3,84	3,89	4,40
General purpose machinery	2,36	2,44	2,44
Special purpose machinery	3,48	3,04	3,44
Household appliances	0,89	0,65	0,86
Electrical machinery	2,44	2,37	1,70
Radio, television and communication apparatus and professional equipment	1,32	1,45	1,41
Radio, television and communication apparatus	0,77	0,88	0,90
Professional equipment	0,55	0,57	0,51
Motor vehicles, parts and accessories and other transport equipment	7,89	8,58	7,39
Motor vehicles	3,21	3,84	2,98
Bodies for motor vehicles, trailers and semi-trailers	0,64	0,53	0,43
Parts and accessories	2,88	3,00	2,77
Other transport equipment	1,16	1,21	1,21
Furniture and other manufacturing	3,18	4,06	3,61
Furniture	0,94	1,05	1,08
Other manufacturing groups	2,24	3,01	2,53
Total	100	100	100

- Seasonal adjustment** 10 Seasonally adjusted estimates of all major groups are generated each month, using the X-12 Seasonal Adjustment Program developed by the US Bureau of the Census, 1968. Seasonal adjustment is a means of removing the estimated effects of normal seasonal variation from the series so that the effects of other influences on the series can be more clearly recognised. Seasonal adjustment does not aim to remove irregular or non-seasonal influences, which may be present in any particular month. Influences that are volatile or unsystematic can still make it difficult to interpret the movement of the series even after adjustment for seasonal variations. Therefore the month-to-month movements of seasonally adjusted estimates may not be reliable indicators of trend behaviour.
- Trend cycle** 11 The trend is the long-term pattern or movement of a time series. The X-12 Seasonal Adjustment Programme is used for smoothing seasonally adjusted estimates to estimates of the underlying trend.
- Reliability of estimates** 12 Data presented in this publication are based on information obtained from a sample and are, therefore, subject to sampling variability; that is, they may differ from the figures that would have been produced if the data had been obtained from all enterprises in the manufacturing industry in South Africa. Estimates are subject to sampling and non-sampling errors.
- 13 Inaccuracies may occur because of imperfections in reporting by enterprises and errors made in the collection and processing of the data. Inaccuracies of this kind are referred to as non-sampling errors. Every effort is made to minimise non-sampling errors by careful design of questionnaires, testing them in pilot studies, editing reported data and implementing efficient operating procedures. Fluctuations may occur in consecutive months as a result of seasonal and economic factors.
- Month-on-month percentage change** 14 The month-on-month percentage change in a variable for any given month is the change between that month and the previous month, expressed as a percentage of the latter.
- Year-on-year (annual) percentage change** 15 The year-on-year percentage change in a variable for any given period is the change between that period and the corresponding period of the previous year, expressed as a percentage of the latter.
- Index contribution (percentage points)** 16 The contribution (percentage points) of a major group or division to the total manufacturing production percentage change for a given period is calculated by multiplying the difference in the index of each major group or division by the weight of the major group or division and then dividing by the previous period total manufacturing index.
- Sales contribution (percentage points)** 17 The contribution (percentage points) of a division or major group to the percentage change in total manufacturing sales for a given period is calculated by multiplying the percentage change of each major group or division with its percentage contribution to the total sales of the previous period, divided by 100.

Glossary

Enterprise	The enterprise is a legal entity or a combination of legal units that includes and directly controls all functions necessary to carry out its production activities.	
Industry	An industry is made up of enterprises engaged in the same or similar kinds of economic activity. Industries are defined in the <i>System of National Accounts (SNA)</i> in the same way as in the <i>1993 Standard Industrial Classification of all Economic Activities</i> , Fifth Edition, Report No. 09-90-02 of January 1993 (SIC).	
Sales	Sales are the total value of sales and transfers-out of all own manufactured products/articles and the amounts received for installation, erection or assembly or other services rendered.	
Symbols and abbreviations	BSF	Business sampling frame
	GDP	Gross domestic product
	IMF	International Monetary Fund
	ISIC	International Standard Industrial Classification
	LSS	Large sample survey
	PPI	Producer price index
	Rm	R million
	SIC	Standard Industrial Classification of all Economic Activities
	SARS	South African Revenue Service
	SDDS	Special Data Dissemination Standard
	Stats SA	Statistics South Africa
	VAT	Value added tax
	*	Revised figures

Technical enquiries

Gerda Bruwer Telephone number: (012) 310 8249
Email: gerdab@statssa.gov.za

General information

Stats SA publishes approximately 300 different statistical releases each year. It is not economically viable to produce them in more than one of South Africa's eleven official languages. Since the releases are used extensively, not only locally but also by international economic and social-scientific communities, Stats SA releases are published in English.

Stats SA has copyright on this publication. Users may apply the information as they wish, provided that they acknowledge Stats SA as the source of the basic data wherever they process, apply, utilise, publish or distribute the data; and also that they specify that the relevant application and analysis (where applicable) result from their own processing of the data.

Advance release calendar

An advance release calendar is disseminated on www.statssa.gov.za

Stats SA products

A complete set of Stats SA publications is available at the Stats SA Library and the following libraries:

National Library of South Africa, Pretoria Division
National Library of South Africa, Cape Town Division
Natal Society Library, Pietermaritzburg
Library of Parliament, Cape Town
Bloemfontein Public Library
Johannesburg Public Library
Eastern Cape Library Services, King William's Town
Central Regional Library, Polokwane
Central Reference Library, Mbombela
Central Reference Collection, Kimberley
Central Reference Library, Mmabatho

Stats SA also provides a subscription service.

Electronic services

A large range of data is available via online services. For more details about our electronic data services, contact Stats SA's user information service at (012) 310 8600.

You can visit us on the Internet at: www.statssa.gov.za

General enquiries

User information services	Telephone number: (012) 310 8600 Email address: info@statssa.gov.za
Orders/subscription services	Telephone number: (012) 310 8358 Email: magdaj@statssa.gov.za
Postal address	Private Bag X44, Pretoria, 0001

Produced by Stats SA