



**stats sa**

Department:  
Statistics South Africa  
**REPUBLIC OF SOUTH AFRICA**

Private Bag X44, Pretoria, 0001, South Africa, ISibalo House, Koch Street, Salvokop, Pretoria, 0002  
www.statssa.gov.za, info@statssa.gov.za, Tel +27 12 310 8911

## **STATISTICAL RELEASE**

### **P2041**

# Mining: Production and sales (Preliminary)

September 2024

This is the first publication with weights based on national accounts value added data for 2019–2021. Previously, the total mining production index was calculated using weights based on national accounts value added data for 2018–2020.

Embargoed until:  
14 November 2024  
11:30

**ENQUIRIES:**  
Juan-Pierre Terblanche  
Tel: 066 470 2112

**FORTHCOMING ISSUE:**  
October 2024

**EXPECTED RELEASE DATE:**  
10 December 2024

Dipalopalo tsa Aforikaborwa • Dipalopalo tsa Aforika Borwa • Ezazibalo zaseNingizimu Afrika • Tshitatistika Afrika Tshipembe • Tinhlayo Afrika-Dzonga

Statistieke Suid-Afrika • Dipalopalo tsa Aforika Borwa • Telubalo zaseNingizimu Afrika • EzeeNkcukacha maNani zoMzantsi Afrika • Iimibalobalo zeSewula Afrika

**IMPROVING LIVES THROUGH DATA ECOSYSTEMS**



## Contents

<b>Production: results for September 2024</b> .....	<b>2</b>
Table A – Key growth rates in the volume of mining production .....	2
Table B – Seasonally adjusted index of the volume of mining production for the latest three months by mineral group and mineral (Base: 2019=100).....	2
Figure 1 – Volume of mining production (Base: 2019=100) .....	3
Figure 2 – Volume of mining production (Base: 2019=100): year-on-year percentage change .....	3
<b>Sales: results for September 2024</b> .....	<b>4</b>
Table C – Key growth rates in mineral sales at current prices .....	4
Figure 3 – Total value of mineral sales at current prices.....	4
<b>Note – Reweighting of mining production</b> .....	<b>5</b>
Table D – Historical weights for the mineral groups and minerals.....	5
Figure 4 – Volume of total mining production based on previous weights and new weights (Base: 2019=100) .....	6
Figure 5 – Comparison of the annual growth rates (% change) for mining production based on the previous weights and new weights.....	6
<b>Tables</b> .....	<b>7</b>
Table 1 – Index of the volume of mining production (Base: 2019=100) .....	7
Table 2 – Year-on-year percentage change in the volume of mining production .....	7
Table 3 – Seasonally adjusted volume of total mining production .....	7
Table 4 – Index of the volume of mining production by mineral group and mineral (Base: 2019=100) .....	8
Table 5 – Seasonally adjusted index of the volume of mining production by mineral group and mineral (Base: 2019=100) .....	8
Table 6 – Year-on-year percentage change in the volume of mining production by mineral group and mineral ....	9
Table 7 – Contribution of each mineral group and mineral to the year-on-year percentage change in the volume of mining production (percentage points) .....	9
Table 8 – Mineral sales at current prices (R million).....	10
Table 9 – Year-on-year percentage change in mineral sales at current prices .....	10
Table 10 – Seasonally adjusted total mineral sales at current prices.....	10
Table 11 – Mineral sales at current prices by mineral group and mineral (R million).....	11
Table 12 – Year-on-year percentage change in mineral sales at current prices by mineral group and mineral .....	11
Table 13 – Contribution of each mineral group and mineral to the year-on-year percentage change in mineral sales at current prices (percentage points).....	11
<b>Explanatory notes</b> .....	<b>12</b>
<b>Technical notes</b> .....	<b>13</b>
<b>Glossary</b> .....	<b>14</b>
<b>Technical enquiries</b> .....	<b>14</b>
<b>General information</b> .....	<b>15</b>

**Production: results for September 2024****Table A – Key growth rates in the volume of mining production**

	Apr-24	May-24	Jun-24	Jul-24	Aug-24	Sep-24
Year-on-year % change, unadjusted	2,9	0,8	-3,4	-1,6	0,3	4,7
Month-on-month % change, seasonally adjusted	2,6	-1,5	-1,4	-1,1	3,3	3,8
3-month % change, seasonally adjusted <sup>1</sup>	1,0	-0,3	-0,4	-2,7	-1,2	1,0

<sup>1</sup> Percentage change between the previous three months and the three months ending in the month indicated.

Mining production increased by 4,7% year-on-year in September 2024. The largest positive contributors were:

- PGMs (6,7% and contributing 2,1 percentage points);
- iron ore (10,0% and contributing 1,3 percentage points);
- manganese ore (13,5% and contributing 0,9 of a percentage point);
- chromium ore (17,3% and contributing 0,8 of a percentage point); and
- diamonds (35,4% and contributing 0,5 of a percentage point).

Coal (-4,4% and contributing -1,0 percentage point) and gold (-3,7% and contributing -0,5 of a percentage point) were the only negative contributors – see Table 6 and Table 7.

Seasonally adjusted mining production increased by 3,8% in September 2024 compared with August 2024. This followed month-on-month changes of 3,3% in August 2024 and -1,1% in July 2024 – see Table A.

**Table B – Seasonally adjusted index of the volume of mining production for the latest three months by mineral group and mineral (Base: 2019=100)**

Mineral group and mineral	Weight	Apr – Jun 2024	Jul – Sep 2024	% change between Apr – Jun 2024 and Jul – Sep 2024	Contribution (% points) to the % change in total mining production
Gold	13,73	87,0	86,1	-1,0	-0,1
Iron ore	15,04	85,4	85,4	0,0	0,0
Chromium ore	3,83	127,3	136,6	7,3	0,4
Copper <sup>1</sup>	0,69	98,1	111,0	13,1	0,1
Manganese ore	5,69	116,4	128,1	10,1	0,7
PGMs	30,16	96,2	95,4	-0,8	-0,3
Nickel <sup>1</sup>	1,06	71,4	83,6	17,1	0,1
Other metallic minerals <sup>1</sup>	2,41	82,8	83,2	0,5	0,0
Diamonds <sup>1</sup>	2,16	80,4	80,4	0,0	0,0
Coal	21,75	88,6	89,1	0,6	0,1
Building materials	2,91	89,1	87,5	-1,8	-0,1
Other non-metallic minerals	0,57	102,2	95,8	-6,3	0,0
<b>Total</b>	<b>100,00</b>	<b>92,9</b>	<b>93,8</b>	<b>1,0</b>	<b>1,0</b>

<sup>1</sup> Unadjusted. See notes 4, 5 and 6 on page 13.

Seasonally adjusted mining production increased by 1,0% in the third quarter of 2024 compared with the second quarter of 2024. The largest positive contributors were:

- manganese ore (10,1% and contributing 0,7 of a percentage point); and
- chromium ore (7,3% and contributing 0,4 of a percentage point).

PGMs (-0,8% and contributing -0,3 of a percentage point) was the largest negative contributor – see Table B.

Figure 1 – Volume of mining production (Base: 2019=100)

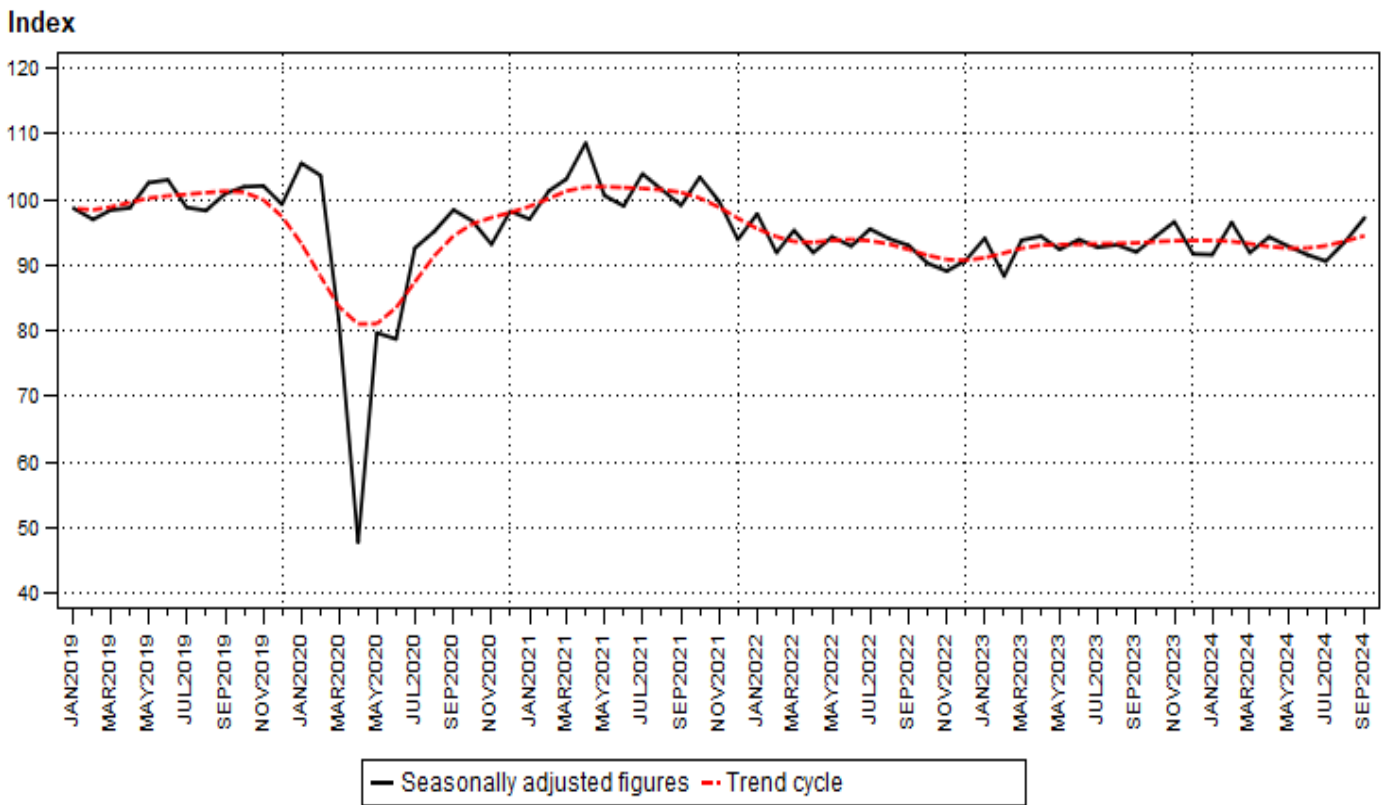
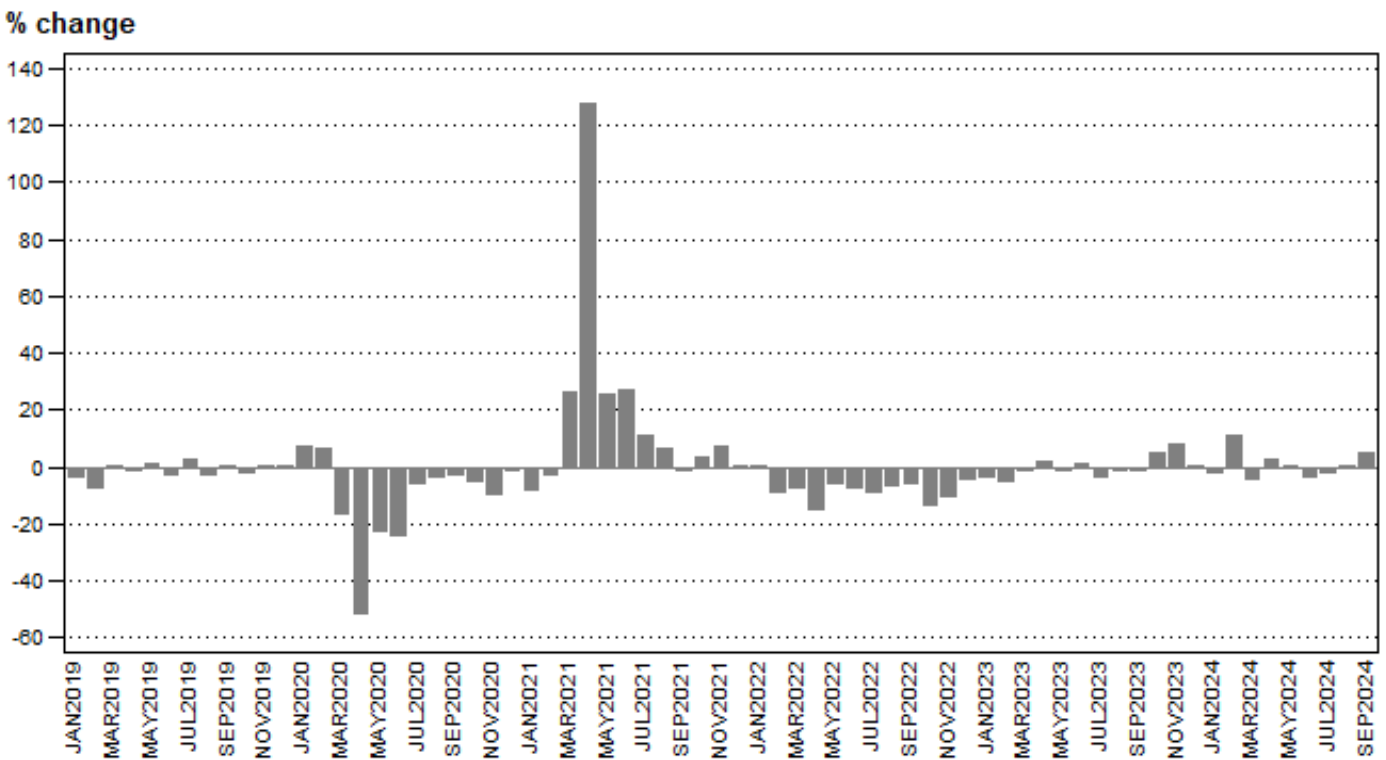


Figure 2 – Volume of mining production (Base: 2019=100): year-on-year percentage change



**Sales: results for September 2024**

**Table C – Key growth rates in mineral sales at current prices**

	Apr-24	May-24	Jun-24	Jul-24	Aug-24	Sep-24
Year-on-year % change, unadjusted	12,6	-18,6	18,1	25,5	-10,7	8,0
Month-on-month % change, seasonally adjusted	16,8	-8,5	21,5	-1,7	-21,4	16,4
3-month % change, seasonally adjusted <sup>1</sup>	-12,2	-12,1	3,6	9,7	10,5	-2,5

<sup>1</sup> Percentage change between the previous three months and the three months ending in the month indicated.

Mineral sales at current prices increased by 8,0% year-on-year in September 2024. The largest positive contributors were:

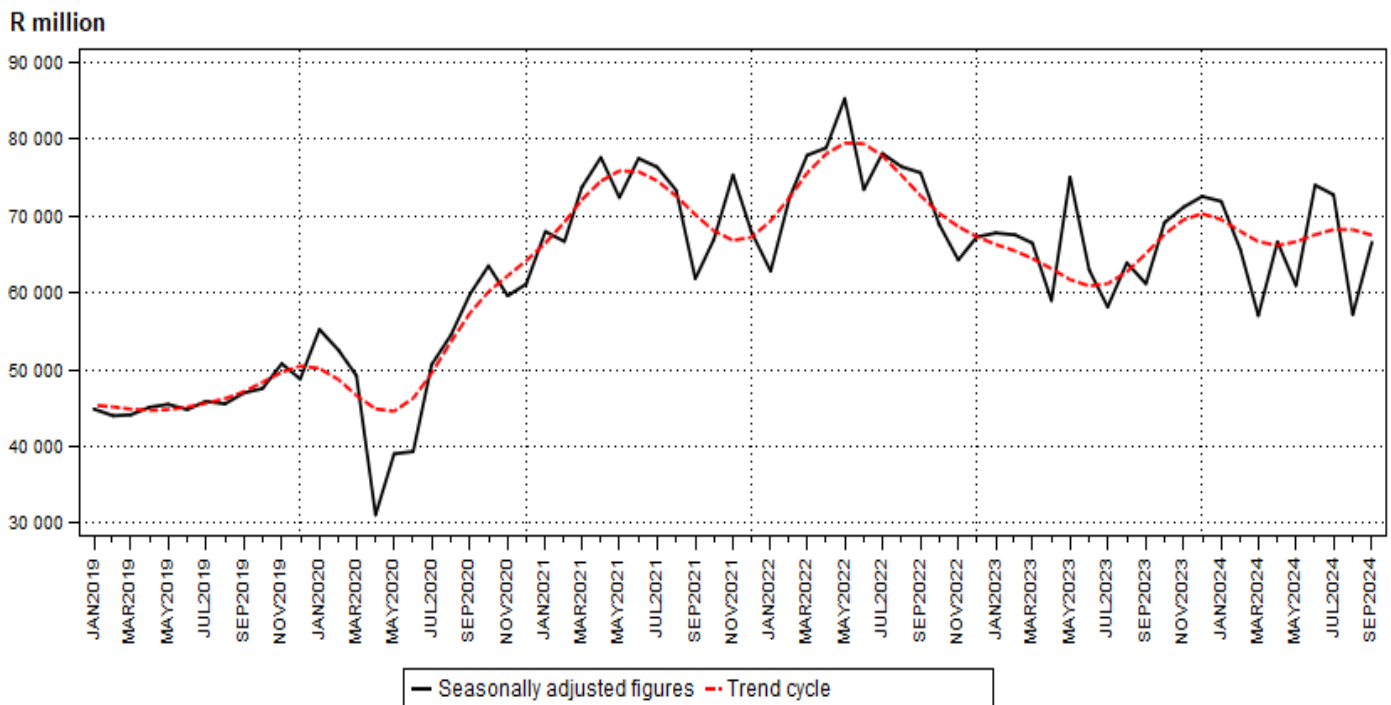
- gold (42,3% and contributing 5,1 percentage points);
- manganese ore (48,8% and contributing 2,7 percentage points);
- chromium ore (19,4% and contributing 1,5 percentage points); and
- coal (5,8% and contributing 1,5 percentage points).

The largest negative contributor was PGMs (-15,9% and contributing -4,3 percentage points) – see Table 12 and Table 13.

Seasonally adjusted mineral sales at current prices increased by 16,4% in September 2024 compared with August 2024. This followed month-on-month changes of -21,4% in August 2024 and -1,7% in July 2024.

Seasonally adjusted mineral sales at current prices decreased by 2,5% in the third quarter of 2024 compared with the second quarter of 2024.

**Figure 3 – Total value of mineral sales at current prices**



*Risenga Maluleke*  
**Risenga Maluleke**  
 Statistician-General

## Note – Reweighting of mining production

### Introduction

Statistics South Africa publishes monthly information regarding the mining industry based on the mining production and mineral sales figures provided by the Department of Mineral Resources and Energy. This statistical release contains detailed information regarding indices of the volume of mining production and the total value of mineral sales according to mineral groups and minerals on a monthly basis. The results of the mining production indices published today contain changes related to reweighting.

### Reweighting

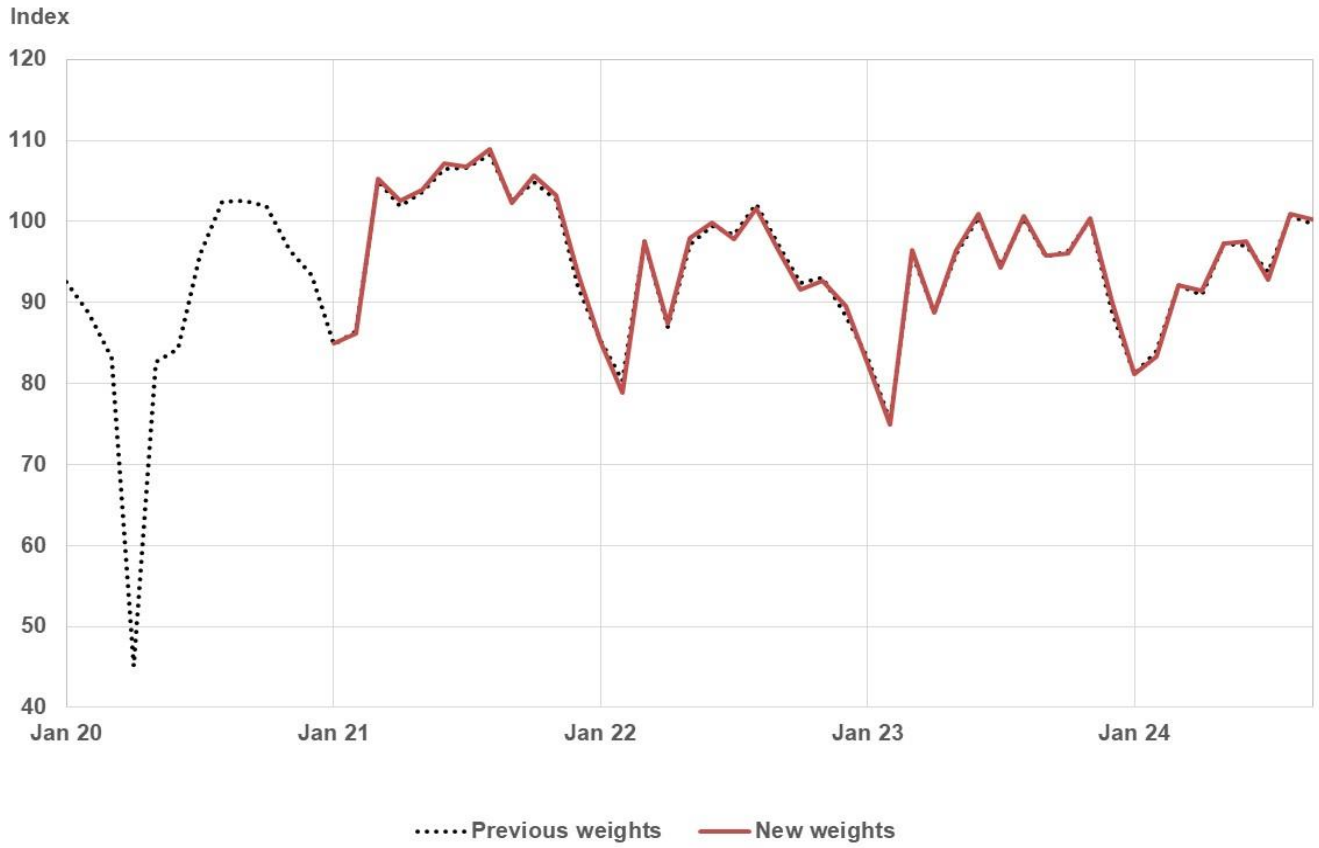
The new weights are based on national accounts value added data for the years 2019 to 2021 and have been applied with effect from January 2021. Previously, the weights were calculated from national accounts value added data for the years 2018 to 2020. The new weights are calculated as a three-year average of value added. The weights for 2020 are the average of value added for 2018, 2019 and 2020, and the weights for 2021 and following years are the average for 2019, 2020 and 2021. Refer to Table D for a comparison between the previous weights and the new weights for the respective mineral groups and minerals and respective periods.

The impact of implementing the new weights on the mining production index is illustrated in Figure 4 and Figure 5.

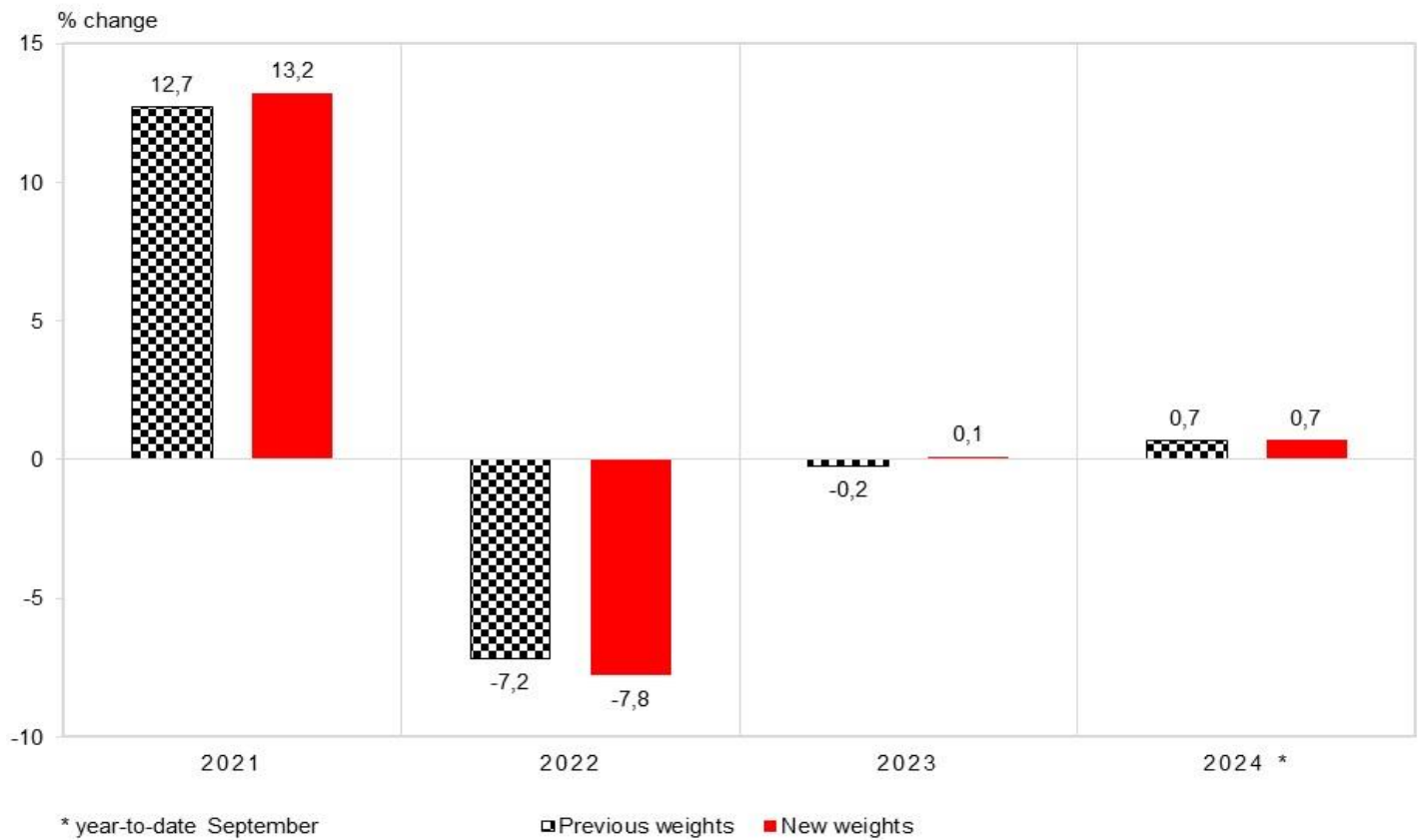
**Table D – Historical weights for the mineral groups and minerals**

Mineral group and mineral	Weights from national accounts value added for the years 2014-2016	Weights from national accounts value added for the years 2015-2017	Weights from national accounts value added for the years 2016-2018	Weights from national accounts value added for the years 2017-2019	Weights from national accounts value added for the years 2018-2020	Weights from national accounts value added for the years 2019-2021
	2016	2017	2018	2019	2020	2021 - present
Gold	19,88	20,10	18,93	15,91	14,57	13,73
Iron ore	13,06	10,58	10,22	11,92	12,99	15,04
Chromium ore	1,99	2,91	3,21	3,62	3,55	3,83
Copper	1,48	1,24	0,94	0,76	0,66	0,69
Manganese ore	3,27	4,30	5,55	6,18	6,29	5,69
PGMs	24,97	24,57	22,68	22,96	26,05	30,16
Nickel	1,62	1,43	1,23	1,15	1,11	1,06
Other metallic minerals	2,13	2,07	2,05	2,35	2,48	2,41
Diamonds	3,69	3,54	3,49	3,20	2,73	2,16
Coal	23,81	25,33	27,56	27,85	25,69	21,75
Building materials	3,44	3,33	3,35	3,32	3,15	2,91
Other non-metallic minerals	0,65	0,62	0,80	0,78	0,73	0,57
<b>Total</b>	<b>100</b>	<b>100</b>	<b>100</b>	<b>100</b>	<b>100</b>	<b>100</b>

**Figure 4 – Volume of total mining production based on previous weights and new weights (Base: 2019=100)**



**Figure 5 – Comparison of the annual growth rates (% change) for mining production based on the previous weights and new weights**



## Tables

**Table 1 – Index of the volume of mining production (Base: 2019=100)**

Month	2018	2019	2020	2021	2022	2023	2024
Jan	89,2	86,3	92,6	84,9	85,2	82,4	81,1
Feb	90,1	83,5	88,8	86,2	78,8	74,9	83,3
Mar	99,2	99,3	83,2	105,3	97,6	96,4	92,2
Apr	93,4	93,1	45,1	102,6	87,4	88,8	91,4
May	104,7	106,3	82,7	103,9	97,9	96,5	97,3
Jun	113,2	110,3	84,3	107,1	99,8	100,9	97,5
Jul	99,2	101,9	95,9	106,8	97,8	94,3	92,8
Aug	108,4	105,6	102,4	108,9	101,6	100,6	100,9
Sep	104,9	105,5	102,5	102,3	96,5	95,8	100,3
Oct	109,2	107,5	101,9	105,7	91,6	96,0	
Nov	105,5	106,0	96,4	103,3	92,7	100,4	
Dec	94,1	94,5	93,4	93,5	89,5	89,9	
<b>Year</b>	<b>100,9</b>	<b>100,0</b>	<b>89,1</b>	<b>100,9</b>	<b>93,0</b>	<b>93,1</b>	

**Table 2 – Year-on-year percentage change in the volume of mining production**

Month	2019	2020	2021	2022	2023	2024	2024 year-to-date
Jan	-3,3	7,3	-8,3	0,4	-3,3	-1,6	-1,6
Feb	-7,3	6,3	-2,9	-8,6	-4,9	11,2	4,5
Mar	0,1	-16,2	26,6	-7,3	-1,2	-4,4	1,1
Apr	-0,3	-51,6	127,5	-14,8	1,6	2,9	1,6
May	1,5	-22,2	25,6	-5,8	-1,4	0,8	1,4
Jun	-2,6	-23,6	27,0	-6,8	1,1	-3,4	0,5
Jul	2,7	-5,9	11,4	-8,4	-3,6	-1,6	0,2
Aug	-2,6	-3,0	6,3	-6,7	-1,0	0,3	0,2
Sep	0,6	-2,8	-0,2	-5,7	-0,7	4,7	0,7
Oct	-1,6	-5,2	3,7	-13,3	4,8		
Nov	0,5	-9,1	7,2	-10,3	8,3		
Dec	0,4	-1,2	0,1	-4,3	0,4		
<b>Year</b>	<b>-0,9</b>	<b>-10,9</b>	<b>13,2</b>	<b>-7,8</b>	<b>0,1</b>		

**Table 3 – Seasonally adjusted volume of total mining production**

Month	Index (Base: 2019=100)				Month-on-month % change			
	2021	2022	2023	2024	2021	2022	2023	2024
Jan	97,0	97,8	94,1	91,6	-1,2	4,2	3,7	-0,1
Feb	101,3	91,9	88,3	96,5	4,4	-6,0	-6,2	5,3
Mar	103,1	95,3	93,8	91,9	1,8	3,7	6,2	-4,8
Apr	108,6	91,9	94,4	94,3	5,3	-3,6	0,6	2,6
May	100,6	94,3	92,4	92,9	-7,4	2,6	-2,1	-1,5
Jun	99,0	92,9	93,9	91,6	-1,6	-1,5	1,6	-1,4
Jul	103,9	95,5	92,7	90,6	4,9	2,8	-1,3	-1,1
Aug	101,5	94,0	93,1	93,6	-2,3	-1,6	0,4	3,3
Sep	99,1	93,0	92,0	97,2	-2,4	-1,1	-1,2	3,8
Oct	103,4	90,3	94,3		4,3	-2,9	2,5	
Nov	99,7	89,1	96,6		-3,6	-1,3	2,4	
Dec	93,9	90,7	91,7		-5,8	1,8	-5,1	



**Table 4 – Index of the volume of mining production by mineral group and mineral (Base: 2019=100) <sup>1</sup>**

Mineral group and mineral	Weight	Apr-24	May-24	Jun-24	Jul-24	Aug-24	Sep-24
Gold	13,73	84,7	86,7	85,0	91,2	92,4	90,9
Iron ore	15,04	81,3	90,3	93,6	85,5	90,7	89,9
Chromium ore	3,83	125,4	133,6	131,7	141,2	152,6	141,7
Copper	0,69	100,4	83,3	110,6	85,6	124,0	123,4
Manganese ore	5,69	103,9	134,1	133,0	140,5	137,0	123,9
PGMs	30,16	100,0	98,7	103,5	82,4	104,7	106,8
Nickel	1,06	70,9	72,4	70,8	67,7	89,4	93,7
Other metallic minerals	2,41	79,9	83,6	84,8	69,9	82,9	96,9
Diamonds	2,16	81,2	86,2	73,7	86,6	66,7	87,9
Coal	21,75	84,7	94,1	90,5	96,5	94,9	93,3
Building materials	2,91	88,9	100,4	88,0	96,0	97,6	90,0
Other non-metallic minerals	0,57	96,3	114,2	98,5	96,5	113,9	101,9
<b>Total</b>	<b>100,00</b>	<b>91,4</b>	<b>97,3</b>	<b>97,5</b>	<b>92,8</b>	<b>100,9</b>	<b>100,3</b>

<sup>1</sup> Annual averages and annual percentage changes are available on the following link: [Annual data](#).

**Table 5 – Seasonally adjusted index of the volume of mining production by mineral group and mineral (Base: 2019=100)**

Mineral group and mineral	Apr-24	May-24	Jun-24	Jul-24	Aug-24	Sep-24	Month-on-month % change
Gold	91,2	86,9	82,9	87,6	85,3	85,3	0,0
Iron ore	84,5	88,4	83,4	81,4	81,5	93,3	14,5
Chromium ore	126,8	128,3	126,7	133,3	139,2	137,4	-1,3
Copper <sup>1</sup>	100,4	83,3	110,6	85,6	124,0	123,4	-0,5
Manganese ore	104,3	123,5	121,5	130,3	125,7	128,3	2,1
PGMs	102,8	91,7	94,2	88,7	97,5	100,0	2,6
Nickel <sup>1</sup>	70,9	72,4	70,8	67,7	89,4	93,7	4,8
Other metallic minerals <sup>1</sup>	79,9	83,6	84,8	69,9	82,9	96,9	16,9
Diamonds <sup>1</sup>	81,2	86,2	73,7	86,6	66,7	87,9	31,8
Coal	87,0	90,2	88,5	88,0	89,1	90,2	1,2
Building materials	90,2	89,2	88,0	88,0	88,2	86,3	-2,2
Other non-metallic minerals	104,4	104,6	97,6	92,4	96,5	98,6	2,2
<b>Total</b>	<b>94,3</b>	<b>92,9</b>	<b>91,6</b>	<b>90,6</b>	<b>93,6</b>	<b>97,2</b>	<b>3,8</b>

<sup>1</sup> Unadjusted. See notes 4, 5 and 6 on page 13.

**Table 6 – Year-on-year percentage change in the volume of mining production by mineral group and mineral**

Mineral group and mineral	Apr-24	May-24	Jun-24	Jul-24	Aug-24	Sep-24
Gold	-1,6	-8,9	-12,6	-3,5	-4,6	-3,7
Iron ore	-7,4	2,3	3,5	-19,1	-15,1	10,0
Chromium ore	20,9	20,7	13,3	23,9	24,8	17,3
Copper	-1,7	-12,1	35,2	-17,0	8,5	15,9
Manganese ore	-7,2	12,6	5,2	27,0	15,6	13,5
PGMs	16,7	-4,3	-5,8	-0,8	4,7	6,7
Nickel	-3,5	-3,6	-4,2	12,6	26,6	21,8
Other metallic minerals	-27,1	-23,4	-25,1	-41,3	-17,8	6,1
Diamonds	6,6	10,9	-8,4	-0,5	-7,2	35,4
Coal	-1,9	8,0	-2,6	2,4	0,4	-4,4
Building materials	1,7	2,9	-3,5	9,0	-1,6	1,7
Other non-metallic minerals	16,7	22,0	9,2	-4,8	-2,5	5,9
<b>Total</b>	<b>2,9</b>	<b>0,8</b>	<b>-3,4</b>	<b>-1,6</b>	<b>0,3</b>	<b>4,7</b>

**Table 7 – Contribution of each mineral group and mineral to the year-on-year percentage change in the volume of mining production (percentage points)**

Mineral group and mineral	Apr-24	May-24	Jun-24	Jul-24	Aug-24	Sep-24
Gold	-0,2	-1,2	-1,7	-0,5	-0,6	-0,5
Iron ore	-1,1	0,3	0,5	-3,2	-2,4	1,3
Chromium ore	0,9	0,9	0,6	1,1	1,1	0,8
Copper	0,0	-0,1	0,2	-0,1	0,1	0,1
Manganese ore	-0,5	0,9	0,4	1,8	1,0	0,9
PGMs	4,9	-1,4	-1,9	-0,2	1,4	2,1
Nickel	0,0	0,0	0,0	0,1	0,2	0,2
Other metallic minerals	-0,8	-0,6	-0,7	-1,3	-0,4	0,1
Diamonds	0,1	0,2	-0,1	0,0	-0,1	0,5
Coal	-0,4	1,6	-0,5	0,5	0,1	-1,0
Building materials	0,0	0,1	-0,1	0,2	0,0	0,1
Other non-metallic minerals	0,1	0,1	0,0	0,0	0,0	0,0
<b>Total</b>	<b>2,9</b>	<b>0,8</b>	<b>-3,4</b>	<b>-1,6</b>	<b>0,3</b>	<b>4,7</b>

**Table 8 – Mineral sales at current prices (R million)**

Month	2018	2019	2020	2021	2022	2023	2024
Jan	34 420,4	41 070,7	51 128,5	63 518,6	59 050,2	63 607,1	67 329,4
Feb	34 892,7	38 202,9	45 135,2	56 927,3	61 698,4	57 552,8	56 116,5
Mar	39 778,5	45 585,3	51 606,4	78 213,1	83 573,6	71 640,8	61 501,1
Apr	37 039,5	44 538,7	31 064,5	78 533,6	80 279,4	60 060,2	67 615,3
May	41 684,6	46 519,8	40 521,7	75 976,9	89 818,5	79 430,6	64 671,8
Jun	45 024,3	48 295,2	41 962,5	82 049,6	77 693,5	66 558,3	78 591,6
Jul	37 118,1	43 596,0	48 588,4	73 935,4	76 368,5	57 284,3	71 866,9
Aug	43 022,2	47 069,2	56 868,0	77 095,1	80 551,6	67 404,8	60 215,2
Sep	43 017,4	50 009,3	63 394,0	65 086,8	78 856,7	63 303,7	68 344,8
Oct	45 802,3	50 051,2	66 165,3	69 099,3	70 397,8	70 056,7	
Nov	46 680,3	50 450,7	58 255,9	72 147,3	60 931,6	67 130,5	
Dec	50 020,5	47 491,9	58 501,2	64 696,9	64 521,0	70 207,2	
<b>Total</b>	<b>498 500,8</b>	<b>552 880,9</b>	<b>613 191,6</b>	<b>857 279,9</b>	<b>883 740,8</b>	<b>794 237,0</b>	

**Table 9 – Year-on-year percentage change in mineral sales at current prices**

Month	2019	2020	2021	2022	2023	2024	2024 year-to-date
Jan	19,3	24,5	24,2	-7,0	7,7	5,9	5,9
Feb	9,5	18,1	26,1	8,4	-6,7	-2,5	1,9
Mar	14,6	13,2	51,6	6,9	-14,3	-14,2	-4,1
Apr	20,2	-30,3	152,8	2,2	-25,2	12,6	-0,1
May	11,6	-12,9	87,5	18,2	-11,6	-18,6	-4,5
Jun	7,3	-13,1	95,5	-5,3	-14,3	18,1	-0,8
Jul	17,5	11,5	52,2	3,3	-25,0	25,5	2,5
Aug	9,4	20,8	35,6	4,5	-16,3	-10,7	0,8
Sep	16,3	26,8	2,7	21,2	-19,7	8,0	1,6
Oct	9,3	32,2	4,4	1,9	-0,5		
Nov	8,1	15,5	23,8	-15,5	10,2		
Dec	-5,1	23,2	10,6	-0,3	8,8		
<b>Total</b>	<b>10,9</b>	<b>10,9</b>	<b>39,8</b>	<b>3,1</b>	<b>-10,1</b>		

**Table 10 – Seasonally adjusted total mineral sales at current prices**

Month	R million				Month-on-month % change			
	2021	2022	2023	2024	2021	2022	2023	2024
Jan	67 984,6	62 828,0	67 796,6	71 917,2	11,2	-7,5	0,8	-0,9
Feb	66 690,5	72 483,8	67 547,7	65 609,3	-1,9	15,4	-0,4	-8,8
Mar	73 728,4	77 911,8	66 484,2	57 039,2	10,6	7,5	-1,6	-13,1
Apr	77 641,5	78 883,8	58 979,8	66 649,0	5,3	1,2	-11,3	16,8
May	72 399,7	85 311,4	75 079,6	60 951,4	-6,8	8,1	27,3	-8,5
Jun	77 506,7	73 454,3	62 987,1	74 034,9	7,1	-13,9	-16,1	21,5
Jul	76 389,1	78 155,8	58 165,9	72 762,4	-1,4	6,4	-7,7	-1,7
Aug	73 358,7	76 422,7	63 901,3	57 174,3	-4,0	-2,2	9,9	-21,4
Sep	61 844,3	75 637,1	61 190,9	66 563,0	-15,7	-1,0	-4,2	16,4
Oct	66 953,5	68 922,3	69 152,5		8,3	-8,9	13,0	
Nov	75 357,7	64 282,6	71 165,6		12,6	-6,7	2,9	
Dec	67 911,4	67 280,2	72 552,7		-9,9	4,7	1,9	

**Table 11 – Mineral sales at current prices by mineral group and mineral (R million)**

Mineral group and mineral	Apr-24	May-24	Jun-24	Jul-24	Aug-24	Sep-24
Gold	11 010,3	4 865,3	19 847,9	20 492,5	2 268,3	10 862,7
Iron ore	9 251,5	8 121,8	6 921,8	5 553,0	8 789,5	7 144,0
Chromium ore	5 537,6	5 704,5	5 977,2	5 603,0	5 620,5	5 732,2
Copper	513,2	531,0	830,3	457,4	559,9	900,1
Manganese ore	3 340,1	4 407,2	6 289,1	5 706,9	6 239,5	5 308,8
PGMs	15 837,1	17 086,3	14 868,2	13 633,6	12 833,4	14 378,0
Nickel	907,8	658,7	1 234,3	667,2	869,1	753,9
Other metallic minerals	2 179,7	1 943,1	1 832,7	1 449,8	1 857,0	1 856,1
Coal	15 600,5	17 414,8	17 288,8	15 411,7	17 766,9	17 366,5
Building materials	1 117,5	1 234,0	1 107,6	1 240,8	1 264,4	1 185,5
Other non-metallic minerals	2 320,1	2 705,1	2 393,7	1 650,9	2 146,8	2 856,9
<b>Total</b>	<b>67 615,3</b>	<b>64 671,8</b>	<b>78 591,6</b>	<b>71 866,9</b>	<b>60 215,2</b>	<b>68 344,8</b>

**Table 12 – Year-on-year percentage change in mineral sales at current prices by mineral group and mineral**

Mineral group and mineral	Apr-24	May-24	Jun-24	Jul-24	Aug-24	Sep-24
Gold	226,5	-69,2	97,8	117,5	-80,5	42,3
Iron ore	9,1	-0,4	-9,8	-31,4	5,9	1,5
Chromium ore	17,0	28,3	18,4	15,5	11,8	19,4
Copper	6,6	-15,6	67,4	-10,1	-8,8	37,0
Manganese ore	-3,4	-9,8	42,4	70,8	67,5	48,8
PGMs	-7,3	-22,9	-8,4	16,3	-5,4	-15,9
Nickel	-0,6	-34,4	27,0	-22,6	4,1	-26,1
Other metallic minerals	7,2	-14,5	-11,8	-22,8	5,8	11,7
Coal	-7,4	11,8	7,4	14,2	6,6	5,8
Building materials	2,7	2,5	-2,1	13,2	3,6	9,7
Other non-metallic minerals	46,8	-18,2	0,2	-18,1	-46,9	22,7
<b>Total</b>	<b>12,6</b>	<b>-18,6</b>	<b>18,1</b>	<b>25,5</b>	<b>-10,7</b>	<b>8,0</b>

**Table 13 – Contribution of each mineral group and mineral to the year-on-year percentage change in mineral sales at current prices (percentage points)**

Mineral group and mineral	Apr-24	May-24	Jun-24	Jul-24	Aug-24	Sep-24
Gold	12,7	-13,7	14,7	19,3	-13,9	5,1
Iron ore	1,3	0,0	-1,1	-4,4	0,7	0,2
Chromium ore	1,3	1,6	1,4	1,3	0,9	1,5
Copper	0,1	-0,1	0,5	-0,1	-0,1	0,4
Manganese ore	-0,2	-0,6	2,8	4,1	3,7	2,7
PGMs	-2,1	-6,4	-2,0	3,3	-1,1	-4,3
Nickel	0,0	-0,4	0,4	-0,3	0,1	-0,4
Other metallic minerals	0,2	-0,4	-0,4	-0,7	0,2	0,3
Coal	-2,1	2,3	1,8	3,3	1,6	1,5
Building materials	0,0	0,0	0,0	0,3	0,1	0,2
Other non-metallic minerals	1,2	-0,8	0,0	-0,6	-2,8	0,8
<b>Total</b>	<b>12,6</b>	<b>-18,6</b>	<b>18,1</b>	<b>25,5</b>	<b>-10,7</b>	<b>8,0</b>

## Explanatory notes

- Introduction**
- 1 Statistics South Africa (Stats SA) publishes monthly mining production indices and mineral sales based on the information furnished by the Department of Mineral Resources and Energy (DMRE). Data in this release are presented by mineral group and mineral.
  - 2 In accordance with international practice, the indices are usually re-based every five years to a new base year. The current base year of the index of the volume of mining production is 2019=100. Both actual and seasonally adjusted figures are presented.
  - 3 The value of mineral sales is calculated, in general, on a free-on-rail/free-on-board basis.
- Purpose of the survey**
- 4 The monthly mining production and sales survey is conducted by the DMRE, covering all mining establishments operating in the South African economy. The results of this survey are used to calculate the volume of mining production indices in order to estimate the gross domestic product (GDP) and its components, which in turn are used to develop and monitor government policy.
- Scope of the survey**
- 5 This survey covers mining establishments conducting activities regarding the extracting, dressing and beneficiating of minerals occurring naturally, for example solids such as coal and ores.
- Classification**
- 6 The 1993 edition of the *Standard Industrial Classification of All Economic Activities* (SIC), Fifth Edition, Report No. 09-90-02, Fifth Edition of January 1993, was used to classify the statistical units in the survey. The SIC is based on the 1990 *International Standard Industrial Classification of All Economic Activities* (ISIC) with suitable adaptations for local conditions. Each statistical unit is classified to an industry which reflects the predominant activity of the establishment. Statistics in this publication are presented by mineral group and mineral.
- Statistical unit**
- 7 The statistical unit for the collection of information is the mining establishment. An establishment is the smallest economic unit that functions as a separate entity.
- Revised figures**
- 8 Revised figures are mainly due to late submission of data to the DMRE, or the DMRE reporting revisions or corrections to their figures. The reasons for routine revisions are outlined in the following schedule. Any unscheduled revisions will be promptly indicated in relevant tables to maintain transparency and accuracy. It is important to note that seasonally adjusted figures are revised monthly.

Statistical release	Reason for revision	Period subject to revision
Sep-24	Additional information from the DMRE New weights for mining production	Jan-21 - Aug-24
Oct-24	Additional information from the DMRE	Jan-22 - Sep-24
Nov-24	Additional information from the DMRE	Jan-22 - Oct-24
Dec-24	Additional information from the DMRE	Jan-22 - Nov-24
Jan-25	Additional information from the DMRE	Jan-22 - Dec-24
Feb-25	Additional information from the DMRE	Jan-23 - Jan-25
Mar-25	Additional information from the DMRE	Jan-23 - Feb-25
Apr-25	Additional information from the DMRE	Jan-23 - Mar-25
May-25	Additional information from the DMRE	Jan-23 - Apr-25
Jun-25	Additional information from the DMRE	Jan-23 - May-25
Jul-25	Additional information from the DMRE	Jan-23 - Jun-25
Aug-25	Additional information from the DMRE	Jan-23 - Jul-25
New base year in 2027/28 - periodic, approximately four- to five-year intervals		

- Rounding-off of figures**
- 9 The figures in the tables have, where necessary, been rounded off to the nearest digit shown. There may, therefore, be slight discrepancies between the sums of the constituent items and the totals shown.

<b>Historical data and past publications</b>	<b>10</b>	Historical mining data and past publications are available on the Stats SA website. Click on the following link ( <a href="#">Time series data</a> ) or ( <a href="#">Past publications</a> ) to access the data and releases electronically. Annual averages and annual percentage changes are available on the following link: <a href="#">Annual data</a> .
<b>Technical notes</b>		
<b>Index of the volume of mining production</b>	<b>1</b>	The index of the volume of mining production, also known as the production index, is a statistical measure of the change in the volume of production. The production index of a mineral group is the ratio between the volume of production of a mineral group in a given period and the volume of production of the same mineral group in the base period. The current base period is 2019. The production in the base period is set at 100.
<b>Index weighting</b>	<b>2</b>	The weight of a mineral group is the ratio of its value added to the total value added of the mining industry. The weight of a mineral group reflects the importance of the mineral group in the total mining industry. The weights change over time due to quality improvements and changes in relative prices. New weights will be calculated annually.
	<b>3</b>	The weights, which are used to aggregate minerals to mineral groups and mineral groups to total mining, are derived from national accounts value added data. The latest weights (implemented in the September 2024 publication) are based on an average of value added data for the years 2019, 2020 and 2021. These weights are applicable from January 2021.
<b>Seasonal adjustment</b>	<b>4</b>	Seasonally adjusted estimates are generated each month using the X-12-ARIMA Seasonal Adjustment Program developed by the United States Census Bureau. Seasonal adjustment is a means of removing the estimated effects of normal seasonal variation from the series so that the effects of other influences on the series can be recognised more clearly. Seasonal adjustment does not aim to remove irregular or non-seasonal influences which may be present in any particular month.
	<b>5</b>	Influences that are volatile or unsystematic can still make it difficult to interpret the movement of the series even after adjustment for seasonal variations. This means the month-to-month movements of seasonally adjusted estimates may not be reliable indicators of trend behaviour. The X-12-ARIMA procedure for mining production and sales is described in more detail on the Stats SA website at: <a href="#">Click to download seasonal adjustment for mining production and sales February 2022</a> .
<b>Calendar effects</b>	<b>6</b>	These are effects due to calendar variations. Such calendar effects include the number of working/trading days in a week, moving holidays such as Easter and the length of month (some months have more days than others).
<b>Trend cycle</b>	<b>7</b>	The trend is the long-term pattern or movement of a time series. The X-12-ARIMA Seasonal Adjustment Program is used for smoothing seasonally adjusted estimates to estimate the underlying trend cycle.
<b>Month-on-month percentage change</b>	<b>8</b>	The month-on-month percentage change in a variable for any given month is the change between that month and the previous month, expressed as a percentage of the latter.
<b>Year-on-year percentage change</b>	<b>9</b>	The year-on-year percentage change in a variable for any given period is the change between that period and the corresponding period of the previous year, expressed as a percentage of the latter.
<b>Index contribution (percentage points)</b>	<b>10</b>	The contribution (percentage points) of a mineral group or mineral to the percentage change in the total mining production for a given period is calculated by multiplying the difference in the index for each mineral group or mineral by the weight of the mineral group or mineral and then dividing by the previous period's total index.

- Sales contribution (percentage points)** 11 The contribution (percentage points) to the percentage change in total sales for a given period is calculated by multiplying the percentage change of each mineral group or mineral with its percentage contribution to total mineral sales of the previous period, divided by 100.

## Glossary

<b>Free-on-rail</b>	Free-on-rail relates to goods sold on the local market where no rail or road transport costs are involved.																
<b>Free-on-board</b>	Free-on-board relates to goods destined for the export market. Rail, road transport and docking charges are involved but no charges are made for transport by sea.																
<b>Industry</b>	An industry consists of a group of establishments engaged in the same or similar kinds of economic activity. Industries are defined in the <i>System of National Accounts</i> (SNA) in the same way as in the <i>Standard Industrial Classification of All Economic Activities</i> (SIC), Fifth Edition of January 1993.																
<b>PGMs – Platinum group metals</b>	Platinum group metals include platinum, iridium, osmium, palladium, rhodium, ruthenium and osmium.																
<b>Sales</b>	Sales are the total value of sales of primary minerals at the first point of saleability by the mining establishment.																
<b>Symbols and abbreviations</b>	<table> <tr> <td>DMRE</td> <td>Department of Mineral Resources and Energy</td> </tr> <tr> <td>GDP</td> <td>Gross domestic product</td> </tr> <tr> <td>ISIC</td> <td>International Standard Industrial Classification</td> </tr> <tr> <td>PGMs</td> <td>Platinum group metals</td> </tr> <tr> <td>SIC</td> <td>Standard Industrial Classification of All Economic Activities</td> </tr> <tr> <td>SNA</td> <td>System of National Accounts</td> </tr> <tr> <td>Stats SA</td> <td>Statistics South Africa</td> </tr> <tr> <td>*</td> <td>Revised</td> </tr> </table>	DMRE	Department of Mineral Resources and Energy	GDP	Gross domestic product	ISIC	International Standard Industrial Classification	PGMs	Platinum group metals	SIC	Standard Industrial Classification of All Economic Activities	SNA	System of National Accounts	Stats SA	Statistics South Africa	*	Revised
DMRE	Department of Mineral Resources and Energy																
GDP	Gross domestic product																
ISIC	International Standard Industrial Classification																
PGMs	Platinum group metals																
SIC	Standard Industrial Classification of All Economic Activities																
SNA	System of National Accounts																
Stats SA	Statistics South Africa																
*	Revised																

## Technical enquiries

<b>JP Terblanche</b>	Telephone number: (012) 310 2965 / 066 470 2112 Email: <a href="mailto:juan-pierret@statssa.gov.za">juan-pierret@statssa.gov.za</a>
<b>Mpuleng Galane</b>	Telephone number: (012) 444 3735 Email: <a href="mailto:mpuleng.galane@dmre.gov.za">mpuleng.galane@dmre.gov.za</a>

## General information

Stats SA publishes approximately 300 different statistical releases each year. It is not economically viable to produce them in more than one of South Africa's 12 official languages. Since the releases are used extensively locally and by international economic and social-scientific communities, Stats SA releases are published in English only.

Stats SA has copyright on this publication. Users may apply the information as they wish, provided that they acknowledge Stats SA as the source of the basic data wherever they process, apply, utilise, publish or distribute the data and also that they specify that the relevant application and analysis (where applicable) result from their own processing of the data.

## Advance release calendar

An advance release calendar is disseminated on [www.statssa.gov.za](http://www.statssa.gov.za).

## Stats SA products

A complete set of Stats SA publications is available at the Stats SA Library and the following libraries:

National Library of South Africa, Pretoria Division  
National Library of South Africa, Cape Town Division  
Natal Society Library, Pietermaritzburg  
Library of Parliament, Cape Town  
Bloemfontein Public Library  
Johannesburg Public Library  
Eastern Cape Library Services, Qonce  
Central Regional Library, Polokwane  
Central Reference Library, Mbombela  
Central Reference Collection, Kimberley  
Central Reference Library, Mmabatho

Stats SA also provides a subscription service.

## Electronic services

A large range of data is available via online services. For more details about our electronic services, contact Stats SA's user information service.

You can visit us on the internet at: [www.statssa.gov.za](http://www.statssa.gov.za).

## General enquiries

User information services	Telephone number: (012) 310 8600 Email: <a href="mailto:info@statssa.gov.za">info@statssa.gov.za</a>
Orders/subscription services	Telephone number: (012) 310 8619 Email: <a href="mailto:millies@statssa.gov.za">millies@statssa.gov.za</a>
Postal address	Private Bag X44, Pretoria, 0001

*Produced by Stats SA*