

STATISTICAL RELEASE
P2041

Mining production and sales
(Preliminary)

September 2016

Embargoed until:
10 November 2016
11:30

ENQUIRIES:
Juan-Pierre Terblanche
012 310 2965

FORTHCOMING ISSUE:
October 2016

EXPECTED RELEASE DATE:
8 December 2016

www.statssa.gov.za
info@statssa.gov.za
T +27 12 310 8911
F +27 12 310 8500

Private Bag X44, Pretoria, 0001, South Africa
ISlballo House, Koch Street, Salvokop, Pretoria, 0002



Contents

Production: results for September 2016	2
Table A – Key growth rates in the volume of mining production	2
Table B – Seasonally adjusted index of the volume of mining production for the latest three months by mineral group and mineral (Base: 2010=100).....	2
Figure 1 – Volume of mining production (Base: 2010=100).....	3
Figure 2 – Volume of mining production (Base: 2010=100): year-on-year percentage change	3
Sales: results for August 2016	4
Table C – Key growth rates in mineral sales at current prices	4
Tables	5
Table 1 – Index of the volume of mining production (Base: 2010=100).....	5
Table 2 – Year-on-year percentage change in the volume of mining production.....	5
Table 3 – Seasonally adjusted volume of total mining production	5
Table 4 – Index of the volume of mining production by mineral group and mineral (Base: 2010=100).....	6
Table 5 – Seasonally adjusted index of the volume of mining production by mineral group and mineral (Base: 2010=100)	6
Table 6 – Year-on-year percentage change in the volume of mining production by mineral group and mineral.....	7
Table 7 – Contribution of each mineral group and mineral to the year-on-year percentage change in the volume of mining production (percentage points)	7
Table 8 – Mineral sales at current prices (R million).....	8
Table 9 – Year-on-year percentage change in mineral sales at current prices.....	8
Table 10 – Seasonally adjusted total mineral sales at current prices	8
Table 11 – Mineral sales at current prices by mineral group and mineral (R million).....	9
Table 12 – Year-on-year percentage change in mineral sales at current prices by mineral group and mineral.....	9
Table 13 – Contribution of each mineral group and mineral to the year-on-year percentage change in mineral sales at current prices (percentage points).....	9
Survey information	10
Technical notes	11
Glossary	12
Technical enquiries	12
General information	13

Production: results for September 2016

Table A – Key growth rates in the volume of mining production

	Apr-16	May-16	Jun-16	Jul-16	Aug-16	Sep-16
Year-on-year % change, unadjusted	-7,8	-3,7	-2,7	-5,4	0,1	3,4
Month-on-month % change, seasonally adjusted	2,6	3,1	1,6	-2,4	2,3	0,9
3-month % change, seasonally adjusted 1/	-3,0	0,4	4,8	4,8	3,7	1,5

1/ Percentage change between the previous three months and the three months ending in the month indicated.

Mining production increased by 3,4% year-on-year in September 2016. The main positive contributors were:

- PGMs (10,5% and contributing 2,1 percentage points);
- iron ore (11,7% and contributing 2,0 percentage points); and
- coal (6,8% and contributing 1,6 percentage points) – see Tables 6 and 7.

Seasonally adjusted mining production increased by 0,9% in September 2016 compared with August 2016. This followed month-on-month changes of 2,3% in August 2016 and -2,4% in July 2016.

Table B – Seasonally adjusted index of the volume of mining production for the latest three months by mineral group and mineral (Base: 2010=100)

Mineral group and mineral	Weight	Apr – Jun 2016	Jul – Sep 2016	% change between Apr – Jun 2016 and Jul – Sep 2016	Contribution (% points) to the % change in total mining production
Gold	16,25	76,5	74,3	-2,9	-0,4
Iron ore	14,86	105,8	127,5	20,5	3,3
Chromium ore	2,63	128,5	138,6	7,9	0,3
Copper ¹	1,27	59,9	89,3	49,1	0,4
Manganese ore ¹	3,09	187,7	190,8	1,7	0,1
PGMs	21,82	105,7	95,5	-9,6	-2,3
Nickel ¹	1,88	123,8	118,2	-4,5	-0,1
Other metallic minerals ¹	2,88	80,1	79,4	-0,9	0,0
Diamonds ¹	3,59	77,9	93,7	20,3	0,6
Coal	25,04	97,9	97,3	-0,6	-0,2
Building materials	1,65	115,2	114,4	-0,7	0,0
Other non-metallic minerals	5,04	67,9	64,4	-5,2	-0,2
Total	100,00	98,4	99,9	1,5	1,5

¹ Not seasonally adjusted, because the presence of seasonality is not significant. See notes 4 and 5 on page 11.

Seasonally adjusted mining production increased by 1,5% in the third quarter of 2016 compared with the second quarter of 2016. Iron ore (contributing 3,3 percentage points) was the largest positive contributor – see Table B.

Figure 1 – Volume of mining production (Base: 2010=100)

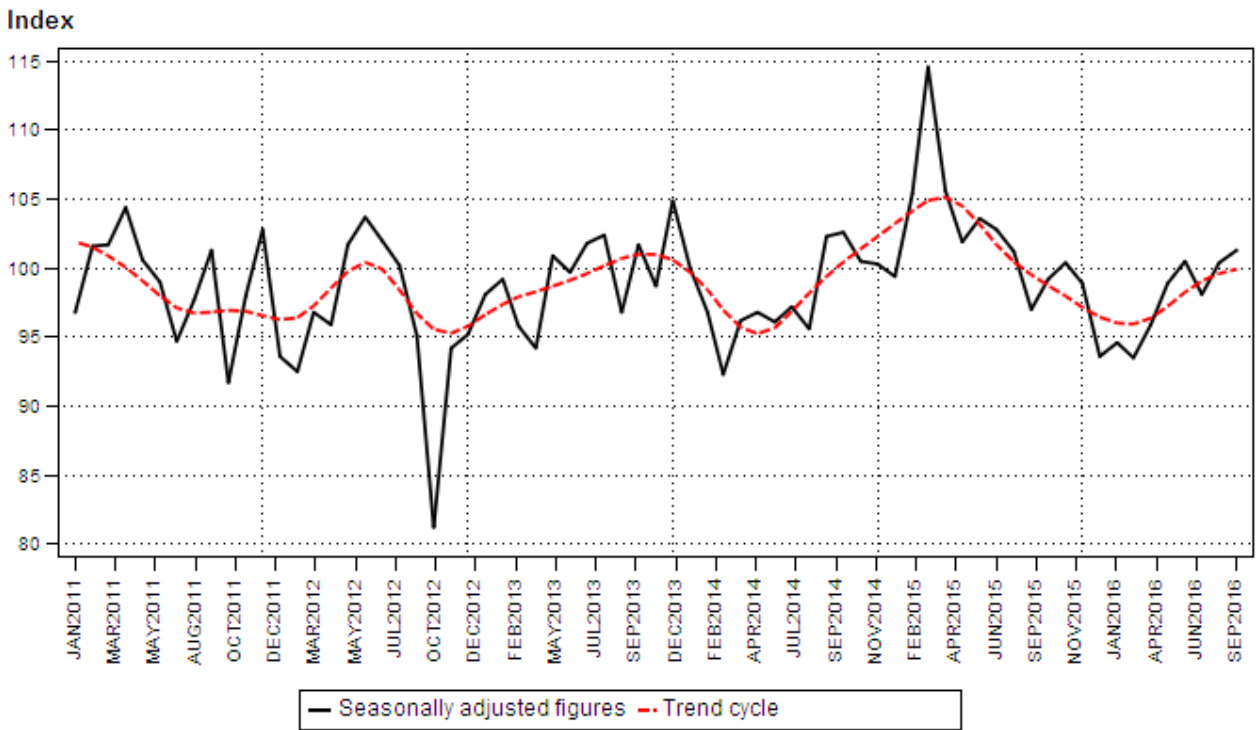
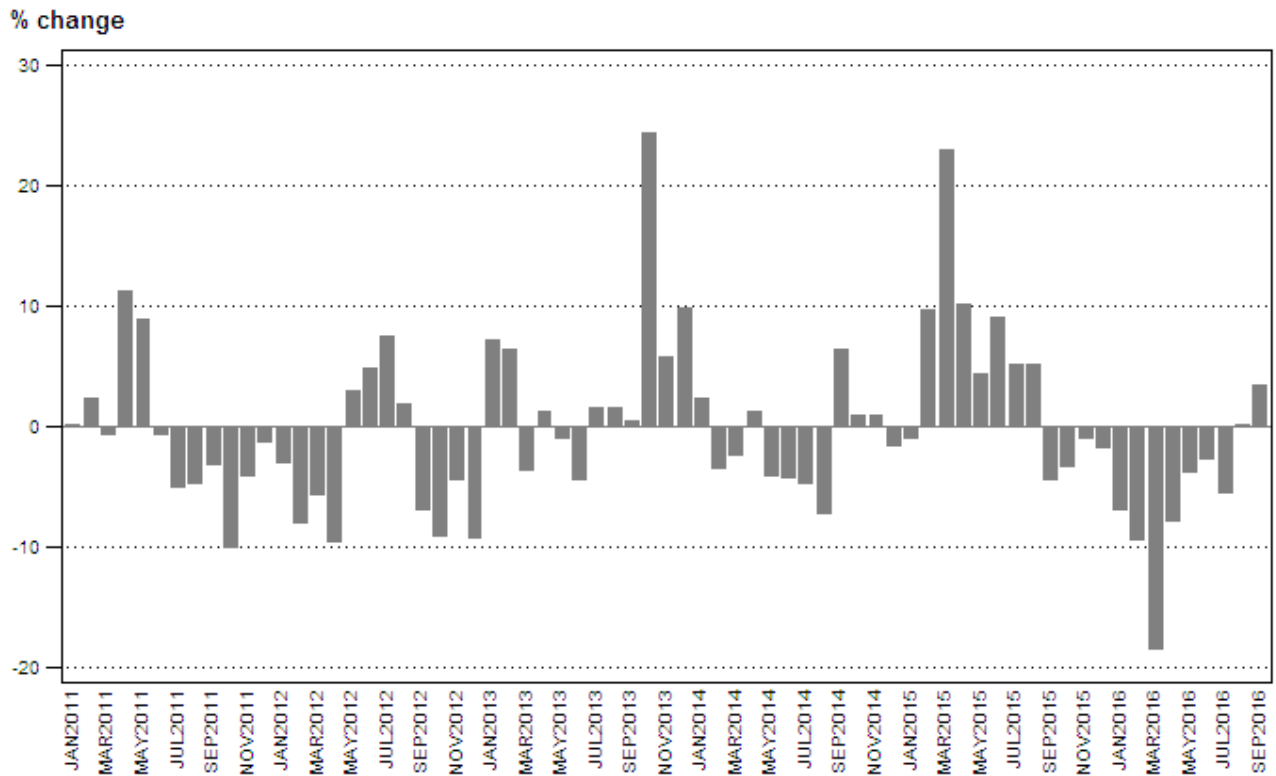


Figure 2 – Volume of mining production (Base: 2010=100): year-on-year percentage change



Sales: results for August 2016**Table C – Key growth rates in mineral sales at current prices**

	Mar-16	Apr-16	May-16	Jun-16	Jul-16	Aug-16
Year-on-year % change, unadjusted	-0,8	-4,2	17,4	15,6	-0,7	10,6
Month-on-month % change, seasonally adjusted	-0,9	2,2	19,8	-7,3	-11,4	8,1
3-month % change, seasonally adjusted ^{1/}	0,3	3,0	8,9	13,5	11,0	-0,6

^{1/} Percentage change between the previous three months and the three months ending in the month indicated.

Mineral sales increased by 10,6% year-on-year in August 2016. The largest positive contributors to the increase of 10,6% were:

- iron ore (50,9% and contributing 4,3 percentage points);
- coal (12,0% and contributing 3,3 percentage points); and
- gold (14,2% and contributing 2,3 percentage points) – see Tables 12 and 13.

Seasonally adjusted mineral sales at current prices increased by 8,1% in August 2016 compared with July 2016. This followed month-on-month changes of -11,4% in July 2016 and -7,3% in June 2016.

PJ Lehohla
Statistician-General

Tables

Table 1 – Index of the volume of mining production (Base: 2010=100)

Month	2010	2011	2012	2013	2014	2015 1/	2016 1/
Jan	86,2	86,4	83,9	89,9	92,1	91,3	85,0
Feb	88,1	90,2	83,0	88,3	85,2	93,4	84,6
Mar	102,8	102,2	96,5	93,0	90,9	111,7	91,2
Apr	90,4	100,5	91,0	92,2	93,4	102,8	94,8
May	91,5	99,6	102,6	101,6	97,5	101,7	97,9
Jun	103,8	103,2	108,2	103,5	99,2	108,1	105,2
Jul	101,7	96,6	103,8	105,4	100,4	105,6	99,9
Aug	107,8	102,8	104,6	106,2	98,6	103,7	103,8
Sep	109,5	106,1	98,8	99,2	105,5	101,0	104,4
Oct	103,7	93,3	84,8	105,4	106,4	102,9	
Nov	108,5	104,0	99,4	105,2	106,1	105,0	
Dec	106,1	104,7	95,1	104,4	102,7	101,0	
Year	100,0	99,1	96,0	99,5	98,2	102,4	

1/ Preliminary.

Table 2 – Year-on-year percentage change in the volume of mining production

Month	2011	2012	2013	2014	2015	2016	2016 year-to-date
Jan	0,2	-2,9	7,2	2,4	-0,9	-6,9	-6,9
Feb	2,4	-8,0	6,4	-3,5	9,6	-9,4	-8,2
Mar	-0,6	-5,6	-3,6	-2,3	22,9	-18,4	-12,0
Apr	11,2	-9,5	1,3	1,3	10,1	-7,8	-10,9
May	8,9	3,0	-1,0	-4,0	4,3	-3,7	-9,5
Jun	-0,6	4,8	-4,3	-4,2	9,0	-2,7	-8,3
Jul	-5,0	7,5	1,5	-4,7	5,2	-5,4	-7,8
Aug	-4,6	1,8	1,5	-7,2	5,2	0,1	-6,8
Sep	-3,1	-6,9	0,4	6,4	-4,3	3,4	-5,7
Oct	-10,0	-9,1	24,3	0,9	-3,3		
Nov	-4,1	-4,4	5,8	0,9	-1,0		
Dec	-1,3	-9,2	9,8	-1,6	-1,7		
Year	-0,9	-3,1	3,6	-1,3	4,3		

Table 3 – Seasonally adjusted volume of total mining production

Month	Index (Base: 2010=100)				Month-on-month % change			
	2013	2014	2015	2016	2013	2014	2015	2016
Jan	98,1	100,0	99,4	93,6	3,0	-4,7	-0,9	-5,4
Feb	99,2	96,8	105,4	94,6	1,1	-3,2	6,0	1,1
Mar	95,8	92,3	114,6	93,5	-3,4	-4,6	8,7	-1,2
Apr	94,2	96,2	105,6	95,9	-1,7	4,2	-7,9	2,6
May	100,9	96,8	101,9	98,9	7,1	0,6	-3,5	3,1
Jun	99,7	96,1	103,6	100,5	-1,2	-0,7	1,7	1,6
Jul	101,8	97,2	102,8	98,1	2,1	1,1	-0,8	-2,4
Aug	102,4	95,6	101,2	100,4	0,6	-1,6	-1,6	2,3
Sep	96,8	102,3	97,0	101,3	-5,5	7,0	-4,2	0,9
Oct	101,7	102,6	99,2		5,1	0,3	2,3	
Nov	98,7	100,5	100,4		-2,9	-2,0	1,2	
Dec	104,9	100,3	98,9		6,3	-0,2	-1,5	

Table 4 – Index of the volume of mining production by mineral group and mineral (Base: 2010=100) 1/

Mineral group and mineral	Weight	Apr-16	May-16	Jun-16	Jul-16	Aug-16	Sep-16
Gold	16,25	69,0	77,5	83,4	75,4	73,9	78,9
Iron ore	14,86	98,6	94,4	131,2	128,1	132,3	129,3
Chromium ore	2,63	129,4	131,0	139,7	138,6	142,1	154,2
Copper	1,27	79,7	64,3	35,6	64,4	101,8	101,8
Manganese ore	3,09	180,2	173,7	209,1	182,4	192,3	197,6
PGMs	21,82	97,9	111,1	104,9	90,2	105,4	104,6
Nickel	1,88	133,6	122,5	115,4	109,8	124,7	120,1
Other metallic minerals	2,88	75,9	73,0	91,4	78,3	77,7	82,3
Diamonds	3,59	75,5	77,9	80,2	104,7	90,3	86,1
Coal	25,04	98,5	99,0	102,7	102,4	99,8	100,1
Building materials	1,65	115,1	122,4	124,7	121,9	122,4	124,6
Other non-metallic minerals	5,04	72,1	68,3	63,0	62,2	65,9	64,7
Total	100,00	94,8	97,9	105,2	99,9	103,8	104,4

1/ All index values in this table are preliminary.

Table 5 – Seasonally adjusted index of the volume of mining production by mineral group and mineral (Base: 2010=100)

Mineral group and mineral	Apr-16	May-16	Jun-16	Jul-16	Aug-16	Sep-16	Month-on-month % change
Gold	76,7	76,8	76,0	77,3	71,8	73,7	2,6
Iron ore	101,9	96,6	118,9	120,8	132,0	129,6	-1,8
Chromium ore	126,7	127,7	131,2	136,7	136,6	142,4	4,2
Copper ¹	79,7	64,3	35,6	64,4	101,8	101,8	0,0
Manganese ore ¹	180,2	173,7	209,1	182,4	192,3	197,6	2,8
PGMs	98,5	117,5	101,2	90,3	98,4	97,7	-0,7
Nickel ¹	133,6	122,5	115,4	109,8	124,7	120,1	-3,7
Other metallic minerals ¹	75,9	73,0	91,4	78,3	77,7	82,3	5,9
Diamonds ¹	75,5	77,9	80,2	104,7	90,3	86,1	-4,7
Coal	95,7	96,9	101,2	98,3	94,4	99,2	5,1
Building materials	112,6	116,3	116,6	114,4	114,1	114,8	0,6
Other non-metallic minerals	72,7	69,9	61,1	63,4	67,5	62,3	-7,7
Total	95,9	98,9	100,5	98,1	100,4	101,3	0,9

¹ Not seasonally adjusted, because the presence of seasonality is not significant. See notes 4 and 5 on page 11.

Table 6 – Year-on-year percentage change in the volume of mining production by mineral group and mineral

Mineral group and mineral	Apr-16	May-16	Jun-16	Jul-16	Aug-16	Sep-16
Gold	-1,4	3,3	-1,3	2,0	-8,4	-7,0
Iron ore	-23,4	-26,4	1,0	3,4	19,0	11,7
Chromium ore	-9,7	-12,3	-12,5	-6,4	-6,0	-5,2
Copper	-11,5	-25,8	-50,8	-30,4	10,8	0,3
Manganese ore	-20,0	-26,1	-15,6	-24,9	-10,3	-11,6
PGMs	-4,4	23,2	3,9	-9,6	3,6	10,5
Nickel	4,9	-9,4	-26,1	-14,1	-20,8	-15,5
Other metallic minerals	-13,1	-28,6	11,3	-11,7	-17,8	27,2
Diamonds	-2,3	14,1	-37,7	5,7	-3,9	14,8
Coal	0,0	0,5	5,0	-2,1	-0,6	6,8
Building materials	4,5	1,7	2,6	-5,4	-1,6	0,2
Other non-metallic minerals	-5,6	-10,6	-17,3	-22,3	-13,2	-21,4
Total	-7,8	-3,7	-2,7	-5,4	0,1	3,4

Table 7 – Contribution of each mineral group and mineral to the year-on-year percentage change in the volume of mining production (percentage points)

Mineral group and mineral	Apr-16	May-16	Jun-16	Jul-16	Aug-16	Sep-16
Gold	-0,2	0,4	-0,2	0,2	-1,1	-0,9
Iron ore	-4,4	-5,0	0,2	0,6	3,0	2,0
Chromium ore	-0,4	-0,5	-0,5	-0,2	-0,2	-0,2
Copper	-0,1	-0,3	-0,4	-0,3	0,1	0,0
Manganese ore	-1,4	-1,9	-1,1	-1,8	-0,7	-0,8
PGMs	-1,0	4,5	0,8	-2,0	0,8	2,1
Nickel	0,1	-0,2	-0,7	-0,3	-0,6	-0,4
Other metallic minerals	-0,3	-0,8	0,2	-0,3	-0,5	0,5
Diamonds	-0,1	0,3	-1,6	0,2	-0,1	0,4
Coal	0,0	0,1	1,1	-0,5	-0,1	1,6
Building materials	0,1	0,0	0,0	-0,1	0,0	0,0
Other non-metallic minerals	-0,2	-0,4	-0,6	-0,9	-0,5	-0,9
Total	-7,8	-3,7	-2,7	-5,4	0,1	3,4

Table 8 – Mineral sales at current prices (R million)

Month	2010	2011	2012	2013	2014	2015 1/	2016 1/
Jan	19 185,1	25 341,3	28 079,4	28 977,1	32 608,8	27 681,7	26 943,0
Feb	20 408,4	27 573,2	29 335,5	30 361,5	35 488,2	30 394,0	30 806,7
Mar	23 860,1	31 547,4	30 912,0	34 761,4	35 172,2	34 521,0	34 250,3
Apr	23 551,4	27 370,2	26 772,5	31 865,2	31 647,7	32 227,3	30 876,7
May	25 535,2	27 870,5	31 257,0	30 402,1	30 932,4	32 457,0	38 091,4
Jun	25 882,9	33 940,1	33 958,2	35 088,5	31 630,8	35 562,5	41 116,2
Jul	25 588,6	27 947,7	30 899,0	32 847,9	31 517,7	30 958,1	30 751,1
Aug	25 897,8	30 300,9	31 402,3	35 523,4	32 124,1	31 314,6	34 623,9
Sep	27 994,7	35 700,1	30 367,0	34 731,0	35 345,8	33 412,7	
Oct	27 535,5	33 393,7	28 258,6	34 544,7	34 101,5	32 998,7	
Nov	27 114,9	35 268,1	29 921,3	34 122,6	32 274,1	30 900,1	
Dec	27 737,9	34 027,5	32 954,5	34 452,5	33 434,3	34 056,9	
Total	300 292,5	370 280,7	364 117,3	397 677,9	396 277,6	386 484,6	

1/ Preliminary.

Table 9 – Year-on-year percentage change in mineral sales at current prices

Month	2011	2012	2013	2014	2015	2016	2016 year-to-date
Jan	32,1	10,8	3,2	12,5	-15,1	-2,7	-2,7
Feb	35,1	6,4	3,5	16,9	-14,4	1,4	-0,6
Mar	32,2	-2,0	12,5	1,2	-1,9	-0,8	-0,6
Apr	16,2	-2,2	19,0	-0,7	1,8	-4,2	-1,6
May	9,1	12,2	-2,7	1,7	4,9	17,4	2,3
Jun	31,1	0,1	3,3	-9,9	12,4	15,6	4,8
Jul	9,2	10,6	6,3	-4,0	-1,8	-0,7	4,0
Aug	17,0	3,6	13,1	-9,6	-2,5	10,6	4,8
Sep	27,5	-14,9	14,4	1,8	-5,5		
Oct	21,3	-15,4	22,2	-1,3	-3,2		
Nov	30,1	-15,2	14,0	-5,4	-4,3		
Dec	22,7	-3,2	4,5	-3,0	1,9		
Total	23,3	-1,7	9,2	-0,4	-2,5		

Table 10 – Seasonally adjusted total mineral sales at current prices

Month	R million				Month-on-month % change			
	2013	2014	2015	2016	2013	2014	2015	2016
Jan	31 929,9	36 414,2	30 725,7	31 195,1	-0,7	7,1	-6,0	-3,0
Feb	32 113,4	37 420,3	31 996,8	32 381,9	0,6	2,8	4,1	3,8
Mar	33 989,9	33 726,6	33 560,9	32 092,7	5,8	-9,9	4,9	-0,9
Apr	33 389,3	33 412,8	32 847,0	32 813,5	-1,8	-0,9	-2,1	2,2
May	30 739,4	30 932,2	33 706,7	39 312,8	-7,9	-7,4	2,6	19,8
Jun	32 256,4	29 151,6	32 636,4	36 430,1	4,9	-5,8	-3,2	-7,3
Jul	33 900,3	31 646,1	31 484,5	32 290,8	5,1	8,6	-3,5	-11,4
Aug	34 621,0	32 675,6	31 304,4	34 906,2	2,1	3,3	-0,6	8,1
Sep	32 994,2	33 507,2	31 766,2		-4,7	2,5	1,5	
Oct	33 471,5	33 406,7	32 072,8		1,4	-0,3	1,0	
Nov	34 449,7	32 264,3	31 117,9		2,9	-3,4	-3,0	
Dec	33 988,2	32 681,0	32 155,8		-1,3	1,3	3,3	

Table 11 – Mineral sales at current prices by mineral group and mineral (R million) 1/

Mineral group and mineral	Mar-16	Apr-16	May-16	Jun-16	Jul-16	Aug-16
Gold	7 109,5	5 574,0	7 091,2	7 145,2	6 431,9	5 689,7
Iron ore	3 686,8	3 755,3	3 544,8	3 379,6	3 683,2	4 012,1
Chromium ore	1 294,3	1 124,5	1 423,3	1 295,5	1 049,1	1 227,9
Copper	374,5	299,4	322,8	288,6	222,6	313,3
Manganese ore	904,3	1 452,0	1 921,2	1 987,0	1 274,8	1 247,4
PGMs	6 809,3	6 184,5	10 618,7	11 924,4	6 895,4	8 149,1
Nickel	670,7	540,3	622,6	447,8	452,9	653,2
Other metallic minerals	848,8	639,2	676,3	898,8	518,3	821,2
Coal	8 723,7	8 546,2	8 874,5	9 209,8	8 028,8	9 682,7
Building materials	871,1	948,1	971,9	956,1	942,5	959,7
Other non-metallic minerals	2 957,3	1 813,2	2 024,1	3 583,4	1 251,7	1 867,5
Total	34 250,3	30 876,7	38 091,4	41 116,2	30 751,1	34 623,9

1/ All values in this table are preliminary.

Table 12 – Year-on-year percentage change in mineral sales at current prices by mineral group and mineral

Mineral group and mineral	Mar-16	Apr-16	May-16	Jun-16	Jul-16	Aug-16
Gold	24,3	13,6	44,1	20,3	35,2	14,2
Iron ore	2,6	9,9	14,5	-12,5	27,2	50,9
Chromium ore	-11,0	-18,7	-3,5	-9,6	-25,3	-25,0
Copper	-36,0	-14,1	-35,4	-52,3	-24,3	8,8
Manganese ore	-17,2	28,9	82,6	90,9	8,1	30,0
PGMs	-17,1	-30,9	20,1	35,5	-14,3	3,6
Nickel	5,0	-36,9	-16,4	-50,5	-1,3	29,9
Other metallic minerals	-25,6	-19,2	-9,6	-16,8	-35,6	-30,5
Coal	2,6	3,3	13,9	6,9	-11,8	12,0
Building materials	-8,2	10,0	2,7	7,2	-0,2	7,2
Other non-metallic minerals	12,4	38,1	-13,5	49,6	15,9	10,0
Total	-0,8	-4,2	17,4	15,6	-0,7	10,6

Table 13 – Contribution of each mineral group and mineral to the year-on-year percentage change in mineral sales at current prices (percentage points)

Mineral group and mineral	Mar-16	Apr-16	May-16	Jun-16	Jul-16	Aug-16
Gold	4,0	2,1	6,7	3,4	5,4	2,3
Iron ore	0,3	1,0	1,4	-1,4	2,5	4,3
Chromium ore	-0,5	-0,8	-0,2	-0,4	-1,1	-1,3
Copper	-0,6	-0,2	-0,5	-0,9	-0,2	0,1
Manganese ore	-0,5	1,0	2,7	2,7	0,3	0,9
PGMs	-4,1	-8,6	5,5	8,8	-3,7	0,9
Nickel	0,1	-1,0	-0,4	-1,3	0,0	0,5
Other metallic minerals	-0,8	-0,5	-0,2	-0,5	-0,9	-1,2
Coal	0,6	0,8	3,3	1,7	-3,5	3,3
Building materials	-0,2	0,3	0,1	0,2	0,0	0,2
Other non-metallic minerals	0,9	1,6	-1,0	3,3	0,6	0,5
Total	-0,8	-4,2	17,4	15,6	-0,7	10,6

Survey information

Introduction	1	Statistics South Africa (Stats SA) publishes monthly mining production indices and mineral sales based on the information furnished by the Department of Mineral Resources (DMR). Data in this release are presented by mineral group and mineral.
	2	In accordance with international practice, the indices are usually re-based every five years to a new base year. The current base year of the index of the volume of mining production is 2010=100. Both actual and seasonally adjusted figures are presented.
	3	Due to mining production figures being available earlier than mineral sales figures, mining production indices are published one month earlier than mineral sales.
	4	The value of mineral sales is calculated, in general, on a free-on-rail/free-on-board basis.
	5	In order to improve timeliness, some information for the current month had to be estimated due to late response. These estimates will be revised in future statistical release(s) as soon as more up-to-date information is available.
Purpose of the survey	6	The monthly mining production and sales survey is conducted by the DMR, covering all mining establishments operating in the South African economy. The results of this survey are used to calculate the volume of mining production indices in order to estimate the gross domestic product (GDP) and its components, which in turn are used to develop and monitor government policy.
Scope of the survey	7	This survey covers mining establishments conducting activities regarding the extracting, dressing and beneficiating of minerals occurring naturally, for example solids such as coal and ores.
Classification	8	The 1993 edition of the <i>Standard Industrial Classification of all Economic Activities</i> (SIC), Fifth Edition, Report No. 09-90-02, was used to classify the statistical units in the survey. The SIC is based on the 1990 <i>International Standard Industrial Classification of all Economic Activities</i> (ISIC) with suitable adaptations for local conditions. Each statistical unit is classified to an industry which reflects the predominant activity of the establishment. Statistics in this publication are presented by mineral group and mineral.
Statistical unit	9	The statistical unit for the collection of information is the mining establishment. An establishment is the smallest economic unit that functions as a separate entity.
Rounding-off of figures	10	The figures in the tables have, where necessary, been rounded off to the nearest digit shown. There may, therefore, be slight discrepancies between the sums of the constituent items and the totals shown.
Historical data and past publications	11	Historical mining data and past publications are available on the Stats SA website. Click on the following link (Time series data) or (Past publications) to access the data and releases electronically.

Technical notes

- | | | |
|---|-----------|---|
| Index of the volume of mining production | 1 | The index of the volume of mining production, also known as the production index, is a statistical measure of the change in the volume of production. The production index of a mineral group is the ratio between the volume of production of a mineral group in a given period and the volume of production of the same mineral group in the base period. The current base period is 2010. The production in the base period is set at 100. |
| Index weighting | 2 | The weight of a mineral group is the ratio of its value added to the total value added of the mining industry. The weight of a mineral group reflects the importance of the mineral group in the total mining industry. The weights change over time due to quality improvements and changes in relative prices. New weights will be calculated annually. |
| | 3 | The weights, which are used to aggregate minerals to mineral groups and mineral groups to total mining, are derived from national accounts value added data. The latest weights (implemented in the July 2016 publication) are based on an average of value added data for the years 2012, 2013 and 2014. These weights are applicable from January 2014. |
| Seasonal adjustment | 4 | Seasonally adjusted estimates are generated each month using the X-12-ARIMA Seasonal Adjustment Program developed by the US Bureau of the Census, 1968. Seasonal adjustment is a means of removing the estimated effects of normal seasonal variation from the series so that the effects of other influences on the series can be recognised more clearly. Seasonal adjustment does not aim to remove irregular or non-seasonal influences which may be present in any particular month. |
| | 5 | Influences that are volatile or unsystematic can still make it difficult to interpret the movement of the series even after adjustment for seasonal variations. This means the month-to-month movements of seasonally adjusted estimates may not be reliable indicators of trend behaviour. The X-12-ARIMA procedure for mining production and sales is described in more detail on the Stats SA website at:
http://www.statssa.gov.za/publications/P2041/Seasonal_adjustment_X12.pdf |
| Trend cycle | 6 | The trend is the long-term pattern or movement of a time series. The X-12-ARIMA Seasonal Adjustment Program is used for smoothing seasonally adjusted estimates to estimate the underlying trend cycle. |
| Reliability of estimates | 7 | Figures for the latest 2 calendar years are preliminary. |
| Month-on-month percentage change | 8 | The month-on-month percentage change in a variable for any given month is the change between that month and the previous month, expressed as a percentage of the latter. |
| Year-on-year percentage change | 9 | The year-on-year percentage change in a variable for any given period is the change between that period and the corresponding period of the previous year, expressed as a percentage of the latter. |
| Index contribution (percentage points) | 10 | The contribution (percentage points) of a mineral group or mineral to the percentage change in the total mining production for a given period is calculated by multiplying the difference in the index for each mineral group or mineral by the weight of the mineral group or mineral and then dividing by the previous period's total index. |
| Sales contribution (percentage points) | 11 | The contribution (percentage points) to the percentage change in total sales for a given period is calculated by multiplying the percentage change of each mineral group or mineral with its percentage contribution to total mineral sales of the previous period, divided by 100. |

Glossary

Free-on-rail	Free-on-rail relates to goods sold on the local market where no railage or road transport costs are involved.																
Free-on-board	Free-on-board relates to goods destined for the export market. Railage, road transport and docking charges are involved but no charges are made for transport by sea.																
Industry	An industry consists of a group of establishments engaged in the same or similar kinds of economic activity. Industries are defined in the <i>System of National Accounts</i> (SNA) in the same way as in the <i>Standard Industrial Classification of all Economic Activities</i> (SIC), Fifth Edition of January 1993.																
PGMs – Platinum group metals	Platinum group metals include platinum, iridium, osmiridium, palladium, rhodium, ruthenium and osmium.																
Sales	Sales are the total value of sales of primary minerals at the first point of saleability by the mining establishment.																
Symbols and abbreviations	<table> <tr> <td>DMR</td> <td>Department of Mineral Resources</td> </tr> <tr> <td>GDP</td> <td>Gross domestic product</td> </tr> <tr> <td>ISIC</td> <td>International Standard Industrial Classification</td> </tr> <tr> <td>PGMs</td> <td>Platinum group metals</td> </tr> <tr> <td>SIC</td> <td>Standard Industrial Classification of all Economic Activities</td> </tr> <tr> <td>SNA</td> <td>System of National Accounts</td> </tr> <tr> <td>Stats SA</td> <td>Statistics South Africa</td> </tr> <tr> <td>*</td> <td>Revised</td> </tr> </table>	DMR	Department of Mineral Resources	GDP	Gross domestic product	ISIC	International Standard Industrial Classification	PGMs	Platinum group metals	SIC	Standard Industrial Classification of all Economic Activities	SNA	System of National Accounts	Stats SA	Statistics South Africa	*	Revised
DMR	Department of Mineral Resources																
GDP	Gross domestic product																
ISIC	International Standard Industrial Classification																
PGMs	Platinum group metals																
SIC	Standard Industrial Classification of all Economic Activities																
SNA	System of National Accounts																
Stats SA	Statistics South Africa																
*	Revised																

Technical enquiries

JP Terblanche	Telephone number: (012) 310 2965 Email: juan-pierret@statssa.gov.za
Mpuleng Galane	Telephone number: (012) 444 3735 Email: mpuleng.galane@dmr.gov.za

