

Statistical release

P2041

Mining: Production and sales (Preliminary)

September 2010

Embargoed until:
11 November 2010
11:30

Enquiries:

User Information Services
Tel: (012) 310 8600 / 4892 /8390

Forthcoming issue:

October 2010

Expected release date:

9 December 2010

Contents

Key results for September 2010 2

Detailed results: 6

Table 1 – Total index of the physical volume of mining production: 2004 – 2010 6

Table 2 – Annual percentage change in the index of the physical volume of mining production: 2004 – 2010 6

Table 3 – Total seasonally adjusted index of the physical volume of total mining production: 2004 – 2010 6

Table 4 – Indices of the physical volume of mining production according to mineral groups and minerals 7

Table 5 – Seasonally adjusted indices of the physical volume of mining production according to mineral groups and minerals 7

Table 6 – Annual percentage change in the three-monthly physical volume of mining production according to mineral groups and minerals 8

Table 7 – Annual percentage change in the cumulative physical volume of mining production according to mineral groups and minerals 8

Table 8 – Total value of mineral sales (R million): 2004 – 2010 9

Table 9 – Annual percentage change in the total value of mineral sales: 2004 – 2010 9

Table 10 – Seasonally adjusted total value of mineral sales (R million): 2004 – 2010 9

Table 11 – Estimated actual value of mineral sales according to mineral groups and minerals 10

Table 12 – Seasonally adjusted value of mineral sales according to mineral groups and minerals 10

Table 13 – Annual percentage change in the three-monthly value of mineral sales according to mineral groups and minerals 11

Table 14 – Annual percentage change in the cumulative value of mineral sales according to mineral groups and minerals 11

Explanatory notes 12

Glossary 14

General information 15

Key results for September 2010

Table A – Total mining production

Actual estimate	Base : 2005=100			
	September 2010	% change between September 2009 and September 2010	% change between July to September 2009 and July to September 2010	% change between January to September 2009 and January to September 2010
Physical volume of mining production index	101,1	12,1	7,8	5,1

Seasonally adjusted estimate	Base : 2005=100		
	September 2010	% change between August and September 2010	% change between April to June 2010 and July to September 2010
Physical volume of mining production index	91,3	-2,8	6,9

Table B – Three-monthly contribution of the mineral groups and minerals to the total seasonally adjusted mining production

Mineral groups and minerals	Base : 2005=100					
	Weights 2005	April to June 2010	July to September 2010	% change between April to June 2010 and July to September 2010	Difference between April to June 2010 and July to September 2010	Contribution (% points) to the % change in total mining production 1/
Gold	17,2	64,8	65,1	0,5	0,3	0,1
Iron ore	5,3	150,1	141,0	-6,0	-9,1	-0,6
Chromium ore	1,3	136,4	128,9	-5,5	-7,5	-0,1
Copper	1,8	73,0	79,8	9,3	6,8	0,1
Manganese ore	1,5	153,0	146,4	-4,3	-6,6	-0,1
PGMs	27,0	82,0	98,8	20,5	16,8	5,3
Nickel	2,8	88,1	90,4	2,6	2,3	0,1
Other metallic minerals	2,8	92,5	92,3	-0,3	-0,2	0,0
Diamonds	7,6	54,4	56,2	3,4	1,8	0,2
Coal	24,9	97,0	104,6	7,9	7,6	2,2
Building materials	2,1	96,5	90,1	-6,6	-6,4	-0,2
Other non-metallic minerals	5,7	69,7	69,7	0,0	0,0	0,0
Total	100,0	86,0	91,9	6,9	5,9	6,9

1/ The contribution (percentage points) of a mineral or mineral group to the percentage change in the total seasonally adjusted mining production is calculated by multiplying the difference in the index for the mineral or mineral group by the weight of the mineral or mineral group and then dividing by the previous period's total index. Figures have been rounded off.

Key findings regarding mining production for September 2010

Mining production increased by 12,1% year-on-year in September 2010 compared with a 10,7% increase in August 2010 (see Table 2).

Seasonally adjusted total mining production increased by 6,9% in the third quarter of 2010 compared with the second quarter of 2010. The main contributors to the 6,9% increase were PGMs (contributing 5,3 percentage points) and coal (contributing 2,2 percentage points). Iron ore production contributed negatively (-0,6 of a percentage point) during this period (see Table B).

Actual estimated total mining production increased by 7,8% for the third quarter of 2010 compared with the third quarter of 2009 (see Tables A and 6).

Figure 1 shows the seasonally adjusted figures and trend series for the index of total mining production between January 2005 and September 2010.

Figure 1 – Monthly indices of physical volume of total mining production (Base: 2005=100)

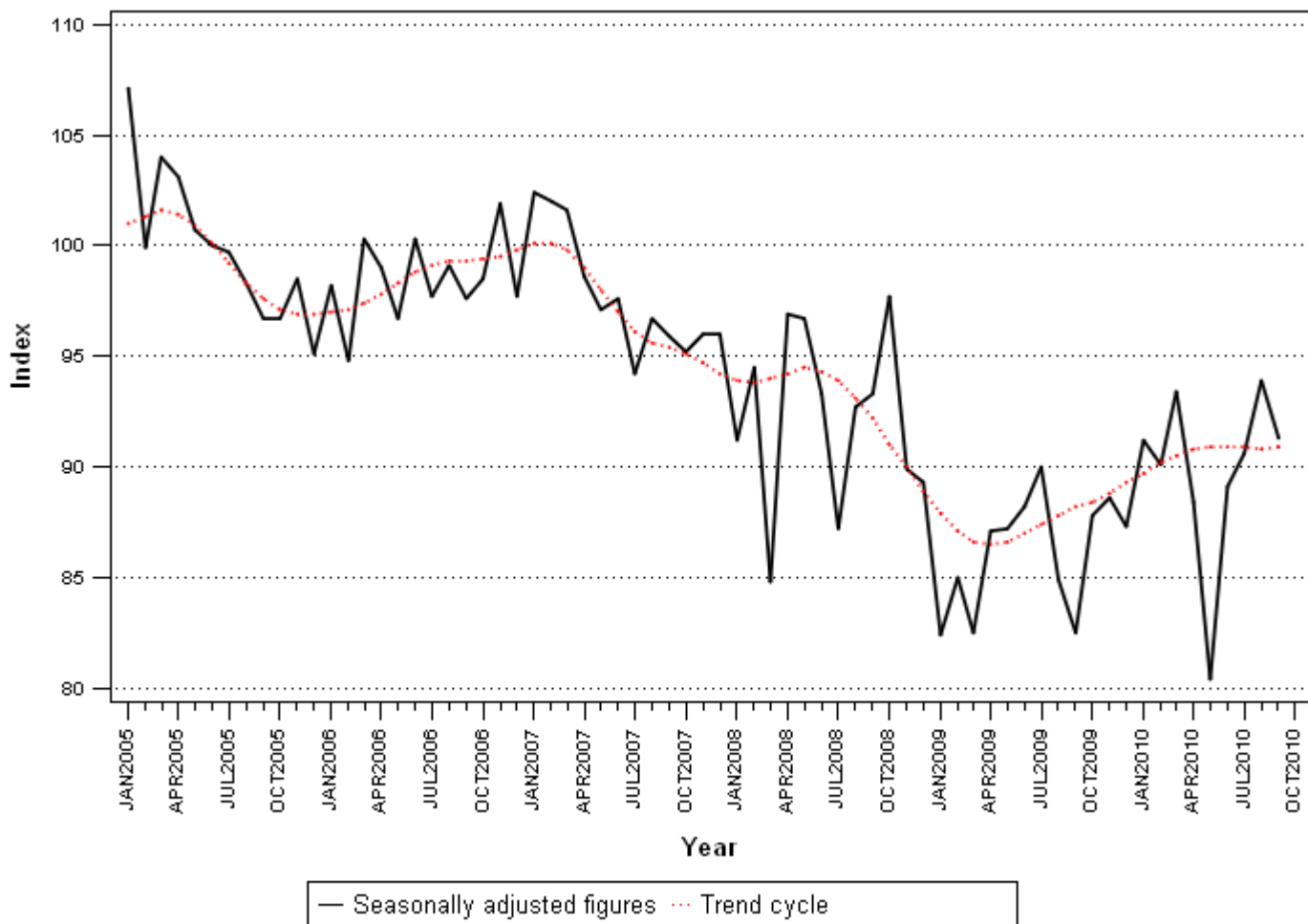


Table C – Total value of mineral sales

Actual estimate	August 2010	% change between August 2009 and August 2010	% change between June to August 2009 and June to August 2010	% change between January to August 2009 and January to August 2010
	R million			
Total value of mineral sales	25 682,8	27,5	26,7	18,5

Seasonally adjusted estimate	August 2010	% change between July and August 2010	% change between March to May 2010 and June to August 2010
	R million		
Total value of mineral sales	25 772,9	3,5	5,6

Table D – Contribution of the mineral groups and minerals to the seasonally adjusted three-monthly growth in the total value of mineral sales (R million)

Mineral groups and minerals	% contribution to total mineral sales during March to May 2010	March to May 2010	June to August 2010	% change between March to May 2010 and June to August 2010	Contribution to the % change in the total value of mineral sales 1/	Difference between March to May 2010 and June to August 2010
		R million	R million			
Gold	17,3	12 304,4	14 878,3	20,9	3,6	2 573,9
Iron ore	14,6	10 370,7	11 359,8	9,5	1,4	989,1
Chromium ore	1,9	1 350,8	1 233,7	-8,7	-0,2	-117,1
Copper	1,7	1 174,4	927,8	-21,0	-0,4	-246,6
Manganese ore	3,9	2 764,2	2 411,5	-12,8	-0,5	-352,7
PGMs	23,7	16 841,2	18 232,6	8,3	2,0	1 391,4
Nickel	2,1	1 480,8	1 281,9	-13,4	-0,3	-198,9
Other metallic minerals	3,1	2 189,0	1 816,6	-17,0	-0,5	-372,4
Coal	24,3	17 256,9	17 412,3	0,9	0,2	155,4
Building materials	2,5	1 801,3	1 725,5	-4,2	-0,1	-75,8
Other non-metallic minerals	4,9	3 475,6	3 703,5	6,6	0,3	227,9
Total	100,0	71 009,3	74 983,5	5,6	5,6	3 974,2

1/ The contribution (percentage points) to the percentage change in sales is calculated by multiplying the percentage change of each mineral with the percentage contribution to total mineral sales during March to May 2010, divided by 100. Figures have been rounded off.

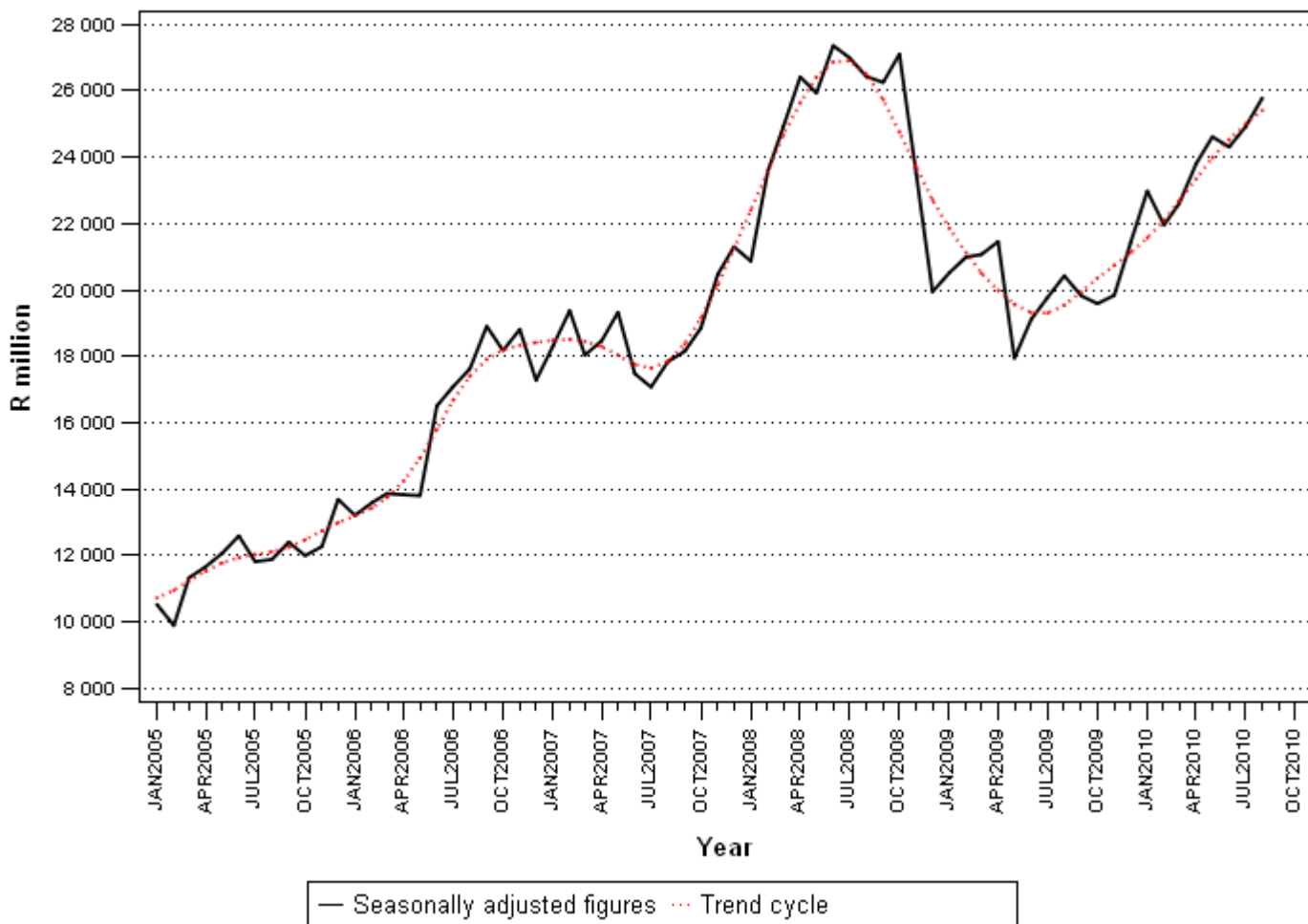
Key findings regarding mineral sales for August 2010

The total seasonally adjusted value of mineral sales at current prices for the three months ended August 2010 reflected an increase of 5,6% compared with the previous three months. The increase of 5,6% (R3 974,2 million) was mainly due to increases in the sales value of gold (contributing 3,6 percentage points or R2 573,9 million), PGMs (contributing 2,0 percentage points or R1 391,4 million) and iron ore (contributing 1,4 percentage points or R989,1 million) (see Table D).

The actual estimated total value of mineral sales at current prices for the three months ended August 2010 increased by 26,7% compared with the three months ended August 2009. The major contributors to this increase were PGMs (contributing 8,9 percentage points or R5 394,2 million), iron ore (contributing 5,5 percentage points or R3 365,7 million), gold (contributing 4,6 percentage points or R2 810,1 million), manganese ore (contributing 2,8 percentage points or R1 650,4 million) and coal (contributing 2,6 percentage points or R1 568,3 million) (see Table 13).

Figure 2 shows the seasonally adjusted figures and trend series of the total value of mineral sales between January 2005 and August 2010.

Figure 2 – Total value of mineral sales



PJ Lehohla
Statistician-General

Detailed results:

Table 1 – Total index of the physical volume of mining production: 2004 – 2010

Month	Base : 2005=100						
	2004	2005	2006	2007	2008	2009	2010 1/
January	90,2	97,1	87,7	90,1	79,0	71,4	78,2
February	87,6	90,4	85,2	90,8	83,6	74,6	79,8
March	101,1	104,8	101,7	102,9	85,6	83,7	94,6
April	94,1	99,2	94,8	93,9	91,4	81,3	82,4
May	101,2	102,7	98,7	99,0	98,1	88,6	81,6
June	99,5	104,0	104,9	102,6	98,4	93,0	93,8
July	107,0	101,4	99,4	96,0	89,4	92,4	93,3
August	102,4	102,8	103,7	101,6	97,5	89,5	99,1
September	105,1	103,1	105,1	104,5	102,3	90,2	101,1
October	96,9	98,5	100,2	97,0	99,0	89,2	
November	98,6	100,4	104,2	98,6	92,4	91,0	
December	101,5	95,7	98,9	96,8	90,7	88,9	
Year	98,8	100,0	98,7	97,8	92,3	86,2	

1/ Preliminary.

Table 2 – Annual percentage change in the index of the physical volume of mining production: 2004 – 2010

Month	Percentage change 2/						
	2004	2005	2006	2007	2008	2009	2010
January	18,3	7,7	-9,7	2,7	-12,4	-9,6	9,5
February	-3,8	3,2	-5,7	6,5	-7,9	-10,8	7,0
March	11,0	3,6	-3,0	1,2	-16,8	-2,2	13,0
April	4,0	5,5	-4,4	-1,0	-2,6	-11,0	1,4
May	5,5	1,4	-3,9	0,3	-0,9	-9,7	-7,9
June	2,3	4,6	0,9	-2,2	-4,1	-5,5	0,9
July	7,9	-5,2	-2,0	-3,4	-6,8	3,3	1,0
August	4,7	0,4	0,9	-2,0	-4,0	-8,2	10,7
September	2,5	-1,9	2,0	-0,6	-2,1	-11,8	12,1
October	-5,5	1,7	1,7	-3,2	2,1	-9,9	
November	1,3	1,9	3,7	-5,3	-6,3	-1,5	
December	-0,2	-5,8	3,4	-2,1	-6,3	-2,0	
Year	3,7	1,3	-1,3	-0,9	-5,6	-6,7	

2/ The annual percentage change is the change in the index of the physical volume of mining production of the relevant month of the current year compared with the corresponding month of the previous year expressed as a percentage.

Table 3 – Total seasonally adjusted index of the physical volume of total mining production: 2004 – 2010

Month	Base : 2005=100						
	2004	2005	2006	2007	2008	2009	2010
January	101,1	107,1	98,2	102,4	91,2	82,4	91,2
February	99,0	99,9	94,8	102,0	94,5	85,0	90,1
March	101,1	104,0	100,3	101,6	84,8	82,5	93,4
April	97,4	103,1	99,0	98,6	96,9	87,1	88,4
May	99,4	100,7	96,7	97,1	96,7	87,2	80,4
June	96,6	100,0	100,3	97,6	93,3	88,2	89,1
July	105,9	99,7	97,7	94,2	87,2	90,0	90,6
August	99,9	98,3	99,1	96,7	92,7	84,9	93,9
September	100,3	96,7	97,6	95,9	93,3	82,5	91,3
October	96,7	96,7	98,5	95,2	97,7	87,8	
November	98,6	98,5	101,9	96,0	89,9	88,6	
December	101,3	95,1	97,7	96,0	89,3	87,3	

Table 4 – Indices of the physical volume of mining production according to mineral groups and minerals

Mineral groups and minerals	Base : 2005=100					% change between September 2009 and September 2010
	Weights 2005	Average for 2009	September 2009	August 2010 1/	September 2010 1/	
Gold	17,2	67,1	72,8	71,2	69,4	-4,7
Iron ore	5,3	139,9	142,8	141,6	140,3	-1,8
Chromium ore	1,3	91,6	112,7	140,3	148,9	32,1
Copper	1,8	89,4	74,1	80,1	76,8	3,6
Manganese ore	1,5	99,3	114,7	172,1	150,9	31,6
PGMs	27,0	89,2	81,8	105,9	119,1	45,6
Nickel	2,8	81,6	75,3	101,6	93,0	23,5
Other metallic minerals	2,8	85,3	85,1	98,1	90,0	5,8
Diamonds	7,6	39,2	62,9	65,3	67,9	7,9
Coal	24,9	102,3	112,5	112,8	110,4	-1,9
Building materials	2,1	100,2	113,8	98,4	98,0	-13,9
Other non-metallic minerals	5,7	63,1	66,4	74,4	72,2	8,7
Total	100,0	86,2	90,2	99,1	101,1	12,1

1/ Preliminary.

Table 5 – Seasonally adjusted indices of the physical volume of mining production according to mineral groups and minerals

Mineral groups and minerals	Base : 2005=100				% change between August and September 2010
	Weights 2005	September 2009	August 2010	September 2010	
Gold	17,2	66,3	67,9	63,2	-6,9
Iron ore	5,3	140,8	139,2	138,6	-0,4
Chromium ore	1,3	99,2	127,3	129,6	1,8
Copper	1,8	79,6	81,5	83,4	2,3
Manganese ore	1,5	108,1	154,3	141,2	-8,5
PGMs	27,0	68,2	102,5	98,5	-3,9
Nickel	2,8	76,7	91,1	95,2	4,5
Other metallic minerals	2,8	85,7	94,6	90,9	-3,9
Diamonds	7,6	49,0	57,5	52,6	-8,5
Coal	24,9	107,7	105,3	105,2	-0,1
Building materials	2,1	105,0	90,7	90,4	-0,3
Other non-metallic minerals	5,7	62,9	71,3	68,6	-3,8
Total	100,0	82,5	93,9	91,3	-2,8

Table 6 – Annual percentage change in the three-monthly physical volume of mining production according to mineral groups and minerals

Mineral groups and minerals	Base : 2005=100					
	Weights 2005	July to September 2009	July to September 2010	% change between July to September 2009 and July to September 2010	Difference between July to September 2009 and July to September 2010	Contribution (% points) to the % change in total mining production 1/
Gold	17,2	68,6	67,9	-1,0	-0,7	-0,1
Iron ore	5,3	146,7	143,0	-2,5	-3,7	-0,2
Chromium ore	1,3	106,5	143,7	34,9	37,2	0,5
Copper	1,8	86,2	77,8	-9,7	-8,4	-0,2
Manganese ore	1,5	99,3	154,1	55,2	54,8	0,9
PGMs	27,0	88,3	106,9	21,1	18,6	5,5
Nickel	2,8	85,5	92,8	8,5	7,3	0,2
Other metallic minerals	2,8	86,3	94,3	9,3	8,0	0,2
Diamonds	7,6	49,4	64,1	29,8	14,7	1,2
Coal	24,9	112,2	111,5	-0,6	-0,7	-0,2
Building materials	2,1	111,5	98,1	-12,0	-13,4	-0,3
Other non-metallic minerals	5,7	69,9	73,5	5,2	3,6	0,2
Total	100,0	90,7	97,8	7,8	7,1	7,8

1/ The contribution (percentage points) of a mineral or mineral group to the percentage change in the total mining production is calculated by multiplying the difference in the index for the mineral or mineral group by the weight of the mineral or mineral group and then dividing by the previous period's total index. Figures have been rounded off.

Table 7 – Annual percentage change in the cumulative physical volume of mining production according to mineral groups and minerals

Mineral groups and minerals	Base : 2005=100					
	Weights 2005	January to September 2009	January to September 2010	% change between January to September 2009 and January to September 2010	Difference between January to September 2009 and January to September 2010	Contribution (% points) to the % change in total mining production 2/
Gold	17,2	67,4	63,4	-5,9	-4,0	-0,8
Iron ore	5,3	135,5	148,5	9,6	13,0	0,8
Chromium ore	1,3	86,1	130,8	51,9	44,7	0,7
Copper	1,8	95,5	75,5	-20,9	-20,0	-0,4
Manganese ore	1,5	90,3	145,6	61,2	55,3	1,0
PGMs	27,0	85,9	89,4	4,1	3,5	1,1
Nickel	2,8	80,5	93,8	16,5	13,3	0,4
Other metallic minerals	2,8	85,0	92,8	9,2	7,8	0,3
Diamonds	7,6	36,5	56,9	55,9	20,4	1,8
Coal	24,9	102,5	102,7	0,2	0,2	0,1
Building materials	2,1	101,2	96,4	-4,7	-4,8	-0,1
Other non-metallic minerals	5,7	66,1	69,0	4,4	2,9	0,2
Total	100,0	85,0	89,3	5,1	4,3	5,1

2/ The contribution (percentage points) of a mineral or mineral group to the percentage change in the total mining production is calculated by multiplying the difference in the index for the mineral or mineral group by the weight of the mineral or mineral group and then dividing by the previous period's total index. Figures have been rounded off.

Table 8 – Total value of mineral sales (R million): 2004 – 2010

Month	2004	2005	2006	2007	2008	2009 *	2010 1/
January	9 820,5	9 587,4	11 755,1	15 692,9	17 442,2	17 263,9	19 103,2
February	9 576,1	9 383,8	12 680,8	17 928,6	21 737,4	19 906,3	20 256,2
March	10 396,0	11 477,1	14 179,9	18 555,2	25 894,1	22 093,9	23 525,1
April	9 789,3	11 034,0	13 042,6	17 447,8	25 520,6	20 733,6	23 463,3
May	10 373,3	12 239,8	14 046,8	19 841,6	26 737,6	18 463,5	25 328,0
June	10 856,0	13 360,1	17 809,8	19 033,2	29 881,0	20 337,3	25 750,9
July	10 844,2	12 001,8	17 614,8	17 449,4	27 164,7	20 019,7	25 202,7
August	9 841,7	11 687,6	17 339,2	17 890,4	27 064,3	20 144,0	25 682,8
September	11 693,2	13 524,1	20 586,6	19 619,7	27 830,7	20 737,7	
October	10 466,3	12 074,8	18 031,0	18 713,7	27 191,4	19 912,0	
November	10 815,6	12 453,2	18 918,2	20 674,4	23 991,0	20 134,0	
December	10 585,6	13 994,2	17 584,7	21 590,8	20 259,5	21 593,2	
Year	125 057,8	142 817,9	193 589,5	224 437,7	300 714,5	241 339,1	

1/ Preliminary.

* Revised.

Table 9 – Annual percentage change in the total value of mineral sales: 2004 – 2010

Month	Percentage change 2/						
	2004	2005	2006	2007	2008	2009	2010
January	-0,5	-2,4	22,6	33,5	11,1	-1,0	10,7
February	-6,5	-2,0	35,1	41,4	21,2	-8,4	1,8
March	5,8	10,4	23,5	30,9	39,6	-14,7	6,5
April	5,3	12,7	18,2	33,8	46,3	-18,8	13,2
May	13,9	18,0	14,8	41,3	34,8	-30,9	37,2
June	11,4	23,1	33,3	6,9	57,0	-31,9	26,6
July	4,2	10,7	46,8	-0,9	55,7	-26,3	25,9
August	2,4	18,8	48,4	3,2	51,3	-25,6	27,5
September	16,8	15,7	52,2	-4,7	41,9	-25,5	
October	4,8	15,4	49,3	3,8	45,3	-26,8	
November	13,4	15,1	51,9	9,3	16,0	-16,1	
December	6,9	32,2	25,7	22,8	-6,2	6,6	
Year	6,4	14,2	35,5	15,9	34,0	-19,7	

2/ The annual percentage change is the change in the value of mineral sales of the relevant month of the current year compared with the corresponding month of the previous year expressed as a percentage.

Table 10 – Seasonally adjusted total value of mineral sales (R million): 2004 – 2010

Month	2004	2005	2006	2007	2008	2009	2010
January	10 313,8	10 519,2	13 206,6	18 303,7	20 862,0	20 512,4	22 974,3
February	9 939,9	9 889,6	13 582,6	19 371,7	23 553,0	20 988,8	21 953,3
March	10 444,1	11 323,6	13 862,4	18 031,5	24 916,9	21 061,5	22 604,7
April	10 397,8	11 660,6	13 825,4	18 464,6	26 411,4	21 452,9	23 795,8
May	10 357,7	12 060,6	13 800,2	19 322,5	25 930,5	17 938,0	24 608,8
June	10 336,0	12 587,7	16 500,3	17 473,8	27 355,5	19 111,7	24 303,5
July	10 764,6	11 810,5	17 082,4	17 069,5	26 989,3	19 765,7	24 907,1
August	9 906,3	11 877,3	17 621,1	17 833,0	26 423,3	20 423,7	25 772,9
September	10 816,4	12 396,6	18 903,4	18 147,2	26 247,7	19 822,3	
October	10 319,2	11 991,8	18 170,8	18 849,9	27 099,4	19 583,8	
November	10 772,1	12 264,5	18 807,1	20 464,3	23 489,4	19 831,9	
December	10 396,2	13 687,8	17 271,5	21 297,6	19 939,4	21 406,4	

Table 11 – Estimated actual value of mineral sales according to mineral groups and minerals

Mineral groups and minerals	Value of sales for 2009	Value of sales for August 2009	Value of sales for July 2010 1/	Value of sales for August 2010 1/	% change between August 2009 and August 2010
	R million	R million	R million	R million	
Gold	48 695,5	3 877,1	4 819,7	4 873,1	25,7
Iron ore	27 131,6	2 561,0	3 605,8	2 713,2	5,9
Chromium ore	3 262,1	292,2	485,9	531,9	82,0
Copper	3 858,6	242,9	364,3	337,2	38,8
Manganese ore	5 586,6	271,7	735,6	979,5	260,5
PGMs	57 782,1	4 772,0	6 197,9	7 507,5	57,3
Nickel	4 201,2	514,2	354,4	481,8	-6,3
Other metallic minerals	4 494,7	310,3	462,5	571,3	84,1
Coal	*65 404,8	5 583,7	6 711,8	5 826,2	4,3
Building materials	*6 893,0	615,8	604,9	614,5	-0,2
Other non-metallic minerals	*14 028,2	1 102,9	859,8	1 246,6	13,0
Total	241 339,1	20 144,0	25 202,7	25 682,8	27,5

1/ Preliminary.

* Revised

Table 12 – Seasonally adjusted value of mineral sales according to mineral groups and minerals

Mineral groups and minerals	Value of sales for August 2009	Value of sales for July 2010	Value of sales for August 2010	% change between July and August 2010
	R million	R million	R million	
Gold	4 182,3	4 732,5	5 293,5	11,9
Iron ore	3 218,0	3 662,9	3 497,9	-4,5
Chromium ore	260,4	437,1	469,8	7,5
Copper	229,9	292,5	324,7	11,0
Manganese ore	233,7	818,0	830,8	1,6
PGMs	4 359,1	6 114,3	6 826,0	11,6
Nickel	467,7	372,1	427,9	15,0
Other metallic minerals	334,8	544,2	606,5	11,4
Coal	5 309,3	6 337,2	5 516,8	-12,9
Building materials	571,3	566,3	572,4	1,1
Other non-metallic minerals	1 257,2	1 030,0	1 406,6	36,6
Total	20 423,7	24 907,1	25 772,9	3,5

Table 13 – Annual percentage change in the three-monthly value of mineral sales according to mineral groups and minerals

Mineral groups and minerals	% contribution to total mineral sales during June to August 2009	Value of sales for June to August 2009	Value of sales for June to August 2010	% change between June to August 2009 and June to August 2010	Contribution to the % change in the total value of mineral sales 1/	Difference in sales between June to August 2009 and June to August 2010
		R million	R million		% points	R million
Gold	19,6	11 886,1	14 696,2	23,6	4,6	2 810,1
Iron ore	11,5	6 978,8	10 344,5	48,2	5,5	3 365,7
Chromium ore	1,5	917,7	1 402,5	52,8	0,8	484,8
Copper	1,6	979,0	1 044,5	6,7	0,1	65,5
Manganese ore	1,7	1 013,6	2 664,0	162,8	2,8	1 650,4
PGMs	23,6	14 296,3	19 690,5	37,7	8,9	5 394,2
Nickel	2,4	1 452,1	1 478,1	1,8	0,0	26,0
Other metallic minerals	2,1	1 290,8	1 845,7	43,0	0,9	554,9
Coal	27,4	16 573,5	18 141,8	9,5	2,6	1 568,3
Building materials	3,0	1 800,6	1 804,9	0,2	0,0	4,3
Other non-metallic minerals	5,5	3 312,2	3 523,8	6,4	0,4	211,6
Total	100,0	60 501,0	76 636,4	26,7	26,7	16 135,4

1/ The contribution (percentage points) to the percentage change in sales is calculated by multiplying the percentage change of each mineral with the percentage contribution to total mineral sales during June to August 2009, divided by 100. Figures have been rounded off.

Table 14 – Annual percentage change in the cumulative value of mineral sales according to mineral groups and minerals

Mineral groups and minerals	% contribution to total mineral sales during January to August 2009	Value of sales for January to August 2009	Value of sales for January to August 2010	% change between January to August 2009 and January to August 2010	Contribution to the % change in the total value of mineral sales 2/	Difference in sales between January to August 2009 and January to August 2010
		R million	R million		% points	R million
Gold	19,9	31 635,6	33 557,5	6,1	1,2	1 921,9
Iron ore	12,4	19 697,3	25 761,2	30,8	3,8	6 063,9
Chromium ore	1,3	2 080,4	3 494,5	68,0	0,9	1 414,1
Copper	1,5	2 381,0	2 711,3	13,9	0,2	330,3
Manganese ore	2,1	3 276,3	6 661,0	103,3	2,2	3 384,7
PGMs	23,0	36 546,5	47 285,9	29,4	6,8	10 739,4
Nickel	1,8	2 835,5	3 939,4	38,9	0,7	1 103,9
Other metallic minerals	1,6	2 578,3	4 679,4	81,5	1,3	2 101,1
Coal	27,3	43 408,7	45 187,7	4,1	1,1	1 779,0
Building materials	2,8	4 491,5	4 702,8	4,7	0,1	211,3
Other non-metallic minerals	6,3	10 030,5	10 331,6	3,0	0,2	301,1
Total	100,0	158 962,2	188 312,2	18,5	18,5	29 350,0

2/ The contribution (percentage points) to the percentage change in sales is calculated by multiplying the percentage change of each mineral with the percentage contribution to total mineral sales during January to August 2009, divided by 100. Figures have been rounded off.

Explanatory notes

Introduction	1	Statistics South Africa (Stats SA) publishes monthly information regarding the mining industry on the basis of mining production figures and mineral sales furnished by the Department of Mineral Resources (DMR). This statistical release contains detailed information regarding indices of the physical volume of mining production and the total value of mineral sales according to mining mineral groups and minerals on a monthly basis.
	2	In accordance with international practice, the indices have to be re-based every five years to a new base year. The base year of the index of the physical volume of mining production is currently 2005=100. Both actual and seasonally adjusted figures are presented.
	3	Due to mining production figures being available earlier than mineral sales figures, mining production indices are published one month earlier than mineral sales.
	4	The value of mineral sales is calculated, in general, on a free-on-rail/free-on-board basis.
	5	In order to improve timeliness, some information for the current month may have been estimated due to late response. These estimates will be revised in future statistical release(s) as soon as more up-to-date information is available.
Purpose of the survey	6	The monthly mining production and sales survey is conducted by the Department of Mineral Resources (DMR), covering all mining establishments operating in the South African economy. The results of this survey are used to calculate physical volume of mining production indices in order to estimate the gross domestic product (GDP) and its components, which in turn are used to develop and monitor government policy.
Scope of the survey	7	This survey covers mining establishments conducting activities regarding <ul style="list-style-type: none"> • The extracting, dressing and beneficiating of minerals occurring naturally, for example solids such as coal and ores.
Classification	8	The 1993 edition of the <i>Standard Industrial Classification of all Economic Activities (SIC)</i> , Fifth Edition, Report No. 09-90-02, was used to classify the statistical units in the survey. The SIC is based on the 1990 <i>International Standard Industrial Classification of all Economic Activities (ISIC)</i> with suitable adaptations for local conditions. Each statistical unit is classified to an industry which reflects the predominant activity of the establishment. Statistics in this publication are presented according to mineral groups and minerals.
Statistical unit	9	The basic statistical unit for the collection of information is the mining establishment. An establishment is the smallest economic unit that functions as a separate entity. Each statistical unit is classified to an industry (see paragraph 8).
Weighting	10	The weights, which are used to aggregate minerals to mineral groups and mineral groups to total mining, are based on the value of production derived from detailed information for 2005 supplied by the Department of Mineral Resources (DMR).

Seasonal adjustment	11	<p>Seasonally adjusted estimates of all items are generated each month, using the X-11 Seasonal Adjustment Program developed by US Bureau of the Census Economic Research and Analyses Division, 1968. Seasonal adjustment is a means of removing the estimated effects of normal seasonal variation from the series so that the effects of other influences on the series can be more clearly recognised. Seasonal adjustment does not aim to remove irregular or non-seasonal influences which may be present in any particular month.</p> <p>Influences that are volatile or unsystematic can still make it difficult to interpret the movement of the series even after adjustment for seasonal variations. This means the month-to-month movements of seasonally adjusted estimates may not be reliable indicators of trend behaviour.</p>																
Reliability of estimates	12	<p>Figures for the latest 12 months are preliminary.</p>																
Historical data	13	<p>More comprehensive detail on the method of calculation and historical data in respect of the production indices according to mining mineral groups for the period January 1998 to September 2009 is available in the statistical release P2041, entitled <i>Mining: Production and sales (Preliminary)</i>, published on 12 November 2009 and is available on the Stats SA website: www.statssa.gov.za</p>																
Related publications	14	<p>Users may also wish to refer to the following publications which are available from Stats SA -</p> <ul style="list-style-type: none"> • <i>Bulletin of Statistics.</i> • <i>SA Statistics.</i> 																
Rounding-off of figures	15	<p>The figures in the tables have, where necessary, been rounded off to the nearest digit shown. There may, therefore, be slight discrepancies between the sums of the constituent items and the totals shown.</p>																
Symbols and abbreviations	16	<table border="0"> <tr> <td>DMR</td> <td>Department of Mineral Resources</td> </tr> <tr> <td>GDP</td> <td>Gross domestic product</td> </tr> <tr> <td>ISIC</td> <td>International Standard Industrial Classification</td> </tr> <tr> <td>PGMs</td> <td>Platinum group metals</td> </tr> <tr> <td>SIC</td> <td>Standard Industrial Classification of all Economic Activities</td> </tr> <tr> <td>SNA</td> <td>System of National Accounts</td> </tr> <tr> <td>Stats SA</td> <td>Statistics South Africa</td> </tr> <tr> <td>*</td> <td>Revised</td> </tr> </table>	DMR	Department of Mineral Resources	GDP	Gross domestic product	ISIC	International Standard Industrial Classification	PGMs	Platinum group metals	SIC	Standard Industrial Classification of all Economic Activities	SNA	System of National Accounts	Stats SA	Statistics South Africa	*	Revised
DMR	Department of Mineral Resources																	
GDP	Gross domestic product																	
ISIC	International Standard Industrial Classification																	
PGMs	Platinum group metals																	
SIC	Standard Industrial Classification of all Economic Activities																	
SNA	System of National Accounts																	
Stats SA	Statistics South Africa																	
*	Revised																	

Glossary

Free-on-rail	Free-on-rail relates to goods sold on the local market where no railage or road transport costs are involved.
Free-on-board	Free-on-board relates to goods destined for the export market. Railage, road transport and docking charges are involved but no charges are made for the transport by sea.
Index of physical volume of mining production	The index of physical volume of mining production or a production index is a statistical measure of the change in the volume of production. The production index of a mineral group is the ratio between the volume of production of a mineral group in a given period and the volume of production of the same mineral group in the base period. The current base period is 2005. The production in the base period is set at 100.
Industry	An industry consists of a group of establishments engaged in the same or similar kinds of economic activity. Industries are defined in the <i>System of National Accounts (SNA)</i> in the same way as in the <i>Standard Industrial Classification (SIC) of all Economic Activities</i> , Fifth Edition of January 1993.
PGMs – Platinum group metals	Platinum group metals include platinum; iridium; osmiridium; palladium; rhodium; ruthenium and osmium.
Sales	Sales are the total value of sales and transfers-out of goods mined by the mining establishments and the amounts received for installation, erection or assembly or other services rendered.
Weight	The weight of a mineral group is the ratio of the sales of a mineral group to the total sales of the mining industry. The weight of a mineral group reflects the importance of the mineral group in the total mining industry. The weights change over time due to quality changes and changes in relative prices. New weights need to be calculated from time to time. The current weights that are being used are based on the total value of mineral sales for 2005.

General information

Stats SA publishes approximately 300 different statistical releases each year. It is not economically viable to produce them in more than one of South Africa's eleven official languages. Since the releases are used extensively, not only locally but also by international economic and social-scientific communities, Stats SA releases are published in English only.

Stats SA has copyright on this publication. Users may apply the information as they wish, provided that they acknowledge Stats SA as the source of the basic data wherever they process, apply, utilise, publish or distribute the data: and also that they specify that the relevant application and analysis (where applicable) result from their own processing of the data.

Advanced release calendar

An advanced release calendar is disseminated on www.statssa.gov.za

Stats SA products

A complete set of Stats SA publications is available at the Stats SA Library and the following libraries:

National Library of South Africa, Pretoria Division
National Library of South Africa, Cape Town Division
Natal Society Library, Pietermaritzburg
Library of Parliament, Cape Town
Bloemfontein Public Library
Johannesburg Public Library
Eastern Cape Library Services, King William's Town
Central Regional Library, Polokwane
Central Reference Library, Nelspruit
Central Reference Collection, Kimberley
Central Reference Library, Mmabatho

Stats SA also provides a subscription service.

Electronic services

A large range of data is available via on-line services, CD and computer printouts. For more details about our electronic data services, contact (012) 310 8600/8390/8351/8496/4892/8095.

You can visit us on the Internet at: www.statssa.gov.za

General enquiries

Telephone number (012) 444 3734 (technical inquiries)
(012) 310 2965/ 8220 (technical enquiries)
(012) 310 8358 (orders)
(012) 310 4883/ 4885/ 8018 (library)

Fax number: (012) 310 8664 (technical enquiries)

Email: martin.kohler@dme.gov.za (technical enquiries)
juan-pierret@statssa.gov.za (technical enquiries)
info@statssa.gov.za (user information services)
magdaj@statssa.gov.za (orders)

Postal address: Private Bag X44, Pretoria, 0001

Produced by Stats SA