



**Statistics
South Africa**

Preferred supplier of quality statistics



Statistical release

P2041

Mining: Production and sales (preliminary)

September 2008

**Embargoed until:
13 November 2008
10:00**

Enquiries:

User Information Services
Tel: (012) 310 8600 / 4892 /8390

Forthcoming issue:

October 2008

Expected release date:

9 December 2008

Contents

SUMMARY OF FINDINGS: MINING PRODUCTION AND MINERAL SALES 2

Detailed results: Tables 7

Table 1 – Index of the physical volume of mining production including gold 7

Table 2 – Index of the physical volume of mining production excluding gold 7

Table 3 – Indices of physical volume of mining production according to mining divisions, mineral groups and minerals 8

Table 4 – Contribution of the mining divisions to the total mining production (seasonally adjusted) 8

Table 5 – Total value of mineral sales including gold (R million) 9

Table 6 – Total value of mineral sales excluding gold (R million) 9

Table 7 – Total value of mineral sales according to mining divisions, mineral groups and minerals (R million) 10

Table 8 – Contribution of the mining divisions to the total value of mineral sales 10

Table 9 – Percentage change in the indices of mining production between the current month and the corresponding month of the previous year 11

Table 10 – Percentage change in the indices of mining production between the current quarter and the corresponding quarter of the previous year 11

Table 11 – Percentage change in the seasonally adjusted indices of mining production between the current month and the previous month 11

Table 12 – Percentage change in the seasonally adjusted indices of mining production between the current quarter and the previous quarter 11

Table 13 – Percentage change in the actual value of mineral sales between the current month and the corresponding month of the previous year 12

Table 14 – Percentage change in the actual value of mineral sales between the current quarter and the corresponding quarter of the previous year 12

Table 15 – Percentage change in the seasonally adjusted value of mineral sales between the current month and the previous month 12

Table 16 – Percentage change in the seasonally adjusted value of mineral sales between the current quarter and the previous quarter 12

Explanatory notes 13

Glossary 15

General information 16

SUMMARY OF FINDINGS: MINING PRODUCTION AND MINERAL SALES

Key findings regarding mining production as at the end of September 2008

Seasonally adjusted mining production decreases

The total mining production for the third quarter of 2008, after seasonal adjustment, decreased by 3,5% compared with the second quarter of 2008. The main contributors to the 3,5% decrease were PGMs (-1,9 percentage points), gold (-1,0 percentage point), diamonds (-0,8 of a percentage point) and coal (-0,5 of a percentage point) (see Table 4).

The total mining production for the third quarter of 2008 decreased by 7,1% compared with the third quarter of 2007. The actual total mining production for September 2008 decreased by 3,5% compared with September 2007, reflected by both gold and non-gold minerals production decreasing by 17,7% and 1,2% respectively (see Table A).

Key figures regarding mining production as at the end of September 2008

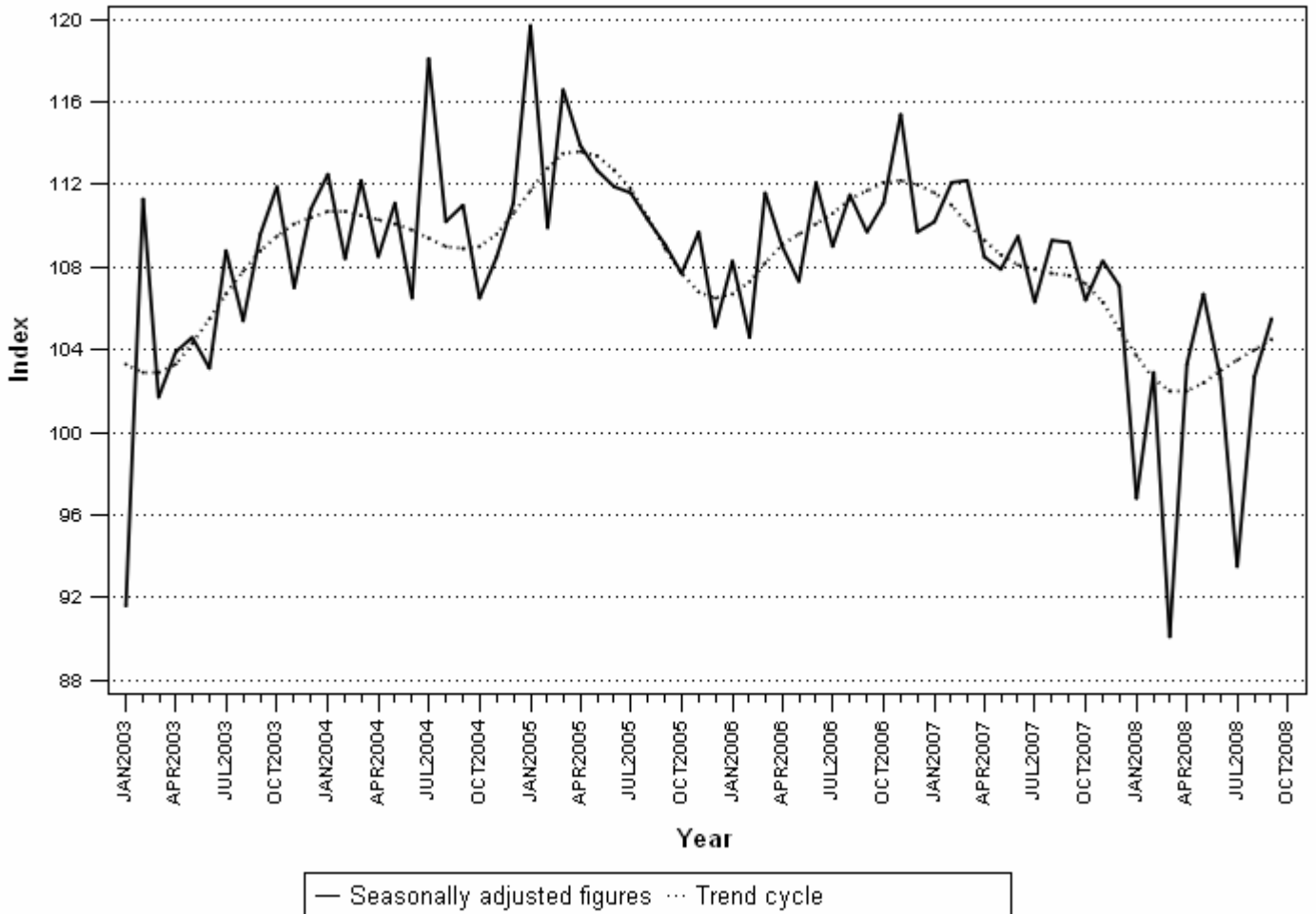
Table A – Selected key figures regarding mining production for September 2008

Actual estimates	Base : 2000=100		
	September 2008	% change between September 2007 and September 2008	% change between July to September 2007 and July to September 2008
Index of the physical volume of mining production			
Gold	52,0	-17,7	-19,1
Non-gold	135,7	-1,2	-5,0
Total	114,2	-3,5	-7,1

Shorter term seasonally adjusted estimates	Base : 2000=100		
	September 2008	% change between August and September 2008	% change between April to June 2008 and July to September 2008
Index of the physical volume of mining production			
Gold	47,9	5,0	-8,1
Non-gold	125,4	2,4	-2,9
Total	105,5	2,7	-3,5

Figure 1 shows the seasonally adjusted figures and trend series for the index of total mining production between January 2003 and September 2008.

Figure 1 – Monthly indices of physical volume of total mining production (Base: 2000=100)



Key findings regarding mineral sales as at the end of August 2008

Seasonally adjusted mineral sales increase

The total seasonally adjusted value of mineral sales at current prices for the three months ended August 2008 reflected an increase of 3,7% compared with the previous three months. This increase of 3,7% (R2 880,3 million) can be attributed to an increase of 5,8% (R3 874,7 million) in the sale of non-gold minerals (see Table B and Table 16).

The actual estimated total value of mineral sales at current prices for the three months ended August 2008 increased by 53,5% compared with the three months ended August 2007. The major contributors to this increase of 53,5%, year-on-year, were coal (16,0 percentage points or R8 714,7 million), PGMs (15,7 percentage points or R8 552,2 million), and manganese ore (10,0 percentage points or R5 524,1 million) (see Table 8).

Key figures regarding mineral sales as at the end of August 2008

Table B – Selected key figures regarding mineral sales for August 2008

Actual estimates	August 2008	% change between August 2007 and August 2008	% change between June to August 2007 and June to August 2008
	R million		
Mineral sales			
Gold	3 097,7	-4,5	14,1
Non-gold	23 792,0	62,4	62,2
Total	26 889,8	50,3	53,5

Shorter term seasonally adjusted estimates	August 2008	% change between July and August 2008	% change between March to May and June to August 2008
	R million		
Mineral sales			
Gold	3 276,5	-15,3	-8,4
Non-gold	24 178,4	6,4	5,8
Total	27 454,9	3,3	3,7

Figure 2 shows the seasonally adjusted figures and trend series of the total value of mineral sales between January 2003 and August 2008.

Figure 2 – Total value of mineral sales

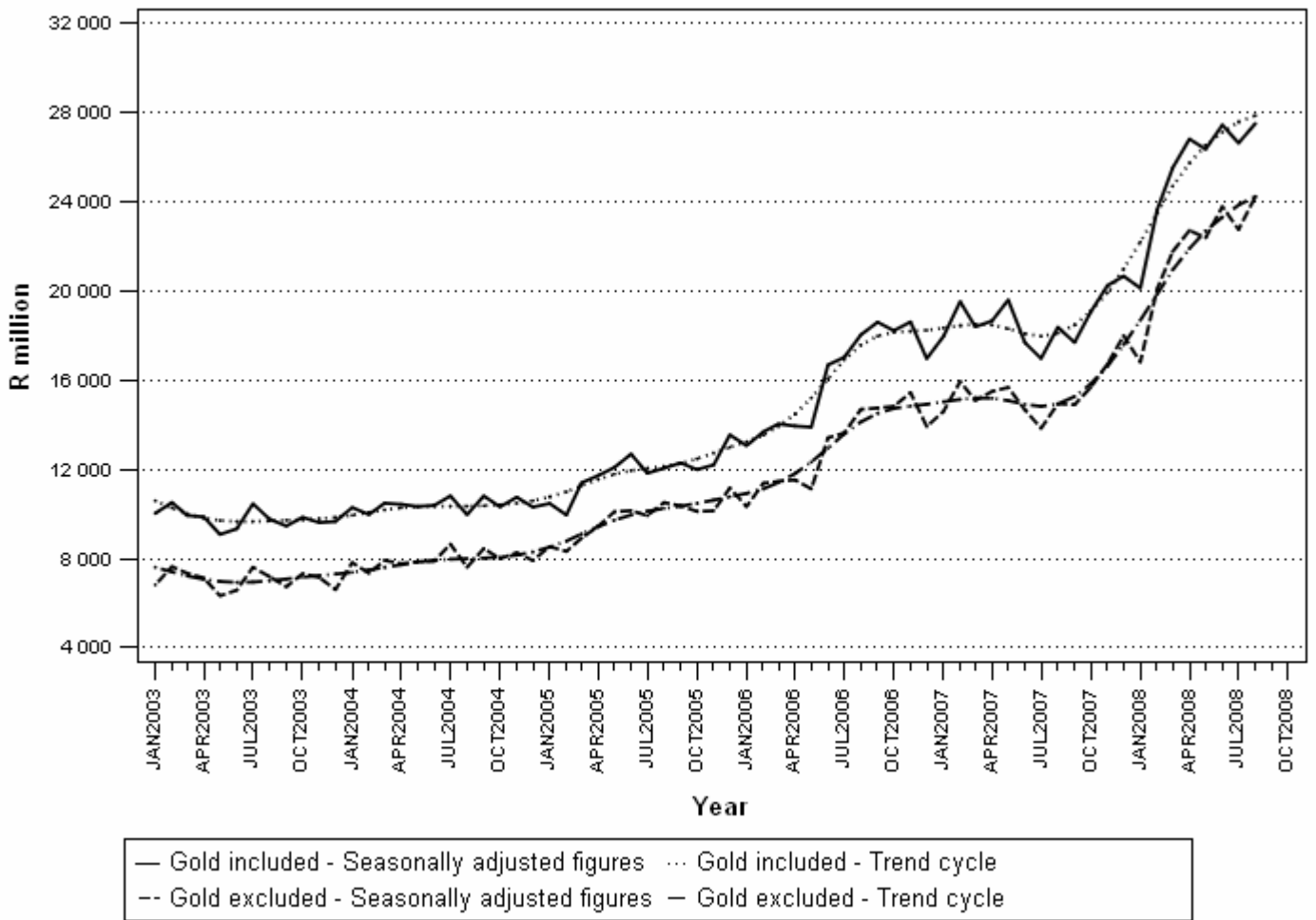
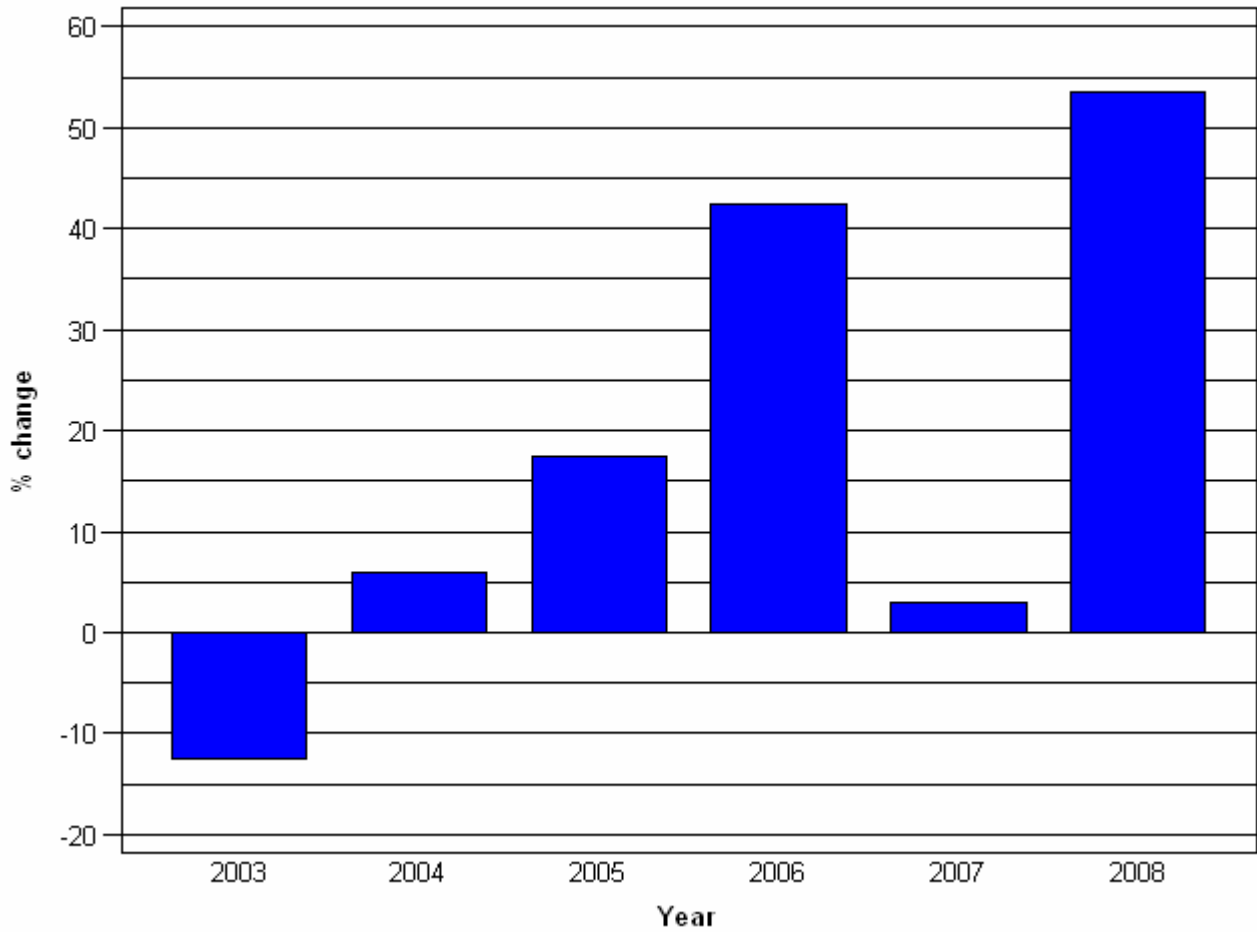


Figure 3 shows the 53,5% annual growth rate in the value of mineral sales for the three months ended August 2008. The increase for 2008 represents the highest growth rate compared to the other years for the same period since 2003.

Figure 3 – Comparison of the last six years for the total value of mineral sales, including gold, for the three months ended August compared with the three months ended August of the previous year



P J Lehohla
Statistician-General

Detailed results: Tables

Table 1 – Index of the physical volume of mining production including gold

		Base : 2000=100						
		2002	2003	2004	2005	2006	2007	1/ 2008
Actual indices	January	89,0	85,1	100,7	107,9	96,9	97,8	85,6
	February	94,2	101,7	97,8	98,6	93,6	99,1	90,5
	March	99,1	101,8	112,9	119,9	114,3	115,0	92,0
	April	102,0	101,0	105,0	110,2	105,2	104,7	99,3
	May	102,9	107,1	113,0	115,2	109,0	109,8	108,1
	June	104,1	108,6	111,1	116,8	117,6	115,5	108,5
	July	99,0	110,7	119,5	113,1	110,2	107,1	94,4
	August	107,2	109,1	114,3	114,8	116,3	113,9	106,8
	September	108,1	114,6	117,4	116,7	115,2	118,3	114,2
	October	106,7	114,5	108,2	108,2	110,9	106,0	
	November	107,5	108,6	110,1	111,4	117,3	110,6	
	December	107,0	113,5	113,3	107,4	113,1	109,8	
	Year	102,2	106,4	110,3	111,7	110,0	109,0	
Seasonally adjusted indices	January	97,5	91,6	112,5	119,7	108,3	110,2	96,8
	February	100,7	111,3	108,4	109,9	104,6	112,1	102,9
	March	99,3	101,7	112,2	116,6	111,6	112,2	90,1
	April	103,1	103,9	108,5	113,9	109,0	108,5	103,3
	May	102,1	104,6	111,1	112,7	107,3	107,9	106,7
	June	99,8	103,1	106,5	111,9	112,1	109,5	102,6
	July	98,5	108,8	118,1	111,6	109,0	106,3	93,5
	August	104,1	105,4	110,2	110,3	111,5	109,3	102,7
	September	104,6	109,6	111,0	109,1	109,7	109,2	105,5
	October	103,4	111,9	106,5	107,7	111,1	106,4	
	November	105,3	107,0	108,5	109,7	115,4	108,3	
	December	104,4	110,8	111,1	105,1	109,7	107,1	

Table 2 – Index of the physical volume of mining production excluding gold

		Base : 2000=100						
		2002	2003	2004	2005	2006	2007	1/ 2008
Actual indices	January	89,6	85,7	110,0	121,6	110,1	112,4	99,3
	February	95,8	107,3	104,0	108,7	104,1	111,7	106,4
	March	101,0	106,2	123,6	136,2	130,9	134,4	105,7
	April	105,3	106,3	115,0	127,0	119,7	121,6	116,6
	May	107,0	114,7	124,9	131,3	126,1	127,4	127,8
	June	107,3	116,4	121,1	132,3	135,7	134,2	127,4
	July	102,4	118,8	133,1	129,2	127,1	124,0	110,2
	August	111,2	116,3	125,5	132,2	134,0	131,8	127,3
	September	111,4	122,9	130,0	132,4	131,7	137,3	135,7
	October	111,9	124,2	119,7	122,3	127,7	122,3	
	November	113,3	116,2	121,3	126,2	136,2	129,7	
	December	111,2	123,3	127,0	120,0	131,9	128,2	
	Year	105,6	113,2	121,3	126,6	126,3	126,3	
Seasonally adjusted indices	January	98,0	91,5	123,4	135,0	123,4	126,8	112,5
	February	103,5	119,2	117,3	123,0	117,9	128,3	122,4
	March	101,9	106,5	123,0	132,0	127,3	130,8	103,2
	April	105,7	109,1	118,6	130,9	123,5	125,7	121,0
	May	105,0	110,5	121,7	127,6	123,4	124,6	125,7
	June	102,6	110,0	115,9	126,6	129,2	126,9	120,2
	July	101,0	115,7	131,0	127,0	125,1	122,5	108,6
	August	108,0	112,4	121,0	127,0	128,6	126,5	122,5
	September	108,5	118,0	123,1	123,9	125,9	126,7	125,4
	October	107,6	120,8	117,5	121,9	128,2	123,2	
	November	110,9	114,6	119,8	124,5	134,0	127,0	
	December	108,8	120,5	124,6	117,6	127,9	125,0	

1/ Preliminary.

Table 3 – Indices of physical volume of mining production according to mining divisions, mineral groups and minerals

	Base : 2000=100							
	Weights	Actual indices				Seasonally adjusted indices		
		2007	1/ 2008			2007	2008	
			Sep	Aug	Sep		Sep	Aug
Total, gold included	100,0	109,0	118,3	106,8	114,2	109,2	102,7	105,5
Total, gold excluded	74,3	126,3	137,3	127,3	135,7	126,7	122,5	125,4
Gold	25,7	58,9	63,2	47,6	52,0	58,4	45,6	47,9
Iron ore	3,1	124,4	126,4	162,0	160,0	127,3	164,0	160,4
Chromium	1,1	145,1	148,4	154,4	155,6	144,9	147,2	151,7
Copper	1,6	86,6	87,6	67,6	70,4	85,3	65,8	68,4
Manganese ore	1,3	162,9	152,0	208,0	204,8	158,0	204,8	212,2
PGMs	27,6	147,0	172,4	144,0	169,2	151,4	138,4	148,0
Nickel	2,0	102,4	100,8	90,0	109,2	98,3	91,3	105,7
Other metallic minerals	2,9	83,1	86,8	90,8	88,0	85,2	87,0	86,5
Diamonds	8,3	137,4	156,0	126,8	124,0	139,4	121,0	110,7
Coal	20,0	110,3	108,4	115,6	112,8	106,9	110,6	111,7
Building materials	2,6	* 135,6	* 134,8	136,0	134,0	126,0	126,4	125,5
Other non-metallic minerals	3,8	74,9	75,6	71,6	68,4	71,7	70,7	65,6

1/ Preliminary.

* Revised.

Table 4 – Contribution of the mining divisions to the total mining production (seasonally adjusted)

		Base : 2000=100			
		Percentage contribution to the total mining production using the weights according to the value of production in the base year	Average seasonally adjusted production index for July to September 2008	Quarterly percentage change July to September 2008 compared with the preceding three months	Contribution (percentage points) to the percentage change in the total mining production 1/
Gold		25,7	47,7	-8,1	-1,0
Non-gold minerals	Iron ore	3,1	161,0	15,9	0,7
	Chromium	1,1	149,4	-1,7	0,0
	Copper	1,6	66,6	-14,3	-0,2
	Manganese ore	1,3	205,7	11,3	0,3
	PGMs	27,6	127,8	-5,3	-1,9
	Nickel	2,0	92,9	14,2	0,2
	Other metallic minerals	2,9	86,2	1,9	0,0
	Diamonds	8,3	120,7	-7,5	-0,8
	Coal	20,0	111,6	-2,4	-0,5
	Building materials	2,6	128,3	-7,3	-0,3
	Other non-metallic minerals	3,8	70,4	-0,1	0,0
Total non-gold minerals		74,3	118,8	-2,9	-2,5
Total minerals		100,0	100,6	-3,5	-3,5

1/ The quarterly contribution of a commodity or commodity group to the total seasonally adjusted mining production is calculated by multiplying the weight of the commodity or commodity group with the change in the index for the commodity or commodity group and dividing by the previous period index total. Figures have been rounded off.

Table 5 – Total value of mineral sales including gold (R million)

		2002	2003	2004	2005	2006	* 2007	1/ 2008
Actual values	January	11 387,0	9 868,8	9 820,5	9 587,4	11 755,1	15 692,9	17 451,9
	February	10 634,4	10 236,5	9 576,1	9 383,8	12 680,8	17 928,6	21 715,8
	March	11 639,2	9 829,3	10 396,0	11 477,1	14 179,9	18 555,2	25 842,4
	April	11 194,9	9 294,1	9 789,3	11 034,0	13 042,6	17 447,8	25 453,8
	May	12 145,3	9 104,1	10 373,3	12 239,8	14 046,8	19 841,6	26 587,2
	June	11 637,2	9 745,9	10 856,0	13 360,1	17 809,8	19 033,2	29 713,8
	July	10 779,9	10 403,7	10 844,2	12 001,8	17 614,8	17 449,4	26 877,7
	August	11 633,5	9 612,0	9 841,7	11 687,6	17 339,2	17 890,4	26 889,8
	September	12 115,1	10 008,1	11 693,2	13 524,1	20 586,6	19 619,7	
	October	12 514,2	9 989,4	10 466,3	12 074,8	18 031,0	18 715,6	
	November	11 059,4	9 535,8	10 815,6	12 453,2	18 918,2	20 676,0	
	December	10 764,4	9 899,2	10 585,6	13 994,2	17 584,7	21 594,0	
	Year	137 504,5	117 526,9	125 057,8	142 817,9	193 589,5	224 444,4	
Seasonally adjusted values	January	11 462,8	10 019,5	10 278,5	10 459,7	13 047,3	17 934,6	20 092,5
	February	10 853,0	10 505,4	9 964,4	9 945,0	13 662,2	19 491,7	23 591,8
	March	11 685,5	9 925,0	10 472,8	11 384,5	14 020,7	18 367,1	25 478,7
	April	11 886,3	9 858,0	10 420,6	11 707,8	13 924,5	18 626,4	26 767,5
	May	12 107,9	9 074,1	10 326,6	12 071,6	13 875,7	19 565,0	26 308,9
	June	11 184,7	9 325,8	10 372,5	12 670,9	16 659,9	17 656,6	27 395,0
	July	10 713,9	10 447,6	10 795,8	11 812,8	16 999,8	16 946,5	26 585,5
	August	11 722,9	9 755,3	9 961,9	12 039,0	18 007,3	18 345,1	27 454,9
	September	11 833,4	9 452,4	10 795,1	12 276,6	18 573,6	17 665,2	
	October	12 277,9	9 843,3	10 308,6	11 977,4	18 193,0	19 029,2	
	November	11 216,3	9 605,6	10 740,3	12 185,0	18 582,5	20 211,7	
	December	10 383,5	9 653,9	10 298,5	13 528,7	16 940,8	20 633,6	

Table 6 – Total value of mineral sales excluding gold (R million)

		2002	2003	2004	2005	2006	* 2007	1/ 2008
Actual values	January	8 002,3	6 744,1	7 480,6	7 809,6	9 316,0	12 734,4	14 536,6
	February	7 368,2	7 452,6	7 039,8	7 813,9	10 469,6	14 498,1	18 320,2
	March	8 110,9	7 140,7	7 710,4	8 840,3	11 403,2	14 955,5	21 751,7
	April	7 481,9	6 815,2	7 366,5	8 963,2	10 850,3	14 595,8	21 792,3
	May	8 619,3	6 477,2	8 029,3	10 372,9	11 445,0	16 150,6	22 847,5
	June	8 035,5	6 759,5	8 107,4	10 562,0	14 217,3	15 745,9	25 732,6
	July	7 344,7	7 613,1	8 699,0	10 082,3	14 114,1	14 154,8	22 743,9
	August	8 065,2	7 052,7	7 546,9	10 210,5	14 152,3	14 647,2	23 792,0
	September	8 562,1	7 092,3	9 114,1	11 390,1	16 333,3	16 531,7	
	October	8 711,8	7 345,5	8 089,0	10 186,0	14 646,2	15 353,6	
	November	7 981,8	7 154,9	8 406,4	10 436,1	15 781,8	17 190,4	
	December	7 834,8	6 825,9	8 138,7	11 549,8	14 455,8	18 850,0	
	Year	96 118,5	84 473,7	95 728,1	118 216,7	157 184,9	185 408,0	
Seasonally adjusted values	January	8 060,6	6 818,9	7 815,6	8 531,8	10 319,4	14 576,0	16 786,7
	February	7 491,0	7 632,6	7 339,5	8 317,1	11 366,3	15 916,6	20 048,8
	March	8 266,8	7 338,2	7 914,5	8 907,8	11 449,4	15 065,6	21 734,0
	April	7 751,9	7 125,6	7 766,8	9 437,0	11 514,0	15 471,1	22 676,3
	May	8 450,9	6 328,5	7 854,5	10 090,2	11 112,1	15 652,9	22 350,3
	June	7 818,4	6 581,2	7 874,1	10 139,5	13 400,3	14 653,8	23 740,9
	July	7 214,2	7 606,8	8 641,0	9 914,3	13 613,8	13 822,1	22 716,0
	August	8 204,0	7 180,8	7 610,8	10 502,7	14 671,1	14 922,5	24 178,4
	September	8 432,9	6 736,5	8 442,7	10 355,7	14 731,8	14 876,9	
	October	8 710,2	7 320,2	7 988,9	10 105,2	14 806,9	15 657,2	
	November	8 046,5	7 147,7	8 257,7	10 130,9	15 416,1	16 699,2	
	December	7 447,0	6 607,5	7 906,7	11 153,1	13 905,4	17 964,4	

1/ Preliminary.
* Revised.

Table 7 – Total value of mineral sales according to mining divisions, mineral groups and minerals (R million)

	Actual values				Seasonally adjusted values		
	2007	2007	1/ 2008		2007	2008	
		August	July	August	August	July	August
Total, gold included	* 224 444,4	17 890,4	26 877,7	26 889,8	18 345,1	26 585,5	27 454,9
Total, gold excluded	* 185 408,0	14 647,2	22 743,9	23 792,0	14 922,5	22 716,0	24 178,4
Gold	39 036,7	3 243,2	4 133,8	3 097,7	3 422,6	3 869,5	3 276,5
Iron ore	13 483,2	898,7	1 646,9	1 355,6	962,8	1 618,6	1 471,8
Chromium	3 006,6	270,5	571,3	569,2	267,9	537,7	560,1
Copper	5 853,6	565,3	685,7	455,1	514,0	577,7	410,2
Manganese ore	3 571,4	349,0	1 405,5	2 696,8	344,3	1 880,8	2 642,9
PGMs	78 414,4	6 588,8	8 918,9	8 672,8	6 448,6	8 344,0	8 489,1
Nickel	8 863,7	467,1	430,3	397,6	540,0	464,1	472,6
Other metallic minerals	5 272,1	389,9	410,9	538,5	461,7	412,5	622,0
Coal	43 811,9	3 598,4	5 665,4	7 178,1	3 522,8	5 564,0	7 062,6
Building materials	* 5 993,1	564,0	602,0	576,5	516,6	562,8	528,6
- Granite or norite	* 494,8	53,1	66,0	63,0	44,9	55,4	52,8
- Lime and limestone	* 1 708,4	147,7	161,6	162,9	141,5	157,0	155,6
- Other building materials	* 3 790,0	363,2	374,3	350,7	330,2	350,4	320,2
Other non-metallic minerals	* 17 137,8	955,4	2 407,0	1 351,8	1 343,8	2 753,8	1 918,5

1/ Preliminary.

* Revised.

Table 8 – Contribution of the mining divisions to the total value of mineral sales

		Percentage contribution to total mineral sales during June to August 2007	Percentage change between June to August 2007 and June to August 2008	Contribution (percentage points) to the percentage change in the total value of mineral sales 1/	Difference in sales of mining divisions between June to August 2007 and June to August 2008
					R million
Gold		18,1	14,1	2,6	1 387,5
Non-gold minerals	Iron ore	5,6	45,4	2,5	1 386,0
	Chromium	1,4	114,5	1,6	892,1
	Copper	2,9	6,0	0,2	94,3
	Manganese ore	1,5	669,6	10,0	5 524,1
	PGMs	35,7	44,1	15,7	8 552,2
	Nickel	3,6	-31,0	-1,1	-607,9
	Other metallic minerals	2,4	15,1	0,4	200,8
	Coal	19,7	81,3	16,0	8 714,7
	Building materials	2,9	9,5	0,3	151,1
	Other non-metallic minerals	6,1	84,7	5,2	2 813,1
Total non-gold minerals		81,9	62,2	50,9	27 720,6
Total minerals		100,0	53,5	53,5	29 108,3

1/ The contribution to the percentage change in sales is calculated by multiplying the quarterly percentage change of each mineral with the percentage contribution to total mineral sales during June to August 2007, divided by 100.

Table 9 – Percentage change in the indices of mining production between the current month and the corresponding month of the previous year

	Base : 2000=100			
	Actual estimates September 2007	Actual estimates September 2008	% change between September 2007 and September 2008	Difference between September 2007 and September 2008
	Percentage points			
Gold	63,2	52,0	-17,7	-11,2
Non-gold minerals	137,3	135,7	-1,2	-1,6
Total	118,3	114,2	-3,5	-4,1

Table 10 – Percentage change in the indices of mining production between the current quarter and the corresponding quarter of the previous year

	Base : 2000=100			
	Actual estimates July to September 2007	Actual estimates July to September 2008	% change between July to September 2007 and July to September 2008	Difference between July to September 2007 and July to September 2008
	Percentage points			
Gold	61,2	49,5	-19,1	-11,7
Non-gold minerals	131,0	124,4	-5,0	-6,6
Total	113,1	105,1	-7,1	-8,0

Table 11 – Percentage change in the seasonally adjusted indices of mining production between the current month and the previous month

	Base : 2000=100			
	Actual estimates August 2008	Actual estimates September 2008	% change between August and September 2008	Difference between August and September 2008
	Percentage points			
Gold	45,6	47,9	5,0	2,3
Non-gold minerals	122,5	125,4	2,4	2,9
Total	102,7	105,5	2,7	2,8

Table 12 – Percentage change in the seasonally adjusted indices of mining production between the current quarter and the previous quarter

	Base : 2000=100			
	Actual estimates April to June 2008	Actual estimates July to September 2008	% change between April to June and July to September 2008	Difference between April to June and July to September 2008
	Percentage points			
Gold	51,9	47,7	-8,1	-4,2
Non-gold minerals	122,3	118,8	-2,9	-3,5
Total	104,2	100,6	-3,5	-3,6

Table 13 – Percentage change in the actual value of mineral sales between the current month and the corresponding month of the previous year

	Actual estimates August 2007	Actual estimates August 2008	% change between August 2007 and August 2008	Difference between August 2007 and August 2008
	R million	R million		R million
Gold	3 243,2	3 097,7	-4,5	-145,5
Non-gold minerals	14 647,2	23 792,0	62,4	9 144,8
Total	17 890,4	26 889,8	50,3	8 999,4

Table 14 – Percentage change in the actual value of mineral sales between the current quarter and the corresponding quarter of the previous year

	Actual estimates June to August 2007	Actual estimates June to August 2008	% change between June to August 2007 and June to August 2008	Difference between June to August 2007 and June to August 2008
	R million	R million		R million
Gold	9 825,2	11 212,7	14,1	1 387,5
Non-gold minerals	44 547,9	72 268,5	62,2	27 720,6
Total	54 373,0	83 481,3	53,5	29 108,3

Table 15 – Percentage change in the seasonally adjusted value of mineral sales between the current month and the previous month

	Actual seasonal adjusted estimates July 2008	Actual seasonal adjusted estimates August 2008	% change between July and August 2008	Difference between July and August 2008
	R million	R million		R million
Gold	3 869,5	3 276,5	-15,3	-593,0
Non-gold minerals	22 716,0	24 178,4	6,4	1 462,4
Total	26 585,5	27 454,9	3,3	869,4

Table 16 – Percentage change in the seasonally adjusted value of mineral sales between the current quarter and the previous quarter

	Actual estimates March to May 2008	Actual estimates June to August 2008	% change between March to May and June to August 2008	Difference between March to May and June to August 2008
	R million	R million		R million
Gold	11 794,5	10 800,1	-8,4	-994,4
Non-gold minerals	66 760,6	70 635,3	5,8	3 874,7
Total	78 555,1	81 435,4	3,7	2 880,3

Explanatory notes

Introduction	1	Statistics South Africa (Stats SA) publishes monthly information regarding the mining industry on the basis of mining production figures and mineral sales furnished by the Minerals Bureau, Department of Minerals and Energy. This statistical release contains detailed information regarding indices of the physical volume of mining production and the total value of mineral sales according to mining divisions and mineral groups on a monthly basis.
	2	In accordance with international practice, the indices have to be re-based every five years to a new base year. The base year of the index of the physical volume of mining production is currently 2000=100. Both actual and seasonally adjusted figures are presented.
	3	Due to mining production figures being available earlier than mineral sales figures, mining production indices are published one month earlier than mineral sales.
	4	The value of mineral sales is calculated, in general, on a free-on-rail/free-on-board basis.
	5	In order to improve timeliness, some information for the current month may have been estimated due to late response. These estimates will be revised in future statistical release(s) as soon as more up-to-date information is available.
Purpose of the survey	6	The monthly mining production and sales survey is conducted by the Minerals Bureau, covering all mining establishments operating in the South African economy. The results of this survey are used to calculate physical volume of mining production indices in order to estimate the gross domestic product (GDP) and its components, which in turn are used to develop and monitor government policy.
Scope of the survey	7	This survey covers mining establishments conducting activities regarding <ul style="list-style-type: none"> • The extracting, dressing and beneficiating of minerals occurring naturally, for example solids such as coal and ores.
Classification	8	The 1993 edition of the <i>Standard Industrial Classification of all Economic Activities (SIC)</i> , Fifth Edition, Report No. 09-90-02, was used to classify the statistical units in the survey. The SIC is based on the 1990 <i>International Standard Industrial Classification of all Economic Activities (ISIC)</i> with suitable adaptations for local conditions. Statistics in this publication are presented at SIC division, major group and subgroup level. Each statistical unit is classified to an industry which reflects the predominant activity of the establishment.
Statistical unit	9	The basic statistical unit for the collection of information is the mining establishment. An establishment is the smallest economic unit that functions as a separate entity. Each statistical unit is classified to an industry (see paragraph 8).
Weighting	10	The weights which are used to aggregate minerals to mineral groups and mineral groups to total mining are based on the value of production derived from detailed information for 2000 supplied by the Minerals Bureau, Department of Minerals and Energy.

Seasonal adjustment	11	<p>Seasonally adjusted estimates of all items are generated each month, using the X-11 Seasonal Adjustment Program developed by US Bureau of the Census Economic Research and Analyses Division, 1968. Seasonal adjustment is a means of removing the estimated effects of normal seasonal variation from the series so that the effects of other influences on the series can be more clearly recognised. Seasonal adjustment does not aim to remove irregular or non-seasonal influences which may be present in any particular month.</p> <p>Influences that are volatile or unsystematic can still make it difficult to interpret the movement of the series even after adjustment for seasonal variations. This means the month-to-month movements of seasonally adjusted estimates may not be reliable indicators of trend behaviour.</p>
Reliability of estimates	12	<p>Estimates are subject to sampling and non-sampling errors. Figures for the latest month are preliminary.</p>
Historical data	13	<p>More comprehensive detail on the method of calculation and historical data in respect of the production indices according to mining mineral groups for the period February 1990 to November 2002 is available in statistical release P2041.1, entitled <i>Mining statistics: Indices of the physical volume of mining production, Base: 2000=100, February 1990 to November 2002</i>, published on 11 February 2003 on the Stats SA website: www.statssa.gov.za</p>
Related publications	14	<p>Users may also wish to refer to the following publications which are available from Stats SA -</p> <ul style="list-style-type: none"> • <i>Bulletin of Statistics.</i> • <i>SA Statistics.</i>
Unpublished statistics	15	<p>In some cases Stats SA can also make available statistics not included in standard publications. The statistics can be made available via computer printouts or diskette or CD. Generally, a charge is made for providing unpublished statistics.</p>
Rounding-off of figures	16	<p>The figures in the tables have, where necessary, been rounded off to the nearest digit shown. There may, therefore, be slight discrepancies between the sums of the constituent items and the totals shown.</p>

Glossary

Free-on-rail	Free-on-rail relates to goods sold on the local market where no railage or road transport costs are involved.
Free-on-board basis	Free-on-board relates to goods destined for the export market. Railage, road transport and docking charges are involved but no charges are made for the transport by sea.
Index of physical volume of mining production	The index of physical volume of mining production or a production index is a statistical measure of the change in the volume of production. The production index of a mineral group is the ratio between the volume of production of a mineral group in a given period and the volume of production of the same mineral group in the base period. The current base period is 2000. The production in the base period is set at 100.
Industry	An industry consists of a group of establishments engaged in the same or similar kinds of economic activity. Industries are defined in the <i>System of National Accounts (SNA)</i> in the same way as in the <i>Standard Industrial Classification (SIC) of all Economic Activities</i> , Fifth Edition of January 1993.
PGMs - Platinum Group Metals	Platinum Group Metals include platinum; iridium; osmiridium; palladium; rhodium; ruthenium and osmium.
Sales	Sales are the total value of sales and transfers-out of goods mined by the mining establishments and the amounts received for installation, erection or assembly or other services rendered.
Weight	The weight of a mineral group is the ratio of the sales of a mineral group to the total sales of the mining industry. The weight of a mineral group reflects the importance of the mineral group in the total mining industry. The weights change over time due to quality changes and changes in relative prices. New weights need to be calculated from time to time.

General information

Stats SA publishes approximately 300 different statistical releases each year. It is not economically viable to produce them in more than one of South Africa's eleven official languages. Since the releases are used extensively, not only locally but also by international economic and social-scientific communities, Stats SA releases are published in English only.

Stats SA has copyright on this publication. Users may apply the information as they wish, provided that they acknowledge Stats SA as the source of the basic data wherever they process, apply, utilise, publish or distribute the data: and also that they specify that the relevant application and analysis (where applicable) result from their own processing of the data.

Advanced release calendar

An advanced release calendar is disseminated on www.statssa.gov.za

Stats SA products

A complete set of Stats SA publications is available at the Stats SA Library and the following libraries:

National Library of South Africa, Pretoria Division
National Library of South Africa, Cape Town Division
Natal Society Library, Pietermaritzburg
Library of Parliament, Cape Town
Bloemfontein Public Library
Johannesburg Public Library
Eastern Cape Library Services, King William's Town
Central Regional Library, Polokwane
Central Reference Library, Nelspruit
Central Reference Collection, Kimberley
Central Reference Library, Mmabatho

Stats SA also provides a subscription service.

Electronic services

A large range of data is available via on-line services, diskette, CD and computer printouts. For more details about our electronic data services, contact (012) 310 8600/8390/8351/8496/4892/8095.

You can visit us on the Internet at: www.statssa.gov.za

General enquiries

Telephone number (012) 317 8485 (technical inquiries)
(012) 310 2965/ 8220 (technical enquiries)
(012) 310 8161 (orders)
(012) 310 4883/ 4885/ 8018 (library)

Fax number: (012) 310 8664 (technical enquiries)

Email: martin.kohler@dme.gov.za (technical enquiries)
juan-pierret@statssa.gov.za (technical enquiries)
info@statssa.gov.za (user information services)
distribution@statssa.gov.za (orders)

Postal address: Private Bag X44, Pretoria, 0001

Produced by Stats SA