

STATISTICAL RELEASE
P2041

Mining: Production and sales
(Preliminary)

October 2018

Embargoed until:
11 December 2018
11:30

ENQUIRIES:
Juan-Pierre Terblanche
012 310 2965

FORTHCOMING ISSUE:
November 2018

EXPECTED RELEASE DATE:
15 January 2019

www.statssa.gov.za
info@statssa.gov.za
T +27 12 310 8911
F +27 12 310 8500

Private Bag X44, Pretoria, 0001, South Africa
ISibalo House, Koch Street, Salvokop, Pretoria, 0002

Contents

Production: results for October 2018.....	2
Table A – Key growth rates in the volume of mining production.....	2
Table B – Seasonally adjusted index of the volume of mining production for the latest three months by mineral group and mineral (Base: 2015=100).....	2
Figure 1 – Volume of mining production (Base: 2015=100)	3
Figure 2 – Volume of mining production (Base: 2015=100): year-on-year percentage change.....	3
Sales: results for October 2018.....	4
Table D – Key growth rates in mineral sales at current prices.....	4
Tables.....	5
Table 1 – Index of the volume of mining production (Base: 2015=100).....	5
Table 2 – Year-on-year percentage change in the volume of mining production.....	5
Table 3 – Seasonally adjusted volume of total mining production	5
Table 4 – Index of the volume of mining production by mineral group and mineral (Base: 2015=100)	6
Table 5 – Seasonally adjusted index of the volume of mining production by mineral group and mineral (Base: 2015=100)	6
Table 6 – Year-on-year percentage change in the volume of mining production by mineral group and mineral...	7
Table 7 – Contribution of each mineral group and mineral to the year-on-year percentage change in the volume of mining production (percentage points)	7
Table 8 – Mineral sales at current prices (R million)	8
Table 9 – Year-on-year percentage change in mineral sales at current prices.....	8
Table 10 – Seasonally adjusted total mineral sales at current prices	8
Table 11 – Mineral sales at current prices by mineral group and mineral (R million)	9
Table 12 – Year-on-year percentage change in mineral sales at current prices by mineral group and mineral.....	9
Table 13 – Contribution of each mineral group and mineral to the year-on-year percentage change in mineral sales at current prices (percentage points)	9
Survey information.....	10
Technical notes	11
Glossary.....	12
Technical enquiries.....	12
General information	13

Production: results for October 2018**Table A – Key growth rates in the volume of mining production**

	May-18	Jun-18	Jul-18	Aug-18	Sep-18	Oct-18
Year-on-year % change, unadjusted	1,5	5,5	-3,7	-6,7	-2,0	0,5
Month-on-month % change, seasonally adjusted	7,6	5,0	-8,3	1,1	0,7	3,3
3-month % change, seasonally adjusted ¹	-0,8	2,0	4,6	3,2	-2,1	-1,5

¹ Percentage change between the previous three months and the three months ending in the month indicated.

Mining production increased by 0,5% year-on-year in October 2018. The largest positive contributors were PGMs (21,4% and contributing 4,3 percentage points), diamonds (27,2% and contributing 1,4 percentage points) and manganese ore (19,9% and contributing 0,9 of a percentage point).

The largest negative contributors were iron ore (-22,0% and contributing -3,0 percentage points) and gold (-15,1% and contributing -2,3 percentage points) – see Tables 6 and 7.

Seasonally adjusted mining production increased by 3,3% in October 2018 compared with September 2018. This followed month-on-month changes of 0,7% in September 2018 and 1,1% in August 2018.

Table B – Seasonally adjusted index of the volume of mining production for the latest three months by mineral group and mineral (Base: 2015=100)

Mineral group and mineral	Weight	May – Jul 2018	Aug – Oct 2018	% change between May – Jul 2018 and Aug – Oct 2018	Contribution (% points) to the % change in total mining production
Gold	15,97	84,7	80,0	-5,5	-0,7
Iron ore	12,44	102,7	93,7	-8,8	-1,1
Chromium ore	3,31	116,7	115,2	-1,3	0,0
Copper ¹	1,10	60,8	56,9	-6,4	0,0
Manganese ore ²	3,33	127,5	153,4	20,3	0,9
PGMs	23,48	101,8	102,0	0,2	0,0
Nickel ²	1,70	74,6	78,5	5,2	0,1
Other metallic minerals ¹	2,19	87,0	93,7	7,7	0,1
Diamonds ²	4,15	168,5	133,4	-20,8	-1,4
Coal	24,44	98,3	101,7	3,5	0,8
Building materials	2,05	93,3	90,8	-2,7	-0,1
Other non-metallic minerals ¹	5,84	105,6	105,8	0,2	0,0
Total	100,00	101,3	99,8	-1,5	-1,5

¹ Adjusted for calendar effects only. See notes 4, 5 and 6 on page 11.

² Unadjusted.

Seasonally adjusted mining production decreased by 1,5% in the three months ended October 2018 compared with the previous three months. Diamonds (-20,8% and contributing -1,4 percentage points), iron ore (-8,8% and contributing -1,1 percentage points) and gold (-5,5% and contributing -0,7 of a percentage point) were the largest negative contributors – see Table B.

Figure 1 – Volume of mining production (Base: 2015=100)

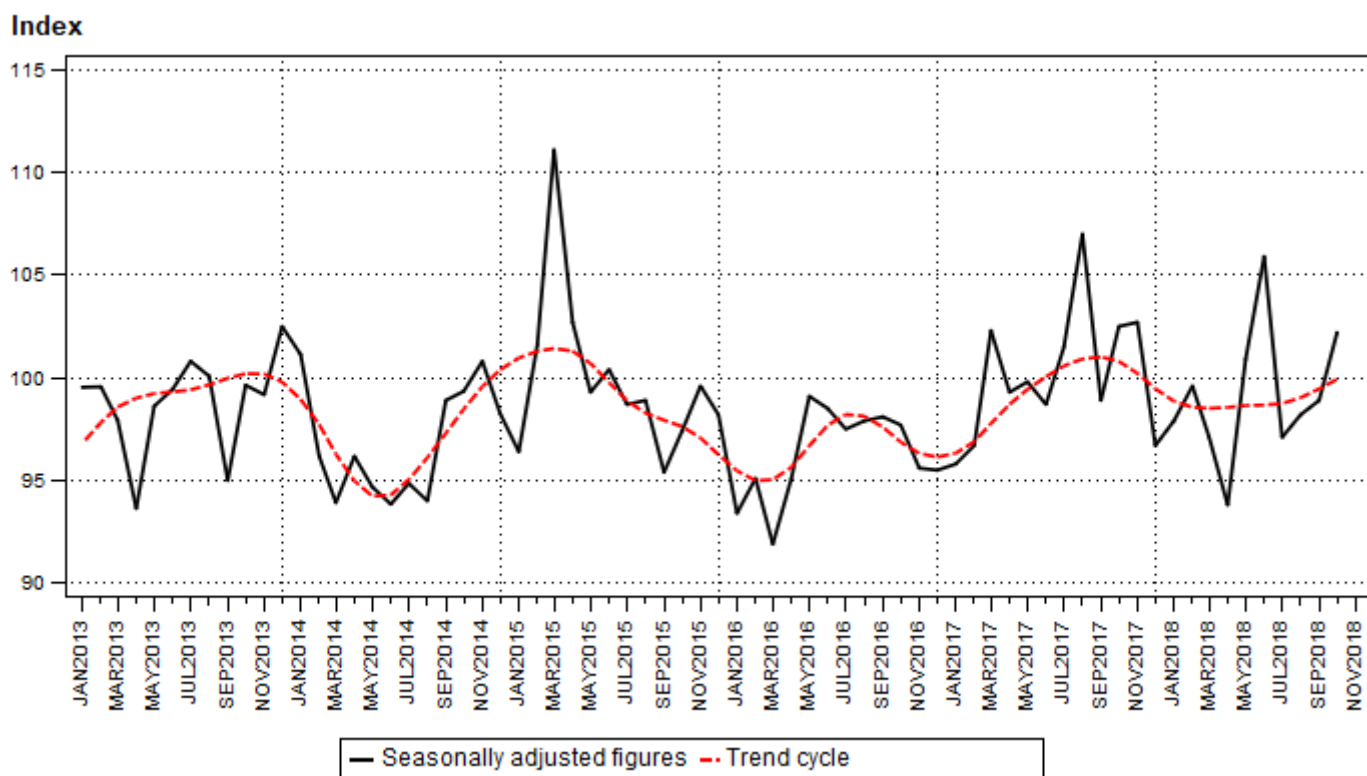
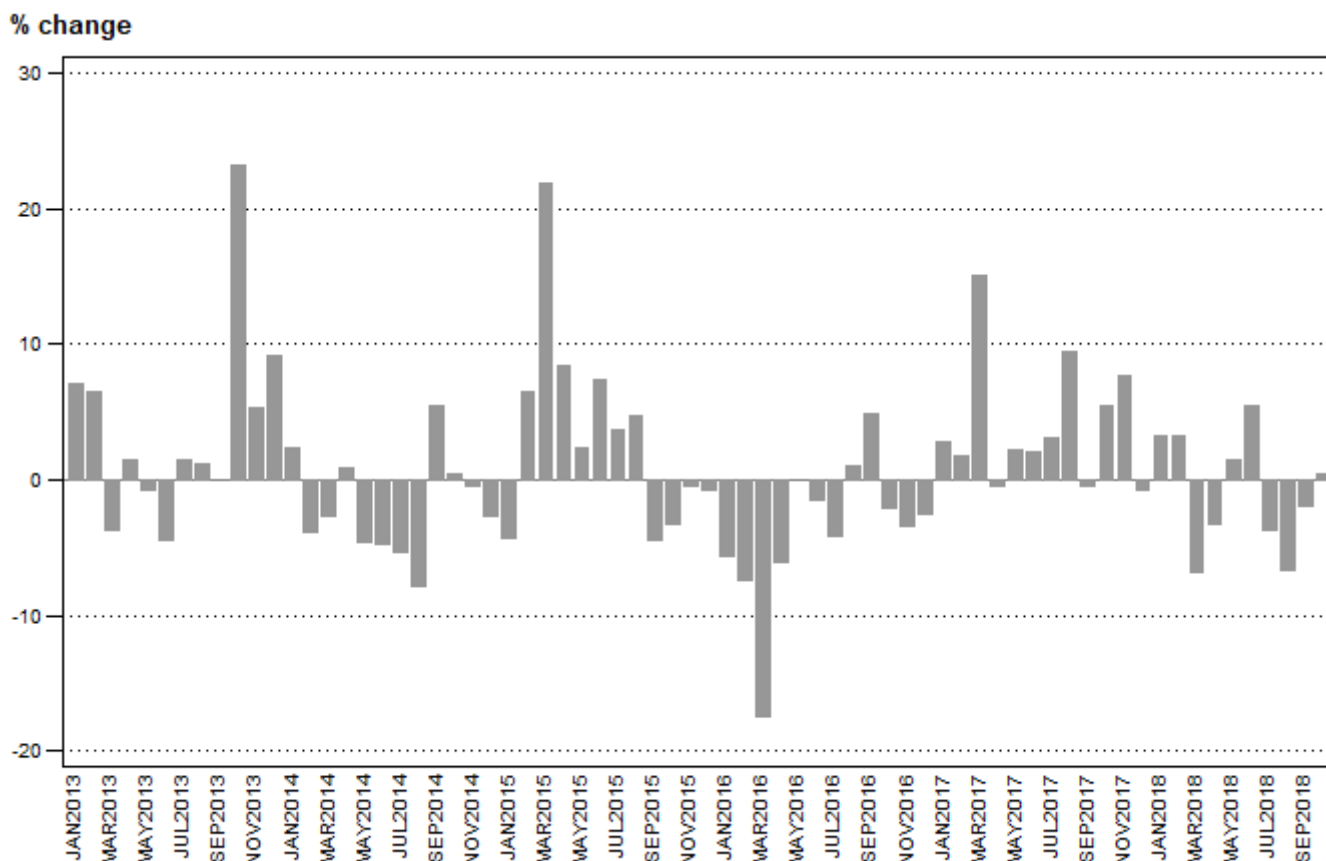


Figure 2 – Volume of mining production (Base: 2015=100): year-on-year percentage change



Sales: results for October 2018**Table D – Key growth rates in mineral sales at current prices**

	May-18	Jun-18	Jul-18	Aug-18	Sep-18	Oct-18
Year-on-year % change, unadjusted	14,6	10,4	-0,4	5,3	-3,2	3,9
Month-on-month % change, seasonally adjusted	5,8	1,8	-5,5	6,4	-4,3	9,0
3-month % change, seasonally adjusted ¹	-0,7	5,7	6,8	4,8	0,0	3,0

¹ Percentage change between the previous three months and the three months ending in the month indicated.

Mineral sales increased by 3,9% year-on-year in October 2018. The largest positive contributors were:

- PGMs (38,8% and contributing 6,8 percentage points);
- coal (7,3% and contributing 2,1 percentage points); and
- 'other' metallic minerals (50,0% and contributing 1,0 percentage point).

Gold was a significant negative contributor (-21,3% and contributing -4,3 percentage points) – see Tables 12 and 13.

Seasonally adjusted mineral sales at current prices increased by 9,0% in October 2018 compared with September 2018. This followed month-on-month changes of -4,3% in September 2018 and 6,4% in August 2018.

In the three months ended October 2018 the seasonally adjusted value of mineral sales at current prices was 3,0% higher compared with the previous three months.

Risenga Maluleke
Statistician-General

Tables

Table 1 – Index of the volume of mining production (Base: 2015=100)

Month	2012	2013	2014	2015	2016	2017 ¹	2018 ¹
Jan	83,5	89,4	91,5	87,6	82,7	85,0	87,7
Feb	82,6	88,0	84,6	90,1	83,4	84,9	87,6
Mar	96,1	92,5	90,1	109,7	90,6	104,3	97,2
Apr	90,6	91,9	92,6	100,4	94,3	93,9	90,8
May	102,1	101,3	96,6	98,8	98,8	101,0	102,5
Jun	107,7	103,0	98,2	105,4	103,8	105,9	111,7
Jul	103,3	104,8	99,2	102,9	98,6	101,7	97,9
Aug	104,1	105,4	97,2	101,8	102,8	112,6	105,1
Sep	98,4	98,4	103,7	99,0	103,9	103,5	101,4
Oct	84,4	104,0	104,4	101,1	99,0	104,4	104,9
Nov	99,0	104,2	103,7	103,3	99,8	107,4	
Dec	94,8	103,5	100,7	100,0	97,5	96,7	
Year	95,6	98,9	96,9	100,0	96,3	100,1	

¹ Preliminary.

Table 2 – Year-on-year percentage change in the volume of mining production

Month	2013	2014	2015	2016	2017	2018	2018 year-to-date
Jan	7,0	2,3	-4,3	-5,6	2,8	3,2	3,2
Feb	6,5	-3,8	6,5	-7,4	1,8	3,2	3,2
Mar	-3,7	-2,6	21,8	-17,4	15,1	-6,8	-0,7
Apr	1,4	0,8	8,4	-6,1	-0,4	-3,3	-1,3
May	-0,9	-4,6	2,3	0,0	2,2	1,5	-0,6
Jun	-4,3	-4,7	7,4	-1,5	2,0	5,5	0,5
Jul	1,4	-5,4	3,8	-4,2	3,1	-3,7	-0,2
Aug	1,2	-7,8	4,8	1,0	9,5	-6,7	-1,1
Sep	0,0	5,5	-4,6	4,9	-0,4	-2,0	-1,2
Oct	23,2	0,4	-3,2	-2,1	5,5	0,5	-1,0
Nov	5,3	-0,5	-0,4	-3,4	7,6		
Dec	9,2	-2,8	-0,7	-2,5	-0,8		
Year	3,5	-2,0	3,2	-3,7	3,9		

Table 3 – Seasonally adjusted volume of total mining production

Month	Index (Base: 2015=100)				Month-on-month % change			
	2015	2016	2017	2018	2015	2016	2017	2018
Jan	96,4	93,4	95,8	97,9	-2,0	-4,9	0,3	1,2
Feb	101,6	95,1	96,7	99,6	5,4	1,8	0,9	1,7
Mar	111,1	91,9	102,3	97,1	9,4	-3,4	5,8	-2,5
Apr	102,7	95,1	99,3	93,8	-7,6	3,5	-2,9	-3,4
May	99,3	99,1	99,8	100,9	-3,3	4,2	0,5	7,6
Jun	100,4	98,5	98,7	105,9	1,1	-0,6	-1,1	5,0
Jul	98,7	97,5	101,5	97,1	-1,7	-1,0	2,8	-8,3
Aug	98,9	97,9	107,0	98,2	0,2	0,4	5,4	1,1
Sep	95,4	98,1	98,9	98,9	-3,5	0,2	-7,6	0,7
Oct	97,4	97,7	102,5	102,2	2,1	-0,4	3,6	3,3
Nov	99,6	95,6	102,7		2,3	-2,1	0,2	
Dec	98,2	95,5	96,7		-1,4	-0,1	-5,8	

Table 4 – Index of the volume of mining production by mineral group and mineral (Base: 2015=100) ¹

Mineral group and mineral	Weight	May-18	Jun-18	Jul-18	Aug-18	Sep-18	Oct-18
Gold	15,97	88,1	90,7	87,2	86,0	84,6	84,1
Iron ore	12,44	109,7	123,2	88,6	101,9	96,7	89,6
Chromium ore	3,31	119,5	121,5	124,2	113,7	122,2	125,3
Copper	1,10	62,9	70,0	51,2	34,0	59,3	79,2
Manganese ore	3,33	120,1	136,1	126,4	133,6	159,6	167,1
PGMs	23,48	100,6	122,0	85,1	109,0	108,7	108,8
Nickel	1,70	78,1	84,6	61,0	78,9	76,2	80,4
Other metallic minerals	2,19	101,6	89,2	72,6	99,7	90,8	93,1
Diamonds	4,15	134,0	166,0	205,5	129,9	107,9	162,3
Coal	24,44	101,6	105,4	101,2	111,3	100,0	106,0
Building materials	2,05	102,3	98,7	103,2	102,7	94,9	101,1
Other non-metallic minerals	5,84	111,7	100,2	104,6	106,9	105,2	104,3
Total	100,00	102,5	111,7	97,9	105,1	101,4	104,9

¹ All index values in this table are preliminary. Annual averages and annual percentage changes are available on the following link: [Annual data](#)

Table 5 – Seasonally adjusted index of the volume of mining production by mineral group and mineral (Base: 2015=100)

Mineral group and mineral	May-18	Jun-18	Jul-18	Aug-18	Sep-18	Oct-18	Month-on-month % change
Gold	87,0	82,5	84,7	82,7	77,2	80,0	3,6
Iron ore	109,1	111,5	87,6	97,8	94,7	88,5	-6,5
Chromium ore	116,6	114,7	118,9	110,0	116,5	119,0	2,1
Copper ¹	61,4	71,2	49,7	32,5	60,5	77,7	28,4
Manganese ore ²	120,1	136,1	126,4	133,6	159,6	167,1	4,7
PGMs	101,3	114,9	89,3	93,0	103,6	109,4	5,6
Nickel ²	78,1	84,6	61,0	78,9	76,2	80,4	5,5
Other metallic minerals ¹	99,7	90,6	70,7	97,8	92,2	91,2	-1,1
Diamonds ²	134,0	166,0	205,5	129,9	107,9	162,3	50,4
Coal	97,5	100,7	96,8	105,1	101,2	98,9	-2,3
Building materials	93,6	92,9	93,3	93,0	91,5	88,0	-3,8
Other non-metallic minerals ¹	107,9	101,4	107,5	103,9	106,6	106,8	0,2
Total	100,9	105,9	97,1	98,2	98,9	102,2	3,3

¹ Adjusted for calendar effects only. See notes 4, 5 and 6 on page 11.

² Unadjusted.

Table 6 – Year-on-year percentage change in the volume of mining production by mineral group and mineral

Mineral group and mineral	May-18	Jun-18	Jul-18	Aug-18	Sep-18	Oct-18
Gold	-10,6	-14,0	-15,1	-15,9	-19,7	-15,1
Iron ore	12,7	12,4	-9,7	-12,2	0,5	-22,0
Chromium ore	9,6	4,7	8,7	-3,5	9,2	9,4
Copper	1,5	-4,4	-42,0	-61,6	-44,7	-22,8
Manganese ore	-20,5	-7,2	13,0	3,2	16,0	19,9
PGMs	14,4	29,4	-6,3	-6,3	7,9	21,4
Nickel	-4,6	-5,2	-25,4	-14,9	-19,8	8,8
Other metallic minerals	8,0	-8,6	-23,7	-14,9	-15,5	-9,1
Diamonds	-1,3	20,5	40,6	-11,1	10,6	27,2
Coal	-3,6	0,8	-4,6	4,4	-2,1	-1,3
Building materials	-12,0	-15,5	-10,9	-8,3	-12,3	-8,7
Other non-metallic minerals	10,7	-8,2	13,4	-8,9	-3,8	-4,8
Total	1,5	5,5	-3,7	-6,7	-2,0	0,5

Table 7 – Contribution of each mineral group and mineral to the year-on-year percentage change in the volume of mining production (percentage points)

Mineral group and mineral	May-18	Jun-18	Jul-18	Aug-18	Sep-18	Oct-18
Gold	-1,7	-2,2	-2,4	-2,3	-3,2	-2,3
Iron ore	1,5	1,6	-1,2	-1,6	0,1	-3,0
Chromium ore	0,3	0,2	0,3	-0,1	0,3	0,3
Copper	0,0	0,0	-0,4	-0,5	-0,5	-0,2
Manganese ore	-1,0	-0,3	0,5	0,1	0,7	0,9
PGMs	3,0	6,1	-1,3	-1,5	1,8	4,3
Nickel	-0,1	-0,1	-0,3	-0,2	-0,3	0,1
Other metallic minerals	0,2	-0,2	-0,5	-0,3	-0,4	-0,2
Diamonds	-0,1	1,1	2,4	-0,6	0,4	1,4
Coal	-0,9	0,2	-1,2	1,0	-0,5	-0,3
Building materials	-0,3	-0,4	-0,3	-0,2	-0,3	-0,2
Other non-metallic minerals	0,6	-0,5	0,7	-0,5	-0,2	-0,3
Total	1,5	5,5	-3,7	-6,7	-2,0	0,5

Table 8 – Mineral sales at current prices (R million)

Month	2012	2013	2014	2015	2016	2017 ¹	2018 ¹
Jan	28 079,4	28 977,1	32 608,8	27 714,6	25 021,7	37 929,2	34 503,0
Feb	29 335,5	30 361,5	35 488,2	30 712,0	30 250,9	33 766,1	34 917,3
Mar	30 912,0	34 761,4	35 172,2	34 751,6	35 051,0	39 552,1	39 786,7
Apr	26 772,5	31 865,2	31 647,7	32 675,8	36 202,7	34 971,3	37 055,3
May	31 257,0	30 402,1	30 932,4	32 812,7	36 489,3	36 358,8	41 683,6
Jun	33 958,2	35 088,5	31 630,8	35 668,4	43 040,2	40 787,6	45 026,6
Jul	30 899,0	32 847,9	31 517,7	30 620,3	33 169,6	37 207,9	37 065,4
Aug	31 402,3	35 523,4	32 124,1	31 313,7	36 902,6	40 873,1	43 022,4
Sep	30 367,0	34 731,0	35 345,8	33 416,7	47 602,2	44 280,1	42 883,0
Oct	28 258,6	34 544,7	34 101,5	33 004,9	35 817,0	44 043,7	45 762,6
Nov	29 921,3	34 122,6	32 274,1	30 901,0	36 800,3	42 121,2	
Dec	32 954,5	34 452,5	33 434,3	34 055,0	41 242,0	42 597,0	
Total	364 117,3	397 677,9	396 277,6	387 646,7	437 589,5	474 488,1	

¹ Preliminary.**Table 9 – Year-on-year percentage change in mineral sales at current prices**

Month	2013	2014	2015	2016	2017	2018	2018 year-to-date
Jan	3,2	12,5	-15,0	-9,7	51,6	-9,0	-9,0
Feb	3,5	16,9	-13,5	-1,5	11,6	3,4	-3,2
Mar	12,5	1,2	-1,2	0,9	12,8	0,6	-1,8
Apr	19,0	-0,7	3,2	10,8	-3,4	6,0	0,0
May	-2,7	1,7	6,1	11,2	-0,4	14,6	2,9
Jun	3,3	-9,9	12,8	20,7	-5,2	10,4	4,3
Jul	6,3	-4,0	-2,8	8,3	12,2	-0,4	3,6
Aug	13,1	-9,6	-2,5	17,8	10,8	5,3	3,9
Sep	14,4	1,8	-5,5	42,5	-7,0	-3,2	3,0
Oct	22,2	-1,3	-3,2	8,5	23,0	3,9	3,1
Nov	14,0	-5,4	-4,3	19,1	14,5		
Dec	4,5	-3,0	1,9	21,1	3,3		
Total	9,2	-0,4	-2,2	12,9	8,4		

Table 10 – Seasonally adjusted total mineral sales at current prices

Month	R million				Month-on-month % change			
	2015	2016	2017	2018	2015	2016	2017	2018
Jan	30 499,2	28 763,9	43 408,2	39 542,5	-5,5	-9,7	13,2	-4,1
Feb	33 120,4	32 728,8	36 682,5	38 082,8	8,6	13,8	-15,5	-3,7
Mar	34 072,1	33 318,0	37 872,2	37 886,6	2,9	1,8	3,2	-0,5
Apr	33 264,9	38 041,0	36 782,2	38 964,1	-2,4	14,2	-2,9	2,8
May	33 940,5	37 470,6	37 207,4	41 205,2	2,0	-1,5	1,2	5,8
Jun	33 014,0	38 900,8	36 909,4	41 946,6	-2,7	3,8	-0,8	1,8
Jul	31 438,5	35 317,9	39 461,4	39 638,0	-4,8	-9,2	6,9	-5,5
Aug	31 353,5	36 975,3	39 732,7	42 174,5	-0,3	4,7	0,7	6,4
Sep	31 697,1	43 519,5	41 675,0	40 357,7	1,1	17,7	4,9	-4,3
Oct	31 195,5	34 841,5	42 660,6	43 992,6	-1,6	-19,9	2,4	9,0
Nov	31 051,7	37 044,0	40 975,8		-0,5	6,3	-3,9	
Dec	31 844,6	38 348,8	41 214,4		2,6	3,5	0,6	

Table 11 – Mineral sales at current prices by mineral group and mineral (R million) ¹

Mineral group and mineral	May-18	Jun-18	Jul-18	Aug-18	Sep-18	Oct-18
Gold	6 954,7	6 342,6	6 703,4	6 400,8	4 008,8	6 997,3
Iron ore	3 766,9	3 444,2	3 158,6	4 547,4	4 070,8	4 166,4
Chromium ore	1 841,2	2 102,1	1 871,2	1 764,1	1 778,9	1 618,6
Copper	312,1	442,9	205,1	233,2	486,9	376,6
Manganese ore	4 101,2	4 591,3	3 535,9	3 514,2	3 930,9	3 092,1
PGMs	8 603,5	10 449,9	6 922,9	9 390,4	10 546,2	10 768,5
Nickel	670,7	621,6	571,9	624,8	558,0	525,9
Other metallic minerals	962,4	1 120,6	885,6	995,4	1 442,4	1 287,9
Coal	11 923,8	11 850,0	10 994,2	12 375,3	12 239,2	13 298,8
Building materials	982,6	989,4	1 003,1	1 009,9	916,5	1 083,2
Other non-metallic minerals	1 564,5	3 072,0	1 213,5	2 166,9	2 904,3	2 547,4
Total	41 683,6	45 026,6	37 065,4	43 022,4	42 883,0	45 762,6

¹ All values in this table are preliminary.

Table 12 – Year-on-year percentage change in mineral sales at current prices by mineral group and mineral

Mineral group and mineral	May-18	Jun-18	Jul-18	Aug-18	Sep-18	Oct-18
Gold	11,0	-12,9	-8,6	-7,5	-53,7	-21,3
Iron ore	17,5	6,8	-14,5	-0,3	-6,6	-7,4
Chromium ore	-15,4	19,0	11,5	-3,0	-15,6	-22,1
Copper	6,8	37,3	-29,9	-53,5	-7,5	-25,2
Manganese ore	94,6	16,7	27,3	48,6	25,2	3,9
PGMs	13,5	32,2	1,4	1,3	19,5	38,8
Nickel	11,0	12,3	59,8	15,5	21,9	-23,1
Other metallic minerals	58,6	0,4	-16,9	105,2	20,2	50,0
Coal	16,2	22,4	-1,5	8,5	10,2	7,3
Building materials	-10,5	-6,3	-3,6	-2,5	-11,3	4,1
Other non-metallic minerals	-27,8	-22,2	23,0	9,9	1,2	7,8
Total	14,6	10,4	-0,4	5,3	-3,2	3,9

Table 13 – Contribution of each mineral group and mineral to the year-on-year percentage change in mineral sales at current prices (percentage points)

Mineral group and mineral	May-18	Jun-18	Jul-18	Aug-18	Sep-18	Oct-18
Gold	1,9	-2,3	-1,7	-1,3	-10,5	-4,3
Iron ore	1,5	0,5	-1,4	0,0	-0,6	-0,8
Chromium ore	-0,9	0,8	0,5	-0,1	-0,7	-1,0
Copper	0,1	0,3	-0,2	-0,7	-0,1	-0,3
Manganese ore	5,5	1,6	2,0	2,8	1,8	0,3
PGMs	2,8	6,2	0,3	0,3	3,9	6,8
Nickel	0,2	0,2	0,6	0,2	0,2	-0,4
Other metallic minerals	1,0	0,0	-0,5	1,2	0,5	1,0
Coal	4,6	5,3	-0,4	2,4	2,6	2,1
Building materials	-0,3	-0,2	-0,1	-0,1	-0,3	0,1
Other non-metallic minerals	-1,7	-2,1	0,6	0,5	0,1	0,4
Total	14,6	10,4	-0,4	5,3	-3,2	3,9

Survey information

Introduction	1	Statistics South Africa (Stats SA) publishes monthly mining production indices and mineral sales based on the information furnished by the Department of Mineral Resources (DMR). Data in this release are presented by mineral group and mineral.
	2	In accordance with international practice, the indices are usually re-based every five years to a new base year. The current base year of the index of the volume of mining production is 2015=100. Both actual and seasonally adjusted figures are presented.
	3	The value of mineral sales is calculated, in general, on a free-on-rail/free-on-board basis.
	4	In order to improve timeliness, some information for the current month had to be estimated due to late response. These estimates will be revised in future statistical release(s) as soon as more up-to-date information is available.
Purpose of the survey	5	The monthly mining production and sales survey is conducted by the DMR, covering all mining establishments operating in the South African economy. The results of this survey are used to calculate the volume of mining production indices in order to estimate the gross domestic product (GDP) and its components, which in turn are used to develop and monitor government policy.
Scope of the survey	6	This survey covers mining establishments conducting activities regarding the extracting, dressing and beneficiating of minerals occurring naturally, for example solids such as coal and ores.
Classification	7	The 1993 edition of the <i>Standard Industrial Classification of all Economic Activities</i> (SIC), Fifth Edition, Report No. 09-90-02, was used to classify the statistical units in the survey. The SIC is based on the 1990 <i>International Standard Industrial Classification of all Economic Activities</i> (ISIC) with suitable adaptations for local conditions. Each statistical unit is classified to an industry which reflects the predominant activity of the establishment. Statistics in this publication are presented by mineral group and mineral.
Statistical unit	8	The statistical unit for the collection of information is the mining establishment. An establishment is the smallest economic unit that functions as a separate entity.
Rounding-off of figures	9	The figures in the tables have, where necessary, been rounded off to the nearest digit shown. There may, therefore, be slight discrepancies between the sums of the constituent items and the totals shown.
Historical data and past publications	10	Historical mining data and past publications are available on the Stats SA website. Click on the following link (Time series data) or (Past publications) to access the data and releases electronically. Annual averages and annual percentage changes are available on the following link: Annual data

Technical notes

Index of the volume of mining production	1	The index of the volume of mining production, also known as the production index, is a statistical measure of the change in the volume of production. The production index of a mineral group is the ratio between the volume of production of a mineral group in a given period and the volume of production of the same mineral group in the base period. The current base period is 2015. The production in the base period is set at 100.
Index weighting	2	The weight of a mineral group is the ratio of its value added to the total value added of the mining industry. The weight of a mineral group reflects the importance of the mineral group in the total mining industry. The weights change over time due to quality improvements and changes in relative prices. New weights will be calculated annually.
	3	The weights, which are used to aggregate minerals to mineral groups and mineral groups to total mining, are derived from national accounts value added data. The latest weights (implemented in the August 2018 publication) are based on an average of value added data for the years 2014, 2015 and 2016. These weights are applicable from January 2016.
Seasonal adjustment	4	Seasonally adjusted estimates are generated each month using the X-12-ARIMA Seasonal Adjustment Program developed by the US Bureau of the Census, 1968. Seasonal adjustment is a means of removing the estimated effects of normal seasonal variation from the series so that the effects of other influences on the series can be recognised more clearly. Seasonal adjustment does not aim to remove irregular or non-seasonal influences which may be present in any particular month.
	5	Influences that are volatile or unsystematic can still make it difficult to interpret the movement of the series even after adjustment for seasonal variations. This means the month-to-month movements of seasonally adjusted estimates may not be reliable indicators of trend behaviour. The X-12-ARIMA procedure for mining production and sales is described in more detail on the Stats SA website at: Click to download seasonal adjustment for mining production and sales
Calendar effects	6	These are effects due to calendar variations. Such calendar effects include the number of working/trading days in a week, moving holidays such as Easter and the length of month (some months have more days than others).
Trend cycle	7	The trend is the long-term pattern or movement of a time series. The X-12-ARIMA Seasonal Adjustment Program is used for smoothing seasonally adjusted estimates to estimate the underlying trend cycle.
Reliability of estimates	8	Figures for the latest 2 calendar years are preliminary.
Month-on-month percentage change	9	The month-on-month percentage change in a variable for any given month is the change between that month and the previous month, expressed as a percentage of the latter.
Year-on-year percentage change	10	The year-on-year percentage change in a variable for any given period is the change between that period and the corresponding period of the previous year, expressed as a percentage of the latter.
Index contribution (percentage points)	11	The contribution (percentage points) of a mineral group or mineral to the percentage change in the total mining production for a given period is calculated by multiplying the difference in the index for each mineral group or mineral by the weight of the mineral group or mineral and then dividing by the previous period's total index.

**Sales contribution
(percentage points)**

12 The contribution (percentage points) to the percentage change in total sales for a given period is calculated by multiplying the percentage change of each mineral group or mineral with its percentage contribution to total mineral sales of the previous period, divided by 100.

Glossary**Free-on-rail**

Free-on-rail relates to goods sold on the local market where no railage or road transport costs are involved.

Free-on-board

Free-on-board relates to goods destined for the export market. Railage, road transport and docking charges are involved but no charges are made for transport by sea.

Industry

An industry consists of a group of establishments engaged in the same or similar kinds of economic activity. Industries are defined in the *System of National Accounts* (SNA) in the same way as in the *Standard Industrial Classification of all Economic Activities* (SIC), Fifth Edition of January 1993.

PGMs – Platinum group metals

Platinum group metals include platinum, iridium, osmiridium, palladium, rhodium, ruthenium and osmium.

Sales

Sales are the total value of sales of primary minerals at the first point of saleability by the mining establishment.

Symbols and abbreviations

DMR	Department of Mineral Resources
GDP	Gross domestic product
ISIC	International Standard Industrial Classification
PGMs	Platinum group metals
SIC	Standard Industrial Classification of all Economic Activities
SNA	System of National Accounts
Stats SA	Statistics South Africa
*	Revised

Technical enquiries**JP Terblanche**

Telephone number: (012) 310 2965
Email: juan-pierret@statsa.gov.za

Mpuleng Galane

Telephone number: (012) 444 3735
Email: mpuleng.galane@dmr.gov.za

General information

Stats SA publishes approximately 300 different statistical releases each year. It is not economically viable to produce them in more than one of South Africa's eleven official languages. Since the releases are used extensively, not only locally but also by international economic and social-scientific communities, Stats SA releases are published in English only.

Stats SA has copyright on this publication. Users may apply the information as they wish, provided that they acknowledge Stats SA as the source of the basic data wherever they process, apply, utilise, publish or distribute the data and also that they specify that the relevant application and analysis (where applicable) result from their own processing of the data.

Advance release calendar

An advance release calendar is disseminated on www.statssa.gov.za

Stats SA products

A complete set of Stats SA publications is available at the Stats SA Library and the following libraries:

National Library of South Africa, Pretoria Division
National Library of South Africa, Cape Town Division
Natal Society Library, Pietermaritzburg
Library of Parliament, Cape Town
Bloemfontein Public Library
Johannesburg Public Library
Eastern Cape Library Services, King William's Town
Central Regional Library, Polokwane
Central Reference Library, Mbombela
Central Reference Collection, Kimberley
Central Reference Library, Mmabatho

Stats SA also provides a subscription service.

Electronic services

A large range of data is available via online services. For more detail about our electronic services, contact Stats SA's user information service.

You can visit us on the internet at: www.statssa.gov.za

General enquiries

User information services Telephone number: (012) 310 8600
Email address: info@statssa.gov.za

Postal address Private Bag X44, Pretoria, 0001

Produced by Stats SA