



The South Africa I know, the home I understand

---

# Statistical release

## P2041

# Mining: Production and sales (Preliminary)

October 2015

**Embargoed until:  
8 December 2015  
11:30**

**Enquiries:**

Juan-Pierre Terblanche  
Tel: (012) 310 2965

**Forthcoming issue:**

November 2015

**Expected release date:**

14 January 2016

**Contents**

**Production: results for October 2015** ..... **2**

    Table A – Key growth rates in the volume of mining production..... 2

    Table B – Seasonally adjusted index of the volume of mining production for the latest three months by mineral group and mineral (Base: 2010=100)..... 2

    Figure 1 – Volume of mining production (Base: 2010=100) ..... 3

    Figure 2 – Volume of mining production (Base: 2010=100): year-on-year percentage change..... 3

**Sales: results for September 2015**..... **4**

    Table C – Key growth rates in mineral sales at current prices..... 4

**Tables** ..... **5**

    Table 1 – Index of the volume of mining production (Base: 2010=100)..... 5

    Table 2 – Year-on-year percentage change in the volume of mining production..... 5

    Table 3 – Seasonally adjusted volume of total mining production ..... 5

    Table 4 – Index of the volume of mining production by mineral group and mineral (Base: 2010=100)..... 6

    Table 5 – Seasonally adjusted index of the volume of mining production by mineral group and mineral (Base: 2010=100) ..... 6

    Table 6 – Year-on-year percentage change in the volume of mining production by mineral group and mineral..... 7

    Table 7 – Contribution of each mineral group and mineral to the year-on-year percentage change in the volume of mining production (percentage points) ..... 7

    Table 8 – Mineral sales at current prices (R million) ..... 8

    Table 9 – Year-on-year percentage change in mineral sales at current prices..... 8

    Table 10 – Seasonally adjusted total mineral sales at current prices ..... 8

    Table 11 – Mineral sales at current prices by mineral group and mineral (R million) ..... 9

    Table 12 – Year-on-year percentage change in mineral sales at current prices by mineral group and mineral..... 9

    Table 13 – Contribution of each mineral group and mineral to the year-on-year percentage change in mineral sales at current prices (percentage points) ..... 9

**Survey information**..... **10**

**Technical notes** ..... **11**

**Glossary** ..... **12**

**Technical enquiries**..... **12**

**General information** ..... **13**

**Production: results for October 2015**

**Table A – Key growth rates in the volume of mining production**

	May-15	Jun-15	Jul-15	Aug-15	Sep-15	Oct-15
Year-on-year % change, unadjusted	2,8	6,9	4,1	3,8	-4,7	-4,6
Month-on-month % change, seasonally adjusted	-3,6	2,2	-0,9	-1,1	-4,0	1,8
3-month % change, seasonally adjusted 1/	4,3	-1,9	-4,5	-3,5	-2,7	-3,1

1/ Percentage change between the previous three months and the three months ending in the month indicated.

Mining production decreased by 4,6% year-on-year in October 2015. The largest negative contributions were recorded for coal (-15,0% and contributing -4,1 percentage points), iron ore (-18,4% and contributing -3,5 percentage points) and gold (-7,5% and contributing -1,3 percentage points).

PGMs (26,5% and contributing 3,6 percentage points) was a significant positive contributor – see Tables 6 and 7.

Seasonally adjusted mining production increased by 1,8% in October 2015 compared with September 2015. This followed month-on-month changes of -4,0% in September 2015 and -1,1% in August 2015.

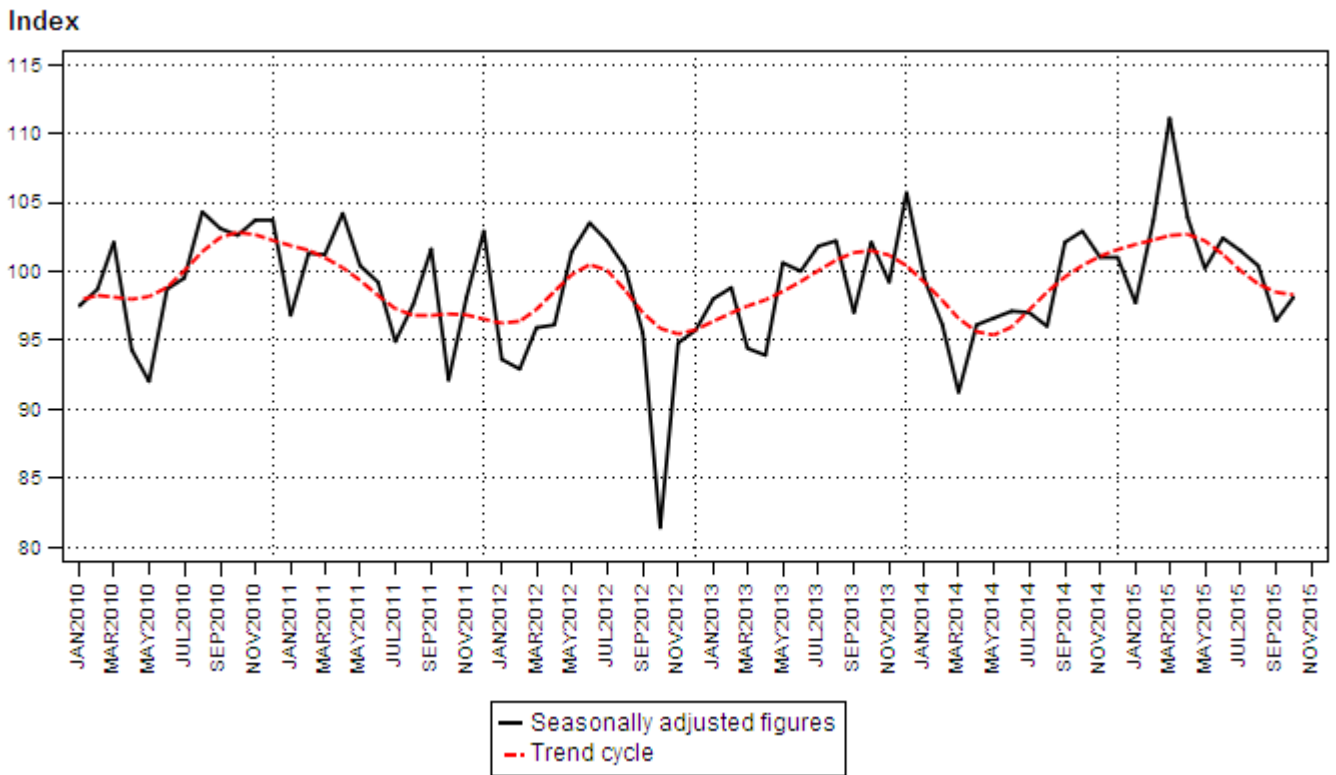
**Table B – Seasonally adjusted index of the volume of mining production for the latest three months by mineral group and mineral (Base: 2010=100)**

Mineral group and mineral	Weight (2012)	May – Jul 2015	Aug – Oct 2015	% change between May – Jul 2015 and Aug – Oct 2015	Contribution (% points) to the % change in total mining production
Gold	21,10	76,7	76,2	-0,7	-0,1
Iron ore	14,46	120,7	114,4	-5,2	-0,9
Chromium ore	2,27	146,1	148,5	1,6	0,1
Copper <sup>1</sup>	1,41	83,8	101,1	20,6	0,2
Manganese ore <sup>1</sup>	2,97	242,6	221,7	-8,6	-0,6
PGMs	19,01	97,8	92,7	-5,2	-1,0
Nickel <sup>1</sup>	1,77	139,7	148,8	6,5	0,2
Other metallic minerals <sup>1</sup>	2,98	88,3	77,6	-12,1	-0,3
Diamonds <sup>1</sup>	2,75	98,2	97,5	-0,7	0,0
Coal	26,45	96,1	93,4	-2,8	-0,7
Building materials	1,54	112,1	114,2	1,9	0,0
Other non-metallic minerals	3,29	75,4	78,4	4,0	0,1
<b>Total</b>	<b>100,00</b>	<b>101,4</b>	<b>98,3</b>	<b>-3,1</b>	<b>-3,1</b>

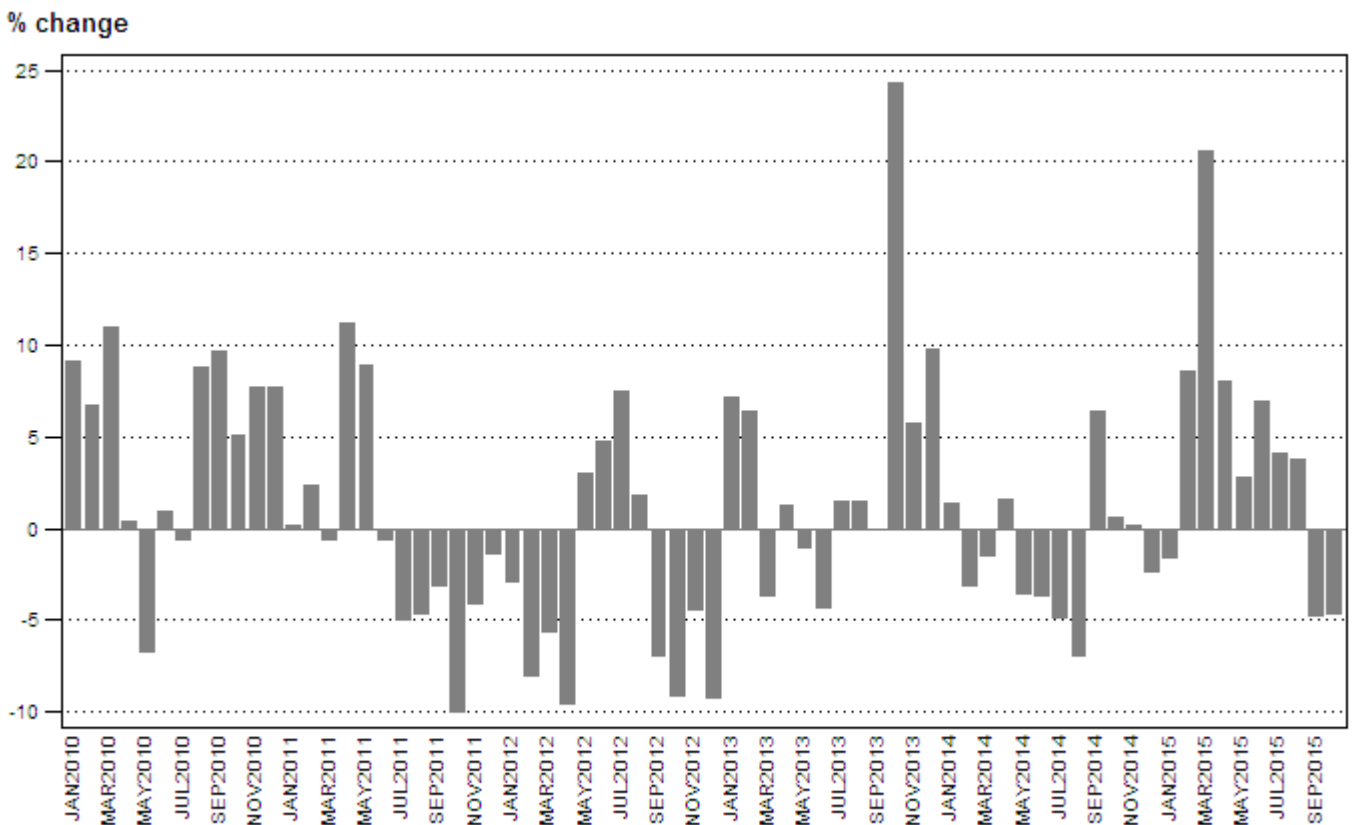
<sup>1</sup> Not seasonally adjusted, because the presence of seasonality is not significant. See notes 4 and 5 on page 11.

Seasonally adjusted mining production decreased by 3,1% in the three months ended October 2015 compared with the previous three months. The main contributors to the 3,1% decrease were PGMs (contributing -1,0 percentage point), iron ore (contributing -0,9 of a percentage point) and coal (contributing -0,7 of a percentage point) – see Table B.

**Figure 1 – Volume of mining production (Base: 2010=100)**



**Figure 2 – Volume of mining production (Base: 2010=100): year-on-year percentage change**



**Sales: results for September 2015**

**Table C – Key growth rates in mineral sales at current prices**

	<b>Apr-15</b>	<b>May-15</b>	<b>Jun-15</b>	<b>Jul-15</b>	<b>Aug-15</b>	<b>Sep-15</b>
Year-on-year % change, unadjusted	2,6	5,7	13,3	-1,3	-1,6	-5,3
Month-on-month % change, seasonally adjusted	-2,1	3,1	-1,0	-5,9	0,0	1,4
3-month % change, seasonally adjusted 1/	3,0	4,7	4,2	0,3	-3,6	-5,1

1/ Percentage change between the previous three months and the three months ending in the month indicated.

Mineral sales decreased by 5,3% year-on-year in September 2015. The largest negative contributions to the decrease of 5,3% were made by the following mineral groups and minerals:

- iron ore (-22,2% and contributing -2,8 percentage points);
- ‘other’ non-metallic minerals (-27,5% and contributing -2,2 percentage points);
- coal (-7,1% and contributing -1,9 percentage points); and
- gold (-9,8% and contributing -1,5 percentage points).

PGMs increased by 17,6% year-on-year and was a significant positive contributor (contributing 3,7 percentage points) – see Tables 12 and 13.

Seasonally adjusted mineral sales at current prices increased by 1,4% in September 2015 compared with August 2015. This followed month-on-month changes of 0,0% in August 2015 and -5,9% in July 2015.

**PJ Lehohla**  
**Statistician-General**

**Tables**

**Table 1 – Index of the volume of mining production (Base: 2010=100)**

Month	2009	2010	2011	2012	2013	2014 1/	2015 1/
Jan	79,0	86,2	86,4	83,9	89,9	91,2	89,7
Feb	82,6	88,1	90,2	83,0	88,3	85,6	93,0
Mar	92,6	102,8	102,2	96,5	93,0	91,6	110,5
Apr	90,0	90,4	100,5	91,0	92,2	93,7	101,2
May	98,1	91,5	99,6	102,6	101,6	98,0	100,7
Jun	102,9	103,8	103,2	108,2	103,5	99,8	106,7
Jul	102,3	101,7	96,6	103,8	105,4	100,3	104,4
Aug	99,1	107,8	102,8	104,6	106,2	98,9	102,7
Sep	99,8	109,5	106,1	98,8	98,8	105,1	100,2
Oct	98,7	103,7	93,3	84,8	105,4	106,0	101,1
Nov	100,7	108,5	104,0	99,4	105,2	105,4	
Dec	98,5	106,1	104,7	95,1	104,4	102,0	
<b>Year</b>	<b>95,4</b>	<b>100,0</b>	<b>99,1</b>	<b>96,0</b>	<b>99,5</b>	<b>98,1</b>	

1/ Preliminary.

**Table 2 – Year-on-year percentage change in the volume of mining production**

Month	2010	2011	2012	2013	2014	2015	2015 year-to-date
Jan	9,1	0,2	-2,9	7,2	1,4	-1,6	-1,6
Feb	6,7	2,4	-8,0	6,4	-3,1	8,6	3,4
Mar	11,0	-0,6	-5,6	-3,6	-1,5	20,6	9,2
Apr	0,5	11,2	-9,5	1,3	1,6	8,0	9,0
May	-6,7	8,9	3,0	-1,0	-3,5	2,8	7,6
Jun	0,9	-0,6	4,8	-4,3	-3,6	6,9	7,5
Jul	-0,5	-5,0	7,5	1,5	-4,8	4,1	7,0
Aug	8,8	-4,6	1,8	1,5	-6,9	3,8	6,5
Sep	9,7	-3,1	-6,9	0,0	6,4	-4,7	5,2
Oct	5,0	-10,0	-9,1	24,3	0,6	-4,6	4,1
Nov	7,7	-4,1	-4,4	5,8	0,2		
Dec	7,7	-1,3	-9,2	9,8	-2,3		
<b>Year</b>	<b>4,8</b>	<b>-0,9</b>	<b>-3,1</b>	<b>3,6</b>	<b>-1,4</b>		

**Table 3 – Seasonally adjusted volume of total mining production**

Month	Index (Base: 2010=100)				Month-on-month % change			
	2012	2013	2014	2015	2012	2013	2014	2015
Jan	93,6	98,0	99,4	97,7	-9,0	2,4	-6,0	-3,3
Feb	92,9	98,8	96,1	103,7	-0,7	0,8	-3,3	6,1
Mar	95,9	94,4	91,2	111,1	3,2	-4,5	-5,1	7,1
Apr	96,1	93,9	96,1	103,9	0,2	-0,5	5,4	-6,5
May	101,4	100,6	96,6	100,2	5,5	7,1	0,5	-3,6
Jun	103,5	100,0	97,1	102,4	2,1	-0,6	0,5	2,2
Jul	102,2	101,8	97,0	101,5	-1,3	1,8	-0,1	-0,9
Aug	100,3	102,2	96,0	100,4	-1,9	0,4	-1,0	-1,1
Sep	95,5	97,0	102,1	96,4	-4,8	-5,1	6,4	-4,0
Oct	81,4	102,1	102,9	98,1	-14,8	5,3	0,8	1,8
Nov	94,8	99,2	101,0		16,5	-2,8	-1,8	
Dec	95,7	105,7	101,0		0,9	6,6	0,0	

**Table 4 – Index of the volume of mining production by mineral group and mineral (Base: 2010=100) 1/**

Mineral group and mineral	Weight (2012)	May-15	Jun-15	Jul-15	Aug-15	Sep-15	Oct-15
Gold	21,10	75,3	84,8	73,6	80,1	83,9	77,8
Iron ore	14,46	128,3	129,9	126,4	112,4	116,9	114,8
Chromium ore	2,27	149,4	159,7	148,1	151,2	163,1	157,5
Copper	1,41	86,6	72,4	92,5	91,9	101,5	110,0
Manganese ore	2,97	235,1	247,8	245,0	213,9	222,6	228,7
PGMs	19,01	90,2	101,0	99,8	101,7	94,7	96,9
Nickel	1,77	135,2	156,2	127,8	157,5	142,1	146,7
Other metallic minerals	2,98	99,9	79,2	85,9	95,7	67,1	70,0
Diamonds	2,75	68,3	128,7	97,7	92,6	73,3	126,7
Coal	26,45	98,4	97,7	104,7	100,6	93,9	94,2
Building materials	1,54	117,7	117,5	125,6	121,3	121,1	125,3
Other non-metallic minerals	3,29	73,3	74,6	77,4	74,1	78,1	83,0
<b>Total</b>	<b>100,00</b>	<b>100,7</b>	<b>106,7</b>	<b>104,4</b>	<b>102,7</b>	<b>100,2</b>	<b>101,1</b>

1/ All index values in this table are preliminary.

**Table 5 – Seasonally adjusted index of the volume of mining production by mineral group and mineral (Base: 2010=100)**

Mineral group and mineral	May-15	Jun-15	Jul-15	Aug-15	Sep-15	Oct-15	Month-on-month % change
Gold	77,2	76,7	76,1	77,4	77,5	73,7	-4,9
Iron ore	118,4	123,1	120,5	115,0	114,8	113,4	-1,2
Chromium ore	142,0	150,1	146,1	146,0	151,4	148,2	-2,1
Copper <sup>1</sup>	86,6	72,4	92,5	91,9	101,5	110,0	8,4
Manganese ore <sup>1</sup>	235,1	247,8	245,0	213,9	222,6	228,7	2,7
PGMs	97,7	99,3	96,4	93,9	89,3	94,8	6,2
Nickel <sup>1</sup>	135,2	156,2	127,8	157,5	142,1	146,7	3,2
Other metallic minerals <sup>1</sup>	99,9	79,2	85,9	95,7	67,1	70,0	4,3
Diamonds <sup>1</sup>	68,3	128,7	97,7	92,6	73,3	126,7	72,9
Coal	95,5	94,1	98,7	98,6	91,3	90,3	-1,1
Building materials	114,0	111,0	111,4	121,7	111,2	109,6	-1,4
Other non-metallic minerals	74,8	75,8	75,5	75,9	79,3	80,0	0,9
<b>Total</b>	<b>100,2</b>	<b>102,4</b>	<b>101,5</b>	<b>100,4</b>	<b>96,4</b>	<b>98,1</b>	<b>1,8</b>

<sup>1</sup> Not seasonally adjusted, because the presence of seasonality is not significant. See notes 4 and 5 on page 11.

**Table 6 – Year-on-year percentage change in the volume of mining production by mineral group and mineral**

Mineral group and mineral	May-15	Jun-15	Jul-15	Aug-15	Sep-15	Oct-15
Gold	-5,2	-2,1	-7,5	-0,1	-1,8	-7,5
Iron ore	-15,5	-11,6	-18,1	-17,3	-17,8	-18,4
Chromium ore	11,2	26,0	16,4	8,9	16,0	9,4
Copper	-4,2	-21,5	7,4	-4,4	17,5	6,6
Manganese ore	20,5	25,5	25,6	2,4	11,0	2,4
PGMs	99,6	84,0	71,8	63,0	22,2	26,5
Nickel	1,0	6,5	-4,6	1,1	6,0	5,5
Other metallic minerals	14,3	-16,9	-4,0	8,4	-29,3	-12,3
Diamonds	-21,3	30,9	10,0	24,0	-38,5	20,1
Coal	-9,9	-5,8	-1,1	-5,0	-12,5	-15,0
Building materials	1,6	-0,2	-1,2	6,7	-2,4	-8,0
Other non-metallic minerals	-4,2	3,3	-9,0	-0,4	-1,8	-3,3
<b>Total</b>	<b>2,8</b>	<b>6,9</b>	<b>4,1</b>	<b>3,8</b>	<b>-4,7</b>	<b>-4,6</b>

**Table 7 – Contribution of each mineral group and mineral to the year-on-year percentage change in the volume of mining production (percentage points)**

Mineral group and mineral	May-15	Jun-15	Jul-15	Aug-15	Sep-15	Oct-15
Gold	-0,9	-0,4	-1,3	0,0	-0,3	-1,3
Iron ore	-3,5	-2,5	-4,0	-3,4	-3,5	-3,5
Chromium ore	0,3	0,8	0,5	0,3	0,5	0,3
Copper	-0,1	-0,3	0,1	-0,1	0,2	0,1
Manganese ore	1,2	1,5	1,5	0,2	0,6	0,2
PGMs	8,7	8,8	7,9	7,6	3,1	3,6
Nickel	0,0	0,2	-0,1	0,0	0,1	0,1
Other metallic minerals	0,4	-0,5	-0,1	0,2	-0,8	-0,3
Diamonds	-0,5	0,8	0,2	0,5	-1,2	0,6
Coal	-2,9	-1,6	-0,3	-1,4	-3,4	-4,1
Building materials	0,0	0,0	0,0	0,1	0,0	-0,2
Other non-metallic minerals	-0,1	0,1	-0,3	0,0	0,0	-0,1
<b>Total</b>	<b>2,8</b>	<b>6,9</b>	<b>4,1</b>	<b>3,8</b>	<b>-4,7</b>	<b>-4,6</b>



**Table 8 – Mineral sales at current prices (R million)**

Month	2009	2010	2011	2012	2013	2014 1/	2015 1/
Jan	17 263,9	19 185,1	25 341,3	28 079,4	28 977,1	32 608,8	27 928,2
Feb	19 906,3	20 408,4	27 573,2	29 335,5	30 361,5	35 488,2	30 601,0
Mar	22 093,9	23 860,1	31 547,4	30 912,0	34 761,4	35 172,2	34 753,8
Apr	20 733,6	23 551,4	27 370,2	26 772,5	31 865,2	31 647,7	32 457,2
May	18 463,5	25 535,2	27 870,5	31 257,0	30 402,1	30 932,4	32 686,9
Jun	20 337,3	25 882,9	33 940,1	33 958,2	35 088,5	31 630,8	35 844,0
Jul	20 019,7	25 588,6	27 947,7	30 899,0	32 847,9	31 517,7	31 110,6
Aug	20 144,0	25 897,8	30 300,9	31 402,3	35 523,4	32 124,1	31 607,1
Sep	20 737,7	27 994,7	35 700,1	30 367,0	34 731,0	35 345,8	33 460,0
Oct	19 909,8	27 535,5	33 393,7	28 258,6	34 544,7	34 101,5	
Nov	20 128,7	27 114,9	35 268,1	29 921,3	34 122,6	32 274,2	
Dec	21 626,2	27 737,9	34 027,5	32 954,5	34 452,5	33 669,9	
<b>Total</b>	<b>241 364,6</b>	<b>300 292,5</b>	<b>370 280,7</b>	<b>364 117,3</b>	<b>397 677,9</b>	<b>396 513,3</b>	

1/ Preliminary.

**Table 9 – Year-on-year percentage change in mineral sales at current prices**

Month	2010	2011	2012	2013	2014	2015	2015 year-to-date
Jan	11,1	32,1	10,8	3,2	12,5	-14,4	-14,4
Feb	2,5	35,1	6,4	3,5	16,9	-13,8	-14,1
Mar	8,0	32,2	-2,0	12,5	1,2	-1,2	-9,7
Apr	13,6	16,2	-2,2	19,0	-0,7	2,6	-6,8
May	38,3	9,1	12,2	-2,7	1,7	5,7	-4,5
Jun	27,3	31,1	0,1	3,3	-9,9	13,3	-1,6
Jul	27,8	9,2	10,6	6,3	-4,0	-1,3	-1,6
Aug	28,6	17,0	3,6	13,1	-9,6	-1,6	-1,6
Sep	35,0	27,5	-14,9	14,4	1,8	-5,3	-2,0
Oct	38,3	21,3	-15,4	22,2	-1,3		
Nov	34,7	30,1	-15,2	14,0	-5,4		
Dec	28,3	22,7	-3,2	4,5	-2,3		
<b>Total</b>	<b>24,4</b>	<b>23,3</b>	<b>-1,7</b>	<b>9,2</b>	<b>-0,3</b>		

**Table 10 – Seasonally adjusted total mineral sales at current prices**

Month	R million				Month-on-month % change			
	2012	2013	2014	2015	2012	2013	2014	2015
Jan	31 908,1	31 742,2	35 959,2	30 460,9	-2,5	-1,6	5,2	-7,9
Feb	31 143,2	32 144,6	37 455,3	32 233,2	-2,4	1,3	4,2	5,8
Mar	28 813,5	33 469,0	33 384,9	33 537,8	-7,5	4,1	-10,9	4,0
Apr	27 862,7	33 193,1	33 057,4	32 848,5	-3,3	-0,8	-1,0	-2,1
May	31 367,2	30 717,5	30 921,0	33 860,3	12,6	-7,5	-6,5	3,1
Jun	31 709,4	32 598,9	29 669,0	33 518,8	1,1	6,1	-4,0	-1,0
Jul	31 992,7	33 845,4	31 689,9	31 553,9	0,9	3,8	6,8	-5,9
Aug	30 833,5	34 582,5	32 476,2	31 564,4	-3,6	2,2	2,5	0,0
Sep	28 721,5	33 256,8	33 795,8	32 007,2	-6,8	-3,8	4,1	1,4
Oct	28 481,1	33 821,3	33 629,2		-0,8	1,7	-0,5	
Nov	29 511,5	34 231,1	32 187,0		3,6	1,2	-4,3	
Dec	32 253,0	34 196,2	33 061,8		9,3	-0,1	2,7	

**Table 11 – Mineral sales at current prices by mineral group and mineral (R million) 1/**

Mineral group and mineral	Apr-15	May-15	Jun-15	Jul-15	Aug-15	Sep-15
Gold	4 892,9	4 916,0	5 923,6	4 711,7	4 916,6	4 891,7
Iron ore	3 416,4	3 095,5	3 988,0	3 424,8	2 593,9	3 446,2
Chromium ore	1 383,2	1 475,1	1 430,6	1 402,5	1 635,9	1 548,4
Copper	348,4	499,5	605,5	294,0	287,9	482,2
Manganese ore	1 126,7	1 052,4	1 040,8	1 180,3	1 074,5	1 125,4
PGMs	8 947,7	8 839,0	8 797,1	8 042,3	7 865,8	8 677,4
Nickel	856,5	744,4	903,9	458,7	503,0	674,1
Other metallic minerals	791,4	748,4	1 035,5	804,7	1 208,0	865,3
Coal	8 514,0	8 039,5	8 849,6	8 782,5	8 911,5	8 765,6
Building materials	865,0	935,8	873,1	925,2	885,4	924,3
Other non-metallic minerals	1 315,1	2 341,2	2 396,2	1 083,8	1 724,7	2 059,3
<b>Total</b>	<b>32 457,2</b>	<b>32 686,9</b>	<b>35 844,0</b>	<b>31 110,6</b>	<b>31 607,1</b>	<b>33 460,0</b>

1/ All values in this table are preliminary.

**Table 12 – Year-on-year percentage change in mineral sales at current prices by mineral group and mineral**

Mineral group and mineral	Apr-15	May-15	Jun-15	Jul-15	Aug-15	Sep-15
Gold	-10,9	0,4	11,8	-19,2	-6,9	-9,8
Iron ore	-40,2	-36,9	-22,6	-24,0	-19,6	-22,2
Chromium ore	47,1	9,5	14,4	38,3	42,2	36,7
Copper	-22,7	-1,2	22,8	-8,2	-46,1	-10,4
Manganese ore	-22,8	-20,7	-14,4	8,6	-23,1	-16,2
PGMs	57,3	70,4	72,4	32,7	27,1	17,6
Nickel	41,6	-7,6	20,6	-51,9	-47,3	-4,3
Other metallic minerals	33,4	-1,9	-0,1	-11,5	25,0	-28,8
Coal	0,2	-2,3	4,3	1,8	-8,6	-7,1
Building materials	8,1	6,5	6,6	0,7	3,4	2,2
Other non-metallic minerals	-6,4	12,0	18,2	-16,2	-5,4	-27,5
<b>Total</b>	<b>2,6</b>	<b>5,7</b>	<b>13,3</b>	<b>-1,3</b>	<b>-1,6</b>	<b>-5,3</b>

**Table 13 – Contribution of each mineral group and mineral to the year-on-year percentage change in mineral sales at current prices (percentage points)**

Mineral group and mineral	Apr-15	May-15	Jun-15	Jul-15	Aug-15	Sep-15
Gold	-1,9	0,1	2,0	-3,6	-1,1	-1,5
Iron ore	-7,3	-5,9	-3,7	-3,4	-2,0	-2,8
Chromium ore	1,4	0,4	0,6	1,2	1,5	1,2
Copper	-0,3	0,0	0,4	-0,1	-0,8	-0,2
Manganese ore	-1,1	-0,9	-0,6	0,3	-1,0	-0,6
PGMs	10,3	11,8	11,7	6,3	5,2	3,7
Nickel	0,8	-0,2	0,5	-1,6	-1,4	-0,1
Other metallic minerals	0,6	0,0	0,0	-0,3	0,8	-1,0
Coal	0,1	-0,6	1,2	0,5	-2,6	-1,9
Building materials	0,2	0,2	0,2	0,0	0,1	0,1
Other non-metallic minerals	-0,3	0,8	1,2	-0,7	-0,3	-2,2
<b>Total</b>	<b>2,6</b>	<b>5,7</b>	<b>13,3</b>	<b>-1,3</b>	<b>-1,6</b>	<b>-5,3</b>

## Survey information

<b>Introduction</b>	1	Statistics South Africa (Stats SA) publishes monthly mining production indices and mineral sales based on the information furnished by the Department of Mineral Resources (DMR). Data in this release are presented by mineral group and mineral.
	2	In accordance with international practice, the indices are usually re-based every five years to a new base year. The current base year of the index of the volume of mining production is 2010=100. Both actual and seasonally adjusted figures are presented.
	3	Due to mining production figures being available earlier than mineral sales figures, mining production indices are published one month earlier than mineral sales.
	4	The value of mineral sales is calculated, in general, on a free-on-rail/free-on-board basis.
	5	In order to improve timeliness, some information for the current month had to be estimated due to late response. These estimates will be revised in future statistical release(s) as soon as more up-to-date information is available.
<b>Purpose of the survey</b>	6	The monthly mining production and sales survey is conducted by the DMR, covering all mining establishments operating in the South African economy. The results of this survey are used to calculate the volume of mining production indices in order to estimate the gross domestic product (GDP) and its components, which in turn are used to develop and monitor government policy.
<b>Scope of the survey</b>	7	This survey covers mining establishments conducting activities regarding the extracting, dressing and beneficiating of minerals occurring naturally, for example solids such as coal and ores.
<b>Classification</b>	8	The 1993 edition of the <i>Standard Industrial Classification of all Economic Activities</i> (SIC), Fifth Edition, Report No. 09-90-02, was used to classify the statistical units in the survey. The SIC is based on the 1990 <i>International Standard Industrial Classification of all Economic Activities</i> (ISIC) with suitable adaptations for local conditions. Each statistical unit is classified to an industry which reflects the predominant activity of the establishment. Statistics in this publication are presented by mineral group and mineral.
<b>Statistical unit</b>	9	The statistical unit for the collection of information is the mining establishment. An establishment is the smallest economic unit that functions as a separate entity.
<b>Related publications</b>	10	Users may also wish to refer to the following publications which are available from Stats SA – <ul style="list-style-type: none"> <li>• <i>Bulletin of Statistics</i> issued quarterly; and</li> <li>• <i>South African Statistics</i> issued annually.</li> </ul>
<b>Rounding-off of figures</b>	11	The figures in the tables have, where necessary, been rounded off to the nearest digit shown. There may, therefore, be slight discrepancies between the sums of the constituent items and the totals shown.
<b>Historical data and past publications</b>	12	Historical mining data and past publications are available on the Stats SA website. Click on the following link ( <a href="#">Time series data</a> ) or ( <a href="#">Past publications</a> ) to access the data and releases electronically.

**Technical notes**

- Index of the volume of mining production**      1      The index of the volume of mining production, also known as the production index, is a statistical measure of the change in the volume of production. The production index of a mineral group is the ratio between the volume of production of a mineral group in a given period and the volume of production of the same mineral group in the base period. The current base period is 2010. The production in the base period is set at 100.
- Index weighting**      2      The weight of a mineral group is the ratio of the sales of a mineral group to the total sales of the mining industry. The weight of a mineral group reflects the importance of the mineral group in the total mining industry. The weights change over time due to quality improvements and changes in relative prices. New weights will be calculated annually.

3      The weights, which are used to aggregate minerals to mineral groups and mineral groups to total mining, are based on the value of sales derived from detailed information for a specific year supplied by the Department of Mineral Resources (DMR). The latest weights are based on 2012 data.
- Seasonal adjustment**      4      Seasonally adjusted estimates are generated each month using the X-12-ARIMA Seasonal Adjustment Program developed by the US Bureau of the Census, 1968. Seasonal adjustment is a means of removing the estimated effects of normal seasonal variation from the series so that the effects of other influences on the series can be recognised more clearly. Seasonal adjustment does not aim to remove irregular or non-seasonal influences which may be present in any particular month.

5      Influences that are volatile or unsystematic can still make it difficult to interpret the movement of the series even after adjustment for seasonal variations. This means the month-to-month movements of seasonally adjusted estimates may not be reliable indicators of trend behaviour. The X-12-ARIMA procedure for mining production and sales is described in more detail on the Stats SA website at:  
[http://www.statssa.gov.za/publications/P2041/Seasonal\\_adjustment\\_X12.pdf](http://www.statssa.gov.za/publications/P2041/Seasonal_adjustment_X12.pdf)
- Trend cycle**      6      The trend is the long-term pattern or movement of a time series. The X-12-ARIMA Seasonal Adjustment Program is used for smoothing seasonally adjusted estimates to estimate the underlying trend cycle.
- Reliability of estimates**      7      Figures for the latest 2 calendar years are preliminary.
- Month-on-month percentage change**      8      The month-on-month percentage change in a variable for any given month is the change between that month and the previous month, expressed as a percentage of the latter.
- Year-on-year percentage change**      9      The year-on-year percentage change in a variable for any given period is the change between that period and the corresponding period of the previous year, expressed as a percentage of the latter.
- Index contribution (percentage points)**      10      The contribution (percentage points) of a mineral group or mineral to the percentage change in the total mining production for a given period is calculated by multiplying the difference in the index for each mineral group or mineral by the weight of the mineral group or mineral and then dividing by the previous period's total index.
- Sales contribution (percentage points)**      11      The contribution (percentage points) to the percentage change in total sales for a given period is calculated by multiplying the percentage change of each mineral group or mineral with its percentage contribution to total mineral sales of the previous period, divided by 100.

**Glossary**

<b>Free-on-rail</b>	Free-on-rail relates to goods sold on the local market where no railage or road transport costs are involved.																
<b>Free-on-board</b>	Free-on-board relates to goods destined for the export market. Railage, road transport and docking charges are involved but no charges are made for transport by sea.																
<b>Industry</b>	An industry consists of a group of establishments engaged in the same or similar kinds of economic activity. Industries are defined in the <i>System of National Accounts</i> (SNA) in the same way as in the <i>Standard Industrial Classification of all Economic Activities</i> (SIC), Fifth Edition of January 1993.																
<b>PGMs – Platinum group metals</b>	Platinum group metals include platinum, iridium, osmiridium, palladium, rhodium, ruthenium and osmium.																
<b>Sales</b>	Sales are the total value of sales of primary minerals at the first point of saleability by the mining establishment.																
<b>Symbols and abbreviations</b>	<table border="0"> <tr> <td>DMR</td> <td>Department of Mineral Resources</td> </tr> <tr> <td>GDP</td> <td>Gross domestic product</td> </tr> <tr> <td>ISIC</td> <td>International Standard Industrial Classification</td> </tr> <tr> <td>PGMs</td> <td>Platinum group metals</td> </tr> <tr> <td>SIC</td> <td>Standard Industrial Classification of all Economic Activities</td> </tr> <tr> <td>SNA</td> <td>System of National Accounts</td> </tr> <tr> <td>Stats SA</td> <td>Statistics South Africa</td> </tr> <tr> <td>*</td> <td>Revised</td> </tr> </table>	DMR	Department of Mineral Resources	GDP	Gross domestic product	ISIC	International Standard Industrial Classification	PGMs	Platinum group metals	SIC	Standard Industrial Classification of all Economic Activities	SNA	System of National Accounts	Stats SA	Statistics South Africa	*	Revised
DMR	Department of Mineral Resources																
GDP	Gross domestic product																
ISIC	International Standard Industrial Classification																
PGMs	Platinum group metals																
SIC	Standard Industrial Classification of all Economic Activities																
SNA	System of National Accounts																
Stats SA	Statistics South Africa																
*	Revised																

**Technical enquiries**

<b>JP Terblanche</b>	Telephone number: (012) 310 2965 Email: <a href="mailto:juan-pierret@statssa.gov.za">juan-pierret@statssa.gov.za</a>
<b>Martin Kohler</b>	Telephone number: (012) 444 3734 Email: <a href="mailto:martin.kohler@dmr.gov.za">martin.kohler@dmr.gov.za</a>

## General information

Stats SA publishes approximately 300 different statistical releases each year. It is not economically viable to produce them in more than one of South Africa's eleven official languages. Since the releases are used extensively, not only locally but also by international economic and social-scientific communities, Stats SA releases are published in English only.

Stats SA has copyright on this publication. Users may apply the information as they wish, provided that they acknowledge Stats SA as the source of the basic data wherever they process, apply, utilise, publish or distribute the data and also that they specify that the relevant application and analysis (where applicable) result from their own processing of the data.

## Advance release calendar

An advance release calendar is disseminated on [www.statssa.gov.za](http://www.statssa.gov.za)

## Stats SA products

A complete set of Stats SA publications is available at the Stats SA Library and the following libraries:

National Library of South Africa, Pretoria Division  
National Library of South Africa, Cape Town Division  
Natal Society Library, Pietermaritzburg  
Library of Parliament, Cape Town  
Bloemfontein Public Library  
Johannesburg Public Library  
Eastern Cape Library Services, King William's Town  
Central Regional Library, Polokwane  
Central Reference Library, Mbombela  
Central Reference Collection, Kimberley  
Central Reference Library, Mmabatho

Stats SA also provides a subscription service.

## Electronic services

A large range of data is available via online services. For more detail about our electronic services, contact Stats SA's user information service at (012) 310 8600.

You can visit us on the Internet at: [www.statssa.gov.za](http://www.statssa.gov.za)

## General enquiries

User information services	Telephone number: (012) 310 8600 Email address: <a href="mailto:info@statssa.gov.za">info@statssa.gov.za</a>
Orders/subscription services	Telephone number: (012) 310 8044 Email address: <a href="mailto:magdaj@statssa.gov.za">magdaj@statssa.gov.za</a>
Postal address	Private Bag X44, Pretoria, 0001

*Produced by Stats SA*