

Mining: Production and sales (preliminary)

October 2004

**Embargoed until:
7 December 2004
11:00**

**Published jointly by
Statistics South Africa and the Department of Minerals and Energy**

Table A – Selected key figures regarding mining production for October 2004

Actual estimates

	October 2004	% change between October 2003 and October 2004	% change between August 2003 to October 2003 and August 2004 to October 2004	% change between January 2003 to October 2003 and January 2004 to October 2004
Index of the physical volume of mining production (2000=100)				
Gold	81,2	-6,5%	-6,9%	-7,0%
Non-gold minerals	128,6	+3,5%	+6,4%	+9,7%
Total	116,4	+1,7%	+3,7%	+6,1%

Seasonally adjusted estimates

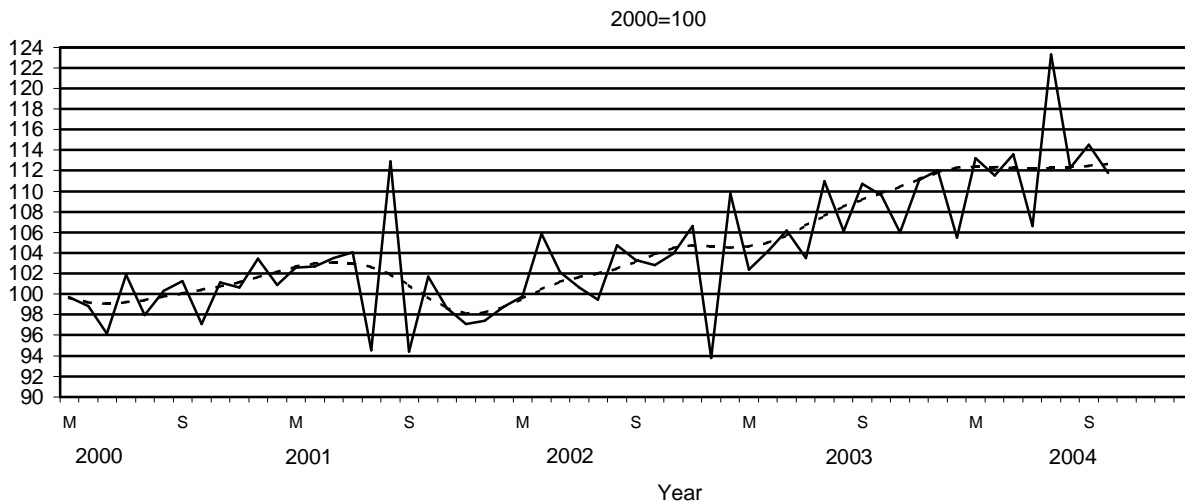
	October 2004	% change between September 2004 and October 2004	% change between May 2004 to July 2004 and August 2004 to October 2004
Index of the physical volume of mining production (2000=100)			
Gold	80,1	+2,0%	-3,2%
Non-gold minerals	122,7	-3,4%	-1,0%
Total	111,8	-2,4%	-1,4%

Key findings regarding mining production for 2004

Mining production decreases

The total mining production for the three months ended October 2004, after seasonal adjustment, decreased by 1,4% compared with the previous three months. This decrease was due to a seasonally adjusted decrease of 3,2% in the production of gold and 1,0% in the production of non-gold minerals during the three months ended October 2004 compared with the previous three months. The seasonally adjusted decrease of 1,0% in the production of non-gold minerals was mainly due to a decrease in the production of PGM's (-2,7 percentage points) and coal (-0,6 of a percentage point). However, this decrease was counteracted by a seasonally adjusted increase of diamonds (+1,7 percentage points) and other non-metals (+1,3 percentage points) (see table 6).

Figure 1 - Indices of physical volume of total mining production including gold



Source: Stats SA _____ Seasonally adjusted - - - - Trend cycle

Table B – Selected key figures regarding mineral sales for September 2004

Actual estimates

	September 2004 R million	% change between September 2003 and September 2004	% change between July 2003 to September 2003 and July 2004 to September 2004	% change between January 2003 to September 2003 and January 2004 to September 2004
Mineral sales				
Gold	2 513,6	-13,8%	-15,5%	-11,4%
Non-gold minerals	8 671,0	+22,3%	+12,5%	+10,4%
Total	11 184,6	+11,8%	+4,8%	+4,2%

Seasonally adjusted estimates

	September 2004 R million	% change between August 2004 and September 2004	% change between April 2004 to June 2004 and July 2004 to September 2004
Mineral sales			
Gold	2 349,2	+3,0%	-11,4%
Non-gold minerals	8 506,6	+12,5%	+3,3%
Total	10 855,8	+10,3%	-0,3%

Key findings regarding mineral sales as at the end of September 2004

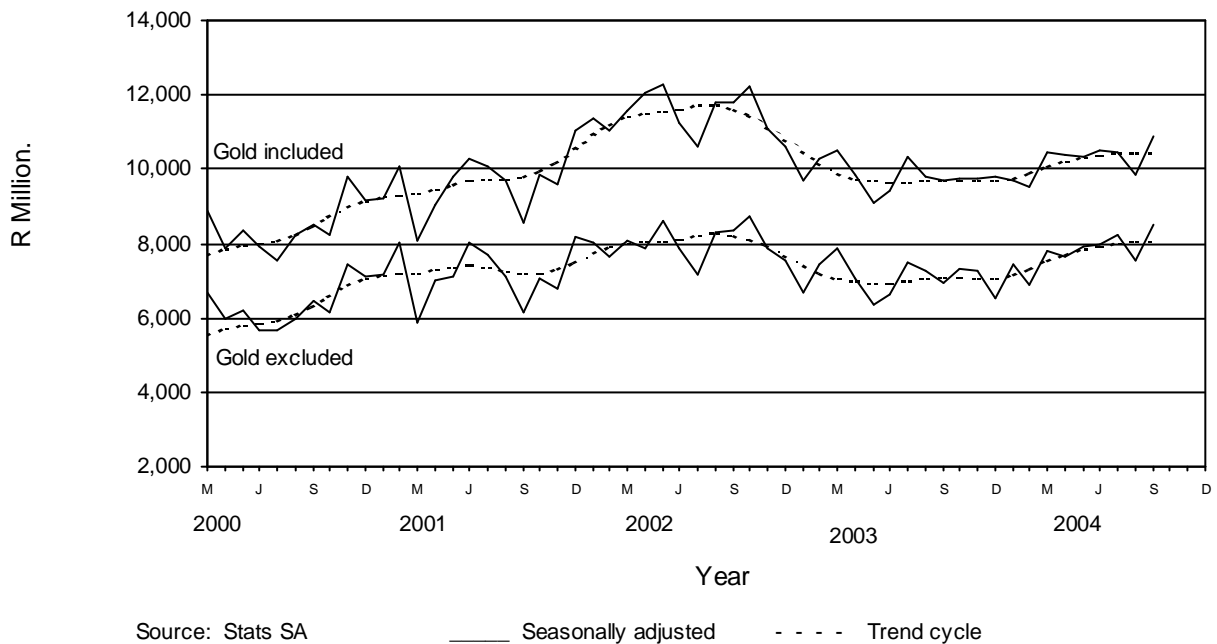
Mineral sales decrease

The seasonally adjusted value of mineral sales at current prices for the third quarter of 2004 reflected a slight decrease of 0,3% compared with the second quarter of 2004. However, the actual value of mineral sales at current prices for the third quarter of 2004 increased by 4,8% compared with the third quarter of 2003.

The decrease of 0,3% in the seasonally adjusted value of mineral sales for the third quarter of 2004 compared with the second quarter of 2004 can be attributed to a decrease of 11,4% (-R879,9 million) in sales of gold during the same period. However, this decrease was counteracted by an increase of 3,3% (+R775,2 million) in sales of non-gold minerals during the same period.

The major contributors to the increase of 4.8% in the actual value of mineral sales at current prices for the third quarter of 2004 compared with the third quarter of 2003 were PGM's (+4,0 percentage points or +R1 196,7 million) and other non-metals (+2,9 percentage points or +R867,8 million). However, this increase was counteracted by a decrease in sales of gold (-4,3 percentage points or -R1 281,6 million) (see table 12).

Figure 2 - Total value of mineral sales including gold



PP
P J Lehohla
Statistician-General

PP
S Nogxina
Director-General
Department of Minerals and Energy

Contents

Notes 5

Tables

Table 1 Index of the physical volume of mining production including gold (Base 2000=100) 6

Table 2 Seasonally adjusted indices of mining production including gold (Base 2000=100) 6

Table 3 Index of the physical volume of mining production excluding gold (Base 2000=100) 7

Table 4 Seasonally adjusted indices of mining production excluding gold (Base 2000=100) 7

Table 5 Indices of physical volume of mining production according to mining divisions, mineral groups and minerals (Base 2000=100) 8

Table 6 Contribution of the mining divisions to the total mining production (Base 2000=100) 8

Table 7 Total value of mineral sales including gold (R million) 9

Table 8 Seasonally adjusted value of mineral sales including gold (R million) 9

Table 9 Total value of mineral sales excluding gold (R million) 10

Table 10 Seasonally adjusted value of mineral sales excluding gold (R million) 10

Table 11 Total value of mineral sales according to mining divisions, mineral groups and minerals (R million) 11

Table 12 Contribution of the mining divisions to the total value of mineral sales 11

Explanatory notes 12

Glossary 14

General information 15

Notes

Forthcoming issue	Issue	Expected date of publication
--------------------------	--------------	-------------------------------------

	November 2004	11 January 2005
--	---------------	-----------------

Purpose of the survey	The monthly mining production and sales survey is a survey conducted by the Minerals Bureau, covering all mining establishments operating in the South African economy. The results of this survey are used to calculate physical volume of mining production indices in order to estimate the gross domestic product (GDP) and its components, which in turn are used to develop and monitor Government policy.
------------------------------	--

Table 1 - Index of the physical volume of mining production including gold (Base 2000=100)

Month	1999	2000	2001	2002	2003*	2004*
January	92,6	93,8	95,0	89,0	85,1	100,7
February	99,0	99,3	96,8	94,2	101,7	97,4
March	104,8	100,0	102,3	99,1	101,8	112,8
April	96,2	95,0	98,9	102,0	101,0	108,3
May	104,5	95,7	103,6	102,9	107,1	115,0
June	103,7	106,8	108,4	104,1	108,6	111,6
July	102,5	96,9	93,5	99,0	110,7	122,4
August	98,4	102,1	115,2	107,2	109,1	115,5
September	104,4	104,9	98,4	108,1	114,6	118,9
October	104,2	100,0	105,1	106,7	114,5	116,4 1/
November	107,0	105,5	102,6	107,5	108,6	
December	100,9	100,2	97,2	107,0	113,5	
Year	101,5	100,0	101,4	102,2	106,4	

1/ Preliminary.

* Revised.

Table 2 - Seasonally adjusted indices of mining production including gold (Base 2000=100)

Month	1999	2000	2001	2002	2003	2004
January	98,4	103,2	105,2	98,0	93,8	112,0
February	100,1	103,6	101,9	100,1	109,8	105,5
March	101,9	99,6	102,2	99,3	102,4	113,2
April	97,3	98,6	102,4	105,6	104,2	111,5
May	103,7	95,5	103,4	102,3	106,2	113,6
June	98,1	101,7	103,1	99,3	103,5	106,6
July	102,7	97,4	93,9	99,0	111,0	123,3
August	96,0	99,9	112,4	104,2	106,1	112,3
September	99,6	103,6	96,5	105,3	110,7	114,5
October	100,5	96,2	100,8	102,3	109,6	111,8
November	102,8	101,7	99,4	104,8	106,0	
December	100,5	99,3	95,0	104,8	111,1	

Table 3 - Index of the physical volume of mining production excluding gold (Base 2000=100)

Month	1999	2000	2001	2002	2003*	2004*
January	90,6	94,4	98,3	89,6	85,7	110,0
February	96,1	96,4	98,6	95,8	107,3	103,6
March	98,6	97,9	104,4	101,0	106,2	123,5
April	91,6	94,1	102,2	105,3	106,3	118,4
May	105,1	96,6	108,9	107,0	114,7	126,6
June	100,7	107,5	112,5	107,3	116,4	121,4
July	103,5	97,6	93,7	102,4	118,8	136,7
August	97,1	101,7	124,5	111,2	116,3	126,6
September	100,6	105,1	99,7	111,4	122,9	131,5
October	104,6	100,6	110,2	111,9	124,2	128,6 1/
November	107,7	107,4	106,8	113,3	116,2	
December	97,2	100,8	97,7	111,2	123,3	
Year	99,5	100,0	104,8	105,6	113,2	

1/ Preliminary.

* Revised.

Table 4 - Seasonally adjusted indices of mining production excluding gold (Base 2000=100)

Month	1999	2000	2001	2002	2003	2004
January	95,9	103,7	108,9	98,7	94,4	122,8
February	98,1	101,2	104,5	102,8	117,2	113,6
March	98,2	98,3	105,0	101,8	107,3	124,3
April	93,5	97,7	106,0	109,3	109,8	122,0
May	102,6	95,1	107,5	105,4	112,8	124,1
June	95,8	101,9	106,4	101,7	110,2	115,2
July	102,4	97,3	93,2	101,7	118,8	137,5
August	95,5	99,9	121,8	108,2	113,2	123,2
September	97,9	105,4	98,9	109,4	119,3	127,0
October	99,6	95,5	104,5	106,3	117,9	122,7
November	102,9	103,1	103,0	110,1	113,0	
December	99,8	101,0	96,0	109,4	121,2	

Table 5 - Indices of physical volume of mining production according to mining divisions, mineral groups and minerals (Base 2000=100)

Minerals	Weights	2003	Actual indices			Seasonally adjusted indices		
			October 2004	September 2004*	October 2003	October 2004	September 2004	October 2003
Total, gold included	100,0	106,3	116,4	118,9	114,5	111,8	114,5	109,6
Total, gold excluded	74,3	113,1	128,6	131,5	124,2	122,7	127,0	117,9
Gold	25,7	86,7	81,2	82,8	86,8	80,1	78,5	85,7
Iron ore	3,1	114,6	120,0	112,0	124,4	113,9	123,2	117,9
Chrome	1,1	111,1	122,0	118,4	120,0	113,8	113,5	111,6
Copper	1,6	88,3	74,0	73,2	93,6	69,2	73,5	86,6
Manganese ore	1,3	93,4	116,8	111,2	90,4	116,2	114,4	89,9
PGM's	27,6	128,8	147,2	152,0	145,6	140,0	143,8	138,2
Nickel	2,0	112,0	101,2	102,0	105,2	104,9	102,7	108,1
Other metallic minerals	2,9	84,0	87,6	86,8	77,6	89,4	88,8	78,9
Diamonds	8,3	117,5	151,6	163,2	119,2	147,9	157,4	114,9
Coal	20,0	105,6	111,2	110,0	120,0	103,6	107,1	112,0
Building materials	2,6	94,3	116,8	122,4	105,6	107,8	111,4	97,5
Other non-metallic minerals	3,8	81,4	124,4	130,4	82,4	123,1	129,1	81,4

* Revised.

Table 6 - Contribution of the mining divisions to the total mining production (Base 2000=100)

Mining division	Percentage contribution to the total mining production using the weights	Average seasonally adjusted Production index for August 2004 to October 2004	Quarterly percentage change of August 2004 to October 2004 compared with the preceding three months	Contribution (percentage points) to the percentage change in the total mining production 1/
Gold	25,7	79,7	-3,2	-0,8
Non-gold minerals				
Iron ore	3,1	113,9	-5,8	-0,2
Copper	1,6	70,7	-9,4	-0,2
Manganese ore	1,3	115,5	4,1	0,1
Chromium	1,1	114,7	-4,6	-0,1
PGM's	27,6	142,6	-9,7	-2,7
Nickel	2,0	105,7	-3,3	-0,1
Other metallic minerals	2,9	86,7	6,7	0,2
Diamonds	8,4	145,8	19,8	1,7
Coal	20,0	106,7	-3,0	-0,6
Building materials	2,6	111,5	-0,1	0,0
Other non-metallic minerals	3,8	122,1	32,9	1,3
Total non-gold minerals	74,3	124,3	-1,0	-0,6
Total minerals	100	112,9	-1,4	-1,4

1/ The contribution is calculated by multiplying the quarterly percentage change of each mining division with its corresponding weight in the base year, divided by 100.

Table 7 - Total value of mineral sales including gold (R million)

Month	1999	2000	2001	2002	2003*	2004
January	6 098,8	6 244,1	9 241,5	11 387,0	9 868,8	9 799,2
February	5 763,6	7 115,7	9 711,7	10 634,4	10 236,5	9 441,6
March	6 445,1	8 958,5	8 134,9	11 639,2	9 829,3	10 156,7
April	5 706,5	7 521,3	8 554,2	11 194,9	9 294,1	9 807,6
May	5 702,9	8 222,7	9 675,9	12 145,3	9 104,1	10 345,4
June	6 391,3	8 222,5	10 640,7	11 637,2	9 745,9	10 814,5
July	5 996,1	7 640,3	10 146,3	10 779,9	10 403,7	10 638,3
August	6 852,9	8 223,4	9 586,4	11 633,5	9 612,0	9 638,5
September	6 548,3	8 568,9	8 711,5	12 115,1	10 008,1	11 184,6 1/
October	6 005,9	8 317,6	9 999,6	12 514,2	9 989,4	
November	7 573,0	9 828,5	9 627,7	11 059,4	9 535,8	
December	7 346,9	9 474,9	11 327,7	10 764,4	9 899,4	
Year	76 431,3	98 338,4	115 358,1	137 504,5	117 527,1	

1/ Preliminary.

* Revised.

Table 8 - Seasonally adjusted value of mineral sales including gold (R million)

Month	1999	2000	2001	2002	2003	2004
January	5 979,7	6 159,2	9 125,9	11 298,8	9 670,4	9 674,2
February	5 886,0	7 181,4	9 809,9	10 778,6	10 306,6	9 534,5
March	6 519,5	9 754,3	8 212,1	11 833,9	10 510,7	10 475,2
April	5 915,5	7 768,6	8 962,2	11 914,0	9 841,4	10 394,8
May	5 818,9	8 281,2	9 723,4	12 149,9	9 091,5	10 350,3
June	6 268,8	7 949,1	10 330,8	11 213,0	9 407,9	10 523,4
July	5 838,9	7 438,0	10 066,1	10 698,4	10 343,4	10 464,1
August	6 810,8	8 277,1	9 636,3	11 772,2	9 816,2	9 843,9
September	6 781,2	8 586,6	8 630,8	11 980,1	9 714,1	10 855,8
October	5 935,4	8 351,3	9 857,5	12 180,6	9 748,1	
November	7 664,2	9 932,1	9 752,7	11 286,7	9 762,3	
December	7 151,3	9 071,1	10 897,1	10 498,7	9 797,9	

Table 9 - Total value of mineral sales excluding gold (R million)

Month	1999	2000	2001	2002	2003*	2004
January	4 033,9	4 476,9	7 181,9	8 002,3	6 744,1	7 459,3
February	3 801,6	4 963,8	7 720,8	7 368,2	7 452,6	6 905,3
March	3 938,7	6 688,4	5 912,0	8 110,9	7 140,7	7 471,1
April	3 802,4	5 790,2	6 748,0	7 481,9	6 815,2	7 346,7
May	3 826,7	6 166,9	7 139,7	8 619,3	6 477,2	8 007,0
June	4 413,3	5 908,5	8 245,9	8 035,5	6 759,5	8 043,7
July	4 061,6	5 700,6	7 779,6	7 344,7	7 613,1	8 466,0
August	4 956,0	5 892,6	6 942,5	8 065,2	7 052,7	7 340,3
September	4 480,8	6 479,6	6 219,3	8 562,1	7 092,3	8 671,0 1/
October	3 947,8	6 047,1	6 971,4	8 711,8	7 345,5	
November	5 038,1	7 529,4	6 953,1	7 981,8	7 154,9	
December	5 139,7	7 422,4	8 532,3	7 834,8	6 826,2	
Year	51 440,6	73 066,4	86 346,5	96 118,5	84 474,0	

1/ Preliminary.

* Revised.

Table 10 - Seasonally adjusted value of mineral sales excluding gold (R million)

Month	1999	2000	2001	2002	2003	2004
January	3 934,2	4 403,3	7 099,6	8 003,4	6 654,9	7 426,1
February	3 806,9	4 931,4	7 751,3	7 407,2	7 432,1	6 909,9
March	4 044,8	7 540,4	6 043,6	8 376,5	7 859,5	7 812,0
April	3 871,9	5 844,5	6 923,5	7 719,8	7 068,3	7 667,6
May	3 851,1	6 130,1	7 077,9	8 487,4	6 360,3	7 920,8
June	4 257,8	5 679,9	8 047,0	7 841,3	6 637,2	7 957,0
July	4 002,3	5 546,7	7 701,0	7 224,6	7 502,2	8 251,0
August	4 979,0	6 021,2	7 073,8	8 287,6	7 297,3	7 563,0
September	4 724,1	6 532,9	6 209,0	8 579,5	6 961,4	8 506,6
October	4 072,0	6 264,9	7 060,5	8 672,9	7 318,8	
November	5 055,0	7 568,0	6 994,7	8 079,0	7 260,8	
December	4 929,5	6 985,6	8 016,0	7 428,4	6 546,7	

Table 11 – Total value of mineral sales according to mining divisions, mineral groups and minerals (R million)

Minerals	2003	Actual value			Seasonally adjusted value		
		September 2004	August * 2004	September 2003	September 2004	August 2004	September 2003
Total, gold included	117 527,1	11 184,6	9 638,5	10 008,1	10 855,8	9 843,9	9 714,1
Total, gold excluded	84 474,0	8 671,0	7 340,3	7 092,3	8 506,6	7 563,0	6 961,4
Gold	33 053,0	2 513,7	2 298,2	2 915,8	2 349,2	2 280,9	2 752,7
Iron ore	4 191,0	395,2	371,8	361,1	420,3	385,7	390,2
Chrome	1 151,6	136,1	121,5	102,5	129,8	126,6	97,8
Copper	1 641,3	193,8	156,9	112,5	197,9	167,2	114,9
Manganese ore	1 467,5	193,0	167,9	78,7	178,0	162,9	73,2
PGM's	28 823,9	3 241,4	2 672,0	2 798,6	3 000,3	2 980,3	2 605,9
Nickel	2 729,2	289,6	315,1	195,1	300,4	290,2	202,7
Other metallic minerals	2 946,7	216,6	168,4	158,0	224,7	153,2	162,5
Coal	26 734,1	2 281,5	2 437,4	2 242,9	2 233,3	2 260,7	2 205,0
Building materials	3 546,5	354,3	350,0	371,7	334,3	334,0	350,8
- Granite or norite	766,5	35,1	40,6	126,3	31,8	37,5	117,1
- Lime and limestone	1 207,9	110,7	106,5	105,8	106,2	104,8	101,5
- Other building material	1 572,2	208,5	202,9	139,6	196,3	191,7	132,2
Other non-metallic minerals	11 242,0	1 369,3	579,5	671,2	1 487,6	702,2	758,4

* Revised.

Table 12 - Contribution of the mining divisions to the total value of mineral sales

Mining division	Percentage contribution to total mineral sales during July 2003 to September 2003	Percentage change between July 2003 to September 2003 and July 2004 to September 2004	Contribution (percentage points) to the percentage change in the total value of mineral sales 1/	Difference in sales of mining divisions between July 2003 to September 2003 and July 2004 to September 2004 R million
Gold	27,5	-15,5	-4,3	-1 281,6
Non-gold minerals				
Iron ore	3,3	12,1	0,4	121,9
Copper	1,2	34,5	0,4	129,2
Manganese ore	1,1	45,9	0,5	154,7
Chromium	1,0	41,6	0,4	118,8
PGM's	26,1	15,3	4,0	1 196,7
Nickel	2,5	23,3	0,6	173,8
Other metallic minerals	2,3	-4,2	-0,1	-28,7
Coal	23,2	-1,4	-0,3	-98,2
Building materials	3,3	8,6	0,3	83,2
Other non-metallic minerals	8,5	33,8	2,9	867,8
Total non-gold minerals	72,5	12,5	9,1	2 719,2
Total minerals	100,0	4,8	4,8	1 437,6

1/ The contribution to the percentage change in sales is calculated by multiplying the quarterly percentage change of each mineral with the percentage contribution to total mineral sales during July 2003 to September 2003, divided by 100.

Explanatory notes

Introduction	<p>1 Statistics South Africa (Stats SA) publishes monthly information regarding the mining industry on the basis of mining production figures and mineral sales furnished by the Minerals Bureau, Department of Minerals and Energy. This statistical release contains detailed information regarding indices of the physical volume of mining production and the total value of mineral sales according to mining divisions and mineral groups on a monthly basis.</p> <p>2 In accordance with international practice, the indices have to be re-based every five years to a new base year. The base year of the index of the physical volume of mining production is currently 2000=100. Both actual and seasonally adjusted figures are presented.</p> <p>3 Due to mining production figures being available earlier than mineral sales figures, mining production indices are published one month earlier than mineral sales.</p> <p>4 The value of mineral sales is calculated, in general, on a free-on-rail/free-on-board basis.</p> <p>5 In order to improve timeliness, some information for the current month may have been estimated due to late response. These estimates will be revised in future statistical release(s) as soon as more up-to-date information is available.</p>
Scope of the survey	<p>6 This survey covers mining establishments conducting activities regarding -</p> <ul style="list-style-type: none"> • the extracting, dressing and beneficiating of minerals occurring naturally, for example solids such as coal and ores.
Classification	<p>7 The 1993 edition of the <i>Standard Industrial Classification of all Economic Activities (SIC)</i>, Fifth Edition, Report No. 09-90-02, was used to classify the statistical units in the survey. The SIC is based on the 1990 <i>International Standard Industrial Classification of all Economic Activities (ISIC)</i> with suitable adaptations for local conditions. Statistics in this publication are presented at SIC division, major group and subgroup level. Each statistical unit is classified to an industry which reflects the predominant activity of the establishment.</p>
Statistical unit	<p>8 The basic statistical unit for the collection of information is the mining establishment. An establishment is the smallest economic unit that functions as a separate entity. Each statistical unit is classified to an industry (see paragraph 7).</p>
Weighting	<p>9 The weights which are used to aggregate minerals to mineral groups and mineral groups to total mining, are based on the value of production derived from detailed information for 2000 supplied by the Minerals Bureau, Department of Minerals and Energy.</p>
Seasonal adjustment	<p>10 Seasonally adjusted estimates of all items are generated each month, using the X-11 Seasonal Adjustment Program developed by US Bureau of the Census Economic Research and Analyses Division, 1968. Seasonal adjustment is a means of removing the estimated effects of normal seasonal variation from the series so that the effects of other influences on the series can be more clearly recognised. Seasonal adjustment does not aim to remove irregular or non-seasonal influences which may be present in any particular month.</p> <p>Influences that are volatile or unsystematic can still make it difficult to interpret the movement of the series even after adjustment for seasonal variations. This means the month-to-month movements of seasonally adjusted estimates may not be reliable indicators of trend behaviour.</p>
Reliability of estimates	<p>11 Estimates are subject to sampling and non-sampling errors. Figures for the latest month</p>

are preliminary.

- Historical data** **12** More comprehensive detail on the method of calculation and historical data in respect of the production indices according to mining mineral groups for the period February 1990 to November 2002 is available in statistical release P2041.1, entitled *Mining statistics: Indices of the physical volume of mining production, Base: 2000=100, February 1990 to November 2002*, published on 11 February 2003 on the Stats SA website www.statssa.gov.za
- Related publications** **13** Users may also wish to refer to the following publications which are available from Stats SA -
- *Bulletin of Statistics.*
 - *SA Statistics.*
- Unpublished statistics** **14** In some cases Stats SA can also make available statistics not included in standard publications. The statistics can be made available via: computer printouts or diskette or CD. Generally a charge is made for providing unpublished statistics.
- Rounding-off of figures** **15** The figures in the tables have, where necessary, been rounded off to the nearest digit shown. There may, therefore, be slight discrepancies between the sums of the constituent items and the totals shown.

Glossary

Free-on-rail	Free-on-rail relates to goods sold on the local market where no railage or road transport costs are involved.
Free-on-board basis	Free-on-board relates to goods destined for the export market. Railage, road transport and docking charges are involved but no charges are made for the transport by sea.
Index of physical volume of mining production	The index of physical volume of mining production or a production index is a statistical measure of the change in the volume of production. The production index of a mineral group is the ratio between the volume of production of a mineral group in a given period and the volume of production of the same mineral group in the base period. The current base period is 2000. The production in the base period is set at 100.
Industry	An industry consists of a group of establishments engaged in the same or similar kinds of economic activity. Industries are defined in the <i>System of National Accounts (SNA)</i> in the same way as in the <i>Standard Industrial Classification (SIC) of all Economic Activities</i> , Fifth Edition of January 1993.
PGM' s - Platinum Group Metals	Platinum Group Metals includes platinum; iridium; osmiridium; palladium; rhodium; ruthenium and osmium.
Sales	Sales are the total value of sales and transfers-out of goods mined by the mining establishments and the amounts received for installation, erection or assembly or other services rendered.
Weight	The weight of a mineral group is the ratio of the sales of a mineral group to the total sales of the mining industry. The weight of a mineral group reflects the importance of the mineral group in the total mining industry. The weights change over time due to quality changes and changes in relative prices. New weights need to be calculated from time to time.

General information

Stats SA publishes approximately 300 different statistical releases each year. It is not economically viable to produce them in more than one of South Africa's eleven official languages. Since the releases are used extensively, not only locally but also by international economic and social-scientific communities, Stats SA releases are published in English only.

Stats SA has copyright on this publication. Users may apply the information as they wish, provided that they acknowledge Stats SA as the source of the basic data wherever they process, apply, utilise, publish or distribute the data; and also that they specify that the relevant application and analysis (where applicable) result from their own processing of the data.

Advanced release calendar

An advanced release calendar is disseminated on www.statssa.gov.za

Stats SA products

A complete set of Stats SA publications is available in the Stats SA Library, and in the following public libraries:

National Library of South Africa, Pretoria Division
National Library of South Africa, Cape Town Division
Natal Society Library, Pietermaritzburg
Library of Parliament, Cape Town
Bloemfontein Public Library
Johannesburg Public Library
Eastern Cape Library Services, King William's Town
Central Regional Library, Polokwane
Central Reference Library, Nelspruit
Central Reference Collection, Kimberley
Central Reference Library, Mmabatho

Stats SA also provides a subscription service.

Electronic services

A large range of data are available via on-line services, diskette, CD and computer printouts. For more details about our electronic data services, contact (012) 310 8600/8390/8351/4892/8496/8095.

You can visit us on the Internet at: www.statssa.gov.za

Enquiries

Telephone number (012) 317 8494 (Emile Roux)
(012) 310 8600/ 8390/ 8351/ 4892/ 8496/ 8095 (user information services)
(012) 310 8220/ 8228 (technical enquiries)
(012) 310 8161 (orders)
(012) 310 8490 (library)

Fax number: (012) 310 8664 (technical enquiries)

email: emile.roux@dme.gov.za (technical enquiries)
mpelim@statssa.gov.za (technical enquiries)
info@statssa.gov.za (user information services)
distribution@statssa.gov.za (orders)

Postal address: Private Bag X44, Pretoria, 0001