

Statistical release

P2041

Mining: Production and sales (Preliminary)

November 2011

**Embargoed until:
17 January 2012
11:30**

Enquiries:

User Information Services
Tel: (012) 310 8600

Forthcoming issue:

December 2011

Expected release date:

9 February 2012

Contents

| | |
|--|-----------|
| Results for November 2011 | 2 |
| Tables..... | 6 |
| Table 1 – Total index of the physical volume of mining production: 2005 – 2011..... | 6 |
| Table 2 – Annual percentage change in the index of the physical volume of mining production: 2005 – 2011 | 6 |
| Table 3 – Total seasonally adjusted index of the physical volume of total mining production: 2005 – 2011 | 6 |
| Table 4 – Indices of the physical volume of mining production according to mineral groups and minerals..... | 7 |
| Table 5 – Seasonally adjusted indices of the physical volume of mining production according to mineral groups and minerals | 7 |
| Table 6 – Annual percentage change in the three-monthly physical volume of mining production according to mineral groups and minerals..... | 8 |
| Table 7 – Annual percentage change in the cumulative physical volume of mining production according to mineral groups and minerals | 8 |
| Table 8 – Total value of mineral sales (R million): 2005 – 2011 | 9 |
| Table 9 – Annual percentage change in the total value of mineral sales: 2005 – 2011 | 9 |
| Table 10 – Seasonally adjusted total value of mineral sales (R million): 2005 – 2011 | 9 |
| Table 11 – Estimated actual value of mineral sales according to mineral groups and minerals..... | 10 |
| Table 12 – Seasonally adjusted value of mineral sales according to mineral groups and minerals | 10 |
| Table 13 – Annual percentage change in the three-monthly value of mineral sales according to mineral groups and minerals | 11 |
| Table 14 – Annual percentage change in the cumulative value of mineral sales according to mineral groups and minerals | 11 |
| Explanatory notes..... | 12 |
| Glossary..... | 14 |
| General information..... | 15 |

Results for November 2011

Table A – Total mining production

| Actual estimate | Base: 2005=100 | | | |
|--|----------------|--|--|--|
| | November 2011 | % change between November 2010 and November 2011 | % change between September to November 2010 and September to November 2011 | % change between January to November 2010 and January to November 2011 |
| Physical volume of mining production index | 95,3 | -4,6 | -6,7 | -0,1 |

| Seasonally adjusted estimate | Base: 2005=100 | | |
|--|----------------|--|---|
| | November 2011 | % change between October and November 2011 | % change between June to August 2011 and September to November 2011 |
| Physical volume of mining production index | 91,3 | 11,2 | -2,0 |

Table B – Contribution of the mineral groups and minerals to the total three-monthly seasonally adjusted growth in mining production

| Mineral groups and minerals | Base: 2005=100 | | | | | |
|-----------------------------|----------------|---------------------|----------------------------|---|---|---|
| | Weights 2005 | June to August 2011 | September to November 2011 | % change between June to August 2011 and September to November 2011 | Difference between June to August 2011 and September to November 2011 | Contribution (% points) to the % change in total mining production 1/ |
| Gold | 17,2 | 59,4 | 61,1 | 2,9 | 1,7 | 0,3 |
| Iron ore | 5,3 | 147,9 | 162,3 | 9,7 | 14,4 | 0,9 |
| Chromium ore | 1,3 | 144,5 | 136,7 | -5,4 | -7,8 | -0,1 |
| Copper | 1,8 | 84,6 | 77,2 | -8,7 | -7,4 | -0,1 |
| Manganese ore | 1,5 | 182,4 | 183,3 | 0,5 | 0,9 | 0,0 |
| PGMs | 27,0 | 91,8 | 82,7 | -9,9 | -9,1 | -2,7 |
| Nickel | 2,8 | 101,0 | 93,7 | -7,2 | -7,3 | -0,2 |
| Other metallic minerals | 2,8 | 107,5 | 102,9 | -4,3 | -4,6 | -0,1 |
| Diamonds | 7,6 | 45,9 | 42,7 | -7,0 | -3,2 | -0,3 |
| Coal | 24,9 | 100,5 | 103,5 | 3,0 | 3,0 | 0,8 |
| Building materials | 2,1 | 95,5 | 100,0 | 4,7 | 4,5 | 0,1 |
| Other non-metallic minerals | 5,7 | 70,4 | 63,1 | -10,4 | -7,3 | -0,5 |
| Total | 100,0 | 89,4 | 87,6 | -2,0 | -1,8 | -2,0 |

1/ The contribution (percentage points) of a mineral or mineral group to the percentage change in the total seasonally adjusted mining production is calculated by multiplying the difference in the index for the mineral or mineral group by the weight of the mineral or mineral group and then dividing by the previous period's total index. Figures have been rounded off.

Key findings regarding mining production for November 2011

Seasonally adjusted mining production decreased by 2,0% for the three months ended November 2011 compared with the three months ended August 2011. The main contributor to the 2,0% decrease was PGMs (contributing -2,7 percentage points) (see Table B).

Actual mining production was 6,7% lower for the three months ended November 2011 compared with the three months ended November 2010 (see Tables A and 6). A year-on-year decrease of 4,6% was recorded in November 2011 compared with a revised 12,0% decrease in October 2011 (see Table 2).

Figure 1 – Monthly indices of physical volume of total mining production (base: 2005=100)

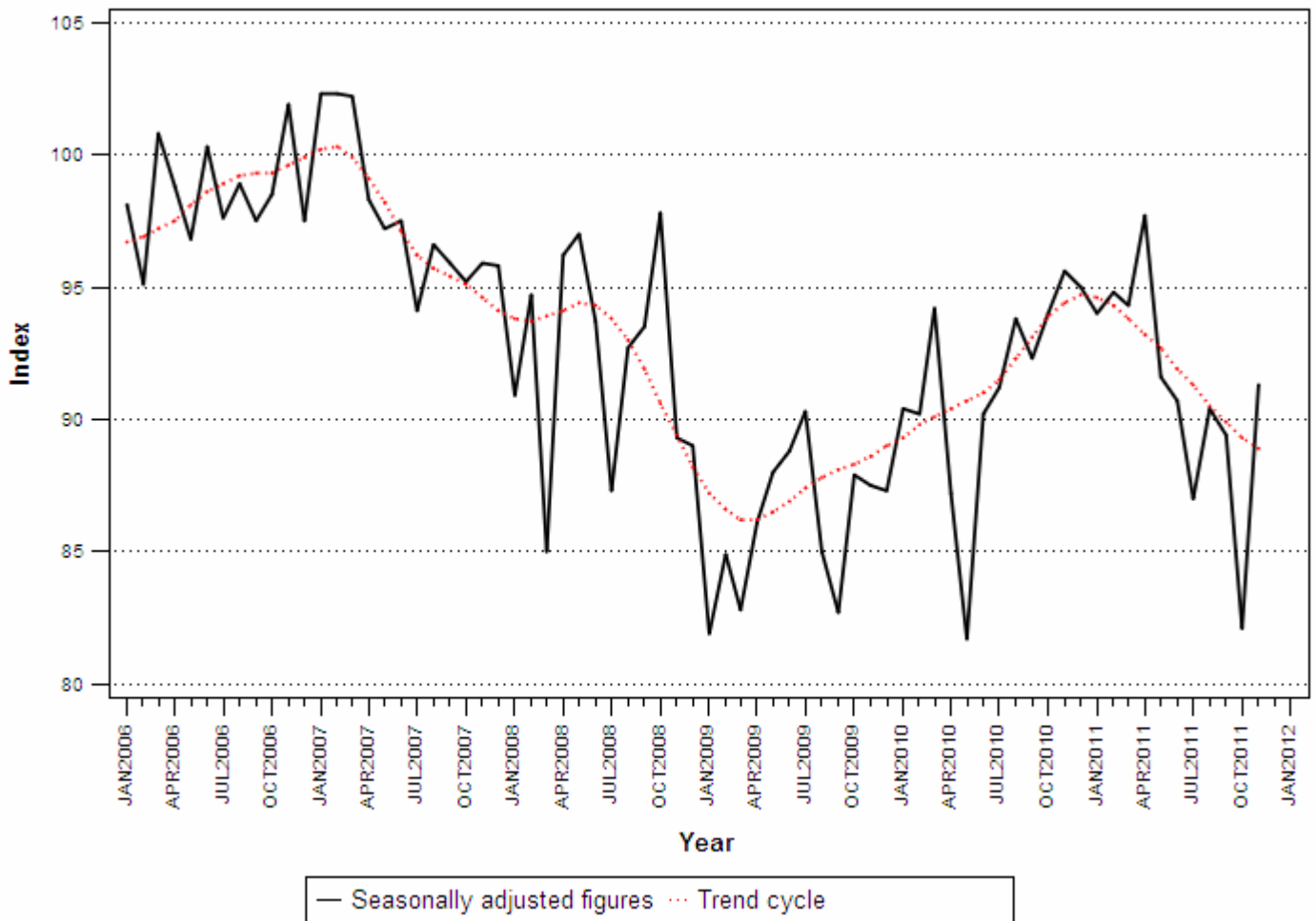


Table C – Total value of mineral sales

| Actual estimate | October 2011 | % change between October 2010 and October 2011 | % change between August to October 2010 and August to October 2011 | % change between January to October 2010 and January to October 2011 |
|------------------------------|--------------|--|--|--|
| | R million | | | |
| Total value of mineral sales | 33 319,1 | 22,1 | 22,1 | 22,3 |

| Seasonally adjusted estimate | October 2011 | % change between September and October 2011 | % change between May to July 2011 and August to October 2011 |
|------------------------------|--------------|---|--|
| | R million | | |
| Total value of mineral sales | 32 820,7 | -3,4 | 10,8 |

Table D – Contribution of the mineral groups and minerals to the seasonally adjusted three-monthly growth in the total value of mineral sales (R million)

| Mineral groups and minerals | % contribution to total mineral sales during May to July 2011 | May to July 2011 | August to October 2011 | % change between May to July 2011 and August to October 2011 | Contribution to the % change in the total value of mineral sales 1/ | Difference between May to July 2011 and August to October 2011 |
|-----------------------------|---|------------------|------------------------|--|---|--|
| | | R million | R million | | | |
| Gold | 17,5 | 15 365,7 | 19 539,7 | 27,2 | 4,8 | 4 174,0 |
| Iron ore | 19,0 | 16 700,6 | 16 509,3 | -1,1 | -0,2 | -191,3 |
| Chromium ore | 2,4 | 2 128,1 | 1 997,7 | -6,1 | -0,1 | -130,4 |
| Copper | 1,5 | 1 320,4 | 1 377,3 | 4,3 | 0,1 | 56,9 |
| Manganese ore | 2,4 | 2 095,6 | 2 767,7 | 32,1 | 0,8 | 672,1 |
| PGMs | 22,7 | 19 902,5 | 20 259,2 | 1,8 | 0,4 | 356,7 |
| Nickel | 1,4 | 1 215,2 | 1 418,4 | 16,7 | 0,2 | 203,2 |
| Other metallic minerals | 4,0 | 3 494,9 | 2 923,0 | -16,4 | -0,7 | -571,9 |
| Coal | 22,5 | 19 751,5 | 23 378,0 | 18,4 | 4,1 | 3 626,5 |
| Building materials | 2,1 | 1 847,6 | 2 002,9 | 8,4 | 0,2 | 155,3 |
| Other non-metallic minerals | 4,4 | 3 874,6 | 5 016,1 | 29,5 | 1,3 | 1 141,5 |
| Total | 100,0 | 87 696,7 | 97 189,3 | 10,8 | 10,8 | 9 492,6 |

1/ The contribution (percentage points) to the percentage change in sales is calculated by multiplying the percentage change of each mineral with the percentage contribution to total mineral sales during May to July 2011, divided by 100. Figures have been rounded off.

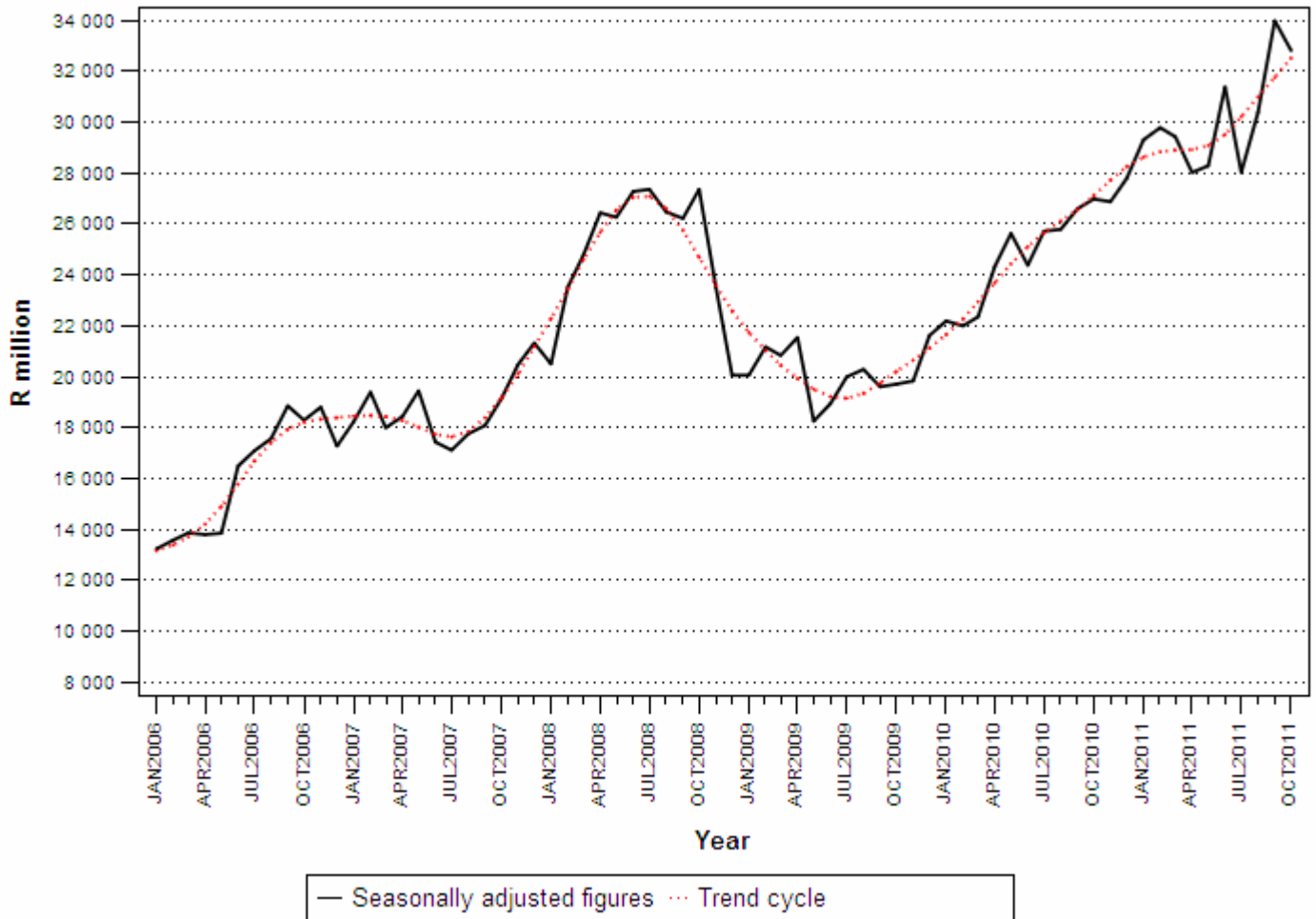
Key findings regarding mineral sales for October 2011

The seasonally adjusted value of mineral sales at current prices reflected an increase of 10,8% for the three months ended October 2011 compared with the three months ended July 2011. The 10,8% increase (R9 492,6 million) was mainly due to increases in the sales value of gold (contributing 4,8 percentage points or R4 174,0 million) and coal (contributing 4,1 percentage points or R3 626,5 million) (see Table D).

The actual value of mineral sales at current prices for the three months ended October 2011 increased by 22,1% compared with the same three months of 2010. The major contributors to this increase were:

- coal (contributing 7,3 percentage points or R5 950,6 million);
- gold (contributing 6,7 percentage points or R5 463,0 million);
- iron ore (contributing 4,9 percentage points or R3 941,0 million); and
- other metallic minerals (contributing 1,3 percentage points or R1 056,9 million) (see Table 13).

Figure 2 – Total value of mineral sales



PJ Lehohla
Statistician-General

Tables

Table 1 – Total index of the physical volume of mining production: 2005 – 2011

| Month | Base: 2005=100 | | | | | | |
|-------------|----------------|-------------|-------------|-------------|-------------|-------------|---------|
| | 2005 | 2006 | 2007 | 2008 | 2009 | 2010 1/ | 2011 1/ |
| January | 97,1 | 87,7 | 90,1 | 79,0 | 71,4 | 78,3 | 81,0 |
| February | 90,4 | 85,2 | 90,8 | 83,6 | 74,6 | 79,9 | 83,2 |
| March | 104,8 | 101,7 | 102,9 | 85,6 | 83,7 | 94,8 | 94,9 |
| April | 99,2 | 94,8 | 93,9 | 91,4 | 81,3 | 82,5 | 92,5 |
| May | 102,7 | 98,7 | 99,0 | 98,1 | 88,6 | 81,9 | 91,4 |
| June | 104,0 | 104,9 | 102,6 | 98,4 | 93,0 | 94,1 | 94,6 |
| July | 101,4 | 99,4 | 96,0 | 89,4 | 92,4 | 93,4 | 89,2 |
| August | 102,8 | 103,7 | 101,6 | 97,5 | 89,5 | 99,1 | 95,6 |
| September | 103,1 | 105,1 | 104,5 | 102,3 | 90,2 | 101,6 | 98,0 |
| October | 98,5 | 100,2 | 97,0 | 99,0 | 89,2 | 95,1 | 83,7 |
| November | 100,4 | 104,2 | 98,6 | 92,4 | 91,0 | 99,9 | 95,3 |
| December | 95,7 | 98,9 | 96,8 | 90,7 | 89,0 | 96,9 | |
| Year | 100,0 | 98,7 | 97,8 | 92,3 | 86,2 | 91,5 | |

1/ Preliminary.

Table 2 – Annual percentage change in the index of the physical volume of mining production: 2005 – 2011

| Month | Percentage change 2/ | | | | | | |
|-------------|----------------------|-------------|-------------|-------------|-------------|------------|-------|
| | 2005 | 2006 | 2007 | 2008 | 2009 | 2010 | 2011 |
| January | 7,7 | -9,7 | 2,7 | -12,4 | -9,6 | 9,7 | 3,4 |
| February | 3,2 | -5,7 | 6,5 | -7,9 | -10,8 | 7,1 | 4,1 |
| March | 3,6 | -3,0 | 1,2 | -16,8 | -2,2 | 13,3 | 0,1 |
| April | 5,5 | -4,4 | -1,0 | -2,6 | -11,0 | 1,5 | 12,1 |
| May | 1,4 | -3,9 | 0,3 | -0,9 | -9,7 | -7,6 | 11,6 |
| June | 4,6 | 0,9 | -2,2 | -4,1 | -5,5 | 1,2 | 0,5 |
| July | -5,2 | -2,0 | -3,4 | -6,8 | 3,3 | 1,1 | -4,5 |
| August | 0,4 | 0,9 | -2,0 | -4,0 | -8,2 | 10,7 | -3,5 |
| September | -1,9 | 2,0 | -0,6 | -2,1 | -11,8 | 12,6 | -3,5 |
| October | 1,7 | 1,7 | -3,2 | 2,1 | -9,9 | 6,6 | -12,0 |
| November | 1,9 | 3,7 | -5,3 | -6,3 | -1,5 | 9,8 | -4,6 |
| December | -5,8 | 3,4 | -2,1 | -6,3 | -1,9 | 8,9 | |
| Year | 1,3 | -1,3 | -0,9 | -5,6 | -6,6 | 6,2 | |

2/ The annual percentage change is the change in the index of the physical volume of mining production of the relevant month of the current year compared with the corresponding month of the previous year expressed as a percentage.

Table 3 – Total seasonally adjusted index of the physical volume of total mining production: 2005 – 2011

| Month | Base: 2005=100 | | | | | | |
|-----------|----------------|-------|-------|------|------|------|------|
| | 2005 | 2006 | 2007 | 2008 | 2009 | 2010 | 2011 |
| January | 107,0 | 98,1 | 102,3 | 90,9 | 81,9 | 90,4 | 94,0 |
| February | 100,2 | 95,1 | 102,3 | 94,7 | 84,9 | 90,2 | 94,8 |
| March | 104,5 | 100,8 | 102,2 | 85,0 | 82,8 | 94,2 | 94,3 |
| April | 102,9 | 98,8 | 98,3 | 96,2 | 86,1 | 87,2 | 97,7 |
| May | 100,7 | 96,8 | 97,2 | 97,0 | 88,0 | 81,7 | 91,6 |
| June | 100,0 | 100,3 | 97,5 | 93,7 | 88,8 | 90,2 | 90,7 |
| July | 99,7 | 97,6 | 94,1 | 87,3 | 90,3 | 91,2 | 87,0 |
| August | 98,3 | 98,9 | 96,6 | 92,7 | 85,0 | 93,8 | 90,4 |
| September | 96,7 | 97,5 | 95,9 | 93,5 | 82,7 | 92,3 | 89,4 |
| October | 96,6 | 98,5 | 95,2 | 97,8 | 87,9 | 94,0 | 82,1 |
| November | 98,5 | 101,9 | 95,9 | 89,3 | 87,5 | 95,6 | 91,3 |
| December | 95,0 | 97,5 | 95,8 | 89,0 | 87,3 | 95,0 | |

Table 4 – Indices of the physical volume of mining production according to mineral groups and minerals

| Mineral groups and minerals | Base: 2005=100 | | | | | % change between November 2010 and November 2011 |
|-----------------------------|----------------|---------------------|------------------|-----------------|------------------|--|
| | Weights 2005 | Average for 2010 1/ | November 2010 1/ | October 2011 1/ | November 2011 1/ | |
| Gold | 17,2 | 64,0 | 67,3 | 63,6 | 64,3 | -4,5 |
| Iron ore | 5,3 | 148,5 | 142,1 | 166,8 | 165,4 | 16,4 |
| Chromium ore | 1,3 | 144,7 | 162,1 | 145,2 | 150,7 | -7,0 |
| Copper | 1,8 | 80,5 | 99,2 | 72,6 | 95,1 | -4,1 |
| Manganese ore | 1,5 | 155,5 | 188,7 | 194,1 | 186,0 | -1,4 |
| PGMs | 27,0 | 94,5 | 113,2 | 66,7 | 96,1 | -15,1 |
| Nickel | 2,8 | 94,3 | 94,1 | 59,9 | 110,4 | 17,3 |
| Other metallic minerals | 2,8 | 94,0 | 91,6 | 109,3 | 102,7 | 12,1 |
| Diamonds | 7,6 | 56,2 | 49,0 | 54,7 | 42,2 | -13,9 |
| Coal | 24,9 | 103,8 | 114,2 | 103,1 | 111,4 | -2,5 |
| Building materials | 2,1 | 96,2 | 100,0 | 110,9 | 108,3 | 8,3 |
| Other non-metallic minerals | 5,7 | 70,3 | 70,8 | 49,3 | 68,2 | -3,7 |
| Total | 100,0 | 91,5 | 99,9 | 83,7 | 95,3 | -4,6 |

1/ Preliminary.

Table 5 – Seasonally adjusted indices of the physical volume of mining production according to mineral groups and minerals

| Mineral groups and minerals | Base: 2005=100 | | | | % change between October and November 2011 |
|-----------------------------|----------------|---------------|--------------|---------------|--|
| | Weights 2005 | November 2010 | October 2011 | November 2011 | |
| Gold | 17,2 | 65,4 | 61,7 | 62,3 | 1,0 |
| Iron ore | 5,3 | 145,5 | 159,7 | 168,3 | 5,4 |
| Chromium ore | 1,3 | 152,9 | 132,8 | 141,6 | 6,6 |
| Copper | 1,8 | 88,2 | 76,6 | 83,8 | 9,4 |
| Manganese ore | 1,5 | 174,5 | 188,9 | 171,1 | -9,4 |
| PGMs | 27,0 | 104,1 | 71,4 | 88,1 | 23,4 |
| Nickel | 2,8 | 95,1 | 62,7 | 112,8 | 79,9 |
| Other metallic minerals | 2,8 | 92,7 | 103,4 | 104,3 | 0,9 |
| Diamonds | 7,6 | 47,6 | 47,0 | 41,1 | -12,6 |
| Coal | 24,9 | 109,6 | 99,1 | 107,0 | 8,0 |
| Building materials | 2,1 | 93,2 | 99,7 | 101,3 | 1,6 |
| Other non-metallic minerals | 5,7 | 73,4 | 48,9 | 71,2 | 45,6 |
| Total | 100,0 | 95,6 | 82,1 | 91,3 | 11,2 |

Table 6 – Annual percentage change in the three-monthly physical volume of mining production according to mineral groups and minerals

| Mineral groups and minerals | Base: 2005=100 | | | | | |
|-----------------------------|----------------|----------------------------|----------------------------|--|--|---|
| | Weights 2005 | September to November 2010 | September to November 2011 | % change between September to November 2010 and September to November 2011 | Difference between September to November 2010 and September to November 2011 | Contribution (% points) to the % change in total mining production 1/ |
| Gold | 17,2 | 66,9 | 64,3 | -3,9 | -2,6 | -0,5 |
| Iron ore | 5,3 | 143,5 | 163,5 | 13,9 | 20,0 | 1,1 |
| Chromium ore | 1,3 | 163,2 | 149,3 | -8,5 | -13,9 | -0,2 |
| Copper | 1,8 | 92,9 | 77,7 | -16,4 | -15,2 | -0,3 |
| Manganese ore | 1,5 | 178,3 | 193,8 | 8,7 | 15,5 | 0,2 |
| PGMs | 27,0 | 107,5 | 89,2 | -17,0 | -18,3 | -5,0 |
| Nickel | 2,8 | 92,8 | 90,5 | -2,5 | -2,3 | -0,1 |
| Other metallic minerals | 2,8 | 97,0 | 104,2 | 7,4 | 7,2 | 0,2 |
| Diamonds | 7,6 | 58,4 | 49,7 | -14,9 | -8,7 | -0,7 |
| Coal | 24,9 | 112,9 | 108,7 | -3,7 | -4,2 | -1,1 |
| Building materials | 2,1 | 102,5 | 110,1 | 7,4 | 7,6 | 0,2 |
| Other non-metallic minerals | 5,7 | 74,3 | 63,7 | -14,3 | -10,6 | -0,6 |
| Total | 100,0 | 98,9 | 92,3 | -6,7 | -6,6 | -6,7 |

1/ The contribution (percentage points) of a mineral or mineral group to the percentage change in the total mining production is calculated by multiplying the difference in the index for the mineral or mineral group by the weight of the mineral or mineral group and then dividing by the previous period's total index. Figures have been rounded off.

Table 7 – Annual percentage change in the cumulative physical volume of mining production according to mineral groups and minerals

| Mineral groups and minerals | Base: 2005=100 | | | | | |
|-----------------------------|----------------|--------------------------|--------------------------|--|--|---|
| | Weights 2005 | January to November 2010 | January to November 2011 | % change between January to November 2010 and January to November 2011 | Difference between January to November 2010 and January to November 2011 | Contribution (% points) to the % change in total mining production 2/ |
| Gold | 17,2 | 63,8 | 61,4 | -3,8 | -2,4 | -0,5 |
| Iron ore | 5,3 | 147,9 | 146,6 | -0,9 | -1,3 | -0,1 |
| Chromium ore | 1,3 | 145,7 | 143,2 | -1,7 | -2,5 | 0,0 |
| Copper | 1,8 | 79,8 | 84,8 | 6,3 | 5,0 | 0,1 |
| Manganese ore | 1,5 | 154,0 | 187,0 | 21,4 | 33,0 | 0,5 |
| PGMs | 27,0 | 91,8 | 92,5 | 0,8 | 0,7 | 0,2 |
| Nickel | 2,8 | 93,7 | 100,0 | 6,7 | 6,3 | 0,2 |
| Other metallic minerals | 2,8 | 94,3 | 103,6 | 9,9 | 9,3 | 0,3 |
| Diamonds | 7,6 | 56,3 | 46,6 | -17,2 | -9,7 | -0,8 |
| Coal | 24,9 | 104,6 | 104,8 | 0,2 | 0,2 | 0,1 |
| Building materials | 2,1 | 99,2 | 97,5 | -1,7 | -1,7 | 0,0 |
| Other non-metallic minerals | 5,7 | 70,6 | 68,6 | -2,8 | -2,0 | -0,1 |
| Total | 100,0 | 91,0 | 90,9 | -0,1 | -0,1 | -0,1 |

2/ The contribution (percentage points) of a mineral or mineral group to the percentage change in the total mining production is calculated by multiplying the difference in the index for the mineral or mineral group by the weight of the mineral or mineral group and then dividing by the previous period's total index. Figures have been rounded off.

Table 8 – Total value of mineral sales (R million): 2005 – 2011

| Month | 2005 | 2006 | 2007 | 2008 | 2009 | 2010 1/ | 2011 1/ |
|-------------|------------------|------------------|------------------|------------------|------------------|------------------|----------|
| January | 9 587,4 | 11 755,1 | 15 692,9 | 17 442,2 | 17 263,9 | 19 144,4 | 25 537,9 |
| February | 9 383,8 | 12 680,8 | 17 928,6 | 21 737,4 | 19 906,3 | 20 335,7 | 27 449,1 |
| March | 11 477,1 | 14 179,9 | 18 555,2 | 25 894,1 | 22 093,9 | 23 621,3 | 31 379,7 |
| April | 11 034,0 | 13 042,6 | 17 447,8 | 25 520,6 | 20 733,6 | 23 815,3 | 27 435,5 |
| May | 12 239,8 | 14 046,8 | 19 841,6 | 26 737,6 | 18 463,5 | 25 785,7 | 27 954,5 |
| June | 13 360,1 | 17 809,8 | 19 033,2 | 29 881,0 | 20 337,3 | 26 222,4 | 33 902,7 |
| July | 12 001,8 | 17 614,8 | 17 449,4 | 27 164,7 | 20 019,7 | 25 626,5 | 27 894,1 |
| August | 11 687,6 | 17 339,2 | 17 890,4 | 27 064,3 | 20 144,0 | 25 855,9 | 30 205,9 |
| September | 13 524,1 | 20 586,6 | 19 619,7 | 27 830,7 | 20 737,7 | 27 977,6 | 35 494,5 |
| October | 12 074,8 | 18 031,0 | 18 713,7 | 27 191,4 | 19 909,8 | 27 291,0 | 33 319,1 |
| November | 12 453,2 | 18 918,2 | 20 674,4 | 23 991,0 | 20 128,7 | 27 218,9 | |
| December | 13 994,2 | 17 584,7 | 21 590,8 | 20 259,5 | 21 626,2 | 27 790,3 | |
| Year | 142 817,9 | 193 589,5 | 224 437,7 | 300 714,5 | 241 364,6 | 300 685,0 | |

1/ Preliminary.

Table 9 – Annual percentage change in the total value of mineral sales: 2005 – 2011

| Month | Percentage change 2/ | | | | | | |
|-------------|----------------------|-------------|-------------|-------------|--------------|-------------|------|
| | 2005 | 2006 | 2007 | 2008 | 2009 | 2010 | 2011 |
| January | -2,4 | 22,6 | 33,5 | 11,1 | -1,0 | 10,9 | 33,4 |
| February | -2,0 | 35,1 | 41,4 | 21,2 | -8,4 | 2,2 | 35,0 |
| March | 10,4 | 23,5 | 30,9 | 39,6 | -14,7 | 6,9 | 32,8 |
| April | 12,7 | 18,2 | 33,8 | 46,3 | -18,8 | 14,9 | 15,2 |
| May | 18,0 | 14,8 | 41,3 | 34,8 | -30,9 | 39,7 | 8,4 |
| June | 23,1 | 33,3 | 6,9 | 57,0 | -31,9 | 28,9 | 29,3 |
| July | 10,7 | 46,8 | -0,9 | 55,7 | -26,3 | 28,0 | 8,8 |
| August | 18,8 | 48,4 | 3,2 | 51,3 | -25,6 | 28,4 | 16,8 |
| September | 15,7 | 52,2 | -4,7 | 41,9 | -25,5 | 34,9 | 26,9 |
| October | 15,4 | 49,3 | 3,8 | 45,3 | -26,8 | 37,1 | 22,1 |
| November | 15,1 | 51,9 | 9,3 | 16,0 | -16,1 | 35,2 | |
| December | 32,2 | 25,7 | 22,8 | -6,2 | 6,7 | 28,5 | |
| Year | 14,2 | 35,5 | 15,9 | 34,0 | -19,7 | 24,6 | |

2/ The annual percentage change is the change in the value of mineral sales of the relevant month of the current year compared with the corresponding month of the previous year expressed as a percentage.

Table 10 – Seasonally adjusted total value of mineral sales (R million): 2005 – 2011

| Month | 2005 | 2006 | 2007 | 2008 | 2009 | 2010 | 2011 |
|-----------|----------|----------|----------|----------|----------|----------|----------|
| January | 10 553,6 | 13 230,6 | 18 235,1 | 20 498,8 | 20 056,5 | 22 188,1 | 29 304,1 |
| February | 9 883,3 | 13 576,0 | 19 390,2 | 23 517,8 | 21 168,9 | 21 993,4 | 29 782,9 |
| March | 11 327,7 | 13 857,9 | 17 991,5 | 24 784,3 | 20 833,3 | 22 349,1 | 29 425,3 |
| April | 11 650,9 | 13 794,8 | 18 432,3 | 26 435,6 | 21 539,6 | 24 328,7 | 28 021,8 |
| May | 12 073,2 | 13 847,5 | 19 444,0 | 26 263,2 | 18 252,0 | 25 629,2 | 28 286,0 |
| June | 12 579,9 | 16 488,5 | 17 432,3 | 27 275,1 | 18 938,9 | 24 376,2 | 31 388,1 |
| July | 11 836,6 | 17 084,1 | 17 111,2 | 27 360,8 | 19 988,7 | 25 713,8 | 28 022,6 |
| August | 11 854,5 | 17 566,8 | 17 754,0 | 26 471,2 | 20 286,7 | 25 787,7 | 30 384,1 |
| September | 12 384,2 | 18 852,7 | 18 085,1 | 26 218,3 | 19 603,5 | 26 597,6 | 33 984,5 |
| October | 12 001,9 | 18 286,4 | 19 130,1 | 27 357,1 | 19 706,7 | 26 980,6 | 32 820,7 |
| November | 12 261,6 | 18 802,0 | 20 478,2 | 23 522,1 | 19 831,5 | 26 873,5 | |
| December | 13 700,9 | 17 272,0 | 21 323,4 | 20 055,0 | 21 611,5 | 27 786,3 | |

Table 11 – Estimated actual value of mineral sales according to mineral groups and minerals

| Mineral groups and minerals | Value of sales for 2010 1/ | Value of sales for October 2010 1/ | Value of sales for September 2011 1/ | Value of sales for October 2011 1/ | % change between October 2010 and October 2011 |
|------------------------------------|----------------------------|------------------------------------|--------------------------------------|------------------------------------|--|
| | R million | R million | R million | R million | |
| Gold | 53 093,2 | 4 654,0 | 7 782,7 | 6 894,4 | 48,1 |
| Iron ore | 43 418,6 | 4 673,0 | 6 205,4 | 5 518,7 | 18,1 |
| Chromium ore | 6 596,2 | 606,0 | 728,0 | 797,5 | 31,6 |
| Copper | 4 369,0 | 408,8 | 459,6 | 519,6 | 27,1 |
| Manganese ore | 10 660,5 | 1 147,5 | 1 016,0 | 975,3 | -15,0 |
| PGMs | 73 786,9 | 5 355,8 | 7 957,7 | 5 981,4 | 11,7 |
| Nickel | 5 984,9 | 533,9 | 367,1 | 549,6 | 2,9 |
| Other metallic minerals | 7 534,2 | 602,6 | 1 151,6 | 1 186,1 | 96,8 |
| Coal | 71 802,4 | 6 665,7 | 7 479,4 | 8 627,8 | 29,4 |
| Building materials | 6 877,8 | 617,1 | 726,3 | 699,8 | 13,4 |
| Other non-metallic minerals | 16 561,4 | 2 026,6 | 1 620,7 | 1 568,9 | -22,6 |
| Total | 300 685,0 | 27 291,0 | 35 494,5 | 33 319,1 | 22,1 |

1/ Preliminary.

Table 12 – Seasonally adjusted value of mineral sales according to mineral groups and minerals

| Mineral groups and minerals | Value of sales for October 2010 | Value of sales for September 2011 | Value of sales for October 2011 | % change between September and October 2011 |
|------------------------------------|---------------------------------|-----------------------------------|---------------------------------|---|
| | R million | R million | R million | |
| Gold | 4 374,5 | 7 470,2 | 6 485,5 | -13,2 |
| Iron ore | 4 430,2 | 6 397,6 | 5 218,7 | -18,4 |
| Chromium ore | 576,7 | 668,9 | 760,0 | 13,6 |
| Copper | 361,6 | 462,1 | 455,7 | -1,4 |
| Manganese ore | 1 082,0 | 994,2 | 886,7 | -10,8 |
| PGMs | 6 446,8 | 6 582,8 | 7 267,0 | 10,4 |
| Nickel | 571,1 | 386,2 | 588,6 | 52,4 |
| Other metallic minerals | 587,3 | 904,1 | 1 151,3 | 27,3 |
| Coal | 6 161,4 | 7 703,5 | 7 952,9 | 3,2 |
| Building materials | 562,8 | 686,1 | 637,6 | -7,1 |
| Other non-metallic minerals | 1 826,2 | 1 728,8 | 1 416,7 | -18,1 |
| Total | 26 980,6 | 33 984,5 | 32 820,7 | -3,4 |

Table 13 – Annual percentage change in the three-monthly value of mineral sales according to mineral groups and minerals

| Mineral groups and minerals | % contribution to total mineral sales during August to October 2010 | Value of sales for August to October 2010 | Value of sales for August to October 2011 | % change between August to October 2010 and August to October 2011 | Contribution to the % change in the total value of mineral sales 1/ | Difference in sales between August to October 2010 and August to October 2011 |
|-----------------------------|---|---|---|--|---|---|
| | | R million | R million | | % points | R million |
| Gold | 18,1 | 14 698,1 | 20 161,1 | 37,2 | 6,7 | 5 463,0 |
| Iron ore | 14,0 | 11 368,6 | 15 309,6 | 34,7 | 4,9 | 3 941,0 |
| Chromium ore | 2,3 | 1 838,8 | 2 142,2 | 16,5 | 0,4 | 303,4 |
| Copper | 1,5 | 1 205,8 | 1 397,8 | 15,9 | 0,2 | 192,0 |
| Manganese ore | 3,5 | 2 843,4 | 2 937,3 | 3,3 | 0,1 | 93,9 |
| PGMs | 25,5 | 20 697,1 | 20 913,6 | 1,0 | 0,3 | 216,5 |
| Nickel | 1,9 | 1 579,7 | 1 393,3 | -11,8 | -0,2 | -186,4 |
| Other metallic minerals | 2,5 | 2 042,6 | 3 099,5 | 51,7 | 1,3 | 1 056,9 |
| Coal | 22,9 | 18 571,7 | 24 522,3 | 32,0 | 7,3 | 5 950,6 |
| Building materials | 2,1 | 1 740,9 | 2 151,3 | 23,6 | 0,5 | 410,4 |
| Other non-metallic minerals | 5,6 | 4 537,6 | 4 991,6 | 10,0 | 0,6 | 454,0 |
| Total | 100,0 | 81 124,5 | 99 019,5 | 22,1 | 22,1 | 17 895,0 |

1/ The contribution (percentage points) to the percentage change in sales is calculated by multiplying the percentage change of each mineral with the percentage contribution to total mineral sales during August to October 2010, divided by 100. Figures have been rounded off.

Table 14 – Annual percentage change in the cumulative value of mineral sales according to mineral groups and minerals

| Mineral groups and minerals | % contribution to total mineral sales during January to October 2010 | Value of sales for January to October 2010 | Value of sales for January to October 2011 | % change between January to October 2010 and January to October 2011 | Contribution to the % change in the total value of mineral sales 2/ | Difference in sales between January to October 2010 and January to October 2011 |
|-----------------------------|--|--|--|--|---|---|
| | | R million | R million | | % points | R million |
| Gold | 17,7 | 43 382,5 | 53 818,7 | 24,1 | 4,3 | 10 436,2 |
| Iron ore | 14,0 | 34 416,6 | 51 692,0 | 50,2 | 7,0 | 17 275,4 |
| Chromium ore | 2,2 | 5 379,7 | 7 198,3 | 33,8 | 0,7 | 1 818,6 |
| Copper | 1,5 | 3 580,8 | 4 607,4 | 28,7 | 0,4 | 1 026,6 |
| Manganese ore | 3,5 | 8 524,9 | 8 213,9 | -3,6 | -0,1 | -311,0 |
| PGMs | 24,6 | 60 475,5 | 69 097,3 | 14,3 | 3,5 | 8 621,8 |
| Nickel | 2,1 | 5 079,4 | 5 262,9 | 3,6 | 0,1 | 183,5 |
| Other metallic minerals | 2,5 | 6 150,6 | 8 631,1 | 40,3 | 1,0 | 2 480,5 |
| Coal | 24,1 | 59 189,2 | 70 650,1 | 19,4 | 4,7 | 11 460,9 |
| Building materials | 2,4 | 5 827,2 | 6 300,9 | 8,1 | 0,2 | 473,7 |
| Other non-metallic minerals | 5,6 | 13 669,4 | 15 100,6 | 10,5 | 0,6 | 1 431,2 |
| Total | 100,0 | 245 675,8 | 300 573,0 | 22,3 | 22,3 | 54 897,2 |

2/ The contribution (percentage points) to the percentage change in sales is calculated by multiplying the percentage change of each mineral with the percentage contribution to total mineral sales during January to October 2010, divided by 100. Figures have been rounded off.

Explanatory notes

| | | |
|------------------------------|-----------|---|
| Introduction | 1 | Statistics South Africa (Stats SA) publishes monthly information regarding the mining industry on the basis of mining production figures and mineral sales furnished by the Department of Mineral Resources (DMR). This statistical release contains detailed information regarding indices of the physical volume of mining production and the total value of mineral sales according to mining mineral groups and minerals on a monthly basis. |
| | 2 | In accordance with international practice, the indices have to be re-based every five years to a new base year. The base year of the index of the physical volume of mining production is currently 2005=100. Both actual and seasonally adjusted figures are presented. |
| | 3 | Due to mining production figures being available earlier than mineral sales figures, mining production indices are published one month earlier than mineral sales. |
| | 4 | The value of mineral sales is calculated, in general, on a free-on-rail/free-on-board basis. |
| | 5 | In order to improve timeliness, some information for the current month may have been estimated due to late response. These estimates will be revised in future statistical release(s) as soon as more up-to-date information is available. |
| Purpose of the survey | 6 | The monthly mining production and sales survey is conducted by the Department of Mineral Resources (DMR), covering all mining establishments operating in the South African economy. The results of this survey are used to calculate physical volume of mining production indices in order to estimate the gross domestic product (GDP) and its components, which in turn are used to develop and monitor government policy. |
| Scope of the survey | 7 | This survey covers mining establishments conducting activities regarding <ul style="list-style-type: none"> • The extracting, dressing and beneficiating of minerals occurring naturally, for example solids such as coal and ores. |
| Classification | 8 | The 1993 edition of the <i>Standard Industrial Classification of all Economic Activities (SIC)</i> , Fifth Edition, Report No. 09-90-02, was used to classify the statistical units in the survey. The SIC is based on the 1990 <i>International Standard Industrial Classification of all Economic Activities (ISIC)</i> with suitable adaptations for local conditions. Each statistical unit is classified to an industry which reflects the predominant activity of the establishment. Statistics in this publication are presented according to mineral groups and minerals. |
| Statistical unit | 9 | The basic statistical unit for the collection of information is the mining establishment. An establishment is the smallest economic unit that functions as a separate entity. Each statistical unit is classified to an industry (see paragraph 8). |
| Weighting | 10 | The weights, which are used to aggregate minerals to mineral groups and mineral groups to total mining, are based on the value of production derived from detailed information for 2005 supplied by the Department of Mineral Resources (DMR). |

| | | | | | | | | | | | | | | | | | | |
|----------------------------------|---|---|-----|---------------------------------|-----|------------------------|------|--|------|-----------------------|-----|---|-----|-----------------------------|----------|-------------------------|---|---------|
| Seasonal adjustment | 11 | <p>Seasonally adjusted estimates of all items are generated each month, using the X-11 Seasonal Adjustment Program developed by US Bureau of the Census Economic Research and Analyses Division, 1968. Seasonal adjustment is a means of removing the estimated effects of normal seasonal variation from the series so that the effects of other influences on the series can be more clearly recognised. Seasonal adjustment does not aim to remove irregular or non-seasonal influences which may be present in any particular month.</p> <p>Influences that are volatile or unsystematic can still make it difficult to interpret the movement of the series even after adjustment for seasonal variations. This means the month-to-month movements of seasonally adjusted estimates may not be reliable indicators of trend behaviour.</p> | | | | | | | | | | | | | | | | |
| Reliability of estimates | 12 | <p>Figures for the latest 12 months are preliminary.</p> | | | | | | | | | | | | | | | | |
| Historical data | 13 | <p>More comprehensive detail on the method of calculation and historical data in respect of the production indices according to mining mineral groups for the period January 1998 to September 2009 is available in the statistical release P2041, entitled <i>Mining: Production and sales (Preliminary)</i>, published on 12 November 2009 and is available on the Stats SA website: www.statssa.gov.za</p> | | | | | | | | | | | | | | | | |
| Related publications | 14 | <p>Users may also wish to refer to the following publications which are available from Stats SA –</p> <ul style="list-style-type: none"> • <i>Bulletin of Statistics; and</i> • <i>SA Statistics.</i> | | | | | | | | | | | | | | | | |
| Rounding-off of figures | 15 | <p>The figures in the tables have, where necessary, been rounded off to the nearest digit shown. There may, therefore, be slight discrepancies between the sums of the constituent items and the totals shown.</p> | | | | | | | | | | | | | | | | |
| Symbols and abbreviations | 16 | <table border="0"> <tr> <td>DMR</td> <td>Department of Mineral Resources</td> </tr> <tr> <td>GDP</td> <td>Gross domestic product</td> </tr> <tr> <td>ISIC</td> <td>International Standard Industrial Classification</td> </tr> <tr> <td>PGMs</td> <td>Platinum group metals</td> </tr> <tr> <td>SIC</td> <td>Standard Industrial Classification of all Economic Activities</td> </tr> <tr> <td>SNA</td> <td>System of National Accounts</td> </tr> <tr> <td>Stats SA</td> <td>Statistics South Africa</td> </tr> <tr> <td>*</td> <td>Revised</td> </tr> </table> | DMR | Department of Mineral Resources | GDP | Gross domestic product | ISIC | International Standard Industrial Classification | PGMs | Platinum group metals | SIC | Standard Industrial Classification of all Economic Activities | SNA | System of National Accounts | Stats SA | Statistics South Africa | * | Revised |
| DMR | Department of Mineral Resources | | | | | | | | | | | | | | | | | |
| GDP | Gross domestic product | | | | | | | | | | | | | | | | | |
| ISIC | International Standard Industrial Classification | | | | | | | | | | | | | | | | | |
| PGMs | Platinum group metals | | | | | | | | | | | | | | | | | |
| SIC | Standard Industrial Classification of all Economic Activities | | | | | | | | | | | | | | | | | |
| SNA | System of National Accounts | | | | | | | | | | | | | | | | | |
| Stats SA | Statistics South Africa | | | | | | | | | | | | | | | | | |
| * | Revised | | | | | | | | | | | | | | | | | |

Glossary

| | |
|--|---|
| Free-on-rail | Free-on-rail relates to goods sold on the local market where no railage or road transport costs are involved. |
| Free-on-board | Free-on-board relates to goods destined for the export market. Railage, road transport and docking charges are involved but no charges are made for the transport by sea. |
| Index of physical volume of mining production | The index of physical volume of mining production or a production index is a statistical measure of the change in the volume of production. The production index of a mineral group is the ratio between the volume of production of a mineral group in a given period and the volume of production of the same mineral group in the base period. The current base period is 2005. The production in the base period is set at 100. |
| Industry | An industry consists of a group of establishments engaged in the same or similar kinds of economic activity. Industries are defined in the <i>System of National Accounts (SNA)</i> in the same way as in the <i>Standard Industrial Classification (SIC) of all Economic Activities</i> , Fifth Edition of January 1993. |
| PGMs – Platinum group metals | Platinum group metals include platinum; iridium; osmiridium; palladium; rhodium; ruthenium and osmium. |
| Sales | Sales are the total value of sales and transfers-out of goods mined by the mining establishments and the amounts received for installation, erection or assembly or other services rendered. |
| Weight | The weight of a mineral group is the ratio of the sales of a mineral group to the total sales of the mining industry. The weight of a mineral group reflects the importance of the mineral group in the total mining industry. The weights change over time due to quality changes and changes in relative prices. New weights need to be calculated from time to time. The current weights that are being used are based on the total value of mineral sales for 2005. |

General information

Stats SA publishes approximately 300 different statistical releases each year. It is not economically viable to produce them in more than one of South Africa's eleven official languages. Since the releases are used extensively, not only locally but also by international economic and social-scientific communities, Stats SA releases are published in English only.

Stats SA has copyright on this publication. Users may apply the information as they wish, provided that they acknowledge Stats SA as the source of the basic data wherever they process, apply, utilise, publish or distribute the data: and also that they specify that the relevant application and analysis (where applicable) result from their own processing of the data.

Advanced release calendar

An advanced release calendar is disseminated on www.statssa.gov.za

Stats SA products

A complete set of Stats SA publications is available at the Stats SA Library and the following libraries:

National Library of South Africa, Pretoria Division
National Library of South Africa, Cape Town Division
Natal Society Library, Pietermaritzburg
Library of Parliament, Cape Town
Bloemfontein Public Library
Johannesburg Public Library
Eastern Cape Library Services, King William's Town
Central Regional Library, Polokwane
Central Reference Library, Nelspruit
Central Reference Collection, Kimberley
Central Reference Library, Mmabatho

Stats SA also provides a subscription service.

Electronic services

A large range of data is available via on-line services. For more detail about our electronic services, contact Stats SA's user information service at (012) 310 8600.

You can visit us on the Internet at: www.statssa.gov.za

General enquiries

Telephone number (012) 444 3734 / 310 2965 (technical enquiries)
(012) 310 8600 (user information services)
(012) 310 8358 (orders/subscription services)

Fax number: (012) 310 8664 (technical enquiries)

Email: martin.kohler@dmr.gov.za (technical enquiries)
juan-pierret@statssa.gov.za (technical enquiries)
info@statssa.gov.za (user information services)
magdaj@statssa.gov.za (orders/subscription services)

Postal address: Private Bag X44, Pretoria, 0001

Produced by Stats SA