



**Statistics
South Africa**

Preferred supplier of quality statistics



Statistical release

P2041

Mining: Production and sales (Preliminary)

November 2006

**Embargoed until:
11 January 2007
11:00**

Enquiries

User Information Services
Tel.: (012) 310 8600/4892/8390

Forthcoming issue	Expected release date
December 2006	12 February 2007

Contents

Key findings regarding mining production – November 2006 2

Key findings regarding mineral sales – October 2006..... 4

Tables

Table 1 Index of the physical volume of mining production including gold (Base 2000=100) 7

Table 2 Index of the physical volume of mining production excluding gold (Base 2000=100) 7

Table 3 Indices of physical volume of mining production according to mining divisions, mineral groups and minerals (Base 2000=100) 8

Table 4 Contribution of the mining divisions to the total mining production (Base 2000=100) 8

Table 5 Total value of mineral sales including gold (R million) 9

Table 6 Total value of mineral sales excluding gold (R million) 9

Table 7 Total value of mineral sales according to mining divisions, mineral groups and minerals (R million) 10

Table 8 Contribution of the mining divisions to the total value of mineral sales 10

Table 9 Percentage change in indices of mining production between the current month and the corresponding month of the previous year 11

Table 10 Percentage change in indices of mining production between the current quarter and the corresponding quarter of the previous year 11

Table 11 Percentage change in seasonally adjusted indices of mining production between the current month and the previous month 11

Table 12 Percentage change in seasonally adjusted indices of mining production between the current quarter and the previous quarter 12

Table 13 Percentage change in actual value of mineral sales between the current month and the corresponding month of the previous year 12

Table 14 Percentage change in actual value of mineral sales between the current quarter and the corresponding quarter of the previous year 12

Table 15 Percentage change in seasonally adjusted value of mineral sales between the current month and the previous month 13

Table 16 Percentage change in seasonally adjusted value of mineral sales between the current quarter and the previous quarter 13

Explanatory notes 14

Glossary 16

General information 17

Table A – Selected key figures regarding mining production for November 2006

Annual estimates

	November 2006	% change between November 2005 and November 2006	% change between September 2005 to November 2005 and September 2006 to November 2006
Index of the physical volume of mining production (2000=100)			
Gold	63,2	-7,6%	-6,6%
Non-gold minerals	132,3	4,8%	2,8%
Total	114,5	2,8%	1,2%

Shorter term seasonally adjusted estimates

	November 2006	% change between October 2006 and November 2006	% change between June 2006 to August 2006 and September 2006 to November 2006
Index of the physical volume of mining production (2000=100)			
Gold	61,5	-1,1%	-0,4%
Non-gold minerals	133,9	4,6%	1,7%
Total	115,3	3,8%	1,4%

Key findings regarding mining production as at the end of November 2006

Mining production increases

The total mining production for the three months ended November 2006, after seasonal adjustment, increased by 1,4% compared with the previous three months. The increase of 1,4% is higher than the decrease of 0,7% reported for the same period in 2005. The increase of 1,4% in the seasonally adjusted total mining production for the three months ended November 2006, compared with the previous three months was due to an increase of 1,7% in the production of non-gold minerals. The major contributor to the seasonal adjusted increase of 1,7% in the total production of non-gold minerals during the three months ended November 2006 compared with the previous three months was mainly due to the increase in the production of PGM's (+1,1 percentage points) (see Table 4).

Furthermore, the actual total mining production for the three months ended November 2006 increased by 1,2% compared with the three months ended November 2005 (see Table A).

Gold production decreased by 7,6% for the period November 2006 compared to November 2005. Furthermore, gold production after seasonal adjustment decreased by 1,1% for the period November 2006 compared to October 2006.

Figure 1 shows the seasonally adjusted figures and trend series for the index of mining production between January 2002 and November 2006. The trend series has been rising since the beginning of 2002 until November of the same year and started to decline until March 2003 but it had a slight increase until January 2004 and levelled off until October 2004. It started to increase in November 2004 up to April 2005 but declined until January 2006. Since February 2006 the trend started to increase until present.

Figure 1 - Indices of physical volume of total mining production including gold (Month on month)

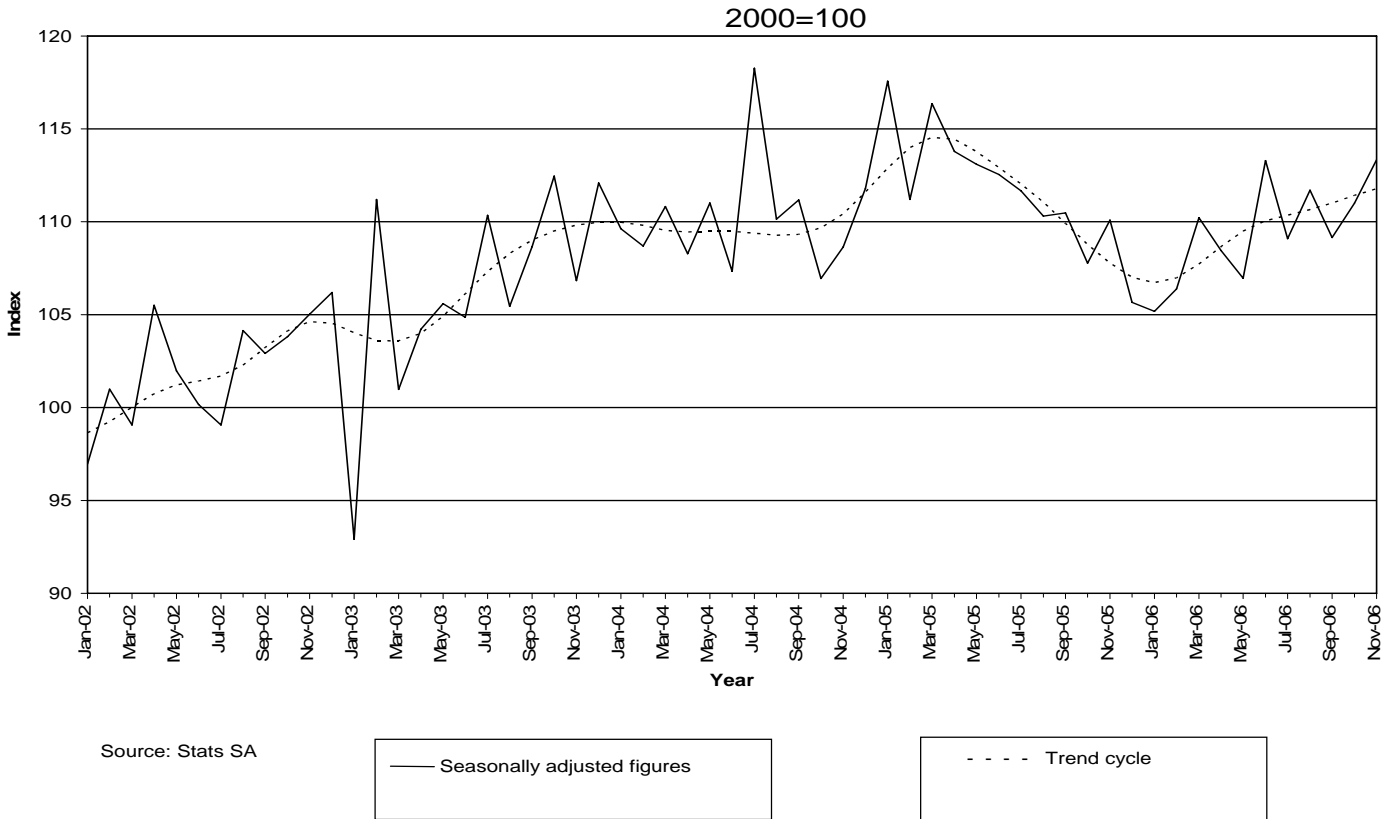


Table B – Selected key figures regarding mineral sales for October 2006

Annual estimates

	October 2006 R million	% change between October 2005 and October 2006	% change between August 2005 to October 2005 and August 2006 to October 2006
Mineral sales			
Gold	3 389,6	79,4%	96,9%
Non-gold minerals	14 697,1	44,3%	43,6%
Total	18 086,7	49,8%	51,5%

**Shorter term seasonally
adjusted estimates**

	October 2006 R million	% change between September 2006 and October 2006	% change between May 2006 to July 2006 and August 2006 to October 2006
Mineral sales			
Gold	3 540,6	-7,8%	12,8%
Non-gold minerals	14 946,9	-1,2%	15,4%
Total	18 487,5	-2,5%	14,9%

Key findings regarding mineral sales as at the end of October 2006

Mineral sales increase

The seasonally adjusted value of mineral sales at current prices for the three months ended October 2006 reflected an increase of 14,9% compared with the previous three months. The increase of 14,9% is higher than the decrease of 1,6% reported for the same period in 2005. Furthermore, the actual value of mineral sales at current prices for the three months ended October 2006 increased by 51,5% compared with the three months ended October 2005 (see Table B).

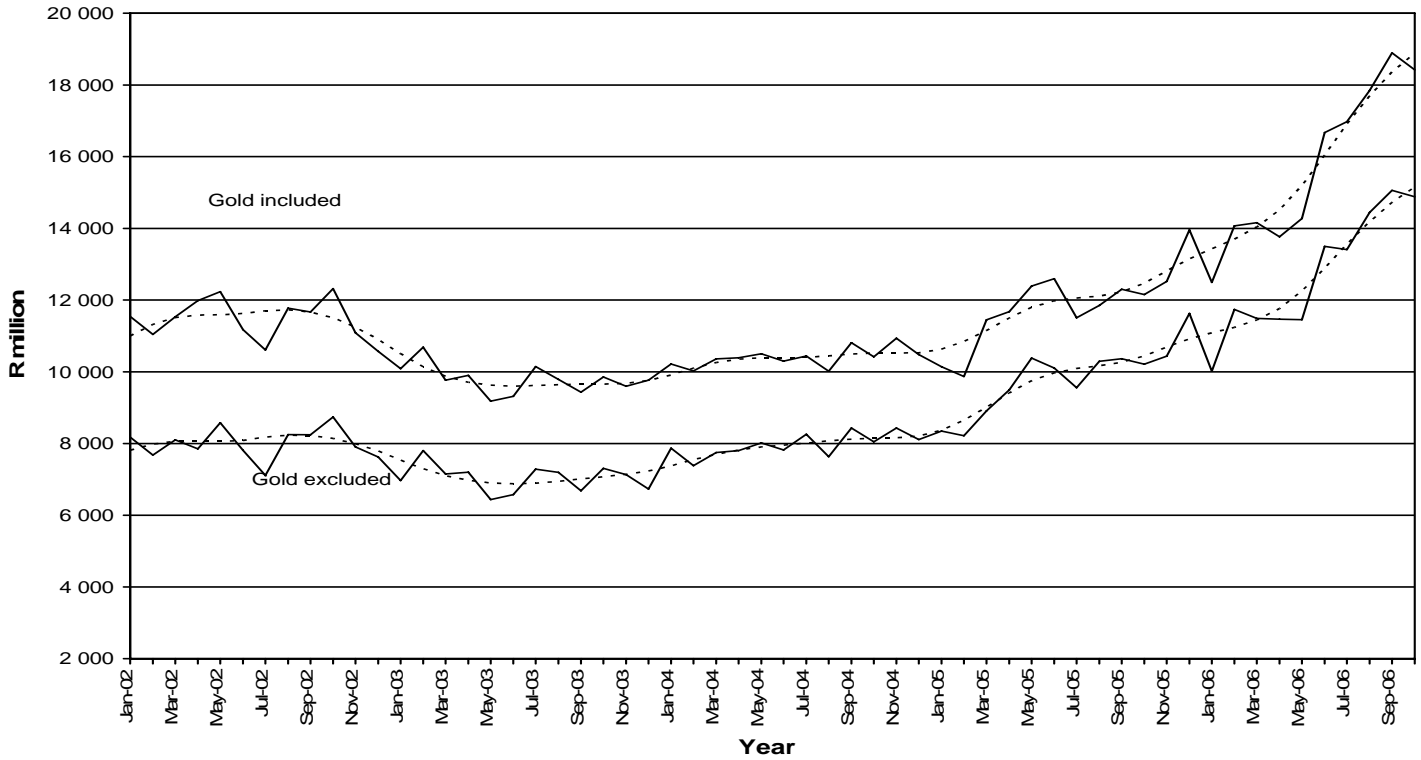
Total sales reached a high of R18,1 billion for the month of October 2006 and it is the fifth consecutive month that the value of mineral sales reached an excess of R17,0 billion in 2006.

The increase of 14,9% in the seasonally adjusted value of mineral sales for the three months ended October 2006 compared with the previous three months can be attributed to an increase of 15,4% (+R5 933,5 million) in the sales of non-gold minerals and 12,8% (+R1 219,6 million) in the sales of gold (see Table 16).

The major contributors to the increase of 51,5% in the actual value of mineral sales at current prices for the three months ended October 2006 compared with the three months ended October 2005 were PGM's (+22,9 percentage points or +R8 549,5 million), gold (+14,3 percentage points or +R5 329,6 million), nickel (+4,7 percentage points or +R1 739,8 million), copper (+2,2 percentage points or +R802,1 million) and coal (+2,1 percentage points or +R793,7million) (see Table 8).

Figure 2 shows the seasonally adjusted figures and trend series of total value of mineral sales between January 2002 and October 2006. Since January 2002 the trend series increased until August 2002 where after it decreased until March 2003. The trend levelled off from April 2003 until December 2003 and since January 2004 the trend cycle was still increasing.

Figure 2 - Total value of mineral sales

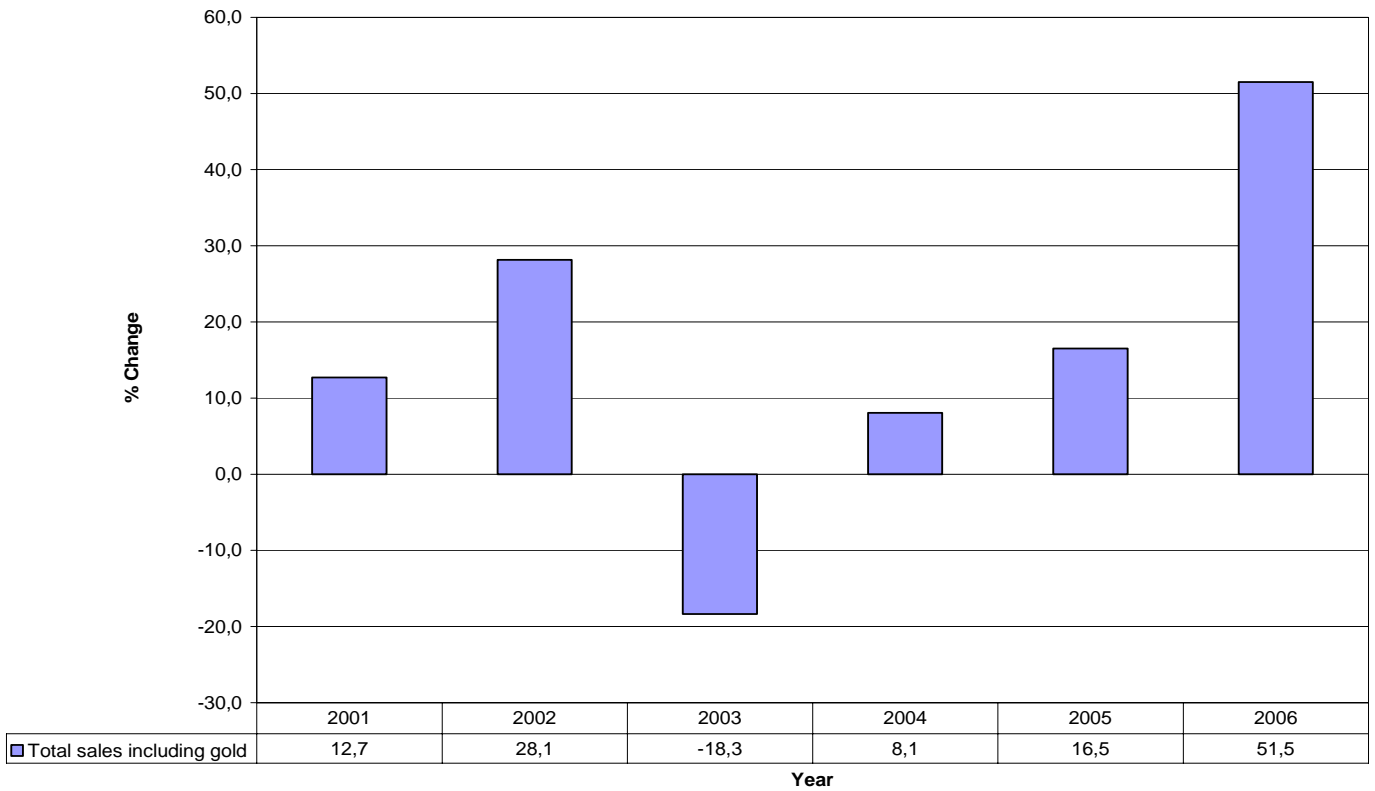


Source: Stats SA



Figure 3 shows the growth in the total value of mineral sales, including gold, for the three months ended October compared with the same period a year ago for the last six years. The three month growth of 51,5% for the three months ended October 2006 compared to the three months ended October 2005 is the highest for the past six years.

Figure 3 - Comparison of the last six years for the total value of mineral sales, including gold, for the three months ended October compared with the three months ended October of the previous year.



**PJ Lehohla
Statistician-General**

Table 1 - Index of the physical volume of mining production including gold (Base 2000=100)

Month	2000	2001	2002	2003	2004	2005	2006
Actual indices							
J	93,8	95,0	89,0	85,1	100,7	107,9	96,8
F	99,3	96,8	94,2	101,7	97,8	98,6	93,6
M	100,0	102,3	99,1	101,8	112,9	119,9	114,3
A	95,0	98,9	102,0	101,0	105,0	110,2	104,8
M	95,7	103,6	102,9	107,1	113,0	115,2	109,0
J	106,8	108,4	104,1	108,6	111,1	116,8	117,7
J	96,9	93,5	99,0	110,7	119,5	113,1	110,6
A	102,1	115,2	107,2	109,1	114,3	114,8	116,3*
S	104,9	98,4	108,1	114,6	117,4	116,7	115,2*
O	100,0	105,1	106,7	114,5	108,2	108,2	110,8*
N	105,5	102,6	107,5	108,6	110,1	111,4	1/ 114,5
D	100,2	97,2	107,0	113,5	113,3	107,4	
Year	100,0	101,4	102,2	106,4	110,3	111,7	
Seasonally adjusted indices							
J	102,9	104,7	97,4	92,9	109,9	117,9	105,5
F	103,7	102,3	101,3	112,4	109,4	111,0	105,6
M	99,8	102,5	99,2	101,5	111,6	117,0	111,1
A	98,7	102,6	106,0	104,6	108,8	114,0	108,7
M	95,5	103,2	102,0	105,8	111,0	113,1	106,8
J	102,0	103,5	99,7	103,8	106,2	111,4	112,0
J	97,0	93,1	97,8	109,1	117,1	110,5	108,1
A	100,0	112,4	104,0	105,4	110,1	110,1	111,3
S	103,3	96,1	104,8	110,0	111,9	110,9	109,6
O	96,2	101,2	103,4	112,1	106,5	107,7	111,1
N	101,7	99,7	105,5	107,4	109,4	111,1	115,3
D	99,3	95,0	104,7	111,0	111,5	105,6	

Table 2 - Index of the physical volume of mining production excluding gold (Base 2000=100)

Month	2000	2001	2002	2003	2004	2005	2006
Actual indices							
J	94,4	98,3	89,6	85,7	110,0	121,6	110,1
F	96,4	98,6	95,8	107,3	104,0	108,7	104,0
M	97,9	104,4	101,0	106,2	123,6	136,2	130,9
A	94,1	102,2	105,3	106,3	115,0	127,0	119,1
M	96,6	108,9	107,0	114,7	124,9	131,3	126,1
J	107,5	112,5	107,3	116,4	121,1	132,3	135,8
J	97,6	93,7	102,4	118,8	133,1	129,2	127,6
A	101,7	124,5	111,2	116,3	125,5	132,2	134,1*
S	105,1	99,7	111,4	122,9	130,0	132,4	131,8*
O	100,6	110,2	111,9	124,2	119,7	122,3	127,6*
N	107,4	106,8	113,3	116,2	121,3	126,2	1/ 132,3
D	100,8	97,7	111,2	123,3	127,0	120,0	
Year	100,0	104,8	105,6	113,2	121,3	126,6	
Seasonally adjusted indices							
J	103,3	108,3	97,9	93,1	119,8	132,5	119,5
F	101,4	105,0	104,3	120,7	118,7	124,6	119,4
M	98,5	105,4	101,8	106,3	122,2	132,7	126,9
A	97,9	106,2	109,6	110,0	119,0	131,2	123,2
M	95,1	107,3	104,9	112,1	121,5	128,0	122,7
J	102,3	107,0	102,4	110,9	115,4	125,8	128,9
J	96,7	92,2	100,2	116,2	129,7	125,5	124,0
A	100,0	121,8	108,0	112,3	120,8	126,7	128,2
S	105,0	98,5	108,8	118,6	124,3	126,1	125,5
O	95,5	105,0	107,6	121,0	117,5	121,8	128,0
N	103,1	103,4	111,1	115,1	121,0	126,5	133,9
D	101,0	96,0	109,3	120,9	125,3	118,4	

1/ Preliminary
* Revised

Table 3 – Indices of physical volume of mining production according to mining divisions, mineral groups and minerals (Base 2000=100)

Minerals	Weights	Actual indices				Seasonally adjusted indices		
		2005	2006		2005	2006		2005
			1/ Nov.	Oct.*		Nov.	Nov.	
Total, gold included	100,0	111,7	114,5	110,8	111,4	115,3	111,1	111,1
Total, gold excluded	74,3	126,6	132,3	127,6	126,2	133,9	128,0	126,5
Gold	25,7	68,4	63,2	62,4	68,4	61,5	62,2	66,6
Iron ore	3,1	118,0	130,0	117,6	98,0	134,4	113,3	101,1
Chrome	1,1	112,6	122,8	120,0	115,6	118,3	115,7	111,5
Copper	1,6	76,7	86,8	86,0	92,4	89,1	83,4	94,0
Manganese ore	1,3	126,7	152,8	149,2	142,8	157,5	156,5	146,3
PGM's	27,6	147,4	162,8	141,2	128,4	171,3	151,8	134,5
Nickel	2,0	115,8	121,6	116,4	114,4	116,7	124,9	110,2
Other metallic minerals	2,9	92,7	84,8	92,8	94,0	86,6	92,4	95,8
Diamonds	8,4	143,3	132,8	139,2	196,4	128,4	133,7	189,1
Coal	20,0	108,8	110,8	122,8	112,8	107,6	112,5	109,3
Building materials	2,6	118,3	142,0	144,8	130,8	131,7	138,5	121,5
Other non-metallic minerals	3,8	102,9	76,4	71,2	90,8	76,2	70,3	90,3

1/ Preliminary
 * Revised

Table 4 - Contribution of the mining divisions to the total mining production (Base 2000=100)

Mining division	Percentage contribution to the total mining production using the weights according to the value of production in the base year	Average seasonally adjusted production index for September 2006 to November 2006	Quarterly percentage change September 2006 to November 2006 compared with the preceding three months	Contribution (percentage points) to the percentage change in the total mining production 1/
Gold	25,7	62,4	-0,4	-0,1
Non-gold minerals				
Iron ore	3,1	127,0	4,4	0,1
Chromium	1,1	115,3	6,7	0,1
Copper	1,6	87,2	-3,5	-0,1
Manganese ore	1,3	158,4	15,1	0,2
PGM's	27,6	155,5	4,2	1,1
Nickel	2,0	120,4	4,2	0,1
Other metallic minerals	2,9	88,9	-6,3	-0,2
Diamonds	8,3	135,9	-0,9	-0,1
Coal	20,0	108,6	-0,6	-0,1
Building materials	2,6	135,3	2,9	0,1
Other non-metallic minerals	3,8	76,3	-12,0	-0,5
Total non-gold minerals	74,3	129,1	1,7	1,3
Total minerals	100	112,0	1,4	1,4

1/ The contribution is calculated by multiplying the quarterly percentage change of each mining division with its corresponding weight in the base year, divided by 100.

Table 5 - Total value of mineral sales including gold (R million)

Month	2000	2001	2002	2003	2004	2005*	2006*
Actual values							
J	6 244,1	9 241,5	11 387,0	9 868,8	9 820,5	9 587,4	11 751,3
F	7 115,7	9 711,7	10 634,4	10 236,5	9 576,1	9 383,8	13 343,3
M	8 958,5	8 134,9	11 639,2	9 829,3	10 396,0	11 477,1	14 162,5
A	7 521,3	8 554,2	11 194,9	9 294,1	9 789,3	11 034,0	13 023,8
M	8 222,7	9 675,9	12 145,3	9 104,1	10 373,3	12 239,8	14 030,3
J	8 222,5	10 640,7	11 637,2	9 745,9	10 856,0	13 360,1	17 812,1
J	7 640,3	10 146,3	10 779,9	10 403,7	10 844,2	12 001,8	17 666,2
A	8 223,4	9 586,4	11 633,5	9 612,0	9 841,7	11 687,6	17 491,2
S	8 568,9	8 711,5	12 115,1	10 008,1	11 693,2	13 524,1	20 904,4
O	8 317,6	9 999,6	12 514,2	9 989,4	10 466,3	12 074,8	1/ 18 086,7
N	9 828,5	9 627,7	11 059,4	9 535,8	10 815,6	12 452,1	
D	9 474,9	11 327,7	10 764,4	9 899,2	10 585,6	13 993,2	
Year	98 338,4	115 358,1	137 504,5	117 526,9	125 057,8	142 815,8	
Seasonally adjusted values							
J	6 161,3	9 142,7	11 384,6	9 869,0	9 905,6	9 900,3	12 080,0
F	7 184,7	9 838,4	10 848,1	10 461,9	9 877,6	9 787,6	13 928,5
M	9 447,7	8 126,2	11 682,4	9 944,3	10 512,4	11 518,1	14 269,9
A	7 759,2	8 956,2	11 872,2	9 821,3	10 359,7	11 655,3	13 866,7
M	8 265,1	9 708,0	12 131,7	9 123,3	10 495,3	12 396,9	14 359,9
J	7 934,2	10 305,7	11 157,8	9 306,3	10 340,8	12 669,1	16 751,8
J	7 513,8	10 325,7	10 753,1	10 570,7	10 954,9	11 883,8	17 040,8
A	8 268,2	9 602,0	11 729,8	9 746,0	9 945,9	11 829,7	17 850,4
S	8 550,5	8 578,4	11 860,1	9 505,3	10 884,9	12 403,9	18 967,7
O	8 366,6	9 927,3	12 345,8	9 914,2	10 408,4	12 120,2	18 487,5
N	9 969,0	9 764,3	11 287,6	9 716,0	10 971,4	12 609,6	
D	9 045,4	10 868,8	10 382,9	9 651,1	10 321,5	13 611,1	

Table 6 - Total value of mineral sales excluding gold (R million)

Month	2000	2001	2002	2003	2004	2005*	2006*
Actual values							
J	4 476,9	7 181,9	8 002,3	6 744,1	7 480,6	7 809,6	9 312,2
F	4 963,8	7 720,8	7 368,2	7 452,6	7 039,8	7 813,9	11 132,0
M	6 688,4	5 912,0	8 110,9	7 140,7	7 710,4	8 840,3	11 385,8
A	5 790,2	6 748,0	7 481,9	6 815,2	7 366,5	8 963,2	10 831,5
M	6 166,9	7 139,7	8 619,3	6 477,2	8 029,3	10 372,9	11 428,5
J	5 908,5	8 245,9	8 035,5	6 759,5	8 107,4	10 562,0	14 219,5
J	5 700,6	7 779,6	7 344,7	7 613,1	8 699,0	10 082,3	14 165,5
A	5 892,6	6 942,5	8 065,2	7 052,7	7 546,9	10 210,5	14 304,3
S	6 479,6	6 219,3	8 562,1	7 092,3	9 114,1	11 390,1	16 651,2
O	6 047,1	6 971,4	8 711,8	7 345,5	8 089,0	10 186,0	1/ 14 697,1
N	7 529,4	6 953,1	7 981,8	7 154,9	8 406,4	10 435,0	
D	7 422,4	8 532,3	7 834,8	6 825,9	8 138,7	11 548,7	
Year	73 066,4	86 346,5	96 118,5	84 473,7	95 728,1	118 214,5	
Seasonally adjusted values							
J	4 405,6	7 099,7	8 016,6	6 748,4	7 558,7	8 108,3	9 603,7
F	4 935,2	7 785,5	7 485,8	7 584,1	7 229,6	8 136,9	11 597,7
M	7 236,1	5 965,4	8 249,7	7 332,1	7 905,7	8 975,2	11 607,8
A	5 842,2	6 930,0	7 738,7	7 116,1	7 772,1	9 471,9	11 571,4
M	6 116,8	7 071,2	8 475,3	6 376,5	8 011,8	10 391,4	11 541,8
J	5 664,2	8 020,1	7 795,6	6 564,9	7 860,2	10 178,1	13 579,5
J	5 611,8	7 943,8	7 249,6	7 715,9	8 772,1	9 932,8	13 474,7
A	6 011,4	7 032,0	8 204,0	7 158,3	7 563,0	10 267,2	14 453,7
S	6 496,2	6 151,1	8 444,3	6 756,7	8 509,4	10 470,2	15 128,9
O	6 280,5	7 114,4	8 767,2	7 362,8	8 035,7	10 178,2	14 946,9
N	7 603,8	7 016,3	8 107,9	7 252,8	8 470,2	10 523,3	
D	6 971,1	8 039,6	7 440,4	6 614,9	7 953,5	11 278,1	

1/ Preliminary

* Revised

Table 7 - Total value of mineral sales according to mining divisions, mineral groups and minerals (R million)

Minerals	Actual value					Seasonally adjusted value		
	2005	2006		2005	2006		2005	
		1/ Oct.	Sep. *	Oct.	Oct.	Sep.	Oct.	
Total, gold included	142 815,8	18 086,7	20 904,4	12 074,8	18 487,5	18 967,7	12 120,2	
Total, gold excluded	118 214,5	14 697,1	16 651,2	10 186,0	14 946,9	15 128,9	10 178,2	
Gold	24 601,2	3 389,6	4 253,2	1 888,9	3 540,6	3 838,8	1 942,0	
Iron ore	7 519,6	762,6	875,2	733,3	788,9	865,7	761,3	
Chrome	1 898,3	203,2	180,9	172,9	191,7	179,7	165,1	
Copper	2 583,0	506,9	471,4	243,1	479,4	460,6	226,9	
Manganese ore	2 200,8	256,5	186,3	55,6	240,9	171,8	53,7	
PGM's	38 448,8	5 765,8	7 465,6	3 214,8	6 288,6	6 382,0	3 471,8	
Nickel	3 923,1	945,2	1 013,9	207,4	1 000,6	951,5	217,5	
Other metallic minerals	4 009,9	612,6	579,9	451,7	486,3	634,2	362,2	
Coal	35 609,5	3 522,1	3 495,8	3 191,7	3 458,6	3 420,5	3 126,1	
Building materials	4 316,6	484,8	486,5	384,6	451,8	455,2	356,3	
- Granite or norite	410,1	34,2	51,5	23,9	39,2	45,5	27,0	
- Lime and limestone	1 313,0	135,1	134,4	111,7	131,9	131,5	108,5	
- Other building materials	2 593,4	315,5	300,6	249,1	280,7	278,2	220,8	
Other non-metallic minerals	17 705,1	1 637,4	1 895,6	1 530,8	1 560,1	1 607,7	1 437,3	

1/ Preliminary
* Revised

Table 8 - Contribution of the mining divisions to the total value of mineral sales

Mining division	Percentage contribution to total mineral sales during August 2005 to October 2005	Percentage change between August 2005 to October 2005 and August 2006 to October 2006	Contribution (percentage points) to the percentage change in the total value of mineral sales 1/	Difference in sales of mining divisions between August 2005 to October 2005 and August 2006 to October 2006 R million
Gold	14,8	96,9	14,3	5 329,6
Non-gold minerals				
Iron ore	5,9	17,2	1,0	377,8
Chromium	1,4	12,1	0,2	62,2
Copper	1,9	113,2	2,2	802,1
Manganese ore	1,1	34,3	0,4	147,1
PGM's	28,7	79,8	22,9	8 549,5
Nickel	2,6	180,7	4,7	1 739,8
Other metallic minerals	2,6	59,1	1,5	569,5
Coal	25,3	8,4	2,1	793,7
Building materials	3,2	22,1	0,7	261,8
Other non-metallic minerals	12,5	12,0	1,5	562,7
Total non-gold minerals	85,2	43,6	37,1	13 866,0
Total minerals	100,0	51,5	51,5	19 195,8

1/ The contribution to the percentage change in sales is calculated by multiplying the quarterly percentage change of each mineral with the percentage contribution to total mineral sales during August 2005 to October 2005, divided by 100.

Table 9 - Percentage change in indices of mining production between the current month and the corresponding month of the previous year

	Actual estimates November 2005	Actual estimates November 2006	% change between November 2005 and November 2006	Difference between November 2005 and November 2006
Gold	68,4	63,2	-7,6%	-5,2
Non-gold minerals	126,2	132,3	4,8%	6,1
Total	111,4	114,5	2,8%	3,1

Table 10 - Percentage change in indices of mining production between the current quarter and the corresponding quarter of the previous year

	Actual estimates September 2005 to November 2005	Actual estimates September 2006 to November 2006	% change between September 2005 to November 2005 and September 2006 to November 2006	Difference between September 2005 to November 2005 and September 2006 to November 2006
Gold	206,8	193,2	-6,6%	-13,6
Non-gold minerals	380,9	391,7	2,8%	10,8
Total	336,3	340,5	1,2%	4,2

Table 11 - Percentage change in the seasonally adjusted indices of mining production between the current month and the previous month

	Actual estimates October 2006	Actual estimates November 2006	% change between October 2006 and November 2006	Difference between October 2006 and November 2006
Gold	62,2	61,5	-1,1%	-0,7
Non-gold minerals	128,0	133,9	4,6%	5,9
Total	111,1	115,3	3,8%	4,2

Table 12 - Percentage change in seasonally adjusted indices of mining production between the current quarter and the previous quarter

	Actual estimates June 2006 to August 2006	Actual estimates September 2006 to November 2006	% change between June 2006 to August 2006 and September 2006 to November 2006	Difference between June 2006 to August 2006 and September 2006 to November 2006
Gold	188,0	187,3	-0,4%	-0,7
Non-gold minerals	381,1	387,4	1,7%	6,3
Total	331,4	336,0	1,4%	4,6

Table 13 - Percentage change in actual value of mineral sales between the current month and the corresponding month of the previous year

	Actual estimates October 2005 R million	Actual estimates October 2006 R million	% change between October 2005 and October 2006	Difference between October 2005 and October 2006
Gold	1 888,9	3 389,6	79,4%	1 500,7
Non-gold minerals	10 186,0	14 697,1	44,3%	4 511,1
Total	12 074,8	18 086,7	49,8%	6 011,9

Table 14 - Percentage change in actual value of mineral sales between the current quarter and the corresponding quarter of the previous year

	Actual estimates August 2005 to October 2005 R million	Actual estimates August 2006 to October 2006 R million	% change between August 2005 to October 2005 and August 2006 to October 2006	Difference between August 2005 to October 2005 and August 2006 to October 2006
Gold	5 500,0	10 829,6	96,9%	5 329,6
Non-gold minerals	31 786,6	45 652,6	43,6%	13 866,0
Total	37 286,5	56 482,3	51,5%	19 195,8

Table 15 - Percentage change in seasonally adjusted value of mineral sales between the current month and the previous month

	Actual seasonal adjusted estimates September 2006 R million	Actual seasonal adjusted estimates October 2006 R million	% change between September 2006 and October 2006	Difference between September 2006 and October 2006
Gold	3 838,8	3 540,6	-7,8%	-298,2
Non-gold minerals	15 128,9	14 946,9	-1,2%	-182,0
Total	18 967,7	18 487,5	-2,5%	-480,2

Table 16 - Percentage change in seasonally adjusted value of mineral sales between the current quarter and the previous quarter

	Actual seasonal adjusted estimates May 2006 to July 2006 R million	Actual seasonal adjusted estimates August 2006 to October 2006 R million	% change between May 2006 to July 2006 and August 2006 to October 2006	Difference between May 2006 to July 2006 and August 2006 to October 2006
Gold	9 556,5	10 776,1	12,8%	1 219,6
Non-gold minerals	38 596,0	44 529,5	15,4%	5 933,5
Total	48 152,5	55 305,6	14,9%	7 153,1

Explanatory notes

- Introduction**
- 1 Statistics South Africa (Stats SA) publishes monthly information regarding the mining industry on the basis of mining production figures and mineral sales furnished by the Minerals Bureau, Department of Minerals and Energy. This statistical release contains detailed information regarding indices of the physical volume of mining production and the total value of mineral sales according to mining divisions and mineral groups on a monthly basis.
 - 2 In accordance with international practice, the indices have to be re-based every five years to a new base year. The base year of the index of the physical volume of mining production is currently 2000=100. Both actual and seasonally adjusted figures are presented.
 - 3 Due to mining production figures being available earlier than mineral sales figures, mining production indices are published one month earlier than mineral sales.
 - 4 The value of mineral sales is calculated, in general, on a free-on-rail/free-on-board basis.
 - 5 In order to improve timeliness, some information for the current month may have been estimated due to late response. These estimates will be revised in future statistical release(s) as soon as more up-to-date information is available.
- Scope of the survey**
- 6 This survey covers mining establishments conducting activities regarding -
 - The extracting, dressing and beneficiating of minerals occurring naturally, for example solids such as coal and ores.
- Classification**
- 7 The 1993 edition of the *Standard Industrial Classification of all Economic Activities (SIC)*, Fifth Edition, Report No. 09-90-02, was used to classify the statistical units in the survey. The SIC is based on the 1990 *International Standard Industrial Classification of all Economic Activities (ISIC)* with suitable adaptations for local conditions. Statistics in this publication are presented at SIC division, major group and subgroup level. Each statistical unit is classified to an industry which reflects the predominant activity of the establishment.
- Statistical unit**
- 8 The basic statistical unit for the collection of information is the mining establishment. An establishment is the smallest economic unit that functions as a separate entity. Each statistical unit is classified to an industry (see paragraph 7).
- Weighting**
- 9 The weights which are used to aggregate minerals to mineral groups and mineral groups to total mining are based on the value of production derived from detailed information for 2000 supplied by the Minerals Bureau, Department of Minerals and Energy.
- Seasonal adjustment**
- 10 Seasonally adjusted estimates of all items are generated each month, using the X-11 Seasonal Adjustment Program developed by US Bureau of the Census Economic Research and Analyses Division, 1968. Seasonal adjustment is a means of removing the estimated effects of normal seasonal variation from the series so that the effects of other influences on the series can be more clearly recognised. Seasonal adjustment does not aim to remove irregular or non-seasonal influences which may be present in any particular month.

Influences that are volatile or unsystematic can still make it difficult to interpret the movement of the series even after adjustment for seasonal variations. This means the month-to-month movements of seasonally adjusted estimates may not be reliable indicators of trend behaviour.

Reliability of estimates	11	Estimates are subject to sampling and non-sampling errors. Figures for the latest month are preliminary.
Historical data	12	More comprehensive detail on the method of calculation and historical data in respect of the production indices according to mining mineral groups for the period February 1990 to November 2002 is available in statistical release P2041.1, entitled <i>Mining statistics: Indices of the physical volume of mining production, Base: 2000=100, February 1990 to November 2002</i> , published on 11 February 2003 on the Stats SA website: www.statssa.gov.za
Related publications	13	Users may also wish to refer to the following publications which are available from Stats SA - <ul style="list-style-type: none">• <i>Bulletin of Statistics.</i>• <i>SA Statistics.</i>
Unpublished statistics	14	In some cases Stats SA can also make available statistics not included in standard publications. The statistics can be made available via computer printouts or diskette or CD. Generally, a charge is made for providing unpublished statistics.
Rounding-off of figures	15	The figures in the tables have, where necessary, been rounded off to the nearest digit shown. There may, therefore, be slight discrepancies between the sums of the constituent items and the totals shown.

Glossary

Free-on-rail	Free-on-rail relates to goods sold on the local market where no railage or road transport costs are involved.
Free-on-board basis	Free-on-board relates to goods destined for the export market. Railage, road transport and docking charges are involved but no charges are made for the transport by sea.
Index of physical volume of mining production	The index of physical volume of mining production or a production index is a statistical measure of the change in the volume of production. The production index of a mineral group is the ratio between the volume of production of a mineral group in a given period and the volume of production of the same mineral group in the base period. The current base period is 2000. The production in the base period is set at 100.
Industry	An industry consists of a group of establishments engaged in the same or similar kinds of economic activity. Industries are defined in the <i>System of National Accounts (SNA)</i> in the same way as in the <i>Standard Industrial Classification (SIC) of all Economic Activities</i> , Fifth Edition of January 1993.
PGM' s - Platinum Group Metals	Platinum Group Metals include platinum; iridium; osmiridium; palladium; rhodium; ruthenium and osmium.
Sales	Sales are the total value of sales and transfers-out of goods mined by the mining establishments and the amounts received for installation, erection or assembly or other services rendered.
Weight	The weight of a mineral group is the ratio of the sales of a mineral group to the total sales of the mining industry in the base year. The weight of a mineral group reflects the importance of the mineral group in the total mining industry. The weights change over time due to quality changes and changes in relative prices. New weights need to be calculated from time to time.

General information

Stats SA publishes approximately 300 different statistical releases each year. It is not economically viable to produce them in more than one of South Africa's eleven official languages. Since the releases are used extensively, not only locally but also by international economic and social-scientific communities, Stats SA releases are published in English.

Stats SA has copyright on this publication. Users may apply the information as they wish, provided that they acknowledge Stats SA as the source of the basic data wherever they process, apply, utilise, publish or distribute the data; and also that they specify that the relevant application and analysis (where applicable) result from their own processing of the data.

Advanced release calendar

An advanced release calendar is disseminated on www.statssa.gov.za

Stats SA products

A complete set of Stats SA publications is available in the Stats SA Library, and in the following public libraries:

National Library of South Africa, Pretoria Division
National Library of South Africa, Cape Town Division
Natal Society Library, Pietermaritzburg
Library of Parliament, Cape Town
Bloemfontein Public Library
Johannesburg Public Library
Eastern Cape Library Services, King William's Town
Central Regional Library, Polokwane
Central Reference Library, Nelspruit
Central Reference Collection, Kimberley
Central Reference Library, Mmabatho

Stats SA also provides a subscription service.

Electronic services

Large ranges of data are available via on-line services, diskette, CD and computer printouts. For more details about our electronic data services, contact (012) 310 8600/8390/8351/4892/8496/8095.

You can visit us on the Internet at: www.statssa.gov.za

Enquiries

Telephone number (012) 317 8485 (technical enquiries)
 (012) 310 2965/ 8220 (technical enquiries)
 (012) 310 8161 (orders)
 (012) 310 4883/ 4885/ 8018 (library)

Fax number: (012) 310 8664 (technical enquiries)

email: martin.kohler@dme.gov.za (technical enquiries)
 juan-pierret@statssa.gov.za (technical enquiries)
 info@statssa.gov.za (user information services)
 distribution@statssa.gov.za (orders)

Postal address: Private Bag X44, Pretoria, 0001

Produced by Statistics South Africa and Department of Minerals and Energy