



The South Africa I know, the home I understand



Statistical release

P2041

Mining: Production and sales (Preliminary)

March 2014

**Embargoed until:
13 May 2014
11:30**

Enquiries:

User Information Services
Tel: (012) 310 8600

Forthcoming issue:

April 2014

Expected release date:

12 June 2014

Contents

Production: results for March 2014 **2**

 Table A – Key growth rates in the volume of mining production..... 2

 Table B – Seasonally adjusted index of the volume of mining production for the latest three months by mineral group and mineral (Base: 2010=100)..... 2

 Figure 1 – Volume of mining production (Base: 2010=100) 3

 Figure 2 – Volume of mining production (Base: 2010=100): year-on-year percentage change..... 3

Sales: results for February 2014 **4**

 Table C – Key growth rates in mineral sales at current prices..... 4

Tables **5**

 Table 1 – Index of the volume of mining production (Base: 2010=100)..... 5

 Table 2 – Year-on-year percentage change in the volume of mining production..... 5

 Table 3 – Seasonally adjusted volume of total mining production 5

 Table 4 – Index of the volume of mining production by mineral group and mineral (Base: 2010=100)..... 6

 Table 5 – Seasonally adjusted index of the volume of mining production by mineral group and mineral (Base: 2010=100) 6

 Table 6 – Year-on-year percentage change in the volume of mining production by mineral group and mineral..... 7

 Table 7 – Contribution of each mineral group and mineral to the year-on-year percentage change in the volume of mining production (percentage points) 7

 Table 8 – Mineral sales at current prices (R million) 8

 Table 9 – Year-on-year percentage change in mineral sales at current prices..... 8

 Table 10 – Seasonally adjusted total mineral sales at current prices 8

 Table 11 – Mineral sales at current prices by mineral group and mineral (R million) 9

 Table 12 – Year-on-year percentage change in mineral sales at current prices by mineral group and mineral..... 9

 Table 13 – Contribution of each mineral group and mineral to the year-on-year percentage change in mineral sales at current prices (percentage points) 9

Survey information **10**

Technical notes **11**

Glossary **12**

Technical enquiries **12**

General information **13**

Production: results for March 2014

Table A – Key growth rates in the volume of mining production

	Oct-13	Nov-13	Dec-13	Jan-14	Feb-14	Mar-14
Year-on-year % change, unadjusted	22,9	5,2	11,8	3,9	-4,5	-4,7
Month-on-month % change, seasonally adjusted	7,4	-2,5	5,0	-3,7	-5,7	-5,5
3-month % change, seasonally adjusted ^{1/}	-0,5	-1,5	2,5	2,0	1,1	-6,8

^{1/} Percentage change between the previous three months and the three months ending in the month indicated.

Mining production decreased by 4,7% year-on-year in March 2014. PGMs decreased by 44,3% and was a significant negative contributor (contributing -10,1 percentage points) to the 4,7% decrease – see Tables 6 and 7.

Seasonally adjusted mining production decreased by 5,5% in March 2014 compared with February 2014. This followed month-on-month changes of -5,7% in February 2014 and -3,7% in January 2014.

Table B – Seasonally adjusted index of the volume of mining production for the latest three months by mineral group and mineral (Base: 2010=100)

Mineral group and mineral	Weight (2010)	Oct – Dec 2013	Jan – Mar 2014	% change between Oct – Dec 2013 and Jan – Mar 2014	Contribution (% points) to the % change in total mining production
Gold	17,7	84,7	80,6	-4,8	-0,7
Iron ore	14,4	133,1	129,5	-2,7	-0,5
Chromium ore	2,2	129,0	117,3	-9,1	-0,3
Copper ¹	1,4	100,7	99,0	-1,7	0,0
Manganese ore ¹	3,6	171,7	161,6	-5,9	-0,4
PGMs	24,6	93,7	74,7	-20,3	-4,5
Nickel ¹	2,0	141,2	128,2	-9,2	-0,3
Other metallic minerals ¹	2,5	76,2	88,5	16,1	0,3
Diamonds ¹	3,1	120,1	80,3	-33,1	-1,2
Coal	23,7	96,2	97,9	1,8	0,4
Building materials	1,6	115,7	108,1	-6,6	-0,1
Other non-metallic minerals ¹	3,2	68,5	80,5	17,5	0,4
Total	100,0	102,9	95,9	-6,8	-6,8

¹ Not seasonally adjusted, because the presence of seasonality is not significant. See notes 4 and 5 on page 11.

Seasonally adjusted mining production decreased by 6,8% in the first quarter of 2014 compared with the previous quarter. The main contributors to the 6,8% decrease were PGMs (contributing -4,5 percentage points) and diamonds (contributing -1,2 percentage points) – see Table B.

Figure 1 – Volume of mining production (Base: 2010=100)

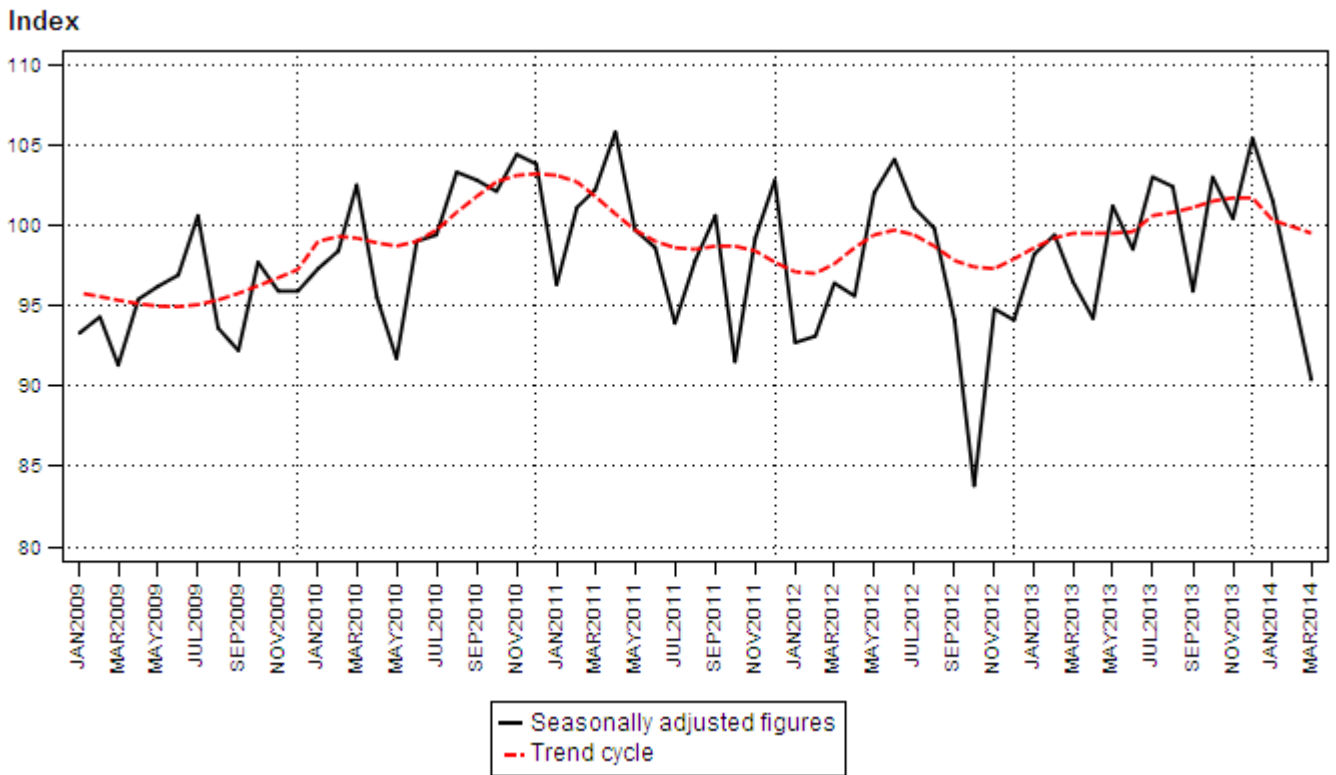
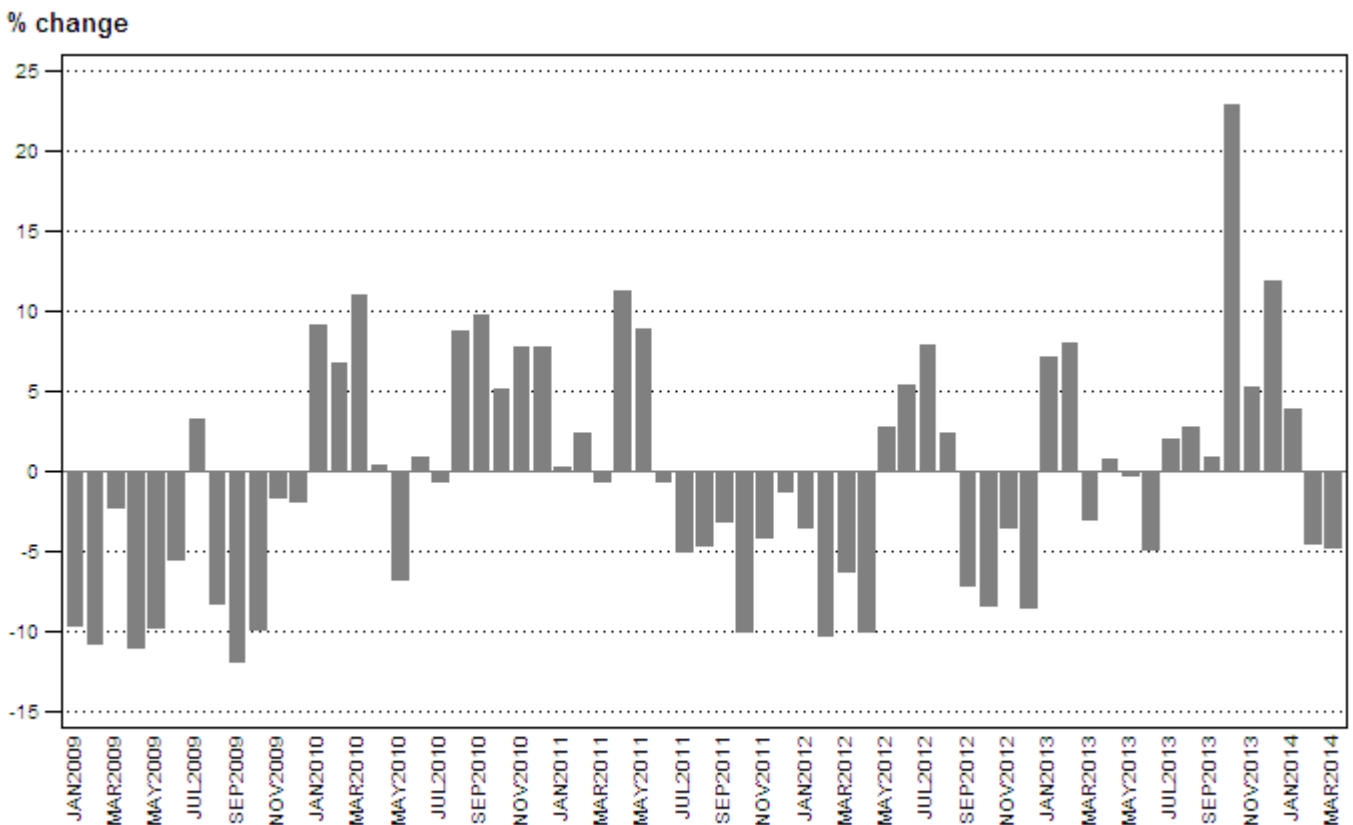


Figure 2 – Volume of mining production (Base: 2010=100): year-on-year percentage change



Sales: results for February 2014

Table C – Key growth rates in mineral sales at current prices

	Sep-13	Oct-13	Nov-13	Dec-13	Jan-14	Feb-14
Year-on-year % change, unadjusted	10,1	17,2	9,0	1,2	8,1	11,1
Month-on-month % change, seasonally adjusted	-5,4	4,4	-3,1	-0,3	6,3	2,4
3-month % change, seasonally adjusted 1/	3,6	6,0	0,3	0,3	-0,3	4,0

1/ Percentage change between the previous three months and the three months ending in the month indicated.

Mineral sales increased by 11,1% year-on-year in February 2014. The highest positive growth rates were recorded for ‘other’ non-metallic minerals (85,9%), manganese ore (72,5%), ‘other’ metallic minerals (62,6%), nickel (52,9%) and iron ore (52,4%). The major contributors to the 11,1% increase were iron ore (contributing 7,0 percentage points), ‘other’ non-metallic minerals (contributing 5,0 percentage points) and PGMs (contributing 2,2 percentage points) – see Tables 12 and 13.

Seasonally adjusted mineral sales at current prices increased by 2,4% in February 2014 compared with January 2014. This followed month-on-month changes of 6,3% in January 2014 and -0,3% in December 2013.

PJ Lehohla
Statistician-General

Tables

Table 1 – Index of the volume of mining production (Base: 2010=100)

Month	2008	2009	2010	2011	2012	2013 1/	2014 1/
Jan	87,4	79,0	86,2	86,4	83,4	89,3	92,8
Feb	92,5	82,6	88,1	90,2	81,0	87,5	83,6
Mar	94,7	92,6	102,8	102,2	95,9	93,0	88,6
Apr	101,1	90,0	90,4	100,5	90,4	91,1	
May	108,6	98,1	91,5	99,6	102,3	102,1	
Jun	108,9	102,9	103,8	103,2	108,8	103,6	
Jul	99,0	102,3	101,7	96,6	104,2	106,3	
Aug	107,9	99,1	107,8	102,8	105,3	108,1	
Sep	113,2	99,8	109,5	106,1	98,6	99,5	
Oct	109,6	98,7	103,7	93,3	85,6	105,2	
Nov	102,3	100,7	108,5	104,0	100,4	105,6	
Dec	100,4	98,5	106,1	104,7	95,8	107,1	
Year	102,1	95,4	100,0	99,1	96,0	99,9	

1/ Preliminary.

Table 2 – Year-on-year percentage change in the volume of mining production

Month	2009	2010	2011	2012	2013	2014	2014 year-to-date
Jan	-9,6	9,1	0,2	-3,5	7,1	3,9	3,9
Feb	-10,8	6,7	2,4	-10,2	8,0	-4,5	-0,2
Mar	-2,2	11,0	-0,6	-6,2	-3,0	-4,7	-1,8
Apr	-11,0	0,5	11,2	-10,0	0,8		
May	-9,7	-6,7	8,9	2,7	-0,2		
Jun	-5,5	0,9	-0,6	5,4	-4,8		
Jul	3,3	-0,5	-5,0	7,9	2,0		
Aug	-8,2	8,8	-4,6	2,4	2,7		
Sep	-11,8	9,7	-3,1	-7,1	0,9		
Oct	-9,9	5,0	-10,0	-8,3	22,9		
Nov	-1,5	7,7	-4,1	-3,5	5,2		
Dec	-1,9	7,7	-1,3	-8,5	11,8		
Year	-6,6	4,8	-0,9	-3,2	4,1		

Table 3 – Seasonally adjusted volume of total mining production

Month	Index (Base: 2010=100)				Month-on-month % change			
	2011	2012	2013	2014	2011	2012	2013	2014
Jan	96,3	92,7	98,2	101,5	-7,2	-9,8	4,4	-3,7
Feb	101,1	93,1	99,4	95,7	5,0	0,4	1,2	-5,7
Mar	102,2	96,4	96,5	90,4	1,1	3,5	-2,9	-5,5
Apr	105,8	95,6	94,2		3,5	-0,8	-2,4	
May	99,7	102,0	101,2		-5,8	6,7	7,4	
Jun	98,6	104,1	98,5		-1,1	2,1	-2,7	
Jul	93,9	101,1	103,0		-4,8	-2,9	4,6	
Aug	97,8	99,8	102,4		4,2	-1,3	-0,6	
Sep	100,6	94,1	95,9		2,9	-5,7	-6,3	
Oct	91,5	83,8	103,0		-9,0	-10,9	7,4	
Nov	99,2	94,8	100,4		8,4	13,1	-2,5	
Dec	102,8	94,1	105,4		3,6	-0,7	5,0	

Table 4 – Index of the volume of mining production by mineral group and mineral (Base: 2010=100) 1/

Mineral group and mineral	Weight (2010)	Oct-13	Nov-13	Dec-13	Jan-14	Feb-14	Mar-14
Gold	17,7	90,7	92,0	83,0	66,9	75,2	81,7
Iron ore	14,4	119,2	125,4	161,2	126,3	109,4	130,1
Chromium ore	2,2	140,4	133,2	117,3	103,9	107,5	113,3
Copper	1,4	115,7	102,1	84,2	108,8	93,3	95,0
Manganese ore	3,6	167,8	169,0	178,4	156,5	171,9	156,5
PGMs	24,6	96,4	99,9	113,5	78,2	48,3	48,1
Nickel	2,0	140,4	143,3	139,9	139,5	115,0	130,1
Other metallic minerals	2,5	91,1	63,9	73,6	87,2	80,3	97,9
Diamonds	3,1	111,1	117,2	132,1	89,9	68,9	82,1
Coal	23,7	103,4	101,6	79,5	93,9	93,2	94,5
Building materials	1,6	134,5	128,3	83,7	95,5	102,5	100,0
Other non-metallic minerals	3,2	72,8	63,4	69,4	80,0	82,0	79,4
Total	100,0	105,2	105,6	107,1	92,8	83,6	88,6

1/ All values in this table are preliminary.

Table 5 – Seasonally adjusted index of the volume of mining production by mineral group and mineral (Base: 2010=100)

Mineral group and mineral	Oct-13	Nov-13	Dec-13	Jan-14	Feb-14	Mar-14	Month-on-month % change
Gold	86,9	85,8	81,3	81,3	79,3	81,2	2,4
Iron ore	114,9	126,8	157,6	132,9	123,5	132,1	7,0
Chromium ore	132,3	128,5	126,3	119,2	115,3	117,4	1,8
Copper ¹	115,7	102,1	84,2	108,8	93,3	95,0	1,8
Manganese ore ¹	167,8	169,0	178,4	156,5	171,9	156,5	-9,0
PGMs	99,0	88,2	93,9	91,2	79,7	53,3	-33,1
Nickel ¹	140,4	143,3	139,9	139,5	115,0	130,1	13,1
Other metallic minerals ¹	91,1	63,9	73,6	87,2	80,3	97,9	21,9
Diamonds ¹	111,1	117,2	132,1	89,9	68,9	82,1	19,2
Coal	98,8	96,9	93,0	98,9	99,2	95,6	-3,6
Building materials	119,1	112,1	115,8	124,2	104,7	95,5	-8,8
Other non-metallic minerals ¹	72,8	63,4	69,4	80,0	82,0	79,4	-3,2
Total	103,0	100,4	105,4	101,5	95,7	90,4	-5,5

¹ Not seasonally adjusted, because the presence of seasonality is not significant. See notes 4 and 5 on page 11.

Table 6 – Year-on-year percentage change in the volume of mining production by mineral group and mineral

Mineral group and mineral	Oct-13	Nov-13	Dec-13	Jan-14	Feb-14	Mar-14
Gold	74,4	35,5	12,2	-6,3	-3,7	-2,9
Iron ore	37,3	8,0	34,8	12,4	9,1	9,0
Chromium ore	44,4	6,3	21,1	5,6	-6,4	-7,4
Copper	194,4	12,8	-15,2	14,4	2,6	0,6
Manganese ore	43,4	32,2	33,1	24,3	39,6	24,6
PGMs	16,4	-4,5	14,0	4,0	-35,8	-44,3
Nickel	15,4	16,6	20,9	27,4	16,2	7,1
Other metallic minerals	13,2	-34,8	-5,3	20,4	67,3	67,9
Diamonds	25,4	27,7	12,4	5,9	-9,6	14,2
Coal	-1,9	-3,8	-11,2	-5,0	-3,9	6,8
Building materials	27,2	7,1	13,6	14,5	-5,3	-4,0
Other non-metallic minerals	-16,9	-22,2	-7,0	-0,9	16,8	6,1
Total	22,9	5,2	11,8	3,9	-4,5	-4,7

Table 7 – Contribution of each mineral group and mineral to the year-on-year percentage change in the volume of mining production (percentage points)

Mineral group and mineral	Oct-13	Nov-13	Dec-13	Jan-14	Feb-14	Mar-14
Gold	8,0	4,2	1,7	-0,9	-0,6	-0,5
Iron ore	5,5	1,3	6,3	2,2	1,5	1,7
Chromium ore	1,1	0,2	0,5	0,1	-0,2	-0,2
Copper	1,3	0,2	-0,2	0,2	0,0	0,0
Manganese ore	2,1	1,5	1,7	1,2	2,0	1,2
PGMs	3,9	-1,2	3,6	0,8	-7,6	-10,1
Nickel	0,4	0,4	0,5	0,7	0,4	0,2
Other metallic minerals	0,3	-0,8	-0,1	0,4	0,9	1,1
Diamonds	0,8	0,8	0,5	0,2	-0,3	0,3
Coal	-0,6	-0,9	-2,5	-1,3	-1,0	1,5
Building materials	0,5	0,1	0,1	0,2	-0,1	-0,1
Other non-metallic minerals	-0,5	-0,6	-0,2	0,0	0,4	0,2
Total	22,9	5,2	11,8	3,9	-4,5	-4,7

Table 8 – Mineral sales at current prices (R million)

Month	2008	2009	2010	2011	2012	2013 1/	2014 1/
Jan	17 442,2	17 263,9	19 185,1	25 367,7	28 808,5	28 931,5	31 281,2
Feb	21 737,4	19 906,3	20 408,4	27 544,0	29 223,7	30 416,1	33 791,4
Mar	25 894,1	22 093,9	23 860,1	31 486,9	30 795,3	34 779,3	
Apr	25 520,6	20 733,6	23 551,4	27 388,9	26 744,9	30 621,4	
May	26 737,6	18 463,5	25 535,2	27 851,9	31 234,1	29 136,2	
Jun	29 881,0	20 337,3	25 882,9	33 949,7	33 918,3	33 736,1	
Jul	27 164,7	20 019,7	25 588,6	27 910,5	30 864,8	31 319,1	
Aug	27 064,3	20 144,0	25 897,8	30 304,5	31 359,2	34 058,8	
Sep	27 830,7	20 737,7	27 994,7	35 735,9	30 315,5	33 378,0	
Oct	27 191,4	19 909,8	27 535,5	33 429,6	28 217,1	33 066,7	
Nov	23 991,0	20 128,7	27 114,9	35 304,5	29 881,9	32 584,8	
Dec	20 259,5	21 626,2	27 737,9	34 557,3	32 909,2	33 301,7	
Total	300 714,5	241 364,6	300 292,5	370 831,4	364 272,5	385 329,7	

1/ Preliminary.

Table 9 – Year-on-year percentage change in mineral sales at current prices

Month	2009	2010	2011	2012	2013	2014	2014 year-to-date
Jan	-1,0	11,1	32,2	13,6	0,4	8,1	8,1
Feb	-8,4	2,5	35,0	6,1	4,1	11,1	9,6
Mar	-14,7	8,0	32,0	-2,2	12,9		
Apr	-18,8	13,6	16,3	-2,4	14,5		
May	-30,9	38,3	9,1	12,1	-6,7		
Jun	-31,9	27,3	31,2	-0,1	-0,5		
Jul	-26,3	27,8	9,1	10,6	1,5		
Aug	-25,6	28,6	17,0	3,5	8,6		
Sep	-25,5	35,0	27,7	-15,2	10,1		
Oct	-26,8	38,3	21,4	-15,6	17,2		
Nov	-16,1	34,7	30,2	-15,4	9,0		
Dec	6,7	28,3	24,6	-4,8	1,2		
Total	-19,7	24,4	23,5	-1,8	5,8		

Table 10 – Seasonally adjusted total mineral sales at current prices 2/

Month	R million				Month-on-month % change			
	2011	2012	2013	2014	2011	2012	2013	2014
Jan	28 456,3	31 864,5	31 674,8	34 108,5	5,4	-4,8	-0,3	6,3
Feb	29 218,3	30 653,3	31 622,3	34 920,0	2,7	-3,8	-0,2	2,4
Mar	30 043,1	29 396,3	33 415,7		2,8	-4,1	5,7	
Apr	28 448,0	28 078,2	32 423,0		-5,3	-4,5	-3,0	
May	28 215,7	31 851,6	29 790,8		-0,8	13,4	-8,1	
Jun	31 891,0	31 871,1	31 617,4		13,0	0,1	6,1	
Jul	28 023,2	31 179,9	31 740,7		-12,1	-2,2	0,4	
Aug	30 008,4	31 038,0	33 653,1		7,1	-0,5	6,0	
Sep	33 912,2	28 851,7	31 849,2		13,0	-7,0	-5,4	
Oct	33 539,4	28 299,4	33 237,7		-1,1	-1,9	4,4	
Nov	35 005,4	29 545,3	32 191,7		4,4	4,4	-3,1	
Dec	33 478,4	31 781,5	32 101,2		-4,4	7,6	-0,3	

Table 11 – Mineral sales at current prices by mineral group and mineral (R million) 1/

Mineral group and mineral	Sep-13	Oct-13	Nov-13	Dec-13	Jan-14	Feb-14
Gold	4 154,2	4 729,4	3 805,3	3 813,4	3 303,1	4 015,0
Iron ore	5 490,5	5 442,1	5 432,3	6 282,1	5 286,5	6 233,1
Chromium ore	961,1	1 170,8	1 107,4	1 096,8	1 002,7	1 245,0
Copper	582,2	533,7	562,6	336,6	479,8	743,9
Manganese ore	1 095,3	742,2	1 412,3	1 460,8	1 481,6	1 240,3
PGMs	8 407,3	7 190,1	7 380,4	6 975,5	7 308,1	7 319,0
Nickel	489,5	519,6	852,9	598,6	699,7	824,8
Other metallic minerals	1 045,7	603,4	809,4	944,0	725,4	801,3
Coal	8 203,4	9 618,9	9 021,2	8 859,2	8 458,1	7 317,5
Building materials	773,9	914,1	822,3	599,5	694,5	763,9
Other non-metallic minerals	2 174,9	1 602,4	1 378,7	2 335,3	1 841,6	3 287,5
Total	33 378,0	33 066,7	32 584,8	33 301,7	31 281,2	33 791,4

1/ All values in this table are preliminary.

Table 12 – Year-on-year percentage change in mineral sales at current prices by mineral group and mineral

Mineral group and mineral	Sep-13	Oct-13	Nov-13	Dec-13	Jan-14	Feb-14
Gold	-37,3	-6,1	-38,6	-35,3	-44,3	-34,4
Iron ore	32,7	34,7	60,3	37,9	1,7	52,4
Chromium ore	55,3	106,1	33,9	63,1	30,7	48,7
Copper	121,1	60,5	18,3	-20,2	23,0	43,8
Manganese ore	17,6	0,1	40,4	11,1	39,8	72,5
PGMs	27,9	27,1	24,4	-3,2	35,4	9,9
Nickel	-12,3	-12,4	37,9	37,1	35,8	52,9
Other metallic minerals	26,1	-26,5	75,2	-32,3	-14,3	62,6
Coal	12,1	20,0	6,4	7,5	15,5	-7,8
Building materials	16,1	33,2	6,5	13,4	19,7	4,2
Other non-metallic minerals	21,6	-7,4	-20,0	3,9	98,6	85,9
Total	10,1	17,2	9,0	1,2	8,1	11,1

Table 13 – Contribution of each mineral group and mineral to the year-on-year percentage change in mineral sales at current prices (percentage points)

Mineral group and mineral	Sep-13	Oct-13	Nov-13	Dec-13	Jan-14	Feb-14
Gold	-8,2	-1,1	-8,0	-6,3	-9,1	-6,9
Iron ore	4,5	5,0	6,8	5,2	0,3	7,0
Chromium ore	1,1	2,1	0,9	1,3	0,8	1,3
Copper	1,1	0,7	0,3	-0,3	0,3	0,7
Manganese ore	0,5	0,0	1,4	0,4	1,5	1,7
PGMs	6,1	5,4	4,8	-0,7	6,6	2,2
Nickel	-0,2	-0,3	0,8	0,5	0,6	0,9
Other metallic minerals	0,7	-0,8	1,2	-1,4	-0,4	1,0
Coal	2,9	5,7	1,8	1,9	3,9	-2,0
Building materials	0,4	0,8	0,2	0,2	0,4	0,1
Other non-metallic minerals	1,3	-0,5	-1,2	0,3	3,2	5,0
Total	10,1	17,2	9,0	1,2	8,1	11,1

Survey information

Introduction	1	Statistics South Africa (Stats SA) publishes monthly mining production indices and mineral sales based on the information furnished by the Department of Mineral Resources (DMR). Data in this release are presented by mineral group and mineral.
	2	In accordance with international practice, the indices are usually re-based every five years to a new base year. The current base year of the index of the volume of mining production is 2010=100. Both actual and seasonally adjusted figures are presented.
	3	Due to mining production figures being available earlier than mineral sales figures, mining production indices are published one month earlier than mineral sales.
	4	The value of mineral sales is calculated, in general, on a free-on-rail/free-on-board basis.
	5	In order to improve timeliness, some information for the current month had to be estimated due to late response. These estimates will be revised in future statistical release(s) as soon as more up-to-date information is available.
Purpose of the survey	6	The monthly mining production and sales survey is conducted by the DMR, covering all mining establishments operating in the South African economy. The results of this survey are used to calculate the volume of mining production indices in order to estimate the gross domestic product (GDP) and its components, which in turn are used to develop and monitor government policy.
Scope of the survey	7	This survey covers mining establishments conducting activities regarding the extracting, dressing and beneficiating of minerals occurring naturally, for example solids such as coal and ores.
Classification	8	The 1993 edition of the <i>Standard Industrial Classification of all Economic Activities</i> (SIC), Fifth Edition, Report No. 09-90-02, was used to classify the statistical units in the survey. The SIC is based on the 1990 <i>International Standard Industrial Classification of all Economic Activities</i> (ISIC) with suitable adaptations for local conditions. Each statistical unit is classified to an industry which reflects the predominant activity of the establishment. Statistics in this publication are presented by mineral group and mineral.
Statistical unit	9	The statistical unit for the collection of information is the mining establishment. An establishment is the smallest economic unit that functions as a separate entity.
Related publications	10	Users may also wish to refer to the following publications which are available from Stats SA – <ul style="list-style-type: none"> • <i>Bulletin of Statistics</i> issued quarterly; and • <i>SA Statistics</i> issued annually.
Rounding-off of figures	11	The figures in the tables have, where necessary, been rounded off to the nearest digit shown. There may, therefore, be slight discrepancies between the sums of the constituent items and the totals shown.
Historical data and past publications	12	Historical mining data and past publications are available on the Stats SA website. Click on the following link (Time series data) or (Past publications) to access the data and releases electronically.

Technical notes

Index of the volume of mining production	1	The index of the volume of mining production, also known as the production index, is a statistical measure of the change in the volume of production. The production index of a mineral group is the ratio between the volume of production of a mineral group in a given period and the volume of production of the same mineral group in the base period. The current base period is 2010. The production in the base period is set at 100.
Index weighting	2	The weight of a mineral group is the ratio of the sales of a mineral group to the total sales of the mining industry. The weight of a mineral group reflects the importance of the mineral group in the total mining industry. The weights change over time due to quality changes and changes in relative prices. New weights need to be calculated from time to time
	3	The weights, which are used to aggregate minerals to mineral groups; and mineral groups to total mining, are based on the value of sales derived from detailed information for 2010 supplied by the Department of Mineral Resources (DMR).
Seasonal adjustment	4	Seasonally adjusted estimates are generated each month using the X-12-ARIMA Seasonal Adjustment Program developed by the US Bureau of the Census, 1968. Seasonal adjustment is a means of removing the estimated effects of normal seasonal variation from the series so that the effects of other influences on the series can be recognised more clearly. Seasonal adjustment does not aim to remove irregular or non-seasonal influences which may be present in any particular month.
	5	Influences that are volatile or unsystematic can still make it difficult to interpret the movement of the series even after adjustment for seasonal variations. This means the month-to-month movements of seasonally adjusted estimates may not be reliable indicators of trend behaviour. The X-12-ARIMA procedure for mining production and sales is described in more detail on the Stats SA website at: http://beta2.statssa.gov.za/publications/P2041/Seasonal_adjustment_X12.pdf
Trend cycle	6	The trend is the long-term pattern or movement of a time series. The X-12-ARIMA Seasonal Adjustment Program is used for smoothing seasonally adjusted estimates to estimate the underlying trend cycle.
Reliability of estimates	7	Figures for the latest 2 calendar years are preliminary.
Month-on-month percentage change	8	The month-on-month percentage change in a variable for any given month is the change between that month and the previous month, expressed as a percentage of the latter.
Year-on-year percentage change	9	The year-on-year percentage change in a variable for any given period is the change between that period and the corresponding period of the previous year, expressed as a percentage of the latter.
Index contribution (percentage points)	10	The contribution (percentage points) of a mineral group or mineral to the percentage change in the total mining production for a given period is calculated by multiplying the difference in the index for each mineral group or mineral by the weight of the mineral group or mineral and then dividing by the previous period's total index.
Sales contribution (percentage points)	11	The contribution (percentage points) to the percentage change in total sales for a given period is calculated by multiplying the percentage change of each mineral group or mineral with its percentage contribution to total mineral sales of the previous period, divided by 100.

Glossary

Free-on-rail	Free-on-rail relates to goods sold on the local market where no railage or road transport costs are involved.																
Free-on-board	Free-on-board relates to goods destined for the export market. Railage, road transport and docking charges are involved but no charges are made for the transport by sea.																
Industry	An industry consists of a group of establishments engaged in the same or similar kinds of economic activity. Industries are defined in the <i>System of National Accounts</i> (SNA) in the same way as in the <i>Standard Industrial Classification (SIC) of all Economic Activities</i> , Fifth Edition of January 1993.																
PGMs – Platinum group metals	Platinum group metals include platinum; iridium; osmiridium; palladium; rhodium; ruthenium and osmium.																
Sales	Sales are the total value of sales of primary minerals at the first point of saleability by the mining establishment.																
Symbols and abbreviations	<table border="0"> <tr> <td>DMR</td> <td>Department of Mineral Resources</td> </tr> <tr> <td>GDP</td> <td>Gross domestic product</td> </tr> <tr> <td>ISIC</td> <td>International Standard Industrial Classification</td> </tr> <tr> <td>PGMs</td> <td>Platinum group metals</td> </tr> <tr> <td>SIC</td> <td>Standard Industrial Classification of all Economic Activities</td> </tr> <tr> <td>SNA</td> <td>System of National Accounts</td> </tr> <tr> <td>Stats SA</td> <td>Statistics South Africa</td> </tr> <tr> <td>*</td> <td>Revised</td> </tr> </table>	DMR	Department of Mineral Resources	GDP	Gross domestic product	ISIC	International Standard Industrial Classification	PGMs	Platinum group metals	SIC	Standard Industrial Classification of all Economic Activities	SNA	System of National Accounts	Stats SA	Statistics South Africa	*	Revised
DMR	Department of Mineral Resources																
GDP	Gross domestic product																
ISIC	International Standard Industrial Classification																
PGMs	Platinum group metals																
SIC	Standard Industrial Classification of all Economic Activities																
SNA	System of National Accounts																
Stats SA	Statistics South Africa																
*	Revised																

Technical enquiries

JP Terblanche	Telephone number: (012) 310 2965 Email: juan-pierret@statssa.gov.za
Martin Kohler	Telephone number: (012) 444 3734 Email: martin.kohler@dmr.gov.za
Gerda Bruwer	Telephone number: (012) 310 8249 Email: gerdab@statssa.gov.za

General information

Stats SA publishes approximately 300 different statistical releases each year. It is not economically viable to produce them in more than one of South Africa's eleven official languages. Since the releases are used extensively, not only locally but also by international economic and social-scientific communities, Stats SA releases are published in English only.

Stats SA has copyright on this publication. Users may apply the information as they wish, provided that they acknowledge Stats SA as the source of the basic data wherever they process, apply, utilise, publish or distribute the data: and also that they specify that the relevant application and analysis (where applicable) result from their own processing of the data.

Advance release calendar

An advance release calendar is disseminated on www.statssa.gov.za

Stats SA products

A complete set of Stats SA publications is available at the Stats SA Library and the following libraries:

National Library of South Africa, Pretoria Division
National Library of South Africa, Cape Town Division
Natal Society Library, Pietermaritzburg
Library of Parliament, Cape Town
Bloemfontein Public Library
Johannesburg Public Library
Eastern Cape Library Services, King William's Town
Central Regional Library, Polokwane
Central Reference Library, Mbombela
Central Reference Collection, Kimberley
Central Reference Library, Mmabatho

Stats SA also provides a subscription service.

Electronic services

A large range of data is available via online services. For more detail about our electronic services, contact Stats SA's user information service at (012) 310 8600.

You can visit us on the Internet at: www.statssa.gov.za

General enquiries

User information services	Telephone number: (012) 310 8600 Email address: info@statssa.gov.za
Orders/subscription services	Telephone number: (012) 310 8358 Email address: magdaj@statssa.gov.za
Postal address	Private Bag X44, Pretoria, 0001

Produced by Stats SA