



**Statistics  
South Africa**

Preferred supplier of quality statistics



# Statistical release

## P2041

# Mining: Production and sales (preliminary)

June 2007

**Embargoed until:  
8 August 2007  
11:00**

**Enquiries:**

User Information Services  
Tel: (012) 310 8600 / 4892 /8390

**Forthcoming issue:**

July 2007

**Expected release date:**

11 September 2007

**Contents**

**SUMMARY OF FINDINGS: MINING PRODUCTION AND MINERAL SALES ..... 3**

**Key findings regarding mining production as at the end of June 2007 ..... 3**

    Mining production increases ..... 3

**Key figures regarding mining production as at the end of June 2007 ..... 3**

    Table A – Selected key figures regarding mining production for June 2007 ..... 3

    Figure 1 – Monthly indices of physical volume of total mining production including gold ..... 4

**Key findings regarding mineral sales as at the end of May 2007 ..... 5**

    Mineral sales increase ..... 5

**Key figures regarding mineral sales as at the end of May 2007 ..... 5**

    Table B – Selected key figures regarding mineral sales for May 2007 ..... 5

    Figure 2 – Total value of mineral sales including gold ..... 6

    Figure 3 – Comparison of the last six years for the total value of mineral sales, including gold, for the three months ended May compared with the three months ended May of the previous year. .... 7

**Detailed results: Tables ..... 8**

    Table 1 – Index of the physical volume of mining production including gold ..... 8

    Table 2 – Index of the physical volume of mining production excluding gold ..... 8

    Table 3 – Indices of physical volume of mining production according to mining divisions, mineral groups and minerals ..... 9

    Table 4 – Contribution of the mining divisions to the total mining production (seasonally adjusted) ..... 9

    Table 5 – Total value of mineral sales including gold (R million) ..... 10

    Table 6 – Total value of mineral sales excluding gold (R million) ..... 10

    Table 7 – Total value of mineral sales according to mining divisions, mineral groups and minerals (R million) ..... 11

    Table 8 – Contribution of the mining divisions to the total value of mineral sales ..... 11

    Table 9 – Percentage change in the indices of mining production between the current month and the corresponding month of the previous year ..... 12

    Table 10 – Percentage change in the indices of mining production between the current quarter and the corresponding quarter of the previous year ..... 12

    Table 11 – Percentage change in the seasonally adjusted indices of mining production between the current month and the previous month ..... 12

    Table 12 – Percentage change in the seasonally adjusted indices of mining production between the current quarter and the previous quarter ..... 12

    Table 13 – Percentage change in the actual value of mineral sales between the current month and the corresponding month of the previous year ..... 13

    Table 14 – Percentage change in the actual value of mineral sales between the current quarter and the corresponding quarter of the previous year ..... 13

    Table 15 – Percentage change in the seasonally adjusted value of mineral sales between the current month and the previous month ..... 13

    Table 16 – Percentage change in the seasonally adjusted value of mineral sales between the current quarter and the previous quarter ..... 13

**Explanatory notes..... 14**

**Glossary..... 16**

**General information..... 17**

## SUMMARY OF FINDINGS: MINING PRODUCTION AND MINERAL SALES

### Key findings regarding mining production as at the end of June 2007

#### Mining production increases

The total mining production for the second quarter of 2007 increased by 0,2% compared with the second quarter of 2006. However, the actual total mining production for June 2007 decreased by 1,0% compared with June 2006. (see Table A).

The total mining production for the second quarter of 2007, after seasonal adjustment, decreased by 1,4% compared with the previous three months. This decrease of 1,4% was due to a decrease of 1,6% in the production of non-gold minerals. The major contributor to the seasonally adjusted decrease of 1,6% in the total production of non-gold minerals during the second quarter of 2007 compared with the previous three months was the decrease in the production of coal (1,4 percentage points) (see Table 4).

Gold production decreased by 3,1% for the period June 2007 compared with June 2006. Furthermore, gold production after seasonal adjustment decreased by 0,3% for June 2007 when compared to May 2007 (see Table A).

### Key figures regarding mining production as at the end of June 2007

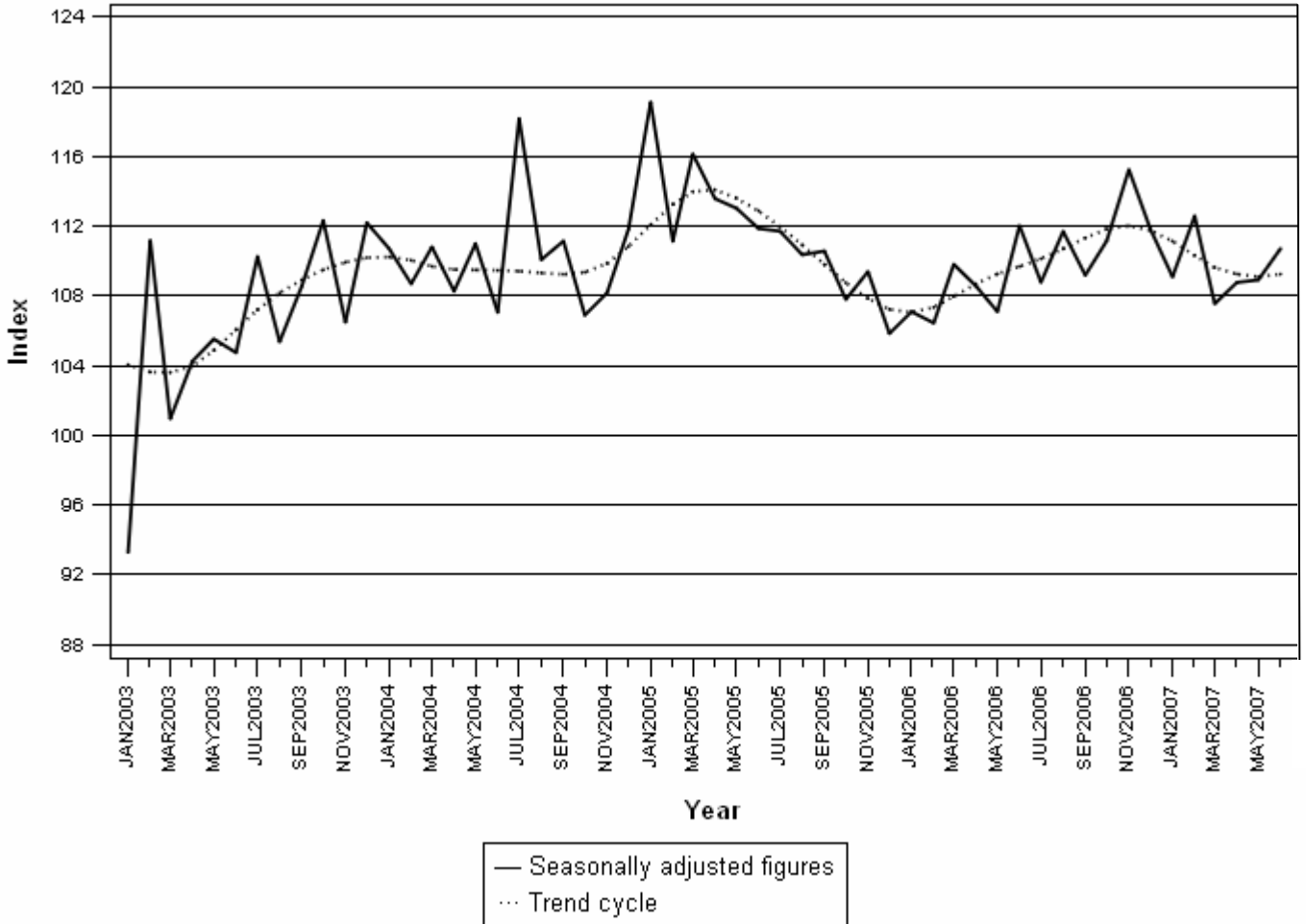
Table A – Selected key figures regarding mining production for June 2007

Annual estimates	Base : 2000=100		
	June 2007	% Change between June 2006 and June 2007	% Change between April 2006 to June 2006 and April 2007 to June 2007
<b>Index of the physical volume of mining production</b>			
<b>Gold</b>	63,2	-3,1%	-3,4%
<b>Non-gold</b>	134,9	-0,6%	0,8%
<b>Total</b>	116,4	-1,0%	0,2%

Shorter term seasonally adjusted estimates	Base : 2000=100		
	June 2007	% Change between May 2007 and June 2007	% Change between January 2007 to March 2007 and April 2007 to June 2007
<b>Index of the physical volume of mining production</b>			
<b>Gold</b>	61,2	-0,3%	0,1%
<b>Non-gold</b>	126,6	1,7%	-1,6%
<b>Total</b>	109,8	1,4%	-1,4%

Figure 1 shows the seasonally adjusted figures and trend series for the index of mining production between January 2003 and June 2007. The trend series rose from the beginning of 2003 until January 2004, but levelled off until October of the same year. The trend reached a peak in April 2005 and a trough in January 2006. From February 2006 the trend increased until November 2006 but started to decline thereafter.

**Figure 1 – Monthly indices of physical volume of total mining production including gold**



## Key findings regarding mineral sales as at the end of May 2007

### Mineral sales increase

The total seasonally adjusted value of mineral sales at current prices for the three months ended May 2007 reflected an increase of 8,2% compared with the previous three months. This increase of 8,2% can be attributed to increases of 9,2% (R888,7 million) in the sales of gold and 8,0% (R3 581,6 million) in the sales of non-gold minerals (see Table B and Table 16).

Furthermore, the actual total value of mineral sales at current prices for the three months ended May 2007 increased by 37,3% compared with the three months ended May 2006. The increase of 37,3% is higher than the increase of 18,8% for the same period a year ago (see Table B and Figure 3).

The major contributors to the increase of 37,3% year on year in the actual value of mineral sales at current prices for the three months ended May 2007 were PGMs (+17,3 percentage points or +R7 132,0 million), gold (+6,2 percentage points or +R2 574,4 million), coal (+4,6 percentage points or +R1 912,3 million) and iron ore (+2,1 percentage points or +R882,0 million) (see Table 8).

Total sales reached R19,7 billion for the month of May 2007 and it is the fourth consecutive month that sales were above the R18 billion mark.

## Key figures regarding mineral sales as at the end of May 2007

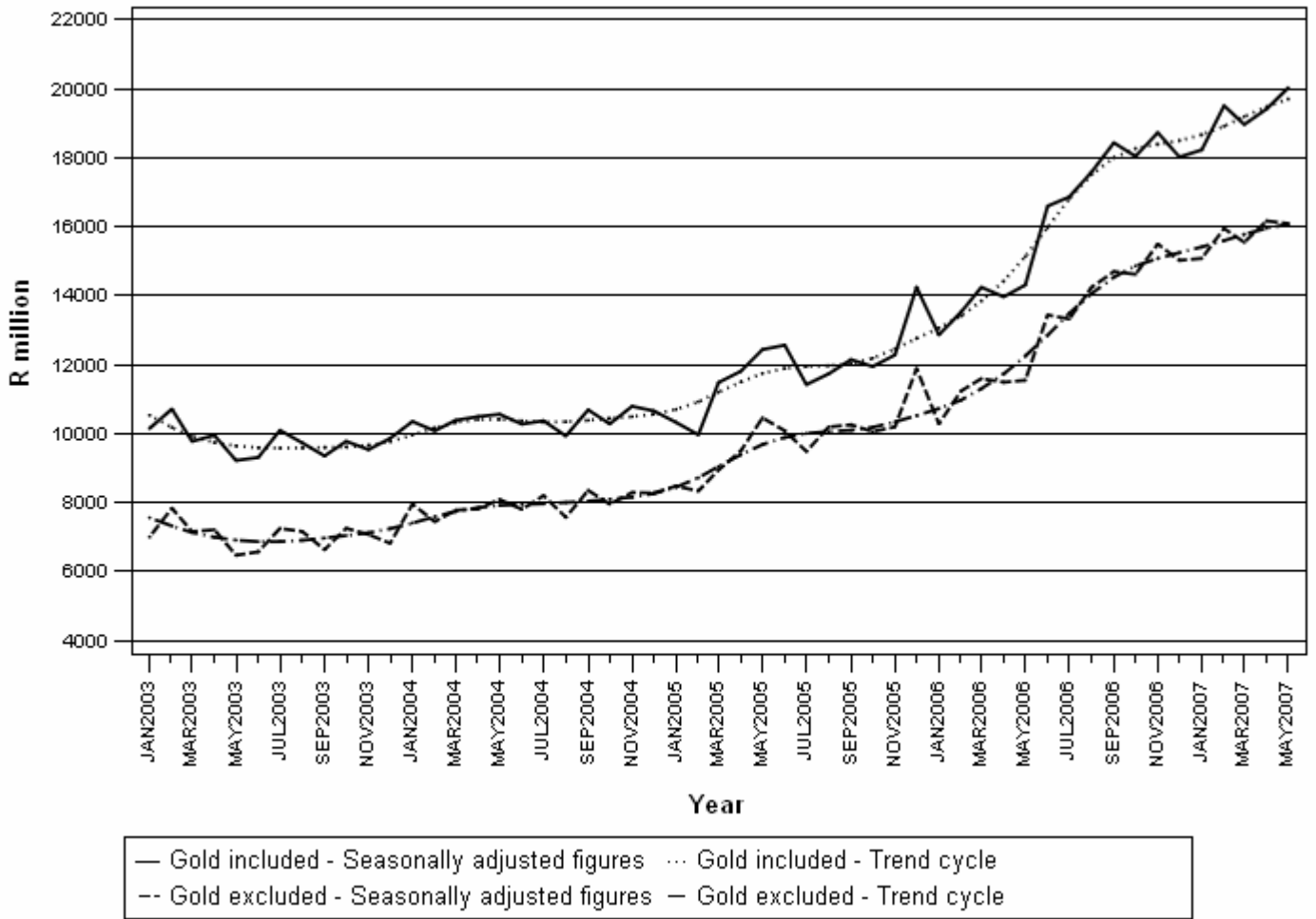
Table B – Selected key figures regarding mineral sales for May 2007

Annual estimates	May 2007	% Change between May 2006 and May 2007	% Change between March 2006 to May 2006 and March 2007 to May 2007
	R million		
<b>Mineral sales</b>			
<b>Gold</b>	3 693,5	42,0%	34,0%
<b>Non-gold</b>	16 003,2	39,8%	38,1%
<b>Total</b>	19 696,6	40,2%	37,3%

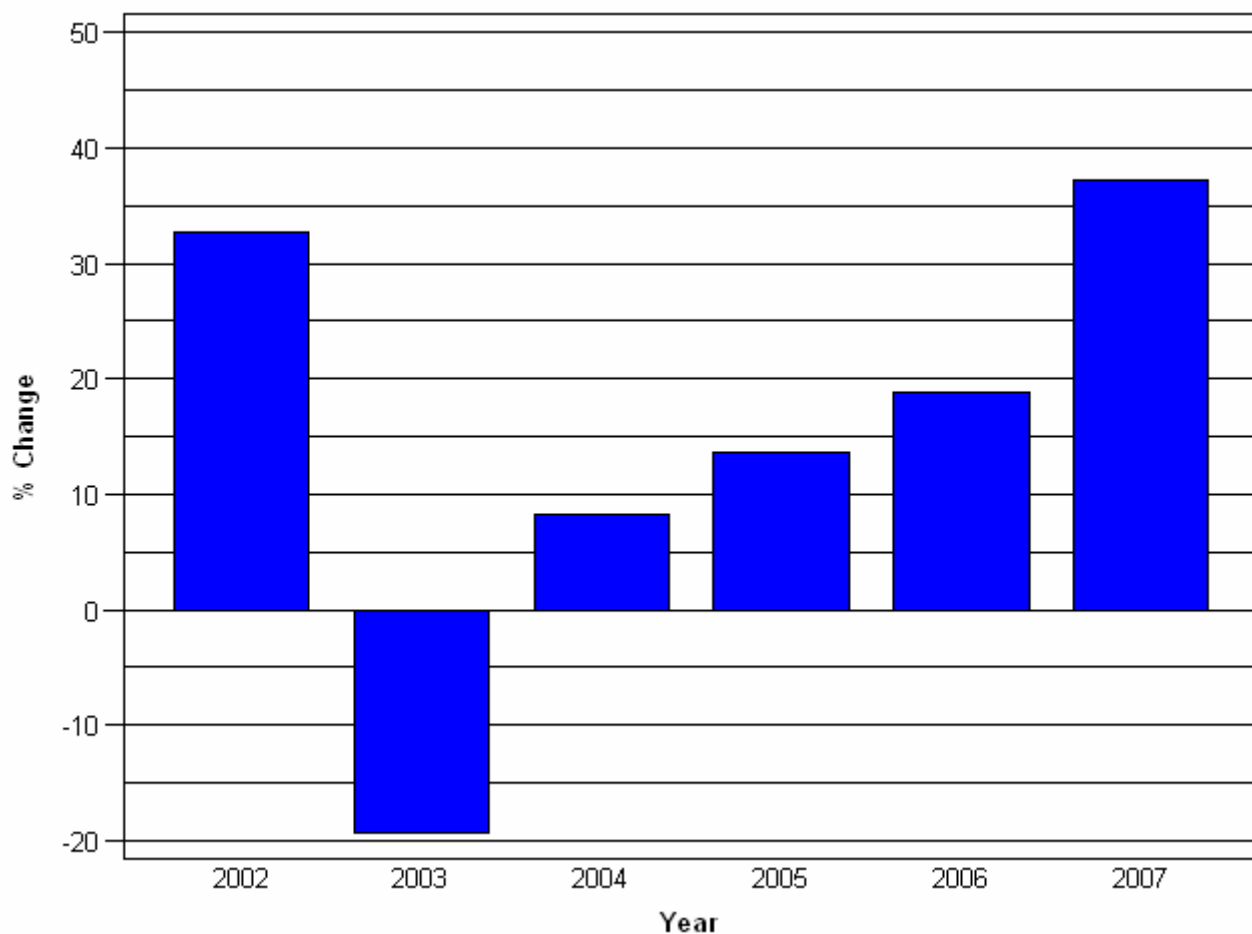
Shorter term seasonally adjusted estimates	May 2007	% Change between April 2007 and May 2007	% Change between December 2006 to February 2007 and March 2007 to May 2007
	R million		
<b>Mineral sales</b>			
<b>Gold</b>	3 934,2	21,2%	9,2%
<b>Non-gold</b>	16 250,0	-0,9%	8,0%
<b>Total</b>	20 184,2	2,7%	8,2%

Figure 2 shows the seasonally adjusted figures and trend series of the total value of mineral sales between January 2003 and May 2007. From January 2003 the trend decreased until July 2003. The trend series rose moderately from August 2003 until February 2005. Since March 2005 the trend cycle has been increasing until present.

**Figure 2 – Total value of mineral sales including gold**



**Figure 3 – Comparison of the last six years for the total value of mineral sales, including gold, for the three months ended May compared with the three months ended May of the previous year.**



The mineral sales growth rate of 37,3% for the three months ended May 2007 surpassed the 18,8% growth rate for the three months ended May 2006. Figure 3 shows that there was only one negative growth rate in the value of mineral sales and that was for the three months ended May 2003. From 2004 all the three months that ended on May showed positive growth rates.

**P J Lehohla**  
**Statistician-General**



**Detailed results: Tables**

**Table 1 – Index of the physical volume of mining production including gold**

		Base : 2000=100						
		2001	2002	2003	2004	2005	2006	1/ 2007
Actual indices	January	95,0	89,0	85,1	100,7	107,9	96,9	98,5
	February	96,8	94,2	101,7	97,8	98,6	93,6	98,7
	March	102,3	99,1	101,8	112,9	119,9	114,3	112,7
	April	98,9	102,0	101,0	105,0	110,2	105,2	105,5
	May	103,6	102,9	107,1	113,0	115,2	109,0	110,6
	June	108,4	104,1	108,6	111,1	116,8	117,6	116,4
	July	93,5	99,0	110,7	119,5	113,1	110,2	
	August	115,2	107,2	109,1	114,3	114,8	116,3	
	September	98,4	108,1	114,6	117,4	116,7	115,2	
	October	105,1	106,7	114,5	108,2	108,2	111,0	
	November	102,6	107,5	108,6	110,1	111,4	117,3	
	December	97,2	107,0	113,5	113,3	107,4	113,2	
	Year	<b>101,4</b>	<b>102,2</b>	<b>106,4</b>	<b>110,3</b>	<b>111,7</b>	<b>110,0</b>	
Seasonally adjusted indices	January	104,7	97,4	92,8	109,9	118,2	106,1	107,6
	February	102,3	101,2	112,3	109,2	110,8	105,6	112,7
	March	102,5	99,5	102,2	113,0	119,1	113,1	111,4
	April	102,7	106,0	104,6	108,7	113,9	108,8	109,0
	May	103,2	102,0	105,7	110,9	113,1	106,9	108,3
	June	103,5	99,7	103,8	106,1	111,0	111,4	109,8
	July	93,0	97,7	108,8	116,9	110,3	107,5	
	August	112,3	103,8	105,2	109,9	109,9	111,1	
	September	96,4	105,0	110,0	111,8	110,7	109,4	
	October	101,2	103,3	111,9	106,3	107,4	110,6	
	November	99,6	105,2	107,0	109,1	110,8	117,5	
	December	95,1	104,8	111,0	111,3	105,4	110,4	

**Table 2 – Index of the physical volume of mining production excluding gold**

		Base : 2000=100						
		2001	2002	2003	2004	2005	2006	1/ 2007
Actual indices	January	98,3	89,6	85,7	110,0	121,6	110,1	113,4
	February	98,6	95,8	107,3	104,0	108,7	104,1	111,2
	March	104,4	101,0	106,2	123,6	136,2	130,9	131,2
	April	102,2	105,3	106,3	115,0	127,0	119,7	121,8
	May	108,9	107,0	114,7	124,9	131,3	126,1	128,0
	June	112,5	107,3	116,4	121,1	132,3	135,7	134,9
	July	93,7	102,4	118,8	133,1	129,2	127,1	
	August	124,5	111,2	116,3	125,5	132,2	134,0	
	September	99,7	111,4	122,9	130,0	132,4	131,7	
	October	110,2	111,9	124,2	119,7	122,3	127,8	
	November	106,8	113,3	116,2	121,3	126,2	136,1	
	December	97,7	111,2	123,3	127,0	120,0	132,1	
	Year	<b>104,8</b>	<b>105,6</b>	<b>113,2</b>	<b>121,3</b>	<b>126,6</b>	<b>126,3</b>	
Seasonally adjusted indices	January	108,3	97,9	93,2	120,1	133,2	120,6	123,7
	February	105,0	104,2	120,6	118,5	124,3	119,3	129,3
	March	105,4	102,1	107,2	124,1	135,5	129,7	129,9
	April	106,3	109,6	110,1	119,0	131,1	123,5	125,7
	May	107,3	104,9	112,0	121,4	128,0	122,9	124,5
	June	107,0	102,4	110,9	115,3	125,4	128,1	126,6
	July	92,1	100,1	115,9	129,4	125,2	123,2	
	August	121,7	107,8	112,1	120,5	126,4	127,9	
	September	98,8	109,0	118,5	124,1	125,8	125,2	
	October	105,0	107,5	120,7	117,2	121,4	127,3	
	November	103,2	110,8	114,6	120,6	126,1	137,0	
	December	96,0	109,2	120,6	124,7	117,7	128,5	

1/ Preliminary.

**Table 3 – Indices of physical volume of mining production according to mining divisions, mineral groups and minerals**

	Base : 2000=100							
	Weights	Actual indices				Seasonally adjusted indices		
		2006	2007		2006	2007		2006
			1/ Jun	May *		Jun	Jun	
<b>Total, gold included</b>	100,0	110,0	116,4	110,6	117,6	109,8	108,3	111,4
<b>Total, gold excluded</b>	74,3	126,3	134,9	128,0	135,7	126,6	124,5	128,1
<b>Gold</b>	25,7	62,9	63,2	60,4	65,2	61,2	61,4	63,2
<b>Iron ore</b>	3,1	122,1	139,6	118,0	124,0	130,8	115,8	116,1
<b>Chromium</b>	1,1	111,4	163,6	157,2	106,8	158,4	151,9	103,2
<b>Copper</b>	1,6	80,8	87,2	86,4	102,8	82,7	81,4	97,4
<b>Manganese ore</b>	1,3	143,0	201,6	158,0	147,2	184,1	152,6	133,9
<b>PGMs</b>	27,6	148,7	168,0	154,0	162,0	151,8	146,8	146,8
<b>Nickel</b>	2,0	114,0	96,0	99,2	140,8	95,6	96,8	139,0
<b>Other metallic minerals</b>	2,9	92,2	86,4	82,8	95,6	85,5	81,0	94,7
<b>Diamonds</b>	8,3	137,6	136,4	113,6	153,6	131,6	127,5	148,7
<b>Coal</b>	20,0	108,6	108,0	116,0	112,4	105,7	109,8	110,0
<b>Building materials</b>	2,6	128,4	139,6	143,2	132,4	132,9	134,8	126,5
<b>Other non-metallic minerals</b>	3,8	84,7	71,6	80,0	89,2	73,5	82,9	91,6

1/ Preliminary.

\* Revised.

**Table 4 – Contribution of the mining divisions to the total mining production (seasonally adjusted)**

		Base : 2000=100			
		Percentage contribution to the total mining production using the weights according to the value of production in the base year	Average seasonally adjusted production index for April 2007 to June 2007	Quarterly percentage change April 2007 to June 2007 compared with the preceding three months	Contribution (percentage points) to the percentage change in the total mining production 1/
<b>Gold</b>		25,7	61,2	0,1	0,0
<b>Non-gold minerals</b>	<b>Iron ore</b>	3,1	122,4	-1,9	-0,1
	<b>Copper</b>	1,6	85,3	0,2	0,0
	<b>Manganese ore</b>	1,3	165,3	5,5	0,1
	<b>Chromium</b>	1,1	151,1	5,2	0,1
	<b>PGMs</b>	27,6	147,5	0,7	0,3
	<b>Nickel</b>	2,0	99,0	-5,7	-0,1
	<b>Other metallic minerals</b>	2,9	82,9	2,4	0,1
	<b>Diamonds</b>	8,3	135,0	-0,5	-0,1
	<b>Coal</b>	20,0	108,0	-6,7	-1,4
	<b>Building materials</b>	2,6	133,0	-2,0	-0,1
	<b>Other non-metallic minerals</b>	3,8	79,7	-4,9	-0,1
<b>Total non-gold minerals</b>		74,3	125,6	-1,6	-1,4
<b>Total minerals</b>		100,0	109,0	-1,4	-1,4

1/ The quarterly contribution of a commodity or commodity group to the total seasonally adjusted mining production is calculated by multiplying the weight of the commodity or commodity group with the change in the index for the commodity or commodity group and dividing by the previous period index total. Figures have been rounded off.

**Table 5 – Total value of mineral sales including gold (R million)**

		2001	2002	2003	2004	2005	* 2006	1/ 2007
<b>Actual values</b>	<b>January</b>	9 241,5	11 387,0	9 868,8	9 820,5	9 587,4	11 755,1	16 557,8
	<b>February</b>	9 711,7	10 634,4	10 236,5	9 576,1	9 383,8	12 680,8	18 189,3
	<b>March</b>	8 134,9	11 639,2	9 829,3	10 396,0	11 477,1	14 179,9	18 868,4
	<b>April</b>	8 554,2	11 194,9	9 294,1	9 789,3	11 034,0	13 042,6	18 104,3
	<b>May</b>	9 675,9	12 145,3	9 104,1	10 373,3	12 239,8	14 046,8	19 696,6
	<b>June</b>	10 640,7	11 637,2	9 745,9	10 856,0	13 360,1	17 809,8	
	<b>July</b>	10 146,3	10 779,9	10 403,7	10 844,2	12 001,8	17 707,5	
	<b>August</b>	9 586,4	11 633,5	9 612,0	9 841,7	11 687,6	17 466,8	
	<b>September</b>	8 711,5	12 115,1	10 008,1	11 693,2	13 524,1	20 728,7	
	<b>October</b>	9 999,6	12 514,2	9 989,4	10 466,3	12 074,8	18 098,0	
	<b>November</b>	9 627,7	11 059,4	9 535,8	10 815,6	12 453,2	19 040,3	
	<b>December</b>	11 327,7	10 764,4	9 899,2	10 585,6	13 994,2	17 709,7	
	<b>Year</b>	<b>115 358,1</b>	<b>137 504,5</b>	<b>117 526,9</b>	<b>125 057,8</b>	<b>142 817,9</b>	<b>194 266,0</b>	
<b>Seasonally adjusted values</b>	<b>January</b>	9 151,0	11 413,0	9 918,4	10 122,0	10 230,6	12 487,3	17 848,6
	<b>February</b>	9 850,0	10 870,9	10 518,2	9 985,4	9 947,8	13 630,9	19 586,4
	<b>March</b>	8 134,4	11 706,2	9 964,8	10 555,1	11 544,1	14 328,1	19 248,1
	<b>April</b>	8 964,9	11 896,6	9 873,1	10 469,1	11 796,7	14 082,4	19 645,0
	<b>May</b>	9 715,6	12 145,0	9 131,4	10 487,7	12 349,6	14 314,1	20 184,2
	<b>June</b>	10 316,1	11 174,6	9 313,1	10 336,5	12 645,8	16 681,7	
	<b>July</b>	10 255,7	10 721,5	10 487,7	10 834,1	11 785,2	16 945,4	
	<b>August</b>	9 601,1	11 713,2	9 703,7	9 884,9	11 731,8	17 614,9	
	<b>September</b>	8 569,9	11 818,4	9 443,4	10 782,1	12 281,4	18 569,8	
	<b>October</b>	9 894,5	12 273,5	9 840,8	10 295,6	11 953,7	18 223,4	
	<b>November</b>	9 747,1	11 248,4	9 643,4	10 817,2	12 318,8	19 127,9	
	<b>December</b>	10 861,9	10 368,5	9 639,8	10 292,6	13 541,5	17 172,0	

**Table 6 – Total value of mineral sales excluding gold (R million)**

		2001	2002	2003	2004	2005	* 2006	1/ 2007
<b>Actual values</b>	<b>January</b>	7 181,9	8 002,3	6 744,1	7 480,6	7 809,6	9 316,0	13 599,3
	<b>February</b>	7 720,8	7 368,2	7 452,6	7 039,8	7 813,9	10 469,6	14 758,9
	<b>March</b>	5 912,0	8 110,9	7 140,7	7 710,4	8 840,3	11 403,2	15 268,7
	<b>April</b>	6 748,0	7 481,9	6 815,2	7 366,5	8 963,2	10 850,3	15 252,3
	<b>May</b>	7 139,7	8 619,3	6 477,2	8 029,3	10 372,9	11 445,0	16 003,2
	<b>June</b>	8 245,9	8 035,5	6 759,5	8 107,4	10 562,0	14 217,3	
	<b>July</b>	7 779,6	7 344,7	7 613,1	8 699,0	10 082,3	14 206,8	
	<b>August</b>	6 942,5	8 065,2	7 052,7	7 546,9	10 210,5	14 280,0	
	<b>September</b>	6 219,3	8 562,1	7 092,3	9 114,1	11 390,1	16 475,5	
	<b>October</b>	6 971,4	8 711,8	7 345,5	8 089,0	10 186,0	14 713,2	
	<b>November</b>	6 953,1	7 981,8	7 154,9	8 406,4	10 436,1	15 903,9	
	<b>December</b>	8 532,3	7 834,8	6 825,9	8 138,7	11 549,8	14 580,8	
	<b>Year</b>	<b>86 346,5</b>	<b>96 118,5</b>	<b>84 473,7</b>	<b>95 728,1</b>	<b>118 216,7</b>	<b>157 861,6</b>	
<b>Seasonally adjusted values</b>	<b>January</b>	7 107,8	8 031,9	6 770,1	7 726,6	8 382,2	9 908,9	14 702,4
	<b>February</b>	7 796,6	7 508,1	7 640,8	7 352,0	8 317,9	11 339,6	16 025,0
	<b>March</b>	5 972,7	8 269,7	7 349,0	7 946,2	9 007,1	11 677,9	15 832,6
	<b>April</b>	6 936,9	7 752,7	7 132,0	7 792,3	9 485,7	11 604,1	16 399,5
	<b>May</b>	7 078,3	8 485,4	6 381,9	8 015,0	10 368,7	11 550,4	16 250,0
	<b>June</b>	8 030,8	7 813,3	6 575,6	7 863,0	10 162,6	13 523,3	
	<b>July</b>	7 872,7	7 219,1	7 640,4	8 662,7	9 846,1	13 405,2	
	<b>August</b>	7 033,6	8 196,9	7 133,3	7 526,2	10 189,3	14 269,9	
	<b>September</b>	6 145,5	8 415,1	6 724,0	8 446,8	10 392,4	14 833,9	
	<b>October</b>	7 084,8	8 705,2	7 317,1	7 967,2	10 066,4	14 802,9	
	<b>November</b>	7 001,4	8 074,3	7 181,5	8 316,1	10 232,3	15 894,3	
	<b>December</b>	8 036,5	7 432,4	6 595,1	7 909,2	11 182,2	14 173,1	

1/ Preliminary.  
\* Revised.

**Table 7 – Total value of mineral sales according to mining divisions, mineral groups and minerals (R million)**

	Actual values				Seasonally adjusted values		
	2006	2007		2006	2007		2006
		1/ May	April *	May	May	April	May
<b>Total, gold included</b>	194 266,0	19 696,6	18 104,3	14 046,8	20 184,2	19 645,0	14 314,1
<b>Total, gold excluded</b>	157 861,6	16 003,2	15 252,3	11 445,0	16 250,0	16 399,5	11 550,4
<b>Gold</b>	36 404,5	3 693,5	2 852,0	2 601,8	3 934,2	3 245,5	2 763,7
<b>Iron ore</b>	9 931,3	988,2	867,1	639,3	1 055,5	963,2	675,0
<b>Chromium</b>	2 309,9	235,4	228,2	196,5	214,7	221,3	179,3
<b>Copper</b>	4 956,1	596,5	427,9	369,8	545,1	475,3	341,1
<b>Manganese ore</b>	2 245,9	259,9	234,5	121,5	252,3	218,0	119,0
<b>PGMs</b>	65 443,8	6 799,8	6 896,7	4 379,2	7 326,9	7 712,5	4 715,2
<b>Nickel</b>	7 779,9	1 280,7	971,0	497,1	1 226,9	997,4	485,0
<b>Other metallic minerals</b>	5 199,6	511,6	381,5	366,2	470,8	384,6	335,4
<b>Coal</b>	37 835,8	3 163,0	3 616,8	2 842,0	3 262,3	3 674,3	2 914,9
<b>Building materials</b>	5 082,3	523,0	458,4	436,8	496,2	482,0	412,3
- Granite or norite	395,7	55,3	34,6	28,2	58,9	42,5	29,9
- Lime and limestone	1 505,4	139,0	131,7	123,4	135,7	135,2	120,4
- Other building materials	3 181,1	328,7	292,1	285,2	301,6	304,3	262,0
<b>Other non-metallic minerals</b>	17 077,1	1 645,1	1 170,1	1 596,6	1 399,3	1 270,9	1 373,2

1/ Preliminary.

\* Revised.

**Table 8 – Contribution of the mining divisions to the total value of mineral sales**

		Percentage contribution to total mineral sales during March 2006 to May 2006	Percentage change between March 2006 to May 2006 and March 2007 to May 2007	Contribution (percentage points) to the percentage change in the total value of mineral sales 1/	Difference in sales of mining divisions between March 2006 to May 2006 and March 2007 to May 2007
					R million
<b>Gold</b>		18,3	34,0	6,2	2 574,4
<b>Non-gold minerals</b>	<b>Iron ore</b>	5,3	40,4	2,1	882,0
	<b>Copper</b>	2,3	50,1	1,2	469,9
	<b>Manganese ore</b>	1,4	30,8	0,4	172,9
	<b>Chromium</b>	1,3	34,7	0,5	181,7
	<b>PGMs</b>	31,4	55,1	17,3	7 132,0
	<b>Nickel</b>	3,0	168,9	5,1	2 072,4
	<b>Other metallic minerals</b>	2,6	21,3	0,6	228,5
	<b>Coal</b>	20,1	23,1	4,6	1 912,3
	<b>Building materials</b>	3,0	21,0	0,6	257,3
	<b>Other non-metallic minerals</b>	11,5	-10,2	-1,2	-483,2
<b>Total non-gold minerals</b>		81,7	38,1	31,1	12 825,7
<b>Total minerals</b>		100,0	37,3	37,3	15 400,0

1/ The contribution to the percentage change in sales is calculated by multiplying the quarterly percentage change of each mineral with the percentage contribution to total mineral sales during March 2006 to May 2006, divided by 100.

**Table 9 – Percentage change in the indices of mining production between the current month and the corresponding month of the previous year**

	Base : 2000=100			
	Actual estimates June 2006	Actual estimates June 2007	% Change between June 2006 and June 2007	Difference between June 2006 and June 2007
	Percentage points			
<b>Gold</b>	65,2	63,2	-3,1%	-2,0
<b>Non-gold minerals</b>	135,7	134,9	-0,6%	-0,8
<b>Total</b>	117,6	116,4	-1,0%	-1,2

**Table 10 – Percentage change in the indices of mining production between the current quarter and the corresponding quarter of the previous year**

	Base : 2000=100			
	Actual estimates April 2006 to June 2006	Actual estimates April 2007 to June 2007	% Change between April 2006 to June 2006 and April 2007 to June 2007	Difference between April 2006 to June 2006 and April 2007 to June 2007
	Percentage points			
<b>Gold</b>	188,4	182,0	-3,4%	-6,4
<b>Non-gold minerals</b>	381,5	384,7	0,8%	3,2
<b>Total</b>	331,8	332,5	0,2%	0,7

**Table 11 – Percentage change in the seasonally adjusted indices of mining production between the current month and the previous month**

	Base : 2000=100			
	Actual estimates May 2007	Actual estimates June 2007	% Change between May 2007 and June 2007	Difference between May 2007 and June 2007
	Percentage points			
<b>Gold</b>	61,4	61,2	-0,3%	-0,2
<b>Non-gold minerals</b>	124,5	126,6	1,7%	2,1
<b>Total</b>	108,3	109,8	1,4%	1,5

**Table 12 – Percentage change in the seasonally adjusted indices of mining production between the current quarter and the previous quarter**

	Base : 2000=100			
	Actual estimates January 2007 to March 2007	Actual estimates April 2007 to June 2007	% Change between January 2007 to March 2007 and April 2007 to June 2007	Difference between January 2007 to March 2007 and April 2007 to June 2007
	Percentage points			
<b>Gold</b>	183,4	183,5	0,1%	0,1
<b>Non-gold minerals</b>	382,9	376,8	-1,6%	-6,1
<b>Total</b>	331,7	327,1	-1,4%	-4,6

**Table 13 – Percentage change in the actual value of mineral sales between the current month and the corresponding month of the previous year**

	Actual estimates May 2006	Actual estimates May 2007	% Change between May 2006 and May 2007	Difference between May 2006 and May 2007
	R million	R million		R million
<b>Gold</b>	2 601,8	3 693,5	42,0%	1 091,7
<b>Non-gold minerals</b>	11 445,0	16 003,2	39,8%	4 558,2
<b>Total</b>	14 046,8	19 696,6	40,2%	5 649,8

**Table 14 – Percentage change in the actual value of mineral sales between the current quarter and the corresponding quarter of the previous year**

	Actual estimates March 2006 to May 2006	Actual estimates March 2007 to May 2007	% Change between March 2006 to May 2006 and March 2007 to May 2007	Difference between March 2006 to May 2006 and March 2007 to May 2007
	R million	R million		R million
<b>Gold</b>	7 570,8	10 145,2	34,0%	2 574,4
<b>Non-gold minerals</b>	33 698,5	46 524,2	38,1%	12 825,7
<b>Total</b>	41 269,3	56 669,3	37,3%	15 400,0

**Table 15 – Percentage change in the seasonally adjusted value of mineral sales between the current month and the previous month**

	Actual seasonal adjusted estimates April 2007	Actual seasonal adjusted estimates May 2007	% Change between April 2007 and May 2007	Difference between April 2007 and May 2007
	R million	R million		R million
<b>Gold</b>	3 245,5	3 934,2	21,2%	688,7
<b>Non-gold minerals</b>	16 399,5	16 250,0	-0,9%	-149,5
<b>Total</b>	19 645,0	20 184,2	2,7%	539,2

**Table 16 – Percentage change in the seasonally adjusted value of mineral sales between the current quarter and the previous quarter**

	Actual estimates December 2006 to February 2007	Actual estimates March 2007 to May 2007	% Change between December 2006 to February 2007 and March 2007 to May 2007	Difference between December 2006 to February 2007 and March 2007 to May 2007
	R million	R million		R million
<b>Gold</b>	9 706,5	10 595,2	9,2%	888,7
<b>Non-gold minerals</b>	44 900,5	48 482,1	8,0%	3 581,6
<b>Total</b>	54 607,0	59 077,3	8,2%	4 470,3

## Explanatory notes

<b>Introduction</b>	<b>1</b>	Statistics South Africa (Stats SA) publishes monthly information regarding the mining industry on the basis of mining production figures and mineral sales furnished by the Minerals Bureau, Department of Minerals and Energy. This statistical release contains detailed information regarding indices of the physical volume of mining production and the total value of mineral sales according to mining divisions and mineral groups on a monthly basis.
	<b>2</b>	In accordance with international practice, the indices have to be re-based every five years to a new base year. The base year of the index of the physical volume of mining production is currently 2000=100. Both actual and seasonally adjusted figures are presented.
	<b>3</b>	Due to mining production figures being available earlier than mineral sales figures, mining production indices are published one month earlier than mineral sales.
	<b>4</b>	The value of mineral sales is calculated, in general, on a free-on-rail/free-on-board basis.
	<b>5</b>	In order to improve timeliness, some information for the current month may have been estimated due to late response. These estimates will be revised in future statistical release(s) as soon as more up-to-date information is available.
<b>Purpose of the survey</b>	<b>6</b>	The monthly mining production and sales survey is a survey conducted by the Minerals Bureau, covering all mining establishments operating in the South African economy. The results of this survey are used to calculate physical volume of mining production indices in order to estimate the gross domestic product (GDP) and its components, which in turn are used to develop and monitor Government policy.
<b>Scope of the survey</b>	<b>7</b>	This survey covers mining establishments conducting activities regarding <ul style="list-style-type: none"> <li>• The extracting, dressing and beneficiating of minerals occurring naturally, for example solids such as coal and ores.</li> </ul>
<b>Classification</b>	<b>8</b>	The 1993 edition of the <i>Standard Industrial Classification of all Economic Activities (SIC)</i> , Fifth Edition, Report No. 09-90-02, was used to classify the statistical units in the survey. The SIC is based on the 1990 <i>International Standard Industrial Classification of all Economic Activities (ISIC)</i> with suitable adaptations for local conditions. Statistics in this publication are presented at SIC division, major group and subgroup level. Each statistical unit is classified to an industry which reflects the predominant activity of the establishment.
<b>Statistical unit</b>	<b>9</b>	The basic statistical unit for the collection of information is the mining establishment. An establishment is the smallest economic unit that functions as a separate entity. Each statistical unit is classified to an industry (see paragraph 8).
<b>Weighting</b>	<b>10</b>	The weights which are used to aggregate minerals to mineral groups and mineral groups to total mining are based on the value of production derived from detailed information for 2000 supplied by the Minerals Bureau, Department of Minerals and Energy.

<b>Seasonal adjustment</b>	<b>11</b>	<p>Seasonally adjusted estimates of all items are generated each month, using the X-11 Seasonal Adjustment Program developed by US Bureau of the Census Economic Research and Analyses Division, 1968. Seasonal adjustment is a means of removing the estimated effects of normal seasonal variation from the series so that the effects of other influences on the series can be more clearly recognised. Seasonal adjustment does not aim to remove irregular or non-seasonal influences which may be present in any particular month.</p> <p>Influences that are volatile or unsystematic can still make it difficult to interpret the movement of the series even after adjustment for seasonal variations. This means the month-to-month movements of seasonally adjusted estimates may not be reliable indicators of trend behaviour.</p>
<b>Reliability of estimates</b>	<b>12</b>	<p>Estimates are subject to sampling and non-sampling errors. Figures for the latest month are preliminary.</p>
<b>Historical data</b>	<b>13</b>	<p>More comprehensive detail on the method of calculation and historical data in respect of the production indices according to mining mineral groups for the period February 1990 to November 2002 is available in statistical release P2041.1, entitled <i>Mining statistics: Indices of the physical volume of mining production, Base: 2000=100, February 1990 to November 2002</i>, published on 11 February 2003 on the Stats SA website: <a href="http://www.statssa.gov.za">www.statssa.gov.za</a></p>
<b>Related publications</b>	<b>14</b>	<p>Users may also wish to refer to the following publications which are available from Stats SA -</p> <ul style="list-style-type: none"> <li>• <i>Bulletin of Statistics.</i></li> <li>• <i>SA Statistics.</i></li> </ul>
<b>Unpublished statistics</b>	<b>15</b>	<p>In some cases Stats SA can also make available statistics not included in standard publications. The statistics can be made available via computer printouts or diskette or CD. Generally, a charge is made for providing unpublished statistics.</p>
<b>Rounding-off of figures</b>	<b>16</b>	<p>The figures in the tables have, where necessary, been rounded off to the nearest digit shown. There may, therefore, be slight discrepancies between the sums of the constituent items and the totals shown.</p>



---

## Glossary

<b>Free-on-rail</b>	Free-on-rail relates to goods sold on the local market where no railage or road transport costs are involved.
<b>Free-on-board basis</b>	Free-on-board relates to goods destined for the export market. Railage, road transport and docking charges are involved but no charges are made for the transport by sea.
<b>Index of physical volume of mining production</b>	The index of physical volume of mining production or a production index is a statistical measure of the change in the volume of production. The production index of a mineral group is the ratio between the volume of production of a mineral group in a given period and the volume of production of the same mineral group in the base period. The current base period is 2000. The production in the base period is set at 100.
<b>Industry</b>	An industry consists of a group of establishments engaged in the same or similar kinds of economic activity. Industries are defined in the <i>System of National Accounts (SNA)</i> in the same way as in the <i>Standard Industrial Classification (SIC) of all Economic Activities</i> , Fifth Edition of January 1993.
<b>PGMs - Platinum Group Metals</b>	Platinum Group Metals include platinum; iridium; osmiridium; palladium; rhodium; ruthenium and osmium.
<b>Sales</b>	Sales are the total value of sales and transfers-out of goods mined by the mining establishments and the amounts received for installation, erection or assembly or other services rendered.
<b>Weight</b>	The weight of a mineral group is the ratio of the sales of a mineral group to the total sales of the mining industry. The weight of a mineral group reflects the importance of the mineral group in the total mining industry. The weights change over time due to quality changes and changes in relative prices. New weights need to be calculated from time to time.

## General information

Stats SA publishes approximately 300 different statistical releases each year. It is not economically viable to produce them in more than one of South Africa's eleven official languages.

Since the releases are used extensively, not only locally but also by international economic and social-scientific communities, Stats SA releases are published in English only.

Stats SA has copyright on this publication. Users may apply the information as they wish, provided that they acknowledge Stats SA as the source of the basic data wherever they process, apply, utilise, publish or distribute the data: and also that they specify that the relevant application and analysis (where applicable) result from their own processing of the data.

### Advanced release calendar

An advanced release calendar is disseminated on [www.statssa.gov.za](http://www.statssa.gov.za)

### Stats SA products

A complete set of Stats SA publications is available at the Stats SA Library and the following libraries:

National Library of South Africa, Pretoria Division  
National Library of South Africa, Cape Town Division  
Natal Society Library, Pietermaritzburg  
Library of Parliament, Cape Town  
Bloemfontein Public Library  
Johannesburg Public Library  
Eastern Cape Library Services, King William's Town  
Central Regional Library, Polokwane  
Central Reference Library, Nelspruit  
Central Reference Collection, Kimberley  
Central Reference Library, Mmabatho

Stats SA also provides a subscription service.

### Electronic services

A large range of data is available via on-line services, diskette, CD and computer printouts. For more details about our electronic data services, contact (012) 310 8600/8390/8351/8496/4892/8095.

You can visit us on the Internet at: [www.statssa.gov.za](http://www.statssa.gov.za)

### General enquiries

Telephone number (012) 317 8485 (technical inquiries)  
(012) 310 2965/ 8220 (technical enquiries)  
(012) 310 8161 (orders)  
(012) 310 4883/ 4885/ 8018 (library)

Fax number: (012) 310 8664 (technical enquiries)

Email: [martin.kohler@dme.gov.za](mailto:martin.kohler@dme.gov.za) (technical enquiries)  
[juan-pierret@statssa.gov.za](mailto:juan-pierret@statssa.gov.za) (technical enquiries)  
[info@statssa.gov.za](mailto:info@statssa.gov.za) (user information services)  
[distribution@statssa.gov.za](mailto:distribution@statssa.gov.za) (orders)

Postal address: Private Bag X44, Pretoria, 0001

*Produced by Stats SA*