



**Department of  
Minerals and Energy**

# **Mining: Production and sales (preliminary)**

**June 2006**

**Embargoed until:  
10 August 2006  
11:00**

**Table A – Selected key figures regarding mining production for June 2006**

**Annual estimates**

|  | <b>June 2006</b> | <b>% change between June 2005 and June 2006</b> | <b>% change between April 2005 to June 2005 and April 2006 to June 2006</b> |
|--|------------------|---|---|
| Index of the physical volume of mining production (2000=100) |                  |   |   |
| Gold   | 64,8             | -9,5%   | -6,9%   |
| Non-gold minerals  | 132,9            | 0,5%  | -3,7%   |
| <b>Total</b>   | <b>115,4</b>     | <b>-1,2%</b>                                    | <b>-4,2%</b>  |

**Shorter term seasonally adjusted estimates**

|  | <b>June 2006</b> | <b>% change between May 2006 and June 2006</b> | <b>% change between January 2006 to March 2006 and April 2006 to June 2006</b> |
|--|------------------|--|--|
| Index of the physical volume of mining production (2000=100) |                  |  |  |
| Gold   | 63,3             | 4,3%   | -2,9%  |
| Non-gold minerals  | 127,4            | 4,8%   | 2,4%   |
| <b>Total</b>   | <b>110,9</b>     | <b>4,6%</b>                                    | <b>1,5%</b>  |

**Key findings regarding mining production as at the end of June 2006**

**Mining production increases**

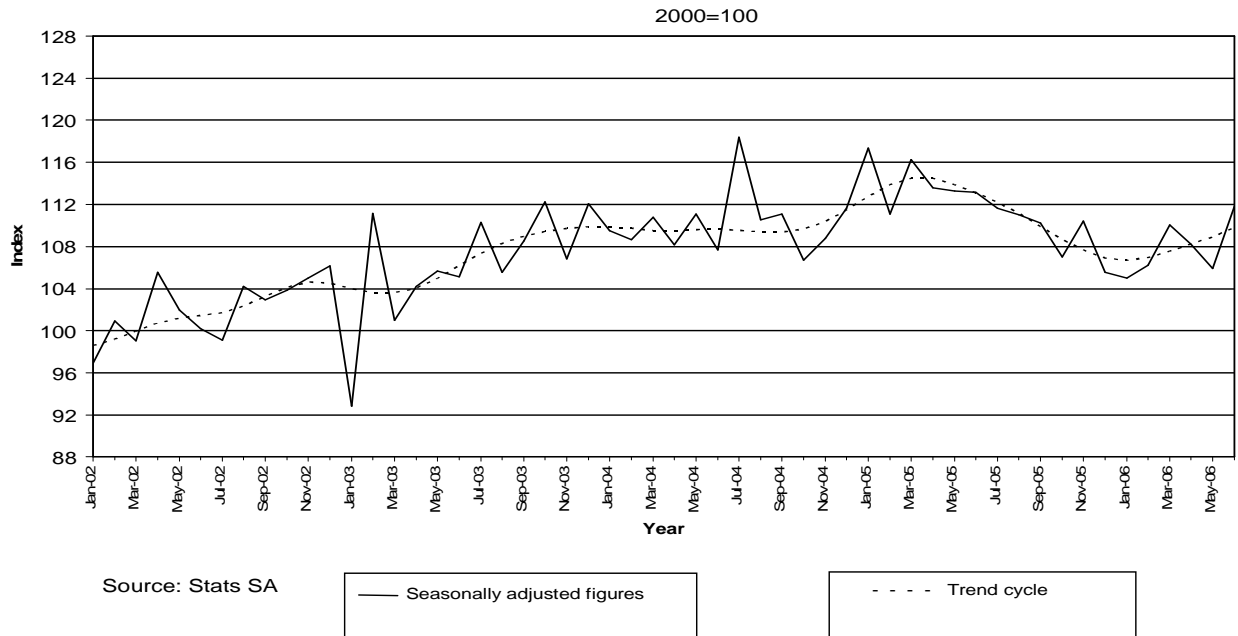
The total mining production for the three months ended June 2006, after seasonal adjustment, increased by 1,5% compared with the previous three months. However, the actual total mining production for the three months ended June 2006 decreased by 4,2% compared with the three months ended June 2005 (see Table A).

The increase of 1,5% in the seasonally adjusted total mining production for the three months ended June 2006, compared with the previous three months was due to an increase of 2,4% in the production of non-gold minerals. The major contributors to the seasonal adjusted increase of 2,4% in the total production of non-gold minerals during the three months ended June 2006 compared with the previous three months was mainly due to the increases in the production of PGM's (1,2 percentage points).

However, gold production after seasonal adjustment decreased by 2,9% for the three months ended June 2006, compared with the previous three months (see Table 4).

Figure 1 shows the seasonally adjusted figures and trend series for the index of mining production between January 2002 and June 2006. The trend series has been rising since beginning of 2002 until November of the same year and started to decline until March 2003 but it had a slight increase until January 2004 and leveled off until October 2004. It started to increase in November 2004 up to April 2005 but declined until January 2006. Since February 2006 the trend started to increase until present.

**Figure 1 - Indices of physical volume of total mining production including gold (Month on month)**



**Table B – Selected key figures regarding mineral sales for May 2006**

**Annual estimates**

|                   | <b>May 2006<br/>R million</b> | <b>% change<br/>between<br/>May 2005<br/>and<br/>May 2006</b> | <b>% change<br/>between<br/>March 2005 to<br/>May 2005<br/>and<br/>March 2006 to<br/>May 2006</b> |
|-------------------|-------------------------------|---|---|
| Mineral sales     |                               |   |   |
| Gold              | 2 601,8                       | 39,4%   | 15,2%   |
| Non-gold minerals | 11 116,9                      | 7,2%  | 18,1%   |
| <b>Total</b>      | <b>13 718,7</b>               | <b>12,1%</b>  | <b>17,6%</b>  |

**Shorter term seasonally adjusted estimates**

|                   | <b>May 2006<br/>R million</b> | <b>% change<br/>between<br/>April 2006<br/>and<br/>May 2006</b> | <b>% change<br/>between<br/>December 2005 to<br/>February 2006<br/>and<br/>March 2006 to<br/>May 2006</b> |
|-------------------|-------------------------------|---|---|
| Mineral sales     |                               |   |   |
| Gold              | 2 718,9                       | 15,9%   | 7,6%  |
| Non-gold minerals | 10 933,2                      | -3,3%   | 6,3%  |
| <b>Total</b>      | <b>13 652,1</b>               | <b>0,0%</b>   | <b>6,5%</b>   |

## Key findings regarding mineral sales as at the end of May 2006

### Mineral sales increase

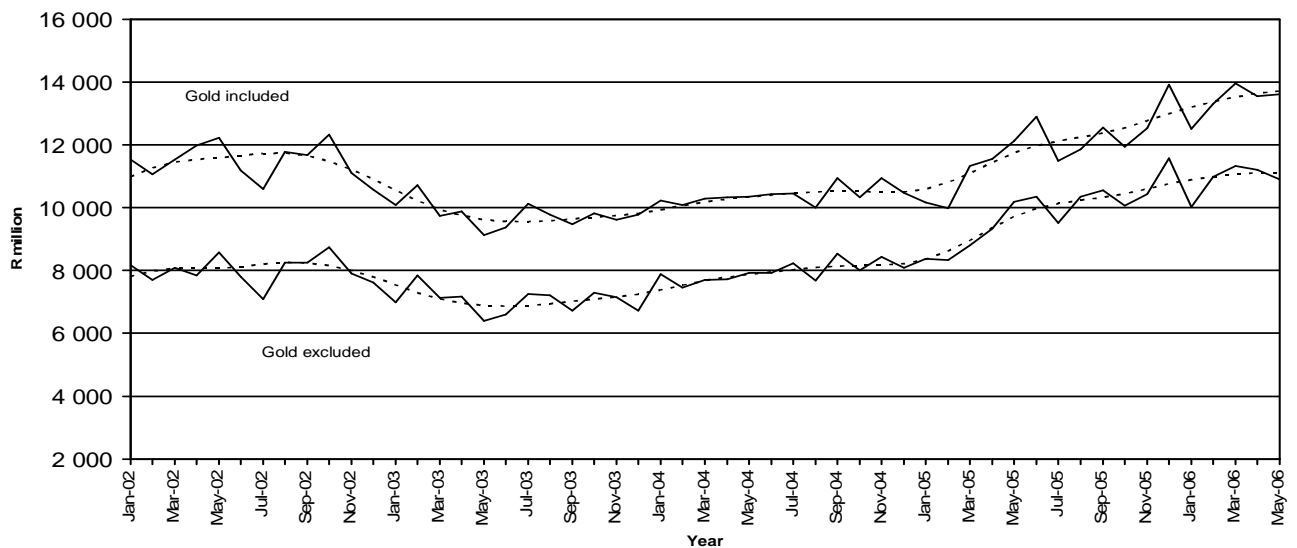
The seasonally adjusted value of mineral sales at current prices for the three months ended May 2006 reflected an increase of 6,5% compared with the previous three months. Furthermore, the actual value of mineral sales at current prices for the three months ended May 2006 increased by 17,6% compared with the three months ended May 2005 (see Table B).

The increase of 6,5% in the seasonally adjusted value of mineral sales for the three months ended May 2006 compared with the previous three months can be attributed to an increase of 7,6% (+R546,0 million) in the sales of gold and 6,3% (+R1 995,0 million) in the sales of non-gold minerals (see Table 16).

The major contributors to the increase of 17,6% in the actual value of mineral sales at current prices for the three months ended May 2006 compared with the three months ended May 2005 were PGM's (+13,4 percentage points or +R4 655,3 million), gold (+2,9 percentage points or +R997,0 million) iron ore (+1,5 percentage points or +R522,9 million), and copper (+1,0 percentage point or +R348,6 million) (see Table 8).

Figure 2 shows the seasonally adjusted figures and trend series of total value of mineral sales between January 2002 and May 2006. Since January 2002 the trend series increased until July 2002 thereafter it decreased until July 2003. The trend series has been rising moderately since August 2003 up until December 2004. Since January 2005 the trend cycle has been increasing until present.

**Figure 2 - Total value of mineral sales including gold**

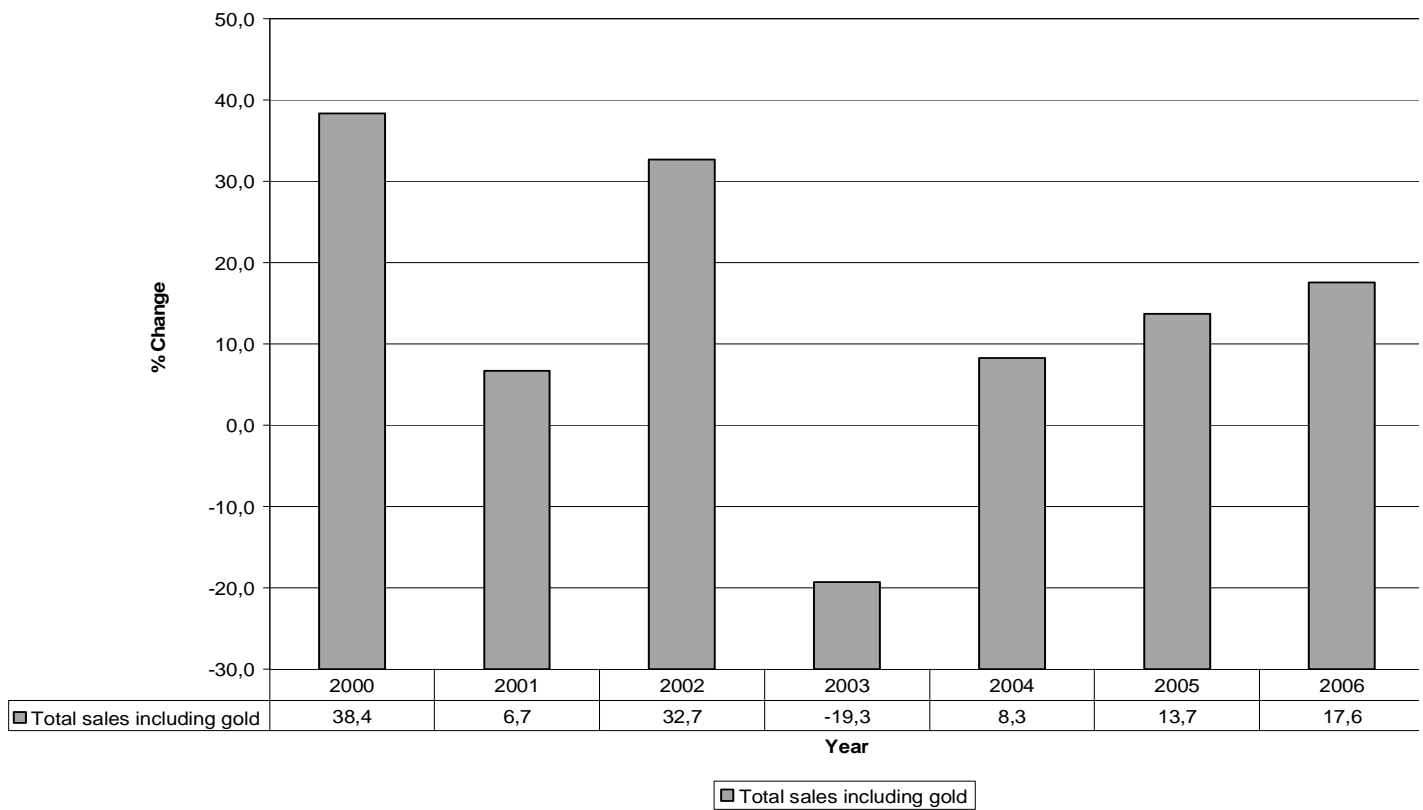


Source: Stats SA



Figure 3 shows the growth in the total value of mineral sales, including gold, for the three months ended May 2006 compared with the three months ended May 2005. The three month growth of 17,6% is the highest for the past four years.

**Figure 3 - Comparison of the last 5 years for the total value of mineral sales, including gold, for the three months ended May 2006 compared with the three months ended May 2005**



**PJ Lehohla**  
**Statistician-General**

## Contents

|  |    |
|--|----|
| <b>Notes</b> .....   | 6  |
| <b>Tables</b>  |    |
| Table 1 Index of the physical volume of mining production including gold (Base 2000=100) .....   | 7  |
| Table 2 Index of the physical volume of mining production excluding gold (Base 2000=100) .....   | 7  |
| Table 3 Indices of physical volume of mining production according to mining divisions, mineral groups and minerals (Base 2000=100) .....         | 8  |
| Table 4 Contribution of the mining divisions to the total mining production (Base 2000=100) .....  | 8  |
| Table 5 Total value of mineral sales including gold (R million) .....  | 9  |
| Table 6 Total value of mineral sales excluding gold (R million) .....  | 9  |
| Table 7 Total value of mineral sales according to mining divisions, mineral groups and minerals (R million) .....                                | 10 |
| Table 8 Contribution of the mining divisions to the total value of mineral sales .....   | 10 |
| Table 9 Percentage change in indices of mining production between the current month and the corresponding month of the previous year .....       | 11 |
| Table 10 Percentage change in indices of mining production between the current quarter and the corresponding quarter of the previous year .....  | 11 |
| Table 11 Percentage change in seasonally adjusted indices of mining production between the current month and the previous month .....            | 11 |
| Table 12 Percentage change in seasonally adjusted indices of mining production between the current quarter and the previous quarter .....        | 11 |
| Table 13 Percentage change in actual value of mineral sales between the current month and the corresponding month of the previous year .....     | 12 |
| Table 14 Percentage change in actual value of mineral sales between the current quarter and the corresponding quarter of the previous year ..... | 12 |
| Table 15 Percentage change in seasonally adjusted value of mineral sales between the current month and the previous month .....                  | 12 |
| Table 16 Percentage change in seasonally adjusted value of mineral sales between the current quarter and the previous quarter .....              | 12 |
| <b>Explanatory notes</b> .....   | 13 |
| <b>Glossary</b> .....  | 15 |
| <b>General information</b> .....   | 16 |

## Notes

| <b>Forthcoming issue</b>     | <b>Issue</b>   | <b>Expected date of publication</b> |
|------------------------------|--|-------------------------------------|
|                              | July 2006  | 12 September 2006                   |
| <b>Purpose of the survey</b> | The monthly mining production and sales survey is a survey conducted by the Minerals Bureau, covering all mining establishments operating in the South African economy. The results of this survey are used to calculate physical volume of mining production indices in order to estimate the gross domestic product (GDP) and its components, which in turn are used to develop and monitor Government policy. |                                     |

Table 1 - Index of the physical volume of mining production including gold (Base 2000=100)

| Month                       | 2000  | 2001  | 2002  | 2003  | 2004  | 2005   | 2006     |
|-----------------------------|-------|-------|-------|-------|-------|--------|----------|
| Actual indices              |       |       |       |       |       |        |          |
| J                           | 93,8  | 95,0  | 89,0  | 85,1  | 100,7 | 107,9  | 96,9*    |
| F                           | 99,3  | 96,8  | 94,2  | 101,7 | 97,8  | 98,6   | 93,6*    |
| M                           | 100,0 | 102,3 | 99,1  | 101,8 | 112,9 | 119,9  | 114,2*   |
| A                           | 95,0  | 98,9  | 102,0 | 101,0 | 105,0 | 110,2  | 104,8*   |
| M                           | 95,7  | 103,6 | 102,9 | 107,1 | 113,0 | 115,2  | 107,7    |
| J                           | 106,8 | 108,4 | 104,1 | 108,6 | 111,1 | 116,8  | 1/ 115,4 |
| J                           | 96,9  | 93,5  | 99,0  | 110,7 | 119,5 | 113,1  |          |
| A                           | 102,1 | 115,2 | 107,2 | 109,1 | 114,3 | 114,8  |          |
| S                           | 104,9 | 98,4  | 108,1 | 114,6 | 117,4 | 116,6  |          |
| O                           | 100,0 | 105,1 | 106,7 | 114,5 | 108,2 | 108,2  |          |
| N                           | 105,5 | 102,6 | 107,5 | 108,6 | 110,1 | 111,4  |          |
| D                           | 100,2 | 97,2  | 107,0 | 113,5 | 113,3 | 107,4* |          |
| Year                        | 100,0 | 101,4 | 102,2 | 106,4 | 110,3 | 111,7  |          |
| Seasonally adjusted indices |       |       |       |       |       |        |          |
| J                           | 103,0 | 104,7 | 97,4  | 92,9  | 109,9 | 117,9  | 105,7    |
| F                           | 103,7 | 102,1 | 100,9 | 111,4 | 108,0 | 109,1  | 103,7    |
| M                           | 99,7  | 102,4 | 99,1  | 101,4 | 111,4 | 116,8  | 110,8    |
| A                           | 98,7  | 102,5 | 105,8 | 104,3 | 108,4 | 113,7  | 108,2    |
| M                           | 95,5  | 103,2 | 102,1 | 105,8 | 111,1 | 113,5  | 106,0    |
| J                           | 101,9 | 103,5 | 99,9  | 104,4 | 106,8 | 112,3  | 110,9    |
| J                           | 97,0  | 93,2  | 98,0  | 109,4 | 117,8 | 111,1  |          |
| A                           | 100,0 | 112,4 | 104,0 | 105,5 | 110,5 | 110,8  |          |
| S                           | 103,4 | 96,3  | 105,0 | 110,1 | 112,1 | 110,9  |          |
| O                           | 96,2  | 101,2 | 103,4 | 112,0 | 106,4 | 107,0  |          |
| N                           | 101,7 | 99,7  | 105,4 | 107,3 | 109,4 | 111,0  |          |
| D                           | 99,2  | 95,0  | 104,7 | 111,1 | 111,6 | 105,7  |          |

Table 2 - Index of the physical volume of mining production excluding gold (Base 2000=100)

| Month                       | 2000  | 2001  | 2002  | 2003  | 2004  | 2005  | 2006     |
|-----------------------------|-------|-------|-------|-------|-------|-------|----------|
| Actual indices              |       |       |       |       |       |       |          |
| J                           | 94,4  | 98,3  | 89,6  | 85,7  | 110,0 | 121,6 | 110,2*   |
| F                           | 96,4  | 98,6  | 95,8  | 107,3 | 104,0 | 108,7 | 104,0*   |
| M                           | 97,9  | 104,4 | 101,0 | 106,2 | 123,6 | 136,2 | 130,8*   |
| A                           | 94,1  | 102,2 | 105,3 | 106,3 | 115,0 | 127,0 | 119,1*   |
| M                           | 96,6  | 108,9 | 107,0 | 114,7 | 124,9 | 131,3 | 124,3*   |
| J                           | 107,5 | 112,5 | 107,3 | 116,4 | 121,1 | 132,3 | 1/ 132,9 |
| J                           | 97,6  | 93,7  | 102,4 | 118,8 | 133,1 | 129,2 |          |
| A                           | 101,7 | 124,5 | 111,2 | 116,3 | 125,5 | 132,2 |          |
| S                           | 105,1 | 99,7  | 111,4 | 122,9 | 130,0 | 132,4 |          |
| O                           | 100,6 | 110,2 | 111,9 | 124,2 | 119,7 | 122,3 |          |
| N                           | 107,4 | 106,8 | 113,3 | 116,2 | 121,3 | 126,2 |          |
| D                           | 100,8 | 97,7  | 111,2 | 123,3 | 127,0 | 120,1 |          |
| Year                        | 100,0 | 104,8 | 105,6 | 113,2 | 121,3 | 126,6 |          |
| Seasonally adjusted indices |       |       |       |       |       |       |          |
| J                           | 103,4 | 108,3 | 97,9  | 93,1  | 119,8 | 132,5 | 119,8    |
| F                           | 101,4 | 104,8 | 103,8 | 119,4 | 116,8 | 122,0 | 116,8    |
| M                           | 98,4  | 105,3 | 101,6 | 106,1 | 122,0 | 132,4 | 126,5    |
| A                           | 97,9  | 106,1 | 109,3 | 109,7 | 118,6 | 130,8 | 122,7    |
| M                           | 95,1  | 107,3 | 105,0 | 112,2 | 121,7 | 128,5 | 121,6    |
| J                           | 102,2 | 107,0 | 102,6 | 111,5 | 116,0 | 127,0 | 127,4    |
| J                           | 96,8  | 92,4  | 100,5 | 116,7 | 130,6 | 126,4 |          |
| A                           | 100,1 | 121,8 | 108,0 | 112,5 | 121,3 | 127,6 |          |
| S                           | 105,1 | 98,7  | 109,1 | 118,7 | 124,5 | 126,0 |          |
| O                           | 95,6  | 105,0 | 107,7 | 120,9 | 117,3 | 120,9 |          |
| N                           | 103,0 | 103,4 | 111,0 | 115,0 | 121,0 | 126,4 |          |
| D                           | 100,9 | 96,0  | 109,3 | 121,1 | 125,4 | 118,6 |          |

1/ Preliminary

\* Revised



Table 3 - Indices of physical volume of mining production according to mining divisions, mineral groups and minerals(Base 2000=100)

| Minerals                    | Weights | Actual indices |        |       |              | Seasonally adjusted indices |       |              |
|-----------------------------|---------|----------------|--------|-------|--------------|-----------------------------|-------|--------------|
|                             |         | 2005           | 2006   |       | 2005<br>Jun. | 2006                        |       | 2005<br>Jun. |
|                             |         |                | 1/ Jun | May * |              | Jun.                        | May   |              |
| Total, gold included        | 100,0   | 111,7          | 115,4  | 107,7 | 116,8        | 110,9                       | 106,0 | 112,3        |
| Total, gold excluded        | 74,3    | 126,6          | 132,9  | 124,3 | 132,3        | 127,4                       | 121,6 | 127,0        |
| Gold                        | 25,7    | 68,4           | 64,8   | 59,6  | 71,6         | 63,3                        | 60,7  | 70,0         |
| Iron ore                    | 3,1     | 118,0          | 123,6  | 124,8 | 124,0        | 116,7                       | 118,3 | 116,9        |
| Chrome                      | 1,1     | 112,5          | 104,8  | 105,2 | 86,4         | 99,8                        | 100,4 | 82,4         |
| Copper                      | 1,6     | 76,7           | 99,2   | 89,2  | 74,0         | 91,7                        | 82,5  | 69,3         |
| Manganese ore               | 1,3     | 126,7          | 147,2  | 148,8 | 138,0        | 135,4                       | 144,3 | 126,3        |
| PGM's                       | 27,6    | 147,4          | 155,6  | 145,6 | 162,4        | 147,3                       | 140,3 | 153,7        |
| Nickel                      | 2,0     | 115,8          | 124,8  | 108,8 | 112,8        | 120,8                       | 102,4 | 108,2        |
| Other metallic minerals     | 2,9     | 92,7           | 95,6   | 90,8  | 90,8         | 95,2                        | 87,5  | 90,5         |
| Diamonds                    | 8,4     | 143,3          | 152,0  | 124,4 | 139,6        | 147,2                       | 132,5 | 134,9        |
| Coal                        | 20,0    | 108,8          | 110,4  | 110,0 | 110,0        | 107,6                       | 106,2 | 107,3        |
| Building materials          | 2,6     | 118,7          | 146,0  | 128,4 | 130,8        | 137,2                       | 127,2 | 123,8        |
| Other non-metallic minerals | 3,8     | 102,8          | 91,2   | 88,0  | 102,8        | 93,9                        | 93,7  | 105,7        |

1/ Preliminary  
\* Revised

Table 4 - Contribution of the mining divisions to the total mining production (Base 2000=100)

| Mining division             | Percentage contribution to the total mining production using the weights | Average seasonally adjusted production index for April 2006 to June 2006 | Quarterly percentage change April 2006 to June 2006 compared with the preceding three months | Contribution (percentage points) to the percentage change in the total mining production 1/ |
|-----------------------------|--|--|--|---|
| Gold                        | 25,7   | 63,5   | -2,9   | -0,7  |
| Non-gold minerals           |  |  |  |   |
| Iron ore                    | 3,1  | 119,7  | 1,8  | 0,1   |
| Copper                      | 1,6  | 82,8   | 31,5   | 0,5   |
| Manganese ore               | 1,3  | 141,9  | 3,9  | 0,1   |
| Chromium                    | 1,1  | 98,2   | -1,5   | 0,0   |
| PGM's                       | 27,6   | 142,8  | 4,4  | 1,2   |
| Nickel                      | 2,0  | 113,2  | 2,5  | 0,1   |
| Other metallic minerals     | 2,9  | 91,8   | -4,9   | -0,1  |
| Diamonds                    | 8,3  | 141,2  | -0,7   | 0,0   |
| Coal                        | 20,0   | 105,8  | -0,5   | -0,1  |
| Building materials          | 2,6  | 128,4  | 5,4  | 0,2   |
| Other non-metallic minerals | 3,8  | 93,8   | 5,4  | 0,2   |
| Total non-gold minerals     | 74,3   | 123,9  | 2,4  | 2,2   |
| Total minerals              | 100  | 108,4  | 1,5  | 1,5   |

1/ The contribution is calculated by multiplying the quarterly percentage change of each mining division with its corresponding weight in the base year, divided by 100.

Table 5 - Total value of mineral sales including gold (R million)

| Month                      | 2000     | 2001      | 2002      | 2003      | 2004      | 2005      | 2006        |
|----------------------------|----------|-----------|-----------|-----------|-----------|-----------|-------------|
| Actual values              |          |           |           |           |           |           |             |
| J                          | 6 244,1  | 9 241,5   | 11 387,0  | 9 868,8   | 9 820,5   | 9 587,4   | 11 735,2*   |
| F                          | 7 115,7  | 9 711,7   | 10 634,4  | 10 236,5  | 9 576,1   | 9 383,8   | 12 468,6*   |
| M                          | 8 958,5  | 8 134,9   | 11 639,2  | 9 829,3   | 10 396,0  | 11 477,1  | 14 150,8*   |
| A                          | 7 521,3  | 8 554,2   | 11 194,9  | 9 294,1   | 9 789,3   | 11 034,0  | 12 987,2*   |
| M                          | 8 222,7  | 9 675,9   | 12 145,3  | 9 104,1   | 10 373,3  | 12 239,8  | 1/ 13 718,7 |
| J                          | 8 222,5  | 10 640,7  | 11 637,2  | 9 745,9   | 10 856,0  | 13 360,1  |             |
| J                          | 7 640,3  | 10 146,3  | 10 779,9  | 10 403,7  | 10 844,2  | 12 001,8  |             |
| A                          | 8 223,4  | 9 586,4   | 11 633,5  | 9 612,0   | 9 841,7   | 11 687,8* |             |
| S                          | 8 568,9  | 8 711,5   | 12 115,1  | 10 008,1  | 11 693,2  | 13 499,3* |             |
| O                          | 8 317,6  | 9 999,6   | 12 514,2  | 9 989,4   | 10 466,3  | 12 074,1* |             |
| N                          | 9 828,5  | 9 627,7   | 11 059,4  | 9 535,8   | 10 815,6  | 12 446,3* |             |
| D                          | 9 474,9  | 11 327,7  | 10 764,4  | 9 899,2   | 10 585,6  | 13 979,0* |             |
| Year                       | 98 338,4 | 115 358,1 | 137 504,5 | 117 526,9 | 125 057,8 | 142 770,5 |             |
| Seasonally adjusted values |          |           |           |           |           |           |             |
| J                          | 6 164,3  | 9 153,2   | 11 400,2  | 9 890,9   | 9 987,3   | 10 049,4  | 12 142,7    |
| F                          | 7 186,5  | 9 840,3   | 10 848,9  | 10 490,6  | 9 932,9   | 9 873,2   | 13 182,6    |
| M                          | 9 446,7  | 8 126,4   | 11 683,9  | 9 920,7   | 10 456,4  | 11 392,5  | 14 101,0    |
| A                          | 7 759,5  | 8 950,0   | 11 863,4  | 9 797,4   | 10 303,0  | 11 527,4  | 13 657,1    |
| M                          | 8 267,7  | 9 697,7   | 12 104,8  | 9 054,4   | 10 316,1  | 12 102,6  | 13 652,1    |
| J                          | 7 942,9  | 10 317,5  | 11 181,1  | 9 349,9   | 10 453,8  | 12 875,6  |             |
| J                          | 7 486,3  | 10 219,9  | 10 730,2  | 10 488,5  | 10 860,8  | 11 908,9  |             |
| A                          | 8 269,9  | 9 614,8   | 11 739,5  | 9 746,4   | 9 936,0   | 11 922,2  |             |
| S                          | 8 574,8  | 8 601,2   | 11 892,1  | 9 564,8   | 11 006,5  | 12 647,8  |             |
| O                          | 8 352,7  | 9 894,4   | 12 291,8  | 9 863,7   | 10 317,4  | 11 931,6  |             |
| N                          | 9 981,6  | 9 774,2   | 11 303,0  | 9 730,6   | 10 967,0  | 12 594,8  |             |
| D                          | 9 054,7  | 10 880,7  | 10 393,7  | 9 656,3   | 10 295,8  | 13 543,9  |             |

Table 6 - Total value of mineral sales excluding gold (R million)

| Month                      | 2000     | 2001     | 2002     | 2003     | 2004     | 2005      | 2006        |
|----------------------------|----------|----------|----------|----------|----------|-----------|-------------|
| Actual values              |          |          |          |          |          |           |             |
| J                          | 4 476,9  | 7 181,9  | 8 002,3  | 6 744,1  | 7 480,6  | 7 809,6   | 9 296,8*    |
| F                          | 4 963,8  | 7 720,8  | 7 368,2  | 7 452,6  | 7 039,8  | 7 813,9   | 10 258,0*   |
| M                          | 6 688,4  | 5 912,0  | 8 110,9  | 7 140,7  | 7 710,4  | 8 840,3   | 11 374,7*   |
| A                          | 5 790,2  | 6 748,0  | 7 481,9  | 6 815,2  | 7 366,5  | 8 963,2   | 10 793,6*   |
| M                          | 6 166,9  | 7 139,7  | 8 619,3  | 6 477,2  | 8 029,3  | 10 372,9  | 1/ 11 116,9 |
| J                          | 5 908,5  | 8 245,9  | 8 035,5  | 6 759,5  | 8 107,4  | 10 562,0  |             |
| J                          | 5 700,6  | 7 779,6  | 7 344,7  | 7 613,1  | 8 699,0  | 10 082,3* |             |
| A                          | 5 892,6  | 6 942,5  | 8 065,2  | 7 052,7  | 7 546,9  | 10 210,7* |             |
| S                          | 6 479,6  | 6 219,3  | 8 562,1  | 7 092,3  | 9 114,1  | 11 365,3* |             |
| O                          | 6 047,1  | 6 971,4  | 8 711,8  | 7 345,5  | 8 089,0  | 10 185,2* |             |
| N                          | 7 529,4  | 6 953,1  | 7 981,8  | 7 154,9  | 8 406,4  | 10 429,2* |             |
| D                          | 7 422,4  | 8 532,3  | 7 834,8  | 6 825,9  | 8 138,7  | 11 534,6* |             |
| Year                       | 73 066,4 | 86 346,5 | 96 118,5 | 84 473,7 | 95 728,1 | 118 169,2 |             |
| Seasonally adjusted values |          |          |          |          |          |           |             |
| J                          | 4 408,8  | 7 110,5  | 8 033,5  | 6 771,2  | 7 640,2  | 8 256,6   | 9 662,8     |
| F                          | 4 937,3  | 7 787,9  | 7 487,7  | 7 614,3  | 7 286,9  | 8 223,9   | 10 851,4    |
| M                          | 7 235,7  | 5 966,3  | 8 253,8  | 7 316,9  | 7 867,2  | 8 874,1   | 11 464,5    |
| A                          | 5 842,1  | 6 923,6  | 7 732,2  | 7 080,7  | 7 691,4  | 9 306,2   | 11 311,8    |
| M                          | 6 120,0  | 7 061,8  | 8 451,3  | 6 331,7  | 7 882,3  | 10 160,6  | 10 933,2    |
| J                          | 5 672,7  | 8 031,9  | 7 813,8  | 6 593,8  | 7 940,1  | 10 332,6  |             |
| J                          | 5 584,7  | 7 836,6  | 7 222,1  | 7 615,0  | 8 647,3  | 9 922,5   |             |
| A                          | 6 012,9  | 7 044,8  | 8 219,8  | 7 181,8  | 7 593,7  | 10 398,7  |             |
| S                          | 6 520,4  | 6 173,6  | 8 474,5  | 6 799,9  | 8 595,2  | 10 669,1  |             |
| O                          | 6 266,5  | 7 080,9  | 8 709,7  | 7 327,7  | 7 980,8  | 10 047,3  |             |
| N                          | 7 613,9  | 7 023,4  | 8 118,2  | 7 259,6  | 8 455,9  | 10 496,8  |             |
| D                          | 6 981,5  | 8 053,7  | 7 450,6  | 6 613,7  | 7 920,2  | 11 200,3  |             |

1/ Preliminary

\* Revised

Table 7 - Total value of mineral sales according to mining divisions, mineral groups and minerals (R million)

| Minerals                    | Actual value |          |          |          |          | Seasonally adjusted value |          |     |
|-----------------------------|--------------|----------|----------|----------|----------|---------------------------|----------|-----|
|                             | 2005         | 2006     |          | 2005     | 2006     |                           |          |     |
|                             |              | 1/ May   | Apr.*    |          | May      | May                       | Apr.     | May |
| Total, gold included        | 142 770,5    | 13 718,7 | 12 987,2 | 12 239,8 | 13 652,1 | 13 657,1                  | 12 102,6 |     |
| Total, gold excluded        | 118 169,2    | 11 116,9 | 10 793,6 | 10 372,9 | 10 933,2 | 11 311,8                  | 10 160,6 |     |
| Gold                        | 24 601,2     | 2 601,8  | 2 193,6  | 1 866,9  | 2 718,9  | 2 345,3                   | 1 942,0  |     |
| Iron ore                    | 7 519,6      | 640,8    | 692,2    | 724,3    | 655,1    | 732,3                     | 743,2    |     |
| Chrome                      | 1 896,3      | 206,1    | 184,3    | 185,1    | 179,9    | 176,9                     | 163,8    |     |
| Copper                      | 2 583,0      | 357,9    | 290,1    | 198,0    | 318,9    | 297,9                     | 178,4    |     |
| Manganese ore               | 2 200,8      | 121,5    | 204,7    | 252,3    | 132,3    | 185,8                     | 279,5    |     |
| PGM's                       | 38 448,8     | 4 381,3  | 4 201,5  | 3 172,4  | 4 495,0  | 4 665,9                   | 3 260,8  |     |
| Nickel                      | 3 923,1      | 500,4    | 380,9    | 368,4    | 504,9    | 364,2                     | 374,6    |     |
| Other metallic minerals     | 4 009,9      | 339,8    | 427,7    | 361,1    | 305,6    | 400,4                     | 325,2    |     |
| Coal                        | 35 585,7     | 2 746,1  | 2 701,1  | 3 010,4  | 2 683,1  | 2 686,5                   | 2 940,9  |     |
| Building materials          | 4 325,3      | 421,8    | 368,1    | 369,8    | 400,9    | 382,6                     | 350,7    |     |
| - Granite or norite         | 416,9        | 31,9     | 29,3     | 25,1     | 35,9     | 35,7                      | 28,0     |     |
| - Lime and limestone        | 1 314,0      | 125,7    | 114,2    | 115,1    | 120,7    | 114,9                     | 110,8    |     |
| - Other building materials  | 2 594,1      | 264,2    | 224,6    | 229,6    | 244,3    | 232,0                     | 211,9    |     |
| Other non-metallic minerals | 17 677,2     | 1 401,2  | 1 343,1  | 1 731,0  | 1 257,5  | 1 419,3                   | 1 543,5  |     |

1/ Preliminary

\* Revised

Table 8 - Contribution of the mining divisions to the total value of mineral sales

| Mining division             | Percentage contribution to total mineral sales during March 2005 to May 2005 | Percentage change between March 2005 to May 2005 and March 2006 to May 2006 | Contribution (percentage points) to the percentage change in the total value of mineral sales 1/ | Difference in sales of mining divisions between March 2005 to May 2005 and March 2006 to May 2006<br><br>R million |
|-----------------------------|--|---|--|--|
| Gold                        | 18,9   | 15,2  | 2,9  | 997,0  |
| Non-gold minerals           |  |   |  |  |
| Iron ore                    | 4,8  | 31,4  | 1,5  | 522,9  |
| Copper                      | 1,7  | 59,8  | 1,0  | 348,6  |
| Manganese ore               | 1,7  | -4,1  | -0,1   | -24,1  |
| Chromium                    | 1,4  | 10,0  | 0,1  | 48,9   |
| PGM's                       | 23,9   | 56,1  | 13,4   | 4 655,3  |
| Nickel                      | 3,0  | 14,5  | 0,5  | 156,1  |
| Other metallic minerals     | 2,7  | 9,8   | 0,3  | 90,9   |
| Coal                        | 24,8   | -5,7  | -1,4   | -489,4   |
| Building materials          | 3,1  | 13,4  | 0,4  | 142,5  |
| Other non-metallic minerals | 14,0   | -7,1  | -1,0   | -342,9   |
| Total non-gold minerals     | 81,1   | 18,1  | 14,7   | 5 108,8  |
| Total minerals              | 100,0  | 17,6  | 17,6   | 6 105,8  |

1/ The contribution to the percentage change in sales is calculated by multiplying the quarterly percentage change of each mineral with the percentage contribution to total mineral sales during March 2005 to May 2005, divided by 100.

Table 9 - Percentage change in indices of mining production between the current month and the corresponding month of the previous year.

|                   | Actual estimates<br>June 2005 | Actual estimates<br>June 2006 | % change<br>between<br>June 2005<br>and<br>June 2006 | Difference<br>between<br>June 2005<br>and<br>June 2006 |
|-------------------|-------------------------------|-------------------------------|--|--|
| Gold              | 71,6                          | 64,8                          | -9,5%  | -6,8   |
| Non-gold minerals | 132,3                         | 132,9                         | 0,5%   | 0,6  |
| Total             | 116,8                         | 115,4                         | -1,2%  | -1,4   |

Table 10 - Percentage change in indices of mining production between the current quarter and the corresponding quarter of the previous year.

|                   | Actual estimates<br>April 2005 to<br>June 2005 | Actual estimates<br>April 2006 to<br>June 2006 | % change<br>between<br>April 2005 to<br>June 2005<br>and<br>April 2006 to<br>June 2006 | Difference<br>between<br>April 2005 to<br>June 2005<br>and<br>April 2006 to<br>June 2006 |
|-------------------|--|--|--|--|
| Gold              | 202,0  | 188,0  | -6,9%  | -14,0  |
| Non-gold minerals | 390,6  | 376,3  | -3,7%  | -14,3  |
| Total             | 342,2  | 327,9  | -4,2%  | -14,3  |

Table 11 - Percentage change in seasonally adjusted indices of mining production between the current month and the previous month.

|                   | Actual estimates<br>May 2006 | Actual estimates<br>June 2006 | % change<br>between<br>May 2006<br>and<br>June 2006 | Difference<br>between<br>May 2006<br>and<br>June 2006 |
|-------------------|------------------------------|-------------------------------|---|---|
| Gold              | 60,7                         | 63,3                          | 4,3%  | 2,6   |
| Non-gold minerals | 121,6                        | 127,4                         | 4,8%  | 5,8   |
| Total             | 106,0                        | 110,9                         | 4,6%  | 4,9   |

Table 12 - Percentage change in seasonally adjusted indices of mining production between the current quarter and the previous quarter.

|                   | Actual estimates<br>January 2006<br>to<br>March 2006 | Actual estimates<br>April 2006 to<br>June 2006 | % change<br>between<br>January 2006<br>to<br>March 2006<br>and<br>April 2006 to<br>June 2006 | Difference<br>between<br>January 2006<br>to<br>March 2006<br>and<br>April 2006 to<br>June 2006 |
|-------------------|--|--|--|--|
| Gold              | 196,1  | 190,4  | -2,9%  | -5,7   |
| Non-gold minerals | 363,1  | 371,7  | 2,4%   | 8,6  |
| Total             | 320,2  | 325,1  | 1,5%   | 4,9  |

Table 13 - Percentage change in actual value of mineral sales between the current month and the corresponding month of the previous year

|                   | Actual estimates<br>May 2005<br>R million | Actual estimates<br>May 2006<br>R million | % change<br>between<br>May 2005<br>and<br>May 2006 | Difference<br>between<br>May 2005<br>and<br>May 2006 |
|-------------------|---|---|--|--|
| Gold              | 1 866,9                                   | 2 601,8                                   | 39,4%  | 734,9  |
| Non-gold minerals | 10 372,9                                  | 11 116,9                                  | 7,2%   | 744,0  |
| Total             | 12 239,8                                  | 13 718,7                                  | 12,1%  | 1 478,9  |

Table 14 - Percentage change in actual value of mineral sales between the current quarter and the corresponding quarter of the previous year.

|                   | Actual estimates<br>March 2005 to<br>May 2005<br>R million | Actual estimates<br>March 2006 to<br>May 2006<br>R million | % change<br>between<br>March 2005 to<br>May 2005 and<br>March 2006 to<br>May 2006 | Difference<br>between<br>March 2005 to<br>May 2005 and<br>March 2006 to<br>May 2006 |
|-------------------|--|--|---|---|
| Gold              | 6 574,5  | 7 571,5  | 15,2%   | 997,0   |
| Non-gold minerals | 28 176,4   | 33 285,2   | 18,1%   | 5 108,8   |
| Total             | 34 750,9   | 40 856,7   | 17,6%   | 6 105,8   |

Table 15 - Percentage change in seasonally adjusted value of mineral sales between the current month and the previous month.

|                   | Actual seasonal<br>adjusted<br>estimates<br>April 2006<br>R million | Actual seasonal<br>adjusted<br>estimates<br>May 2006<br>R million | % change<br>between<br>April 2006<br>and<br>May 2006 | Difference<br>between<br>April 2006<br>and<br>May 2006 |
|-------------------|---|---|--|--|
| Gold              | 2 345,3   | 2 718,9   | 15,9%  | 373,6  |
| Non-gold minerals | 11 311,8  | 10 933,2  | -3,3%  | -378,6   |
| Total             | 13 657,1  | 13 652,1  | 0,0%   | -5,0   |

Table 16 - Percentage change in seasonally adjusted value of mineral sales between the current quarter and the previous quarter

|                   | Actual seasonal<br>adjusted<br>estimates<br>December 2005<br>to<br>February 2006<br>R million | Actual seasonal<br>adjusted<br>estimates<br>March 2006 to<br>May 2006<br>R million | % change<br>between<br>December 2005<br>to<br>February 2006<br>and<br>March 2006 to<br>May 2006 | Difference<br>between<br>December 2005<br>to<br>February 2006<br>and<br>March 2006 to<br>May 2006 |
|-------------------|---|--|---|---|
| Gold              | 7 154,7   | 7 700,7  | 7,6%  | 546,0   |
| Non-gold minerals | 31 714,5  | 33 709,5   | 6,3%  | 1 995,0   |
| Total             | 38 869,2  | 41 410,2   | 6,5%  | 2 541,0   |

## Explanatory notes

- Introduction**
- 1 Statistics South Africa (Stats SA) publishes monthly information regarding the mining industry on the basis of mining production figures and mineral sales furnished by the Minerals Bureau, Department of Minerals and Energy. This statistical release contains detailed information regarding indices of the physical volume of mining production and the total value of mineral sales according to mining divisions and mineral groups on a monthly basis.
  - 2 In accordance with international practice, the indices have to be re-based every five years to a new base year. The base year of the index of the physical volume of mining production is currently 2000=100. Both actual and seasonally adjusted figures are presented.
  - 3 Due to mining production figures being available earlier than mineral sales figures, mining production indices are published one month earlier than mineral sales.
  - 4 The value of mineral sales is calculated, in general, on a free-on-rail/free-on-board basis.
  - 5 In order to improve timeliness, some information for the current month may have been estimated due to late response. These estimates will be revised in future statistical release(s) as soon as more up-to-date information is available.
- Scope of the survey**
- 6 This survey covers mining establishments conducting activities regarding -
    - the extracting, dressing and beneficiating of minerals occurring naturally, for example solids such as coal and ores.
- Classification**
- 7 The 1993 edition of the *Standard Industrial Classification of all Economic Activities (SIC)*, Fifth Edition, Report No. 09-90-02, was used to classify the statistical units in the survey. The SIC is based on the 1990 *International Standard Industrial Classification of all Economic Activities (ISIC)* with suitable adaptations for local conditions. Statistics in this publication are presented at SIC division, major group and subgroup level. Each statistical unit is classified to an industry which reflects the predominant activity of the establishment.
- Statistical unit**
- 8 The basic statistical unit for the collection of information is the mining establishment. An establishment is the smallest economic unit that functions as a separate entity. Each statistical unit is classified to an industry (see paragraph 7).
- Weighting**
- 9 The weights which are used to aggregate minerals to mineral groups and mineral groups to total mining, are based on the value of production derived from detailed information for 2000 supplied by the Minerals Bureau, Department of Minerals and Energy.
- Seasonal adjustment**
- 10 Seasonally adjusted estimates of all items are generated each month, using the X-11 Seasonal Adjustment Program developed by US Bureau of the Census Economic Research and Analyses Division, 1968. Seasonal adjustment is a means of removing the estimated effects of normal seasonal variation from the series so that the effects of other influences on the series can be more clearly recognised. Seasonal adjustment does not aim to remove irregular or non-seasonal influences which may be present in any particular month.
- Influences that are volatile or unsystematic can still make it difficult to interpret the movement of the series even after adjustment for seasonal variations. This means the month-to-month movements of seasonally adjusted estimates may not be reliable indicators of trend behaviour.

- Reliability of estimates**      **11**      Estimates are subject to sampling and non-sampling errors. Figures for the latest month are preliminary.
- Historical data**      **12**      More comprehensive detail on the method of calculation and historical data in respect of the production indices according to mining mineral groups for the period February 1990 to November 2002 is available in statistical release P2041.1, entitled *Mining statistics: Indices of the physical volume of mining production, Base: 2000=100, February 1990 to November 2002*, published on 11 February 2003 on the Stats SA website: [www.statssa.gov.za](http://www.statssa.gov.za)
- Related publications**      **13**      Users may also wish to refer to the following publications which are available from Stats SA -
- *Bulletin of Statistics.*
  - *SA Statistics.*
- Unpublished statistics**      **14**      In some cases Stats SA can also make available statistics not included in standard publications. The statistics can be made available via computer printouts or diskette or CD. Generally, a charge is made for providing unpublished statistics.
- Rounding-off of figures**      **15**      The figures in the tables have, where necessary, been rounded off to the nearest digit shown. There may, therefore, be slight discrepancies between the sums of the constituent items and the totals shown.

## Glossary

|  |   |
|--|---|
| <b>Free-on-rail</b>                                  | Free-on-rail relates to goods sold on the local market where no railage or road transport costs are involved.   |
| <b>Free-on-board basis</b>                           | Free-on-board relates to goods destined for the export market. Railage, road transport and docking charges are involved but no charges are made for the transport by sea.   |
| <b>Index of physical volume of mining production</b> | The index of physical volume of mining production or a production index is a statistical measure of the change in the volume of production. The production index of a mineral group is the ratio between the volume of production of a mineral group in a given period and the volume of production of the same mineral group in the base period. The current base period is 2000. The production in the base period is set at 100. |
| <b>Industry</b>                                      | An industry consists of a group of establishments engaged in the same or similar kinds of economic activity. Industries are defined in the <i>System of National Accounts (SNA)</i> in the same way as in the <i>Standard Industrial Classification (SIC) of all Economic Activities</i> , Fifth Edition of January 1993.   |
| <b>PGM' s - Platinum Group Metals</b>                | Platinum Group Metals include platinum; iridium; osmiridium; palladium; rhodium; ruthenium and osmium.  |
| <b>Sales</b>   | Sales are the total value of sales and transfers-out of goods mined by the mining establishments and the amounts received for installation, erection or assembly or other services rendered.  |
| <b>Weight</b>  | The weight of a mineral group is the ratio of the sales of a mineral group to the total sales of the mining industry. The weight of a mineral group reflects the importance of the mineral group in the total mining industry. The weights change over time due to quality changes and changes in relative prices. New weights need to be calculated from time to time.   |



## General information

Stats SA publishes approximately 300 different statistical releases each year. It is not economically viable to produce them in more than one of South Africa's eleven official languages. Since the releases are used extensively, not only locally but also by international economic and social-scientific communities, Stats SA releases are published in English.

Stats SA has copyright on this publication. Users may apply the information as they wish, provided that they acknowledge Stats SA as the source of the basic data wherever they process, apply, utilise, publish or distribute the data; and also that they specify that the relevant application and analysis (where applicable) result from their own processing of the data.

### Advanced release calendar

An advanced release calendar is disseminated on [www.statssa.gov.za](http://www.statssa.gov.za)

### Stats SA products

A complete set of Stats SA publications is available in the Stats SA Library, and in the following public libraries:

National Library of South Africa, Pretoria Division  
National Library of South Africa, Cape Town Division  
Natal Society Library, Pietermaritzburg  
Library of Parliament, Cape Town  
Bloemfontein Public Library  
Johannesburg Public Library  
Eastern Cape Library Services, King William's Town  
Central Regional Library, Polokwane  
Central Reference Library, Nelspruit  
Central Reference Collection, Kimberley  
Central Reference Library, Mmabatho

Stats SA also provides a subscription service.

### Electronic services

A large range of data are available via on-line services, diskette, CD and computer printouts. For more details about our electronic data services, contact (012) 310 8600/8390/8351/4892/8496/8095.

You can visit us on the Internet at: [www.statssa.gov.za](http://www.statssa.gov.za)

### Enquiries

Telephone number (012) 317 8485 (Martin Köhler )  
(012) 310 8600/ 8390/ 8351/ 4892/ 8496/ 8095 (user information services)  
(012) 310 2965/ 8220 (technical enquiries)  
(012) 310 8161 (orders)  
(012) 310 4883/ 4885/ 8018 (library)

Fax number: (012) 310 8664 (technical enquiries)

Email: [martin.kohler@dme.gov.za](mailto:martin.kohler@dme.gov.za) (technical enquiries)  
[juan-pierret@statssa.gov.za](mailto:juan-pierret@statssa.gov.za) (technical enquiries)  
[info@statssa.gov.za](mailto:info@statssa.gov.za) (user information services)  
[distribution@statssa.gov.za](mailto:distribution@statssa.gov.za) (orders)

Postal address: Private Bag X44, Pretoria, 0001

*Produced by Statistics South Africa and Department of Minerals and Energy*