

**Mining: Production and sales
(preliminary)
July 2004**

**Embargoed until:
7 September 2004
11:00**

Key figures regarding mining production as at the end of July 2004

Actual estimates

	July 2004	% change between July 2003 and July 2004	% change between May 2003 to July 2003 and May 2004 to July 2004	% change between January 2003 to July 2003 and January 2004 to July 2004
Index of the physical volume of mining production (2000=100)				
Gold	81,2	-6,9%	-5,3%	-7,1%
Non-gold minerals	134,3	+13,0%	+9,6%	+11,2%
Total	120,6	+8,9%	+6,6%	+7,2%

Seasonally adjusted estimates

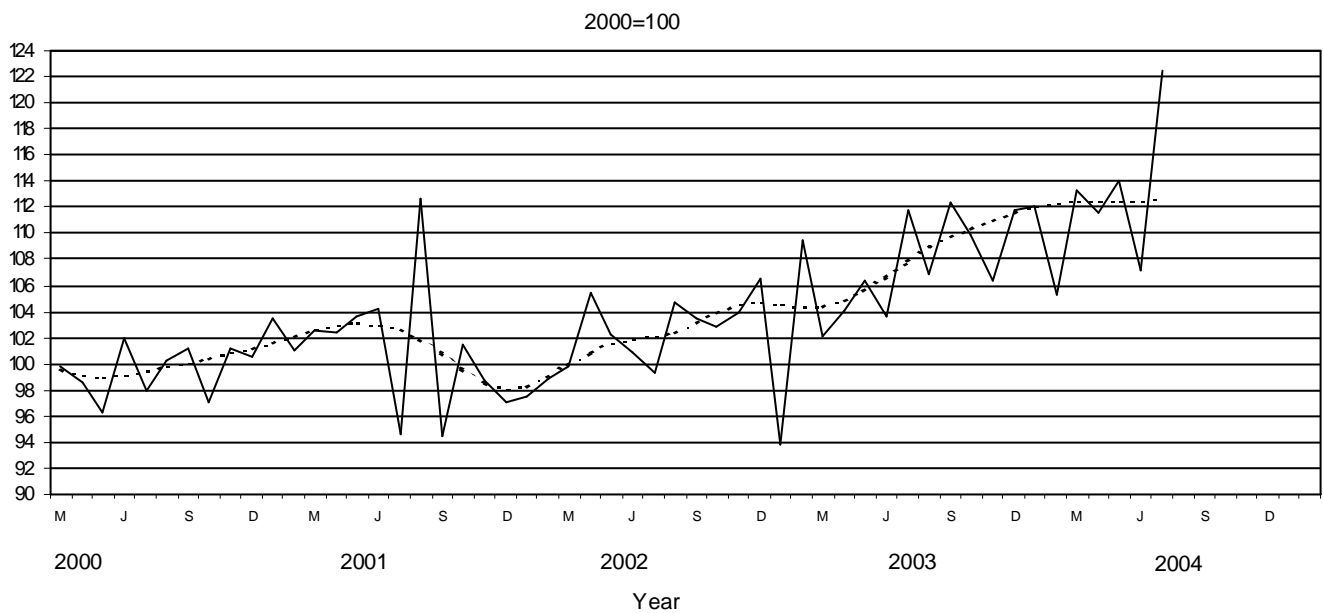
	July 2004	% change between June 2004 and July 2004	% change between February 2004 to April 2004 and May 2004 to July 2004
Index of the physical volume of mining production (2000=100)			
Gold	82,6	+1,7%	+1,0%
Non-gold minerals	136,3	+17,3%	+4,8%
Total	122,5	+14,3%	+4,1%

Key findings regarding mining production as at the end of July 2004

Mining production increases

The total mining production for the three months ended July 2004, after seasonal adjustment, increased by 4,1% compared with the previous three months. This increase was due to a seasonally adjusted increase of 4,8% in the production of non-gold minerals and 1,0% in the production of gold during the three months ended July 2004 compared with the previous three months. The seasonally adjusted increase of 4,8% in the production of non-gold minerals was mainly due to an increase in the production of PGM's (+2,8 percentage points), other non-metallic minerals (+0,4 of a percentage point) and other metals (+0,2 of a percentage point).

Figure 1 - Indices of physical volume of total mining production including gold



Source: Stats SA _____ Seasonally adjusted - - - - Trend cycle

Key figures regarding mineral sales as at the end of June 2004

Actual estimates

	June 2004	% change between June 2003 and June 2004	% change between April 2003 to June 2003 and April 2004 to June 2004	% change between January 2003 to June 2003 and January 2004 to June 2004
R million				
Mineral sales				
Gold	2 779,5	-6,9%	-6,1%	-9,2%
Non-gold minerals	8 122,9	+18,6%	+15,2%	+7,7%
Total	10 902,4	+10,8%	+9,1%	+2,9%

Seasonally adjusted estimates

	June 2004	% change between May 2004 and June 2004	% change between January 2004 to March 2004 and April 2004 to June 2004
R million			
Mineral sales			
Gold	2 608,9	+6,3%	+3,6%
Non-gold minerals	7 975,6	+1,7%	+6,5%
Total	10 584,5	+2,8%	+5,8%

Key findings regarding mineral sales as at the end of June 2004

Mineral sales increase

The seasonally adjusted value of mineral sales at current prices for the second quarter of 2004 reflected an increase of 5,8% compared with the first quarter of 2004. Furthermore, the actual value of mineral sales at current prices for the second quarter of 2004 increased by 9,1% compared with the second quarter of 2003.

The increase of 5,8% in the seasonally adjusted value of mineral sales for the second quarter of 2004 compared with the first quarter of 2004 can be attributed to an increase of 6,5% (+R1 439,4 million) in sales of non-gold minerals and an increase of 3,6% (+R274,3 million) in sales of gold during the same period.

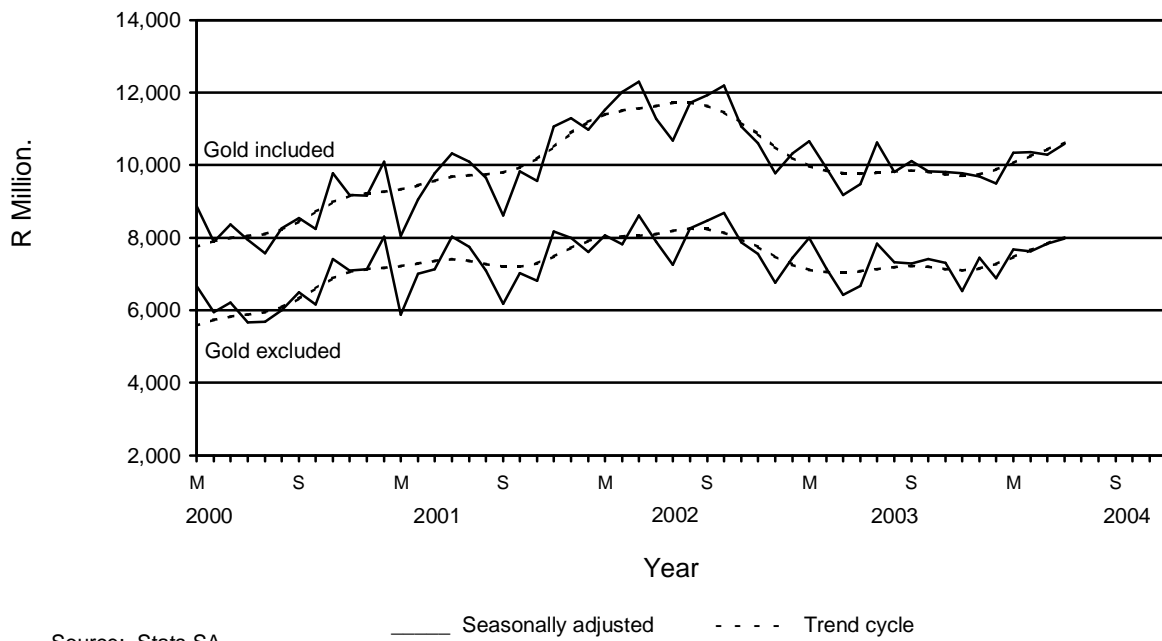
The major contributors to the increase of 9,1% in the actual value of mineral sales at current prices for the second quarter of 2004 compared with the second quarter of 2003 were PGM's (+7,1 percentage points or R2 008,1 million) and nickel (+1,3 percentage points or R372,3 million). However, this increase was counteracted by a decrease in sales of gold (-1,7 percentage points or R496,1 million) (see table A).

Table A - Contribution of the mining divisions to the total value of mineral sales

Mining division	Percentage contribution to total mineral sales during April 2003 to June 2003	Percentage change between April 2003 to June 2003 and April 2004 to June 2004	Contribution (percentage points) to the percentage change in the total value of mineral sales 1/	Difference in sales of mining divisions between April 2003 to June 2003 and April 2004 to June 2004 R million
Gold	28,5	-6,1	-1,7	-496,1
Non-gold minerals				
Iron ore	3,8	5,8	0,2	62,8
Copper	1,3	57,6	0,7	208,9
Manganese ore	1,4	4,4	0,1	16,7
Chromium	1,0	32,8	0,3	95,7
PGM's	21,6	32,7	7,1	2 008,1
Nickel	2,0	67,1	1,3	372,3
Other metallic minerals	2,9	-1,6	-0,0	-13,7
Coal	23,2	3,0	0,7	201,3
Building materials	3,0	4,4	0,1	38,0
Other non-metallic minerals	11,3	2,8	0,3	90,7
Total non-gold minerals	71,5	15,2	10,8	3 080,8
Total minerals	100,0	9,1	9,1	2 584,7

1/ The contribution to the percentage change in sales is calculated by multiplying the quarterly percentage change of each mineral with the percentage contribution to total mineral sales during April 2003 to June 2003, divided by 100.

Figure 2 - Total value of mineral sales including gold



PP
P J Lehohla
Statistician-General

Contents

Notes	6
Tables	
Table 1 Index of the physical volume of mining production including gold (Base 2000=100)	7
Table 2 Seasonally adjusted indices of mining production including gold (Base 2000=100)	7
Table 3 Index of the physical volume of mining production excluding gold (Base 2000=100)	8
Table 4 Seasonally adjusted indices of mining production excluding gold (Base 2000=100)	8
Table 5 Indices of physical volume of mining production according to mining divisions, mineral groups and minerals (Base 2000=100)	9
Table 6 Total value of mineral sales including gold (R million)	10
Table 7 Seasonally adjusted value of mineral sales including gold (R million)	10
Table 8 Total value of mineral sales excluding gold (R million)	11
Table 9 Seasonally adjusted value of mineral sales excluding gold (R million)	11
Table 10 Total value of mineral sales according to mining divisions, mineral groups and minerals (R million)	12
Explanatory notes	13
Glossary	15
General information	16

Notes

Forthcoming issue**Issue****Expected date of publication**

August 2004

12 October 2004

Purpose of the survey

The monthly mining production and sales survey is a survey conducted by the Minerals Bureau, covering all mining establishments operating in the South African economy. The results of this survey are used to calculate physical volume of mining production indices in order to estimate the gross domestic product (GDP) and its components, which in turn are used to develop and monitor Government policy.

Table 1 - Index of the physical volume of mining production including gold (Base 2000=100)

Month	1999	2000	2001	2002	2003*	2004*
January	92,6	93,8	95,0	89,0	85,1	100,7
February	99,0	99,3	96,8	94,2	101,7	97,7
March	104,8	100,0	102,3	99,1	101,8	113,1
April	96,2	95,0	98,9	102,0	101,0	108,5
May	104,5	95,7	103,6	102,9	107,1	115,3
June	103,7	106,8	108,4	104,1	108,6	112,0
July	102,5	96,9	93,5	99,0	110,7	120,6 1/
August	98,4	102,1	115,2	107,2	110,0	
September	104,4	104,9	98,4	108,1	115,4	
October	104,2	100,0	105,1	106,7	115,4	
November	107,0	105,5	102,6	107,5	109,3	
December	100,9	100,2	97,2	107,0	114,1	
Year	101,5	100,0	101,4	102,2	106,7	

Table 2 - Seasonally adjusted indices of mining production including gold (Base 2000=100)

Month	1999	2000	2001	2002	2003	2004
January	98,4	103,2	105,2	98,1	93,9	112,1
February	100,1	103,5	101,8	100,0	109,4	105,3
March	101,9	99,5	102,2	99,1	102,1	113,3
April	97,2	98,5	102,3	105,5	104,1	111,6
May	103,7	95,5	103,4	102,5	106,4	114,0
June	98,2	101,8	103,2	99,3	103,6	107,2
July	103,3	98,0	94,5	99,6	111,7	122,5
August	96,0	99,9	112,3	104,3	106,9	
September	99,4	103,3	96,3	105,5	112,4	
October	100,2	95,9	100,3	101,9	109,9	
November	102,7	101,6	99,3	104,6	106,4	
December	100,5	99,3	95,0	104,7	111,7	

* Revised.

1/ Preliminary.

Table 3 - Index of the physical volume of mining production excluding gold (Base 2000=100)

Month	1999	2000	2001	2002	2003*	2004*
January	90,6	94,4	98,3	89,6	85,7	110,0
February	96,1	96,4	98,6	95,8	107,3	103,9
March	98,6	97,9	104,4	101,0	106,2	123,8
April	91,6	94,1	102,2	105,3	106,3	118,5
May	105,1	96,6	108,9	107,0	114,7	127,0
June	100,7	107,5	112,5	107,3	116,4	122,3
July	103,5	97,6	93,7	102,4	118,8	134,3 1/
August	97,1	101,7	124,5	111,2	117,6	
September	100,6	105,1	99,7	111,4	124,2	
October	104,6	100,6	110,2	111,9	125,5	
November	107,7	107,4	106,8	113,3	117,2	
December	97,2	100,8	97,7	111,2	124,0	
Year	99,5	100,0	104,8	105,6	113,7	

Table 4 - Seasonally adjusted indices of mining production excluding gold (Base 2000=100)

Month	1999	2000	2001	2002	2003	2004
January	95,9	103,7	109,0	98,9	94,6	123,0
February	98,1	101,2	104,4	102,7	116,7	113,3
March	98,2	98,2	105,0	101,7	107,1	124,5
April	93,4	97,6	105,9	109,2	109,8	122,1
May	102,6	95,1	107,6	105,6	113,0	124,8
June	95,9	102,0	106,5	101,7	110,2	116,2
July	103,2	98,1	94,0	102,4	119,6	136,3
August	95,5	99,9	121,6	108,3	114,4	
September	97,5	105,0	98,7	109,7	121,9	
October	99,3	95,2	103,9	105,7	118,2	
November	102,8	102,9	102,8	109,8	113,6	
December	99,8	101,0	96,0	109,3	122,0	

* Revised.

1/ Preliminary.

Table 5 - Indices of physical volume of mining production according to mining divisions, mineral groups and minerals (Base 2000=100)

Minerals	Weights	2003	Actual indices			Seasonally adjusted indices		
			July 2004	June *	July 2003	July 2004	June 2004	July 2003
Total, gold included	100,0	106,7	120,6	112,0	110,7	122,5	107,2	111,7
Total, gold excluded	74,3	113,7	134,3	122,3	118,8	136,3	116,2	119,6
Gold	25,7	86,5	81,2	82,4	87,2	82,6	81,2	88,9
Iron ore	3,1	114,6	116,8	131,6	105,2	120,1	121,1	107,8
Chrome	1,1	111,1	120,4	123,2	116,8	113,1	118,1	109,7
Copper	1,6	88,3	79,6	83,2	78,8	80,3	87,7	79,4
Manganese ore	1,3	93,4	112,4	123,6	94,8	109,4	111,2	92,2
PGM's	27,6	128,9	170,0	136,8	131,6	185,8	128,7	144,1
Nickel	2,0	112,0	122,4	124,8	126,8	112,8	114,0	117,8
Other metallic minerals	2,9	84,0	84,4	83,2	92,0	82,6	82,6	90,4
Diamonds	8,4	117,7	129,6	133,2	133,6	114,8	123,8	118,8
Coal	20,0	105,6	112,4	112,8	112,4	106,8	107,9	106,8
Building materials	2,6	94,9	110,8	110,4	100,8	104,0	107,6	95,7
Other non-metallic minerals	3,8	90,2	109,2	88,4	91,2	107,4	93,7	89,9

* Revised.

1/ Preliminary.

Table 6 - Total value of mineral sales including gold (R million)

Month	1999	2000	2001	2002	2003*	2004
January	6 098,8	6 244,1	9 241,5	11 387,0	9 960,1	9 766,3
February	5 763,6	7 115,7	9 711,7	10 634,4	10 330,0	9 501,6
March	6 445,1	8 958,5	8 134,9	11 639,2	9 922,6	10 037,9
April	5 706,5	7 521,3	8 554,2	11 194,9	9 387,0	9 798,4
May	5 702,9	8 222,7	9 675,9	12 145,3	9 196,3	10 304,1
June	6 391,3	8 222,5	10 640,7	11 637,2	9 836,9	10 902,4 1/
July	5 996,1	7 640,3	10 146,3	10 779,9	10 496,5	
August	6 852,9	8 223,4	9 586,4	11 633,5	9 703,7	
September	6 548,3	8 568,9	8 711,5	12 115,1	10 100,2	
October	6 005,9	8 317,6	9 999,6	12 514,2	10 122,9	
November	7 573,0	9 828,5	9 627,7	11 059,4	9 613,2	
December	7 346,9	9 474,9	11 327,7	10 764,4	9 967,6	
Year	76 431,3	98 338,4	115 358,1	137 504,5	118 637,0	

Table 7 - Seasonally adjusted value of mineral sales including gold (R million)

Month	1999	2000	2001	2002	2003	2004
January	5 993,8	6 173,8	9 143,2	11 313,3	9 780,4	9 686,6
February	5 881,6	7 170,4	9 780,5	10 736,4	10 323,1	9 504,1
March	6 517,1	9 748,6	8 209,8	11 824,7	10 652,9	10 343,3
April	5 918,9	7 767,7	8 968,6	11 909,0	9 921,5	10 368,8
May	5 817,7	8 269,9	9 723,7	12 151,8	9 172,4	10 294,4
June	6 262,8	7 936,4	10 316,0	11 186,8	9 469,2	10 584,5
July	5 865,6	7 487,5	10 232,4	10 729,0	10 617,2	
August	6 800,3	8 279,7	9 603,3	11 699,7	9 807,1	
September	6 771,0	8 590,3	8 679,4	12 180,4	10 107,3	
October	5 930,0	8 343,8	9 840,7	12 144,2	9 833,8	
November	7 652,9	9 917,4	9 741,6	11 264,6	9 810,4	
December	7 142,2	9 050,7	10 859,8	10 444,3	9 782,0	

* Revised.

1/ Preliminary.

Table 8 - Total value of mineral sales excluding gold (R million)

Month	1999	2000	2001	2002	2003*	2004
January	4 033,9	4 476,9	7 181,9	8 002,3	6 835,4	7 426,4
February	3 801,6	4 963,8	7 720,8	7 368,2	7 546,1	6 965,3
March	3 938,7	6 688,4	5 912,0	8 110,9	7 234,0	7 352,2
April	3 802,4	5 790,2	6 748,0	7 481,9	6 908,2	7 329,0
May	3 826,7	6 166,9	7 139,7	8 619,3	6 569,5	7 957,1
June	4 413,3	5 908,5	8 245,9	8 035,5	6 850,5	8 122,9 1/
July	4 061,6	5 700,6	7 779,6	7 344,7	7 706,0	
August	4 956,0	5 892,6	6 942,5	8 065,2	7 144,3	
September	4 480,8	6 479,6	6 219,3	8 562,1	7 184,4	
October	3 947,8	6 047,1	6 971,4	8 711,8	7 479,0	
November	5 038,1	7 529,4	6 953,1	7 981,8	7 232,4	
December	5 139,7	7 422,4	8 532,3	7 834,8	6 894,3	
Year	51 440,6	73 066,4	86 346,5	96 118,5	85 584,1	

Table 9 - Seasonally adjusted value of mineral sales excluding gold (R million)

Month	1999	2000	2001	2002	2003	2004
January	3 948,1	4 417,5	7 116,5	8 017,6	6 767,4	7 441,1
February	3 802,2	4 919,5	7 720,4	7 363,8	7 449,5	6 881,9
March	4 042,4	7 534,2	6 039,8	8 366,6	8 002,1	7 681,4
April	3 874,9	5 843,0	6 928,0	7 711,6	7 146,0	7 628,5
May	3 849,0	6 117,5	7 071,9	8 475,6	6 425,6	7 839,7
June	4 251,8	5 667,5	8 024,3	7 791,9	6 666,6	7 975,6
July	4 029,2	5 596,9	7 883,7	7 297,9	7 833,0	
August	4 968,7	6 024,7	7 051,8	8 240,9	7 327,7	
September	4 714,2	6 537,6	6 247,8	8 736,2	7 283,5	
October	4 066,9	6 258,1	7 045,3	8 642,3	7 410,5	
November	5 045,4	7 555,0	6 985,6	8 061,7	7 313,9	
December	4 920,2	6 965,6	7 979,6	7 378,3	6 536,6	

* Revised.

1/ Preliminary.

Table 10 – Total value of mineral sales according to mining divisions, mineral groups and minerals (R million)

Minerals	2003	Actual value			Seasonally adjusted value		
		June 2004	May *	June 2003	June 2004	May 2004	June 2003
Total, gold included	118 637,0	10 902,4	10 304,1	9 836,9	10 584,5	10 294,4	9 469,2
Total, gold excluded	85 584,1	8 122,9	7 957,1	6 850,5	7 975,6	7 839,7	6 666,6
Gold	33 053,0	2 779,5	2 347,0	2 986,4	2 608,9	2 454,7	2 802,6
Iron ore	4 191,0	405,3	408,0	426,7	354,2	398,2	371,0
Chrome	1 151,6	117,9	138,4	92,3	125,7	133,6	97,0
Copper	1 641,3	195,8	202,9	137,6	206,1	209,7	147,0
Manganese ore	1 467,5	115,6	138,5	141,1	90,2	158,6	109,5
PGM's	28 823,9	2 954,1	2 711,3	2 191,2	3 008,4	2 808,4	2 218,2
Nickel	2 729,2	283,6	286,3	174,6	286,0	306,4	172,7
Other metallic minerals	2 946,7	266,2	308,7	296,6	249,7	273,5	277,8
Coal	26 748,1	2 428,0	2 199,4	2 041,7	2 375,3	2 220,2	1 998,9
Building materials	3 578,4	310,0	309,4	303,8	301,7	300,7	289,5
- Granite or norite	806,5	34,8	30,9	81,0	31,0	35,0	71,3
- Lime and limestone	1 192,1	104,9	108,3	98,5	104,0	107,0	97,6
- Other building material	1 579,7	170,3	170,2	124,2	166,7	158,7	120,6
Other non-metallic minerals	12 306,6	1 046,4	1 254,1	1 044,9	978,3	1 030,4	985,0

* Revised.

1/ Preliminary.

Explanatory notes

- Introduction**
- 1 Statistics South Africa (Stats SA) publishes monthly information regarding the mining industry on the basis of mining production figures and mineral sales furnished by the Minerals Bureau, Department of Minerals and Energy. This statistical release contains detailed information regarding indices of the physical volume of mining production and the total value of mineral sales according to mining divisions and mineral groups on a monthly basis.
 - 2 In accordance with international practice, the indices have to be re-based every five years to a new base year. The base year of the index of the physical volume of mining production is currently 2000=100. Both actual and seasonally adjusted figures are presented.
 - 3 Due to mining production figures being available earlier than mineral sales figures, mining production indices are published one month earlier than mineral sales.
 - 4 The value of mineral sales is calculated, in general, on a free-on-rail/free-on-board basis.
 - 5 In order to improve timeliness, some information for the current month may have been estimated due to late response. These estimates will be revised in future statistical release(s) as soon as more up-to-date information is available.
- Scope of the survey**
- 6 This survey covers mining establishments conducting activities regarding -
 - the extracting, dressing and beneficiating of minerals occurring naturally, for example solids such as coal and ores.
- Classification**
- 7 The 1993 edition of the *Standard Industrial Classification of all Economic Activities (SIC)*, Fifth Edition, Report No. 09-90-02, was used to classify the statistical units in the survey. The SIC is based on the 1990 *International Standard Industrial Classification of all Economic Activities (ISIC)* with suitable adaptations for local conditions. Statistics in this publication are presented at SIC division, major group and subgroup level. Each statistical unit is classified to an industry which reflects the predominant activity of the establishment.
- Statistical unit**
- 8 The basic statistical unit for the collection of information is the mining establishment. An establishment is the smallest economic unit that functions as a separate entity. Each statistical unit is classified to an industry (see paragraph 7).
- Weighting**
- 9 The weights which are used to aggregate minerals to mineral groups and mineral groups to total mining, are based on the value of production derived from detailed information for 2000 supplied by the Minerals Bureau, Department of Minerals and Energy.
- Seasonal adjustment**
- 10 Seasonally adjusted estimates of all items are generated each month, using the X-11 Seasonal Adjustment Program developed by US Bureau of the Census Economic Research and Analyses Division, 1968. Seasonal adjustment is a means of removing the estimated effects of normal seasonal variation from the series so that the effects of other influences on the series can be more clearly recognised. Seasonal adjustment does not aim to remove irregular or non-seasonal influences which may be present in any particular month.
- Influences that are volatile or unsystematic can still make it difficult to interpret the movement of the series even after adjustment for seasonal variations. This means the month-to-month movements of seasonally adjusted estimates may not be reliable indicators of trend behaviour.

Reliability of estimates	11	Estimates are subject to sampling and non-sampling errors. Figures for the latest month are preliminary.
Historical data	12	More comprehensive detail on the method of calculation and historical data in respect of the production indices according to mining mineral groups for the period February 1990 to November 2002 is available in statistical release P2041.1, entitled <i>Mining statistics: Indices of the physical volume of mining production, Base: 2000=100, February 1990 to November 2002</i> , published on 11 February 2003 on the Stats SA website www.statssa.gov.za
Related publications	13	Users may also wish to refer to the following publications which are available from Stats SA - <ul style="list-style-type: none">• <i>Bulletin of Statistics.</i>• <i>SA Statistics.</i>
Unpublished statistics	14	In some cases Stats SA can also make available statistics which are not published. The statistics can be made available via: computer printouts or diskette or CD. Generally a charge is made for providing unpublished statistics.
Rounding-off of figures	15	The figures in the tables have, where necessary, been rounded off to the nearest digit shown. There may, therefore, be slight discrepancies between the sums of the constituent items and the totals shown.

Glossary

Free-on-rail	Free-on-rail relates to goods sold on the local market where no railage or road transport costs are involved.
Free-on-board basis	Free-on-board relates to goods destined for the export market. Railage, road transport and docking charges are involved but no charges are made for the transport by sea.
Index of physical volume of mining production	The index of physical volume of mining production or a production index is a statistical measure of the change in the volume of production. The production index of a mineral group is the ratio between the volume of production of a mineral group in a given period and the volume of production of the same mineral group in the base period. The current base period is 2000. The production in the base period is set at 100.
Industry	An industry consists of a group of establishments engaged in the same or similar kinds of economic activity. Industries are defined in the <i>System of National Accounts (SNA)</i> in the same way as in the <i>Standard Industrial Classification (SIC) of all Economic Activities</i> , Fifth Edition of May 1993.
PGM' s - Platinum Group Metals	Platinum Group Metals includes platinum; iridium; osmiridium; palladium; rhodium; ruthenium and osmium.
Sales	Sales are the total value of sales and transfers-out of goods mined by the mining establishments and the amounts received for installation, erection or assembly or other services rendered.
Weight	The weight of a mineral group is the ratio of the sales of a mineral group to the total sales of the mining industry. The weight of a mineral group reflects the importance of the mineral group in the total mining industry. The weights change over time due to quality changes and changes in relative prices. New weights need to be calculated from time to time.

General information

Stats SA publishes approximately 300 different statistical releases each year. It is not economically viable to produce them in more than one of South Africa's eleven official languages. Since the releases are used extensively, not only locally but also by international economic and social-scientific communities, Stats SA releases are published in English only.

Stats SA has copyright on this publication. Users may apply the information as they wish, provided that they acknowledge Stats SA as the source of the basic data wherever they process, apply, utilise, publish or distribute the data; and also that they specify that the relevant application and analysis (where applicable) result from their own processing of the data.

Advanced release calendar

An advanced release calendar is disseminated on www.statssa.gov.za

Stats SA products

A complete set of Stats SA publications is available in the Stats SA Library, and in the following public libraries:

National Library of South Africa, Pretoria Division
National Library of South Africa, Cape Town Division
Natal Society Library, Pietermaritzburg
Library of Parliament, Cape Town
Bloemfontein Public Library
Johannesburg Public Library
Eastern Cape Library Services, King William's Town
Central Regional Library, Polokwane
Central Reference Library, Nelspruit
Central Reference Collection, Kimberley
Central Reference Library, Mmabatho

Stats SA also provides a subscription service.

Electronic services

A large range of data are available via on-line services, diskette, CD and computer printouts. For more details about our electronic data services, contact (012) 310 8600/8390/8351/4892/8496/8095.

You can visit us on the Internet at: www.statssa.gov.za

Enquiries

Telephone number: (012) 310 8600/ 8390/ 8351/ 4892/ 8496/ 8095 (user information services)
(012) 310 8220/ 310 8228 (technical enquiries)
(012) 310 8161 (orders)
(012) 310 8490 (library)

Fax number: (012) 310 8664 (technical enquiries)

email: mpelim@statssa.gov.za (technical enquiries)
info@statssa.gov.za (user information services)
distribution@statssa.gov.za (orders)

Postal address: Private Bag X44, Pretoria, 0001

Produced by Stats SA