



your leading partner in quality statistics

---

# Statistical release

## P2041

# Mining: Production and sales (Preliminary)

## January 2013

**Embargoed until:**  
**14 March 2013**  
**11:30**

**Enquiries:**

User Information Services  
Tel: (012) 310 8600

**Forthcoming issue:**

February 2013

**Expected release date:**

11 April 2013

**Contents**

**Production: results for January 2013** ..... **3**

    Table A – Key growth rates in the volume of mining production..... 3

    Table B – Seasonally adjusted index of the volume of mining production for the latest three months by mineral group and mineral (Base: 2010=100)..... 3

    Figure 1 – Volume of mining production (Base: 2010=100) ..... 4

    Figure 2 – Volume of mining production (Base: 2010=100): year-on-year percentage change..... 4

**Sales: results for December 2012** ..... **5**

    Table C – Key growth rates in mineral sales at current prices..... 5

    Table D – Seasonally adjusted mineral sales at current prices for the latest three months by mineral group and mineral ..... 5

**Tables** ..... **6**

    Table 1 – Index of the volume of mining production (Base: 2010=100)..... 6

    Table 2 – Year-on-year percentage change in the volume of mining production..... 6

    Table 3 – Seasonally adjusted volume of total mining production ..... 6

    Table 4 – Index of the volume of mining production by mineral group and mineral (Base: 2010=100)..... 7

    Table 5 – Seasonally adjusted index of the volume of mining production by mineral group and mineral (Base: 2010=100) ..... 7

    Table 6 – Year-on-year percentage change in the volume of mining production by mineral group and mineral..... 8

    Table 7 – Contribution of each mineral group and mineral to the year-on-year percentage change in the volume of mining production (percentage points) ..... 8

    Table 8 – Mineral sales at current prices (R million) ..... 9

    Table 9 – Year-on-year percentage change in mineral sales at current prices..... 9

    Table 10 – Seasonally adjusted mineral sales at current prices ..... 9

    Table 11 – Mineral sales at current prices by mineral group and mineral (R million) ..... 10

    Table 12 – Seasonally adjusted mineral sales at current prices by mineral group and mineral (R million) ..... 10

    Table 13 – Year-on-year percentage change in mineral sales at current prices by mineral group and mineral..... 11

    Table 14 – Contribution of each mineral group and mineral to the year-on-year percentage change in mineral sales at current prices (percentage points) ..... 11

**Survey information** ..... **12**

**Technical notes** ..... **13**

**Glossary** ..... **14**

**Technical enquiries** ..... **14**

**General information** ..... **15**

**Production: results for January 2013**

**Table A – Key growth rates in the volume of mining production**

	Aug-12	Sep-12	Oct-12	Nov-12	Dec-12	Jan-13
Year-on-year % change, unadjusted	2,0	-7,3	-8,4	-3,8	-8,9	7,3
Month-on-month % change, seasonally adjusted	-2,6	-6,2	-8,7	12,7	-0,1	5,5
3-month % change, seasonally adjusted 1/	2,9	-3,0	-10,1	-10,1	-6,1	5,4

1/ Percentage change between the previous three months and the three months ending in the month indicated.

Mining production increased by 7,3% year-on-year in January 2013. The highest positive growth rate was recorded for diamonds (55,8%), followed by building materials (35,3%), iron ore (33,4%) and manganese ore (20,0%). The main contributors to the 7,3% increase were iron ore (contributing 4,8 percentage points), diamonds and coal (each contributing 1,1 percentage points). Gold (contributing -1,3 percentage points) and 'other' metallic minerals (contributing -0,7 of a percentage point) were the only negative contributors – see Tables 6 and 7.

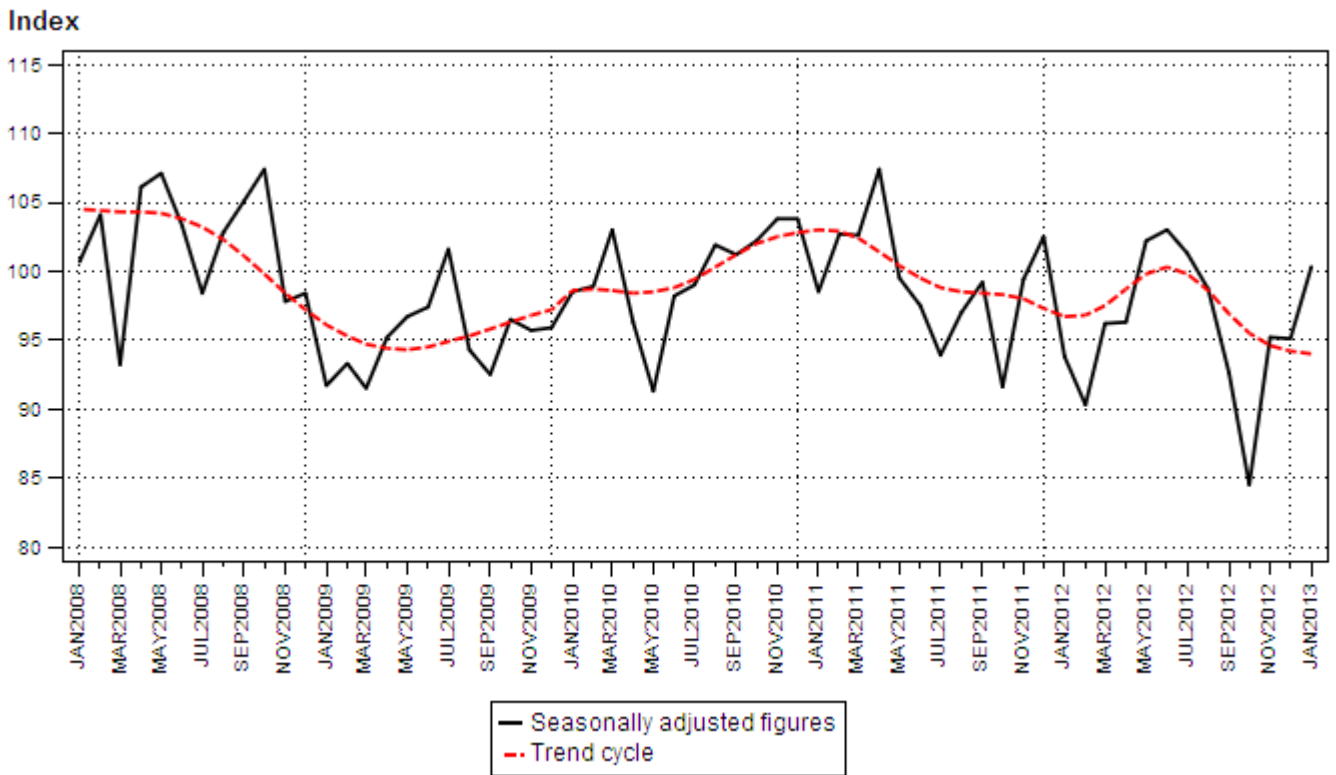
Seasonally adjusted mining production increased by 5,5% in January 2013 compared with December 2012. This followed month-on-month changes of -0,1% in December 2012 and 12,7% in November 2012.

**Table B – Seasonally adjusted index of the volume of mining production for the latest three months by mineral group and mineral (Base: 2010=100)**

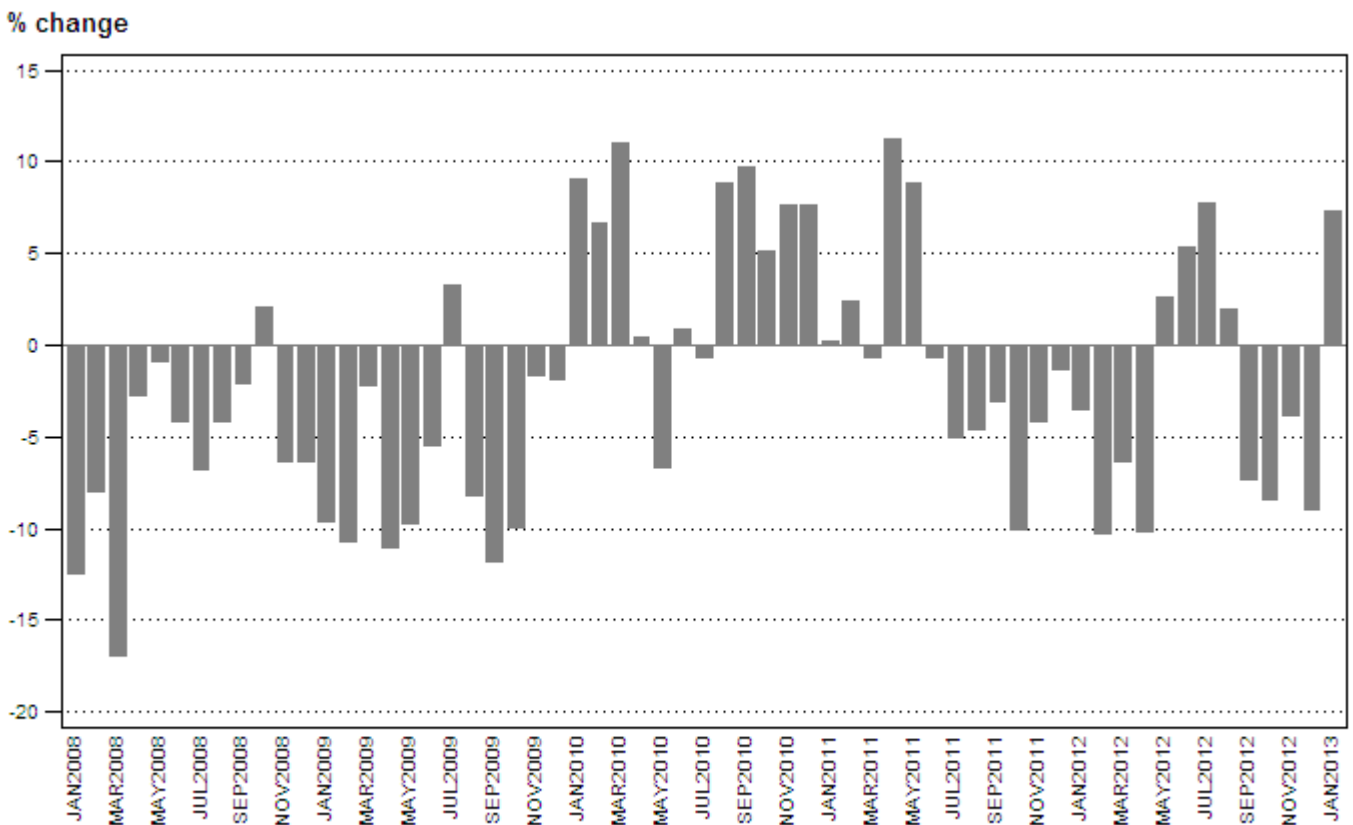
Mineral group and mineral	Weight (2010)	Aug – Oct 2012	Nov 2012 – Jan 2013	% change between Aug – Oct 2012 and Nov 2012 – Jan 2013	Contribution (% points) to the % change in total mining production
Gold	17,7	72,3	73,8	2,1	0,3
Iron ore	14,4	112,7	116,5	3,4	0,6
Chromium ore	2,2	89,9	104,7	16,5	0,4
Copper	1,4	43,6	90,1	106,7	0,7
Manganese ore	3,6	117,9	128,0	8,6	0,4
PGMs	24,6	88,3	88,9	0,7	0,2
Nickel	2,0	120,8	116,5	-3,6	-0,1
Other metallic minerals	2,5	89,7	89,9	0,2	0,0
Diamonds	3,1	74,9	113,4	51,4	1,3
Coal	23,7	98,2	102,1	4,0	1,0
Building materials	1,6	94,7	120,8	27,6	0,5
Other non-metallic minerals	3,2	82,0	86,3	5,2	0,1
<b>Total</b>	<b>100,0</b>	<b>91,9</b>	<b>96,9</b>	<b>5,4</b>	<b>5,4</b>

Seasonally adjusted mining production increased by 5,4% in the three months ended January 2013 compared with the previous three months. The main contributors to the 5,4% increase were diamonds (contributing 1,3 percentage points) and coal (contributing 1,0 percentage point) – see Table B.

**Figure 1 – Volume of mining production (Base: 2010=100)**



**Figure 2 – Volume of mining production (Base: 2010=100): year-on-year percentage change**



**Sales: results for December 2012**

**Table C – Key growth rates in mineral sales at current prices**

	Jul-12	Aug-12	Sep-12	Oct-12	Nov-12	Dec-12
Year-on-year % change, unadjusted	13,5	5,8	-12,9	-13,6	-14,9	-3,3
Month-on-month % change, seasonally adjusted	-1,0	1,5	-8,1	-4,2	2,5	10,0
3-month % change, seasonally adjusted 1/	5,7	5,3	0,3	-6,2	-9,3	-4,4

1/ Percentage change between the previous three months and the three months ending in the month indicated.

Mineral sales decreased by 3,3% year-on-year in December 2012. The largest negative growth rate was recorded for nickel (-21,2%), followed by gold (-16,2%), chromium ore (-13,1%) and PGMs (-10,0%). The major contributors to the 3,3% decrease were gold (contributing -3,3 percentage points), PGMs (contributing -2,3 percentage points) and coal (contributing -1,4 percentage points) – see Tables 13 and 14.

Seasonally adjusted mineral sales at current prices increased by 10,0% in December 2012 compared with November 2012. This followed month-on-month changes of 2,5% in November 2012 and -4,2% in October 2012.

**Table D – Seasonally adjusted mineral sales at current prices for the latest three months by mineral group and mineral**

Mineral group and mineral	% contribution to total mineral sales during Jul – Sept 2012	Jul – Sept 2012 R million	Oct – Dec 2012 R million	% change between Jul – Sept 2012 and Oct – Dec 2012	Contribution to the % change in the total value of mineral sales
Gold	21,6	20 347,8	15 954,4	-21,6	-4,7
Iron ore	17,1	16 041,2	14 378,7	-10,4	-1,8
Chromium ore	1,9	1 826,7	1 980,6	8,4	0,2
Copper	1,2	1 099,4	1 247,4	13,5	0,2
Manganese ore	3,3	3 099,6	2 716,3	-12,4	-0,4
PGMs	18,9	17 792,4	19 383,9	8,9	1,7
Nickel	1,8	1 723,2	1 658,1	-3,8	-0,1
Other metallic minerals	2,6	2 447,3	2 004,6	-18,1	-0,5
Coal	24,8	23 339,5	23 356,8	0,1	0,0
Building materials	2,1	1 962,8	2 106,9	7,3	0,2
Other non-metallic minerals	4,6	4 343,6	5 080,8	17,0	0,8
<b>Total</b>	<b>100,0</b>	<b>94 023,5</b>	<b>89 868,5</b>	<b>-4,4</b>	<b>-4,4</b>

Seasonally adjusted mineral sales at current prices decreased by 4,4% in the fourth quarter of 2012 compared with the previous quarter. This decrease was mainly driven by the sales value of gold (contributing -4,7 percentage points) and iron ore (contributing -1,8 percentage points). The only significant positive contributor was PGMs (contributing 1,7 percentage points) – see Table D.

**PJ Lehohla  
Statistician-General**

**Tables**

**Table 1 – Index of the volume of mining production (Base: 2010=100)**

Month	2007	2008	2009	2010	2011	2012 1/	2013 1/
Jan	99,8	87,4	79,0	86,2	86,4	83,4	89,5
Feb	100,5	92,5	82,6	88,1	90,2	80,9	
Mar	113,9	94,7	92,6	102,8	102,2	95,8	
Apr	103,9	101,1	90,0	90,4	100,5	90,3	
May	109,6	108,6	98,1	91,5	99,6	102,2	
Jun	113,5	108,9	102,9	103,8	103,2	108,8	
Jul	106,2	99,0	102,3	101,7	96,6	104,1	
Aug	112,5	107,9	99,1	107,8	102,8	104,9	
Sep	115,6	113,2	99,8	109,5	106,1	98,4	
Oct	107,3	109,6	98,7	103,7	93,3	85,5	
Nov	109,2	102,3	100,7	108,5	104,0	100,1	
Dec	107,1	100,4	98,5	106,1	104,7	95,4	
<b>Year</b>	<b>108,3</b>	<b>102,1</b>	<b>95,4</b>	<b>100,0</b>	<b>99,1</b>	<b>95,8</b>	

1/ Preliminary.

**Table 2 – Year-on-year percentage change in the volume of mining production**

Month	2008	2009	2010	2011	2012	2013	2013 year-to-date
Jan	-12,4	-9,6	9,1	0,2	-3,5	7,3	7,3
Feb	-7,9	-10,8	6,7	2,4	-10,3		
Mar	-16,8	-2,2	11,0	-0,6	-6,3		
Apr	-2,6	-11,0	0,5	11,2	-10,1		
May	-0,9	-9,7	-6,7	8,9	2,6		
Jun	-4,1	-5,5	0,9	-0,6	5,4		
Jul	-6,8	3,3	-0,5	-5,0	7,8		
Aug	-4,0	-8,2	8,8	-4,6	2,0		
Sep	-2,1	-11,8	9,7	-3,1	-7,3		
Oct	2,1	-9,9	5,0	-10,0	-8,4		
Nov	-6,3	-1,5	7,7	-4,1	-3,8		
Dec	-6,3	-1,9	7,7	-1,3	-8,9		
<b>Year</b>	<b>-5,6</b>	<b>-6,6</b>	<b>4,8</b>	<b>-0,9</b>	<b>-3,3</b>		

**Table 3 – Seasonally adjusted volume of total mining production**

Month	Index (Base: 2010=100)				Month-on-month % change			
	2010	2011	2012	2013	2010	2011	2012	2013
Jan	98,5	98,5	93,8	100,3	2,7	-5,1	-8,5	5,5
Feb	98,9	102,7	90,3		0,4	4,3	-3,7	
Mar	103,0	102,6	96,2		4,1	-0,1	6,5	
Apr	96,3	107,4	96,3		-6,5	4,7	0,1	
May	91,3	99,5	102,2		-5,2	-7,4	6,1	
Jun	98,2	97,5	103,0		7,6	-2,0	0,8	
Jul	99,0	93,9	101,3		0,8	-3,7	-1,7	
Aug	101,9	97,0	98,7		2,9	3,3	-2,6	
Sep	101,2	99,2	92,6		-0,7	2,3	-6,2	
Oct	102,2	91,6	84,5		1,0	-7,7	-8,7	
Nov	103,8	99,4	95,2		1,6	8,5	12,7	
Dec	103,8	102,5	95,1		0,0	3,1	-0,1	

**Table 4 – Index of the volume of mining production by mineral group and mineral (Base: 2010=100) 1/**

Mineral group and mineral	Weight (2010)	Aug-12	Sep-12	Oct-12	Nov-12	Dec-12	Jan-13
Gold	17,7	88,2	88,9	52,0	67,9	74,0	70,4
Iron ore	14,4	128,8	129,0	86,8	116,1	119,6	111,9
Chromium ore	2,2	105,4	89,8	94,0	116,1	85,6	94,2
Copper	1,4	44,2	31,8	39,3	90,5	99,3	95,1
Manganese ore	3,6	142,7	109,5	117,0	127,8	118,7	131,4
PGMs	24,6	105,7	90,8	82,8	104,6	99,6	75,2
Nickel	2,0	122,2	114,7	121,7	122,9	115,7	109,5
Other metallic minerals	2,5	103,7	89,8	80,5	98,0	77,7	91,7
Diamonds	3,1	79,1	91,7	85,1	87,8	116,7	82,9
Coal	23,7	104,8	99,6	105,6	105,8	90,1	96,4
Building materials	1,6	107,0	99,5	107,5	118,5	85,8	98,9
Other non-metallic minerals	3,2	82,1	88,1	87,5	81,8	76,2	86,6
<b>Total</b>	<b>100,0</b>	<b>104,9</b>	<b>98,4</b>	<b>85,5</b>	<b>100,1</b>	<b>95,4</b>	<b>89,5</b>

1/ All values in this table are preliminary.

**Table 5 – Seasonally adjusted index of the volume of mining production by mineral group and mineral (Base: 2010=100)**

Mineral group and mineral	Aug-12	Sep-12	Oct-12	Nov-12	Dec-12	Jan-13	Month-on-month % change
Gold	82,6	83,6	50,6	66,2	71,9	83,2	15,7
Iron ore	126,8	128,8	82,6	115,6	116,9	117,1	0,2
Chromium ore	98,5	84,3	86,9	108,1	96,2	109,7	14,0
Copper	50,7	36,8	43,4	80,3	90,3	99,8	10,5
Manganese ore	127,0	110,2	116,6	121,6	116,1	146,4	26,1
PGMs	96,9	78,7	89,2	92,8	85,1	88,9	4,5
Nickel	117,2	120,0	125,1	121,6	118,0	110,0	-6,8
Other metallic minerals	100,4	91,5	77,1	101,7	80,8	87,3	8,0
Diamonds	72,6	72,8	79,4	87,7	143,7	108,8	-24,3
Coal	98,7	95,2	100,8	101,1	99,8	105,3	5,5
Building materials	98,8	87,4	97,8	107,4	117,8	137,1	16,4
Other non-metallic minerals	79,0	81,9	85,0	84,9	82,7	91,2	10,3
<b>Total</b>	<b>98,7</b>	<b>92,6</b>	<b>84,5</b>	<b>95,2</b>	<b>95,1</b>	<b>100,3</b>	<b>5,5</b>

**Table 6 – Year-on-year percentage change in the volume of mining production by mineral group and mineral**

Mineral group and mineral	Aug-12	Sep-12	Oct-12	Nov-12	Dec-12	Jan-13
Gold	0,0	-12,2	-47,7	-32,1	-21,2	-8,1
Iron ore	25,7	21,0	-22,7	5,5	17,4	33,4
Chromium ore	-6,0	-16,1	-18,3	1,3	-13,3	0,4
Copper	-51,2	-60,9	-56,4	-23,4	-19,5	3,8
Manganese ore	6,4	-15,4	-6,6	10,7	-7,9	20,0
PGMs	-1,9	-18,1	17,4	2,9	-23,2	1,9
Nickel	13,4	6,7	91,7	5,0	-13,5	0,3
Other metallic minerals	-7,7	-15,4	-30,3	-8,7	-31,3	-20,5
Diamonds	2,7	-1,0	-12,5	16,4	184,6	55,8
Coal	-0,4	-3,9	10,3	0,9	-4,5	4,2
Building materials	-2,6	-14,4	-6,3	1,7	20,2	35,3
Other non-metallic minerals	-21,1	-13,5	29,1	-13,3	-10,4	8,3
<b>Total</b>	<b>2,0</b>	<b>-7,3</b>	<b>-8,4</b>	<b>-3,8</b>	<b>-8,9</b>	<b>7,3</b>

**Table 7 – Contribution of each mineral group and mineral to the year-on-year percentage change in the volume of mining production (percentage points)**

Mineral group and mineral	Aug-12	Sep-12	Oct-12	Nov-12	Dec-12	Jan-13
Gold	0,0	-2,1	-9,0	-5,5	-3,4	-1,3
Iron ore	3,7	3,0	-3,9	0,8	2,4	4,8
Chromium ore	-0,1	-0,4	-0,5	0,0	-0,3	0,0
Copper	-0,6	-0,7	-0,8	-0,4	-0,3	0,1
Manganese ore	0,3	-0,7	-0,3	0,4	-0,4	0,9
PGMs	-0,5	-4,7	3,2	0,7	-7,1	0,4
Nickel	0,3	0,1	1,2	0,1	-0,3	0,0
Other metallic minerals	-0,2	-0,4	-0,9	-0,2	-0,8	-0,7
Diamonds	0,1	0,0	-0,4	0,4	2,2	1,1
Coal	-0,1	-0,9	2,5	0,2	-1,0	1,1
Building materials	0,0	-0,3	-0,1	0,0	0,2	0,5
Other non-metallic minerals	-0,7	-0,4	0,7	-0,4	-0,3	0,3
<b>Total</b>	<b>2,0</b>	<b>-7,3</b>	<b>-8,4</b>	<b>-3,8</b>	<b>-8,9</b>	<b>7,3</b>



**Table 8 – Mineral sales at current prices (R million)**

Month	2006	2007	2008	2009	2010	2011	2012 1/
Jan	11 755,1	15 692,9	17 442,2	17 263,9	19 185,1	25 367,7	28 808,5
Feb	12 680,8	17 928,6	21 737,4	19 906,3	20 408,4	27 544,0	30 013,9
Mar	14 179,9	18 555,2	25 894,1	22 093,9	23 860,1	31 486,9	31 790,4
Apr	13 042,6	17 447,8	25 520,6	20 733,6	23 551,4	27 388,9	27 398,8
May	14 046,8	19 841,6	26 737,6	18 463,5	25 535,2	27 851,9	32 262,2
Jun	17 809,8	19 033,2	29 881,0	20 337,3	25 882,9	33 949,7	34 837,7
Jul	17 614,8	17 449,4	27 164,7	20 019,7	25 588,6	27 910,5	31 669,7
Aug	17 339,2	17 890,4	27 064,3	20 144,0	25 897,8	30 304,5	32 048,2
Sep	20 586,6	19 619,7	27 830,7	20 737,7	27 994,7	35 735,9	31 122,0
Oct	18 031,0	18 713,7	27 191,4	19 909,8	27 535,5	33 429,6	28 886,9
Nov	18 918,2	20 674,4	23 991,0	20 128,7	27 114,9	35 304,5	30 028,9
Dec	17 584,7	21 590,8	20 259,5	21 626,2	27 737,9	34 557,3	33 405,0
<b>Total</b>	<b>193 589,5</b>	<b>224 437,7</b>	<b>300 714,5</b>	<b>241 364,6</b>	<b>300 292,5</b>	<b>370 831,4</b>	<b>372 272,2</b>

1/ Preliminary.

**Table 9 – Year-on-year percentage change in mineral sales at current prices**

Month	2007	2008	2009	2010	2011	2012	2012 year-to-date
Jan	33,5	11,1	-1,0	11,1	32,2	13,6	13,6
Feb	41,4	21,2	-8,4	2,5	35,0	9,0	11,2
Mar	30,9	39,6	-14,7	8,0	32,0	1,0	7,4
Apr	33,8	46,3	-18,8	13,6	16,3	0,0	5,6
May	41,3	34,8	-30,9	38,3	9,1	15,8	7,6
Jun	6,9	57,0	-31,9	27,3	31,2	2,6	6,6
Jul	-0,9	55,7	-26,3	27,8	9,1	13,5	7,6
Aug	3,2	51,3	-25,6	28,6	17,0	5,8	7,3
Sep	-4,7	41,9	-25,5	35,0	27,7	-12,9	4,6
Oct	3,8	45,3	-26,8	38,3	21,4	-13,6	2,6
Nov	9,3	16,0	-16,1	34,7	30,2	-14,9	0,8
Dec	22,8	-6,2	6,7	28,3	24,6	-3,3	0,4
<b>Total</b>	<b>15,9</b>	<b>34,0</b>	<b>-19,7</b>	<b>24,4</b>	<b>23,5</b>	<b>0,4</b>	

**Table 10 – Seasonally adjusted mineral sales at current prices**

Month	R million				Month-on-month % change			
	2009	2010	2011	2012	2009	2010	2011	2012
Jan	19 963,5	22 129,2	28 927,7	33 031,9	0,2	3,4	7,2	-1,3
Feb	21 190,0	21 865,4	29 686,0	32 225,3	6,1	-1,2	2,6	-2,4
Mar	20 833,6	22 673,9	29 846,1	30 145,3	-1,7	3,7	0,5	-6,5
Apr	21 887,7	24 792,2	29 082,5	29 023,8	5,1	9,3	-2,6	-3,7
May	18 356,8	25 551,8	28 260,9	32 486,5	-16,1	3,1	-2,8	11,9
Jun	18 947,7	23 931,0	31 082,0	32 201,5	3,2	-6,3	10,0	-0,9
Jul	20 025,1	25 705,7	28 024,2	31 893,3	5,7	7,4	-9,8	-1,0
Aug	20 543,8	25 889,0	30 536,8	32 381,8	2,6	0,7	9,0	1,5
Sep	19 480,9	26 536,1	34 039,7	29 748,4	-5,2	2,5	11,5	-8,1
Oct	19 558,8	27 114,3	32 864,6	28 502,0	0,4	2,2	-3,5	-4,2
Nov	19 646,5	26 591,7	34 454,5	29 228,3	0,4	-1,9	4,8	2,5
Dec	21 409,5	26 984,2	33 470,9	32 138,2	9,0	1,5	-2,9	10,0

**Table 11 – Mineral sales at current prices by mineral group and mineral (R million) 1/**

Mineral group and mineral	Jul-12	Aug-12	Sep-12	Oct-12	Nov-12	Dec-12
Gold	6 808,6	7 346,3	6 618,6	5 024,0	6 186,5	5 884,8
Iron ore	5 595,6	4 080,3	5 125,6	4 976,6	3 794,5	5 709,3
Chromium ore	647,8	709,6	593,8	504,8	776,5	596,0
Copper	461,4	349,1	263,3	332,6	475,5	421,9
Manganese ore	835,8	1 310,2	931,7	741,1	1 006,2	1 184,5
PGMs	5 850,2	6 821,7	6 574,4	5 657,5	5 934,7	7 211,0
Nickel	435,1	536,9	558,2	593,2	618,4	436,5
Other metallic minerals	993,3	722,7	758,0	746,6	391,9	1 252,1
Coal	8 461,3	8 278,5	7 299,4	7 999,8	8 436,9	8 006,7
Building materials	723,9	697,7	666,6	687,7	759,3	585,1
Other non-metallic minerals	856,7	1 195,0	1 732,4	1 622,8	1 648,6	2 117,1
<b>Total</b>	<b>31 669,7</b>	<b>32 048,2</b>	<b>31 122,0</b>	<b>28 886,9</b>	<b>30 028,9</b>	<b>33 405,0</b>

1/ All values in this table are preliminary.

**Table 12 – Seasonally adjusted mineral sales at current prices by mineral group and mineral (R million)**

Mineral group and mineral	Aug-12	Sep-12	Oct-12	Nov-12	Dec-12	Month-on-month % change
Gold	7 396,0	6 170,9	4 847,9	5 499,3	5 607,2	2,0
Iron ore	5 605,1	5 035,1	4 757,6	3 975,3	5 645,8	42,0
Chromium ore	627,8	576,6	510,9	828,8	640,9	-22,7
Copper	387,2	284,0	314,7	476,2	456,5	-4,1
Manganese ore	1 126,7	945,1	698,4	1 114,3	903,6	-18,9
PGMs	6 168,9	5 557,6	6 539,7	5 868,9	6 975,3	18,9
Nickel	556,0	604,6	600,7	608,5	448,9	-26,2
Other metallic minerals	828,2	613,8	720,5	440,0	844,1	91,8
Coal	7 767,9	7 568,3	7 366,9	8 070,5	7 919,4	-1,9
Building materials	653,9	632,8	644,9	680,0	782,0	15,0
Other non-metallic minerals	1 264,1	1 759,6	1 499,8	1 666,5	1 914,5	14,9
<b>Total</b>	<b>32 381,8</b>	<b>29 748,4</b>	<b>28 502,0</b>	<b>29 228,3</b>	<b>32 138,2</b>	<b>10,0</b>

**Table 13 – Year-on-year percentage change in mineral sales at current prices by mineral group and mineral**

Mineral group and mineral	Jul-12	Aug-12	Sep-12	Oct-12	Nov-12	Dec-12
Gold	26,5	34,0	-15,0	-27,1	-23,2	-16,2
Iron ore	-2,1	13,8	-17,4	-9,8	-29,7	2,6
Chromium ore	-20,5	11,4	-26,3	-40,4	11,0	-13,1
Copper	8,3	-16,6	-42,7	-36,0	10,9	6,4
Manganese ore	58,4	38,5	-8,3	-13,5	68,5	-1,5
PGMs	4,6	-2,2	-17,4	-5,4	-12,0	-10,0
Nickel	27,2	12,7	52,1	7,9	5,6	-21,2
Other metallic minerals	4,7	-5,1	-34,2	-36,9	-77,1	56,9
Coal	27,2	-2,5	-4,4	-9,2	-0,3	-5,6
Building materials	15,4	-5,0	-9,6	-2,1	-7,3	15,8
Other non-metallic minerals	-2,8	-33,5	7,2	3,8	-9,0	58,5
<b>Total</b>	<b>13,5</b>	<b>5,8</b>	<b>-12,9</b>	<b>-13,6</b>	<b>-14,9</b>	<b>-3,3</b>

**Table 14 – Contribution of each mineral group and mineral to the year-on-year percentage change in mineral sales at current prices (percentage points)**

Mineral group and mineral	Jul-12	Aug-12	Sep-12	Oct-12	Nov-12	Dec-12
Gold	5,1	6,2	-3,3	-5,6	-5,3	-3,3
Iron ore	-0,4	1,6	-3,0	-1,6	-4,5	0,4
Chromium ore	-0,6	0,2	-0,6	-1,0	0,2	-0,3
Copper	0,1	-0,2	-0,5	-0,6	0,1	0,1
Manganese ore	1,1	1,2	-0,2	-0,3	1,2	-0,1
PGMs	0,9	-0,5	-3,9	-1,0	-2,3	-2,3
Nickel	0,3	0,2	0,5	0,1	0,1	-0,3
Other metallic minerals	0,2	-0,1	-1,1	-1,3	-3,7	1,3
Coal	6,5	-0,7	-0,9	-2,4	-0,1	-1,4
Building materials	0,3	-0,1	-0,2	0,0	-0,2	0,2
Other non-metallic minerals	-0,1	-2,0	0,3	0,2	-0,5	2,3
<b>Total</b>	<b>13,5</b>	<b>5,8</b>	<b>-12,9</b>	<b>-13,6</b>	<b>-14,9</b>	<b>-3,3</b>

**Survey information**

<b>Introduction</b>	1	Statistics South Africa (Stats SA) publishes monthly mining production indices and mineral sales based on the information furnished by the Department of Mineral Resources (DMR). Data in this release are presented by mineral group and mineral.
	2	In accordance with international practice, the indices are usually re-based every five years to a new base year. The current base year of the index of the volume of mining production is 2010=100. Both actual and seasonally adjusted figures are presented.
	3	Due to mining production figures being available earlier than mineral sales figures, mining production indices are published one month earlier than mineral sales.
	4	The value of mineral sales is calculated, in general, on a free-on-rail/free-on-board basis.
	5	In order to improve timeliness, some information for the current month had to be estimated due to late response. These estimates will be revised in future statistical release(s) as soon as more up-to-date information is available.
<b>Purpose of the survey</b>	6	The monthly mining production and sales survey is conducted by the DMR, covering all mining establishments operating in the South African economy. The results of this survey are used to calculate the volume of mining production indices in order to estimate the gross domestic product (GDP) and its components, which in turn are used to develop and monitor government policy.
<b>Scope of the survey</b>	7	This survey covers mining establishments conducting activities regarding the extracting, dressing and beneficiating of minerals occurring naturally, for example solids such as coal and ores.
<b>Classification</b>	8	The 1993 edition of the <i>Standard Industrial Classification of all Economic Activities (SIC)</i> , Fifth Edition, Report No. 09-90-02, was used to classify the statistical units in the survey. The SIC is based on the 1990 <i>International Standard Industrial Classification of all Economic Activities (ISIC)</i> with suitable adaptations for local conditions. Each statistical unit is classified to an industry which reflects the predominant activity of the establishment. Statistics in this publication are presented by mineral group and mineral.
<b>Statistical unit</b>	9	The statistical unit for the collection of information is the mining establishment. An establishment is the smallest economic unit that functions as a separate entity.
<b>Related publications</b>	10	Users may also wish to refer to the following publications which are available from Stats SA – <ul style="list-style-type: none"> <li>• <i>Bulletin of Statistics</i> issued quarterly; and</li> <li>• <i>SA Statistics</i> issued annually.</li> </ul>
<b>Rounding-off of figures</b>	11	The figures in the tables have, where necessary, been rounded off to the nearest digit shown. There may, therefore, be slight discrepancies between the sums of the constituent items and the totals shown.
<b>Historical data and past publications</b>	12	Historical mining data and past publications are available on the Stats SA webpage. Click on the following link ( <a href="#">Time series data</a> ) or ( <a href="#">Past publications</a> ) to access the data and releases electronically.

**Technical notes**

<b>Index of the volume of mining production</b>	<b>1</b>	The index of the volume of mining production, also known as the production index, is a statistical measure of the change in the volume of production. The production index of a mineral group is the ratio between the volume of production of a mineral group in a given period and the volume of production of the same mineral group in the base period. The current base period is 2010. The production in the base period is set at 100.
<b>Index weighting</b>	<b>2</b>	The weight of a mineral group is the ratio of the sales of a mineral group to the total sales of the mining industry. The weight of a mineral group reflects the importance of the mineral group in the total mining industry. The weights change over time due to quality changes and changes in relative prices. New weights need to be calculated from time to time
	<b>3</b>	The weights, which are used to aggregate minerals to mineral groups; and mineral groups to total mining, are based on the value of sales derived from detailed information for 2010 supplied by the Department of Mineral Resources (DMR).
<b>Seasonal adjustment</b>	<b>4</b>	Seasonally adjusted estimates of all items are generated each month, using the X-11 Seasonal Adjustment Program developed by US Bureau of the Census Economic Research and Analyses Division, 1968. Seasonal adjustment is a means of removing the estimated effects of normal seasonal variation from the series so that the effects of other influences on the series can be more clearly recognised. Seasonal adjustment does not aim to remove irregular or non-seasonal influences which may be present in any particular month.
	<b>5</b>	Influences that are volatile or unsystematic can still make it difficult to interpret the movement of the series even after adjustment for seasonal variations. This means the month-to-month movements of seasonally adjusted estimates may not be reliable indicators of trend behaviour.
<b>Trend cycle</b>	<b>6</b>	The trend is the long-term pattern or movement of a time series. The X-11 Seasonal Adjustment Program is used for smoothing seasonally adjusted estimates to estimate the underlying trend cycle.
<b>Reliability of estimates</b>	<b>7</b>	Figures for the latest 2 calendar years are preliminary.
<b>Month-on-month percentage change</b>	<b>8</b>	The month-on-month percentage change in a variable for any given month is the change between that month and the previous month, expressed as a percentage of the latter.
<b>Year-on-year percentage change</b>	<b>9</b>	The year-on-year percentage change in a variable for any given period is the change between that period and the corresponding period of the previous year, expressed as a percentage of the latter.
<b>Index contribution (percentage points)</b>	<b>10</b>	The contribution (percentage points) of a mineral group or mineral to the percentage change in the total mining production for a given period is calculated by multiplying the difference in the index for each mineral group or mineral by the weight of the mineral group or mineral and then dividing by the previous period's total index.
<b>Sales contribution (percentage points)</b>	<b>11</b>	The contribution (percentage points) to the percentage change in total sales for a given period is calculated by multiplying the percentage change of each mineral group or mineral with its percentage contribution to total mineral sales of the previous period, divided by 100.

**Glossary**

<b>Free-on-rail</b>	Free-on-rail relates to goods sold on the local market where no railage or road transport costs are involved.																
<b>Free-on-board</b>	Free-on-board relates to goods destined for the export market. Railage, road transport and docking charges are involved but no charges are made for the transport by sea.																
<b>Industry</b>	An industry consists of a group of establishments engaged in the same or similar kinds of economic activity. Industries are defined in the <i>System of National Accounts (SNA)</i> in the same way as in the <i>Standard Industrial Classification (SIC) of all Economic Activities</i> , Fifth Edition of January 1993.																
<b>PGMs – Platinum group metals</b>	Platinum group metals include platinum; iridium; osmiridium; palladium; rhodium; ruthenium and osmium.																
<b>Sales</b>	Sales are the total value of sales of primary minerals at the first point of saleability by the mining establishment.																
<b>Symbols and abbreviations</b>	<table border="0"> <tr> <td>DMR</td> <td>Department of Mineral Resources</td> </tr> <tr> <td>GDP</td> <td>Gross domestic product</td> </tr> <tr> <td>ISIC</td> <td>International Standard Industrial Classification</td> </tr> <tr> <td>PGMs</td> <td>Platinum group metals</td> </tr> <tr> <td>SIC</td> <td>Standard Industrial Classification of all Economic Activities</td> </tr> <tr> <td>SNA</td> <td>System of National Accounts</td> </tr> <tr> <td>Stats SA</td> <td>Statistics South Africa</td> </tr> <tr> <td>*</td> <td>Revised</td> </tr> </table>	DMR	Department of Mineral Resources	GDP	Gross domestic product	ISIC	International Standard Industrial Classification	PGMs	Platinum group metals	SIC	Standard Industrial Classification of all Economic Activities	SNA	System of National Accounts	Stats SA	Statistics South Africa	*	Revised
DMR	Department of Mineral Resources																
GDP	Gross domestic product																
ISIC	International Standard Industrial Classification																
PGMs	Platinum group metals																
SIC	Standard Industrial Classification of all Economic Activities																
SNA	System of National Accounts																
Stats SA	Statistics South Africa																
*	Revised																

**Technical enquiries**

<b>JP Terblanche</b>	Telephone number: (012) 310 2965 Email: <a href="mailto:juan-pierret@statssa.gov.za">juan-pierret@statssa.gov.za</a>
<b>Martin Kohler</b>	Telephone number: (012) 444 3734 Email: <a href="mailto:martin.kohler@dmr.gov.za">martin.kohler@dmr.gov.za</a>
<b>Gerda Bruwer</b>	Telephone number: (012) 310 8249 Email: <a href="mailto:gerdab@statssa.gov.za">gerdab@statssa.gov.za</a>

## General information

Stats SA publishes approximately 300 different statistical releases each year. It is not economically viable to produce them in more than one of South Africa's eleven official languages. Since the releases are used extensively, not only locally but also by international economic and social-scientific communities, Stats SA releases are published in English only.

Stats SA has copyright on this publication. Users may apply the information as they wish, provided that they acknowledge Stats SA as the source of the basic data wherever they process, apply, utilise, publish or distribute the data: and also that they specify that the relevant application and analysis (where applicable) result from their own processing of the data.

## Advance release calendar

An advance release calendar is disseminated on [www.statssa.gov.za](http://www.statssa.gov.za)

## Stats SA products

A complete set of Stats SA publications is available at the Stats SA Library and the following libraries:

National Library of South Africa, Pretoria Division  
National Library of South Africa, Cape Town Division  
Natal Society Library, Pietermaritzburg  
Library of Parliament, Cape Town  
Bloemfontein Public Library  
Johannesburg Public Library  
Eastern Cape Library Services, King William's Town  
Central Regional Library, Polokwane  
Central Reference Library, Nelspruit  
Central Reference Collection, Kimberley  
Central Reference Library, Mmabatho

Stats SA also provides a subscription service.

## Electronic services

A large range of data is available via on-line services. For more detail about our electronic services, contact Stats SA's user information service at (012) 310 8600.

You can visit us on the Internet at: [www.statssa.gov.za](http://www.statssa.gov.za)

## General enquiries

User information services	Telephone number: (012) 310 8600 Email address: <a href="mailto:info@statssa.gov.za">info@statssa.gov.za</a>
Orders/subscription services	Telephone number: (012) 310 8358 Email address: <a href="mailto:magdaj@statssa.gov.za">magdaj@statssa.gov.za</a>
Postal address	Private Bag X44, Pretoria, 0001

*Produced by Stats SA*