



The South Africa I know, the home I understand

Statistical release

P2041

Mining: Production and sales (Preliminary)

February 2016

Embargoed until:
14 April 2016
11:30

Enquiries:

Juan-Pierre Terblanche
Tel: (012) 310 2965

Forthcoming issue:

March 2016

Expected release date:

12 May 2016

Contents

Production: results for February 2016.....	2
Table A – Key growth rates in the volume of mining production	2
Table B – Seasonally adjusted index of the volume of mining production for the latest three months by mineral group and mineral (Base: 2010=100).....	2
Figure 1 – Volume of mining production (Base: 2010=100).....	3
Figure 2 – Volume of mining production (Base: 2010=100): year-on-year percentage change	3
Sales: results for January 2016.....	4
Table C – Key growth rates in mineral sales at current prices	4
Tables	5
Table 1 – Index of the volume of mining production (Base: 2010=100).....	5
Table 2 – Year-on-year percentage change in the volume of mining production.....	5
Table 3 – Seasonally adjusted volume of total mining production	5
Table 4 – Index of the volume of mining production by mineral group and mineral (Base: 2010=100).....	6
Table 5 – Seasonally adjusted index of the volume of mining production by mineral group and mineral (Base: 2010=100).....	6
Table 6 – Year-on-year percentage change in the volume of mining production by mineral group and mineral.....	7
Table 7 – Contribution of each mineral group and mineral to the year-on-year percentage change in the volume of mining production (percentage points)	7
Table 8 – Mineral sales at current prices (R million).....	8
Table 9 – Year-on-year percentage change in mineral sales at current prices.....	8
Table 10 – Seasonally adjusted total mineral sales at current prices	8
Table 11 – Mineral sales at current prices by mineral group and mineral (R million).....	9
Table 12 – Year-on-year percentage change in mineral sales at current prices by mineral group and mineral.....	9
Table 13 – Contribution of each mineral group and mineral to the year-on-year percentage change in mineral sales at current prices (percentage points).....	9
Survey information.....	10
Technical notes	11
Glossary	12
Technical enquiries	12
General information	13

Production: results for February 2016

Table A – Key growth rates in the volume of mining production

	Sep-15	Oct-15	Nov-15	Dec-15	Jan-16	Feb-16
Year-on-year % change, unadjusted	-4,6	-4,2	-1,2	-1,6	-5,5	-8,7
Month-on-month % change, seasonally adjusted	-3,8	1,1	1,7	-0,8	-5,1	1,3
3-month % change, seasonally adjusted ^{1/}	-2,6	-3,2	-3,5	-0,9	-1,0	-2,2

^{1/} Percentage change between the previous three months and the three months ending in the month indicated.

Mining production decreased by 8,7% year-on-year in February 2016. The largest negative growth rates were recorded for iron ore (-32,5%), building materials (-19,7%), manganese ore (-18,9%) and PGMs (-18,1%). The main negative contributors to the 8,7% decrease were iron ore (contributing -6,8 percentage points), PGMs (contributing -2,2 percentage points) and manganese ore (contributing -1,4 percentage points). Gold was a significant positive contributor (contributing 1,8 percentage points) – see Tables 6 and 7.

Seasonally adjusted mining production increased by 1,3% in February 2016 compared with January 2016. This followed month-on-month changes of -5,1% in January 2016 and -0,8% in December 2015.

Table B – Seasonally adjusted index of the volume of mining production for the latest three months by mineral group and mineral (Base: 2010=100)

Mineral group and mineral	Weight (2012)	Sep – Nov 2015	Dec 2015 – Feb 2016	% change between Sep – Nov 2015 and Dec 2015 – Feb 2016	Contribution (% points) to the % change in total mining production
Gold	21,10	77,8	81,4	4,6	0,8
Iron ore	14,46	115,7	108,4	-6,3	-1,1
Chromium ore	2,27	150,5	132,5	-12,0	-0,4
Copper ¹	1,41	102,3	72,0	-29,6	-0,4
Manganese ore ¹	2,97	213,7	178,0	-16,7	-1,1
PGMs	19,01	92,5	86,2	-6,8	-1,2
Nickel ¹	1,77	148,3	142,8	-3,7	-0,1
Other metallic minerals ¹	2,98	57,7	82,6	43,2	0,8
Diamonds ¹	2,75	101,7	82,4	-19,0	-0,5
Coal	26,45	93,3	99,3	6,4	1,6
Building materials	1,54	115,3	107,7	-6,6	-0,1
Other non-metallic minerals	3,29	78,0	66,1	-15,3	-0,4
Total	100,00	98,1	95,9	-2,2	-2,2

¹ Not seasonally adjusted, because the presence of seasonality is not significant. See notes 4 and 5 on page 11.

Seasonally adjusted mining production decreased by 2,2% in the three months ended February 2016 compared with the previous three months – see Table B.

Figure 1 – Volume of mining production (Base: 2010=100)

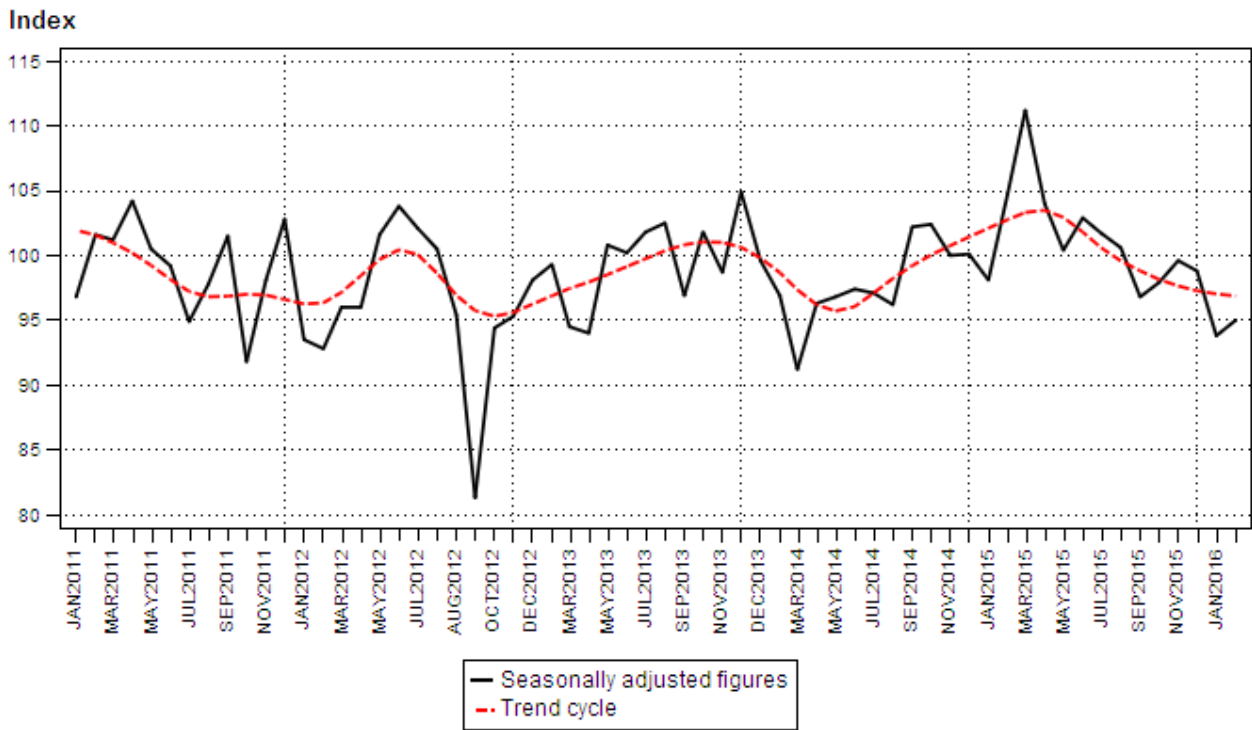
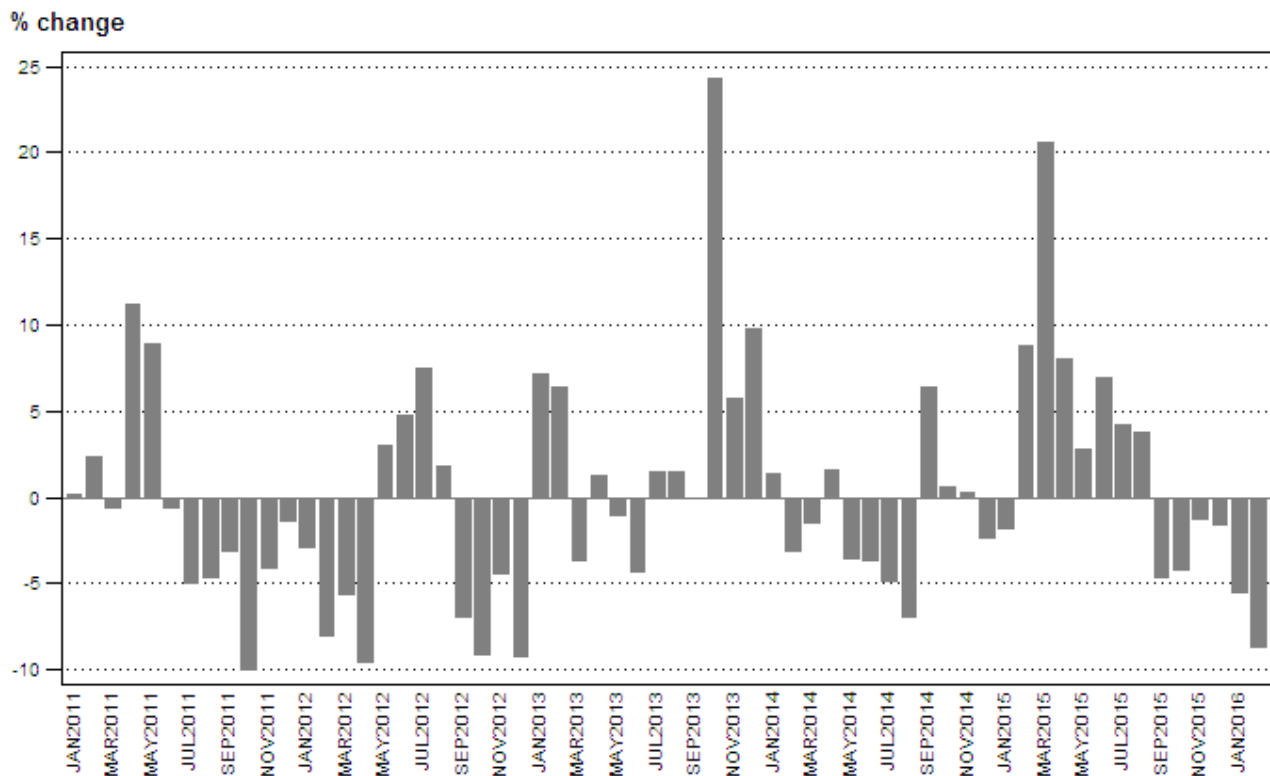


Figure 2 – Volume of mining production (Base: 2010=100): year-on-year percentage change



Sales: results for January 2016

Table C – Key growth rates in mineral sales at current prices

	Aug-15	Sep-15	Oct-15	Nov-15	Dec-15	Jan-16
Year-on-year % change, unadjusted	-2,4	-5,5	-2,6	-3,4	2,7	-1,5
Month-on-month % change, seasonally adjusted	0,8	1,9	1,2	-2,1	2,7	-3,9
3-month % change, seasonally adjusted 1/	-4,4	-5,7	-2,9	0,1	2,2	-0,2

1/ Percentage change between the previous three months and the three months ending in the month indicated.

Mineral sales decreased by 1,5% year-on-year in January 2016. The largest negative contributors to the decrease of 1,5% were iron ore (-37,3% and contributing -5,9 percentage points), manganese ore (-60,0% and contributing -3,7 percentage points) and chromium ore (-30,8% and contributing -1,2 percentage points).

Three minerals with significant positive contributions were gold (31,3% and contributing 4,1 percentage points), PGMs (12,4% and contributing 2,3 percentage points) and 'other' non-metallic minerals (45,2% and contributing 2,1 percentage points) – see Tables 12 and 13.

Seasonally adjusted mineral sales at current prices decreased by 3,9% in January 2016 compared with December 2015. This followed month-on-month changes of 2,7% in December 2015 and -2,1% in November 2015.

PJ Lehohla
Statistician-General

Tables

Table 1 – Index of the volume of mining production (Base: 2010=100)

Month	2010	2011	2012	2013	2014	2015 1/	2016 1/
Jan	86,2	86,4	83,9	89,9	91,2	89,6	84,7
Feb	88,1	90,2	83,0	88,3	85,6	93,1	85,0
Mar	102,8	102,2	96,5	93,0	91,6	110,5	
Apr	90,4	100,5	91,0	92,2	93,7	101,2	
May	91,5	99,6	102,6	101,6	98,0	100,7	
Jun	103,8	103,2	108,2	103,5	99,8	106,7	
Jul	101,7	96,6	103,8	105,4	100,3	104,5	
Aug	107,8	102,8	104,6	106,2	98,9	102,7	
Sep	109,5	106,1	98,8	98,8	105,1	100,3	
Oct	103,7	93,3	84,8	105,4	106,0	101,5	
Nov	108,5	104,0	99,4	105,2	105,5	104,2	
Dec	106,1	104,7	95,1	104,4	102,0	100,4	
Year	100,0	99,1	96,0	99,5	98,1	101,3	

1/ Preliminary.

Table 2 – Year-on-year percentage change in the volume of mining production

Month	2011	2012	2013	2014	2015	2016	2016 year-to-date
Jan	0,2	-2,9	7,2	1,4	-1,8	-5,5	-5,5
Feb	2,4	-8,0	6,4	-3,1	8,8	-8,7	-7,1
Mar	-0,6	-5,6	-3,6	-1,5	20,6		
Apr	11,2	-9,5	1,3	1,6	8,0		
May	8,9	3,0	-1,0	-3,5	2,8		
Jun	-0,6	4,8	-4,3	-3,6	6,9		
Jul	-5,0	7,5	1,5	-4,8	4,2		
Aug	-4,6	1,8	1,5	-6,9	3,8		
Sep	-3,1	-6,9	0,0	6,4	-4,6		
Oct	-10,0	-9,1	24,3	0,6	-4,2		
Nov	-4,1	-4,4	5,8	0,3	-1,2		
Dec	-1,3	-9,2	9,8	-2,3	-1,6		
Year	-0,9	-3,1	3,6	-1,4	3,3		

Table 3 – Seasonally adjusted volume of total mining production

Month	Index (Base: 2010=100)				Month-on-month % change			
	2013	2014	2015	2016	2013	2014	2015	2016
Jan	98,1	99,6	98,1	93,8	2,9	-5,1	-2,0	-5,1
Feb	99,3	96,9	104,8	95,0	1,2	-2,7	6,8	1,3
Mar	94,5	91,2	111,2		-4,8	-5,9	6,1	
Apr	94,0	96,3	104,0		-0,5	5,6	-6,5	
May	100,8	96,8	100,4		7,2	0,5	-3,5	
Jun	100,2	97,4	102,9		-0,6	0,6	2,5	
Jul	101,8	97,1	101,7		1,6	-0,3	-1,2	
Aug	102,5	96,2	100,6		0,7	-0,9	-1,1	
Sep	96,9	102,2	96,8		-5,5	6,2	-3,8	
Oct	101,8	102,4	97,9		5,1	0,2	1,1	
Nov	98,7	100,0	99,6		-3,0	-2,3	1,7	
Dec	104,9	100,1	98,8		6,3	0,1	-0,8	

Table 4 – Index of the volume of mining production by mineral group and mineral (Base: 2010=100) 1/

Mineral group and mineral	Weight (2012)	Sep-15	Oct-15	Nov-15	Dec-15	Jan-16	Feb-16
Gold	21,10	84,8	78,7	85,8	82,7	61,1	77,9
Iron ore	14,46	116,9	114,8	122,5	116,5	100,0	90,6
Chromium ore	2,27	163,1	156,1	157,7	113,7	103,4	137,1
Copper	1,41	101,5	109,3	96,1	77,9	58,0	80,0
Manganese ore	2,97	223,6	231,5	186,0	185,8	163,2	185,0
PGMs	19,01	94,7	97,0	106,0	116,0	72,4	49,8
Nickel	1,77	142,1	145,9	156,9	161,2	136,3	130,8
Other metallic minerals	2,98	62,5	65,5	45,0	95,2	73,7	78,9
Diamonds	2,75	75,1	126,9	103,0	83,8	73,9	89,5
Coal	26,45	93,7	94,6	99,6	88,9	96,0	96,5
Building materials	1,54	124,2	135,7	129,5	78,0	84,9	92,2
Other non-metallic minerals	3,29	78,8	81,3	74,1	64,9	67,4	65,9
Total	100,00	100,3	101,5	104,2	100,4	84,7	85,0

1/ All index values in this table are preliminary.

Table 5 – Seasonally adjusted index of the volume of mining production by mineral group and mineral (Base: 2010=100)

Mineral group and mineral	Sep-15	Oct-15	Nov-15	Dec-15	Jan-16	Feb-16	Month-on-month % change
Gold	79,0	75,1	79,2	79,1	78,4	86,6	10,5
Iron ore	114,8	113,1	119,3	116,9	103,8	104,5	0,7
Chromium ore	151,8	147,9	151,8	127,6	126,0	143,8	14,1
Copper ¹	101,5	109,3	96,1	77,9	58,0	80,0	37,9
Manganese ore ¹	223,6	231,5	186,0	185,8	163,2	185,0	13,4
PGMs	89,3	94,1	94,2	93,7	85,0	79,9	-6,0
Nickel ¹	142,1	145,9	156,9	161,2	136,3	130,8	-4,0
Other metallic minerals ¹	62,5	65,5	45,0	95,2	73,7	78,9	7,1
Diamonds ¹	75,1	126,9	103,0	83,8	73,9	89,5	21,1
Coal	91,4	89,4	99,2	98,8	101,5	97,5	-3,9
Building materials	113,8	116,1	115,9	112,3	115,7	95,0	-17,9
Other non-metallic minerals	80,2	78,5	75,4	63,0	68,7	66,6	-3,1
Total	96,8	97,9	99,6	98,8	93,8	95,0	1,3

¹ Not seasonally adjusted, because the presence of seasonality is not significant. See notes 4 and 5 on page 11.

Table 6 – Year-on-year percentage change in the volume of mining production by mineral group and mineral

Mineral group and mineral	Sep-15	Oct-15	Nov-15	Dec-15	Jan-16	Feb-16
Gold	-0,7	-6,4	3,6	-2,8	27,0	11,1
Iron ore	-17,8	-18,4	-19,8	-14,3	-26,3	-32,5
Chromium ore	16,0	8,4	7,6	-5,5	-12,9	8,2
Copper	17,5	5,9	8,5	-14,9	-43,8	-6,9
Manganese ore	11,5	3,7	-15,5	-19,9	-21,2	-18,9
PGMs	22,2	26,6	23,8	20,1	3,3	-18,1
Nickel	6,0	4,9	23,3	16,5	5,5	16,6
Other metallic minerals	-34,1	-17,9	-54,9	11,7	-3,3	-4,6
Diamonds	-36,9	20,3	2,7	-10,1	-16,0	12,9
Coal	-12,7	-14,6	0,4	-2,2	-0,3	-0,6
Building materials	0,1	-0,4	8,5	2,9	-0,1	-19,7
Other non-metallic minerals	-0,9	-5,2	-0,7	-7,5	-10,4	-9,7
Total	-4,6	-4,2	-1,2	-1,6	-5,5	-8,7

Table 7 – Contribution of each mineral group and mineral to the year-on-year percentage change in the volume of mining production (percentage points)

Mineral group and mineral	Sep-15	Oct-15	Nov-15	Dec-15	Jan-16	Feb-16
Gold	-0,1	-1,1	0,6	-0,5	3,1	1,8
Iron ore	-3,5	-3,5	-4,1	-2,8	-5,8	-6,8
Chromium ore	0,5	0,3	0,2	-0,1	-0,4	0,3
Copper	0,2	0,1	0,1	-0,2	-0,7	-0,1
Manganese ore	0,6	0,2	-1,0	-1,3	-1,5	-1,4
PGMs	3,1	3,7	3,7	3,6	0,5	-2,2
Nickel	0,1	0,1	0,5	0,4	0,1	0,4
Other metallic minerals	-0,9	-0,4	-1,5	0,3	-0,1	-0,1
Diamonds	-1,2	0,6	0,1	-0,3	-0,4	0,3
Coal	-3,4	-4,0	0,1	-0,5	-0,1	-0,2
Building materials	0,0	0,0	0,1	0,0	0,0	-0,4
Other non-metallic minerals	0,0	-0,1	0,0	-0,2	-0,3	-0,3
Total	-4,6	-4,2	-1,2	-1,6	-5,5	-8,7

Table 8 – Mineral sales at current prices (R million)

Month	2010	2011	2012	2013	2014	2015 1/	2016 1/
Jan	19 185,1	25 341,3	28 079,4	28 977,1	32 608,8	27 681,7	27 269,7
Feb	20 408,4	27 573,2	29 335,5	30 361,5	35 488,2	30 394,0	
Mar	23 860,1	31 547,4	30 912,0	34 761,4	35 172,2	34 525,1	
Apr	23 551,4	27 370,2	26 772,5	31 865,2	31 647,7	32 230,4	
May	25 535,2	27 870,5	31 257,0	30 402,1	30 932,4	32 458,4	
Jun	25 882,9	33 940,1	33 958,2	35 088,5	31 630,8	35 516,1	
Jul	25 588,6	27 947,7	30 899,0	32 847,9	31 517,7	30 434,2	
Aug	25 897,8	30 300,9	31 402,3	35 523,4	32 124,1	31 351,7	
Sep	27 994,7	35 700,1	30 367,0	34 731,0	35 345,8	33 403,2	
Oct	27 535,5	33 393,7	28 258,6	34 544,7	34 101,5	33 207,1	
Nov	27 114,9	35 268,1	29 921,3	34 122,6	32 274,1	31 183,6	
Dec	27 737,9	34 027,5	32 954,5	34 452,5	33 434,3	34 333,9	
Total	300 292,5	370 280,7	364 117,3	397 677,9	396 277,6	386 719,4	

1/ Preliminary.

Table 9 – Year-on-year percentage change in mineral sales at current prices

Month	2011	2012	2013	2014	2015	2016	2016 year-to-date
Jan	32,1	10,8	3,2	12,5	-15,1	-1,5	-1,5
Feb	35,1	6,4	3,5	16,9	-14,4		
Mar	32,2	-2,0	12,5	1,2	-1,8		
Apr	16,2	-2,2	19,0	-0,7	1,8		
May	9,1	12,2	-2,7	1,7	4,9		
Jun	31,1	0,1	3,3	-9,9	12,3		
Jul	9,2	10,6	6,3	-4,0	-3,4		
Aug	17,0	3,6	13,1	-9,6	-2,4		
Sep	27,5	-14,9	14,4	1,8	-5,5		
Oct	21,3	-15,4	22,2	-1,3	-2,6		
Nov	30,1	-15,2	14,0	-5,4	-3,4		
Dec	22,7	-3,2	4,5	-3,0	2,7		
Total	23,3	-1,7	9,2	-0,4	-2,4		

Table 10 – Seasonally adjusted total mineral sales at current prices

Month	R million				Month-on-month % change			
	2013	2014	2015	2016	2013	2014	2015	2016
Jan	31 861,7	36 257,7	30 416,0	31 143,0	-0,6	6,7	-6,6	-3,9
Feb	32 065,1	37 326,6	31 893,5		0,6	2,9	4,9	
Mar	33 555,5	33 423,0	33 357,6		4,6	-10,5	4,6	
Apr	33 183,6	33 065,7	32 651,9		-1,1	-1,1	-2,1	
May	30 981,3	31 102,5	33 888,7		-6,6	-5,9	3,8	
Jun	32 634,4	29 758,6	33 223,5		5,3	-4,3	-2,0	
Jul	33 932,1	31 758,6	31 020,6		4,0	6,7	-6,6	
Aug	34 481,8	32 451,4	31 253,7		1,6	2,2	0,8	
Sep	33 225,6	33 655,2	31 834,9		-3,6	3,7	1,9	
Oct	33 616,8	33 503,6	32 219,8		1,2	-0,5	1,2	
Nov	34 210,2	32 193,2	31 556,1		1,8	-3,9	-2,1	
Dec	33 986,7	32 581,1	32 399,8		-0,7	1,2	2,7	

Table 11 – Mineral sales at current prices by mineral group and mineral (R million) 1/

Mineral group and mineral	Aug-15	Sep-15	Oct-15	Nov-15	Dec-15	Jan-16
Gold	4 980,5	4 966,6	6 854,9	5 476,5	6 270,2	4 743,3
Iron ore	2 668,2	3 446,9	2 381,9	2 775,5	3 070,2	2 757,5
Chromium ore	1 635,9	1 550,4	1 136,5	1 365,6	1 108,0	775,5
Copper	287,9	482,2	431,3	426,1	513,6	350,8
Manganese ore	959,2	1 198,9	1 142,2	636,4	947,6	683,9
PGMs	7 865,8	8 677,4	7 361,5	8 130,9	8 112,2	5 821,1
Nickel	503,0	674,1	894,9	577,3	741,8	675,4
Other metallic minerals	1 178,3	845,7	505,8	846,4	1 009,6	446,1
Coal	8 692,8	8 570,7	9 166,6	8 950,2	9 761,9	8 475,2
Building materials	884,0	934,8	960,8	975,0	646,3	677,7
Other non-metallic minerals	1 696,0	2 055,6	2 370,7	1 023,8	2 152,4	1 863,2
Total	31 351,7	33 403,2	33 207,1	31 183,6	34 333,9	27 269,7

1/ All values in this table are preliminary.

Table 12 – Year-on-year percentage change in mineral sales at current prices by mineral group and mineral

Mineral group and mineral	Aug-15	Sep-15	Oct-15	Nov-15	Dec-15	Jan-16
Gold	-5,7	-8,4	17,2	18,7	18,2	31,3
Iron ore	-17,3	-22,2	-48,7	-39,3	-25,7	-37,3
Chromium ore	42,2	36,9	1,1	26,4	-2,7	-30,8
Copper	-46,1	-10,4	-6,0	-10,1	34,8	-0,7
Manganese ore	-31,3	-10,8	-9,2	-55,7	-41,7	-60,0
PGMs	27,1	17,6	10,4	16,8	-0,3	12,4
Nickel	-47,3	-4,3	35,5	10,2	-22,2	4,1
Other metallic minerals	22,0	-30,4	-35,4	-17,1	11,9	-22,6
Coal	-10,8	-9,2	1,5	1,8	7,4	4,6
Building materials	3,2	3,4	-1,8	13,2	-1,0	-3,1
Other non-metallic minerals	-7,0	-27,6	-10,3	-47,2	90,8	45,2
Total	-2,4	-5,5	-2,6	-3,4	2,7	-1,5

Table 13 – Contribution of each mineral group and mineral to the year-on-year percentage change in mineral sales at current prices (percentage points)

Mineral group and mineral	Aug-15	Sep-15	Oct-15	Nov-15	Dec-15	Jan-16
Gold	-0,9	-1,3	2,9	2,7	2,9	4,1
Iron ore	-1,7	-2,8	-6,6	-5,6	-3,2	-5,9
Chromium ore	1,5	1,2	0,0	0,9	-0,1	-1,2
Copper	-0,8	-0,2	-0,1	-0,1	0,4	0,0
Manganese ore	-1,4	-0,4	-0,3	-2,5	-2,0	-3,7
PGMs	5,2	3,7	2,0	3,6	-0,1	2,3
Nickel	-1,4	-0,1	0,7	0,2	-0,6	0,1
Other metallic minerals	0,7	-1,0	-0,8	-0,5	0,3	-0,5
Coal	-3,3	-2,5	0,4	0,5	2,0	1,3
Building materials	0,1	0,1	-0,1	0,4	0,0	-0,1
Other non-metallic minerals	-0,4	-2,2	-0,8	-2,8	3,1	2,1
Total	-2,4	-5,5	-2,6	-3,4	2,7	-1,5

Survey information

Introduction	1	Statistics South Africa (Stats SA) publishes monthly mining production indices and mineral sales based on the information furnished by the Department of Mineral Resources (DMR). Data in this release are presented by mineral group and mineral.
	2	In accordance with international practice, the indices are usually re-based every five years to a new base year. The current base year of the index of the volume of mining production is 2010=100. Both actual and seasonally adjusted figures are presented.
	3	Due to mining production figures being available earlier than mineral sales figures, mining production indices are published one month earlier than mineral sales.
	4	The value of mineral sales is calculated, in general, on a free-on-rail/free-on-board basis.
	5	In order to improve timeliness, some information for the current month had to be estimated due to late response. These estimates will be revised in future statistical release(s) as soon as more up-to-date information is available.
Purpose of the survey	6	The monthly mining production and sales survey is conducted by the DMR, covering all mining establishments operating in the South African economy. The results of this survey are used to calculate the volume of mining production indices in order to estimate the gross domestic product (GDP) and its components, which in turn are used to develop and monitor government policy.
Scope of the survey	7	This survey covers mining establishments conducting activities regarding the extracting, dressing and beneficiating of minerals occurring naturally, for example solids such as coal and ores.
Classification	8	The 1993 edition of the <i>Standard Industrial Classification of all Economic Activities</i> (SIC), Fifth Edition, Report No. 09-90-02, was used to classify the statistical units in the survey. The SIC is based on the 1990 <i>International Standard Industrial Classification of all Economic Activities</i> (ISIC) with suitable adaptations for local conditions. Each statistical unit is classified to an industry which reflects the predominant activity of the establishment. Statistics in this publication are presented by mineral group and mineral.
Statistical unit	9	The statistical unit for the collection of information is the mining establishment. An establishment is the smallest economic unit that functions as a separate entity.
Related publications	10	Users may also wish to refer to the following publications which are available from Stats SA – <ul style="list-style-type: none"> • <i>Bulletin of Statistics</i> issued quarterly; and • <i>South African Statistics</i> issued annually.
Rounding-off of figures	11	The figures in the tables have, where necessary, been rounded off to the nearest digit shown. There may, therefore, be slight discrepancies between the sums of the constituent items and the totals shown.
Historical data and past publications	12	Historical mining data and past publications are available on the Stats SA website. Click on the following link (Time series data) or (Past publications) to access the data and releases electronically.

Technical notes

- | | | |
|---|-----------|---|
| Index of the volume of mining production | 1 | The index of the volume of mining production, also known as the production index, is a statistical measure of the change in the volume of production. The production index of a mineral group is the ratio between the volume of production of a mineral group in a given period and the volume of production of the same mineral group in the base period. The current base period is 2010. The production in the base period is set at 100. |
| Index weighting | 2 | The weight of a mineral group is the ratio of the sales of a mineral group to the total sales of the mining industry. The weight of a mineral group reflects the importance of the mineral group in the total mining industry. The weights change over time due to quality improvements and changes in relative prices. New weights will be calculated annually. |
| | 3 | The weights, which are used to aggregate minerals to mineral groups and mineral groups to total mining, are based on the value of sales derived from detailed information for a specific year supplied by the Department of Mineral Resources (DMR). The latest weights are based on 2012 data. |
| Seasonal adjustment | 4 | Seasonally adjusted estimates are generated each month using the X-12-ARIMA Seasonal Adjustment Program developed by the US Bureau of the Census, 1968. Seasonal adjustment is a means of removing the estimated effects of normal seasonal variation from the series so that the effects of other influences on the series can be recognised more clearly. Seasonal adjustment does not aim to remove irregular or non-seasonal influences which may be present in any particular month. |
| | 5 | Influences that are volatile or unsystematic can still make it difficult to interpret the movement of the series even after adjustment for seasonal variations. This means the month-to-month movements of seasonally adjusted estimates may not be reliable indicators of trend behaviour. The X-12-ARIMA procedure for mining production and sales is described in more detail on the Stats SA website at:
http://www.statssa.gov.za/publications/P2041/Seasonal_adjustment_X12.pdf |
| Trend cycle | 6 | The trend is the long-term pattern or movement of a time series. The X-12-ARIMA Seasonal Adjustment Program is used for smoothing seasonally adjusted estimates to estimate the underlying trend cycle. |
| Reliability of estimates | 7 | Figures for the latest 2 calendar years are preliminary. |
| Month-on-month percentage change | 8 | The month-on-month percentage change in a variable for any given month is the change between that month and the previous month, expressed as a percentage of the latter. |
| Year-on-year percentage change | 9 | The year-on-year percentage change in a variable for any given period is the change between that period and the corresponding period of the previous year, expressed as a percentage of the latter. |
| Index contribution (percentage points) | 10 | The contribution (percentage points) of a mineral group or mineral to the percentage change in the total mining production for a given period is calculated by multiplying the difference in the index for each mineral group or mineral by the weight of the mineral group or mineral and then dividing by the previous period's total index. |
| Sales contribution (percentage points) | 11 | The contribution (percentage points) to the percentage change in total sales for a given period is calculated by multiplying the percentage change of each mineral group or mineral with its percentage contribution to total mineral sales of the previous period, divided by 100. |

Glossary

Free-on-rail	Free-on-rail relates to goods sold on the local market where no railage or road transport costs are involved.																
Free-on-board	Free-on-board relates to goods destined for the export market. Railage, road transport and docking charges are involved but no charges are made for transport by sea.																
Industry	An industry consists of a group of establishments engaged in the same or similar kinds of economic activity. Industries are defined in the <i>System of National Accounts (SNA)</i> in the same way as in the <i>Standard Industrial Classification of all Economic Activities (SIC)</i> , Fifth Edition of January 1993.																
PGMs – Platinum group metals	Platinum group metals include platinum, iridium, osmium, palladium, rhodium, ruthenium and osmium.																
Sales	Sales are the total value of sales of primary minerals at the first point of saleability by the mining establishment.																
Symbols and abbreviations	<table> <tr> <td>DMR</td> <td>Department of Mineral Resources</td> </tr> <tr> <td>GDP</td> <td>Gross domestic product</td> </tr> <tr> <td>ISIC</td> <td>International Standard Industrial Classification</td> </tr> <tr> <td>PGMs</td> <td>Platinum group metals</td> </tr> <tr> <td>SIC</td> <td>Standard Industrial Classification of all Economic Activities</td> </tr> <tr> <td>SNA</td> <td>System of National Accounts</td> </tr> <tr> <td>Stats SA</td> <td>Statistics South Africa</td> </tr> <tr> <td>*</td> <td>Revised</td> </tr> </table>	DMR	Department of Mineral Resources	GDP	Gross domestic product	ISIC	International Standard Industrial Classification	PGMs	Platinum group metals	SIC	Standard Industrial Classification of all Economic Activities	SNA	System of National Accounts	Stats SA	Statistics South Africa	*	Revised
DMR	Department of Mineral Resources																
GDP	Gross domestic product																
ISIC	International Standard Industrial Classification																
PGMs	Platinum group metals																
SIC	Standard Industrial Classification of all Economic Activities																
SNA	System of National Accounts																
Stats SA	Statistics South Africa																
*	Revised																

Technical enquiries

JP Terblanche	Telephone number: (012) 310 2965 Email: juan-pierret@statssa.gov.za
Martin Kohler	Telephone number: (012) 444 3734 Email: martin.kohler@dmr.gov.za

General information

Stats SA publishes approximately 300 different statistical releases each year. It is not economically viable to produce them in more than one of South Africa's eleven official languages. Since the releases are used extensively, not only locally but also by international economic and social-scientific communities, Stats SA releases are published in English only.

Stats SA has copyright on this publication. Users may apply the information as they wish, provided that they acknowledge Stats SA as the source of the basic data wherever they process, apply, utilise, publish or distribute the data and also that they specify that the relevant application and analysis (where applicable) result from their own processing of the data.

Advance release calendar

An advance release calendar is disseminated on www.statssa.gov.za

Stats SA products

A complete set of Stats SA publications is available at the Stats SA Library and the following libraries:

National Library of South Africa, Pretoria Division
National Library of South Africa, Cape Town Division
Natal Society Library, Pietermaritzburg
Library of Parliament, Cape Town
Bloemfontein Public Library
Johannesburg Public Library
Eastern Cape Library Services, King William's Town
Central Regional Library, Polokwane
Central Reference Library, Mbombela
Central Reference Collection, Kimberley
Central Reference Library, Mmabatho

Stats SA also provides a subscription service.

Electronic services

A large range of data is available via online services. For more detail about our electronic services, contact Stats SA's user information service at (012) 310 8600.

You can visit us on the Internet at: www.statssa.gov.za

General enquiries

User information services	Telephone number: (012) 310 8600 Email address: info@statssa.gov.za
Orders/subscription services	Telephone number: (012) 310 8044 Email address: magdaj@statssa.gov.za
Postal address	Private Bag X44, Pretoria, 0001

Produced by Stats SA