

STATISTICAL RELEASE
P2041

Mining: Production and sales
(Preliminary)

December 2017

Embargoed until:
8 February 2018
11:30

ENQUIRIES:
Juan-Pierre Terblanche
012 310 2965

FORTHCOMING ISSUE:
January 2018

EXPECTED RELEASE DATE:
15 March 2018

www.statssa.gov.za
info@statssa.gov.za
T +27 12 310 8911
F +27 12 310 8500

Private Bag X44, Pretoria, 0001, South Africa
ISibalo House, Koch Street, Salvokop, Pretoria, 0002

Contents

Production: results for December 2017	2
Table A – Key growth rates in the volume of mining production.....	2
Table B – Seasonally adjusted index of the volume of mining production for the latest three months by mineral group and mineral (Base: 2015=100).....	2
Figure 1 – Volume of mining production (Base: 2015=100)	3
Figure 2 – Volume of mining production (Base: 2015=100): year-on-year percentage change.....	3
Sales: results for December 2017	4
Table C – Key growth rates in mineral sales at current prices	4
Tables	5
Table 1 – Index of the volume of mining production (Base: 2015=100)	5
Table 2 – Year-on-year percentage change in the volume of mining production	5
Table 3 – Seasonally adjusted volume of total mining production.....	5
Table 4 – Index of the volume of mining production by mineral group and mineral (Base: 2015=100)	6
Table 5 – Seasonally adjusted index of the volume of mining production by mineral group and mineral (Base: 2015=100).....	6
Table 6 – Year-on-year percentage change in the volume of mining production by mineral group and mineral	7
Table 7 – Contribution of each mineral group and mineral to the year-on-year percentage change in the volume of mining production (percentage points)	7
Table 8 – Mineral sales at current prices (R million).....	8
Table 9 – Year-on-year percentage change in mineral sales at current prices	8
Table 10 – Seasonally adjusted total mineral sales at current prices.....	8
Table 11 – Mineral sales at current prices by mineral group and mineral (R million).....	9
Table 12 – Year-on-year percentage change in mineral sales at current prices by mineral group and mineral	9
Table 13 – Contribution of each mineral group and mineral to the year-on-year percentage change in mineral sales at current prices (percentage points)	9
Survey information	10
Technical notes	11
Glossary	12
Technical enquiries	12
General information	13

Production: results for December 2017

Table A – Key growth rates in the volume of mining production

	Jul-17	Aug-17	Sep-17	Oct-17	Nov-17	Dec-17
Year-on-year % change, unadjusted	2,8	8,7	-0,8	5,3	6,5	0,1
Month-on-month % change, seasonally adjusted	1,9	5,9	-6,9	3,0	-1,1	-3,1
3-month % change, seasonally adjusted ¹	0,2	0,9	2,7	2,7	-1,1	-1,7

¹ Percentage change between the previous three months and the three months ending in the month indicated.

Mining production increased by 0,1% year-on-year in December 2017. The main positive contributor was iron ore (15,9% and contributing 2,2 percentage points). Gold (-12,4% and contributing -2,0 percentage points) and coal (-5,5% and contributing -1,3 percentage points) were significant negative contributors – see Tables 6 and 7.

Total mining production was 4,0% higher in 2017 compared with 2016. The 4,0% increase in annual mining production followed a decrease of 4,0% in 2016 and an increase of 3,2% in 2015 – see Table 2.

Seasonally adjusted mining production decreased by 3,1% in December 2017 compared with November 2017. This followed month-on-month changes of -1,1% in November 2017 and 3,0% in October 2017.

Table B – Seasonally adjusted index of the volume of mining production for the latest three months by mineral group and mineral (Base: 2015=100)

Mineral group and mineral	Weight	Jul – Sep 2017	Oct – Dec 2017	% change between Jul – Sep 2017 and Oct – Dec 2017	Contribution (% points) to the % change in total mining production
Gold	15,49	98,8	87,5	-11,4	-1,7
Iron ore	13,61	101,2	108,9	7,6	1,0
Chromium ore	2,96	109,5	105,9	-3,3	-0,1
Copper ¹	1,24	93,9	87,1	-7,2	-0,1
Manganese ore ²	3,27	124,3	133,5	7,4	0,3
PGMs	23,27	95,6	92,9	-2,8	-0,6
Nickel ²	1,85	89,6	84,9	-5,2	-0,1
Other metallic minerals ¹	2,57	104,4	103,1	-1,2	0,0
Diamonds ²	3,89	129,9	115,6	-11,0	-0,5
Coal	24,69	101,3	101,0	-0,3	-0,1
Building materials	1,81	107,2	115,8	8,0	0,1
Other non-metallic minerals ¹	5,35	103,4	106,5	3,0	0,2
Total	100,00	101,7	100,0	-1,7	-1,7

¹ Adjusted for calendar effects only. See notes 4, 5 and 6 on page 11.

² Unadjusted.

Seasonally adjusted mining production decreased by 1,7% in the fourth quarter 2017 compared with the previous quarter. Gold (contributing -1,7 percentage points) was the largest negative contributor – see Table B.

Figure 1 – Volume of mining production (Base: 2015=100)

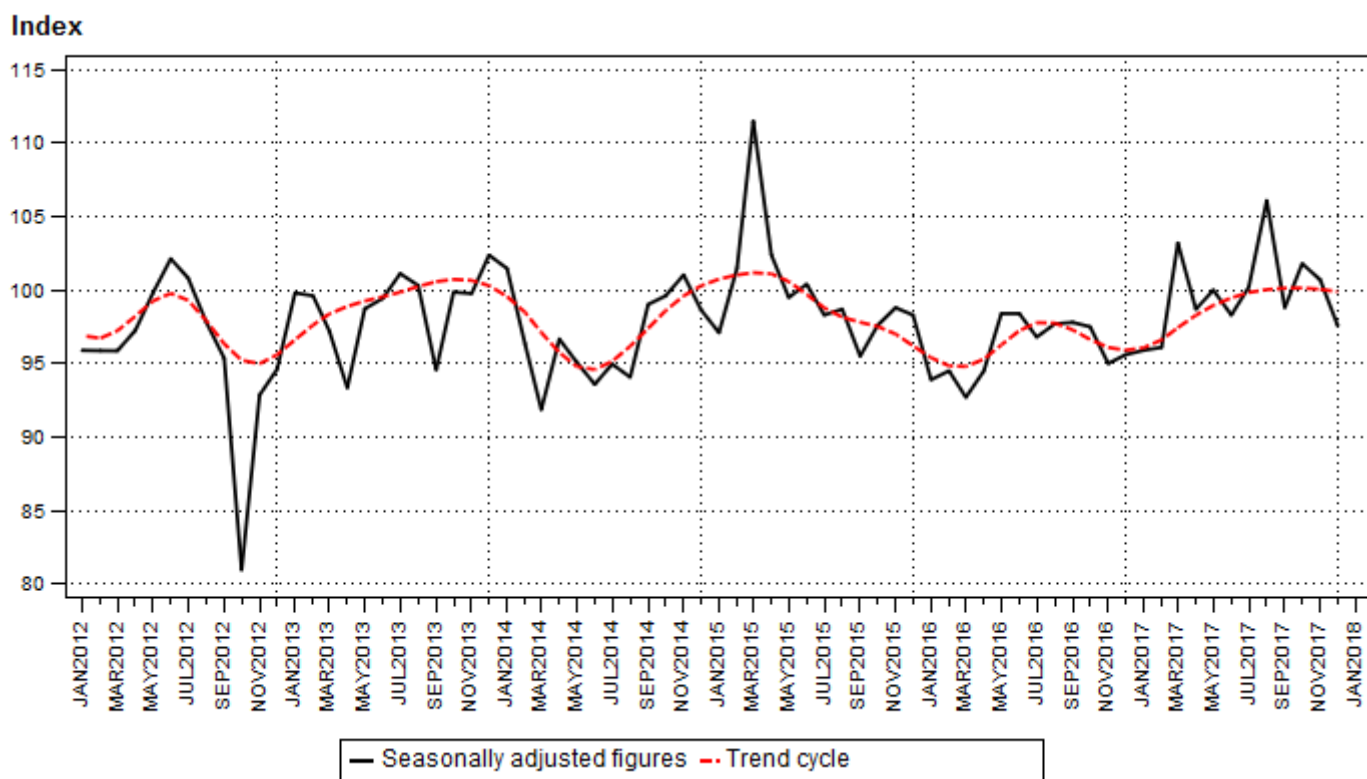
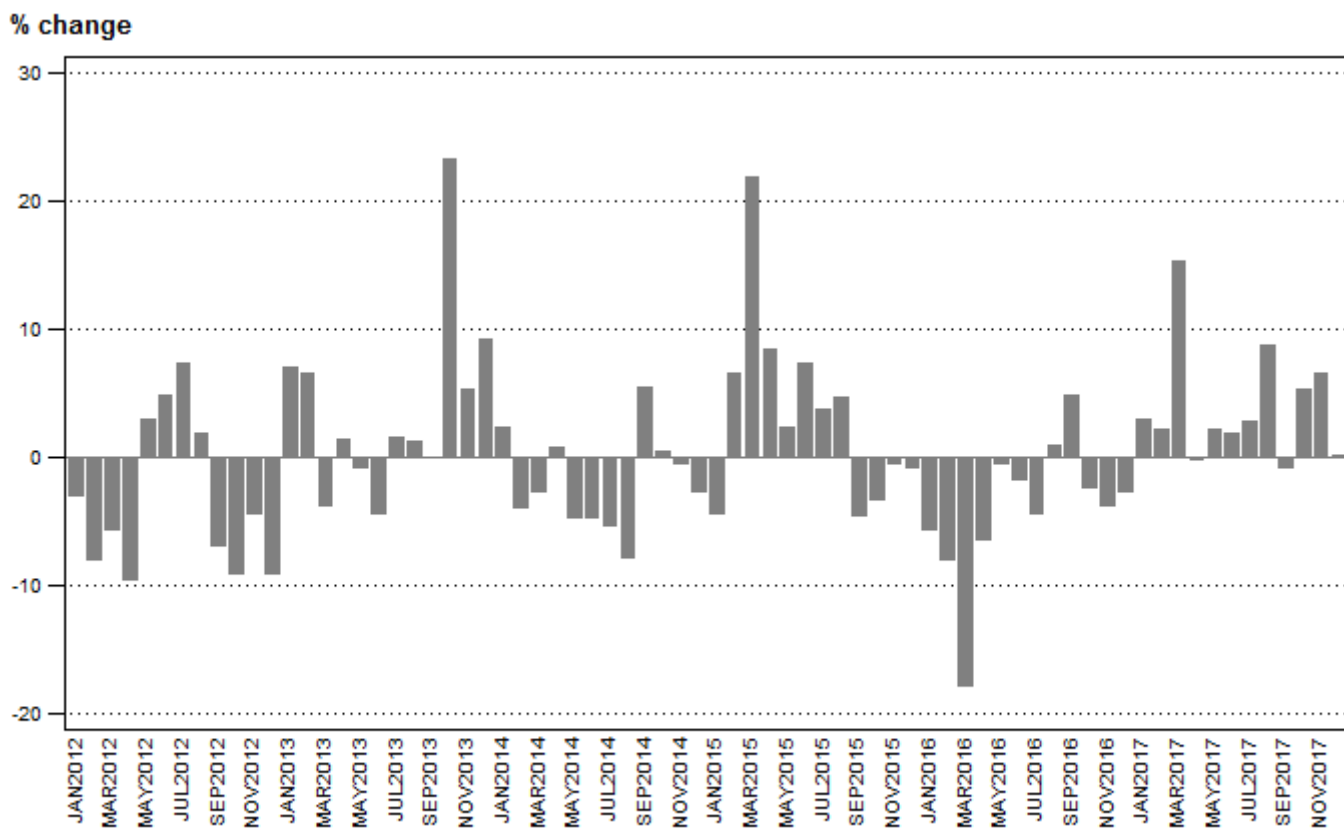


Figure 2 – Volume of mining production (Base: 2015=100): year-on-year percentage change



Sales: results for December 2017**Table C – Key growth rates in mineral sales at current prices**

	Jul-17	Aug-17	Sep-17	Oct-17	Nov-17	Dec-17
Year-on-year % change, unadjusted	17,9	19,3	6,3	14,5	6,7	-1,4
Month-on-month % change, seasonally adjusted	2,6	5,2	0,3	5,4	-3,4	-1,1
3-month % change, seasonally adjusted ¹	1,7	3,2	6,4	8,8	7,1	4,6

¹ Percentage change between the previous three months and the three months ending in the month indicated.

Mineral sales decreased by 1,4% year-on-year in December 2017. The main negative contributors were:

- chromium ore (-44,1% and contributing -3,4 percentage points);
- iron ore (-15,5% and contributing -1,9 percentage points); and
- manganese ore (-14,1% and contributing -1,3 percentage points) – see Tables 12 and 13.

Total mineral sales were 8,5% higher in 2017 compared with 2016. The 8,5% increase in annual mineral sales followed an increase of 9,4% in 2016 and a decrease of 2,2% in 2015 – see Table 9.

Seasonally adjusted mineral sales at current prices decreased by 1,1% in December 2017 compared with November 2017. This followed month-on-month changes of -3,4% in November 2017 and 5,4% in October 2017.

Risenga Maluleke
Statistician-General

Tables

Table 1 – Index of the volume of mining production (Base: 2015=100)

Month	2011	2012	2013	2014	2015	2016 ¹	2017 ¹
Jan	86,0	83,5	89,4	91,5	87,6	82,7	85,1
Feb	89,8	82,6	88,0	84,6	90,1	83,0	84,8
Mar	101,8	96,1	92,5	90,1	109,7	90,2	104,0
Apr	100,1	90,6	91,9	92,6	100,4	94,0	93,9
May	99,2	102,1	101,3	96,6	98,8	98,3	100,5
Jun	102,7	107,7	103,0	98,2	105,4	103,6	105,5
Jul	96,2	103,3	104,8	99,2	102,9	98,5	101,3
Aug	102,3	104,1	105,4	97,2	101,8	102,7	111,6
Sep	105,6	98,4	98,4	103,7	99,0	103,8	103,0
Oct	92,9	84,4	104,0	104,4	101,1	98,7	103,9
Nov	103,5	99,0	104,2	103,7	103,3	99,4	105,9
Dec	104,2	94,8	103,5	100,7	100,0	97,4	97,5
Year	98,7	95,6	98,9	96,9	100,0	96,0	99,8

¹ Preliminary.

Table 2 – Year-on-year percentage change in the volume of mining production

Month	2012	2013	2014	2015	2016	2017	2017 year-to-date
Jan	-2,9	7,0	2,3	-4,3	-5,6	2,9	2,9
Feb	-8,0	6,5	-3,8	6,5	-7,9	2,2	2,5
Mar	-5,6	-3,7	-2,6	21,8	-17,8	15,3	7,0
Apr	-9,5	1,4	0,8	8,4	-6,4	-0,1	5,1
May	3,0	-0,9	-4,6	2,3	-0,5	2,2	4,6
Jun	4,8	-4,3	-4,7	7,4	-1,7	1,8	3,9
Jul	7,5	1,4	-5,4	3,8	-4,3	2,8	3,8
Aug	1,8	1,2	-7,8	4,8	0,9	8,7	4,5
Sep	-6,9	0,0	5,5	-4,6	4,8	-0,8	3,9
Oct	-9,1	23,2	0,4	-3,2	-2,4	5,3	4,0
Nov	-4,4	5,3	-0,5	-0,4	-3,8	6,5	4,3
Dec	-9,1	9,2	-2,8	-0,7	-2,6	0,1	4,0
Year	-3,1	3,4	-2,0	3,2	-4,0	4,0	

Table 3 – Seasonally adjusted volume of total mining production

Month	Index (Base: 2015=100)				Month-on-month % change			
	2014	2015	2016	2017	2014	2015	2016	2017
Jan	101,4	97,1	93,9	95,9	-0,9	-1,3	-4,5	0,3
Feb	96,2	101,5	94,5	96,1	-5,1	4,5	0,6	0,2
Mar	92,4	111,5	92,7	103,2	-4,0	9,9	-1,9	7,4
Apr	96,6	102,4	94,5	98,7	4,5	-8,2	1,9	-4,4
May	95,1	99,5	98,4	100,0	-1,6	-2,8	4,1	1,3
Jun	93,6	100,4	98,4	98,3	-1,6	0,9	0,0	-1,7
Jul	95,0	98,3	96,8	100,2	1,5	-2,1	-1,6	1,9
Aug	93,9	98,7	97,7	106,1	-1,2	0,4	0,9	5,9
Sep	99,1	95,5	97,8	98,8	5,5	-3,2	0,1	-6,9
Oct	99,6	97,6	97,5	101,8	0,5	2,2	-0,3	3,0
Nov	101,0	98,8	95,0	100,7	1,4	1,2	-2,6	-1,1
Dec	98,4	98,3	95,6	97,6	-2,6	-0,5	0,6	-3,1

Table 4 – Index of the volume of mining production by mineral group and mineral (Base: 2015=100) ¹

Mineral group and mineral	Weight	Jul-17	Aug-17	Sep-17	Oct-17	Nov-17	Dec-17
Gold	15,49	102,7	102,6	105,1	99,2	90,3	87,4
Iron ore	13,61	98,1	116,2	96,5	114,4	107,9	115,7
Chromium ore	2,96	114,3	117,8	112,3	114,2	103,6	98,9
Copper	1,24	88,3	88,3	107,2	102,6	75,4	85,3
Manganese ore	3,27	111,9	129,4	131,6	133,0	131,4	136,0
PGMs	23,27	90,8	112,6	100,7	89,6	110,2	101,3
Nickel	1,85	81,8	92,1	95,0	73,9	90,6	90,3
Other metallic minerals	2,57	94,2	115,3	106,1	100,7	104,9	106,1
Diamonds	3,89	146,0	145,9	97,8	127,7	123,0	96,2
Coal	24,69	106,1	106,7	102,1	106,8	104,8	85,4
Building materials	1,81	116,3	117,4	112,5	114,2	118,4	98,0
Other non-metallic minerals	5,35	90,0	113,6	106,8	107,3	114,1	97,1
Total	100,00	101,3	111,6	103,0	103,9	105,9	97,5

¹ All index values in this table are preliminary.

Table 5 – Seasonally adjusted index of the volume of mining production by mineral group and mineral (Base: 2015=100)

Mineral group and mineral	Jul-17	Aug-17	Sep-17	Oct-17	Nov-17	Dec-17	Month-on-month % change
Gold	101,5	99,2	95,6	94,5	83,6	84,5	1,1
Iron ore	94,9	114,4	94,4	111,0	105,2	110,5	5,0
Chromium ore	111,1	112,5	105,0	108,2	100,7	108,7	7,9
Copper ¹	86,7	86,7	108,4	101,0	76,6	83,7	9,3
Manganese ore ²	111,9	129,4	131,6	133,0	131,4	136,0	3,5
PGMs	94,3	100,2	92,4	91,5	99,2	88,0	-11,3
Nickel ²	81,8	92,1	95,0	73,9	90,6	90,3	-0,3
Other metallic minerals ¹	92,3	113,4	107,5	98,8	106,3	104,2	-2,0
Diamonds ²	146,0	145,9	97,8	127,7	123,0	96,2	-21,8
Coal	101,7	101,4	100,8	102,6	102,1	98,4	-3,6
Building materials	109,0	108,8	103,8	100,7	101,2	145,5	43,8
Other non-metallic minerals ¹	92,2	110,1	107,8	110,3	110,0	99,2	-9,8
Total	100,2	106,1	98,8	101,8	100,7	97,6	-3,1

¹ Adjusted for calendar effects only. See notes 4, 5 and 6 on page 11.

² Unadjusted.

Table 6 – Year-on-year percentage change in the volume of mining production by mineral group and mineral

Mineral group and mineral	Jul-17	Aug-17	Sep-17	Oct-17	Nov-17	Dec-17
Gold	5,0	7,2	1,7	-0,1	-10,4	-12,4
Iron ore	-5,0	8,9	-7,5	17,9	20,7	15,9
Chromium ore	18,8	19,6	1,8	9,8	2,6	10,9
Copper	26,5	-19,9	-2,7	-2,4	-27,0	-16,3
Manganese ore	20,2	23,8	35,0	20,7	2,5	10,1
PGMs	-3,7	2,2	-9,4	0,7	12,4	-1,4
Nickel	5,1	4,2	11,6	-15,9	16,2	11,2
Other metallic minerals	-1,2	20,9	5,7	-5,4	9,0	-1,5
Diamonds	16,6	29,8	-7,0	-6,9	-3,4	4,0
Coal	1,5	4,5	-0,4	6,2	6,7	-5,5
Building materials	6,8	8,4	-3,3	-1,3	-4,4	28,6
Other non-metallic minerals	18,7	39,6	36,1	19,8	22,6	5,5
Total	2,8	8,7	-0,8	5,3	6,5	0,1

Table 7 – Contribution of each mineral group and mineral to the year-on-year percentage change in the volume of mining production (percentage points)

Mineral group and mineral	Jul-17	Aug-17	Sep-17	Oct-17	Nov-17	Dec-17
Gold	0,8	1,0	0,3	0,0	-1,6	-2,0
Iron ore	-0,7	1,3	-1,0	2,4	2,5	2,2
Chromium ore	0,5	0,6	0,1	0,3	0,1	0,3
Copper	0,2	-0,3	0,0	0,0	-0,3	-0,2
Manganese ore	0,6	0,8	1,1	0,8	0,1	0,4
PGMs	-0,8	0,5	-2,4	0,1	2,9	-0,3
Nickel	0,1	0,1	0,2	-0,3	0,2	0,2
Other metallic minerals	0,0	0,5	0,1	-0,1	0,2	0,0
Diamonds	0,8	1,3	-0,3	-0,4	-0,2	0,1
Coal	0,4	1,1	-0,1	1,6	1,6	-1,3
Building materials	0,1	0,2	-0,1	0,0	-0,1	0,4
Other non-metallic minerals	0,8	1,7	1,5	1,0	1,1	0,3
Total	2,8	8,7	-0,8	5,3	6,5	0,1

Table 8 – Mineral sales at current prices (R million)

Month	2011	2012	2013	2014	2015	2016 ¹	2017 ¹
Jan	25 341,3	28 079,4	28 977,1	32 608,8	27 714,6	26 969,1	33 010,5
Feb	27 573,2	29 335,5	30 361,5	35 488,2	30 712,0	30 933,5	34 209,5
Mar	31 547,4	30 912,0	34 761,4	35 172,2	34 751,6	34 144,8	39 231,0
Apr	27 370,2	26 772,5	31 865,2	31 647,7	32 675,8	30 843,8	34 240,7
May	27 870,5	31 257,0	30 402,1	30 932,4	32 812,7	37 994,3	35 931,9
Jun	33 940,1	33 958,2	35 088,5	31 630,8	35 668,4	41 023,0	39 504,3
Jul	27 947,7	30 899,0	32 847,9	31 517,7	30 620,3	30 372,3	35 798,8
Aug	30 300,9	31 402,3	35 523,4	32 124,1	31 313,7	34 052,2	40 613,9
Sep	35 700,1	30 367,0	34 731,0	35 345,8	33 416,7	39 162,7	41 647,5
Oct	33 393,7	28 258,6	34 544,7	34 101,5	33 004,9	37 222,0	42 620,3
Nov	35 268,1	29 921,3	34 122,6	32 274,1	30 901,0	39 519,9	42 178,5
Dec	34 027,5	32 954,5	34 452,5	33 434,3	34 055,0	41 765,7	41 199,1
Total	370 280,7	364 117,3	397 677,9	396 277,6	387 646,7	424 003,3	460 186,0

¹ Preliminary.**Table 9 – Year-on-year percentage change in mineral sales at current prices**

Month	2012	2013	2014	2015	2016	2017	2017 year-to-date
Jan	10,8	3,2	12,5	-15,0	-2,7	22,4	22,4
Feb	6,4	3,5	16,9	-13,5	0,7	10,6	16,1
Mar	-2,0	12,5	1,2	-1,2	-1,7	14,9	15,6
Apr	-2,2	19,0	-0,7	3,2	-5,6	11,0	14,5
May	12,2	-2,7	1,7	6,1	15,8	-5,4	9,8
Jun	0,1	3,3	-9,9	12,8	15,0	-3,7	7,0
Jul	10,6	6,3	-4,0	-2,8	-0,8	17,9	8,5
Aug	3,6	13,1	-9,6	-2,5	8,7	19,3	9,8
Sep	-14,9	14,4	1,8	-5,5	17,2	6,3	9,4
Oct	-15,4	22,2	-1,3	-3,2	12,8	14,5	9,9
Nov	-15,2	14,0	-5,4	-4,3	27,9	6,7	9,6
Dec	-3,2	4,5	-3,0	1,9	22,6	-1,4	8,5
Total	-1,7	9,2	-0,4	-2,2	9,4	8,5	

Table 10 – Seasonally adjusted total mineral sales at current prices

Month	R million				Month-on-month % change			
	2014	2015	2016	2017	2014	2015	2016	2017
Jan	36 132,2	30 590,6	31 024,1	37 686,8	7,8	-5,2	-2,1	-3,3
Feb	37 463,1	32 369,9	32 666,4	36 051,1	3,7	5,8	5,3	-4,3
Mar	33 742,3	33 649,3	31 870,8	37 098,2	-9,9	4,0	-2,4	2,9
Apr	33 458,0	33 389,3	32 958,4	36 195,5	-0,8	-0,8	3,4	-2,4
May	31 047,8	34 174,1	39 172,6	36 975,6	-7,2	2,4	18,9	2,2
Jun	29 760,0	33 570,7	37 462,5	36 656,5	-4,1	-1,8	-4,4	-0,9
Jul	31 895,5	31 472,4	32 287,6	37 610,5	7,2	-6,3	-13,8	2,6
Aug	32 742,1	31 335,9	34 297,9	39 559,1	2,7	-0,4	6,2	5,2
Sep	33 627,2	31 782,5	36 285,8	39 672,1	2,7	1,4	5,8	0,3
Oct	33 141,9	31 688,0	36 485,1	41 818,7	-1,4	-0,3	0,5	5,4
Nov	31 782,4	30 708,3	39 303,7	40 395,5	-4,1	-3,1	7,7	-3,4
Dec	32 280,9	31 688,5	38 988,1	39 956,0	1,6	3,2	-0,8	-1,1

Table 11 – Mineral sales at current prices by mineral group and mineral (R million) ¹

Mineral group and mineral	Jul-17	Aug-17	Sep-17	Oct-17	Nov-17	Dec-17
Gold	6 110,0	6 675,5	6 142,4	7 454,8	6 041,0	5 267,1
Iron ore	3 695,3	4 571,7	4 369,1	4 491,8	3 961,8	4 228,3
Chromium ore	1 678,0	1 818,2	2 109,0	2 058,6	1 759,7	1 803,6
Copper	292,7	501,7	526,9	504,1	381,5	454,3
Manganese ore	2 777,6	2 378,0	3 139,3	2 974,8	3 217,5	3 400,8
PGMs	6 824,8	9 282,8	8 831,9	7 772,8	9 914,6	9 103,8
Nickel	357,8	542,6	459,2	685,7	505,5	646,3
Other metallic minerals	1 071,6	488,9	1 207,7	913,5	878,0	1 227,1
Coal	10 965,5	11 309,9	10 915,4	12 355,0	12 272,7	11 847,5
Building materials	1 046,2	1 072,7	1 069,8	1 070,3	1 084,8	913,8
Other non-metallic minerals	979,4	1 971,9	2 876,8	2 338,9	2 161,3	2 306,4
Total	35 798,8	40 613,9	41 647,5	42 620,3	42 178,5	41 199,1

¹ All values in this table are preliminary.

Table 12 – Year-on-year percentage change in mineral sales at current prices by mineral group and mineral

Mineral group and mineral	Jul-17	Aug-17	Sep-17	Oct-17	Nov-17	Dec-17
Gold	-4,1	19,1	-18,0	18,6	-4,5	-6,0
Iron ore	0,3	13,9	40,7	41,3	-8,5	-15,5
Chromium ore	59,9	45,5	46,0	14,7	-16,8	-44,1
Copper	31,3	59,9	70,6	35,4	-10,6	140,8
Manganese ore	117,9	128,3	176,1	85,5	11,6	-14,1
PGMs	-1,2	13,2	-12,0	0,5	23,7	17,1
Nickel	-21,3	-17,2	-19,8	28,8	-20,3	-8,0
Other metallic minerals	106,2	-40,7	47,6	-3,6	-7,4	11,1
Coal	37,2	17,0	9,5	14,2	10,6	8,8
Building materials	9,0	9,8	6,3	6,8	1,4	27,3
Other non-metallic minerals	4,2	30,9	-12,3	-20,9	28,8	-11,2
Total	17,9	19,3	6,3	14,5	6,7	-1,4

Table 13 – Contribution of each mineral group and mineral to the year-on-year percentage change in mineral sales at current prices (percentage points)

Mineral group and mineral	Jul-17	Aug-17	Sep-17	Oct-17	Nov-17	Dec-17
Gold	-0,9	3,1	-3,4	3,1	-0,7	-0,8
Iron ore	0,0	1,6	3,2	3,5	-0,9	-1,9
Chromium ore	2,1	1,7	1,7	0,7	-0,9	-3,4
Copper	0,2	0,6	0,6	0,4	-0,1	0,6
Manganese ore	4,9	3,9	5,1	3,7	0,8	-1,3
PGMs	-0,3	3,2	-3,1	0,1	4,8	3,2
Nickel	-0,3	-0,3	-0,3	0,4	-0,3	-0,1
Other metallic minerals	1,8	-1,0	1,0	-0,1	-0,2	0,3
Coal	9,8	4,8	2,4	4,1	3,0	2,3
Building materials	0,3	0,3	0,2	0,2	0,0	0,5
Other non-metallic minerals	0,1	1,4	-1,0	-1,7	1,2	-0,7
Total	17,9	19,3	6,3	14,5	6,7	-1,4

Survey information

Introduction	1	Statistics South Africa (Stats SA) publishes monthly mining production indices and mineral sales based on the information furnished by the Department of Mineral Resources (DMR). Data in this release are presented by mineral group and mineral.
	2	In accordance with international practice, the indices are usually re-based every five years to a new base year. The current base year of the index of the volume of mining production is 2015=100. Both actual and seasonally adjusted figures are presented.
	3	The value of mineral sales is calculated, in general, on a free-on-rail/free-on-board basis.
	4	In order to improve timeliness, some information for the current month had to be estimated due to late response. These estimates will be revised in future statistical release(s) as soon as more up-to-date information is available.
Purpose of the survey	5	The monthly mining production and sales survey is conducted by the DMR, covering all mining establishments operating in the South African economy. The results of this survey are used to calculate the volume of mining production indices in order to estimate the gross domestic product (GDP) and its components, which in turn are used to develop and monitor government policy.
Scope of the survey	6	This survey covers mining establishments conducting activities regarding the extracting, dressing and beneficiating of minerals occurring naturally, for example solids such as coal and ores.
Classification	7	The 1993 edition of the <i>Standard Industrial Classification of all Economic Activities</i> (SIC), Fifth Edition, Report No. 09-90-02, was used to classify the statistical units in the survey. The SIC is based on the 1990 <i>International Standard Industrial Classification of all Economic Activities</i> (ISIC) with suitable adaptations for local conditions. Each statistical unit is classified to an industry which reflects the predominant activity of the establishment. Statistics in this publication are presented by mineral group and mineral.
Statistical unit	8	The statistical unit for the collection of information is the mining establishment. An establishment is the smallest economic unit that functions as a separate entity.
Rounding-off of figures	9	The figures in the tables have, where necessary, been rounded off to the nearest digit shown. There may, therefore, be slight discrepancies between the sums of the constituent items and the totals shown.
Historical data and past publications	10	Historical mining data and past publications are available on the Stats SA website. Click on the following link (Time series data) or (Past publications) to access the data and releases electronically.

Technical notes

Index of the volume of mining production	1	The index of the volume of mining production, also known as the production index, is a statistical measure of the change in the volume of production. The production index of a mineral group is the ratio between the volume of production of a mineral group in a given period and the volume of production of the same mineral group in the base period. The current base period is 2015. The production in the base period is set at 100.
Index weighting	2	The weight of a mineral group is the ratio of its value added to the total value added of the mining industry. The weight of a mineral group reflects the importance of the mineral group in the total mining industry. The weights change over time due to quality improvements and changes in relative prices. New weights will be calculated annually.
	3	The weights, which are used to aggregate minerals to mineral groups and mineral groups to total mining, are derived from national accounts value added data. The latest weights (implemented in the August 2017 publication) are based on an average of value added data for the years 2013, 2014 and 2015. These weights are applicable from January 2015.
Seasonal adjustment	4	Seasonally adjusted estimates are generated each month using the X-12-ARIMA Seasonal Adjustment Program developed by the US Bureau of the Census, 1968. Seasonal adjustment is a means of removing the estimated effects of normal seasonal variation from the series so that the effects of other influences on the series can be recognised more clearly. Seasonal adjustment does not aim to remove irregular or non-seasonal influences which may be present in any particular month.
	5	Influences that are volatile or unsystematic can still make it difficult to interpret the movement of the series even after adjustment for seasonal variations. This means the month-to-month movements of seasonally adjusted estimates may not be reliable indicators of trend behaviour. The X-12-ARIMA procedure for mining production and sales is described in more detail on the Stats SA website at: Click to download seasonal adjustment for mining production and sales
Calendar effects	6	These are effects due to calendar variations. Such calendar effects include the number of working/trading days in a week, moving holidays such as Easter and the length of month (some months have more days than others).
Trend cycle	7	The trend is the long-term pattern or movement of a time series. The X-12-ARIMA Seasonal Adjustment Program is used for smoothing seasonally adjusted estimates to estimate the underlying trend cycle.
Reliability of estimates	8	Figures for the latest 2 calendar years are preliminary.
Month-on-month percentage change	9	The month-on-month percentage change in a variable for any given month is the change between that month and the previous month, expressed as a percentage of the latter.
Year-on-year percentage change	10	The year-on-year percentage change in a variable for any given period is the change between that period and the corresponding period of the previous year, expressed as a percentage of the latter.
Index contribution (percentage points)	11	The contribution (percentage points) of a mineral group or mineral to the percentage change in the total mining production for a given period is calculated by multiplying the difference in the index for each mineral group or mineral by the weight of the mineral group or mineral and then dividing by the previous period's total index.

Sales contribution (percentage points) **12** The contribution (percentage points) to the percentage change in total sales for a given period is calculated by multiplying the percentage change of each mineral group or mineral with its percentage contribution to total mineral sales of the previous period, divided by 100.

Glossary

Free-on-rail Free-on-rail relates to goods sold on the local market where no railage or road transport costs are involved.

Free-on-board Free-on-board relates to goods destined for the export market. Railage, road transport and docking charges are involved but no charges are made for transport by sea.

Industry An industry consists of a group of establishments engaged in the same or similar kinds of economic activity. Industries are defined in the *System of National Accounts* (SNA) in the same way as in the *Standard Industrial Classification of all Economic Activities* (SIC), Fifth Edition of January 1993.

PGMs – Platinum group metals Platinum group metals include platinum, iridium, osmium, palladium, rhodium, ruthenium and osmium.

Sales Sales are the total value of sales of primary minerals at the first point of saleability by the mining establishment.

Symbols and abbreviations

DMR	Department of Mineral Resources
GDP	Gross domestic product
ISIC	International Standard Industrial Classification
PGMs	Platinum group metals
SIC	Standard Industrial Classification of all Economic Activities
SNA	System of National Accounts
Stats SA	Statistics South Africa
*	Revised

Technical enquiries

JP Terblanche Telephone number: (012) 310 2965
Email: juan-pierret@statssa.gov.za

Mpuleng Galane Telephone number: (012) 444 3735
Email: mpuleng.galane@dmr.gov.za

General information

Stats SA publishes approximately 300 different statistical releases each year. It is not economically viable to produce them in more than one of South Africa's eleven official languages. Since the releases are used extensively, not only locally but also by international economic and social-scientific communities, Stats SA releases are published in English only.

Stats SA has copyright on this publication. Users may apply the information as they wish, provided that they acknowledge Stats SA as the source of the basic data wherever they process, apply, utilise, publish or distribute the data and also that they specify that the relevant application and analysis (where applicable) result from their own processing of the data.

Advance release calendar

An advance release calendar is disseminated on www.statssa.gov.za

Stats SA products

A complete set of Stats SA publications is available at the Stats SA Library and the following libraries:

National Library of South Africa, Pretoria Division
National Library of South Africa, Cape Town Division
Natal Society Library, Pietermaritzburg
Library of Parliament, Cape Town
Bloemfontein Public Library
Johannesburg Public Library
Eastern Cape Library Services, King William's Town
Central Regional Library, Polokwane
Central Reference Library, Mbombela
Central Reference Collection, Kimberley
Central Reference Library, Mmabatho

Stats SA also provides a subscription service.

Electronic services

A large range of data is available via online services. For more detail about our electronic services, contact Stats SA's user information service.

You can visit us on the internet at: www.statssa.gov.za

General enquiries

User information services Telephone number: (012) 310 8600
Email address: info@statssa.gov.za

Postal address Private Bag X44, Pretoria, 0001

Produced by Stats SA