



The South Africa I know, the home I understand



# Statistical release

## P2041

# Mining: Production and sales (Preliminary)

December 2013

Embargoed until:  
13 February 2014  
11:30

**Enquiries:**

User Information Services  
Tel: (012) 310 8600

**Forthcoming issue:**

January 2014

**Expected release date:**

13 March 2014

**Contents**

**Production: results for December 2013..... 2**

Table A – Key growth rates in the volume of mining production..... 2

Table B – Seasonally adjusted index of the volume of mining production for the latest three months by mineral group and mineral (Base: 2010=100)..... 2

Figure 1 – Volume of mining production (Base: 2010=100) ..... 3

Figure 2 – Volume of mining production (Base: 2010=100): year-on-year percentage change..... 3

**Sales: results for November 2013..... 4**

Table C – Key growth rates in mineral sales at current prices..... 4

Table D – Seasonally adjusted mineral sales at current prices for the latest three months by mineral group and mineral ..... 4

**Tables ..... 5**

Table 1 – Index of the volume of mining production (Base: 2010=100)..... 5

Table 2 – Year-on-year percentage change in the volume of mining production..... 5

Table 3 – Seasonally adjusted volume of total mining production ..... 5

Table 4 – Index of the volume of mining production by mineral group and mineral (Base: 2010=100)..... 6

Table 5 – Seasonally adjusted index of the volume of mining production by mineral group and mineral (Base: 2010=100) ..... 6

Table 6 – Year-on-year percentage change in the volume of mining production by mineral group and mineral..... 7

Table 7 – Contribution of each mineral group and mineral to the year-on-year percentage change in the volume of mining production (percentage points) ..... 7

Table 8 – Mineral sales at current prices (R million) ..... 8

Table 9 – Year-on-year percentage change in mineral sales at current prices..... 8

Table 10 – Seasonally adjusted mineral sales at current prices ..... 8

Table 11 – Mineral sales at current prices by mineral group and mineral (R million) ..... 9

Table 12 – Seasonally adjusted mineral sales at current prices by mineral group and mineral (R million)..... 9

Table 13 – Year-on-year percentage change in mineral sales at current prices by mineral group and mineral..... 10

Table 14 – Contribution of each mineral group and mineral to the year-on-year percentage change in mineral sales at current prices (percentage points) ..... 10

**Survey information..... 11**

**Technical notes ..... 12**

**Glossary ..... 13**

**Technical enquiries ..... 13**

**General information ..... 14**

**Production: results for December 2013**

**Table A – Key growth rates in the volume of mining production**

	Jul-13	Aug-13	Sep-13	Oct-13	Nov-13	Dec-13
Year-on-year % change, unadjusted	1,8	2,5	0,8	23,1	5,2	12,0
Month-on-month % change, seasonally adjusted	3,8	-1,6	-4,5	8,2	-3,2	6,2
3-month % change, seasonally adjusted 1/	4,6	4,0	1,5	-0,1	-0,1	4,3

1/ Percentage change between the previous three months and the three months ending in the month indicated.

Mining production increased by 12,0% year-on-year in December 2013. The highest positive growth rates were recorded for building materials (39,9%), iron ore (32,3%), chromium ore (29,9%) and manganese ore (24,6%). The main contributors to the 12,0% increase were iron ore (contributing 5,8 percentage points), PGMs (contributing 3,6 percentage points) and gold (contributing 1,8 percentage points) – see Tables 6 and 7.

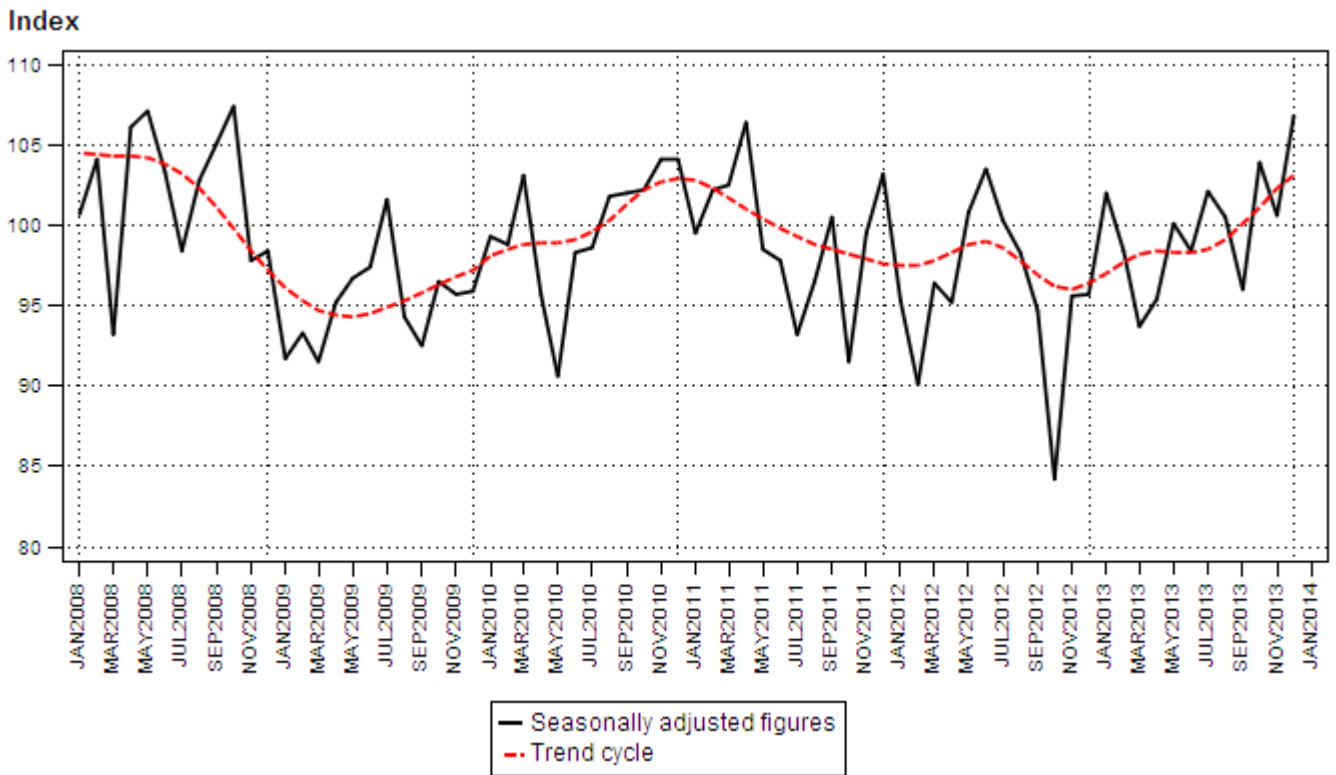
Total mining production was 4,0% higher in 2013 compared with 2012. The 4,0% increase in annual mining production followed a decrease of 3,2% in 2012 and a decrease of 0,9% in 2011 (see Table 2).

**Table B – Seasonally adjusted index of the volume of mining production for the latest three months by mineral group and mineral (Base: 2010=100)**

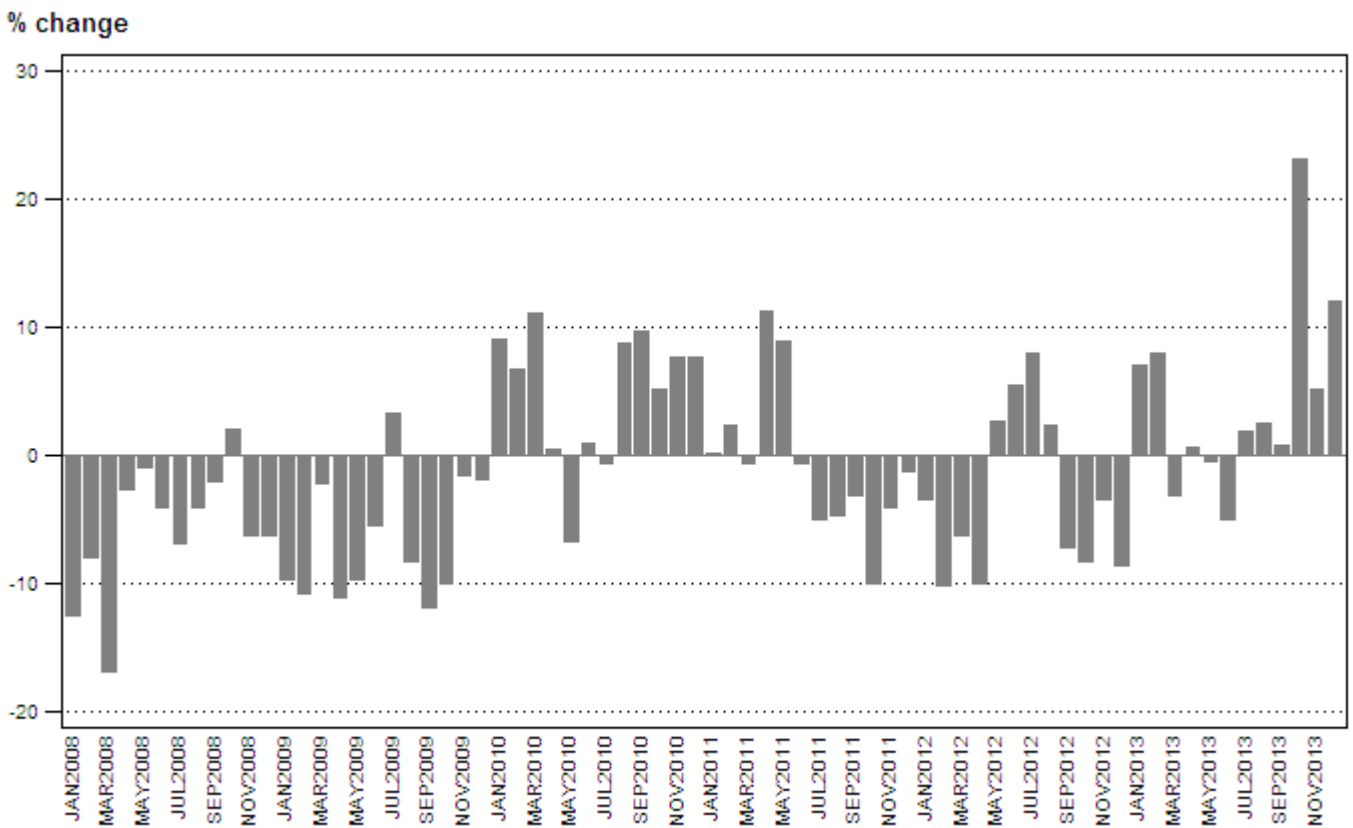
Mineral group and mineral	Weight (2010)	Jul – Sep 2013	Oct – Dec 2013	% change between Jul – Sep 2013 and Oct – Dec 2013	Contribution (% points) to the % change in total mining production
Gold	17,7	85,4	87,7	2,7	0,4
Iron ore	14,4	108,8	131,6	21,0	3,3
Chromium ore	2,2	126,1	132,0	4,7	0,1
Copper	1,4	107,4	99,7	-7,2	-0,1
Manganese ore	3,6	157,0	171,4	9,2	0,5
PGMs	24,6	95,6	96,3	0,7	0,2
Nickel	2,0	133,2	140,8	5,7	0,2
Other metallic minerals	2,5	83,0	76,3	-8,1	-0,2
Diamonds	3,1	89,3	116,7	30,7	0,9
Coal	23,7	98,5	94,7	-3,9	-0,9
Building materials	1,6	108,1	125,1	15,7	0,3
Other non-metallic minerals	3,2	84,7	73,9	-12,8	-0,3
<b>Total</b>	<b>100,0</b>	<b>99,5</b>	<b>103,8</b>	<b>4,3</b>	<b>4,3</b>

Seasonally adjusted mining production increased by 4,3% in the fourth quarter of 2013 compared with the previous quarter. The main contributor to the 4,3% increase was iron ore (contributing 3,3 percentage points) – see Table B.

**Figure 1 – Volume of mining production (Base: 2010=100)**



**Figure 2 – Volume of mining production (Base: 2010=100): year-on-year percentage change**



**Sales: results for November 2013**

**Table C – Key growth rates in mineral sales at current prices**

	Jun-13	Jul-13	Aug-13	Sep-13	Oct-13	Nov-13
Year-on-year % change, unadjusted	-0,6	1,0	8,2	8,7	16,9	7,9
Month-on-month % change, seasonally adjusted	5,3	2,3	8,3	-8,0	3,3	-2,7
3-month % change, seasonally adjusted 1/	-4,5	-5,8	2,1	4,7	7,0	-1,1

1/ Percentage change between the previous three months and the three months ending in the month indicated.

Mineral sales increased by 7,9% year-on-year in November 2013. The highest positive growth rates were recorded for 'other' metallic minerals (76,6%), iron ore (60,3%), nickel (37,9%) and chromium ore (34,0%). The major contributors to the 7,9% increase were iron ore (contributing 6,8 percentage points) and PGMs (contributing 4,8 percentage points). Gold (contributing -8,0 percentage points) was a significant negative contributor – see Tables 13 and 14.

Seasonally adjusted mineral sales at current prices decreased by 2,7% in November 2013 compared with October 2013. This followed month-on-month changes of 3,3% in October 2013 and -8,0% in September 2013.

**Table D – Seasonally adjusted mineral sales at current prices for the latest three months by mineral group and mineral**

Mineral group and mineral	% contribution to total mineral sales during Jun – Aug 2013	Jun – Aug 2013 R million	Sept – Nov 2013 R million	% change between Jun – Aug 2013 and Sept – Nov 2013	Contribution to the % change in the total value of mineral sales
Gold	13,3	12 861,1	11 945,5	-7,1	-0,9
Iron ore	17,2	16 734,9	16 322,2	-2,5	-0,4
Chromium ore	3,1	2 984,9	3 259,1	9,2	0,3
Copper	1,5	1 489,0	1 711,6	14,9	0,2
Manganese ore	4,3	4 176,7	3 295,0	-21,1	-0,9
PGMs	22,5	21 842,7	22 524,1	3,1	0,7
Nickel	2,1	2 050,6	1 772,7	-13,6	-0,3
Other metallic minerals	3,1	2 989,2	2 465,4	-17,5	-0,5
Coal	25,7	24 923,0	25 594,2	2,7	0,7
Building materials	2,5	2 388,6	2 329,1	-2,5	-0,1
Other non-metallic minerals	4,7	4 574,4	4 723,2	3,3	0,2
<b>Total</b>	<b>100,0</b>	<b>97 015,1</b>	<b>95 942,1</b>	<b>-1,1</b>	<b>-1,1</b>

**Note:** Statistics South Africa (Stats SA) is in the process of refining the seasonal adjustment of its economic statistics through the introduction of X-12-ARIMA (in place of X-11). Owing to the weakness or absence of seasonal patterns in the breakdown of mining sales, Stats SA proposes to discontinue the publication of Tables D and 12 in this statistical release. Seasonally adjusted *total* sales will continue to be published in Table 10. Should you have any comments or enquiries regarding this proposal please contact:

Juan-Pierre Terblanche  
[juan-pierret@statssa.gov.za](mailto:juan-pierret@statssa.gov.za)  
 012 310 2965

Seasonally adjusted mineral sales at current prices decreased by 1,1% in the three months ended November 2013 compared with the previous three months. This decrease was largely driven by the sales value of manganese ore and gold (each contributing -0,9 of a percentage point) – see Table D.

**PJ Lehohla**  
**Statistician-General**

**Tables**

**Table 1 – Index of the volume of mining production (Base: 2010=100)**

Month	2007	2008	2009	2010	2011	2012 1/	2013 1/
Jan	99,8	87,4	79,0	86,2	86,4	83,4	89,3
Feb	100,5	92,5	82,6	88,1	90,2	81,0	87,4
Mar	113,9	94,7	92,6	102,8	102,2	95,9	92,9
Apr	103,9	101,1	90,0	90,4	100,5	90,4	91,0
May	109,6	108,6	98,1	91,5	99,6	102,3	101,9
Jun	113,5	108,9	102,9	103,8	103,2	108,8	103,4
Jul	106,2	99,0	102,3	101,7	96,6	104,2	106,1
Aug	112,5	107,9	99,1	107,8	102,8	105,3	107,9
Sep	115,6	113,2	99,8	109,5	106,1	98,6	99,4
Oct	107,3	109,6	98,7	103,7	93,3	85,6	105,4
Nov	109,2	102,3	100,7	108,5	104,0	100,4	105,6
Dec	107,1	100,4	98,5	106,1	104,7	95,8	107,3
<b>Year</b>	<b>108,3</b>	<b>102,1</b>	<b>95,4</b>	<b>100,0</b>	<b>99,1</b>	<b>96,0</b>	<b>99,8</b>

1/ Preliminary.

**Table 2 – Year-on-year percentage change in the volume of mining production**

Month	2008	2009	2010	2011	2012	2013	2013 year-to-date
Jan	-12,4	-9,6	9,1	0,2	-3,5	7,1	7,1
Feb	-7,9	-10,8	6,7	2,4	-10,2	7,9	7,5
Mar	-16,8	-2,2	11,0	-0,6	-6,2	-3,1	3,6
Apr	-2,6	-11,0	0,5	11,2	-10,0	0,7	2,8
May	-0,9	-9,7	-6,7	8,9	2,7	-0,4	2,1
Jun	-4,1	-5,5	0,9	-0,6	5,4	-5,0	0,7
Jul	-6,8	3,3	-0,5	-5,0	7,9	1,8	0,9
Aug	-4,0	-8,2	8,8	-4,6	2,4	2,5	1,1
Sep	-2,1	-11,8	9,7	-3,1	-7,1	0,8	1,1
Oct	2,1	-9,9	5,0	-10,0	-8,3	23,1	3,1
Nov	-6,3	-1,5	7,7	-4,1	-3,5	5,2	3,3
Dec	-6,3	-1,9	7,7	-1,3	-8,5	12,0	4,0
<b>Year</b>	<b>-5,6</b>	<b>-6,6</b>	<b>4,8</b>	<b>-0,9</b>	<b>-3,2</b>	<b>4,0</b>	

**Table 3 – Seasonally adjusted volume of total mining production**

Month	Index (Base: 2010=100)				Month-on-month % change			
	2010	2011	2012	2013	2010	2011	2012	2013
Jan	99,3	99,5	95,3	102,0	3,5	-4,4	-7,7	6,6
Feb	98,8	102,2	90,1	98,4	-0,5	2,7	-5,5	-3,5
Mar	103,1	102,5	96,4	93,7	4,4	0,3	7,0	-4,8
Apr	95,7	106,4	95,2	95,4	-7,2	3,8	-1,2	1,8
May	90,6	98,5	100,8	100,1	-5,3	-7,4	5,9	4,9
Jun	98,3	97,8	103,5	98,4	8,5	-0,7	2,7	-1,7
Jul	98,6	93,2	100,3	102,1	0,3	-4,7	-3,1	3,8
Aug	101,8	96,5	98,3	100,5	3,2	3,5	-2,0	-1,6
Sep	102,0	100,5	94,7	96,0	0,2	4,1	-3,7	-4,5
Oct	102,2	91,5	84,2	103,9	0,2	-9,0	-11,1	8,2
Nov	104,1	99,5	95,6	100,6	1,9	8,7	13,5	-3,2
Dec	104,1	103,2	95,7	106,8	0,0	3,7	0,1	6,2

**Table 4 – Index of the volume of mining production by mineral group and mineral (Base: 2010=100) 1/**

Mineral group and mineral	Weight (2010)	Jul-13	Aug-13	Sep-13	Oct-13	Nov-13	Dec-13
Gold	17,7	93,1	87,3	85,8	90,7	92,0	83,5
Iron ore	14,4	116,8	113,3	103,2	119,6	125,4	158,2
Chromium ore	2,2	128,7	134,6	134,2	140,5	133,5	125,9
Copper	1,4	102,4	86,3	91,3	115,7	102,1	84,2
Manganese ore	3,6	148,7	163,2	170,6	179,9	170,7	166,9
PGMs	24,6	106,1	113,5	94,1	96,4	99,9	113,5
Nickel	2,0	127,2	142,3	127,8	140,4	143,3	139,9
Other metallic minerals	2,5	76,1	92,6	89,3	91,1	65,3	74,8
Diamonds	3,1	98,1	105,3	103,6	110,0	116,9	131,9
Coal	23,7	106,1	104,3	98,3	102,8	101,2	80,5
Building materials	1,6	124,6	114,3	111,6	129,9	125,4	103,1
Other non-metallic minerals	3,2	78,3	101,4	86,3	73,1	66,6	76,2
<b>Total</b>	<b>100,0</b>	<b>106,1</b>	<b>107,9</b>	<b>99,4</b>	<b>105,4</b>	<b>105,6</b>	<b>107,3</b>

1/ All values in this table are preliminary.

**Table 5 – Seasonally adjusted index of the volume of mining production by mineral group and mineral (Base: 2010=100)**

Mineral group and mineral	Jul-13	Aug-13	Sep-13	Oct-13	Nov-13	Dec-13	Month-on-month % change
Gold	91,4	82,8	82,1	88,5	89,1	85,6	-3,9
Iron ore	112,4	110,8	103,3	115,3	124,0	155,4	25,3
Chromium ore	122,9	126,8	128,6	130,1	127,6	138,4	8,5
Copper	104,7	106,8	110,8	132,6	93,2	73,4	-21,2
Manganese ore	151,2	147,4	172,5	178,6	170,5	165,1	-3,2
PGMs	101,1	98,5	87,2	101,0	89,8	98,1	9,2
Nickel	130,6	136,9	132,1	141,1	138,9	142,3	2,4
Other metallic minerals	75,5	85,7	87,9	85,3	67,4	76,3	13,2
Diamonds	82,3	96,9	88,7	104,0	113,0	133,0	17,7
Coal	100,6	98,8	96,2	97,9	96,0	90,2	-6,0
Building materials	117,2	107,3	99,8	118,3	111,5	145,4	30,4
Other non-metallic minerals	77,9	96,7	79,4	74,0	67,1	80,5	20,0
<b>Total</b>	<b>102,1</b>	<b>100,5</b>	<b>96,0</b>	<b>103,9</b>	<b>100,6</b>	<b>106,8</b>	<b>6,2</b>

**Table 6 – Year-on-year percentage change in the volume of mining production by mineral group and mineral**

Mineral group and mineral	Jul-13	Aug-13	Sep-13	Oct-13	Nov-13	Dec-13
Gold	3,8	-1,0	-3,5	74,4	35,5	12,8
Iron ore	-8,3	-12,0	-20,0	37,8	8,0	32,3
Chromium ore	14,9	23,7	44,1	44,5	6,5	29,9
Copper	4,4	95,2	187,1	194,4	12,8	-15,2
Manganese ore	20,2	9,4	53,1	53,8	33,6	24,6
PGMs	4,3	7,4	3,6	16,4	-4,5	14,0
Nickel	14,7	16,4	11,4	15,4	16,6	20,9
Other metallic minerals	-19,4	-10,7	-0,6	13,2	-33,4	-3,7
Diamonds	7,9	27,2	9,6	24,2	27,3	12,3
Coal	0,9	-0,3	-1,2	-2,5	-4,2	-10,1
Building materials	17,8	6,8	13,5	22,9	4,7	39,9
Other non-metallic minerals	-6,5	23,4	-2,2	-16,6	-18,3	2,1
<b>Total</b>	<b>1,8</b>	<b>2,5</b>	<b>0,8</b>	<b>23,1</b>	<b>5,2</b>	<b>12,0</b>

**Table 7 – Contribution of each mineral group and mineral to the year-on-year percentage change in the volume of mining production (percentage points)**

Mineral group and mineral	Jul-13	Aug-13	Sep-13	Oct-13	Nov-13	Dec-13
Gold	0,6	-0,2	-0,6	8,0	4,2	1,8
Iron ore	-1,5	-2,1	-3,8	5,5	1,3	5,8
Chromium ore	0,4	0,5	0,9	1,1	0,2	0,6
Copper	0,1	0,6	0,8	1,2	0,2	-0,2
Manganese ore	0,9	0,5	2,2	2,6	1,5	1,2
PGMs	1,0	1,8	0,8	3,9	-1,2	3,6
Nickel	0,3	0,4	0,3	0,4	0,4	0,5
Other metallic minerals	-0,4	-0,3	0,0	0,3	-0,8	-0,1
Diamonds	0,2	0,7	0,3	0,8	0,8	0,4
Coal	0,2	-0,1	-0,3	-0,7	-1,0	-2,2
Building materials	0,3	0,1	0,2	0,5	0,1	0,5
Other non-metallic minerals	-0,2	0,6	-0,1	-0,5	-0,5	0,1
<b>Total</b>	<b>1,8</b>	<b>2,5</b>	<b>0,8</b>	<b>23,1</b>	<b>5,2</b>	<b>12,0</b>



**Table 8 – Mineral sales at current prices (R million)**

Month	2007	2008	2009	2010	2011	2012 1/	2013 1/
Jan	15 692,9	17 442,2	17 263,9	19 185,1	25 367,7	28 808,5	28 931,5
Feb	17 928,6	21 737,4	19 906,3	20 408,4	27 544,0	29 223,7	30 358,8
Mar	18 555,2	25 894,1	22 093,9	23 860,1	31 486,9	30 795,3	34 717,7
Apr	17 447,8	25 520,6	20 733,6	23 551,4	27 388,9	26 744,9	30 549,4
May	19 841,6	26 737,6	18 463,5	25 535,2	27 851,9	31 234,1	29 069,5
Jun	19 033,2	29 881,0	20 337,3	25 882,9	33 949,7	33 918,3	33 710,8
Jul	17 449,4	27 164,7	20 019,7	25 588,6	27 910,5	30 864,8	31 162,0
Aug	17 890,4	27 064,3	20 144,0	25 897,8	30 304,5	31 359,2	33 935,3
Sep	19 619,7	27 830,7	20 737,7	27 994,7	35 735,9	30 315,5	32 954,1
Oct	18 713,7	27 191,4	19 909,8	27 535,5	33 429,6	28 217,1	32 995,0
Nov	20 674,4	23 991,0	20 128,7	27 114,9	35 304,5	29 881,9	32 236,6
Dec	21 590,8	20 259,5	21 626,2	27 737,9	34 557,3	32 909,2	
<b>Total</b>	<b>224 437,7</b>	<b>300 714,5</b>	<b>241 364,6</b>	<b>300 292,5</b>	<b>370 831,4</b>	<b>364 272,5</b>	

1/ Preliminary.

**Table 9 – Year-on-year percentage change in mineral sales at current prices**

Month	2008	2009	2010	2011	2012	2013	2013 year-to-date
Jan	11,1	-1,0	11,1	32,2	13,6	0,4	0,4
Feb	21,2	-8,4	2,5	35,0	6,1	3,9	2,2
Mar	39,6	-14,7	8,0	32,0	-2,2	12,7	5,8
Apr	46,3	-18,8	13,6	16,3	-2,4	14,2	7,8
May	34,8	-30,9	38,3	9,1	12,1	-6,9	4,6
Jun	57,0	-31,9	27,3	31,2	-0,1	-0,6	3,7
Jul	55,7	-26,3	27,8	9,1	10,6	1,0	3,3
Aug	51,3	-25,6	28,6	17,0	3,5	8,2	3,9
Sep	41,9	-25,5	35,0	27,7	-15,2	8,7	4,4
Oct	45,3	-26,8	38,3	21,4	-15,6	16,9	5,6
Nov	16,0	-16,1	34,7	30,2	-15,4	7,9	5,8
Dec	-6,2	6,7	28,3	24,6	-4,8		
<b>Total</b>	<b>34,0</b>	<b>-19,7</b>	<b>24,4</b>	<b>23,5</b>	<b>-1,8</b>		

**Table 10 – Seasonally adjusted mineral sales at current prices**

Month	R million				Month-on-month % change			
	2010	2011	2012	2013	2010	2011	2012	2013
Jan	22 137,0	28 748,2	32 829,3	32 683,4	3,4	6,2	-2,6	2,9
Feb	21 797,5	29 584,0	31 014,3	32 148,7	-1,5	2,9	-5,5	-1,6
Mar	22 597,8	29 671,5	28 988,2	32 782,0	3,7	0,3	-6,5	2,0
Apr	24 749,9	29 094,0	28 385,2	32 816,9	9,5	-1,9	-2,1	0,1
May	25 595,5	28 214,6	31 610,2	29 415,2	3,4	-3,0	11,4	-10,4
Jun	23 970,0	31 164,9	31 524,2	30 982,1	-6,4	10,5	-0,3	5,3
Jul	25 714,1	28 102,5	31 265,7	31 705,5	7,3	-9,8	-0,8	2,3
Aug	25 868,5	30 514,1	31 246,5	34 327,5	0,6	8,6	-0,1	8,3
Sep	26 652,6	34 213,7	29 082,7	31 588,8	3,0	12,1	-6,9	-8,0
Oct	27 088,9	32 842,9	27 809,8	32 618,6	1,6	-4,0	-4,4	3,3
Nov	26 622,6	34 580,2	29 087,8	31 734,7	-1,7	5,3	4,6	-2,7
Dec	27 074,5	33 714,5	31 770,2		1,7	-2,5	9,2	

**Table 11 – Mineral sales at current prices by mineral group and mineral (R million) 1/**

Mineral group and mineral	Jun-13	Jul-13	Aug-13	Sep-13	Oct-13	Nov-13
Gold	4 420,3	4 433,6	4 236,4	4 154,2	4 729,4	3 805,3
Iron ore	5 261,9	4 996,5	5 494,1	5 280,6	5 442,1	5 433,5
Chromium ore	1 072,1	1 016,2	1 095,6	961,1	1 170,6	1 108,0
Copper	590,6	414,3	513,2	582,2	537,8	568,5
Manganese ore	1 178,1	1 539,7	1 607,0	1 072,7	879,9	1 165,0
PGMs	7 845,5	6 794,9	8 988,4	8 407,3	7 190,1	7 380,4
Nickel	1 001,3	570,9	575,2	489,5	519,6	852,9
Other metallic minerals	1 364,0	928,2	923,9	1 045,7	603,4	815,7
Coal	8 108,6	8 862,9	8 312,1	8 055,5	9 463,5	8 906,1
Building materials	800,9	844,1	885,8	765,8	900,8	816,5
Other non-metallic minerals	2 067,5	760,6	1 303,5	2 139,6	1 557,7	1 384,6
<b>Total</b>	<b>33 710,8</b>	<b>31 162,0</b>	<b>33 935,3</b>	<b>32 954,1</b>	<b>32 995,0</b>	<b>32 236,6</b>

1/ All values in this table are preliminary.

**Table 12 – Seasonally adjusted mineral sales at current prices by mineral group and mineral (R million)**

Mineral group and mineral	Jul-13	Aug-13	Sep-13	Oct-13	Nov-13	Month-on-month % change
Gold	4 424,0	4 161,4	3 894,5	4 555,3	3 495,7	-23,3
Iron ore	4 806,9	7 487,6	5 134,0	5 416,5	5 771,7	6,6
Chromium ore	984,9	1 007,0	1 009,9	1 146,5	1 102,7	-3,8
Copper	430,3	565,0	591,4	556,3	563,9	1,4
Manganese ore	1 716,8	1 271,2	1 144,5	939,2	1 211,3	29,0
PGMs	7 130,3	7 864,5	7 303,0	7 849,4	7 371,7	-6,1
Nickel	726,9	597,6	546,5	501,9	724,3	44,3
Other metallic minerals	911,9	1 041,0	917,1	643,6	904,7	40,6
Coal	8 412,8	8 072,6	8 392,4	8 708,0	8 493,8	-2,5
Building materials	790,5	820,3	747,3	846,3	735,5	-13,1
Other non-metallic minerals	1 370,2	1 439,3	1 908,2	1 455,6	1 359,4	-6,6
<b>Total</b>	<b>31 705,5</b>	<b>34 327,5</b>	<b>31 588,8</b>	<b>32 618,6</b>	<b>31 734,7</b>	<b>-2,7</b>

**Note:**

Statistics South Africa (Stats SA) is in the process of refining the seasonal adjustment of its economic statistics through the introduction of X-12-ARIMA (in place of X-11). Owing to the weakness or absence of seasonal patterns in the breakdown of mining sales, Stats SA proposes to discontinue the publication of Tables D and 12 in this statistical release. Seasonally adjusted *total* sales will continue to be published in Table 10. Should you have any comments or enquiries regarding this proposal please contact:

Juan-Pierre Terblanche  
[juan-pierret@statssa.gov.za](mailto:juan-pierret@statssa.gov.za)  
 012 310 2965

**Table 13 – Year-on-year percentage change in mineral sales at current prices by mineral group and mineral**

Mineral group and mineral	Jun-13	Jul-13	Aug-13	Sep-13	Oct-13	Nov-13
Gold	-42,2	-35,0	-42,4	-37,3	-6,1	-38,6
Iron ore	-6,1	6,5	68,5	27,6	34,7	60,3
Chromium ore	34,5	46,9	48,8	55,3	106,0	34,0
Copper	15,0	-10,2	47,0	121,1	61,7	19,6
Manganese ore	27,4	84,2	22,7	15,1	18,7	15,8
PGMs	22,6	16,1	31,8	27,9	27,1	24,4
Nickel	41,5	31,2	7,1	-12,3	-12,4	37,9
Other metallic minerals	25,5	-12,1	21,0	26,1	-26,5	76,6
Coal	1,8	5,3	0,2	10,1	18,1	5,1
Building materials	17,5	16,8	26,5	14,9	31,3	5,7
Other non-metallic minerals	29,9	-14,4	6,1	19,6	-10,0	-19,6
<b>Total</b>	<b>-0,6</b>	<b>1,0</b>	<b>8,2</b>	<b>8,7</b>	<b>16,9</b>	<b>7,9</b>

**Table 14 – Contribution of each mineral group and mineral to the year-on-year percentage change in mineral sales at current prices (percentage points)**

Mineral group and mineral	Jun-13	Jul-13	Aug-13	Sep-13	Oct-13	Nov-13
Gold	-9,5	-7,7	-9,9	-8,2	-1,1	-8,0
Iron ore	-1,0	1,0	7,1	3,8	5,0	6,8
Chromium ore	0,8	1,1	1,1	1,1	2,1	1,0
Copper	0,2	-0,2	0,5	1,1	0,7	0,3
Manganese ore	0,7	2,3	0,9	0,5	0,5	0,5
PGMs	4,3	3,1	6,9	6,1	5,4	4,8
Nickel	0,9	0,4	0,1	-0,2	-0,3	0,8
Other metallic minerals	0,8	-0,4	0,5	0,7	-0,8	1,2
Coal	0,4	1,4	0,1	2,4	5,1	1,4
Building materials	0,4	0,4	0,6	0,3	0,8	0,1
Other non-metallic minerals	1,4	-0,4	0,2	1,2	-0,6	-1,1
<b>Total</b>	<b>-0,6</b>	<b>1,0</b>	<b>8,2</b>	<b>8,7</b>	<b>16,9</b>	<b>7,9</b>

**Survey information**

<b>Introduction</b>	1	Statistics South Africa (Stats SA) publishes monthly mining production indices and mineral sales based on the information furnished by the Department of Mineral Resources (DMR). Data in this release are presented by mineral group and mineral.
	2	In accordance with international practice, the indices are usually re-based every five years to a new base year. The current base year of the index of the volume of mining production is 2010=100. Both actual and seasonally adjusted figures are presented.
	3	Due to mining production figures being available earlier than mineral sales figures, mining production indices are published one month earlier than mineral sales.
	4	The value of mineral sales is calculated, in general, on a free-on-rail/free-on-board basis.
	5	In order to improve timeliness, some information for the current month had to be estimated due to late response. These estimates will be revised in future statistical release(s) as soon as more up-to-date information is available.
<b>Purpose of the survey</b>	6	The monthly mining production and sales survey is conducted by the DMR, covering all mining establishments operating in the South African economy. The results of this survey are used to calculate the volume of mining production indices in order to estimate the gross domestic product (GDP) and its components, which in turn are used to develop and monitor government policy.
<b>Scope of the survey</b>	7	This survey covers mining establishments conducting activities regarding the extracting, dressing and beneficiating of minerals occurring naturally, for example solids such as coal and ores.
<b>Classification</b>	8	The 1993 edition of the <i>Standard Industrial Classification of all Economic Activities (SIC)</i> , Fifth Edition, Report No. 09-90-02, was used to classify the statistical units in the survey. The SIC is based on the 1990 <i>International Standard Industrial Classification of all Economic Activities (ISIC)</i> with suitable adaptations for local conditions. Each statistical unit is classified to an industry which reflects the predominant activity of the establishment. Statistics in this publication are presented by mineral group and mineral.
<b>Statistical unit</b>	9	The statistical unit for the collection of information is the mining establishment. An establishment is the smallest economic unit that functions as a separate entity.
<b>Related publications</b>	10	Users may also wish to refer to the following publications which are available from Stats SA – <ul style="list-style-type: none"> <li>• <i>Bulletin of Statistics</i> issued quarterly; and</li> <li>• <i>SA Statistics</i> issued annually.</li> </ul>
<b>Rounding-off of figures</b>	11	The figures in the tables have, where necessary, been rounded off to the nearest digit shown. There may, therefore, be slight discrepancies between the sums of the constituent items and the totals shown.
<b>Historical data and past publications</b>	12	Historical mining data and past publications are available on the Stats SA website. Click on the following link ( <a href="#">Time series data</a> ) or ( <a href="#">Past publications</a> ) to access the data and releases electronically.

**Technical notes**

<b>Index of the volume of mining production</b>	<b>1</b>	The index of the volume of mining production, also known as the production index, is a statistical measure of the change in the volume of production. The production index of a mineral group is the ratio between the volume of production of a mineral group in a given period and the volume of production of the same mineral group in the base period. The current base period is 2010. The production in the base period is set at 100.
<b>Index weighting</b>	<b>2</b>	The weight of a mineral group is the ratio of the sales of a mineral group to the total sales of the mining industry. The weight of a mineral group reflects the importance of the mineral group in the total mining industry. The weights change over time due to quality changes and changes in relative prices. New weights need to be calculated from time to time
	<b>3</b>	The weights, which are used to aggregate minerals to mineral groups; and mineral groups to total mining, are based on the value of sales derived from detailed information for 2010 supplied by the Department of Mineral Resources (DMR).
<b>Seasonal adjustment</b>	<b>4</b>	Seasonally adjusted estimates of all items are generated each month, using the X-11 Seasonal Adjustment Program developed by US Bureau of the Census Economic Research and Analyses Division, 1968. Seasonal adjustment is a means of removing the estimated effects of normal seasonal variation from the series so that the effects of other influences on the series can be more clearly recognised. Seasonal adjustment does not aim to remove irregular or non-seasonal influences which may be present in any particular month.
	<b>5</b>	Influences that are volatile or unsystematic can still make it difficult to interpret the movement of the series even after adjustment for seasonal variations. This means the month-to-month movements of seasonally adjusted estimates may not be reliable indicators of trend behaviour.
<b>Trend cycle</b>	<b>6</b>	The trend is the long-term pattern or movement of a time series. The X-11 Seasonal Adjustment Program is used for smoothing seasonally adjusted estimates to estimate the underlying trend cycle.
<b>Reliability of estimates</b>	<b>7</b>	Figures for the latest 2 calendar years are preliminary.
<b>Month-on-month percentage change</b>	<b>8</b>	The month-on-month percentage change in a variable for any given month is the change between that month and the previous month, expressed as a percentage of the latter.
<b>Year-on-year percentage change</b>	<b>9</b>	The year-on-year percentage change in a variable for any given period is the change between that period and the corresponding period of the previous year, expressed as a percentage of the latter.
<b>Index contribution (percentage points)</b>	<b>10</b>	The contribution (percentage points) of a mineral group or mineral to the percentage change in the total mining production for a given period is calculated by multiplying the difference in the index for each mineral group or mineral by the weight of the mineral group or mineral and then dividing by the previous period's total index.
<b>Sales contribution (percentage points)</b>	<b>11</b>	The contribution (percentage points) to the percentage change in total sales for a given period is calculated by multiplying the percentage change of each mineral group or mineral with its percentage contribution to total mineral sales of the previous period, divided by 100.

**Glossary**

<b>Free-on-rail</b>	Free-on-rail relates to goods sold on the local market where no railage or road transport costs are involved.																
<b>Free-on-board</b>	Free-on-board relates to goods destined for the export market. Railage, road transport and docking charges are involved but no charges are made for the transport by sea.																
<b>Industry</b>	An industry consists of a group of establishments engaged in the same or similar kinds of economic activity. Industries are defined in the <i>System of National Accounts (SNA)</i> in the same way as in the <i>Standard Industrial Classification (SIC) of all Economic Activities</i> , Fifth Edition of January 1993.																
<b>PGMs – Platinum group metals</b>	Platinum group metals include platinum; iridium; osmiridium; palladium; rhodium; ruthenium and osmium.																
<b>Sales</b>	Sales are the total value of sales of primary minerals at the first point of saleability by the mining establishment.																
<b>Symbols and abbreviations</b>	<table border="0"> <tr> <td>DMR</td> <td>Department of Mineral Resources</td> </tr> <tr> <td>GDP</td> <td>Gross domestic product</td> </tr> <tr> <td>ISIC</td> <td>International Standard Industrial Classification</td> </tr> <tr> <td>PGMs</td> <td>Platinum group metals</td> </tr> <tr> <td>SIC</td> <td>Standard Industrial Classification of all Economic Activities</td> </tr> <tr> <td>SNA</td> <td>System of National Accounts</td> </tr> <tr> <td>Stats SA</td> <td>Statistics South Africa</td> </tr> <tr> <td>*</td> <td>Revised</td> </tr> </table>	DMR	Department of Mineral Resources	GDP	Gross domestic product	ISIC	International Standard Industrial Classification	PGMs	Platinum group metals	SIC	Standard Industrial Classification of all Economic Activities	SNA	System of National Accounts	Stats SA	Statistics South Africa	*	Revised
DMR	Department of Mineral Resources																
GDP	Gross domestic product																
ISIC	International Standard Industrial Classification																
PGMs	Platinum group metals																
SIC	Standard Industrial Classification of all Economic Activities																
SNA	System of National Accounts																
Stats SA	Statistics South Africa																
*	Revised																

**Technical enquiries**

<b>JP Terblanche</b>	Telephone number: (012) 310 2965 Email: <a href="mailto:juan-pierret@statssa.gov.za">juan-pierret@statssa.gov.za</a>
<b>Martin Kohler</b>	Telephone number: (012) 444 3734 Email: <a href="mailto:martin.kohler@dmr.gov.za">martin.kohler@dmr.gov.za</a>
<b>Gerda Bruwer</b>	Telephone number: (012) 310 8249 Email: <a href="mailto:gerdab@statssa.gov.za">gerdab@statssa.gov.za</a>

## General information

Stats SA publishes approximately 300 different statistical releases each year. It is not economically viable to produce them in more than one of South Africa's eleven official languages. Since the releases are used extensively, not only locally but also by international economic and social-scientific communities, Stats SA releases are published in English only.

Stats SA has copyright on this publication. Users may apply the information as they wish, provided that they acknowledge Stats SA as the source of the basic data wherever they process, apply, utilise, publish or distribute the data: and also that they specify that the relevant application and analysis (where applicable) result from their own processing of the data.

## Advance release calendar

An advance release calendar is disseminated on [www.statssa.gov.za](http://www.statssa.gov.za)

## Stats SA products

A complete set of Stats SA publications is available at the Stats SA Library and the following libraries:

National Library of South Africa, Pretoria Division  
National Library of South Africa, Cape Town Division  
Natal Society Library, Pietermaritzburg  
Library of Parliament, Cape Town  
Bloemfontein Public Library  
Johannesburg Public Library  
Eastern Cape Library Services, King William's Town  
Central Regional Library, Polokwane  
Central Reference Library, Nelspruit  
Central Reference Collection, Kimberley  
Central Reference Library, Mmabatho

Stats SA also provides a subscription service.

## Electronic services

A large range of data is available via online services. For more detail about our electronic services, contact Stats SA's user information service at (012) 310 8600.

You can visit us on the Internet at: [www.statssa.gov.za](http://www.statssa.gov.za)

## General enquiries

User information services	Telephone number: (012) 310 8600 Email address: <a href="mailto:info@statssa.gov.za">info@statssa.gov.za</a>
Orders/subscription services	Telephone number: (012) 310 8358 Email address: <a href="mailto:magdaj@statssa.gov.za">magdaj@statssa.gov.za</a>
Postal address	Private Bag X44, Pretoria, 0001

*Produced by Stats SA*