

# Statistical release

## P2041

# Mining: Production and sales (Preliminary)

**December 2010**

**Embargoed until:  
10 February 2011  
11:30**

**Enquiries:**

User Information Services  
Tel: (012) 310 8600 / 4892 /8390

**Forthcoming issue:**

January 2011

**Expected release date:**

10 March 2011

**Contents**

**Key results for December 2010** ..... 2

**Detailed results:** ..... 6

Table 1 – Total index of the physical volume of mining production: 2004 – 2010 ..... 6

Table 2 – Annual percentage change in the index of the physical volume of mining production: 2004 – 2010 ..... 6

Table 3 – Total seasonally adjusted index of the physical volume of total mining production: 2004 – 2010 ..... 6

Table 4 – Indices of the physical volume of mining production according to mineral groups and minerals ..... 7

Table 5 – Seasonally adjusted indices of the physical volume of mining production according to mineral groups and minerals ..... 7

Table 6 – Annual percentage change in the three-monthly physical volume of mining production according to mineral groups and minerals ..... 8

Table 7 – Annual percentage change in the cumulative physical volume of mining production according to mineral groups and minerals ..... 8

Table 8 – Total value of mineral sales (R million): 2004 – 2010 ..... 9

Table 9 – Annual percentage change in the total value of mineral sales: 2004 – 2010 ..... 9

Table 10 – Seasonally adjusted total value of mineral sales (R million): 2004 – 2010 ..... 9

Table 11 – Estimated actual value of mineral sales according to mineral groups and minerals ..... 10

Table 12 – Seasonally adjusted value of mineral sales according to mineral groups and minerals ..... 10

Table 13 – Annual percentage change in the three-monthly value of mineral sales according to mineral groups and minerals ..... 11

Table 14 – Annual percentage change in the cumulative value of mineral sales according to mineral groups and minerals ..... 11

**Explanatory notes** ..... 12

**Glossary** ..... 14

**General information** ..... 15

## Key results for December 2010

Table A – Total mining production

Actual estimate	Base : 2005=100			
	December 2010	% change between December 2009 and December 2010	% change between October to December 2009 and October to December 2010	% change between January to December 2009 and January to December 2010
Physical volume of mining production index	99,9	12,2	9,5	6,5

Seasonally adjusted estimate	Base : 2005=100		
	December 2010	% change between November and December 2010	% change between July to September 2010 and October to December 2010
Physical volume of mining production index	98,1	1,7	3,9

Table B – Contribution of the mineral groups and minerals to the total three-monthly seasonally adjusted growth in mining production

Mineral groups and minerals	Base : 2005=100					
	Weights 2005	July to September 2010	October to December 2010	% change between July to September 2010 and October to December 2010	Difference between July to September 2010 and October to December 2010	Contribution (% points) to the % change in total mining production 1/
Gold	17,2	64,3	66,3	3,1	2,0	0,4
Iron ore	5,3	141,7	144,6	2,0	2,9	0,2
Chromium ore	1,3	141,5	168,5	19,1	27,0	0,4
Copper	1,8	83,6	94,3	12,8	10,7	0,2
Manganese ore	1,5	148,8	177,5	19,3	28,7	0,5
PGMs	27,0	98,6	101,4	2,8	2,8	0,8
Nickel	2,8	89,9	92,0	2,3	2,1	0,1
Other metallic minerals	2,8	94,6	95,0	0,4	0,4	0,0
Diamonds	7,6	55,6	56,4	1,4	0,8	0,1
Coal	24,9	105,5	108,5	2,8	3,0	0,8
Building materials	2,1	94,6	107,4	13,5	12,8	0,3
Other non-metallic minerals	5,7	71,4	73,7	3,2	2,3	0,1
<b>Total</b>	<b>100,0</b>	<b>92,5</b>	<b>96,1</b>	<b>3,9</b>	<b>3,6</b>	<b>3,9</b>

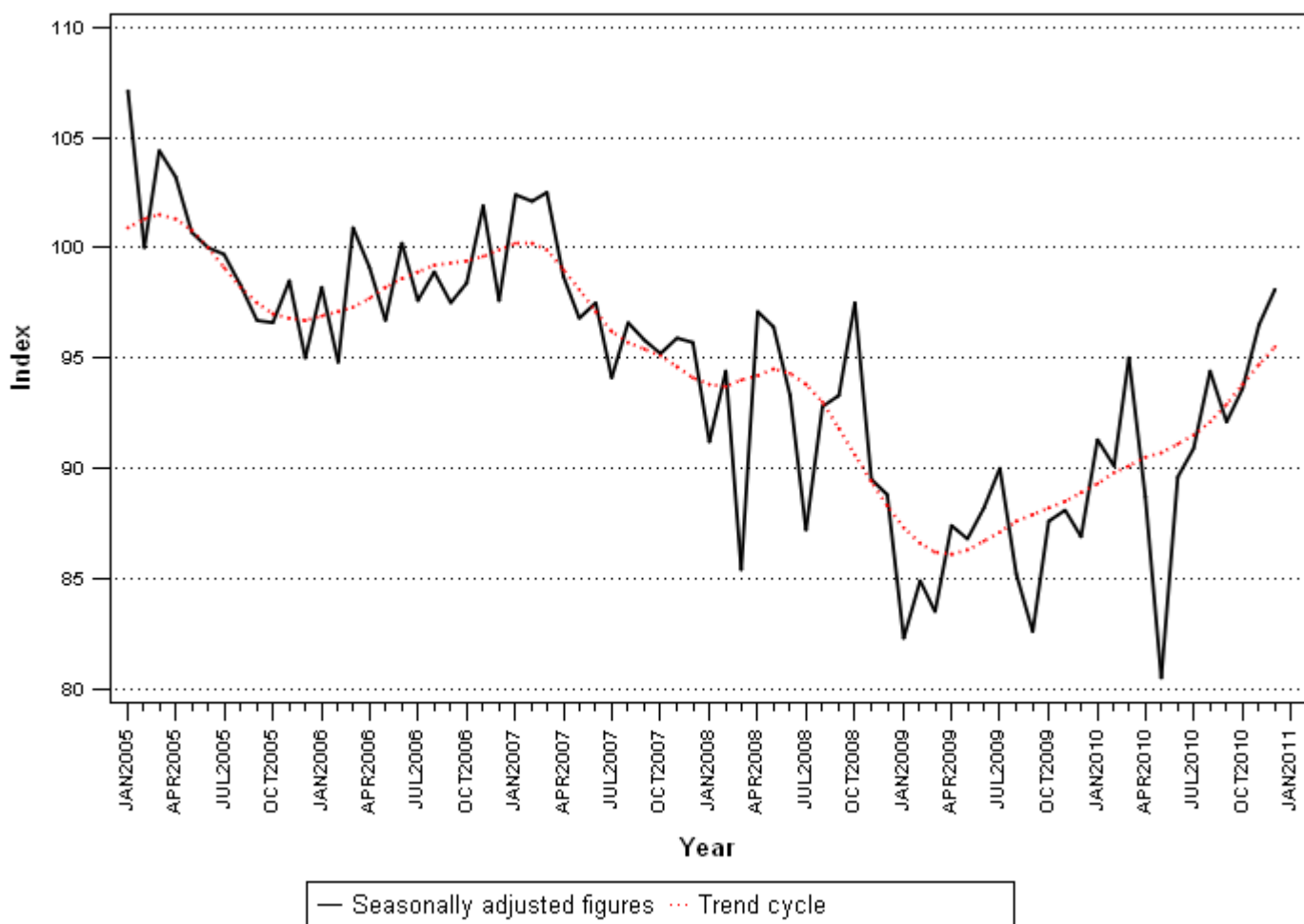
1/ The contribution (percentage points) of a mineral or mineral group to the percentage change in the total seasonally adjusted mining production is calculated by multiplying the difference in the index for the mineral or mineral group by the weight of the mineral or mineral group and then dividing by the previous period's total index. Figures have been rounded off.

### Key findings regarding mining production for December 2010

Seasonally adjusted mining production increased by 3,9% in the fourth quarter of 2010 compared with the third quarter of 2010. All twelve mineral groups and minerals contributed positively to the 3,9% increase, with PGMs and coal being the main contributors with a 0,8 percentage-point contribution each (see Table B).

Actual mining production rose by 9,5% in the fourth quarter of 2010 compared with the fourth quarter of 2009 (see Tables A and 6). A year-on-year increase of 12,2% was recorded in December 2010 compared with a 9,5% increase in November 2010. The index of total mining production was 6,5% higher in 2010 compared with 2009. The 6,5% jump in annual mining production followed decreases of 6,6% in 2009 and 5,6% in 2008 (see Table 2).

**Figure 1 – Monthly indices of physical volume of total mining production (Base: 2005=100)**



**Table C – Total value of mineral sales**

Actual estimate	November 2010	% change between November 2009 and November 2010	% change between September to November 2009 and September to November 2010	% change between January to November 2009 and January to November 2010
	R million			
<b>Total value of mineral sales</b>	26 999,6	34,1	34,5	23,2

Seasonally adjusted estimate	November 2010	% change between October and November 2010	% change between June to August 2010 and September to November 2010
	R million		
<b>Total value of mineral sales</b>	26 755,4	0,1	6,6

**Table D – Contribution of the mineral groups and minerals to the seasonally adjusted three-monthly growth in the total value of mineral sales (R million)**

Mineral groups and minerals	% contribution to total mineral sales during June to August 2010	June to August 2010	September to November 2010	% change between June to August 2010 and September to November 2010	Contribution to the % change in the total value of mineral sales 1/	Difference between June to August 2010 and September to November 2010
		R million	R million			% points
<b>Gold</b>	19,6	14 735,4	14 249,4	-3,3	-0,6	-486,0
<b>Iron ore</b>	15,2	11 475,2	13 023,3	13,5	2,1	1 548,1
<b>Chromium ore</b>	1,9	1 429,2	1 621,8	13,5	0,3	192,6
<b>Copper</b>	1,2	928,1	1 069,9	15,3	0,2	141,8
<b>Manganese ore</b>	3,2	2 427,9	3 231,9	33,1	1,1	804,0
<b>PGMs</b>	24,1	18 118,9	20 289,9	12,0	2,9	2 171,0
<b>Nickel</b>	1,8	1 378,2	1 516,5	10,0	0,2	138,3
<b>Other metallic minerals</b>	2,4	1 781,9	1 805,2	1,3	0,0	23,3
<b>Coal</b>	23,2	17 465,1	17 790,3	1,9	0,4	325,2
<b>Building materials</b>	2,3	1 744,7	1 723,9	-1,2	0,0	-20,8
<b>Other non-metallic minerals</b>	5,0	3 796,1	3 928,0	3,5	0,2	131,9
<b>Total</b>	<b>100,0</b>	<b>75 280,7</b>	<b>80 250,1</b>	<b>6,6</b>	<b>6,6</b>	<b>4 969,4</b>

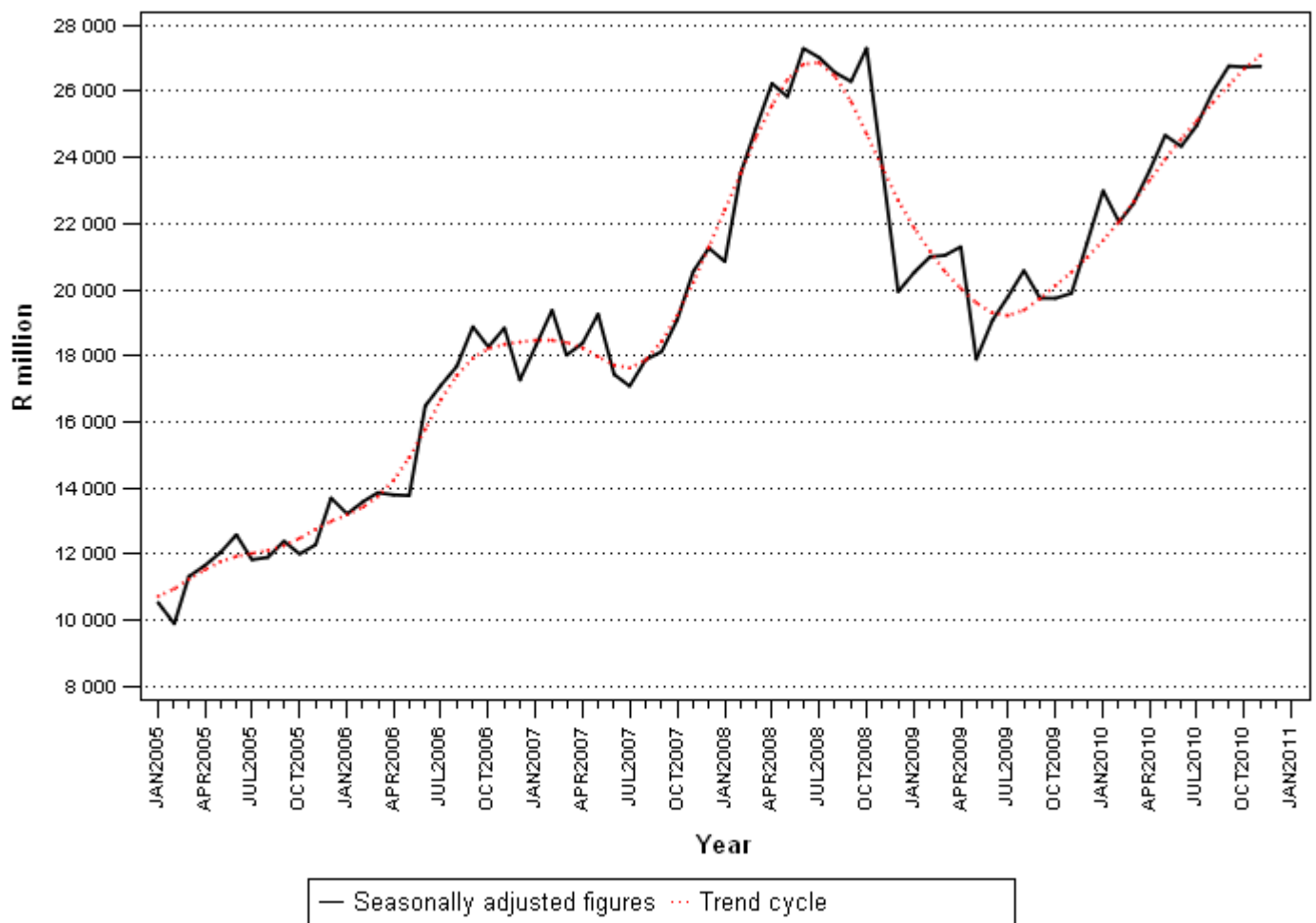
1/ The contribution (percentage points) to the percentage change in sales is calculated by multiplying the percentage change of each mineral with the percentage contribution to total mineral sales during June to August 2010, divided by 100. Figures have been rounded off.

**Key findings regarding mineral sales for November 2010**

The seasonally adjusted value of mineral sales at current prices for the three months ended November 2010 reflected an increase of 6,6% compared with the three months ended August 2010. The increase of 6,6% (R4 969,4 million) was mainly due to increases in the sales value of PGMs (contributing 2,9 percentage points or R2 171,0 million), iron ore (contributing 2,1 percentage points or R1 548,1 million) and manganese ore (contributing 1,1 percentage points or R804,0 million) (see Table D).

The actual value of mineral sales at current prices in the three months ended November 2010 increased by 34,5% compared with the three months ended November 2009. The major contributors to this increase were iron ore (contributing 12,7 percentage points or R7 704,1 million), PGMs (contributing 7,3 percentage points or R4 448,5 million), coal (contributing 3,3 percentage points or R2 020,3 million) and gold (contributing 3,2 percentage points or R1 941,5 million) (see Table 13).

**Figure 2 – Total value of mineral sales**



**PJ Lehohla**  
**Statistician-General**

**Detailed results:**

**Table 1 – Total index of the physical volume of mining production: 2004 – 2010**

Month	Base : 2005=100						
	2004	2005	2006	2007	2008	2009	2010 1/
January	90,2	97,1	87,7	90,1	79,0	71,4	78,3
February	87,6	90,4	85,2	90,8	83,6	74,6	79,9
March	101,1	104,8	101,7	102,9	85,6	83,7	94,7
April	94,1	99,2	94,8	93,9	91,4	81,3	82,5
May	101,2	102,7	98,7	99,0	98,1	88,6	81,9
June	99,5	104,0	104,9	102,6	98,4	93,0	94,4
July	107,0	101,4	99,4	96,0	89,4	92,4	93,6
August	102,4	102,8	103,7	101,6	97,5	89,5	99,4
September	105,1	103,1	105,1	104,5	102,3	90,2	101,7
October	96,9	98,5	100,2	97,0	99,0	89,2	95,2
November	98,6	100,4	104,2	98,6	92,4	91,0	99,6
December	101,5	95,7	98,9	96,8	90,7	* 89,0	99,9
Year	98,8	100,0	98,7	97,8	92,3	86,2	91,8

1/ Preliminary.

\* Revised.

**Table 2 – Annual percentage change in the index of the physical volume of mining production: 2004 – 2010**

Month	Percentage change 2/						
	2004	2005	2006	2007	2008	2009	2010
January	18,3	7,7	-9,7	2,7	-12,4	-9,6	9,7
February	-3,8	3,2	-5,7	6,5	-7,9	-10,8	7,1
March	11,0	3,6	-3,0	1,2	-16,8	-2,2	13,1
April	4,0	5,5	-4,4	-1,0	-2,6	-11,0	1,5
May	5,5	1,4	-3,9	0,3	-0,9	-9,7	-7,6
June	2,3	4,6	0,9	-2,2	-4,1	-5,5	1,5
July	7,9	-5,2	-2,0	-3,4	-6,8	3,3	1,3
August	4,7	0,4	0,9	-2,0	-4,0	-8,2	11,1
September	2,5	-1,9	2,0	-0,6	-2,1	-11,8	12,7
October	-5,5	1,7	1,7	-3,2	2,1	-9,9	6,7
November	1,3	1,9	3,7	-5,3	-6,3	-1,5	9,5
December	-0,2	-5,8	3,4	-2,1	-6,3	-1,9	12,2
Year	3,7	1,3	-1,3	-0,9	-5,6	-6,6	6,5

2/ The annual percentage change is the change in the index of the physical volume of mining production of the relevant month of the current year compared with the corresponding month of the previous year expressed as a percentage.

**Table 3 – Total seasonally adjusted index of the physical volume of total mining production: 2004 – 2010**

Month	Base : 2005=100						
	2004	2005	2006	2007	2008	2009	2010
January	101,1	107,1	98,2	102,4	91,2	82,3	91,3
February	99,0	100,0	94,8	102,1	94,4	84,9	90,1
March	101,1	104,4	100,9	102,5	85,4	83,5	95,0
April	97,4	103,2	99,1	98,7	97,1	87,4	88,7
May	99,4	100,7	96,7	96,8	96,4	86,8	80,5
June	96,6	100,0	100,2	97,5	93,3	88,2	89,6
July	105,9	99,7	97,6	94,1	87,2	90,0	90,9
August	99,9	98,3	98,9	96,6	92,8	85,2	94,4
September	100,3	96,7	97,5	95,8	93,3	82,6	92,1
October	96,7	96,6	98,4	95,2	97,5	87,6	93,6
November	98,6	98,5	101,9	95,9	89,5	88,1	96,5
December	101,3	95,0	97,6	95,7	88,8	86,9	98,1

**Table 4 – Indices of the physical volume of mining production according to mineral groups and minerals**

Mineral groups and minerals	Base : 2005=100					% change between December 2009 and December 2010
	Weights 2005	Average for 2010	December 2009	November 2010 1/	December 2010 1/	
<b>Gold</b>	17,2	64,2	64,9	67,8	66,8	2,9
<b>Iron ore</b>	5,3	148,2	159,3	142,1	151,4	-5,0
<b>Chromium ore</b>	1,3	146,6	98,0	160,5	161,5	64,8
<b>Copper</b>	1,8	81,4	79,2	99,2	99,2	25,3
<b>Manganese ore</b>	1,5	156,1	142,0	188,4	178,9	26,0
<b>PGMs</b>	27,0	94,5	110,8	113,2	123,3	11,3
<b>Nickel</b>	2,8	94,0	85,3	94,1	97,3	14,1
<b>Other metallic minerals</b>	2,8	94,1	65,8	92,3	94,2	43,2
<b>Diamonds</b>	7,6	56,5	38,7	49,4	58,0	49,9
<b>Coal</b>	24,9	104,3	91,0	112,2	99,1	8,9
<b>Building materials</b>	2,1	99,8	74,3	105,4	99,8	34,3
<b>Other non-metallic minerals</b>	5,7	70,4	58,1	70,8	68,9	18,6
<b>Total</b>	<b>100,0</b>	<b>91,8</b>	<b>89,0</b>	<b>99,6</b>	<b>99,9</b>	<b>12,2</b>

1/ Preliminary.

**Table 5 – Seasonally adjusted indices of the physical volume of mining production according to mineral groups and minerals**

Mineral groups and minerals	Base : 2005=100				% change between November and December 2010
	Weights 2005	December 2009	November 2010	December 2010	
<b>Gold</b>	17,2	64,8	66,9	66,8	-0,1
<b>Iron ore</b>	5,3	150,3	148,8	142,6	-4,2
<b>Chromium ore</b>	1,3	114,9	160,8	190,8	18,7
<b>Copper</b>	1,8	76,3	92,8	95,8	3,2
<b>Manganese ore</b>	1,5	131,9	175,3	165,2	-5,8
<b>PGMs</b>	27,0	91,6	104,8	101,8	-2,9
<b>Nickel</b>	2,8	80,1	91,8	91,5	-0,3
<b>Other metallic minerals</b>	2,8	67,0	93,3	96,2	3,1
<b>Diamonds</b>	7,6	47,3	47,6	71,5	50,2
<b>Coal</b>	24,9	100,2	109,8	109,2	-0,5
<b>Building materials</b>	2,1	97,0	98,0	129,7	32,3
<b>Other non-metallic minerals</b>	5,7	61,8	72,8	73,6	1,1
<b>Total</b>	<b>100,0</b>	<b>86,9</b>	<b>96,5</b>	<b>98,1</b>	<b>1,7</b>



**Table 6 – Annual percentage change in the three-monthly physical volume of mining production according to mineral groups and minerals**

Mineral groups and minerals	Base : 2005=100					
	Weights 2005	October to December 2009	October to December 2010	% change between October to December 2009 and October to December 2010	Difference between October to December 2009 and October to December 2010	Contribution (% points) to the % change in total mining production 1/
Gold	17,2	66,1	67,1	1,5	1,0	0,2
Iron ore	5,3	153,0	147,7	-3,5	-5,3	-0,3
Chromium ore	1,3	111,4	162,5	45,9	51,1	0,7
Copper	1,8	71,2	96,2	35,1	25,0	0,5
Manganese ore	1,5	126,3	187,4	48,4	61,1	1,0
PGMs	27,0	99,3	109,4	10,2	10,1	3,0
Nickel	2,8	85,0	94,6	11,3	9,6	0,3
Other metallic minerals	2,8	86,3	95,7	10,9	9,4	0,3
Diamonds	7,6	47,5	55,0	15,8	7,5	0,6
Coal	24,9	101,5	107,8	6,2	6,3	1,7
Building materials	2,1	97,1	103,0	6,1	5,9	0,1
Other non-metallic minerals	5,7	54,1	72,2	33,5	18,1	1,2
<b>Total</b>	<b>100,0</b>	<b>89,7</b>	<b>98,2</b>	<b>9,5</b>	<b>8,5</b>	<b>9,5</b>

1/ The contribution (percentage points) of a mineral or mineral group to the percentage change in the total mining production is calculated by multiplying the difference in the index for the mineral or mineral group by the weight of the mineral or mineral group and then dividing by the previous period's total index. Figures have been rounded off.

**Table 7 – Annual percentage change in the cumulative physical volume of mining production according to mineral groups and minerals**

Mineral groups and minerals	Base : 2005=100					
	Weights 2005	January to December 2009	January to December 2010	% change between January to December 2009 and January to December 2010	Difference between January to December 2009 and January to December 2010	Contribution (% points) to the % change in total mining production 2/
Gold	17,2	67,1	64,1	-4,5	-3,0	-0,6
Iron ore	5,3	139,9	148,2	5,9	8,3	0,5
Chromium ore	1,3	92,4	146,5	58,5	54,1	0,8
Copper	1,8	89,4	81,4	-8,9	-8,0	-0,2
Manganese ore	1,5	99,3	156,1	57,2	56,8	1,0
PGMs	27,0	89,2	94,4	5,8	5,2	1,6
Nickel	2,8	81,6	93,9	15,1	12,3	0,4
Other metallic minerals	2,8	85,3	94,1	10,3	8,8	0,3
Diamonds	7,6	39,2	56,5	44,1	17,3	1,5
Coal	24,9	102,3	104,2	1,9	1,9	0,5
Building materials	2,1	100,1	99,8	-0,3	-0,3	0,0
Other non-metallic minerals	5,7	63,1	70,3	11,4	7,2	0,5
<b>Total</b>	<b>100,0</b>	<b>86,2</b>	<b>91,8</b>	<b>6,5</b>	<b>5,6</b>	<b>6,5</b>

2/ The contribution (percentage points) of a mineral or mineral group to the percentage change in the total mining production is calculated by multiplying the difference in the index for the mineral or mineral group by the weight of the mineral or mineral group and then dividing by the previous period's total index. Figures have been rounded off.

**Table 8 – Total value of mineral sales (R million): 2004 – 2010**

Month	2004	2005	2006	2007	2008	2009	2010 1/
January	9 820,5	9 587,4	11 755,1	15 692,9	17 442,2	17 263,9	19 144,4
February	9 576,1	9 383,8	12 680,8	17 928,6	21 737,4	19 906,3	20 338,2
March	10 396,0	11 477,1	14 179,9	18 555,2	25 894,1	22 093,9	23 597,0
April	9 789,3	11 034,0	13 042,6	17 447,8	25 520,6	20 733,6	23 474,5
May	10 373,3	12 239,8	14 046,8	19 841,6	26 737,6	18 463,5	25 470,7
June	10 856,0	13 360,1	17 809,8	19 033,2	29 881,0	20 337,3	25 879,6
July	10 844,2	12 001,8	17 614,8	17 449,4	27 164,7	20 019,7	25 248,5
August	9 841,7	11 687,6	17 339,2	17 890,4	27 064,3	20 144,0	25 764,1
September	11 693,2	13 524,1	20 586,6	19 619,7	27 830,7	20 737,7	27 792,4
October	10 466,3	12 074,8	18 031,0	18 713,7	27 191,4	19 909,8	26 979,6
November	10 815,6	12 453,2	18 918,2	20 674,4	23 991,0	20 128,7	26 999,6
December	10 585,6	13 994,2	17 584,7	21 590,8	20 259,5	* 21 626,2	
<b>Year</b>	<b>125 057,8</b>	<b>142 817,9</b>	<b>193 589,5</b>	<b>224 437,7</b>	<b>300 714,5</b>	<b>241 364,6</b>	

1/ Preliminary.  
\* Revised.

**Table 9 – Annual percentage change in the total value of mineral sales: 2004 – 2010**

Month	Percentage change 2/						
	2004	2005	2006	2007	2008	2009	2010
January	-0,5	-2,4	22,6	33,5	11,1	-1,0	10,9
February	-6,5	-2,0	35,1	41,4	21,2	-8,4	2,2
March	5,8	10,4	23,5	30,9	39,6	-14,7	6,8
April	5,3	12,7	18,2	33,8	46,3	-18,8	13,2
May	13,9	18,0	14,8	41,3	34,8	-30,9	38,0
June	11,4	23,1	33,3	6,9	57,0	-31,9	27,3
July	4,2	10,7	46,8	-0,9	55,7	-26,3	26,1
August	2,4	18,8	48,4	3,2	51,3	-25,6	27,9
September	16,8	15,7	52,2	-4,7	41,9	-25,5	34,0
October	4,8	15,4	49,3	3,8	45,3	-26,8	35,5
November	13,4	15,1	51,9	9,3	16,0	-16,1	34,1
December	6,9	32,2	25,7	22,8	-6,2	6,7	
<b>Year</b>	<b>6,4</b>	<b>14,2</b>	<b>35,5</b>	<b>15,9</b>	<b>34,0</b>	<b>-19,7</b>	

2/ The annual percentage change is the change in the value of mineral sales of the relevant month of the current year compared with the corresponding month of the previous year expressed as a percentage.

**Table 10 – Seasonally adjusted total value of mineral sales (R million): 2004 – 2010**

Month	2004	2005	2006	2007	2008	2009	2010
January	10 313,8	10 526,0	13 215,1	18 310,8	20 848,6	20 520,7	22 989,9
February	9 939,9	9 890,7	13 584,9	19 374,3	23 538,9	20 996,7	22 036,6
March	10 444,1	11 316,8	13 854,0	18 016,0	24 879,0	21 033,0	22 610,1
April	10 397,8	11 651,2	13 789,4	18 375,6	26 233,8	21 292,6	23 604,2
May	10 357,7	12 040,3	13 767,5	19 256,0	25 833,0	17 889,4	24 664,9
June	10 336,0	12 581,0	16 481,0	17 434,0	27 292,2	19 064,6	24 330,8
July	10 764,6	11 829,1	17 097,3	17 079,0	27 019,9	19 781,2	24 962,1
August	9 906,3	11 899,2	17 678,7	17 876,7	26 563,8	20 575,0	25 987,8
September	10 816,4	12 387,9	18 876,0	18 125,5	26 294,1	19 740,2	26 762,2
October	10 319,2	12 001,4	18 263,0	19 086,9	27 301,6	19 736,7	26 732,5
November	10 772,1	12 276,9	18 837,9	20 549,0	23 615,7	19 888,5	26 755,4
December	10 396,2	13 693,1	17 262,3	21 253,9	19 935,2	21 409,2	

**Table 11 – Estimated actual value of mineral sales according to mineral groups and minerals**

Mineral groups and minerals	Value of sales for 2009	Value of sales for November 2009	Value of sales for October 2010 1/	Value of sales for November 2010 1/	% change between November 2009 and November 2010
	R million	R million	R million	R million	
<b>Gold</b>	48 695,5	4 453,5	4 654,0	4 941,4	11,0
<b>Iron ore</b>	27 131,6	1 316,3	4 673,0	4 570,1	247,2
<b>Chromium ore</b>	* 3 301,1	295,0	579,0	569,0	92,9
<b>Copper</b>	3 858,6	303,1	408,5	220,1	-27,4
<b>Manganese ore</b>	5 586,6	492,9	1 147,0	1 165,1	136,4
<b>PGMs</b>	57 782,1	5 478,9	5 355,8	6 888,6	25,7
<b>Nickel</b>	4 201,2	312,0	533,9	311,2	-0,3
<b>Other metallic minerals</b>	4 494,7	314,3	583,2	530,8	68,9
<b>Coal</b>	* 65 404,7	5 618,7	6 436,0	6 152,8	9,5
<b>Building materials</b>	* 6 885,8	620,1	627,3	617,7	-0,4
<b>Other non-metallic minerals</b>	14 022,1	923,8	1 981,9	1 032,9	11,8
<b>Total</b>	<b>241 364,6</b>	<b>20 128,7</b>	<b>26 979,6</b>	<b>26 999,6</b>	<b>34,1</b>

1/ Preliminary.

\* Revised.

**Table 12 – Seasonally adjusted value of mineral sales according to mineral groups and minerals**

Mineral groups and minerals	Value of sales for November 2009	Value of sales for October 2010	Value of sales for November 2010	% change between October and November 2010
	R million	R million	R million	
<b>Gold</b>	4 248,8	4 435,2	4 675,8	5,4
<b>Iron ore</b>	1 240,0	4 322,8	4 357,2	0,8
<b>Chromium ore</b>	314,9	554,4	611,8	10,4
<b>Copper</b>	314,5	354,9	232,3	-34,5
<b>Manganese ore</b>	574,2	1 202,2	1 343,3	11,7
<b>PGMs</b>	5 597,2	6 481,8	7 068,9	9,1
<b>Nickel</b>	383,4	607,2	392,5	-35,4
<b>Other metallic minerals</b>	295,4	591,2	499,2	-15,6
<b>Coal</b>	5 410,0	5 959,9	5 941,1	-0,3
<b>Building materials</b>	578,4	570,1	576,0	1,0
<b>Other non-metallic minerals</b>	931,7	1 652,8	1 057,3	-36,0
<b>Total</b>	<b>19 888,5</b>	<b>26 732,5</b>	<b>26 755,4</b>	<b>0,1</b>

**Table 13 – Annual percentage change in the three-monthly value of mineral sales according to mineral groups and minerals**

Mineral groups and minerals	% contribution to total mineral sales during September to November 2009	Value of sales for September to November 2009	Value of sales for September to November 2010	% change between September to November 2009 and September to November 2010	Contribution to the % change in the total value of mineral sales 1/	Difference in sales between September to November 2009 and September to November 2010
		R million	R million		% points	R million
Gold	21,1	12 824,9	14 766,4	15,1	3,2	1 941,5
Iron ore	9,1	5 521,4	13 225,5	139,5	12,7	7 704,1
Chromium ore	1,5	934,8	1 666,5	78,3	1,2	731,7
Copper	1,7	1 005,6	1 087,7	8,2	0,1	82,1
Manganese ore	2,4	1 435,3	3 028,8	111,0	2,7	1 593,5
PGMs	25,7	15 629,7	20 078,2	28,5	7,3	4 448,5
Nickel	1,6	958,7	1 409,1	47,0	0,8	450,4
Other metallic minerals	2,0	1 240,2	1 997,2	61,0	1,2	757,0
Coal	27,0	16 406,4	18 426,7	12,3	3,3	2 020,3
Building materials	3,2	1 925,9	1 842,3	-4,3	-0,1	-83,6
Other non-metallic minerals	4,8	2 893,2	4 243,1	46,7	2,2	1 349,9
<b>Total</b>	<b>100,0</b>	<b>60 776,2</b>	<b>81 771,6</b>	<b>34,5</b>	<b>34,5</b>	<b>20 995,4</b>

1/ The contribution (percentage points) to the percentage change in sales is calculated by multiplying the percentage change of each mineral with the percentage contribution to total mineral sales during September to November 2009, divided by 100. Figures have been rounded off.

**Table 14 – Annual percentage change in the cumulative value of mineral sales according to mineral groups and minerals**

Mineral groups and minerals	% contribution to total mineral sales during January to November 2009	Value of sales for January to November 2009	Value of sales for January to November 2010	% change between January to November 2009 and January to November 2010	Contribution to the % change in the total value of mineral sales 2/	Difference in sales between January to November 2009 and January to November 2010
		R million	R million		% points	R million
Gold	20,2	44 460,5	48 323,9	8,7	1,8	3 863,4
Iron ore	11,5	25 218,7	38 986,7	54,6	6,3	13 768,0
Chromium ore	1,4	3 015,2	5 713,8	89,5	1,3	2 698,6
Copper	1,5	3 386,6	3 799,0	12,2	0,2	412,4
Manganese ore	2,1	4 711,6	9 689,8	105,7	2,2	4 978,2
PGMs	23,7	52 176,2	67 364,1	29,1	6,9	15 187,9
Nickel	1,7	3 794,2	5 390,6	42,1	0,7	1 596,4
Other metallic minerals	1,7	3 818,5	6 662,0	74,5	1,3	2 843,5
Coal	27,2	59 815,1	63 579,7	6,3	1,7	3 764,6
Building materials	2,9	6 417,4	6 562,1	2,3	0,1	144,7
Other non-metallic minerals	5,9	12 923,7	14 616,7	13,1	0,8	1 693,0
<b>Total</b>	<b>100,0</b>	<b>219 738,4</b>	<b>270 688,6</b>	<b>23,2</b>	<b>23,2</b>	<b>50 950,2</b>

2/ The contribution (percentage points) to the percentage change in sales is calculated by multiplying the percentage change of each mineral with the percentage contribution to total mineral sales during January to November 2009, divided by 100. Figures have been rounded off.

## Explanatory notes

<b>Introduction</b>	<b>1</b>	Statistics South Africa (Stats SA) publishes monthly information regarding the mining industry on the basis of mining production figures and mineral sales furnished by the Department of Mineral Resources (DMR). This statistical release contains detailed information regarding indices of the physical volume of mining production and the total value of mineral sales according to mining mineral groups and minerals on a monthly basis.
	<b>2</b>	In accordance with international practice, the indices have to be re-based every five years to a new base year. The base year of the index of the physical volume of mining production is currently 2005=100. Both actual and seasonally adjusted figures are presented.
	<b>3</b>	Due to mining production figures being available earlier than mineral sales figures, mining production indices are published one month earlier than mineral sales.
	<b>4</b>	The value of mineral sales is calculated, in general, on a free-on-rail/free-on-board basis.
	<b>5</b>	In order to improve timeliness, some information for the current month may have been estimated due to late response. These estimates will be revised in future statistical release(s) as soon as more up-to-date information is available.
<b>Purpose of the survey</b>	<b>6</b>	The monthly mining production and sales survey is conducted by the Department of Mineral Resources (DMR), covering all mining establishments operating in the South African economy. The results of this survey are used to calculate physical volume of mining production indices in order to estimate the gross domestic product (GDP) and its components, which in turn are used to develop and monitor government policy.
<b>Scope of the survey</b>	<b>7</b>	This survey covers mining establishments conducting activities regarding <ul style="list-style-type: none"> <li>• The extracting, dressing and beneficiating of minerals occurring naturally, for example solids such as coal and ores.</li> </ul>
<b>Classification</b>	<b>8</b>	The 1993 edition of the <i>Standard Industrial Classification of all Economic Activities (SIC)</i> , Fifth Edition, Report No. 09-90-02, was used to classify the statistical units in the survey. The SIC is based on the 1990 <i>International Standard Industrial Classification of all Economic Activities (ISIC)</i> with suitable adaptations for local conditions. Each statistical unit is classified to an industry which reflects the predominant activity of the establishment. Statistics in this publication are presented according to mineral groups and minerals.
<b>Statistical unit</b>	<b>9</b>	The basic statistical unit for the collection of information is the mining establishment. An establishment is the smallest economic unit that functions as a separate entity. Each statistical unit is classified to an industry (see paragraph 8).
<b>Weighting</b>	<b>10</b>	The weights, which are used to aggregate minerals to mineral groups and mineral groups to total mining, are based on the value of production derived from detailed information for 2005 supplied by the Department of Mineral Resources (DMR).

<b>Seasonal adjustment</b>	<b>11</b>	<p>Seasonally adjusted estimates of all items are generated each month, using the X-11 Seasonal Adjustment Program developed by US Bureau of the Census Economic Research and Analyses Division, 1968. Seasonal adjustment is a means of removing the estimated effects of normal seasonal variation from the series so that the effects of other influences on the series can be more clearly recognised. Seasonal adjustment does not aim to remove irregular or non-seasonal influences which may be present in any particular month.</p> <p>Influences that are volatile or unsystematic can still make it difficult to interpret the movement of the series even after adjustment for seasonal variations. This means the month-to-month movements of seasonally adjusted estimates may not be reliable indicators of trend behaviour.</p>																
<b>Reliability of estimates</b>	<b>12</b>	<p>Figures for the latest 12 months are preliminary.</p>																
<b>Historical data</b>	<b>13</b>	<p>More comprehensive detail on the method of calculation and historical data in respect of the production indices according to mining mineral groups for the period January 1998 to September 2009 is available in the statistical release P2041, entitled <i>Mining: Production and sales (Preliminary)</i>, published on 12 November 2009 and is available on the Stats SA website: <a href="http://www.statssa.gov.za">www.statssa.gov.za</a></p>																
<b>Related publications</b>	<b>14</b>	<p>Users may also wish to refer to the following publications which are available from Stats SA -</p> <ul style="list-style-type: none"> <li>• <i>Bulletin of Statistics.</i></li> <li>• <i>SA Statistics.</i></li> </ul>																
<b>Rounding-off of figures</b>	<b>15</b>	<p>The figures in the tables have, where necessary, been rounded off to the nearest digit shown. There may, therefore, be slight discrepancies between the sums of the constituent items and the totals shown.</p>																
<b>Symbols and abbreviations</b>	<b>16</b>	<table border="0"> <tr> <td>DMR</td> <td>Department of Mineral Resources</td> </tr> <tr> <td>GDP</td> <td>Gross domestic product</td> </tr> <tr> <td>ISIC</td> <td>International Standard Industrial Classification</td> </tr> <tr> <td>PGMs</td> <td>Platinum group metals</td> </tr> <tr> <td>SIC</td> <td>Standard Industrial Classification of all Economic Activities</td> </tr> <tr> <td>SNA</td> <td>System of National Accounts</td> </tr> <tr> <td>Stats SA</td> <td>Statistics South Africa</td> </tr> <tr> <td>*</td> <td>Revised</td> </tr> </table>	DMR	Department of Mineral Resources	GDP	Gross domestic product	ISIC	International Standard Industrial Classification	PGMs	Platinum group metals	SIC	Standard Industrial Classification of all Economic Activities	SNA	System of National Accounts	Stats SA	Statistics South Africa	*	Revised
DMR	Department of Mineral Resources																	
GDP	Gross domestic product																	
ISIC	International Standard Industrial Classification																	
PGMs	Platinum group metals																	
SIC	Standard Industrial Classification of all Economic Activities																	
SNA	System of National Accounts																	
Stats SA	Statistics South Africa																	
*	Revised																	

## Glossary

<b>Free-on-rail</b>	Free-on-rail relates to goods sold on the local market where no railage or road transport costs are involved.
<b>Free-on-board</b>	Free-on-board relates to goods destined for the export market. Railage, road transport and docking charges are involved but no charges are made for the transport by sea.
<b>Index of physical volume of mining production</b>	The index of physical volume of mining production or a production index is a statistical measure of the change in the volume of production. The production index of a mineral group is the ratio between the volume of production of a mineral group in a given period and the volume of production of the same mineral group in the base period. The current base period is 2005. The production in the base period is set at 100.
<b>Industry</b>	An industry consists of a group of establishments engaged in the same or similar kinds of economic activity. Industries are defined in the <i>System of National Accounts (SNA)</i> in the same way as in the <i>Standard Industrial Classification (SIC) of all Economic Activities</i> , Fifth Edition of January 1993.
<b>PGMs – Platinum group metals</b>	Platinum group metals include platinum; iridium; osmiridium; palladium; rhodium; ruthenium and osmium.
<b>Sales</b>	Sales are the total value of sales and transfers-out of goods mined by the mining establishments and the amounts received for installation, erection or assembly or other services rendered.
<b>Weight</b>	The weight of a mineral group is the ratio of the sales of a mineral group to the total sales of the mining industry. The weight of a mineral group reflects the importance of the mineral group in the total mining industry. The weights change over time due to quality changes and changes in relative prices. New weights need to be calculated from time to time. The current weights that are being used are based on the total value of mineral sales for 2005.

## General information

Stats SA publishes approximately 300 different statistical releases each year. It is not economically viable to produce them in more than one of South Africa's eleven official languages. Since the releases are used extensively, not only locally but also by international economic and social-scientific communities, Stats SA releases are published in English only.

Stats SA has copyright on this publication. Users may apply the information as they wish, provided that they acknowledge Stats SA as the source of the basic data wherever they process, apply, utilise, publish or distribute the data: and also that they specify that the relevant application and analysis (where applicable) result from their own processing of the data.

## Advanced release calendar

An advanced release calendar is disseminated on [www.statssa.gov.za](http://www.statssa.gov.za)

## Stats SA products

A complete set of Stats SA publications is available at the Stats SA Library and the following libraries:

National Library of South Africa, Pretoria Division  
National Library of South Africa, Cape Town Division  
Natal Society Library, Pietermaritzburg  
Library of Parliament, Cape Town  
Bloemfontein Public Library  
Johannesburg Public Library  
Eastern Cape Library Services, King William's Town  
Central Regional Library, Polokwane  
Central Reference Library, Nelspruit  
Central Reference Collection, Kimberley  
Central Reference Library, Mmabatho

Stats SA also provides a subscription service.

## Electronic services

A large range of data is available via on-line services, CD and computer printouts. For more details about our electronic data services, contact (012) 310 8600/8390/8351/8496/4892/8095.

You can visit us on the Internet at: [www.statssa.gov.za](http://www.statssa.gov.za)

## General enquiries

Telephone number (012) 444 3734 (technical inquiries)  
(012) 310 2965 (technical enquiries)  
(012) 310 8358 (orders)  
(012) 310 4883/ 4885/ 8018 (library)

Fax number: (012) 310 8664 (technical enquiries)

Email: [martin.kohler@dmr.gov.za](mailto:martin.kohler@dmr.gov.za) (technical enquiries)  
[juan-pierret@statssa.gov.za](mailto:juan-pierret@statssa.gov.za) (technical enquiries)  
[info@statssa.gov.za](mailto:info@statssa.gov.za) (user information services)  
[magdaj@statssa.gov.za](mailto:magdaj@statssa.gov.za) (orders)

Postal address: Private Bag X44, Pretoria, 0001

*Produced by Stats SA*