



Mining: production and sales

December 2003

Co-operation between Statistics South Africa (Stats SA), the citizens of the country, the private sector and government institutions is essential for a successful statistical system. Without continued co-operation and goodwill, the timely release of relevant and reliable official statistics will not be possible.

Stats SA publishes approximately three hundred different releases each year. It is not economically viable to produce them in more than one of South Africa's eleven official languages. Since the releases are used extensively, not only locally, but also by international economic and social-scientific communities, Stats SA releases are published in English only.

This data in this statistical release adheres to the Special Data Dissemination Standard (SDDS) of the International Monetary Fund (IMF), which sets out standards on coverage, periodicity and timeliness of data; access by the public; integrity; and quality of the disseminated data.

**Embargoed until: 11:00
Date: 10 February 2004**

NB The compilation of statistics on mining production and sales is currently undergoing a methodological review.

This review may lead to a revision of some of the data in the series.

Key figures regarding mining production as at the end of December 2003

Actual estimates

	December 2003	% change between December 2002 and December 2003	% change between October 2002 to December 2002 and October 2003 to December 2003	% change between January 2002 to December 2002 and January 2003 to December 2003
Index of the physical volume of mining production (2000=100)				
Gold	87,6	-7,6%	-5,9%	-6,3%
Non-gold minerals	128,8	+15,8%	+10,9%	+9,5%
Total	118,2	+10,5%	+7,2%	+5,8%

Seasonally adjusted estimates

	December 2003	% change between November 2003 and December 2003	% change between July 2003 to September 2003 and October 2003 to December 2003
Index of the physical volume of mining production (2000=100)			
Gold	84,2	-2,2%	-1,1%
Non-gold minerals	126,2	+9,9%	-1,1%
Total	115,4	+7,4%	-1,1%

Key findings regarding mining production for the year 2003

Mining production higher than a year ago

Total mining production for the year 2003 increased by 5,8% compared with the year 2002.

The increase of 5,8% in the total mining production for the year 2003 compared with the year 2002 was mainly due to an increase of 9,5% in the production of non-gold minerals whereas the production of gold reflected a decrease of 6,3% during the abovementioned period.

Key findings regarding mining production as at the end of December 2003

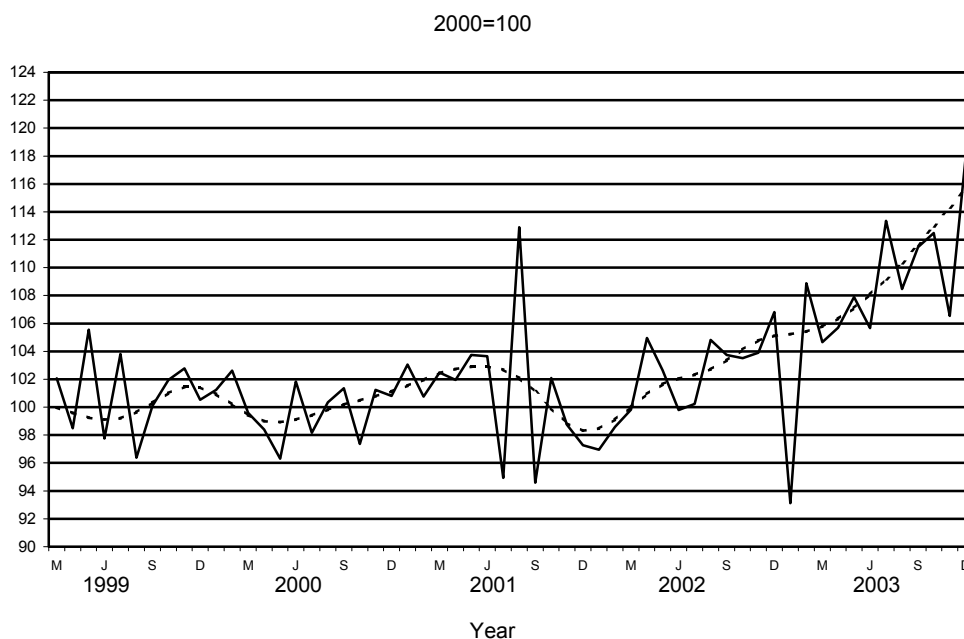
Mining production decreases

The total mining production for the fourth quarter of 2003, after seasonal adjustment, decreased by 1,1% compared with the third quarter of 2003. This decrease was due to a seasonally adjusted decrease of 1,1% in gold production and 1,1% in the production of non-gold minerals during the fourth quarter of 2003 compared with the third quarter of 2003. The seasonally adjusted decrease of 1,1% in the production of non-gold minerals was mainly due to the decrease in the production of Platinum Group Metals (PGM) (-1,4 percentage points) followed by other metals (-0,6 of a percentage point) and iron ore (-0,1 of a percentage point).

Variations in statistics on Platinum Group Metals

The production process in Platinum Group Metals (PGM), for a variety of reasons, is not a linear one, which causes month-to-month variations in output. This is particularly relevant in December.

Figure 1 - Indices of physical volume of total mining production including gold



Source: Stats SA _____ Seasonally adjusted - - - - - Trend cycle

Key figures regarding mineral sales as at the end of November 2003

Actual estimates

	November 2003 R million	% change between November 2002 and November 2003	% change between September 2002 to November 2002 and September 2003 to November 2003	% change between January 2002 to November 2002 and January 2003 to November 2003
Mineral sales				
Gold	2 352,3	-23,6%	-24,2%	-21,8%
Non-gold minerals	7 180,6	-10,0%	-15,7%	-13,4%
Total	9 532,9	-13,8%	-18,2%	-16,0%

Seasonally adjusted estimates

	November 2003 R million	% change between October 2003 and November 2003	% change between June 2003 to August 2003 and September 2003 to November 2003
Mineral sales			
Gold	2 462,1	+2,6%	-5,1%
Non-gold minerals	7 372,1	-0,0%	+1,7%
Total	9 834,2	+ 0,6%	-0,1%

Key findings regarding mineral sales as at the end of November 2003

Mineral sales decrease

The seasonally adjusted value of mineral sales at current prices for the three months ended November 2003 reflected a slight decrease of 0,1% compared with the previous three months. Furthermore, the actual value of mineral sales at current prices for the three months ended November 2003 reflected a decrease of 18,2% compared with the corresponding three months of 2002.

The decrease of 0,1% in the seasonally adjusted value of mineral sales for the three months ended November 2003 compared with the previous three months can be attributed to a decrease of 5,1% (-R411,6 million) in sales of gold minerals. This decrease was partially counteracted by increases in sales of non-gold minerals of 1,7% (+R369,6 million) during the same period.

The major contributors to the decrease of 18,2% in the actual value of mineral sales at current prices for the three months ended November 2003 compared with the three months ended November 2002 were gold (-7,1 percentage points or -R2 522,2 million), other non-metallic minerals (-3,7 percentage points or -R1 333,5 million), PGM's ^{1/} (-3,6 percentage points or -R1 299,7 million) and coal (-2,0 percentage points or -R716,5 million) (see table A).

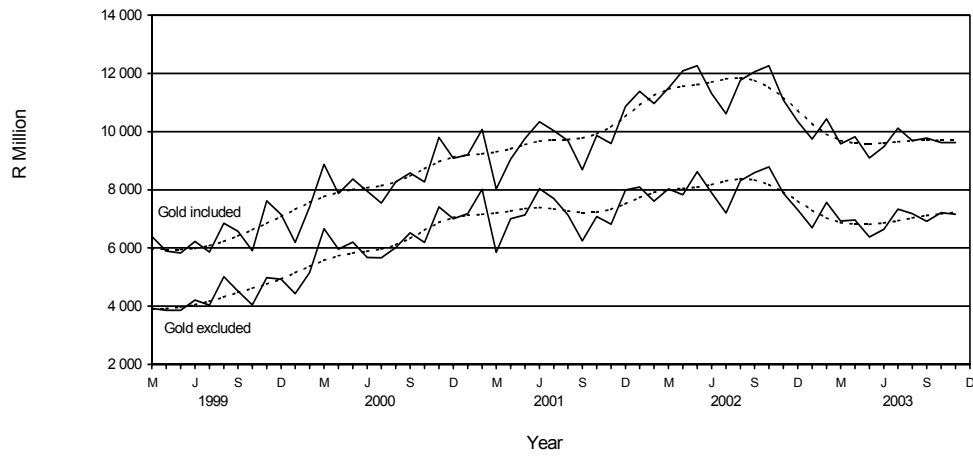
Table A - Contribution of the mining divisions to the total value of mineral sales

Mining division	Percentage contribution to total mineral sales during September 2002 to November 2002	Percentage change between September 2002 to November 2002 and September 2003 to November 2003	Contribution (percentage points) to the percentage change in the total value of mineral sales ^{2/}	Difference in sales of mining divisions between September 2002 to November 2002 and September 2003 to November 2003 R million
Gold	29,2	-24,2	-7,1	-2 522,2
Non-gold minerals				
Iron ore	3,2	-8,7	-0,3	-98,8
Copper	1,7	-30,9	-0,5	-187,7
Manganese ore	1,0	0,3	0,0	+1,2
Chromium	0,8	7,4	0,1	+21,4
PGM's ^{1/}	25,3	-14,4	-3,6	-1 299,7
Nickel	2,1	0,0	0,0	0,0
Other metallic minerals	3,1	-36,9	-1,3	-412,9
Coal	19,5	-10,3	-2,0	-716,5
Building materials	2,7	5,9	0,2	+53,7
Other non-metallic	11,4	-32,8	-3,7	-1 333,5
Total non-gold minerals	70,8	-15,7	-11,1	-3 972,8
Total minerals	100,0	-18,2	-18,2	-6 495,0

^{1/} PGM's - Platinum Group Metals includes platinum; tridium; osmiridium; palladium; rhodium; ruthenium and osmium.

^{2/} The contribution to the percentage change in sales is calculated by multiplying the quarterly percentage change of each mineral with the percentage contribution to total mineral sales during September 2002 to November 2002, divided by 100.

Figure 2 - Total value of mineral sales including gold



Source: Stats SA

— Seasonally adjusted - - - - - Trend cycle

pp
P J Lehohla
Statistician-General

Contents

Notes	6
Tables	
Table 1 Index of the physical volume of total mining production including gold (Base 2000=100).....	7
Table 2 Index of the physical volume of mining production excluding gold (Base 2000=100).....	7
Table 3 Indices of physical volume of mining production according to mining divisions, mineral groups and minerals (Base 2000=100).....	8
Table 4 Total value of mineral sales including gold (R million).....	9
Table 5 Total value of mineral sales excluding gold (R million)	9
Table 6 Total value of mineral sales according to mining divisions, mineral groups and minerals (R million)	10
Explanatory notes	11
Glossary	13
General information	14

Notes

Forthcoming issues	Issue	Expected date of publication
	January 2004	9 March 2004
	February 2004	6 April 2004
	March 2004	11 May 2004
	April 2004	8 June 2004
	May 2004	6 July 2004
	June 2004	10 August 2004
	July 2004	7 September 2004
	August 2004	12 October 2004
	September 2004	9 November 2004
	October 2004	7 December 2004
	November 2004	11 January 2005
	December 2004	10 February 2005

Purpose of the survey

The monthly mining production and sales survey is a survey conducted by the Minerals Bureau, covering all mining establishments operating in the South African economy. The results of this survey are used to calculate physical volume of mining production indices in order to estimate the gross domestic product (GDP) and its components, which in turn are used to develop and monitor Government policy.

Table 1 - Index of the physical volume of mining production including gold (Base 2000=100)

Month	1997	1998	1999	2000	2001	2002	2003*
Actual indices							
J	97,6	99,1	92,6	93,8	95,0	89,0	85,4
F	103,1	101,5	99,0	99,3	96,8	94,2	103,6
M	101,8	103,8	104,8	100,0	102,3	99,1	103,5
A	100,9	99,8	96,2	95,0	98,9	102,0	102,9
M	106,3	100,3	104,5	95,7	103,6	102,9	108,4
J	110,2	108,8	103,7	106,8	108,4	104,1	110,1
J	105,0	101,8	102,5	96,9	93,5	99,0	112,0
A	107,5	104,1	98,4	102,1	115,2	107,2	111,1
S	107,1	104,2	104,4	104,9	98,4	108,1	116,2
O	105,0	109,3	104,2	100,0	105,1	106,7	116,0
N	108,9	106,8	107,0	105,5	102,6	107,5	110,0
D	102,8	103,2	100,9	100,2	97,2	107,0	118,2 1/
Year	104,7	103,6	101,5	100,0	101,4	102,2	108,1
Seasonally adjusted indices							
J	100,1	101,8	98,0	102,4	104,3	97,4	93,1
F	99,5	101,1	100,0	103,4	101,3	99,2	110,1
M	96,5	99,7	101,7	99,2	101,8	98,8	103,6
A	101,2	101,9	97,1	98,3	101,9	105,1	105,6
M	103,8	98,5	103,7	95,6	103,5	102,7	108,1
J	102,6	103,5	98,0	101,6	103,1	99,3	104,8
J	102,2	98,9	103,7	98,7	95,2	100,7	115,1
A	101,7	98,7	96,0	100,1	112,7	104,6	108,4
S	100,6	99,8	99,7	103,8	96,9	106,1	114,0
O	99,0	105,2	100,3	96,1	100,6	102,3	110,9
N	102,1	101,2	102,9	101,8	99,5	104,8	107,4
D	100,0	101,9	100,5	99,4	94,8	104,3	115,4

Table 2 - Index of the physical volume of mining production excluding gold (Base 2000=100)

Month	1997	1998	1999	2000	2001	2002	2003*
Actual indices							
J	94,0	94,5	90,6	94,4	98,3	89,6	86,0
F	97,3	97,8	96,1	96,4	98,6	95,8	109,9
M	92,0	101,5	98,6	97,9	104,4	101,0	108,5
A	95,9	98,6	91,6	94,1	102,2	105,3	109,0
M	100,8	99,5	105,1	96,6	108,9	107,0	116,5
J	107,7	106,4	100,7	107,5	112,5	107,3	118,6
J	101,3	99,4	103,5	97,6	93,7	102,4	120,7
A	101,5	100,3	97,1	101,7	124,5	111,2	119,2
S	98,7	99,7	100,6	105,1	99,7	111,4	125,4
O	99,4	110,8	104,6	100,6	110,2	111,9	126,3
N	99,9	104,5	107,7	107,4	106,8	113,3	118,0
D	94,6	96,3	97,2	100,8	97,7	111,2	128,8 1/
Year	98,6	100,8	99,5	100,0	104,8	105,6	115,6
Seasonally adjusted indices							
J	95,8	96,5	95,5	102,8	108,0	98,3	93,9
F	94,5	98,3	98,0	101,0	103,8	101,6	117,7
M	89,7	98,0	98,1	97,9	104,6	101,4	109,2
A	96,5	100,3	93,3	97,4	105,4	108,6	111,8
M	98,6	96,3	102,5	95,1	107,5	105,7	114,9
J	99,2	101,3	95,6	101,9	106,6	102,0	112,5
J	98,2	95,5	103,7	98,9	94,9	103,8	124,1
A	97,2	95,7	95,5	100,1	122,0	108,6	116,4
S	95,4	97,6	98,0	105,6	99,4	110,4	124,0
O	94,1	105,0	99,4	95,4	104,2	106,1	119,5
N	96,0	99,3	103,0	103,2	103,0	110,0	114,8
D	95,8	99,1	99,8	101,1	95,8	108,9	126,2

* Revised

1/ Preliminary

Table 3 - Indices of physical volume of mining production according to mining divisions, mineral groups and minerals (Base 2000=100)

Minerals	Weights	Actual indices						Seasonally adjusted indices		
		2003			2002			2003		
		2003			2002			2003		
		Dec.	Nov.	* Dec.	Dec.	Nov.	Dec.	Dec.	Nov.	Dec.
Total, gold included	100,0	108,1	118,2	110,0	107,0	115,4	107,4	104,3		
Total, gold excluded	74,3	115,6	128,8	118,0	111,2	126,2	114,8	108,9		
Gold	25,7	86,6	87,6	86,8	94,8	84,2	86,1	91,1		
Iron ore	3,1	114,6	115,6	111,2	106,4	117,2	108,6	108,4		
Chrome	1,1	112,1	108,8	116,8	101,2	117,4	113,9	109,5		
Copper	1,6	88,5	89,2	92,0	97,6	89,4	89,4	96,7		
Manganese ore	1,3	93,4	106,4	98,4	97,6	106,6	93,7	98,2		
PGM's 2/	27,6	132,5	170,0	132,4	143,6	144,0	129,5	121,7		
Nickel	2,0	120,5	131,6	127,2	110,8	124,5	124,4	106,1		
Other metallic minerals	2,9	84,2	69,6	71,2	101,2	67,0	72,8	97,8		
Diamonds	8,4	119,1	140,0	135,6	96,4	158,9	132,7	110,3		
Coal	20,0	106,8	96,4	109,6	85,6	112,0	105,2	99,0		
Building materials	2,6	94,2	86,8	97,6	80,4	102,7	93,9	95,4		
Other non-metallic minerals	3,8	87,8	88,0	86,0	88,4	93,6	84,1	94,5		

1/ Preliminary

2/ PGM's - Platinum Group Metals includes platinum; tridium; osmiridium; palladium; rhodium; ruthenium and osmium.

* Revised

Table 4 - Total value of mineral sales including gold (R million)

Month	1997	1998	1999	2000	2001	2002	2003*
Actual values							
J	6 447,8	5 577,2	6 098,8	6 244,1	9 241,5	11 387,0	9 747,2
F	5 159,4	5 316,4	5 763,6	7 115,7	9 711,7	10 634,4	10 145,9
M	4 936,6	5 547,6	6 445,1	8 958,5	8 134,9	11 639,2	9 701,8
A	5 576,8	5 662,1	5 706,5	7 521,3	8 554,2	11 194,9	9 112,1
M	5 309,0	5 433,1	5 702,9	8 222,7	9 675,9	12 145,3	9 004,5
J	5 445,9	6 017,2	6 391,3	8 222,5	10 640,7	11 637,2	9 732,8
J	5 780,3	6 669,1	5 996,1	7 640,3	10 146,3	10 779,9	10 335,9
A	5 546,2	6 318,5	6 852,9	8 223,4	9 586,4	11 633,5	9 534,2
S	5 568,2	6 066,8	6 548,3	8 268,9	8 711,5	12 115,1	9 816,7
O	6 026,1	6 446,0	6 005,9	8 317,6	9 999,6	12 514,2	9 844,1
N	5 130,8	5 994,9	7 573,0	9 828,5	9 627,7	11 059,4	9 532,9 1/
D	5 386,9	6 343,0	7 346,9	9 474,9	11 327,7	10 764,4	
Year	66 314,0	71 391,9	76 431,3	98 338,4	115 358,1	137 504,5	
Seasonally adjusted values							
J	6 193,0	6 068,0	5 986,6	6 161,8	9 148,5	11 346,6	9 574,6
F	5 373,6	5 950,3	5 883,0	7 170,3	9 770,3	10 704,7	10 107,7
M	4 933,4	5 589,2	6 487,4	9 463,7	8 089,1	11 601,8	9 885,4
A	5 606,5	6 543,2	5 912,2	7 765,0	8 958,2	11 941,1	9 691,9
M	5 362,2	5 537,4	5 814,6	8 255,9	9 681,7	12 093,8	8 923,5
J	5 489,7	5 941,4	6 272,0	7 943,4	10 338,7	11 263,7	9 431,9
J	5 552,9	6 427,4	5 847,5	7 469,3	10 233,0	10 714,8	10 473,9
A	5 470,9	6 269,0	6 803,4	8 277,2	9 596,3	11 693,7	9 645,7
S	5 629,6	6 136,2	6 774,6	8 615,5	8 718,2	12 259,5	9 902,9
O	5 691,1	6 284,4	5 953,4	8 406,7	9 986,7	12 436,3	9 772,4
N	5 285,5	6 128,4	7 696,7	9 994,6	9 807,0	11 367,0	9 834,2
D	5 527,1	6 310,6	7 136,7	9 015,8	10 807,4	10 342,8	

Table 5 - Total value of mineral sales excluding gold (R million)

Month	1997	1998	1999	2000	2001	2002	2003*
Actual values							
J	3 394,4	3 737,4	4 033,9	4 476,9	7 181,9	8 002,3	6 612,3
F	3 280,4	3 579,7	3 801,6	4 963,8	7 720,8	7 368,2	7 339,8
M	3 172,6	3 713,2	3 938,7	6 688,4	5 912,0	8 110,9	7 000,4
A	3 441,4	3 779,7	3 802,4	5 790,2	6 748,0	7 481,9	6 617,8
M	3 245,0	3 677,1	3 826,7	6 166,9	7 139,7	8 619,3	6 371,1
J	3 663,5	4 121,5	4 413,3	5 908,5	8 245,9	8 035,5	6 730,9
J	3 429,2	4 285,6	4 061,6	5 700,6	7 779,6	7 344,7	7 534,0
A	3 555,0	4 122,2	4 956,0	5 892,6	6 942,5	8 065,2	6 958,3
S	3 573,9	3 857,5	4 480,8	6 479,6	6 219,3	8 562,1	6 888,8
O	3 566,2	4 175,0	3 947,8	6 047,1	6 971,4	8 711,8	7 213,4
N	3 332,1	3 955,1	5 038,1	7 529,4	6 953,1	7 981,8	7 180,6 1/
D	3 583,1	4 092,9	5 139,7	7 422,4	8 532,3	7 834,8	
Year	41 236,8	47 096,9	51 440,6	73 066,4	86 346,5	96 118,5	
Seasonally adjusted values							
J	3 240,4	4 256,5	3 940,9	4 407,3	7 123,9	8 048,5	6 537,2
F	3 296,6	4 071,6	3 801,6	4 919,7	7 715,3	7 346,6	7 228,8
M	3 134,5	3 745,7	4 008,3	7 246,7	5 919,2	8 145,7	7 234,9
A	3 476,0	4 611,1	3 878,7	5 848,2	6 912,3	7 686,5	6 821,8
M	3 241,0	3 705,7	3 844,6	6 102,1	7 039,6	8 446,1	6 208,4
J	3 540,3	3 939,5	4 257,4	5 668,5	8 037,0	7 843,9	6 586,5
J	3 425,4	4 228,9	4 024,8	5 591,3	7 898,6	7 299,1	7 684,8
A	3 539,5	4 138,0	4 970,0	6 019,2	7 040,8	8 232,8	7 147,6
S	3 648,4	3 936,8	4 716,9	6 557,1	6 275,2	8 792,0	7 044,0
O	3 552,2	4 275,2	4 093,3	6 326,2	7 203,0	8 954,1	7 372,4
N	3 363,6	3 976,1	5 063,8	7 613,6	7 037,5	8 164,4	7 372,1
D	3 677,1	4 036,7	4 915,7	6 936,0	7 942,0	7 310,2	

* Revised

1/ Preliminary

Table 6 - Total value of mineral sales according to mining divisions, mineral groups and minerals
(R million)

Minerals	Actual value				Seasonally adjusted value		
	2003	2003		2002	2003		2002
		Nov.	Oct. *	Nov.	Nov.	Oct.	Nov.
Total, gold included	115 967,3	9 532,9	9 844,1	11 059,4	9 834,2	9 772,4	11 367,0
Total, gold excluded	83 449,2	7 180,6	7 213,4	7 981,8	7 372,1	7 372,4	8 164,4
Gold	32 518,4	2 352,3	2 630,8	3 077,6	2 462,1	2 400,0	3 202,6
Iron ore	4 191,4	333,7	346,3	443,8	310,9	373,9	413,1
Chrome	1 157,8	104,2	104,4	102,1	96,6	114,5	94,8
Copper	1 616,8	145,5	162,2	205,9	126,9	141,3	179,0
Manganese ore	1 469,8	156,8	116,6	96,8	174,0	151,5	106,5
PGM's 2/	29 162,6	2 451,4	2 495,7	3 129,8	2 659,3	2 704,0	3 393,7
Nickel	2 719,8	273,6	281,4	242,8	276,3	296,9	242,9
Other metallic minerals	2 996,1	267,8	281,8	291,6	254,4	260,9	272,9
Coal	25 202,0	2 141,4	2 095,5	2 145,0	2 176,9	2 047,5	2 168,7
Building materials	3 435,1	268,4	341,1	313,8	260,5	305,5	308,3
- Granite or norite	765,3	37,4	96,2	96,8	38,7	83,0	100,8
- Lime and limestone	1 203,6	101,1	109,3	101,5	98,2	100,3	98,5
- Other building materials	1 466,2	129,9	135,6	115,6	123,6	122,2	109,0
Other non-metallic minerals	11 498,0	1 037,8	988,4	1 010,1	1 036,3	976,4	984,5

1/ Preliminary

2/ PGM's - Platinum Group Metals includes platinum; tridium; osmiridium; palladium; rhodium; ruthenium and osmium.

* Revised

Explanatory notes

- Introduction**
- 1 Statistics South Africa (Stats SA) publishes monthly information regarding the mining industry on the basis of mining production figures and mineral sales furnished by the Minerals Bureau, Department of Minerals and Energy. This statistical release contains detailed information regarding indices of the physical volume of mining production and the total value of mineral sales according to mining divisions and mineral groups on a monthly basis.
 - 2 In accordance with international practice, the indices have to be re-based every five years to a new base year. The base year of the index of the physical volume of mining production is currently 2000=100. Both actual and seasonally adjusted figures are presented.
 - 3 Due to mining production figures being available earlier than mineral sales figures, mining production indices are published one month earlier than mineral sales.
 - 4 The value of mineral sales is calculated, in general, on a free-on-rail/free-on-board basis.
 - 5 In order to improve timeliness, some information for the current month may have been estimated due to late response. These estimates will be revised in future statistical release(s) as soon as more up-to-date information is available.
- Scope of the survey**
- 6 This survey covers mining establishments conducting activities regarding -
 - the extracting, dressing and beneficiating of minerals occurring naturally, for example solids such as coal and ores.
- Classification**
- 7 The 1993 edition of the *Standard Industrial Classification of all Economic Activities (SIC)*, Fifth Edition, Report No. 09-90-02, was used to classify the statistical units in the survey. The SIC is based on the 1990 *International Standard Industrial Classification of all Economic Activities (ISIC)* with suitable adaptations for local conditions. Statistics in this publication are presented at SIC division, major group and subgroup level. Each statistical unit is classified to an industry which reflects the predominant activity of the establishment.
- Statistical unit**
- 8 The basic statistical unit for the collection of information is the mining establishment. An establishment is the smallest economic unit that functions as a separate entity. Each statistical unit is classified to an industry (see paragraph 7).
- Weighting**
- 9 The weights which are used to aggregate minerals to mineral groups and mineral groups to total mining, are based on the value of production derived from detailed information for 2000 supplied by the Minerals Bureau, Department of Minerals and Energy.
- Seasonal adjustment**
- 10 Seasonally adjusted estimates of all items are generated each month, using the X-11 Seasonal Adjustment Program developed by US Bureau of the Census Economic Research and Analyses Division, 1968. Seasonal adjustment is a means of removing the estimated effects of normal seasonal variation from the series so that the effects of other influences on the series can be more clearly recognised. Seasonal adjustment does not aim to remove irregular or non-seasonal influences which may be present in any particular month.
- Influences that are volatile or unsystematic can still make it difficult to interpret the movement of the series even after adjustment for seasonal variations. This means the month-to-month movements of seasonally adjusted estimates may not be reliable indicators of trend behaviour.

Reliability of estimates	11	Estimates are subject to sampling and non-sampling errors. Figures for the latest month are preliminary.
Historical data	12	More comprehensive detail on the method of calculation and historical data in respect of the production indices according to mining mineral groups for the period January 1990 to November 2002 is available in statistical release P2041.1, entitled <i>Mining statistics: Indices of the physical volume of mining production, Base: 2000=100, January 1990 to November 2002</i> , published on 11 February 2003 on the Stats SA website www.statssa.gov.za .
Related publications	13	Users may also wish to refer to the following publications which are available from Stats SA - <ul style="list-style-type: none"> • <i>Bulletin of Statistics</i>. • <i>SA Statistics</i>.
Unpublished statistics	14	In some cases Stats SA can also make available statistics which are not published. The statistics can be made available via: computer printouts or diskette or CD. Generally a charge is made for providing unpublished statistics.
Rounding-off of figures	15	The figures in the tables have, where necessary, been rounded off to the nearest digit shown. There may, therefore, be slight discrepancies between the sums of the constituent items and the totals shown.

Glossary

Free-on-rail	Free-on-rail relates to goods sold on the local market where no railage or road transport costs are involved.
Free-on-board basis	Free-on-board relates to goods destined for the export market. Railage, road transport and docking charges are involved but no charges are made for the transport by sea.
Index of physical volume of mining production	The index of physical volume of mining production or a production index is a statistical measure of the change in the volume of production. The production index of a mineral group is the ratio between the volume of production of a mineral group in a given period and the volume of production of the same mineral group in the base period. The current base period is 2000. The production in the base period is set at 100.
Industry	An industry consists of a group of establishments engaged in the same or similar kinds of economic activity. Industries are defined in the <i>System of National Accounts (SNA)</i> in the same way as in the <i>Standard Industrial Classification (SIC) of all Economic Activities</i> , Fifth Edition of May 1993.
Sales	Sales are the total value of sales and transfers-out of goods mined by the mining establishments and the amounts received for installation, erection or assembly or other services rendered.
Weight	The weight of a mineral group is the ratio of the sales of a mineral group to the total sales of the mining industry. The weight of a mineral group reflects the importance of the mineral group in the total mining industry. The weights change over time due to quality changes and changes in relative prices. New weights need to be calculated from time to time.

General information

Stats SA publishes approximately 300 different statistical releases each year. It is not economically viable to produce them in more than one of South Africa's eleven official languages. Since the releases are used extensively, not only locally but also by international economic and social-scientific communities, Stats SA releases are published in English only.

Stats SA has copyright on this publication. Users may apply the information as they wish, provided that they acknowledge Stats SA as the source of the basic data wherever they process, apply, utilise, publish or distribute the data; and also that they specify that the relevant application and analysis (where applicable) result from their own processing of the data.

Advanced release calendar

An advanced release calendar is disseminated on www.statssa.gov.za

Stats SA products

A complete set of Stats SA publications is available in the Stats SA Library, and in the following public libraries:

National Library of South Africa, Pretoria Division
 National Library of South Africa, Cape Town Division
 Natal Society Library, Pietermaritzburg
 Library of Parliament, Cape Town
 Bloemfontein Public Library
 Johannesburg Public Library
 Eastern Cape Library Services, King William's Town
 Central Regional Library, Polokwane
 Central Reference Library, Nelspruit
 Central Reference Collection, Kimberley
 Central Reference Library, Mmabatho

Stats SA also provides a subscription service.

Electronic services

A large range of data are available via on-line services, diskette, CD and computer printouts. For more details about our electronic data services, contact (012) 310 8600/8390/8351/4892/8496/8095.

You can visit us on the Internet at: www.statssa.gov.za

Enquiries

Telephone number: (012) 310 8600/8390/8351/4892/8496/8095 (user information services)
 (012) 310 8220/310 8228 (technical enquiries)
 (012) 310 8161 (orders)
 (012) 310 8490 (library)

Fax number: (012) 310 8332 (technical enquiries)

e-mail: Thabelom@statssa.gov.za
Mpelim@statssa.gov.za

Postal address: Private Bag X44, Pretoria, 0001

Produced by Stats SA