



stats sa

Department:
Statistics South Africa
REPUBLIC OF SOUTH AFRICA

Private Bag X44, Pretoria, 0001, South Africa, ISibalo House, Koch Street, Salvokop, Pretoria, 0002
www.statssa.gov.za, info@statssa.gov.za, Tel +27 12 310 8911

STATISTICAL RELEASE

P2041

Mining: Production and sales (Preliminary)

August 2023

The results in the next publication (September 2023) will be updated with weights based on national accounts value added data for 2018–2020. Currently, the weights for the mineral groups and minerals are calculated based on national accounts value added data for 2017–2019.

Embargoed until:
12 October 2023
11:30

ENQUIRIES:
Juan-Pierre Terblanche
Tel: (012) 310 2965

FORTHCOMING ISSUE:
September 2023

EXPECTED RELEASE DATE:
9 November 2023



Contents

Production: results for August 2023	2
Table A – Key growth rates in the volume of mining production.....	2
Table B – Seasonally adjusted index of the volume of mining production for the latest three months by mineral group and mineral (Base: 2019=100).....	2
Figure 1 – Volume of mining production (Base: 2019=100)	3
Figure 2 – Volume of mining production (Base: 2019=100): year-on-year percentage change.....	3
Sales: results for August 2023	4
Table C – Key growth rates in mineral sales at current prices	4
Figure 3 – Total value of mineral sales at current prices	4
Tables	5
Table 1 – Index of the volume of mining production (Base: 2019=100)	5
Table 2 – Year-on-year percentage change in the volume of mining production	5
Table 3 – Seasonally adjusted volume of total mining production	5
Table 4 – Index of the volume of mining production by mineral group and mineral (Base: 2019=100)	6
Table 5 – Seasonally adjusted index of the volume of mining production by mineral group and mineral (Base: 2019=100)	6
Table 6 – Year-on-year percentage change in the volume of mining production by mineral group and mineral	7
Table 7 – Contribution of each mineral group and mineral to the year-on-year percentage change in the volume of mining production (percentage points)	7
Table 8 – Mineral sales at current prices (R million).....	8
Table 9 – Year-on-year percentage change in mineral sales at current prices	8
Table 10 – Seasonally adjusted total mineral sales at current prices	8
Table 11 – Mineral sales at current prices by mineral group and mineral (R million).....	9
Table 12 – Year-on-year percentage change in mineral sales at current prices by mineral group and mineral	9
Table 13 – Contribution of each mineral group and mineral to the year-on-year percentage change in mineral sales at current prices (percentage points)	9
Survey information	10
Technical notes	11
Glossary	12
Technical enquiries	12
General information	13

Production: results for August 2023

Table A – Key growth rates in the volume of mining production

	Mar-23	Apr-23	May-23	Jun-23	Jul-23	Aug-23
Year-on-year % change, unadjusted	-1,2	2,4	-0,8	0,7	-4,4	-2,5
Month-on-month % change, seasonally adjusted	7,1	0,9	-3,3	0,8	-1,7	0,8
3-month % change, seasonally adjusted ¹	1,5	0,4	3,0	1,1	-0,7	-2,0

¹ Percentage change between the previous three months and the three months ending in the month indicated.

Mining production decreased by 2,5% year-on-year in August 2023. The largest negative contributors were:

- diamonds (-54,6% and contributing -2,7 percentage points);
- manganese ore (-7,9% and contributing -0,6 of a percentage point); and
- 'other' metallic minerals (-17,6% and contributing -0,5 of a percentage point) – see Tables 6 and 7.

Seasonally adjusted mining production increased by 0,8% in August 2023 compared with July 2023. This followed month-on-month changes of -1,7% in July 2023 and 0,8% in June 2023.

Table B – Seasonally adjusted index of the volume of mining production for the latest three months by mineral group and mineral (Base: 2019=100)

Mineral group and mineral	Weight	Mar – May 2023	Jun – Aug 2023	% change between Mar – May 2023 and Jun – Aug 2023	Contribution (% points) to the % change in total mining production
Gold	15,91	97,8	91,4	-6,5	-1,1
Iron ore	11,92	90,3	90,4	0,1	0,0
Chromium ore	3,62	106,7	109,5	2,6	0,1
Copper ¹	0,76	99,9	99,7	-0,2	0,0
Manganese ore	6,18	117,5	110,5	-6,0	-0,4
PGMs	22,96	92,2	92,9	0,8	0,2
Nickel ¹	1,15	70,4	68,2	-3,1	0,0
Other metallic minerals ¹	2,35	100,8	102,3	1,5	0,0
Diamonds ¹	3,20	78,6	79,7	1,4	0,0
Coal	27,85	89,1	86,6	-2,8	-0,7
Building materials	3,32	90,2	84,6	-6,2	-0,2
Other non-metallic minerals	0,78	86,4	88,0	1,9	0,0
Total	100,00	93,5	91,6	-2,0	-2,0

¹ Unadjusted. See notes 4, 5 and 6 on page 11.

Seasonally adjusted mining production decreased by 2,0% in the three months ended August 2023 compared with the previous three months. The largest negative contributors were:

- gold (-6,5% and contributing -1,1 percentage points);
- coal (-2,8% and contributing -0,7 of a percentage point); and
- manganese ore (-6,0% and contributing -0,4 of a percentage point) – see Table B.

Figure 1 – Volume of mining production (Base: 2019=100)

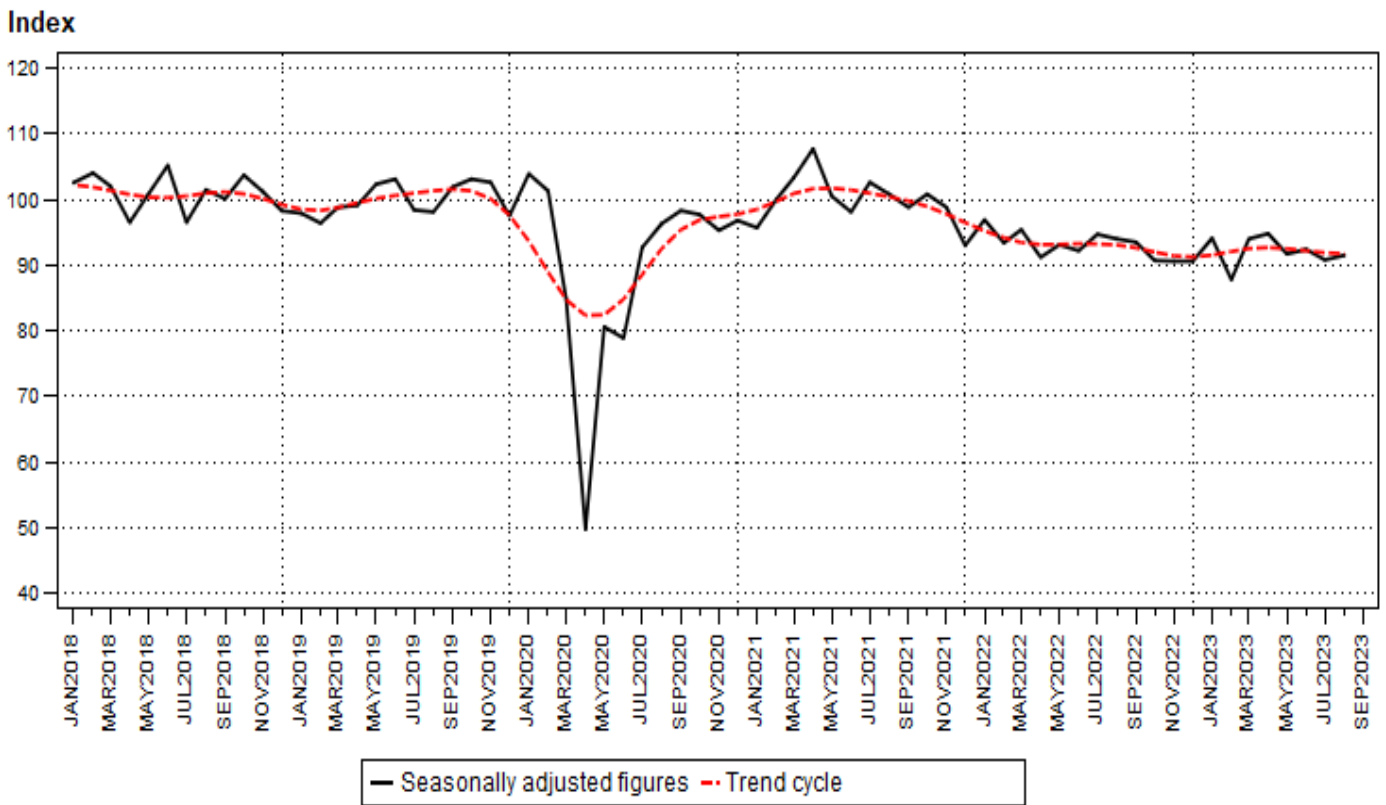
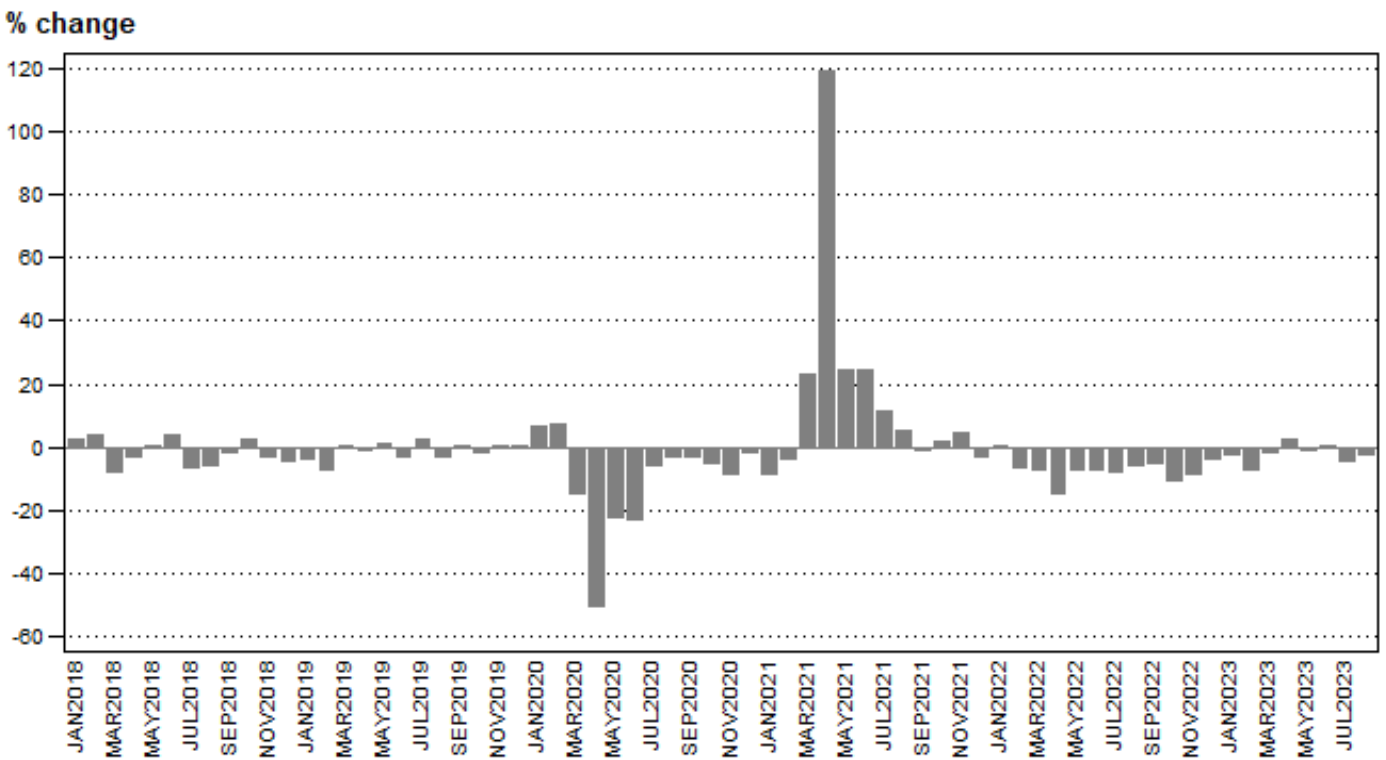


Figure 2 – Volume of mining production (Base: 2019=100): year-on-year percentage change



Sales: results for August 2023

Table C – Key growth rates in mineral sales at current prices

	Mar-23	Apr-23	May-23	Jun-23	Jul-23	Aug-23
Year-on-year % change, unadjusted	-14,5	-25,3	-11,6	-14,3	-24,6	-16,1
Month-on-month % change, seasonally adjusted	-2,6	-11,8	25,5	-13,6	-5,8	6,7
3-month % change, seasonally adjusted ¹	-0,1	-5,0	-4,2	-4,0	1,9	-5,7

¹ Percentage change between the previous three months and the three months ending in the month indicated.

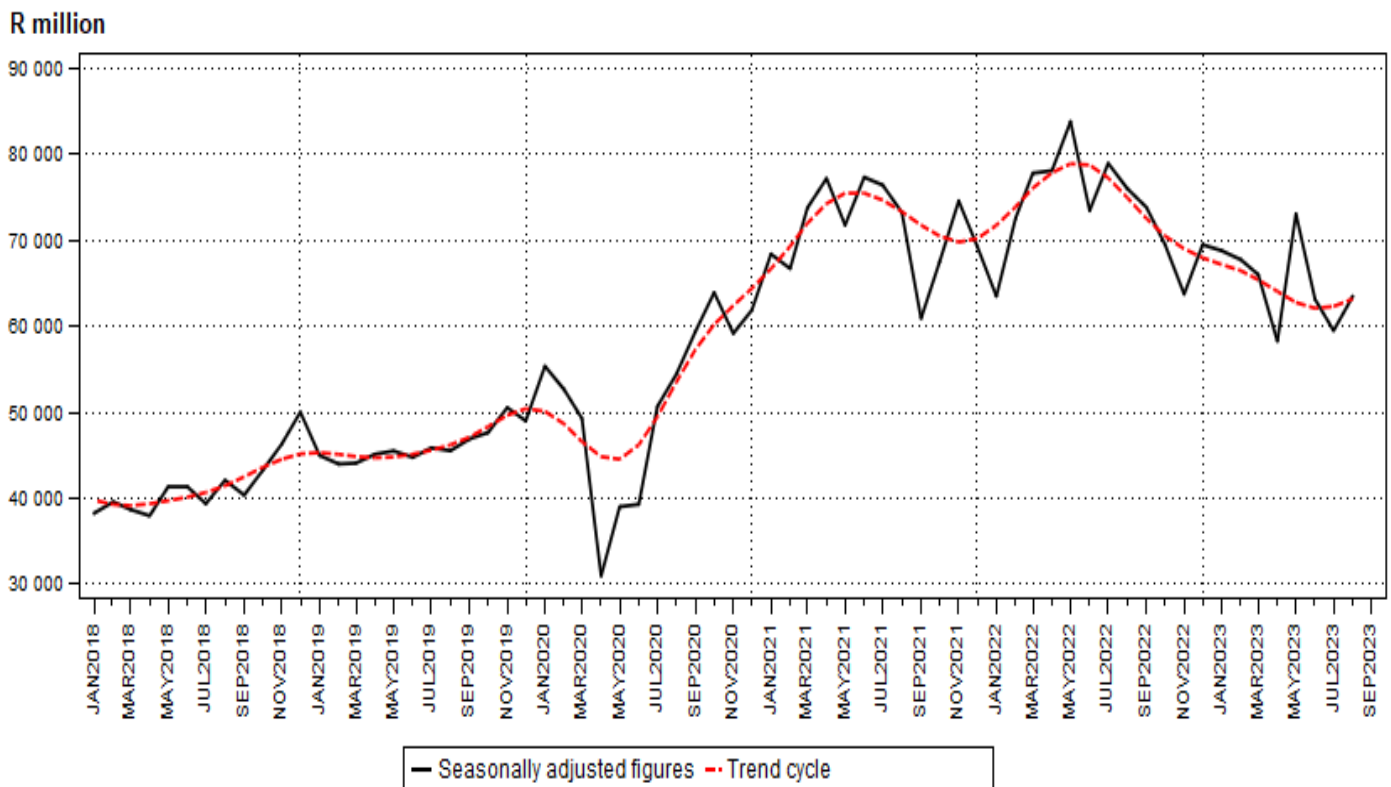
Mineral sales at current prices decreased by 16,1% year-on-year in August 2023. The largest negative contributors were:

- PGMs (-39,5% and contributing -11,0 percentage points); and
- coal (-33,4% and contributing -10,6 percentage points) – see Tables 12 and 13.

Seasonally adjusted mineral sales at current prices increased by 6,7% in August 2023 compared with July 2023. This followed month-on-month changes of -5,8% in July 2023 and -13,6% in June 2023.

Mineral sales at current prices decreased by 5,7% in the three months ended August 2023 compared with the previous three months.

Figure 3 – Total value of mineral sales at current prices



Risenga Maluleke
Statistician-General

Tables

Table 1 – Index of the volume of mining production (Base: 2019=100)

Month	2017	2018	2019	2020	2021 ¹	2022 ¹	2023 ¹
Jan	87,1	89,2	86,3	92,1	84,5	85,1	83,2
Feb	86,7	90,1	83,5	89,7	86,5	81,3	75,7
Mar	107,3	99,2	99,3	84,8	104,6	97,1	95,9
Apr	96,4	93,4	93,1	46,2	101,2	86,2	88,3
May	103,9	104,7	106,3	83,0	103,2	96,0	95,2
Jun	108,6	113,2	110,3	85,0	105,9	98,8	99,5
Jul	105,7	99,2	101,9	96,3	107,1	98,5	94,2
Aug	114,9	108,4	105,6	102,5	108,1	101,7	99,2
Sep	106,3	104,9	105,5	102,8	102,4	97,5	
Oct	106,4	109,2	107,5	102,2	103,9	92,8	
Nov	108,8	105,5	106,0	97,2	101,9	93,3	
Dec	98,3	94,1	94,5	93,0	90,5	87,3	
Year	102,5	100,9	100,0	89,6	100,0	93,0	

¹ Preliminary.

Table 2 – Year-on-year percentage change in the volume of mining production

Month	2018	2019	2020	2021	2022	2023	2023 year-to-date
Jan	2,4	-3,3	6,7	-8,3	0,7	-2,2	-2,2
Feb	3,9	-7,3	7,4	-3,6	-6,0	-6,9	-4,5
Mar	-7,5	0,1	-14,6	23,3	-7,2	-1,2	-3,3
Apr	-3,1	-0,3	-50,4	119,0	-14,8	2,4	-1,9
May	0,8	1,5	-21,9	24,3	-7,0	-0,8	-1,7
Jun	4,2	-2,6	-22,9	24,6	-6,7	0,7	-1,2
Jul	-6,1	2,7	-5,5	11,2	-8,0	-4,4	-1,7
Aug	-5,7	-2,6	-2,9	5,5	-5,9	-2,5	-1,8
Sep	-1,3	0,6	-2,6	-0,4	-4,8		
Oct	2,6	-1,6	-4,9	1,7	-10,7		
Nov	-3,0	0,5	-8,3	4,8	-8,4		
Dec	-4,3	0,4	-1,6	-2,7	-3,5		
Year	-1,6	-0,9	-10,4	11,6	-7,0		

Table 3 – Seasonally adjusted volume of total mining production

Month	Index (Base: 2019=100)				Month-on-month % change			
	2020	2021	2022	2023	2020	2021	2022	2023
Jan	103,9	95,7	96,9	94,1	6,6	-1,1	4,2	3,9
Feb	101,3	100,0	93,4	87,8	-2,5	4,5	-3,6	-6,7
Mar	84,8	103,3	95,4	94,0	-16,3	3,3	2,1	7,1
Apr	49,8	107,7	91,2	94,8	-41,3	4,3	-4,4	0,9
May	80,6	100,5	93,1	91,7	61,8	-6,7	2,1	-3,3
Jun	78,9	98,1	92,2	92,4	-2,1	-2,4	-1,0	0,8
Jul	92,7	102,6	94,7	90,8	17,5	4,6	2,7	-1,7
Aug	96,3	100,8	94,0	91,5	3,9	-1,8	-0,7	0,8
Sep	98,3	98,8	93,5		2,1	-2,0	-0,5	
Oct	97,7	100,8	90,7		-0,6	2,0	-3,0	
Nov	95,3	98,8	90,6		-2,5	-2,0	-0,1	
Dec	96,8	93,0	90,6		1,6	-5,9	0,0	

Table 4 – Index of the volume of mining production by mineral group and mineral (Base: 2019=100) ¹

Mineral group and mineral	Weight	Mar-23	Apr-23	May-23	Jun-23	Jul-23	Aug-23
Gold	15,91	95,1	86,1	95,2	97,3	94,5	97,0
Iron ore	11,92	92,9	87,8	88,3	90,4	105,7	107,1
Chromium ore	3,62	109,7	103,7	110,7	116,2	114,0	121,4
Copper	0,76	102,7	102,1	94,8	81,8	103,1	114,3
Manganese ore	6,18	123,3	112,0	119,1	126,4	110,6	118,4
PGMs	22,96	94,0	85,7	103,1	109,9	83,1	100,1
Nickel	1,15	62,6	73,5	75,1	73,9	60,1	70,6
Other metallic minerals	2,35	97,1	101,8	103,5	106,0	105,2	95,8
Diamonds	3,20	82,2	76,1	77,6	80,4	86,9	71,7
Coal	27,85	93,7	86,1	86,9	92,5	93,8	93,6
Building materials	3,32	101,2	82,5	92,4	91,3	89,7	94,8
Other non-metallic minerals	0,78	83,1	76,4	87,5	84,7	93,7	108,3
Total	100,00	95,9	88,3	95,2	99,5	94,2	99,2

¹ All index values in this table are preliminary. Annual averages and annual percentage changes are available on the following link: [Annual data](#)

Table 5 – Seasonally adjusted index of the volume of mining production by mineral group and mineral (Base: 2019=100)

Mineral group and mineral	Mar-23	Apr-23	May-23	Jun-23	Jul-23	Aug-23	Month-on-month % change
Gold	98,5	97,6	97,2	94,4	91,6	88,3	-3,6
Iron ore	91,5	91,9	87,5	78,9	96,7	95,5	-1,2
Chromium ore	108,4	105,6	106,1	107,8	109,0	111,7	2,5
Copper ¹	102,7	102,1	94,8	81,8	103,1	114,3	10,9
Manganese ore	129,9	112,7	110,0	111,4	110,2	110,0	-0,2
PGMs	90,1	91,2	95,2	100,5	85,4	92,8	8,7
Nickel ¹	62,6	73,5	75,1	73,9	60,1	70,6	17,5
Other metallic minerals ¹	97,1	101,8	103,5	106,0	105,2	95,8	-8,9
Diamonds ¹	82,2	76,1	77,6	80,4	86,9	71,7	-17,5
Coal	88,6	94,7	83,9	86,6	86,4	86,8	0,5
Building materials	92,6	93,7	84,2	84,4	84,4	84,9	0,6
Other non-metallic minerals	86,3	85,4	87,4	85,7	87,0	91,2	4,8
Total	94,0	94,8	91,7	92,4	90,8	91,5	0,8

¹ Unadjusted. See notes 4, 5 and 6 on page 11.

Table 6 – Year-on-year percentage change in the volume of mining production by mineral group and mineral

Mineral group and mineral	Mar-23	Apr-23	May-23	Jun-23	Jul-23	Aug-23
Gold	21,3	24,1	25,4	23,9	8,5	0,6
Iron ore	-0,6	-3,6	-6,1	-18,0	13,8	5,3
Chromium ore	-3,9	-4,0	-3,4	1,6	-2,2	2,2
Copper	17,1	16,8	19,7	-32,0	12,8	37,9
Manganese ore	32,4	-2,6	9,4	3,1	-11,5	-7,9
PGMs	-9,0	-4,6	-7,1	11,3	-10,4	2,7
Nickel	-4,0	11,9	-8,2	-0,1	-16,3	2,0
Other metallic minerals	-0,6	-3,0	-0,2	6,4	2,1	-17,6
Diamonds	-54,7	-41,1	-31,3	-41,0	-33,4	-54,6
Coal	-1,2	11,8	-2,6	-1,7	-6,9	-0,3
Building materials	2,1	6,3	-5,5	-8,8	-10,1	-9,0
Other non-metallic minerals	-4,0	-8,1	-3,3	-20,5	-7,9	3,4
Total	-1,2	2,4	-0,8	0,7	-4,4	-2,5

Table 7 – Contribution of each mineral group and mineral to the year-on-year percentage change in the volume of mining production (percentage points)

Mineral group and mineral	Mar-23	Apr-23	May-23	Jun-23	Jul-23	Aug-23
Gold	2,7	3,1	3,2	3,0	1,2	0,1
Iron ore	-0,1	-0,5	-0,7	-2,4	1,5	0,6
Chromium ore	-0,2	-0,2	-0,1	0,1	-0,1	0,1
Copper	0,1	0,1	0,1	-0,3	0,1	0,2
Manganese ore	1,9	-0,2	0,7	0,2	-0,9	-0,6
PGMs	-2,2	-1,1	-1,9	2,6	-2,2	0,6
Nickel	0,0	0,1	-0,1	0,0	-0,1	0,0
Other metallic minerals	0,0	-0,1	0,0	0,2	0,1	-0,5
Diamonds	-3,3	-2,0	-1,2	-1,8	-1,4	-2,7
Coal	-0,3	2,9	-0,7	-0,5	-2,0	-0,1
Building materials	0,1	0,2	-0,2	-0,3	-0,3	-0,3
Other non-metallic minerals	0,0	-0,1	0,0	-0,2	-0,1	0,0
Total	-1,2	2,4	-0,8	0,7	-4,4	-2,5

Table 8 – Mineral sales at current prices (R million)

Month	2017	2018	2019	2020	2021 ¹	2022 ¹	2023 ¹
Jan	37 903,7	34 420,4	41 070,7	51 128,5	63 479,1	58 966,9	63 507,9
Feb	33 691,7	34 892,7	38 202,9	45 135,2	56 883,8	61 612,5	57 523,7
Mar	39 473,2	39 778,5	45 585,3	51 606,4	78 183,9	83 544,8	71 467,9
Apr	34 917,1	37 039,5	44 538,7	31 064,5	78 566,0	80 253,8	59 943,5
May	36 288,4	41 684,6	46 519,8	40 521,7	75 958,2	89 795,4	79 366,9
Jun	40 672,0	45 024,3	48 295,2	41 962,5	82 014,6	77 637,8	66 556,7
Jul	37 150,3	37 118,1	43 596,0	48 588,4	73 631,0	76 276,8	57 480,0
Aug	40 890,3	43 022,2	47 069,2	56 868,0	77 069,1	80 474,5	67 483,8
Sep	44 264,9	43 017,4	50 009,3	63 394,0	65 000,2	78 782,0	
Oct	43 966,4	45 802,3	50 051,2	66 165,3	69 017,3	70 283,8	
Nov	42 104,9	46 680,3	50 450,7	58 255,9	72 058,8	60 820,6	
Dec	42 562,3	50 020,5	47 491,9	58 501,2	64 558,5	64 453,9	
Total	473 885,2	498 500,8	552 880,9	613 191,6	856 420,5	882 902,8	

¹ Preliminary.

Table 9 – Year-on-year percentage change in mineral sales at current prices

Month	2018	2019	2020	2021	2022	2023	2023 year-to-date
Jan	-9,2	19,3	24,5	24,2	-7,1	7,7	7,7
Feb	3,6	9,5	18,1	26,0	8,3	-6,6	0,4
Mar	0,8	14,6	13,2	51,5	6,9	-14,5	-5,7
Apr	6,1	20,2	-30,3	152,9	2,1	-25,3	-11,2
May	14,9	11,6	-12,9	87,5	18,2	-11,6	-11,3
Jun	10,7	7,3	-13,1	95,4	-5,3	-14,3	-11,8
Jul	-0,1	17,5	11,5	51,5	3,6	-24,6	-13,7
Aug	5,2	9,4	20,8	35,5	4,4	-16,1	-14,0
Sep	-2,8	16,3	26,8	2,5	21,2		
Oct	4,2	9,3	32,2	4,3	1,8		
Nov	10,9	8,1	15,5	23,7	-15,6		
Dec	17,5	-5,1	23,2	10,4	-0,2		
Total	5,2	10,9	10,9	39,7	3,1		

Table 10 – Seasonally adjusted total mineral sales at current prices

Month	R million				Month-on-month % change			
	2020	2021	2022	2023	2020	2021	2022	2023
Jan	55 365,7	68 412,1	63 506,3	68 796,3	13,0	10,5	-8,4	-1,0
Feb	52 656,1	66 724,7	72 573,2	67 750,5	-4,9	-2,5	14,3	-1,5
Mar	49 274,3	73 784,6	77 819,4	66 018,9	-6,4	10,6	7,2	-2,6
Apr	30 952,0	77 210,8	78 118,4	58 259,4	-37,2	4,6	0,4	-11,8
May	39 008,7	71 784,9	83 824,6	73 099,6	26,0	-7,0	7,3	25,5
Jun	39 293,3	77 349,4	73 468,6	63 143,9	0,7	7,8	-12,4	-13,6
Jul	50 665,9	76 433,2	78 976,2	59 505,9	28,9	-1,2	7,5	-5,8
Aug	54 460,4	73 248,5	76 029,0	63 485,0	7,5	-4,2	-3,7	6,7
Sep	59 452,8	60 915,3	73 848,4		9,2	-16,8	-2,9	
Oct	63 929,0	67 499,4	69 527,1		7,5	10,8	-5,9	
Nov	59 177,6	74 597,6	63 751,7		-7,4	10,5	-8,3	
Dec	61 883,7	69 304,8	69 506,6		4,6	-7,1	9,0	

Table 11 – Mineral sales at current prices by mineral group and mineral (R million) ¹

Mineral group and mineral	Mar-23	Apr-23	May-23	Jun-23	Jul-23	Aug-23
Gold	6 834,6	3 372,4	15 778,6	10 031,8	9 420,8	11 653,0
Iron ore	9 815,0	8 476,3	8 155,2	7 672,5	8 091,6	8 306,8
Chromium ore	4 837,9	4 733,9	4 446,2	5 050,3	4 852,4	5 021,9
Copper	486,6	481,4	629,0	496,0	508,8	614,0
Manganese ore	4 875,9	3 458,9	4 887,9	4 415,7	3 341,4	3 724,6
PGMs	19 217,1	17 084,8	22 174,7	16 230,3	11 726,9	13 567,5
Nickel	789,2	913,5	1 004,7	971,7	862,2	834,7
Other metallic minerals	2 535,0	2 032,5	2 272,1	2 077,5	1 877,3	1 756,0
Coal	16 917,9	16 788,3	15 562,0	16 243,3	13 689,9	16 987,3
Building materials	1 183,4	1 043,7	1 151,7	1 128,7	1 096,0	1 175,9
Other non-metallic minerals	3 975,1	1 557,8	3 304,8	2 239,0	2 012,7	3 842,0
Total	71 467,9	59 943,5	79 366,9	66 556,7	57 480,0	67 483,8

¹ All values in this table are preliminary.

Table 12 – Year-on-year percentage change in mineral sales at current prices by mineral group and mineral

Mineral group and mineral	Mar-23	Apr-23	May-23	Jun-23	Jul-23	Aug-23
Gold	-20,9	-45,7	71,8	84,8	15,3	20,1
Iron ore	12,8	-9,1	-30,3	-16,6	1,8	28,3
Chromium ore	65,5	62,1	27,8	57,1	49,4	79,4
Copper	67,5	117,0	3,0	23,3	225,9	8,8
Manganese ore	44,4	-9,8	-0,3	-2,8	-25,1	-18,9
PGMs	-36,2	-41,7	-20,1	-30,9	-48,2	-39,5
Nickel	-46,5	-2,0	-32,1	-30,3	6,3	-18,2
Other metallic minerals	7,3	33,5	-1,6	-14,5	-34,2	-23,3
Coal	-23,0	-22,5	-37,2	-26,2	-38,4	-33,4
Building materials	9,3	16,5	8,2	-2,8	-1,3	-0,2
Other non-metallic minerals	52,6	-54,8	28,9	-48,6	-24,4	-2,0
Total	-14,5	-25,3	-11,6	-14,3	-24,6	-16,1

Table 13 – Contribution of each mineral group and mineral to the year-on-year percentage change in mineral sales at current prices (percentage points)

Mineral group and mineral	Mar-23	Apr-23	May-23	Jun-23	Jul-23	Aug-23
Gold	-2,2	-3,5	7,3	5,9	1,6	2,4
Iron ore	1,3	-1,1	-3,9	-2,0	0,2	2,3
Chromium ore	2,3	2,3	1,1	2,4	2,1	2,8
Copper	0,2	0,3	0,0	0,1	0,5	0,1
Manganese ore	1,8	-0,5	0,0	-0,2	-1,5	-1,1
PGMs	-13,1	-15,2	-6,2	-9,4	-14,3	-11,0
Nickel	-0,8	0,0	-0,5	-0,5	0,1	-0,2
Other metallic minerals	0,2	0,6	0,0	-0,5	-1,3	-0,7
Coal	-6,0	-6,1	-10,3	-7,4	-11,2	-10,6
Building materials	0,1	0,2	0,1	0,0	0,0	0,0
Other non-metallic minerals	1,6	-2,4	0,8	-2,7	-0,9	-0,1
Total	-14,5	-25,3	-11,6	-14,3	-24,6	-16,1

Survey information

- Introduction**
- 1 Statistics South Africa (Stats SA) publishes monthly mining production indices and mineral sales based on the information furnished by the Department of Mineral Resources and Energy (DMRE). Data in this release are presented by mineral group and mineral.
 - 2 In accordance with international practice, the indices are usually re-based every five years to a new base year. The current base year of the index of the volume of mining production is 2019=100. Both actual and seasonally adjusted figures are presented.
 - 3 The value of mineral sales is calculated, in general, on a free-on-rail/free-on-board basis.
 - 4 In order to improve timeliness, some information for the current month had to be estimated due to late response. These estimates will be revised in future statistical release(s) as soon as more up-to-date information is available.
- Purpose of the survey**
- 5 The monthly mining production and sales survey is conducted by the DMRE, covering all mining establishments operating in the South African economy. The results of this survey are used to calculate the volume of mining production indices in order to estimate the gross domestic product (GDP) and its components, which in turn are used to develop and monitor government policy.
- Scope of the survey**
- 6 This survey covers mining establishments conducting activities regarding the extracting, dressing and beneficiating of minerals occurring naturally, for example solids such as coal and ores.
- Classification**
- 7 The 1993 edition of the *Standard Industrial Classification of All Economic Activities* (SIC), Fifth Edition, Report No. 09-90-02, was used to classify the statistical units in the survey. The SIC is based on the 1990 *International Standard Industrial Classification of All Economic Activities* (ISIC) with suitable adaptations for local conditions. Each statistical unit is classified to an industry which reflects the predominant activity of the establishment. Statistics in this publication are presented by mineral group and mineral.
- Statistical unit**
- 8 The statistical unit for the collection of information is the mining establishment. An establishment is the smallest economic unit that functions as a separate entity.
- Rounding-off of figures**
- 9 The figures in the tables have, where necessary, been rounded off to the nearest digit shown. There may, therefore, be slight discrepancies between the sums of the constituent items and the totals shown.
- Historical data and past publications**
- 10 Historical mining data and past publications are available on the Stats SA website. Click on the following link ([Time series data](#)) or ([Past publications](#)) to access the data and releases electronically. Annual averages and annual percentage changes are available on the following link: [Annual data](#)

Technical notes

Index of the volume of mining production	1	The index of the volume of mining production, also known as the production index, is a statistical measure of the change in the volume of production. The production index of a mineral group is the ratio between the volume of production of a mineral group in a given period and the volume of production of the same mineral group in the base period. The current base period is 2019. The production in the base period is set at 100.
Index weighting	2	The weight of a mineral group is the ratio of its value added to the total value added of the mining industry. The weight of a mineral group reflects the importance of the mineral group in the total mining industry. The weights change over time due to quality improvements and changes in relative prices. New weights will be calculated annually.
	3	The weights, which are used to aggregate minerals to mineral groups and mineral groups to total mining, are derived from national accounts value added data. The latest weights (implemented in the May 2022 publication) are based on an average of value added data for the years 2017, 2018 and 2019. These weights are applicable from January 2019.
Seasonal adjustment	4	Seasonally adjusted estimates are generated each month using the X-12-ARIMA Seasonal Adjustment Program developed by the United States Census Bureau. Seasonal adjustment is a means of removing the estimated effects of normal seasonal variation from the series so that the effects of other influences on the series can be recognised more clearly. Seasonal adjustment does not aim to remove irregular or non-seasonal influences which may be present in any particular month.
	5	Influences that are volatile or unsystematic can still make it difficult to interpret the movement of the series even after adjustment for seasonal variations. This means the month-to-month movements of seasonally adjusted estimates may not be reliable indicators of trend behaviour. The X-12-ARIMA procedure for mining production and sales is described in more detail on the Stats SA website at: Click to download seasonal adjustment for mining production and sales February 2022
Calendar effects	6	These are effects due to calendar variations. Such calendar effects include the number of working/trading days in a week, moving holidays such as Easter and the length of month (some months have more days than others).
Trend cycle	7	The trend is the long-term pattern or movement of a time series. The X-12-ARIMA Seasonal Adjustment Program is used for smoothing seasonally adjusted estimates to estimate the underlying trend cycle.
Reliability of estimates	8	Figures for the latest three calendar years are preliminary.
Month-on-month percentage change	9	The month-on-month percentage change in a variable for any given month is the change between that month and the previous month, expressed as a percentage of the latter.
Year-on-year percentage change	10	The year-on-year percentage change in a variable for any given period is the change between that period and the corresponding period of the previous year, expressed as a percentage of the latter.
Index contribution (percentage points)	11	The contribution (percentage points) of a mineral group or mineral to the percentage change in the total mining production for a given period is calculated by multiplying the difference in the index for each mineral group or mineral by the weight of the mineral group or mineral and then dividing by the previous period's total index.

Sales contribution (percentage points)	12	The contribution (percentage points) to the percentage change in total sales for a given period is calculated by multiplying the percentage change of each mineral group or mineral with its percentage contribution to total mineral sales of the previous period, divided by 100.
---	-----------	---

Glossary

Free-on-rail	Free-on-rail relates to goods sold on the local market where no rail or road transport costs are involved.																
Free-on-board	Free-on-board relates to goods destined for the export market. Rail, road transport and docking charges are involved but no charges are made for transport by sea.																
Industry	An industry consists of a group of establishments engaged in the same or similar kinds of economic activity. Industries are defined in the <i>System of National Accounts (SNA)</i> in the same way as in the <i>Standard Industrial Classification of All Economic Activities (SIC)</i> , Fifth Edition of January 1993.																
PGMs – Platinum group metals	Platinum group metals include platinum, iridium, osmiridium, palladium, rhodium, ruthenium and osmium.																
Sales	Sales are the total value of sales of primary minerals at the first point of saleability by the mining establishment.																
Symbols and abbreviations	<table> <tr> <td>DMRE</td> <td>Department of Mineral Resources and Energy</td> </tr> <tr> <td>GDP</td> <td>Gross domestic product</td> </tr> <tr> <td>ISIC</td> <td>International Standard Industrial Classification</td> </tr> <tr> <td>PGMs</td> <td>Platinum group metals</td> </tr> <tr> <td>SIC</td> <td>Standard Industrial Classification of All Economic Activities</td> </tr> <tr> <td>SNA</td> <td>System of National Accounts</td> </tr> <tr> <td>Stats SA</td> <td>Statistics South Africa</td> </tr> <tr> <td>*</td> <td>Revised</td> </tr> </table>	DMRE	Department of Mineral Resources and Energy	GDP	Gross domestic product	ISIC	International Standard Industrial Classification	PGMs	Platinum group metals	SIC	Standard Industrial Classification of All Economic Activities	SNA	System of National Accounts	Stats SA	Statistics South Africa	*	Revised
DMRE	Department of Mineral Resources and Energy																
GDP	Gross domestic product																
ISIC	International Standard Industrial Classification																
PGMs	Platinum group metals																
SIC	Standard Industrial Classification of All Economic Activities																
SNA	System of National Accounts																
Stats SA	Statistics South Africa																
*	Revised																

Technical enquiries

JP Terblanche	Telephone number: (012) 310 2965 Email: juan-pierret@statssa.gov.za
Mpuleng Galane	Telephone number: (012) 444 3735 Email: mpuleng.galane@dmre.gov.za

General information

Stats SA publishes approximately 300 different statistical releases each year. It is not economically viable to produce them in more than one of South Africa's 12 official languages. Since the releases are used extensively, not only locally but also by international economic and social-scientific communities, Stats SA releases are published in English only.

Stats SA has copyright on this publication. Users may apply the information as they wish, provided that they acknowledge Stats SA as the source of the basic data wherever they process, apply, utilise, publish or distribute the data and also that they specify that the relevant application and analysis (where applicable) result from their own processing of the data.

Advance release calendar

An advance release calendar is disseminated on www.statssa.gov.za.

Stats SA products

A complete set of Stats SA publications is available at the Stats SA Library and the following libraries:

National Library of South Africa, Pretoria Division
National Library of South Africa, Cape Town Division
Natal Society Library, Pietermaritzburg
Library of Parliament, Cape Town
Bloemfontein Public Library
Johannesburg Public Library
Eastern Cape Library Services, Qonce
Central Regional Library, Polokwane
Central Reference Library, Mbombela
Central Reference Collection, Kimberley
Central Reference Library, Mmabatho

Stats SA also provides a subscription service.

Electronic services

A large range of data is available via online services. For more details about our electronic services, contact Stats SA's user information service.

You can visit us on the internet at: www.statssa.gov.za.

General enquiries

User information services	Telephone number: (012) 310 8600 Email: info@statssa.gov.za
Orders/subscription services	Telephone number: (012) 310 8619 Email: millies@statssa.gov.za
Postal address	Private Bag X44, Pretoria, 0001

Produced by Stats SA