



your leading partner in quality statistics

Statistical release

P2041

Mining: Production and sales (Preliminary)

April 2013

Embargoed until:
11 June 2013
11:30

Enquiries:
User Information Services
Tel: (012) 310 8600

Forthcoming issue:
May 2013

Expected release date:
11 July 2013

Contents

Production: results for April 2013..... 3

Table A – Key growth rates in the volume of mining production..... 3

Table B – Seasonally adjusted index of the volume of mining production for the latest three months by mineral group and mineral (Base: 2010=100)..... 3

Figure 1 – Volume of mining production (Base: 2010=100) 4

Figure 2 – Volume of mining production (Base: 2010=100): year-on-year percentage change..... 4

Sales: results for March 2013..... 5

Table C – Key growth rates in mineral sales at current prices..... 5

Table D – Seasonally adjusted mineral sales at current prices for the latest three months by mineral group and mineral 5

Tables 6

Table 1 – Index of the volume of mining production (Base: 2010=100)..... 6

Table 2 – Year-on-year percentage change in the volume of mining production..... 6

Table 3 – Seasonally adjusted volume of total mining production 6

Table 4 – Index of the volume of mining production by mineral group and mineral (Base: 2010=100)..... 7

Table 5 – Seasonally adjusted index of the volume of mining production by mineral group and mineral (Base: 2010=100) 7

Table 6 – Year-on-year percentage change in the volume of mining production by mineral group and mineral..... 8

Table 7 – Contribution of each mineral group and mineral to the year-on-year percentage change in the volume of mining production (percentage points) 8

Table 8 – Mineral sales at current prices (R million) 9

Table 9 – Year-on-year percentage change in mineral sales at current prices..... 9

Table 10 – Seasonally adjusted mineral sales at current prices 9

Table 11 – Mineral sales at current prices by mineral group and mineral (R million) 10

Table 12 – Seasonally adjusted mineral sales at current prices by mineral group and mineral (R million) 10

Table 13 – Year-on-year percentage change in mineral sales at current prices by mineral group and mineral..... 11

Table 14 – Contribution of each mineral group and mineral to the year-on-year percentage change in mineral sales at current prices (percentage points) 11

Survey information..... 12

Technical notes 13

Glossary 14

Technical enquiries 14

General information 15

Production: results for April 2013

Table A – Key growth rates in the volume of mining production

| | Nov-12 | Dec-12 | Jan-13 | Feb-13 | Mar-13 | Apr-13 |
|--|--------|--------|--------|--------|--------|--------|
| Year-on-year % change, unadjusted | -3,5 | -8,4 | 6,2 | 6,9 | -3,8 | -0,4 |
| Month-on-month % change, seasonally adjusted | 12,6 | 0,3 | 4,6 | -2,4 | -4,9 | 3,4 |
| 3-month % change, seasonally adjusted 1/ | -9,9 | -5,9 | 5,3 | 7,5 | 5,4 | -1,5 |

1/ Percentage change between the previous three months and the three months ending in the month indicated.

Mining production decreased by 0,4% year-on-year in April 2013. The largest negative growth rate was recorded for ‘other’ metallic minerals (-39,2%), followed by PGMs (-13,4%). The main contributors to the 0,4% decrease were PGMs (contributing -2,8 percentage points) and ‘other’ metallic minerals (contributing -1,2 percentage points). Coal (contributing 1,9 percentage points) and manganese ore (contributing 1,0 percentage point) were significant positive contributors – see Tables 6 and 7.

Seasonally adjusted mining production increased by 3,4% in April 2013 compared with March 2013. This followed month-on-month changes of -4,9% in March 2013 and -2,4% in February 2013.

Table B – Seasonally adjusted index of the volume of mining production for the latest three months by mineral group and mineral (Base: 2010=100)

| Mineral group and mineral | Weight (2010) | Nov 2012 – Jan 2013 | Feb – Apr 2013 | % change between Nov 2012 – Jan 2013 and Feb – Apr 2013 | Contribution (% points) to the % change in total mining production |
|-----------------------------|---------------|---------------------|----------------|---|--|
| Gold | 17,7 | 73,8 | 83,0 | 12,5 | 1,7 |
| Iron ore | 14,4 | 116,8 | 118,1 | 1,1 | 0,2 |
| Chromium ore | 2,2 | 110,4 | 112,4 | 1,8 | 0,0 |
| Copper | 1,4 | 89,4 | 96,2 | 7,6 | 0,1 |
| Manganese ore | 3,6 | 132,3 | 142,1 | 7,4 | 0,4 |
| PGMs | 24,6 | 89,3 | 86,1 | -3,6 | -0,8 |
| Nickel | 2,0 | 115,9 | 112,5 | -2,9 | -0,1 |
| Other metallic minerals | 2,5 | 83,7 | 61,3 | -26,8 | -0,6 |
| Diamonds | 3,1 | 113,8 | 82,4 | -27,6 | -1,0 |
| Coal | 23,7 | 103,1 | 98,3 | -4,7 | -1,2 |
| Building materials | 1,6 | 109,8 | 106,3 | -3,2 | -0,1 |
| Other non-metallic minerals | 3,2 | 82,4 | 75,1 | -8,9 | -0,2 |
| Total | 100,0 | 97,1 | 95,6 | -1,5 | -1,5 |

Seasonally adjusted mining production decreased by 1,5% in the three months ended April 2013 compared with the previous three months. The main contributors to the 1,5% decrease were coal (contributing -1,2 percentage points), diamonds (contributing -1,0 percentage point) and PGMs (contributing -0,8 of a percentage point) – see Table B.

Figure 1 – Volume of mining production (Base: 2010=100)

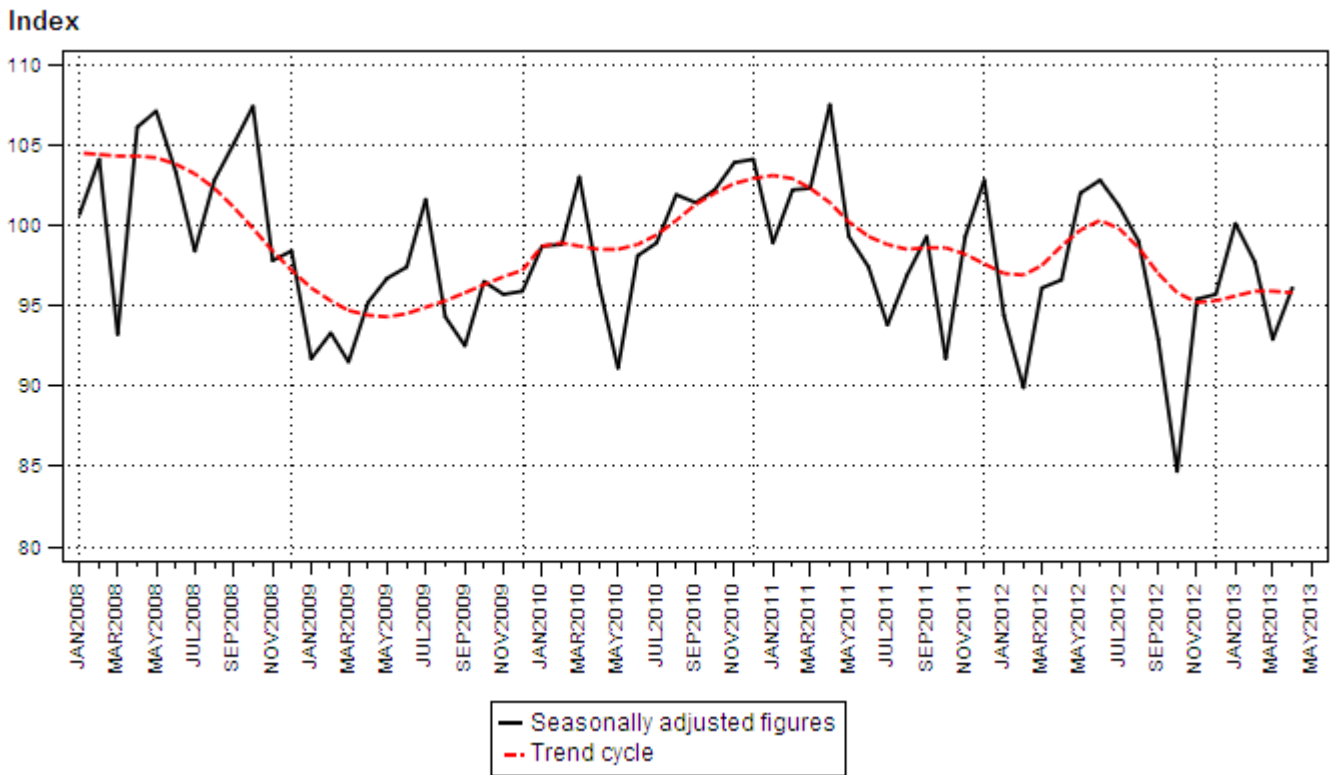
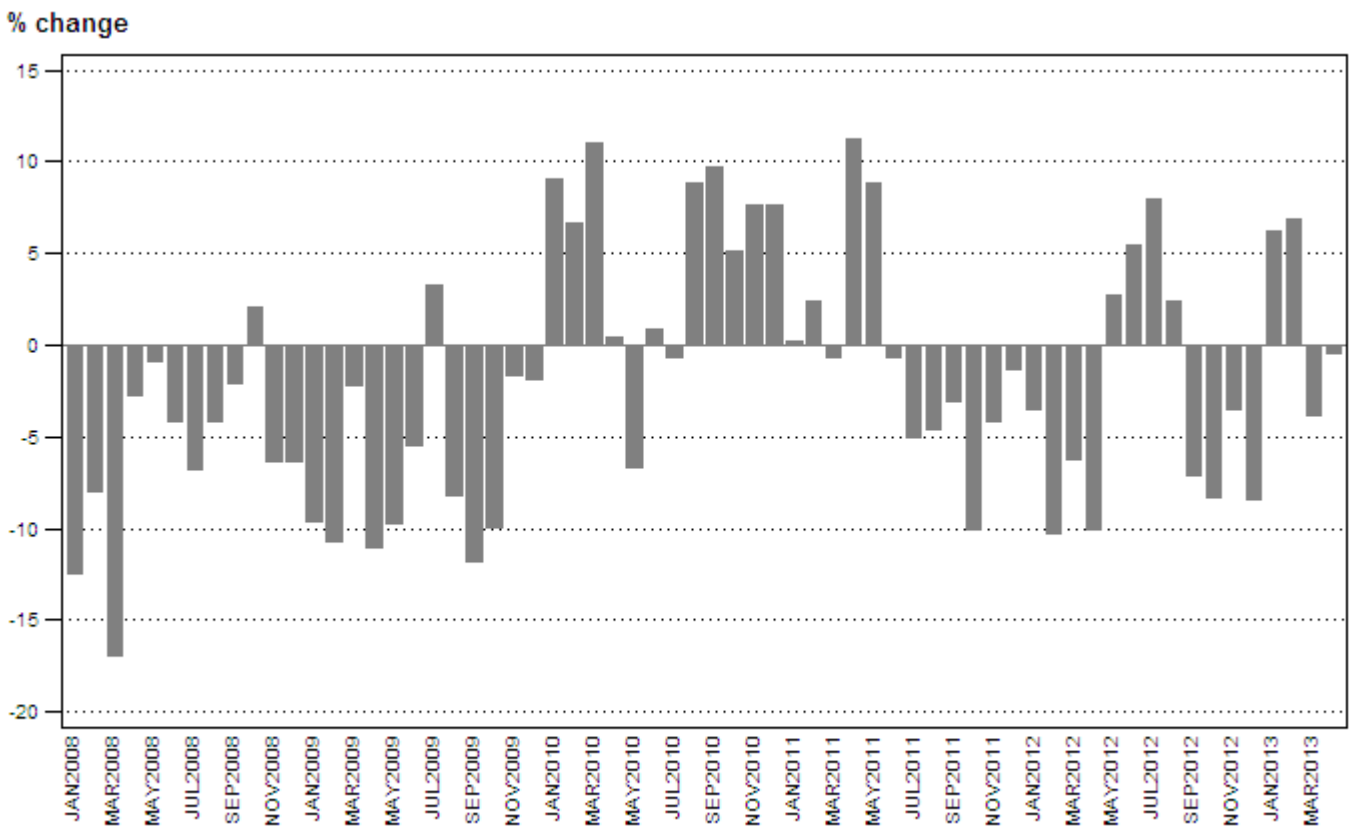


Figure 2 – Volume of mining production (Base: 2010=100): year-on-year percentage change



Sales: results for March 2013

Table C – Key growth rates in mineral sales at current prices

| | Oct-12 | Nov-12 | Dec-12 | Jan-13 | Feb-13 | Mar-13 |
|--|--------|--------|--------|--------|--------|--------|
| Year-on-year % change, unadjusted | -15,6 | -15,4 | -4,8 | -0,6 | 3,3 | 10,5 |
| Month-on-month % change, seasonally adjusted | -3,6 | 4,4 | 9,1 | 2,7 | -0,9 | 1,8 |
| 3-month % change, seasonally adjusted 1/ | -6,2 | -8,7 | -3,1 | 5,8 | 12,5 | 10,3 |

1/ Percentage change between the previous three months and the three months ending in the month indicated.

Mineral sales increased by 10,5% year-on-year in March 2013. The highest positive growth rates were recorded for chromium ore (37,9%) and PGMs (35,0%). The major contributors to the 10,5% increase were PGMs (contributing 6,3 percentage points) and iron ore (contributing 2,1 percentage points) – see Tables 13 and 14.

Seasonally adjusted mineral sales at current prices increased by 1,8% in March 2013 compared with February 2013. This followed month-on-month changes of -0,9% in February 2013 and 2,7% in January 2013.

Table D – Seasonally adjusted mineral sales at current prices for the latest three months by mineral group and mineral

| Mineral group and mineral | % contribution to total mineral sales during Oct – Dec 2012 | Oct – Dec 2012 R million | Jan – Mar 2013 R million | % change between Oct – Dec 2012 and Jan – Mar 2013 | Contribution to the % change in the total value of mineral sales |
|-----------------------------|---|--------------------------|--------------------------|--|--|
| Gold | 18,2 | 16 077,0 | 20 462,0 | 27,3 | 5,0 |
| Iron ore | 13,4 | 11 889,6 | 15 244,3 | 28,2 | 3,8 |
| Chromium ore | 2,5 | 2 178,5 | 2 259,6 | 3,7 | 0,1 |
| Copper | 1,4 | 1 271,8 | 1 367,0 | 7,5 | 0,1 |
| Manganese ore | 3,2 | 2 859,6 | 3 090,2 | 8,1 | 0,3 |
| PGMs | 21,9 | 19 386,2 | 20 506,3 | 5,8 | 1,3 |
| Nickel | 1,9 | 1 662,3 | 1 390,9 | -16,3 | -0,3 |
| Other metallic minerals | 2,6 | 2 276,2 | 2 515,2 | 10,5 | 0,3 |
| Coal | 26,7 | 23 660,6 | 23 800,9 | 0,6 | 0,2 |
| Building materials | 2,3 | 2 037,0 | 2 105,2 | 3,3 | 0,1 |
| Other non-metallic minerals | 5,9 | 5 257,9 | 4 894,0 | -6,9 | -0,4 |
| Total | 100,0 | 88 556,7 | 97 635,6 | 10,3 | 10,3 |

Seasonally adjusted mineral sales at current prices increased by 10,3% in the first quarter of 2013 compared with the previous quarter. This increase was mainly driven by the sales value of gold (contributing 5,0 percentage points), iron ore (contributing 3,8 percentage points) and PGMs (contributing 1,3 percentage points) – see Table D.

PJ Lehohla
Statistician-General

Tables

Table 1 – Index of the volume of mining production (Base: 2010=100)

| Month | 2007 | 2008 | 2009 | 2010 | 2011 | 2012 1/ | 2013 1/ |
|-------------|--------------|--------------|-------------|--------------|-------------|-------------|---------|
| Jan | 99,8 | 87,4 | 79,0 | 86,2 | 86,4 | 83,4 | 88,6 |
| Feb | 100,5 | 92,5 | 82,6 | 88,1 | 90,2 | 81,0 | 86,6 |
| Mar | 113,9 | 94,7 | 92,6 | 102,8 | 102,2 | 95,9 | 92,3 |
| Apr | 103,9 | 101,1 | 90,0 | 90,4 | 100,5 | 90,4 | 90,0 |
| May | 109,6 | 108,6 | 98,1 | 91,5 | 99,6 | 102,3 | |
| Jun | 113,5 | 108,9 | 102,9 | 103,8 | 103,2 | 108,9 | |
| Jul | 106,2 | 99,0 | 102,3 | 101,7 | 96,6 | 104,3 | |
| Aug | 112,5 | 107,9 | 99,1 | 107,8 | 102,8 | 105,3 | |
| Sep | 115,6 | 113,2 | 99,8 | 109,5 | 106,1 | 98,6 | |
| Oct | 107,3 | 109,6 | 98,7 | 103,7 | 93,3 | 85,6 | |
| Nov | 109,2 | 102,3 | 100,7 | 108,5 | 104,0 | 100,4 | |
| Dec | 107,1 | 100,4 | 98,5 | 106,1 | 104,7 | 95,9 | |
| Year | 108,3 | 102,1 | 95,4 | 100,0 | 99,1 | 96,0 | |

1/ Preliminary.

Table 2 – Year-on-year percentage change in the volume of mining production

| Month | 2008 | 2009 | 2010 | 2011 | 2012 | 2013 | 2013 year-to-date |
|-------------|-------------|-------------|------------|-------------|-------------|------|----------------------|
| Jan | -12,4 | -9,6 | 9,1 | 0,2 | -3,5 | 6,2 | 6,2 |
| Feb | -7,9 | -10,8 | 6,7 | 2,4 | -10,2 | 6,9 | 6,6 |
| Mar | -16,8 | -2,2 | 11,0 | -0,6 | -6,2 | -3,8 | 2,8 |
| Apr | -2,6 | -11,0 | 0,5 | 11,2 | -10,0 | -0,4 | 1,9 |
| May | -0,9 | -9,7 | -6,7 | 8,9 | 2,7 | | |
| Jun | -4,1 | -5,5 | 0,9 | -0,6 | 5,5 | | |
| Jul | -6,8 | 3,3 | -0,5 | -5,0 | 8,0 | | |
| Aug | -4,0 | -8,2 | 8,8 | -4,6 | 2,4 | | |
| Sep | -2,1 | -11,8 | 9,7 | -3,1 | -7,1 | | |
| Oct | 2,1 | -9,9 | 5,0 | -10,0 | -8,3 | | |
| Nov | -6,3 | -1,5 | 7,7 | -4,1 | -3,5 | | |
| Dec | -6,3 | -1,9 | 7,7 | -1,3 | -8,4 | | |
| Year | -5,6 | -6,6 | 4,8 | -0,9 | -3,2 | | |

Table 3 – Seasonally adjusted volume of total mining production

| Month | Index (Base: 2010=100) | | | | Month-on-month % change | | | |
|-------|------------------------|-------|-------|-------|-------------------------|------|------|------|
| | 2010 | 2011 | 2012 | 2013 | 2010 | 2011 | 2012 | 2013 |
| Jan | 98,7 | 98,9 | 94,4 | 100,1 | 2,9 | -5,0 | -8,2 | 4,6 |
| Feb | 98,8 | 102,2 | 89,9 | 97,7 | 0,1 | 3,3 | -4,8 | -2,4 |
| Mar | 103,0 | 102,3 | 96,1 | 92,9 | 4,3 | 0,1 | 6,9 | -4,9 |
| Apr | 96,3 | 107,5 | 96,6 | 96,1 | -6,5 | 5,1 | 0,5 | 3,4 |
| May | 91,1 | 99,3 | 102,0 | | -5,4 | -7,6 | 5,6 | |
| Jun | 98,1 | 97,4 | 102,8 | | 7,7 | -1,9 | 0,8 | |
| Jul | 98,9 | 93,8 | 101,2 | | 0,8 | -3,7 | -1,6 | |
| Aug | 101,9 | 96,9 | 99,0 | | 3,0 | 3,3 | -2,2 | |
| Sep | 101,4 | 99,3 | 92,9 | | -0,5 | 2,5 | -6,2 | |
| Oct | 102,2 | 91,7 | 84,7 | | 0,8 | -7,7 | -8,8 | |
| Nov | 103,9 | 99,3 | 95,4 | | 1,7 | 8,3 | 12,6 | |
| Dec | 104,1 | 102,8 | 95,7 | | 0,2 | 3,5 | 0,3 | |

Table 4 – Index of the volume of mining production by mineral group and mineral (Base: 2010=100) 1/

| Mineral group and mineral | Weight (2010) | Nov-12 | Dec-12 | Jan-13 | Feb-13 | Mar-13 | Apr-13 |
|-----------------------------|---------------|--------------|-------------|-------------|-------------|-------------|-------------|
| Gold | 17,7 | 67,9 | 74,0 | 69,4 | 76,5 | 82,1 | 78,5 |
| Iron ore | 14,4 | 116,1 | 119,6 | 112,4 | 100,3 | 119,4 | 116,6 |
| Chromium ore | 2,2 | 125,1 | 96,7 | 89,1 | 100,7 | 105,8 | 102,1 |
| Copper | 1,4 | 90,5 | 99,3 | 95,1 | 90,9 | 94,4 | 103,1 |
| Manganese ore | 3,6 | 127,8 | 134,0 | 125,8 | 123,2 | 131,1 | 136,4 |
| PGMs | 24,6 | 104,6 | 99,6 | 75,2 | 75,2 | 86,3 | 66,1 |
| Nickel | 2,0 | 122,9 | 115,7 | 109,5 | 99,0 | 121,5 | 119,4 |
| Other metallic minerals | 2,5 | 98,0 | 77,7 | 72,4 | 48,0 | 63,2 | 66,3 |
| Diamonds | 3,1 | 91,7 | 117,5 | 84,6 | 75,9 | 71,5 | 69,3 |
| Coal | 23,7 | 105,8 | 89,7 | 98,2 | 95,9 | 87,3 | 102,0 |
| Building materials | 1,6 | 117,8 | 72,6 | 85,8 | 108,0 | 103,6 | 106,3 |
| Other non-metallic minerals | 3,2 | 81,5 | 74,6 | 80,6 | 69,5 | 74,1 | 75,9 |
| Total | 100,0 | 100,4 | 95,9 | 88,6 | 86,6 | 92,3 | 90,0 |

1/ All values in this table are preliminary.

Table 5 – Seasonally adjusted index of the volume of mining production by mineral group and mineral (Base: 2010=100)

| Mineral group and mineral | Nov-12 | Dec-12 | Jan-13 | Feb-13 | Mar-13 | Apr-13 | Month-on-month % change |
|-----------------------------|-------------|-------------|--------------|-------------|-------------|-------------|-------------------------|
| Gold | 65,8 | 73,6 | 82,1 | 82,1 | 82,4 | 84,4 | 2,4 |
| Iron ore | 115,5 | 116,9 | 118,0 | 109,3 | 122,5 | 122,6 | 0,1 |
| Chromium ore | 116,9 | 107,6 | 106,7 | 112,6 | 115,5 | 109,2 | -5,5 |
| Copper | 80,8 | 89,7 | 97,8 | 95,2 | 93,2 | 100,3 | 7,6 |
| Manganese ore | 123,6 | 128,8 | 144,5 | 135,4 | 143,8 | 147,1 | 2,3 |
| PGMs | 93,1 | 85,5 | 89,3 | 98,7 | 85,2 | 74,3 | -12,8 |
| Nickel | 121,1 | 117,2 | 109,3 | 103,7 | 118,8 | 115,0 | -3,2 |
| Other metallic minerals | 101,5 | 78,7 | 70,8 | 52,9 | 63,4 | 67,7 | 6,8 |
| Diamonds | 91,0 | 143,4 | 106,9 | 84,6 | 84,7 | 78,0 | -7,9 |
| Coal | 101,0 | 99,3 | 108,9 | 102,5 | 85,0 | 107,5 | 26,5 |
| Building materials | 105,8 | 102,9 | 120,8 | 109,4 | 96,1 | 113,4 | 18,0 |
| Other non-metallic minerals | 82,7 | 80,2 | 84,3 | 74,9 | 74,1 | 76,4 | 3,1 |
| Total | 95,4 | 95,7 | 100,1 | 97,7 | 92,9 | 96,1 | 3,4 |

Table 6 – Year-on-year percentage change in the volume of mining production by mineral group and mineral

| Mineral group and mineral | Nov-12 | Dec-12 | Jan-13 | Feb-13 | Mar-13 | Apr-13 |
|-----------------------------|-------------|-------------|------------|------------|-------------|-------------|
| Gold | -32,1 | -21,2 | -9,4 | -5,8 | -7,2 | -3,1 |
| Iron ore | 5,5 | 17,4 | 34,0 | -2,4 | 9,6 | 3,1 |
| Chromium ore | 9,2 | -2,0 | -5,0 | 0,2 | 13,3 | 5,7 |
| Copper | -23,4 | -19,5 | 3,8 | 0,3 | -23,7 | 10,1 |
| Manganese ore | 10,7 | 4,0 | 14,9 | -1,4 | 12,5 | 21,6 |
| PGMs | 2,9 | -23,2 | 1,9 | 66,0 | 1,8 | -13,4 |
| Nickel | 5,0 | -13,5 | 0,3 | 25,0 | 13,8 | 0,2 |
| Other metallic minerals | -8,7 | -31,3 | -37,3 | -52,0 | -41,4 | -39,2 |
| Diamonds | 21,6 | 186,6 | 59,0 | 13,6 | 21,0 | 14,5 |
| Coal | 0,9 | -4,9 | 6,2 | 1,5 | -16,1 | 7,8 |
| Building materials | 1,1 | 1,7 | 17,4 | 6,9 | -3,5 | 13,6 |
| Other non-metallic minerals | -13,6 | -12,2 | 0,8 | -12,5 | -11,2 | -6,3 |
| Total | -3,5 | -8,4 | 6,2 | 6,9 | -3,8 | -0,4 |

Table 7 – Contribution of each mineral group and mineral to the year-on-year percentage change in the volume of mining production (percentage points)

| Mineral group and mineral | Nov-12 | Dec-12 | Jan-13 | Feb-13 | Mar-13 | Apr-13 |
|-----------------------------|-------------|-------------|------------|------------|-------------|-------------|
| Gold | -5,5 | -3,4 | -1,5 | -1,0 | -1,2 | -0,5 |
| Iron ore | 0,8 | 2,4 | 4,9 | -0,4 | 1,6 | 0,6 |
| Chromium ore | 0,2 | 0,0 | -0,1 | 0,0 | 0,3 | 0,1 |
| Copper | -0,4 | -0,3 | 0,1 | 0,0 | -0,4 | 0,1 |
| Manganese ore | 0,4 | 0,2 | 0,7 | -0,1 | 0,5 | 1,0 |
| PGMs | 0,7 | -7,1 | 0,4 | 9,1 | 0,4 | -2,8 |
| Nickel | 0,1 | -0,3 | 0,0 | 0,5 | 0,3 | 0,0 |
| Other metallic minerals | -0,2 | -0,8 | -1,3 | -1,6 | -1,2 | -1,2 |
| Diamonds | 0,5 | 2,3 | 1,2 | 0,3 | 0,4 | 0,3 |
| Coal | 0,2 | -1,0 | 1,6 | 0,4 | -4,1 | 1,9 |
| Building materials | 0,0 | 0,0 | 0,2 | 0,1 | -0,1 | 0,2 |
| Other non-metallic minerals | -0,4 | -0,3 | 0,0 | -0,4 | -0,3 | -0,2 |
| Total | -3,5 | -8,4 | 6,2 | 6,9 | -3,8 | -0,4 |

Table 8 – Mineral sales at current prices (R million)

| Month | 2007 | 2008 | 2009 | 2010 | 2011 | 2012 1/ | 2013 1/ |
|--------------|------------------|------------------|------------------|------------------|------------------|------------------|----------|
| Jan | 15 692,9 | 17 442,2 | 17 263,9 | 19 185,1 | 25 367,7 | 28 808,5 | 28 642,0 |
| Feb | 17 928,6 | 21 737,4 | 19 906,3 | 20 408,4 | 27 544,0 | 29 223,7 | 30 175,6 |
| Mar | 18 555,2 | 25 894,1 | 22 093,9 | 23 860,1 | 31 486,9 | 30 795,3 | 34 039,4 |
| Apr | 17 447,8 | 25 520,6 | 20 733,6 | 23 551,4 | 27 388,9 | 26 744,9 | |
| May | 19 841,6 | 26 737,6 | 18 463,5 | 25 535,2 | 27 851,9 | 31 229,6 | |
| Jun | 19 033,2 | 29 881,0 | 20 337,3 | 25 882,9 | 33 949,7 | 33 922,1 | |
| Jul | 17 449,4 | 27 164,7 | 20 019,7 | 25 588,6 | 27 910,5 | 30 867,6 | |
| Aug | 17 890,4 | 27 064,3 | 20 144,0 | 25 897,8 | 30 304,5 | 31 361,9 | |
| Sep | 19 619,7 | 27 830,7 | 20 737,7 | 27 994,7 | 35 735,9 | 30 319,1 | |
| Oct | 18 713,7 | 27 191,4 | 19 909,8 | 27 535,5 | 33 429,6 | 28 220,2 | |
| Nov | 20 674,4 | 23 991,0 | 20 128,7 | 27 114,9 | 35 304,5 | 29 878,5 | |
| Dec | 21 590,8 | 20 259,5 | 21 626,2 | 27 737,9 | 34 557,3 | 32 914,2 | |
| Total | 224 437,7 | 300 714,5 | 241 364,6 | 300 292,5 | 370 831,4 | 364 285,6 | |

1/ Preliminary.

Table 9 – Year-on-year percentage change in mineral sales at current prices

| Month | 2008 | 2009 | 2010 | 2011 | 2012 | 2013 | 2013 year-to-date |
|--------------|-------------|--------------|-------------|-------------|-------------|------|-------------------|
| Jan | 11,1 | -1,0 | 11,1 | 32,2 | 13,6 | -0,6 | -0,6 |
| Feb | 21,2 | -8,4 | 2,5 | 35,0 | 6,1 | 3,3 | 1,4 |
| Mar | 39,6 | -14,7 | 8,0 | 32,0 | -2,2 | 10,5 | 4,5 |
| Apr | 46,3 | -18,8 | 13,6 | 16,3 | -2,4 | | |
| May | 34,8 | -30,9 | 38,3 | 9,1 | 12,1 | | |
| Jun | 57,0 | -31,9 | 27,3 | 31,2 | -0,1 | | |
| Jul | 55,7 | -26,3 | 27,8 | 9,1 | 10,6 | | |
| Aug | 51,3 | -25,6 | 28,6 | 17,0 | 3,5 | | |
| Sep | 41,9 | -25,5 | 35,0 | 27,7 | -15,2 | | |
| Oct | 45,3 | -26,8 | 38,3 | 21,4 | -15,6 | | |
| Nov | 16,0 | -16,1 | 34,7 | 30,2 | -15,4 | | |
| Dec | -6,2 | 6,7 | 28,3 | 24,6 | -4,8 | | |
| Total | 34,0 | -19,7 | 24,4 | 23,5 | -1,8 | | |

Table 10 – Seasonally adjusted mineral sales at current prices

| Month | R million | | | | Month-on-month % change | | | |
|-------|-----------|----------|----------|----------|-------------------------|------|------|------|
| | 2010 | 2011 | 2012 | 2013 | 2010 | 2011 | 2012 | 2013 |
| Jan | 22 223,3 | 28 898,3 | 32 995,0 | 32 553,6 | 3,8 | 7,0 | -1,9 | 2,7 |
| Feb | 21 892,2 | 29 735,6 | 31 242,9 | 32 250,3 | -1,5 | 2,9 | -5,3 | -0,9 |
| Mar | 22 776,0 | 30 059,0 | 29 532,1 | 32 831,7 | 4,0 | 1,1 | -5,5 | 1,8 |
| Apr | 24 762,3 | 29 061,7 | 28 400,5 | | 8,7 | -3,3 | -3,8 | |
| May | 25 537,4 | 28 237,2 | 31 523,6 | | 3,1 | -2,8 | 11,0 | |
| Jun | 23 901,2 | 31 032,8 | 31 343,7 | | -6,4 | 9,9 | -0,6 | |
| Jul | 25 681,1 | 27 979,9 | 31 092,1 | | 7,4 | -9,8 | -0,8 | |
| Aug | 25 899,3 | 30 576,8 | 31 442,6 | | 0,8 | 9,3 | 1,1 | |
| Sep | 26 481,8 | 33 937,7 | 28 863,2 | | 2,2 | 11,0 | -8,2 | |
| Oct | 27 093,1 | 32 816,5 | 27 827,4 | | 2,3 | -3,3 | -3,6 | |
| Nov | 26 559,7 | 34 420,6 | 29 044,4 | | -2,0 | 4,9 | 4,4 | |
| Dec | 27 011,6 | 33 626,0 | 31 684,9 | | 1,7 | -2,3 | 9,1 | |

Table 11 – Mineral sales at current prices by mineral group and mineral (R million) 1/

| Mineral group and mineral | Oct-12 | Nov-12 | Dec-12 | Jan-13 | Feb-13 | Mar-13 |
|-----------------------------|-----------------|-----------------|-----------------|-----------------|-----------------|-----------------|
| Gold | 5 034,6 | 6 196,7 | 5 892,8 | 5 926,1 | 6 118,7 | 6 489,5 |
| Iron ore | 4 038,8 | 3 389,0 | 4 555,5 | 5 200,1 | 4 091,3 | 5 379,9 |
| Chromium ore | 568,4 | 827,1 | 672,0 | 593,7 | 748,6 | 784,8 |
| Copper | 332,6 | 475,5 | 421,9 | 390,2 | 517,4 | 482,0 |
| Manganese ore | 741,1 | 1 006,2 | 1 314,7 | 1 059,1 | 719,3 | 876,3 |
| PGMs | 5 657,5 | 5 934,7 | 7 205,9 | 5 399,0 | 6 658,6 | 7 489,4 |
| Nickel | 593,2 | 618,4 | 436,5 | 515,2 | 544,4 | 332,2 |
| Other metallic minerals | 821,3 | 462,0 | 1 393,4 | 796,1 | 492,7 | 996,5 |
| Coal | 8 021,8 | 8 486,0 | 8 249,3 | 7 261,1 | 7 819,8 | 8 619,8 |
| Building materials | 683,0 | 764,7 | 524,7 | 589,0 | 719,5 | 673,0 |
| Other non-metallic minerals | 1 727,6 | 1 718,2 | 2 247,5 | 912,2 | 1 745,3 | 1 915,9 |
| Total | 28 220,2 | 29 878,5 | 32 914,2 | 28 642,0 | 30 175,6 | 34 039,4 |

1/ All values in this table are preliminary.

Table 12 – Seasonally adjusted mineral sales at current prices by mineral group and mineral (R million)

| Mineral group and mineral | Nov-12 | Dec-12 | Jan-13 | Feb-13 | Mar-13 | Month-on-month % change |
|-----------------------------|-----------------|-----------------|-----------------|-----------------|-----------------|-------------------------|
| Gold | 5 538,1 | 5 720,2 | 7 505,6 | 6 376,5 | 6 579,9 | 3,2 |
| Iron ore | 3 491,2 | 4 569,6 | 5 076,7 | 5 127,4 | 5 040,2 | -1,7 |
| Chromium ore | 849,4 | 747,1 | 762,5 | 754,4 | 742,7 | -1,6 |
| Copper | 478,0 | 473,1 | 481,6 | 479,0 | 406,4 | -15,2 |
| Manganese ore | 1 148,0 | 1 010,7 | 1 246,8 | 812,2 | 1 031,2 | 27,0 |
| PGMs | 5 870,1 | 6 967,7 | 6 130,4 | 7 060,4 | 7 315,5 | 3,6 |
| Nickel | 610,8 | 448,6 | 518,3 | 500,6 | 372,0 | -25,7 |
| Other metallic minerals | 529,9 | 951,0 | 936,7 | 620,4 | 958,1 | 54,4 |
| Coal | 8 132,8 | 8 127,2 | 7 626,1 | 8 079,3 | 8 095,5 | 0,2 |
| Building materials | 692,0 | 700,7 | 750,8 | 741,2 | 613,2 | -17,3 |
| Other non-metallic minerals | 1 704,1 | 1 969,0 | 1 518,1 | 1 698,9 | 1 677,0 | -1,3 |
| Total | 29 044,4 | 31 684,9 | 32 553,6 | 32 250,3 | 32 831,7 | 1,8 |

Table 13 – Year-on-year percentage change in mineral sales at current prices by mineral group and mineral

| Mineral group and mineral | Oct-12 | Nov-12 | Dec-12 | Jan-13 | Feb-13 | Mar-13 |
|-----------------------------|--------------|--------------|-------------|-------------|------------|-------------|
| Gold | -27,0 | -23,0 | -16,1 | 12,4 | -9,2 | 3,5 |
| Iron ore | -26,8 | -37,2 | -18,1 | -1,9 | 11,0 | 13,3 |
| Chromium ore | -32,9 | 18,2 | -2,0 | 8,1 | 9,7 | 37,9 |
| Copper | -36,0 | 10,9 | 6,4 | 7,5 | 0,0 | -17,9 |
| Manganese ore | -13,5 | 68,5 | 9,3 | 98,4 | -11,5 | 21,3 |
| PGMs | -5,4 | -12,0 | -10,1 | 4,7 | 26,0 | 35,0 |
| Nickel | 7,9 | 5,6 | -21,2 | 0,8 | 1,6 | -24,8 |
| Other metallic minerals | -30,5 | -73,0 | 74,6 | 7,3 | -36,7 | 13,3 |
| Coal | -9,0 | 0,3 | -2,7 | -10,8 | -1,0 | 2,1 |
| Building materials | -2,8 | -6,7 | 3,8 | 12,6 | 13,5 | -8,4 |
| Other non-metallic minerals | 10,5 | -5,2 | 68,3 | -46,8 | 5,6 | 3,3 |
| Total | -15,6 | -15,4 | -4,8 | -0,6 | 3,3 | 10,5 |

Table 14 – Contribution of each mineral group and mineral to the year-on-year percentage change in mineral sales at current prices (percentage points)

| Mineral group and mineral | Oct-12 | Nov-12 | Dec-12 | Jan-13 | Feb-13 | Mar-13 |
|-----------------------------|--------------|--------------|-------------|-------------|------------|-------------|
| Gold | -5,6 | -5,2 | -3,3 | 2,3 | -2,1 | 0,7 |
| Iron ore | -4,4 | -5,7 | -2,9 | -0,3 | 1,4 | 2,1 |
| Chromium ore | -0,8 | 0,4 | 0,0 | 0,2 | 0,2 | 0,7 |
| Copper | -0,6 | 0,1 | 0,1 | 0,1 | 0,0 | -0,3 |
| Manganese ore | -0,3 | 1,2 | 0,3 | 1,8 | -0,3 | 0,5 |
| PGMs | -1,0 | -2,3 | -2,3 | 0,8 | 4,7 | 6,3 |
| Nickel | 0,1 | 0,1 | -0,3 | 0,0 | 0,0 | -0,4 |
| Other metallic minerals | -1,1 | -3,5 | 1,7 | 0,2 | -1,0 | 0,4 |
| Coal | -2,4 | 0,1 | -0,7 | -3,1 | -0,3 | 0,6 |
| Building materials | -0,1 | -0,2 | 0,1 | 0,2 | 0,3 | -0,2 |
| Other non-metallic minerals | 0,5 | -0,3 | 2,6 | -2,8 | 0,3 | 0,2 |
| Total | -15,6 | -15,4 | -4,8 | -0,6 | 3,3 | 10,5 |

Survey information

| | | |
|--|----|---|
| Introduction | 1 | Statistics South Africa (Stats SA) publishes monthly mining production indices and mineral sales based on the information furnished by the Department of Mineral Resources (DMR). Data in this release are presented by mineral group and mineral. |
| | 2 | In accordance with international practice, the indices are usually re-based every five years to a new base year. The current base year of the index of the volume of mining production is 2010=100. Both actual and seasonally adjusted figures are presented. |
| | 3 | Due to mining production figures being available earlier than mineral sales figures, mining production indices are published one month earlier than mineral sales. |
| | 4 | The value of mineral sales is calculated, in general, on a free-on-rail/free-on-board basis. |
| | 5 | In order to improve timeliness, some information for the current month had to be estimated due to late response. These estimates will be revised in future statistical release(s) as soon as more up-to-date information is available. |
| Purpose of the survey | 6 | The monthly mining production and sales survey is conducted by the DMR, covering all mining establishments operating in the South African economy. The results of this survey are used to calculate the volume of mining production indices in order to estimate the gross domestic product (GDP) and its components, which in turn are used to develop and monitor government policy. |
| Scope of the survey | 7 | This survey covers mining establishments conducting activities regarding the extracting, dressing and beneficiating of minerals occurring naturally, for example solids such as coal and ores. |
| Classification | 8 | The 1993 edition of the <i>Standard Industrial Classification of all Economic Activities (SIC)</i> , Fifth Edition, Report No. 09-90-02, was used to classify the statistical units in the survey. The SIC is based on the 1990 <i>International Standard Industrial Classification of all Economic Activities (ISIC)</i> with suitable adaptations for local conditions. Each statistical unit is classified to an industry which reflects the predominant activity of the establishment. Statistics in this publication are presented by mineral group and mineral. |
| Statistical unit | 9 | The statistical unit for the collection of information is the mining establishment. An establishment is the smallest economic unit that functions as a separate entity. |
| Related publications | 10 | Users may also wish to refer to the following publications which are available from Stats SA – <ul style="list-style-type: none"> • <i>Bulletin of Statistics</i> issued quarterly; and • <i>SA Statistics</i> issued annually. |
| Rounding-off of figures | 11 | The figures in the tables have, where necessary, been rounded off to the nearest digit shown. There may, therefore, be slight discrepancies between the sums of the constituent items and the totals shown. |
| Historical data and past publications | 12 | Historical mining data and past publications are available on the Stats SA website. Click on the following link (Time series data) or (Past publications) to access the data and releases electronically. |

Technical notes

| | | |
|---|-----------|---|
| Index of the volume of mining production | 1 | The index of the volume of mining production, also known as the production index, is a statistical measure of the change in the volume of production. The production index of a mineral group is the ratio between the volume of production of a mineral group in a given period and the volume of production of the same mineral group in the base period. The current base period is 2010. The production in the base period is set at 100. |
| Index weighting | 2 | The weight of a mineral group is the ratio of the sales of a mineral group to the total sales of the mining industry. The weight of a mineral group reflects the importance of the mineral group in the total mining industry. The weights change over time due to quality changes and changes in relative prices. New weights need to be calculated from time to time |
| | 3 | The weights, which are used to aggregate minerals to mineral groups; and mineral groups to total mining, are based on the value of sales derived from detailed information for 2010 supplied by the Department of Mineral Resources (DMR). |
| Seasonal adjustment | 4 | Seasonally adjusted estimates of all items are generated each month, using the X-11 Seasonal Adjustment Program developed by US Bureau of the Census Economic Research and Analyses Division, 1968. Seasonal adjustment is a means of removing the estimated effects of normal seasonal variation from the series so that the effects of other influences on the series can be more clearly recognised. Seasonal adjustment does not aim to remove irregular or non-seasonal influences which may be present in any particular month. |
| | 5 | Influences that are volatile or unsystematic can still make it difficult to interpret the movement of the series even after adjustment for seasonal variations. This means the month-to-month movements of seasonally adjusted estimates may not be reliable indicators of trend behaviour. |
| Trend cycle | 6 | The trend is the long-term pattern or movement of a time series. The X-11 Seasonal Adjustment Program is used for smoothing seasonally adjusted estimates to estimate the underlying trend cycle. |
| Reliability of estimates | 7 | Figures for the latest 2 calendar years are preliminary. |
| Month-on-month percentage change | 8 | The month-on-month percentage change in a variable for any given month is the change between that month and the previous month, expressed as a percentage of the latter. |
| Year-on-year percentage change | 9 | The year-on-year percentage change in a variable for any given period is the change between that period and the corresponding period of the previous year, expressed as a percentage of the latter. |
| Index contribution (percentage points) | 10 | The contribution (percentage points) of a mineral group or mineral to the percentage change in the total mining production for a given period is calculated by multiplying the difference in the index for each mineral group or mineral by the weight of the mineral group or mineral and then dividing by the previous period's total index. |
| Sales contribution (percentage points) | 11 | The contribution (percentage points) to the percentage change in total sales for a given period is calculated by multiplying the percentage change of each mineral group or mineral with its percentage contribution to total mineral sales of the previous period, divided by 100. |

Glossary

| | | | | | | | | | | | | | | | | | |
|-------------------------------------|--|-----|---------------------------------|-----|------------------------|------|--|------|-----------------------|-----|---|-----|-----------------------------|----------|-------------------------|---|---------|
| Free-on-rail | Free-on-rail relates to goods sold on the local market where no railage or road transport costs are involved. | | | | | | | | | | | | | | | | |
| Free-on-board | Free-on-board relates to goods destined for the export market. Railage, road transport and docking charges are involved but no charges are made for the transport by sea. | | | | | | | | | | | | | | | | |
| Industry | An industry consists of a group of establishments engaged in the same or similar kinds of economic activity. Industries are defined in the <i>System of National Accounts (SNA)</i> in the same way as in the <i>Standard Industrial Classification (SIC) of all Economic Activities</i> , Fifth Edition of January 1993. | | | | | | | | | | | | | | | | |
| PGMs – Platinum group metals | Platinum group metals include platinum; iridium; osmiridium; palladium; rhodium; ruthenium and osmium. | | | | | | | | | | | | | | | | |
| Sales | Sales are the total value of sales of primary minerals at the first point of saleability by the mining establishment. | | | | | | | | | | | | | | | | |
| Symbols and abbreviations | <table border="0"> <tr> <td>DMR</td> <td>Department of Mineral Resources</td> </tr> <tr> <td>GDP</td> <td>Gross domestic product</td> </tr> <tr> <td>ISIC</td> <td>International Standard Industrial Classification</td> </tr> <tr> <td>PGMs</td> <td>Platinum group metals</td> </tr> <tr> <td>SIC</td> <td>Standard Industrial Classification of all Economic Activities</td> </tr> <tr> <td>SNA</td> <td>System of National Accounts</td> </tr> <tr> <td>Stats SA</td> <td>Statistics South Africa</td> </tr> <tr> <td>*</td> <td>Revised</td> </tr> </table> | DMR | Department of Mineral Resources | GDP | Gross domestic product | ISIC | International Standard Industrial Classification | PGMs | Platinum group metals | SIC | Standard Industrial Classification of all Economic Activities | SNA | System of National Accounts | Stats SA | Statistics South Africa | * | Revised |
| DMR | Department of Mineral Resources | | | | | | | | | | | | | | | | |
| GDP | Gross domestic product | | | | | | | | | | | | | | | | |
| ISIC | International Standard Industrial Classification | | | | | | | | | | | | | | | | |
| PGMs | Platinum group metals | | | | | | | | | | | | | | | | |
| SIC | Standard Industrial Classification of all Economic Activities | | | | | | | | | | | | | | | | |
| SNA | System of National Accounts | | | | | | | | | | | | | | | | |
| Stats SA | Statistics South Africa | | | | | | | | | | | | | | | | |
| * | Revised | | | | | | | | | | | | | | | | |

Technical enquiries

| | |
|----------------------|---|
| JP Terblanche | Telephone number: (012) 310 2965 Email: juan-pierret@statssa.gov.za |
| Martin Kohler | Telephone number: (012) 444 3734 Email: martin.kohler@dmr.gov.za |
| Gerda Bruwer | Telephone number: (012) 310 8249 Email: gerdab@statssa.gov.za |

General information

Stats SA publishes approximately 300 different statistical releases each year. It is not economically viable to produce them in more than one of South Africa's eleven official languages. Since the releases are used extensively, not only locally but also by international economic and social-scientific communities, Stats SA releases are published in English only.

Stats SA has copyright on this publication. Users may apply the information as they wish, provided that they acknowledge Stats SA as the source of the basic data wherever they process, apply, utilise, publish or distribute the data: and also that they specify that the relevant application and analysis (where applicable) result from their own processing of the data.

Advance release calendar

An advance release calendar is disseminated on www.statssa.gov.za

Stats SA products

A complete set of Stats SA publications is available at the Stats SA Library and the following libraries:

National Library of South Africa, Pretoria Division
National Library of South Africa, Cape Town Division
Natal Society Library, Pietermaritzburg
Library of Parliament, Cape Town
Bloemfontein Public Library
Johannesburg Public Library
Eastern Cape Library Services, King William's Town
Central Regional Library, Polokwane
Central Reference Library, Nelspruit
Central Reference Collection, Kimberley
Central Reference Library, Mmabatho

Stats SA also provides a subscription service.

Electronic services

A large range of data is available via online services. For more detail about our electronic services, contact Stats SA's user information service at (012) 310 8600.

You can visit us on the Internet at: www.statssa.gov.za

General enquiries

| | |
|------------------------------|---|
| User information services | Telephone number: (012) 310 8600 Email address: info@statssa.gov.za |
| Orders/subscription services | Telephone number: (012) 310 8358 Email address: magdaj@statssa.gov.za |
| Postal address | Private Bag X44, Pretoria, 0001 |

Produced by Stats SA