

**Department of
Minerals and Energy**

Mining: Production and sales (preliminary)

April 2005

**Embargoed until:
9 June 2005
11:00**

**Published jointly by
Statistics South Africa and the Department of Minerals and Energy**

Table A – Selected key figures regarding mining production for April 2005

Annual estimates

	April 2005	% change between April 2004 and April 2005	% change between February 2004 to April 2004 and February 2005 to April 2005
Index of the physical volume of mining production (2000=100)			
Gold	63,6	-16,3%	-12,6%
Non-gold minerals	129,5	+12,6%	+9,5%
Total	112,5	+7,1%	+5,2%

Shorter term seasonally adjusted estimates

	April 2005	% change between March 2005 and April 2005	% change between November 2004 to January 2005 and February 2005 to April 2005
Index of the physical volume of mining production (2000=100)			
Gold	66,3	-10,3%	-6,6%
Non-gold minerals	134,2	-2,0%	+2,2%
Total	116,8	-3,2%	+0,7%

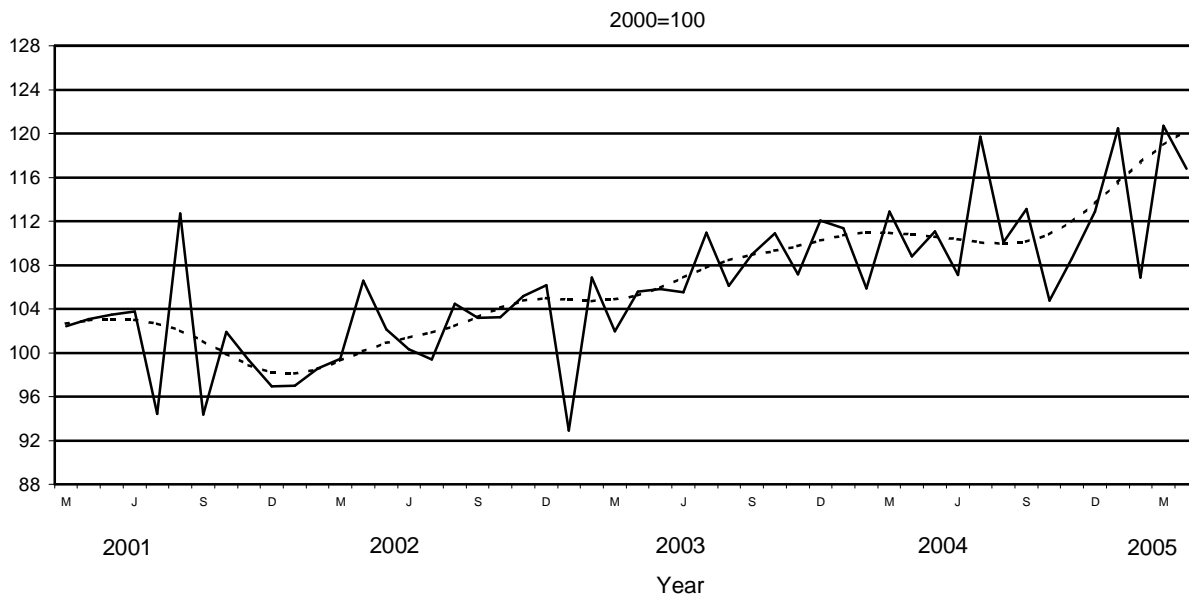
Key findings regarding mining production as at the end of April 2005

Mining production increases

The total mining production for the three months ended April 2005, after seasonal adjustment, increased by 0,7% compared with the previous three months. This increase was due to a seasonally adjusted increase of 2,2% in the production of non-gold minerals during the first quarter of 2005 compared with the fourth quarter of 2004. The seasonally adjusted increase of 2,2% in the production of non-gold minerals was mainly due to an increase in the production of PGM's (+2,5 percentage points) (see table 4).

The reduction on the gold production for April 2005 was due to labour disruptions in three of the biggest mines and technical problems in one of the mines.

**Figure 1 - Indices of physical volume of total mining production including gold
(Month on month)**



Source: Stats SA

— Seasonally adjusted - - - - Trend cycle

Table B – Selected key figures regarding mineral sales for March 2005

Annual estimates

	March 2005 R million	% change between March 2004 and March 2005	% change between January 2004 to March 2004 and January 2005 to March 2005
Mineral sales			
Gold	3 068,0	+14,2%	-8,7%
Non-gold minerals	8 615,9	+11,7%	+8,1%
Total	11 683,9	+12,4%	+3,9%

**Shorter term seasonally
adjusted estimates**

	March 2005 R million	% change between February 2005 and March 2005	% change between October 2004 to December 2004 and January 2005 to March 2005
Mineral sales			
Gold	3 008,1	+40,9%	-4,0%
Non-gold minerals	8 566,1	+8,9%	-1,8%
Total	11 574,2	+15,7%	-2,3%

Key findings regarding mineral sales as at the end of March 2005

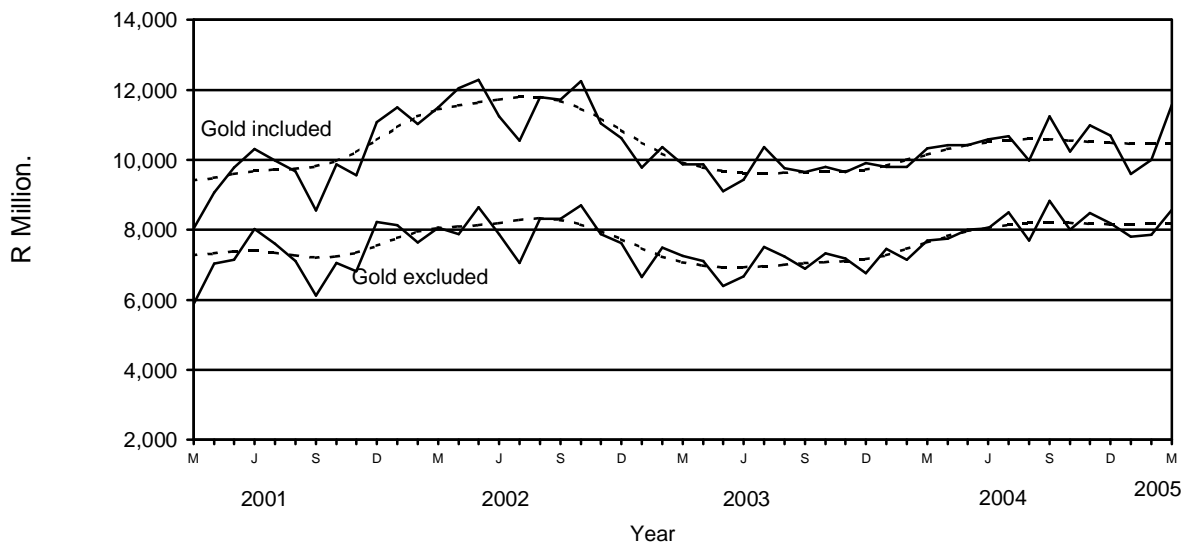
Mineral sales decrease

The seasonally adjusted value of mineral sales at current prices for the first quarter of 2005 reflected a decrease of 2,3% compared with fourth quarter of 2004. However, the actual value of mineral sales at current prices for the first quarter of 2005 increased by 3,9% compared with the first quarter of 2004.

The decrease of 2,3% in the seasonally adjusted value of mineral sales for first quarter of 2005 compared with fourth quarter of 2004 can be attributed to a decrease of 4,0% (-R286,1 million) in sales of gold and a decrease of 1,8% (-R441,6 million) in sales of non-gold minerals during the same period.

The major contributors to the increase of 3,9% in the actual value of mineral sales at current prices for the first quarter of 2005 compared with fourth quarter of 2004 were other non-metallic minerals (+3,4 percentage points or +R1 023,4 million) and coal (+3,0 percentage points or +R891,5 million). However, this increase was counteracted by a decrease in the sales of PGM's (-2,8 percentage points or -R839,9 million) and gold (-2,2 percentage points or -R661,5 million) (see table 8).

Figure 2 - Total value of mineral sales including gold



Source: Stats SA

— Seasonally adjusted

- - - Trend cycle

PP
P J Lehohla
Statistician-General

PP
S Nogxina
Director-General
Department of Minerals and Energy

Contents

Notes	5
Tables	
Table 1 Index of the physical volume of mining production including gold (Base 2000=100)	6
Table 2 Index of the physical volume of mining production excluding gold (Base 2000=100)	6
Table 3 Indices of physical volume of mining production according to mining divisions, mineral groups and minerals (Base 2000=100)	7
Table 4 Contribution of the mining divisions to the total mining production (Base 2000=100)	7
Table 5 Total value of mineral sales including gold (R million)	8
Table 6 Total value of mineral sales excluding gold (R million)	8
Table 7 Total value of mineral sales according to mining divisions, mineral groups and minerals (R million)	9
Table 8 Contribution of the mining divisions to the total value of mineral sales	9
Table 9 Percentage change in indices of mining production between the current month and the corresponding month of the previous year	10
Table 10 Percentage change in indices of mining production between the current quarter and the corresponding quarter of the previous year	10
Table 11 Percentage change in seasonally adjusted indices of mining production between the current month and the previous month	10
Table 12 Percentage change in seasonally adjusted indices of mining production between the current quarter and the previous quarter	10
Table 13 Percentage change in actual value of mineral sales between the current month and the corresponding month of the previous year	11
Table 14 Percentage change in actual value of mineral sales between the current quarter and the corresponding quarter of the previous year	11
Table 15 Percentage change in seasonally adjusted value of mineral sales between the current month and the previous month	11
Table 16 Percentage change in seasonally adjusted value of mineral sales between the current quarter and the previous quarter	11
Explanatory notes	12
Glossary	14
General information	15

Notes

Forthcoming issue	Issue	Expected date of publication
--------------------------	--------------	-------------------------------------

	May 2005	
--	----------	--

		12 July 2005
--	--	--------------

Purpose of the survey	
------------------------------	--

	The monthly mining production and sales survey is a survey conducted by the Minerals Bureau, covering all mining establishments operating in the South African economy. The results of this survey are used to calculate physical volume of mining production indices in order to estimate the gross domestic product (GDP) and its components, which in turn are used to develop and monitor Government policy.
--	--

Table 1 - Index of the physical volume of mining production including gold (Base 2000=100)

Month	1999	2000	2001	2002	2003	2004*	2005*
Actual indices							
J	92,6	93,8	95,0	89,0	85,1	100,7	108,3
F	99,0	99,3	96,8	94,2	101,7	97,8	98,9
M	104,8	100,0	102,3	99,1	101,8	112,9	120,7
A	96,2	95,0	98,9	102,0	101,0	105,0	1/ 112,5
M	104,5	95,7	103,6	102,9	107,1	113,0	
J	103,7	106,8	108,4	104,1	108,6	111,1	
J	102,5	96,9	93,5	99,0	110,7	119,5	
A	98,4	102,1	115,2	107,2	109,1	114,3	
S	104,4	104,9	98,4	108,1	114,6	117,4	
O	104,2	100,0	105,1	106,7	114,5	108,2	
N	107,0	105,5	102,6	107,5	108,6	111,2	
D	100,9	100,2	97,2	107,0	113,5	115,2	
Year	101,5	100,0	101,4	102,2	106,4	110,5	
Seasonally adjusted indices							
J	98,3	103,0	104,9	97,8	93,4	111,4	120,5
F	100,1	103,6	101,8	100,2	109,9	106,0	106,9
M	102,0	99,6	102,4	99,3	102,1	112,9	120,7
A	97,4	98,7	102,6	106,0	104,5	108,8	116,8
M	103,7	95,5	103,2	102,1	105,9	111,1	
J	98,3	101,9	103,4	99,8	104,4	107,1	
J	102,8	97,5	93,8	98,8	110,8	119,7	
A	95,9	99,9	112,2	103,8	105,4	110,1	
S	99,4	103,4	96,3	105,1	110,6	113,1	
O	100,4	96,1	100,9	102,9	110,8	104,8	
N	102,8	101,7	99,4	104,7	106,1	108,6	
D	100,5	99,3	95,0	104,5	110,7	112,9	

Table 2 - Index of the physical volume of mining production excluding gold (Base 2000=100)

Month	1999	2000	2001	2002	2003	2004*	2005*
Actual indices							
J	90,6	94,4	98,3	89,6	85,7	110,0	122,1
F	96,1	96,4	98,6	95,8	107,3	104,0	109,1
M	98,6	97,9	104,4	101,0	106,2	123,6	136,6
A	91,6	94,1	102,2	105,3	106,3	115,0	1/ 129,5
M	105,1	96,6	108,9	107,0	114,7	124,8	
J	100,7	107,5	112,5	107,3	116,4	121,1	
J	103,5	97,6	93,7	102,4	118,8	133,1	
A	97,1	101,7	124,5	111,2	116,3	125,4	
S	100,6	105,1	99,7	111,4	122,9	130,0	
O	104,6	100,6	110,2	111,9	124,2	119,6	
N	107,7	107,4	106,8	113,3	116,2	122,8	
D	97,2	100,8	97,7	111,2	123,3	127,6	
Year	99,5	100,0	104,8	105,6	113,2	121,4	
Seasonally adjusted indices							
J	95,8	103,4	108,5	98,5	94,0	122,1	136,4
F	98,1	101,2	104,4	102,9	117,2	114,0	119,0
M	98,3	98,3	105,2	101,9	107,1	124,0	136,9
A	93,6	97,9	106,1	109,6	109,9	119,1	134,2
M	102,6	95,1	107,3	105,0	112,2	121,6	
J	96,0	102,2	107,0	102,6	111,7	116,6	
J	102,5	97,4	93,2	101,6	118,6	133,2	
A	95,5	99,9	121,5	107,7	112,3	120,8	
S	97,6	105,1	98,7	109,2	119,3	125,7	
O	99,5	95,4	104,6	106,9	119,2	115,0	
N	102,9	103,0	103,0	110,0	113,2	119,7	
D	99,8	101,0	96,0	109,2	120,7	125,7	

* Revised

1/ Preliminary

Table 3 - Indices of physical volume of mining production according to mining divisions, mining groups and minerals(Base 2000=100)

Minerals	Weights	Actual indices				Seasonally adjusted indices			
		2004	2005		2004	2005		2004	
			Apr.	Mar. *		Apr.	Apr.		Mar.
Total, gold included	100,0	110,5	112,5	120,7	105,0	116,8	120,7	108,8	
Total, gold excluded	74,3	121,4	129,5	136,6	115,0	134,2	136,9	119,1	
Gold	25,7	78,9	63,6	74,8	76,0	66,3	73,9	79,1	
Iron ore	3,1	117,4	131,2	113,2	111,6	130,9	113,7	112,2	
Chrome	1,1	114,7	130,0	121,2	108,4	133,5	130,7	111,3	
Copper	1,6	74,1	76,4	79,2	68,0	81,1	79,7	71,2	
Manganese ore	1,3	113,5	118,8	117,6	111,6	121,2	125,6	114,5	
PGM*	27,6	138,7	149,2	178,8	141,6	155,1	174,3	146,7	
Nickel	2,0	108,9	108,8	124,4	113,6	122,1	135,2	125,9	
Other metallic minerals	2,9	83,3	96,0	96,4	75,6	97,6	95,8	76,7	
Diamonds	8,4	134,2	150,0	132,0	112,4	155,7	130,8	116,6	
Coal	20,0	109,7	110,0	104,0	99,2	111,6	107,3	101,0	
Building materials	2,6	112,6	115,6	118,0	108,4	118,1	114,8	110,8	
Other non-metallic minerals	3,8	98,9	115,6	117,2	74,0	130,8	130,4	83,4	

* Revised

Table 4 - Contribution of the mining divisions to the total mining production (Base 2000=100)

Mining division	Percentage contribution to the total mining production using the weights	Average seasonally adjusted Production index for February 2005 to April 2005	Quarterly percentage change February 2005 to April 2005 compared with the preceding three months	Contribution (percentage points) to the percentage change in the total mining production 1/ three months
Gold	25,7	70,7	-6,6	-1,7
Non-gold minerals				
Iron ore	3,1	122,0	-0,3	0,0
Copper	1,6	79,1	10,0	0,2
Manganese ore	1,3	126,3	-3,7	0,0
Chromium	1,1	133,1	7,0	0,1
PGM's	27,6	151,4	9,1	2,5
Nickel	2,0	126,0	4,5	0,1
Other metallic minerals	2,9	94,2	6,3	0,2
Diamonds	8,3	144,7	-4,4	-0,4
Coal	20,0	108,8	-1,5	-0,3
Building materials	2,6	116,9	2,4	-0,1
Other non-metallic minerals	3,8	122,1	-2,1	0,1
Total non-gold minerals	74,3	130,0	2,2	2,4
Total minerals	100	114,8	0,7	0,7

1/ The contribution is calculated by multiplying the quarterly percentage change of each mining division with its corresponding weight in the base year, divided by 100.

Table 5 - Total value of mineral sales including gold (R million)

Month	1999	2000	2001	2002	2003	2004*	2005*
Actual values							
J	6 098,8	6 244,1	9 241,5	11 387,0	9 868,8	9 820,5	9 467,3
F	5 763,6	7 115,7	9 711,7	10 634,4	10 236,5	9 576,1	9 790,3
M	6 445,1	8 958,5	8 134,9	11 639,2	9 829,3	10 396,0	1/ 11 683,9
A	5 706,5	7 521,3	8 554,2	11 194,9	9 294,1	9 789,3	
M	5 702,9	8 222,7	9 675,9	12 145,3	9 104,1	10 373,3	
J	6 391,3	8 222,5	10 640,7	11 637,2	9 745,9	10 856,0	
J	5 996,1	7 640,3	10 146,3	10 779,9	10 403,7	10 844,2	
A	6 852,9	8 223,4	9 586,4	11 633,5	9 612,0	9 841,7	
S	6 548,3	8 568,9	8 711,5	12 115,1	10 008,1	11 693,2	
O	6 005,9	8 317,6	9 999,6	12 514,2	9 989,4	10 506,8	
N	7 573,0	9 828,5	9 627,7	11 059,4	9 535,8	10 891,7	
D	7 346,9	9 474,9	11 327,7	10 764,4	9 899,2	10 581,6	
Year	76 431,3	98 338,4	115 358,1	137 504,5	117 526,9	125 170,4	
Seasonally adjusted values							
J	5 986,3	6 162,7	9 144,6	11 368,1	9 778,6	9 794,6	9 598,8
F	5 886,3	7 182,7	9 811,6	10 810,0	10 373,3	9 792,7	9 999,8
M	6 486,1	9 491,7	8 105,7	11 605,0	9 867,4	10 323,0	11 574,2
A	5 917,8	7 772,1	8 973,4	11 924,3	9 873,8	10 412,3	
M	5 814,7	8 276,5	9 725,4	12 156,7	9 111,1	10 414,1	
J	6 263,1	7 942,7	10 328,0	11 223,7	9 429,9	10 588,0	
J	5 860,8	7 466,9	10 117,5	10 711,2	10 359,1	10 680,7	
A	6 806,9	8 263,6	9 606,0	11 728,6	9 763,5	9 980,1	
S	6 776,6	8 590,0	8 618,4	11 961,5	9 648,0	11 248,9	
O	5 945,1	8 366,3	9 923,8	12 283,1	9 798,7	10 229,4	
N	7 662,5	9 930,4	9 713,5	11 206,9	9 648,3	10 982,6	
D	7 159,0	9 097,9	10 978,2	10 596,5	9 914,9	10 688,5	

Table 6 - Total value of mineral sales excluding gold (R million)

Month	1999	2000	2001	2002	2003	2004*	2005*
Actual values							
J	4 033,9	4 476,9	7 181,9	8 002,3	6 744,1	7 480,6	7 676,2
F	3 801,6	4 963,8	7 720,8	7 368,2	7 452,6	7 039,8	7 749,1
M	3 938,7	6 688,4	5 912,0	8 110,9	7 140,7	7 710,4	1/ 8 615,9
A	3 802,4	5 790,2	6 748,0	7 481,9	6 815,2	7 366,5	
M	3 826,7	6 166,9	7 139,7	8 619,3	6 477,2	8 029,3	
J	4 413,3	5 908,5	8 245,9	8 035,5	6 759,5	8 107,4	
J	4 061,6	5 700,6	7 779,6	7 344,7	7 613,1	8 699,0	
A	4 956,0	5 892,6	6 942,5	8 065,2	7 052,7	7 546,9	
S	4 480,8	6 479,6	6 219,3	8 562,1	7 092,3	9 114,1	
O	3 947,8	6 047,1	6 971,4	8 711,8	7 345,5	8 129,5	
N	5 038,1	7 529,4	6 953,1	7 981,8	7 154,9	8 482,4	
D	5 139,7	7 422,4	8 532,3	7 834,8	6 825,9	8 134,6	
Year	51 440,6	73 066,4	86 346,5	96 118,5	84 473,7	95 840,5	
Seasonally adjusted values							
J	3 936,5	4 402,8	7 097,3	7 999,9	6 659,7	7 449,2	7 798,0
F	3 808,0	4 933,3	7 758,0	7 435,5	7 490,3	7 143,5	7 864,2
M	4 018,5	7 283,8	5 946,6	8 172,2	7 247,6	7 697,6	8 566,1
A	3 872,4	5 847,0	6 936,8	7 744,4	7 114,6	7 744,2	
M	3 850,1	6 130,4	7 091,6	8 518,6	6 402,9	8 001,0	
J	4 253,3	5 674,1	8 046,1	7 855,9	6 663,8	8 049,1	
J	4 012,7	5 562,8	7 735,1	7 216,4	7 505,5	8 492,1	
A	4 976,2	6 008,8	7 043,6	8 238,0	7 237,1	7 695,7	
S	4 720,4	6 537,2	6 197,4	8 556,5	6 890,2	8 835,0	
O	4 081,9	6 280,8	7 113,8	8 744,3	7 327,6	8 001,4	
N	5 062,3	7 576,3	6 977,4	8 037,7	7 186,7	8 478,1	
D	4 936,3	7 017,1	8 126,3	7 592,1	6 768,8	8 190,4	

* Revised
1/ Preliminary

Table 7 - Total value of mineral sales according to mining divisions, mining groups and minerals (R million)

Minerals	Actual value					Seasonally adjusted value		
	2004	2005		2004	2004	2005		2004
		Mar.	Feb. *			Mar.	Mar.	
Total, gold included	125 170,4	11 683,9	9 790,3	10 396,0	11 574,2	9 999,8	10 323,0	
Total, gold excluded	95 840,5	8 615,9	7 749,1	7 710,4	8 566,1	7 864,2	7 697,6	
Gold	29 329,9	3 068,0	2 041,2	2 685,6	3 008,1	2 135,6	2 625,4	
Iron ore	4 585,5	363,4	453,1	372,4	354,1	446,6	361,2	
Chrome	1 685,5	145,5	141,4	124,1	146,0	147,8	125,0	
Copper	2 026,0	210,3	158,6	164,9	191,2	152,5	146,7	
Manganese ore	1 724,8	139,8	204,2	124,4	150,0	213,9	135,3	
PGM*	33 312,8	2 563,4	2 571,2	3 081,0	2 525,2	2 521,9	3 020,2	
Nickel	3 653,2	357,9	287,3	258,0	402,2	285,4	288,0	
Other metallic minerals	2 873,8	266,6	185,5	187,5	305,1	252,4	213,6	
Coal	28 071,3	2 484,9	2 430,0	2 208,8	2 481,4	2 487,3	2 210,3	
Building materials	3 985,0	359,3	328,2	341,4	352,6	342,1	335,8	
- Granite or norite	491,3	39,4	37,4	43,8	42,1	48,1	47,0	
- Lime and limestone	1 240,3	110,9	82,7	102,4	113,2	87,3	104,7	
- Other building materials	2 253,3	209,1	208,0	195,2	197,3	206,7	184,1	
Other non-metallic minerals	13 922,5	1 724,7	989,5	848,0	1 658,3	1 014,3	861,5	

* Revised

Table 8 - Contribution of the mining divisions to the total value of mineral sales

Mining division	Percentage contribution to total mineral sales during January 2005 to March 2005	Percentage change between January 2004 to March 2004 and January 2005 to March 2005	Contribution (percentage points) to the percentage change in the total value of mineral sales 1/	Difference in sales of mining divisions between January 2004 to March 2004 and January 2005 to March 2005 R million
Gold	25,4	-8,7	-2,2	-661,5
Non-gold minerals				
Iron ore	3,4	12,4	0,4	127,1
Copper	1,5	17,6	0,3	81,3
Manganese ore	1,2	42,9	0,5	155,3
Chromium	1,2	22,6	0,3	80,5
PGM's	27,7	-10,2	-2,8	-839,9
Nickel	3,1	4,8	0,2	45,2
Other metallic minerals	1,9	21,6	0,4	124,9
Coal	21,8	13,7	3,0	891,5
Building materials	3,0	13,7	0,4	121,1
Other non-metallic minerals	9,7	35,3	3,4	1023,4
Total non-gold minerals	74,6	8,1	6,1	1 810,4
Total minerals	100,0	3,9	3,9	1 148,9

1/ The contribution to the percentage change in sales is calculated by multiplying the quarterly percentage change of each mineral with the percentage contribution to total mineral sales during December 2004 to February 2005, divided by 100.

Table 9 - Percentage change in indices of mining production between the current month and the corresponding month of the previous year.

	Actual estimates April 2004	Actual estimates April 2005	% change between April 2004 and April 2005	Difference between April 2004 and April 2005
Gold	76,0	63,6	-16,3%	-12,4
Non-gold minerals	115,0	129,5	+12,6%	14,5
Total	105,0	112,5	+7,1%	7,5

Table 10 - Percentage change in indices of mining production between the current quarter and the corresponding quarter of the previous year.

	Actual estimates February 2004 to April 2004	Actual estimates February 2005 to April 2005	% change between February 2004 to April 2004 and February 2005 to April 2005	Difference between February 2004 to April 2004 and February 2005 to April 2005
Gold	237,6	207,6	-12,6%	-30,0
Non-gold minerals	342,6	375,2	+9,5%	32,6
Total	315,7	332,1	+5,2%	16,4

Table 11 - Percentage change in seasonally adjusted indices of mining production between the current month and the previous month.

	Actual estimates March 2005	Actual estimates April 2005	% change between March 2005 and April 2005	Difference between March 2005 and April 2005
Gold	73,9	66,3	-10,3%	-7,6
Non-gold minerals	136,9	134,2	-2,0%	-2,7
Total	120,7	116,8	-3,2%	-3,9

Table 12 - Percentage change in seasonally adjusted indices of mining production between the current quarter and the previous quarter.

	Actual estimates February 2004 to April 2004	Actual estimates February 2005 to April 2005	% change between February 2004 to April 2004 and February 2005 to April 2005	Difference between February 2004 to April 2004 and February 2005 to April 2005
Gold	227,2	212,2	-6,6%	-15,0
Non-gold minerals	381,8	390,1	+2,2%	8,3
Total	342,0	344,4	+0,7%	2,4

Table 13 - Percentage change in actual value of mineral sales between the current month and the corresponding month of the previous year

	Actual estimates March 2004	Actual estimates March 2005	% change between March 2004 and March 2005	Difference between March 2004 and March 2005
Gold	2 685,6	3 068,0	+14,2%	382,4
Non-gold minerals	7 710,4	8 615,9	+11,7%	905,5
Total	10 396,0	11 683,9	+12,4%	1 287,9

Table 14 - Percentage change in actual value of mineral sales between the current quarter and the corresponding quarter of the previous year.

	Actual estimates January 2004 to March 2004	Actual estimates January 2005 to March 2005	% change between January 2004 to March 2004 and January 2005 to March 2005	Difference between January 2004 to March 2004 and January 2005 to March 2005
Gold	7 561,8	6 900,3	-8,7%	-661,5
Non-gold minerals	22 230,8	24 041,2	+8,1%	1 810,4
Total	29 792,6	30 941,5	+3,9%	1 148,9

Table 15 - Percentage change in seasonally adjusted value of mineral sales between the current month and the previous month.

	Actual estimates February 2005	Actual estimates March 2005	% change between February 2005 and March 2005	Difference between February 2005 and March 2005
Gold	2 135,6	3 008,1	+40,9%	872,5
Non-gold minerals	7 864,2	8 566,1	+8,9%	701,9
Total	9 999,8	11 574,2	+15,7%	1 574,4

Table 16 - Percentage change in seasonally adjusted value of mineral sales between the current quarter and the previous quarter

	Actual estimates October 2004 to December 2004	Actual estimates January 2005 to March 2005	% change between October 2004 to December 2004 and January 2005 to March 2005	Difference between October 2004 to December 2004 and January 2005 to March 2005
Gold	7 230,6	6 944,5	-4,0%	-286,1
Non-gold minerals	24 669,9	24 228,3	-1,8%	-441,6
Total	31 900,5	31 172,8	-2,3%	-727,7

Explanatory notes

- Introduction**
- 1 Statistics South Africa (Stats SA) publishes monthly information regarding the mining industry on the basis of mining production figures and mineral sales furnished by the Minerals Bureau, Department of Minerals and Energy. This statistical release contains detailed information regarding indices of the physical volume of mining production and the total value of mineral sales according to mining divisions and mineral groups on a monthly basis.
 - 2 In accordance with international practice, the indices have to be re-based every five years to a new base year. The base year of the index of the physical volume of mining production is currently 2000=100. Both actual and seasonally adjusted figures are presented.
 - 3 Due to mining production figures being available earlier than mineral sales figures, mining production indices are published one month earlier than mineral sales.
 - 4 The value of mineral sales is calculated, in general, on a free-on-rail/free-on-board basis.
 - 5 In order to improve timeliness, some information for the current month may have been estimated due to late response. These estimates will be revised in future statistical release(s) as soon as more up-to-date information is available.
- Scope of the survey**
- 6 This survey covers mining establishments conducting activities regarding -
 - the extracting, dressing and beneficiating of minerals occurring naturally, for example solids such as coal and ores.
- Classification**
- 7 The 1993 edition of the *Standard Industrial Classification of all Economic Activities (SIC)*, Fifth Edition, Report No. 09-90-02, was used to classify the statistical units in the survey. The SIC is based on the 1990 *International Standard Industrial Classification of all Economic Activities (ISIC)* with suitable adaptations for local conditions. Statistics in this publication are presented at SIC division, major group and subgroup level. Each statistical unit is classified to an industry which reflects the predominant activity of the establishment.
- Statistical unit**
- 8 The basic statistical unit for the collection of information is the mining establishment. An establishment is the smallest economic unit that functions as a separate entity. Each statistical unit is classified to an industry (see paragraph 7).
- Weighting**
- 9 The weights which are used to aggregate minerals to mineral groups and mineral groups to total mining, are based on the value of production derived from detailed information for 2000 supplied by the Minerals Bureau, Department of Minerals and Energy.
- Seasonal adjustment**
- 10 Seasonally adjusted estimates of all items are generated each month, using the X-11 Seasonal Adjustment Program developed by US Bureau of the Census Economic Research and Analyses Division, 1968. Seasonal adjustment is a means of removing the estimated effects of normal seasonal variation from the series so that the effects of other influences on the series can be more clearly recognised. Seasonal adjustment does not aim to remove irregular or non-seasonal influences which may be present in any particular month.
- Influences that are volatile or unsystematic can still make it difficult to interpret the movement of the series even after adjustment for seasonal variations. This means the month-to-month movements of seasonally adjusted estimates may not be reliable indicators of trend behaviour.
- Reliability of estimates**
- 11 Estimates are subject to sampling and non-sampling errors. Figures for the latest month

are preliminary.

- Historical data** **12** More comprehensive detail on the method of calculation and historical data in respect of the production indices according to mining mineral groups for the period February 1990 to November 2002 is available in statistical release P2041.1, entitled *Mining statistics: Indices of the physical volume of mining production, Base: 2000=100, February 1990 to November 2002*, published on 11 February 2003 on the Stats SA website www.statssa.gov.za
- Related publications** **13** Users may also wish to refer to the following publications which are available from Stats SA -
- *Bulletin of Statistics.*
 - *SA Statistics.*
- Unpublished statistics** **14** In some cases Stats SA can also make available statistics not included in standard publications. The statistics can be made available via: computer printouts or diskette or CD. Generally a charge is made for providing unpublished statistics.
- Rounding-off of figures** **15** The figures in the tables have, where necessary, been rounded off to the nearest digit shown. There may, therefore, be slight discrepancies between the sums of the constituent items and the totals shown.

Glossary

Free-on-rail	Free-on-rail relates to goods sold on the local market where no railage or road transport costs are involved.
Free-on-board basis	Free-on-board relates to goods destined for the export market. Railage, road transport and docking charges are involved but no charges are made for the transport by sea.
Index of physical volume of mining production	The index of physical volume of mining production or a production index is a statistical measure of the change in the volume of production. The production index of a mineral group is the ratio between the volume of production of a mineral group in a given period and the volume of production of the same mineral group in the base period. The current base period is 2000. The production in the base period is set at 100.
Industry	An industry consists of a group of establishments engaged in the same or similar kinds of economic activity. Industries are defined in the <i>System of National Accounts (SNA)</i> in the same way as in the <i>Standard Industrial Classification (SIC) of all Economic Activities</i> , Fifth Edition of January 1993.
PGM' s - Platinum Group Metals	Platinum Group Metals includes platinum; iridium; osmiridium; palladium; rhodium; ruthenium and osmium.
Sales	Sales are the total value of sales and transfers-out of goods mined by the mining establishments and the amounts received for installation, erection or assembly or other services rendered.
Weight	The weight of a mineral group is the ratio of the sales of a mineral group to the total sales of the mining industry. The weight of a mineral group reflects the importance of the mineral group in the total mining industry. The weights change over time due to quality changes and changes in relative prices. New weights need to be calculated from time to time.

General information

Stats SA publishes approximately 300 different statistical releases each year. It is not economically viable to produce them in more than one of South Africa's eleven official languages. Since the releases are used extensively, not only locally but also by international economic and social-scientific communities, Stats SA releases are published in English only.

Stats SA has copyright on this publication. Users may apply the information as they wish, provided that they acknowledge Stats SA as the source of the basic data wherever they process, apply, utilise, publish or distribute the data; and also that they specify that the relevant application and analysis (where applicable) result from their own processing of the data.

Advanced release calendar

An advanced release calendar is disseminated on www.statssa.gov.za

Stats SA products

A complete set of Stats SA publications is available in the Stats SA Library, and in the following public libraries:

National Library of South Africa, Pretoria Division
National Library of South Africa, Cape Town Division
Natal Society Library, Pietermaritzburg
Library of Parliament, Cape Town
Bloemfontein Public Library
Johannesburg Public Library
Eastern Cape Library Services, King William's Town
Central Regional Library, Polokwane
Central Reference Library, Nelspruit
Central Reference Collection, Kimberley
Central Reference Library, Mmabatho

Stats SA also provides a subscription service.

Electronic services

A large range of data are available via on-line services, diskette, CD and computer printouts. For more details about our electronic data services, contact (012) 310 8600/8390/8351/4892/8496/8095.

You can visit us on the Internet at: www.statssa.gov.za

Enquiries

Telephone number (012) 317 8494 (Emile Roux)
(012) 310 8600/ 8390/ 8351/ 4892/ 8496/ 8095 (user information services)
(012) 310 8220/ 8228 (technical enquiries)
(012) 310 8161 (orders)
(012) 310 8490 (library)

Fax number: (012) 310 8664 (technical enquiries)

email: emile.roux@dme.gov.za (technical enquiries)
mpelim@statssa.gov.za (technical enquiries)
info@statssa.gov.za (user information services)
distribution@statssa.gov.za (orders)

Postal address: Private Bag X44, Pretoria, 0001

Produced by Statistics South Africa and Department of Minerals and Energy