

Biblioteek



REPUBLIEK VAN SUID-AFRIKA
REPUBLIC OF SOUTH AFRICA

DIE BIBLIOTEEK / THE LIBRARY
SENTRALE STATISTIEKDIENS
CENTRAL STATISTICAL SERVICE
PRIVATE SAK / PRIVATE BAG X 44
0001 PRETORIA

**Gross Domestic Product
at constant 1990 prices -
Fourth quarter 1995**



SENTRALE
STATISTIEKDIENS
CENTRAL
STATISTICAL SERVICE

Statistical release

P0441.1

Co-operation between the Central Statistical Service and the residents of the RSA, the private sector and the government institutions is essential for a successful statistical system in the RSA. Without this continued co-operation and goodwill, the timely release of relevant and reliable official statistics will not be possible.

The CSS publishes approximately five hundred different releases per year. In the light of expenditure restraints in government, it is no longer economically viable to produce them in more than one of the eleven official languages in South Africa. Since the releases are also extensively used by the international economic and social-scientific communities, from 1996 CSS releases will be published in English.

**Embargo: 13:00
Date: 14 February 1996**

Published by the
Central Statistical Service
Private Bag X44
PRETORIA
0001
Tel. (012) 310-8911

The CSS has copyright on this information. You are, however, free to apply it as you wish provided that you acknowledge the CSS as the source of the basic data wherever you process, apply, utilise, publish or distribute the data; and also that you specify that the relevant application and analyses (where applicable) result from your own processing of the data.

CSS Library Cataloguing-in-Publication (CIP) Data

Consumer price index / Central Statistical Service
- 1996-

Pretoria: Central Statistical Service, 1996-
p. ; 30 cm. (Statistical release; P0141.1)
Series formerly available as: Statistical news
release; P0141.1 and P2
Monthly

I. Consumer price indices. I. South Africa.
Central Statistical Service. II. Title.
III. Series.

(LCSH 11)

A complete set of CSS publications is available at the **CSS Library** and the following libraries:

State Library, Pretoria
Library of Parliament, Cape Town
South African Library, Cape Town
Bloemfontein Public Library
Natal Society Library, Pietermaritzburg
Johannesburg Public Library

GROWTH IN GDP EXCEEDS 3 % IN 1995

NOTE: All growth rates in this statistical release are quarterly percentage changes which are indicated at annualised rates.

Review of annual trend

The latest estimates show that the total real GDP at market prices increased by 3,3% in 1995 despite declines in agricultural and mining production. This is the highest rate since 1988 when a rate of 4,2% was recorded. In 1989 the growth rate was still positive, albeit lower at 2,4% but during the next three years the GDP declined by 0,3%; 1,0% and 2,2% respectively. In 1993 the economy again reflected a positive growth rate namely 1,3% followed by 2,7% in 1994 and 3,3% in 1995.

The real GDP of the non-agricultural sector at factor incomes showed a significant increase of 3,8% in 1995 following increases of 0,6% and 2,0% in 1993 and 1994 respectively. The sectors that contributed most to this strong growth at factor incomes are manufacturing with an increase of 7,6% in 1995 after it had increased by only 2,5% in 1994; trade with an increase of 6,1% (3,9% in 1994) and transport with an increase of 4,7% (3,7% in 1994). The other sectors also recorded positive growth rates in 1995 except agriculture and mining which declined by 14,9% and 3,6% respectively.

Review of quarterly trend

As far as the quarterly trend is concerned the latest preliminary estimates show that in the fourth quarter of 1995, the growth rate in the total seasonally adjusted real GDP at market prices has decreased marginally to 2,7% at an annualised rate as against 3,0% in the third quarter.

The seasonally adjusted real GDP of the non-agricultural sector at factor incomes has increased by only 1,9% at an annualised rate in the fourth quarter after annualised growth rates of respectively 2,5%; 4,8% and 5,5% in the previous three quarters. This low increase in the fourth quarter can mainly be ascribed to a decline of 2,8% in manufacturing production. The other sectors all recorded positive growth rates in the fourth quarter although the growth rate of 2,5% in the mining sector was much lower than the 6,2% recorded in the third quarter.

The quarterly changes in the GDP at constant 1990 prices at seasonally adjusted annualised rates are as follows.

	1994		1995			
	3	4	1	2	3	4
	%	%	%	%	%	%
GDP at constant 1990 prices						
At market prices	4,2	6,5	1,7	2,2	3,0	2,7
At factor incomes:						
Total	4,0	6,1	1,4	1,6	2,1	1,7
Agriculture	11,4	27,8	-15,6	-42,2	-49,8	-2,4
Non-agricultural sector	3,6	5,0	2,5	4,8	5,5	1,9
Mining	0,6	0,4	-10,4	-7,5	6,2	2,5
Secondary industries	6,0	8,6	6,3	8,4	7,2	-1,5
Manufacturing	7,5	11,0	7,0	10,0	8,6	-2,8
Tertiary industries	2,7	3,6	2,7	4,8	4,4	4,0

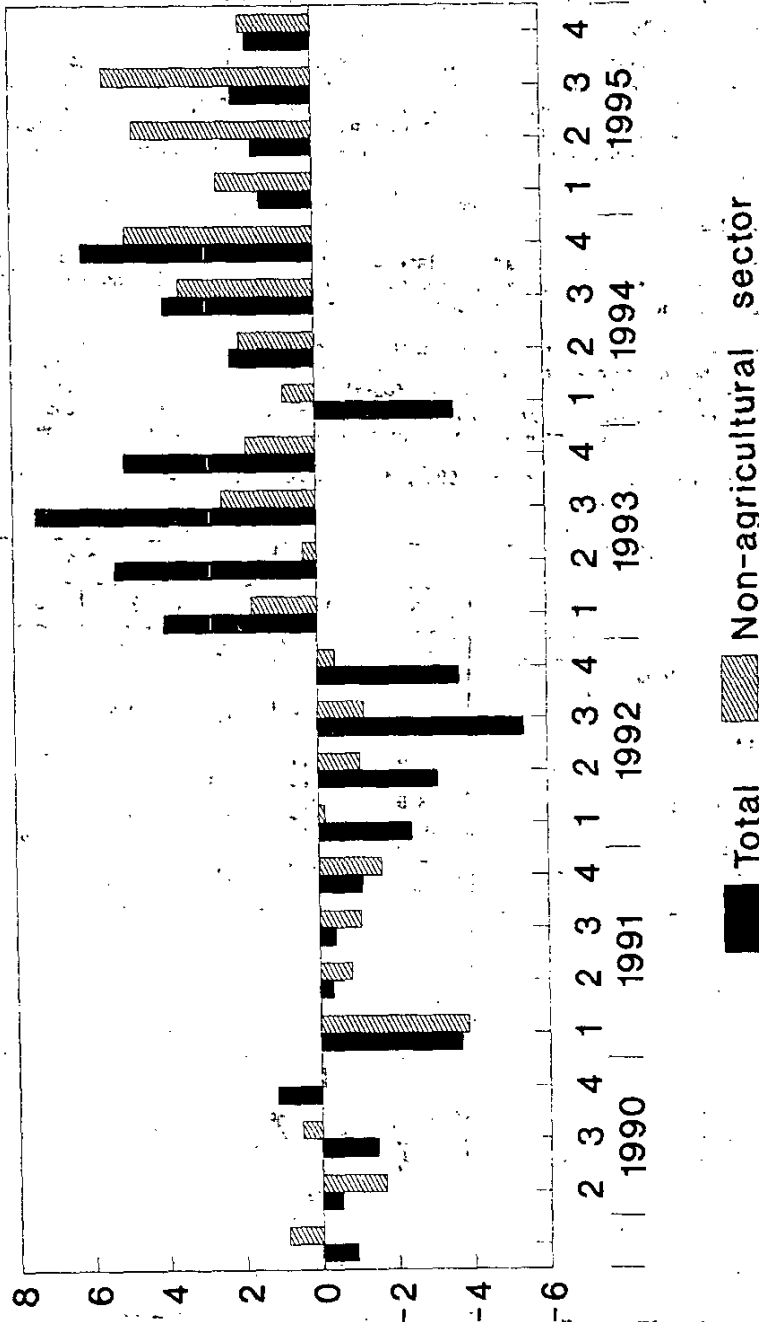
pp
HEAD: CENTRAL STATISTICAL SERVICE

ENQUIRIES:

Tel. (012) 310-8095/310-8040
(012) 310-8351/310-8390
(012) 310-8413 (technical enquiries)
Private Bag X44, Pretoria, 0001
Fax: 310-8500 310-8501

BLOEMFONTEIN (051) 447-7767	KEMPTON PARK (011) 394-3420/1	NELSPRUIT (01311) 52455/6
DURBAN (031) 305-3904	KIMBERLEY (0531) 33965	PIETERSBURG (0152) 295-7521
CAPE TOWN (021) 23-1040	KLERKSDORP (018) 462-4008	PORT ELIZABETH (041) 52-3801/2
BISHO (0401) 99-2457	UMTATA (0471) 305-2038	

Gross Domestic Product at factor incomes at constant 1990 prices. Seasonally adjusted. Quarterly % change at annual rates.



1. GROSS DOMESTIC PRODUCT
SEASONALLY ADJUSTED - SUMMARY

Year and Quarter	GDP at constant 1990 prices				GDP at current prices			
	Market prices		Factor incomes		Market prices		Factor incomes	
	R million	Change at annual rates	R million	Change at annual rates	R million	Change at annual rates	R million	Change at annual rates
1992	267 257	-2.2	238 711	-2.4	340 963	10.0	309 085	-11.1
1993	270 702	1.3	242 488	1.6	383 695	12.5	345 949	11.9
1994	278 143	2.7	248 575	2.5	431 711	12.5	385 092	11.3
1995	287 233	3.3	255 497	2.8				
1991 - 1	273 882	-3.1	244 999	-3.7	294 263	13.5	263 337	10.9
2	273 265	-0.9	244 798	-0.3	305 982	16.9	274 166	17.5
3	273 159	-0.2	244 547	-0.4	316 148	14.0	283 538	14.4
4	272 689	-0.7	243 852	-1.1	323 903	10.2	291 507	11.7
1992 - 1	270 845	-2.7	242 354	-2.4	335 494	15.1	299 595	11.6
2	269 110	-2.5	240 442	-3.1	336 049	0.7	307 767	11.4
3	265 761	-4.9	237 143	-5.4	345 054	11.2	313 798	8.1
4	263 312	-3.6	234 905	-3.7	347 255	2.6	315 180	1.8
1993 - 1	265 055	2.7	237 236	4.0	361 230	17.1	330 290	20.6
2	268 391	5.1	240 335	5.3	377 041	18.7	342 539	15.7
3	273 012	7.1	244 668	7.4	392 492	17.4	352 639	12.3
4	276 350	5.0	247 701	5.1	404 017	12.3	358 328	6.6
1994 - 1	274 351	-2.9	245 417	-3.6	408 531	4.5	366 000	8.8
2	276 031	2.5	246 772	2.2	427 102	19.5	382 498	19.3
3	278 898	4.2	249 188	4.0	440 038	12.7	392 706	11.1
4	283 292	6.5	252 923	6.1	451 173	10.5	399 164	6.7
1995 - 1	284 512*	1.7	253 805*	1.4	466 043	13.8	412 430	14.0
2	286 090*	2.2	254 805*	1.6	481 416	13.9	425 199	13.0
3	288 195*	3.0	256 143*	2.1	496 634	13.3	440 234	14.9
4	290 135	2.7	257 235	1.7				

* REVISED

2 GROSS DOMESTIC PRODUCT AT FACTOR INCOMES AT CONSTANT 1990 PRICES
2.1 NOT SEASONALLY ADJUSTED - R MILLION

Year and quarter	TOTAL	Agriculture Forestry Fishing	Mining Quarrying	Manufacturing	Electricity Gas Water	Construction	Trading	Transportation	Real estate	Community services	LESS Imputations	General government	Other producers
1992	238 711	9 921	23 909	58 209	11 074	7 693	35 689	18 316	36 532	4 639	8 101	35 373	5 457
1993	242 485	12 302	24 458	58 316	11 512	7 168	35 880	18 748	36 714	4 698	8 255	35 464	5 480
1994	248 575	13 779	23 844	59 791	11 939	7 251	37 281	19 444	37 758	4 760	8 554	35 748	5 534
1995	255 497	11 726	22 981	64 331	12 332	7 379	39 550	20 351	39 182	4 853	8 840	35 991	5 641
1991 1	59 979	3 313	5 817	14 615	2 654	2 080	8 805	4 471	8 962	1 134	1 937	8 730	1 335
2	61 241	3 618	5 848	15 056	2 767	2 068	9 015	4 504	9 086	1 143	1 962	8 749	1 349
3	61 820	3 255	5 937	15 593	2 856	2 035	9 221	4 532	9 115	1 145	1 975	8 741	1 365
4	61 509	3 452	5 909	14 919	2 738	2 020	9 506	4 468	9 214	1 145	2 009	8 762	1 381
1992 1	59 532	3 155	5 873	14 335	2 697	1 959	8 538	4 516	9 077	1 153	1 986	8 868	1 345
2	60 117	3 070	5 961	14 558	2 773	1 974	8 707	4 582	9 122	1 160	2 011	8 866	1 355
3	59 825	2 066	6 046	14 833	2 854	1 927	8 977	4 622	9 155	1 162	2 030	8 842	1 371
4	59 237	1 630	6 029	14 483	2 750	1 833	9 467	4 594	9 178	1 164	2 074	8 797	1 382
1993 1	56 374	1 980	6 028	14 212	2 730	1 789	8 530	4 600	9 113	1 166	2 020	8 896	1 350
2	60 056	3 156	6 072	14 358	2 865	1 778	8 665	4 627	9 163	1 172	2 048	8 888	1 360
3	61 532	3 203	6 162	15 001	3 009	1 797	9 067	4 731	9 208	1 177	2 061	8 864	1 374
4	62 523	3 963	6 196	14 745	2 908	1 804	9 618	4 790	9 230	1 183	2 125	8 816	1 392
1994 1	60 548	3 303	6 001	14 343	2 924	1 779	8 716	4 796	9 268	1 186	2 070	8 940	1 362
2	61 701	3 686	5 878	14 739	2 947	1 804	9 014	4 850	9 388	1 190	2 126	8 961	1 370
3	62 466	3 098	5 962	15 262	3 099	1 829	9 462	4 902	9 498	1 193	-2 144	8 916	-1 389
4	63 860	3 692	6 003	15 447	2 969	1 839	10 089	4 896	9 604	1 191	2 214	8 931	1 413
1995 1	62 231	3 176*	5 735*	15 339	3 013	1 809	9 158*	4 940*	9 608*	1 209	2 168*	9 028*	1 384
2	63 641	3 307*	5 619*	15 989	3 051	1 837	9 528*	5 073*	9 774	1 214	2 184*	9 033*	1 396
3	64 263	-2 303*	-5 777*	16 651*	3 182*	1 862	10 071*	5 158*	9 859*	1 216*	-2 205*	8 972*	1 417*
4	65 362	2 940	5 850	16 372	3 082	1 871	10 793	5 180	9 941	1 214	2 283	8 958	1 444

REVISED

2 GROSS DOMESTIC PRODUCT AT FACTOR INCOMES AT CONSTANT 1990 PRICES
2.2 SEASONALLY ADJUSTED (AT ANNUAL RATES) R MILLION

Year and quarter	TOTAL	Agriculture Forestry Fishing	Mining Quarrying	Manufacturing	Electricity, gas Water	Construction	Trading	Transportation	Finance Real estate	Community services	LESS Imputations	General government	Other producers
1991 1	244 999	13 181	23 581	61 037	10 935	8 326	36 943	18 023	36 099	4 541	7 849	34 758	5 422
2	244 796	13 457	23 452	60 667	11 036	8 146	36 843	17 963	36 255	4 562	7 881	34 868	5 428
3	244 547	13 830	23 478	59 800	11 074	8 197	36 538	17 990	36 457	4 579	7 894	35 066	5 432
4	243 852	14 084	23 533	59 228	11 013	8 141	35 864	17 924	36 697	4 602	7 908	35 236	5 438
1992 1	242 354	12 679	22 809	58 901	11 107	7 976	35 731	18 204	36 557	4 618	8 046	35 371	5 449
2	240 442	11 398	23 916	58 445	11 064	7 791	35 684	18 280	36 479	4 631	8 085	35 382	5 455
3	237 143	8 797	23 939	57 827	11 066	7 611	35 636	18 366	36 530	4 649	8 124	35 384	5 460
4	234 905	6 810	23 970	57 663	11 057	7 394	35 705	18 414	36 562	4 658	8 147	35 355	5 464
1993 1	237 236	8 170	24 309	57 968	11 240	7 251	35 701	18 521	36 661	4 677	8 184	35 454	5 468
2	240 335	11 066	24 477	57 951	11 419	7 139	35 704	18 481	36 704	4 692	8 221	35 448	5 475
3	244 668	13 992	24 446	58 640	11 613	7 137	35 949	18 778	36 730	4 706	8 278	35 472	5 485
4	247 701	15 980	24 600	58 705	11 776	7 145	36 166	19 212	36 761	4 717	8 337	35 482	5 494
1994 1	245 417	13 210	24 200	58 572	11 844	7 210	36 476	19 304	37 166	4 731	8 400	35 599	5 505
2	246 772	13 434	23 696	58 956	11 914	7 244	37 123	19 399	37 550	4 748	8 495	35 682	5 521
3	249 188	13 800	23 729	60 028	11 974	7 264	37 473	19 488	37 952	4 770	8 620	35 787	5 543
4	252 923	14 672	23 751	61 608	12 024	7 286	38 052	19 585	38 364	4 791	8 701	35 924	5 567
1995 1	253 805*	14 062*	23 111*	62 662	12 171	7 328	38 304	19 889*	38 661	4 820	8 750	35 947*	5 595
2	254 805*	12 263*	22 662*	64 179	12 290	7 361*	39 139*	20 243*	39 030*	4 844	8 808	35 977*	5 625
3	256 143*	10 321*	23 004*	65 514*	12 382*	7 398*	39 932*	20 543*	39 392*	4 866	8 870	36 006*	5 655
4	257 235	10 258	23 147	65 049	12 485	7 429	40 820	20 725	39 645	4 882	8 932	36 034	5 689

* REVISED

2 GROSS DOMESTIC PRODUCT AT FACTOR INCOMES AT CONSTANT 1990 PRICES
 2.3 PERCENTAGE CHANGE AT ANNUAL RATES FROM PRECEDING PERIOD
 SEASONALLY ADJUSTED

Year and quarter	TOTAL	Agriculture Forestry Fishing	Mining Quarrying	Manufacturing	Electricity Gas Water	Construction	Trading	Transport Communication	Finance Real Estate	Community services	LESS Imputations	General government	Other producers
1992	-2.4	-27.3	1.7	-3.3	0.5	-6.2	-2.3	1.9	0.4	1.5	2.8	1.1	0.5
1993	1.6	24.0	2.3	0.2	4.0	-6.8	0.5	2.4	0.5	1.3	1.9	0.3	0.4
1994	2.5	12.0	-2.5	2.5	3.7	1.2	-3.9	3.7	2.8	1.3	3.6	0.8	1.0
1995	2.8	-14.5	-3.6	7.6	3.3	1.8	6.1	4.7	3.8	2.0	3.3	0.7	1.9
1991 1	-3.7	-0.2	-7.0	-11.3	1.7	-7.2	-4.9	-3.5	3.3	2.0	3.5	5.4	0.5
1991 2	-0.3	8.6	-2.2	-2.4	3.8	-8.5	-1.1	-1.3	1.7	1.9	1.6	1.3	0.4
1991 3	-0.4	11.6	0.4	-5.6	1.3	2.5	-3.3	0.6	2.2	1.5	0.7	2.3	0.3
1991 4	-1.1	7.6	0.9	-3.8	-2.2	-2.7	-7.2	-1.5	2.7	2.0	0.7	2.0	0.4
1992 1	-2.4	-34.3	4.8	-2.2	3.8	-7.9	-1.5	6.4	-1.5	1.4	7.3	1.5	0.8
1992 2	-3.1	-34.7	1.8	-3.1	3.5	-9.0	-0.5	1.7	-0.9	1.1	1.9	0.1	0.4
1992 3	-5.4	-64.5	0.4	-4.2	0.1	-8.9	-0.5	1.9	0.6	1.6	1.9	0.0	0.4
1992 4	-3.7	-64.1	0.5	-1.1	-0.4	-10.9	0.8	1.0	0.4	-0.8	1.1	-0.3	0.3
1993 1	4.0	107.2	-5.8	2.1	6.8	-7.5	0.0	2.3	1.1	1.6	1.8	1.1	0.3
1993 2	5.3	236.6	2.8	-0.1	6.5	-6.0	0.0	-0.9	0.5	1.3	1.8	-0.1	0.5
1993 3	7.4	155.6	-0.5	4.8	7.0	-0.1	2.8	6.6	0.3	1.2	2.8	0.3	0.6
1993 4	5.1	70.1	2.5	0.4	5.7	0.4	2.4	9.6	0.3	0.9	2.9	0.1	0.8
1994 1	-3.6	-53.3	-6.3	-0.9	2.3	3.7	3.5	1.9	4.5	1.2	3.1	1.3	0.8
1994 2	2.2	7.0	-8.1	2.6	2.4	1.9	7.3	2.0	4.2	1.4	4.6	0.9	1.2
1994 3	4.0	11.4	0.6	7.5	2.0	1.1	-3.8	1.8	4.4	1.9	6.0	1.2	1.6
1994 4	6.1	27.8	0.4	-11.0	1.7	1.2	6.3	2.0	4.4	1.8	3.8	1.5	1.7
1995 1	1.4*	-15.6*	-10.4*	7.0	5.0	2.3	2.7	6.4*	3.1	2.4	2.3	0.3*	2.0
1995 2	1.6*	-42.2*	-7.5*	10.0	4.0	1.8*	9.0*	7.3*	3.9	2.0	2.7	-0.3*	2.2
1995 3	2.1*	-49.8*	6.2*	8.6*	3.0*	2.0*	8.4*	6.1*	3.8*	1.8	2.8	0.3*	2.2
1995 4	1.7*	-2.4	2.5	-2.8*	3.4	1.7	9.2	3.7	2.6	1.3	2.8	0.3	2.4

* REVISED

2 GROSS DOMESTIC PRODUCT AT FACTOR INCOMES AT CONSTANT 1990 PRICES
2.4 PERCENTAGE CHANGE AGAINST THE SAME QUARTER A YEAR AGO
SEASONALLY ADJUSTED

Year and quarter	TOTAL	Agriculture Forestry Fishing	Mining Quarrying	Manufacturing	Electricity Gas Water	Construction	Trading	Transport Communication	Finance Real estate	Community services	LESS Imputations	General Government	Other producers
1991	-1.1	4.5	-2.2	-4.6	2.0	-4.7	-1.8	-2.2	1.5	1.4	1.5	2.3	0.6
1992	-2.4	-27.5	1.7	-3.3	0.5	-6.2	-2.3	1.9	0.4	1.5	2.8	1.1	0.5
1993	1.6	24.0	2.3	0.2	4.0	-6.8	0.5	2.4	0.5	1.3	1.9	0.3	0.4
1994	2.5	12.0	-2.5	2.5	3.7	1.2	3.9	3.7	2.8	1.3	3.6	0.8	1.0
1995	2.8	-14.5	-3.6	7.6	3.3	1.8	6.1	4.7	3.8	2.0	3.5	0.7	1.9
1991 1	-1.1	1.6	-2.4	-3.9	1.3	-4.0	0.2	-3.1	0.1	1.1	1.2	2.0	0.7
1991 2	-1.1	-1.3	-1.7	-3.6	2.8	-5.9	-0.6	-2.4	1.5	1.4	1.5	2.0	0.7
1991 3	-0.8	11.3	-2.8	-4.7	2.6	-4.7	-2.3	-1.8	2.0	1.4	1.5	2.3	0.6
1991 4	-1.4	6.8	-2.0	-5.8	1.1	-4.0	-4.1	-1.4	2.5	1.8	1.6	2.7	0.4
1992 1	-1.1	-3.8	1.0	-3.5	1.6	-4.2	-3.3	1.0	1.3	1.7	2.5	1.8	0.5
1992 2	-1.8	-15.3	2.0	-3.7	0.2	-4.4	-3.1	1.8	0.6	1.5	2.6	1.5	0.5
1992 3	-3.0	-36.4	2.0	-3.3	-0.1	-7.1	-2.5	2.1	0.2	1.5	2.9	0.9	0.5
1992 4	-3.7	-51.6	1.9	-2.6	0.4	-9.2	-0.4	2.7	-0.4	1.2	3.0	0.3	0.5
1993 1	-2.1	-35.6	2.1	-1.6	1.2	-9.1	-0.1	1.7	0.3	1.3	1.7	0.2	0.3
1993 2	0.0	-2.9	2.3	-0.8	3.2	-8.4	0.1	1.1	0.6	1.3	1.7	0.2	0.4
1993 3	3.2	59.1	2.1	1.4	4.9	-6.2	0.9	2.2	0.5	1.2	1.9	0.2	0.2
1993 4	5.4	134.7	2.6	1.8	6.5	-3.4	1.3	4.3	0.5	1.3	2.2	0.4	0.5
1994 1	3.4	61.7	-0.4	1.0	5.4	-0.6	2.2	4.2	1.4	1.2	2.6	0.4	0.7
1994 2	2.7	21.4	-3.2	1.7	4.3	1.5	4.0	5.0	2.3	1.2	3.3	0.7	0.8
1994 3	1.8	-1.4	-2.9	2.4	3.1	1.8	4.2	3.8	3.3	1.4	4.1	0.9	1.1
1994 4	2.1	-8.2	-3.5	4.9	2.1	2.0	5.2	1.9	4.4	1.6	4.4	1.2	1.5
1995 1	3.4	6.4*	-4.5*	7.0	2.8	1.6	5.0	3.0*	4.0	1.9	4.2	1.0	1.6
1995 2	3.3*	-8.7*	-4.4*	8.9	3.2	1.6	5.4*	4.4*	3.9	2.0	3.7	0.8*	1.9
1995 3	2.8	-25.2*	-3.1*	9.1*	3.4*	1.8	6.6*	5.4*	3.8*	2.0	2.9	0.6*	2.0
1995 4	1.7	-30.1	-2.5	5.6	3.8	2.0	7.3	5.8	3.3	1.9	2.7	0.3	2.2

* REVISED

