

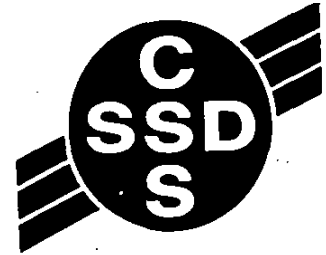
3

DIE BIBLIOTEEK / THE LIBRARY  
SENTRALE STATISTIEKDIENS  
CENTRAL STATISTICAL SERVICE  
PRIVAATSAK / PRIVATE BAG X44  
0001 PRETORIA



REPUBLIC OF SOUTH AFRICA

**Gross domestic product at  
constant 1990 prices and at  
current prices  
Third quarter 1997**



**CENTRAL  
STATISTICAL SERVICE**

**Statistical release P0441**

*Co-operation between the Central Statistical Service and the residents of the RSA, the private sector and the government institutions is essential for a successful statistical system in the RSA. Without this continued co-operation and goodwill, the timely release of relevant and reliable official statistics will not be possible.*

*The CSS publishes approximately five hundred different releases per year. In the light of expenditure restraints in government, it is no longer economically viable to produce them in more than one of the eleven official languages in South Africa. Since the releases are also extensively used by the international economic and social-scientific communities, from 1996 CSS releases will be published in English.*

**Embargo: 11:00**

**Date: 25 November 1997**

Published by the  
Central Statistical Service  
Private Bag X44  
PRETORIA  
0001  
Tel. (012) 310-8911

0001 PRETORIA  
PRIVATE BAG X44  
CENTRAL STATISTICAL SERVICE  
SENTRALE STATISTIEKDIENST  
DIE BIBLIOTEK VAN DIE LIBRARY

8

The CSS has copyright on this information. You are, however, free to apply it as you wish provided that you acknowledge the CSS as the source of the basic data wherever you process, apply, utilise, publish or distribute the data; and also that you specify that the relevant application and analyses (where applicable) result from your own processing of the data.

## CONTENTS

<b>Key findings</b>	1
<b>Explanations and Definitions</b>	2
<b>Graphs</b>	
Gross Domestic Product at factor incomes at constant 1990 prices. Seasonally adjusted. Quarterly % change at annual rates.	3
<b>Tables</b>	
1. Gross Domestic Product - Seasonally adjusted - Summary	4
2. Gross Domestic Product at factor incomes at constant 1990 prices	
2.1 Not seasonally adjusted R million	5
2.2 Seasonally adjusted (at annual rates) R million	6
2.3 Percentage change at annual rates from preceding period - seasonally adjusted	7
2.4 Percentage change against the same quarter a year ago - seasonally adjusted	8
2.5 Percentage change at annual rates - seasonally adjusted	9
3. Gross Domestic Prices at factor incomes at current prices	
3.1 Not seasonally adjusted - R million	
3.1.1 Total	10
3.1.2 Remuneration of employees	11
3.1.3 Gross Operating Surplus	12
3.2 Seasonally adjusted (at annual rates) - R million	
3.2.1 Total	13
3.2.2 Remuneration of employees	14
3.2.3 Gross Operating Surplus	15

A complete set of CSS publications is available at the CSS Library and the following libraries:

State Library, Pretoria  
South African Library, Cape Town  
Natal Society Library, Pietermaritzburg

Library of Parliament, Cape Town  
Bloemfontein Public Library  
Johannesburg Public Library

**YEAR-ON-YEAR GROWTH IN THE REAL GDP AT MARKET PRICES FOR THE FIRST NINE MONTHS NEARLY 2,0%**

Despite divergent annualised quarterly growth rates in the total seasonally adjusted real GDP at market prices, changing from a decline of 0,7% in the first quarter of 1997 to positive growth rates of 2,4% and 0,3% in the second and third quarters respectively, the real GDP for the first nine months of 1997 nevertheless increased by 1,8% compared with the corresponding period in 1996.

According to the latest economic indicators the low economic growth rate of 0,3% in the third quarter, was the result of a widespread downswing in the real output of most of the economic sectors, especially in that of the secondary industries i.e. manufacturing, electricity, gas and water, and construction. Following an annualised growth rate of 5,4% in both the first and second quarters, the seasonally adjusted real GDP of the secondary industries declined by an annualised growth rate of 0,5% in the third quarter of 1997. This is mainly due to a drop of 1,0% (annualised rate) in manufacturing production.

The tertiary industries (i.e. trade and catering, transport, finance, community and other services) also recorded a lower annualised growth rate in the third quarter, namely 0,1% (as against 1,4% in the second quarter). This lower growth rate of 0,1% is mainly due to a decrease of 1,3% (annualised rate) in respect of the trade and catering sector.

Overall, eight of the twelve sectors still recorded positive growth rates in the third quarter, albeit mostly at lower rates than in the second quarter.

**Note**

Table 2.5 replaces a part of the table that was always given on this page and which contained growth rates for the non-agricultural sector and for the secondary and tertiary industries separately. Growth rates at market prices and at factor incomes are shown in table 1.



pp  
Dr F M Orkin  
Head: Central Statistical Service

**ENQUIRIES:**

Tel. (012) 310-8095/310-8040  
(012) 310-8351/310-8390  
(012) 310-8413 (technical enquiries)  
Private Bag X44, Pretoria, 0001  
Fax: 310-8500  
E-mail: info @ css.pwv.gov.za  
Internet: <http://www.css.gov.za>

## EXPLANATIONS AND DEFINITIONS

### Scope

The estimates cover the Republic of South Africa including the former TBVC States:

### Gross domestic product at factor incomes

The gross domestic product at factor incomes is equal to the remuneration received by the production factors i.e. the wages, interest and depreciation, rent and profit earned by labour, capital, land and entrepreneurship respectively, for their participation in the domestic production. The production of the various industries are valued at factor incomes only.

### Gross domestic product at market prices

The gross domestic product at market prices is equal to the gross domestic product at factor incomes plus total indirect taxes paid (such as VAT, excise duty, import duty, etc.) minus total subsidies received (e.g. payments from government to businesses).

### Remuneration of employees

Gross salaries and wages; remuneration in kind (food, housing, etc.); employers' contributions to staff funds and to social security funds, and remuneration to managing and working directors.

### Gross operating surplus (Other income)

Operating surplus of businesses before deduction of net interest paid, depreciation allowances and income tax.

### General government

All producers of general government services. These comprise public administration and defence, as well as education, medical services, etc. In many cases no direct payments are made for these services by users.

### Other producers

Non-profit institutions serving households (universities, trade unions, etc.) as well as domestic workers (staff in the service of households).

### Revision of estimates

Apart from the usual revision of the estimates for the latest quarters, the estimates for all components of the national accounts are usually investigated and revised every five years in conjunction with the rebasing of the estimates at constant prices. At such a time the results of censuses that have become available in the meantime are incorporated in the estimates.

### Timing of publication

Since the beginning of 1996 the CSS publishes its GDP estimates for a given quarter after sixty days, and not, as before, within forty-five days. This allows the CSS to incorporate information from the first two months of the given quarter; and also to issue current price estimates at the same time.

### Primary industries

The primary industries include the sectors agriculture and mining.

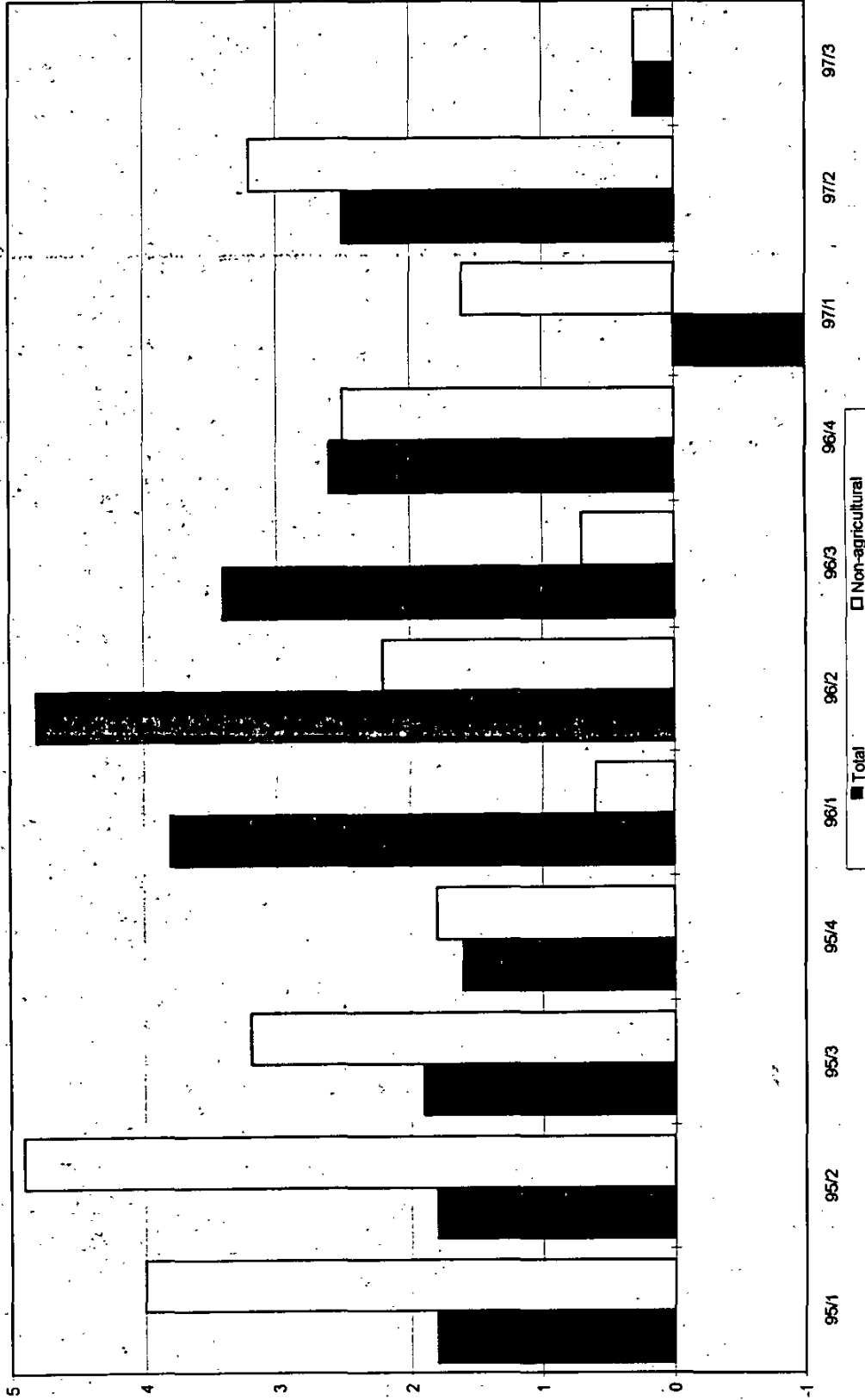
### Secondary industries

The secondary industries include the sectors manufacturing, electricity, gas and water and construction.

### Tertiary industries

The tertiary industries include the sectors trade and catering, transport and communication, finance and real estate, community services, general government, other producers and imputed financial services (imputations).

Gross Domestic Product at factor incomes at constant 1990 prices. Seasonally adjusted. Quarterly % change at annual rates.



1. GROSS DOMESTIC PRODUCT  
SEASONALLY ADJUSTED - SUMMARY

Year and Quarter	GDP at constant 1990 prices				GDP at current prices			
	Market prices		Factor incomes		Market prices		Factor incomes	
	R million	Change at annual rates %	R million	Change at annual rates %	R million	Change at annual rates %	R million	Change at annual rates %
1993	270 702	1.3	242 485	1.6	382 199*	11.8*	345 949	11.9
1994	278 143	2.7	248 575	2.5	431 088*	12.8*	385 092	11.3
1995	287 506	3.4	255 770	2.9	484 614*	12.4*	430 872	11.9
1996	296 827*	3.2*	263 694*	3.1*	542 741*	12.0*	484 057*	12.3*
1993 - 1	265 055	2.7	237 236	4.0	357 047*	9.1*	330 290	20.6
1993 - 2	268 391	5.1	240 335	5.3	377 209*	24.6*	342 539	15.7
1993 - 3	273 012	7.1	244 668	7.4	392 978*	17.8*	352 639	12.3
1993 - 4	276 350	5.0	247 701	5.1	401 562*	9.0*	358 328	6.6
1994 - 1	274 351	-2.9	245 417	-3.6	408 490*	7.1*	366 000	8.8
1994 - 2	276 031	2.5	246 772	2.2	426 209*	18.5*	382 498	19.3
1994 - 3	278 898	4.2	249 188	4.0	440 984*	14.6*	392 706	11.1
1994 - 4	283 292	6.5	252 923	6.1	448 669*	7.2*	399 164	6.7
1995 - 1	284 782	2.1	254 075	1.8	464 406*	14.8*	412 915	14.5
1995 - 2	286 483	2.4	255 198	1.8	478 171*	12.4*	426 283	13.6
1995 - 3	288 452	2.8	256 400	1.9	497 087*	16.8*	438 533	12.0
1995 - 4	290 307	2.6	257 407	1.6	498 792*	1.4*	445 757	6.0
1996 - 1	292 894*	3.6*	259 834*	3.8*	517 005*	15.4*	462 247*	15.6*
1996 - 2	295 878*	4.1*	262 926*	4.8*	539 701*	18.8*	481 340*	17.6*
1996 - 3	298 252*	3.2*	265 152*	3.4*	555 718*	12.4*	491 304*	8.5*
1996 - 4	300 284*	2.8*	266 864*	2.6*	558 540*	2.0*	501 337*	8.4*
1997 - 1	299 734*	-0.7*	266 201*	-1.0*	571 095*	9.3*	508 865*	6.1*
1997 - 2	301 496*	2.4*	267 833*	2.5*	592 386*	15.8*	527 463*	15.4*
1997 - 3	301 753	0.3	268 034	0.3	611 255	13.4	537 613	7.9

\* REVISED

2 GROSS DOMESTIC PRODUCT AT FACTOR INCOMES AT CONSTANT  
1990-PRICES  
2.1 NOT SEASONALLY ADJUSTED - R MILLION

Year and quarter	TOTAL	Agriculture Forestry Fishing	Mining Quarrying	Manu- fac- turing	Electri- city Gas Water	Con- struc- tion	Trade Cate- ring	Trans- port Communi- cation	Finance Real estate	Commu- nity services	LESS Imputa- tions	General govern- ment	Other pro- ducers
1993	242 485	12 302	24 458	58 316	11 512	7 168	35 880	18 748	36 714	4 698	8 255	35 464	5 480
1994	248 575	13 779	23 844	59 791	11 939	7 251	37 281	19 444	37 758	4 760	8 554	35 748	5 534
1995	255 770	11 726	23 094	64 351	12 332	7 376	39 687	20 459	39 100	4 853	8 840	35 991	5 641
1996	263 694*	15 133*	22 773	64 581	12 942	7 506	41 167	21 109	40 406	4 948	9 189	36 551	5 767
1993 1	58 374	1 980	6 028	14 212	2 730	1 789	8 530	4 600	9 113	1 166	2 020	8 896	1 350
1993 2	60 056	3 156	6 072	14 358	2 865	1 778	8 665	4 627	9 163	1 172	2 048	8 888	1 360
1993 3	61 532	3 203	6 162	15 001	3 009	1 797	9 067	4 731	9 208	1 177	2 061	8 864	1 374
1993 4	62 523	3 963	6 196	14 745	2 908	1 804	9 618	4 790	9 230	1 183	2 126	8 816	1 396
1994 1	60 548	3 303	6 001	14 343	2 924	1 779	8 716	4 796	9 268	1 186	2 070	8 940	1 362
1994 2	61 701	3 686	5 878	14 739	2 947	1 804	9 014	4 850	9 388	1 190	2 126	8 961	1 370
1994 3	62 466	3 098	5 962	15 262	3 099	1 829	9 462	4 902	9 498	1 193	2 144	8 916	1 389
1994 4	63 860	3 692	6 003	15 447	2 969	1 839	10 089	4 896	9 604	1 191	2 214	8 931	1 413
1995 1	62 309	3 026	5 758	15 504	3 013	1 809	9 189	4 969	9 588	1 209	2 168	9 028	1 384
1995 2	63 699	3 157	5 645	16 139	3 055	1 836	9 560	5 094	9 754	1 214	2 184	9 033	1 396
1995 3	64 340	2 453	5 809	16 501	3 182	1 861	10 107	5 188	9 839	1 216	2 205	8 972	1 417
1995 4	65 422	3 090	5 882	16 207	3 082	1 870	10 831	5 208	9 919	1 214	2 283	8 958	1 444
1996 1	63 873*	3 007*	5 765	15 726	3 136	1 843	9 721	5 226	9 915	1 233	2 237	9 124*	1 414
1996 2	65 563*	3 957*	5 650	16 026	3 186	1 871	10 036	5 235	10 062	1 236	2 267	9 141*	1 430
1996 3	66 622*	3 880*	5 652	16 407	3 355	1 893	10 399	5 323	10 156	1 239	2 293	9 160*	1 451
1996 4	67 636*	4 289*	5 706	16 422	3 265	1 899	11 011	5 325	10 273	1 240	2 392	9 126*	1 472
1997 1	65 302*	3 404*	5 627	16 200*	3 253*	1 870	9 860*	5 350	10 215	1 256	2 326	9 147*	1 446
1997 2	66 732*	3 745*	5 728*	16 616*	3 425*	1 892	10 108*	5 393*	10 356	1 259*	2 346	9 098*	1 458
1997 3	67 364	3 742	5 785	16 764	3 452	1 918	10 376	5 422	10 483	1 265	2 359	9 046	1 470

\* REVISED

2 GROSS DOMESTIC PRODUCT AT FACTOR INCOMES AT CONSTANT  
1990-PRICES  
2.2 SEASONALLY ADJUSTED (AT ANNUAL RATES) R MILLION

Year and quarter	TOTAL	Agriculture Forestry Fishing	Mining Quarrying	Manu- fac- turing	Electri- city Gas Water	Con- struc- tion	Trade Cate- goring	Trans- port Communi- cation	Finance Real estate	Communi- ty services	LESS Imputa- tions	General govern- ment	Other pro- ducers
1993 1	237 236	8 170	24 309	57 968	11 240	7 251	35 701	18 521	36 661	4 677	8 184	35 454	5 468
2	240 335	11 066	24 477	57 951	11 419	7 139	35 704	18 481	36 704	4 692	8 221	35 448	5 475
3	244 668	13 992	24 446	58 640	11 613	7 137	35 949	18 778	36 730	4 706	8 278	35 472	5 483
4	247 701	15 980	24 600	58 705	11 776	7 145	36 166	19 212	36 761	4 717	8 337	35 482	5 494
1994 1	245 417	13 210	24 200	58 572	11 844	7 210	36 476	19 304	37 166	4 731	8 400	35 599	5 505
2	246 772	13 434	23 696	58 956	11 914	7 244	37 123	19 399	37 550	4 748	8 495	35 682	5 521
3	249 188	13 800	23 729	60 028	11 974	7 264	37 473	19 488	37 952	4 770	8 620	35 787	5 543
4	252 923	14 672	23 751	61 608	12 024	7 286	38 052	19 585	38 364	4 791	8 701	35 924	5 567
1995 1	254 075	13 462	23 176	63 362	12 171	7 328	38 441	19 942	38 581	4 820	8 750	35 947	5 595
2	255 198	11 663	22 886	64 779	12 290	7 360	39 275	20 358	38 949	4 844	8 808	35 977	5 625
3	256 400	10 921	23 094	64 914	12 372	7 390	40 070	20 673	39 309	4 866	8 870	36 006	5 655
4	257 407	10 858	23 220	64 349	12 495	7 426	40 962	20 863	39 561	4 882	8 932	36 034	5 689
1996 1	259 834*	12 897*	23 199	64 221	12 686	7 467	40 691	20 924	39 880	4 914	9 024	36 255	5 724
2	262 926*	14 614*	22 905	64 685	12 838	7 499	41 238	21 019	40 197	4 936	9 150	36 390	5 755
3	265 152*	16 428*	22 466	64 536	13 044	7 518	41 229	21 183	40 583	4 960	9 235	36 656	5 784
4	266 864*	16 593*	22 522	64 882	13 200	7 540	41 510	21 310	40 964	4 982	9 347	36 903	5 805
1997 1	266 201*	14 930*	22 547*	65 866*	13 330*	7 568	41 293*	21 343	41 150	5 007	9 397	36 730*	5 834
2	267 833*	14 586*	22 885*	66 786*	13 533*	7 590	41 502*	21 565*	41 369	5 031	9 457	36 578*	5 865
3	268 034	14 575	23 158	66 622	13 550	7 628	41 363	21 690	41 485	5 057	9 510	36 518	5 898

\* REVISED



2 GROSS DOMESTIC PRODUCT AT FACTOR INCOMES AT CONSTANT  
1990-PRICES  
2.3 PERCENTAGE CHANGE AT ANNUAL RATES  
FROM PRECEDING PERIOD - SEASONALLY ADJUSTED

Year and quarter	TOTAL	Agriculture Forestry Fishing	Mining Quarrying	Manu- fac- turing	Electri- city Gas Water	Con- struc- tion	Trade Cate- ring	Trans- port Communi- cation	Finance Real estate	Communi- ty services	LESS imputa- tions	General govern- ment	Other pro- ducers
1993	1.6	24.0	2.3	0.2	4.0	-6.8	0.5	2.4	0.5	1.3	1.9	0.3	0.4
1994	2.5	12.0	-2.5	2.5	3.7	1.2	3.9	3.7	2.8	1.3	3.6	0.8	1.0
1995	2.9	-14.9	-3.1	7.6	3.3	1.7	6.5	5.2	3.6	2.0	3.3	0.7	1.9
1996	3.1*	29.1*	-1.4	0.4	4.9	1.8	3.7	3.2	3.3	2.0	3.9	1.6	2.2
1993 1	4.0	107.2	5.8	2.1	6.8	-7.5	0.0	2.3	1.1	1.6	1.8	1.1	0.3
2	5.3	236.6	2.8	-0.1	6.5	-6.0	0.0	-0.9	0.5	1.3	1.8	-0.1	0.5
3	7.4	155.6	-0.5	4.8	7.0	-0.1	2.8	6.6	0.3	1.2	2.8	0.3	0.6
4	5.1	70.1	2.5	0.4	5.7	0.4	2.4	9.6	0.3	0.9	2.9	0.1	0.8
1994 1	-3.6	-53.3	-6.3	-0.9	2.3	3.7	3.5	1.9	4.5	1.2	3.1	1.3	0.8
2	2.2	7.0	-8.1	2.6	2.4	1.9	7.3	2.0	4.2	1.4	4.6	0.9	1.2
3	4.0	11.4	0.6	7.5	2.0	1.1	3.8	1.8	4.4	1.9	-6.0	1.2	1.6
4	6.1	27.8	0.4	11.0	1.7	1.2	6.3	2.0	4.4	1.8	3.8	1.5	1.7
1995 1	-1.8	-29.1	-9.3	11.9	5.0	2.3	4.2	7.5	2.3	2.4	2.3	0.3	2.0
2	1.8	-43.7	-4.9	-9.3	4.0	1.8	9.0	8.6	3.9	2.0	2.7	0.3	2.2
3	1.9	-23.1	3.7	0.8	2.7	1.6	8.3	6.3	3.7	1.8	2.8	0.3	2.2
4	1.6	-2.3	2.2	-3.4	4.0	2.0	9.2	3.7	2.6	1.3	2.8	0.3	2.4
1996 1	3.8*	99.0*	-0.4	-0.8	6.3	2.2	-2.6	1.2	3.3	2.6	4.2	2.5	2.5
2	4.8*	64.9*	-5.0	2.9	4.9	1.7	5.5	1.8	3.2	1.8	5.7	1.5	2.2
3	3.4*	59.7*	-7.4	-0.9	6.6	1.0	-0.1	3.2	3.9	2.0	3.8	3.0	2.0
4	2.6*	4.1*	1.0	2.2	4.9	1.2	2.8	2.4	3.8	1.8	4.9	2.7	1.5
1997 1	-1.0*	-34.5*	0.4	6.2*	4.0*	1.5	-2.1*	0.6	1.8	2.0	2.2	-1.9*	2.0
2	2.5*	-8.9*	6.1*	5.7*	6.2*	1.2	2.0*	4.2*	2.1	1.9	2.6	-1.6*	2.1
3	0.3	-0.3	4.9	-1.0	0.5	2.0	-1.3	2.3	1.1	2.1	2.3	-0.7	2.3

\* REVISED

2 GROSS DOMESTIC PRODUCT AT FACTOR INCOMES AT CONSTANT  
1990-PRICES  
2.4 PERCENTAGE CHANGE COMPARED WITH THE SAME QUARTER  
A YEAR AGO - SEASONALLY ADJUSTED

Year and quarter	TOTAL	Agriculture Forestry Fishing	Mining Quarrying	Manufacturing	Electricity Gas Water	Construction	Trade Catering	Transport Communication	Finance Real estate	Community services	LESS Imputations	General government	Other producers
1993 1	1.6	24.0	2.3	0.2	4.0	-6.8	0.5	2.4	0.5	1.3	1.9	0.3	0.4
1993 2	2.5	12.0	-2.5	2.5	3.7	1.2	3.9	3.7	2.8	1.3	3.6	0.8	1.0
1993 3	2.9	-14.9	-3.1	7.6	3.3	1.7	6.5	5.2	3.6	2.0	3.3	0.7	1.9
1993 4	3.1*	29.1*	-1.4	0.4	4.9	1.8	3.7*	3.2	3.3	2.0	3.9	1.6	2.2
1993 1	-2.1	-35.6	2.1	-1.6	1.2	-9.1	-0.1	1.7	0.3	1.3	1.7	0.2	0.3
1993 2	0.0	-2.9	2.3	-0.8	3.2	-8.4	0.1	1.1	0.6	1.3	1.7	0.2	0.4
1993 3	3.2	59.1	2.1	1.4	4.9	-6.2	0.9	2.2	0.5	1.2	1.9	0.2	0.4
1993 4	5.4	134.7	2.6	1.8	6.5	-3.4	1.3	4.3	0.5	1.3	2.3	0.4	0.5
1994 1	3.4	61.7	-0.4	1.0	5.4	-0.6	2.2	4.2	1.4	1.2	2.6	0.4	0.7
1994 2	2.7	21.4	-3.2	1.7	4.3	1.5	4.0	5.0	2.3	1.2	3.3	0.7	0.8
1994 3	1.8	-1.4	-2.9	2.4	3.1	1.8	4.2	3.8	3.3	1.4	4.1	0.9	1.1
1994 4	2.1	-8.2	-3.5	4.9	2.1	2.0	5.2	1.9	4.4	1.6	4.4	1.2	1.3
1995 1	3.5	1.9	-4.2	8.2	2.8	1.6	5.4	3.3	3.8	1.9	4.2	1.0	1.6
1995 2	3.4	-13.2	-3.4	9.9	3.2	1.6	5.8	4.9	3.7	2.0	3.7	0.8	1.9
1995 3	2.9	-20.9	-2.7	8.1	3.3	1.7	6.9	6.1	3.6	2.0	2.9	0.6	2.0
1995 4	1.8	-26.0	-2.2	4.4	3.9	1.9	7.6	6.5	3.1	1.9	2.7	0.3	2.2
1996 1	2.3*	-4.2*	0.1	1.4	4.2	1.9	5.9	4.9	3.4	2.0	3.1	0.9	2.3
1996 2	3.0*	25.3*	0.1	-0.1	4.5	1.9	5.0	3.2	3.2	1.9	3.9	1.1	2.3
1996 3	3.4*	50.4*	-2.7	-0.6	5.4	1.7	2.9	2.5	3.2	1.9	4.1	1.8	2.3
1996 4	3.7*	52.6*	-3.0	0.8	5.6	1.5	1.3	2.1	3.5	2.0	4.6	2.4	2.0
1997 1	2.5*	15.8*	-2.8*	2.6*	5.1*	1.4	1.5*	2.0	3.2	1.9	4.1	1.3*	1.9
1997 2	1.9*	-0.2*	-0.1*	3.2*	5.4*	1.2	0.6	2.6	2.9	1.9	3.4	0.5*	1.9
1997 3	1.1	-11.3	3.1	3.2	3.9	1.5	0.3	2.4	2.2	2.0	3.0	-0.4	2.0

\* REVISED

2 GROSS DOMESTIC PRODUCT AT FACTOR INCOMES AT CONSTANT  
1990-PRICES  
2.5 PERCENTAGE CHANGE AT ANNUAL RATES - SEASONALLY ADJUSTED

Year and quarter	Compared with previous year or quarter					Compared with previous year or same quarter a year ago				
	TOTAL %	Non-agri-cultural industries %	Primary industries %	Secondary industries %	Tertiary industries %	TOTAL %	Non-agri-cultural industries %	Primary industries %	Secondary industries %	Tertiary industries %
1993	1.6	0.6	8.7	0.0	0.6	1.6	0.6	8.7	0.0	0.6
1994	2.5	2.0	2.3	2.6	2.5	2.5	2.0	2.3	2.6	2.5
1995	2.9	3.9	-7.5	6.4	3.7	2.9	3.9	-7.5	6.4	3.7
1996	3.1*	1.9	8.9*	1.2	2.8	3.1*	1.9	8.9*	1.2	2.8
1993 1	4.0	1.7	24.0	1.8	0.9	-2.1	-0.3	-11.0	-2.0	0.3
1993 2	5.3	0.4	43.4	0.3	0.0	0.0	0.1	0.6	-1.0	0.4
1993 3	7.4	2.5	36.8	4.7	1.7	3.2	1.0	17.4	1.2	0.7
1993 4	5.1	1.8	24.2	1.2	2.0	5.4	1.6	31.8	2.0	1.2
1994 1	-3.6	0.8	-27.8	0.0	2.8	3.4	1.4	15.2	1.5	1.6
1994 2	2.2	2.0	3.0	2.5	3.6	2.7	1.8	4.5	2.1	2.5
1994 3	4.0	3.6	4.4	6.0	2.7	1.8	2.0	-2.4	2.4	2.8
1994 4	6.1	5.0	9.9	8.6	3.6	2.1	2.8	-5.3	4.2	3.2
1995 1	1.8	4.0	-17.3	10.0	3.0	3.5	3.6	-2.1	6.7	3.2
1995 2	1.8	4.9	-20.9	7.8	5.0	3.4	4.4	-7.0	8.1	3.6
1995 3	1.9	3.2	-6.0	1.2	4.4	2.9	4.3	-9.4	6.8	4.0
1995 4	1.6	1.8	0.7	-1.9	4.0	1.8	3.5	-11.3	4.1	4.1
1996 1	3.8*	0.6	25.9*	0.5	0.9	2.3	2.6	-1.5*	1.8	3.6
1996 2	4.8*	2.2	16.7*	3.1	3.0	3.0	2.0	8.6*	0.7	3.1
1996 3	3.4*	0.7	15.5*	0.4	2.2	3.4	1.3	14.3*	0.5	2.5
1996 4	2.6*	2.5	2.3*	2.5	2.8	3.7	1.5	14.8*	1.6	2.2
1997 1	-1.0*	1.6*	-15.7*	5.4*	-0.5*	2.5*	1.8	3.8*	2.8*	1.9*
1997 2	2.5*	3.2	-0.1*	5.4*	1.4*	1.9*	2.0	-0.1*	3.4*	1.5*
1997 3	0.3	0.3	2.8	-0.5	0.1	1.1	1.9	-3.0	3.2	0.9

\* REVISED

3 GROSS DOMESTIC PRODUCT AT FACTOR INCOMES AT CURRENT PRICES  
 3.1 NOT SEASONALLY ADJUSTED - R MILLION  
 3.1.1 TOTAL

Year and quarter	TOTAL	Agriculture Forestry Fishing	Mining Quarrying	Manufacturing	Electricity Gas Water	Construction	Trade Catering	Transport Communication	Finance Real estate	Community services	LESS Imputations	General government	Other producers
1993	345 949	15 586	30 505	81 167	13 969	11 249	55 699	26 780	56 595	6 857	12 744	53 043	7 243
1994	385 092	19 802	33 172	90 177	15 506	12 281	61 450	29 030	63 473	7 573	14 559	59 233	7 954
1995	430 872	18 779	33 742	104 600	17 029	13 509	70 189	33 321	73 214	8 479	16 452	65 463	8 999
1996	484 057*	23 458*	39 122	114 916	19 135*	14 315	77 752	37 154	84 152	9 436	18 781	73 449	9 949
1993 1	79 902	2 319	7 315	19 258	3 433	2 642	12 433	6 379	13 522	1 598	3 068	12 342	1 729
2	85 163	5 226	7 539	19 000	3 497	2 663	12 957	6 703	13 979	1 741	3 104	13 152	1 810
3	87 875	4 178	7 773	20 218	3 539	2 803	14 171	6 711	14 175	1 806	3 012	13 678	1 835
4	93 009	3 863	7 878	22 691	3 500	3 141	16 138	6 987	14 919	1 712	3 560	13 871	1 869
1994 1	89 129	3 433	8 290	21 243	3 744	2 869	13 676	6 956	15 233	1 765	3 450	13 464	1 906
2	95 568	6 765	8 439	21 019	3 888	2 919	14 240	7 349	15 686	1 920	3 525	14 877	1 991
3	97 858	5 323	8 361	22 575	3 969	3 073	15 642	7 277	15 931	1 989	3 430	15 138	2 010
4	102 537	4 281	8 082	25 340	3 905	3 420	17 892	7 448	16 623	1 899	4 154	15 754	2 047
1995 1	100 518	4 200	8 613	24 312	4 185	3 144	15 415	7 904	17 457	1 966	3 936	15 113	2 145
2	105 963	5 687	8 474	24 593	4 227	3 218	16 424	8 467	18 209	2 154	4 011	16 270	2 251
3	109 378	4 881	8 474	26 267	4 339	3 401	17 909	8 373	18 419	2 232	3 906	16 705	2 284
4	115 013	4 011	8 181	29 428	4 278	3 746	20 441	8 577	19 129	2 127	4 599	17 375	2 319
1996 1	112 360*	4 666*	9 617	27 087	4 634*	3 375	17 297	8 787	19 903	2 186	4 435	16 878	2 365
2	120 083*	7 923*	9 822	27 009	4 795*	3 418	18 176	9 432	21 060	2 396	4 651	18 218	2 485
3	122 462*	6 054*	9 867	28 624	4 895*	3 567	19 706	9 342	21 203	2 487	4 592	18 782	2 527
4	129 152*	4 815*	9 816	32 196	4 811*	3 955	22 573	9 593	21 986	2 367	5 103	19 571	2 572
1997 1	123 663*	4 871*	10 206	29 834*	5 056*	3 573	19 037	9 674	22 437	2 417	4 973*	18 909	2 622
2	131 573*	7 977*	10 313	29 844*	5 260*	3 622	19 980	10 400	23 791	2 655	5 241*	20 218	2 754
3	134 022	6 047	10 461	31 384	5 372	3 827	21 512	10 353	23 963	2 747	5 188	20 754	2 790

\* REVISED

3. GROSS DOMESTIC PRODUCT AT FACTOR INCOME AT CURRENT PRICES  
 3.1 NOT SEASONALLY ADJUSTED - R MILLION  
 3.1.2 REMUNERATION OF EMPLOYEES

Year and quarter	TOTAL	Agriculture Forestry Fishing	Mining Quarrying	Manu- facturing	Electri- city Gas Water	Con- struc- tion	Trade Cate- goring	Trans- port Communi- cation	Finance Real estate	Commu- nity services	LESS Imputa- tions	General govern- ment	Other pro- ducers
1993	210 555	3 821	15 294	45 314	3 998	8 954	36 061	15 333	20 191	3 589	0	50 966	7 044
1994	231 630	4 158	16 460	50 180	4 258*	9 745	39 299	16 374	22 494	3 972	0	56 957	7 733
1995	258 345	4 533	18 207	55 825	4 822	10 611	43 833	19 001	25 386	4 428	0	62 948	8 751
1996	285 089*	4 966	20 142	60 230	5 568*	11 111	48 077	21 138	28 595	4 904	0	70 685	9 673
1993 1	49 507	889	3 828	10 656	981	2 093	8 462	3 607	4 639	831	0	11 841	1 680
2	50 802	986	3 830	10 374	996	2 129	8 482	3 773	4 932	902	0	12 637	1 761
3	52 986	1 049	3 871	11 108	1 001	2 220	8 847	3 874	5 141	939	0	13 151	1 785
4	57 270	897	3 765	13 176	1 020	2 512	10 270	4 079	5 479	917	0	13 337	1 818
1994 1	54 193	966	4 105	11 793	1 075	2 272	9 205	3 913	5 172	925	0	12 916	1 851
2	56 179	1 067	4 157	11 478	1 068	2 333	9 283	4 071	5 479	992	0	14 315	1 936
3	58 171	1 151	4 189	12 340	1 047	2 428	9 607	4 142	5 721	1 036	0	14 555	1 955
4	63 087	974	4 009	14 569	1 068	2 712	11 204	4 248	6 122	1 019	0	15 171	1 991
1995 1	60 677	1 046	4 530	13 225	1 213	2 461	10 284	4 478	5 819	1 030	0	14 508	2 083
2	62 775	1 162	4 588	12 906	1 213	2 548	10 438	4 721	6 252	1 108	0	15 650	2 189
3	64 805	1 265	4 644	13 646	1 187	2 665	10 673	4 815	6 468	1 158	0	16 062	2 222
4	70 088	1 060	4 445	16 048	1 209	2 937	12 438	4 987	6 847	1 132	0	16 728	2 257
1996 1	66 712*	1 132	4 978	14 227	1 387*	2 613	11 258	4 951	6 520	1 138	0	16 212	2 296
2	69 218*	1 265	5 055	13 909	1 401*	2 676	11 425	5 238	7 072	1 225	0	17 536	2 416
3	71 622*	1 397	5 157	14 735	1 379*	2 760	11 716	5 376	7 282	1 285	0	18 077	2 458
4	77 537*	1 172	4 952	17 359	1 401*	3 062	13 678	5 573	7 721	1 256	0	18 860	2 503
1997 1	73 494*	1 243	5 477	15 364	1 527*	2 744	12 392	5 436	7 314	1 261	0	18 190	2 546
2	76 068*	1 391	5 560	14 992	1 549*	2 814	12 542	5 746	7 956	1 359	0	19 482	2 677
3	78 604	1 527	5 698	15 839	1 519	2 939	12 842	5 924	8 185	1 425	0	19 993	2 713

\* REVISED

3. GROSS DOMESTIC PRODUCT AT FACTOR INCOME AT CURRENT PRICES  
 3.1 NOT SEASONALLY ADJUSTED - R MILLION  
 3.1.3 GROSS OPERATING SURPLUS

Year and quarter	TOTAL	Agriculture Forestry Fishing	Mining Quarrying	Manu- fac- turing	Electri- city Gas Water	Con- struc- tion	Trade Cate- ring	Trans- port Communi- cation	Finance Real estate	Commu- nity services	LESS Imputa- tions	General govern- ment	Other pro- ducers
1993	135 384	11 765	15 211	35 853	9 971	2 295	19 638	11 447	36 404	3 268	12 744	2 077	199
1994	153 462	15 644	16 712	39 997	11 248	2 536	22 151	12 656	40 979	3 601	14 559	2 276	221
1995	172 527	14 246	15 535	48 775	12 207	2 898	26 356	14 320	47 828	4 051	16 452	2 515	248
1996	198 968*	18 492*	18 980*	54 686	13 567	3 204	29 675	16 016	55 557	4 532	18 781	2 764	276
1993 1	30 395	1 430	3 487	8 602	2 452	549	3 971	2 772	8 883	767	3 068	501	49
1993 2	34 361	4 240	3 709	8 626	2 501	534	4 475	2 930	9 047	839	3 104	515	49
1993 3	34 889	3 129	3 902	9 110	2 538	583	5 324	2 837	9 034	867	3 012	527	50
1993 4	35 739	2 966	4 113	9 515	2 480	629	5 868	2 908	9 440	795	3 560	534	51
1994 1	34 936	2 467	4 185	9 450	2 669	597	4 471	3 043	10 061	840	3 450	548	55
1994 2	39 389	5 698	4 282	9 541	2 820	586	4 957	3 278	10 207	928	3 525	562	55
1994 3	39 687	4 172	4 172	10 235	2 922	645	6 035	3 135	10 210	953	3 430	583	55
1994 4	39 450	3 307	4 073	10 771	2 837	708	6 688	3 200	10 501	880	4 154	583	56
1995 1	39 841	3 154	4 083	11 087	2 972	683	5 131	3 426	11 638	936	3 936	605	62
1995 2	43 188	4 525	3 886	11 687	3 014	670	5 986	3 746	11 957	1 046	4 011	620	62
1995 3	44 573	3 616	3 830	12 621	3 152	736	7 236	3 558	11 951	1 074	3 906	643	62
1995 4	44 925	2 951	3 736	13 380	3 069	809	8 003	3 590	12 282	995	4 599	647	62
1996 1	45 648*	3 534*	4 639	12 860	3 247	762	6 039	3 836	13 383	1 048	4 435	666	69
1996 2	50 865*	6 658*	4 767	13 100	3 394	742	6 751	4 194	13 988	1 171	4 651	682	69
1996 3	50 840*	4 657*	4 710	13 889	3 516	807	7 990	3 966	13 921	1 202	4 592	705	69
1996 4	51 615*	3 643*	4 864	14 837	3 410	893	8 895	4 020	14 265	1 111	5 103	711	69
1997 1	50 169*	3 628*	4 729	14 470*	3 529*	829	6 645	4 238	15 123	1 156	4 973*	719	76
1997 2	55 505*	6 586*	4 753	14 852*	3 711	808	7 438	4 654	15 835	1 296	5 241*	736	77
1997 3	55 418	4 520	4 763	15 545	3 853	888	8 670	4 429	15 778	1 322	5 188	761	77

\* REVISED

3. GROSS DOMESTIC PRODUCT AT FACTOR INCOMES AT CURRENT PRICES  
 3.2. SEASONALLY ADJUSTED (AT ANNUAL RATES) - R MILLION  
 3.2.1 TOTAL

Year and quarter	TOTAL	Agriculture Forestry Fishing	Mining Quarrying	Manu- fac- turing	Electri- city Gas Water	Con- struc- tion	Trade Cate- ring	Trans- port Communi- cation	Finance Real estate	Communi- ty services	LESS Imputa- tions	General govern- ment	Other pro- ducers
1993 1	330 290	13 049	28 673	78 698	13 470	10 939	53 693	25 985	53 952	6 611	12 572	50 842	6 950
2	342 539	16 013	29 818	80 095	13 849	11 155	54 858	26 470	55 873	6 770	12 291	52 789	7 140
3	352 639	16 265	31 015	81 844	14 167	11 312	56 459	26 921	57 576	6 943	11 861	54 637	7 361
4	358 328	17 017	32 514	84 031	14 390	11 590	57 786	27 744	58 979	7 104	14 252	53 904	7 521
1994 1	366 000	16 363	32 519	86 463	14 695	11 879	58 933	28 233	60 800	7 300	14 206	55 359	7 662
2	382 498	20 100	33 400	88 551	15 400	12 225	60 292	28 860	62 600	7 472	13 930	59 670	7 858
3	392 706	20 857	33 308	91 546	15 871	12 404	62 434	29 166	64 415	7 656	13 500	60 485	8 064
4	399 164	21 888	33 461	94 148	16 058	12 616	64 141	29 861	66 077	7 864	16 600	61 418	8 232
1995 1	412 915	19 818	33 800	98 817	16 458	13 018	66 511	32 112	69 708	8 133	16 209	62 125	8 624
2	426 283	17 079	33 569	103 446	16 741	13 474	69 420	33 272	72 668	8 384	15 857	65 190	8 897
3	438 533	18 802	33 728	106 491	17 353	13 725	71 467	33 519	74 431	8 597	15 703	66 951	9 172
4	445 757	19 417	33 871	109 646	17 564	13 819	73 358	34 381	76 049	8 802	18 039	67 586	9 303
1996 1	462 247*	22 485*	37 798	110 128	18 227*	13 978	74 780	35 734	79 475	9 049	18 276	69 354	9 515
2	481 340*	23 666*	39 260	113 507	19 008*	14 306	76 810	37 040	83 909	9 337	18 396	73 065	9 828
3	491 304*	23 819*	39 317	115 955	19 583*	14 388	78 571	37 390	85 750	9 568	18 451	75 274	10 140
4	501 337*	23 862*	40 113	120 074	19 722*	14 588	80 847	38 452	87 474	9 790	20 001	76 103	10 313
1997 1	508 865*	23 726*	40 124	121 321*	19 955*	14 793	82 320	39 406	89 721	10 014	20 531*	77 455*	10 561
2	527 463*	23 706*	41 246	124 957*	20 833*	15 158	84 401	40 936*	94 905*	10 330	20 759*	80 873*	10 877
3	537 613	23 702	41 672	127 450	21 474	15 447	85 724	41 435	96 732	10 566	20 904	83 127	11 188

\* REVISED

3. GROSS DOMESTIC PRODUCT AT FACTOR INCOMES AT CURRENT PRICES  
 3.2 SEASONALLY ADJUSTED (AT ANNUAL RATES) - R MILLION  
 3.2.2 REMUNERATION OF EMPLOYEES

Year and quarter	TOTAL	Agricul- ture Forestry Fishing	Mining Quarry- ing	Manu- fac- turing	Electri- city Gas Water	Con- struc- tion	Trade Cate- ring	Trans- port Communi- cation	Finance Real estate	Commu- nity services	LESS Imputa- tions	General govern- ment	Other pro- ducers
1993 1	202 798	3 717	14 881	43 603	3 788	8 693	34 884	14 846	19 350	3 451	0	48 823	6 762
2	208 130	3 882	15 095	44 676	3 955	8 868	35 369	15 136	19 947	3 544	0	50 714	6 944
3	213 921	3 793	15 417	45 833	4 097	9 001	36 551	15 372	20 515	3 633	0	52 550	7 159
4	217 411	3 892	15 783	47 144	4 152	9 254	37 440	15 978	20 952	3 728	0	51 777	7 311
1994 1	221 839	4 033	15 950	48 182	4 152	9 443	37 964	16 101	21 550	3 835	0	53 168	7 451
2	230 091	4 199	16 394	49 399	4 242	9 709	38 663	16 335	22 203	3 899	0	57 408	7 640
3	234 997	4 167	16 640	50 991	4 287	9 833	39 841	16 404	22 811	4 008	0	58 175	7 840
4	239 593	4 223	16 856	52 148	4 351	9 995	40 728	16 656	23 412	4 146	0	59 077	8 001
1995 1	248 302	4 381	17 618	53 941	4 695	10 230	42 396	18 412	24 269	4 264	0	59 708	8 388
2	257 029	4 572	18 117	55 496	4 812	10 601	43 461	18 962	25 311	4 355	0	62 690	8 652
3	262 036	4 582	18 448	56 420	4 858	10 787	44 306	19 050	25 783	4 484	0	64 398	8 920
4	266 013	4 597	18 645	57 443	4 923	10 826	45 169	19 580	26 181	4 609	0	64 996	9 044
1996 1	273 095*	4 730	19 365	58 064	5 373*	10 864	46 425	20 390	27 222	4 716	0	66 694	9 252
2	283 305*	4 975	19 938	59 827	5 568*	11 126	47 595	21 020	28 564	4 822	0	70 315	9 555
3	289 494*	5 070	20 485	60 875	5 643*	11 167	48 616	21 270	29 065	4 970	0	72 473	9 860
4	294 462*	5 089	20 780	62 154	5 688*	11 287	49 672	21 872	29 529	5 108	0	73 258	10 025
1997 1	300 635*	5 195	21 321	62 658	5 916*	11 405	51 090	22 394	30 570	5 232	0	74 584*	10 270
2	310 912*	5 468	21 931	64 412	6 144*	11 700	52 249	23 079	32 122	5 332	0	77 901*	10 574
3	317 697	5 544	22 656	65 515	6 215	11 899	53 302	23 463	32 629	5 506	0	80 095	10 873

\* REVISED



3. GROSS DOMESTIC PRODUCT AT FACTOR INCOMES AT CURRENT PRICES  
 3.2 SEASONALLY ADJUSTED (AT ANNUAL RATES) - R MILLION  
 3.2.3 GROSS OPERATING SURPLUS

Year and quarter	TOTAL	Agriculture Forestry Fishing	Mining Quarrying	Manu- fac- turing	Electri- city Gas Water	Con- struc- tion	Trade Cate- ring	Trans- port Communi- cation	Finance Real estate	Commu- nity services	LESS Imputa- tions	General govern- ment	Other pro- ducers
1993 1	127 492	9 332	13 792	35 095	9 682	2 246	18 809	11 139	34 602	3 160	12 572	2 019	188
2	134 409	12 131	14 723	35 419	9 894	2 287	19 489	11 334	35 926	3 226	12 291	2 075	196
3	138 718	12 472	15 598	36 011	10 070	2 311	19 908	11 549	37 061	3 310	11 861	2 087	202
4	140 917	13 125	16 731	36 887	10 238	2 336	20 346	11 766	38 027	3 376	14 252	2 127	210
1994 1	144 161	12 320	16 569	38 281	10 543	2 436	20 969	12 132	39 250	3 465	14 206	2 191	211
2	152 407	15 901	17 006	39 152	11 158	2 516	21 629	12 525	40 397	3 573	13 930	2 262	218
3	157 709	16 690	16 668	40 555	11 584	2 571	22 593	12 762	41 604	3 648	13 500	2 310	224
4	159 571	17 665	16 605	42 000	11 707	2 621	23 413	13 205	42 665	3 718	16 600	2 341	231
1995 1	164 613	15 437	16 182	44 876	11 763	2 788	24 115	13 700	45 439	3 869	16 609	2 417	236
2	169 254	12 507	15 452	47 950	11 929	2 873	25 959	14 310	47 357	4 029	15 657	2 500	245
3	176 497	14 220	15 280	50 071	12 495	2 938	27 161	14 469	48 648	4 113	15 703	2 553	252
4	179 744	14 820	15 226	52 203	12 641	2 993	28 189	14 801	49 868	4 193	18 639	2 590	259
1996 1	189 152*	17 755*	18 433	52 064	12 854	3 114	28 355	15 344	52 253	4 333	18 276	2 660	263
2	198 035*	18 691*	19 322	53 680	13 440	3 180	29 215	16 020	55 345	4 515	18 396	2 750	273
3	201 810*	18 749*	18 832	55 080	13 940	3 221	29 955	16 120	56 685	4 598	18 451	2 801	280
4	206 875*	18 773*	19 333	57 920	14 034	3 301	31 175	16 580	57 945	4 682	20 001	2 845	288
1997 1	208 230*	18 531*	18 803	58 663*	14 039	3 388	31 230	17 012	59 151	4 782	20 531*	2 871	291
2	216 551*	18 238*	19 315	60 545*	14 689	3 458	32 152	17 857*	62 783	4 998	20 759*	2 972	303
3	219 916	18 158	19 016	61 935	15 259	3 548	32 422	17 972	64 103	5 060	20 904	3 032	315

\* REVISED