



**Statistics
South Africa**

Preferred supplier of quality statistics



Statistical release

P0351

Tourism and Migration

September 2006

**Embargoed until:
19 December 2006
13:00**

Enquiries:

User Information Services
Tel.: (012) 310 8600 / 4892 / 8390

Forthcoming issue:

October 2006

Expected release date

February 2007

Statistics South Africa • Mbalom-balo ya Afrika Tshipembe • Tihlayo-tiko ta Afrika-Dzonga • Dipalopalo tsa Aforika Borwa • Ezezibalo zaseNingizimu Afrika
Dipalopalo tša Afrika Borwa • Dipalopalo tsa Afrika Borwa • Ubalo lwaseMzantsi Afrika • Telubalo eNingizimu Afrika • iNanimbalo leSewula Afrika • Statistiek Suid-Afrika

Contents

	Page
Key findings	
1. Foreign travellers	2
2. Ports of entry and modes of travel used by overseas and mainland Africa travellers	2
2.1 Overseas travellers	2
2.2 Mainland Africa travellers	2
3. Purpose of visit	3
4. Leading source countries of overseas and mainland Africa travellers	3
5. Historical trends in travel	3
6. South African residents	3
Graphics	4-7
Tables	
1. Travellers	
1.1 Arrivals and departures of foreign travellers	
1.1.1 Purpose of visit	8
1.1.2 Mode of travel	8
1.2 Foreign travellers	
1.2.1 Arrivals by country of residence and mode of travel	9
1.2.2 Arrivals by country of residence and purpose of visit	12
Explanatory notes	
1. Sources of data	15
2. Glossary of terms	15
3. Symbols and abbreviations used	15
General information	16

Note: The information on the total number of arrivals and departures of South African citizens and permanent residents is collected from the scanning of passports. However, data on country of final destination and purpose of visit will be available when the Department of Home Affairs re-introduces the completion of departure forms by South African citizens and permanent residents at the three international airports (OR Tambo, Cape Town and Durban).

The release provides information on travellers. Due to unavailability of data from suppliers, information on documented immigrants is not included in this release. The September 2006 documented immigration information will be provided as soon as it is made available to Stats SA.

It is important to note that travellers include (a) same day visitors and tourists and (b) other travellers such as migrant workers from other countries paid in South Africa.

KEY FINDINGS

1. Foreign travellers

The total number of foreign travellers who visited South Africa from mainland Africa, overseas and unspecified countries, arriving through all ports of entry during September 2006 was 699 282. The September 2006 figure represents an increase of 11,3% when compared with the September 2005 figure of 628 398 (see Table 1.1.1). The number of foreign travellers who departed from South Africa in September 2006 was 621 562, which increased by 12,0% from 554 843 recorded in September 2005.

During September 2006, the most common mode of travel used by foreign travellers arriving in South Africa was road, involving 500 379 (71,6%) of total travellers, followed by air, involving 186 530 (26,7%) travellers (see Table 1.1.2). Of the total number of foreign travellers arriving by air, 150 875 (80,9%) arrived through OR Tambo International Airport while 34 096 (18,3%) arrived through Cape Town International Airport, 513 (0,3%) arrived through Durban International Airport and the rest, 1 046 (0,5%), arrived through other airports (see Table 1.1.2). Those arriving by rail, sea and unspecified modes of travel were 12 373 (1,7%).

Among the total number of foreign travellers departing from South Africa, road was the most common mode of travel (454 002 representing 73,0%), followed by air (166 512 representing 26,8%). Of the total number of foreign travellers departing by air, 135 621 (81,5%) departed from OR Tambo International Airport, 29 462 (17,7%) departed from Cape Town International Airport, 384 (0,2%) used Durban International Airport and the rest, 1 045 (0,6%), departed through other airports (see Table 1.1.2). Those departing by rail, sea and unspecified modes of travel were 1 048 (0,2%). Figures 1a and 1b show the breakdown of air arrivals and departures of foreign travellers, respectively, according to the airport used. It is observed that the distribution of air arrivals by port of entry and air departures by port of exit are almost the same.

2. Ports of entry and modes of travel used by overseas and mainland Africa travellers

2.1 Overseas travellers

Table 1.2.1 shows that during September 2006, 173 348 overseas travellers visited South Africa. This represents a 11,2% increase in the volume of overseas travellers as compared to September 2005 when there were 155 909 overseas travellers.

It is further observed that in September 2006, there were 149 320 air arrivals from overseas, which accounts for 86,1% of all overseas arrivals. Of these overseas air arrivals, 115 836 (77,6%) arrived through OR Tambo International Airport; 32 417 (21,7%) arrived through Cape Town International Airport; 388 (0,3%) arrived through Durban International Airport and the rest, 679 (0,4%), arrived through other airports.

The number of overseas travellers arriving by road during September 2006 was 22 877 (13,2%). The number of those arriving by rail, sea and unspecified mode of travel was 1 151 (0,7%). (An excel spreadsheet on the mode of travel for all countries of origin is available on request).

2.2 Mainland Africa travellers

Table 1.2.1 further shows that the total number of travellers who arrived in South Africa from mainland Africa during September 2006 was 522 694, as compared to the September 2005 figure of 469 721, representing an increase of 11,3%. Of these travellers from mainland Africa, the number arriving by road was 476 636 (91,2%).

In September 2006, there were 36 319 (6,9%) air travellers arriving from mainland Africa. Of these air arrivals, 34 221 (94,2%) arrived through OR Tambo International Airport, 1 618 (4,5%) arrived through Cape Town International Airport, 119 (0,3%) arrived through Durban International Airport while the rest, 361 (1,0%), arrived through other airports. The number of travellers from mainland Africa arriving by rail, sea and unspecified mode of travel was 9 739, which constituted 1,9% of all travellers from Mainland Africa.

3. Purpose of visit

Overseas travellers: Of the 173 348 overseas travellers visiting South Africa during September 2006, 155 907 (89,9%) stated that they were in South Africa for holidays while 8 518 (4,9%) stated that they were on business trips (see Table 1.2.2). Overseas travellers arriving for the purpose of work were 6 492 (3,7%), those on transit were 937 (0,5%), those visiting for the purpose of study were 1 182 (0,7%) and those with border traffic concession were 282 (0,2%). (An excel spreadsheet on the purpose of visit for all countries of origin is available on request.)

Mainland Africa travellers: Of the 522 694 travellers from mainland Africa visiting South Africa during September 2006, the majority 490 882 (93,9%) stated that they were in South Africa for holidays while 9 118 (1,7%) stated that they were on business trips. A further breakdown of travellers from mainland Africa is as follows: those visiting for the purpose of study were 6 862 (1,3%), those arriving for the purpose of work were 2 706 (0,5%), those with border traffic concession were 9 617 (1,8%) and travellers on transit were 3 201 (0,6%), as shown in Table 1.2.2.

4. Leading source countries of overseas and mainland Africa travellers

Overseas travellers: Figure 2a indicates that during September 2006, the number of travellers from the UK visiting South Africa was 35 050 (20,2%), making it the leading country of origin of overseas travellers. This was followed by travellers from Germany, 22 587 (13,0%) and the USA, 21 435 (12,4%). Other main countries of origin of overseas travellers were: the Netherlands, 11 824 (6,8%); Australia, 9 497 (5,5%); France, 7 126 (4,1%); Italy, 4 423 (2,6%) and India, 4 371 (2,5%). Upon comparing the figures of September 2006 with those of September 2005 (see Figure 2b), the highest increase in the number of arrivals from these leading source countries was for India, (43,0% increase from 3 057 in 2005 to 4 371 in 2006).

Travellers from mainland Africa: During September 2006, the top eight countries (Figure 3a) in mainland Africa from which travellers arriving in South Africa came were: Lesotho, 142 909 (27,3%); Swaziland, 89 724 (17,2%); Zimbabwe, 84 663 (16,2%); Mozambique, 79 556 (15,2%); Botswana, 67 618 (12,9%); Namibia, 17 023 (3,3%); Zambia, 12 785 (2,4%) and Malawi, 10 687 (2,0%). When comparing arrival figures from the leading source countries from mainland Africa, (see Figure 3b) for September 2005 and September 2006, the highest increase in the number of travellers was from Zimbabwe, (30,1% increase from 65 085 in 2005 to 84 663 in 2006).

5. Historical trends in travel

It should be borne in mind that there is often a substantial month-to-month variation in travelling figures, and one needs to look at a longer period of several months to be able to detect any trends and patterns. The trend regarding the number of overseas travellers arriving in South Africa since 2002 is shown in Figure 4. Although the figure shows evidence of seasonal fluctuations, the level of overseas travel over the period has shown an upward trend since 2002.

6. South African residents

During September 2006, the most common mode of travel used by South African residents arriving in South Africa was road, involving 214 930 (58,7%) travellers, followed by air, 149 807 (40,9%) and those arriving by rail, sea and unspecified modes of travel, 1 488 (0,4%). The most common mode of travel for South African residents departing was road, involving 230 780 (59,6%) travellers, followed by air, 156 018 (40,3%) and those departing by rail, sea and unspecified modes of travel, 335 (0,1%) as shown in Table 1.1.2.

PJ Lehohla
Statistician-General

Fig 1a: Foreign air arrivals by port of entry, South Africa, September 2006

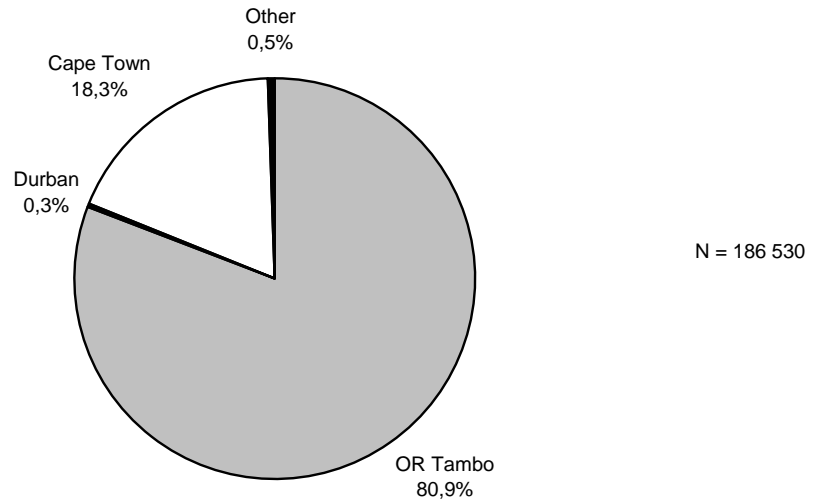


Fig 1b: Foreign air departures by port of exit, South Africa, September 2006

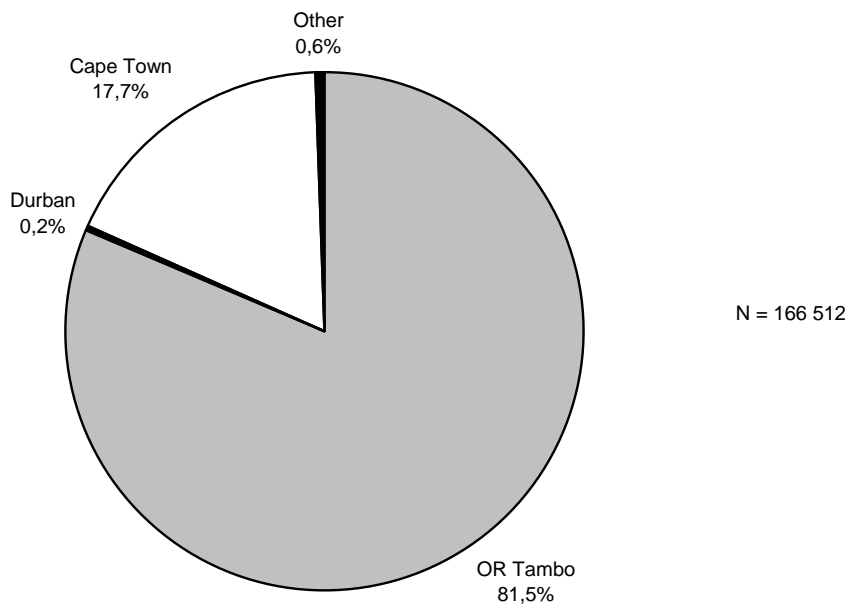


Fig. 2a: The number of overseas travellers arriving from leading source countries in September 2005 and September 2006

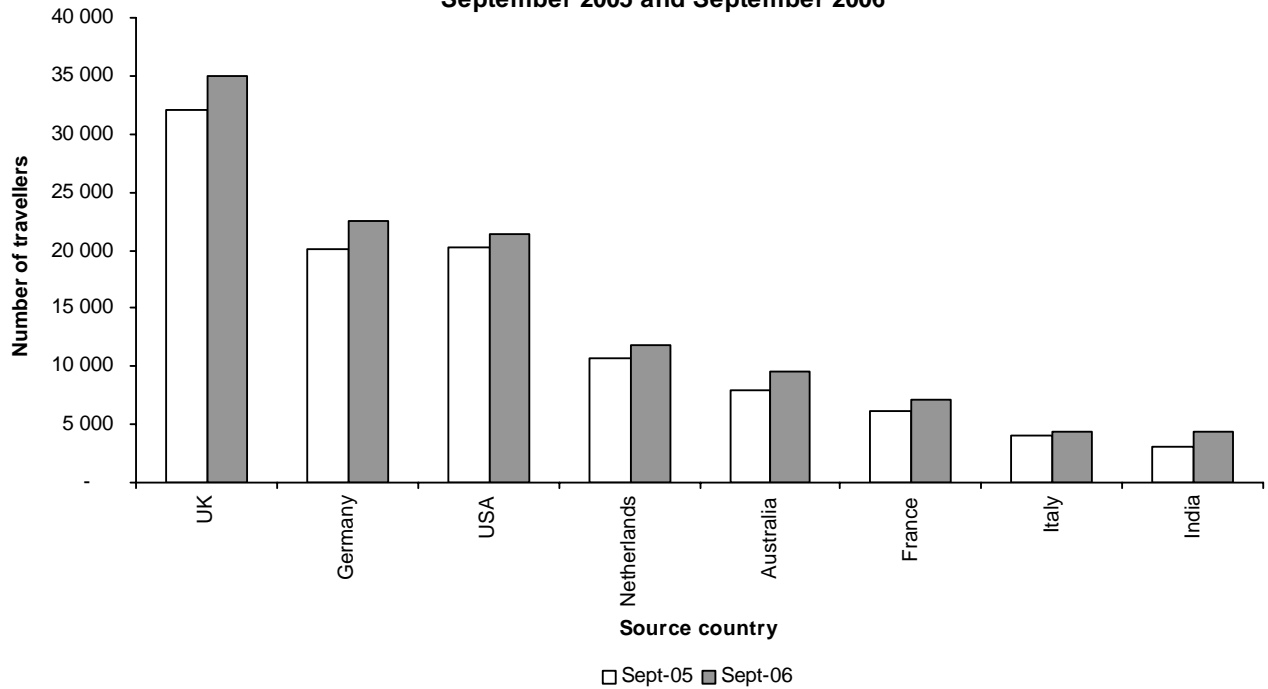


Fig. 2b: Percentage change in number of overseas travellers arriving from leading source countries in September 2006 compared with September 2005

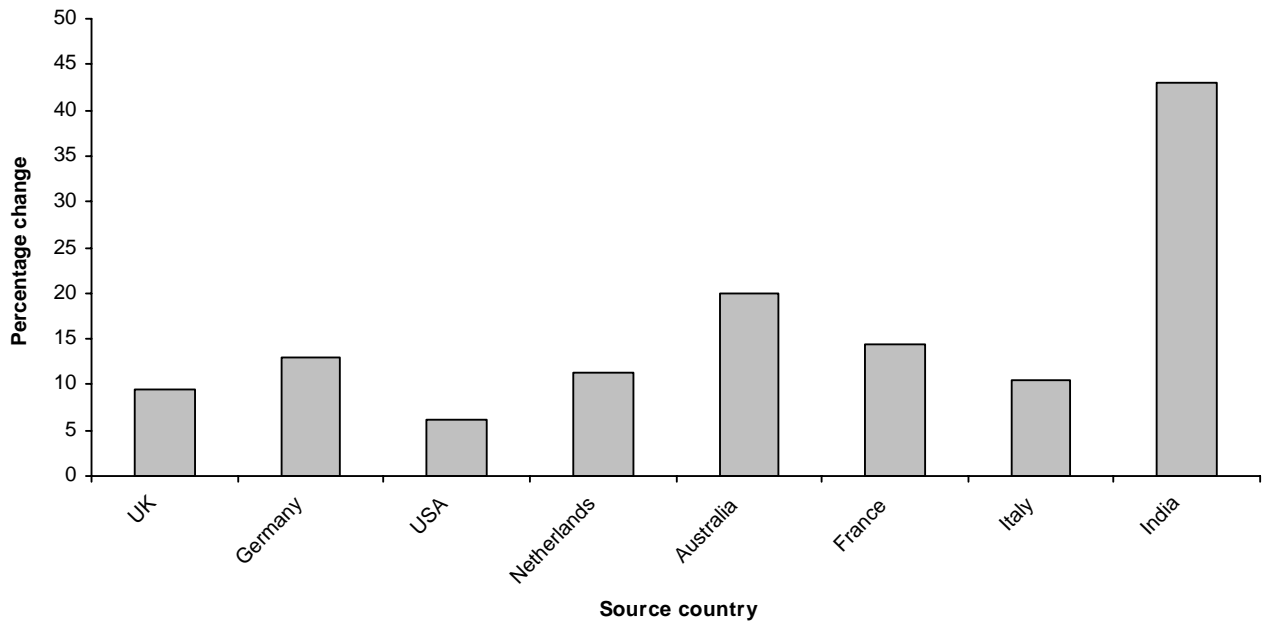


Fig. 3a: The number of travellers from mainland African countries arriving from leading source countries in September 2005 and September 2006

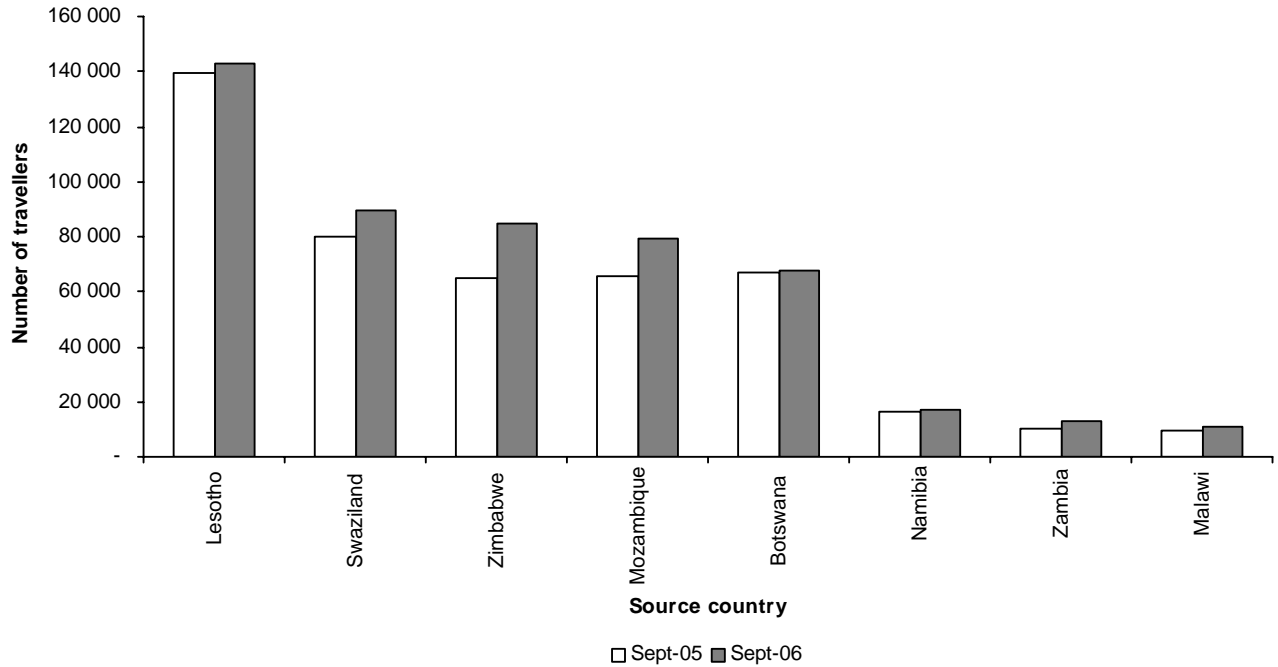
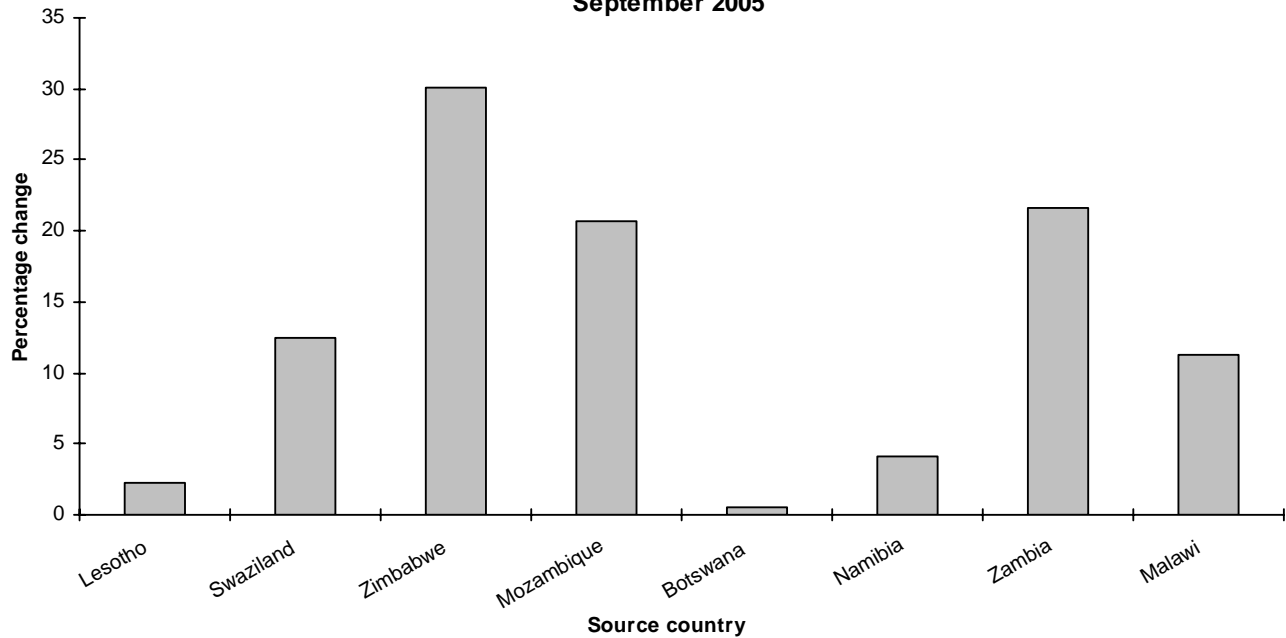
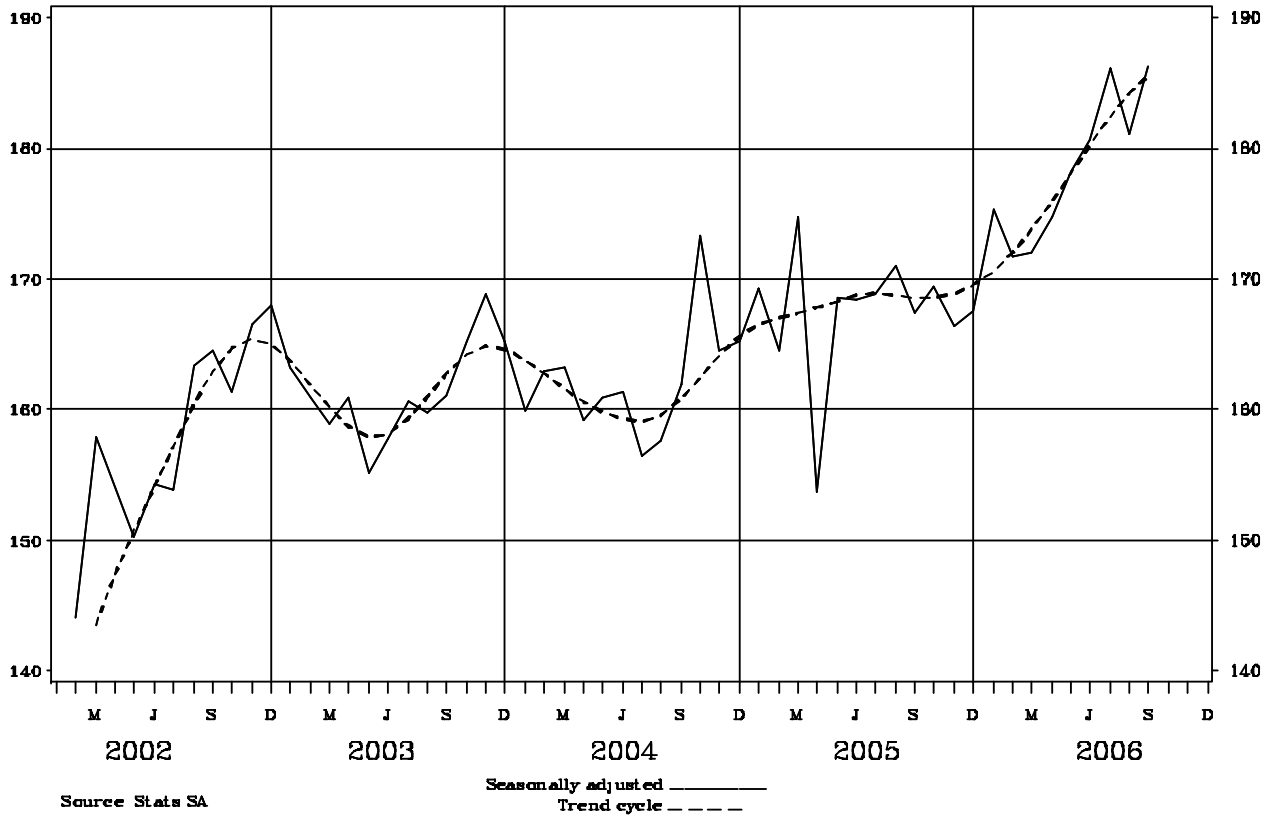


Fig. 3b: Percentage change in the number of travellers from mainland African countries arriving from leading source countries in September 2006 compared with September 2005



**Fig 4: Overseas Travellers - Arrivals
Thousands**



1. TRAVELLERS

1.1 Arrivals and departures of foreign travellers and South African residents

1.1.1 Purpose of visit

Purpose of visit	September		Jan – Sept. Cum. Total		Year Total
	2005	2006	2005	2006	2005
(a) ARRIVALS:					
1.Foreign travellers					
.Actual data	628 398	699 282	5 401 188	6 142 519	7 518 320
.Seasonally adjusted data	646 993	720 670
.Business	18 850	17 665	148 899	146 865	201 522
.Holiday	571 977	647 733	4 861 527	5 640 366	6 811 647
.Study	8 318	8 257	108 650	105 132	133 041
.Work	7 924	9 781	69 262	78 766	94 679
.Contract workers	4 339	-	41 875	8 027	54 899
.Border traffic concession	11 785	11 358	126 303	119 938	164 087
.Transit	5 016	4 150	42 711	40 584	55 886
.Unspecified	189	338	1 961	2 841	2 559
2.South African residents	-	366 225	-	3 221 540	-
(b) DEPARTURES:					
1.Foreign travellers	554 843	621 562	4 819 072	5 381 292	6 728 742
2.South Africans residents	-	387 133	-	3 119 338	-

1. TRAVELLERS

1.1 Arrivals and departures of foreign travellers and South African residents

1.1.2 Mode of travel

Arrivals and departures	Total	Mode of travel (September 2006)								
		AIR					RAIL	ROAD	SEA	UNSPEC.
		(C/Town)	(Durban)	(OR Tambo)	(Other)	Total				
(a) ARRIVALS:										
1.Foreign travellers	699 282	34 096	513	150 875	1 046	186 530	42	500 379	783	11 548
2.South African residents	366 225	17 697	1 010	128 088	3 012	149 807	6	214 930	138	1 344
(b) DEPARTURES:										
1.Foreign travellers	621 562	29 462	384	135 621	1 045	166 512	252	454 002	773	23
2.South African residents	387 133	18 080	1 251	133 623	3 064	156 018	97	230 780	182	56

1. TRAVELLERS
1.2 Foreign travellers
1.2.1 Arrivals by country of residence and mode of travel

Country	Foreign travellers												
	Mode of travel (September 2006)												
	September		AIR					RAIL	ROAD	SEA	UNSPEC.	Jan-Sept. Cum. Total	
	2005	2006	(C/Town)	(Durban)	(OR Tambo)	(Other)	Total					2006	2005
GRAND TOTAL	628 398	699 282	34 096	513	150 875	1 046	186 530	42	500 379	783	11 548	6 142 519	5 401 188
OVERSEAS TOTAL	155 909	173 348	32 417	388	115 836	679	149 320	21	22 877	672	458	1 495 571	1 407 549
EUROPE	96 222	109 699	26 457	66	65 533	311	92 367	13	16 973	215	131	950 564	905 457
Austria	1 234	1 504	415	1	858	10	1 284	1	219	-	-	14 114	13 743
Belgium	2 985	3 486	643	2	2 110	14	2 769	1	714	2	-	26 994	25 953
Denmark	1 375	1 699	307	1	1 196	2	1 506	-	178	4	11	16 952	14 899
France	6 232	7 126	475	9	5 648	25	6 157	-	953	10	6	74 853	73 007
Germany	20 011	22 587	6 697	6	10 941	30	17 674	5	4 893	9	6	172 264	165 821
Greece	555	868	226	1	524	1	752	-	95	14	7	5 982	6 013
Ireland	2 483	2 603	835	1	1 518	9	2 363	-	229	2	9	25 214	24 217
Italy	4 004	4 423	985	2	2 927	10	3 924	-	487	8	4	40 311	39 072
Netherlands	10 623	11 824	2 722	4	6 200	13	8 939	5	2 866	10	4	79 073	73 601
Portugal	2 462	2 585	187	5	1 265	4	1 461	-	1 121	1	2	20 535	22 101
Spain	2 222	2 792	433	1	2 047	1	2 482	-	294	15	1	23 183	21 185
Sweden	1 787	1 966	439	2	1 253	6	1 700	-	265	1	-	24 725	22 439
Switzerland	2 814	3 061	450	1	2 105	22	2 578	-	483	-	-	26 720	24 336
UK	31 996	35 050	9 097	19	22 316	142	31 574	-	3 428	27	21	341 391	332 305
Other	5 439	8 125	2 546	11	4 625	22	7 204	1	748	112	60	58 253	46 765
NORTH AMERICA	23 320	24 969	2 627	12	19 667	253	22 559	1	2 343	16	50	231 007	211 511
Canada	3 136	3 530	507	1	2 574	50	3 132	-	389	3	6	34 439	29 094
USA	20 174	21 435	2 120	11	17 091	203	19 425	1	1 952	13	44	196 533	182 407
Other	10	4	-	-	2	-	2	-	2	-	-	35	10
CENTRAL & SOUTH AMERICA	4 565	4 789	503	3	3 897	31	4 434	-	333	8	14	40 645	36 745
Argentina	718	566	205	-	334	2	541	-	25	-	-	7 032	7 150
Brazil	2 344	2 608	43	-	2 366	17	2 426	-	177	4	1	21 666	17 175
Chile	219	288	61	-	201	2	264	-	22	1	1	2 286	2 057
Other	1 284	1 327	194	3	996	10	1 203	-	109	3	12	9 661	10 363

1. TRAVELLERS

1.2 Foreign travellers

1.2.1 Arrivals by country of residence and mode of travel (continued)

Country	Foreign travellers												
	Mode of travel (September 2006)												
	September		AIR					RAIL	ROAD	SEA	UNSPEC.	Jan-Sept. Cum. Total	
	2005	2006	(C/Town)	(Durban)	(OR Tambo)	(Other)	Total					2006	2005
AUSTRALASIA	9 630	11 275	785	19	9 495	32	10 331	-	934	9	1	78 270	70 046
Australia	7 922	9 497	605	19	8 096	27	8 747	-	745	4	1	64 622	56 525
New Zealand	1 635	1 724	176	-	1 361	5	1 542	-	177	5	-	13 103	12 888
Other	73	54	4	-	38	-	42	-	12	-	-	545	633
MIDDLE EAST	3 203	2 933	170	-	2 567	17	2 754	2	154	4	19	28 366	26 679
Israel	1 610	1 291	21	-	1 215	6	1 242	-	49	-	-	11 050	11 984
Saudi Arabia	244	224	17	-	189	4	210	-	12	2	-	3 506	4 278
Turkey	295	443	66	-	331	-	397	-	27	2	17	4 435	3 080
Other	1 054	975	66	-	832	7	905	2	66	-	2	9 375	7 337
ASIA	17 890	18 431	1 775	169	13 790	35	15 769	5	2 001	420	236	154 206	144 382
China	4 245	3 377	393	-	2 687	1	3 081	-	266	-	30	29 385	30 226
Hong Kong	568	584	23	-	541	-	564	-	19	-	1	5 566	5 826
India	3 057	4 371	74	160	3 325	4	3 563	2	645	47	114	36 054	30 179
Japan	2 915	2 835	182	-	2 503	4	2 689	-	116	29	1	22 221	19 623
Malaysia	924	789	224	1	540	-	765	-	22	2	-	6 510	7 556
Philippines	468	629	49	-	335	-	384	-	94	114	37	5 152	4 962
Rep of China (Taiwan)	1 221	1 687	174	1	1 123	23	1 321	-	245	89	32	11 110	10 347
Rep of Korea	1 041	1 200	103	-	986	-	1 089	-	102	4	5	12 830	12 033
Singapore	571	592	236	-	337	-	573	-	16	2	1	4 750	4 251
Other	2 880	2 367	317	7	1 413	3	1 740	3	476	133	15	20 628	19 379

1. TRAVELLERS

1.2 Foreign travellers

1.2.1 Arrivals by country of residence and mode of travel (concluded)

Country	Foreign travellers												
	Mode of travel (September 2006)												
	September		AIR					RAIL	ROAD	SEA	UNSPEC.	Jan-Sept. Cum. Total	
	2005	2006	(C/Town)	(Durban)	(OR Tambo)	(Other)	Total					2006	2005
INDIAN OCEAN ISLANDS													
	1 079	1 252	100	119	887	-	1 106	-	139	-	7	12 513	12 729
Mauritius	951	1 097	98	107	750	-	955	-	135	-	7	10 465	10 436
Other	128	155	2	12	137	-	151	-	4	-	-	2 048	2 293
MAINLAND AFRICA													
	469 721	522 694	1 618	119	34 221	361	36 319	20	476 636	89	9 630	4 618 676	3 942 122
Angola	2 398	2 431	109	-	2 172	14	2 295	-	135	1	-	21 835	21 685
Botswana	67 228	67 618	39	2	2 427	141	2 609	-	64 970	-	39	549 118	589 148
Kenya	1 839	1 946	11	-	1 643	19	1 673	-	272	-	1	17 623	16 295
Lesotho	139 701	142 909	5	-	714	1	720	1	133 092	-	9 096	1 412 269	1 203 453
Malawi	9 608	10 687	2	-	1 699	7	1 708	-	8 972	-	7	92 348	78 362
Mozambique	65 893	79 556	3	94	2 003	17	2 117	3	77 378	-	58	674 982	446 267
Namibia	16 341	17 023	1 316	-	2 672	11	3 999	8	12 933	82	1	162 306	163 399
Nigeria	2 798	3 310	19	2	2 955	13	2 989	1	310	-	10	25 727	22 001
Swaziland	79 740	89 724	-	14	751	8	773	3	88 781	-	167	732 419	670 248
Zambia	10 518	12 785	10	3	4 181	28	4 222	-	8 551	5	7	116 773	93 955
Zimbabwe	65 085	84 663	22	3	5 366	73	5 464	3	78 977	1	218	729 924	564 959
Other	8 572	10 042	82	1	7 638	29	7 750	1	2 265	-	26	83 352	72 350
UNSPECIFIED	2 768	3 240	61	6	818	6	891	1	866	22	1 460	28 272	51 517

1. TRAVELLERS
1.2 Foreign travellers
1.2.2 Arrivals by country of residence and purpose of visit

Country	Foreign travellers											
	September		Purpose of visit (September 2006)								Contract worker	Border traffic concession
	2005	2006	Visitors/tourists*						Total			
			Business	Holiday	Study	Work	Transit	Unspec.				
GRAND TOTAL	628 398	699 282	17 665	647 733	8 257	9 781	4 150	338	687 924	-	11 358	
OVERSEAS TOTAL	155 909	173 348	8 518	155 907	1 182	6 492	937	30	173 066	-	282	
EUROPE	96 222	109 699	5 215	100 120	598	3 296	411	1	109 641	-	58	
Austria	1 234	1 504	75	1 395	5	25	4	-	1 504	-	-	
Belgium	2 985	3 486	141	3 242	16	78	9	-	3 486	-	-	
Denmark	1 375	1 699	97	1 545	10	29	6	1	1 688	-	11	
France	6 232	7 126	307	6 531	43	218	21	-	7 120	-	6	
Germany	20 011	22 587	739	21 235	131	445	32	-	22 582	-	5	
Greece	555	868	87	719	6	42	14	-	868	-	-	
Ireland	2 483	2 603	78	2 435	17	61	3	-	2 594	-	9	
Italy	4 004	4 423	239	4 074	9	63	36	-	4 421	-	2	
Netherlands	10 623	11 824	304	11 295	77	134	10	-	11 820	-	4	
Portugal	2 462	2 585	82	2 448	10	22	21	-	2 583	-	2	
Spain	2 222	2 792	71	2 628	5	65	23	-	2 792	-	-	
Sweden	1 787	1 966	174	1 688	25	73	6	-	1 966	-	-	
Switzerland	2 814	3 061	92	2 899	22	44	4	-	3 061	-	-	
UK	31 996	35 050	1 646	32 460	157	664	106	-	35 033	-	17	
Other	5 439	8 125	1 083	5 526	65	1 333	116	-	8 123	-	2	
NORTH AMERICA	23 320	24 969	901	23 173	283	465	99	-	24 921	-	48	
Canada	3 136	3 530	171	3 229	23	82	20	-	3 525	-	5	
USA	20 174	21 435	730	19 940	260	383	79	-	21 392	-	43	
Other	10	4	-	4	-	-	-	-	4	-	-	
CENTRAL & SOUTH AMERICA	4 565	4 789	137	4 413	27	126	85	-	4 788	-	1	
Argentina	718	566	15	517	6	18	10	-	566	-	-	
Brazil	2 344	2 608	33	2 472	9	45	49	-	2 608	-	-	
Chile	219	288	17	257	-	9	4	-	287	-	1	
Other	1 284	1 327	72	1 167	12	54	22	-	1 327	-	-	

*Purpose of visit in this case is not linked to duration of stay therefore these individuals can be either visitors or tourists.

1. TRAVELLERS

1.2 Foreign travellers

1.2.2 Arrivals by country of residence and purpose of visit (continued)

Country	Foreign travellers											
	September		Purpose of visit (September 2006)								Contract worker	Border traffic concession
			Visitors/tourists*									
	2005	2006	Business	Holiday	Study	Work	Transit	Unspec.	Total			
AUSTRALASIA	9 630	11 275	294	10 800	12	124	43	1	11 274	-	1	
Australia	7 922	9 497	252	9 101	8	99	36	-	9 496	-	1	
New Zealand	1 635	1 724	36	1 660	3	19	6	-	1 724	-	-	
Other	73	54	6	39	1	6	1	1	54	-	-	
MIDDLE EAST	3 203	2 933	220	2 527	43	121	20	-	2 931	-	2	
Israel	1 610	1 291	65	1 196	4	26	-	-	1 291	-	-	
Saudi Arabia	244	224	12	197	3	12	-	-	224	-	-	
Turkey	295	443	38	339	5	44	17	-	443	-	-	
Other	1 054	975	105	795	31	39	3	-	973	-	2	
ASIA	17 890	18 431	1 715	13 707	205	2 338	273	28	18 266	-	165	
China	4 245	3 377	537	2 293	56	402	56	3	3 347	-	30	
Hong Kong	568	584	16	554	5	7	1	-	583	-	1	
India	3 057	4 371	467	3 135	43	562	73	1	4 281	-	90	
Japan	2 915	2 835	164	2 469	12	173	17	-	2 835	-	-	
Malaysia	924	789	58	693	2	31	5	-	789	-	-	
Philippines	468	629	25	215	-	328	52	-	620	-	9	
Rep of China (Taiwan)	1 221	1 687	144	1 206	17	264	28	5	1 664	-	23	
Rep of Korea	1 041	1 200	34	1 054	52	49	11	-	1 200	-	-	
Singapore	571	592	61	509	-	20	1	-	591	-	1	
Other	2 880	2 367	209	1 579	18	502	29	19	2 356	-	11	

*Purpose of visit in this case is not linked to duration of stay therefore these individuals can be either visitors or tourists.

1. TRAVELLERS

1.2 Foreign travellers

1.2.2 Arrivals by country of residence and purpose of visit (concluded)

Country	Foreign travellers											
	September		Purpose of visit (September 2006)								Contract worker	Border traffic concession
			Visitors/tourists*									
	2005	2006	Business	Holiday	Study	Work	Transit	Unspec.	Total			
INDIAN OCEAN ISLANDS	1 079	1 252	36	1 167	14	22	6	-	1 245	-	7	
Mauritius	951	1 097	33	1 019	14	20	4	-	1 090	-	7	
Other	128	155	3	148	-	2	2	-	155	-	-	
MAINLAND AFRICA	469 721	522 694	9 118	490 882	6 862	2 706	3 201	308	513 077	-	9 617	
Angola	2 398	2 431	80	2 103	134	75	38	1	2 431	-	-	
Botswana	67 228	67 618	163	63 886	2 821	255	456	-	67 581	-	37	
Kenya	1 839	1 946	129	1 543	108	155	9	1	1 945	-	1	
Lesotho	139 701	142 909	787	131 129	690	259	954	-	133 819	-	9 090	
Malawi	9 608	10 687	593	9 878	72	57	63	17	10 680	-	7	
Mozambique	65 893	79 556	281	78 747	254	132	85	1	79 500	-	56	
Namibia	16 341	17 023	1 928	13 350	584	106	1 054	-	17 022	-	1	
Nigeria	2 798	3 310	117	2 919	86	153	20	5	3 300	-	10	
Swaziland	79 740	89 724	417	87 738	1 043	132	227	-	89 557	-	167	
Zambia	10 518	12 785	1 802	10 637	165	112	59	3	12 778	-	7	
Zimbabwe	65 085	84 663	1 882	81 020	591	784	121	48	84 446	-	217	
Other	8 572	10 042	939	7 932	314	486	115	232	10 018	-	24	
UNSPECIFIED	2 768	3 240	29	944	213	583	12	-	1 781	-	1 459	

*Purpose of visit in this case is not linked to duration of stay therefore these individuals can be either visitors or tourists.

EXPLANATORY NOTES

1. Sources of data

Legal movements across South African borders as well as legal immigration into South Africa fall under the jurisdiction of the Department of Home Affairs (DHA). Information on tourism and documented immigration is obtained from all ports of entry. Information on arrivals into and departures from South Africa is captured by DHA and loaded onto the mainframe at State Information Technology Agency (SITA). Stats SA accesses these data remotely, which is then used as part of the input data for this report. Information on legal immigrants to South Africa is sent to Stats SA on computer printout from DHA. The information on the printout is coded and captured by data capturing staff at Stats SA.

2. Glossary of terms

Key terms used in this release are defined as follows:

Tourism comprises the activities of persons travelling to and staying in places outside their usual environment for not more than one consecutive year for leisure, business and other purposes not related to the exercise of an activity remunerated from within the place visited. The usual environment of a person consists of a certain area around his/her place of residence plus all other places s/he frequently visits.

A tourist (overnight visitor) is a visitor who stays at least one night in collective or private accommodation in the place visited. An international tourist is an international visitor who stays at least one night in collective or private accommodation in the country visited.

Traveller is any person on a trip between two or more localities. An **international traveller** refers to any person on a trip between two or more countries.

South African resident refers to either a South African citizen or a non-South African citizen with a South African permanent residence permit.

Foreign traveller refers to a traveller who is not a South African resident.

Mainland Africa refers to all the countries in Africa excluding the islands.

Overseas refers to all countries except countries from mainland Africa and from 'unspecified' countries.

3. Symbols and abbreviations used

- = nil

.. = not applicable

unspec = unspecified

cum = cumulative

General information

Stats SA publishes approximately 300 different statistical releases each year. It is not economically viable to produce them in more than one of South Africa's eleven official languages. Since the releases are used extensively, not only locally but also by international economic and social-scientific communities, Stats SA releases are published in English.

Stats SA has copyright on this publication. Users may apply the information as they wish, provided that they acknowledge Stats SA as the source of the basic data wherever they process, apply, utilise, publish or distribute the data; and also that they specify that the relevant application and analysis (where applicable) result from their own processing of the data.

Advance release calendar

An advance release calendar is disseminated on www.statssa.gov.za

Stats SA products

A complete set of Stats SA publications is available at the Stats SA Library and the following libraries:

National Library of South Africa, Pretoria Division
National Library of South Africa, Cape Town Division
Natal Society Library, Pietermaritzburg
Library of Parliament, Cape Town
Bloemfontein Public Library
Johannesburg Public Library
Eastern Cape Library Services, King William's Town
Central Regional Library, Polokwane
Central Reference Library, Nelspruit
Central Reference Collection, Kimberley
Central Reference Library, Mafikeng

Stats SA also provides a subscription service.

Electronic services

A large range of data are available via on-line services, diskette and computer printouts. For more details about our electronic data, contact user information services.

You can visit us on the Internet at: www.statssa.gov.za

Enquiries

Telephone: (012) 310 8600/ 8390/ 8351/ 4892/ 8496/ 8095 (user information services)
(012) 310 8384 (technical enquiries)
(012) 310 8161 (orders)
(012) 310 4883/4885/8018 (library)

Fax: (012) 310 8500/ 8495 (user information services)
(012) 310 6937 (technical enquiries)

Email: kennethma@statssa.gov.za (technical enquiries)
info@statssa.gov.za (user information services)
distribution@statssa.gov.za (orders)

Postal address: Private Bag X44, Pretoria, 0001

Produced by Stats SA