



**Statistics
South Africa**

Preferred supplier of quality statistics



Statistical release

P0351

Tourism and Migration

October 2006

**Embargoed until:
08 March 2007
11:00**

Enquiries:

User Information Services
Tel.: (012) 310 8600 / 4892 / 8390

Forthcoming issue:

November 2006

Expected release date

March 2007

Statistics South Africa • Mbalom-balo ya Afrika Tshipembe • Tihlayo-tiko ta Afrika-Dzonga • Divalopalo tsa Aforika Borwa • Ezezibalo zaseNingizimu Afrika
Divalopalo tša Afrika Borwa • Divalopalo tsa Afrika Borwa • Ubalom lwaseMzantsi Afrika • Telubalo eNingizimu Afrika • iNanimbalo leSewula Afrika • Statistiek Suid-Afrika

email: info@statssa.gov.za
www.statssa.gov.za

170 Andries Street • Private Bag X44, 0001 Pretoria, South Africa
Tel: +27(12) 310 8911, Fax: +27(12) 321 7381

Contents

	Page
Key findings	
1. Foreign travellers	2
2. Ports of entry and modes of travel used by overseas and mainland Africa travellers	2
2.1 Overseas travellers	2
2.2 Mainland Africa travellers	2
3. Purpose of visit	3
4. Leading source countries of overseas and mainland Africa travellers	3
5. Historical trends in travel	3
6. South African residents	3
Graphics	4-7
Tables	
1. Travellers	
1.1 Arrivals and departures of foreign travellers	
1.1.1 Purpose of visit	8
1.1.2 Mode of travel	8
1.2 Foreign travellers	
1.2.1 Arrivals by country of residence and mode of travel	9
1.2.2 Arrivals by country of residence and purpose of visit	12
Explanatory notes	
1. Sources of data	15
2. Glossary of terms	15
3. Symbols and abbreviations used	15
General information	16

Note: The information on the total number of arrivals and departures of South African citizens and permanent residents is collected from the scanning of passports. However, data on country of final destination and purpose of visit will be available when the Department of Home Affairs re-introduces the completion of departure forms by South African citizens and permanent residents at the three international airports (OR Tambo, Cape Town and Durban).

The release provides information on travellers. Due to unavailability of data from suppliers, information on documented immigrants is not included in this release. The October 2006 documented immigration information will be provided as soon as it is made available to Stats SA.

It is important to note that travellers include (a) same day visitors and tourists and (b) other travellers such as migrant workers from other countries paid in South Africa.

KEY FINDINGS

1. Foreign travellers

The total number of foreign travellers who visited South Africa through all its parts of entry during October from overseas, mainland Africa as well as those who did not specify their country of residence was 765 182. The October 2006 figure represents an increase of 11,2% when compared with the October 2005 figure of 688 062 (see Table 1.1.1). The number of foreign travellers who departed from South Africa in October 2006 was 647 500, which increased by 7,7% from 601 296 recorded in October 2005.

During October 2006, the most common mode of travel used by foreign travellers arriving in South Africa was road, involving 523 053 (68,3%) of all travellers. There were 227 024 (29,7%) travellers who came to South Africa by air (see Table 1.1.2). Of the total number of foreign travellers arriving by air, 182 615 (80,4%) arrived through OR Tambo International Airport while 43 042 (19,0%) arrived through Cape Town International Airport, 352 (0,2%) arrived through Durban International Airport and the rest, 1 015 (0,4%), arrived through other airports (see Table 1.1.2). Those arriving by rail, sea and unspecified modes of travel were 15 105.

Among the total number of foreign travellers departing from South Africa, road was the most common mode of travel (451 309 representing 69,7%), followed by air (195 284 representing 30,2%). Of the total number of foreign travellers departing by air, 155 141 (79,4%) departed from OR Tambo International Airport, 38 720 (19,8%) departed from Cape Town International Airport, 348 (0,2%) used Durban International Airport and the rest, 1 075 (0,6%), departed through other airports (see Table 1.1.2). Those departing by rail, sea and unspecified modes of travel were 907 (0,1%). Figures 1a and 1b show the breakdown of air arrivals and departures for foreign travellers, respectively, according to the airport used. It is observed that the distribution of air arrivals by port of entry and air departures by port of exit are almost the same.

2. Ports of entry and modes of travel used by overseas and mainland Africa travellers

2.1 Overseas travellers

Table 1.2.1 shows that during October 2006, 219 466 overseas travellers visited South Africa. This represents a 7,1% increase in the volume of overseas travellers as compared to October 2005 when there were 205 010 overseas travellers.

It is further observed that in October 2006, there were 189 116 air arrivals from overseas, which accounts for 86,2% of all overseas arrivals. Of these overseas air arrivals, 146 725 (77,6%) arrived through OR Tambo International Airport; 41 584 (22,0%) arrived through Cape Town International Airport; 227 (0,1%) arrived through Durban International Airport and the rest, 580 (0,3%), arrived through other airports.

The number of overseas travellers arriving by road during October 2006 was 28 656 (13,0%). The number of those arriving by rail, sea and unspecified mode of travel was 1 694 (0,8%). (An excel spreadsheet on the mode of travel for all countries of origin is available on request).

2.2 Mainland Africa travellers

Table 1.2.1 further shows that the total number of travellers who arrived in South Africa from mainland Africa during October 2006 was 541 997, as compared to the October 2005 figure of 479 859, representing an increase of 12,9%. Of these travellers from mainland Africa, the number arriving by road was 493 331 (91,0%).

In October 2006, there were 37 042 (6,8%) air travellers arriving from mainland Africa. Of these air arrivals, 35 088 (94,7%) arrived through OR Tambo International Airport, 1 414 (3,8%) arrived through Cape Town International Airport, 121 (0,3%) arrived through Durban International Airport while the rest, 419 (1,2%), arrived through other airports. The number of travellers from mainland Africa arriving by rail, sea and unspecified mode of travel was 11 624, which constituted 2,2% of all travellers from Mainland Africa.

3. Purpose of visit

Overseas travellers: Of the 219 466 overseas travellers visiting South Africa during October 2006, 204 138 (93,0%) stated that they were in South Africa for holidays, while 7 142 (3,3%) stated that they were on business trips (see Table 1.2.2). Overseas travellers arriving for the purpose of work were 5 999 (2,7%), those on transit were 1 105 (0,5%), those visiting for the study purpose were 733 (0,3%) and 333 (0,2%) travellers who acquired their border traffic concessions in October 2006. (An excel spreadsheet on the purpose of visit for all countries of origin is available on request.)

Mainland Africa travellers: Of the 541 997 travellers from mainland Africa visiting South Africa during October 2006, the majority 506 985 (93,5%) stated that they were in South Africa for holidays, while 9 466 (1,7%) stated that they were on business trips. A further breakdown of travellers from mainland Africa is as follows: those visiting for the purpose of study were 8 502 (1,6%), those arriving for **work purpose** were 2 602 (0,5%), those with border traffic concession were 11 411 (2,1%) and travellers on transit were 2 707 (0,5%), as shown in Table 1.2.2.

4. Leading source countries of overseas and mainland Africa travellers

Overseas travellers: Figure 2a indicates that during October 2006, the number of travellers from the UK visiting South Africa was 46 814 (21,3%), making it the leading country of origin of overseas travellers. This was followed by travellers from Germany, 31 151 (14,2%) and the USA, 21 072 (9,6%). Other main countries of origin of overseas travellers were: the Netherlands, 18 631 (8,5%); France, 11 824 (5,4%); Australia, 8 444 (3,8%); Japan, 6 261 (2,9%) and Switzerland, 5 417 (2,5%). Upon comparing the figures of October 2006 with those of October 2005 (see Figure 2b), the highest increase in the number of arrivals from these leading source countries was for Australia, (29,0% increase from 6 547 in 2005 to 8 444 in 2006).

Travellers from mainland Africa: During October 2006, the top eight countries (Figure 3a) in mainland Africa from which travellers arriving in South Africa came were: Lesotho, 169 287 (31,2%); Zimbabwe, 86 848 (16,0%); Mozambique, 83 443 (15,4%); Swaziland, 80 146 (14,8%); Botswana, 61 910 (11,4%); Namibia, 17 271 (3,2%); Zambia, 14 051 (2,6%) and Malawi, 11 088 (2,0%). When comparing arrival figures from the leading source countries from mainland Africa, (see Figure 3b) for October 2005 and October 2006, the highest increase in the number of travellers was from Zimbabwe, (31,6% increase from 65 974 in 2005 to 86 848 in 2006).

5. Historical trends in travel

It should be borne in mind that there is often a substantial month-to-month variation in travelling figures, and one needs to look at a longer period of several months to be able to detect any trends and patterns. The trend regarding the number of overseas travellers arriving in South Africa since 2002 is shown in Figure 4. Although the figure shows evidence of seasonal fluctuations, the level of overseas travel over the period has shown an upward trend since 2002.

6. South African residents

During October 2006, the most common mode of travel used by South African residents arriving in South Africa was road, involving 200 289 (58,0%) travellers, followed by air, 143 069 (41,5%) and those arriving by rail, sea and unspecified modes of travel, 1 607 (0,5%). The most common mode of travel for South African residents departing was road, involving 182 090 (59,7%) travellers, followed by air, 122 630 (40,2%) and those departing by rail, sea and unspecified modes of travel, 265 (0,1%) as shown in Table 1.1.2.

PJ Lehohla
Statistician-General

Fig 1a: Air arrivals by port of entry, South Africa, October 2006

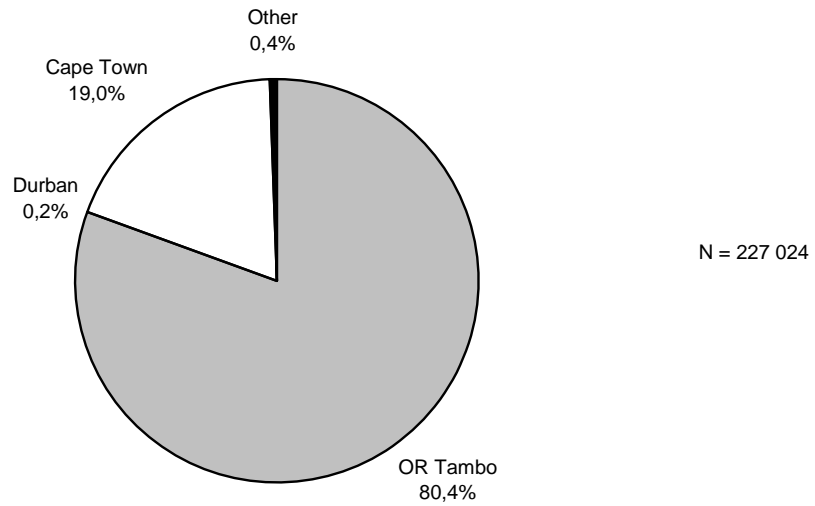


Fig 1b: Air departures by port of exit, South Africa, October 2006

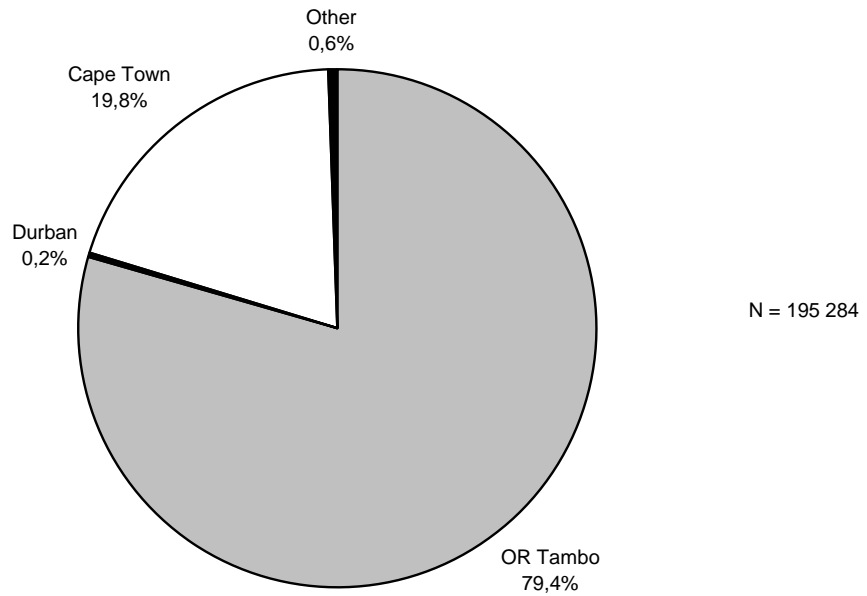


Fig. 2a: The number of overseas travellers arriving from leading source countries in October 2005 and October 2006

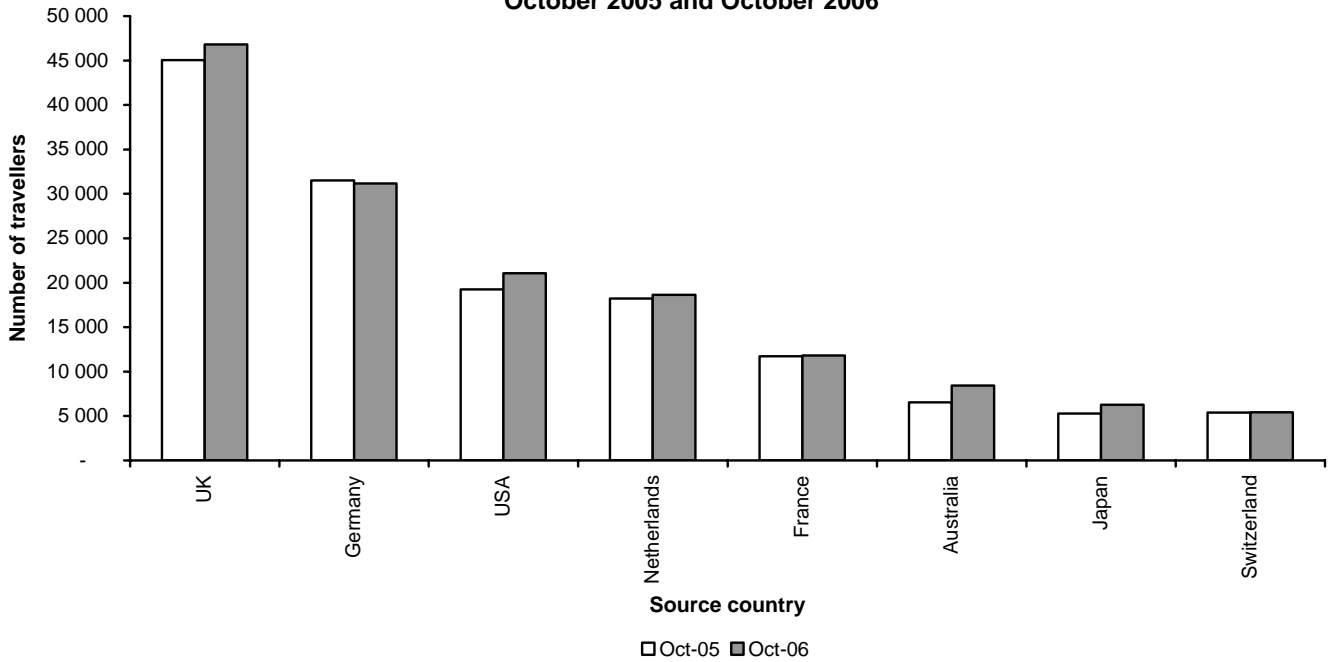


Fig. 2b: Percentage change in number of overseas travellers arriving from leading source countries in October 2006 compared with October 2005

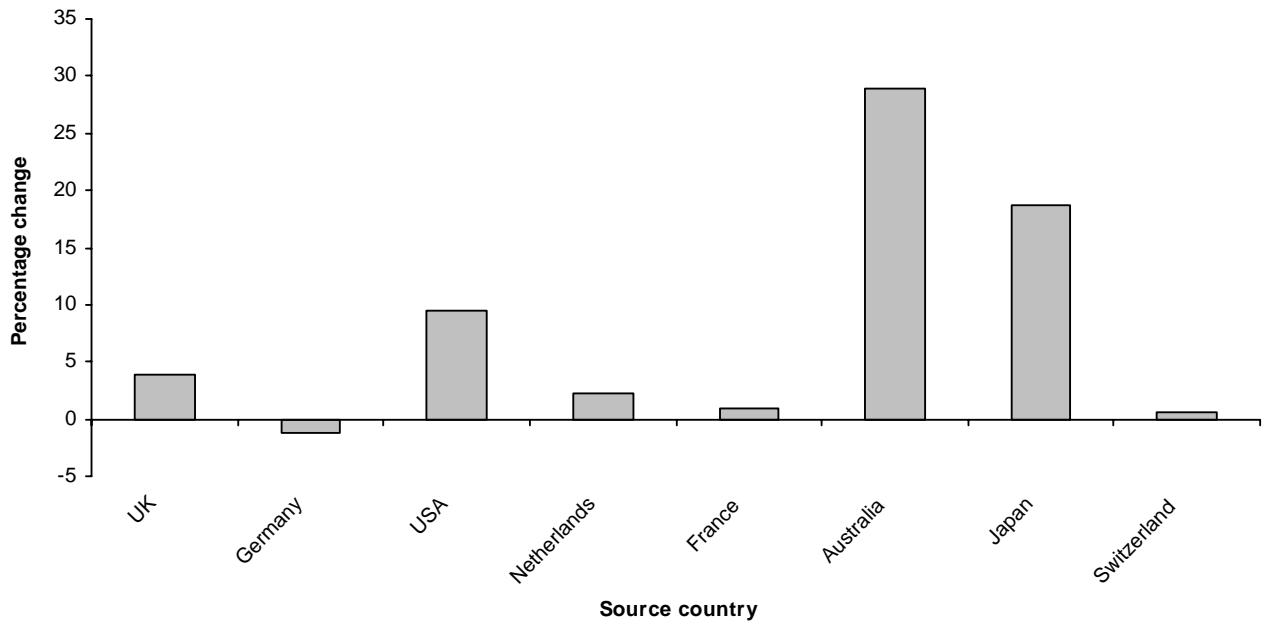


Fig. 3a: The number of travellers from mainland African countries arriving from leading source countries in October 2005 and October 2006

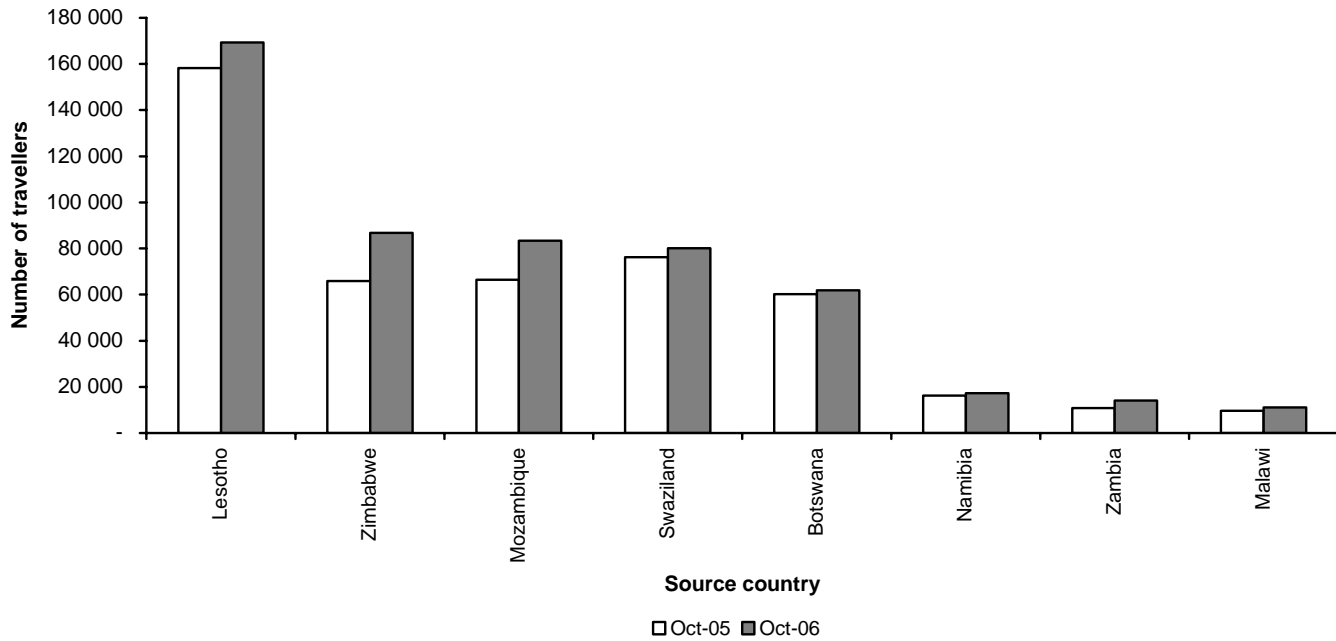
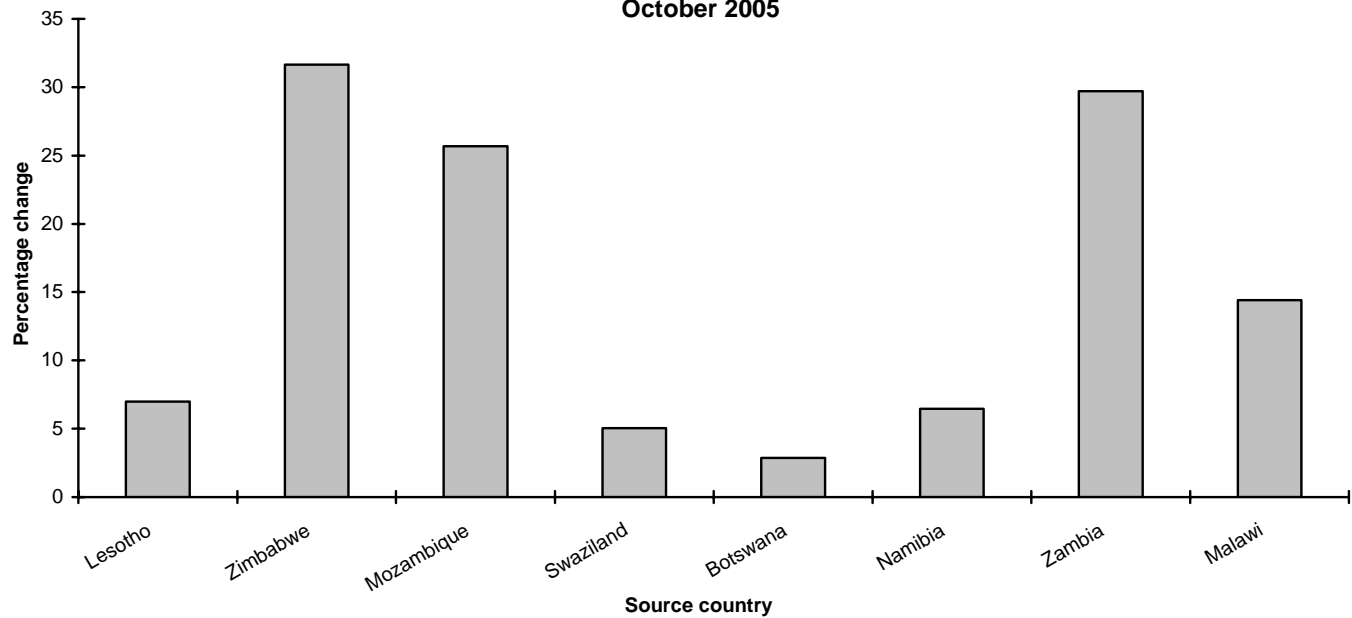
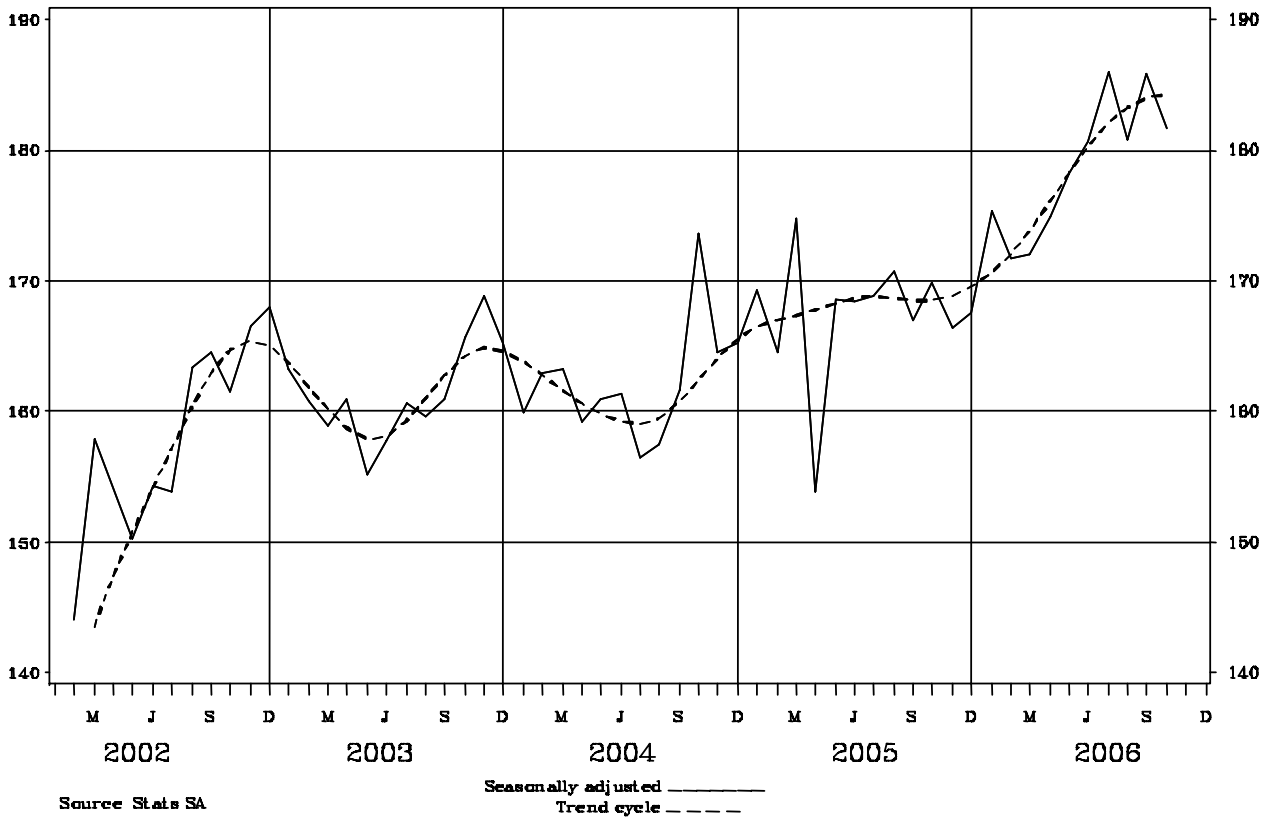


Fig. 3b: Percentage change in the number of travellers from mainland African countries arriving from leading source countries in October 2006 compared with October 2005



**Fig 4: Overseas Travellers – Arrivals
Thousands**



1. TRAVELLERS

1.1 Arrivals and departures of foreign travellers and South African residents

1.1.1 Purpose of visit

Purpose of visit	October		Jan – Oct. Cum. Total		Year Total
	2005	2006	2005	2006	2005
(a) ARRIVALS:					
1.Foreign travellers					
.Actual data	688 062	765 182	6 089 250	6 907 701	7 518 320
.Seasonally adjusted data	646 038	717 342
.Business	18 741	16 635	167 640	163 500	201 522
.Holiday	626 445	712 128	5 487 972	6 352 494	6 811 647
.Study	10 439	9 523	119 089	114 655	133 041
.Work	8 899	9 229	78 161	87 995	94 679
.Contract workers	4 705	-	46 580	8 027	54 899
.Border traffic concession	13 987	13 509	140 290	133 447	164 087
.Transit	4 670	3 818	47 381	44 402	55 886
.Unspecified	176	340	2 137	3 181	2 559
2.South African residents	-	344 965	-	3 566 505	-
(b) DEPARTURES:					
1.Foreign travellers	601 296	647 500	4 420 368	6 028 792	6 728 742
2.South Africans residents	-	304 985	-	3 424 323	-

1. TRAVELLERS

1.1 Arrivals and departures of foreign travellers and South African residents

1.1.2 Mode of travel

Arrivals and departures	Total	Mode of travel (October 2006)								
		AIR					RAIL	ROAD	SEA	UNSPEC.
		(C/Town)	(Durban)	(OR Tambo)	(Other)	Total				
(a) ARRIVALS:										
1.Foreign travellers	765 182	43 042	352	182 615	1 015	227 024	66	523 053	1 345	13 694
2.South African residents	344 965	14 314	1 165	124 318	3 272	143 069	2	200 289	303	1 302
(b) DEPARTURES:										
1.Foreign travellers	647 500	38 720	348	155 141	1 075	195 284	76	451 309	745	86
2.South African residents	304 985	11 597	1 085	106 574	3 374	122 630	16	182 090	248	1

1. TRAVELLERS
1.2 Foreign travellers
1.2.1 Arrivals by country of residence and mode of travel

Country	Foreign travellers												
	Mode of travel (October 2006)												
	October		AIR					RAIL	ROAD	SEA	UNSPEC.	Jan-Oct. Cum. Total	
	2005	2006	(C/Town)	(Durban)	(OR Tambo)	(Other)	Total					2006	2005
GRAND TOTAL	688 062	765 182	43 042	352	182 615	1 015	227 024	66	523 053	1 345	13 694	6 907 701	6 089 250
OVERSEAS TOTAL	205 010	219 466	41 584	227	146 725	580	189 116	21	28 656	1 160	513	1 715 037	1 612 559
EUROPE	145 907	151 316	35 544	90	91 983	284	127 901	11	22 900	367	137	1 101 880	1 051 364
Austria	2 447	2 582	647	-	1 596	2	2 245	1	335	1	-	16 696	16 190
Belgium	5 376	5 128	801	2	3 007	2	3 812	-	1 307	7	2	32 122	31 329
Denmark	2 485	3 257	553	3	2 383	2	2 941	-	272	40	4	20 209	17 384
France	11 714	11 824	680	19	9 233	10	9 942	-	1 852	20	10	86 677	84 721
Germany	31 519	31 151	9 256	6	15 930	45	25 237	3	5 846	52	13	203 415	197 340
Greece	619	976	66	-	800	2	868	-	93	13	2	6 958	6 632
Ireland	3 773	3 875	1 615	5	2 008	13	3 641	1	227	4	2	29 089	27 990
Italy	4 280	4 212	668	3	3 150	3	3 824	1	386	1	-	44 523	43 352
Netherlands	18 228	18 631	3 812	1	9 166	16	12 995	-	5 616	13	7	97 704	91 829
Portugal	2 299	2 325	155	6	1 210	16	1 387	-	929	3	6	22 860	24 400
Spain	2 243	3 255	239	3	2 672	17	2 931	-	298	22	4	26 438	23 428
Sweden	3 772	4 498	1 146	2	2 848	-	3 996	1	488	6	7	29 223	26 211
Switzerland	5 389	5 417	735	3	3 810	19	4 567	-	846	2	2	32 137	29 725
UK	45 054	46 814	13 454	30	29 514	121	43 119	4	3 579	63	49	388 205	377 359
Other	6 709	7 371	1 717	7	4 656	16	6 396	-	826	120	29	65 624	53 474
NORTH AMERICA	23 101	25 854	2 440	11	20 663	215	23 329	-	2 434	30	61	256 861	234 612
Canada	3 845	4 776	604	1	3 521	18	4 144	-	623	3	6	39 215	32 939
USA	19 237	21 072	1 836	10	17 137	197	19 180	-	1 810	27	55	217 605	201 644
Other	19	6	-	-	5	-	5	-	1	-	-	41	29
CENTRAL & SOUTH AMERICA	4 510	5 219	397	2	4 386	29	4 814	1	382	20	2	45 864	41 255
Argentina	687	600	212	-	372	1	585	-	15	-	-	7 632	7 837
Brazil	2 473	3 171	33	2	2 905	21	2 961	1	202	7	-	24 837	19 648
Chile	244	244	40	-	183	1	224	-	20	-	-	2 530	2 301
Other	1 106	1 204	112	-	926	6	1 044	-	145	13	2	10 865	11 469

1. TRAVELLERS

1.2 Foreign travellers

1.2.1 Arrivals by country of residence and mode of travel (continued)

Country	Foreign travellers												
	Mode of travel (October 2006)												
	October		AIR					RAIL	ROAD	SEA	UNSPEC.	Jan-Oct. Cum. Total	
	2005	2006	(C/Town)	(Durban)	(OR Tambo)	(Other)	Total					2006	2005
AUSTRALASIA	7 861	9 999	645	22	8 383	23	9 073	-	896	18	12	88 269	77 907
Australia	6 547	8 444	496	21	7 179	23	7 719	-	704	12	9	73 066	63 072
New Zealand	1 274	1 479	145	1	1 157	-	1 303	-	168	5	3	14 582	14 162
Other	40	76	4	-	47	-	51	-	24	1	-	621	673
MIDDLE EAST	2 684	3 108	155	2	2 728	3	2 888	-	201	14	5	31 474	29 363
Israel	1 447	1 556	19	-	1 444	-	1 463	-	91	1	1	12 606	13 431
Saudi Arabia	145	179	7	-	149	-	156	-	17	6	-	3 685	4 423
Turkey	333	498	56	-	404	-	460	-	32	5	1	4 933	3 413
Other	759	875	73	2	731	3	809	-	61	2	3	10 250	8 096
ASIA	19 537	22 611	2 245	22	17 560	26	19 853	9	1 743	711	295	176 817	163 919
China	3 456	3 484	364	-	2 794	1	3 159	-	253	-	72	32 869	33 682
Hong Kong	656	524	80	-	435	-	515	-	8	-	1	6 090	6 482
India	3 303	4 332	100	16	3 582	9	3 707	3	510	20	92	40 386	33 482
Japan	5 277	6 261	474	3	5 629	-	6 106	-	88	67	-	28 482	24 900
Malaysia	786	711	275	-	414	-	689	-	19	3	-	7 221	8 342
Philippines	462	696	60	-	403	-	463	-	75	98	60	5 848	5 424
Rep of China (Taiwan)	1 498	1 779	140	1	957	9	1 107	-	294	340	38	12 889	11 845
Rep of Korea	1 193	1 520	110	-	1 320	1	1 431	-	77	12	-	14 350	13 226
Singapore	489	516	101	-	398	-	499	-	16	1	-	5 266	4 740
Other	2 417	2 788	541	2	1 628	6	2 177	6	403	170	32	23 416	21 796

1. TRAVELLERS

1.2 Foreign travellers

1.2.1 Arrivals by country of residence and mode of travel (concluded)

Country	Foreign travellers												
	Mode of travel (October 2006)												
	October		AIR					RAIL	ROAD	SEA	UNSPEC.	Jan-Oct. Cum. Total	
	2005	2006	(C/Town)	(Durban)	(OR Tambo)	(Other)	Total					2006	2005
INDIAN OCEAN ISLANDS													
	1 410	1 359	158	78	1 022	-	1 258	-	100	-	1	13 872	14 139
Mauritius	1 185	1 116	158	74	787	-	1 019	-	96	-	1	11 581	11 621
Other	225	243	-	4	235	-	239	-	4	-	-	2 291	2 518
MAINLAND AFRICA													
	479 859	541 997	1 414	121	35 088	419	37 042	45	493 331	163	11 416	5 160 673	4 421 981
Angola	2 429	2 334	70	-	2 118	28	2 216	1	115	2	-	24 169	24 114
Botswana	60 186	61 910	30	4	2 389	133	2 556	14	59 303	-	37	611 028	649 334
Kenya	2 083	2 062	7	2	1 780	23	1 812	3	241	-	6	19 685	18 378
Lesotho	158 220	169 287	1	2	574	8	585	-	157 838	-	10 864	1 581 556	1 361 673
Malawi	9 691	11 088	2	2	1 589	10	1 603	-	9 476	-	9	103 436	88 053
Mozambique	66 391	83 443	69	78	2 121	15	2 283	-	81 115	-	45	758 425	512 658
Namibia	16 222	17 271	1 152	1	2 664	44	3 861	3	13 300	104	3	179 577	179 621
Nigeria	2 716	3 779	5	10	3 332	13	3 360	1	402	-	16	29 506	24 717
Swaziland	76 292	80 146	2	16	745	8	771	12	79 217	1	145	812 565	746 540
Zambia	10 833	14 051	3	-	4 794	11	4 808	-	9 235	1	7	130 824	104 788
Zimbabwe	65 974	86 848	15	-	5 748	79	5 842	-	80 732	15	255	816 772	630 933
Other	8 822	9 778	58	6	7 234	47	7 345	7	2 357	40	29	93 130	81 172
UNSPECIFIED	3 193	3 719	44	4	802	16	866	-	1 066	22	1 765	31 991	54 710

1. TRAVELLERS
1.2 Foreign travellers
1.2.2 Arrivals by country of residence and purpose of visit

Country	Foreign travellers											
	October		Purpose of visit (October 2006)								Contract worker	Border traffic concession
			Visitors/tourists*									
	2005	2006	Business	Holiday	Study	Work	Transit	Unspec.	Total			
GRAND TOTAL	688 062	765 182	16 635	712 128	9 523	9 229	3 818	340	751 673	-	13 509	
OVERSEAS TOTAL	205 010	219 466	7 142	204 138	733	5 999	1 105	16	219 133	-	333	
EUROPE	145 907	151 316	4 144	143 510	427	2 618	541	-	151 240	-	76	
Austria	2 447	2 582	52	2 494	5	22	9	-	2 582	-	-	
Belgium	5 376	5 128	128	4 899	10	72	19	-	5 128	-	-	
Denmark	2 485	3 257	110	3 098	2	38	5	-	3 253	-	4	
France	11 714	11 824	268	11 251	25	206	72	-	11 822	-	2	
Germany	31 519	31 151	664	29 829	129	467	49	-	31 138	-	13	
Greece	619	976	25	906	5	37	3	-	976	-	-	
Ireland	3 773	3 875	80	3 705	9	63	16	-	3 873	-	2	
Italy	4 280	4 212	154	3 971	6	54	27	-	4 212	-	-	
Netherlands	18 228	18 631	307	18 089	53	152	23	-	18 624	-	7	
Portugal	2 299	2 325	53	2 222	11	20	13	-	2 319	-	6	
Spain	2 243	3 255	61	3 082	4	82	25	-	3 254	-	1	
Sweden	3 772	4 498	141	4 226	17	94	17	-	4 495	-	3	
Switzerland	5 389	5 417	76	5 263	16	40	20	-	5 415	-	2	
UK	45 054	46 814	1 566	44 280	112	671	154	-	46 783	-	31	
Other	6 709	7 371	459	6 195	23	600	89	-	7 366	-	5	
NORTH AMERICA	23 101	25 854	868	24 221	90	492	152	2	25 825	-	29	
Canada	3 845	4 776	157	4 496	8	85	29	-	4 775	-	1	
USA	19 237	21 072	711	19 719	82	407	123	2	21 044	-	28	
Other	19	6	-	6	-	-	-	-	6	-	-	
CENTRAL & SOUTH AMERICA	4 510	5 219	132	4 848	17	140	80	-	5 217	-	2	
Argentina	687	600	15	568	2	12	3	-	600	-	-	
Brazil	2 473	3 171	48	2 998	7	53	65	-	3 171	-	-	
Chile	244	244	7	227	2	5	3	-	244	-	-	
Other	1 106	1 204	62	1 055	6	70	9	-	1 202	-	2	

*Purpose of visit in this case is not linked to duration of stay therefore these individuals can be either visitors or tourists.

1. TRAVELLERS

1.2 Foreign travellers

1.2.2 Arrivals by country of residence and purpose of visit (continued)

Country	Foreign travellers										
	October		Purpose of visit (October 2006)							Contract worker	Border traffic concession
	2005	2006	Visitors/tourists*								
			Business	Holiday	Study	Work	Transit	Unspec.	Total		
AUSTRALASIA	7 861	9 999	224	9 573	14	103	80	-	9 994	-	5
Australia	6 547	8 444	190	8 104	11	79	56	-	8 440	-	4
New Zealand	1 274	1 479	34	1 410	-	23	11	-	1 478	-	1
Other	40	76	-	59	3	1	13	-	76	-	-
MIDDLE EAST	2 684	3 108	195	2 737	22	133	17	-	3 104	-	4
Israel	1 447	1 556	56	1 430	7	50	12	-	1 555	-	1
Saudi Arabia	145	179	5	162	1	11	-	-	179	-	-
Turkey	333	498	38	426	1	31	2	-	498	-	-
Other	759	875	96	719	13	41	3	-	872	-	3
ASIA	19 537	22 611	1 536	17 991	152	2 492	210	14	22 395	-	216
China	3 456	3 484	466	2 489	50	393	12	2	3 412	-	72
Hong Kong	656	524	17	500	-	5	1	-	523	-	1
India	3 303	4 332	415	3 341	23	432	54	1	4 266	-	66
Japan	5 277	6 261	132	5 939	8	156	26	-	6 261	-	-
Malaysia	786	711	33	632	-	40	6	-	711	-	-
Philippines	462	696	23	248	2	347	58	-	678	-	18
Rep of China (Taiwan)	1 498	1 779	160	1 017	12	540	9	4	1 742	-	37
Rep of Korea	1 193	1 520	57	1 373	37	42	11	-	1 520	-	-
Singapore	489	516	41	433	-	41	1	-	516	-	-
Other	2 417	2 788	192	2 019	20	496	32	7	2 766	-	22

*Purpose of visit in this case is not linked to duration of stay therefore these individuals can be either visitors or tourists.

1. TRAVELLERS

1.2 Foreign travellers

1.2.2 Arrivals by country of residence and purpose of visit (concluded)

Country	Foreign travellers											
	October		Purpose of visit (October 2006)								Contract worker	Border traffic concession
			Visitors/tourists*									
	2005	2006	Business	Holiday	Study	Work	Transit	Unspec.	Total			
INDIAN OCEAN ISLANDS												
	1 410	1 359	43	1 258	11	21	25	-	1 358	-	1	
Mauritius	1 185	1 116	40	1 027	7	17	24	-	1 115	-	1	
Other	225	243	3	231	4	4	1	-	243	-	-	
MAINLAND AFRICA												
	479 859	541 997	9 466	506 985	8 502	2 602	2 707	324	530 586	-	11 411	
Angola	2 429	2 334	77	2 083	90	55	26	3	2 334	-	-	
Botswana	60 186	61 910	165	57 294	3 794	276	344	-	61 873	-	37	
Kenya	2 083	2 062	160	1 620	106	163	4	3	2 056	-	6	
Lesotho	158 220	169 287	460	155 866	805	272	1 020	-	158 423	-	10 864	
Malawi	9 691	11 088	583	10 352	36	50	47	11	11 079	-	9	
Mozambique	66 391	83 443	251	82 610	342	118	76	2	83 399	-	44	
Namibia	16 222	17 271	2 225	13 338	910	120	675	-	17 268	-	3	
Nigeria	2 716	3 779	160	3 226	219	142	12	4	3 763	-	16	
Swaziland	76 292	80 146	366	78 079	1 301	126	129	-	80 001	-	145	
Zambia	10 833	14 051	1 858	11 855	152	98	80	1	14 044	-	7	
Zimbabwe	65 974	86 848	2 063	83 108	488	716	168	50	86 593	-	255	
Other	8 822	9 778	1 098	7 554	259	466	126	250	9 753	-	25	
UNSPECIFIED												
	3 193	3 719	27	1 005	288	628	6	-	1 954	-	1 765	

*Purpose of visit in this case is not linked to duration of stay therefore these individuals can be either visitors or tourists.

EXPLANATORY NOTES

1. Sources of data

Legal movements across South African borders as well as legal immigration into South Africa fall under the jurisdiction of the Department of Home Affairs (DHA). Information on tourism and documented immigration is obtained from all ports of entry. Information on arrivals into and departures from South Africa is captured by DHA and loaded onto the mainframe at State Information Technology Agency (SITA). Stats SA accesses these data remotely, which is then used as part of the input data for this report. Information on legal immigrants to South Africa is sent to Stats SA on computer printout from DHA. The information on the printout is coded and captured by data capturing staff at Stats SA.

2. Glossary of terms

Key terms used in this release are defined as follows:

Tourism comprises the activities of persons travelling to and staying in places outside their usual environment for not more than one consecutive year for leisure, business and other purposes not related to the exercise of an activity remunerated from within the place visited. The usual environment of a person consists of a certain area around his/her place of residence plus all other places s/he frequently visits.

A tourist (overnight visitor) is a visitor who stays at least one night in collective or private accommodation in the place visited. An international tourist is an international visitor who stays at least one night in collective or private accommodation in the country visited.

Traveller is any person on a trip between two or more localities. An **international traveller** refers to any person on a trip between two or more countries.

South African resident refers to either a South African citizen or a non-South African citizen with a South African permanent residence permit.

Foreign traveller refers to a traveller who is not a South African resident.

Mainland Africa refers to all the countries in Africa excluding the islands.

Overseas refers to all countries except countries from mainland Africa and from 'unspecified' countries.

3. Symbols and abbreviations used

- = nil

.. = not applicable

unspec = unspecified

cum = cumulative

General information

Stats SA publishes approximately 300 different statistical releases each year. It is not economically viable to produce them in more than one of South Africa's eleven official languages. Since the releases are used extensively, not only locally but also by international economic and social-scientific communities, Stats SA releases are published in English.

Stats SA has copyright on this publication. Users may apply the information as they wish, provided that they acknowledge Stats SA as the source of the basic data wherever they process, apply, utilise, publish or distribute the data; and also that they specify that the relevant application and analysis (where applicable) result from their own processing of the data.

Advance release calendar

An advance release calendar is disseminated on www.statssa.gov.za

Stats SA products

A complete set of Stats SA publications is available at the Stats SA Library and the following libraries:

National Library of South Africa, Pretoria Division
National Library of South Africa, Cape Town Division
Natal Society Library, Pietermaritzburg
Library of Parliament, Cape Town
Bloemfontein Public Library
Johannesburg Public Library
Eastern Cape Library Services, King William's Town
Central Regional Library, Polokwane
Central Reference Library, Nelspruit
Central Reference Collection, Kimberley
Central Reference Library, Mafikeng

Stats SA also provides a subscription service.

Electronic services

A large range of data are available via on-line services, diskette and computer printouts. For more details about our electronic data, contact user information services.

You can visit us on the Internet at: www.statssa.gov.za

Enquiries

Telephone: (012) 310 8600/ 8390/ 8351/ 4892/ 8496/ 8095 (user information services)
(012) 310 8384 (technical enquiries)
(012) 310 8161 (orders)
(012) 310 4883/4885/8018 (library)

Fax: (012) 310 8500/ 8495 (user information services)
(012) 310 6937 (technical enquiries)

Email: kennethma@statssa.gov.za (technical enquiries)
info@statssa.gov.za (user information services)
distribution@statssa.gov.za (orders)

Postal address: Private Bag X44, Pretoria, 0001

Produced by Stats SA