

SENTRALE
STATISTIEKDIENS
CENTRAL
STATISTICAL SERVICE

**STATISTIESE NUUSBERIG
STATISTICAL NEWS RELEASE**

P0351

TOERISME EN MIGRASIE: OKTOBER 1990

TOURISM AND MIGRATION: OCTOBER 1990

13 DESEMBER/DECEMBER 1990

SUMMARY

The net result of immigration and emigration shows a gain of 12 354 persons during January to October 1990 compared with a gain of 9 232 persons during the same period in 1989.

Foreign visitors who arrived in the RSA during January 1990 to October 1990 increased by 12,5% compared with the same period of 1989. During October 1990, 38,0% of the foreign visitors were resident in Europe and 13,6% in other overseas countries, while 48,4% were resident in Africa. Of the 33 222 visitors from Europe, 33,9% were resident in the United Kingdom and 27,4% in West Germany, while 71,3% of the visitors from the Americas were resident in the USA.

South African residents who went abroad during January to October 1990 increased by 14,5% compared with the same period in 1989.

OPSOMMING

Die netto resultaat van immigrasie en emigrasie toon 'n wins van 12 354 persone gedurende Januarie tot Oktober 1990 teenoor 'n wins van 9 232 persone gedurende dieselfde tydperk in 1989.

Vreemde besoekers wat in die RSA aangekom het, het gedurende Januarie 1990 tot Oktober 1990 met 12,5% toegeneem teenoor dieselfde tydperk van 1989. Gedurende Oktober 1990 was 38,0% van die vreemde besoekers woonagtig in Europa en 13,6% in ander oorsese lande, terwyl 48,4% in Afrika woonagtig was. Van die 33 222 besoekers uit Europa was 33,9% woonagtig in die Verenigde Koninkryk en 27,4% in Wes-Duitsland, terwyl 71,3% van die besoekers uit die Amerikas in die USA woonagtig was.

Suid-Afrikaanse besoekers wat na die buiteland vertrek het, het gedurende Januarie tot Oktober 1990 met 14,5% toegeneem teenoor dieselfde tydperk in 1989.

Qmt
 HEAD: CENTRAL STATISTICAL SERVICE
 HOOF: SENTRALE STATISTIEKDIENS

ENQUIRIES:		NAVRAE:	
PRETORIA	Tel. (012) 310-8911 Private Bag X44, Pretoria, 0001 Fax: 3108500 3108501 3108502 3108503	PRETORIA	Tel. (012) 310-8911 Privaatsak X44, Pretoria, 0001 Faks: 3108500 3108501 3108502 3108503
BLOEMFONTEIN	(051) 477767	KEMPTON PARK	(011) 3943420/1
DURBAN	(031) 3053904	KIMBERLEY	(0531) 33965
CAPE TOWN/KAAPSTAD	(021) 4616940	KLERKSDORP	(018) 24008
		NELSPRUIT	(01311) 52455/6
		PIETERSBURG	(01521) 71609
		PORT ELIZABETH	(041) 523801/2

EXPLANATORY NOTES

TABLES 2.2.1 AND 2.2.2

1. As from 1 January 1987 occupations are classified according to the Standard Classification of Occupations, First Edition, 1986.
2. Comparable data for 1986 and previous years are consequently not available for the following occupations:
 - Agricultural engineer
 - Industrial/production engineer
 - Medical specialist
 - Artisan, apprentice and related occupations
- 2.1 Agricultural and industrial/production engineer were previously included in the occupation "engineer, not elsewhere classified".
- 2.2 Medical specialist was previously included in the occupation "medical practitioner".
- 2.3 Artisan, apprentice and related occupations were previously classified with subgroup "production foreman and supervisor, miner and quarry worker, operator, production and related worker".

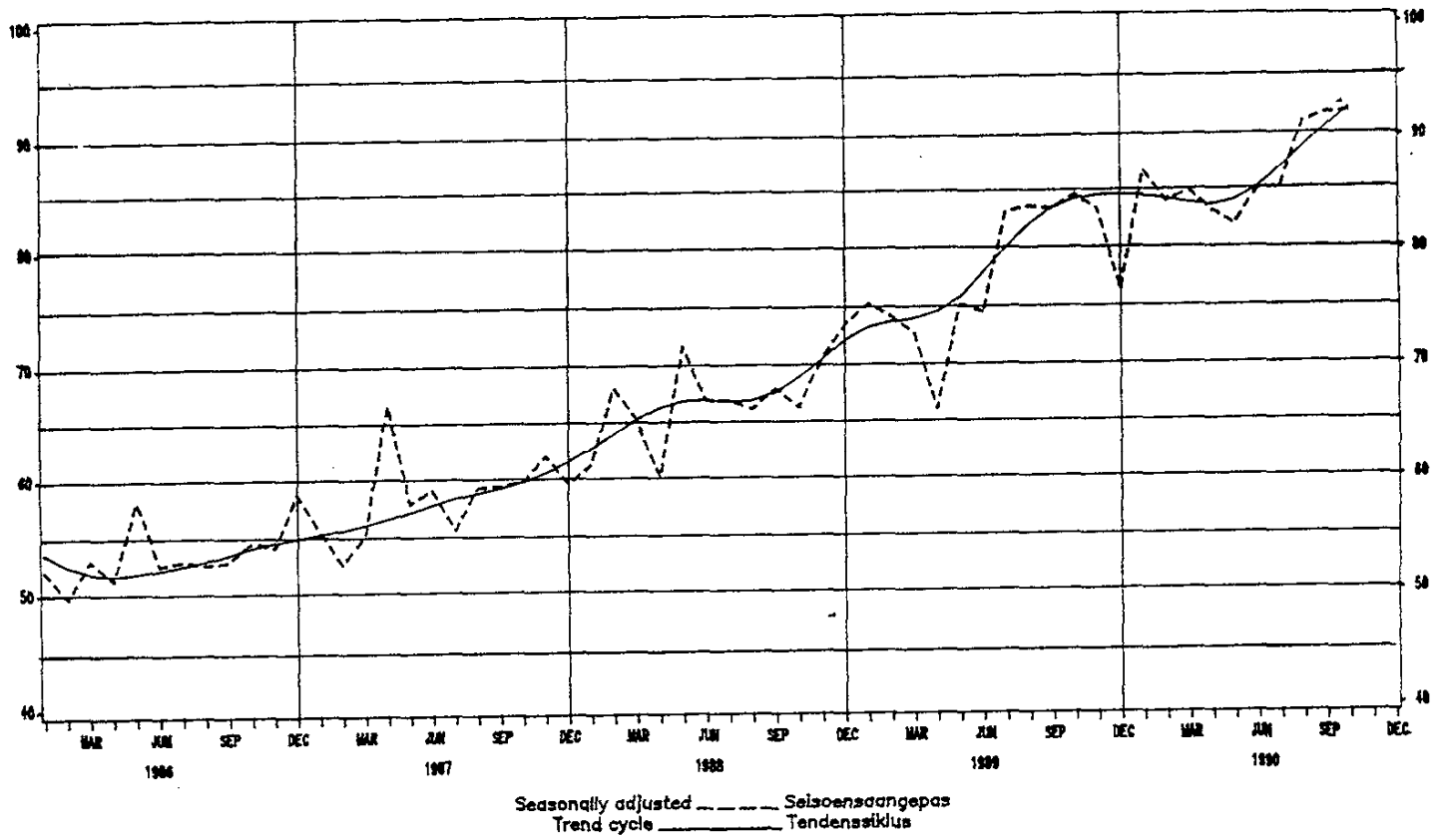
VERDUIDELIKENDE OPMERKINGS

TABELLE 2.2.1 EN 2.2.2

1. Vanaf 1 Januarie 1987 word beroepe geklassifiseer volgens die standaard-beroepsklassifikasie, Eerste uitgawe, 1986.
2. Vergelykbare gegewens vir 1986 en vroeër jare is gevolglik nie beskikbaar vir die volgende beroepe nie:
 - Landbou-ingenieur
 - Bedryfs-/produksie ingenieur
 - Mediese spesialis
 - Ambagsman-, vakleerling- en verwante beroepe
- 2.1 Landbou- en bedryf/produksie-ingenieur is voorheen by die beroep "ingenieur, nie elders geklassifiseer", ingedeel.
- 2.2 Mediese spesialis is voorheen by die beroep "mediese praktisyn" ingedeel.
- 2.3 Ambagsman-, vakleerling- en verwante beroepe is voorheen by subgroep "produksievoorman en -toesighouer, myn- en steengroefwerker, operateur, produksie- en verwante werker" geklassifiseer.

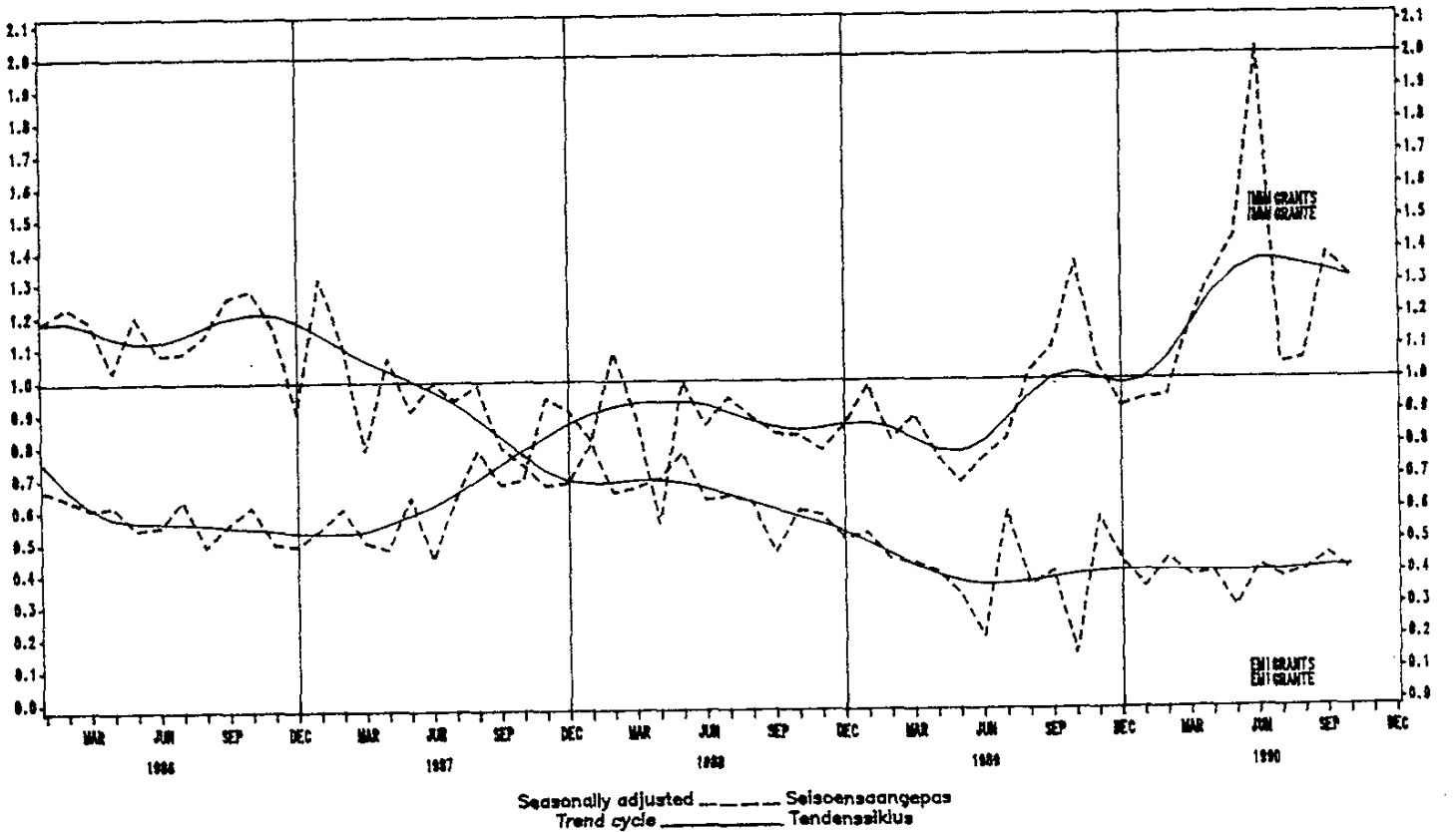
FOREIGN VISITORS : ARRIVALS
THOUSAND

VREEMDE BESOEKERS : AANKOMS
DUISEND



IMMIGRANTS AND EMIGRANTS
THOUSAND

IMMIGRANTE EN EMIGRANTE
DUISEND



1. TOURISM
 1.1 Arrivals and departures of foreign visitors and South African residents
 1.1.1 Purpose of visit

Purpose of visit	October/Okttober		Jan. - Oct./Okt.		Year - Jaar	
	1990	1989	1990	1989	1989	1988
(a) ARRIVALS: GRAND TOTAL	151 084	138 549	1 363 701	1 234 790	1 513 822	1 513 822
(i) Foreign visitors - Total	87 355	80 969	823 285	731 559	930 393	930 393
: Actual data	92 074	84 797	163 768	152 243	179 269	179 269
: Seasonally adjusted data	17 584	17 126	644 703	563 471	734 493	734 493
: Business	68 245	62 556	14 814	15 845	16 631	16 631
: Holiday, including persons in transit	1 526	1 287	540 416	503 231	583 429	583 429
(ii) South African residents returning	63 729	57 580				
(b) DEPARTURES: GRAND TOTAL	132 155	116 989	1 362 935	1 187 153	1 464 398	1 464 398
(i) Foreign visitors - Total	82 080	73 674	844 018	733 994	895 822	895 822
(ii) South African residents departing temporarily -	50 075	43 315	518 917	453 159	568 576	568 576
: Total	15 630	14 511	141 397	126 757	146 831	146 831
: Business	34 122	28 440	372 727	320 893	415 686	415 686
: Holiday	323	364	4 793	5 509	6 059	6 059
: Study						

Doel van besoek

(a) AANKOMS: GROOTTOTAAL
 (i) Vreemde besoekers - Totaal
 : Werklike gegewens
 : Seisoensaangepaste gegewens
 : Besigheid
 : Vakansie, insluitende deurgaande reisigers
 (ii) terugkerende Suid-Afrikaanse inwoners

(b) VERTREK: GROOTTOTAAL
 (i) Vreemde besoekers
 (ii) Suid-Afrikaanse inwoners wat tydelik vertrek -
 : Totaal
 : Besigheid
 : Vakansie
 : Studie

1. TOURISM
 1.1 Arrivals and departures of foreign visitors and South African residents
 1.1.2 Mode of travel

Arrivals and departures	Mode of travel - Wyse van reis			
	Total Totaal	Air-Lug	Rail-Spoor	Road-Pad Sea-See
(a) ARRIVALS:		October/Okttober 1990		
(i) Foreign visitors	151 084	96 592	282	53 240
(ii) South African residents	87 355	49 027	208	37 440
	63 729	47 565	74	15 800
(b) DEPARTURES:		October/Okttober 1990		
(i) Foreign visitors	132 155	76 840	627	53 619
(ii) South African residents	82 080	41 642	482	39 207
	50 075	35 198	145	14 412

Aankoms en vertrek

(a) AANKOMS:
 (i) Vreemde besoekers
 (ii) Suid-Afrikaanse inwoners

(b) VERTREK:
 (i) Vreemde besoekers
 (ii) Suid-Afrikaanse inwoners

.. Not applicable/Nie van toepassing nie

1. TOURISME
1.2 Vreemde besoekers
1.2.1 Aankoms volgens land van verblyf en wyse van reis

1. TOURISM
1.2 Foreign visitors
1.2.1 Arrivals by country of residence and mode of travel

Country	Foreign visitors - Vreemde besoekers										Land
	October/Oktober		Mode of travel - wyse van reis				Jan. - Oct./Okt.				
	1989	1990	Air Lug	Raft Spoor	Road Pad	Sea See	1989	1990			
GRAND TOTAL	80 969	87 355	49 027	208	37 440	680	731 559	823 285	GROOTTOTAAL		
AFRIKA:									AFRIKA:		
Botswana	37 626	42 266	10 817	192	31 199	58	367 471	433 159	Botswana		
Kenya	4 910	5 291	1 324	3	3 953	11	50 643	58 137	Kenya		
Lesotho	3 136	3 121	386	..	2 720	..	1 013	1 137	Lesotho		
Malawi	1 422	1 589	940	..	648	..	30 346	30 617	Malawi		
Mauritius	1 357	2 425	402	..	23	..	12 548	15 669	Mauritius		
Mozambique	8 554	2 227	1 335	..	892	..	3 747	4 161	Mozambique		
Swaziland	1 196	4 946	1 517	..	4	..	14 286	19 814	Swaziland		
Zambia	14 375	20 306	3 307	2	1 145	4	60 550	61 052	Zambia		
Zimbabwe	2 235	2 550	1 353	185	16 812	2	162 484	201 494	Zimbabwe		
Other	4 383	4 891	4 003	..	1 172	39	20 016	26 360	Ander		
ASIA:									ASIE:		
Hong Kong	1 165	1 190	4 003	..	650	238	40 848	44 517	Hong-Kong		
India	1 637	1 462	1 195	..	33	46	1 420	1 757	Indie		
Israel	507	610	579	..	264	3	14 184	12 306	Israel		
Japan	1 339	1 560	1 272	..	11	20	4 773	5 171	Japan		
Korea	507	708	551	..	23	14	675	752	Korea		
Republic of China	5 381	5 200	4 547	2	56	53	13 118	15 159	Republiek van Sjina		
Other	122	99	88	..	10	101	4 961	6 878	Ander		
AMERICAS:									AMERIKAS:		
Argentina	199	255	243	..	9	25	51 582	55 181	Argentinië		
Brazil	913	902	783	2	117	3	2 387	2 566	Brasilië		
Canada	86	53	43	..	9	..	8 046	9 215	Kanada		
Chile	16	41	40	1	1	Chile		
Colombia	19	12	12	163	169	Colombia		
Mexico	5	22	21	..	1	..	176	180	Mexico		
Paraguay	17	14	13	..	1	..	129	125	Paraguay		
Peru	33	17	17	113	115	Peru		
Uruguay	3 881	3 708	3 221	..	470	17	38 026	258 656	Uruguay		
USA	14	17	14	..	3	..	213	188	USA		
Venezuela	76	60	52	0	6	..	386	385	Venezuela		
Other	Ander		

1. TOURISME
 1.2 Vreemde besoekers
 1.2.1 Aankoms volgens land van verblyf
 en wyse van reis (afgesluit)

1. TOURISM
 1.2 Foreign visitors
 1.2.1 Arrivals by country of residence
 and mode of travel (concluded)

Country	Foreign visitors - Vreemde besoekers									
	October/Oktober		Mode of travel - Wyse van reis				Jan. - Oct./Okt.			
	1989	1990	Air Lug	Rail Spoor	Road Pad	Sea See	1989	1990	1989	1990
EUROPE:	31 960	33 222	28 292	12	4 567	351	253 587	272 010		
Austria	1 292	1 380	1 149	..	228	3	7 061	7 591		
Belgium	1 156	1 311	1 050	..	256	3	8 031	8 729		
Denmark	1 158	1 195	1 153	..	35	7	1 414	1 525		
Finland	1 118	1 184	1 171	..	12	1	1 857	1 264		
France	1 566	1 737	1 494	..	232	11	14 004	16 900		
Greece	319	280	229	..	10	41	3 601	3 467		
Ireland	331	332	283	..	48	1	3 223	3 551		
Italy	907	1 144	1 030	..	96	18	12 297	12 506		
Luxembourg	47	52	44	..	8	..	328	419		
Netherlands	1 436	1 733	1 508	..	216	9	11 437	12 794		
Norway	118	152	100	..	26	26	7 966	1 159		
Portugal	858	620	575	..	40	5	7 498	6 717		
Spain	559	493	437	..	25	31	4 763	4 039		
Sweden	196	197	157	..	34	6	1 795	1 882		
Switzerland	2 231	2 218	1 922	..	295	6	13 802	14 917		
UK	10 841	11 263	10 074	..	1 106	75	96 772	103 396		
West Germany	9 534	9 092	7 169	..	1 874	47	61 899	66 031		
Other	293	839	747	..	26	66	3 839	5 123		
OCEANIA:	1 488	1 639	1 308	..	324	5	14 762	17 194		
Australia	1 218	1 388	1 148	..	233	5	12 013	14 179		
New Zealand	265	247	157	..	90	..	2 720	2 977		
Other	5	4	3	..	1	0	29	38		
UNSPECIFIED	131	137	60	..	74	3	3 309	1 224		

1. TOURISM
 1.3 South African residents
 1.3.1 Departures by country of destination and mode of travel

Country	South African residents - Suid-Afrikaanse inwoners									
	October/Oktobor		Mode of travel - Wyse van reis				Jan. - Oct./Okt.		Land	
	1989	1990	Air Lug	Rail Spoor	Road Pad	Sea See	1989	1990		
GRAND TOTAL	43 315	50 075	35 198	145	14 412	320	453 159	518 917	AFRIKA:	
AFRICA:									Botswana	260 386
Botswana	24 659	28 842	14 224	145	14 362	111	216 822	260 386	Kenia	44 477
Kenya	3 840	4 974	2 936	9	2 029	..	32 403	44 477	Lesotho	558
Lesotho	34	72	72	578	558	Malawi	11 339
Malawi	1 075	1 225	239	..	986	..	10 788	11 339	Mauritius	8 040
Mauritius	3 554	3 473	706	1	28	5	7 965	8 040	Mozambique	30 173
Mozambique	1 148	1 356	3 473	26	29 009	30 173	Swaziland	13 176
Swaziland	4 351	4 153	1 224	..	106	..	9 830	13 176	Zambia	40 456
Zambia	413	463	1 707	..	3 446	..	42 076	40 456	Zimbabwe	4 621
Zimbabwe	7 358	10 513	432	135	7 570	..	68 482	94 634	Ander	12 912
Other	2 129	1 873	1 627	0	166	80	12 044	12 912	ASIE:	
ASIA:									Hong-Kong	35 059
Hong Kong	2 803	3 134	3 126	..	3	5	34 606	35 059	Indie	5 232
Indie	583	677	677	5 843	5 232	Israel	2 008
Israel	214	188	188	2 367	2 008	Japan	11 955
Japan	865	1 081	1 079	..	2	4	11 814	11 955	Korea	85
Japan	217	118	114	1 124	913	Republiek van Sjina	5 820
Korea	6	10	10	60	85	Ander	9 046
Republiek van Sjina	624	799	798	..	1	0	4 750	5 820	AMERIKAS:	
Other	294	261	260	8 648	9 046	Argentinië	19 446
AMERICAS:									Brazilië	5 193
Argentina	1 931	2 422	2 412	..	4	6	18 742	19 446	Kanada	5 374
Brazil	12	147	147	4 373	5 193	Chille	1 226
Brazil	695	915	915	1 424	1 226	Columbia	15
Canada	97	96	96	1	15	Mexico	13
Chile	25	32	32	13	Paraguay	41
Columbia	41	Peru	10
Mexico	10	Venezuela	17
Paraguay	3	3	3	..	1	17	VSA	12 119
Peru	1	1	12 119	Ander	86
Venezuela	1 085	1 220	1 211	..	3	6	12 358	12 119		
USA	13	6	6	..	0	0	107	86		
Other	13	6	6	..	0	0	107	86		

1. TOERISME

1.3 Suid-Afrikaanse inwoners
1.3.1 Vertrek volgens land van bestemming
en wyse van reis (afgesluit)1. TOURISM
1.3 South African residents
Departures by country of destination
and mode of travel (concluded)

South African residents - Suid-Afrikaanse inwoners

Country	October/Okttober		Mode of travel - Wyse van reis				Jan. - Oct./Okt.		Land
	1989	1990	October/Okttober		1990		1989	1990	
			Air Lug	Rail Spoor	Road Pad	Sea See			
EUROPE:	13 149	15 004	14 953	..	12	39	169 998	196 011	EUROPA:
Austria	83	101	101	1 882	2 059	Oostenryk
Belgium	391	481	472	4 307	5 275	Belgie
France	653	579	579	7 153	8 713	Frankryk
Greece	550	620	620	10 116	11 490	Griekeland
Italy	686	753	753	8 820	9 854	Italië
Luxembourg	174	235	235	2 839	3 903	Luxemburg
Netherlands	536	726	726	7 259	8 868	Nederland
Portugal	1 116	1 523	1 521	..	2	..	15 533	20 756	Portugal
Spain	62	58	58	777	730	Spanje
Switzerland	880	867	866	..	1	..	10 092	10 476	Switserland
UK	5 769	6 851	6 821	..	4	26	76 645	85 847	VK
West Germany	2 149	2 073	2 070	..	1	2	23 035	25 585	Wes-Duitsland
Other	100	137	131	..	4	11	1 540	2 455	Ander
OCEANIA:	297	300	296	..	3	1	3 505	3 589	OSEANIE:
Australia	266	276	272	..	3	1	3 133	3 219	Australië
New Zealand	31	24	24	365	367	Nieu-Seeland
Other	0	0	0	..	0	..	7	3	Ander
UNSPECIFIED	476	373	187	..	28	158	9 486	4 426	ONGESPESIFISEERD

2. MIGRASIE

2.1 Immigrante en emigrante
2.1.1 Summary table

Immigrants and emigrants	October/Okttober		Jan. - Oct./Okt.		Year - Jaar	
	1990	1989	1990	1989	1989	1989
(a) IMMIGRANTS: GRAND TOTAL	1 367	1 417	12 354	9 232	11 270	..
. Actual data	1 319	1 364
. Seasonally adjusted data	462	416	3 914	3 088	3 798	..
(i) Persons who arrived as approved immigrants	905	1 001	8 440	6 144	7 472	..
(ii) Persons who after arrival as visitors were approved as immigrants	329	120	3 971	3 991	4 911	..
(b) EMIGRANTS	403	146
. Actual data
. Seasonally adjusted data
(c) NET GAIN/LOSS	+1 038	+1 297	+8 383	+5 241	+6 359	..

Immigrante en emigrante

(a) IMMIGRANTE: GROOTTOJAAL

. Werklike gegewens

. Seisoensaangepaste gegewens

(i) Persone wat as goedgekeurde
immigrante aangekom het(ii) Persone wat na aankoms as
besoekers goedgekeur is as
immigrante

(b) EMIGRANTE

. Werklike gegewens

. Seisoensaangepaste gegewens

(c) NETTO AANWINS/VERLIES

2. MIGRATIE 10351
 2.1 Immigrante en emigrante
 2.1.2 Wyse van reis

Immigrante en emigrante	Wyses van reis			
	Air-Lug	Rail-Spoor	Road-Pad	Sea-See
(a) Immigrante 1/	462	446	16	..
(b) Emigrante	329	305	20	4

1/ Not applicable/Nie van toepassing nie
 1/ persons who applied as approved immigrants/Persone wat as goedgekeurde immigrante aangekom het.

2. MIGRATIE
 2.2 Migrante volgens beroepe
 2.2.1 Immigrante

Occupations	October/Oktober		Jan - Oct /Dkt.		Year - Jaar	
	1989	1989	1990	1989	1989	1989
GRAND TOTAL	1 367	1 417	12 354	9 232	11 270	5 083
TOTAL - ECONOMICALLY ACTIVE	701	700	5 791	4 154	5 083	..
Professional, semi-professional and technical occupations - Total	178	175	1 592	1 137	1 410	..
Engineers and related technologists	45	37	492	296	380	..
Industrial/Production	1	5	20	20	23	..
Chemical	1	1	112	75	109	..
Electrical and related	1	1	3	2	2	..
Agricultural	4	6	64	34	46	..
Mechanical	1	..	3	7	8	..
Metallurgical	1	..	10	14	14	..
Mining	1	5	84	30	36	..
Civil and related	23	2	188	107	124	..
Engineers and related	17	5	100	47	56	..
Medical practitioner	9	12	15	..
Dental professions	9	4	14	..
Education and related occupations	16	12	114	78	108	..
Accountant and related accounting occupations	10	10	91	73	85	..
Other	80	106	777	624	764	..
Managerial, executive and administrative occupations	71	95	711	562	693	..
Clerical and sales occupations	227	181	1 632	1 064	1 324	..
Transport, delivery and communications occupations	5	5	38	23	30	..
Service occupations	26	22	225	155	188	..
Farming and related occupations	7	11	67	52	58	..
Artisans, apprentice and related occupations	126	135	1 012	668	829	..
Production foreman and supervisor, miner and quarry worker, operator, production and related worker	36	23	250	164	196	..
Occupation unspecified and n.e.c.	25	53	264	329	365	..
TOTAL - NOT ECONOMICALLY ACTIVE	666	717	6 563	5 078	6 177	..
House-keeping	252	278	2 601	1 981	2 424	..
Child - not scholar	116	107	961	1 755	929	..
Scholar/Student	209	219	1 999	1 464	1 754	..
Retired/Disabled	1	2	163	101	101	..
Personnel	82	109	824	770	960	..
Not economically active n.e.c.	4	2	15	7	9	..

Professional, semi-professionele en tegniese beroepe - Totaal
 Ingenieurs- en verwante tegniese bedryf/Produksie
 Chemie
 Elektrisies en verwant
 Landbou
 Meganies/Werktuigkundig
 Metaalurgies
 Mynbou
 Siviel en verwant
 Ingenieurs skilsoed.
 Mediese spesialis
 Landboukundige beroepe
 Onderwys- en verwante beroepe
 Rekenmeester- en verwante rekenkundige beroepe
 Ander
 Bestuurs-, uitvoerende en administratiewe beroepe
 Klerklike en verkoopberoepe
 Vervoer-, aflewering- en kommunikasieberoepe
 Diensberoepe
 Boerdery- en verwante beroepe
 Ambagsman-, vakleerling- en verwante beroepe
 Produksteurman en -toetsinghouer, myn- en steengroefwerker, operateur, produksie- en verwante werker
 Beroep ongespesifiseerd en n.e.g.
TOTAAL - NIE-EKONOMIESE BEDRYWIG
 Tuisteskepper
 Kind - nie-skooller
 Skooller/Student
 Arbeidsongeskepte
 Pensioenarij
 Nie-ekonomiese bedrywig n.e.g.

2. MIGRATION
2.2 Migrants by occupations
2.2.2 Emigrants

2. MIGRASIE
2.2 Migrants volgens beroepe
2.2.2 Emigrante

Occupations	October/Oktober		Jan. - Oct./Okt.		Year - Jaar	
	1989		1989		1989	
	1990	1989	1990	1989	1990	1989
GRAND TOTAL	329	120	3 971	3 991	4 911	
TOTAL - ECONOMICALLY ACTIVE	177	74	2 073	1 869	2 372	
Professional, semi-professional and technical occupations - total	66	11	833	838	1 043	
Engineers and related technologists	11	2	187	195	229	
Industrial/Production	1	..	6	8	12	
Chemical	1	..	8	8	9	
Electrical and related	1	..	40	40	53	
Agricultural	4	0	0	
Mechanical	..	1	7	11	12	
Metallurgical	0	0	
Mining	5	8	
Civil and related	3	..	28	19	24	
Engineers n.e.c.	5	1	87	100	111	
Medical practitioner	1	1	18	31	32	
Medical specialist	1	..	7	4	4	
Dental professions	2	4	
Education and related occupations	10	2	137	111	153	
Accountant and related accounting occupations	8	1	55	87	111	
Other	35	5	429	408	510	
Managerial, executive and administrative occupations	18	10	203	170	217	
Clerical and sales occupations	39	7	464	379	498	
Transport, delivery and communications occupations	..	4	16	14	18	
Service occupations	7	1	52	42	53	
Farming and related occupations	8	13	18	
Artisans, apprentice and related occupations	39	11	319	218	288	
Production foreman and supervisor, miner and quarry worker, operator, production and related worker	3	..	73	34	49	
Occupation unspecified and n.e.c.	5	4	105	161	188	
TOTAL - NOT ECONOMICALLY ACTIVE	152	72	1 898	2 122	2 539	
House-keeping	75	28	937	722	904	
Child - not scholar	18	13	159	498	609	
Scholar/student	38	21	530	652	743	
Labour disabled	3	1	3	
Pensioner	20	10	268	239	266	
Not economically active n.e.c.	1	..	1	10	14	
GROOTTOTAAL						
TOTAAL - EKONOMIES BEDRYWIG						
Professionele, semi-professionele en tegniese beroepe - totaal						
Ingenieurs- en verwante tegnoloe Bedryf/Produksie						
Chemies						
Elektries en verwant						
Landbou						
Meganies/werktuigkundig						
Metallurgies						
Mynbou						
Siviel en verwant						
Ingenieurs n.e.g.						
Mediese praktisyen						
Mediese spesialists						
Tandheelkundige beroepe						
Onderwys- en verwante beroepe						
Rekenmeester- en verwante rekeningskundige beroepe						
Ander						
Bestuurs-, uitvoerende en administratiewe beroepe						
Klerklike en verkoopsberoepe						
Vervoer-, aflewering- en kommunikasieberoepe						
Diensberoepe						
Boerdery- en verwante beroepe						
Ambagsman-, vakleerling- en verwante beroepe						
Produksievoorman en -toesighouer, myn- en steengroefwerker, operateur, produksie- en verwante werker						
Beroep ongespesifiseerd en n.e.g.						
TOTAAL - NIE-EKONOMIES BEDRYWIG						
Tuisteskepper						
Kind - nie-skolier						
Skolier/student						
Arbeidsongeskikte						
Pensionaris						
Nie-ekonomies bedrywig n.e.g.						

2. MIGRATION
 2.3 Immigrants by country of previous permanent residence and emigrants by country of destination and citizenship

Country	Migration - Migrasie						Land				
	Immigrants Emigrante			Emigrants Emigrante							
	Destination Bestemming		Citizenship Burgerskap	Destination Bestemming		Citizenship Burgerskap					
Oct./Okt. 1990	Jan. - 1989	Oct./Okt. 1990		Jan. - 1989	Oct./Okt. 1990		Jan. - 1989				
GRAND TOTAL	1 367	9 232	12 354	329	3 991	3 971	329	3 991	3 971	3 971	3 971
AFRIKA:											
Botswana	228	2 525	2 667	22	187	249	175	2 033	1 956	1 956	1 956
Kenya	5	88	68	..	4	9
Lesotho	3	5	16
Malawi	17	104	147
Mauritius	15	55	82	..	10	11	..	3
Mozambique	11	45	78	1	21	8	..	12	7	7	7
RSA	8	64	79	..	2	3	4	4	4
Swaziland	..	98	91	160	1 934	1 839	1 839	1 839
Zambia	12	152	154	..	5	16
Zimbabwe	112	1 592	1 447	21	132	194	14	82	100	100	100
Other	38	322	505	0	12	5	1	0	2	2	2
ASIA:											
Hong Kong	279	1 077	2 320	10	82	81	1	15	22	22	22
India	16	31	97	5	3	16	..	0
Israel	30	104	127	..	1	58	..	10	19	19	19
Japan	58	437	806	..	64	1
Korea	1	8	6
Republic of China	2	2	15
Other	153	385	1 094
AMERICAS:											
Argentina	21	110	175	3	14	5	1	5	3	3	3
Brazil	104	486	710	37	547	528	4	74	48	48	48
Canada	14	20	75	..	2	2
Chile	4	48	69	34
Colombia	10	81	81	20	369	314	20	20	20
Mexico	8	19	61	..	2	1
Paraguay	1	1	5	..	0	0
Peru	..	0	8	..	0	0
Uruguay	3	10	17	..	0	0
Venezuela	1	11	5
USA	15	40	82	17
Other	47	251	295	17	172	214	4	37	28	28	28
	1	4	11	0	0	0	0	0	0	0	0

