



**Statistics  
South Africa**

Preferred supplier of quality statistics



# Statistical release

## P0351

# Tourism and Migration

**November 2009**

**Embargoed until:  
15 February 2010  
14:30**

**Enquiries:**

User Information Services  
Tel.: (012) 310 8600 / 4892 / 8390

**Forthcoming issue:**

December 2009

**Expected release date**

25 February 2010

Statistics South Africa • Mbalo-mbalo dza Afrika Tshipembe • Tinhlayo-tiko ta Afrika-Dzonga • Dipalopalo tsa Aforika Borwa • Ezezibalo zaseNingizimu Afrika  
Dipalopalo tša Afrika Borwa • Dipalopalo tsa Afrika Borwa • Ubalo lwaseMzantsi Afrika • Telubalo eNingizimu Afrika • iNanimbalo leSewula Afrika • Statistiek Suid-Afrika

**NOTICE**

**Statistics South Africa (Stats SA) has completed its Duration of Stay exercise as part of improving its information on foreign travellers and measurement of foreign tourists. As a result of this exercise, it is now possible to remove SAME DAY visitors and OVERNIGHT visitors (tourists) from the foreign arrivals data it receives from the Department of Home Affairs. This is based on the date on which the arrivals that entered the country for purposes other than work left. Stats SA started publishing information on TOURISTS as defined by United Nations World Tourism Organisation with the January 2009 data. In this month’s release, additional data (graphs and tables) are provided in the APPENDIX for the benefit of users who would like to continue using foreign arrivals (rather than tourists) as the base denominator for comparison and trend analysis purposes.**

**Contents**

**KEY FINDINGS**

**Page**

**1. Travellers**

1.1 Number of travellers .....	2
1.2 Mode of travel of travellers .....	2

**2. Tourists**

2.1 Mode of travel of tourists .....	2
2.2 Regional and national distribution of tourists.....	2
2.3 Purpose of visit of tourists.....	3
2.4 Sex and age distribution of tourists.....	3

**Figures**

1. Number of tourists from eight leading overseas countries in November 2009 .....	4
2. Number of tourists from eight leading SADC countries in November 2009 .....	4
3. Number of tourists from eight leading ‘other’ African countries in November 2009 .....	5

**Tables**

1. Number of South African residents and foreign travellers by travel direction, November 2009.....	6
2. Number of South African residents and foreign travellers by travel direction and mode of travel, November 2009 ...	7
3. Number of tourists by country of residence and mode of travel, November 2009 .....	8
4. Number of tourists by country of residence and purpose of visit, November 2009.....	12
5. Number of tourists from overseas, SADC and ‘other’ African regions by sex and age group, November 2009.....	16

**EXPLANATORY NOTES**

1. Introduction .....	17
2. Purpose of the statistical release .....	17
3. Scope and coverage.....	17
4. Data .....	17
5. Limitations .....	18
6. Definitions of terms.....	18
7. Symbols and abbreviations used .....	18

<b>GENERAL INFORMATION.....</b>	<b>19</b>
---------------------------------	-----------

<b>APPENDIX .....</b>	<b>20</b>
-----------------------	-----------

## KEY FINDINGS

### 1. Travellers

#### 1.1 Number of travellers

The routine data collected by the Department of Home Affairs' (DHA) immigration officers at the ports of entry into South Africa show that a total of 2 272 937 travellers (arrivals and departures) passed through South African ports of entry in November 2009. As presented in Table 1, these travellers are made up of 654 713 South African residents and 1 618 224 foreign travellers. A further breakdown of the figures indicates that there were 332 355 and 322 358 South African resident arrivals and departures respectively. The corresponding volumes for foreign arrivals and departures were 864 808 and 753 416 respectively. A comparison between the movements in October 2009 and November 2009 indicates that there was a decline in all movements. Thus, there was a decline of 11,1% from 373 807 in October 2009 to 332 355 in November 2009 for South African arrivals and a decline of 7,6% from 348 809 in October 2009 to 322 358 in November 2009 for South African departure. Foreign arrivals decreased by 2,8% from 889 529 in October 2009 to 864 808 in November 2009. A comparison between movements in November 2008 and November 2009 indicates that there was an increase in all movements. Foreign arrivals increased by 4,5% from 827 605 in November 2008 to 864 808 in November 2009. Detailed information on the departure of travellers is not available in the movement data. Data on the purpose of travel and the number of days South African travellers intend to spend or spent abroad are not collected by South Africa immigration officers. Hence, it is not possible to categorise them as tourists and non tourists. However, data are available on foreign arrivals for this categorisation. In November 2009, 30 754 (3,6%) foreign arrivals were classified as non-visitors while 834 054 (96,4%) were visitors. The visitors were categorised into three groups: arrivals only comprising of visitors who entered the country in November but did not depart in November (276 085); visitors who came in once and left (352 659); and those who came and left more than once in November (205 310). Visitors were further grouped as same day visitors 214 789 (25,8%) and overnight visitors / tourists 619 265 (74,3%).

#### 1.2 Mode of travel of travellers

Travellers who cross South Africa's borders rarely use trains and ships since they are mainly used for transporting goods. Data presented in Table 2 show that in November 2009, road transport was the most common mode of travel used by 1 545 153 (68,0%) out of the 2 272 937 travellers. The number of travellers who used air transport was 704 673 (31,0%). The arrival data on South African residents show that 123 969 (37,3%) came by air and 206 707 (62,2%) by road. For their departure, 125 529 (38,9%) and 196 513 (61,0%) used air and road transport respectively. In the case of foreign travellers, 228 829 (26,5%) arrived by air. Those who came by road were 616 585 (71,3%). When departing South Africa, 226 346 (30,0%) foreign travellers left by air whilst 525 348 (69,7%) left by road. As shown in Table 2 an overwhelming majority, 195 809 (91,2%) of same day visitors arrived in the country by road. Only 18 901 (8,8%) same-day visitors flew into the country. However, data on overnight visitors (tourists) show that, 417 461 (67,4%) used road transport whereas 200 566 (32,4%) came by air.

### 2. Tourists

#### 2.1 Mode of travel of tourists

The country of residence is used to categorise the tourists into their respective countries and regions. Information on the specific region and country of residence of the tourists and the mode of travel used to enter South Africa is provided in Table 3. In November 2009, a high proportion of overseas tourists arrived in the country by air 158 770 (87,3%) compared with those who came in by road 22 077 (12,1%). This is in contrast to tourists from SADC countries who came into South Africa predominantly by road 391 885 (93,1%) compared with 28 907 (6,9%) coming by air. A relatively high proportion 11 505 (82,7%) of tourists from 'other' African countries flew into the country while 2 349 (16,9%) used road transport.

#### 2.2 Regional and national distribution of tourists

In November 2009, overseas tourists came mainly from Europe, 128 471 (70,6%); followed by North America, 20 616 (11,3%); Asia, 16 936 (9,3%); Australasia, 8 336 (4,6%); Central and South America, 4 704 (2,6%); and Middle East, 2 860 (1,6%). Virtually all tourists from Africa came from the SADC countries, 420 898 (96,8%). The distribution of the remaining tourists from Africa is as follows: East and Central Africa, 7 073 (1,6%); West Africa, 5 791 (1,3%) and North Africa 1 042 (0,2%).

Data presented in Figure 1 indicate that UK, 40 505 (22,3%); Germany, 25 396 (14,0%); USA, 16 594 (9,1%); The Netherlands 13 641 (7,5%); France, 9 509 (5,2%); Australia, 6 886 (3,8%); Sweden, 5 053 (2,8%); and China, 4 328 (2,4%); were the eight leading overseas source countries. Tourists from these eight countries constitute 67,1% of all tourists from overseas countries.

The eight leading source countries in SADC (see Figure 2) were Zimbabwe, 117 651 (28,0%); Lesotho, 88 178 (21,0%); Mozambique, 80 084 (19,0%); Swaziland, 48 705 (11,6%); Botswana, 41 345 (9,8%); Zambia, 12 823 (3,1%); Namibia, 12 555 (3,0%) and Malawi, 10 888 (2,6%). Tourists from these eight countries constitute 98,1% of all tourists from SADC countries. The eight leading source countries from 'other' African countries, shown in Figure 3, were Nigeria, 3 579 (25,7%); Kenya, 2 286 (16,4%); Ethiopia, 1 229 (8,8%); Uganda, 1 101 (7,9%); Ghana, 1 036 (7,5%); Egypt, 484 (3,5); Somalia, 432 (3,1%); and Congo, 430 (3,1%). Tourists from these eight countries constitute 76,0% of all tourists from 'other' African countries.

### 2.3 Purpose of visit of tourists

As observed from data given in Table 4, in November 2009, an overwhelming majority (97,6%) of tourists came into South Africa for holidays compared with those who came to study (0,6%) and those on business (1,6%). A detailed analysis reveals that all the overseas regions had at least 92,0% of their tourists coming to South Africa for holidays. Tourists from Australasia (98,1%), Europe (97,6%), North America (97,2%), Central and South America (96,8%), Middle East (93,0%), and Asia (92,8%) were in South Africa for holidays. Tourists from Middle East and Asia were more diverse in their purpose. Middle East and Asia had 6,1% and 5,9% respectively of their tourists in South Africa for business. Furthermore, students made up 0,6% and 0,7% of Middle East and Asia tourists respectively.

Although the majority (98,0%) of African tourists came to South Africa for holidays, there are differences between tourists from SADC countries and those from 'other' African countries, namely:

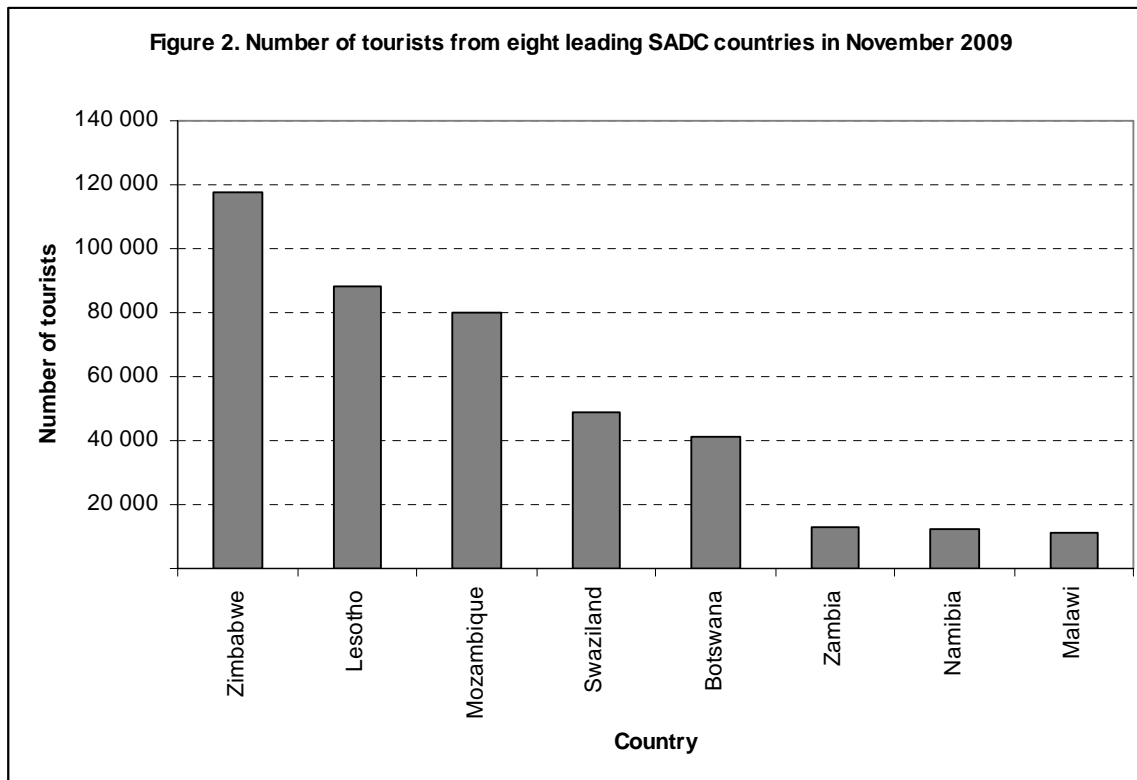
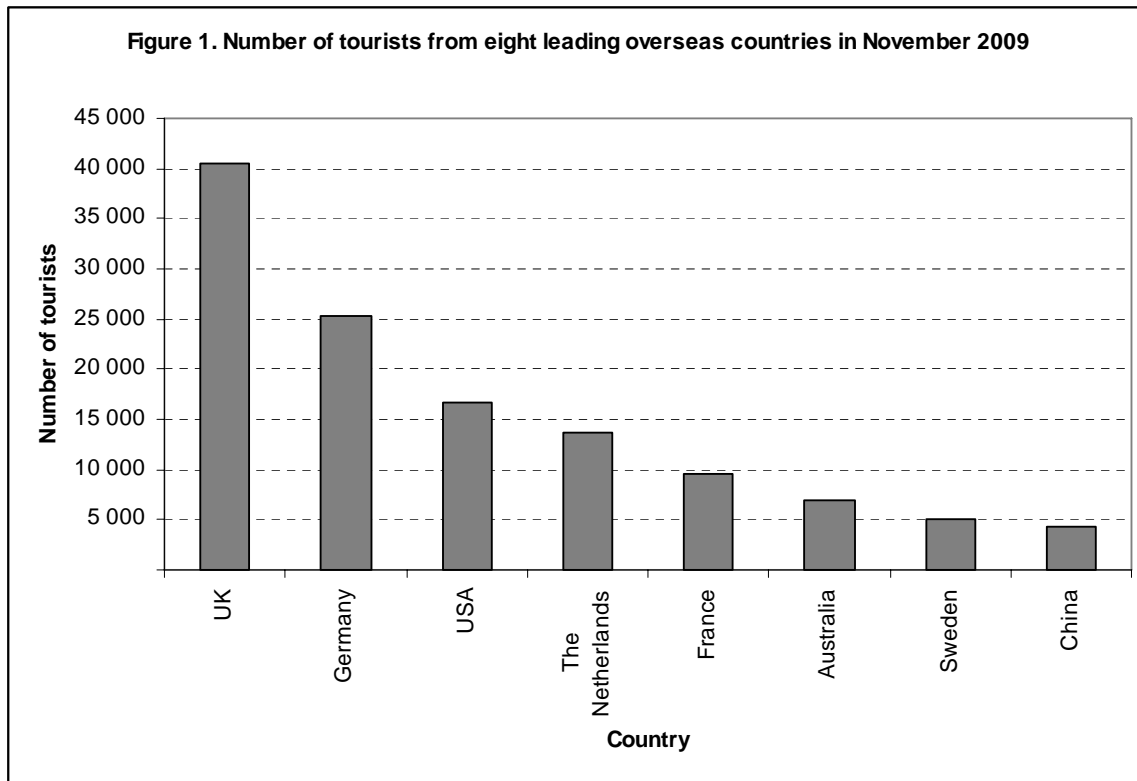
- Whereas 98,2% of tourists from the SADC countries were on holidays; 93,2% of tourists from 'other' African countries were on holidays. Proportionally, the lowest percentage (85,5%) of tourists on holidays were among those from North Africa, a region from where a relatively large percentage (12,4%) of tourists came for business.
- Overall, among tourists from North Africa, East and Central Africa and West Africa; 12,4%, 4,4% and 2,8% respectively were in South Africa for business compared with only 1,1% among the tourists from SADC countries.
- Similarly, 2,3%; 1,8% and 1,5% of tourists from; East and Central Africa; North Africa and West Africa respectively were students compared with only 0,6% among tourists from SADC countries.

### 2.4 Sex and age distribution of tourists

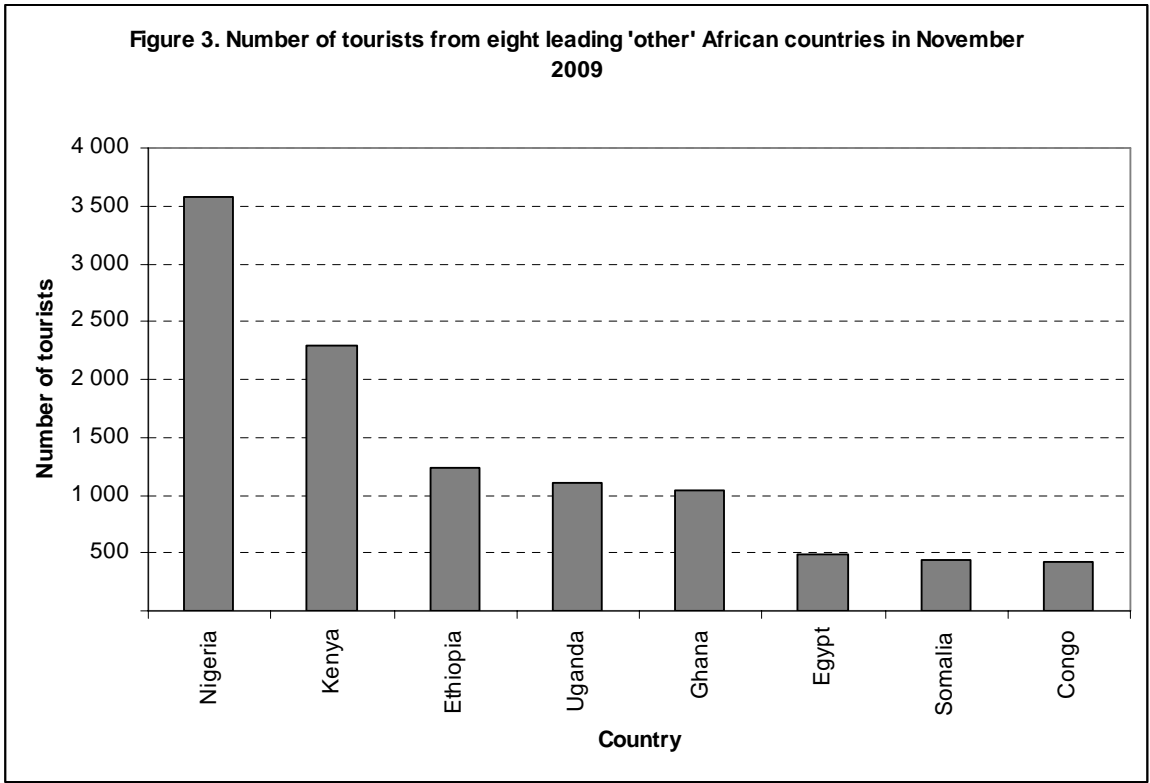
As presented in Table 5, in November 2009, there were 338 724 (54,7%) male and 279 786 (45,2%) female tourists. The overseas tourists were made up of 104 014 (57,2%) male tourists and 77 751 (42,7%) female tourists. Tourists from 'other' African countries had a high proportion (69,0%) of males compared with those from SADC (53,2%). The proportions of female tourists from 'other' African countries and SADC countries were 31,0% and 46,7% respectively.

The ages of the tourists were categorised into three broad groups, namely; under 15 years, 15 to 64 years, and 65 years and older. The overall results presented in Table 5 show that 90,5% of tourists were aged between 15 and 64 years; 4,1% aged less than 15 years and 5,4% aged 65 years and older. Taking the country of residence into consideration, the results further show that 83,6% of overseas tourists were aged 15 to 64 years compared to 93,3% and 95,2% of tourists from SADC and 'other' African countries respectively. There were very few tourists younger than 15 years and those aged 65 years and older. The data show relatively high proportions of older persons (i.e. 65 years and older) among overseas tourists, both males (12,4%) and females (13,9%). This is in contrast to tourists from SADC countries among which older persons comprised 1,9% of males and 2,6% of females. Among tourists from 'other' African countries, 1,7% of males and 1,7% of females were older persons.

**P J Lehohla**  
**Statistician-General**



**Figure 3. Number of tourists from eight leading 'other' African countries in November 2009**



**Table 1. Number of South African residents and foreign travellers by travel direction, November 2009**

Travel direction	November	October	November	% change	
	2008	2009	2009	November 08 – November 09	November 09 – November 09
<b>Grand Total</b>	<b>2 207 158</b>	<b>2 375 289</b>	<b>2 272 937</b>	3,0	-4,3
<b>South African residents</b>	<b>631 066</b>	<b>722 616</b>	<b>654 713</b>	3,7	-9,4
Arrivals	315 629	373 807	332 355	5,3	-11,1
Departures	315 437	348 809	322 358	2,2	-7,6
<b>Foreign travellers</b>	<b>1 576 092</b>	<b>1 652 673</b>	<b>1 618 224</b>	2,7	-2,1
Arrivals	827 605	889 529	864 808	4,5	-2,8
Departures	748 487	763 144	753 416	0,7	-1,3
<b>Foreign Arrivals</b>		<b>889 529</b>	<b>864 808</b>		-2,8
Non visitors		31 846	30 754		-3,4
Visitors		857 683	834 054		-2,8
<b>Visitors</b>		<b>857 683</b>	<b>834 054</b>		-2,8
Arrivals only		274 220	276 085		0,7
Single trips		360 235	352 659		-2,1
Multiple trips		223 228	205 310		-8,0
<b>Visitors</b>		<b>857 683</b>	<b>834 054</b>		-2,8
Same day		225 579	214 789		-4,8
Overnight (tourists)		632 104	619 265		-2,0

**Table 2. Number of South African residents and foreign travellers by travel direction and mode of travel, November 2009**

Travel direction	Total	Mode of travel								
		Air					Rail	Road	Sea	Unspecified
		Cape Town	Durban	OR Tambo	Other	TOTAL				
<b>Grand Total</b>	<b>2 272 937</b>	<b>146 885</b>	<b>12 563</b>	<b>538 321</b>	<b>6 904</b>	<b>704 673</b>	<b>4 121</b>	<b>1 545 153</b>	<b>395</b>	<b>18 595</b>
<b>South African residents</b>	<b>654 713</b>	<b>30 616</b>	<b>7 647</b>	<b>206 441</b>	<b>4 794</b>	<b>249 498</b>	<b>605</b>	<b>403 220</b>	<b>127</b>	<b>1 263</b>
Arrivals	332 355	16 364	3 865	101 425	2 315	123 969	344	206 707	74	1 261
Departures	322 358	14 252	3 782	105 016	2 479	125 529	261	196 513	53	2
<b>Foreign travellers</b>	<b>1 618 224</b>	<b>116 269</b>	<b>4 916</b>	<b>331 880</b>	<b>2 110</b>	<b>455 175</b>	<b>3 516</b>	<b>1 141 933</b>	<b>268</b>	<b>17 332</b>
Arrivals	864 808	58 033	2 534	167 196	1 066	228 829	1 945	616 585	128	17 321
Departures	753 416	58 236	2 382	164 684	1 044	226 346	1 571	525 348	140	11
<b>Visitors</b>	<b>834 054</b>	<b>56 478</b>	<b>2 356</b>	<b>159 769</b>	<b>864</b>	<b>219 467</b>	<b>714</b>	<b>613 270</b>	<b>126</b>	<b>477</b>
Same day	214 789	706	11	18 041	143	18 901	49	195 809	15	15
Overnight (Tourists)	619 265	55 772	2 345	141 728	721	200 566	665	417 461	111	462



**Table 3. Number of tourists by country of residence and mode of travel, November 2009**

Country	Mode of travel									
	Grand Total	Air					Rail	Road	Sea	Unspecified
		Cape Town	Durban	OR Tambo	Other	TOTAL				
<b>Grand Total</b>	<b>619 265</b>	<b>55 772</b>	<b>2 345</b>	<b>141 728</b>	<b>721</b>	<b>200 566</b>	<b>665</b>	<b>417 461</b>	<b>111</b>	<b>462</b>
<b>Overseas</b>	<b>181 923</b>	<b>53 718</b>	<b>2 101</b>	<b>102 503</b>	<b>448</b>	<b>158 770</b>	<b>529</b>	<b>22 077</b>	<b>99</b>	<b>448</b>
<b>Europe</b>	<b>128 471</b>	<b>45 559</b>	<b>1 487</b>	<b>63 365</b>	<b>247</b>	<b>110 658</b>	<b>403</b>	<b>17 200</b>	<b>52</b>	<b>158</b>
Austria	2 287	884	29	1 104	3	2 020	28	239	-	-
Belgium	4 237	1 047	5	2 223	32	3 307	2	923	-	5
Denmark	2 019	493	13	1 294	3	1 803	-	214	-	2
France	9 509	2 255	28	5 599	24	7 906	11	1 572	1	19
Germany	25 396	9 906	172	11 652	37	21 767	58	3 555	8	8
Ireland	3 522	1 994	36	1 242	3	3 275	4	243	-	-
Italy	3 527	1 084	66	1 975	15	3 140	23	358	-	6
Norway	2 097	899	2	954	1	1 856	-	241	-	-
Portugal	2 454	306	18	1 282	19	1 625	-	829	-	-
Spain	1 971	302	1	1 446	4	1 753	1	216	-	1
Sweden	5 053	1 757	1	2 537	2	4 297	3	750	-	3
Switzerland	4 043	1 113	54	2 235	9	3 411	76	551	-	5
The Netherlands	13 641	4 026	30	5 864	15	9 935	43	3 653	3	7
UK	40 505	17 020	940	19 196	67	37 223	146	3 035	8	93
Other	8 210	2 473	92	4 762	13	7 340	8	821	32	9
<b>North America</b>	<b>20 616</b>	<b>3 158</b>	<b>74</b>	<b>14 771</b>	<b>91</b>	<b>18 094</b>	<b>94</b>	<b>2 153</b>	<b>19</b>	<b>256</b>
Canada	4 015	900	36	2 526	18	3 480	12	468	12	43
USA	16 594	2 255	38	12 242	73	14 608	82	1 684	7	213
Other	7	3	-	3	-	6	-	1	-	-
<b>Central and South America</b>	<b>4 704</b>	<b>453</b>	<b>14</b>	<b>3 770</b>	<b>18</b>	<b>4 255</b>	<b>11</b>	<b>430</b>	<b>-</b>	<b>8</b>
Argentina	667	185	1	446	1	633	-	34	-	-
Brazil	2 705	82	12	2 356	15	2 465	3	236	-	1
Colombia	234	8	-	204	-	212	-	22	-	-
Other	1 098	178	1	764	2	945	8	138	-	7
<b>Australasia</b>	<b>8 336</b>	<b>1 105</b>	<b>100</b>	<b>6 485</b>	<b>35</b>	<b>7 725</b>	<b>12</b>	<b>567</b>	<b>14</b>	<b>18</b>
Australia	6 886	881	66	5 479	31	6 457	10	392	14	13

**Table 3. Number of tourists by country of residence and mode of travel, November 2009 (continued)**

Country	Mode of travel									
	Grand Total	Air					Rail	Road	Sea	Unspecified
		Cape Town	Durban	OR Tambo	Other	TOTAL				
New Zealand	1 394	216	34	974	4	1 228	2	159	-	5
Other	56	8	-	32	-	40	-	16	-	-
<b>Middle East</b>	<b>2 860</b>	<b>477</b>	<b>41</b>	<b>2 201</b>	<b>12</b>	<b>2 731</b>	<b>1</b>	<b>125</b>	<b>2</b>	<b>1</b>
Iran	319	31	27	254	-	312	1	6	-	-
Israel	1 247	84	-	1 089	-	1 173	-	73	-	1
Saudi Arabia	453	148	2	288	6	444	-	7	2	-
Other	841	214	12	570	6	802	-	39	-	-
<b>Asia</b>	<b>16 936</b>	<b>2 966</b>	<b>385</b>	<b>11 911</b>	<b>45</b>	<b>15 307</b>	<b>8</b>	<b>1 602</b>	<b>12</b>	<b>7</b>
China	4 328	586	9	3 562	12	4 169	-	157	1	1
Hong Kong	649	50	1	588	-	639	-	9	-	1
India	3 857	672	197	2 473	10	3 352	6	495	3	1
Japan	1 526	125	3	1 354	1	1 483	-	42	-	1
Korea	1 259	122	10	1 044	1	1 177	-	82	-	-
Malaysia	931	361	5	544	-	910	-	21	-	-
Pakistan	771	78	49	347	3	477	1	293	-	-
Singapore	792	350	5	419	-	774	-	17	-	1
Taiwan	762	179	21	423	1	624	-	138	-	-
Other	2 061	443	85	1 157	17	1 702	1	348	8	2
<b>Africa</b>	<b>434 804</b>	<b>1 942</b>	<b>242</b>	<b>37 964</b>	<b>264</b>	<b>40 412</b>	<b>132</b>	<b>394 234</b>	<b>12</b>	<b>14</b>
<b>SADC</b>	<b>420 898</b>	<b>1 698</b>	<b>228</b>	<b>26 762</b>	<b>219</b>	<b>28 907</b>	<b>87</b>	<b>391 885</b>	<b>8</b>	<b>11</b>
Angola	3 156	189	-	2 817	22	3 028	-	126	-	2
Botswana	41 345	17	3	1 821	71	1 912	81	39 351	-	1
DRC	2 743	2	1	1 935	10	1 948	-	792	-	3
Lesotho	88 178	4	-	483	1	488	-	87 689	1	-
Madagascar	206	1	-	193	-	194	1	11	-	-
Malawi	10 888	2	1	1 997	4	2 004	-	8 881	3	-
Mauritius	1 249	156	130	872	1	1 159	-	90	-	-
Mozambique	80 084	88	83	1 978	17	2 166	1	77 916	1	-
Namibia	12 555	1 167	-	2 207	20	3 394	-	9 159	2	-
Swaziland	48 705	4	1	520	22	547	3	48 154	-	1

**Table 3. Number of tourists by country of residence and mode of travel, November 2009 (continued)**

Country	Mode of travel									
	Grand Total	Air					Rail	Road	Sea	Unspecified
		Cape Town	Durban	OR Tambo	Other	TOTAL				
Tanzania	1 315	8	-	973	3	984	-	331	-	-
Zambia	12 823	10	-	4 248	7	4 265	-	8 555	1	2
Zimbabwe	117 651	50	9	6 718	41	6 818	1	110 830	-	2
<b>'Other' Africa</b>	<b>13 906</b>	<b>244</b>	<b>14</b>	<b>11 202</b>	<b>45</b>	<b>11 505</b>	<b>45</b>	<b>2 349</b>	<b>4</b>	<b>3</b>
<b>East and Central Africa</b>	<b>7 073</b>	<b>55</b>	<b>1</b>	<b>5 418</b>	<b>18</b>	<b>5 492</b>		<b>1 577</b>	<b>2</b>	<b>2</b>
Burundi	82	-	-	63	1	64	-	18	-	-
Cameroon	401	8	-	357	-	365	-	36	-	-
Central African Republic	12	-	-	10	-	10	-	2	-	-
Chad	25	-	-	24	1	25	-	-	-	-
Comoros	12	-	-	11	-	11	-	-	-	1
Congo	430	12	-	324	6	342	-	88	-	-
Djibouti	9	-	-	7	-	7	-	2	-	-
Equat Guinea	37	1	-	31	-	32	-	5	-	-
Eritrea	60	1	-	55	-	56	-	4	-	-
Ethiopia	1 229	3	1	680	4	688	-	538	2	1
Gabon	364	3	-	350	2	355	-	9	-	-
Kenya	2 286	15	-	1 998	3	2 016	-	270	-	-
Reunion	16	-	-	16	-	16	-	-	-	-
Rwanda	247	-	-	224	-	224	-	23	-	-
Sao Tome and Principe	19	1	-	14	-	15	-	4	-	-
Seychelles	310	3	-	301	-	304	-	6	-	-
Somalia	432	-	-	9	-	9	-	423	-	-
Tristan Da Cunha	1	-	-	1	-	1	-	-	-	-
Uganda	1 101	8	-	943	1	952	-	149	-	-
<b>West Africa</b>	<b>5 791</b>	<b>61</b>	<b>3</b>	<b>4 979</b>	<b>17</b>	<b>5 060</b>	<b>45</b>	<b>685</b>	<b>1</b>	<b>-</b>
Ascension	2	-	-	-	-	-	-	2	-	-
Benin	99	1	-	86	-	87	-	12	-	-
Burkina Faso	53	1	-	50	-	51	-	2	-	-
Cape Verde Island	40	2	-	32	3	37	-	3	-	-
Cote D'Ivoire	201	10	-	183	1	194	-	7	-	-
Gambia	56	2	-	48	-	50	-	6	-	-

**Table 3. Number of tourists by country of residence and mode of travel, November 2009 (concluded)**

Country	Mode of travel									
	Grand Total	Air					Rail	Road	Sea	Unspecified
		Cape Town	Durban	OR Tambo	Other	TOTAL				
Ghana	1 036	9	1	913	4	927	1	108	-	-
Guinea	135	-	-	77	1	78	-	57	-	-
Guinea-Bissau	21	-	-	12	-	12	-	9	-	-
Liberia	66	-	-	60	-	60	-	6	-	-
Madeira Islands	13	6	-	2	-	8	-	5	-	-
Mali	79	-	-	63	-	63	-	16	-	-
Mauritania	10	-	-	10	-	10	-	-	-	-
Niger	23	1	-	22	-	23	-	-	-	-
Nigeria	3 579	24	1	3 132	8	3 165	1	412	1	-
Saint Helena	48	2	-	3	-	5	41	2	-	-
Senegal	204	1	-	192	-	193	2	9	-	-
Sierra Leone	85	2	1	58	-	61	-	24	-	-
Togo	41	-	-	36	-	36	-	5	-	-
<b>North Africa</b>	<b>1 042</b>	<b>128</b>	<b>10</b>	<b>805</b>	<b>10</b>	<b>953</b>		<b>87</b>	<b>1</b>	<b>1</b>
Algeria	87	4	-	63	8	75	-	11	1	-
Egypt	484	46	5	419	-	470	-	14	-	-
Libya	78	8	-	52	2	62	-	16	-	-
Morocco	85	15	-	61	-	76	-	9	-	-
The Sudan	183	18	3	147	-	168	-	14	-	1
Tunisia	122	37	2	61	-	100	-	22	-	-
Western Sahara	3	-	-	2	-	2	-	1	-	-
<b>Unspecified</b>	<b>2 538</b>	<b>112</b>	<b>2</b>	<b>1 261</b>	<b>9</b>	<b>1 384</b>	<b>4</b>	<b>1 150</b>	<b>-</b>	<b>-</b>

**Table 4. Number of tourists by country of residence and purpose of visit, November 2009**

<b>Country</b>	<b>Grand Total</b>	<b>Business</b>	<b>Holiday</b>	<b>Study</b>	<b>Transit</b>
<b>Grand Total</b>	<b>619 265</b>	<b>9 932</b>	<b>604 550</b>	<b>3 870</b>	<b>913</b>
<b>Overseas</b>	<b>181 923</b>	<b>4 613</b>	<b>176 533</b>	<b>498</b>	<b>279</b>
<b>Europe</b>	<b>128 471</b>	<b>2 754</b>	<b>125 390</b>	<b>229</b>	<b>98</b>
Austria	2 287	40	2 245	2	-
Belgium	4 237	70	4 162	4	1
Denmark	2 019	58	1 959	1	1
France	9 509	186	9 297	23	3
Germany	25 396	416	24 915	55	10
Ireland	3 522	82	3 433	6	1
Italy	3 527	90	3 431	4	2
Norway	2 097	84	2 000	10	3
Portugal	2 454	35	2 411	4	4
Spain	1 971	34	1 928	2	7
Sweden	5 053	97	4 944	11	1
Switzerland	4 043	65	3 958	15	5
The Netherlands	13 641	208	13 401	24	8
UK	40 505	1 046	39 388	45	26
Other	8 210	243	7 918	23	26
<b>North America</b>	<b>20 616</b>	<b>451</b>	<b>20 043</b>	<b>101</b>	<b>21</b>
Canada	4 015	88	3 904	15	8
USA	16 594	363	16 132	86	13
Other	7	-	7	-	-
<b>Central and South America</b>	<b>4 704</b>	<b>94</b>	<b>4 551</b>	<b>29</b>	<b>30</b>
Argentina	667	13	652	1	1
Brazil	2 705	37	2 638	14	16
Colombia	234	5	223	5	1
Other	1 098	39	1 038	9	12
<b>Australasia</b>	<b>8 336</b>	<b>140</b>	<b>8 174</b>	<b>12</b>	<b>10</b>
Australia	6 886	117	6 757	3	9

**Table 4. Number of tourists by country of residence and purpose of visit, November 2009 (continued)**

<b>Country</b>	<b>Grand Total</b>	<b>Business</b>	<b>Holiday</b>	<b>Study</b>	<b>Transit</b>
New Zealand	1 394	19	1 367	7	1
Other	56	4	50	2	-
<b>Middle East</b>	<b>2 860</b>	<b>173</b>	<b>2 660</b>	<b>17</b>	<b>10</b>
Iran	319	31	283	3	2
Israel	1 247	46	1 190	4	7
Saudi Arabia	453	14	435	4	-
Other	841	82	752	6	1
<b>Asia</b>	<b>16 936</b>	<b>1 001</b>	<b>15 715</b>	<b>110</b>	<b>110</b>
China	4 328	277	4 020	29	2
Hong Kong	649	-	647	1	1
India	3 857	426	3 372	25	34
Japan	1 526	53	1 459	4	10
Korea	1 259	29	1 204	24	2
Malaysia	931	16	906	7	2
Pakistan	771	44	717	4	6
Singapore	792	18	773	-	1
Taiwan	762	23	736	3	-
Other	2 061	115	1 881	13	52
<b>Africa</b>	<b>434 804</b>	<b>5 243</b>	<b>426 174</b>	<b>2 759</b>	<b>628</b>
<b>SADC</b>	<b>420 898</b>	<b>4 637</b>	<b>413 215</b>	<b>2 493</b>	<b>553</b>
Angola	3 156	78	2 967	95	16
Botswana	41 345	45	40 584	689	27
DRC	2 743	80	2 574	65	24
Lesotho	88 178	37	87 564	334	243
Madagascar	206	4	197	3	2
Malawi	10 888	260	10 597	22	9
Mauritius	1 249	15	1 225	7	2
Mozambique	80 084	202	79 702	112	68
Namibia	12 555	1 623	10 696	187	49
Swaziland	48 705	205	47 893	576	31

**Table 4. Number of tourists by country of residence and purpose of visit, November 2009 (continued)**

Country	Grand Total	Business	Holiday	Study	Transit
Tanzania	1 315	73	1 216	26	-
Zambia	12 823	1 010	11 777	32	4
Zimbabwe	117 651	1 005	116 223	345	78
<b>'Other' African</b>	<b>13 906</b>	<b>606</b>	<b>12 959</b>	<b>266</b>	<b>75</b>
<b>East and Central Africa</b>	<b>7 073</b>	<b>313</b>	<b>6 554</b>	<b>163</b>	<b>43</b>
Burundi	82	9	73	-	-
Cameroon	401	19	358	21	3
Central African Republic	12	2	10	-	-
Chad	25	3	22	-	-
Comoros	12	1	10	1	-
Congo	430	14	391	21	4
Djibouti	9	-	9	-	-
Equat Guinea	37	-	18	-	19
Eritrea	60	2	58	-	-
Ethiopia	1 229	23	1 191	14	1
Gabon	364	7	334	23	-
Kenya	2 286	163	2 065	51	7
Reunion	16	-	16	-	-
Rwanda	247	16	218	13	-
Sao Tome and Principe	19	-	19	-	-
Seychelles	310	1	308	1	-
Somalia	432	-	432	-	-
Tristan Da Cunha	1	-	1	-	-
Uganda	1 101	53	1 021	18	9
<b>West Africa</b>	<b>5 791</b>	<b>164</b>	<b>5 514</b>	<b>84</b>	<b>29</b>
Ascension	2	-	2	-	-
Benin	99	-	99	-	-
Burkina Faso	53	8	43	2	-
Cape Verde Island	40	-	40	-	-
Cote D'Ivoire	201	15	183	2	1
Gambia	56	3	53	-	-

**Table 4. Number of tourists by country of residence and purpose of visit, November 2009 (concluded)**

<b>Country</b>	<b>Grand Total</b>	<b>Business</b>	<b>Holiday</b>	<b>Study</b>	<b>Transit</b>
Ghana	1 036	19	1 000	15	2
Guinea	135	6	121	-	8
Guinea-Bissau	21	2	17	-	2
Liberia	66	-	66	-	-
Madeira Islands	13	-	13	-	-
Mali	79	9	68	2	-
Mauritania	10	2	8	-	-
Niger	23	3	20	-	-
Nigeria	3 579	68	3 440	61	10
Saint Helena	48	-	48	-	-
Senegal	204	19	181	2	2
Sierra Leone	85	6	75	-	4
Togo	41	4	37	-	-
<b>North Africa</b>	<b>1 042</b>	<b>129</b>	<b>891</b>	<b>19</b>	<b>3</b>
Algeria	87	14	71	1	1
Egypt	484	53	426	5	-
Libya	78	4	70	4	-
Morocco	85	17	65	1	2
The Sudan	183	26	149	8	-
Tunisia	122	13	109	-	-
Western Sahara	3	2	1	-	-
<b>Unspecified</b>	<b>2 538</b>	<b>76</b>	<b>1 843</b>	<b>613</b>	<b>6</b>



**Table 5. Number of tourists from overseas, SADC and 'other' African regions by sex and age group, November 2009**

Sex	Age group	Total	Region			
			Overseas	SADC	'other' African	Unspecified
<b>All</b>	<b>Total</b>	<b>619 265</b>	<b>181 923</b>	<b>420 898</b>	<b>13 906</b>	<b>2 538</b>
	< 15	25 287	6 059	18 617	439	172
	15-64	560 243	152 070	392 641	13 232	2 300
	65+	33 376	23 760	9 315	235	66
	Unspecified	359	34	325	-	-
<b>Males</b>	<b>Total</b>	<b>338 724</b>	<b>104 014</b>	<b>223 645</b>	<b>9 599</b>	<b>1 466</b>
	< 15	12 630	3 085	9 231	218	96
	15-64	308 677	88 010	210 120	9 218	1 329
	65+	17 239	12 904	4 131	163	41
	Unspecified	178	15	163	-	-
<b>Females</b>	<b>Total</b>	<b>279 786</b>	<b>77 751</b>	<b>196 664</b>	<b>4 305</b>	<b>1 066</b>
	< 15	12 657	2 974	9 386	221	76
	15-64	250 948	63 955	182 016	4 012	965
	65+	16 049	10 810	5 142	72	25
	Unspecified	132	12	120	-	-
<b>Unspecified</b>	<b>Total</b>	<b>755</b>	<b>158</b>	<b>589</b>	<b>2</b>	<b>6</b>
	< 15	-	-	-	-	-
	15-64	618	105	505	2	6
	65+	88	46	42	-	-
	Unspecified	49	7	42	-	-

## EXPLANATORY NOTES

### 1. Introduction

Legal movements across South African borders as well as legal immigration into South Africa fall under the jurisdiction of the DHA. Stats SA then processes and publishes this information.

Administrative data sources from the DHA, that is, information from all the country's ports of entry and applications for permanent residence constitute the only comprehensive source of information on foreign arrivals and departures, documented immigrants and emigrants. The information from this source of data provides the best national coverage (both in terms of space and time) of the population movements of South African residents and foreign travellers. The data:

- can be used to estimate, monitor and understand salient characteristics of foreign travellers and volumes of South African residents travelling outside South Africa;
- provide information that can be used to (a) assess the extent of government's progress in strengthening bilateral political and economic relations by assessing the number of international tourist arrivals; and (b) benchmark surveys focusing on demand for local tourism services by foreign travellers.

The information on documented migrants provides crucial information on receiving countries of South African emigrants which could be targeted in initiatives geared towards attracting back migrants into the country. In addition, the data on permanent residents are valuable in assessing not only the demographic and economic profiles of immigrants but also their contribution to national social and economic programmes.

### 2. Purpose of the statistical release

This release reports on arrivals and departures of foreign and South African travellers. Detailed information on the gender and age structure; mode of travel; national and regional distribution; and purpose of travel of overnight visitors or tourists are provided.

### 3. Scope and coverage

This release covers all the data as received from the DHA. The arrivals of foreign travellers are more detailed than departures as they are reported by mode of travel, gender, age and purpose of visit whereas statistics on South African residents are reported by mode of travel. Statistics on documented migration, i.e. self-declared emigrants and documented immigrants, are currently not reported due to the unavailability of data from the DHA.

### 4. Data

Information published in this release is based on data obtained from the following data sources within the DHA.

- Data routinely collected by immigration officers at all land, air and sea entry ports on all travellers (South African residents and foreign travellers) arriving into or departing from South Africa are captured into the DHA's population Movement Control System (MCS). The counts / statistics relate to the number of individual movements, rather than to the number of people. Hence, the multiple movements of individual people during the calendar month are each counted separately. Generally the data are collected directly from travel documents either by scanning or capturing onto the port's electronic database. No forms or cards are used (except in rare occasions when the capturing system is down) to collect information from travellers. Individual ports regularly transmit data onto the national database at the head office of the DHA.
- Statistics South Africa (Stats SA) downloads the data covering a particular calendar month from the mainframe of the State Information Technology Agency (SITA), where the DHA stores its data.
- As part of data interrogation, data from the OR Tambo International Airport, which has the highest volume of travellers, are compared with passenger statistics from the Airport Company of South Africa (ACSA). As expected, in any specific month, an increase in the volume of passengers reported by ACSA has been accompanied by an increase in the volume of travellers recorded by DHA. A similar pattern was also observed when the volume of travellers decreased. However, the volume of passengers recorded by ACSA is higher than that of the DHA because of, among other reasons, travellers who are in transit and those who boarded airplanes but refused entry into the country. In November 2009, the DHA data was 29,1% lower than that of ACSA.

## 5. Limitations

The information on the total number of arrivals and departures of South African residents is collected from the scanning of passports. However, data are not collected from passengers on country visited; country of final destination, the duration of stay; intended duration of stay and purpose of visit. With this limitation, it is impossible to identify the number of tourists from the data on South African residents.

Due to unavailability of data from the DHA, information on documented immigrants is not included in this current publication. The documented immigration information will be provided as soon as it is made available to Stats SA.

## 6. Definitions of terms

### 6.1 Definitions used by the United Nations World Tourism Organisation (UNWTO)

**Traveller** is someone who moves between different geographical locations for any purpose and any duration.

**Visitor** refers to any person travelling to a place other than that of his/her usual environment for less than 12 months and whose main purpose of the trip is other than the exercise of an activity remunerated from within the place visited.

**Same-day visitor** is a visitor who visits a place for less than one night.

**Tourist** (overnight visitor) is a visitor who stays at least one night in collective or private accommodation in the place visited.

**Tourism** comprises the activities of persons travelling to, and staying in places outside their usual environment, for not more than one consecutive year, for leisure, business and other purposes. The usual environment of a person consists of a certain area around his/her place of residence, plus all other places he/she frequently visits.

### 6.2 Definitions used specifically in this report

**South African resident:** refers to either a South African citizen or a non-South African citizen with a South African permanent residence permit.

**Foreign traveller:** refers to a traveller who is not a South African citizen or permanent resident.

**Region:** refers to the following country classification: Overseas: Europe, North America, Central and South America, Australasia, the Middle East, Asia. Africa: SADC, East and Central Africa, West Africa and North Africa.

**Country:** refers to individual countries within a region. The country of residence is used. The country of residence should not be confused with the country from which the visitor travelled.

**Africa:** refers to all the countries in Africa (both mainland and island countries).

**SADC:** refers to the thirteen countries, excluding South Africa, that belong to the Southern African Development Community.

**'other' African:** refers to all non SADC African countries.

**Overseas:** refers to all countries outside Africa

**Trip:** refers to the arrival and departure of a visitor in a specified month

## 7. Symbols and abbreviations used

= nil

Unspec. = unspecified

## General information

Stats SA publishes approximately 300 different statistical releases each year. It is not economically viable to produce them in more than one of South Africa's eleven official languages. Since the releases are used extensively, not only locally but also by international economic and social-scientific communities, Stats SA releases are published in English.

Stats SA has copyright on this publication. Users November apply the information as they wish, provided that they acknowledge Stats SA as the source of the basic data wherever they process, apply, utilise, publish or distribute the data; and also that they specify that the relevant application and analysis (where applicable) result from their own processing of the data.

## Advance release calendar

An advance release calendar is disseminated on [www.statssa.gov.za](http://www.statssa.gov.za)

## Stats SA products

A complete set of Stats SA publications is available at the Stats SA Library and the following libraries:

National Library of South Africa, Pretoria Division  
National Library of South Africa, Cape Town Division  
Natal Society Library, PieterApritzburg  
Library of Parliament, Cape Town  
Bloemfontein Public Library  
Johannesburg Public Library  
Eastern Cape Library Services, King William's Town  
Central Regional Library, Polokwane  
Central Reference Library, Nelspruit  
Central Reference Collection, Kimberley  
Central Reference Library, Mafikeng

Stats SA also provides a subscription service.

## Electronic services

A large range of data are available via on-line services, diskette and computer printouts. For more details about our electronic data, contact user information services.

You can visit us on the Internet at: [www.statssa.gov.za](http://www.statssa.gov.za)

## Enquiries

Telephone: (012) 310 8600/ 8390/ 8351/ 4892/ 8496/ 8095 (user information services)  
(012) 310 8692 (technical enquiries)  
(012) 310 8161 (orders)  
(012) 310 4883/4885/8018 (library)

Fax: (012) 310 8500/ 8495 (user information services)  
(012) 310 6937 (technical enquiries)

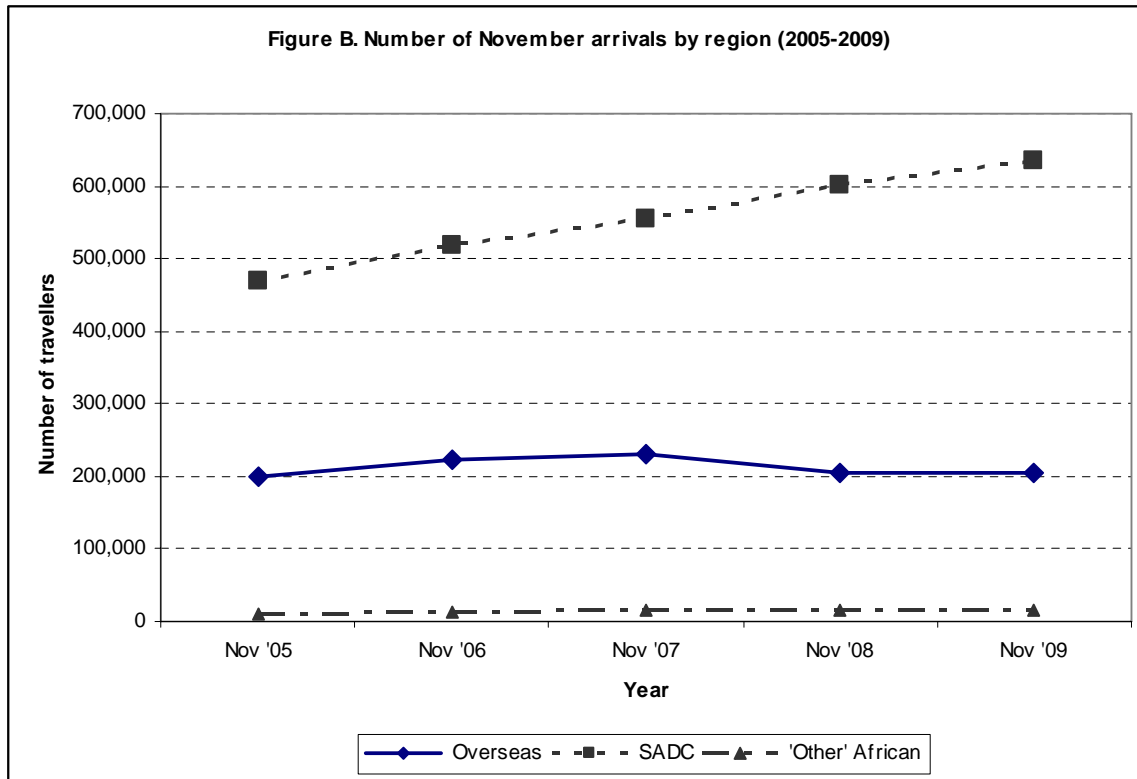
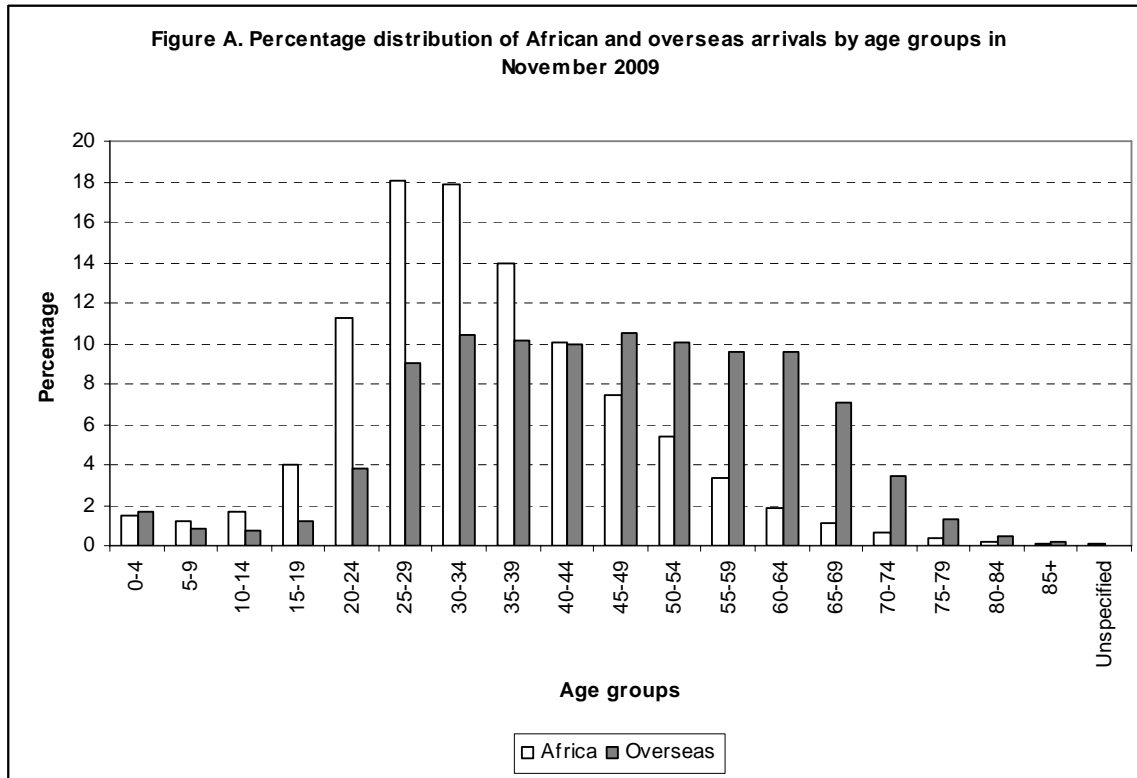
Email: [tshwarog@statssa.gov.za](mailto:tshwarog@statssa.gov.za) (technical enquiries)  
[info@statssa.gov.za](mailto:info@statssa.gov.za) (user information services)  
[distribution@statssa.gov.za](mailto:distribution@statssa.gov.za) (orders)

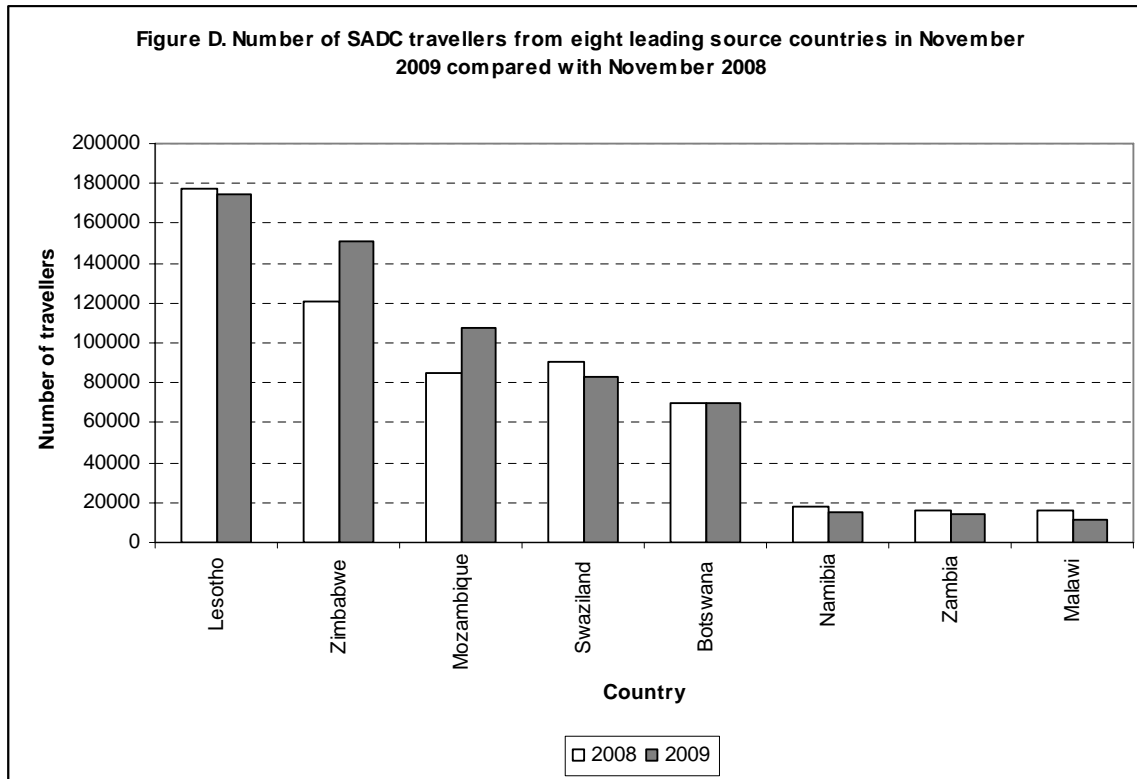
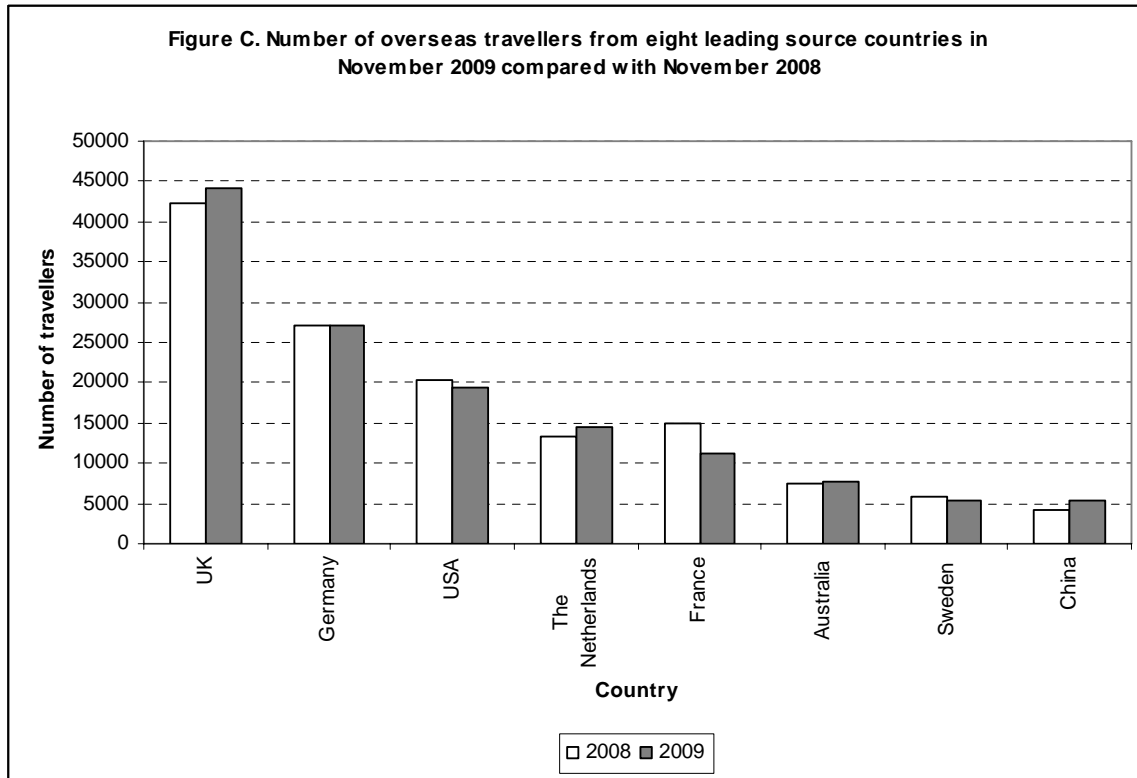
Postal address: Private Bag X44, Pretoria, 0001

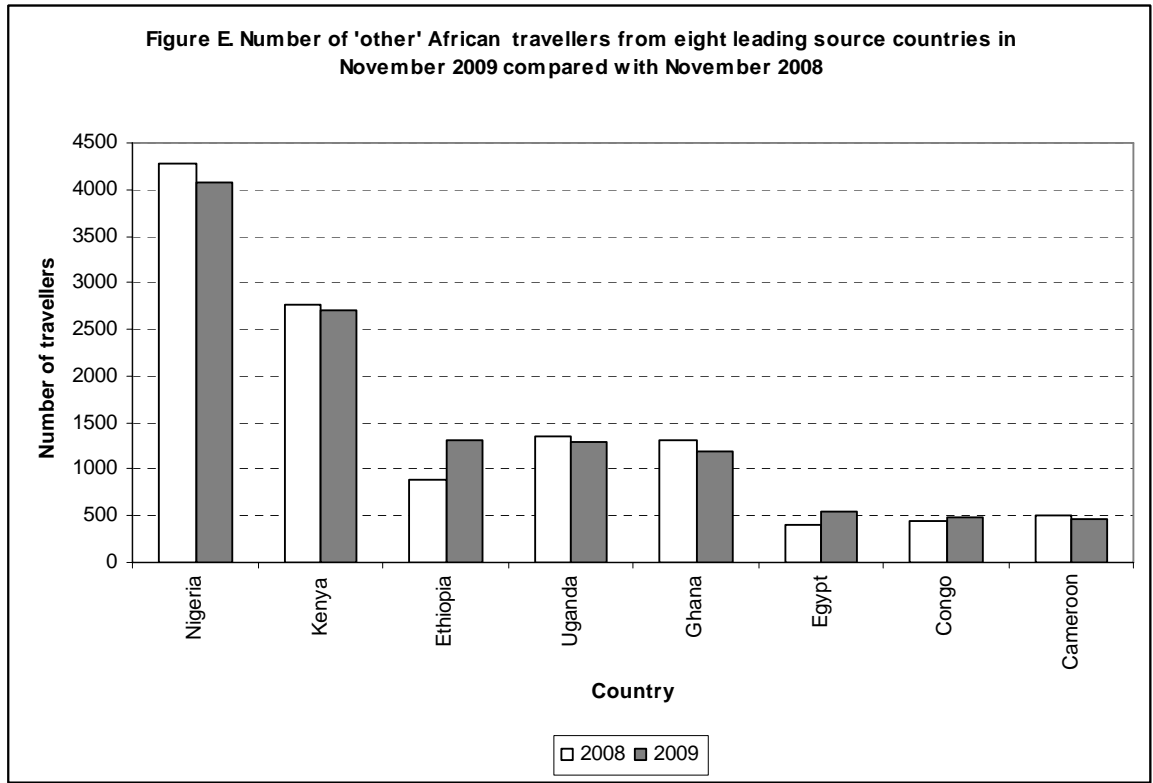
*Produced by Stats SA*

## **APPENDIX**

### **NOVEMBER 2009 GRAPHS AND TABLES BASED ON FOREIGN ARRIVALS**









**Table A. Number of South African residents and foreign travellers by travel direction**

Travel direction	November	October	November	% change	
	2008	2009	2009	November 08 – November 09	October 09 – November 09
<b>Grand Total</b>	<b>2 207 158</b>	<b>2 375 289</b>	<b>2 272 937</b>	<b>3,0</b>	<b>-4,3</b>
<b>South African residents</b>	<b>631 066</b>	<b>722 616</b>	<b>654 713</b>	<b>3,7</b>	<b>-9,</b>
Arrivals	315 629	373 807	332 355	5,3	-11,1
Departures	315 437	348 809	322 358	2,2	-7,6
<b>Foreign travellers</b>	<b>1 576 092</b>	<b>1 652 673</b>	<b>1 618 224</b>	<b>2,7</b>	<b>-2,1</b>
Arrivals	827 605	889 529	864 808	4,5	-2,8
Departures	748 487	763 144	753 416	0,7	-1,3

**Table B. Number of South African residents and foreign travellers by travel direction and mode of travel**

Travel direction	Total	Mode of travel (November 2009)								
		Air					Rail	Road	Sea	Unspecified
		(Cape Town)	(Durban)	(OR Tambo)	(Other)	Total				
<b>Grand Total</b>	<b>2 272 937</b>	<b>146 885</b>	<b>12 563</b>	<b>538 321</b>	<b>6 904</b>	<b>704 673</b>	<b>4 121</b>	<b>1 545 153</b>	<b>395</b>	<b>18 595</b>
<b>South African residents</b>	<b>654 713</b>	<b>30 616</b>	<b>7 647</b>	<b>206 441</b>	<b>4 794</b>	<b>249 498</b>	<b>605</b>	<b>403 220</b>	<b>127</b>	<b>1 263</b>
Arrivals	332 355	16 364	3 865	101 425	2 315	123 969	344	206 707	74	1 261
Departures	322 358	14 252	3 782	105 016	2 479	125 529	261	196 513	53	2
<b>Foreign travellers</b>	<b>1 618 224</b>	<b>116 269</b>	<b>4 916</b>	<b>331 880</b>	<b>2 110</b>	<b>455 175</b>	<b>3 516</b>	<b>1 141 933</b>	<b>268</b>	<b>17 332</b>
Arrivals	864 808	58 033	2 534	167 196	1 066	228 829	1 945	616 585	128	17 321
Departures	753 416	58 236	2 382	164 684	1 044	226 346	1 571	525 348	140	11

**Table C. Number of foreign arrivals by country and mode of travel**

Country	November		Mode of travel (November 2009)								
	2008	2009	Air					Rail	Road	Sea	Unspecified
			Cape Town	Durban	OR Tambo	Other	Total				
<b>Grand Total</b>	<b>827 605</b>	<b>864 808</b>	<b>58 033</b>	<b>2 534</b>	<b>167 196</b>	<b>1 066</b>	<b>228 829</b>	<b>1 945</b>	<b>616 585</b>	<b>128</b>	<b>17 321</b>
<b>Overseas</b>	<b>203 702</b>	<b>206 085</b>	<b>55 811</b>	<b>2 278</b>	<b>118 229</b>	<b>610</b>	<b>176 928</b>	<b>1 746</b>	<b>26 521</b>	<b>107</b>	<b>783</b>
<b>Europe</b>	<b>143 266</b>	<b>142 646</b>	<b>46 890</b>	<b>1 535</b>	<b>72 867</b>	<b>342</b>	<b>121 634</b>	<b>1 160</b>	<b>19 560</b>	<b>55</b>	<b>237</b>
Austria	2 800	2 506	896	29	1 270	3	2 198	49	255	-	4
Belgium	4 828	4 677	1 065	5	2 545	36	3 651	6	1 009	-	11
Denmark	2 324	2 285	511	13	1 481	3	2 008	7	267	-	3
France	14 914	11 293	2 316	29	7 154	30	9 529	37	1 700	1	26
Germany	27 057	27 138	10 076	175	12 853	42	23 146	108	3 866	8	10
Ireland	4 975	3 822	2 009	36	1 425	13	3 483	26	310	-	3
Italy	3 913	4 188	1 145	68	2 475	21	3 709	34	436	-	9
Norway	2 509	2 299	935	2	1 073	2	2 012	25	262	-	-
Portugal	2 998	3 208	325	19	1 503	25	1 872	2	1 327	-	7
Spain	2 295	2 545	332	1	1 919	6	2 258	14	272	-	1
Sweden	5 842	5 423	1 769	1	2 782	3	4 555	13	851	-	4
Switzerland	4 109	4 431	1 128	55	2 517	9	3 709	107	610	-	5
The Netherlands	13 266	14 491	4 088	30	6 431	23	10 572	74	3 828	3	14
UK	42 196	44 274	17 367	955	21 749	91	40 162	422	3 555	9	126
Other	9 240	10 066	2 928	117	5 690	35	8 770	236	1 012	34	14
<b>North America</b>	<b>25 161</b>	<b>23 924</b>	<b>3 278</b>	<b>77</b>	<b>17 228</b>	<b>102</b>	<b>20 685</b>	<b>113</b>	<b>2 811</b>	<b>23</b>	<b>292</b>
	4 839	4 629	928	37	2 991	22	3 978	17	574	16	44
USA	20 313	19 288	2 347	40	14 234	80	16 701	96	2 236	7	248
Other	9	7	3	-	3	-	6	-	1	-	-
<b>Central and South America</b>	<b>5 151</b>	<b>5 391</b>	<b>463</b>	<b>15</b>	<b>4 303</b>	<b>26</b>	<b>4 807</b>	<b>22</b>	<b>553</b>	<b>-</b>	<b>9</b>
Argentina	636	714	185	1	486	3	675	-	39	-	-
Brazil	2 712	3 184	83	12	2 741	19	2 855	7	321	-	1
Colombia	114	243	9	-	210	-	219	1	23	-	-
Other	1 689	1 250	186	2	866	4	1 058	14	170	-	8
<b>Australasia</b>	<b>9 007</b>	<b>9 420</b>	<b>1 128</b>	<b>100</b>	<b>7 392</b>	<b>48</b>	<b>8 668</b>	<b>37</b>	<b>675</b>	<b>14</b>	<b>26</b>
Australia	7 486	7 784	895	66	6 254	41	7 256	25	469	14	20

**Table C. Number of foreign arrivals by country and mode of travel (continued)**

Country	November		Mode of travel (November 2009)								
	2008	2009	Air					Rail	Road	Sea	Unspecified
			Cape Town	Durban	OR Tambo	Other	Total				
New Zealand	1 395	1 571	225	34	1 100	7	1 366	12	188	-	5
Other	126	65	8	-	38	-	46	-	18	-	1
<b>Middle East</b>	<b>2 749</b>	<b>3 131</b>	<b>500</b>	<b>46</b>	<b>2 385</b>	<b>22</b>	<b>2 953</b>	<b>4</b>	<b>167</b>	<b>2</b>	<b>5</b>
Iran	251	334	32	29	262	-	323	1	10	-	-
Israel	1 337	1 416	85	2	1 232	-	1 319	1	91	-	5
Saudi Arabia	259	475	158	2	291	9	460	-	13	2	-
Other	902	906	225	13	600	13	851	2	53	-	-
<b>Asia</b>	<b>18 368</b>	<b>21 573</b>	<b>3 552</b>	<b>505</b>	<b>14 054</b>	<b>70</b>	<b>18 181</b>	<b>410</b>	<b>2 755</b>	<b>13</b>	<b>214</b>
China	4 131	5 267	715	10	4 076	18	4 819	45	325	1	77
India	4 597	5 050	774	260	2 995	12	4 041	71	873	4	61
Japan	1 852	1 853	126	3	1 655	1	1 785	10	56	-	2
Korea	1 051	1 418	125	10	1 157	2	1 294	2	122	-	-
Malaysia	692	1 016	373	6	596	-	975	2	39	-	-
Pakistan	748	991	83	53	433	3	572	2	408	-	9
Philippines	790	1 050	237	72	423	7	739	175	105	8	23
Singapore	663	838	356	5	456	-	817	2	18	-	1
Taiwan	1 088	1 098	205	22	469	6	702	21	353	-	22
Other	2 756	2 992	558	64	1 794	21	2 437	80	456	-	19
<b>Africa</b>	<b>617 695</b>	<b>650 688</b>	<b>2 070</b>	<b>254</b>	<b>45 990</b>	<b>379</b>	<b>48 693</b>	<b>192</b>	<b>588 048</b>	<b>21</b>	<b>13 734</b>
<b>SADC</b>	<b>602 333</b>	<b>634 838</b>	<b>1 801</b>	<b>236</b>	<b>33 577</b>	<b>311</b>	<b>35 925</b>	<b>123</b>	<b>585 106</b>	<b>15</b>	<b>13 669</b>
Angola	3 772	3 414	222	-	3 009	30	3 261	-	151	-	2
Botswana	69 417	69 572	20	3	2 949	89	3 061	90	66 355	1	65
DRC	2 635	2 861	3	1	2 009	15	2 028	-	829	-	4
Lesotho	177 045	174 211	5	-	722	2	729	-	160 161	6	13 315
Madagascar	321	242	1	-	223	-	224	4	14	-	-
Malawi	16 156	11 780	3	1	2 334	4	2 342	-	9 427	3	8
Mauritius	1 789	1 451	159	133	1 021	1	1 314	-	132	-	5
Mozambique	84 691	107 202	91	83	2 742	23	2 939	2	104 178	1	82
Namibia	17 626	15 393	1 213	-	2 717	36	3 966	13	11 409	2	3
Swaziland	90 197	82 571	5	1	785	27	818	6	81 627	-	120

**Table C. Number of foreign arrivals by country and mode of travel (continued)**

Country	November		Mode of travel (November 2009)								
	2008	2009	Air					Rail	Road	Sea	Unspecified
			Cape Town	Durban	OR Tambo	Other	Total				
Tanzania	1 546	1 473	8	2	1 057	4	1 071	-	398	-	4
Zambia	15 986	14 068	10	1	4 880	9	4 900	1	9 161	1	5
Zimbabwe	121 152	150 600	61	11	9 129	71	9 272	7	141 264	1	56
<b>East and Central Africa</b>	<b>7 366</b>	<b>8 022</b>	<b>61</b>	<b>3</b>	<b>5 995</b>	<b>28</b>	<b>6 087</b>	<b>3</b>	<b>1 894</b>	<b>2</b>	<b>36</b>
Burundi	110	93	-	-	71	1	72	-	21	-	-
Cameroon	503	473	10	-	412	-	422	-	49	-	2
Central African Republic	16	15	-	-	12	-	12	-	3	-	-
Chad	27	25	-	-	24	1	25	-	-	-	-
Comoros	40	17	-	-	15	-	15	-	1	-	1
Congo	439	482	13	-	339	6	358	-	122	-	2
Djibouti	7	9	-	-	7	-	7	-	2	-	-
Equat Guinea	41	45	1	-	33	-	34	-	11	-	-
Eritrea	36	76	3	-	65	-	68	-	7	-	1
Ethiopia	884	1 315	3	1	729	4	737	-	565	2	11
Gabon	345	384	3	-	370	2	375	-	9	-	-
Kenya	2 771	2 700	16	2	2 252	9	2 279	1	407	-	13
Reunion	31	17	-	-	17	-	17	-	-	-	-
Rwanda	294	288	-	-	254	4	258	-	30	-	-
Sao Tome and Principe	16	24	1	-	19	-	20	-	4	-	-
Seychelles	376	336	3	-	327	-	330	-	6	-	-
Somalia	87	437	-	-	13	-	13	-	424	-	-
Tristan Da Cunha	1	1	-	-	1	-	1	-	-	-	-
Uganda	1 342	1 285	8	-	1 035	1	1 044	2	233	-	6
<b>West Africa</b>	<b>7 002</b>	<b>6 622</b>	<b>72</b>	<b>4</b>	<b>5 506</b>	<b>25</b>	<b>5 607</b>	<b>63</b>	<b>926</b>	<b>1</b>	<b>25</b>
Ascension	3	4	-	-	-	-	-	-	4	-	-
Benin	119	110	1	-	97	-	98	-	12	-	-
Burkina Faso	68	64	1	-	61	-	62	-	2	-	-
Cape Verde Island	84	48	2	-	36	3	41	-	7	-	-
Cote D'Ivoire	242	226	10	-	205	2	217	1	8	-	-
Gambia	80	66	3	-	56	-	59	-	7	-	-

**Table C. Number of foreign arrivals by country and mode of travel (concluded)**

Country	November		Mode of travel (November 2009)								
	2008	2009	Air					Rail	Road	Sea	Unspecified
			Cape Town	Durban	OR Tambo	Other	Total				
Ghana	1 304	1 196	9	1	1 019	4	1 033	1	158	-	4
Guinea	125	160	-	-	95	1	96	-	64	-	-
Guinea-Bissau	23	27	-	-	14	-	14	-	13	-	-
Liberia	54	75	-	-	64	-	64	-	10	-	1
Madeira Islands	13	15	6	-	3	-	9	-	6	-	-
Mali	101	88	-	-	70	-	70	-	18	-	-
Mauritania	17	13	-	-	13	-	13	-	-	-	-
Niger	37	23	1	-	22	-	23	-	-	-	-
Nigeria	4 282	4 085	34	2	3 430	15	3 481	17	568	1	18
Saint Helena	6	49	2	-	3	-	5	42	2	-	-
Senegal	313	234	1	-	217	-	218	2	14	-	-
Sierra Leone	67	95	2	1	62	-	65	-	28	-	2
Togo	64	44	-	-	39	-	39	-	5	-	-
<b>North Africa</b>	<b>994</b>	<b>1 206</b>	<b>136</b>	<b>11</b>	<b>912</b>	<b>15</b>	<b>1 074</b>	<b>3</b>	<b>122</b>	<b>3</b>	<b>4</b>
Algeria	118	110	6	-	74	13	93	-	16	1	-
Egypt	400	540	49	6	460	-	515	3	20	2	-
Libya	93	113	8	-	79	2	89	-	22	-	2
Morocco	114	92	16	-	65	-	81	-	11	-	-
The Sudan	148	198	18	3	152	-	173	-	23	-	2
Tunisia	121	150	39	2	80	-	121	-	29	-	-
Western Sahara		3	-	-	2	-	2	-	1	-	-
<b>Unspecified</b>	<b>6 208</b>	<b>8 035</b>	<b>152</b>	<b>2</b>	<b>2 977</b>	<b>77</b>	<b>3 208</b>	<b>7</b>	<b>2 016</b>	<b>-</b>	<b>2 804</b>

**Table D. Number of foreign arrivals by region and purpose of visit**

<b>Continent</b>	<b>Grand Total</b>	<b>Business</b>	<b>Holiday</b>	<b>Study</b>	<b>Work</b>	<b>Transit</b>	<b>Border traffic</b>	<b>Unspecified</b>
<b>Grand Total</b>	<b>864 808</b>	<b>10 403</b>	<b>817 292</b>	<b>4 550</b>	<b>13 912</b>	<b>1 809</b>	<b>16 840</b>	<b>2</b>
<b>Overseas</b>	<b>206 085</b>	<b>4 744</b>	<b>192 383</b>	<b>508</b>	<b>7 583</b>	<b>550</b>	<b>317</b>	<b>-</b>
Europe	142 646	2 831	135 665	235	3 589	256	70	-
North America	23 924	470	22 741	102	521	55	35	-
Central and South America	5 391	97	5 075	29	151	38	1	-
Australasia	9 420	146	9 070	12	160	24	8	-
Middle East	3 131	177	2 820	17	104	13	-	-
Asia	21 573	1 023	17 012	113	3 058	164	203	-
<b>Africa</b>	<b>650 688</b>	<b>5 577</b>	<b>622 833</b>	<b>3 363</b>	<b>3 942</b>	<b>1 253</b>	<b>13 719</b>	<b>1</b>
SADC	634 838	4 930	609 020	3 081	2 998	1 151	13 657	1
East and Central Africa	8 022	338	7 021	178	395	56	34	-
West Africa	6 622	176	5 835	85	465	36	25	-
North Africa	1 206	133	957	19	84	10	3	-
<b>Unspecified</b>	<b>8 035</b>	<b>82</b>	<b>2 076</b>	<b>679</b>	<b>2 387</b>	<b>6</b>	<b>2 804</b>	<b>1</b>

**Table E. Number of foreign arrivals by country and purpose of visit**

Country	2008	2009	Business	Holiday	Study	Work	Transit	Unspecified	Border traffic
<b>Grand Total</b>	<b>827 605</b>	<b>864 808</b>	<b>10 403</b>	<b>817 292</b>	<b>4 550</b>	<b>13 912</b>	<b>1 809</b>	<b>2</b>	<b>16 840</b>
<b>Overseas</b>	<b>203 702</b>	<b>206 085</b>	<b>4 744</b>	<b>192 383</b>	<b>508</b>	<b>7 583</b>	<b>550</b>	<b>-</b>	<b>317</b>
<b>Europe</b>	<b>143 266</b>	<b>142 646</b>	<b>2 831</b>	<b>135 665</b>	<b>235</b>	<b>3 589</b>	<b>256</b>	<b>-</b>	<b>70</b>
Austria	2 800	2 506	42	2 407	2	53	1	-	1
Belgium	4 828	4 677	72	4 537	4	55	3	-	6
Denmark	2 324	2 285	60	2 167	1	51	5	-	1
France	14 914	11 293	190	10 763	24	296	18	-	2
Germany	27 057	27 138	423	26 158	56	473	26	-	2
Ireland	4 975	3 822	82	3 651	6	76	4	-	3
Italy	3 913	4 188	92	3 981	4	96	12	-	3
Norway	2 509	2 299	86	2 137	10	60	6	-	-
Portugal	2 998	3 208	35	3 121	4	33	8	-	7
Spain	2 295	2 545	35	2 420	2	70	18	-	-
Sweden	5 842	5 423	100	5 219	11	90	2	-	1
Switzerland	4 109	4 431	66	4 264	15	76	10	-	-
The Netherlands	13 266	14 491	212	14 074	25	149	24	-	7
UK	42 196	44 274	1 084	42 094	48	951	65	-	32
Other	9 240	10 066	252	8 672	23	1 060	54	-	5
<b>North America</b>	<b>25 161</b>	<b>23 924</b>	<b>470</b>	<b>22 741</b>	<b>102</b>	<b>521</b>	<b>55</b>	<b>-</b>	<b>35</b>
Canada	4 839	4 629	92	4 412	15	92	17	-	1
USA	20 313	19 288	378	18 322	87	429	38	-	34
Other	9	7	-	7	-	-	-	-	-
<b>Central and South America</b>	<b>5 151</b>	<b>5 391</b>	<b>97</b>	<b>5 075</b>	<b>29</b>	<b>151</b>	<b>38</b>	<b>-</b>	<b>1</b>
Argentina	636	714	13	684	1	15	1	-	-
Brazil	2 712	3 184	39	3 032	14	77	22	-	-
Colombia	114	243	5	226	5	6	1	-	-
Other	1 689	1 250	40	1 133	9	53	14	-	1
<b>Australasia</b>	<b>9 007</b>	<b>9 420</b>	<b>146</b>	<b>9 070</b>	<b>12</b>	<b>160</b>	<b>24</b>	<b>-</b>	<b>8</b>
Australia	7 486	7 784	122	7 512	3	119	21	-	7

**Table E. Number of foreign arrivals by country and purpose of visit (continued)**

New Zealand	1 395	1 571	20	1 502	7	39	3	-	-
Other	126	65	4	56	2	2	-	-	1
<b>Middle East</b>	<b>2 749</b>	<b>3 131</b>	<b>177</b>	<b>2 820</b>	<b>17</b>	<b>104</b>	<b>13</b>	-	-
Iran	251	334	31	289	3	9	2	-	-
Israel	1 337	1 416	48	1 318	4	38	8	-	-
Saudi Arabia	259	475	14	441	4	16	-	-	-
Other	902	906	84	772	6	41	3	-	-
<b>Asia</b>	<b>18 368</b>	<b>21 573</b>	<b>1 023</b>	<b>17 012</b>	<b>113</b>	<b>3 058</b>	<b>164</b>	-	<b>203</b>
China	4 131	5 267	283	4 174	29	701	4	-	76
India	4 597	5 050	436	3 706	27	776	48	-	57
Japan	1 852	1 853	54	1 677	4	107	11	-	-
Korea	1 051	1 418	30	1 298	25	61	4	-	-
Malaysia	692	1 016	16	960	7	30	3	-	-
Pakistan	748	991	44	828	4	100	6	-	9
Philippines	790	1 050	18	329	-	615	65	-	23
Singapore	663	838	18	806	-	10	4	-	-
Taiwan	1 088	1 098	27	803	3	241	2	-	22
Other	2 756	2 992	97	2 431	14	417	17	-	16
<b>Africa</b>	<b>617 695</b>	<b>650 688</b>	<b>5 577</b>	<b>622 833</b>	<b>3 363</b>	<b>3 942</b>	<b>1 253</b>	<b>1</b>	<b>13 719</b>
<b>SADC</b>	<b>602 333</b>	<b>634 838</b>	<b>4 930</b>	<b>609 020</b>	<b>3 081</b>	<b>2 998</b>	<b>1 151</b>	<b>1</b>	<b>13 657</b>
Angola	3 772	3 414	81	3 127	100	82	24	-	-
Botswana	69 417	69 572	57	68 124	1 003	228	96	-	64
DRC	2 635	2 861	80	2 614	65	78	24	-	-
Lesotho	177 045	174 211	69	159 723	431	145	528	-	13 315
Madagascar	321	242	4	207	3	26	2	-	-
Malawi	16 156	11 780	265	11 378	22	90	17	-	8
Mauritius	1 789	1 451	15	1 397	8	23	3	-	5
Mozambique	84 691	107 202	239	106 547	116	137	80	1	82
Namibia	17 626	15 393	1 696	13 278	197	56	163	-	3
Swaziland	90 197	82 571	213	81 250	678	225	86	-	119



**Table E. Number of foreign arrivals by country and purpose of visit (continued)**

Tanzania	1 546	1 473	75	1 334	28	32	-	-	4
Zambia	15 986	14 068	1 029	12 884	34	104	14	-	3
Zimbabwe	121 152	150 600	1 107	147 157	396	1 772	114	-	54
<b>East and Central Africa</b>	<b>7 366</b>	<b>8 022</b>	<b>338</b>	<b>7 021</b>	<b>178</b>	<b>395</b>	<b>56</b>	<b>-</b>	<b>34</b>
Burundi	110	93	9	78	-	6	-	-	-
Cameroon	503	473	23	375	21	49	3	-	2
Central African Republic	16	15	2	10	-	3	-	-	-
Chad	27	25	3	22	-	-	-	-	-
Comoros	40	17	1	11	1	3	1	-	-
Congo	439	482	14	425	23	14	4	-	2
Djibouti	7	9	-	9	-	-	-	-	-
Equat Guinea	41	45	1	24	-	1	19	-	-
Eritrea	36	76	2	66	-	7	-	-	1
Ethiopia	884	1 315	24	1 211	16	52	2	-	10
Gabon	345	384	7	349	23	4	1	-	-
Kenya	2 771	2 700	173	2 271	61	171	11	-	13
Reunion	31	17	-	17	-	-	-	-	-
Rwanda	294	288	18	233	13	19	5	-	-
Sao Tome and Principe	16	24	1	19	-	4	-	-	-
Seychelles	376	336	1	334	1	-	-	-	-
Somalia	87	437	-	433	-	4	-	-	-
Tristan Da Cunha	1	1	-	1	-	-	-	-	-
Uganda	1 342	1 285	59	1 133	19	58	10	-	6
<b>West Africa</b>	<b>7 002</b>	<b>6 622</b>	<b>176</b>	<b>5 835</b>	<b>85</b>	<b>465</b>	<b>36</b>	<b>-</b>	<b>25</b>
Ascension	3	4	-	4	-	-	-	-	-
Benin	119	110	-	103	-	7	-	-	-
Burkina Faso	68	64	8	44	2	10	-	-	-
Cape Verde Island	84	48	-	47	-	1	-	-	-
Cote D'Ivoire	242	226	17	189	2	17	1	-	-
Gambia	80	66	3	56	-	7	-	-	-

**Table E. Number of foreign arrivals by country and purpose of visit (concluded)**

Ghana	1 304	1 196	25	1 089	15	61	2	-	4
Guinea	125	160	6	139	-	6	9	-	-
Guinea-Bissau	23	27	2	22	-	1	2	-	-
Liberia	54	75	-	71	-	3	-	-	1
Madeira Islands	13	15	-	15	-	-	-	-	-
Mali	101	88	11	72	2	3	-	-	-
Mauritania	17	13	2	10	-	1	-	-	-
Niger	37	23	3	20	-	-	-	-	-
Nigeria	4 282	4 085	70	3 602	62	319	14	-	18
Saint Helena	6	49	-	49	-	-	-	-	-
Senegal	313	234	19	188	2	23	2	-	-
Sierra Leone	67	95	6	78	-	5	4	-	2
Togo	64	44	4	37	-	1	2	-	-
<b>North Africa</b>	<b>994</b>	<b>1 206</b>	<b>133</b>	<b>957</b>	<b>19</b>	<b>84</b>	<b>10</b>	-	<b>3</b>
Algeria	118	110	14	76	1	17	2	-	-
Egypt	400	540	56	441	5	35	3	-	-
Libya	93	113	4	93	4	9	1	-	2
Morocco	114	92	17	69	1	3	2	-	-
The Sudan	148	198	26	158	8	5	-	-	1
Tunisia	121	150	14	119	-	15	2	-	-
Western Sahara	-	3	2	1	-	-	-	-	-
<b>Unspecified</b>	<b>6 208</b>	<b>8 035</b>	<b>82</b>	<b>2 076</b>	<b>679</b>	<b>2 387</b>	<b>6</b>	<b>1</b>	<b>2 804</b>