



**Statistics
South Africa**

Preferred supplier of quality statistics



Statistical release

P0351

Tourism and Migration

November 2006

**Embargoed until:
27 March 2007
09:30**

Enquiries:

User Information Services
Tel.: (012) 310 8600 / 4892 / 8390

Forthcoming issue:

December 2006

Expected release date

27 March 2007

Statistics South Africa • Mbalom-balo ya Afrika Tshipembe • Tihlayo-tiko ta Afrika-Dzonga • Divalopalo tsa Aforika Borwa • Ezezibalo zaseNingizimu Afrika
Divalopalo tša Afrika Borwa • Divalopalo tsa Afrika Borwa • Ubalom lwaseMzantsi Afrika • Telubalo eNingizimu Afrika • iNanimbalo leSewula Afrika • Statistiek Suid-Afrika

email: info@statssa.gov.za
www.statssa.gov.za

170 Andries Street • Private Bag X44, 0001 Pretoria, South Africa
Tel: +27(12) 310 8911, Fax: +27(12) 321 7381

Contents

	Page
Key findings	
1. Foreign travellers	2
2. Ports of entry and modes of travel used by overseas and mainland Africa travellers	2
2.1 Overseas travellers	2
2.2 Mainland Africa travellers	2
3. Purpose of visit	3
4. Leading source countries of overseas and mainland Africa travellers	3
5. Historical trends in travel	3
6. South African residents	3
Graphics	4-7
Tables	
1. Travellers	
1.1 Arrivals and departures of foreign travellers	
1.1.1 Purpose of visit	8
1.1.2 Mode of travel	8
1.2 Foreign travellers	
1.2.1 Arrivals by country of residence and mode of travel	9
1.2.2 Arrivals by country of residence and purpose of visit	12
Explanatory notes	
1. Sources of data	15
2. Glossary of terms	15
3. Symbols and abbreviations used	15
General information	16

Note: The information on the total number of arrivals and departures of South African citizens and permanent residents is collected from the scanning of passports. However, data on country of final destination and purpose of visit will be available when the Department of Home Affairs (DHA) re-introduces the completion of departure forms by South African citizens and permanent residents at the three international airports (OR Tambo, Cape Town and Durban).

The release provides information on travellers. Due to unavailability of data from DHA, information on documented immigrants is not included in this release. The November 2006 documented immigration information will be provided as soon as it is made available to Stats SA.

It is important to note that travellers include (a) same day visitors and tourists and (b) other travellers such as migrant workers from other countries paid in South Africa.

KEY FINDINGS

1. Foreign travellers

The total number of foreign travellers who visited South Africa through all its ports of entry during November from overseas, mainland Africa as well as those who did not specify their country of residence was 756 440. The November 2006 figure represents an increase of 10,3% when compared with the November 2005 figure of 685 555 (see Table 1.1.1). The number of foreign travellers who departed from South Africa in November 2006 was 683 848, which increased by 9,3% from 625 478 recorded in November 2005.

During November 2006, the most common mode of travel used by foreign travellers arriving in South Africa was road, involving 498 618 (65,9%) of all travellers. There were 230 144 (30,4%) travellers who came to South Africa by air (see Table 1.1.2). Of the total number of foreign travellers arriving by air, 166 376 (72,3%) arrived through OR Tambo International Airport while 62 241 (27,0%) arrived through Cape Town International Airport, 403 (0,2%) arrived through Durban International Airport and the rest, 1 124 (0,5%), arrived through other airports (see Table 1.1.2). Those arriving by rail, sea and unspecified modes of travel were 27 678 (3,7%).

Among the total number of foreign travellers departing from South Africa, road was the most common mode of travel (453 866 representing 66,4%), followed by air (219 384 representing 32,1%). Of the total number of foreign travellers departing by air, 157 966 (72,0%) departed from OR Tambo International Airport, 60 203 (27,4%) departed from Cape Town International Airport, 414 (0,2%) used Durban International Airport and the rest, 801 (0,4%), departed through other airports (see Table 1.1.2). Those departing by rail, sea and unspecified modes of travel were 10 598 (1,5%). Figures 1a and 1b show the breakdown of air arrivals and departures for foreign travellers, respectively, according to the airport used. It is observed that the distribution of air arrivals by port of entry and air departures by port of exit are almost the same.

2. Ports of entry and modes of travel used by overseas and mainland Africa travellers

2.1 Overseas travellers

Table 1.2.1 shows that during November 2006, 224 187 overseas travellers visited South Africa. This represents a 11,0% increase in the volume of overseas travellers as compared to November 2005 when there were 201 988 overseas travellers.

It is further observed that in November 2006, there were 191 104 air arrivals from overseas, which accounts for 85,2% of all overseas arrivals. Of these overseas air arrivals, 129 581 (67,8%) arrived through OR Tambo International Airport; 60 548 (31,7%) arrived through Cape Town International Airport; 301 (0,2%) arrived through Durban International Airport and the rest, 674 (0,3%), arrived through other airports.

The number of overseas travellers arriving by road during November 2006 was 30 269 (13,5%). The number of those arriving by rail, sea and unspecified mode of travel was 2 814 (1,3%). (An excel spreadsheet on the mode of travel for all countries of origin is available on request).

2.2 Mainland Africa travellers

Table 1.2.1 further shows that the total number of travellers who arrived in South Africa from mainland Africa during November 2006 was 528 331, as compared to the November 2005 figure of 479 174, representing an increase of 10,3%. Of these travellers from mainland Africa, the number arriving by road was 467 433 (88,5%).

In November 2006, there were 37 974 (7,2%) air travellers arriving from mainland Africa. Of these air arrivals, 35 893 (94,5%) arrived through OR Tambo International Airport, 1 628 (4,3%) arrived through Cape Town International Airport, 99 (0,3%) arrived through Durban International Airport while the rest, 354 (0,9%), arrived through other airports. The number of travellers from mainland Africa arriving by rail, sea and unspecified mode of travel was 22 924, which constituted 4,3% of all travellers from Mainland Africa.

3. Purpose of visit

Overseas travellers: Of the 224 187 overseas travellers visiting South Africa during November 2006, 206 271 (92,0%) stated that they were in South Africa for holidays, while 9 539 (4,3%) stated that they were on business trips (see Table 1.2.2). Overseas travellers arriving for work purpose were 6 456 (2,9%), those on transit were 677 (0,3%), those who are here to study were 909 (0,4%) and 325 (0,1%) travellers who acquired their border traffic concessions in November 2006. (An excel spreadsheet on the purpose of visit for all countries of origin is available on request.)

Mainland Africa travellers: Of the 528 331 travellers from mainland Africa visiting South Africa during November 2006, the majority 497 688 (94,2%) stated that they were in South Africa for holidays, while 9 709 (1,8%) stated that they were on business trips. A further breakdown of travellers from mainland Africa is as follows: those visiting for the purpose of study were 4 876 (0,9%), those arriving for work purpose were 2 333 (0,4%), those with border traffic concession were 11 397 (2,2%) and travellers on transit were 2 040 (0,4%), as shown in Table 1.2.2.

4. Leading source countries of overseas and mainland Africa travellers

Overseas travellers: Figure 2a indicates that during November 2006, the number of travellers from the UK visiting South Africa was 49 050 (21,9%), making it the leading country of origin of overseas travellers. This was followed by travellers from Germany, 35 859 (16,0%) and the USA, 19 402 (8,7%). Other main countries of origin of overseas travellers were: the Netherlands, 15 560 (6,9%); France, 12 599 (5,6%); Australia, 7 878 (3,5%); Switzerland, 5 562 (2,5%) and Sweden, 5 037 (2,2%). Upon comparing the figures of November 2006 with those of November 2005 (see Figure 2b), the highest increase in the number of arrivals from these leading source countries was for Australia, (17,9% increase from 6 680 in 2005 to 7 878 in 2006).

Travellers from mainland Africa: During November 2006, the top eight countries (Figure 3a) in mainland Africa from which travellers arriving in South Africa came were: Lesotho, 156 263 (29,6%); Zimbabwe, 86 209 (16,3%); Mozambique, 84 335 (16,0%); Swaziland, 78 401 (14,8%); Botswana, 63 741 (12,1%); Namibia, 17 017 (3,2%); Zambia, 13 783 (2,6%) and Malawi, 10 387 (2,0%). When comparing arrival figures from the leading source countries from mainland Africa, (see Figure 3b) for November 2005 and November 2006, the highest increase in the number of travellers was from Namibia, (42,3% increase from 11 957 in 2005 to 17 017 in 2006).

5. Historical trends in travel

It should be borne in mind that there is often a substantial month-to-month variation in travelling figures, and one needs to look at a longer period of several months to be able to detect any trends and patterns. The trend regarding the number of overseas travellers arriving in South Africa since 2002 is shown in Figure 4. Although the figure shows evidence of seasonal fluctuations, the level of overseas travel over the period has shown an upward trend since 2002.

6. South African residents

During November 2006, the most common mode of travel used by South African residents arriving in South Africa was road, involving 178 760 (57,9%) travellers, followed by air, 126 129 (40,8%) and those arriving by rail, sea and unspecified modes of travel, 3 932 (1,3%). The most common mode of travel for South African residents departing was road, involving 182 274 (57,8%) travellers, followed by air, 129 924 (41,2%) and those departing by rail, sea and unspecified modes of travel, 3 030 (1,0%) as shown in Table 1.1.2.

PJ Lehohla
Statistician-General

Fig 1a: Air arrivals by port of entry, South Africa, November 2006

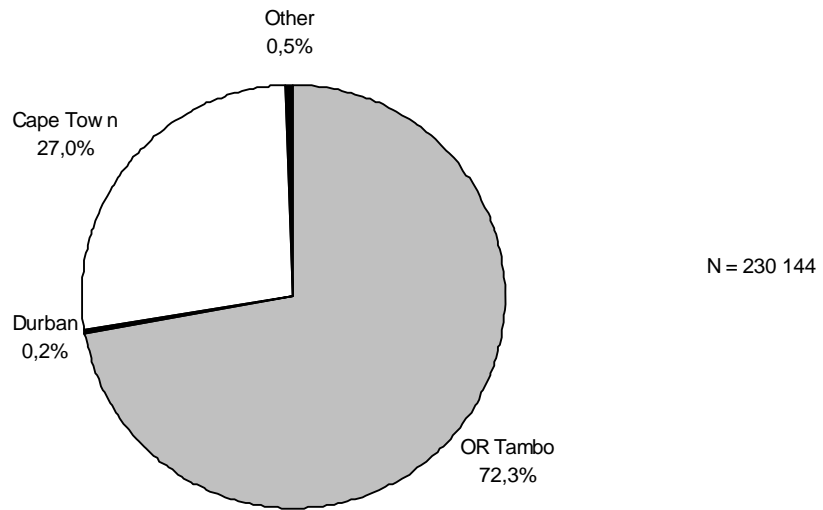


Fig 1b: Air departures by port of exit, South Africa, November 2006

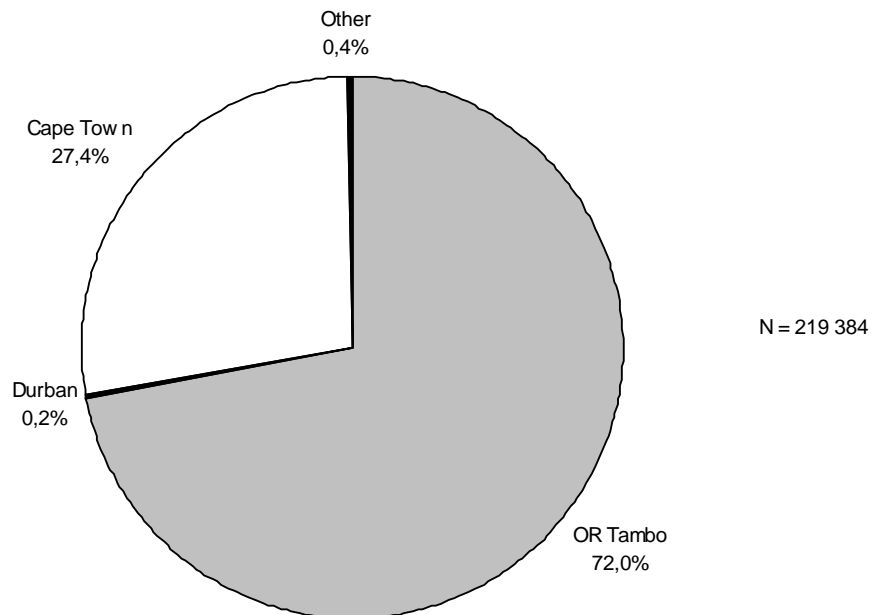


Fig. 2a: The number of overseas travellers arriving from leading source countries in November 2005 and November 2006

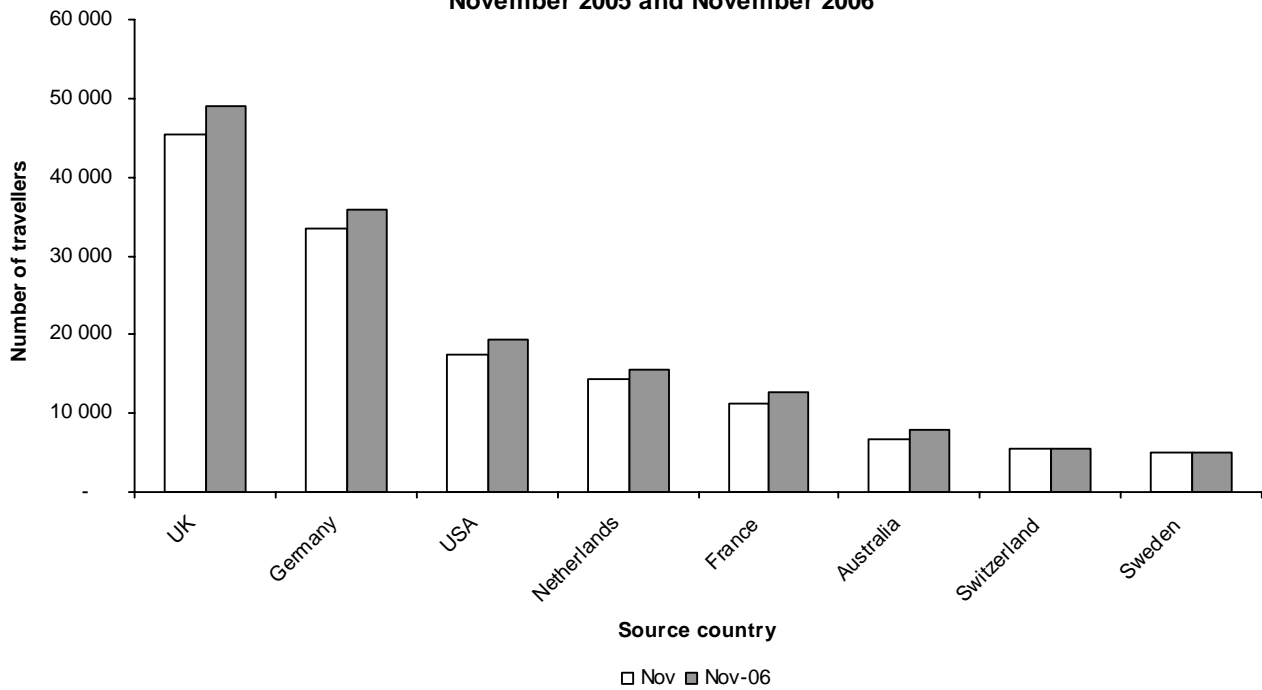


Fig. 2b: Percentage change in number of overseas travellers arriving from leading source countries in November 2006 compared with November 2005

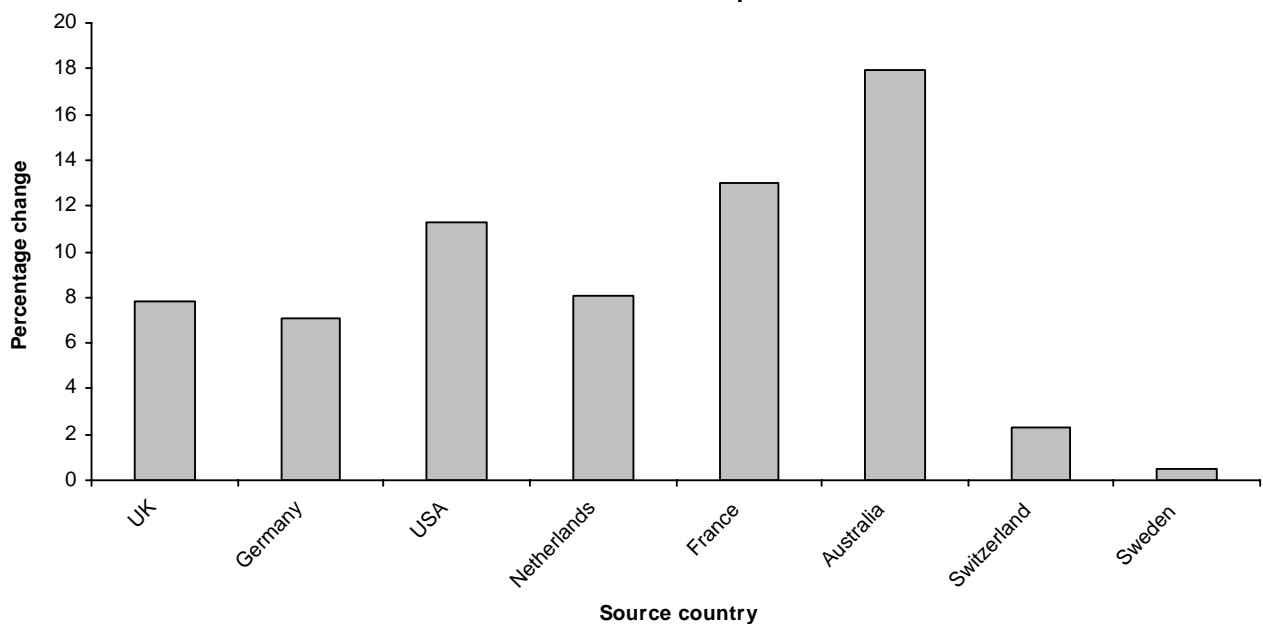


Fig. 3a: The number of travellers from mainland African countries arriving from leading source countries in November 2005 and November 2006

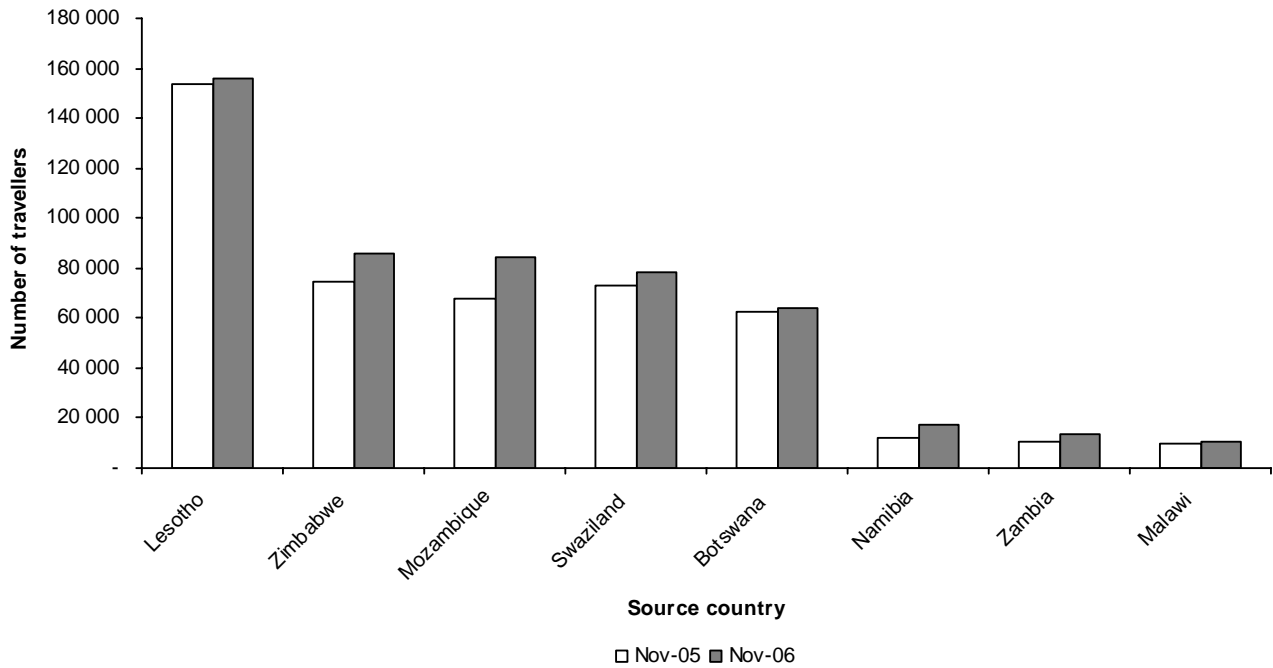
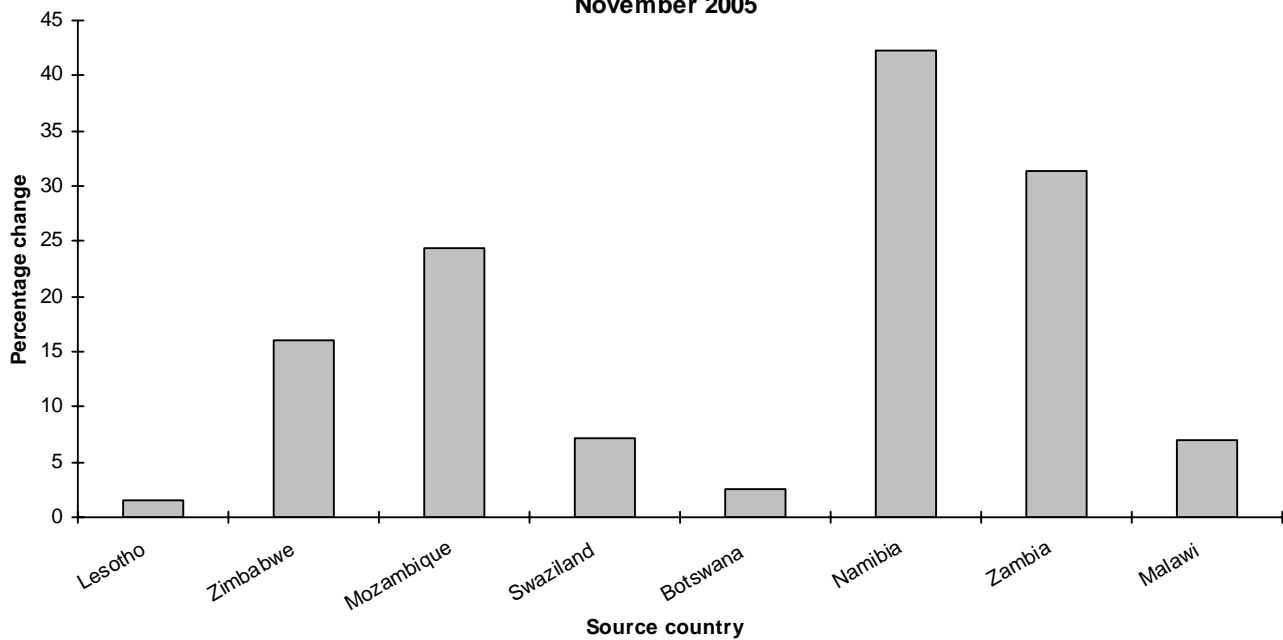
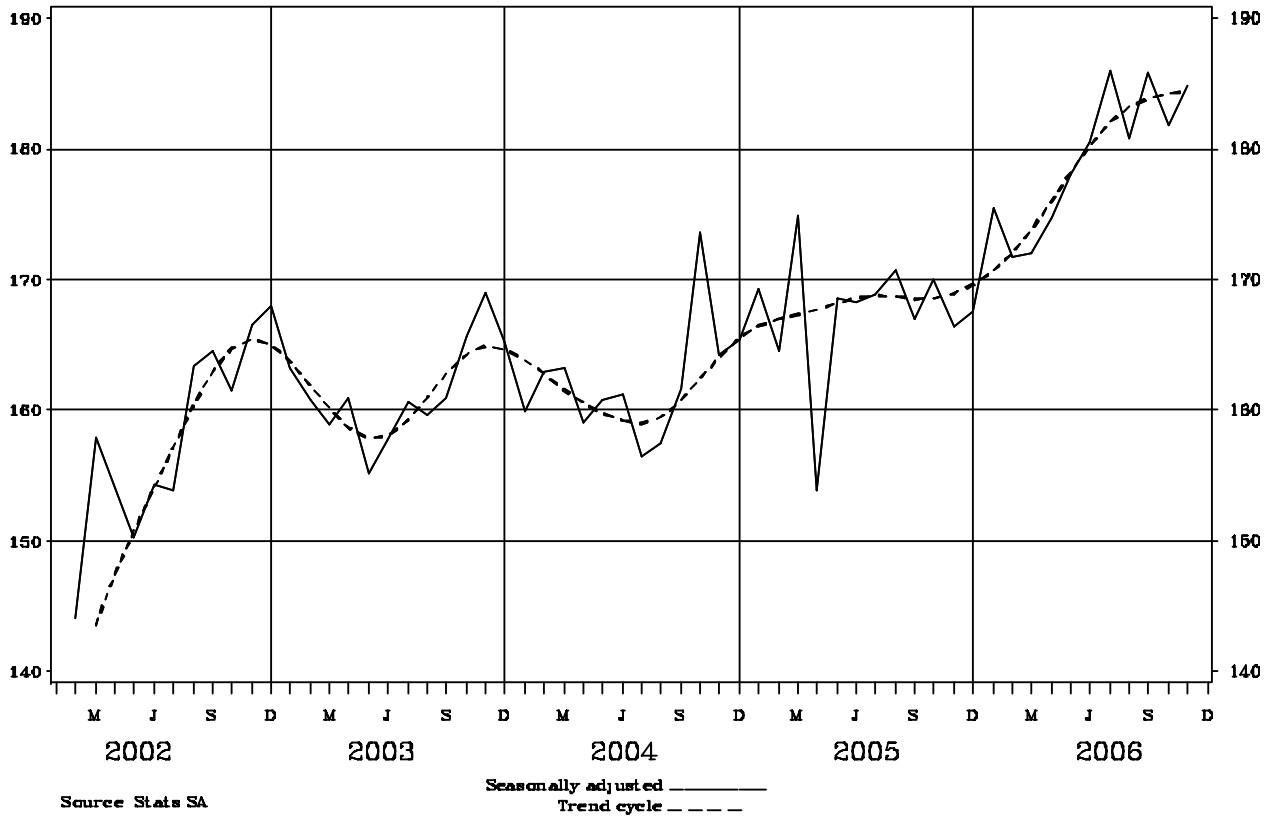


Fig. 3b: Percentage change in the number of travellers from mainland African countries arriving from leading source countries in November 2006 compared with November 2005



**Fig 4: Overseas Travellers – Arrivals
Thousands**



1. TRAVELLERS

1.1 Arrivals and departures of foreign travellers and South African residents

1.1.1 Purpose of visit

Purpose of visit	November		Jan – Nov. Cum. Total		Year Total
	2005	2006	2005	2006	2005
(a) ARRIVALS:					
1.Foreign travellers					
.Actual data	685 555	756 440	6 774 805	7 664 141	7 518 320
.Seasonally adjusted data	646 612	723 558
.Business	20 769	19 288	188 409	182 788	201 522
.Holiday	628 926	705 150	6 116 898	7 057 644	6 811 647
.Study	6 689	5 977	125 778	120 632	133 041
.Work	8 264	9 390	86 425	97 385	94 679
.Contract workers	5 321	-	51 901	8 027	54 899
.Border traffic concession	12 462	13 611	152 752	147 058	164 087
.Transit	2 989	2 726	50 370	47 128	55 886
.Unspecified	135	298	2 272	3 479	2 559
2.South African residents	-	308 821	-	3 875 326	-
(b) DEPARTURES:					
1.Foreign travellers	625 478	683 848	6 045 846	6 712 640	6 728 742
2.South Africans residents	-	315 228	-	3 739 551	-

1. TRAVELLERS

1.1 Arrivals and departures of foreign travellers and South African residents

1.1.2 Mode of travel

Arrivals and departures	Total	Mode of travel (November 2006)								
		AIR					RAIL	ROAD	SEA	UNSPEC.
		(C/Town)	(Durban)	(OR Tambo)	(Other)	Total				
(a) ARRIVALS:										
1.Foreign travellers	756 440	62 241	403	166 376	1 124	230 144	43	498 618	2 092	25 543
2.South African residents	308 821	15 005	898	106 993	3 233	126 129	22	178 760	277	3 633
(b) DEPARTURES:										
1.Foreign travellers	683 848	60 203	414	157 966	801	219 384	18	453 866	1 559	9 021
2.South African residents	315 228	13 833	941	111 908	3 242	129 924	3	182 274	137	2 890

1. TRAVELLERS
1.2 Foreign travellers
1.2.1 Arrivals by country of residence and mode of travel

Country	Foreign travellers												
	Mode of travel (November 2006)												
	November		AIR					RAIL	ROAD	SEA	UNSPEC.	Jan-Nov. Cum. Total	
	2005	2006	(C/Town)	(Durban)	(OR Tambo)	(Other)	Total					2006	2005
GRAND TOTAL	685 555	756 440	62 241	403	166 376	1 124	230 144	43	498 618	2 092	25 543	7 664 141	6 774 805
OVERSEAS TOTAL	201 988	224 187	60 548	301	129 581	674	191 104	17	30 269	1 987	810	1 939 224	1 814 547
EUROPE	146 851	159 992	53 028	83	80 613	424	134 148	12	24 512	1 002	318	1 261 872	1 198 215
Austria	2 765	3 230	1 107	3	1 541	2	2 653	-	566	8	3	19 926	18 955
Belgium	4 552	4 968	1 060	-	2 600	7	3 667	-	1 295	3	3	37 090	35 881
Denmark	2 238	2 776	687	-	1 707	5	2 399	-	359	15	3	22 985	19 622
France	11 152	12 599	955	11	9 386	35	10 387	-	2 166	37	9	99 276	95 873
Germany	33 478	35 859	14 852	11	13 674	26	28 563	1	6 784	430	81	239 274	230 818
Greece	840	899	116	-	684	-	800	-	83	4	12	7 857	7 472
Ireland	4 077	4 060	2 229	2	1 486	7	3 724	-	330	-	6	33 149	32 067
Italy	3 939	4 192	1 087	2	2 638	9	3 736	-	448	2	6	48 715	47 291
Netherlands	14 403	15 560	3 931	8	6 572	27	10 538	3	4 902	73	44	113 264	106 232
Portugal	2 670	2 715	200	6	1 319	1	1 526	-	1 177	7	5	25 575	27 070
Spain	2 182	2 677	338	2	2 065	55	2 460	-	193	22	2	29 115	25 610
Sweden	5 014	5 037	1 954	-	2 464	4	4 422	1	598	9	7	34 260	31 225
Switzerland	5 435	5 562	1 088	-	3 458	26	4 572	-	954	31	5	37 699	35 160
UK	45 503	49 050	19 491	31	25 521	177	45 220	5	3 561	179	85	437 255	422 862
Other	8 603	10 808	3 933	7	5 498	43	9 481	2	1 096	182	47	76 432	62 077
NORTH AMERICA	21 379	24 415	3 812	10	17 647	139	21 608	-	2 392	301	114	281 276	255 991
Canada	3 933	5 006	1 036	6	3 310	36	4 388	-	566	36	16	44 221	36 872
USA	17 438	19 402	2 776	4	14 331	103	17 214	-	1 825	265	98	237 007	219 082
Other	8	7	-	-	6	-	6	-	1	-	-	48	37
CENTRAL & SOUTH AMERICA	3 725	4 768	477	-	3 801	11	4 289	-	435	39	5	50 632	44 980
Argentina	613	704	212	-	446	-	658	-	33	13	-	8 336	8 450
Brazil	2 008	2 543	56	-	2 225	7	2 288	-	242	13	-	27 380	21 656
Chile	181	319	57	-	227	-	284	-	31	4	-	2 849	2 482
Other	923	1 202	152	-	903	4	1 059	-	129	9	5	12 067	12 392

1. TRAVELLERS

1.2 Foreign travellers

1.2.1 Arrivals by country of residence and mode of travel (continued)

Country	Foreign travellers												
	Mode of travel (November 2006)												
	November		AIR					RAIL	ROAD	SEA	UNSPEC.	Jan-Nov. Cum. Total	
	2005	2006	(C/Town)	(Durban)	(OR Tambo)	(Other)	Total					2006	2005
AUSTRALASIA	8 035	9 397	671	38	7 850	23	8 582	1	786	22	6	97 666	85 942
Australia	6 680	7 878	568	38	6 659	21	7 286	1	573	13	5	80 944	69 752
New Zealand	1 309	1 444	100	-	1 132	1	1 233	-	202	9	-	16 026	15 471
Other	46	75	3	-	59	1	63	-	11	-	1	696	719
MIDDLE EAST	2 704	3 168	229	1	2 696	15	2 941	-	187	33	7	34 642	32 067
Israel	1 165	1 447	36	-	1 312	4	1 352	-	91	3	1	14 053	14 596
Saudi Arabia	228	246	10	-	212	-	222	-	14	10	-	3 931	4 651
Turkey	419	435	66	-	339	-	405	-	19	11	-	5 368	3 832
Other	892	1 040	117	1	833	11	962	-	63	9	6	11 290	8 988
ASIA	17 587	20 896	2 059	26	15 968	62	18 115	4	1 840	584	353	197 713	181 506
China	4 709	4 030	524	-	3 155	1	3 680	-	279	-	71	36 899	38 391
Hong Kong	552	627	58	-	563	1	622	-	5	-	-	6 717	7 034
India	3 303	4 584	118	16	3 622	10	3 766	-	670	49	99	44 970	36 785
Japan	2 274	3 119	157	-	2 841	6	3 004	-	67	45	3	31 601	27 174
Malaysia	1 062	974	333	-	583	2	918	-	40	12	4	8 195	9 404
Philippines	460	921	97	1	501	1	600	-	43	245	33	6 769	5 884
Rep of China (Taiwan)	843	1 471	122	3	960	34	1 119	-	164	117	71	14 360	12 688
Rep of Korea	1 064	1 477	109	2	1 247	2	1 360	-	105	6	6	15 827	14 290
Singapore	633	629	249	-	360	2	611	-	12	3	3	5 895	5 373
Other	2 687	3 064	292	4	2 136	3	2 435	4	455	107	63	26 480	24 483

1. TRAVELLERS

1.2 Foreign travellers

1.2.1 Arrivals by country of residence and mode of travel (concluded)

Country	Foreign travellers												
	Mode of travel (November 2006)												
	November		AIR					RAIL	ROAD	SEA	UNSPEC.	Jan-Nov. Cum. Total	
	2005	2006	(C/Town)	(Durban)	(OR Tambo)	(Other)	Total					2006	2005
INDIAN OCEAN ISLANDS													
	1 707	1 551	272	143	1 006	-	1 421	-	117	6	7	15 423	15 846
Mauritius	1 328	1 355	271	134	824	-	1 229	-	116	5	5	12 936	12 949
Other	379	196	1	9	182	-	192	-	1	1	2	2 487	2 897
MAINLAND AFRICA													
	479 174	528 331	1 628	99	35 893	354	37 974	20	467 433	80	22 824	5 689 004	4 901 155
Angola	2 345	2 544	66	-	2 356	10	2 432	1	107	3	1	26 713	26 459
Botswana	62 168	63 741	38	15	2 363	142	2 558	12	61 041	2	128	674 769	711 502
Kenya	1 818	2 121	18	1	1 850	10	1 879	-	230	1	11	21 806	20 196
Lesotho	153 928	156 263	3	-	666	-	669	-	133 673	-	21 921	1 737 819	1 515 601
Malawi	9 701	10 387	5	1	1 733	4	1 743	-	8 611	-	33	113 823	97 754
Mozambique	67 765	84 335	44	60	2 223	22	2 349	-	81 900	1	85	842 760	580 423
Namibia	11 957	17 017	1 207	-	2 532	22	3 761	3	13 215	28	10	196 594	191 578
Nigeria	2 719	3 350	25	-	2 918	11	2 954	-	361	-	35	32 856	27 436
Swaziland	73 149	78 401	5	19	760	2	786	-	77 444	-	171	890 966	819 689
Zambia	10 493	13 783	11	2	5 179	13	5 205	-	8 543	-	35	144 607	115 281
Zimbabwe	74 340	86 209	24	1	5 462	44	5 531	1	80 358	2	317	902 981	705 273
Other	8 791	10 180	182	-	7 851	74	8 107	3	1 950	43	77	103 310	89 963
UNSPECIFIED	4 393	3 922	65	3	902	96	1 066	6	916	25	1 909	35 913	59 103

1. TRAVELLERS
1.2 Foreign travellers
1.2.2 Arrivals by country of residence and purpose of visit

Country	Foreign travellers											
	November		Purpose of visit (November 2006)								Contract worker	Border traffic concession
			Visitors/tourists*									
	2005	2006	Business	Holiday	Study	Work	Transit	Unspec.	Total			
GRAND TOTAL	685 555	756 440	19 288	705 150	5 977	9 390	2 726	298	742 829	-	13 611	
OVERSEAS TOTAL	201 988	224 187	9 539	206 271	909	6 456	677	10	223 862	-	325	
EUROPE	146 851	159 992	5 900	150 511	383	2 837	296	-	159 927	-	65	
Austria	2 765	3 230	92	3 104	1	31	1	-	3 229	-	1	
Belgium	4 552	4 968	187	4 701	8	63	8	-	4 967	-	1	
Denmark	2 238	2 776	131	2 592	3	46	3	-	2 775	-	1	
France	11 152	12 599	424	11 849	56	243	24	-	12 596	-	3	
Germany	33 478	35 859	1 144	34 144	105	427	26	-	35 846	-	13	
Greece	840	899	59	787	2	33	18	-	899	-	-	
Ireland	4 077	4 060	139	3 854	5	48	13	-	4 059	-	1	
Italy	3 939	4 192	198	3 926	4	52	10	-	4 190	-	2	
Netherlands	14 403	15 560	358	15 035	30	124	6	-	15 553	-	7	
Portugal	2 670	2 715	52	2 609	13	36	2	-	2 712	-	3	
Spain	2 182	2 677	90	2 507	3	65	12	-	2 677	-	-	
Sweden	5 014	5 037	236	4 699	17	75	9	-	5 036	-	1	
Switzerland	5 435	5 562	92	5 394	11	48	16	-	5 561	-	1	
UK	45 503	49 050	1 921	46 195	78	728	98	-	49 020	-	30	
Other	8 603	10 808	777	9 115	47	818	50	-	10 807	-	1	
NORTH AMERICA	21 379	24 415	1 050	22 587	171	499	69	-	24 376	-	39	
Canada	3 933	5 006	195	4 662	27	91	23	-	4 998	-	8	
USA	17 438	19 402	853	17 920	144	408	46	-	19 371	-	31	
Other	8	7	2	5	-	-	-	-	7	-	-	
CENTRAL & SOUTH AMERICA	3 725	4 768	185	4 312	16	209	45	-	4 767	-	1	
Argentina	613	704	32	635	2	33	2	-	704	-	-	
Brazil	2 008	2 543	48	2 386	11	68	30	-	2 543	-	-	
Chile	181	319	15	264	-	31	9	-	319	-	-	
Other	923	1 202	90	1 027	3	77	4	-	1 201	-	1	

*Purpose of visit in this case is not linked to duration of stay therefore these individuals can be either visitors or tourists.

1. TRAVELLERS

1.2 Foreign travellers

1.2.2 Arrivals by country of residence and purpose of visit (continued)

Country	Foreign travellers											
	November		Purpose of visit (November 2006)								Contract worker	Border traffic concession
			Visitors/tourists*									
	2005	2006	Business	Holiday	Study	Work	Transit	Unspec.	Total			
AUSTRALASIA	8 035	9 397	284	8 934	24	111	41	-	9 394	-	3	
Australia	6 680	7 878	246	7 504	11	81	34	-	7 876	-	2	
New Zealand	1 309	1 444	34	1 379	7	19	5	-	1 444	-	-	
Other	46	75	4	51	6	11	2	-	74	-	1	
MIDDLE EAST	2 704	3 168	236	2 736	27	160	9	-	3 168	-	-	
Israel	1 165	1 447	65	1 337	3	38	4	-	1 447	-	-	
Saudi Arabia	228	246	13	217	-	15	1	-	246	-	-	
Turkey	419	435	29	347	3	56	-	-	435	-	-	
Other	892	1 040	129	835	21	51	4	-	1 040	-	-	
ASIA	17 587	20 896	1 824	15 809	228	2 609	203	10	20 683	-	213	
China	4 709	4 030	618	2 923	46	384	4	2	3 977	-	53	
Hong Kong	552	627	19	600	-	7	1	-	627	-	-	
India	3 303	4 584	477	3 401	50	529	49	-	4 506	-	78	
Japan	2 274	3 119	162	2 814	6	129	8	-	3 119	-	-	
Malaysia	1 062	974	57	851	24	30	11	-	973	-	1	
Philippines	460	921	26	198	6	618	70	-	918	-	3	
Rep of China (Taiwan)	843	1 471	165	981	4	262	17	2	1 431	-	40	
Rep of Korea	1 064	1 477	59	1 306	40	67	2	-	1 474	-	3	
Singapore	633	629	55	548	3	17	5	-	628	-	1	
Other	2 687	3 064	186	2 187	49	566	36	6	3 030	-	34	

*Purpose of visit in this case is not linked to duration of stay therefore these individuals can be either visitors or tourists.

1. TRAVELLERS

1.2 Foreign travellers

1.2.2 Arrivals by country of residence and purpose of visit (concluded)

Country	Foreign travellers											
	November		Purpose of visit (November 2006)								Contract worker	Border traffic concession
			Visitors/tourists*									
	2005	2006	Business	Holiday	Study	Work	Transit	Unspec.	Total			
INDIAN OCEAN ISLANDS												
	1 707	1 551	60	1 382	60	31	14	-	1 547	-	4	
Mauritius	1 328	1 355	50	1 204	54	30	13	-	1 351	-	4	
Other	379	196	10	178	6	1	1	-	196	-	-	
MAINLAND AFRICA												
	479 174	528 331	9 709	497 688	4 876	2 333	2 040	288	516 934	-	11 397	
Angola	2 345	2 544	94	2 325	50	47	28	-	2 544	-	-	
Botswana	62 168	63 741	193	60 676	2 251	220	328	-	63 668	-	73	
Kenya	1 818	2 121	164	1 721	61	155	11	2	2 114	-	7	
Lesotho	153 928	156 263	382	143 892	570	194	496	-	145 534	-	10 729	
Malawi	9 701	10 387	596	9 596	54	58	56	11	10 371	-	16	
Mozambique	67 765	84 335	240	83 568	230	123	91	2	84 254	-	81	
Namibia	11 957	17 017	2 264	13 871	232	57	591	-	17 015	-	2	
Nigeria	2 719	3 350	141	2 925	104	145	5	11	3 331	-	19	
Swaziland	73 149	78 401	330	76 967	709	106	143	-	78 255	-	146	
Zambia	10 493	13 783	1 826	11 758	67	73	52	2	13 778	-	5	
Zimbabwe	74 340	86 209	2 340	82 345	342	700	126	88	85 941	-	268	
Other	8 791	10 180	1 139	8 044	206	455	113	172	10 129	-	51	
UNSPECIFIED	4 393	3 922	40	1 191	192	601	9	-	2 033	-	1 889	

*Purpose of visit in this case is not linked to duration of stay therefore these individuals can be either visitors or tourists.

EXPLANATORY NOTES

1. Sources of data

Legal movements across South African borders as well as legal immigration into South Africa fall under the jurisdiction of the Department of Home Affairs (DHA). Information on tourism and documented immigration is obtained from all ports of entry. Information on arrivals into and departures from South Africa is captured by DHA and loaded onto the mainframe at State Information Technology Agency (SITA). Stats SA accesses these data remotely, which is then used as part of the input data for this report. Information on legal immigrants to South Africa is sent to Stats SA on computer printout from DHA. The information on the printout is coded and captured by data capturing staff at Stats SA.

2. Glossary of terms

Key terms used in this release are defined as follows:

Tourism comprises the activities of persons travelling to and staying in places outside their usual environment for not more than one consecutive year for leisure, business and other purposes not related to the exercise of an activity remunerated from within the place visited. The usual environment of a person consists of a certain area around his/her place of residence plus all other places s/he frequently visits.

A tourist (overnight visitor) is a visitor who stays at least one night in collective or private accommodation in the place visited. An international tourist is an international visitor who stays at least one night in collective or private accommodation in the country visited.

Traveller is any person on a trip between two or more localities. An **international traveller** refers to any person on a trip between two or more countries.

South African resident refers to either a South African citizen or a non-South African citizen with a South African permanent residence permit.

Foreign traveller refers to a traveller who is not a South African resident.

Mainland Africa refers to all the countries in Africa excluding the islands.

Overseas refers to all countries except countries from mainland Africa and from 'unspecified' countries.

3. Symbols and abbreviations used

- = nil

.. = not applicable

unspec = unspecified

cum = cumulative

General information

Stats SA publishes approximately 300 different statistical releases each year. It is not economically viable to produce them in more than one of South Africa's eleven official languages. Since the releases are used extensively, not only locally but also by international economic and social-scientific communities, Stats SA releases are published in English.

Stats SA has copyright on this publication. Users may apply the information as they wish, provided that they acknowledge Stats SA as the source of the basic data wherever they process, apply, utilise, publish or distribute the data; and also that they specify that the relevant application and analysis (where applicable) result from their own processing of the data.

Advance release calendar

An advance release calendar is disseminated on www.statssa.gov.za

Stats SA products

A complete set of Stats SA publications is available at the Stats SA Library and the following libraries:

National Library of South Africa, Pretoria Division
National Library of South Africa, Cape Town Division
Natal Society Library, Pietermaritzburg
Library of Parliament, Cape Town
Bloemfontein Public Library
Johannesburg Public Library
Eastern Cape Library Services, King William's Town
Central Regional Library, Polokwane
Central Reference Library, Nelspruit
Central Reference Collection, Kimberley
Central Reference Library, Mafikeng

Stats SA also provides a subscription service.

Electronic services

A large range of data are available via on-line services, diskette and computer printouts. For more details about our electronic data, contact user information services.

You can visit us on the Internet at: www.statssa.gov.za

Enquiries

Telephone: (012) 310 8600/ 8390/ 8351/ 4892/ 8496/ 8095 (user information services)
(012) 310 8384 (technical enquiries)
(012) 310 8161 (orders)
(012) 310 4883/4885/8018 (library)

Fax: (012) 310 8500/ 8495 (user information services)
(012) 310 6937 (technical enquiries)

Email: kennethma@statssa.gov.za (technical enquiries)
info@statssa.gov.za (user information services)
distribution@statssa.gov.za (orders)

Postal address: Private Bag X44, Pretoria, 0001

Produced by Stats SA