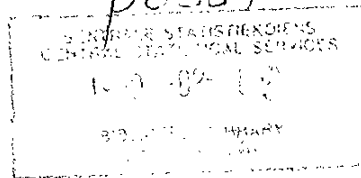




REPUBLIEK VAN SUID-AFRIKA
REPUBLIC OF SOUTH AFRICA



SENTRALE STATISTIEKDIENS CENTRAL STATISTICAL SERVICE

Steynsarkade
Steyn's Arcade
Schoemanstraat 274
274 Schoeman Street
Privaatsak X44
Private Bag X44
PRETORIA
0001
Tel.: 3108-911 (012)
Teleks: 320450, 320523
Telex:
Fax: 3226325 (012)

Fax: (012) 3222769

3220463

3200919

3226325



STATISTIESE NUUSBERIG

STATISTICAL NEWS RELEASE

P0351

STREEKKANTORE REGIONAL OFFICES

DURBAN
Tel.: 305-3904

KAAPSTAD
CAPE TOWN
Tel.: 461-2098
461-6940 (021)

PORT ELIZABETH
Tel.: 52-3801/2 (041)

NELSPRUIT
Tel.: 5-2455/6 (01311)

KIMBERLEY
Tel.: 3-3965/6 (0531)

KEMPTON PARK
Tel.: 394-3420/1 (011)

PIETERSBURG
Tel.: 7-1609 (01521)

KLERKSDORP
Tel.: 24008
24524 (018)

BLOEMPONTEIN
Tel.: 477766/7 (051)

308389

Fax: (051) 478402

TOERISME EN MIGRASIE:
NOVEMBER 1989

TOURISM AND MIGRATION:
NOVEMBER 1989

8 FEBRUARIE/FEBRUARY 1990

SUMMARY

The net result of immigration and emigration shows a gain of 706 persons for November 1989 compared with a gain of 401 persons for November 1988.

The net gain of professional, semi-professional and technical occupations was 341 persons during January 1989 to November 1989, compared with a loss of 1 person during the same period in 1988.

Foreign visitors who arrived in the RSA during January 1989 to November 1989 increased by 17,5% compared with the same period of 1988. During November 1989, 43,3% of the foreign visitors were resident in Europe and 13,5% in other overseas countries, while 43,2% were resident in Africa. Of the 36 496 visitors from Europe, 35,4% were resident in the United Kingdom and 27,2% in West Germany, while 71,1% of the visitors from the Americas were resident in the USA.

The majority of visitors from a single country during November 1989 were from Zimbabwe, namely 20,6% of the total, followed by 15,4% from the United Kingdom and 11,8% from West Germany.

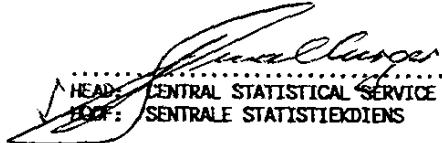
OPSOMMING

Die netto resultaat van immigrasie en emigrasie toon 'n wins van 706 persone vir November 1989 teenoor 'n wins van 401 persone vir November 1988.

Die netto wins aan professionele, semi-professionele en tegniese beroepe was 341 persone gedurende Januarie 1989 tot November 1989, teenoor 'n verlies van 1 persoon gedurende dieselfde tydperk in 1988.

Vreemde besoekers wat in die RSA aangekom het, het gedurende Januarie 1989 tot November 1989 met 17,5% toegeneem teenoor dieselfde tydperk van 1988. Gedurende November 1989 was 43,3% van die vreemde besoekers woonagtig in Europa en 13,5% in ander oorsese lande, terwyl 43,2% in Afrika woonagtig was. Van die 36 496 besoekers uit Europa was 35,4% woonagtig in die Verenigde Koninkryk en 27,2% in Wes-Duitsland, terwyl 71,1% van die besoekers uit die Amerikas in die VSA woonagtig was.

Die meeste besoekers uit 'n enkele land gedurende November 1989 was uit Zimbabwe, naamlik 20,6% van die totaal, gevolg deur 15,4% uit die Verenigde Koninkryk, en 11,8% uit Wes-Duitsland.


HEAD: CENTRAL STATISTICAL SERVICE
HOOF: SENTRALE STATISTIEKDIENS

TABLES 2.2.1 AND 2.2.2

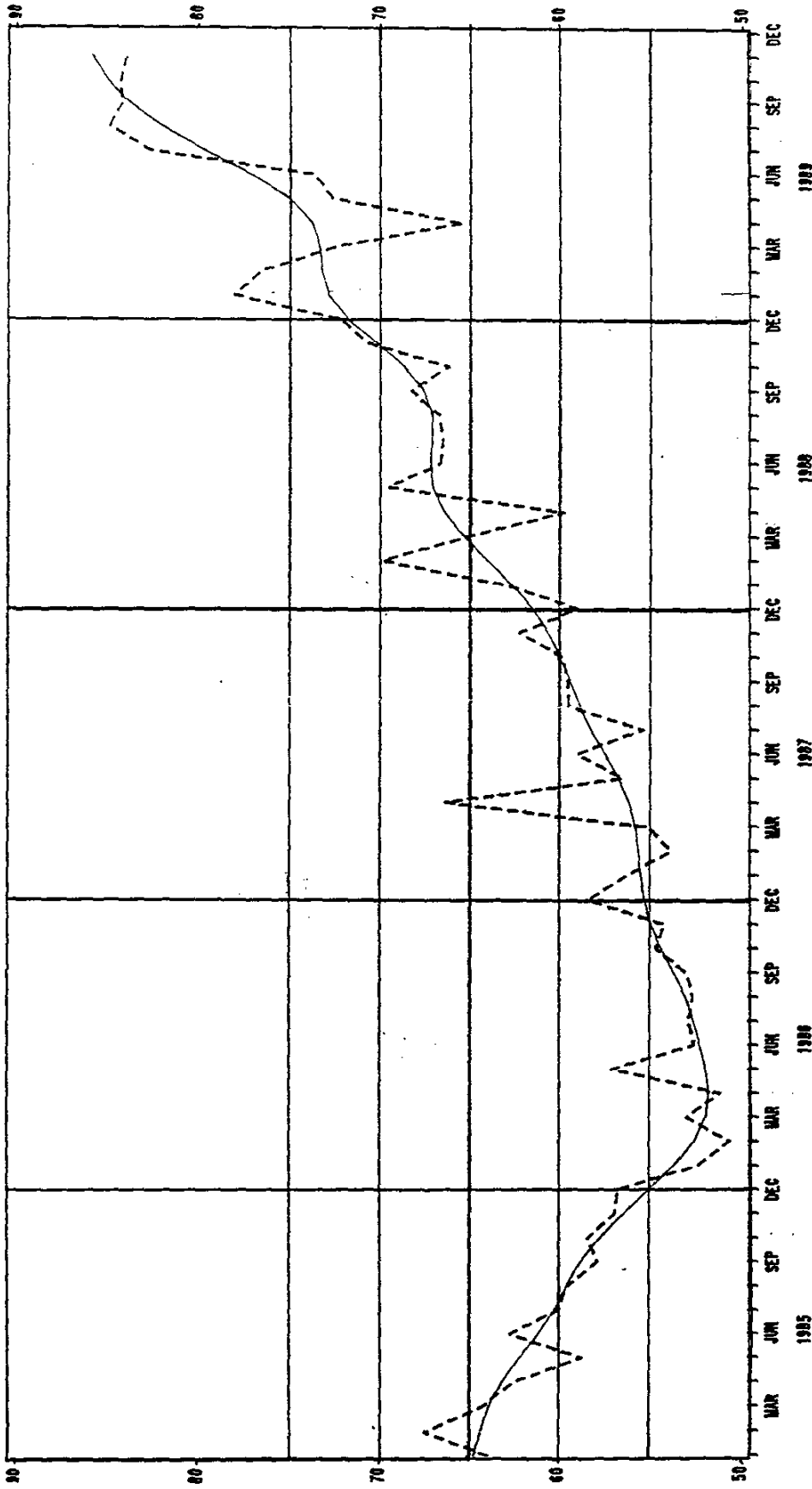
TABELLE 2.2.1 EN 2.2.2

1. As from 1 January 1987 occupations are classified according to the Standard Classification of Occupations, First Edition, 1986.
 2. Comparable data for 1986 and previous years are consequently not available for the following occupations:
 - Agricultural engineer
 - Industrial/production engineer
 - Medical specialist
 - Artisan, apprentice and related occupations
 - 2.1 Agricultural and industrial/production engineer were previously included in the occupation "engineer, not elsewhere classified".
 - 2.2 Medical specialist was previously included in the occupation "medical practitioner".
 - 2.3 Artisan, apprentice and related occupations were previously classified with subgroup "production foreman and supervisor, miner and quarry worker, operator, production and related worker".
1. Vanaf 1 Januarie 1987 word beroepe geklassifiseer volgens die standaard-beroepsklassifikasie, Eerste uitgawe, 1986.
 2. Vergelykbare gegewens vir 1986 en vroeër jare is gevolglik nie beskikbaar vir die volgende beroepe nie:
 - Landbou ingenieur
 - Bedryf/produksie ingenieur
 - Mediese spesialis
 - Ambagsman-, vakleerling- en verwante beroepe
 - 2.1 Landbou- en bedryf/produksie-ingenieur is voorheen by die beroep "ingenieur, nie elders geklassifiseer", ingedeel.
 - 2.2 Mediese spesialis is voorheen by die beroep "mediese praktisyn" ingedeel.
 - 2.3 Ambagsman-, vakleerling- en verwante beroepe is voorheen by subgroep "produksievoorman en -toesighouer, myn- en steengroefwerker, operateur, produksie- en verwante werker" geklassifiseer.

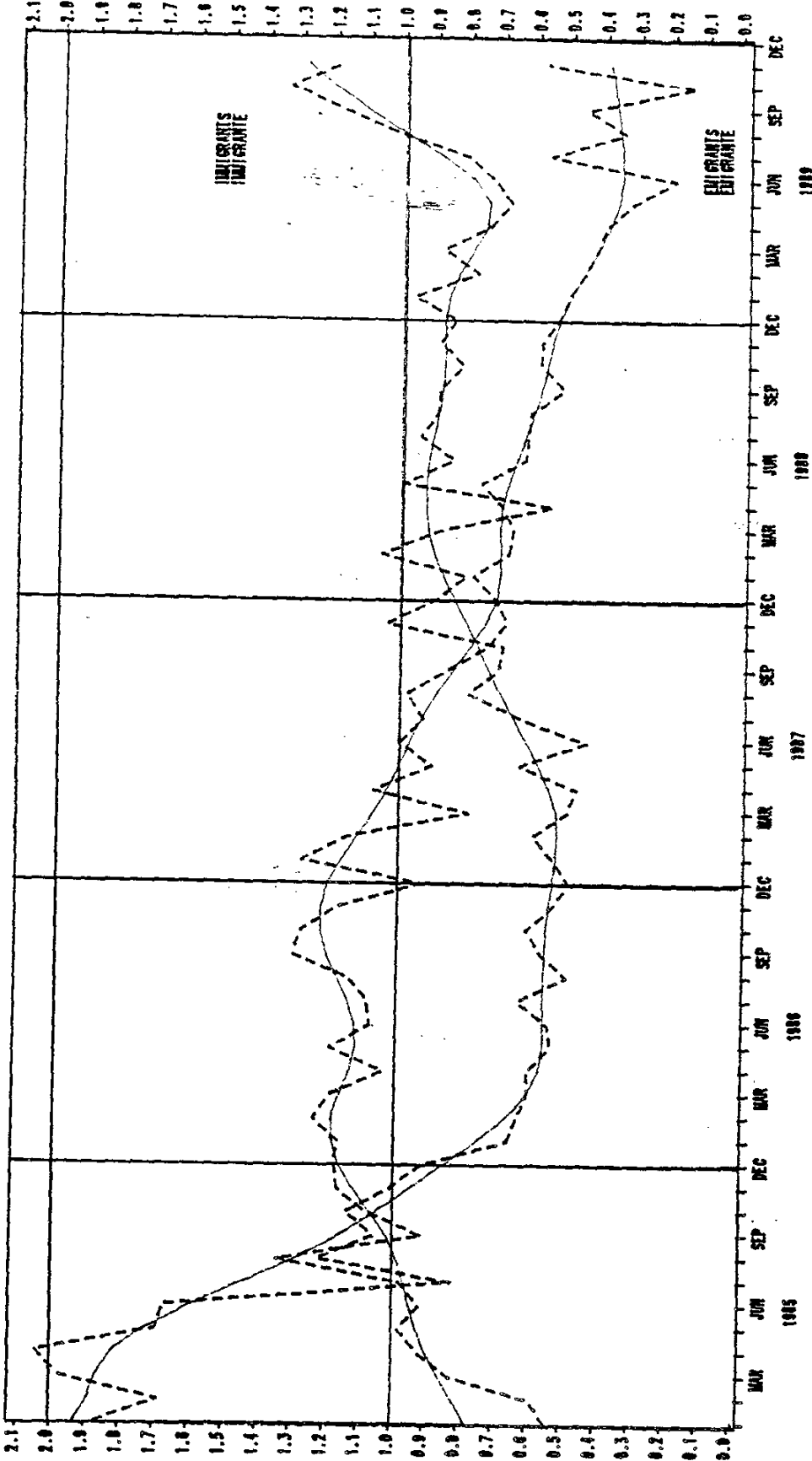
PO351

VREEMDE BESOEKERS : AANKOMS
DUISEND

FOREIGN VISITORS : ARRIVALS
THOUSAND



Seasonally adjusted --- Saisoensaangepas
Trend cycle ---- Tendenssiklus



Seasonally adjusted ——— Saisonallyangepas
 Trend cycle ——— Tendensalktus

1. TOURISM
 1.1 Arrivals and departures of foreign visitors and South African residents
 1.1.1 Purpose of visit

P0351

Purpose of visit	Nov.		Jan. - Nov.		Year - Jaar		Doel van besoek
	1989	1988	1989	1988	1988	1988	
	(a) ARRIVALS: GRAND TOTAL (1) Foreign visitors - Total . Actual data . Seasonally adjusted data . Business . Holiday, including persons transit . Study (11) South African residents returning	121 524	106 892	1 356 314	1 185 995	1 336 748	
(b) DEPARTURES: GRAND TOTAL (1) Foreign visitors (11) South African residents departing temporarily - . Total . Business . Holiday . Study	109 249 74 168	104 487 66 522	1 296 402 808 162	1 186 169 708 096	1 342 693 785 940	1 342 693 785 940	(b) VERTREK: GROOTTOTAAL (1) Vreemde besoekers Suid-Afrikaanse inwoners wat tydelik vertrek - . Totaal . Besigheid . Vakansie . Studie

1. TOURISM
 1.1 Arrivals and departures of foreign visitors and South African residents
 1.1.2 Mode of travel

Arrivals and departures	Nov. 1989						Aankoms en vertrek
	Mode of travel - Myse van reis						
	Total Totaal	Air - Lug	Rail - Spoor	Road - Pad	Sea - See		
(a) ARRIVALS: (1) Foreign visitors (11) South African residents	84 185 37 339	48 378 27 248	675 172	34 458 9 586	674 333		(a) AANKOMS (1) Vreemde besoekers (11) Suid-Afrikaanse inwoners
(b) DEPARTURES: (1) Foreign visitors (11) South African residents	74 168 35 081	39 275 25 186	663 214	33 614 9 404	616 277		(b) VERTREK: (1) Vreemde besoekers (11) Suid-Afrikaanse inwoners

1. TOURISM
 1.2 Foreign visitors
 1.2.1 Arrivals by country of residence
 and mode of travel

1. TOURISME
 1.2 Vreemde besoekers
 1.2.1 Aankoms volgens land van verblyf
 en wyse van reis

Country	Foreign visitors - Vreemde besoekers										Land
	Nov.		Mode of travel - Wyse van reis						Jan. - Nov.		
	1988	1989	Air		Rail		Road		Sea		
			Lug	Lug	Spoor	Spoor	Pad	Pad	See	See	
GRAND TOTAL	70 920	84 185	48 378	675	34 458	674	694 368	815 744	GROOTTOTAAL		
AFRIKA:									AFRIKA:		
Botswana	32 278	36 362	8 977	616	27 748	21	363 218	403 833	Botswana	403 833	
Kenya	4 901	4 773	814	3	3 956	-	54 169	55 416	Kenya	55 416	
Lesotho	155	80	67	-	12	1	1 107	1 093	Lesotho	1 093	
Malawi	2 498	2 756	277	-	2 479	-	33 409	33 102	Malawi	33 102	
Mauritius	1 173	1 494	908	3	583	-	11 882	14 042	Mauritius	14 042	
Mozambique	316	332	314	-	17	1	3 922	4 079	Mozambique	4 079	
Swaziland	1 303	1 452	814	12	626	-	12 735	15 738	Swaziland	15 738	
Zambia	5 050	5 058	368	3	4 687	-	58 771	65 608	Zambia	65 608	
Zimbabwe	981	1 139	760	1	378	-	10 242	12 977	Zimbabwe	12 977	
Other	14 205	17 310	2 857	593	13 859	1	159 551	179 794	Other	179 794	
	1 696	1 968	798	1	1 151	18	17 430	21 984		21 984	
ASIA:									ASIA:		
Hong Kong	3 150	4 717	3 933	1	546	237	33 902	45 565	Hong Kong	45 565	
India	98	157	123	-	32	2	1 383	1 874	India	1 874	
Israel	122	176	199	-	22	35	1 188	1 596	Israel	1 596	
Japan	1 241	1 436	1 231	-	204	1	12 121	15 620	Japan	15 620	
Korea	398	590	456	1	61	72	4 462	5 363	Korea	5 363	
Republic of China	112	84	66	-	2	16	745	759	Republic of China	759	
Other	718	1 593	1 423	-	164	6	9 412	14 711	Other	14 711	
	461	681	515	-	61	105	4 591	5 642		5 642	
AMERICAS:									AMERICAS:		
Argentina	4 242	4 652	3 892	5	728	27	47 431	56 234	Argentina	56 234	
Brazil	53	66	64	-	2	-	599	830	Brazil	830	
Canada	178	169	158	-	11	-	1 746	2 556	Canada	2 556	
Chile	784	884	717	2	162	3	7 447	8 930	Chile	8 930	
Colombia	57	79	67	-	11	1	738	1 090	Colombia	1 090	
Mexico	24	45	43	-	2	-	152	208	Mexico	208	
Paraguay	11	14	14	-	-	-	122	190	Paraguay	190	
Peru	9	11	11	-	-	-	87	140	Peru	140	
Uruguay	4	9	9	-	-	-	84	122	Uruguay	122	
VSA	12	5	3	-	-	-	223	173	VSA	173	
Venezuela	3 054	3 309	2 755	3	532	19	35 743	41 335	Venezuela	41 335	
Other	27	30	28	-	-	2	176	243	Other	243	
	29	31	23	-	8	-	314	417		417	

1. TOURISM
1.2 Foreign visitors
1.2.1 Arrivals by country of residence
and mode of travel (concluded)

P0351
1. TOERISME
1.2 Vreemde besoekers
1.2.1 Aankoms volgers land van verblyf
en wyse van reis (afgesluit)

Country	Foreign visitors - Vreemde besoekers											Land
	Nov.		Mode of travel - Wyse van reis						Jan. - Nov.		1989	
	1988	1989	Air		Rail		Road		Sea			
			Lug	Lug	Spoor	Spoor	Pad	Pad	See	See		
EUROPE:	29 502	36 496	30 974	42	5 106	374	234 357	290 083	EUROPA:			
Austria	873	1 288	1 111	-	177	-	6 563	8 349	Oostenryk			
Belgium	860	1 331	1 032	5	291	3	7 063	9 362	België			
Denmark	104	133	105	-	26	2	1 188	1 547	Denemarke			
Finland	63	157	127	-	29	1	501	1 014	Finland			
France	1 431	1 838	1 583	1	244	10	12 022	15 842	Frankryk			
Greece	492	568	473	-	11	84	3 949	4 169	Griekeland			
Ireland	334	344	275	1	68	-	3 087	3 567	Ierland			
Italy	1 187	1 094	960	-	118	16	10 719	13 391	Italië			
Luxembourg	37	38	35	-	3	-	295	366	Luxemburg			
Netherlands	1 343	2 056	1 784	5	253	14	10 487	13 493	Nederland			
Norway	111	74	55	-	11	8	741	1 040	Noorweë			
Portugal	1 197	1 036	972	1	47	16	7 002	8 534	Portugal			
Spain	647	481	319	-	66	96	5 381	5 244	Spanje			
Sweden	195	242	180	-	58	4	1 644	2 037	Swede			
Switzerland	1 894	2 365	1 942	-	422	1	12 038	16 767	Switserland			
UK	11 332	12 927	11 659	21	1 192	55	90 979	109 699	VK			
West Germany	7 036	9 925	7 837	8	2 057	23	58 500	71 824	Wes-Duitsland			
Other	366	599	525	-	33	41	2 198	4 438	Ander			
OCEANIA:	1 421	1 833	1 556	11	256	10	12 820	16 595	OSEANIë:			
Australia	1 156	1 514	1 323	5	180	6	10 401	13 527	Australië			
New Zealand	262	319	233	6	76	4	2 393	3 039	Nieu-Seeland			
Other	3	-	-	-	-	-	26	29	Ander			
UNSPECIFIED	327	125	46	-	74	5	2 640	3 434	ONGESPESIFISEERD			

1. TOURISH
 1.3 South African residents
 1.3.1 Departures by country of destination
 and mode of travel

1. TOERISME
 1.3 Suid-Afrikaanse inwoners
 1.3.1 Vertrek volgens land van bestemming en wyse van reis

P0351

Country	South African residents - Suid-Afrikaanse inwoners										Land		
	Nov.		Mode of travel				Wyse van reis					Jan. - Nov.	
	1988	1989	Air Lug	Rail Spoor	Road Pad	Sea See	1988	1989	1988	1989			
GRAND TOTAL	37 965	35 081	25 186	214	9 404	277	488 240	478 073	488 240				
AFRICA:													
Botswana	19 009	19 733	10 499	211	9 011	12	236 555	207 186	236 555				
Kenya	3 827	3 429	1 962	14	1 453	-	35 832	34 118	35 832				
Lesotho	29	44	43	-	1	-	622	584	622				
Malawi	1 227	1 135	193	-	942	-	11 923	12 946	11 923				
Mauritius	727	817	797	-	20	-	8 782	7 883	8 782				
Mozambique	2 341	2 233	2 233	-	-	-	31 242	30 860	31 242				
Swaziland	736	1 025	996	-	18	11	10 855	7 256	10 855				
Zambia	4 266	3 948	644	-	3 304	-	46 024	42 031	46 024				
Zimbabwe	268	317	303	-	3 449	-	3 964	3 449	3 964				
Other	4 919	5 240	1 923	197	3 120	-	73 722	63 303	73 722				
	669	1 545	1 405	-	139	1	13 589	4 756	13 589				
ASIA:													
Hong Kong	2 930	2 305	2 296	3	3	3	36 911	39 477	36 911				
India	556	322	322	-	-	-	6 165	6 112	6 165				
Israel	499	232	232	-	-	-	2 599	3 905	2 599				
Japan	834	807	807	-	-	-	12 621	14 181	12 621				
Korea	53	154	154	-	-	-	1 278	863	1 278				
Republic of China	5	1	1	-	-	-	61	57	61				
Other	749	575	573	3	2	3	5 325	6 062	5 325				
	234	214	207	-	1	3	8 862	8 297	8 862				
AMERICAS:													
Argentina	1 449	1 489	1 416	-	40	33	20 231	21 226	20 231				
Brazil	28	23	23	-	-	-	217	271	217				
Canada	381	483	483	-	-	-	4 856	3 647	4 856				
Chile	104	84	83	-	-	1	1 508	1 696	1 508				
Colombia	20	22	22	-	-	-	245	267	245				
Mexico	2	1	1	-	-	-	9	19	9				
Paraguay	1	-	-	-	-	-	5	9	5				
Peru	12	11	11	-	-	-	41	89	41				
USA	1	-	-	-	-	-	20	20	20				
Venezuela	898	859	788	-	39	32	13 217	15 101	13 217				
Other	-	2	5	-	1	-	11	21	11				
	2	6	5	-	1	-	86	86	86				

1. TOURISM
 1.3 South African residents
 1.3.1. Departures by country of destination
 and mode of travel (concluded)

1. TOERISME
 1.3 Suid-Afrikaanse inwoners
 1.3.1 Vertrek volgens land van verblyf
 en wyse van reis (afgesluit)

Country	South African residents - Suid-Afrikaanse inwoners									
	Nov.		Mode of travel - wyse van reis					Jan. - Nov.		Land
	1988	1989	Air Lug	Rail Spoor	Road Pad	Sea See	1988	1989		
	Nov. 1989									
EUROPE:	13 151	10 664	10 343	-	298	23	180 662	195 843	180 662	EUROPA:
Austria	108	95	94	-	1	-	1 977	2 165	1 977	Oostenryk
Belgium	261	297	295	-	2	-	4 604	4 417	4 604	België
France	709	511	474	-	37	-	7 664	8 366	7 664	Frankryk
Greece	352	264	263	-	1	-	13 868	13 868	10 380	Griekeland
Italy	782	375	375	-	-	-	9 990	2 724	9 195	Italië
Luxemburg	185	190	190	-	-	-	3 029	9 078	3 029	Luxemburg
Netherlands	602	529	491	-	38	-	7 788	18 726	7 788	Nederland
Portugal	1 124	835	825	-	9	1	16 368	2 031	16 368	Portugal
Spain	36	38	38	-	-	-	815	10 417	815	Spanje
Switzerland	639	705	668	-	37	-	10 797	84 986	10 797	Switserland
UK	6 368	5 038	4 895	-	121	22	81 683	27 121	81 683	VK
West Germany	1 878	1 713	1 665	-	48	-	24 748	1 954	24 748	Wes-Duitsland
Other	107	74	70	-	4	-	1 614	4 766	1 614	Ander
OCEANIA:	740	590	541	-	48	1	4 095	4 271	4 095	OSEANIË:
Australia	650	527	479	-	47	1	3 660	4 487	3 660	Australië
New Zealand	89	62	62	-	-	-	427	8	427	Nieu-See land
Other	1	1	-	-	1	-	8	-	8	Ander
UNSPECIFIED	686	300	91	-	4	205	9 575	9 575	9 786	ONGESPECIFISEERD

2. MIGRATION
 2.1 Immigrants and emigrants
 2.1.1 Summary table

Immigrants and emigrants	Nov.		Jan. - Nov.		Year - Jaar	
	1989	1988	1989	1988	1988	1988
(a) IMMIGRANTS: GRAND TOTAL . Actual data . Seasonally adjusted data (1) Persons who arrived as approved immigrants (11) Persons who after arrival as visitors were approved as immigrants	1 180 1 187 385	884 886 430	10 412 .. 3 473	9 588 .. 3 789	10 400 .. 4 180	
(b) EMIGRANTS . Actual data . Seasonally adjusted data	474 577	483 586	4 465 ..	7 248 ..	7 767 ..	
(c) NET GAIN/LOSS	+706	+401	+5 947	+2 340	+2 633	

2. MIGRATION
 2.1 Immigrants and emigrants
 2.1.2 Mode of travel

Immigrants and emigrants	Total Totaal	Mode of travel - Wyse van reis			
		Air - Lug	Rail - Spoor	Road - Pad	Sea - See
(a) Immigrants 1/	385	340	-	45	-
(b) Emigrants	474	467	-	7	-

.. Not applicable/Nie van toepassing nie.

1/ Persons who arrived as approved immigrants/Personne wat as goedgekeurde immigrante aangekom het.

2. MIGRASIE
 2.1 Immigrante en emigrante
 2.1.1 Opsommingstabel

Immigrante en emigrante

- (a) IMMIGRANTE: GROOTTOTAAL
 . Werklike gegewens
 . Seisoensaangepaste gegewens
 (1) Persone wat as goedgekeurde immigrante aangekom het
 (11) Persone wat na aankoms as besoekers goedgekeur is as immigrante
- (b) EMIGRANTE
 . Werklike gegewens
 . Seisoensaangepaste gegewens
- (c) NETTO AANWINS/VERLIES

2. MIGRASIE
 2.1 Immigrante en emigrante
 2.1.2 Wyse van reis

Immigrante en emigrante

- (a) Immigrante 1/
 (b) Emigrante

2. MIGRATION P0351
 2.2 Migrants by occupations
 2.2.1 Immigrants

Immigrants	Nov.		Jan. - Nov.		Year - Jaar	
	1989	1988	1989	1988	1988	
GRAND TOTAL	1 180	884	10 412	9 588	10 400	
TOTAL - ECONOMICALLY ACTIVE	543	435	4 697	4 630	5 010	
Professional, semi-professional and technical occupations - Total	158	109	1 296	1 278	1 377	
Engineers and related technologists	44	26	342	372	388	
Industrial/Production	2	1	22	8	9	
Chemical	8	-	17	16	17	
Electrical and related	21	5	96	93	94	
Agricultural	-	-	2	11	11	
Mechanical	5	2	39	49	46	
Metallurgical	1	1	8	7	7	
Mining	-	-	14	17	17	
Civil and related	1	2	31	31	39	
Engineers n.e.c.	6	14	113	140	148	
Medical practitioner	3	7	51	58	61	
Medical specialist	-	-	13	7	7	
Dental professions	-	-	4	7	7	
Education and related	19	9	97	113	125	
Accountant and related accounting occupations	5	9	78	76	93	
Other	87	58	711	645	691	
Managerial, executive and administrative occupations	74	53	636	551	610	
Clerical and sales occupations	139	105	1 203	1 005	1 088	
Transport, delivery and communications occupations	3	-	26	28	31	
Service occupations	20	15	175	191	207	
Farming and related occupations	1	-	53	55	57	
Artisan, apprentice and related occupations	107	55	775	629	673	
Production foreman and supervisor, miner and quarry worker, operator, production and related worker	22	13	186	131	135	

Immigrante

GROOTTOTAAL
 TOTAAL - EKONOMIES BEDRYF

Professionele, semi-professionele en tegniese beroepe - Totaal
 Ingenieurs- en verwante tegnologiese Bedryf/Produksie
 Chemies
 Elektries en verwant
 Landbou
 Meganies/Merktuigkundig
 Metallurgies
 Mynbou
 Siviel en verwant
 Ingenieurs n.e.g.
 Mediese praktisyen
 Mediese spesialis
 Tandheelkundige beroepe
 Onderwys- en verwante beroepe
 Rekenmeester- en verwante rekeningskundige beroepe
 Ander

Bestuurs-, uitvoerende en administratiewe beroepe

Klerklike en verkoopsberoepe

Vervoer-, aflewering- en kommunikasieberoepe

Diensberoepe

Boerdery- en verwante beroepe

Ambagsman-, vakleerling- en verwante beroepe

Produksievoorman en -toesighouer, myn- en steengroefwerker, operateur, produkte- en verwante werker

2. MIGRATION
 2.2 Migrants by occupations
 2.2.1 Immigrants (concluded)

P0351
 2. MIGRASIE
 2.2 Migrante volgens beroepe
 2.2.1 Immigrante (afgesluit)

Immigrants	Nov.		Jan. - Nov.		Year - Jaar		Immigrante
	1989	1988	1989	1988	1989	1988	
	Occupation unspecified and n.e.c.	19	85	347	762	832	
TOTAL - NOT ECONOMICALLY ACTIVE	637	449	5 715	4 958	5 390		TOTAAL - NIE-EKONOMIES-BEDRYWIG
House-keeping	268	181	2 249	2 052	2 206		Tuisteskepper
Child - not scolar	87	98	952	948	1 026		Kind - nie skooler
Scholar/Student	146	58	1 504	976	1 083		Skooler/Student
Labour disabled	-	4	101	111	111		Arbeidsongeskikte
Pensioner	136	108	906	853	943		Pensionaris
Not economically active n.e.c.	-	-	3	18	21		Nie-ekonomies bedrywig n.e.g.

2. TOURISM
2.2 Migrants by occupations
2.2.2 Emigrants

2. MIGRASIE
2.2 Migrante volgens beroepe
2.2.2 Emigrante

Emigrants	Nov.		Jan. - Nov.		Year - Jaar	
	1989	1988	1989	1988	1989	1988
GRAND TOTAL	474	483	4 465	7 248	7 767	
TOTAL - ECONOMICALLY ACTIVE	274	232	2 143	3 223	3 496	
Professional, semi-professional and technical occupations - Total	116	85	955	1 279	1 396	
Engineers and related technologists	18	18	213	268	286	
Industrial/Production	-	-	12	15	17	
Chemical	-	1	8	8	8	
Electrical and related	10	2	50	48	48	
Agricultural	-	-	-	9	9	
Mechanical	-	2	11	13	15	
Metallurgical	-	-	-	2	2	
Mining	3	1	8	9	10	
Civil and related	2	3	21	40	44	
Engineers n.e.c.	3	9	103	124	133	
Medical practitioner	1	2	33	58	60	
Medical specialist	-	-	4	13	13	
Dental professions	1	1	3	7	13	
Education and related occupations	22	5	133	171	194	
Accountant and related accounting occupations	13	6	100	145	172	
Other	61	52	469	617	658	
Managerial, executive and administrative occupations	23	16	193	342	360	
Clerical and sales occupations	63	35	442	658	693	
Transport, delivery and communications occupations	1	-	15	21	23	
Service occupations	4	7	46	70	76	
Farming and related occupations	1	3	14	14	14	
Artisan, apprentice and related occupations	40	37	258	390	415	
Production foreman and supervisor, miner and quarry worker, operator, production and related worker	10	7	44	61	64	
GRAND TOTAAL						
TOTAAL - EKONOMIES BEDRYWIG						
Professionele, semi-professionele en tegniese beroepe - Totaal						
Ingenieurs- en verwante tegnologie Bedryf/Produkste						
Chemies						
Elektries en verwant						
Landbou						
Meganies/Werktuigkundig						
Metallurgies						
Myrbou						
Siviel en verwant						
Ingenieurs n.e.g.						
Mediese praktisyn						
Mediese spesialist						
Tandheelkundige beroepe						
Onderwys- en verwante beroepe						
Rekenmeester- en verwante rekeningkundige beroepe						
Ander						
Bestuurs-, uitvoerende en administratiewe beroepe						
Klerklike en verkoopsberoepe						
Vervoer-, aflewering- en kommunikasieberoepe						
Diensberoepe						
Boerdery- en verwante beroepe						
Ambagsman-, vakleerling- en verwante beroepe						
Produksievoorman en toesighouer, myn- en steengroefwerker, operateur, produksie- en verwante werker						

2. MIGRATION 2.2 Migrants by occupations 2.2.2 Emigrants (concluded)	2. MIGRASIE 2.2 Migrante volgens beroepe 2.2.1. 2.2.2 Emigrante (afgesluit)					
	Immigrants		Jan. - Nov.		Year - Jaar	
	1989	1988	1989	1988	1988	1988
Immigrants						
Occupation unspecified and n.e.c.	16	42	176	388		455
TOTAAL - NOT ECONOMICALLY ACTIVE	200	251	2 322	4 025		4 271
House-keeping	88	86	810	1 249		1 317
Child - not scholar	38	105	715	1 599		1 681
Scholar/Student	48	42	531	786		859
Labour disabled	1	-	2	-		-
Pensioner	21	18	258	379		394
Not economically active n.e.c.	4	-	6	12		20
Beroep ongespesifiseerd en n.e.g.						
TOTAAL - NIE-EKONOMIES BEDRYWIG						
Turisteskepper						
Kind - nie skoolier						
Skoolier/Student						
Arbeidsongeskikte						
Pensionar'is						
Nie-ekonomies bedrywig n.e.g.						

2. MIGRATION
2.3 Immigrants by country of previous permanent residence and emigrants by country of destination and citizenship

2. MIGRASIE
2.3 Immigrante volgens land van vorige permanente verblyf en emigrante volgens land van bestemming en burgerskap

Country	Migration - Migrasie						Land
	Immigrants Immigrante			Emigrants - Emigrante			
	Destination Bestemming			Citizenship Burgerskap			
	Nov. 1989	Jan. - Nov. 1989	Nov. 1989	Nov. 1989	Jan. - Nov. 1989	Nov. 1989	
GRAND TOTAL	1 180	9 588	10 412	474	7 248	4 465	474
AFRIKA:							GROOTTOTAAL
Botswana	304	3 141	2 829	19	204	206	276
Kenya	17	68	105	-	16	4	-
Lesotho	1	17	6	1	1	1	-
Malawi	9	71	113	2	7	2	1
Mauritius	8	62	63	-	7	10	-
Mozambique	2	48	47	1	21	22	3
RSA	8	54	72	-	4	2	-
Swaziland	-	-	-	-	-	-	267
Zambia	18	102	116	-	-	1	-
Zimbabwe	16	151	168	-	2	5	-
Other	171	2 266	1 763	12	138	144	4
	54	302	376	3	15	15	1
ASIA:							
Hong Kong	151	766	1 228	8	267	90	2
India	1	23	32	-	8	3	-
Israel	12	58	116	3	1	4	-
Japan	89	262	526	2	248	66	-
Korea	-	19	8	3	-	3	2
Republic of China	-	12	2	-	-	-	-
Other	28	268	413	-	2	-	-
	21	124	131	-	8	14	-
AMERICAS:							
Argentina	63	515	549	63	967	610	10
Brazil	1	33	21	1	6	3	1
Canada	6	34	54	-	8	-	-
Chile	11	105	92	37	662	406	3
Colombia	1	68	20	4	3	6	2
Mexico	-	1	1	-	-	-	-
Paraguay	-	-	1	-	-	2	-
Peru	5	-	15	2	-	2	-
Uruguay	1	5	12	-	-	-	-
USA	30	228	281	19	1	-	-
Venezuela	8	35	48	-	287	153	4
Other	-	6	4	-	-	38	-

2. MIGRASIE
2.3 Immigrante volgens land van vorige permanente verblyf en emigrante volgens land van bestemming en burgerskap (afgesluit)

Country	Migration - Migrasie										
	Immigrants Immigrante					Emigrants - Emigrante					Land
	Nov.		Jan. - Nov.			Nov.		Jan. - Nov.			
	1989	1988	1989	1988	1989	1988	1989	1988	1989	1989	
EUROPE:	650	4 952	5 573	208	2 742	1 719	178	EUROPA:			
Austria	30	85	143	7	26	29	1	Oostenryk			
Belgium	19	81	124	11	45	45	10	België			
Denmark	6	17	21	1	7	11	1	Denemarke			
Finland	-	8	9	-	2	-	-	Finland			
France	12	99	90	-	25	12	-	Frankryk			
Greece	15	98	132	2	12	7	1	Griekeland			
Ireland	21	165	126	-	41	17	2	Ierland			
Italy	17	97	115	-	26	15	1	Italië			
Luxemburg	-	1	2	-	7	5	-	Luxemburg			
Netherlands	17	137	127	16	94	55	12	Nederland			
Norway	-	4	3	-	7	1	-	Noorweë			
Portugal	116	739	941	-	20	17	-	Portugal			
Spain	-	38	32	3	8	19	-	Spanje			
Sweden	-	12	11	3	8	13	2	Swede			
Switzerland	1	79	66	8	59	55	4	Switserland			
UK	298	2 684	2 902	141	2 202	1 290	133	VK			
West Germany	36	515	425	16	148	110	11	Wes-Duitsland			
Other	62	93	304	-	5	18	-	Ander			
OCEANIA:	12	175	171	176	2 597	1 240	8	OSEANIë:			
Australia	9	132	128	168	2 425	1 157	6	Australië			
New Zealand	3	43	43	8	172	83	2	Nieu-Seeland			
Other	-	-	-	-	-	-	-	Ander			
UNSPECIFIED	-	39	62	-	471	600	-	ONGESPESIFIEERD			