



# Tourism and migration

## March 2006

**Embargoed until:  
04 July 2006  
11:00**

---

Published by  
Statistics South Africa  
Private Bag X44  
Pretoria  
0001

© Copyright, 2006

Users may apply or process this data, provided Statistics South Africa is acknowledged as the original source of the data; that it is specified that the application and/or analysis is the result of the user's independent processing of the data; and that neither the basic data nor any re-processed version or application thereof may be sold or offered for sale in any form whatsoever without prior permission from Stats SA.

## **CONTENTS**

### **KEY FINDINGS**

1	Foreign travellers	1
2	Ports of entry and modes of travel used by overseas and mainland Africa travellers	1
2.1	Overseas travellers	1
2.2	Mainland Africa travellers	1
3	Purpose of visit	2
4	Leading source countries of overseas and mainland Africa travellers	2
5	Historical trends in travel	2
6	South African residents	2

### **EXPLANATORY NOTES**

1	Sources of data	3
2	Glossary of terms	3
3	Symbols and abbreviations used	3

### **GRAPHICS**

4-7

### **TABLES**

#### **1 TRAVELLERS**

1.1	Arrivals and departures of foreign travellers	
1.1.1	Purpose of visit	8
1.1.2	Mode of travel	8
1.2	Foreign travellers	
1.2.1	Arrivals by country of residence and mode of travel	9
1.2.2	Arrivals by country of residence and purpose of visit	12

### **GENERAL INFORMATION**

15

**Note:** The Department of Home Affairs is in the process of re-introducing the collection of information on arrivals and departures of South African citizens and permanent residents at the three international airports (Johannesburg, Cape Town and Durban). This will enable the availability of statistics on arrivals and departures of South African residents through the three international airports.

The release provides information on travellers. Due to unavailability of data from suppliers, information on documented immigrants is not included in this release. The March 2006 documented immigration information will be provided as soon as it is made available to Stats SA.

It is important to note that travellers include (a) same day visitors and tourists of which some might be in transit; and (b) other travellers such as migrant workers from other countries paid in South Africa, diplomats and so forth.

## **KEY FINDINGS**

### **1. Foreign travellers**

The total number of foreign travellers who visited South Africa from mainland Africa, overseas and unspecified countries, arriving through all ports of entry during March 2006 was **677 427**. The March 2006 figure represents an increase of 8,6% when compared with the March 2005 figure of 623 978 (see Table 1.1.1). The number of foreign travellers who departed from South Africa in March 2006 was **621 304**, which increased by 8,0% from 575 097 recorded in March 2005.

During March 2006, the most common mode of travel used by foreign travellers arriving in South Africa was road, involving 462 006 (68,2%) of total travellers, followed by air, involving 198 395 (29,3%) travellers (see Table 1.1.2). Of the total number of foreign travellers arriving by air, 145 524 (73,3%) arrived through Johannesburg International Airport while 51 612 (26,0%) arrived through Cape Town International Airport, 318 (0,2%) arrived through Durban International Airport and the rest, 941 (0,5%), arrived through other airports (see Table 1.1.2). Those arriving by rail, sea and unspecified modes of travel were 17 026 (2,5%).

Among the total number of foreign travellers departing from South Africa, road was the most common mode of travel (411 743 representing 66,3%), followed by air (208 249 representing 33,5%). Of the total number of foreign travellers departing by air, 145 502 (69,9%) departed from Johannesburg International Airport, 61 421 (29,5%) departed from Cape Town International Airport, 454 (0,2%) used Durban International Airport and the rest, 872 (0,4%), departed through other airports (see Table 1.1.2). Those departing by rail, sea and unspecified modes of travel were 1 312 (0,2%). Figures 1a and 1b show the breakdown of air arrivals and departures, respectively, according to the airport used. It is observed that the distribution of air arrivals by port of entry and air departures by port of exit are almost the same.

### **2. Ports of entry and modes of travel used by overseas and mainland Africa travellers**

#### **2.1 Overseas travellers**

Table 1.2.1 shows that during March 2006, **188 267** overseas travellers visited South Africa. This represents a 1,6% decrease in the volume of overseas travellers as compared to March 2005 when there were 191 350 overseas travellers. Note that the Easter holidays in 2005 were in March, whereas in 2006 they fell in April.

It is further observed that in March 2006, there were 164 719 air arrivals from overseas, which accounts for 87,5% of all overseas arrivals. Of these overseas air arrivals, 114 028 (69,2%) arrived through Johannesburg International Airport; 49 837 (30,3%) arrived through Cape Town International Airport; 225 (0,1%) arrived through Durban International Airport and the rest, 629 (0,4%), arrived through other airports.

The number of overseas travellers arriving by road during March 2006 was 21 155 (11,2%). The number of those arriving by rail, sea and unspecified mode of travel was 2 393 (1,3%). (An excel spreadsheet on the mode of travel for all countries of origin is available on request.)

#### **2.2 Mainland Africa travellers**

Table 1.2.1 further shows that the total number of travellers who arrived in South Africa from mainland Africa during March 2006 was **486 246**, as compared to the March 2005 figure of 426 294, representing an increase of 14,1%. Of these travellers from mainland Africa, the number arriving by road was 440 191 (90,5%).

In March 2006, there were 32 842 (6,8%) air travellers arriving from mainland Africa. Of these air arrivals, 30 734 (93,6%) arrived through Johannesburg International Airport, 1 717 (5,2%) arrived through Cape Town International Airport, 92 (0,3%)

arrived through Durban International Airport while the rest, 299 (0,9%), arrived through other airports. The number of travellers from mainland Africa arriving by rail, sea and unspecified mode of travel was 13 213, which constituted 2,7% of all travellers from Mainland Africa.

### 3. Purpose of visit

**Overseas travellers:** Of the 188 267 overseas travellers visiting South Africa during March 2006, 172 881 (91,8%) stated that they were in South Africa for holidays while 7 935 (4,2%) stated that they were on business trips (see Table 1.2.2). Overseas travellers arriving for the purpose of work (including contract work) were 5 156 (2,7%), those on transit were 1 255 (0,7%), those visiting for the purpose of study were 646 (0,3%) and those with border traffic concession were 393 (0,2%). (An excel spreadsheet on the purpose of visit for all countries of origin is available on request.)

**Mainland Africa travellers:** Of the 486 246 travellers from mainland Africa visiting South Africa during March 2006, the majority 450 757 (92,7%) stated that they were in South Africa for holidays while 10 259 (2,1%) stated that they were on business trips. A further breakdown of travellers from mainland Africa is as follows: those visiting for the purpose of study were 6 991 (1,4%), those arriving for the purpose of work (including contract work) were 3 068 (0,6%), those with border traffic concession were 11 945 (2,5%) and travellers on transit were 3 161 (0,7%), as shown in Table 1.2.2.

### 4. Leading source countries of overseas and mainland Africa travellers

**Overseas travellers:** Figure 2a indicates that during March 2006, the number of travellers from the UK visiting South Africa was 50 210 (26,7%), making it the leading country of origin of overseas travellers. This was followed by travellers from Germany, 24 927 (13,2%) and the USA, 21 642 (11,5%). Other main countries of origin of overseas travellers were: France, 9 855 (5,2%); Netherlands, 8 770 (4,7%); Australia, 7 696 (4,1%); Canada, 4 931 (2,6%) and Sweden, 4 063 (2,2%). Upon comparing the figures of March 2006 with those of March 2005 (see Figure 2b), the highest increase in the number of arrivals from these leading source countries was for Australia, (17,0% increase from 6 576 in 2005 to 7 696 in 2006). The highest percentage of the decrease in the number of travellers was observed for travellers from Germany (9,7% decrease from 27 613 in 2005 to 24 927 in 2006).

**Travellers from mainland Africa:** During March 2006, the top eight countries (Figure 3a) in mainland Africa from which travellers arriving in South Africa came were: Lesotho, 152 653 (31,4%); Zimbabwe, 78 021 (16,0%); Swaziland, 76 083 (15,6%); Mozambique, 67 294 (13,8%); Botswana, 56 831 (11,7%); Namibia, 18 094 (3,7%); Zambia, 12 384 (2,5%) and Malawi, 9 775 (2,0%). When comparing arrival figures from the leading source countries from mainland Africa, (see Figure 3b) for March 2005 and March 2006, the highest increase in the number of travellers was from Mozambique, (96,2% increase from 34 305 in 2005 to 67 294 in 2006). The highest percentage of the decrease in the number of travellers was observed for travellers from Botswana (22,1% decrease from 72 963 in 2005 to 56 831 in 2006).

### 5. Historical trends in travel

It should be borne in mind that there is often a substantial month-to-month variation in travelling figures, and one needs to look at a longer period of several months to be able to detect any trends and patterns. The trend regarding the number of overseas travellers arriving in South Africa since 2001 is shown in Figure 4. Although the figure shows evidence of seasonal fluctuations, the level of overseas travel over the period has shown an upward trend since 2001.

### 6. South African residents

During March 2006, the most common mode of travel used by South African residents arriving in South Africa was road, involving 181 151 (59,2%) travellers, followed by air, 122 546 (40,1%) and those arriving by rail, sea and unspecified modes of travel, 2 250 (0,7%). The most common mode of travel for South African residents departing was road, involving 187 950 (58,4%) travellers, followed by air, 133 553 (41,5%) and those departing by rail, sea and unspecified modes of travel, 474 (0,1%) as shown in Table 1.1.2.

**PJ Lehohla**  
**Statistician-General**

## EXPLANATORY NOTES

### 1. Sources of data

Legal movements across South African borders as well as legal immigration into South Africa fall under the jurisdiction of the Department of Home Affairs (DHA). Information on tourism and documented immigration is obtained from all ports of entry. Information on arrivals into and departures from South Africa is captured by DHA and loaded onto the mainframe at State Information Technology Agency (SITA). Stats SA accesses this data remotely, which is then used as part of the input data for this report. Information on legal immigrants to South Africa is sent to Stats SA on computer printout from DHA. The information on the printout is coded and captured by data capturing staff at Stats SA.

The Department of Home Affairs is in the process of re-introducing the collection of information on arrivals and departures of South African citizens at ports of entry and exit. This will enable the availability of statistics on South African arrivals and departures through the three international airports (Johannesburg, Cape Town and Durban).

### 2. Glossary of terms

Key terms used in this release are defined as follows:

**Tourism** comprises the activities of persons travelling to and staying in places outside their usual environment for not more than one consecutive year for leisure, business and other purposes not related to the exercise of an activity remunerated from within the place visited. The usual environment of a person consists of a certain area around his/her place of residence plus all other places s/he frequently visits.

A **tourist** (overnight visitor) is a visitor who stays at least one night in collective or private accommodation in the place visited. An international tourist is an international visitor who stays at least one night in collective or private accommodation in the country visited. A domestic tourist refers to a domestic visitor who stays at least one night in collective or private accommodation in the place visited.

**Traveller** is any person on a trip between two or more localities. An **international traveller** refers to any person on a trip between two or more localities in different countries.

**Visitor** refers to any person travelling to a place other than that of his/her usual environment for less than 12 consecutive months and whose main purpose of the trip is other than the exercise of an activity remunerated from within the place visited.

An **international visitor** is any person travelling to a country other than the one in which s/he has his/her usual residence, but outside his/her usual environment, for less than 12 consecutive months and whose main purpose of the trip is other than the exercise of an activity remunerated from within the place visited.

**Overseas traveller** refers to a foreign traveller visiting South Africa (SA), excluding travellers from mainland Africa and from 'unspecified' countries.

**Foreign traveller** refers to a person who resides outside SA and visits the country temporarily.

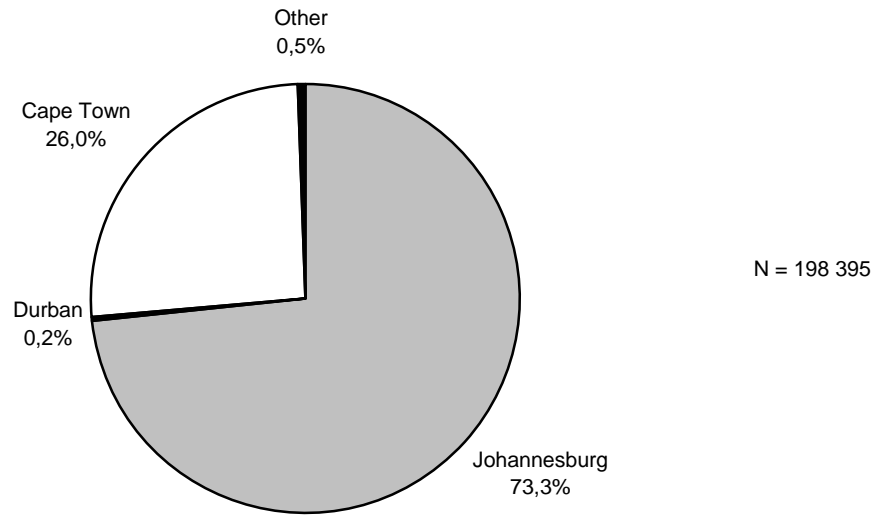
**South African resident** refers to South African citizens and/or any person with permanent residential permit.

### 3. Symbols and abbreviations used

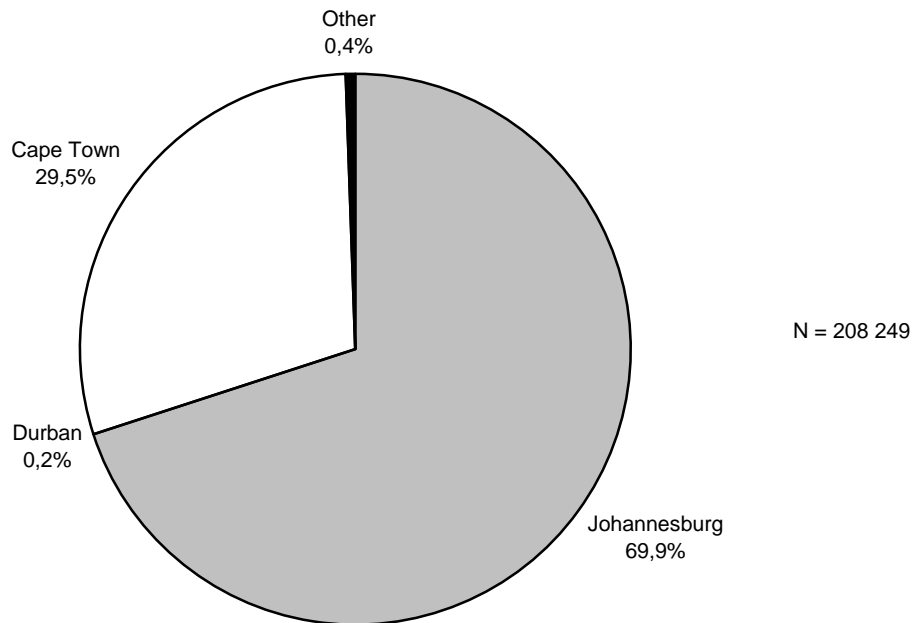
- = nil

.. = not applicable

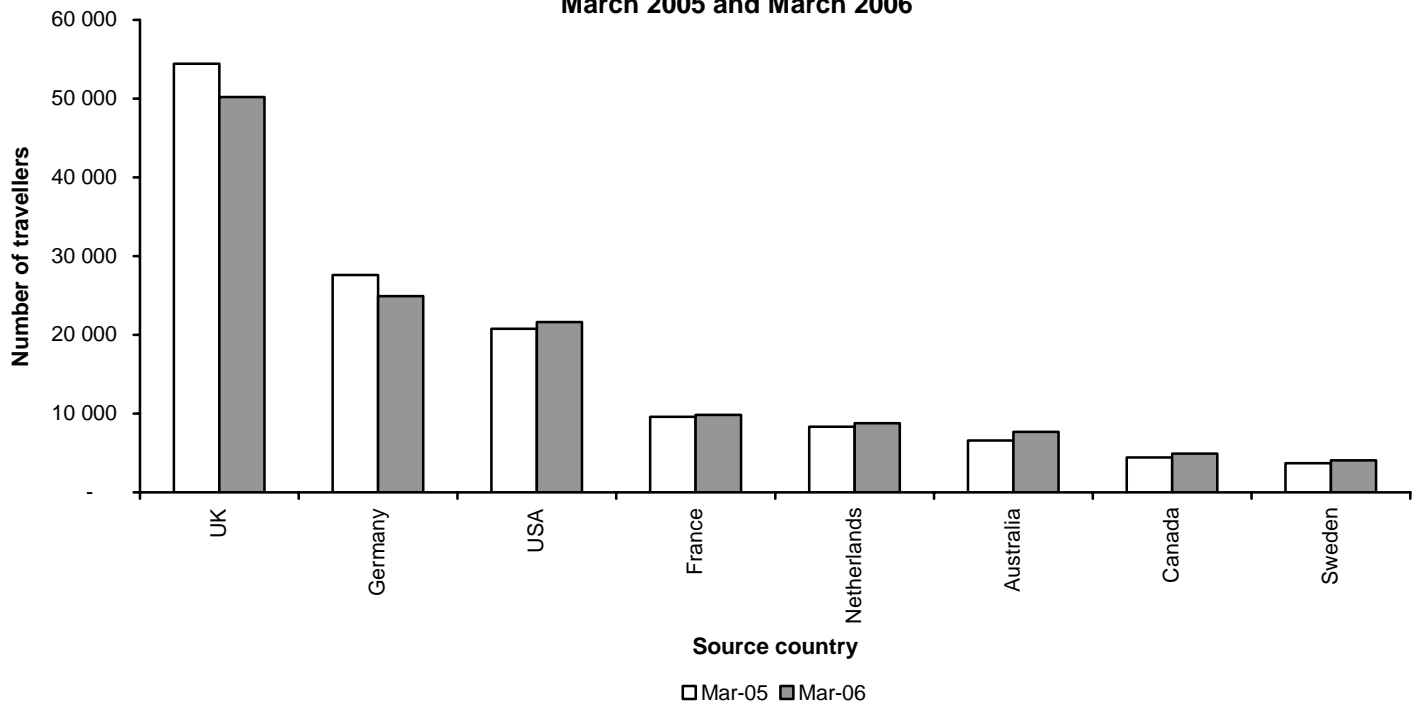
**Fig 1a: Air arrivals by port of entry, South Africa, March 2006**



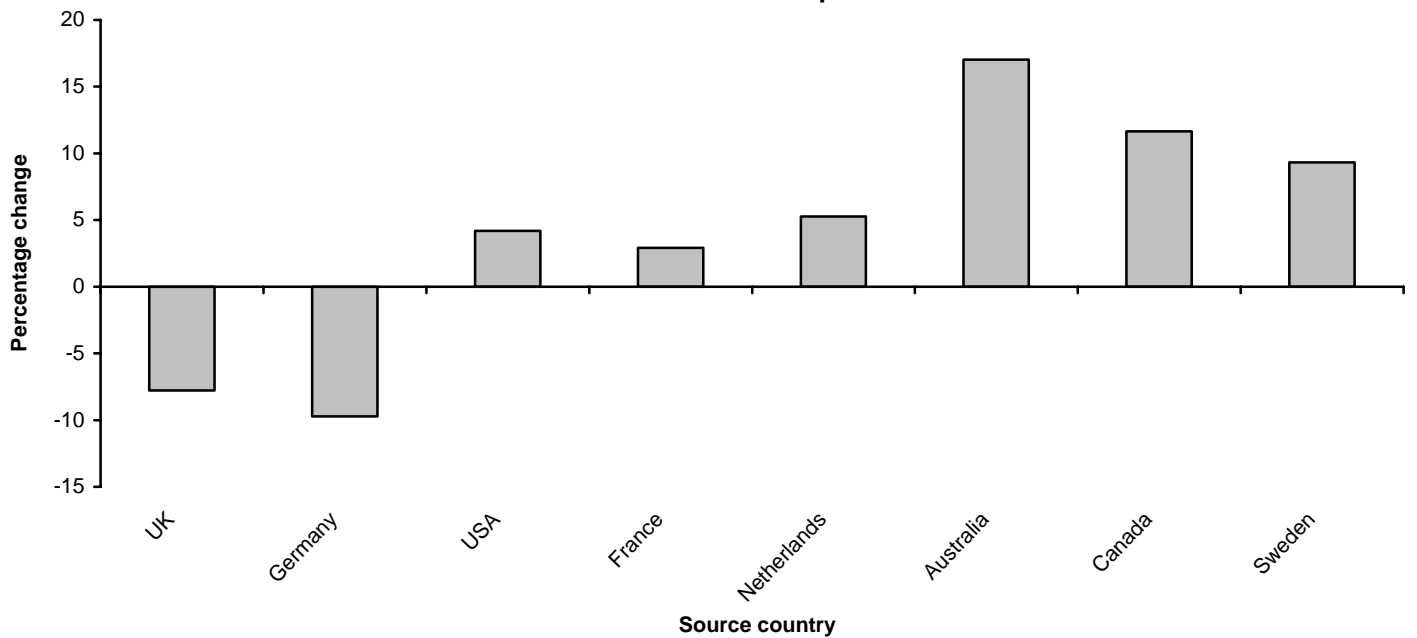
**Fig 1b: Air departures by port of exit, South Africa, March 2006**



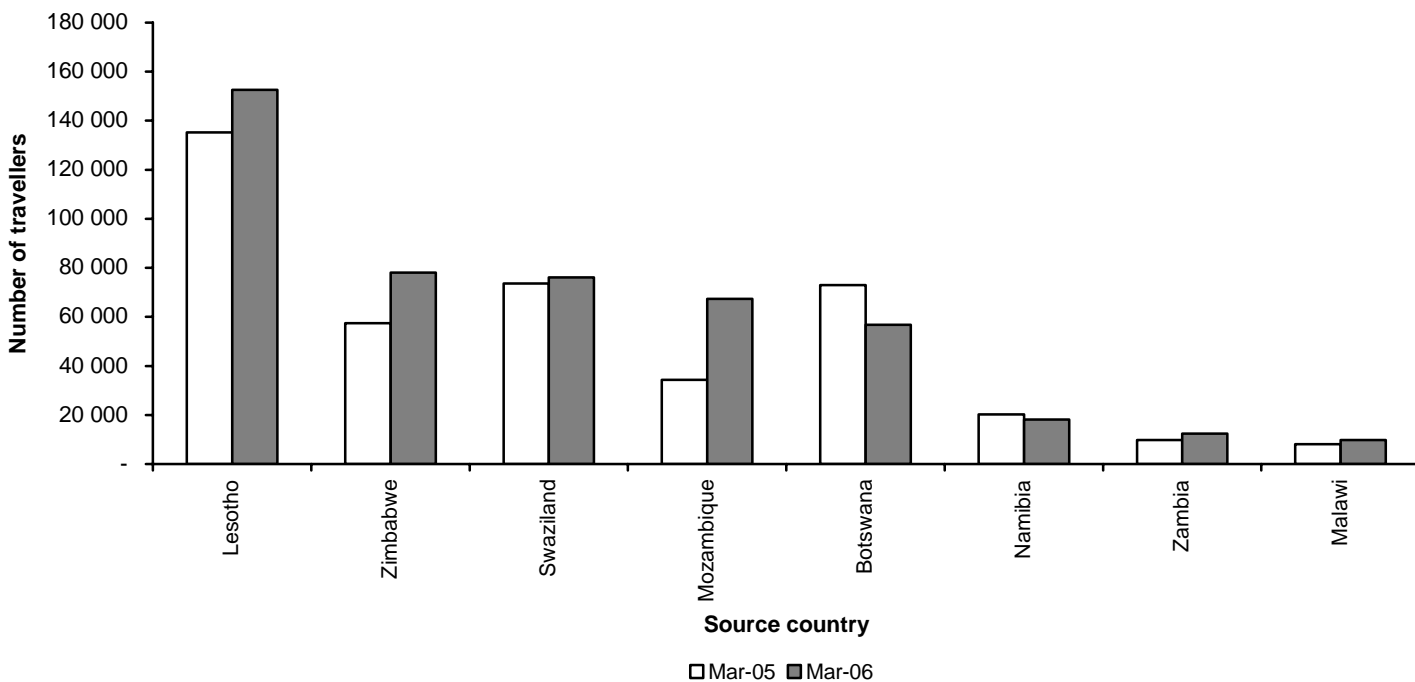
**Fig. 2a: The number of overseas travellers arriving from leading source countries in March 2005 and March 2006**



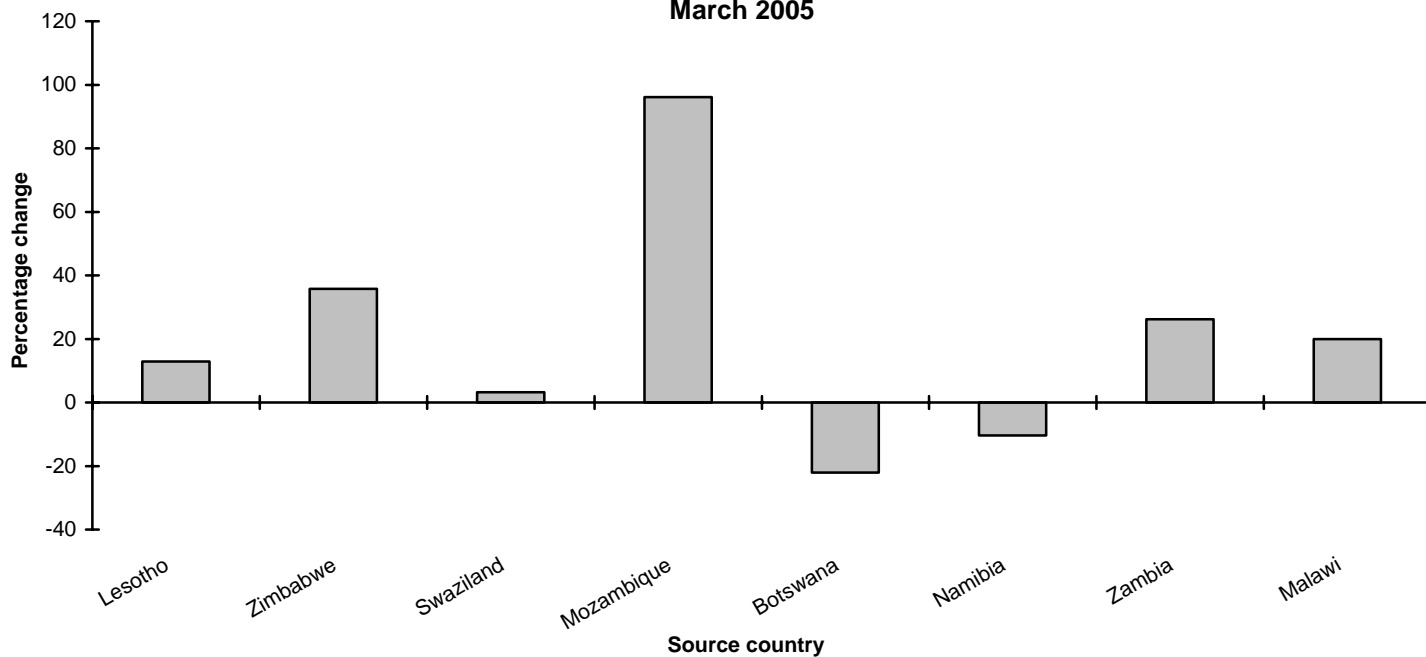
**Fig. 2b: Percentage change in number of overseas travellers arriving from leading source countries in March 2006 compared with March 2005**



**Fig. 3a: The number of travellers from mainland African countries arriving from leading source countries in March 2005 and March 2006**

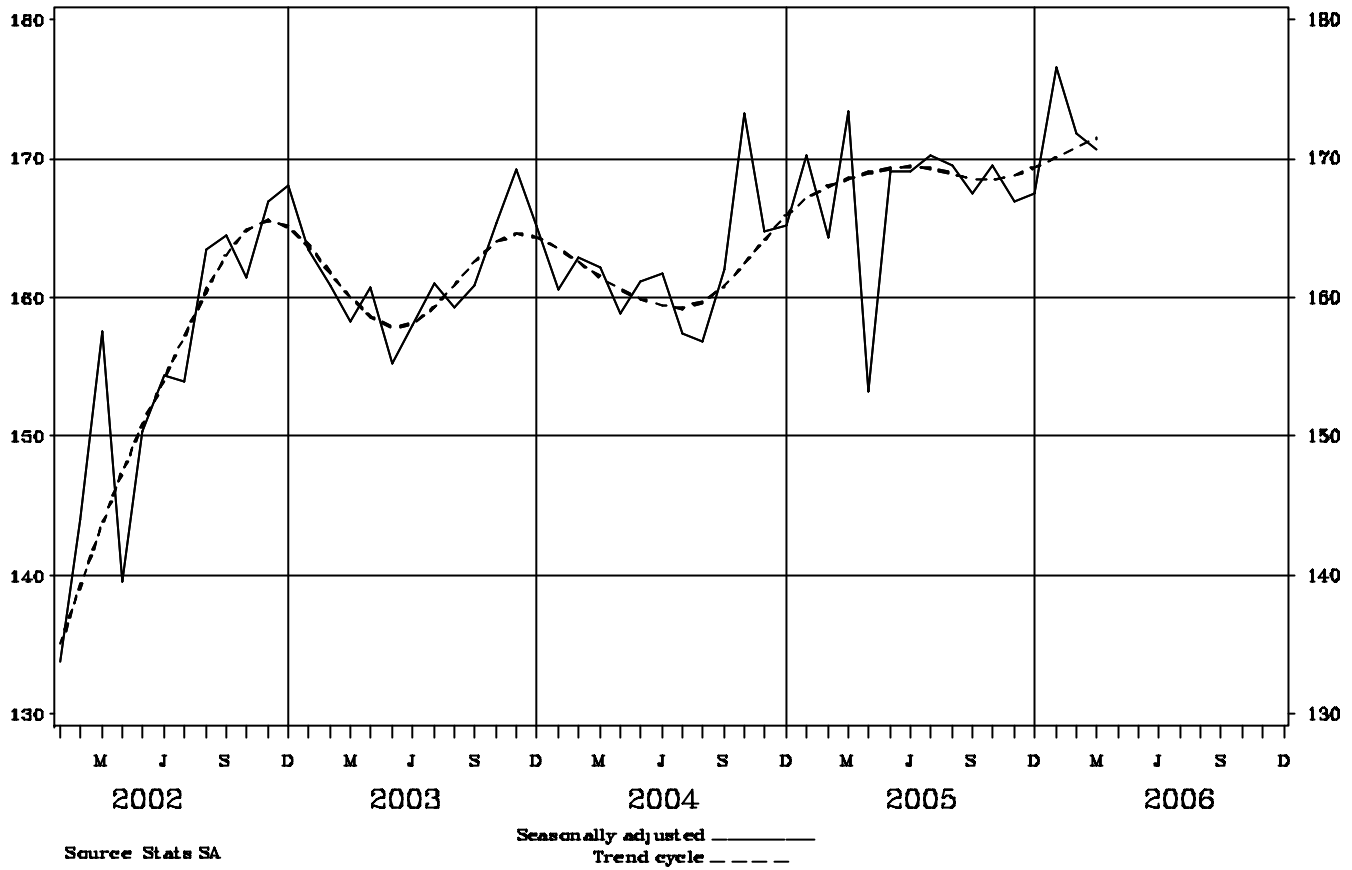


**Fig. 3b: Percentage change in the number of travellers from mainland African countries arriving from leading source countries in March 2006 compared with March 2005**





**Fig 4: Overseas Travellers – Arrivals**  
Thousands



1. TRAVELLERS

1.1 Arrivals and departures of foreign travellers and South African residents

1.1.1 Purpose of visit

Purpose of visit	March		Jan - Mar. Cum. Total		Year
	2005	2006	2005	2006	2005
<b>(a) ARRIVALS:</b>					
1.Foreign travellers					
.Actual data	623 978	677 427	1 836 376	2 052 377	7 518 320
.Seasonally adjusted data	627 250	681 750	..	..	..
.Business	16 589	18 243	49 185	50 994	201 522
.Holiday	566 171	624 560	1 643 794	1 870 686	6 811 647
.Study	7 768	7 717	44 654	42 002	133 041
.Work	7 931	8 564	24 176	27 450	94 679
.Contract workers	5 277	126	16 226	7 837	54 899
.Border traffic concession	14 294	13 728	42 946	39 738	164 087
.Transit	5 840	4 423	14 629	12 894	55 886
.Unspecified	108	66	766	776	2 559
2.South African residents	..	305 947	..	1 017 364	..
<b>(b) DEPARTURES:</b>					
1.Foreign travellers	575 097	621 304	1 638 510	1 782 306	6 728 742
2.South Africans residents	..	321 977	..	875 042	..

1. TRAVELLERS

1.1 Arrivals and departures of foreign travellers and South African residents

1.1.2 Mode of travel

Arrivals and departures	Total	Mode of travel (March 2006)								
		AIR					RAIL	ROAD	SEA	UNSPEC.
		(C/Town)	(Durban)	(J/burg)	(Other)	Total				
<b>(a) ARRIVALS:</b>										
1.Foreign travellers	677 427	51 612	318	145 524	941	198 395	461	462 006	289	16 276
2.South African residents	305 947	14 526	1 065	104 894	2 061	122 546	223	181 151	120	1 907
<b>(b) DEPARTURES:</b>										
1.Foreign travellers	621 304	61 421	454	145 502	872	208 249	675	411 743	107	530
2.South African residents	321 977	16 252	986	114 201	2 114	133 553	40	187 950	145	289

1. TRAVELLERS  
 1.2 Foreign travellers  
 1.2.1 Arrivals by country of residence and mode of travel

Country	Foreign travellers												
	Mode of travel (March 2006)												
	March		AIR					RAIL	ROAD	SEA	UNSPEC.	Jan-Mar. Cum. Total	
	2005	2006	(C/Town)	(Durban)	(J/burg)	(Other)	Total					2006	2005
<b>GRAND TOTAL</b>	623 978	677 427	51 612	318	145 524	941	198 395	461	462 006	289	16 276	2 052 377	1 836 376
<b>OVERSEAS TOTAL</b>	191 350	188 267	49 837	225	114 028	629	164 719	318	21 155	146	1 929	570 963	558 912
<b>EUROPE</b>	135 608	127 817	42 494	110	67 751	376	110 731	302	15 201	68	1 515	401 359	400 551
Austria	1 900	1 880	660	-	1 014	5	1 679	8	193	-	-	6 654	6 700
Belgium	3 880	3 378	1 144	3	1 795	3	2 945	4	424	4	1	9 613	10 709
Denmark	2 294	2 200	438	2	1 484	1	1 925	-	264	1	10	7 795	7 400
France	9 577	9 855	1 049	20	7 405	15	8 489	-	1 354	8	4	28 050	27 318
Germany	27 613	24 927	10 722	6	9 903	24	20 655	257	3 987	7	21	78 446	79 130
Greece	707	635	99	2	442	-	543	-	90	-	2	2 165	2 152
Ireland	4 000	3 198	1 359	3	1 560	3	2 925	1	259	1	12	10 565	11 123
Italy	3 317	3 547	1 243	4	2 000	7	3 254	-	289	-	4	11 381	11 913
Netherlands	8 331	8 770	2 701	8	4 169	29	6 907	1	1 841	7	14	30 423	29 097
Portugal	3 052	2 035	88	8	979	13	1 088	1	942	-	4	6 631	8 014
Spain	2 144	2 072	266	1	1 620	58	1 945	1	126	-	-	5 385	5 047
Sweden	3 717	4 063	1 156	6	2 196	8	3 366	3	691	2	1	14 362	13 062
Switzerland	3 483	3 487	525	1	2 365	47	2 938	5	535	4	5	12 725	11 357
UK	54 437	50 210	18 518	34	26 796	127	45 475	9	3 296	16	1 414	151 974	156 218
Other	7 156	7 560	2 526	12	4 023	36	6 597	12	910	18	23	25 190	21 311
<b>NORTH AMERICA</b>	25 190	26 580	3 994	21	19 708	161	23 884	2	2 597	23	74	68 111	63 509
Canada	4 417	4 931	860	3	3 406	22	4 291	1	618	4	17	13 491	11 779
USA	20 773	21 642	3 133	18	16 299	139	19 589	1	1 976	19	57	54 606	51 730
Other	-	7	1	-	3	-	4	-	3	-	-	14	-
<b>CENTRAL &amp; SOUTH AMERICA</b>	4 174	4 305	660	6	3 226	13	3 905	2	394	1	3	14 378	12 881
Argentina	976	968	473	3	441	-	917	-	51	-	-	3 441	3 313
Brazil	1 711	2 089	23	3	1 895	3	1 924	-	165	-	-	7 026	5 389
Chile	231	198	26	-	145	1	172	-	26	-	-	921	933
Other	1 256	1 050	138	-	745	9	892	2	152	1	3	2 990	3 246

1. TRAVELLERS

1.2 Foreign travellers

1.2.1 Arrivals by country of residence and mode of travel (continued)

Country	Foreign travellers												
	Mode of travel (March 2006)												
	March		AIR					RAIL	ROAD	SEA	UNSPEC.	Jan-Mar. Cum. Total	
	2005	2006	(C/Town)	(Durban)	(J/burg)	(Other)	Total					2006	2005
<b>AUSTRALASIA</b>	8 353	9 055	689	8	7 657	32	8 386	-	592	13	64	23 490	22 264
Australia	6 576	7 696	525	4	6 600	27	7 156	-	466	11	63	19 639	18 126
New Zealand	1 652	1 301	159	4	1 023	5	1 191	-	107	2	1	3 678	3 894
Other	125	58	5	-	34	-	39	-	19	-	-	173	244
<b>MIDDLE EAST</b>	2 745	3 275	234	-	2 839	11	3 084	4	182	-	5	9 959	9 032
Israel	1 231	1 354	35	-	1 244	7	1 286	-	67	-	1	4 101	3 981
Saudi Arabia	134	170	24	-	134	3	161	-	9	-	-	712	1 682
Turkey	552	512	71	-	389	-	460	1	51	-	-	2 119	1 205
Other	828	1 239	104	-	1 072	1	1 177	3	55	-	4	3 027	2 164
<b>ASIA</b>	13 965	15 706	1 462	13	11 830	35	13 340	8	2 056	41	261	49 167	46 240
China	2 557	3 229	386	2	2 464	-	2 852	1	322	5	49	10 601	10 260
Hong Kong	487	403	6	-	390	-	396	-	7	-	-	2 282	2 202
India	3 072	3 521	68	8	2 688	18	2 782	3	617	6	113	10 258	9 269
Japan	1 992	2 366	162	-	2 078	4	2 244	-	111	11	-	6 157	5 650
Malaysia	736	762	218	1	518	-	737	-	25	-	-	2 031	2 056
Philippines	538	613	69	-	411	1	481	-	93	14	25	1 728	1 792
Rep of China (Taiwan)	1 188	827	115	-	433	2	550	-	226	1	50	3 644	3 914
Rep of Korea	966	1 216	84	1	1 014	10	1 109	-	99	-	8	5 004	4 404
Singapore	354	487	127	-	330	-	457	-	28	-	2	1 156	1 311
Other	2 075	2 282	227	1	1 504	-	1 732	4	528	4	14	6 306	5 382

1. TRAVELLERS

1.2 Foreign travellers

1.2.1 Arrivals by country of residence and mode of travel (concluded)

Country	Foreign travellers												
	Mode of travel (March 2006)												
	March		AIR					RAIL	ROAD	SEA	UNSPEC.	Jan-Mar. Cum. Total	
	2005	2006	(C/Town)	(Durban)	(J/burg)	(Other)	Total					2006	2005
<b>INDIAN OCEAN ISLANDS</b>													
Mauritius	1 315	1 529	304	67	1 017	1	1 389	-	133	-	7	4 499	4 435
Other	977	1 261	285	66	794	1	1 146	-	108	-	7	3 591	3 457
	338	268	19	1	223	-	243	-	25	-	-	908	978
<b>MAINLAND AFRICA</b>	426 294	486 246	1 717	92	30 734	299	32 842	142	440 191	114	12 957	1 472 744	1 256 209
Angola	2 190	2 343	89	-	2 137	24	2 250	-	92	-	1	8 227	8 224
Botswana	72 963	56 831	140	3	2 179	81	2 403	5	54 376	4	43	157 955	198 815
Kenya	1 765	1 853	4	-	1 559	7	1 570	7	273	-	3	5 905	5 441
Lesotho	135 215	152 653	2	1	561	1	565	91	139 611	-	12 386	492 172	418 637
Malawi	8 151	9 775	2	-	1 425	5	1 432	4	8 331	1	7	28 680	25 942
Mozambique	34 305	67 294	2	65	1 942	17	2 026	2	65 216	10	40	220 979	102 643
Namibia	20 180	18 094	1 349	-	2 700	13	4 062	1	13 959	70	2	51 563	54 191
Nigeria	2 876	2 486	20	-	2 221	1	2 242	2	227	-	15	7 563	7 354
Swaziland	73 671	76 083	1	20	655	2	678	4	75 216	-	185	219 720	211 190
Zambia	9 812	12 384	4	-	3 942	14	3 960	19	8 399	-	6	36 897	29 993
Zimbabwe	57 482	78 021	21	2	4 750	104	4 877	3	72 885	28	228	216 895	169 835
Other	7 684	8 429	83	1	6 663	30	6 777	4	1 606	1	41	26 188	23 944
<b>UNSPECIFIED</b>	6 334	2 914	58	1	762	13	834	1	660	29	1 390	8 670	21 255

1. TRAVELLERS

1.2 Foreign travellers

1.2.2 Arrivals by country of residence and purpose of visit

Country	Foreign travellers											
	March		Purpose of visit (March 2006)								Contract worker	Border traffic concession
	2005	2006	Visitors/tourists*						Total			
			Business	Holiday	Study	Work	Transit	Unspec.				
<b>GRAND TOTAL</b>	623 978	677 427	18 243	624 560	7 717	8 564	4 423	66	663 573	126	13 728	
<b>OVERSEAS TOTAL</b>	191 350	188 267	7 935	172 881	646	5 155	1 255	1	187 873	1	393	
<b>EUROPE</b>	135 608	127 817	4 884	119 768	314	2 353	393	-	127 712	1	104	
Austria	1 900	1 880	103	1 742	3	27	5	-	1 880	-	-	
Belgium	3 880	3 378	181	3 093	12	88	4	-	3 378	-	-	
Denmark	2 294	2 200	122	2 014	3	46	5	-	2 190	-	10	
France	9 577	9 855	345	9 267	35	196	8	-	9 851	-	4	
Germany	27 613	24 927	843	23 564	59	313	133	-	24 912	-	15	
Greece	707	635	37	569	-	24	4	-	634	1	-	
Ireland	4 000	3 198	103	3 038	10	39	1	-	3 191	-	7	
Italy	3 317	3 547	199	3 302	1	37	4	-	3 543	-	4	
Netherlands	8 331	8 770	252	8 283	59	151	14	-	8 759	-	11	
Portugal	3 052	2 035	25	1 945	12	35	15	-	2 032	-	3	
Spain	2 144	2 072	97	1 927	3	35	10	-	2 072	-	-	
Sweden	3 717	4 063	196	3 769	15	79	3	-	4 062	-	1	
Switzerland	3 483	3 487	113	3 306	10	48	7	-	3 484	-	3	
UK	54 437	50 210	1 771	47 657	57	625	63	-	50 173	-	37	
Other	7 156	7 560	497	6 292	35	610	117	-	7 551	-	9	
<b>NORTH AMERICA</b>	25 190	26 580	952	24 950	73	508	45	-	26 528	-	52	
Canada	4 417	4 931	168	4 639	11	88	14	-	4 920	-	11	
USA	20 773	21 642	783	20 305	62	420	31	-	21 601	-	41	
Other	-	7	1	6	-	-	-	-	7	-	-	
<b>CENTRAL &amp; SOUTH AMERICA</b>	4 174	4 305	113	3 993	30	113	53	-	4 302	-	3	
Argentina	976	968	22	919	1	16	10	-	968	-	-	
Brazil	1 711	2 089	33	1 999	10	28	19	-	2 089	-	-	
Chile	231	198	3	187	1	6	1	-	198	-	-	
Other	1 256	1 050	55	888	18	63	23	-	1 047	-	3	

\*Purpose of visit in this case is not linked to duration of stay therefore these individuals can be either visitors or tourists.

1. TRAVELLERS

1.2 Foreign travellers

1.2.2 Arrivals by country of residence and purpose of visit (continued)

Country	Foreign travellers											
	March		Purpose of visit (March 2006)								Contract worker	Border traffic concession
	2005	2006	Visitors/tourists*						Total			
			Business	Holiday	Study	Work	Transit	Unspec.				
<b>AUSTRALASIA</b>	8 353	9 055	263	8 646	13	115	16	-	9 053	-	2	
Australia	6 576	7 696	239	7 336	11	95	13	-	7 694	-	2	
New Zealand	1 652	1 301	22	1 261	-	15	3	-	1 301	-	-	
Other	125	58	2	49	2	5	-	-	58	-	-	
<b>MIDDLE EAST</b>	2 745	3 275	224	2 895	16	126	10	-	3 271	-	4	
Israel	1 231	1 354	47	1 259	1	43	3	-	1 353	-	1	
Saudi Arabia	134	170	31	132	4	2	1	-	170	-	-	
Turkey	552	512	45	433	2	30	2	-	512	-	-	
Other	828	1 239	101	1 071	9	51	4	-	1 236	-	3	
<b>ASIA</b>	13 965	15 706	1 448	11 200	186	1 925	725	1	15 485	-	221	
China	2 557	3 229	369	1 811	53	636	311	-	3 180	-	49	
Hong Kong	487	403	21	372	-	10	-	-	403	-	-	
India	3 072	3 521	551	2 267	14	397	189	-	3 418	-	103	
Japan	1 992	2 366	126	2 100	10	124	6	-	2 366	-	-	
Malaysia	736	762	44	671	9	23	15	-	762	-	-	
Philippines	538	613	13	244	12	221	107	-	597	-	16	
Rep of China (Taiwan)	1 188	827	95	598	7	84	9	-	793	-	34	
Rep of Korea	966	1 216	58	1 054	41	51	9	-	1 213	-	3	
Singapore	354	487	31	405	-	46	3	-	485	-	2	
Other	2 075	2 282	140	1 678	40	333	76	1	2 268	-	14	

\*Purpose of visit in this case is not linked to duration of stay therefore these individuals can be either visitors or tourists.

1. TRAVELLERS

1.2 Foreign travellers

1.2.2 Arrivals by country of residence and purpose of visit (concluded)

Country	Foreign travellers											
	March		Purpose of visit (March 2006)								Contract worker	Border traffic concession
	2005	2006	Visitors/tourists*						Total			
			Business	Holiday	Study	Work	Transit	Unspec.				
<b>INDIAN OCEAN ISLANDS</b>	1 315	1 529	51	1 429	14	15	13	-	1 522	-	7	
Mauritius	977	1 261	48	1 166	14	13	13	-	1 254	-	7	
Other	338	268	3	263	-	2	-	-	268	-	-	
<b>MAINLAND AFRICA</b>	426 294	486 246	10 259	450 757	6 991	2 943	3 161	65	474 176	125	11 945	
Angola	2 190	2 343	106	2 013	143	50	30	-	2 342	-	1	
Botswana	72 963	56 831	234	52 144	3 483	201	609	-	56 671	117	43	
Kenya	1 765	1 853	120	1 534	67	119	9	1	1 850	-	3	
Lesotho	135 215	152 653	1 153	137 967	689	973	496	-	141 278	-	11 375	
Malawi	8 151	9 775	694	8 982	39	41	6	6	9 768	-	7	
Mozambique	34 305	67 294	583	66 269	222	138	42	-	67 254	-	40	
Namibia	20 180	18 094	2 013	14 116	558	51	1 354	-	18 092	-	2	
Nigeria	2 876	2 486	136	2 110	105	105	13	2	2 471	-	15	
Swaziland	73 671	76 083	339	74 322	859	117	253	-	75 890	8	185	
Zambia	9 812	12 384	1 643	10 500	112	109	15	-	12 379	-	5	
Zimbabwe	57 482	78 021	2 242	74 307	442	670	116	16	77 793	-	228	
Other	7 684	8 429	996	6 493	272	369	218	40	8 388	-	41	
<b>UNSPECIFIED</b>	6 334	2 914	49	922	80	466	7	-	1 524	-	1 390	

\*Purpose of visit in this case is not linked to duration of stay therefore these individuals can be either visitors or tourists.



## General information

Stats SA publishes approximately 300 different statistical releases each year. It is not economically viable to produce them in more than one of South Africa's eleven official languages. Since the releases are used extensively, not only locally but also by international economic and social-scientific communities, Stats SA releases are published in English.

Stats SA has copyright on this publication. Users may apply the information as they wish, provided that they acknowledge Stats SA as the source of the basic data wherever they process, apply, utilise, publish or distribute the data; and also that they specify that the relevant application and analysis (where applicable) result from their own processing of the data.

### Advance release calendar

An advance release calendar is disseminated on [www.statssa.gov.za](http://www.statssa.gov.za)

### Stats SA products

A complete set of Stats SA publications is available at the Stats SA Library and the following libraries:

National Library of South Africa, Pretoria Division  
National Library of South Africa, Cape Town Division  
Natal Society Library, Pietermaritzburg  
Library of Parliament, Cape Town  
Bloemfontein Public Library  
Johannesburg Public Library  
Eastern Cape Library Services, King William's Town  
Central Regional Library, Polokwane  
Central Reference Library, Nelspruit  
Central Reference Collection, Kimberley  
Central Reference Library, Mafikeng

Stats SA also provides a subscription service.

### Electronic services

A large range of data are available via on-line services, diskette and computer printouts. For more details about our electronic data, contact user information services.

You can visit us on the Internet at: [www.statssa.gov.za](http://www.statssa.gov.za)

### Enquiries

Telephone: (012) 310 8600/ 8390/ 8351/ 4892/ 8496/ 8095 (user information services)  
(012) 310 8384 (technical enquiries)  
(012) 310 8161 (orders)  
(012) 310 4883/4885/8018 (library)

Fax: (012) 310 8500/ 8495 (user information services)  
(012) 310 6937 (technical enquiries)

Email: [kennethma@statssa.gov.za](mailto:kennethma@statssa.gov.za) (technical enquiries)  
[info@statssa.gov.za](mailto:info@statssa.gov.za) (user information services)  
[distribution@statssa.gov.za](mailto:distribution@statssa.gov.za) (orders)

Postal address: Private Bag X44, Pretoria, 0001

*Produced by Stats SA*