



**Statistics
South Africa**

Preferred supplier of quality statistics



Statistical release

P0351

Tourism and Migration

June 2006

**Embargoed until:
06 November 2006
11:00**

Enquiries:

User Information Services
Tel.: (012) 310 8600 / 4892 / 8390

Forthcoming issue:

July 2006

Expected release date

16 November 2006

Statistics South Africa • Mbalom-balo ya Afrika Tshipembe • Tihlayo-tiko ta Afrika-Dzonga • Dipalopalo tsa Aforika Borwa • Ezezibalo zaseNingizimu Afrika
Dipalopalo tša Afrika Borwa • Dipalopalo tsa Afrika Borwa • Ubalo lwaseMzantsi Afrika • Telubalo eNingizimu Afrika • iNanimbalo leSewula Afrika • Statistiek Suid-Afrika

email: info@statssa.gov.za
www.statssa.gov.za

170 Andries Street • Private Bag X44, 0001 Pretoria, South Africa
Tel: +27(12) 310 8911, Fax: +27(12) 321 7381

Published by
 Statistics South Africa
 Private Bag X44
 Pretoria
 0001

© Copyright, 2006

Users may apply or process this data, provided Statistics South Africa is acknowledged as the original source of the data; that it is specified that the application and/or analysis is the result of the user's independent processing of the data; and that neither the basic data nor any re-processed version or application thereof may be sold or offered for sale in any form whatsoever without prior permission from Stats SA.

CONTENTS

KEY FINDINGS

| | |
|---|---|
| 1. Foreign travellers | 2 |
| 2. Ports of entry and modes of travel used by overseas and mainland Africa travellers | 2 |
| 2.1 Overseas travellers | 2 |
| 2.2 Mainland Africa travellers | 2 |
| 3. Purpose of visit | 3 |
| 4. Leading source countries of overseas and mainland Africa travellers | 3 |
| 5. Historical trends in travel | 3 |
| 6. South African residents | 3 |

EXPLANATORY NOTES

| | |
|-----------------------------------|---|
| 1. Sources of data | 4 |
| 2. Glossary of terms | 4 |
| 3. Symbols and abbreviations used | 4 |

| | |
|-----------------|-----|
| GRAPHICS | 5-8 |
|-----------------|-----|

TABLES

1. TRAVELLERS

| | |
|---|----|
| 1.1 Arrivals and departures of foreign travellers | |
| 1.1.1 Purpose of visit | 9 |
| 1.1.2 Mode of travel | 9 |
| 1.2 Foreign travellers | |
| 1.2.1 Arrivals by country of residence and mode of travel | 10 |
| 1.2.2 Arrivals by country of residence and purpose of visit | 13 |

| | |
|----------------------------|----|
| GENERAL INFORMATION | 16 |
|----------------------------|----|

Note: The information on the total number of arrivals and departures of South African citizens and permanent residents is collected from the scanning of passports. However, data on country of final destination and purpose of visit will be available when the Department of Home Affairs re-introduces the completion of departure forms by South African citizens and permanent residents at the three international airports (Johannesburg, Cape Town and Durban).

The release provides information on travellers. Due to unavailability of data from suppliers, information on documented immigrants is not included in this release. The June 2006 documented immigration information will be provided as soon as it is made available to Stats SA.

It is important to note that travellers include (a) same day visitors and tourists of which some might be in transit; and (b) other travellers such as migrant workers from other countries paid in South Africa, diplomats and so forth.

KEY FINDINGS

1. Foreign travellers

The total number of foreign travellers who visited South Africa from mainland Africa, overseas and unspecified countries, arriving through all ports of entry during June 2006 was 601 248. The June 2006 figure represents an increase of 16,1% when compared with the June 2005 figure of 517 830 (see Table 1.1.1). The number of foreign travellers who departed from South Africa in June 2006 was 528 973, which increased by 13,6% from 465 602 recorded in June 2005.

During June 2006, the most common mode of travel used by foreign travellers arriving in South Africa was road, involving 449 616 (74,8%) of total travellers, followed by air, involving 138 095 (23,0%) travellers (see Table 1.1.2). Of the total number of foreign travellers arriving by air, 117 893 (85,4%) arrived through Johannesburg International Airport while 18 768 (13,6%) arrived through Cape Town International Airport, 524 (0,4%) arrived through Durban International Airport and the rest, 910 (0,6%), arrived through other airports (see Table 1.1.2). Those arriving by rail, sea and unspecified modes of travel were 13 537 (2,2%).

Among the total number of foreign travellers departing from South Africa, road was the most common mode of travel (398 809 representing 75,4%), followed by air (129 644 representing 24,5%). Of the total number of foreign travellers departing by air, 110 314 (85,1%) departed from Johannesburg International Airport, 18 349 (14,2%) departed from Cape Town International Airport, 269 (0,3%) used Durban International Airport and the rest, 712 (0,5%), departed through other airports (see Table 1.1.2). Those departing by rail, sea and unspecified modes of travel were 250 (0,1%). Figures 1a and 1b show the breakdown of air arrivals and departures, respectively, according to the airport used. It is observed that the distribution of air arrivals by port of entry and air departures by port of exit are almost the same.

2. Ports of entry and modes of travel used by overseas and mainland Africa travellers

2.1 Overseas travellers

Table 1.2.1 shows that during June 2006, 119 086 overseas travellers visited South Africa. This represents a 7,3% increase in the volume of overseas travellers as compared to June 2005 when there were 111 023 overseas travellers.

It is further observed that in June 2006, there were 105 954 air arrivals from overseas, which accounts for 89,0% of all overseas arrivals. Of these overseas air arrivals, 87 621 (82,7%) arrived through Johannesburg International Airport; 17 413 (16,4%) arrived through Cape Town International Airport; 406 (0,4%) arrived through Durban International Airport and the rest, 514 (0,5%), arrived through other airports.

The number of overseas travellers arriving by road during June 2006 was 12 574 (10,5%). The number of those arriving by rail, sea and unspecified mode of travel was 558 (0,5%). (An excel spreadsheet on the mode of travel for all countries of origin is available on request.)

2.2 Mainland Africa travellers

Table 1.2.1 further shows that the total number of travellers who arrived in South Africa from mainland Africa during June 2006 was 479 195, as compared to the June 2005 figure of 403 097, representing an increase of 18,9%. Of these travellers from mainland Africa, the number arriving by road was 436 225 (91,0%).

In June 2006, there were 31 223 (6,5%) air travellers arriving from mainland Africa. Of these air arrivals, 29 470 (94,4%) arrived through Johannesburg International Airport, 1 296 (4,2%) arrived through Cape Town International Airport, 114 (0,4%) arrived through Durban International Airport while the rest, 343 (1,1%), arrived through other airports. The number of travellers from mainland Africa arriving by rail, sea and unspecified mode of travel was 11 747, which constituted 2,5% of all travellers from Mainland Africa.

3. Purpose of visit

Overseas travellers: Of the 119 086 overseas travellers visiting South Africa during June 2006, 105 396 (88,5%) stated that they were in South Africa for holidays while 6 695 (5,6%) stated that they were on business trips (see Table 1.2.2). Overseas travellers arriving for the purpose of work were 4 924 (4,1%), those on transit were 961 (0,8%), those visiting for the purpose of study were 819 (0,7%) and those with border traffic concession were 260 (0,2%). (An excel spreadsheet on the purpose of visit for all countries of origin is available on request.)

Mainland Africa travellers: Of the 479 195 travellers from mainland Africa visiting South Africa during June 2006, the majority 448 400 (93,6%) stated that they were in South Africa for holidays while 9 324 (1,9%) stated that they were on business trips. A further breakdown of travellers from mainland Africa is as follows: those visiting for the purpose of study were 4 901 (1,0%), those arriving for the purpose of work were 2 358 (0,5%), those with border traffic concession were 11 656 (2,4%) and travellers on transit were 2 191 (0,5%), as shown in Table 1.2.2.

4. Leading source countries of overseas and mainland Africa travellers

Overseas travellers: Figure 2a indicates that during June 2006, the number of travellers from the USA visiting South Africa was 26 814 (22,5%), making it the leading country of origin of overseas travellers. This was followed by travellers from the UK, 20 970 (17,6%) and Germany, 8 134 (6,8%). Other main countries of origin of overseas travellers were: Australia, 6 900 (5,8%); France, 4 840 (4,1%); the Netherlands, 4 206 (3,5%); India, 3 644 (3,1%) and China, 3 182 (2,7%). Upon comparing the figures of June 2006 with those of June 2005 (see Figure 2b), the highest increase in the number of arrivals from these leading source countries was for China, (16,9% increase from 2 723 in 2005 to 3 182 in 2006). The highest percentage of the decrease in the number of travellers was observed for travellers from France (5,4% decrease from 5 114 in 2005 to 4 840 in 2006).

Travellers from mainland Africa: During June 2006, the top eight countries (Figure 3a) in mainland Africa from which travellers arriving in South Africa came were: Lesotho, 147 130 (30,7%); Zimbabwe, 80 504 (16,8%); Swaziland, 78 371 (16,4%); Mozambique, 69 939 (14,6%); Botswana, 54 205 (11,3%); Namibia, 12 265 (2,6%); Zambia, 12 254 (2,6%) and Malawi, 10 108 (2,1%). When comparing arrival figures from the leading source countries from mainland Africa, (see Figure 3b) for June 2005 and June 2006, the highest increase in the number of travellers was from Zimbabwe, (40,7% increase from 57 226 in 2005 to 80 504 in 2006).

5. Historical trends in travel

It should be borne in mind that there is often a substantial month-to-month variation in travelling figures, and one needs to look at a longer period of several months to be able to detect any trends and patterns. The trend regarding the number of overseas travellers arriving in South Africa since 2002 is shown in Figure 4. Although the figure shows evidence of seasonal fluctuations, the level of overseas travel over the period has shown an upward trend since 2002.

6. South African residents

During June 2006, the most common mode of travel used by South African residents arriving in South Africa was road, involving 196 188 (59,9%) travellers, followed by air, 129 628 (39,6%) and those arriving by rail, sea and unspecified modes of travel, 1 669 (0,5%). The most common mode of travel for South African residents departing was road, involving 229 522 (56,9%) travellers, followed by air, 173 276 (43,0%) and those departing by rail, sea and unspecified modes of travel, 490 (0,1%) as shown in Table 1.1.2.

PJ Lehohla
Statistician-General

EXPLANATORY NOTES

1. Sources of data

Legal movements across South African borders as well as legal immigration into South Africa fall under the jurisdiction of the Department of Home Affairs (DHA). Information on tourism and documented immigration is obtained from all ports of entry. Information on arrivals into and departures from South Africa is captured by DHA and loaded onto the mainframe at State Information Technology Agency (SITA). Stats SA accesses this data remotely, which is then used as part of the input data for this report. Information on legal immigrants to South Africa is sent to Stats SA on computer printout from DHA. The information on the printout is coded and captured by data capturing staff at Stats SA.

2. Glossary of terms

Key terms used in this release are defined as follows:

Tourism comprises the activities of persons travelling to and staying in places outside their usual environment for not more than one consecutive year for leisure, business and other purposes not related to the exercise of an activity remunerated from within the place visited. The usual environment of a person consists of a certain area around his/her place of residence plus all other places s/he frequently visits.

A tourist (overnight visitor) is a visitor who stays at least one night in collective or private accommodation in the place visited. An international tourist is an international visitor who stays at least one night in collective or private accommodation in the country visited.

Traveller is any person on a trip between two or more localities. An **international traveller** refers to any person on a trip between two or more countries.

South African resident refers to either a South African citizen or a non-South African citizen with a South African permanent residential permit.

Foreign traveller refers to a traveller who is not a South African resident.

Mainland Africa refers to all the countries in Africa excluding the islands.

Overseas refers to all countries except countries from mainland Africa and from 'unspecified' countries.

3. Symbols and abbreviations used

- = nil

.. = not applicable

Fig 1a: Air arrivals by port of entry, South Africa, June 2006

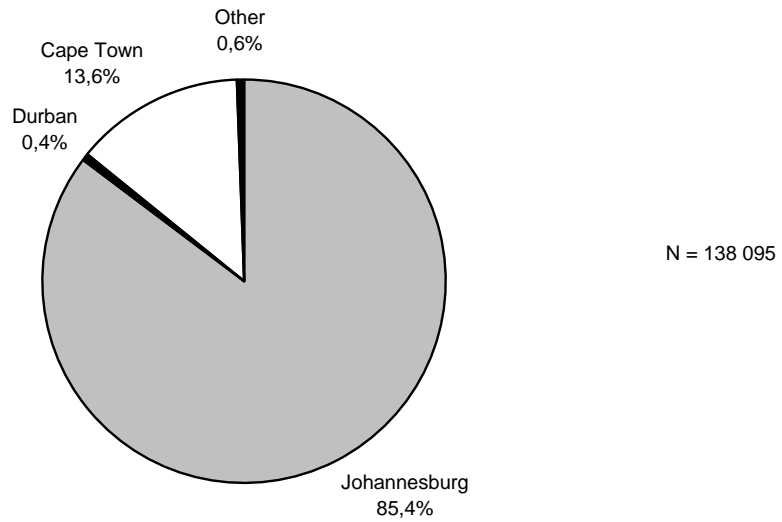


Fig 1b: Air departures by port of exit, South Africa, June 2006

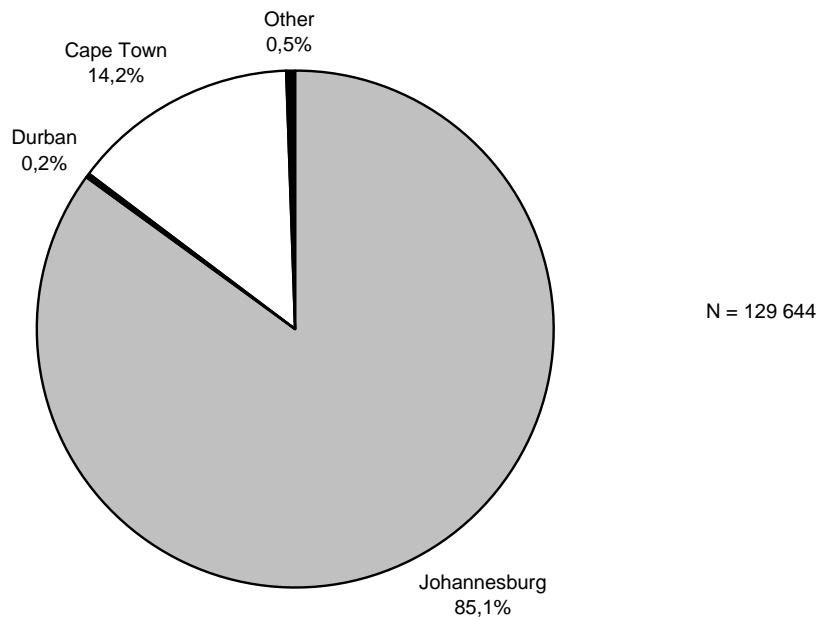


Fig. 2a: The number of overseas travellers arriving from leading source countries in June 2005 and June 2006

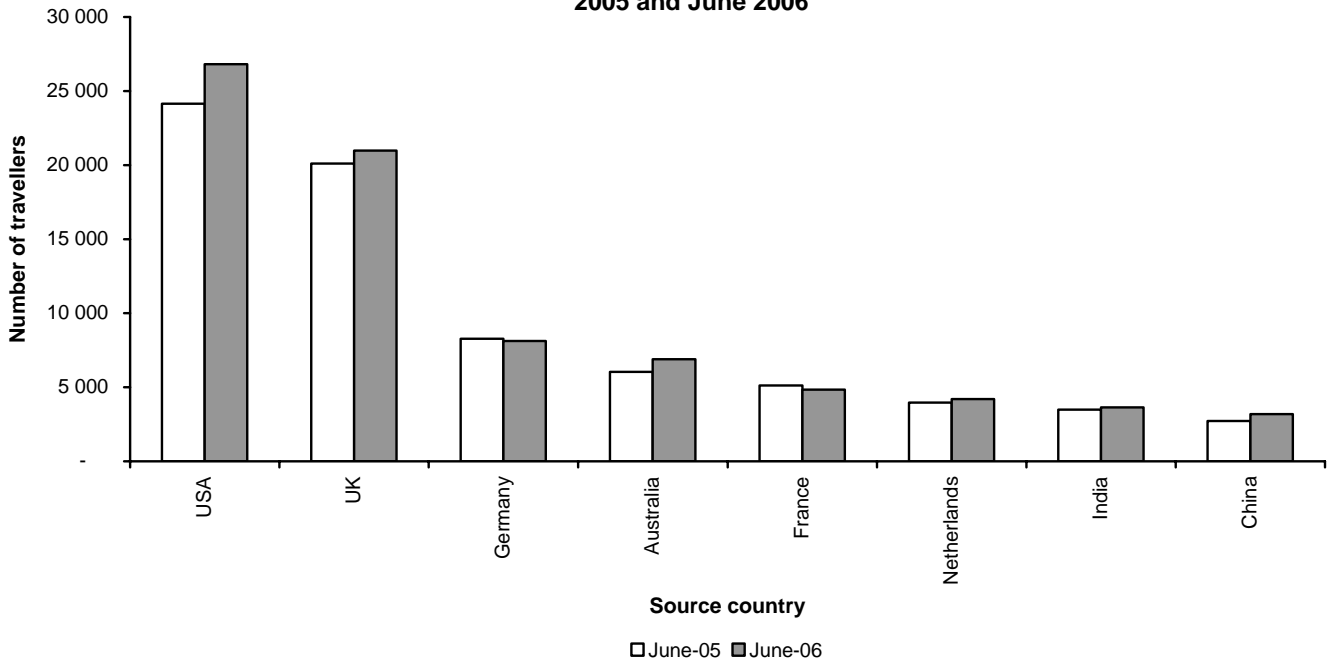


Fig. 2b: Percentage change in number of overseas travellers arriving from leading source countries in June 2006 compared with June 2005

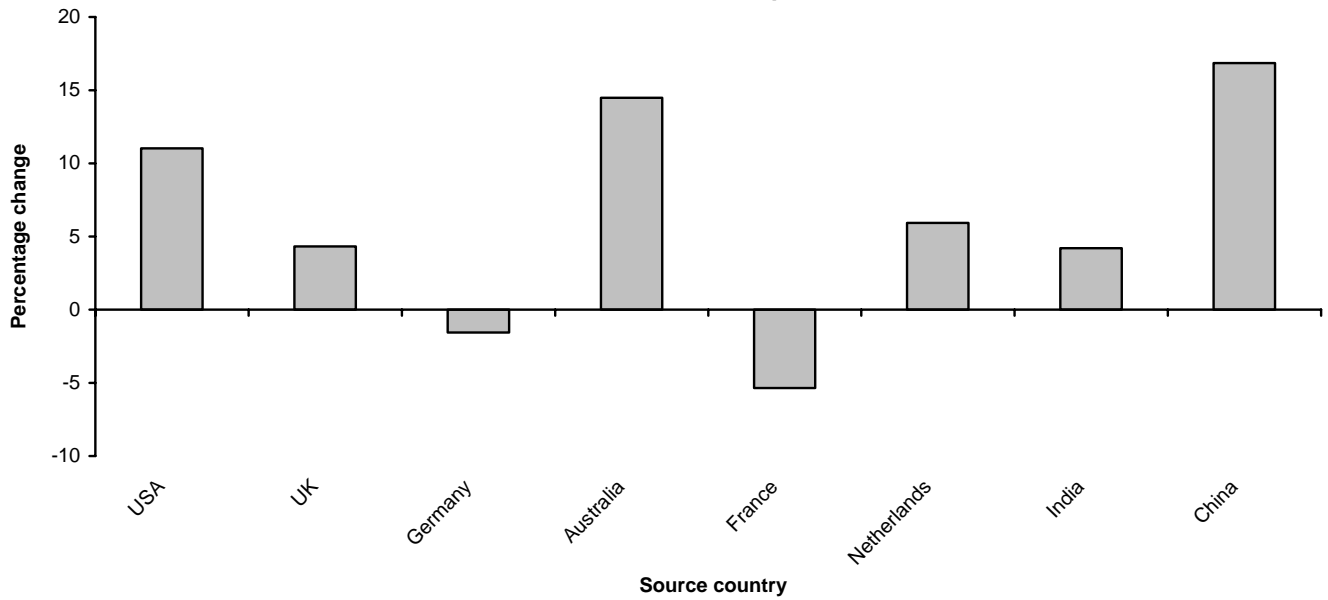


Fig. 3a: The number of travellers from mainland African countries arriving from leading source countries in June 2005 and June 2006

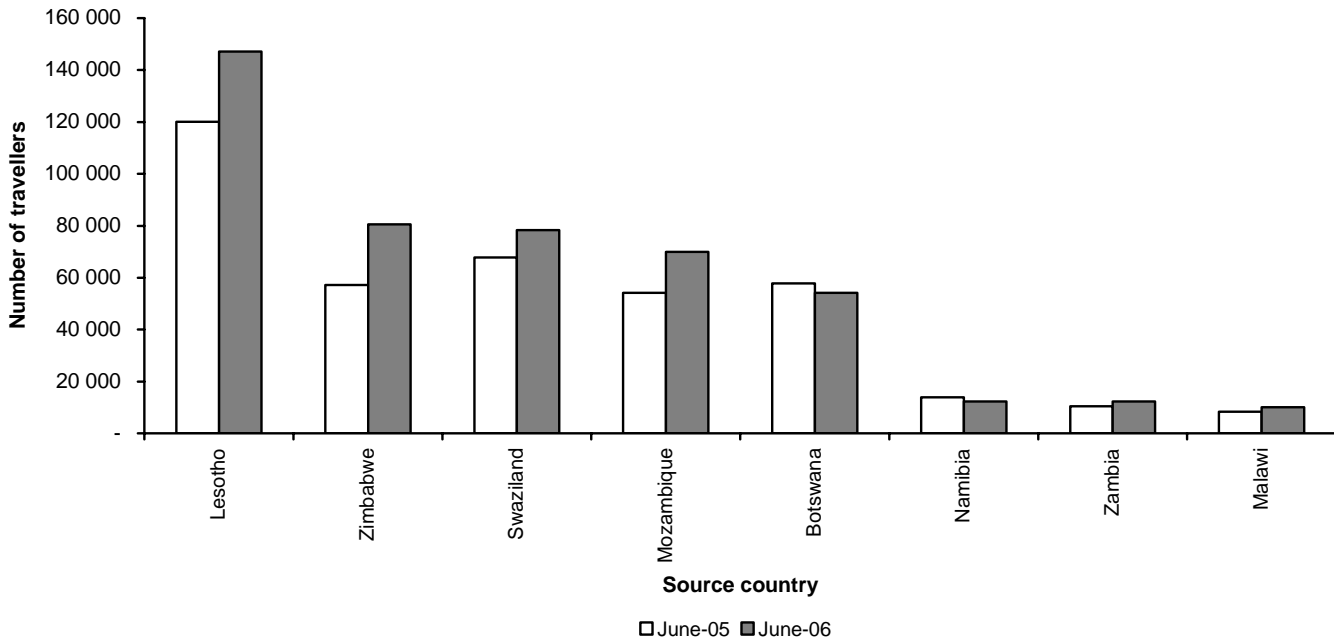
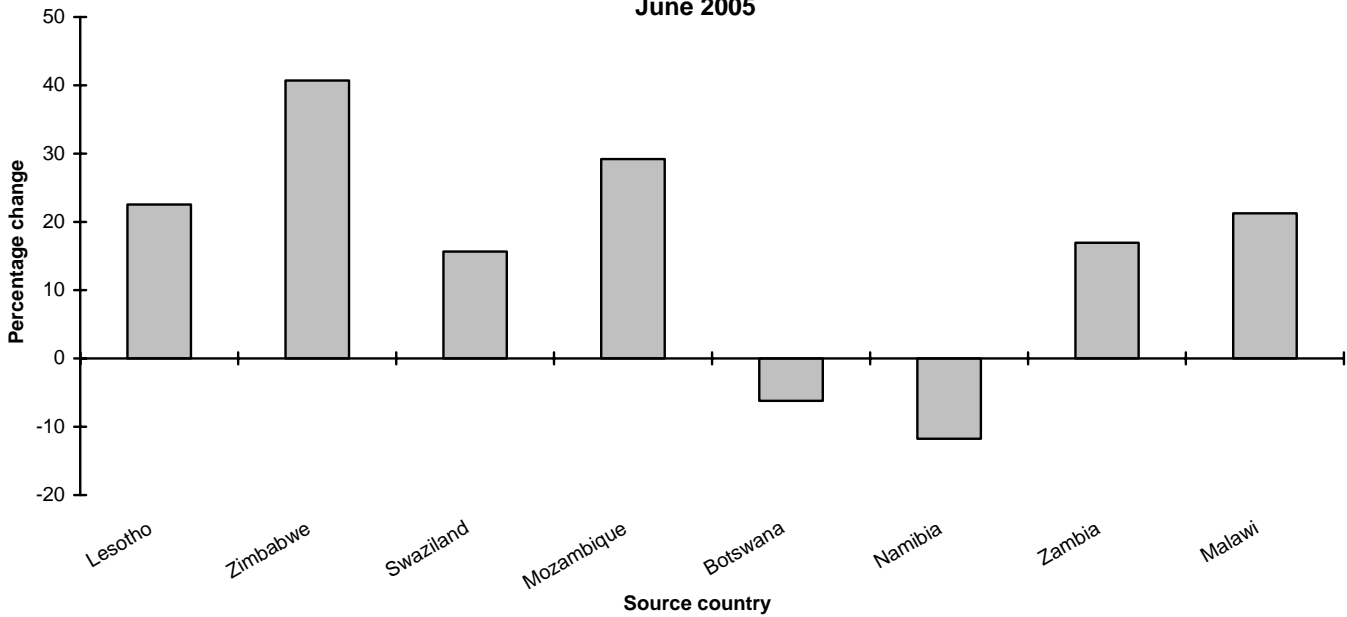
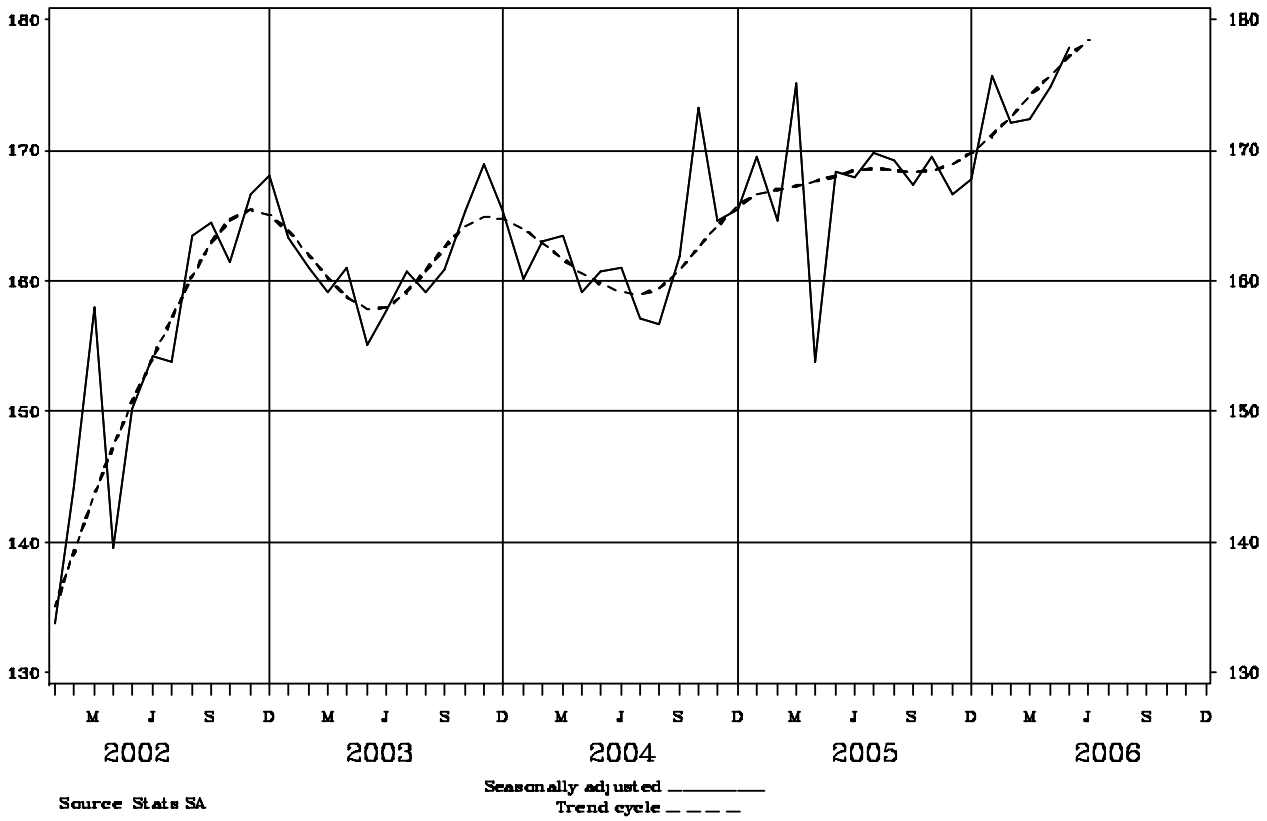


Fig. 3b: Percentage change in the number of travellers from mainland African countries arriving from leading source countries in June 2006 compared with June 2005



**Fig 4: Overseas Travellers – Arrivals
Thousands**



1. TRAVELLERS

1.1 Arrivals and departures of foreign travellers and South African residents

1.1.1 Purpose of visit

| Purpose of visit | June | | Jan – Jun. Cum. Total | | Year |
|----------------------------|---------|---------|-----------------------|-----------|-----------|
| | 2005 | 2006 | 2005 | 2006 | 2005 |
| (a) ARRIVALS: | | | | | |
| 1.Foreign travellers | | | | | |
| .Actual data | 517 830 | 601 248 | 3 207 023 | 4 022 597 | 7 518 320 |
| .Seasonally adjusted data | 626 608 | 729 696 | .. | .. | .. |
| .Business | 15 706 | 16 064 | 110 867 | 98 363 | 201 522 |
| .Holiday | 467 128 | 554 849 | 2 841 334 | 3 686 671 | 6 811 647 |
| .Study | 5 849 | 5 794 | 70 978 | 69 179 | 133 041 |
| .Work | 7 671 | 7 845 | 39 784 | 51 787 | 94 679 |
| .Contract workers | 3 369 | - | 27 950 | 8 027 | 54 899 |
| .Border traffic concession | 13 717 | 13 144 | 82 968 | 79 504 | 164 087 |
| .Transit | 4 160 | 3 156 | 30 345 | 27 497 | 55 886 |
| .Unspecified | 230 | 396 | 2 797 | 1569 | 2 559 |
| 2.South African residents | .. | 327 485 | .. | 2 067 657 | .. |
| (b) DEPARTURES: | | | | | |
| 1.Foreign travellers | 465 602 | 528 973 | 2 913 406 | 3 550 418 | 6 728 742 |
| 2.South Africans residents | .. | 403 288 | .. | 2 012 192 | .. |

1. TRAVELLERS

1.1 Arrivals and departures of foreign travellers and South African residents

1.1.2 Mode of travel

| Arrivals and departures | Total | Mode of travel (June 2006) | | | | | | | | |
|---------------------------|---------|----------------------------|----------|----------|---------|---------|------|---------|-----|---------|
| | | AIR | | | | | RAIL | ROAD | SEA | UNSPEC. |
| | | (C/Town) | (Durban) | (J/burg) | (Other) | Total | | | | |
| (a) ARRIVALS: | | | | | | | | | | |
| 1.Foreign travellers | 601 248 | 18 768 | 524 | 117 893 | 910 | 138 095 | 224 | 449 616 | 116 | 13 197 |
| 2.South African residents | 327 485 | 16 515 | 842 | 110 084 | 2 187 | 129 628 | 28 | 196 188 | 94 | 1 547 |
| (b) DEPARTURES: | | | | | | | | | | |
| 1.Foreign travellers | 528 973 | 18 349 | 269 | 110 314 | 712 | 129 644 | 387 | 398 809 | 63 | 70 |
| 2.South African residents | 403 288 | 25 493 | 985 | 144 532 | 2 266 | 173 276 | 8 | 229 522 | 480 | 2 |

1. TRAVELLERS
1.2 Foreign travellers
1.2.1 Arrivals by country of residence and mode of travel

| Country | Foreign travellers | | | | | | | | | | | | |
|------------------------------------|----------------------------|---------|----------|----------|----------|---------|---------|------|---------|-----|---------|---------------------|-----------|
| | Mode of travel (June 2006) | | | | | | | | | | | | |
| | June | | AIR | | | | | RAIL | ROAD | SEA | UNSPEC. | Jan-Jun. Cum. Total | |
| | 2005 | 2006 | (C/Town) | (Durban) | (J/burg) | (Other) | Total | | | | | 2006 | 2005 |
| GRAND TOTAL | 517 830 | 601 248 | 18 768 | 524 | 117 893 | 910 | 138 095 | 224 | 449 616 | 116 | 13 197 | 4 022 597 | 3 485 931 |
| OVERSEAS TOTAL | 111 023 | 119 086 | 17 413 | 406 | 87 621 | 514 | 105 954 | 206 | 12 574 | 55 | 297 | 986 096 | 939 540 |
| EUROPE | 54 995 | 57 411 | 11 535 | 74 | 38 520 | 202 | 50 331 | 81 | 6 900 | 47 | 52 | 640 306 | 622 995 |
| Austria | 633 | 634 | 130 | - | 431 | 4 | 565 | - | 67 | - | 2 | 9 993 | 9 909 |
| Belgium | 1 359 | 1 543 | 250 | 1 | 1 089 | 12 | 1 352 | 1 | 190 | - | - | 16 435 | 16 687 |
| Denmark | 1 105 | 1 112 | 163 | 1 | 774 | 1 | 939 | 2 | 166 | 3 | 2 | 12 275 | 11 016 |
| France | 5 114 | 4 840 | 413 | 11 | 4 002 | 12 | 4 438 | - | 401 | - | 1 | 48 601 | 49 066 |
| Germany | 8 264 | 8 134 | 2 511 | 7 | 4 360 | 36 | 6 914 | 1 | 1 217 | - | 2 | 120 789 | 118 486 |
| Greece | 504 | 466 | 26 | - | 349 | 2 | 377 | 7 | 79 | 2 | 1 | 3 763 | 3 971 |
| Ireland | 1 831 | 1 903 | 500 | 3 | 1 204 | 10 | 1 717 | 1 | 185 | - | - | 17 185 | 16 827 |
| Italy | 2 888 | 3 079 | 757 | - | 2 056 | 14 | 2 827 | 1 | 251 | - | - | 20 481 | 20 546 |
| Netherlands | 3 971 | 4 206 | 1 076 | 3 | 2 401 | 4 | 3 484 | 5 | 715 | - | 2 | 46 718 | 44 938 |
| Portugal | 1 946 | 1 859 | 50 | 12 | 898 | - | 960 | 1 | 890 | - | 8 | 12 979 | 14 679 |
| Spain | 1 571 | 2 094 | 99 | 4 | 1 911 | - | 2 014 | 2 | 78 | - | - | 12 639 | 12 512 |
| Sweden | 1 276 | 1 342 | 267 | 1 | 840 | 9 | 1 117 | - | 223 | - | 2 | 19 902 | 18 094 |
| Switzerland | 1 149 | 1 262 | 113 | - | 945 | 4 | 1 062 | - | 196 | - | 4 | 19 289 | 17 368 |
| UK | 20 100 | 20 970 | 4 335 | 28 | 14 624 | 69 | 19 056 | 3 | 1 874 | 14 | 23 | 238 860 | 235 757 |
| Other | 3 284 | 3 967 | 845 | 3 | 2 636 | 25 | 3 509 | 57 | 368 | 28 | 5 | 40 397 | 33 139 |
| NORTH AMERICA | 26 468 | 29 902 | 3 006 | 42 | 24 022 | 203 | 27 273 | 3 | 2 588 | - | 38 | 145 461 | 132 493 |
| Canada | 2 316 | 3 083 | 400 | 6 | 2 298 | 14 | 2 718 | 1 | 356 | - | 8 | 23 607 | 19 967 |
| USA | 24 152 | 26 814 | 2 606 | 36 | 21 720 | 189 | 24 551 | 2 | 2 231 | - | 30 | 121 827 | 112 526 |
| Other | - | 5 | - | - | 4 | - | 4 | - | 1 | - | - | 27 | - |
| CENTRAL & SOUTH AMERICA | 3 549 | 3 797 | 393 | 19 | 3 008 | 52 | 3 472 | 3 | 321 | 1 | - | 26 198 | 23 488 |
| Argentina | 408 | 493 | 154 | 3 | 304 | 1 | 462 | - | 31 | - | - | 5 148 | 4 895 |
| Brazil | 1 910 | 2 163 | 130 | 14 | 1 828 | 7 | 1 979 | - | 184 | - | - | 13 544 | 10 744 |
| Chile | 130 | 152 | 23 | - | 123 | - | 146 | - | 6 | - | - | 1 517 | 1 397 |
| Other | 1 101 | 989 | 86 | 2 | 753 | 44 | 885 | 3 | 100 | 1 | - | 5 989 | 6 452 |

1. TRAVELLERS

1.2 Foreign travellers

1.2.1 Arrivals by country of residence and mode of travel (continued)

| Country | Foreign travellers | | | | | | | | | | | | |
|--------------------------|----------------------------|--------|----------|----------|----------|---------|--------|------|-------|-----|---------|---------------------|--------|
| | Mode of travel (June 2006) | | | | | | | | | | | Jan-Jun. Cum. Total | |
| | June | | AIR | | | | | RAIL | ROAD | SEA | UNSPEC. | 2006 | 2005 |
| | 2005 | 2006 | (C/Town) | (Durban) | (J/burg) | (Other) | Total | | | | | | |
| AUSTRALASIA | 7 333 | 8 492 | 471 | 33 | 7 303 | 22 | 7 829 | 2 | 659 | - | 2 | 48 741 | 43 577 |
| Australia | 6 027 | 6 900 | 325 | 33 | 6 043 | 20 | 6 421 | - | 477 | - | 2 | 39 982 | 35 331 |
| New Zealand | 1 262 | 1 524 | 138 | - | 1 222 | 2 | 1 362 | - | 162 | - | - | 8 397 | 7 828 |
| Other | 44 | 68 | 8 | - | 38 | - | 46 | 2 | 20 | - | - | 362 | 418 |
| MIDDLE EAST | 2 180 | 2 597 | 163 | 1 | 2 274 | 10 | 2 448 | 3 | 142 | 2 | 2 | 17 625 | 16 030 |
| Israel | 885 | 932 | 23 | - | 851 | 7 | 881 | - | 51 | - | - | 7 224 | 7 585 |
| Saudi Arabia | 358 | 509 | 38 | - | 462 | - | 500 | - | 9 | - | - | 1 515 | 2 300 |
| Turkey | 296 | 310 | 54 | - | 227 | - | 281 | 2 | 24 | 2 | 1 | 3 262 | 2 078 |
| Other | 641 | 846 | 48 | 1 | 734 | 3 | 786 | 1 | 58 | - | 1 | 5 624 | 4 067 |
| ASIA | 15 335 | 15 794 | 1 759 | 128 | 11 675 | 25 | 13 587 | 114 | 1 888 | 5 | 200 | 99 444 | 92 317 |
| China | 2 723 | 3 182 | 382 | 18 | 2 341 | 4 | 2 745 | 3 | 386 | - | 48 | 19 908 | 19 177 |
| Hong Kong | 606 | 540 | 14 | 1 | 505 | - | 520 | - | 20 | - | - | 3 812 | 3 746 |
| India | 3 497 | 3 644 | 102 | 2 | 2 875 | 16 | 2 995 | 22 | 572 | 4 | 51 | 23 422 | 20 613 |
| Japan | 2 110 | 2 500 | 126 | 37 | 2 275 | 1 | 2 439 | 3 | 58 | - | - | 13 628 | 11 622 |
| Malaysia | 831 | 654 | 283 | - | 351 | 1 | 635 | - | 18 | - | 1 | 4 346 | 4 696 |
| Philippines | 421 | 517 | 19 | 37 | 326 | - | 382 | 59 | 44 | 1 | 31 | 3 420 | 3 212 |
| Rep of China (Taiwan) | 1 033 | 1 077 | 222 | 11 | 555 | 1 | 789 | 17 | 234 | - | 37 | 6 654 | 6 747 |
| Rep of Korea | 1 167 | 1 124 | 96 | 18 | 881 | 1 | 996 | 2 | 121 | - | 5 | 8 215 | 7 395 |
| Singapore | 520 | 561 | 184 | 2 | 348 | - | 534 | - | 27 | - | - | 2 923 | 2 812 |
| Other | 2 427 | 1 995 | 331 | 2 | 1 218 | 1 | 1 552 | 8 | 408 | - | 27 | 13 116 | 12 297 |

1. TRAVELLERS

1.2 Foreign travellers

1.2.1 Arrivals by country of residence and mode of travel (concluded)

| Country | Foreign travellers | | | | | | | | | | | | |
|-----------------------------|----------------------------|---------|----------|----------|----------|---------|--------|------|---------|-----|---------|---------------------|-----------|
| | Mode of travel (June 2006) | | | | | | | | | | | | |
| | June | | AIR | | | | | RAIL | ROAD | SEA | UNSPEC. | Jan-Jun. Cum. Total | |
| | 2005 | 2006 | (C/Town) | (Durban) | (J/burg) | (Other) | Total | | | | | 2006 | 2005 |
| INDIAN OCEAN ISLANDS | | | | | | | | | | | | | |
| | 1 163 | 1 093 | 86 | 109 | 819 | - | 1 014 | - | 76 | - | 3 | 8 321 | 8 640 |
| Mauritius | 983 | 936 | 85 | 99 | 675 | - | 859 | - | 74 | - | 3 | 6 858 | 7 005 |
| Other | 180 | 157 | 1 | 10 | 144 | - | 155 | - | 2 | - | - | 1 463 | 1 635 |
| MAINLAND AFRICA | | | | | | | | | | | | | |
| | 403 097 | 479 195 | 1 296 | 114 | 29 470 | 343 | 31 223 | 18 | 436 225 | 61 | 11 668 | 3 018 818 | 2 509 306 |
| Angola | 1 948 | 1 856 | 72 | 1 | 1 645 | 35 | 1 753 | 3 | 98 | - | 2 | 14 775 | 14 513 |
| Botswana | 57 776 | 54 205 | 48 | 5 | 2 168 | 69 | 2 290 | - | 51 848 | 5 | 62 | 347 963 | 383 460 |
| Kenya | 1 544 | 1 651 | 5 | 4 | 1 407 | 8 | 1 424 | - | 217 | 1 | 9 | 11 494 | 10 481 |
| Lesotho | 120 065 | 147 130 | 3 | - | 618 | - | 621 | - | 135 363 | - | 11 146 | 957 796 | 790 339 |
| Malawi | 8 336 | 10 108 | 6 | 3 | 1 388 | - | 1 397 | - | 8 699 | - | 12 | 57 962 | 50 362 |
| Mozambique | 54 131 | 69 939 | 1 | 79 | 1 703 | 12 | 1 795 | 1 | 68 116 | - | 27 | 437 045 | 250 191 |
| Namibia | 13 901 | 12 265 | 1 052 | - | 2 161 | 18 | 3 231 | 1 | 8 977 | 54 | 2 | 107 235 | 107 793 |
| Nigeria | 2 189 | 2 704 | 12 | - | 2 429 | 6 | 2 447 | 1 | 245 | - | 11 | 15 878 | 14 200 |
| Swaziland | 67 766 | 78 371 | 1 | 12 | 727 | - | 740 | 6 | 77 546 | - | 79 | 468 583 | 424 590 |
| Zambia | 10 477 | 12 254 | 9 | 4 | 4 205 | 25 | 4 243 | - | 7 998 | - | 13 | 75 548 | 61 177 |
| Zimbabwe | 57 226 | 80 504 | 30 | 2 | 4 862 | 36 | 4 930 | - | 75 333 | 1 | 240 | 472 191 | 355 694 |
| Other | 7 738 | 8 208 | 57 | 4 | 6 157 | 134 | 6 352 | 6 | 1 785 | - | 65 | 52 348 | 46 506 |
| UNSPECIFIED | 3 710 | 2 967 | 59 | 4 | 802 | 53 | 918 | - | 817 | - | 1 232 | 17 683 | 37 085 |

1. TRAVELLERS
1.2 Foreign travellers
1.2.2 Arrivals by country of residence and purpose of visit

| Country | Foreign travellers | | | | | | | | | | | |
|------------------------------------|--------------------|---------|------------------------------|---------|-------|-------|---------|---------|---------|---|-----------------|---------------------------|
| | June | | Purpose of visit (June 2006) | | | | | | | | Contract worker | Border traffic concession |
| | 2005 | 2006 | Visitors/tourists* | | | | | | Total | | | |
| | | | Business | Holiday | Study | Work | Transit | Unspec. | | | | |
| GRAND TOTAL | 517 830 | 601 248 | 16 064 | 554 849 | 5 794 | 7 845 | 3 156 | 396 | 588 104 | - | 13 144 | |
| OVERSEAS TOTAL | 111 023 | 119 086 | 6 695 | 105 396 | 819 | 4 924 | 961 | 31 | 118 826 | - | 260 | |
| EUROPE | 54 995 | 57 411 | 3 576 | 50 811 | 335 | 2 326 | 322 | 1 | 57 371 | - | 40 | |
| Austria | 633 | 634 | 45 | 564 | 2 | 20 | 1 | - | 632 | - | 2 | |
| Belgium | 1 359 | 1 543 | 110 | 1 338 | 8 | 82 | 5 | - | 1 543 | - | - | |
| Denmark | 1 105 | 1 112 | 65 | 1 000 | 4 | 32 | 9 | - | 1 110 | - | 2 | |
| France | 5 114 | 4 840 | 327 | 4 280 | 22 | 186 | 25 | - | 4 840 | - | - | |
| Germany | 8 264 | 8 134 | 522 | 7 145 | 72 | 379 | 15 | - | 8 133 | - | 1 | |
| Greece | 504 | 466 | 12 | 420 | 2 | 18 | 14 | - | 466 | - | - | |
| Ireland | 1 831 | 1 903 | 96 | 1 750 | 7 | 48 | 2 | - | 1 903 | - | - | |
| Italy | 2 888 | 3 079 | 120 | 2 902 | 4 | 37 | 16 | - | 3 079 | - | - | |
| Netherlands | 3 971 | 4 206 | 259 | 3 746 | 54 | 139 | 7 | - | 4 205 | - | 1 | |
| Portugal | 1 946 | 1 859 | 28 | 1 772 | 7 | 31 | 13 | - | 1 851 | - | 8 | |
| Spain | 1 571 | 2 094 | 54 | 1 969 | 6 | 41 | 24 | - | 2 094 | - | - | |
| Sweden | 1 276 | 1 342 | 90 | 1 154 | 22 | 69 | 5 | - | 1 340 | - | 2 | |
| Switzerland | 1 149 | 1 262 | 64 | 1 158 | 9 | 26 | 1 | - | 1 258 | - | 4 | |
| UK | 20 100 | 20 970 | 1 406 | 18 837 | 80 | 551 | 76 | - | 20 950 | - | 20 | |
| Other | 3 284 | 3 967 | 378 | 2 776 | 36 | 667 | 109 | 1 | 3 967 | - | - | |
| NORTH AMERICA | 26 468 | 29 902 | 798 | 28 238 | 218 | 485 | 126 | - | 29 865 | - | 37 | |
| Canada | 2 316 | 3 083 | 131 | 2 823 | 21 | 87 | 13 | - | 3 075 | - | 8 | |
| USA | 24 152 | 26 814 | 667 | 25 410 | 197 | 398 | 113 | - | 26 785 | - | 29 | |
| Other | - | 5 | - | 5 | - | - | - | - | 5 | - | - | |
| CENTRAL & SOUTH AMERICA | 3 549 | 3 797 | 182 | 3 380 | 37 | 141 | 57 | - | 3 797 | - | - | |
| Argentina | 408 | 493 | 20 | 442 | 3 | 20 | 8 | - | 493 | - | - | |
| Brazil | 1 910 | 2 163 | 95 | 1 965 | 18 | 53 | 32 | - | 2 163 | - | - | |
| Chile | 130 | 152 | 9 | 137 | 1 | 5 | - | - | 152 | - | - | |
| Other | 1 101 | 989 | 58 | 836 | 15 | 63 | 17 | - | 989 | - | - | |

*Purpose of visit in this case is not linked to duration of stay therefore these individuals can be either visitors or tourists.

1. TRAVELLERS

1.2 Foreign travellers

1.2.2 Arrivals by country of residence and purpose of visit (continued)

| Country | Foreign travellers | | | | | | | | | | |
|-----------------------|--------------------|--------|------------------------------|---------|-------|-------|---------|---------|--------|-----------------|---------------------------|
| | June | | Purpose of visit (June 2006) | | | | | | | Contract worker | Border traffic concession |
| | | | Visitors/tourists* | | | | | | | | |
| | 2005 | 2006 | Business | Holiday | Study | Work | Transit | Unspec. | Total | | |
| AUSTRALASIA | 7 333 | 8 492 | 243 | 8 086 | 15 | 125 | 21 | - | 8 490 | - | 2 |
| Australia | 6 027 | 6 900 | 198 | 6 604 | 12 | 71 | 13 | - | 6 898 | - | 2 |
| New Zealand | 1 262 | 1 524 | 41 | 1 435 | 2 | 40 | 6 | - | 1 524 | - | - |
| Other | 44 | 68 | 4 | 47 | 1 | 14 | 2 | - | 68 | - | - |
| MIDDLE EAST | 2 180 | 2 597 | 177 | 2 268 | 29 | 112 | 9 | - | 2 595 | - | 2 |
| Israel | 885 | 932 | 51 | 825 | 2 | 50 | 4 | - | 932 | - | - |
| Saudi Arabia | 358 | 509 | 14 | 481 | 7 | 7 | - | - | 509 | - | - |
| Turkey | 296 | 310 | 28 | 248 | 5 | 27 | 1 | - | 309 | - | 1 |
| Other | 641 | 846 | 84 | 714 | 15 | 28 | 4 | - | 845 | - | 1 |
| ASIA | 15 335 | 15 794 | 1 668 | 11 624 | 163 | 1 721 | 412 | 30 | 15 618 | - | 176 |
| China | 2 723 | 3 182 | 592 | 1 848 | 62 | 556 | 76 | - | 3 134 | - | 48 |
| Hong Kong | 606 | 540 | 32 | 505 | - | 2 | 1 | - | 540 | - | - |
| India | 3 497 | 3 644 | 321 | 2 807 | 23 | 376 | 60 | 7 | 3 594 | - | 50 |
| Japan | 2 110 | 2 500 | 150 | 2 194 | 4 | 107 | 45 | - | 2 500 | - | - |
| Malaysia | 831 | 654 | 42 | 565 | 2 | 40 | 5 | - | 654 | - | - |
| Philippines | 421 | 517 | 10 | 178 | 2 | 173 | 138 | - | 501 | - | 16 |
| Rep of China (Taiwan) | 1 033 | 1 077 | 186 | 620 | 18 | 184 | 36 | 3 | 1 047 | - | 30 |
| Rep of Korea | 1 167 | 1 124 | 66 | 954 | 37 | 51 | 11 | - | 1 119 | - | 5 |
| Singapore | 520 | 561 | 52 | 489 | - | 19 | 1 | - | 561 | - | - |
| Other | 2 427 | 1 995 | 217 | 1 464 | 15 | 213 | 39 | 20 | 1 968 | - | 27 |

*Purpose of visit in this case is not linked to duration of stay therefore these individuals can be either visitors or tourists.

1. TRAVELLERS

1.2 Foreign travellers

1.2.2 Arrivals by country of residence and purpose of visit (concluded)

| Country | Foreign travellers | | | | | | | | | | | |
|-----------------------------|--------------------|---------|------------------------------|---------|-------|-------|---------|---------|---------|---|-----------------|---------------------------|
| | June | | Purpose of visit (June 2006) | | | | | | | | Contract worker | Border traffic concession |
| | | | Visitors/tourists* | | | | | | | | | |
| | 2005 | 2006 | Business | Holiday | Study | Work | Transit | Unspec. | Total | | | |
| INDIAN OCEAN ISLANDS | | | | | | | | | | | | |
| | 1 163 | 1 093 | 51 | 989 | 22 | 14 | 14 | - | 1 090 | - | 3 | |
| Mauritius | 983 | 936 | 46 | 844 | 18 | 11 | 14 | - | 933 | - | 3 | |
| Other | 180 | 157 | 5 | 145 | 4 | 3 | - | - | 157 | - | - | |
| MAINLAND AFRICA | | | | | | | | | | | | |
| | 403 097 | 479 195 | 9 324 | 448 400 | 4 901 | 2 358 | 2 191 | 365 | 467 539 | - | 11 656 | |
| Angola | 1 948 | 1 856 | 73 | 1 593 | 78 | 63 | 47 | 1 | 1 855 | - | 1 | |
| Botswana | 57 776 | 54 205 | 197 | 51 253 | 2 281 | 190 | 221 | 1 | 54 143 | - | 62 | |
| Kenya | 1 544 | 1 651 | 122 | 1 316 | 50 | 130 | 17 | 7 | 1 642 | - | 9 | |
| Lesotho | 120 065 | 147 130 | 856 | 133 555 | 523 | 277 | 773 | - | 135 984 | - | 11 146 | |
| Malawi | 8 336 | 10 108 | 565 | 9 368 | 33 | 65 | 38 | 28 | 10 097 | - | 11 | |
| Mozambique | 54 131 | 69 939 | 485 | 69 021 | 219 | 134 | 50 | 3 | 69 912 | - | 27 | |
| Namibia | 13 901 | 12 265 | 2 059 | 9 438 | 236 | 55 | 477 | - | 12 265 | - | - | |
| Nigeria | 2 189 | 2 704 | 129 | 2 318 | 101 | 128 | 15 | 2 | 2 693 | - | 11 | |
| Swaziland | 67 766 | 78 371 | 487 | 76 816 | 693 | 141 | 155 | - | 78 292 | - | 79 | |
| Zambia | 10 477 | 12 254 | 1 600 | 10 401 | 93 | 95 | 53 | 1 | 12 243 | - | 11 | |
| Zimbabwe | 57 226 | 80 504 | 1 816 | 77 119 | 401 | 691 | 172 | 66 | 80 265 | - | 239 | |
| Other | 7 738 | 8 208 | 935 | 6 202 | 193 | 389 | 173 | 256 | 8 148 | - | 60 | |
| UNSPECIFIED | | | | | | | | | | | | |
| | 3 710 | 2 967 | 45 | 1 053 | 74 | 563 | 4 | - | 1 739 | - | 1 228 | |

*Purpose of visit in this case is not linked to duration of stay therefore these individuals can be either visitors or tourists.

General information

Stats SA publishes approximately 300 different statistical releases each year. It is not economically viable to produce them in more than one of South Africa's eleven official languages. Since the releases are used extensively, not only locally but also by international economic and social-scientific communities, Stats SA releases are published in English.

Stats SA has copyright on this publication. Users may apply the information as they wish, provided that they acknowledge Stats SA as the source of the basic data wherever they process, apply, utilise, publish or distribute the data; and also that they specify that the relevant application and analysis (where applicable) result from their own processing of the data.

Advance release calendar

An advance release calendar is disseminated on www.statssa.gov.za

Stats SA products

A complete set of Stats SA publications is available at the Stats SA Library and the following libraries:

National Library of South Africa, Pretoria Division
National Library of South Africa, Cape Town Division
Natal Society Library, Pietermaritzburg
Library of Parliament, Cape Town
Bloemfontein Public Library
Johannesburg Public Library
Eastern Cape Library Services, King William's Town
Central Regional Library, Polokwane
Central Reference Library, Nelspruit
Central Reference Collection, Kimberley
Central Reference Library, Mafikeng

Stats SA also provides a subscription service.

Electronic services

A large range of data are available via on-line services, diskette and computer printouts. For more details about our electronic data, contact user information services.

You can visit us on the Internet at: www.statssa.gov.za

Enquiries

Telephone: (012) 310 8600/ 8390/ 8351/ 4892/ 8496/ 8095 (user information services)
(012) 310 8384 (technical enquiries)
(012) 310 8161 (orders)
(012) 310 4883/4885/8018 (library)

Fax: (012) 310 8500/ 8495 (user information services)
(012) 310 6937 (technical enquiries)

Email: kennethma@statssa.gov.za (technical enquiries)
info@statssa.gov.za (user information services)
distribution@statssa.gov.za (orders)

Postal address: Private Bag X44, Pretoria, 0001

Produced by Stats SA