



**Statistics
South Africa**

Preferred supplier of quality statistics



Statistical release

P0351

Tourism and Migration

July 2006

**Embargoed until:
16 November 2006
11:00**

Enquiries:

User Information Services
Tel.: (012) 310 8600 / 4892 / 8390

Forthcoming issue:

August 2006

Expected release date

30 November 2006

Statistics South Africa • Mbalom-balo ya Afrika Tshipembe • Tihlayo-tiko ta Afrika-Dzonga • Dipalopalo tsa Aforika Borwa • Ezezibalo zaseNingizimu Afrika
Dipalopalo tša Afrika Borwa • Dipalopalo tsa Afrika Borwa • Ubalo lwaseMzantsi Afrika • Telubalo eNingizimu Afrika • iNanimbalo leSewula Afrika • Statistiek Suid-Afrika

email: info@statssa.gov.za
www.statssa.gov.za

170 Andries Street • Private Bag X44, 0001 Pretoria, South Africa
Tel: +27(12) 310 8911, Fax: +27(12) 321 7381

Published by
 Statistics South Africa
 Private Bag X44
 Pretoria
 0001

© Copyright, 2006

Users may apply or process this data, provided Statistics South Africa is acknowledged as the original source of the data; that it is specified that the application and/or analysis is the result of the user's independent processing of the data; and that neither the basic data nor any re-processed version or application thereof may be sold or offered for sale in any form whatsoever without prior permission from Stats SA.

CONTENTS

KEY FINDINGS

1. Foreign travellers	2
2. Ports of entry and modes of travel used by overseas and mainland Africa travellers	2
2.1 Overseas travellers	2
2.2 Mainland Africa travellers	2
3. Purpose of visit	3
4. Leading source countries of overseas and mainland Africa travellers	3
5. Historical trends in travel	3
6. South African residents	3

EXPLANATORY NOTES

1. Sources of data	4
2. Glossary of terms	4
3. Symbols and abbreviations used	4

GRAPHICS	5-8
-----------------	-----

TABLES

1. TRAVELLERS

1.1 Arrivals and departures of foreign travellers	
1.1.1 Purpose of visit	9
1.1.2 Mode of travel	9
1.2 Foreign travellers	
1.2.1 Arrivals by country of residence and mode of travel	10
1.2.2 Arrivals by country of residence and purpose of visit	13

GENERAL INFORMATION	16
----------------------------	----

Note: The information on the total number of arrivals and departures of South African citizens and permanent residents is collected from the scanning of passports. However, data on country of final destination and purpose of visit will be available when the Department of Home Affairs re-introduces the completion of departure forms by South African citizens and permanent residents at the three international airports (Johannesburg, Cape Town and Durban).

The release provides information on travellers. Due to unavailability of data from suppliers, information on documented immigrants is not included in this release. The July 2006 documented immigration information will be provided as soon as it is made available to Stats SA.

It is important to note that travellers include (a) same day visitors and tourists and (b) other travellers such as migrant workers from other countries paid in South Africa.

KEY FINDINGS

1. Foreign travellers

The total number of foreign travellers who visited South Africa from mainland Africa, overseas and unspecified countries, arriving through all ports of entry during July 2006 was 718 649. The July 2006 figure represents an increase of 12,9% when compared with the July 2005 figure of 636 569 (see Table 1.1.1). The number of foreign travellers who departed from South Africa in July 2006 was 595 353, which increased by 11,0% from 536 313 recorded in July 2005.

During July 2006, the most common mode of travel used by foreign travellers arriving in South Africa was road, involving 522 758 (72,7%) of total travellers, followed by air, involving 180 586 (25,1%) travellers (see Table 1.1.2). Of the total number of foreign travellers arriving by air, 153 194 (84,8%) arrived through OR Tambo International Airport while 25 760 (14,3%) arrived through Cape Town International Airport, 481 (0,3%) arrived through Durban International Airport and the rest, 1 151 (0,6%), arrived through other airports (see Table 1.1.2). Those arriving by rail, sea and unspecified modes of travel were 15 305 (2,2%).

Among the total number of foreign travellers departing from South Africa, road was the most common mode of travel (449 916 representing 75,6%), followed by air (144 568 representing 24,3%). Of the total number of foreign travellers departing by air, 125 486 (86,8%) departed from OR Tambo International Airport, 17 564 (12,1%) departed from Cape Town International Airport, 423 (0,3%) used Durban International Airport and the rest, 1 095 (0,8%), departed through other airports (see Table 1.1.2). Those departing by rail, sea and unspecified modes of travel were 869 (0,1%). Figures 1a and 1b show the breakdown of air arrivals and departures, respectively, according to the airport used. It is observed that the distribution of air arrivals by port of entry and air departures by port of exit are almost the same.

2. Ports of entry and modes of travel used by overseas and mainland Africa travellers

2.1 Overseas travellers

Table 1.2.1 shows that during July 2006, 163 315 overseas travellers visited South Africa. This represents a 10,2% increase in the volume of overseas travellers as compared to July 2005 when there were 148 212 overseas travellers.

It is further observed that in July 2006, there were 141 938 air arrivals from overseas, which accounts for 86,9% of all overseas arrivals. Of these overseas air arrivals, 117 019 (82,4%) arrived through OR Tambo International Airport; 23 795 (16,8%) arrived through Cape Town International Airport; 378 (0,3%) arrived through Durban International Airport and the rest, 746 (0,5%), arrived through other airports.

The number of overseas travellers arriving by road during July 2006 was 20 725 (12,7%). The number of those arriving by rail, sea and unspecified mode of travel was 652 (0,4%). (An excel spreadsheet on the mode of travel for all countries of origin is available on request.)

2.2 Mainland Africa travellers

Table 1.2.1 further shows that the total number of travellers who arrived in South Africa from mainland Africa during July 2006 was 551 663, as compared to the July 2005 figure of 481 109, representing an increase of 14,7%. Of these travellers from mainland Africa, the number arriving by road was 500 968 (90,8%).

In July 2006, there were 37 591 (6,8%) air travellers arriving from mainland Africa. Of these air arrivals, 35 319 (94,0%) arrived through OR Tambo International Airport, 1 798 (4,8%) arrived through Cape Town International Airport, 101 (0,3%) arrived through Durban International Airport while the rest, 373 (0,9%), arrived through other airports. The number of travellers from mainland Africa arriving by rail, sea and unspecified mode of travel was 13 104, which constituted 2,4% of all travellers from Mainland Africa.

3. Purpose of visit

Overseas travellers: Of the 163 315 overseas travellers visiting South Africa during July 2006, 147 290 (90,2%) stated that they were in South Africa for holidays while 6 316 (3,9%) stated that they were on business trips (see Table 1.2.2). Overseas travellers arriving for the purpose of work were 5 379 (3,3%), those on transit were 1 160 (0,7%), those visiting for the purpose of study were 2 874 (1,8%) and those with border traffic concession were 264 (0,2%). (An excel spreadsheet on the purpose of visit for all countries of origin is available on request.)

Mainland Africa travellers: Of the 551 663 travellers from mainland Africa visiting South Africa during July 2006, the majority 505 355 (91,6%) stated that they were in South Africa for holidays while 9 846 (1,8%) stated that they were on business trips. A further breakdown of travellers from mainland Africa is as follows: those visiting for the purpose of study were 16 754 (3,0%), those arriving for the purpose of work were 2 600 (0,5%), those with border traffic concession were 13 033 (2,4%) and travellers on transit were 3 546 (0,6%), as shown in Table 1.2.2.

4. Leading source countries of overseas and mainland Africa travellers

Overseas travellers: Figure 2a indicates that during July 2006, the number of travellers from the UK visiting South Africa was 31 647 (19,4%), making it the leading country of origin of overseas travellers. This was followed by travellers from the USA, 28 880 (17,7%) and Germany, 12 954 (7,9%). Other main countries of origin of overseas travellers were: the Netherlands, 11 670 (7,1%); France, 8 596 (5,3%); Australia, 7 873 (4,8%); Italy, 4 435 (2,7%) and India, 4 181 (2,6%). Upon comparing the figures of July 2006 with those of July 2005 (see Figure 2b), the highest increase in the number of arrivals from these leading source countries was for India, (32,1% increase from 3 164 in 2005 to 4 181 in 2006).

Travellers from mainland Africa: During July 2006, the top eight countries (Figure 3a) in mainland Africa from which travellers arriving in South Africa came were: Lesotho, 167 962 (30,4%); Zimbabwe, 86 759 (15,7%); Swaziland, 85 895 (15,6%); Mozambique, 80 377 (14,6%); Botswana, 68 444 (12,4%); Namibia, 18 542 (3,4%); Zambia, 13 975 (2,5%) and Malawi, 11 700 (2,1%). When comparing arrival figures from the leading source countries from mainland Africa, (see Figure 3b) for July 2005 and July 2006, the highest increase in the number of travellers was from Zambia, (27,2% increase from 10 987 in 2005 to 13 975 in 2006).

5. Historical trends in travel

It should be borne in mind that there is often a substantial month-to-month variation in travelling figures, and one needs to look at a longer period of several months to be able to detect any trends and patterns. The trend regarding the number of overseas travellers arriving in South Africa since 2002 is shown in Figure 4. Although the figure shows evidence of seasonal fluctuations, the level of overseas travel over the period has shown an upward trend since 2002.

6. South African residents

During July 2006, the most common mode of travel used by South African residents arriving in South Africa was road, involving 263 131 (59,0%) travellers, followed by air, 181 193 (40,6%) and those arriving by rail, sea and unspecified modes of travel, 1 742 (0,4%). The most common mode of travel for South African residents departing was road, involving 230 654 (62,7%) travellers, followed by air, 136 780 (37,2%) and those departing by rail, sea and unspecified modes of travel, 554 (0,1%) as shown in Table 1.1.2.

PJ Lehohla
Statistician-General

EXPLANATORY NOTES

1. Sources of data

Legal movements across South African borders as well as legal immigration into South Africa fall under the jurisdiction of the Department of Home Affairs (DHA). Information on tourism and documented immigration is obtained from all ports of entry. Information on arrivals into and departures from South Africa is captured by DHA and loaded onto the mainframe at State Information Technology Agency (SITA). Stats SA accesses these data remotely, which is then used as part of the input data for this report. Information on legal immigrants to South Africa is sent to Stats SA on computer printout from DHA. The information on the printout is coded and captured by data capturing staff at Stats SA.

2. Glossary of terms

Key terms used in this release are defined as follows:

Tourism comprises the activities of persons travelling to and staying in places outside their usual environment for not more than one consecutive year for leisure, business and other purposes not related to the exercise of an activity remunerated from within the place visited. The usual environment of a person consists of a certain area around his/her place of residence plus all other places s/he frequently visits.

A tourist (overnight visitor) is a visitor who stays at least one night in collective or private accommodation in the place visited. An international tourist is an international visitor who stays at least one night in collective or private accommodation in the country visited.

Traveller is any person on a trip between two or more localities. An **international traveller** refers to any person on a trip between two or more countries.

South African resident refers to either a South African citizen or a non-South African citizen with a South African permanent residential permit.

Foreign traveller refers to a traveller who is not a South African resident.

Mainland Africa refers to all the countries in Africa excluding the islands.

Overseas refers to all countries except countries from mainland Africa and from 'unspecified' countries.

3. Symbols and abbreviations used

- = nil

.. = not applicable

Fig 1a: Air arrivals by port of entry, South Africa, July 2006

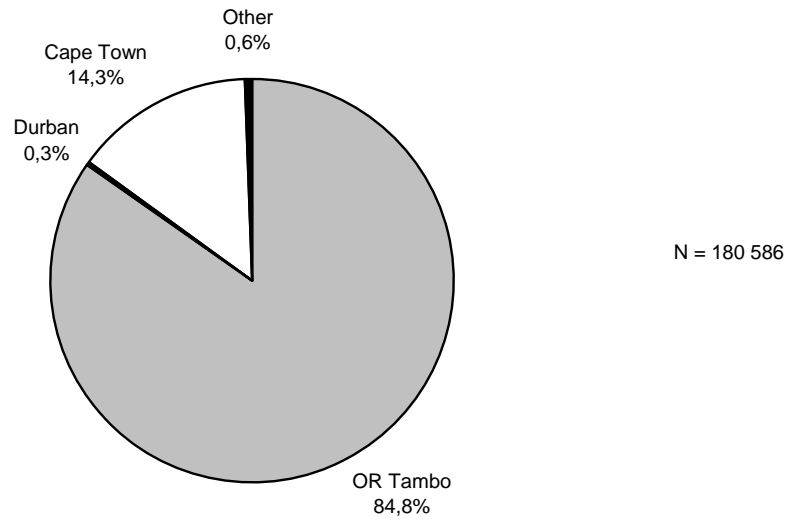


Fig 1b: Air departures by port of exit, South Africa, July 2006

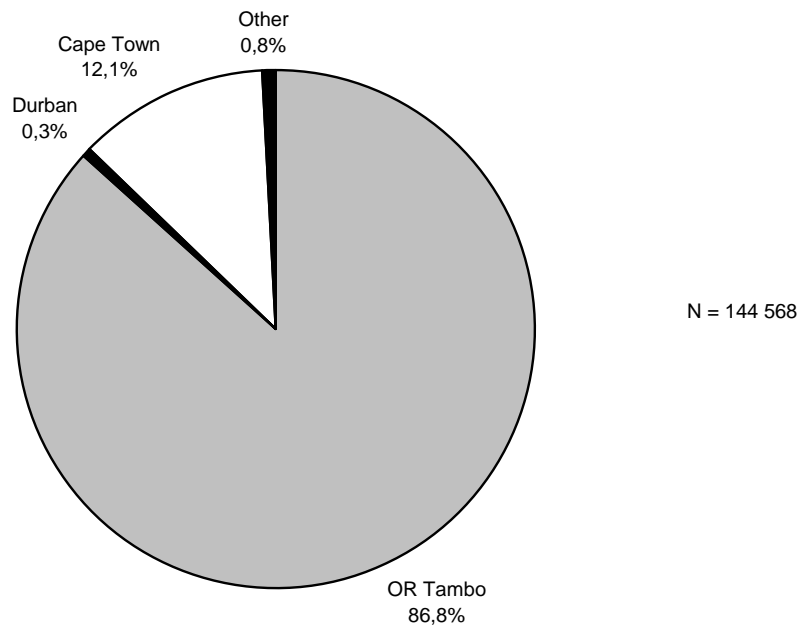


Fig. 2a: The number of overseas travellers arriving from leading source countries in July 2005 and July 2006

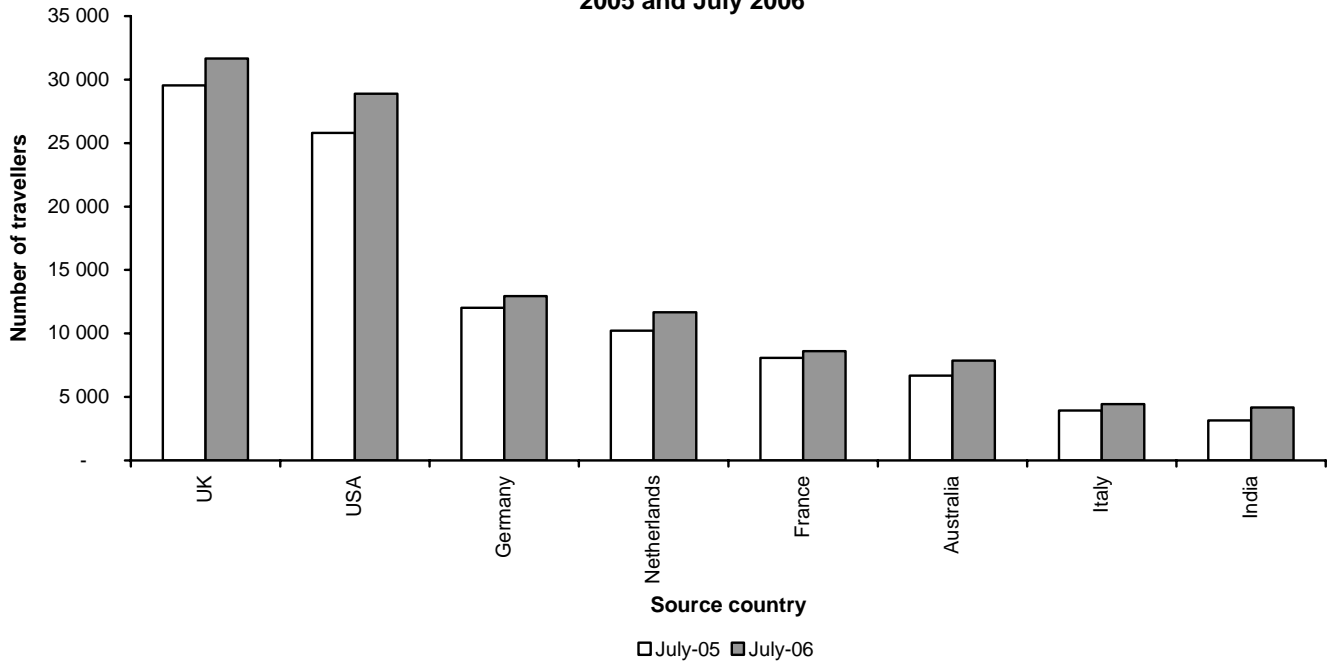


Fig. 2b: Percentage change in number of overseas travellers arriving from leading source countries in July 2006 compared with July 2005

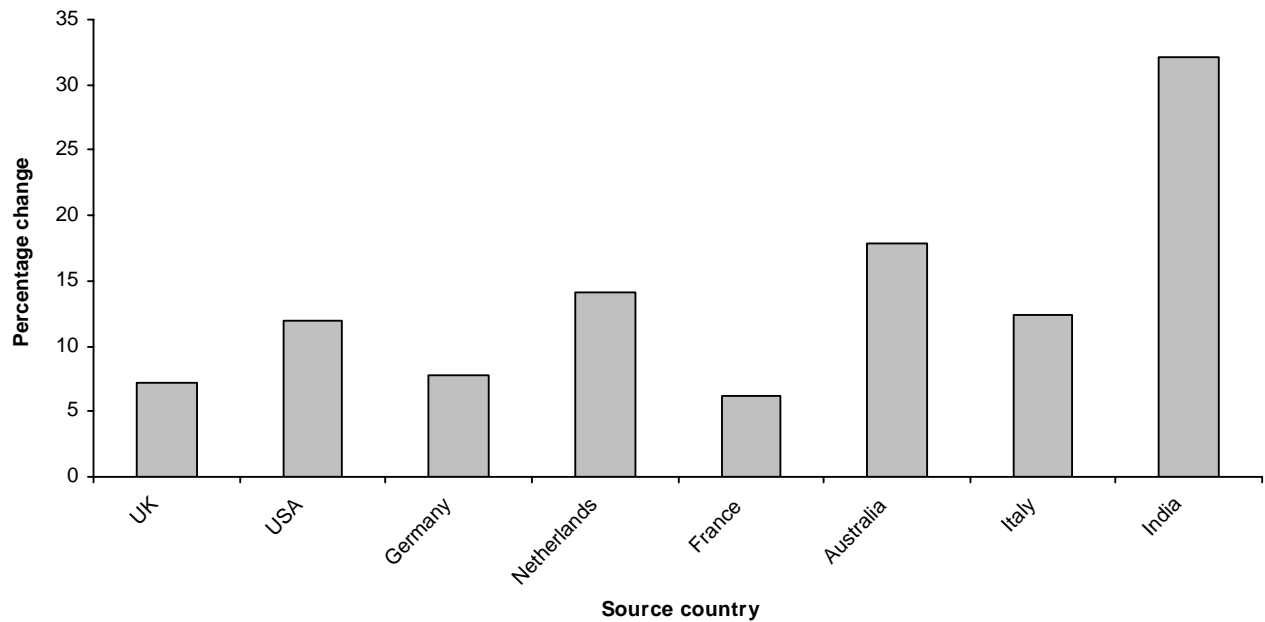


Fig. 3a: The number of travellers from mainland African countries arriving from leading source countries in July 2005 and July 2006

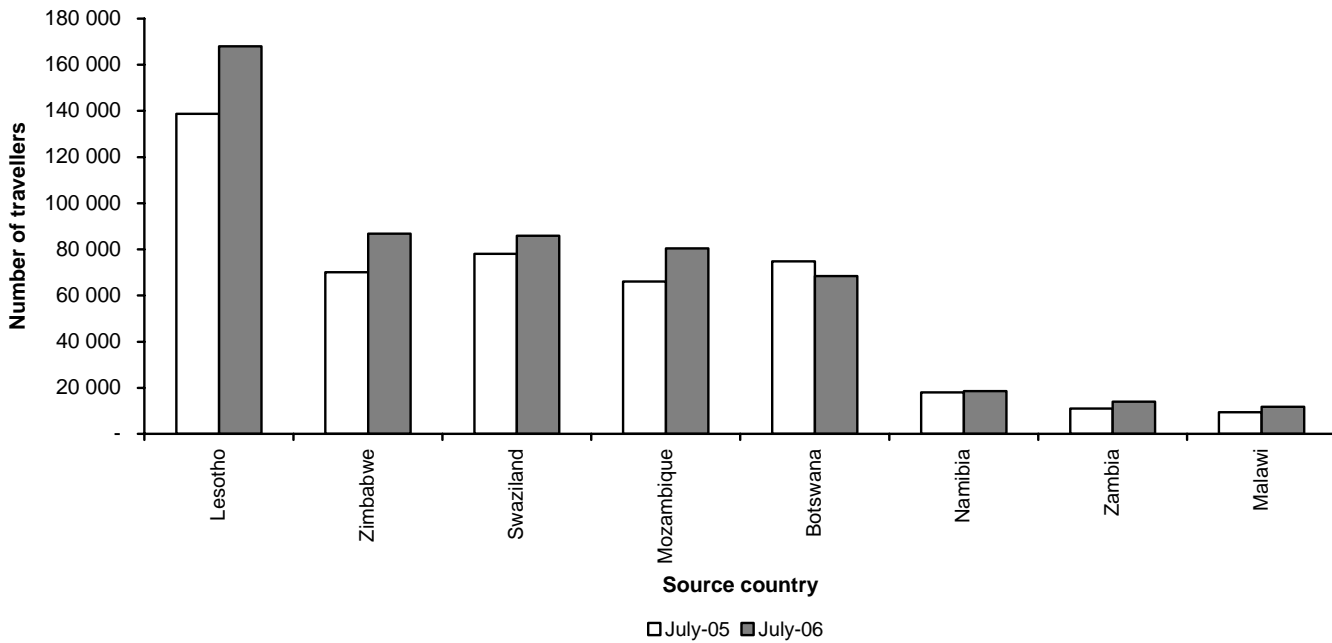


Fig. 3b: Percentage change in the number of travellers from mainland African countries arriving from leading source countries in July 2006 compared with July 2005

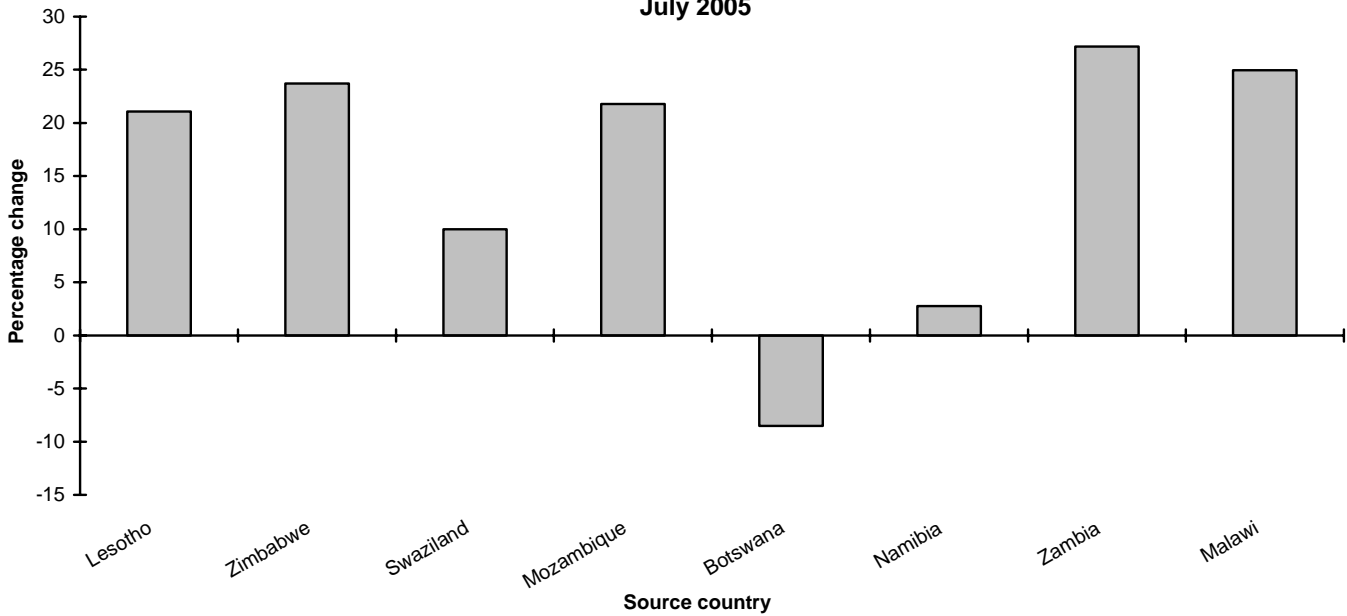
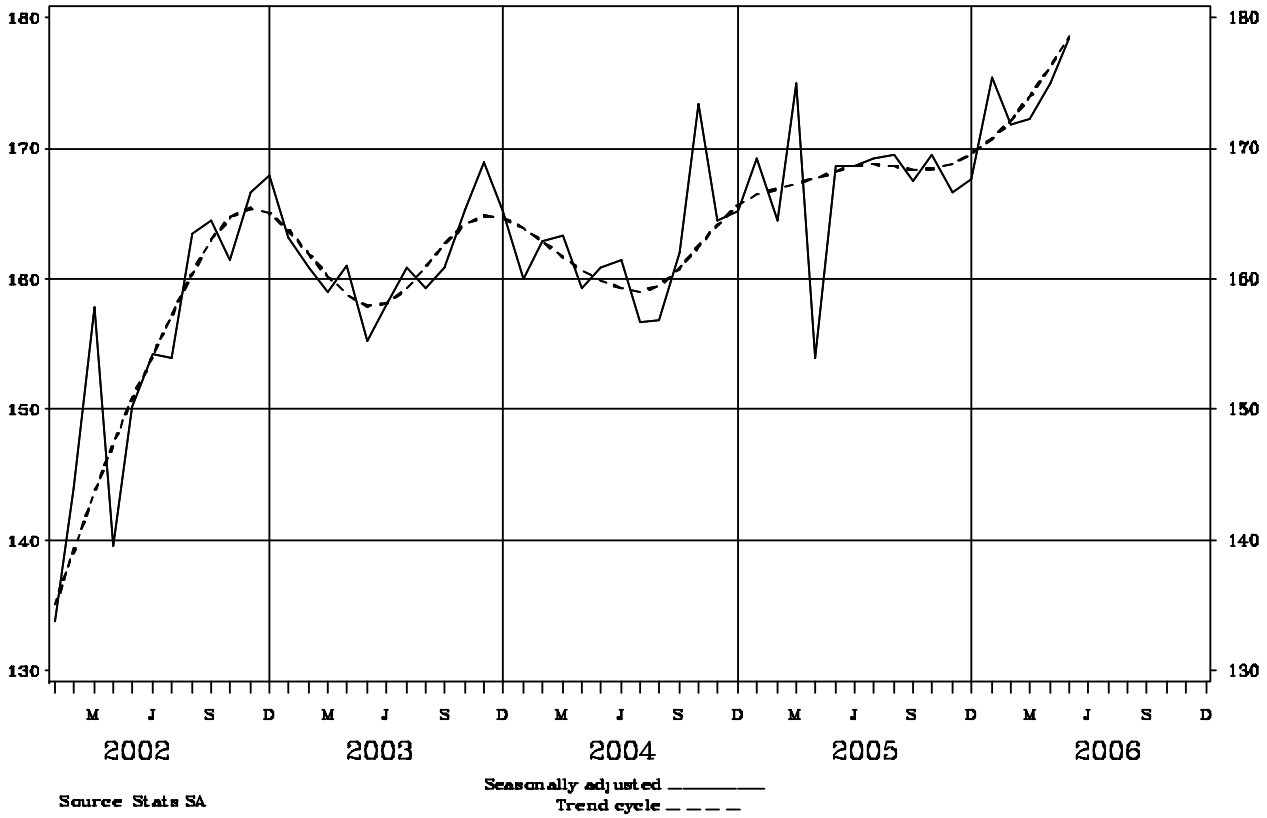


Fig 4: Overseas Travellers – Arrivals
Thousands



1. TRAVELLERS

1.1 Arrivals and departures of foreign travellers and South African residents

1.1.1 Purpose of visit

Purpose of visit	July		Jan – July. Cum. Total		Year
	2005	2006	2005	2006	2005
(a) ARRIVALS:					
1.Foreign travellers					
.Actual data	636 569	718 649	4 122 500	4 741 246	7 518 320
.Seasonally adjusted data	644 549	727 379
.Business	16 393	16 194	113 049	114 557	201 522
.Holiday	565 385	653 678	3 697 466	4 340 349	6 811 647
.Study	21 767	20 085	91 266	89 264	133 041
.Work	7 864	8 576	53 319	60 363	94 679
.Contract workers	4 460	-	32 935	8 027	54 899
.Border traffic concession	15 700	14 844	100 495	94 348	164 087
.Transit	4 692	4 710	32 442	32 207	55 886
.Unspecified	308	562	1 528	2 131	2 559
2.South African residents	-	446 066	-	2 513 723	-
(b) DEPARTURES:					
1.Foreign travellers	536 313	595 353	3 687 969	4 145 771	6 728 742
2.South Africans residents	-	367 988	-	2 380 180	-

1. TRAVELLERS

1.1 Arrivals and departures of foreign travellers and South African residents

1.1.2 Mode of travel

Arrivals and departures	Total	Mode of travel (July 2006)								
		AIR					RAIL	ROAD	SEA	UNSPEC.
		(C/Town)	(Durban)	(OR Tambo)	(Other)	Total				
(a) ARRIVALS:										
1.Foreign travellers	718 649	25 760	481	153 194	1 151	180 586	89	522 758	254	14 962
2.South African residents	446 066	25 799	1 100	151 545	2 749	181 193	-	263 131	331	1 411
(b) DEPARTURES:										
1.Foreign travellers	595 353	17 564	423	125 486	1 095	144 568	254	449 916	320	295
2.South African residents	367 988	17 680	960	115 208	2 932	136 780	-	230 654	380	174

1. TRAVELLERS
1.2 Foreign travellers
1.2.1 Arrivals by country of residence and mode of travel

Country	Foreign travellers												
	Mode of travel (July 2006)												
	July		AIR					RAIL	ROAD	SEA	UNSPEC.	Jan-July. Cum. Total	
	2005	2006	(C/Town)	(Durban)	(OR Tambo)	(Other)	Total					2006	2005
GRAND TOTAL	636 569	718 649	25 760	481	153 194	1 151	180 586	89	522 758	254	14 962	4 741 246	4 122 500
OVERSEAS TOTAL	148 212	163 315	23 795	378	117 019	746	141 938	83	20 725	188	381	1 149 411	1 087 752
EUROPE	84 848	93 214	18 051	91	61 347	240	79 729	41	13 280	81	83	733 520	707 843
Austria	1 139	1 244	269	-	791	6	1 066	-	178	-	-	11 237	11 048
Belgium	3 531	4 077	663	-	2 479	2	3 144	-	931	2	-	20 512	20 218
Denmark	1 355	1 760	195	1	1 273	1	1 470	-	288	-	2	14 035	12 371
France	8 093	8 596	595	20	6 725	13	7 353	-	1 242	-	1	57 197	57 159
Germany	12 013	12 954	3 808	7	7 070	25	10 910	2	2 010	9	23	133 743	130 499
Greece	619	575	11	-	455	1	467	2	106	-	-	4 338	4 590
Ireland	2 433	2 543	714	1	1 537	11	2 263	-	273	1	6	19 728	19 260
Italy	3 944	4 435	902	2	3 185	4	4 093	1	340	-	1	24 916	24 490
Netherlands	10 228	11 670	2 467	-	6 553	4	9 024	-	2 627	12	7	58 388	55 166
Portugal	2 211	2 348	81	12	1 179	5	1 277	1	1 065	-	5	15 327	16 890
Spain	2 418	2 877	297	1	2 395	-	2 693	8	171	5	-	15 516	14 930
Sweden	1 150	1 499	283	-	980	5	1 268	4	225	2	-	21 401	19 244
Switzerland	2 238	2 467	219	1	1 862	6	2 088	-	377	1	1	21 756	19 606
UK	29 537	31 647	6 719	39	21 913	143	28 814	2	2 795	9	27	270 507	265 294
Other	3 939	4 522	828	7	2 950	14	3 799	21	652	40	10	44 919	37 078
NORTH AMERICA	28 725	32 820	3 218	28	25 606	367	29 219	4	3 551	3	43	178 281	161 218
Canada	2 932	3 940	548	13	2 830	28	3 419	-	516	-	5	27 547	22 899
USA	25 793	28 880	2 670	15	22 776	339	25 800	4	3 035	3	38	150 707	138 319
Other	-	-	-	-	-	-	-	-	-	-	-	27	-
CENTRAL & SOUTH AMERICA	4 890	5 243	417	6	4 231	53	4 707	2	470	-	64	31 441	28 378
Argentina	1 008	761	264	2	456	-	722	-	39	-	-	5 909	5 903
Brazil	2 257	2 989	21	3	2 611	42	2 677	-	252	-	60	16 533	13 001
Chile	219	258	32	-	204	-	236	-	21	-	1	1 775	1 616
Other	1 406	1 235	100	1	960	11	1 072	2	158	-	3	7 224	7 858

1. TRAVELLERS

1.2 Foreign travellers

1.2.1 Arrivals by country of residence and mode of travel (continued)

Country	Foreign travellers												
	Mode of travel (July 2006)											Jan-July. Cum. Total	
	July		AIR					RAIL	ROAD	SEA	UNSPEC.	2006	2005
	2005	2006	(C/Town)	(Durban)	(OR Tambo)	(Other)	Total						
AUSTRALASIA	8 590	9 285	499	58	7 844	50	8 451	1	810	16	7	58 026	52 167
Australia	6 678	7 873	407	55	6 730	44	7 236	1	619	10	7	47 855	42 009
New Zealand	1 855	1 350	90	3	1 077	6	1 176	-	168	6	-	9 747	9 683
Other	57	62	2	-	37	-	39	-	23	-	-	424	475
MIDDLE EAST	3 491	3 745	193	2	3 408	12	3 615	1	126	1	2	21 370	19 521
Israel	1 348	1 179	17	-	1 106	5	1 128	-	51	-	-	8 403	8 933
Saudi Arabia	783	920	82	-	826	-	908	-	11	1	-	2 435	3 083
Turkey	344	393	29	-	353	-	382	-	11	-	-	3 655	2 422
Other	1 016	1 253	65	2	1 123	7	1 197	1	53	-	2	6 877	5 083
ASIA	16 151	17 524	1 190	26	13 657	21	14 894	33	2 343	87	167	116 968	108 468
China	3 272	3 040	208	-	2 420	1	2 629	-	365	-	46	22 948	22 449
Hong Kong	727	648	13	-	622	-	635	-	12	-	1	4 460	4 473
India	3 164	4 181	95	18	3 193	2	3 308	6	816	2	49	27 603	23 777
Japan	2 100	2 651	74	-	2 478	4	2 556	1	93	1	-	16 279	13 722
Malaysia	1 010	658	197	1	438	1	637	-	19	-	2	5 004	5 706
Philippines	417	574	20	1	426	1	448	17	52	40	17	3 994	3 629
Rep of China (Taiwan)	1 293	1 509	193	1	966	7	1 167	1	285	22	34	8 163	8 040
Rep of Korea	1 743	1 744	166	-	1 403	-	1 569	-	175	-	-	9 959	9 138
Singapore	405	403	67	-	326	-	393	-	8	2	-	3 326	3 217
Other	2 020	2 116	157	5	1 385	5	1 552	8	518	20	18	15 232	14 317

1. TRAVELLERS

1.2 Foreign travellers

1.2.1 Arrivals by country of residence and mode of travel (concluded)

Country	Foreign travellers												
	Mode of travel (July 2006)												
	July		AIR					RAIL	ROAD	SEA	UNSPEC.	Jan-July. Cum. Total	
	2005	2006	(C/Town)	(Durban)	(OR Tambo)	(Other)	Total					2006	2005
INDIAN OCEAN ISLANDS													
Mauritius	1 517	1 484	227	167	926	3	1 323	1	145	-	15	9 805	10 157
Other	1 237	1 274	226	154	741	1	1 122	1	136	-	15	8 132	8 242
	280	210	1	13	185	2	201	-	9	-	-	1 673	1 915
MAINLAND AFRICA													
Angola	481 109	551 663	1 798	101	35 319	373	37 591	6	500 968	65	13 033	3 570 481	2 990 415
Botswana	2 329	2 451	132	-	2 159	18	2 309	-	142	-	-	17 226	16 842
Kenya	74 806	68 444	178	-	2 480	59	2 717	-	65 671	-	56	416 407	458 266
Lesotho	1 974	2 149	11	2	1 842	12	1 867	1	276	-	5	13 643	12 455
Malawi	138 729	167 962	1	-	654	1	656	-	154 724	-	12 582	1 125 758	929 068
Mozambique	9 364	11 700	8	-	1 662	3	1 673	-	10 013	-	14	69 662	59 726
Namibia	66 002	80 377	14	72	1 985	17	2 088	1	78 248	-	40	517 422	316 193
Nigeria	18 044	18 542	1 284	-	2 369	33	3 686	-	14 792	61	3	125 777	125 837
Swaziland	2 258	3 179	16	-	2 852	7	2 875	-	291	-	13	19 057	16 458
Zambia	78 090	85 895	3	19	744	2	768	2	85 016	1	108	554 478	502 680
Zimbabwe	10 987	13 975	14	-	4 760	19	4 793	-	9 176	-	6	89 523	72 164
Other	70 125	86 759	40	4	6 095	47	6 186	2	80 386	3	182	558 950	425 819
	8 401	10 230	97	4	7 717	155	7 973	-	2 233	-	24	62 578	54 907
UNSPECIFIED	7 248	3 671	167	2	856	32	1 057	-	1 065	1	1 548	21 354	44 333

1. TRAVELLERS
1.2 Foreign travellers
1.2.2 Arrivals by country of residence and purpose of visit

Country	Foreign travellers											
	July		Purpose of visit (July 2006)								Contract worker	Border traffic concession
			Visitors/tourists*									
	2005	2006	Business	Holiday	Study	Work	Transit	Unspec.	Total			
GRAND TOTAL	636 569	718 649	16 194	653 678	20 085	8 576	4 710	562	703 805	-	14 844	
OVERSEAS TOTAL	148 212	163 315	6 316	147 290	2 874	5 379	1 160	32	163 051	-	264	
EUROPE	84 848	93 214	3 397	85 113	1 653	2 519	469	1	93 152	-	62	
Austria	1 139	1 244	68	1 133	18	25	-	-	1 244	-	-	
Belgium	3 531	4 077	99	3 835	29	110	4	-	4 077	-	-	
Denmark	1 355	1 760	39	1 673	14	28	4	-	1 758	-	2	
France	8 093	8 596	251	7 987	91	209	58	-	8 596	-	-	
Germany	12 013	12 954	603	11 240	556	503	38	-	12 940	-	14	
Greece	619	575	10	526	2	32	5	-	575	-	-	
Ireland	2 433	2 543	89	2 345	52	40	11	-	2 537	-	6	
Italy	3 944	4 435	124	4 222	22	49	17	-	4 434	-	1	
Netherlands	10 228	11 670	224	11 060	209	153	17	-	11 663	-	7	
Portugal	2 211	2 348	45	2 237	18	34	9	-	2 343	-	5	
Spain	2 418	2 877	53	2 734	13	51	26	-	2 877	-	-	
Sweden	1 150	1 499	90	1 283	46	68	12	-	1 499	-	-	
Switzerland	2 238	2 467	79	2 288	47	40	11	1	2 466	-	1	
UK	29 537	31 647	1 360	29 145	370	644	104	-	31 623	-	24	
Other	3 939	4 522	263	3 405	166	533	153	-	4 520	-	2	
NORTH AMERICA	28 725	32 820	859	30 621	518	639	149	-	32 786	-	34	
Canada	2 932	3 940	151	3 585	40	132	28	-	3 936	-	4	
USA	25 793	28 880	708	27 036	478	507	121	-	28 850	-	30	
Other	-	-	-	-	-	-	-	-	-	-	-	
CENTRAL & SOUTH AMERICA	4 890	5 243	170	4 747	47	128	149	-	5 241	-	2	
Argentina	1 008	761	10	718	6	18	9	-	761	-	-	
Brazil	2 257	2 989	55	2 741	20	60	113	-	2 989	-	-	
Chile	219	258	8	222	5	11	12	-	258	-	-	
Other	1 406	1 235	97	1 066	16	39	15	-	1 233	-	2	

*Purpose of visit in this case is not linked to duration of stay therefore these individuals can be either visitors or tourists.

1. TRAVELLERS

1.2 Foreign travellers

1.2.2 Arrivals by country of residence and purpose of visit (continued)

Country	Foreign travellers										
	July		Purpose of visit (July 2006)							Contract worker	Border traffic concession
			Visitors/tourists*								
	2005	2006	Business	Holiday	Study	Work	Transit	Unspec.	Total		
AUSTRALASIA	8 590	9 285	218	8 840	59	118	46	-	9 281	-	4
Australia	6 678	7 873	188	7 495	49	94	43	-	7 869	-	4
New Zealand	1 855	1 350	22	1 299	4	22	3	-	1 350	-	-
Other	57	62	8	46	6	2	-	-	62	-	-
MIDDLE EAST	3 491	3 745	160	3 388	62	110	22	1	3 743	-	2
Israel	1 348	1 179	69	1 056	15	36	3	-	1 179	-	-
Saudi Arabia	783	920	14	889	7	10	-	-	920	-	-
Turkey	344	393	26	326	10	30	1	-	393	-	-
Other	1 016	1 253	51	1 117	30	34	18	1	1 251	-	2
ASIA	16 151	17 524	1 472	13 343	375	1 841	318	30	17 379	-	145
China	3 272	3 040	382	2 031	101	423	56	1	2 994	-	46
Hong Kong	727	648	21	610	3	9	4	-	647	-	1
India	3 164	4 181	447	3 120	61	458	51	3	4 140	-	41
Japan	2 100	2 651	122	2 374	16	128	11	-	2 651	-	-
Malaysia	1 010	658	65	557	9	25	-	-	656	-	2
Philippines	417	574	25	218	3	226	99	-	571	-	3
Rep of China (Taiwan)	1 293	1 509	136	1 027	54	239	11	8	1 475	-	34
Rep of Korea	1 743	1 744	67	1 536	84	53	4	-	1 744	-	-
Singapore	405	403	45	337	1	17	3	-	403	-	-
Other	2 020	2 116	162	1 533	43	263	79	18	2 098	-	18

*Purpose of visit in this case is not linked to duration of stay therefore these individuals can be either visitors or tourists.

1. TRAVELLERS

1.2 Foreign travellers

1.2.2 Arrivals by country of residence and purpose of visit (concluded)

Country	Foreign travellers											
	July		Purpose of visit (July 2006)								Contract worker	Border traffic concession
			Visitors/tourists*									
	2005	2006	Business	Holiday	Study	Work	Transit	Unspec.	Total			
INDIAN OCEAN ISLANDS	1 517	1 484	40	1 238	160	24	7	-	1 469	-	15	
Mauritius	1 237	1 274	40	1 043	148	22	6	-	1 259	-	15	
Other	280	210	-	195	12	2	1	-	210	-	-	
MAINLAND AFRICA	481 109	551 663	9 846	505 355	16 754	2 600	3 546	529	538 630	-	13 033	
Angola	2 329	2 451	87	1 947	340	50	24	3	2 451	-	-	
Botswana	74 806	68 444	195	62 468	5 124	214	387	-	68 388	-	56	
Kenya	1 974	2 149	157	1 526	287	157	10	7	2 144	-	5	
Lesotho	138 729	167 962	900	151 546	1 440	295	1 199	-	155 380	-	12 582	
Malawi	9 364	11 700	612	10 755	180	55	36	48	11 686	-	14	
Mozambique	66 002	80 377	411	79 082	624	129	87	4	80 337	-	40	
Namibia	18 044	18 542	2 227	12 517	2 585	88	1 122	-	18 539	-	3	
Nigeria	2 258	3 179	134	2 641	239	136	7	9	3 166	-	13	
Swaziland	78 090	85 895	380	83 170	1 800	156	281	-	85 787	-	108	
Zambia	10 987	13 975	1 808	11 534	457	109	59	2	13 969	-	6	
Zimbabwe	70 125	86 759	2 017	80 532	2 999	732	174	123	86 577	-	182	
Other	8 401	10 230	918	7 637	679	479	160	333	10 206	-	24	
UNSPECIFIED	7 248	3 671	32	1 033	457	597	4	1	2 124	-	1 547	

*Purpose of visit in this case is not linked to duration of stay therefore these individuals can be either visitors or tourists.

General information

Stats SA publishes approximately 300 different statistical releases each year. It is not economically viable to produce them in more than one of South Africa's eleven official languages. Since the releases are used extensively, not only locally but also by international economic and social-scientific communities, Stats SA releases are published in English.

Stats SA has copyright on this publication. Users may apply the information as they wish, provided that they acknowledge Stats SA as the source of the basic data wherever they process, apply, utilise, publish or distribute the data; and also that they specify that the relevant application and analysis (where applicable) result from their own processing of the data.

Advance release calendar

An advance release calendar is disseminated on www.statssa.gov.za

Stats SA products

A complete set of Stats SA publications is available at the Stats SA Library and the following libraries:

National Library of South Africa, Pretoria Division
National Library of South Africa, Cape Town Division
Natal Society Library, Pietermaritzburg
Library of Parliament, Cape Town
Bloemfontein Public Library
Johannesburg Public Library
Eastern Cape Library Services, King William's Town
Central Regional Library, Polokwane
Central Reference Library, Nelspruit
Central Reference Collection, Kimberley
Central Reference Library, Mafikeng

Stats SA also provides a subscription service.

Electronic services

A large range of data are available via on-line services, diskette and computer printouts. For more details about our electronic data, contact user information services.

You can visit us on the Internet at: www.statssa.gov.za

Enquiries

Telephone: (012) 310 8600/ 8390/ 8351/ 4892/ 8496/ 8095 (user information services)
(012) 310 8384 (technical enquiries)
(012) 310 8161 (orders)
(012) 310 4883/4885/8018 (library)

Fax: (012) 310 8500/ 8495 (user information services)
(012) 310 6937 (technical enquiries)

Email: kennethma@statssa.gov.za (technical enquiries)
info@statssa.gov.za (user information services)
distribution@statssa.gov.za (orders)

Postal address: Private Bag X44, Pretoria, 0001

Produced by Stats SA