

STATISTICAL RELEASE

P0351

Tourism and migration

December 2017

Embargoed until:
21 February 2018
09:00

ENQUIRIES:

User Information Services
Tel: (012) 310 8600 / 4892 / 8390

FORTHCOMING ISSUE:

January 2018

EXPECTED RELEASE DATE:

19 March 2018

www.statssa.gov.za
info@statssa.gov.za
T +27 12 310 8911
F +27 12 310 8500

Private Bag X44, Pretoria, 0001, South Africa
ISibalo House, Koch Street, Salvokop, Pretoria, 0002



Contents

Preface	3
1. Key findings	4
1.1 Travellers	4
1.1.1 Number of travellers	4
1.1.2 Mode of travel	5
1.2 Tourists	5
1.2.1 Mode of travel	5
1.2.2 Regional and national distribution	5
1.2.3 Purpose of visit	6
1.2.4 Sex and age distribution	6
1.2.5 Quarterly and annual trends	7
1.2.6 Summary of 2017	7
2. Figures	9
Figure 1 – Number of tourists from the ten leading overseas countries in December 2016 and December 2017	9
Figure 2 – Number of tourists from the ten leading Southern African Development Community (SADC) countries in December 2016 and December 2017	9
Figure 3 – Number of tourists from the ten leading 'other' African countries in December 2016 and December 2017	10
Figure 4 – Number of tourists from overseas countries by month: 2012 – 2017	10
Figure 5 – Number of tourists from SADC countries by month: 2012 – 2017	11
Figure 6 – Number of tourists from 'other' African countries by month: 2012 – 2017	11
3. Tables	12
Table 1 – Number of South African residents and foreign travellers by travel direction	12
Table 2 – Number of South African residents and foreign travellers by travel direction and mode of travel	13
Table 3 – Number of tourists by country of residence and mode of travel (December 2017)	14
Table 4 – Number of tourists by country of residence and purpose of visit	18
Table 5 – Number of tourists from overseas, SADC and 'other' African regions by sex and age group	22
4. Annexures	23
4.1 Annexure A – Number of tourists: Quarter 3, 2017 – Quarter 4, 2017 changes by country of residence and month of travel	23
4.2 Annexure B – Number of tourists: Quarter 4, 2016 – Quarter 4, 2017 changes by country of residence and month of travel	27
4.3 Annexure C – Number of tourists: Quarter 1 – 4, 2016, Quarter 1 – 4, 2017 and changes by country of residence	31

5. Explanatory notes35

5.1 Introduction35

5.2 Purpose of the statistical release35

5.3 Scope and coverage.....35

5.4 Data35

5.5 Limitations.....36

5.6 Definition of terms.....36

5.6.1 Definitions used by the United Nations World Tourism Organisation (UNWTO)36

5.6.2 Definitions used specifically in this release36

5.7 Symbols used37

5.8 Rounding off37

6. General information37

Preface

This monthly statistical release provides information on South African residents and foreign travellers who entered or left South Africa in December 2017. Specific focus is on foreign tourists who entered the country during this month. The tourists are classified by region and country of residence. Details of their mode of travel; purpose of visit; age and sex distribution are also provided.

Risenga Maluleke
Statistician-General

1. Key findings

1.1 Travellers

1.1.1 Number of travellers

The routine data collected by the Department of Home Affairs' (DHA) immigration officers at the ports of entry into South Africa show that a total of 4 639 848 travellers (arrivals, departures and transits) passed through South African ports of entry in December 2017. As presented in Table 1 on page 12, these travellers were made up of 1 397 631 South African residents and 3 242 217 foreign travellers. A further breakdown of the figures for South African residents indicates that there were 590 949 arrivals, 805 778 departures and 904 travellers in transit. The corresponding volume for foreign arrivals, departures and transit travellers was 1 561 724, 1 621 875 and 58 618, respectively.

A comparison between the movements in December 2016 and December 2017 indicates that the volume of arrivals and departures increased for both South African residents and foreign travellers, while the volume of transits increased for South African residents but decreased for foreign travellers. For South African residents, the volume of arrivals increased by 4,3% (from 566 635 in December 2016 to 590 949 in December 2017), departures increased by 5,1% (from 766 332 in December 2016 to 805 778 in December 2017), and transits increased by 0,1% (from 903 in December 2016 to 904 in December 2017). For foreign travellers, arrivals increased by 0,5% (from 1 554 048 in December 2016 to 1 561 724 in December 2017), departures increased by 2,0% (from 1 589 855 in December 2016 to 1 621 875 in December 2017), and transits decreased by 9,5% (from 64 775 in December 2016 to 58 618 in December 2017).

A comparison between the movements in November 2017 and December 2017 indicates that the volume of arrivals and departures increased for both South African residents and foreign travellers. The volume of transits increased for South African residents but decreased for foreign travellers. For South African residents, the volume of arrivals increased by 44,3% (from 409 446 in November 2017 to 590 949 in December 2017), departures increased by 91,5% (from 420 665 in November 2017 to 805 778 in December 2017), and transits increased by 16,8% (from 774 in November 2017 to 904 in December 2017). For foreign travellers, arrivals increased by 17,5% (from 1 329 025 in November 2017 to 1 561 724 in December 2017), departures increased by 33,4% (from 1 215 768 in November 2017 to 1 621 875 in December 2017), and transits decreased by 10,9% (from 65 809 in November 2017 to 58 618 in December 2017).

Detailed information on the departure of travellers is not available in the movement control system. Data on the purpose of travel and the number of days South African residents intend to spend or spent abroad are not collected by the DHA. Hence, it is therefore not possible to categorise South African residents as tourists or non-tourists. However, some data are available on foreign arrivals for this categorisation.

As presented in Table 1 on page 12, in December 2017, 82 894 (5,3%) of foreign arrivals were classified as non-visitors while 1 478 830 (94,7%) were classified as visitors. The visitors were categorised into three groups:

- i. Arrivals only – comprising visitors who entered the country in December 2017 but did not depart in December 2017 [368 060 (24,9%)];
- ii. Single trips – visitors who came to South Africa once in December 2017 and left in December 2017 [543 146 (36,7%)]; and
- iii. Multiple trips – visitors who came to and left South Africa more than once in December 2017 [567 624 (38,4%)].

Visitors were further grouped as same-day visitors and overnight visitors (tourists). In December 2017, there were 487 251 (32,9%) same-day visitors and 991 579 (67,1%) tourists. Between December 2016 and December 2017, the volume of same-day visitors decreased by 4,0% (from 507 351 in December 2016 to 487 251 in December 2017) and that of tourists increased by 2,7% (from 965 107 in December 2016 to 991 579 in December 2017). Between November 2017 and December 2017, the volume of same-day visitors increased by 22,8% (from 396 826 in November 2017 to 487 251 in December 2017), while tourists increased by 16,8% (from 848 966 in November 2017 to 991 579 in December 2017).

1.1.2 Mode of travel

Data presented in Table 2 on page 13 show that in December 2017, road transport was the most common mode of travel used by 3 399 461 (73,3%) of the 4 639 848 travellers. The total number of travellers who used air transport was 1 203 389 (25,9%). Compared to use of air and land transport, a small number of travellers, 36 998 (0,8%) used sea transport. The arrivals data for South African residents show that 214 558 (36,3%) came by air, 363 714 (61,5%) came by road and 12 677 (2,1%) arrived by sea transport. For departures, 276 783 (34,3%) used air, 517 679 (64,2%) used road and 11 316 (1,4%) left by sea transport. All travellers in transit, 904 (100,0%) used air transport.

In the case of foreign travellers, 341 650 (21,9%) arrived by air, 1 214 338 (77,8%) came by road and 5 736 (0,4%) arrived by sea transport. When departing South Africa, 310 876 (19,2%) foreign travellers left by air, 1 303 730 (80,4%) left by road and 7 269 (0,4%) left by sea transport. All travellers in transit 58 618 (100,0%) used air transport. Table 2 on page 13 further shows that of the 487 251 same-day visitors, an overwhelming majority, 469 103 (96,3%) arrived in the country by road, 17 965 (3,7%) flew into the country, and 183 (less than 0,1%) arrived by sea transport. Data on tourists show that 682 237 (68,8%) used road transport, 308 867 (31,1%) came by air transport and 475 (less than 0,1%) arrived by sea transport.

1.2 Tourists

1.2.1 Mode of travel

The country of residence of tourists is used to categorise them according to their respective countries and regions. Information on the specific region and country of residence of the tourists and the mode of travel used to enter South Africa is provided in Table 3 on pages 14–17. In December 2017, 241 111 (92,1%) of the 261 728 overseas tourists arrived in the country by air, whilst 20 427 (7,8%) came in by road and 190 (0,1%) arrived by sea. Tourists from the Southern African Development Community (SADC) countries, on the other hand, came predominantly by road, 660 091 (92,4%), 54 019 (7,6%) arrived by air transport and 279 (less than 0,1%) arrived by sea transport. The number of tourists who came into South Africa by air from 'other' African countries was 12 946 (89,5%), with 1 509 (10,4%) using road transport and 6 (less than 0,1%) using sea transport.

1.2.2 Regional and national distribution

In December 2017, the distribution of overseas tourists was as follows: Europe, 167 732 (64,1%); North America, 41 116 (15,7%); Asia, 23 134 (8,8%); Australasia, 15 005 (5,7%); Central and South America, 11 132 (4,3%); and Middle East, 3 609 (1,4%).

Data presented in Figure 1 on page 9 and Table 3 on pages 14–15 indicate that the ten leading overseas countries in terms of the number of tourists visiting South Africa in December 2017 were United Kingdom (UK), 50 636 (19,3%); United States of America (USA), 33 984 (13,0%); Germany, 32 560 (12,4%); The Netherlands, 15 063 (5,8%); France, 14 364 (5,5%); Australia, 12 758 (4,9%); Sweden, 8 527 (3,3%); Brazil, 8 096 (3,1%); India, 8 039 (3,1%); and Canada, 7 132 (2,7%). Tourists from these ten countries constituted 73,0% of all tourists from overseas countries. A comparison of movements in the ten leading countries between December 2016 and December 2017 shows that the number of tourists increased for eight of the ten leading countries (Brazil, India, USA, Sweden, Canada, Germany, France and The Netherlands), but decreased for UK and Australia. Brazil had the largest increase of 25,1% (from 6 473 tourists in December 2016 to 8 096 in December 2017), while UK had the largest decrease of 5,3% (from 53 462 tourists in December 2016 to 50 636 in December 2017).

Virtually all tourists from Africa, 714 389 (98,0%), came from the SADC countries. The distribution of the remaining tourists from Africa is as follows: East and Central Africa, 6 632 (0,9%); West Africa, 6 612 (0,9%) and North Africa 1 217 (0,2%). The ten leading SADC countries in terms of the number of tourists visiting South Africa in December 2017 were: Zimbabwe, 209 479 (29,3%); Lesotho, 137 754 (19,3%); Mozambique, 112 326 (15,7%); Botswana, 94 194 (13,2%); Swaziland, 84 289 (11,8%); Namibia, 26 551 (3,7%); Zambia, 16 857 (2,4%); Malawi 15 032 (2,1%); Angola, 7 293 (1,0%) and DRC, 4 117 (0,6%). (See Figure 2 on page 9 and Table 3 on pages 15–16). Tourists from these ten countries constituted 99,1% of all tourists from the SADC countries. A comparison between movements in December 2016 and December 2017 for the ten leading SADC countries shows that the

number of tourists increased for eight of the ten leading countries (Angola, Mozambique, Malawi, Botswana, DRC, Swaziland, Lesotho and Zimbabwe), and decreased for two (Zambia and Namibia). Angola showed the largest increase of 54,4% (from 4 723 tourists in December 2016 to 7 293 in December 2017), while Zambia showed the largest decrease of 3,3% (from 17 424 tourists in December 2016 to 16 857 in December 2017).

The ten leading countries in terms of the number of tourists visiting South Africa in December 2017 from 'other' African countries, as shown in Figure 3 on page 10 and Table 3 on pages 14–15, were: Nigeria, 4 079 (28,2%); Kenya, 2 642 (18,3%); Ghana, 1 535 (10,6%); Uganda, 1 496 (10,3%); Gabon, 879 (6,1%); Egypt, 703 (4,9%); Ethiopia, 620 (4,3%); Cameroon, 387 (2,7%); Congo, 274 (1,9%) and Côte d'Ivoire, 163 (1,1%). Tourists from these ten countries constituted 88,4% of all tourists from 'other' African countries. A comparison between movements in December 2016 and December 2017 shows that the number of tourists increased for five of the ten leading countries (Egypt, Cameroon, Ghana, Uganda and Côte d'Ivoire) and decreased for the other five (Nigeria, Kenya, Congo, Ethiopia and Gabon). Egypt showed the largest increase of 13,4% (from 620 tourists in December 2016 to 703 in December 2017). Nigeria showed the largest decrease of 14,5% (from 4 772 tourists in December 2016 to 4 079 in December 2017), followed by Kenya, which decreased by 14,5% (from 3 091 tourists in December 2016 to 2 642 in December 2017).

1.2.3 Purpose of visit

As observed from data shown in Table 4 on pages 18–21, in December 2017, the majority of tourists, 975 522 (98,4%), were in South Africa for holiday compared to 13 109 (1,3%) and 2 948 (0,3%) who were in South Africa for business and for study purposes respectively.

A total of 14 924 (99,5%) tourists from Australasia, 11 021 (99,0%) from Central and South America, 40 532 (98,6%) from North America, 164 931 (98,3%) from Europe, 3 456 (95,8%) from Middle East and 22 068 (95,4%) from Asia were in South Africa for holiday. Compared to other overseas regions, Europe had the highest numbers of tourists, 164 931 (98,3%) who came for holiday, 2 292 (1,4%) who came for business, and 509 (0,3%) who came for study purposes.

Proportionately however, Asia had the highest proportion of its tourists who came to South Africa for business, 3,9% (901), followed by Middle East, 2,9% (106). Middle East had the highest proportion of its tourists who came for study purposes, 1,3% (47).

The majority of African tourists, 717 659 (98,5%) came to South Africa for holiday. However, the following differences in terms of reasons for travel were observed between tourists from the SADC countries and 'other' African countries, namely:

- Whereas 705 187 (98,6%) of tourists from the SADC countries were on holiday; 13 472 (93,2%) of tourists from 'other' African countries came for the same purpose. Data on the regions of 'other' African countries show that tourists on holiday constituted 93,7% (6 195); 93,2% (6 184); and 89,8% (1 093) for West Africa, East and Central Africa and North Africa respectively.
- Business persons constituted 4,1% (594) of tourists from 'other' African countries and 1,2% (8 528) from the SADC countries. North Africa had the highest proportion, 6,7% (82) of its tourists who came to South Africa for business purposes.
- Students made up the highest proportion, 2,7% (395) of tourists from 'other' African countries compared with 0,2% (1 674) from the SADC countries. North Africa had the highest proportion of its tourists, 3,5% (42) who came to South Africa for study purposes.

1.2.4 Sex and age distribution

Table 5 on page 22 shows that in December 2017, there were 521 933 (52,6%) male and 469 646 (47,4%) female tourists. Overseas tourists were made up of 135 580 (51,8%) male tourists and 126 148 (48,2%) female tourists. There were 377 380 (52,8%) male and 337 009 (47,2%) female tourists from the SADC countries. Tourists from 'other' African countries were made up of 8 393 (58,0%) male and 6 068 (42,0%) female tourists.

The ages of the tourists were categorised into three broad groups: Those younger than 15 years, those that were 15 to 64 years old, and those that were 65 years and older. The overall results presented in Table 5 on page 22 show

that 96 484 (9,7%) tourists were aged less than 15 years; 852 205 (85,9%) were aged between 15 and 64 years; and 42 890 (4,3%) were aged 65 years and older.

Taking the regions of residence into consideration, the results further show that 633 005 (88,6%) tourists from SADC and 12 233 (84,6%) from 'other' African countries were aged between 15 and 64 years, compared to 206 004 (78,7%) tourists in the same age range from overseas. The proportion of tourists aged less than 15 years was slightly lower among tourists from SADC, 8,9% (63 769) compared to those from 'other' African countries, 12,6% (1 825) and overseas, 11,8% (30 874).

A comparison of the three regions shows higher proportions of the elderly among both male and female tourists from overseas. Tourists aged 65 years and older comprised 9,4% (12 795) of male and 9,6% (12 055) of female tourists from overseas. This is in contrast to the pattern observed among tourists from the other two regions where tourists aged 65 years and older comprised less than 3,5% of both male and female tourists. From the SADC countries elderly tourists made up 2,0% (7 541) and 3,0% (10 074) of male and female tourists respectively; while in 'other' African countries elderly tourists made up 2,4% (199) and 3,4% (204) of male and female tourists respectively.

1.2.5 Quarterly and annual trends

Figures 4, 5, and 6 on pages 10 and 11 show monthly and yearly changes in number of tourists from overseas, SADC and 'other' African countries, respectively. For overseas countries (Figure 4 on page 10), the number of tourists to South Africa is generally highest in quarter one (January – March) and quarter four (October – December). Quarter two (April – June) is characterised by a large decrease in number of tourists, reaching its lowest in June, followed by a gradual increase into quarter three. According to the World Tourism Organisation (2017), the May – August period includes the peak tourism season in most of the world's major tourism destinations and source markets, which explains the significant reduction in number of tourists to South Africa during this period, as Figure 4 shows. Between quarter three and quarter four of 2017 (Annexure A, page 23) the number of tourists from overseas increased by 25,4% (from 628 751 in quarter three to 788 558 in quarter four). A year-on-year comparison between 2016 and 2017 for quarter four (Annexure B, page 27) shows that the number of overseas tourists increased by 3,7% (from 760 478 in quarter four, 2016 to 788 558 in quarter four, 2017).

For the SADC countries (Figure 5 on page 11), the months of January and December have the highest numbers of tourists, with a distinct peak in January and two smaller peaks in March/April, coinciding with the Christmas and Easter holiday breaks in the region, periods characterised by high volumes of travellers between South Africa and neighbouring SADC countries. The months of February, June and November have the lowest numbers of tourists compared to other months. Between quarter three and four in 2017 the number of tourists increased by 0,7% (from 1 871 227 in quarter three to 1 884 709 in quarter four) (Annexure A, page 24). Comparisons between 2016 and 2017 show that the number of SADC tourists increased by 4,0% (from 1 812 981 in quarter four, 2016 to 1 884 709 in quarter four, 2017) (Annexure B, page 27).

In the case of the 'other' African countries (Figure 6 on page 11), the months of January, August, and November seem to attract higher numbers of tourists compared to other months, while June attracts the lowest. Between quarter three and quarter four in 2017 (Annexure A, page 23), the number of tourists from 'other' African countries increased by 0,2% (from 43 818 in quarter three to 43 907 in quarter four). North Africa had the largest increase of 8,7% (from 3 885 in quarter three to 4 223 in quarter four of 2017), followed by West Africa which increased by 2,5% (from 20 833 in quarter three to 21 362 in quarter four) while East and Central Africa decreased by 4,1% (from 19 100 in quarter three to 18 322 in quarter four). A year-on-year comparison for quarter four (Annexure B, page 27) shows that the number of tourists from 'other' African countries decreased by 9,8% (from 48 689 in quarter four, 2016 to 43 907 in quarter four, 2017). West Africa decreased by 11,9% (from 24 249 in quarter four, 2016 to 21 362 in quarter four, 2017). Tourists from East and Central Africa decreased by 8,8% (from 20 079 in quarter four, 2016 to 18 322 in quarter four, 2017) and North Africa decreased by 3,2% from 4 361 in quarter four, 2016 to 4 223 in quarter four, 2017.

1.2.6 Summary of 2017

The 2017 annual tourism report, which provides detailed information on the performance of international tourist arrivals in South Africa is scheduled for release in April 2018. A brief synopsis of tourism performance for 2017 is provided in Annexure C, which shows that the number of tourists in 2017 increased by 2,4%, from 10 044 163 in

2016 to 10 285 197 in 2017. This growth came largely from the overseas countries, where the number of tourists increased by 7,2%, from 2 531 046 in 2016 to 2 713 133 in 2017.

From Europe, led by the UK, Germany, France and The Netherlands, the number of tourists increased by 7,6%, from 1 544 026 in 2016 to 1 660 848 in 2017. From the USA, the second leading overseas tourist source country for South Africa, tourists increased by 7,5%, from 345 013 in 2016 to 370 747 in 2017. Growth in tourists from Central and South America was particularly high at 59,3% in 2017. This growth was largely driven by Brazil, which contributed the highest number of tourists from the region. Brazil experienced a high growth rate of 74,7%, from 38 814 in 2016 to 67 797 in 2017.

Countries in Asia experienced negative growth of 3,3%, with tourists from China dropping by 17,0% from 116 946 in 2016 to 97 069 in 2017.

From the countries in Africa growth in tourists was low at 0,8%. Number of tourists from the SADC countries increased by 1,0%, from 7 313 684 in 2016 to 7 386 959 in 2017. The 'other' African countries experienced negative growth of 8,2%, with the highest decline recorded for Nigeria where the number of tourists fell by 22,4%, from 65 599 in 2016 to 50 921 in 2017.

2. Figures

Figure 1 – Number of tourists from the ten leading overseas countries in December 2016 and December 2017

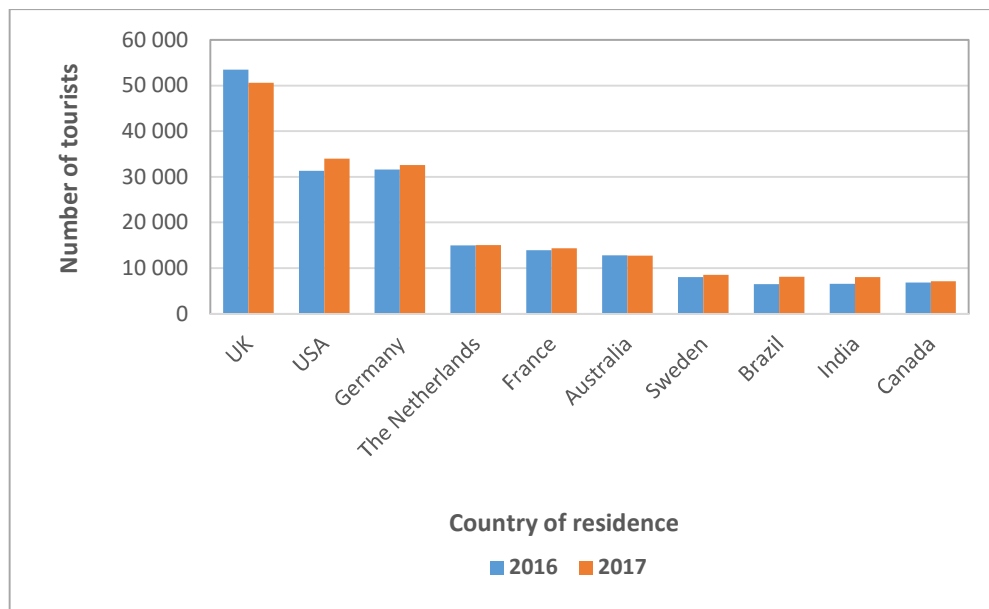


Figure 2 – Number of tourists from the ten leading Southern African Development Community (SADC) countries in December 2016 and December 2017

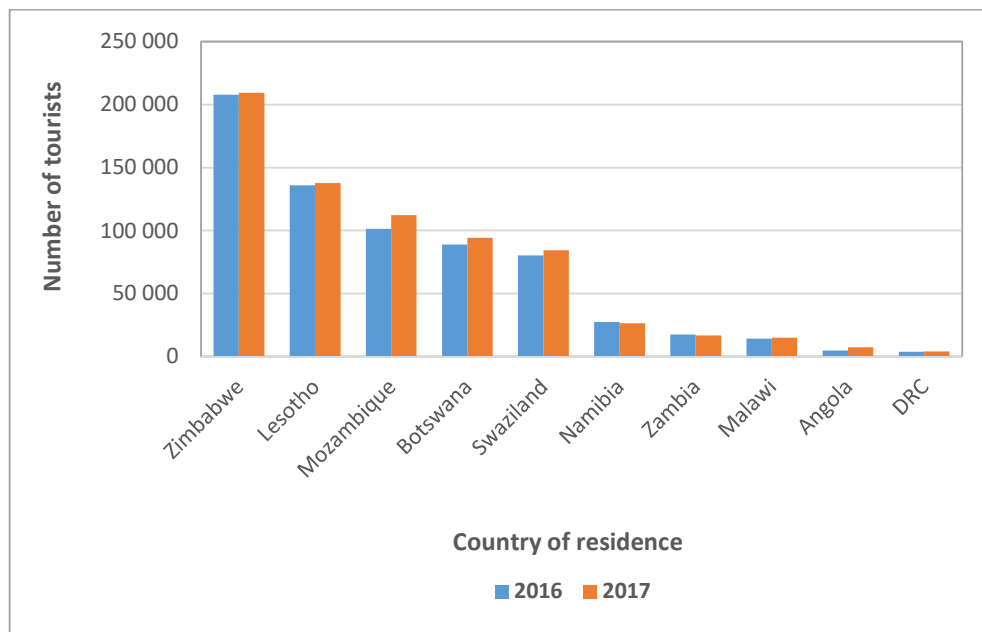


Figure 3 – Number of tourists from the ten leading 'other' African countries in December 2016 and December 2017

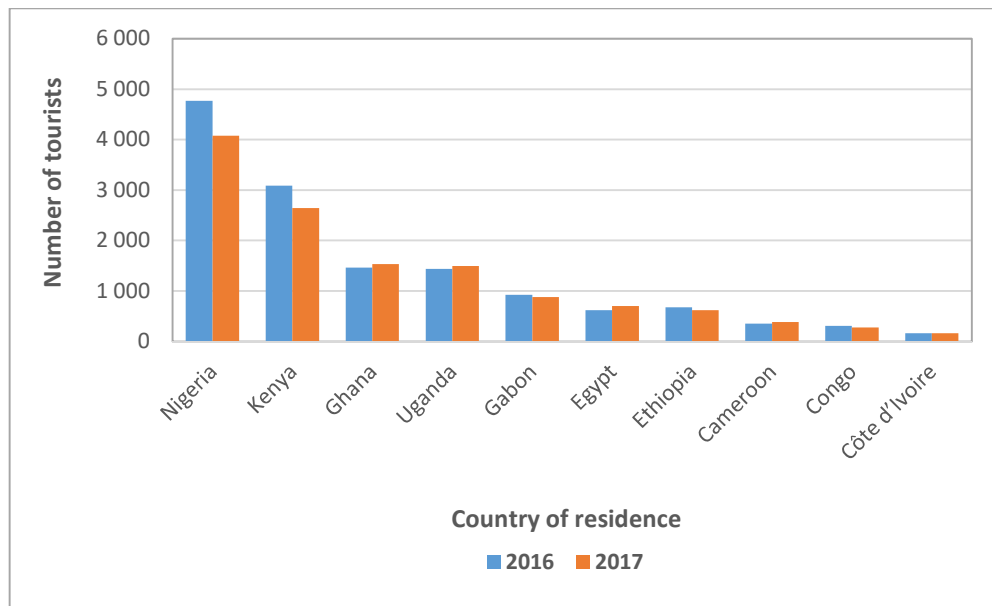


Figure 4 – Number of tourists from overseas countries by month: 2012 – 2017

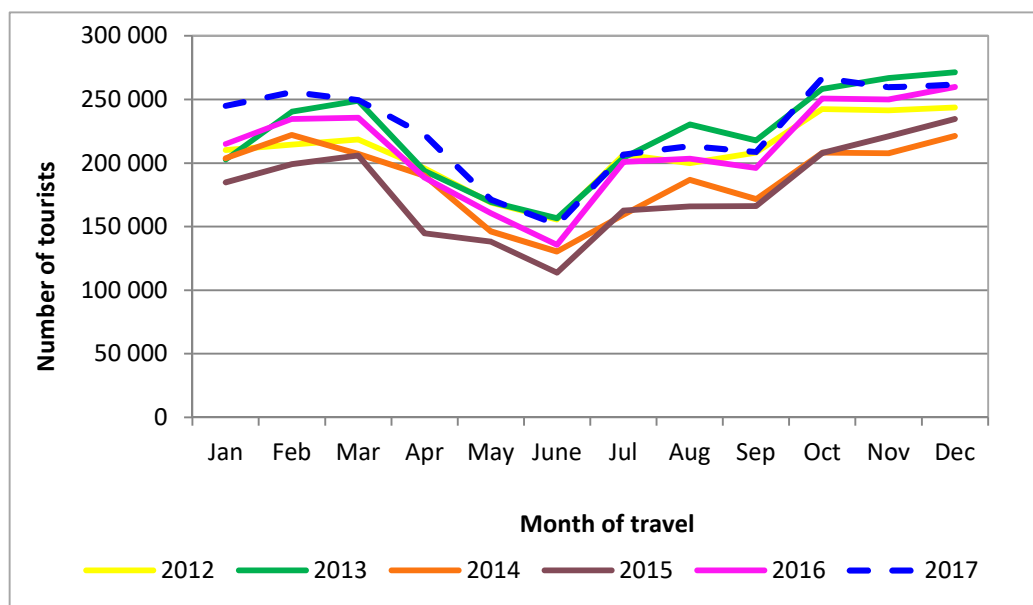


Figure 5 – Number of tourists from SADC countries by month: 2012 – 2017

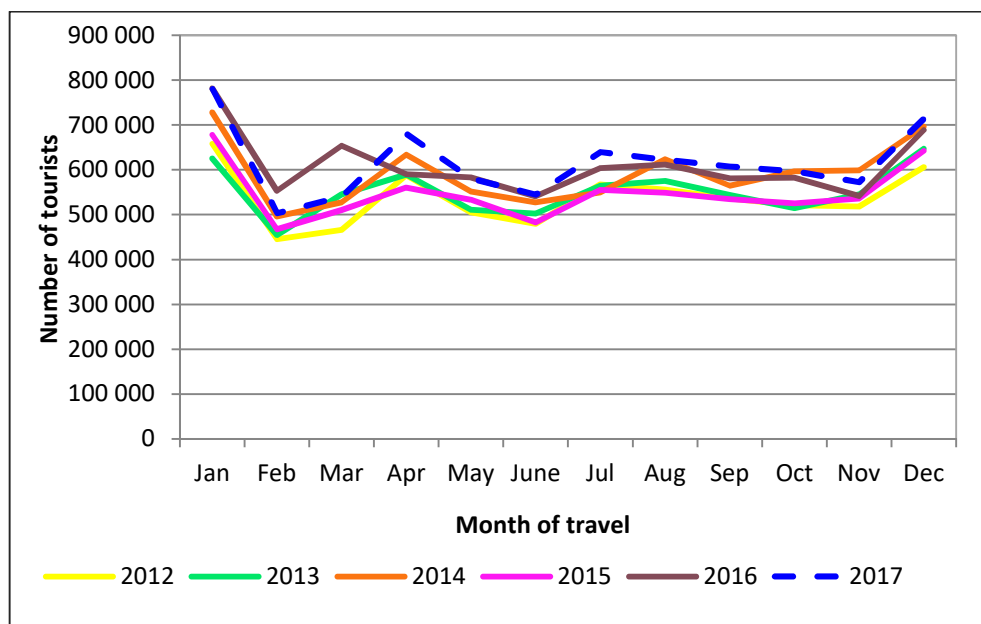
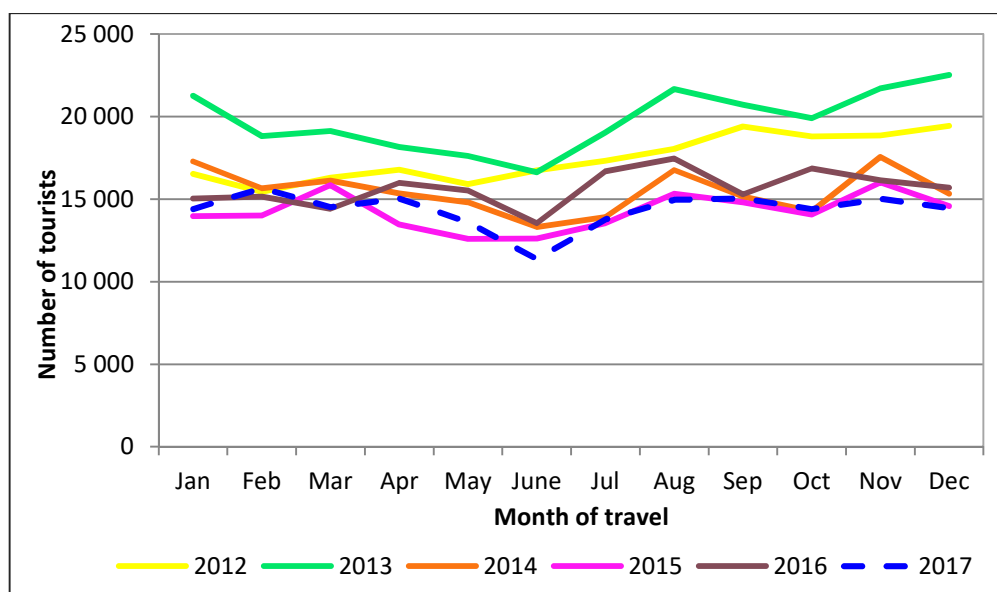


Figure 6 – Number of tourists from ‘other’ African countries by month: 2012 – 2017



3. Tables

Table 1 – Number of South African residents and foreign travellers by travel direction

Travel direction	December 2016	November 2017	December 2017	% change	
				Nov – Dec 2017	Dec 2016 – Dec 2017
Total	4 542 548	3 441 487	4 639 848	34,8%	2,1%
South African residents	1 333 870	830 885	1 397 631	68,2%	4,8%
Arrivals	566 635	409 446	590 949	44,3%	4,3%
Departures	766 332	420 665	805 778	91,5%	5,1%
Transit	903	774	904	16,8%	0,1%
Foreign travellers	3 208 678	2 610 602	3 242 217	24,2%	1,0%
Arrivals	1 554 048	1 329 025	1 561 724	17,5%	0,5%
Departures	1 589 855	1 215 768	1 621 875	33,4%	2,0%
Transit	64 775	65 809	58 618	-10,9%	-9,5%
Foreign arrivals	1 554 048	1 329 025	1 561 724	17,5%	0,5%
Non-visitors	81 590	83 233	82 894	-0,4%	1,6%
Visitors	1 472 458	1 245 792	1 478 830	18,7%	0,4%
Visitors	1 472 458	1 245 792	1 478 830	18,7%	0,4%
Arrivals only	357 103	291 069	368 060	26,5%	3,1%
Single trips	527 960	457 920	543 146	18,6%	2,9%
Multiple trips	587 395	496 803	567 624	14,3%	-3,4%
Visitors	1 472 458	1 245 792	1 478 830	18,7%	0,4%
Same-day	507 351	396 826	487 251	22,8%	-4,0%
Overnight (tourists)	965 107	848 966	991 579	16,8%	2,7%

Table 2 – Number of South African residents and foreign travellers by travel direction and mode of travel

Travel direction	Total	Air					Road	Sea
		Cape Town	King Shaka	O.R. Tambo	Other airports	Total		
Total	4 639 848	275 955	36 704	884 594	6 136	1 203 389	3 399 461	36 998
South African residents	1 397 631	80 355	26 702	381 794	3 394	492 245	881 393	23 993
Arrivals	590 949	34 420	11 659	166 931	1 548	214 558	363 714	12 677
Departures	805 778	45 935	15 043	213 959	1 846	276 783	517 679	11 316
Transit	904	-	-	904	-	904	-	-
Foreign travellers	3 242 217	195 600	10 002	502 800	2 742	711 144	2 518 068	13 005
Arrivals	1 561 724	104 556	5 479	230 650	965	341 650	1 214 338	5 736
Departures	1 621 875	90 936	4 523	213 640	1 777	310 876	1 303 730	7 269
Transit	58 618	108	-	58 510	-	58 618	-	-
Visitors	1 478 830	101 428	4 830	219 856	718	326 832	1 151 340	658
Same-day	487 251	615	20	17 217	113	17 965	469 103	183
Tourist	991 579	100 813	4 810	202 639	605	308 867	682 237	475

Table 3 – Number of tourists by country of residence and mode of travel (December 2017)

Country of residence	December		Air					Road	Sea
	2016	2017	Cape Town	King Shaka	O.R. Tambo	Other	Total		
Total	965 107	991 579	100 813	4 810	202 639	605	308 867	682 237	475
Overseas	259 724	261 728	91 661	3 735	145 236	479	241 111	20 427	190
Europe	168 611	167 732	70 305	2 624	81 389	140	154 458	13 189	85
Austria	3 308	3 160	1 569	56	1 340	1	2 966	193	1
Belgium	4 865	5 116	2 081	41	2 485	1	4 608	507	1
Denmark	2 516	2 420	651	16	1 600	-	2 267	150	3
France	13 952	14 364	4 275	113	7 853	8	12 249	2 111	4
Germany	31 603	32 560	15 436	302	14 195	40	29 973	2 578	9
Ireland	3 883	3 929	1 878	133	1 736	7	3 754	175	-
Italy	6 378	5 762	2 473	106	2 813	9	5 401	359	2
Norway	2 312	2 327	1 034	23	1 045	4	2 106	218	3
Portugal	4 074	3 444	799	27	1 578	6	2 410	1 034	-
Spain	3 174	2 854	780	21	1 803	1	2 605	249	-
Sweden	8 006	8 527	4 241	92	3 797	2	8 132	395	-
Switzerland	6 320	6 410	3 228	57	2 673	5	5 963	444	3
The Netherlands	14 986	15 063	6 592	107	6 527	15	13 241	1 817	5
UK	53 462	50 636	20 532	1 312	26 575	36	48 455	2 135	46
Other	9 772	11 160	4 736	218	5 369	5	10 328	824	8
North America	38 148	41 116	11 469	274	26 280	252	38 275	2 773	68
Canada	6 839	7 132	2 412	47	4 148	17	6 624	487	21
USA	31 309	33 984	9 057	227	22 132	235	31 651	2 286	47
Central and South America	9 314	11 132	1 832	22	8 674	13	10 541	585	6
Argentina	930	920	53	1	828	-	882	38	-
Brazil	6 473	8 096	1 464	13	6 215	6	7 698	397	1
Chile	409	452	24	1	391	-	416	36	-
Other	1 502	1 664	291	7	1 240	7	1 545	114	5

Table 3 – Number of tourists by country of residence and mode of travel (December 2017) (continued)

Country of residence	December		Air					Road	Sea
	2016	2017	Cape Town	King Shaka	O.R. Tambo	Other	Total		
Australasia	16 021	15 005	2 222	485	11 586	47	14 340	649	16
Australia	12 829	12 758	1 715	332	10 093	42	12 182	569	7
New Zealand	3 149	2 202	478	151	1 480	5	2 114	79	9
Other	43	45	29	2	13	-	44	1	-
Middle East	3 522	3 609	1 021	22	2 415	1	3 459	149	1
Israel	1 851	1 972	422	-	1 465	-	1 887	85	-
Lebanon	314	331	92	2	214	-	308	23	-
Saudi Arabia	330	408	118	10	272	1	401	7	-
Other	1 027	898	389	10	464	-	863	34	1
Asia	24 108	23 134	4 812	308	14 892	26	20 038	3 082	14
Bangladesh	433	395	78	9	150	-	237	158	-
China	7 425	5 276	862	35	3 941	3	4 841	435	-
India	6 581	8 039	1 404	128	5 434	7	6 973	1 060	6
Japan	1 784	1 765	305	30	1 289	-	1 624	141	-
Malaysia	855	938	486	16	399	3	904	29	5
Pakistan	1 312	1 298	148	31	619	-	798	500	-
Philippines	668	579	104	8	315	-	427	151	1
Singapore	1 132	1 402	675	5	680	10	1 370	31	1
South Korea	1 880	1 834	393	24	1 084	3	1 504	330	-
Thailand	636	537	130	7	374	-	511	26	-
Other	1 402	1 071	227	15	607	-	849	221	1
Africa	704 297	728 850	9 114	1 073	56 652	126	66 965	661 600	285
SADC	688 599	714 389	7 606	1 038	45 273	102	54 019	660 091	279
Angola	4 723	7 293	3 083	2	3 806	2	6 893	398	2
Botswana	88 907	94 194	307	301	2 102	29	2 739	91 407	48
DRC	3 898	4 117	132	5	3 035	1	3 173	943	1
Lesotho	135 921	137 754	8	4	513	-	525	137 192	37

Table 3 – Number of tourists by country of residence and mode of travel (December 2017) (continued)

Country of residence	December		Air					Road	Sea
	2016	2017	Cape Town	King Shaka	O.R. Tambo	Other	Total		
Madagascar	180	141	3	-	129	-	132	9	-
Malawi	14 180	15 032	21	1	2 472	13	2 507	12 520	5
Mauritius	1 756	2 053	474	95	1 360	-	1 929	117	7
Mozambique	101 420	112 326	8	21	2 884	5	2 918	109 404	4
Namibia	27 399	26 551	3 075	297	3 197	6	6 575	19 887	89
Seychelles	1 080	739	6	1	712	-	719	18	2
Swaziland	80 193	84 289	3	8	487	-	498	83 787	4
Tanzania	3 764	3 564	158	2	2 227	7	2 394	1 169	1
Zambia	17 424	16 857	71	250	4 444	1	4 766	12 081	10
Zimbabwe	207 754	209 479	257	51	17 905	38	18 251	191 159	69
'Other' African	15 698	14 461	1 508	35	11 379	24	12 946	1 509	6
East and Central Africa	7 215	6 632	967	5	5 029	7	6 008	623	1
Burundi	137	72	26	-	45	-	71	1	-
Cameroon	350	387	37	1	291	2	331	56	-
Central African Republic	8	16	1	-	14	-	15	1	-
Chad	20	25	-	-	25	-	25	-	-
Comoros	44	9	2	-	7	-	9	-	-
Congo	307	274	74	-	194	1	269	5	-
Djibouti	5	8	-	-	8	-	8	-	-
Equatorial Guinea	50	34	1	-	33	-	34	-	-
Eritrea	61	61	1	-	56	-	57	4	-
Ethiopia	678	620	88	2	456	-	546	74	-
Gabon	924	879	108	-	761	3	872	6	1
Kenya	3 091	2 642	501	2	1 886	1	2 390	252	-
Réunion	3	-	-	-	-	-	-	-	-
Rwanda	75	59	5	-	45	-	50	9	-
São Tomé and Príncipe	2	3	1	-	2	-	3	-	-
Somalia	22	47	5	-	32	-	37	10	-
Uganda	1 438	1 496	117	-	1 174	-	1 291	205	-

Table 3 – Number of tourists by country of residence and mode of travel (December 2017) (concluded)

Country of residence	December		Air					Road	Sea
	2016	2017	Cape Town	King Shaka	O.R. Tambo	Other	Total		
West Africa	7 274	6 612	292	6	5 492	17	5 807	801	4
Benin	122	96	2	-	88	-	90	6	-
Burkina Faso	43	35	3	-	31	-	34	1	-
Cape Verde Island	56	35	10	-	21	-	31	4	-
Côte d'Ivoire	161	163	7	-	138	1	146	17	-
Gambia	41	45	2	-	41	-	43	2	-
Ghana	1 461	1 535	31	-	1 398	13	1 442	92	1
Guinea	146	148	7	-	50	-	57	91	-
Guinea-Bissau	7	9	2	-	3	-	5	4	-
Liberia	57	68	8	-	59	-	67	1	-
Mali	105	106	6	-	31	-	37	69	-
Mauritania	10	15	-	-	15	-	15	-	-
Niger	20	17	1	-	16	-	17	-	-
Nigeria	4 772	4 079	196	6	3 396	3	3 601	475	3
Saint Helena	9	12	2	-	10	-	12	-	-
Senegal	181	162	6	-	133	-	139	23	-
Sierra Leone	51	53	2	-	39	-	41	12	-
Togo	32	34	7	-	23	-	30	4	-
North Africa	1 209	1 217	249	24	858	-	1 131	85	1
Algeria	80	62	15	-	44	-	59	3	-
Egypt	620	703	109	13	541	-	663	40	-
Libya	114	57	19	2	19	-	40	17	-
Morocco	138	130	49	4	64	-	117	12	1
South Sudan	69	81	2	-	78	-	80	1	-
The Sudan	120	120	39	1	72	-	112	8	-
Tunisia	67	63	16	4	39	-	59	4	-
Western Sahara	1	1	-	-	1	-	1	-	-
Unspecified	1 086	1 001	38	2	751	-	791	210	-

Table 4 – Number of tourists by country of residence and purpose of visit

Country of residence	December		Purpose of visit (December 2017)		
	2016	2017	Business	Holiday	Study
Total	965 107	991 579	13 109	975 522	2 948
Overseas	259 724	261 728	3 918	256 932	878
Europe	168 611	167 732	2 292	164 931	509
Austria	3 308	3 160	29	3 125	6
Belgium	4 865	5 116	72	5 025	19
Denmark	2 516	2 420	38	2 370	12
France	13 952	14 364	213	14 070	81
Germany	31 603	32 560	394	32 060	106
Ireland	3 883	3 929	39	3 883	7
Italy	6 378	5 762	135	5 606	21
Norway	2 312	2 327	30	2 287	10
Portugal	4 074	3 444	29	3 402	13
Spain	3 174	2 854	55	2 785	14
Sweden	8 006	8 527	114	8 395	18
Switzerland	6 320	6 410	49	6 343	18
The Netherlands	14 986	15 063	137	14 858	68
UK	53 462	50 636	665	49 886	85
Other	9 772	11 160	293	10 836	31
North America	38 148	41 116	479	40 532	105
Canada	6 839	7 132	74	7 043	15
USA	31 309	33 984	405	33 489	90
Central and South America	9 314	11 132	71	11 021	40
Argentina	930	920	11	908	1
Brazil	6 473	8 096	27	8 044	25
Chile	409	452	2	448	2
Other	1 502	1 664	31	1 621	12

Table 4 – Number of tourists by country of residence and purpose of visit (continued)

Country of residence	December		Purpose of visit (December 2017)		
	2016	2017	Business	Holiday	Study
Australasia	16 021	15 005	69	14 924	12
Australia	12 829	12 758	60	12 689	9
New Zealand	3 149	2 202	9	2 190	3
Other	43	45	-	45	-
Middle East	3 522	3 609	106	3 456	47
Israel	1 851	1 972	32	1 938	2
Lebanon	314	331	25	306	-
Saudi Arabia	330	408	12	385	11
Other	1 027	898	37	827	34
Asia	24 108	23 134	901	22 068	165
Bangladesh	433	395	27	362	6
China	7 425	5 276	279	4 977	20
India	6 581	8 039	360	7 621	58
Japan	1 784	1 765	77	1 672	16
Malaysia	855	938	16	918	4
Pakistan	1 312	1 298	49	1 241	8
Philippines	668	579	15	561	3
Singapore	1 132	1 402	18	1 380	4
South Korea	1 880	1 834	32	1 778	24
Thailand	636	537	4	525	8
Other	1 402	1 071	24	1 033	14
Africa	704 297	728 850	9 122	717 659	2 069
SADC	688 599	714 389	8 528	704 187	1 674
Angola	4 723	7 293	53	7 137	103
Botswana	88 907	94 194	608	93 431	155
DRC	3 898	4 117	93	3 890	134
Lesotho	135 921	137 754	895	136 702	157

Table 4 – Number of tourists by country of residence and purpose of visit (continued)

Country of residence	December		Purpose of visit (December 2017)		
	2016	2017	Business	Holiday	Study
Madagascar	180	141	7	130	4
Malawi	14 180	15 032	297	14 701	34
Mauritius	1 756	2 053	43	2 001	9
Mozambique	101 420	112 326	1 417	110 850	59
Namibia	27 399	26 551	1 401	24 945	205
Seychelles	1 080	739	4	733	2
Swaziland	80 193	84 289	174	83 824	291
Tanzania	3 764	3 564	54	3 484	26
Zambia	17 424	16 857	1 171	15 619	67
Zimbabwe	207 754	209 479	2 311	206 740	428
'Other' African	15 698	14 461	594	13 472	395
East and Central Africa	7 215	6 632	282	6 184	166
Burundi	137	72	2	67	3
Cameroon	350	387	23	338	26
Central African Republic	8	16	1	14	1
Chad	20	25	1	23	1
Comoros	44	9	1	6	2
Congo	307	274	4	249	21
Djibouti	5	8	2	6	-
Equatorial Guinea	50	34	3	29	2
Eritrea	61	61	-	61	-
Ethiopia	678	620	55	560	5
Gabon	924	879	5	833	41
Kenya	3 091	2 642	129	2 473	40
Réunion	3	-	-	-	-
Rwanda	75	59	3	52	4
São Tomé and Príncipe	2	3	-	3	-
Somalia	22	47	1	45	1
Uganda	1 438	1 496	52	1 425	19

Table 4 – Number of tourists by country of residence and purpose of visit (concluded)

Country of residence	December		Purpose of visit (December 2017)		
	2016	2017	Business	Holiday	Study
West Africa	7 274	6 612	230	6 195	187
Benin	122	96	3	91	2
Burkina Faso	43	35	6	29	-
Cape Verde Island	56	35	-	35	-
Côte d'Ivoire	161	163	5	155	3
Gambia	41	45	2	41	2
Ghana	1 461	1 535	69	1 446	20
Guinea	146	148	4	139	5
Guinea-Bissau	7	9	1	8	-
Liberia	57	68	9	58	1
Mali	105	106	5	101	-
Mauritania	10	15	2	13	-
Niger	20	17	1	14	2
Nigeria	4 772	4 079	103	3 828	148
Saint Helena	9	12	-	12	-
Senegal	181	162	12	148	2
Sierra Leone	51	53	4	47	2
Togo	32	34	4	30	-
North Africa	1 209	1 217	82	1 093	42
Algeria	80	62	9	52	1
Egypt	620	703	39	656	8
Libya	114	57	2	36	19
Morocco	138	130	15	115	-
South Sudan	69	81	1	79	1
The Sudan	120	120	9	100	11
Tunisia	67	63	7	54	2
Western Sahara	1	1	-	1	-
Unspecified	1 086	1 001	69	931	1

Table 5 – Number of tourists from overseas, SADC and 'other' African regions by sex and age group

Sex	Age group	December		Region (December 2017)			
		2016	2017	Overseas	SADC	'Other' African	Unspecified
All	Total	965 107	991 579	261 728	714 389	14 461	1 001
	0-14	98 549	96 484	30 874	63 769	1 825	16
	15-64	826 358	852 205	206 004	633 005	12 233	963
	65+	40 200	42 890	24 850	17 615	403	22
Male	Total	506 631	521 933	135 580	377 380	8 393	580
	0-14	48 802	47 660	15 687	31 071	894	8
	15-64	438 460	453 720	107 098	338 768	7 300	554
	65+	19 369	20 553	12 795	7 541	199	18
Female	Total	458 476	469 646	126 148	337 009	6 068	421
	0-14	49 747	48 824	15 187	32 698	931	8
	15-64	387 898	398 485	98 906	294 237	4 933	409
	65+	20 831	22 337	12 055	10 074	204	4

4. Annexures

4.1 Annexure A – Number of tourists: Quarter 3, 2017 – Quarter 4, 2017 changes by country of residence and month of travel

Country of residence	Quarter 3, 2017 – Quarter 4, 2017									
	Total Qtr 3 – Qtr 4	Jul	Aug	Sep	Qtr 3 2017	Oct	Nov	Dec	Qtr 4 2017	% change Qtr 3 – Qtr 4
Grand total	5 267 861	861 731	852 339	833 078	2 547 148	880 168	848 966	991 579	2 720 713	6,8%
Overseas	1 417 309	206 737	213 294	208 720	628 751	267 025	259 805	261 728	788 558	25,4%
Europe	876 728	113 098	123 379	115 148	351 625	176 969	180 402	167 732	525 103	49,3%
Austria	15 772	1 869	2 050	1 748	5 667	3 085	3 860	3 160	10 105	78,3%
Belgium	31 362	6 326	4 345	4 155	14 826	5 755	5 665	5 116	16 536	11,5%
Denmark	13 285	1 998	1 058	1 815	4 871	3 232	2 762	2 420	8 414	72,7%
France	104 358	13 687	15 630	13 102	42 419	25 221	22 354	14 364	61 939	46,0%
Germany	185 302	14 419	20 193	26 282	60 894	46 290	45 558	32 560	124 408	104,3%
Ireland	16 185	2 228	2 087	2 104	6 419	2 862	2 975	3 929	9 766	52,1%
Italy	37 372	5 102	11 410	4 604	21 116	5 659	4 835	5 762	16 256	-23,0%
Norway	8 910	1 176	609	939	2 724	1 527	2 332	2 327	6 186	127,1%
Portugal	18 347	2 381	3 155	2 861	8 397	2 895	3 611	3 444	9 950	18,5%
Spain	24 482	4 057	6 177	3 938	14 172	4 144	3 312	2 854	10 310	-27,3%
Sweden	23 883	1 327	1 098	1 757	4 182	4 773	6 401	8 527	19 701	371,1%
Switzerland	31 605	3 412	2 324	4 272	10 008	7 651	7 536	6 410	21 597	115,8%
The Netherlands	96 464	19 832	15 741	12 246	47 819	17 211	16 371	15 063	48 645	1,7%
UK	218 938	30 076	30 483	28 904	89 463	38 350	40 489	50 636	129 475	44,7%
Other	50 463	5 208	7 019	6 421	18 648	8 314	12 341	11 160	31 815	70,6%
North America	226 406	40 686	37 272	38 535	116 493	36 277	32 520	41 116	109 913	-5,6%
Canada	34 661	4 008	4 373	5 984	14 365	6 949	6 215	7 132	20 296	41,3%
USA	191 745	36 678	32 899	32 551	102 128	29 328	26 305	33 984	89 617	-12,3%
Central and South America	54 119	9 866	6 934	8 565	25 365	9 341	8 281	11 132	28 754	13,4%
Argentina	5 836	1 149	724	948	2 821	1 214	881	920	3 015	6,9%
Brazil	35 429	6 092	4 290	5 493	15 875	5 976	5 482	8 096	19 554	23,2%
Chile	2 724	495	347	564	1 406	477	389	452	1 318	-6,3%
Other	10 130	2 130	1 573	1 560	5 263	1 674	1 529	1 664	4 867	-7,5%

Annexure A – Number of tourists: Quarter 3, 2017 – Quarter 4, 2017 changes by country of residence and month of travel (continued)

Country of residence	Quarter 3, 2017 – Quarter 4, 2017									
	Total Qtr 3 – Qtr 4	Jul	Aug	Sep	Qtr 3 2017	Oct	Nov	Dec	Qtr 4 2017	% change Qtr 3 – Qtr 4
Australasia	72 848	11 513	12 237	15 031	38 781	10 711	8 351	15 005	34 067	-12,2%
Australia	62 743	9 591	10 754	13 296	33 641	9 060	7 284	12 758	29 102	-13,5%
New Zealand	9 907	1 896	1 424	1 719	5 039	1 618	1 048	2 202	4 868	-3,4%
Other	198	26	59	16	101	33	19	45	97	-4,0%
Middle East	29 790	6 310	7 044	4 358	17 712	4 214	4 255	3 609	12 078	-31,8%
Iran	1 901	260	226	558	1 044	205	430	222	857	-17,9%
Israel	13 625	1 758	2 633	2 352	6 743	2 554	2 356	1 972	6 882	2,1%
Saudi Arabia	6 831	2 356	2 478	548	5 382	542	499	408	1 449	-73,1%
Other	7 433	1 936	1 707	900	4 543	913	970	1 007	2 890	-36,4%
Asia	157 418	25 264	26 428	27 083	78 775	29 513	25 996	23 134	78 643	-0,2%
China	47 896	7 137	8 265	9 142	24 544	9 076	9 000	5 276	23 352	-4,9%
India	46 079	7 315	7 325	7 676	22 316	8 306	7 418	8 039	23 763	6,5%
Japan	15 116	2 181	2 842	2 389	7 412	3 891	2 048	1 765	7 704	3,9%
Malaysia	5 038	677	908	1 132	2 717	622	761	938	2 321	-14,6%
Pakistan	7 574	1 488	1 299	1 138	3 925	1 092	1 259	1 298	3 649	-7,0%
Philippines	3 727	722	682	547	1 951	616	581	579	1 776	-9,0%
Singapore	5 341	801	817	833	2 451	682	806	1 402	2 890	17,9%
South Korea	11 224	2 088	2 018	1 691	5 797	1 930	1 663	1 834	5 427	-6,4%
Taiwan	3 356	813	479	660	1 952	650	447	307	1 404	-28,1%
Thailand	3 615	591	681	593	1 865	829	384	537	1 750	-6,2%
Other	8 452	1 451	1 112	1 282	3 845	1 819	1 629	1 159	4 607	19,8%
Africa	3 843 661	653 985	638 000	623 060	1 915 045	611 835	587 931	728 850	1 928 616	0,7%
SADC	3 755 936	640 193	623 031	608 003	1 871 227	597 424	572 896	714 389	1 884 709	0,7%
Angola	25 086	3 474	3 816	3 429	10 719	3 407	3 667	7 293	14 367	34,0%
Botswana	380 679	56 367	51 541	70 926	178 834	54 029	53 622	94 194	201 845	12,9%
DRC	17 131	3 059	3 458	2 259	8 776	2 104	2 134	4 117	8 355	-4,8%
Lesotho	834 164	169 080	121 114	136 638	426 832	144 151	125 427	137 754	407 332	-4,6%

Annexure A – Number of tourists: Quarter 3, 2017 – Quarter 4, 2017 changes by country of residence and month of travel (continued)

Country of residence	Quarter 3, 2017 – Quarter 4, 2017									
	Total Qtr 3 – Qtr 4	Jul	Aug	Sep	Qtr 3 2017	Oct	Nov	Dec	Qtr 4 2017	% change Qtr 3 – Qtr 4
Madagascar	1 168	188	241	195	624	189	214	141	544	-12,8%
Malawi	96 519	16 423	17 395	15 873	49 691	16 415	15 381	15 032	46 828	-5,8%
Mauritius	10 591	1 708	1 590	1 322	4 620	1 804	2 114	2 053	5 971	29,2%
Mozambique	681 059	119 689	116 232	110 076	345 997	109 904	112 832	112 326	335 062	-3,2%
Namibia	109 268	15 833	17 417	16 258	49 508	17 799	15 410	26 551	59 760	20,7%
Seychelles	3 601	412	484	425	1 321	615	926	739	2 280	72,6%
Swaziland	459 046	74 716	79 104	77 241	231 061	73 529	70 167	84 289	227 985	-1,3%
Tanzania	18 721	3 183	2 995	2 923	9 101	2 971	3 085	3 564	9 620	5,7%
Zambia	90 326	14 569	15 464	14 663	44 696	14 558	14 215	16 857	45 630	2,1%
Zimbabwe	1 028 577	161 492	192 180	155 775	509 447	155 949	153 702	209 479	519 130	1,9%
'Other' African	87 725	13 792	14 969	15 057	43 818	14 411	15 035	14 461	43 907	0,2%
East and Central Africa	37 422	6 000	6 475	6 625	19 100	5 715	5 975	6 632	18 322	-4,1%
Burundi	494	65	75	105	245	65	112	72	249	1,6%
Cameroon	2 440	406	376	429	1 211	415	427	387	1 229	1,5%
Central African Republic	80	5	17	14	36	13	15	16	44	22,2%
Chad	189	29	36	21	86	43	35	25	103	19,8%
Comoros	134	27	23	34	84	17	24	9	50	-40,5%
Congo	1 778	309	380	302	991	293	220	274	787	-20,6%
Djibouti	69	14	21	2	37	10	14	8	32	-13,5%
Equatorial Guinea	187	32	25	26	83	43	27	34	104	25,3%
Eritrea	379	81	61	72	214	54	50	61	165	-22,9%
Ethiopia	4 490	793	690	849	2 332	807	731	620	2 158	-7,5%
Gabon	4 435	833	1 205	737	2 775	437	344	879	1 660	-40,2%
Kenya	14 615	2 305	2 327	2 562	7 194	2 105	2 674	2 642	7 421	3,2%
Réunion	25	5	-	2	7	15	3	-	18	157,1%
Rwanda	453	72	113	65	250	71	73	59	203	-18,8%
São Tomé and Príncipe	36	4	7	4	15	8	10	3	21	40,0%
Somalia	398	58	80	80	218	79	54	47	180	-17,4%
Uganda	7 220	962	1 039	1 321	3 322	1 240	1 162	1 496	3 898	17,3%

Annexure A – Number of tourists: Quarter 3, 2017 – Quarter 4, 2017 changes by country of residence and month of travel (concluded)

Country of residence	Quarter 3, 2017 – Quarter 4, 2017									
	Total Qtr 3 – Qtr 4	Jul	Aug	Sep	Qtr 3 2017	Oct	Nov	Dec	Qtr 4 2017	% change Qtr 3 – Qtr 4
West Africa	42 195	6 513	7 289	7 031	20 833	7 282	7 468	6 612	21 362	2,5%
Benin	921	150	191	118	459	163	203	96	462	0,7%
Burkina Faso	452	62	80	56	198	132	87	35	254	28,3%
Cape Verde Island	299	42	53	84	179	37	48	35	120	-33,0%
Côte d'Ivoire	1 217	200	216	210	626	229	199	163	591	-5,6%
Gambia	306	60	56	58	174	39	48	45	132	-24,1%
Ghana	9 338	1 381	1 515	1 598	4 494	1 576	1 733	1 535	4 844	7,8%
Guinea	831	133	137	121	391	139	153	148	440	12,5%
Guinea-Bissau	55	10	11	8	29	4	13	9	26	-10,3%
Liberia	348	57	61	55	173	59	48	68	175	1,2%
Mali	770	117	120	127	364	148	152	106	406	11,5%
Mauritania	105	6	19	3	28	31	31	15	77	175,0%
Niger	144	16	25	17	58	29	40	17	86	48,3%
Nigeria	25 315	3 973	4 477	4 255	12 705	4 240	4 291	4 079	12 610	-0,7%
Saint Helena	140	21	15	36	72	26	30	12	68	-5,6%
Senegal	1 342	188	214	188	590	300	290	162	752	27,5%
Sierra Leone	363	52	50	61	163	86	61	53	200	22,7%
Togo	249	45	49	36	130	44	41	34	119	-8,5%
North Africa	8 108	1 279	1 205	1 401	3 885	1 414	1 592	1 217	4 223	8,7%
Algeria	676	94	132	138	364	102	148	62	312	-14,3%
Egypt	4 100	668	565	580	1 813	731	853	703	2 287	26,1%
Libya	464	61	62	112	235	84	88	57	229	-2,6%
Morocco	850	111	126	178	415	142	163	130	435	4,8%
South Sudan	426	59	55	81	195	95	55	81	231	18,5%
The Sudan	1 049	196	192	185	573	161	195	120	476	-16,9%
Tunisia	533	90	71	125	286	95	89	63	247	-13,6%
Western Sahara	10		2	2	4	4	1	1	6	50,0%
Unspecified	6 891	1 009	1 045	1 298	3 352	1 308	1 230	1 001	3 539	5,6%

4.2 Annexure B – Number of tourists: Quarter 4, 2016 – Quarter 4, 2017 changes by country of residence and month of travel

Country of residence	Quarter 4: 2016 – 2017									
	Total	Oct	Nov	Dec	Qtr 4 2016	Oct	Nov	Dec	Qtr 4 2017	% change 2016 – 2017
Total	5 346 125	850 956	809 349	965 107	2 625 412	880 168	848 966	991 579	2 720 713	3,6%
Overseas	1 549 036	250 737	250 017	259 724	760 478	267 025	259 805	261 728	788 558	3,7%
Europe	1 029 623	165 828	170 081	168 611	504 520	176 969	180 402	167 732	525 103	4,1%
Austria	20 060	3 276	3 371	3 308	9 955	3 085	3 860	3 160	10 105	1,5%
Belgium	32 295	5 871	5 023	4 865	15 759	5 755	5 665	5 116	16 536	4,9%
Denmark	16 956	3 223	2 803	2 516	8 542	3 232	2 762	2 420	8 414	-1,5%
France	114 431	19 009	19 531	13 952	52 492	25 221	22 354	14 364	61 939	18,0%
Germany	238 992	40 492	42 489	31 603	114 584	46 290	45 558	32 560	124 408	8,6%
Ireland	19 349	2 906	2 794	3 883	9 583	2 862	2 975	3 929	9 766	1,9%
Italy	32 282	5 181	4 467	6 378	16 026	5 659	4 835	5 762	16 256	1,4%
Norway	12 258	1 673	2 087	2 312	6 072	1 527	2 332	2 327	6 186	1,9%
Portugal	21 102	3 255	3 823	4 074	11 152	2 895	3 611	3 444	9 950	-10,8%
Spain	20 456	3 656	3 316	3 174	10 146	4 144	3 312	2 854	10 310	1,6%
Sweden	38 679	4 883	6 089	8 006	18 978	4 773	6 401	8 527	19 701	3,8%
Switzerland	42 989	7 880	7 192	6 320	21 392	7 651	7 536	6 410	21 597	1,0%
The Netherlands	96 345	16 988	15 726	14 986	47 700	17 211	16 371	15 063	48 645	2,0%
UK	262 719	39 696	40 086	53 462	133 244	38 350	40 489	50 636	129 475	-2,8%
Other	60 710	7 839	11 284	9 772	28 895	8 314	12 341	11 160	31 815	10,1%
North America	213 785	33 418	32 306	38 148	103 872	36 277	32 520	41 116	109 913	5,8%
Canada	38 429	5 835	5 459	6 839	18 133	6 949	6 215	7 132	20 296	11,9%
USA	175 356	27 583	26 847	31 309	85 739	29 328	26 305	33 984	89 617	4,5%
Central and South America	52 474	7 249	7 157	9 314	23 720	9 341	8 281	11 132	28 754	21,2%
Argentina	5 810	1 029	836	930	2 795	1 214	881	920	3 015	7,9%
Brazil	34 894	4 345	4 522	6 473	15 340	5 976	5 482	8 096	19 554	27,5%
Chile	2 498	426	345	409	1 180	477	389	452	1 318	11,7%
Other	9 272	1 449	1 454	1 502	4 405	1 674	1 529	1 664	4 867	10,5%

Annexure B – Number of tourists: Quarter 4, 2016 – Quarter 4, 2017 changes by country of residence and month of travel (continued)

Country of residence	Quarter 4: 2016 – 2017									
	Total	Oct	Nov	Dec	Qtr 4 2016	Oct	Nov	Dec	Qtr 4 2017	% change 2016 – 2017
Australasia	69 288	10 307	8 893	16 021	35 221	10 711	8 351	15 005	34 067	-3,3%
Australia	57 774	8 422	7 421	12 829	28 672	9 060	7 284	12 758	29 102	1,5%
New Zealand	11 310	1 846	1 447	3 149	6 442	1 618	1 048	2 202	4 868	-24,4%
Other	204	39	25	43	107	33	19	45	97	-9,3%
Middle East	24 909	5 133	4 176	3 522	12 831	4 214	4 255	3 609	12 078	-5,9%
Iran	1 853	290	449	257	996	205	430	222	857	-14,0%
Israel	14 346	3 520	2 093	1 851	7 464	2 554	2 356	1 972	6 882	-7,8%
Saudi Arabia	2 916	444	693	330	1 467	542	499	408	1 449	-1,2%
Other	5 794	879	941	1 084	2 904	913	970	1 007	2 890	-0,5%
Asia	158 957	28 802	27 404	24 108	80 314	29 513	25 996	23 134	78 643	-2,1%
China	51 301	9 648	10 876	7 425	27 949	9 076	9 000	5 276	23 352	-16,4%
India	45 238	7 527	7 367	6 581	21 475	8 306	7 418	8 039	23 763	10,7%
Japan	14 688	3 305	1 895	1 784	6 984	3 891	2 048	1 765	7 704	10,3%
Malaysia	4 768	873	719	855	2 447	622	761	938	2 321	-5,1%
Pakistan	7 564	1 314	1 289	1 312	3 915	1 092	1 259	1 298	3 649	-6,8%
Philippines	3 812	708	660	668	2 036	616	581	579	1 776	-12,8%
Singapore	5 292	615	655	1 132	2 402	682	806	1 402	2 890	20,3%
South Korea	10 006	1 241	1 458	1 880	4 579	1 930	1 663	1 834	5 427	18,5%
Taiwan	3 277	893	614	366	1 873	650	447	307	1 404	-25,0%
Thailand	3 687	789	512	636	1 937	829	384	537	1 750	-9,7%
Other	9 324	1 889	1 359	1 469	4 717	1 819	1 629	1 159	4 607	-2,3%
Africa	3 790 286	599 180	558 193	704 297	1 861 670	611 835	587 931	728 850	1 928 616	3,6%
SADC	3 697 690	582 324	542 058	688 599	1 812 981	597 424	572 896	714 389	1 884 709	4,0%
Angola	26 383	3 413	3 880	4 723	12 016	3 407	3 667	7 293	14 367	19,6%
Botswana	394 006	50 515	52 739	88 907	192 161	54 029	53 622	94 194	201 845	5,0%
DRC	16 139	2 000	1 886	3 898	7 784	2 104	2 134	4 117	8 355	7,3%
Lesotho	812 029	146 591	122 185	135 921	404 697	144 151	125 427	137 754	407 332	0,7%

Annexure B – Number of tourists: Quarter 4, 2016 – Quarter 4, 2017 changes by country of residence and month of travel (continued)

Country of residence	Quarter 4: 2016 – 2017									
	Total	Oct	Nov	Dec	Qtr 4 2016	Oct	Nov	Dec	Qtr 4 2017	% change 2016 – 2017
Madagascar	1 170	214	232	180	626	189	214	141	544	-13,1%
Malawi	89 774	14 829	13 937	14 180	42 946	16 415	15 381	15 032	46 828	9,0%
Mauritius	11 326	1 584	2 015	1 756	5 355	1 804	2 114	2 053	5 971	11,5%
Mozambique	631 568	97 978	97 108	101 420	296 506	109 904	112 832	112 326	335 062	13,0%
Namibia	120 387	17 498	15 730	27 399	60 627	17 799	15 410	26 551	59 760	-1,4%
Seychelles	5 915	1 073	1 482	1 080	3 635	615	926	739	2 280	-37,3%
Swaziland	452 068	76 511	67 379	80 193	224 083	73 529	70 167	84 289	227 985	1,7%
Tanzania	20 030	3 552	3 094	3 764	10 410	2 971	3 085	3 564	9 620	-7,6%
Zambia	92 117	14 585	14 478	17 424	46 487	14 558	14 215	16 857	45 630	-1,8%
Zimbabwe	1 024 778	151 981	145 913	207 754	505 648	155 949	153 702	209 479	519 130	2,7%
'Other' African	92 596	16 856	16 135	15 698	48 689	14 411	15 035	14 461	43 907	-9,8%
East and Central Africa	38 401	6 559	6 305	7 215	20 079	5 715	5 975	6 632	18 322	-8,8%
Burundi	518	65	67	137	269	65	112	72	249	-7,4%
Cameroon	2 456	477	400	350	1 227	415	427	387	1 229	0,2%
Central African Republic	79	14	13	8	35	13	15	16	44	25,7%
Chad	225	73	29	20	122	43	35	25	103	-15,6%
Comoros	128	20	14	44	78	17	24	9	50	-35,9%
Congo	1 613	285	234	307	826	293	220	274	787	-4,7%
Djibouti	62	11	14	5	30	10	14	8	32	6,7%
Equatorial Guinea	222	40	28	50	118	43	27	34	104	-11,9%
Eritrea	332	54	52	61	167	54	50	61	165	-1,2%
Ethiopia	4 327	763	728	678	2 169	807	731	620	2 158	-0,5%
Gabon	3 619	569	466	924	1 959	437	344	879	1 660	-15,3%
Kenya	16 260	2 670	3 078	3 091	8 839	2 105	2 674	2 642	7 421	-16,0%
Réunion	31	10	-	3	13	15	3	-	18	38,5%
Rwanda	421	79	64	75	218	71	73	59	203	-6,9%
São Tomé and Príncipe	33	6	4	2	12	8	10	3	21	75,0%
Somalia	265	41	22	22	85	79	54	47	180	111,8%
Uganda	7 810	1 382	1 092	1 438	3 912	1 240	1 162	1 496	3 898	-0,4%

Annexure B – Number of tourists: Quarter 4, 2016 – Quarter 4, 2017 changes by country of residence and month of travel (concluded)

Country of residence	Quarter 4: 2016 – 2017									
	Total	Oct	Nov	Dec	Qtr 4 2016	Oct	Nov	Dec	Qtr 4 2017	% change 2016 – 2017
West Africa	45 611	8 706	8 269	7 274	24 249	7 282	7 468	6 612	21 362	-11,9%
Benin	954	218	152	122	492	163	203	96	462	-6,1%
Burkina Faso	413	66	50	43	159	132	87	35	254	59,7%
Cape Verde Island	291	53	62	56	171	37	48	35	120	-29,8%
Côte d'Ivoire	1 208	247	209	161	617	229	199	163	591	-4,2%
Gambia	281	60	48	41	149	39	48	45	132	-11,4%
Ghana	9 771	1 697	1 769	1 461	4 927	1 576	1 733	1 535	4 844	-1,7%
Guinea	848	124	138	146	408	139	153	148	440	7,8%
Guinea-Bissau	60	17	10	7	34	4	13	9	26	-23,5%
Liberia	394	88	74	57	219	59	48	68	175	-20,1%
Mali	748	114	123	105	342	148	152	106	406	18,7%
Mauritania	120	25	8	10	43	31	31	15	77	79,1%
Niger	161	29	26	20	75	29	40	17	86	14,7%
Nigeria	28 100	5 553	5 165	4 772	15 490	4 240	4 291	4 079	12 610	-18,6%
Saint Helena	136	25	34	9	68	26	30	12	68	0,0%
Senegal	1 448	253	262	181	696	300	290	162	752	8,0%
Sierra Leone	433	86	96	51	233	86	61	53	200	-14,2%
Togo	245	51	43	32	126	44	41	34	119	-5,6%
North Africa	8 584	1 591	1 561	1 209	4 361	1 414	1 592	1 217	4 223	-3,2%
Algeria	690	159	139	80	378	102	148	62	312	-17,5%
Egypt	4 473	782	784	620	2 186	731	853	703	2 287	4,6%
Libya	509	84	82	114	280	84	88	57	229	-18,2%
Morocco	945	186	186	138	510	142	163	130	435	-14,7%
South Sudan	439	66	73	69	208	95	55	81	231	11,1%
The Sudan	1 000	197	207	120	524	161	195	120	476	-9,2%
Tunisia	520	116	90	67	273	95	89	63	247	-9,5%
Western Sahara	8	1		1	2	4	1	1	6	200,0%
Unspecified	6 803	1 039	1 139	1 086	3 264	1 308	1 230	1 001	3 539	8,4%

4.3 Annexure C – Number of tourists: Quarter 1 – 4, 2016, Quarter 1 – 4, 2017 and changes by country of residence

Country of residence	Quarter 1 – 4, 2016					Quarter 1 – 4, 2017					% change 2016 – 2017
	Qtr 1	Qtr 2	Qtr 3	Qtr 4	Total 2016	Qtr 1	Qtr 2	Qtr 3	Qtr 4	Total 2017	
Grand total	2 721 005	2 248 082	2 449 664	2 625 412	10 044 163	2 622 215	2 395 121	2 547 148	2 720 713	10 285 197	2,4%
Overseas	685 250	484 898	600 420	760 478	2 531 046	750 616	545 208	628 751	788 558	2 713 133	7,2%
Europe	460 808	245 684	333 014	504 520	1 544 026	501 000	283 120	351 625	525 103	1 660 848	7,6%
Austria	8 754	3 621	5 226	9 955	27 556	9 736	4 094	5 667	10 105	29 602	7,4%
Belgium	12 999	7 234	12 999	15 759	48 991	13 295	9 391	14 826	16 536	54 048	10,3%
Denmark	10 463	3 733	4 816	8 542	27 554	10 900	4 494	4 871	8 414	28 679	4,1%
France	40 121	27 932	33 681	52 492	154 226	55 437	36 370	42 419	61 939	196 165	27,2%
Germany	101 482	40 610	55 156	114 584	311 832	111 256	52 653	60 894	124 408	349 211	12,0%
Ireland	9 074	5 810	6 078	9 583	30 545	9 401	5 924	6 419	9 766	31 510	3,2%
Italy	12 781	10 819	21 148	16 026	60 774	13 191	10 563	21 116	16 256	61 126	0,6%
Norway	7 454	2 869	2 825	6 072	19 220	6 952	3 386	2 724	6 186	19 248	0,1%
Portugal	11 396	9 364	9 304	11 152	41 216	10 226	9 836	8 397	9 950	38 409	-6,8%
Spain	6 842	6 042	13 248	10 146	36 278	7 374	8 110	14 172	10 310	39 966	10,2%
Sweden	15 715	5 290	4 060	18 978	44 043	18 879	5 790	4 182	19 701	48 552	10,2%
Switzerland	16 282	7 914	9 572	21 392	55 160	18 048	9 371	10 008	21 597	59 024	7,0%
The Netherlands	33 674	22 619	43 980	47 700	147 973	39 183	23 974	47 819	48 645	159 621	7,9%
UK	147 639	75 303	91 654	133 244	447 840	147 358	81 605	89 463	129 475	447 901	0,0%
Other	26 132	16 524	19 267	28 895	90 818	29 764	17 559	18 648	31 815	97 786	7,7%
North America	91 831	101 168	109 321	103 872	406 192	98 387	113 110	116 493	109 913	437 903	7,8%
Canada	16 764	12 978	13 304	18 133	61 179	18 623	13 872	14 365	20 296	67 156	9,8%
USA	75 067	88 190	96 017	85 739	345 013	79 764	99 238	102 128	89 617	370 747	7,5%
Central and South America	14 659	12 712	16 455	23 720	67 546	29 498	23 965	25 365	28 754	107 582	59,3%
Argentina	3 118	1 595	2 009	2 795	9 517	6 163	2 875	2 821	3 015	14 874	56,3%
Brazil	7 224	6 942	9 308	15 340	38 814	17 393	14 975	15 875	19 554	67 797	74,7%
Chile	848	585	847	1 180	3 460	2 276	1 140	1 406	1 318	6 140	77,5%
Other	3 469	3 590	4 291	4 405	15 755	3 666	4 975	5 263	4 867	18 771	19,1%

Annexure C – Number of tourists: Quarter 1 – 4, 2016, Quarter 1 – 4, 2017 and changes by country of residence (continued)

Country of residence	Quarter 1 – 4, 2016					Quarter 1 – 4, 2017					% change 2016 – 2017
	Qtr 1	Qtr 2	Qtr 3	Qtr 4	Total 2016	Qtr 1	Qtr 2	Qtr 3	Qtr 4	Total 2017	
Australasia	28 029	30 622	37 984	35 221	131 856	27 808	33 057	38 781	34 067	133 713	1,4%
Australia	23 449	25 414	31 611	28 672	109 146	24 663	28 851	33 641	29 102	116 257	6,5%
New Zealand	4 537	5 156	6 308	6 442	22 443	3 086	4 101	5 039	4 868	17 094	-23,8%
Other	43	52	65	107	267	59	105	101	97	362	35,6%
Middle East	12 585	10 435	17 685	12 831	53 536	15 757	10 359	17 712	12 078	55 906	4,4%
Iran	2 285	583	1 052	996	4 916	2 893	517	1 044	857	5 311	8,0%
Israel	5 895	4 968	6 484	7 464	24 811	7 383	4 655	6 743	6 882	25 663	3,4%
Saudi Arabia	1 770	2 164	5 647	1 467	11 048	2 336	1 997	5 382	1 449	11 164	1,0%
Other	2 635	2 720	4 502	2 904	12 761	3 145	3 190	4 543	2 890	13 768	7,9%
Asia	77 338	84 277	85 961	80 314	327 890	78 166	81 597	78 775	78 643	317 181	-3,3%
China	31 556	26 540	30 901	27 949	116 946	29 479	19 694	24 544	23 352	97 069	-17,0%
India	19 960	31 060	22 882	21 475	95 377	19 651	32 191	22 316	23 763	97 921	2,7%
Japan	6 142	5 705	6 971	6 984	25 802	6 585	5 709	7 412	7 704	27 410	6,2%
Malaysia	1 478	2 038	2 750	2 447	8 713	1 683	2 561	2 717	2 321	9 282	6,5%
Pakistan	3 780	4 031	3 964	3 915	15 690	4 140	3 894	3 925	3 649	15 608	-0,5%
Philippines	1 252	1 648	2 175	2 036	7 111	1 280	2 197	1 951	1 776	7 204	1,3%
Singapore	1 485	2 462	2 018	2 402	8 367	1 574	4 049	2 451	2 890	10 964	31,0%
South Korea	5 059	3 624	5 578	4 579	18 840	6 848	4 101	5 797	5 427	22 173	17,7%
Taiwan	1 614	1 500	1 956	1 873	6 943	1 520	1 285	1 952	1 404	6 161	-11,3%
Thailand	1 350	1 778	2 093	1 937	7 158	1 493	1 770	1 865	1 750	6 878	-3,9%
Other	3 662	3 891	4 673	4 717	16 943	3 913	4 146	3 845	4 607	16 511	-2,5%
Africa	2 033 232	1 760 260	1 846 350	1 861 670	7 501 512	1 868 827	1 846 854	1 915 045	1 928 616	7 559 342	0,8%
SADC	1 988 613	1 715 198	1 796 892	1 812 981	7 313 684	1 824 223	1 806 800	1 871 227	1 884 709	7 386 959	1,0%
Angola	12 951	8 708	9 933	12 016	43 608	14 186	10 027	10 719	14 367	49 299	13,1%
Botswana	164 388	149 176	174 103	192 161	679 828	127 553	173 147	178 834	201 845	681 379	0,2%
DRC	6 998	6 028	8 776	7 784	29 586	6 364	6 180	8 776	8 355	29 675	0,3%
Lesotho	492 832	421 740	437 789	404 697	1 757 058	476 879	436 168	426 832	407 332	1 747 211	-0,6%

Annexure C – Number of tourists: Quarter 1 – 4, 2016, Quarter 1 – 4, 2017 and changes by country of residence (continued)

Country of residence	Quarter 1 – 4, 2016					Quarter 1 – 4, 2017					% change 2016 – 2017
	Qtr 1	Qtr 2	Qtr 3	Qtr 4	Total 2016	Qtr 1	Qtr 2	Qtr 3	Qtr 4	Total 2017	
Madagascar	649	586	559	626	2 420	656	622	624	544	2 446	1,1%
Malawi	34 437	34 353	42 281	42 946	154 017	39 859	38 636	49 691	46 828	175 014	13,6%
Mauritius	4 930	4 545	4 407	5 355	19 237	4 624	4 313	4 620	5 971	19 528	1,5%
Mozambique	379 134	301 964	290 654	296 506	1 268 258	336 474	321 712	345 997	335 062	1 339 245	5,6%
Namibia	51 638	52 043	50 356	60 627	214 664	45 965	53 514	49 508	59 760	208 747	-2,8%
Seychelles	2 700	1 725	1 650	3 635	9 710	2 819	1 732	1 321	2 280	8 152	-16,0%
Swaziland	220 578	212 632	236 325	224 083	893 618	197 032	220 914	231 061	227 985	876 992	-1,9%
Tanzania	9 209	9 196	9 217	10 410	38 032	9 201	8 384	9 101	9 620	36 306	-4,5%
Zambia	40 851	43 377	44 052	46 487	174 767	39 964	42 743	44 696	45 630	173 033	-1,0%
Zimbabwe	567 318	469 125	486 790	505 648	2 028 881	522 647	488 708	509 447	519 130	2 039 932	0,5%
'Other' African	44 619	45 062	49 458	48 689	187 828	44 604	40 054	43 818	43 907	172 383	-8,2%
East and Central Africa	17 199	16 199	20 586	20 079	74 063	18 882	16 259	19 100	18 322	72 563	-2,0%
Burundi	280	189	245	269	983	216	168	245	249	878	-10,7%
Cameroon	1 506	1 268	1 365	1 227	5 366	1 466	1 188	1 211	1 229	5 094	-5,1%
Central African Republic	53	29	36	35	153	28	39	36	44	147	-3,9%
Chad	45	86	79	122	332	76	78	86	103	343	3,3%
Comoros	45	46	50	78	219	36	49	84	50	219	0,0%
Congo	1 055	696	1 014	826	3 591	915	671	991	787	3 364	-6,3%
Djibouti	26	33	15	30	104	32	28	37	32	129	24,0%
Equatorial Guinea	129	106	154	118	507	132	131	83	104	450	-11,2%
Eritrea	144	159	176	167	646	147	139	214	165	665	2,9%
Ethiopia	1 767	2 047	2 434	2 169	8 417	2 113	1 995	2 332	2 158	8 598	2,2%
Gabon	2 247	1 632	3 502	1 959	9 340	2 182	1 365	2 775	1 660	7 982	-14,5%
Kenya	6 568	6 521	7 391	8 839	29 319	7 557	6 772	7 194	7 421	28 944	-1,3%
Réunion	26	32	0	13	71	26	17	7	18	68	-4,2%
Rwanda	255	229	254	218	956	276	218	250	203	947	-0,9%
São Tomé and Príncipe	28	28	22	12	90	23	13	15	21	72	-20,0%
Somalia	77	79	88	85	329	56	112	218	180	566	72,0%
Uganda	2 948	3 019	3 761	3 912	13 640	3 601	3 276	3 322	3 898	14 097	3,4%

Annexure C – Number of tourists: Quarter 1 – 4, 2016, Quarter 1 – 4, 2017 and changes by country of residence (concluded)

Country of residence	Quarter 1 – 4, 2016					Quarter 1 – 4, 2017					% change 2016 – 2017
	Qtr 1	Qtr 2	Qtr 3	Qtr 4	Total 2016	Qtr 1	Qtr 2	Qtr 3	Qtr 4	Total 2017	
West Africa	23 418	24 648	24 720	24 249	97 035	21 243	19 935	20 833	21 362	83 373	-14,1%
Benin	507	566	508	492	2 073	432	354	459	462	1 707	-17,7%
Burkina Faso	147	173	142	159	621	174	147	198	254	773	24,5%
Cape Verde Island	141	114	132	171	558	151	145	179	120	595	6,6%
Côte d'Ivoire	621	691	637	617	2 566	692	548	626	591	2 457	-4,2%
Gambia	79	136	106	149	470	113	162	174	132	581	23,6%
Ghana	3 818	4 159	4 248	4 927	17 152	4 284	4 083	4 494	4 844	17 705	3,2%
Guinea	389	350	361	408	1 508	370	338	391	440	1 539	2,1%
Guinea-Bissau	35	21	37	34	127	51	46	29	26	152	19,7%
Liberia	150	186	154	219	709	165	182	173	175	695	-2,0%
Mali	312	321	314	342	1 289	436	366	364	406	1 572	22,0%
Mauritania	32	37	78	43	190	39	104	28	77	248	30,5%
Niger	66	87	72	75	300	89	95	58	86	328	9,3%
Nigeria	16 247	16 826	17 036	15 490	65 599	13 235	12 371	12 705	12 610	50 921	-22,4%
Saint Helena	65	15	47	68	195	38	65	72	68	243	24,6%
Senegal	546	676	545	696	2 463	639	628	590	752	2 609	5,9%
Sierra Leone	155	168	198	233	754	201	131	163	200	695	-7,8%
Togo	108	122	105	126	461	134	170	130	119	553	20,0%
North Africa	4 002	4 215	4 152	4 361	16 730	4 479	3 860	3 885	4 223	16 447	-1,7%
Algeria	308	333	472	378	1 491	278	248	364	312	1 202	-19,4%
Egypt	2 220	2 187	2 095	2 186	8 688	2 384	2 016	1 813	2 287	8 500	-2,2%
Libya	155	160	216	280	811	243	249	235	229	956	17,9%
Morocco	395	424	364	510	1 693	458	375	415	435	1 683	-0,6%
South Sudan	178	207	147	208	740	201	205	195	231	832	12,4%
The Sudan	465	561	632	524	2 182	603	455	573	476	2 107	-3,4%
Tunisia	276	338	220	273	1 107	307	306	286	247	1 146	3,5%
Western Sahara	5	5	6	2	18	5	6	4	6	21	16,7%
Unspecified	2 523	2 924	2 894	3 264	11 605	2 772	3 059	3 352	3 539	12 722	9,6%

5. Explanatory notes

NOTICE TO USERS

Statistics South Africa (Stats SA) has made changes in the *Tourism and Migration* statistical release starting from the January 2014 statistics. This change has become necessary as a result of the implementation of the enhanced Movement Control System (e-MCS) at the country's ports of entry. Currently the new system (e-MCS) is operational at over 95% of the country's ports of entry. The change affects the identification of Transit Travellers that are currently categorised under Direction instead of Purpose of Movement. With this revision, Table 1 and Table 2 in the release now include a category for Transit while all tables reporting on tourists exclude transit travellers.

5.1 Introduction

Legal movements across South African borders as well as legal immigration into South Africa fall under the jurisdiction of the Department of Home Affairs (DHA). Stats SA then processes, analyses and publishes this information.

Administrative data sources from the DHA, that is, information from all the country's ports of entry and applications for permanent residence, constitute the only comprehensive source of information on foreign arrivals and departures, documented immigrants and emigrants. The information from this source of data provides the best national coverage (both in terms of space and time) of the population movements of South African residents and foreign travellers. The data can be used for the following:

- To estimate, monitor and understand salient characteristics of foreign travellers and volumes of South African residents travelling outside South Africa.
- To provide information that can be used to (a) assess the extent of government's progress in strengthening bilateral political and economic relations by assessing the number of international tourist arrivals; and (b) benchmark surveys focusing on demand for local tourism services by foreign travellers.

5.2 Purpose of the statistical release

This release reports on arrivals, departures and transit travellers of South African residents and foreign travellers. Detailed information on the age and sex distribution; mode of travel; national and regional distribution; and purpose of travel of overnight visitors or tourists are also provided.

5.3 Scope and coverage

The release covers data collected by DHA officials on travellers who entered the Republic of South Africa (RSA).

5.4 Data

Information published in this release is based on data obtained from the following data sources within the DHA:

- Data routinely collected by immigration officers at all road, air and sea entry ports on all travellers (South African residents and foreign travellers) arriving into or departing from South Africa are captured into the DHA's population Movement Control System (MCS). The counts/statistics relate to the number of individual movements, rather than to the number of people. Hence, the multiple movements of individual people during the calendar month are each counted separately. Generally, the data are collected directly from travel documents either by scanning or capturing onto the ports' electronic database. No forms or cards are used (except in rare occasions when the capturing system is down) to collect information from travellers. Individual ports regularly transmit data onto the national database at the head office of the DHA.
- Stats SA receives downloaded data covering a particular calendar month from the DHA.
- As part of data interrogation, data from O.R. Tambo International Airport, which has the highest volume of travellers, are compared with passenger statistics from the Airport Company of South Africa (ACSA). As expected, in any specific month, an increase in the volume of passengers reported by ACSA is also reflected

in an increase in the volume of travellers recorded by DHA. A similar pattern has also been observed when the volume of travellers decreased. In December 2017, the DHA data was 1,8% higher than that of ACSA.

5.5 Limitations

The information on the total number of arrivals and departures of South African residents is collected from the scanning of passports. However, data are not collected from passengers on country visited; country of final destination, the duration of stay; intended duration of stay and purpose of visit. With this limitation, it is impossible to identify the number of tourists from the data on South African residents.

5.6 Definition of terms

5.6.1 Definitions used by the United Nations World Tourism Organisation (UNWTO)

Traveller is someone who moves between different geographical locations for any purpose and any duration.

Visitor refers to any person travelling to a place other than that of his/her usual environment for less than 12 months and whose main purpose of the trip is other than the exercise of an activity remunerated from within the place visited.

Same-day visitor is a visitor who visits a place for less than one night.

Tourist (overnight visitor) is a visitor who stays at least one night in collective or private accommodation in the place visited.

Tourism comprises the activities of persons travelling to, and staying in places outside their usual environment, for not more than one consecutive year, for leisure, business and other purposes. The usual environment of a person consists of a certain area around his/her place of residence, plus all other places he/she frequently visits.

5.6.2 Definitions used specifically in this release

South African resident refers to either a South African citizen or a non-South African citizen with a South African permanent residence permit.

Foreign traveller refers to a traveller who is not a South African citizen or permanent resident.

Region refers to the following country classification:

- Overseas: Europe, North America, Central and South America, Australasia, the Middle East and Asia.
- Africa: SADC and 'other' African countries (East and Central Africa, West Africa and North Africa).

Country refers to individual countries within a region. The country of residence is used. The country of residence should not be confused with the country from which the visitor travelled.

Africa refers to all the countries in Africa (both mainland and island countries).

SADC refers to the fourteen countries, excluding South Africa, which belong to the Southern African Development Community.

'Other' African refers to all non-SADC African countries.

Overseas refers to all countries outside Africa.

Trip refers to the arrival and departure of a visitor in a specified month.

5.7 Symbols used

- = nil

< = less than

5.8 Rounding off

Percentages may not add up to 100 due to rounding.

6. General information

Stats SA publishes approximately 300 different statistical releases each year. It is not economically viable to produce them in more than one of South Africa's eleven official languages, since the releases are used extensively, not only locally but also by international economic and social-scientific communities. Stats SA releases are published in English.

Stats SA has copyright on this publication. Users may apply the information as they wish, provided that they acknowledge Stats SA as the source of the basic data wherever they process, apply, utilise, publish or distribute the data; and also that they specify that the relevant application and analysis (where applicable) result from their own processing of the data.

Advance release calendar

An advance release calendar is disseminated at www.statssa.gov.za

Stats SA products

A complete set of Stats SA publications is available at the Stats SA Library and the following libraries:

National Library of South Africa, Pretoria Division
National Library of South Africa, Cape Town Division
Natal Society Library, Pietermaritzburg
Library of Parliament, Cape Town
Bloemfontein Public Library
Johannesburg Public Library
Eastern Cape Library Services, King William's Town
Central Regional Library, Polokwane
Central Reference Library, Mbombela
Central Reference Collection, Kimberley
Central Reference Library, Mafikeng

Stats SA also provides a subscription service.

Electronic services

A large range of data is available via online services, CD and computer printouts. For more details about our electronic data, contact user information services.

You can visit us on the Internet at www.statssa.gov.za

Enquiries

Telephone: (012) 310 8600 (user information services)
(012) 406 3301 (technical enquiries)
(012) 310 8251 (orders)
(012) 310 4883/4885/8018 (library)

Fax: (012) 310 8500/ 8495 (user information services)
(012) 310 6937 (technical enquiries)

Email: RamadimetjaM@statssa.gov.za (technical enquiries)
info@statssa.gov.za (user information services)

Postal address: Private Bag X44, Pretoria, 0001

Produced by Stats SA