



**Statistics
South Africa**

Preferred supplier of quality statistics



Statistical release

P0351

Tourism and Migration

December 2009

**Embargoed until:
25 February 2010
09:00**

Enquiries:

User Information Services
Tel.: (012) 310 8600 / 4892 / 8390

Forthcoming issue:

January 2010

Expected release date

29 March 2010

Statistics South Africa • Mbalo-mbalo dza Afrika Tshipembe • Tinhlayo-tiko ta Afrika-Dzonga • Dipalopalo tsa Aforika Borwa • Ezezibalo zaseNingizimu Afrika
Dipalopalo tša Afrika Borwa • Dipalopalo tsa Afrika Borwa • Ubalo lwaseMzantsi Afrika • Telubalo eNingizimu Afrika • iNanimbalo leSewula Afrika • Statistiek Suid-Afrika

NOTICE

Statistics South Africa (Stats SA) has completed its Duration of Stay exercise as part of improving its information on foreign travellers and measurement of foreign tourists. As a result of this exercise, it is now possible to remove SAME DAY visitors and OVERNIGHT visitors (tourists) from the foreign arrivals data it receives from the Department of Home Affairs. This is based on the date on which the arrivals that entered the country for purposes other than work left. Stats SA started publishing information on TOURISTS as defined by United Nations World Tourism Organisation with the January 2009 data. In this month’s release, additional data (graphs and tables) are provided in the APPENDIX for the benefit of users who would like to continue using foreign arrivals (rather than tourists) as the base denominator for comparison and trend analysis purposes.

Contents

KEY FINDINGS

Page

1. Travellers

1.1 Number of travellers	2
1.2 Mode of travel of travellers	2

2. Tourists

2.1 Mode of travel of tourists	2
2.2 Regional and national distribution of tourists.....	2
2.3 Purpose of visit of tourists.....	3
2.4 Sex and age distribution of tourists.....	3

Figures

1. Number of tourists from eight leading overseas countries in December 2009	4
2. Number of tourists from eight leading SADC countries in December 2009	4
3. Number of tourists from eight leading ‘other’ African countries in December 2009	5
4. Number of tourists from January to December, 2009	5

Tables

1. Number of South African residents and foreign travellers by travel direction.....	6
2. Number of South African residents and foreign travellers by travel direction and mode of travel, December 2009 ...	7
3. Number of tourists by country of residence and mode of travel, December 2009	8
4. Number of tourists by country of residence and purpose of visit, December 2009.....	12
5. Number of tourists from overseas, SADC and ‘other’ African regions by sex and age group, December 2009.....	16

EXPLANATORY NOTES

1. Introduction	17
2. Purpose of the statistical release	17
3. Scope and coverage.....	17
4. Data	17
5. Limitations	18
6. Definition of terms.....	18
7. Symbols and abbreviations used	18

GENERAL INFORMATION.....	19
---------------------------------	-----------

APPENDIX	20
-----------------------	-----------

KEY FINDINGS

1. Travellers

1.1 Number of travellers

The routine data collected by the Department of Home Affairs' (DHA) immigration officers at the ports of entry into South Africa show that a total of 2 810 599 travellers (arrivals and departures) passed through South African ports of entry in December 2009. As presented in Table 1, these travellers are made up of 1 022 544 South African residents and 1 788 055 foreign travellers. A further breakdown of the figures indicates that there were 450 320 and 572 224 South African resident arrivals and departures respectively. The corresponding volumes for foreign arrivals and departures were 940 836 and 847 219 respectively. A comparison between the movements in November 2009 and December 2009 indicates that there was an increase in all movements. Thus, there was an increase of 35,5% from 332 355 in November 2009 to 450 320 in December 2009 for South African arrivals and an increase of 77,5% from 322 358 in November 2009 to 572 224 in December 2009 for their South African departures. Foreign arrivals increased by 8,8% from 864 808 in November 2009 to 940 836 in December 2009. A comparison between movements in December 2008 and December 2009 indicates that there was a decline in all movements. Thus, foreign arrivals declined by 3,5% from 974 975 in December 2008 to 940 836 in December 2009. Detailed information on the departure of travellers is not available in the movement data. Data on the purpose of travel and the number of days South African travellers intend to spend or spent abroad are not collected by South African immigration officers. Hence, it is not possible to categorise them as tourists and non tourists. However, data are available on foreign arrivals for this categorisation. In December 2009, 27 728 (3,0%) foreign arrivals were classified as non-visitors while 913 108 (97,0%) were visitors. The visitors were categorised into three groups: arrivals only comprising of visitors who entered the country in December but did not depart in December (338 236); visitors who came in once and left (371 047); and those who came and left more than once in December (203 825). Visitors were further grouped as same day visitors 240 246 (26,3%) and overnight visitors / tourists 672 862 (73,7%).

1.2 Mode of travel of travellers

Travellers who cross South Africa's borders rarely use trains and ships since they are mainly used for transporting goods. Data presented in Table 2 show that in December 2009, road transport was the most common mode of travel used by 1 980 859 (70,5%) out of the 2 810 599 travellers. The number of travellers who used air transport was 808 712 (28,8%). The arrival data on South African residents show that 162 845 (36,2%) came by air and 285 885 (63,5%) by road. For their departure, 184 603 (32,3%) and 387 072 (67,6%) used air and road transport respectively. In the case of foreign travellers, 249 532 (26,5%) arrived by air. Those who came by road were 673 748 (71,6%). When departing South Africa, 211 732 (25,0%) foreign travellers left by air whilst 634 154 (74,9%) left by road. As shown in Table 2 an overwhelming majority, 222 480 (92,6%) of same day visitors arrived in the country by road. Only 17 367 (7,2%) same-day visitors flew into the country. However, data on overnight visitors (tourists) show that, 447 640 (66,5%) used road transport whereas 224 532 (33,4%) came by air.

2. Tourists

2.1 Mode of travel of tourists

The country of residence of tourists is used to categorise them into their respective regions and countries. Information on the specific region and country of residence of the tourists and the mode of travel used to enter South Africa is provided in Table 3. In December 2009, a high proportion of overseas tourists arrived in the country by air 178 397 (91,1%) compared with those who came in by road 17 087 (8,7%). This is in contrast to tourists from SADC countries who came into South Africa predominantly by road 426 949 (92,7%) compared with 33 001 (7,2%) coming by air. A relatively high proportion 11 415 (83,3%) of tourists from 'other' African countries flew into the country but 2 261 (16,5%) used road transport.

2.2 Regional and national distribution of tourists

In December 2009, overseas tourists came mainly from Europe, 132 266 (67,6%); followed by North America, 27 623 (14,1%); Asia, 15 568 (8,0%); Australasia, 11 089 (5,7%); Central and South America, 6 650 (3,4%); and Middle East, 2 543 (1,3%). Virtually all tourists from Africa came from the SADC countries, 460 350 (97,1%). The distribution of the remaining tourists from Africa is as follows: East and Central Africa, 7 314 (1,5%); West Africa, 5 626 (1,2%) and North Africa 768 (0,2%).

Data presented in Figure 1 indicate that UK, 52 222 (26,7%); USA, 22 584 (11,5%); Germany, 20 807 (10,6%); The Netherlands, 11 744 (6,0%); Australia, 8 875 (4,5%); France, 8 285 (4,2%); Sweden, 6 056 (3,1%); and Italy, 5 422 (2,8%); were the eight leading overseas source countries. Tourists from these eight countries constitute 69,5% of all tourists from overseas countries.

The eight leading source countries from SADC (see Figure 2) were: Zimbabwe, 127 091 (27,6%); Lesotho, 98 917 (21,5%); Mozambique, 67 381 (14,6%); Botswana, 55 297 (12,0%); Swaziland, 54 849 (11,9%); Namibia, 23 453 (5,1%); Zambia, 14 789 (3,2%) and Malawi, 8 726 (1,9%). Tourists from these eight countries constitute 97,9% of all tourists from SADC countries. The eight leading source countries from 'other' African countries, shown in Figure 3, were: Nigeria, 3 741 (27,3%); Kenya, 2 718 (19,8%); Uganda, 1 201 (8,8%); Ghana, 1 042 (7,6%); Ethiopia, 847 (6,2%); Gabon, 676 (4,9); Congo, 550 (4,0%); and Cameroon, 364 (2,7%). Tourists from these eight countries constitute 81,3% of all tourists from 'other' African countries.

Figure 4 shows that, the volume of tourists was low in February, March and June, whilst December recorded the highest volume of tourists.

2.3 Purpose of visit of tourists

As observed from data given in Table 4, in December 2009, an overwhelming majority (98,1%) of tourists were in South Africa for holidays. This is a large difference compared with those who have come to study (0,6%) and those on business (1,0%). A detailed analysis reveals that all the overseas regions had at least 94,0% of their tourists coming to South Africa for holidays. Tourists from Australasia (99,2%), Europe (98,7%), North America (98,6%), Central and South America (97,4), Middle East (95,0%), and Asia (94,7%) were in South Africa for holidays. Tourists from Middle East and Asia were more diverse in their purpose. Middle East and Asia had 3,5% and 3,9% respectively of their tourists in South Africa for business. Furthermore, students made up 1,3% and 0,9% of Middle East and Asia tourists respectively.

Although the majority (98,2%) of African tourists came to South Africa for holidays, there is a difference between tourists from SADC countries and those from 'other' African countries, namely:

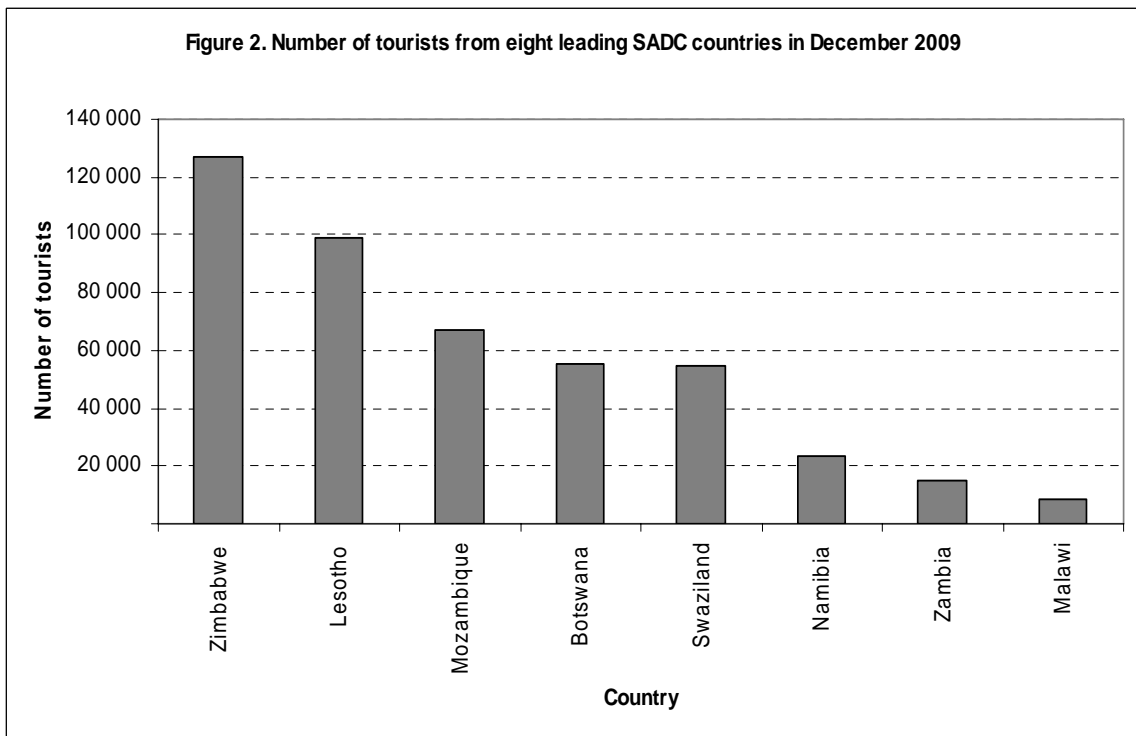
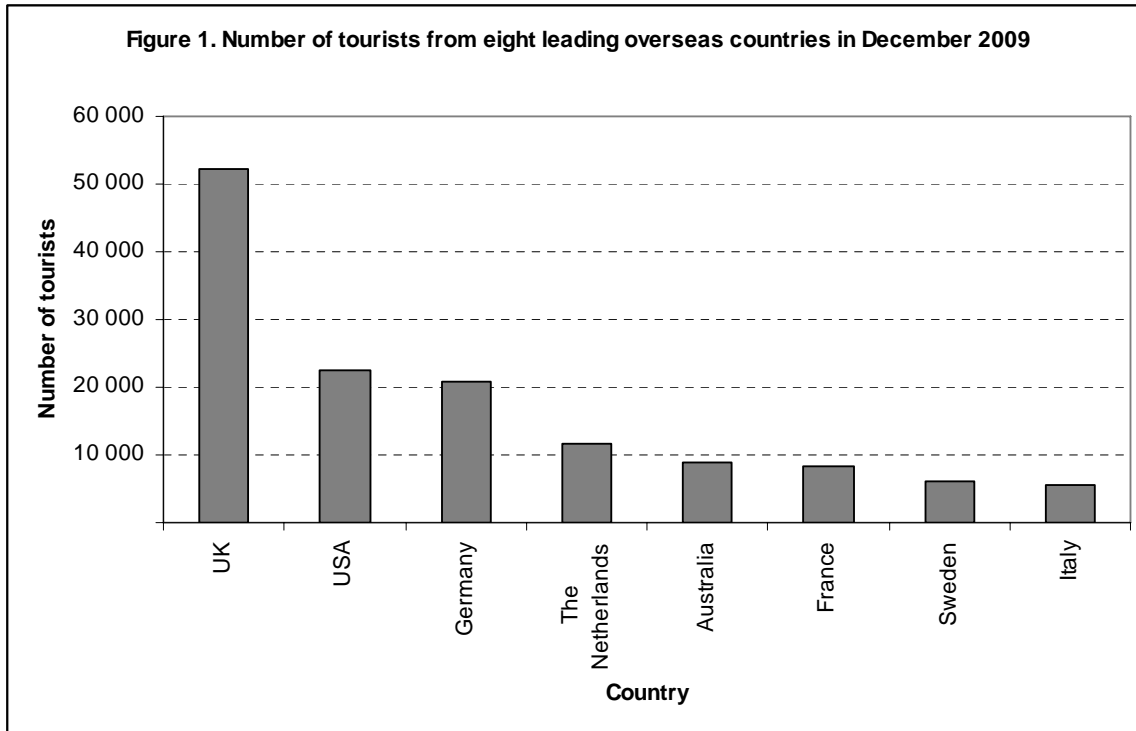
- Whereas 98,2% of tourists from the SADC countries were on holidays; 95,0% of tourists from 'other' African countries were on holidays. Proportionally, the lowest percentage (87,6%) of tourists on holidays came from North Africa, a region from where a relatively large percentage (9,8%) of tourists came for business.
- Overall, North Africa, East and Central Africa and West Africa had 9,8%, 2,6% and 1,7% respectively of their tourists in South Africa for business compared with only 0,9% of business persons among the tourists from SADC countries.
- Similarly, 2,3%; 2,1% and 1,8% of tourists from; East and Central Africa; North Africa and West Africa respectively were students compared with only 0,6% among tourists from SADC countries.

2.4 Sex and age distribution of tourists

According to Table 5, in December 2009, there were 346 344 (51,5%) male and 325 624 (48,4%) female tourists in South Africa. The overseas tourists were made up of 104 043 (53,2%) male tourists and 91 448 (46,7%) female tourists. Tourists from 'other' African countries had a high proportion (60,3%) of males compared with that of SADC (50,5%). The proportions of female tourists from 'other' African countries and SADC countries were 39,7% and 49,4% respectively.

The age of the tourists were categorised into three broad groups, namely those younger than 15 years, those aged between 15 and 64 years, and persons aged 65 years and older. The overall results presented in Table 5 show that 85,8% of tourists were aged between 15 and 64 years; 10,3% aged less than 15 years and 3,8% aged 65 years and older. Taking the country of residence into consideration, the results further show that 80,5% of overseas tourists were aged between 15 and 64 years. However, 88,1% and 85,3% of tourists from SADC and 'other' African countries respectively were in the age group 15-64 years. There were very few tourists younger than 15 years and those aged 65 years and older. The data show relatively high proportions of overseas tourists for both males (7,6%) and females (7,9%) who were older persons (i.e. 65 years and older). This is in contrast to tourists from SADC countries which comprised of 1,9% males and 2,5% females and tourists from 'other' African countries which were made up of 1,7% males and 2,1% females aged 65 years and older.

P J Lehohla
Statistician-General



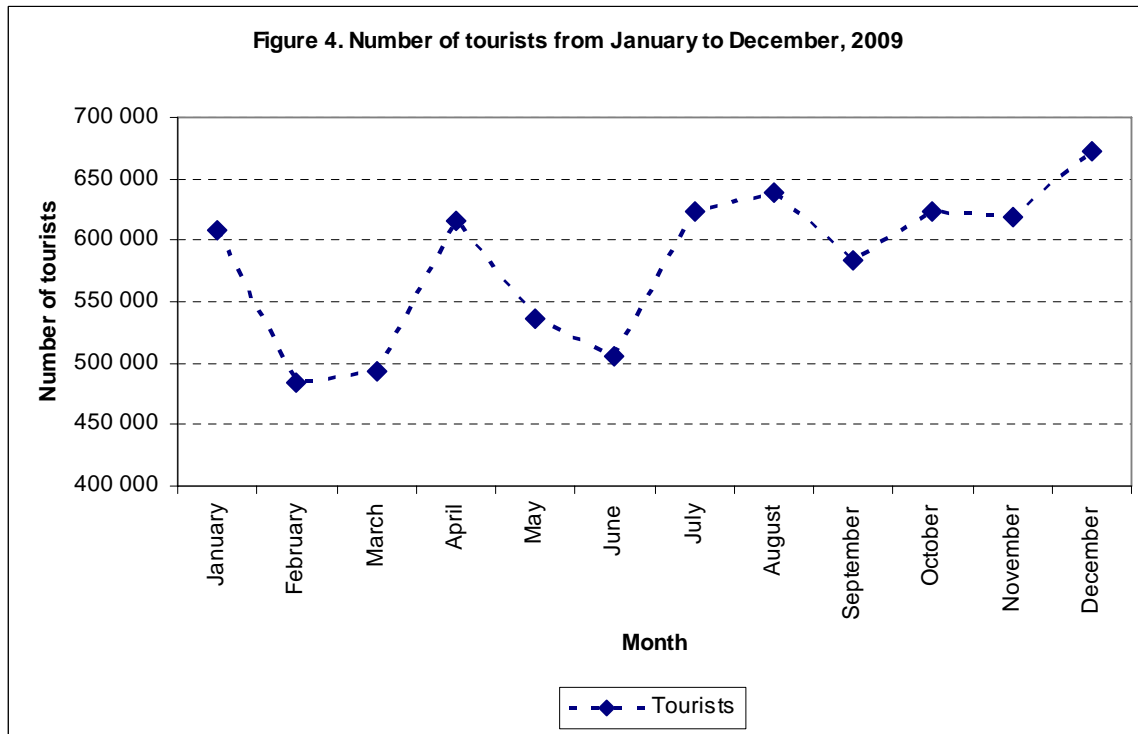
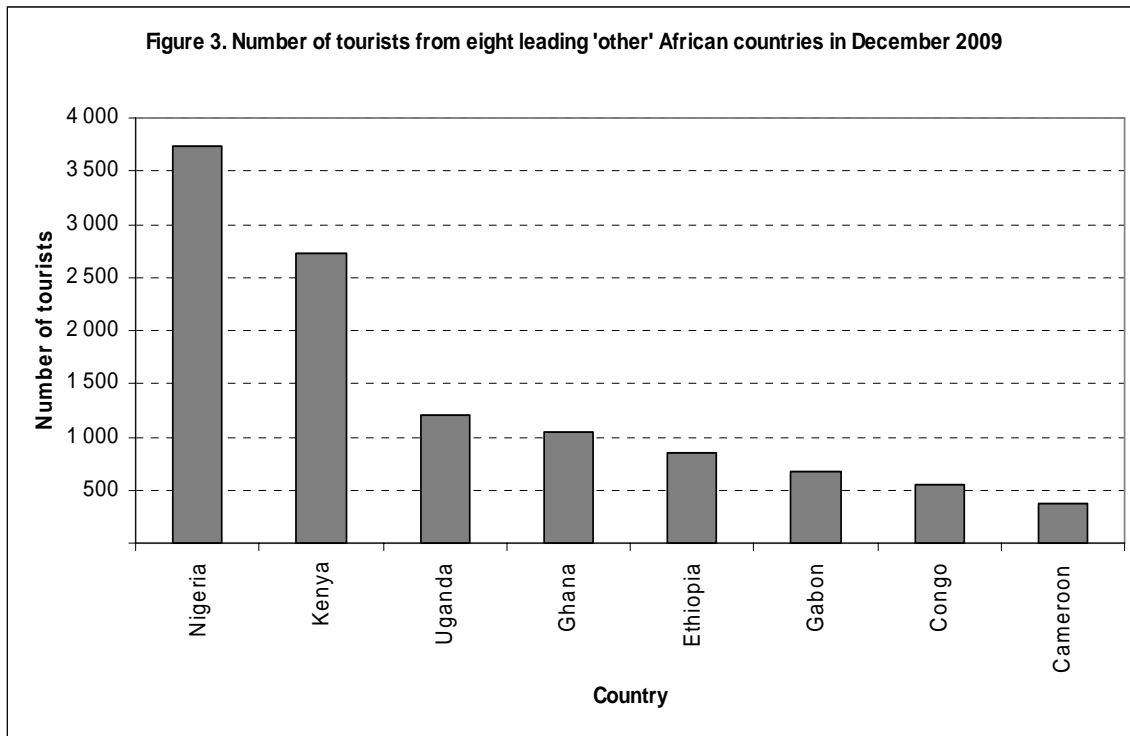


Table 1. Number of South African residents and foreign travellers by travel direction, December 2009

Travel direction	December	November	December	% change	
	2008	2009	2009	December 08 – December 09	November 09 – December 09
Grand Total	2 941 454	2 272 937	2 810 599	-4,4	23,7
South African residents	1 054 315	654 713	1 022 544	-3,0	56,2
Arrivals	460 659	332 355	450 320	-2,2	35,5
Departures	593 656	322 358	572 224	-3,6	77,5
Foreign travellers	1 887 139	1 618 224	1 788 055	-5,3	10,5
Arrivals	974 975	864 808	940 836	-3,5	8,8
Departures	912 164	753 416	847 219	-7,1	12,5
Foreign Arrivals		864 808	940 836		8,8
Non visitors		30 754	27 728		-9,8
Visitors		834 054	913 108		9,5
Visitors		834 054	913 108		9,5
Arrivals only		276 085	338 236		22,5
Single trips		352 659	371 047		5,2
Multiple trips		205 310	203 825		-0,7
Visitors		834 054	913 108		9,5
Same day		214 789	240 246		11,9
Overnight (tourists)		619 265	672 862		8,7

Table 2. Number of South African residents and foreign travellers by travel direction and mode of travel, December 2009

Travel direction	Total	Mode of travel								
		Air					Rail	Road	Sea	Unspecified
		Cape Town	Durban	OR Tambo	Other	TOTAL				
Grand Total	2 810 599	146 665	18 680	637 552	5 815	808 712	1 773	1 980 859	315	18 940
South African residents	1 022 544	41 843	12 643	288 798	4 164	347 448	356	672 957	131	1 652
Arrivals	450 320	20 145	5 772	134 690	2 238	162 845	175	285 885	95	1 320
Departures	572 224	21 698	6 871	154 108	1 926	184 603	181	387 072	36	332
Foreign travellers	1 788 055	104 822	6 037	348 754	1 651	461 264	1 417	1 307 902	184	17 288
Arrivals	940 836	58 851	3 728	186 102	851	249 532	692	673 748	113	16 751
Departures	847 219	45 971	2 309	162 652	800	211 732	725	634 154	71	537
Visitors	913 108	57 950	3 561	179 696	692	241 899	112	670 120	109	868
Same day	240 246	633	6	16 627	101	17 367	1	222 480	6	392
Overnight (Tourists)	672 862	57 317	3 555	163 069	591	224 532	111	447 640	103	476

Table 3. Number of tourists by country of residence and mode of travel, December 2009

Country	Mode of travel									
	Grand Total	Air					Rail	Road	Sea	Unspecified
		Cape Town	Durban	OR Tambo	Other	TOTAL				
Grand Total	672 862	57 317	3 555	163 069	591	224 532	111	447 640	103	476
Overseas	195 739	54 791	3 253	119 991	362	178 397	79	17 087	56	120
Europe	132 266	46 728	2 504	71 027	182	120 441	59	11 672	37	57
Austria	2 001	802	28	1 022	-	1 852	-	149	-	-
Belgium	3 304	973	2	1 909	20	2 904	-	398	-	2
Denmark	1 964	515	16	1 253	2	1 786	3	175	-	-
France	8 285	1 675	154	5 595	19	7 443	5	821	1	15
Germany	20 807	8 689	203	9 749	7	18 648	-	2 150	7	2
Ireland	3 530	1 340	82	1 822	-	3 244	1	283	-	2
Italy	5 422	1 622	239	3 274	4	5 139	-	282	-	1
Norway	1 809	587	8	1 045	-	1 640	1	166	2	-
Portugal	2 967	328	13	1 757	10	2 108	-	858	-	1
Spain	1 648	332	1	1 109	1	1 443	1	195	-	9
Sweden	6 056	2 295	7	3 108	2	5 412	-	633	4	7
Switzerland	3 589	1 096	69	2 076	7	3 248	1	340	-	-
The Netherlands	11 744	3 861	68	5 773	9	9 711	-	2 024	4	5
UK	52 222	20 447	1 488	27 534	83	49 552	47	2 608	3	12
Other	6 918	2 166	126	4 001	18	6 311	-	590	16	1
North America	27 623	3 724	154	21 534	105	25 517	4	2 055	7	40
Canada	5 036	1 112	47	3 489	11	4 659	3	370	1	3
USA	22 584	2 612	107	18 043	94	20 856	1	1 684	6	37
Other	3	-	-	2	-	2	-	1	-	-
Central and South America	6 650	542	11	5 699	12	6 264	-	381	2	3
Argentina	1 090	250	3	812	-	1 065	-	25	-	-
Brazil	3 894	75	5	3 616	9	3 705	-	187	2	-
Mexico	315	44	1	258	3	306	-	8	-	1
Other	1 351	173	2	1 013	-	1 188	-	161	-	2
Australasia	11 089	1 269	180	8 914	22	10 385	-	698	2	4
Australia	8 875	1 019	117	7 184	20	8 340	-	530	1	4

Table 3. Number of tourists by country of residence and mode of travel, December 2009 (continued)

Country	Mode of travel									
	Grand Total	Air					Rail	Road	Sea	Unspecified
		Cape Town	Durban	OR Tambo	Other	TOTAL				
New Zealand	2 135	243	62	1 678	2	1 985	-	149	1	-
Other	79	7	1	52	-	60	-	19	-	-
Middle East	2 543	352	36	2 038	3	2 429	-	114	-	-
Cyprus	226	21	11	180	-	212	-	14	-	-
Iran	280	69	2	199	-	270	-	10	-	-
Israel	1 356	70	-	1 231	3	1 304	-	52	-	-
Other	681	192	23	428	-	643	-	38	-	-
Asia	15 568	2 176	368	10 779	38	13 361	16	2 167	8	16
China	2 778	301	2	2 286	1	2 590	-	183	4	1
Hong Kong	560	76	2	473	2	553	-	7	-	-
India	3 665	297	167	2 499	8	2 971	-	688	1	5
Japan	2 231	182	11	1 973	3	2 169	-	62	-	-
Korea	1 421	207	3	1 042	2	1 254	-	161	-	6
Malaysia	749	260	11	454	2	727	-	22	-	-
Pakistan	803	72	50	384	-	506	15	282	-	-
Singapore	793	363	2	413	5	783	-	10	-	-
Taiwan	719	96	6	353	3	458	-	259	2	-
Other	1 849	322	114	902	12	1 350	1	493	1	4
Africa	474 058	2 419	298	41 494	205	44 416	32	429 210	47	353
SADC	460 350	2 257	282	30 284	178	33 001	23	426 949	39	338
Angola	3 202	405	5	2 608	22	3 040	-	162	-	-
Botswana	55 297	17	-	1 698	37	1 752	-	53 535	7	3
DRC	3 776	3	1	2 854	7	2 865	-	907	-	4
Lesotho	98 917	4	-	318	2	324	-	98 327	1	265
Madagascar	301	2	-	273	-	275	-	26	-	-
Malawi	8 726	5	-	1 844	7	1 856	4	6 858	2	6
Mauritius	1 331	257	202	725	-	1 184	-	147	-	-
Mozambique	67 381	104	59	1 860	10	2 033	3	65 301	-	44
Namibia	23 453	1 383	-	1 824	7	3 214	2	20 237	-	-
Swaziland	54 849	1	3	410	1	415	8	54 426	-	-

Table 3. Number of tourists by country of residence and mode of travel, December 2009 (continued)

Country	Mode of travel									
	Grand Total	Air					Rail	Road	Sea	Unspecified
		Cape Town	Durban	OR Tambo	Other	TOTAL				
Tanzania	1 237	3	4	809	-	816	1	412	5	3
Zambia	14 789	8	-	5 671	27	5 706	1	9 075	2	5
Zimbabwe	127 091	65	8	9 390	58	9 521	4	117 536	22	8
'Other' African	13 708	162	16	11 210	27	11 415	9	2 261	8	15
East and Central Africa	7 314	56	2	5 851	13	5 922	6	1 375	2	9
Burundi	56	-	-	46	-	46	-	10	-	-
Cameroon	364	2	-	335	1	338	-	26	-	-
Central African Republic	18	1	-	16	-	17	-	1	-	-
Chad	23	1	-	18	-	19	-	3	-	1
Comoros	7	-	-	6	-	6	-	1	-	-
Congo	550	7	1	421	1	430	-	120	-	-
Djibouti	5	-	-	3	-	3	-	2	-	-
Equat Guinea	19	-	-	8	-	8	-	11	-	-
Eritrea	51	-	-	38	-	38	-	13	-	-
Ethiopia	847	5	-	467	2	474	3	366	-	4
Gabon	676	4	-	661	2	667	-	9	-	-
Kenya	2 718	10	1	2 411	3	2 425	1	291	-	1
Reunion	36	14	-	21	-	35	-	1	-	-
Rwanda	196	-	-	172	-	172	-	21	-	3
Sao Tome and Principe	23	5	-	17	1	23	-	-	-	-
Seychelles	194	3	-	190	-	193	-	1	-	-
Somalia	329	1	-	7	-	8	1	320	-	-
Tristan Da Cunha	1	1	-	-	-	1	-	-	-	-
Uganda	1 201	2	-	1 014	3	1 019	1	179	2	-
West Africa	5 626	47	4	4 757	10	4 818	3	799	5	1
Ascension	3	-	-	1	-	1	-	2	-	-
Benin	82	-	-	74	-	74	-	8	-	-
Burkina Faso	28	1	-	26	-	27	-	1	-	-
Cape Verde Island	43	3	-	34	-	37	-	5	-	1
Cote D'Ivoire	144	2	1	134	-	137	-	7	-	-
Gambia	31	3	-	24	-	27	-	4	-	-

Table 3. Number of tourists by country of residence and mode of travel, December 2009 (concluded)

Country	Mode of travel									
	Grand Total	Air					Rail	Road	Sea	Unspecified
		Cape Town	Durban	OR Tambo	Other	TOTAL				
Ghana	1 042	3	-	931	4	938	-	102	2	-
Guinea	105	-	-	42	-	42	-	63	-	-
Guinea-Bissau	24	1	-	7	-	8	-	16	-	-
Liberia	34	-	-	28	-	28	-	6	-	-
Madeira Islands	4	-	1	1	-	2	-	2	-	-
Mali	61	-	-	44	-	44	-	17	-	-
Mauritania	11	-	1	10	-	11	-	-	-	-
Niger	12	-	-	9	-	9	-	3	-	-
Nigeria	3 741	30	1	3 181	4	3 216	3	519	3	-
Saint Helena	8	2	-	5	-	7	-	1	-	-
Senegal	158	1	-	147	2	150	-	8	-	-
Sierra Leone	71	1	-	37	-	38	-	33	-	-
Togo	24	-	-	22	-	22	-	2	-	-
North Africa	768	59	10	602	4	675		87	1	5
Algeria	89	14	-	54	-	68	-	21	-	-
Egypt	302	15	3	272	-	290	-	11	1	-
Libya	87	6	-	46	4	56	-	31	-	-
Morocco	64	2	2	51	-	55	-	8	-	1
The Sudan	148	13	1	119	-	133	-	11	-	4
Tunisia	77	9	4	59	-	72	-	5	-	-
Western Sahara	1	-	-	1	-	1	-	-	-	-
Unspecified	3 065	107	4	1 584	24	1 719	-	1 343	-	3

Table 4. Number of tourists by country of residence and purpose of visit, December 2009

Country	Grand Total	Business	Holiday	Study	Transit
Grand Total	672 862	6 883	660 296	4 321	1 362
Overseas	195 739	2 347	192 345	698	349
Europe	132 266	1 260	130 491	391	124
Austria	2 001	20	1 977	3	1
Belgium	3 304	28	3 261	12	3
Denmark	1 964	14	1 943	5	2
France	8 285	116	8 131	33	5
Germany	20 807	234	20 462	100	11
Ireland	3 530	22	3 497	8	3
Italy	5 422	36	5 379	6	1
Norway	1 809	12	1 773	16	8
Portugal	2 967	16	2 925	5	21
Spain	1 648	18	1 623	4	3
Sweden	6 056	43	5 994	18	1
Switzerland	3 589	22	3 554	11	2
The Netherlands	11 744	83	11 610	47	4
UK	52 222	455	51 635	92	40
Other	6 918	141	6 727	31	19
North America	27 623	259	27 223	91	50
Canada	5 036	38	4 982	13	3
USA	22 584	221	22 238	78	47
Other	3	-	3	-	-
Central and South America	6 650	67	6 478	29	76
Argentina	1 090	18	1 066	1	5
Brazil	3 894	10	3 815	9	60
Mexico	315	11	302	1	1
Other	1 351	28	1 295	18	10
Australasia	11 089	63	10 996	14	16
Australia	8 875	56	8 799	9	11

Table 4. Number of tourists by country of residence and purpose of visit, December 2009 (continued)

Country	Grand Total	Business	Holiday	Study	Transit
New Zealand	2 135	7	2 120	3	5
Other	79	-	77	2	-
Middle East	2 543	89	2 416	34	4
Cyprus	226	1	222	3	-
Iran	280	8	264	8	-
Israel	1 356	26	1 317	9	4
Other	681	54	613	14	
Asia	15 568	609	14 741	139	79
China	2 778	176	2 577	21	4
Hong Kong	560	7	553	-	-
India	3 665	201	3 421	26	17
Japan	2 231	54	2 167	7	3
Korea	1 421	34	1 331	36	20
Malaysia	749	6	736	7	-
Pakistan	803	36	758	8	1
Singapore	793	8	782	-	3
Taiwan	719	11	694	11	3
Other	1 849	76	1 722	23	28
Africa	474 058	4 452	465 648	2 951	1 007
SADC	460 350	4 091	452 630	2 667	962
Angola	3 202	37	3 036	107	22
Botswana	55 297	24	54 463	693	117
DRC	3 776	63	3 570	128	15
Lesotho	98 917	36	98 162	271	448
Madagascar	301	3	289	2	7
Malawi	8 726	174	8 504	37	11
Mauritius	1 331	5	1 314	9	3
Mozambique	67 381	338	66 924	78	41
Namibia	23 453	1 444	21 694	256	59
Swaziland	54 849	156	54 209	426	58

Table 4. Number of tourists by country of residence and purpose of visit, December 2009 (continued)

Country	Grand Total	Business	Holiday	Study	Transit
Tanzania	1 237	48	1 166	21	2
Zambia	14 789	771	13 968	46	4
Zimbabwe	127 091	992	125 331	593	175
'Other' African	13 708	361	13 018	284	45
East and Central Africa	7 314	191	6 933	166	24
Burundi	56	6	50	-	-
Cameroon	364	15	326	22	1
Central African Republic	18	5	13	-	-
Chad	23	3	20	-	-
Comoros	7	-	7	-	-
Congo	550	10	517	23	-
Djibouti	5	1	4	-	-
Equat Guinea	19	-	18	1	-
Eritrea	51	1	47	3	-
Ethiopia	847	14	819	14	-
Gabon	676	1	635	40	-
Kenya	2 718	92	2 577	40	9
Reunion	36	-	36	-	-
Rwanda	196	6	180	9	1
Sao Tome and Principe	23	1	19	-	3
Seychelles	194	-	193	1	-
Somalia	329	-	329	-	-
Tristan Da Cunha	1	-	1	-	-
Uganda	1 201	36	1 142	13	10
West Africa	5 626	95	5 412	102	17
Ascension	3	-	3	-	-
Benin	82	-	80	1	1
Burkina Faso	28	5	23	-	-
Cape Verde Island	43	-	42	1	-
Cote D'Ivoire	144	5	135	4	-
Gambia	31	-	30	1	-

Table 4. Number of tourists by country of residence and purpose of visit, December 2009 (concluded)

Country	Grand Total	Business	Holiday	Study	Transit
Ghana	1 042	17	1 008	14	3
Guinea	105	-	98	5	2
Guinea-Bissau	24	1	23	-	-
Liberia	34	-	34	-	-
Madeira Islands	4	-	4	-	-
Mali	61	-	56	-	5
Mauritania	11	-	11	-	-
Niger	12	1	11	-	-
Nigeria	3 741	53	3 611	76	1
Saint Helena	8	-	8	-	-
Senegal	158	10	144	-	4
Sierra Leone	71	2	69	-	-
Togo	24	1	22	-	1
North Africa	768	75	673	16	4
Algeria	89	13	69	3	4
Egypt	302	28	272	2	-
Libya	87	4	78	5	-
Morocco	64	10	53	1	-
The Sudan	148	10	133	5	-
Tunisia	77	9	68	-	-
Western Sahara	1	1	-	-	-
Unspecified	3 065	84	2 303	672	6

Table 5. Number of tourists from overseas, SADC and 'other' African regions by sex and age group, December 2009

Sex	Age group	Total	Region			
			Overseas	SADC	'other' African	Unspecified
All	Total	672 862	195 739	460 350	13 708	3 065
	< 15	69 262	22 887	44 270	1 759	346
	15-64	577 634	157 639	405 668	11 688	2 639
	65+	25 634	15 174	10 122	260	78
	Unspecified	332	39	290	1	2
Males	Total	346 344	104 043	232 386	8 264	1 651
	< 15	34 564	11 830	21 687	851	196
	15-64	299 186	84 328	206 190	7 269	1 399
	65+	12 452	7 870	4 384	143	55
	Unspecified	142	15	125	1	1
Females	Total	325 624	91 448	227 320	5 442	1 414
	< 15	34 698	11 057	22 583	908	150
	15-64	277 693	73 112	198 924	4 417	1 240
	65+	13 090	7 260	5 690	117	23
	Unspecified	143	19	123	-	1
Unspecified	Total	894	248	644	2	-
	< 15	-	-	-	-	-
	15-64	755	199	554	2	-
	65+	92	44	48	-	-
	Unspecified	47	5	42	-	-

EXPLANATORY NOTES

1. Introduction

Legal movements across South African borders as well as legal immigration into South Africa fall under the jurisdiction of the DHA. Stats SA then processes and publishes this information.

Administrative data sources from the DHA, that is, information from all the country's ports of entry and applications for permanent residence constitute the only comprehensive source of information on foreign arrivals and departures, documented immigrants and emigrants. The information from this source of data provides the best national coverage (both in terms of space and time) of the population movements of South African residents and foreign travellers. The data:

- can be used to estimate, monitor and understand salient characteristics of foreign travellers and volumes of South African residents travelling outside South Africa;
- provide information that can be used to (a) assess the extent of government's progress in strengthening bilateral political and economic relations by assessing the number of international tourist arrivals; and (b) benchmark surveys focusing on demand for local tourism services by foreign travellers.

The information on documented migrants provides crucial information on receiving countries of South African emigrants which could be targeted in initiatives geared towards attracting back migrants into the country. In addition, the data on permanent residents are valuable in assessing not only the demographic and economic profiles of immigrants but also their contribution to national social and economic programmes.

2. Purpose of the statistical release

This release reports on arrivals and departures of foreign and South African travellers. Detailed information on the gender and age structure; mode of travel; national and regional distribution; and purpose of travel of overnight visitors or tourists are provided.

3. Scope and coverage

This release covers all the data as received from the DHA. The arrivals of foreign travellers are more detailed than departures as they are reported by mode of travel, gender, age and purpose of visit whereas statistics on South African residents are reported by mode of travel. Statistics on documented migration, i.e. self-declared emigrants and documented immigrants, are currently not reported due to the unavailability of data from the DHA.

4. Data

Information published in this release is based on data obtained from the following data sources within the DHA.

- Data routinely collected by immigration officers at all land, air and sea entry ports on all travellers (South African residents and foreign travellers) arriving into or departing from South Africa are captured into the DHA's population Movement Control System (MCS). The counts / statistics relate to the number of individual movements, rather than to the number of people. Hence, the multiple movements of individual people during the calendar month are each counted separately. Generally the data are collected directly from travel documents either by scanning or capturing onto the port's electronic database. No forms or cards are used (except in rare occasions when the capturing system is down) to collect information from travellers. Individual ports regularly transmit data onto the national database at the head office of the DHA.
- Statistics South Africa (Stats SA) downloads the data covering a particular calendar month from the mainframe of the State Information Technology Agency (SITA), where the DHA stores its data.
- As part of data interrogation, data from the OR Tambo International Airport, which has the highest volume of travellers, are compared with passenger statistics from the Airport Company of South Africa (ACSA). As expected, in any specific month, an increase in the volume of passengers reported by ACSA has been accompanied by an increase in the volume of travellers recorded by DHA. A similar pattern was also observed when the volume of travellers decreased. However, the volume of passengers recorded by ACSA is higher than that of the DHA because of, among other reasons, travellers who are in transit and those who boarded airplanes but refused entry into the country. In December 2009, the DHA data was 16,5% lower than that of ACSA.

5. Limitations

The information on the total number of arrivals and departures of South African residents is collected from the scanning of passports. However, data are not collected from passengers on country visited; country of final destination, the duration of stay; intended duration of stay and purpose of visit. With this limitation, it is impossible to identify the number of tourists from the data on South African residents.

Due to unavailability of data from the DHA, information on documented immigrants is not included in this current publication. The documented immigration information will be provided as soon as it is made available to Stats SA.

6. Definitions of terms

6.1 Definitions used by the United Nations World Tourism Organisation (UNWTO)

Traveller is someone who moves between different geographical locations for any purpose and any duration.

Visitor refers to any person travelling to a place other than that of his/her usual environment for less than 12 months and whose main purpose of the trip is other than the exercise of an activity remunerated from within the place visited.

Same-day visitor is a visitor who visits a place for less than one night.

Tourist (overnight visitor) is a visitor who stays at least one night in collective or private accommodation in the place visited.

Tourism comprises the activities of persons travelling to, and staying in places outside their usual environment, for not more than one consecutive year, for leisure, business and other purposes. The usual environment of a person consists of a certain area around his/her place of residence, plus all other places he/she frequently visits.

6.2 Definitions used specifically in this report

South African resident: refers to either a South African citizen or a non-South African citizen with a South African permanent residence permit.

Foreign traveller: refers to a traveller who is not a South African citizen or permanent resident.

Region: refers to the following country classification: Overseas: Europe, North America, Central and South America, Australasia, the Middle East, Asia. Africa: SADC, East and Central Africa, West Africa and North Africa.

Country: refers to individual countries within a region. The country of residence is used. The country of residence should not be confused with the country from which the visitor travelled.

Africa: refers to all the countries in Africa (both mainland and island countries).

SADC: refers to the thirteen countries, excluding South Africa, that belong to the Southern African Development Community.

'Other' African: refers to all non SADC African countries.

Overseas: refers to all countries outside Africa

Trip: refers to the arrival and departure of a visitor in a specified month

7. Symbols and abbreviations used

= nil

Unspec. = unspecified

General information

Stats SA publishes approximately 300 different statistical releases each year. It is not economically viable to produce them in more than one of South Africa's eleven official languages. Since the releases are used extensively, not only locally but also by international economic and social-scientific communities, Stats SA releases are published in English.

Stats SA has copyright on this publication. Users December apply the information as they wish, provided that they acknowledge Stats SA as the source of the basic data wherever they process, apply, utilise, publish or distribute the data; and also that they specify that the relevant application and analysis (where applicable) result from their own processing of the data.

Advance release calendar

An advance release calendar is disseminated on www.statssa.gov.za

Stats SA products

A complete set of Stats SA publications is available at the Stats SA Library and the following libraries:

National Library of South Africa, Pretoria Division
National Library of South Africa, Cape Town Division
Natal Society Library, PieterApritzburg
Library of Parliament, Cape Town
Bloemfontein Public Library
Johannesburg Public Library
Eastern Cape Library Services, King William's Town
Central Regional Library, Polokwane
Central Reference Library, Nelspruit
Central Reference Collection, Kimberley
Central Reference Library, Mafikeng

Stats SA also provides a subscription service.

Electronic services

A large range of data are available via on-line services, diskette and computer printouts. For more details about our electronic data, contact user information services.

You can visit us on the Internet at: www.statssa.gov.za

Enquiries

Telephone: (012) 310 8600/ 8390/ 8351/ 4892/ 8496/ 8095 (user information services)
(012) 310 8692 (technical enquiries)
(012) 310 8161 (orders)
(012) 310 4883/4885/8018 (library)

Fax: (012) 310 8500/ 8495 (user information services)
(012) 310 6937 (technical enquiries)

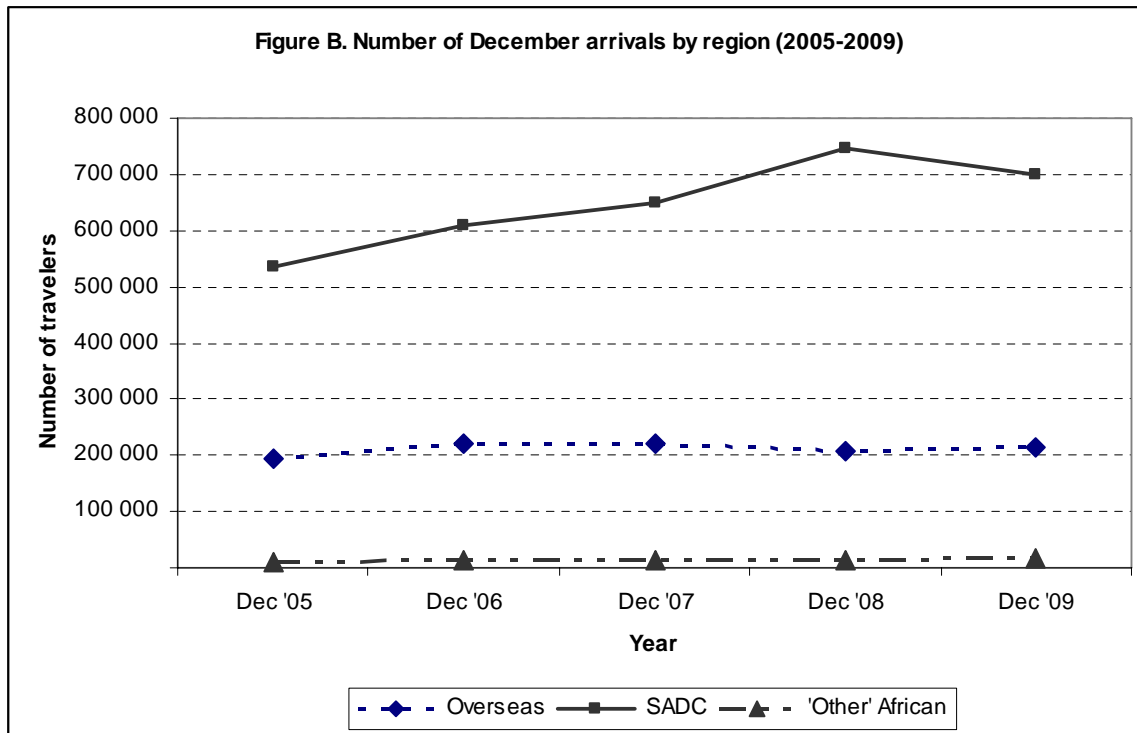
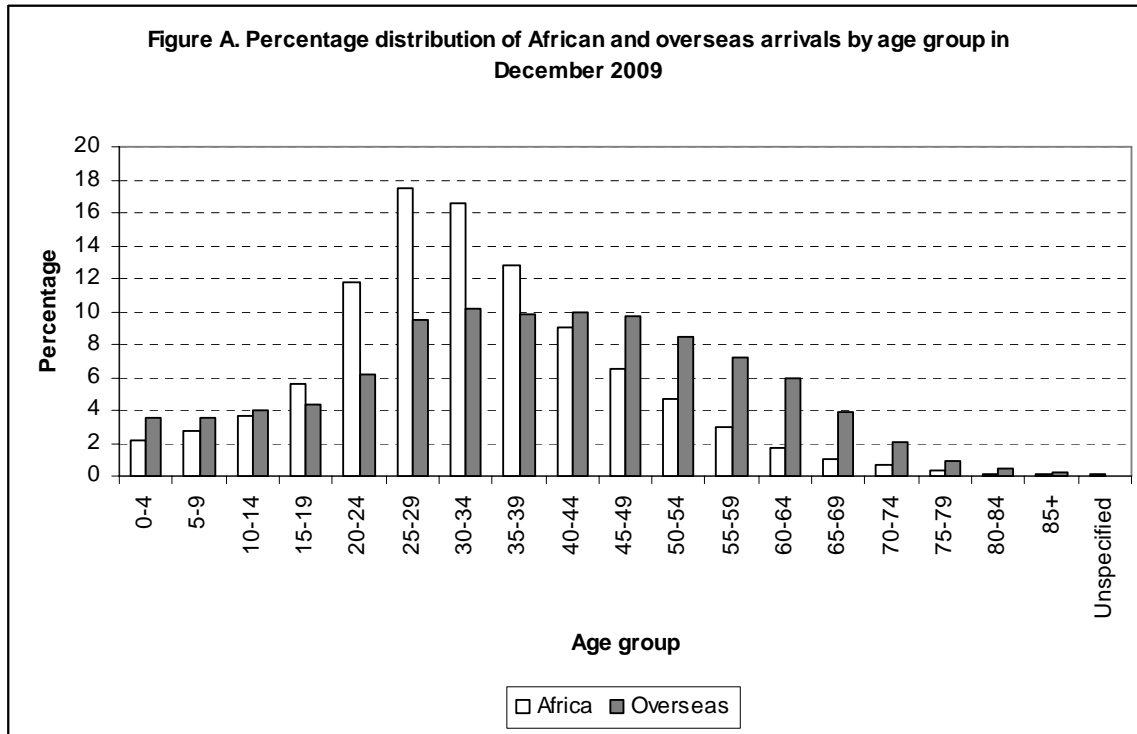
Email: tshwarog@statssa.gov.za (technical enquiries)
info@statssa.gov.za (user information services)
distribution@statssa.gov.za (orders)

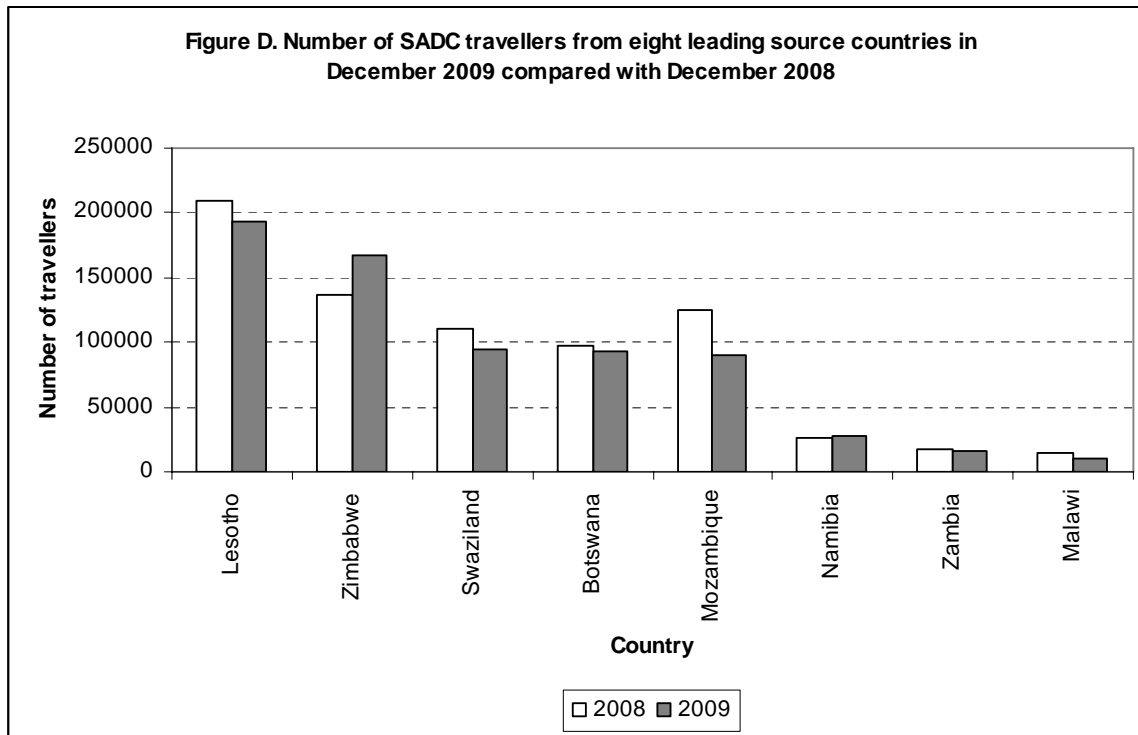
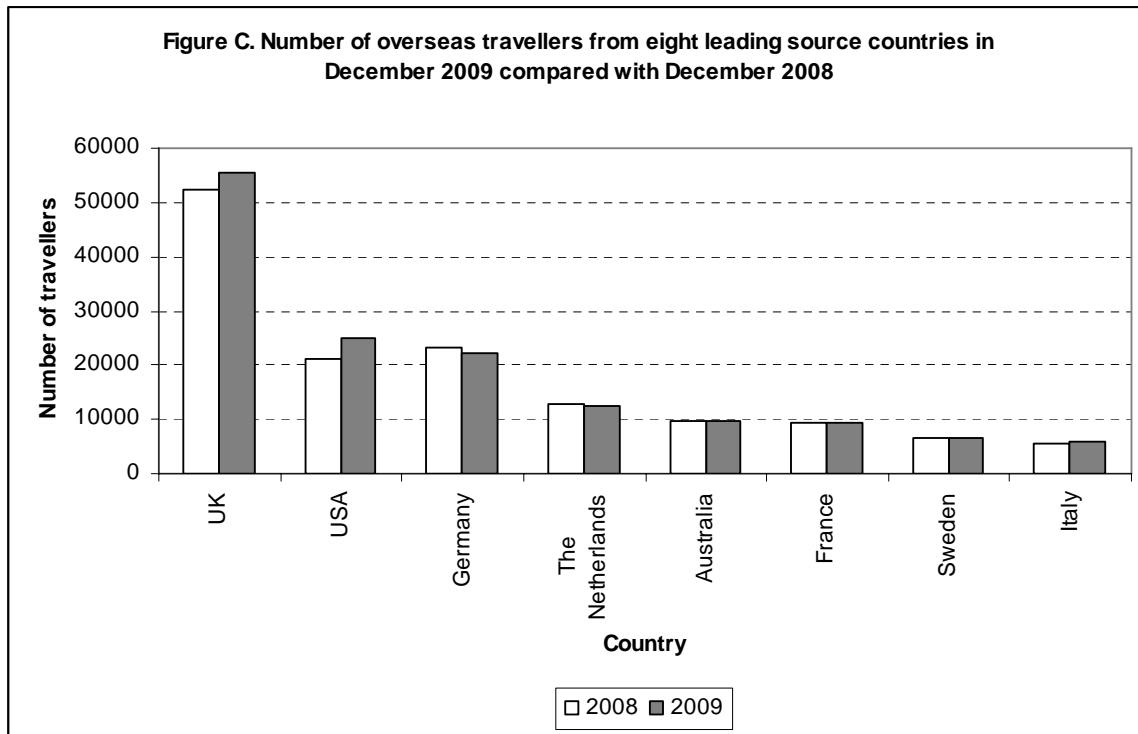
Postal address: Private Bag X44, Pretoria, 0001

Produced by Stats SA

APPENDIX

DECEMBER 2009 GRAPHS AND TABLES BASED ON FOREIGN ARRIVALS





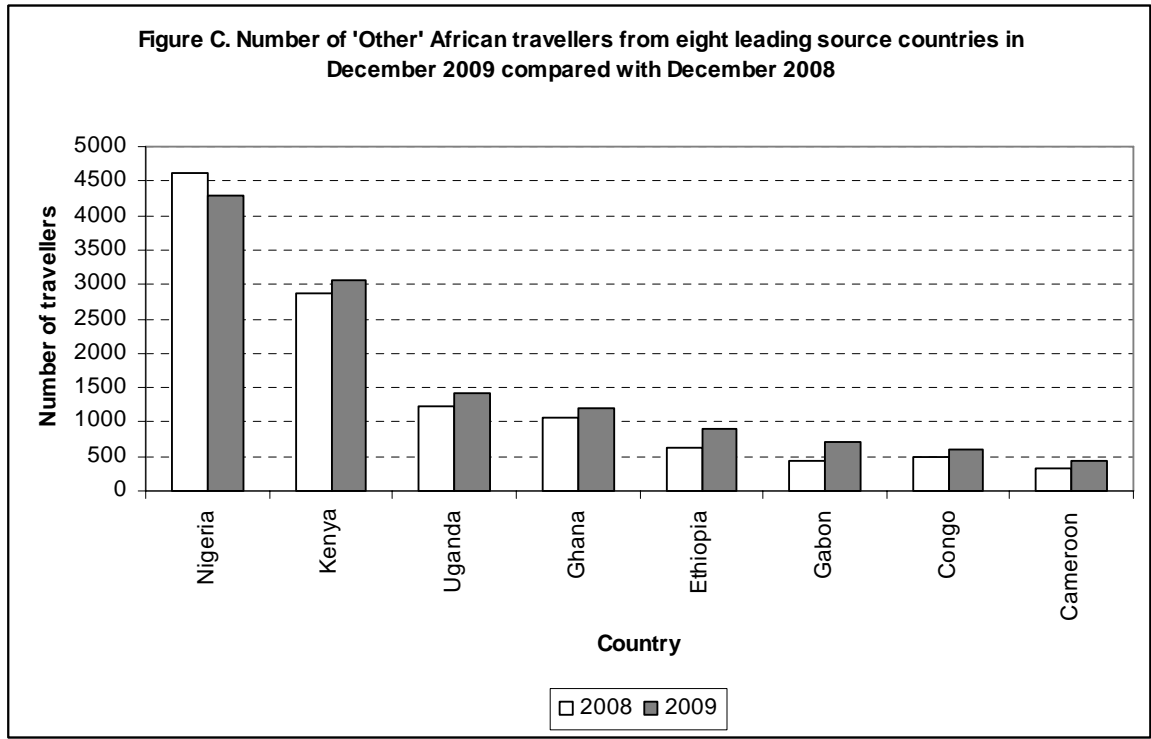


Table A. Number of South African residents and foreign travellers by travel direction

Travel direction	December	November	December	% change	
	2008	2009	2009	December 08 – December 09	November 09 – December 09
Grand Total	2 941 454	2 272 937	2 810 599	-4,4	23,7
South African residents	1 054 315	654 713	1 022 544	-3,0	56,2
Arrivals	460 659	332 355	450 320	-2,2	35,5
Departures	593 656	322 358	572 224	-3,6	77,5
Foreign travellers	1 887 139	1 618 224	1 788 055	-5,3	10,5
Arrivals	974 975	864 808	940 836	-3,5	8,8
Departures	912 164	753 416	847 219	-7,1	12,5

Table B. Number of South African residents and foreign travellers by travel direction and mode of travel

Travel direction	Total	Mode of travel (December 2009)								
		Air					Rail	Road	Sea	Unspecified
		(Cape Town)	(Durban)	(OR Tambo)	(Other)	Total				
Grand Total	2 810 599	146 665	18 680	637 552	5 815	808 712	1 773	1 980 859	315	18 940
South African residents	1 022 544	41 843	12 643	288 798	4 164	347 448	356	672 957	131	1 652
Arrivals	450 320	20 145	5 772	134 690	2 238	162 845	175	285 885	95	1 320
Departures	572 224	21 698	6 871	154 108	1 926	184 603	181	387 072	36	332
Foreign travellers	1 788 055	104 822	6 037	348 754	1 651	461 264	1 417	1 307 902	184	17 288
Arrivals	940 836	58 851	3 728	186 102	851	249 532	692	673 748	113	16 751
Departures	847 219	45 971	2 309	162 652	800	211 732	725	634 154	71	537

Table C. Number of foreign arrivals by country and mode of travel

Country	December		Mode of travel (December 2009)								
	2008	2009	Air					Rail	Road	Sea	Unspecified
			Cape Town	Durban	OR Tambo	Other	Total				
Grand Total	974 975	940 836	58 851	3 728	186 102	851	249 532	692	673 748	113	16 751
Overseas	207 562	215 537	56 193	3 415	133 376	486	193 470	613	21 034	62	358
Europe	143 228	142 951	47 646	2 544	78 461	241	128 892	296	13 628	38	97
Austria	2 044	2 091	808	28	1 099	2	1 937	-	154	-	-
Belgium	3 888	3 581	998	2	2 104	20	3 124	2	450	-	5
Denmark	2 225	2 176	545	16	1 379	2	1 942	25	209	-	-
France	9 499	9 383	1 713	156	6 527	23	8 419	27	920	1	16
Germany	23 345	22 046	8 809	206	10 546	9	19 570	23	2 439	7	7
Ireland	4 399	3 793	1 352	82	2 013	4	3 451	1	338	-	3
Italy	5 471	5 917	1 647	239	3 671	4	5 561	1	354	-	1
Norway	2 064	1 926	598	8	1 133	-	1 739	5	179	2	1
Portugal	3 502	3 745	336	13	2 173	12	2 534	-	1 207	-	4
Spain	1 894	1 982	344	1	1 399	1	1 745	1	227	-	9
Sweden	6 654	6 420	2 306	7	3 372	2	5 687	4	713	4	12
Switzerland	3 664	3 815	1 113	69	2 245	7	3 434	1	380	-	-
The Netherlands	12 707	12 361	3 899	71	6 185	14	10 169	2	2 178	4	8
UK	52 441	55 476	20 727	1 493	29 967	103	52 290	69	3 089	3	25
Other	9 431	8 239	2 451	153	4 648	38	7 290	135	791	17	6
North America	26 631	30 527	3 816	166	23 724	115	27 821	10	2 630	8	58
Canada	5 596	5 569	1 123	47	3 893	13	5 076	3	480	1	9
USA	21 026	24 955	2 693	119	19 829	102	22 743	7	2 149	7	49
Other	9	3	-	-	2	-	2	-	1	-	-
Central and South America	5 675	7 543	568	11	6 440	13	7 032	4	498	2	7
Argentina	619	1 358	256	3	1 061	-	1 320	1	36	-	1
Brazil	3 554	4 330	78	5	3 995	9	4 087	1	239	2	1
Mexico	289	347	49	1	279	3	332	2	12	-	1
Other	1 213	1 508	185	2	1 105	1	1 293	-	211	-	4
Australasia	12 327	12 129	1 283	180	9 816	34	11 313	4	804	2	6
Australia	9 871	9 710	1 030	117	7 919	31	9 097	-	606	1	6

Table C. Number of foreign arrivals by country and mode of travel (continued)

Country	December		Mode of travel (December 2009)								
	2008	2009	Air					Rail	Road	Sea	Unspecified
			Cape Town	Durban	OR Tambo	Other	Total				
New Zealand	2 381	2 324	246	62	1 834	3	2 145	4	174	1	-
Other	75	95	7	1	63	-	71	-	24	-	-
Middle East	3 182	2 836	359	37	2 273	8	2 677	2	154	-	3
Cyprus	250	243	21	11	196	-	228	-	15	-	-
Iran	296	293	69	2	209	-	280	-	13	-	-
Israel	1 421	1 559	76	-	1 407	7	1 490	1	67	-	1
Other	1 215	741	193	24	461	1	679	1	59	-	2
Asia	16 519	19 551	2 521	477	12 662	75	15 735	297	3 320	12	187
China	2 833	3 538	372	8	2 710	25	3 115	56	310	4	53
India	3 865	4 726	344	217	3 020	10	3 591	44	1 037	1	53
Japan	1 632	2 555	188	11	2 251	3	2 453	10	92	-	-
Korea	1 274	1 525	216	3	1 112	2	1 333	-	182	-	10
Malaysia	861	823	278	11	496	2	787	2	34	-	-
Pakistan	650	1 019	83	63	455	-	601	18	393	-	7
Philippines	750	811	133	36	393	7	569	103	106	5	28
Singapore	1 035	849	364	2	465	5	836	1	12	-	-
Taiwan	764	1 085	119	12	392	6	529	11	526	2	17
Other	2 855	2 620	424	114	1 368	15	1 921	52	628	-	19
Africa	761 064	716 521	2 516	309	49 479	288	52 592	79	650 497	51	13 302
SADC	746 629	700 975	2 337	292	37 207	237	40 073	59	647 584	43	13 216
Angola	3 321	3 458	420	6	2 816	32	3 274	-	184	-	-
Botswana	97 095	92 380	23	-	3 101	58	3 182	-	89 138	7	53
DRC	3 286	3 935	5	2	2 976	7	2 990	1	939	-	5
Lesotho	209 461	192 641	5	4	491	2	502	-	179 343	1	12 795
Madagascar	337	332	3	-	298	-	301	2	29	-	-
Malawi	14 721	9 518	7	-	2 097	7	2 111	4	7 393	2	8
Mauritius	1 482	1 510	259	203	817	1	1 280	-	220	-	10
Mozambique	125 079	90 114	108	61	2 521	11	2 701	4	87 231	-	178
Namibia	26 852	27 711	1 418	-	2 352	11	3 781	32	23 893	-	5
Swaziland	109 751	95 160	3	3	651	3	660	9	94 391	-	100

Table C. Number of foreign arrivals by country and mode of travel (continued)

Country	December		Mode of travel (December 2009)								
	2008	2009	Air					Rail	Road	Sea	Unspecified
			Cape Town	Durban	OR Tambo	Other	Total				
Tanzania	1 383	1 402	4	4	883	-	891	1	499	5	6
Zambia	17 838	16 212	8	-	6 360	27	6 395	1	9 802	2	12
Zimbabwe	136 023	166 602	74	9	11 844	78	12 005	5	154 522	26	44
East and Central Africa	6 954	8 152	61	2	6 314	20	6 397	10	1 700	2	43
Burundi	85	61	-	-	49	-	49	-	12	-	-
Cameroon	327	435	3	-	393	1	397	-	38	-	-
Central African Republic	8	18	1	-	16	-	17	-	1	-	-
Chad	24	25	1	-	20	-	21	-	3	-	1
Comoros	11	7	-	-	6	-	6	-	1	-	-
Congo	496	603	7	1	443	1	452	-	147	-	4
Djibouti	9	7	-	-	3	-	3	-	4	-	-
Equat Guinea	36	35	-	-	21	-	21	-	14	-	-
Eritrea	46	57	-	-	41	-	41	-	16	-	-
Ethiopia	622	912	5	-	494	2	501	3	399	-	9
Gabon	449	701	4	-	681	5	690	1	10	-	-
Kenya	2 870	3 057	13	1	2 614	6	2 634	3	410	-	10
Reunion	86	39	14	-	24	-	38	-	1	-	-
Rwanda	271	222	-	-	193	-	193	-	26	-	3
Sao Tome and Principe	14	26	5	-	20	1	26	-	-	-	-
Seychelles	209	207	3	-	202	-	205	-	2	-	-
Somalia	148	331	1	-	9	-	10	1	320	-	-
Tristan Da Cunha	1	1	1	-	-	-	1	-	-	-	-
Uganda	1 242	1 408	3	-	1 085	4	1 092	2	296	2	16
West Africa	6 673	6 468	56	4	5 260	19	5 339	9	1 087	5	28
Ascension	6	5	-	-	1	-	1	-	4	-	-
Benin	104	89	-	-	81	-	81	-	8	-	-
Burkina Faso	34	31	1	-	29	-	30	-	1	-	-
Canary Isles	1	-	-	-	-	-	-	-	-	-	-
Cape Verde Island	65	52	4	-	38	-	42	2	7	-	1
Cote D'Ivoire	166	164	2	1	154	-	157	-	7	-	-
Gambia	64	35	3	-	28	-	31	-	4	-	-

Table C. Number of foreign arrivals by country and mode of travel (concluded)

Country	December		Mode of travel (December 2009)								
	2008	2009	Air					Rail	Road	Sea	Unspecified
			Cape Town	Durban	OR Tambo	Other	Total				
Ghana	1 059	1 205	3	-	1 021	9	1 033	-	165	2	5
Guinea	134	133	-	-	65	-	65	-	68	-	-
Guinea-Bissau	16	26	1	-	8	-	9	-	17	-	-
Liberia	54	39	-	-	31	-	31	-	8	-	-
Madeira Islands	10	4	-	1	1	-	2	-	2	-	-
Mali	74	66	-	-	48	-	48	-	18	-	-
Mauritania	7	13	-	1	12	-	13	-	-	-	-
Niger	10	12	-	-	9	-	9	-	3	-	-
Nigeria	4 616	4 284	38	1	3 492	8	3 539	7	714	3	21
Saint Helena	14	10	2	-	5	-	7	-	3	-	-
Senegal	145	185	1	-	172	2	175	-	10	-	-
Sierra Leone	52	89	1	-	41	-	42	-	46	-	1
Togo	42	26	-	-	24	-	24	-	2	-	-
North Africa	808	926	62	11	698	12	783	1	126	1	15
Algeria	136	113	14	1	63	-	78	-	35	-	-
Egypt	371	348	16	3	314	-	333	1	12	1	1
Libya	56	135	6	-	70	11	87	-	40	-	8
Morocco	49	68	2	2	54	1	59	-	8	-	1
The Sudan	129	169	14	1	123	-	138	-	26	-	5
Tunisia	63	91	10	4	72	-	86	-	5	-	-
Western Sahara	4	2	-	-	2	-	2	-	-	-	-
Unspecified	6 349	8 778	142	4	3 247	77	3 470	-	2 217	-	3 091

Table D. Number of foreign arrivals by region and purpose of visit

Continent	Grand Total	Business	Holiday	Study	Work	Transit	Border traffic	Unspecified
Grand Total	940 836	7 344	897 634	5 629	11 846	2 501	15 879	3
Overseas	215 537	2 453	205 895	730	5 559	672	227	1
Europe	142 951	1 327	138 510	408	2 363	306	37	-
North America	30 527	269	29 587	99	461	96	15	-
Central and South America	7 543	68	7 225	29	129	89	3	-
Australasia	12 129	68	11 909	15	112	24	1	-
Middle East	2 836	92	2 632	34	63	12	3	-
Asia	19 551	629	16 032	145	2 431	145	168	1
Africa	716 521	4 804	689 177	4 097	4 057	1 821	12 564	1
SADC	700 975	4 426	675 237	3 788	3 272	1 758	12 493	1
East and Central Africa	8 152	199	7 363	188	338	30	34	-
West Africa	6 468	99	5 838	105	373	26	27	-
North Africa	926	80	739	16	74	7	10	-
Unspecified	8 778	87	2 562	802	2 230	8	3 088	1

Table E. Number of foreign arrivals by country and purpose of visit

Country	2008	2009	Business	Holiday	Study	Work	Transit	Unspecified	Border traffic
Grand Total	974 975	940 836	7 344	897 634	5 629	11 846	2 501	3	15 879
Overseas	207 562	215 537	2 453	205 895	730	5 559	672	1	227
Europe	143 228	142 951	1 327	138 510	408	2 363	306	-	37
Austria	2 044	2 091	20	2 055	3	12	1	-	-
Belgium	3 888	3 581	30	3 481	12	51	4	-	3
Denmark	2 225	2 176	15	2 077	7	69	8	-	-
France	9 499	9 383	119	8 966	34	248	16	-	-
Germany	23 345	22 046	239	21 329	104	345	24	-	5
Ireland	4 399	3 793	23	3 713	8	43	5	-	1
Italy	5 471	5 917	38	5 798	9	62	10	-	-
Norway	2 064	1 926	13	1 862	16	22	13	-	-
Portugal	3 502	3 745	19	3 657	5	25	36	-	3
Spain	1 894	1 982	21	1 918	4	30	9	-	-
Sweden	6 654	6 420	43	6 295	18	56	3	-	5
Switzerland	3 664	3 815	23	3 733	12	44	3	-	-
The Netherlands	12 707	12 361	86	12 096	48	117	11	-	3
UK	52 441	55 476	490	54 273	97	510	94	-	12
Other	9 431	8 239	148	7 257	31	729	69	-	5
North America	26 631	30 527	269	29 587	99	461	96	-	15
Canada	5 596	5 569	39	5 427	13	77	8	-	5
USA	21 026	24 955	230	24 157	86	384	88	-	10
Other	9	3	-	3	-	-	-	-	-
Central and South America	5 675	7 543	68	7 225	29	129	89	-	3
Argentina	619	1 358	18	1 314	1	12	12	-	1
Brazil	3 554	4 330	10	4 195	9	53	63	-	-
Mexico	289	347	11	321	1	13	1	-	-
Other	1 213	1 508	29	1 395	18	51	13	-	2
Australasia	12 327	12 129	68	11 909	15	112	24	-	1
Australia	9 871	9 710	61	9 545	10	74	19	-	1

Table E. Number of foreign arrivals by country and purpose of visit

Country	2008	2009	Business	Holiday	Study	Work	Transit	Unspecified	Border traffic
New Zealand	2 381	2 324	7	2 282	3	27	5	-	-
Other	75	95	-	82	2	11	-	-	-
Middle East	3 182	2 836	92	2 632	34	63	12	-	3
Cyprus	250	243	1	235	3	4	-	-	-
Iran	296	293	9	266	8	10	-	-	-
Israel	1 421	1 559	28	1 492	9	19	10	-	1
Other	1 215	741	54	639	14	30	2	-	2
Asia	16 519	19 551	629	16 032	145	2 431	145	1	168
China	2 833	3 538	184	2 757	21	514	10	-	52
India	3 865	4 726	211	3 772	29	630	37	1	46
Japan	1 632	2 555	55	2 379	7	111	3	-	-
Korea	1 274	1 525	34	1 358	38	71	21	-	3
Malaysia	861	823	6	775	8	20	14	-	-
Pakistan	650	1 019	36	858	8	106	4	-	7
Philippines	750	811	10	305	2	439	28	-	27
Singapore	1 035	849	8	826	-	11	4	-	-
Taiwan	764	1 085	11	778	11	265	3	-	17
Other	2 855	2 620	74	2 224	21	264	21	-	16
Africa	761 064	716 521	4 804	689 177	4 097	4 057	1 821	1	12 564
SADC	746 629	700 975	4 426	675 237	3 788	3 272	1 758	1	12 493
Angola	3 321	3 458	40	3 163	151	71	33	-	-
Botswana	97 095	92 380	32	90 664	1 135	226	274	-	49
DRC	3 286	3 935	63	3 616	130	109	16	-	1
Lesotho	209 461	192 641	78	178 944	507	180	720	-	12 212
Madagascar	337	332	3	296	2	23	8	-	-
Malawi	14 721	9 518	181	9 221	38	65	11	-	2
Mauritius	1 482	1 510	5	1 461	10	20	4	-	10
Mozambique	125 079	90 114	378	89 383	91	128	57	-	77
Namibia	26 852	27 711	1 540	25 564	290	66	247	-	4
Swaziland	109 751	95 160	167	93 905	626	231	130	1	100

Table E. Number of foreign arrivals by country and purpose of visit

Country	2008	2009	Business	Holiday	Study	Work	Transit	Unspecified	Border traffic
Tanzania	1 383	1 402	48	1 286	27	36	2	-	3
Zambia	17 838	16 212	784	15 238	52	112	20	-	6
Zimbabwe	136 023	166 602	1 107	162 496	729	2 005	236	-	29
East and Central Africa	6 954	8 152	199	7 363	188	338	30	-	34
Burundi	85	61	6	52	1	2	-	-	-
Cameroon	327	435	16	344	25	49	1	-	-
Central African Republic	8	18	5	13	-	-	-	-	-
Chad	24	25	3	21	-	1	-	-	-
Comoros	11	7	-	7	-	-	-	-	-
Congo	496	603	11	539	23	26	-	-	4
Djibouti	9	7	1	6	-	-	-	-	-
Equat Guinea	36	35	-	33	1	1	-	-	-
Eritrea	46	57	1	48	3	5	-	-	-
Ethiopia	622	912	14	836	15	42	-	-	5
Gabon	449	701	1	647	43	10	-	-	-
Kenya	2 870	3 057	97	2 749	52	139	11	-	9
Reunion	86	39	-	37	-	2	-	-	-
Rwanda	271	222	7	192	11	11	1	-	-
Sao Tome and Principe	14	26	1	19	-	3	3	-	-
Seychelles	209	207	-	204	1	1	1	-	-
Somalia	148	331	-	330	-	1	-	-	-
Tristan Da Cunha	1	1	-	1	-	-	-	-	-
Uganda	1 242	1 408	36	1 285	13	45	13	-	16
West Africa	6 673	6 468	99	5 838	105	373	26	-	27
Ascension	6	5	-	5	-	-	-	-	-
Benin	104	89	-	87	1	-	1	-	-
Burkina Faso	34	31	5	24	-	2	-	-	-
Canary Isles	1	-	-	-	-	-	-	-	-
Cape Verde Island	65	52	-	46	1	5	-	-	-
Cote D'Ivoire	166	164	5	142	4	13	-	-	-
Gambia	64	35	-	34	1	-	-	-	-

Table E. Number of foreign arrivals by country and purpose of visit

Country	2008	2009	Business	Holiday	Study	Work	Transit	Unspecified	Border traffic
Ghana	1 059	1 205	19	1 106	14	57	4	-	5
Guinea	134	133	-	111	5	15	2	-	-
Guinea-Bissau	16	26	1	24	-	1	-	-	-
Liberia	54	39	-	38	-	1	-	-	-
Madeira Islands	10	4	-	4	-	-	-	-	-
Mali	74	66	-	57	-	4	5	-	-
Mauritania	7	13	-	12	-	1	-	-	-
Niger	10	12	1	11	-	-	-	-	-
Nigeria	4 616	4 284	55	3 875	79	249	5	-	21
Saint Helena	14	10	-	10	-	-	-	-	-
Senegal	145	185	10	150	-	21	4	-	-
Sierra Leone	52	89	2	79	-	4	3	-	1
Togo	42	26	1	23	-	-	2	-	-
North Africa	808	926	80	739	16	74	7	-	10
Algeria	136	113	13	81	3	9	7	-	-
Egypt	371	348	28	277	2	40	-	-	1
Libya	56	135	7	103	5	12	-	-	8
Morocco	49	68	10	54	1	3	-	-	-
The Sudan	129	169	10	149	5	4	-	-	1
Tunisia	63	91	10	75	-	6	-	-	-
Western Sahara	4	2	2	-	-	-	-	-	-
Unspecified	6 349	8 778	87	2 562	802	2 230	8	1	3 088