



**Statistics
South Africa**

Preferred supplier of quality statistics



Statistical release

P0351

Tourism and Migration

August 2006

**Embargoed until:
05 December 2006
13:00**

Enquiries:

User Information Services
Tel.: (012) 310 8600 / 4892 / 8390

Forthcoming issue:

September 2006

Expected release date

19 December 2006

Statistics South Africa • Mbalom-balo ya Afrika Tshipembe • Tihlayo-tiko ta Afrika-Dzonga • Dipalopalo tsa Aforika Borwa • Ezezibalo zaseNingizimu Afrika
Dipalopalo tša Afrika Borwa • Dipalopalo tsa Afrika Borwa • Ubalo lwaseMzantsi Afrika • Telubalo eNingizimu Afrika • iNanimbalo leSewula Afrika • Statistiek Suid-Afrika

email: info@statssa.gov.za
www.statssa.gov.za

170 Andries Street • Private Bag X44, 0001 Pretoria, South Africa
Tel: +27(12) 310 8911, Fax: +27(12) 321 7381

Published by
 Statistics South Africa
 Private Bag X44
 Pretoria
 0001

© Copyright, 2006

Users may apply or process this data, provided Statistics South Africa is acknowledged as the original source of the data; that it is specified that the application and/or analysis is the result of the user's independent processing of the data; and that neither the basic data nor any re-processed version or application thereof may be sold or offered for sale in any form whatsoever without prior permission from Stats SA.

CONTENTS

KEY FINDINGS

1. Foreign travellers	2
2. Ports of entry and modes of travel used by overseas and mainland Africa travellers	2
2.1 Overseas travellers	2
2.2 Mainland Africa travellers	2
3. Purpose of visit	3
4. Leading source countries of overseas and mainland Africa travellers	3
5. Historical trends in travel	3
6. South African residents	3

EXPLANATORY NOTES

1. Sources of data	4
2. Glossary of terms	4
3. Symbols and abbreviations used	4

GRAPHICS	5-8
-----------------	-----

TABLES

1. TRAVELLERS

1.1 Arrivals and departures of foreign travellers	
1.1.1 Purpose of visit	9
1.1.2 Mode of travel	9
1.2 Foreign travellers	
1.2.1 Arrivals by country of residence and mode of travel	10
1.2.2 Arrivals by country of residence and purpose of visit	13

GENERAL INFORMATION	16
----------------------------	----

Note: The information on the total number of arrivals and departures of South African citizens and permanent residents is collected from the scanning of passports. However, data on country of final destination and purpose of visit will be available when the Department of Home Affairs re-introduces the completion of departure forms by South African citizens and permanent residents at the three international airports (OR Tambo, Cape Town and Durban).

The release provides information on travellers. Due to unavailability of data from suppliers, information on documented immigrants is not included in this release. The August 2006 documented immigration information will be provided as soon as it is made available to Stats SA.

It is important to note that travellers include (a) same day visitors and tourists and (b) other travellers such as migrant workers from other countries paid in South Africa.

KEY FINDINGS

1. Foreign travellers

The total number of foreign travellers who visited South Africa from mainland Africa, overseas and unspecified countries, arriving through all ports of entry during August 2006 was 701 991. The August 2006 figure represents an increase of 8,0% when compared with the August 2005 figure of 650 290 (see Table 1.1.1). The number of foreign travellers who departed from South Africa in August 2006 was 613 959, which increased by 6,5% from 576 260 recorded in August 2005.

During August 2006, the most common mode of travel used by foreign travellers arriving in South Africa was road, involving 501 910 (71,5%) of total travellers, followed by air, involving 185 155 (26,4%) travellers (see Table 1.1.2). Of the total number of foreign travellers arriving by air, 156 894 (84,7%) arrived through OR Tambo International Airport while 26 843 (14,5%) arrived through Cape Town International Airport, 403 (0,2%) arrived through Durban International Airport and the rest, 1 015 (0,6%), arrived through other airports (see Table 1.1.2). Those arriving by rail, sea and unspecified modes of travel were 14 926 (2,1%).

Among the total number of foreign travellers departing from South Africa, road was the most common mode of travel (433 136 representing 70,5%), followed by air (180 622 representing 29,4%). Of the total number of foreign travellers departing by air, 151 032 (83,6%) departed from OR Tambo International Airport, 27 920 (15,5%) departed from Cape Town International Airport, 437 (0,2%) used Durban International Airport and the rest, 1 233 (0,7%), departed through other airports (see Table 1.1.2). Those departing by rail, sea and unspecified modes of travel were 201 (0,1%). Figures 1a and 1b show the breakdown of air arrivals and departures, respectively, according to the airport used. It is observed that the distribution of air arrivals by port of entry and air departures by port of exit are almost the same.

2. Ports of entry and modes of travel used by overseas and mainland Africa travellers

2.1 Overseas travellers

Table 1.2.1 shows that during August 2006, 172 812 overseas travellers visited South Africa. This represents a 5,4% increase in the volume of overseas travellers as compared to August 2005 when there were 163 888 overseas travellers.

It is further observed that in August 2006, there were 146 052 air arrivals from overseas, which accounts for 84,5% of all overseas arrivals. Of these overseas air arrivals, 120 019 (82,2%) arrived through OR Tambo International Airport; 25 103 (17,2%) arrived through Cape Town International Airport; 291 (0,2%) arrived through Durban International Airport and the rest, 639 (0,4%), arrived through other airports.

The number of overseas travellers arriving by road during August 2006 was 26 181 (15,2%). The number of those arriving by rail, sea and unspecified mode of travel was 579 (0,3%). (An excel spreadsheet on the mode of travel for all countries of origin is available on request.)

2.2 Mainland Africa travellers

Table 1.2.1 further shows that the total number of travellers who arrived in South Africa from mainland Africa during August 2006 was 525 501, as compared to the August 2005 figure of 481 986, representing an increase of 9,0%. Of these travellers from mainland Africa, the number arriving by road was 474 944 (90,4%).

In August 2006, there were 38 217 (7,3%) air travellers arriving from mainland Africa. Of these air arrivals, 36 127 (94,5%) arrived through OR Tambo International Airport, 1 623 (4,3%) arrived through Cape Town International Airport, 112 (0,3%) arrived through Durban International Airport while the rest, 355 (0,9%), arrived through other airports. The number of travellers from mainland Africa arriving by rail, sea and unspecified mode of travel was 12 340, which constituted 2,3% of all travellers from Mainland Africa.

3. Purpose of visit

Overseas travellers: Of the 172 812 overseas travellers visiting South Africa during August 2006, 159 190 (92,1%) stated that they were in South Africa for holidays while 5 496 (3,2%) stated that they were on business trips (see Table 1.2.2). Overseas travellers arriving for the purpose of work were 5 568 (3,2%), those on transit were 1 140 (0,7%), those visiting for the purpose of study were 1 104 (0,6%) and those with border traffic concession were 291 (0,2%). (An excel spreadsheet on the purpose of visit for all countries of origin is available on request.)

Mainland Africa travellers: Of the 525 501 travellers from mainland Africa visiting South Africa during August 2006, the majority 492 041 (93,6%) stated that they were in South Africa for holidays while 9 102 (1,7%) stated that they were on business trips. A further breakdown of travellers from mainland Africa is as follows: those visiting for the purpose of study were 6 341 (1,2%), those arriving for the purpose of work were 2 599 (0,5%), those with border traffic concession were 11 989 (2,3%) and travellers on transit were 3 081 (0,6%), as shown in Table 1.2.2.

4. Leading source countries of overseas and mainland Africa travellers

Overseas travellers: Figure 2a indicates that during August 2006, the number of travellers from the UK visiting South Africa was 35 834 (20,7%), making it the leading country of origin of overseas travellers. This was followed by travellers from the USA, 24 391 (14,1%) and Germany, 15 934 (9,2%). Other main countries of origin of overseas travellers were: Italy, 10 972 (6,3%); France, 10 530 (6,1%); the Netherlands, 8 861 (5,1%); Australia, 7 270 (4,2%) and Spain, 4 875 (2,8%). Upon comparing the figures of August 2006 with those of August 2005 (see Figure 2b), the highest increase in the number of arrivals from these leading source countries was for Spain, (20,9% increase from 4 033 in 2005 to 4 875 in 2006).

Travellers from mainland Africa: During August 2006, the top eight countries (Figure 3a) in mainland Africa from which travellers arriving in South Africa came were: Lesotho, 143 602 (27,3%); Swaziland, 88 217 (16,8%); Zimbabwe, 86 311 (16,4%); Mozambique, 78 004 (14,8%); Botswana, 65 093 (12,4%); Namibia, 19 506 (3,7%); Zambia, 14 465 (2,8%) and Malawi, 11 999 (2,3%). When comparing arrival figures from the leading source countries from mainland Africa, (see Figure 3b) for August 2005 and August 2006, the highest increase in the number of travellers was from Malawi, (32,9% increase from 9 028 in 2005 to 11 999 in 2006).

5. Historical trends in travel

It should be borne in mind that there is often a substantial month-to-month variation in travelling figures, and one needs to look at a longer period of several months to be able to detect any trends and patterns. The trend regarding the number of overseas travellers arriving in South Africa since 2002 is shown in Figure 4. Although the figure shows evidence of seasonal fluctuations, the level of overseas travel over the period has shown an upward trend since 2002.

6. South African residents

During August 2006, the most common mode of travel used by South African residents arriving in South Africa was road, involving 209 836 (61,4%) travellers, followed by air, 130 058 (38,1%) and those arriving by rail, sea and unspecified modes of travel, 1 698 (0,5%). The most common mode of travel for South African residents departing was road, involving 210 957 (59,9%) travellers, followed by air, 140 944 (40,0%) and those departing by rail, sea and unspecified modes of travel, 124 (0,1%) as shown in Table 1.1.2.

PJ Lehohla
Statistician-General

EXPLANATORY NOTES

1. Sources of data

Legal movements across South African borders as well as legal immigration into South Africa fall under the jurisdiction of the Department of Home Affairs (DHA). Information on tourism and documented immigration is obtained from all ports of entry. Information on arrivals into and departures from South Africa is captured by DHA and loaded onto the mainframe at State Information Technology Agency (SITA). Stats SA accesses these data remotely, which is then used as part of the input data for this report. Information on legal immigrants to South Africa is sent to Stats SA on computer printout from DHA. The information on the printout is coded and captured by data capturing staff at Stats SA.

2. Glossary of terms

Key terms used in this release are defined as follows:

Tourism comprises the activities of persons travelling to and staying in places outside their usual environment for not more than one consecutive year for leisure, business and other purposes not related to the exercise of an activity remunerated from within the place visited. The usual environment of a person consists of a certain area around his/her place of residence plus all other places s/he frequently visits.

A tourist (overnight visitor) is a visitor who stays at least one night in collective or private accommodation in the place visited. An international tourist is an international visitor who stays at least one night in collective or private accommodation in the country visited.

Traveller is any person on a trip between two or more localities. An **international traveller** refers to any person on a trip between two or more countries.

South African resident refers to either a South African citizen or a non-South African citizen with a South African permanent residential permit.

Foreign traveller refers to a traveller who is not a South African resident.

Mainland Africa refers to all the countries in Africa excluding the islands.

Overseas refers to all countries except countries from mainland Africa and from 'unspecified' countries.

3. Symbols and abbreviations used

- = nil

.. = not applicable

Fig 1a: Air arrivals by port of entry, South Africa, August 2006

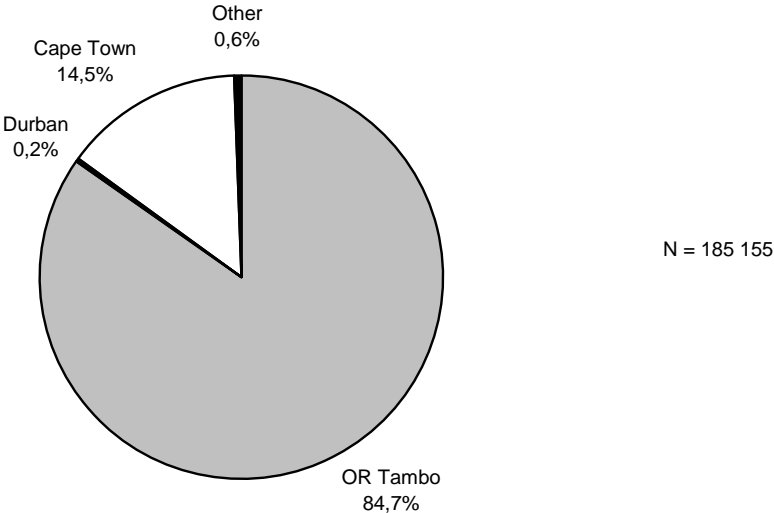


Fig 1b: Air departures by port of exit, South Africa, August 2006

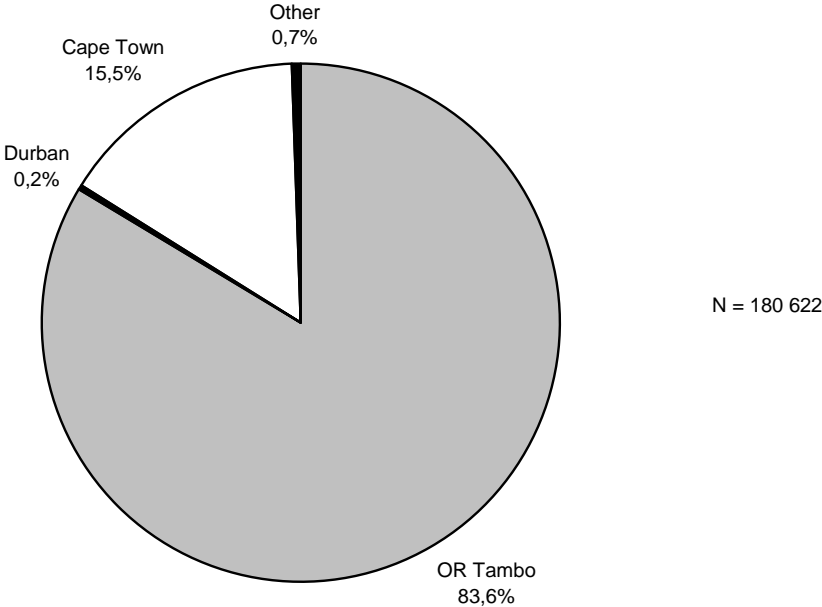


Fig. 2a: The number of overseas travellers arriving from leading source countries in August 2005 and August 2006

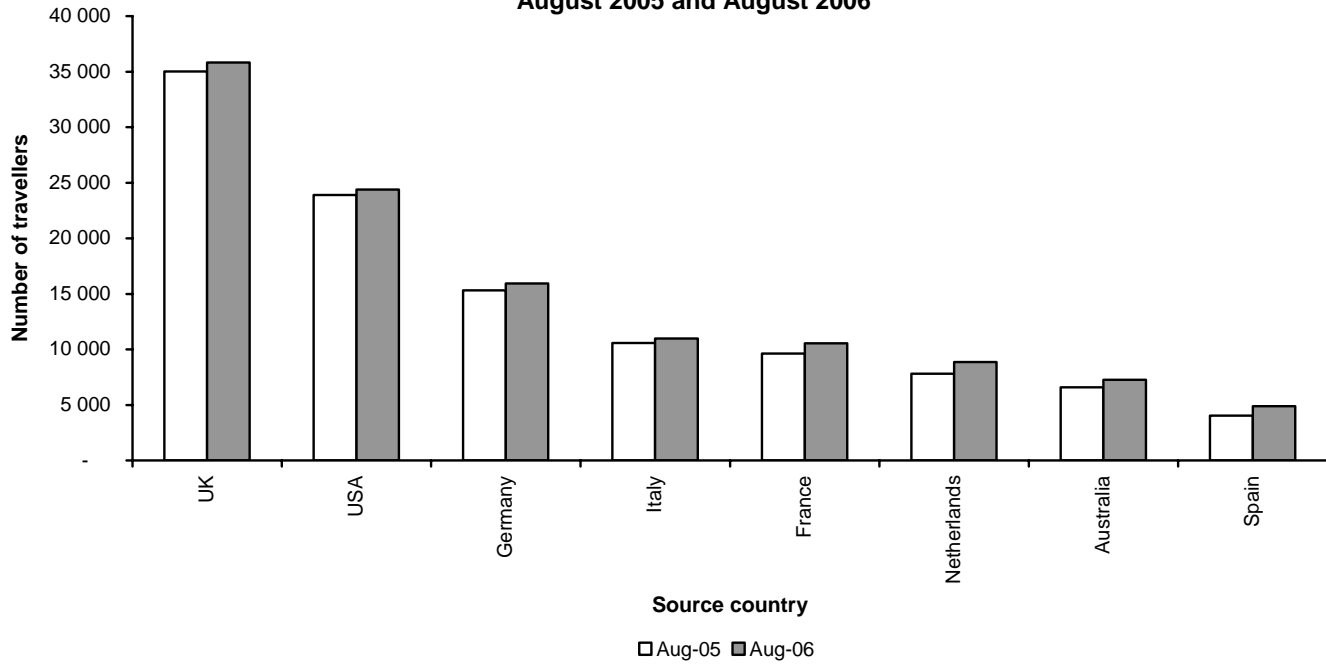


Fig. 2b: Percentage change in number of overseas travellers arriving from leading source countries in August 2006 compared with August 2005

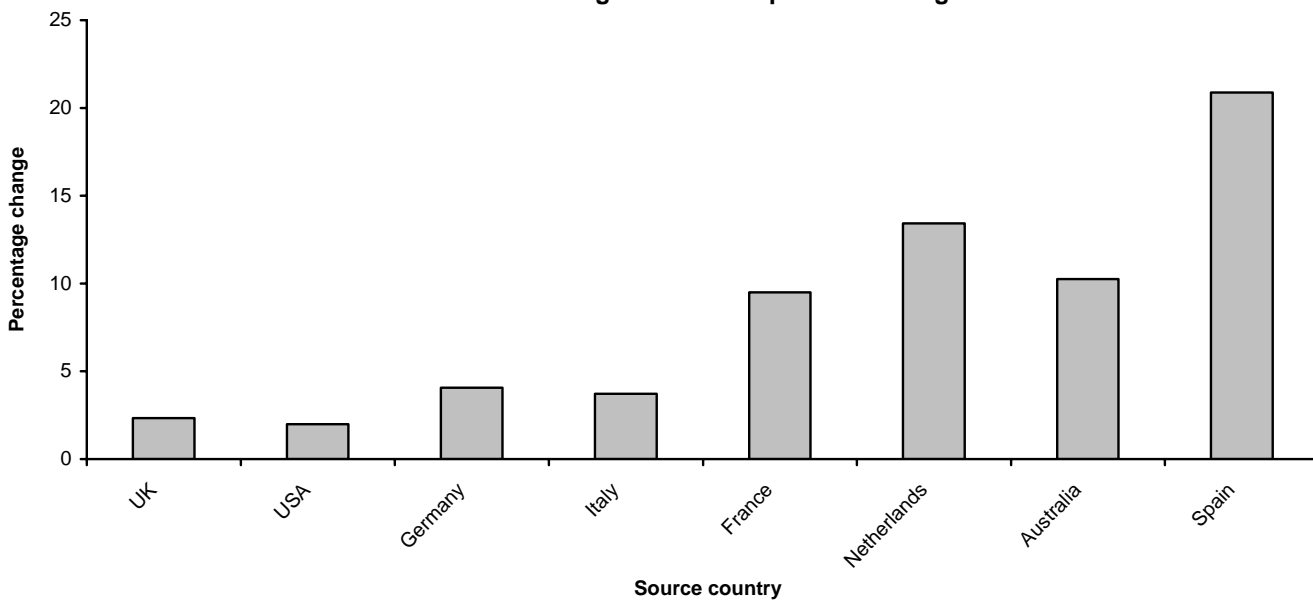


Fig. 3a: The number of travellers from mainland African countries arriving from leading source countries in August 2005 and August 2006

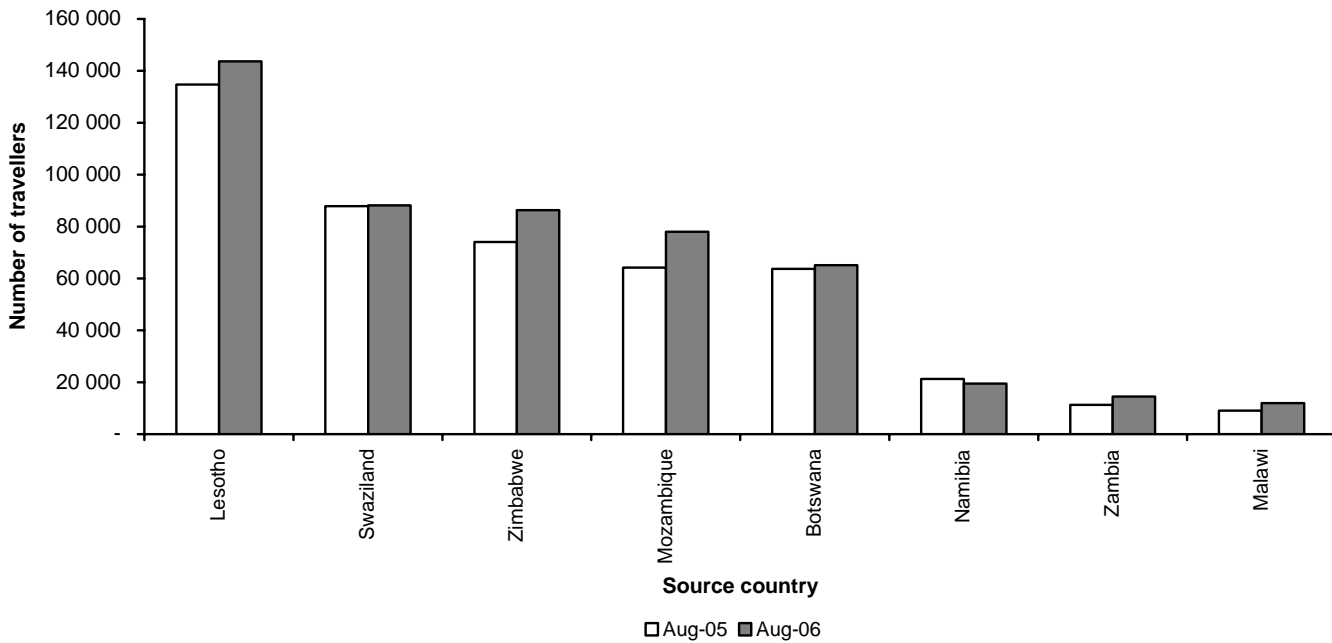
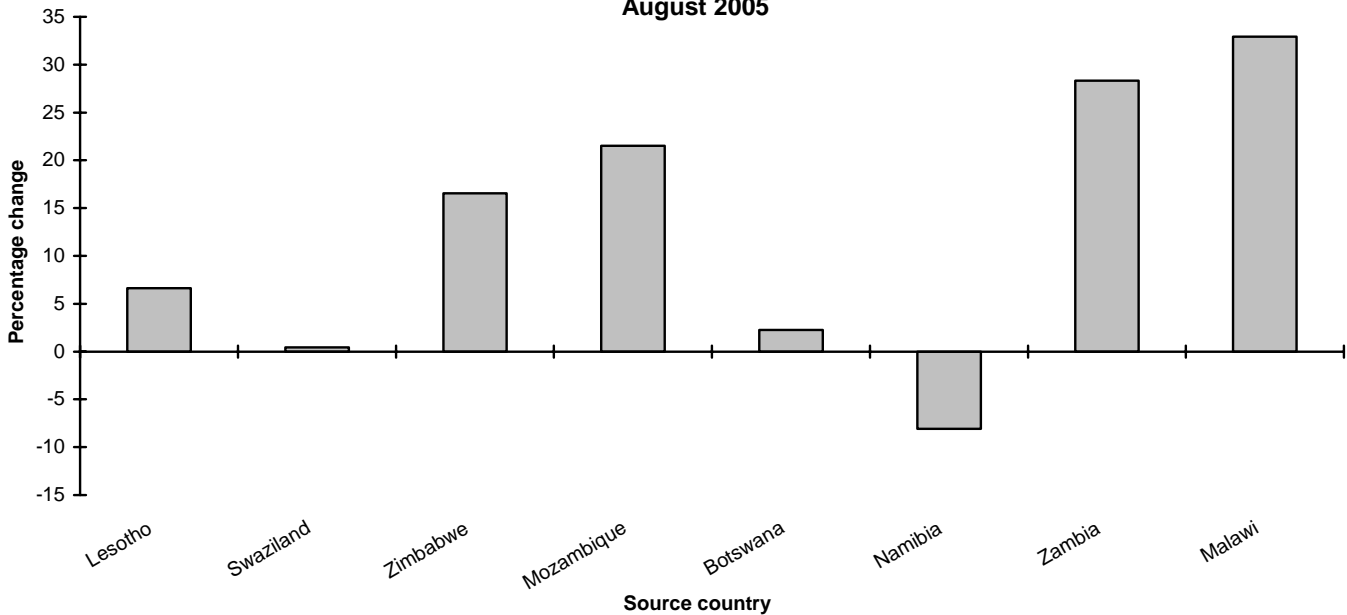
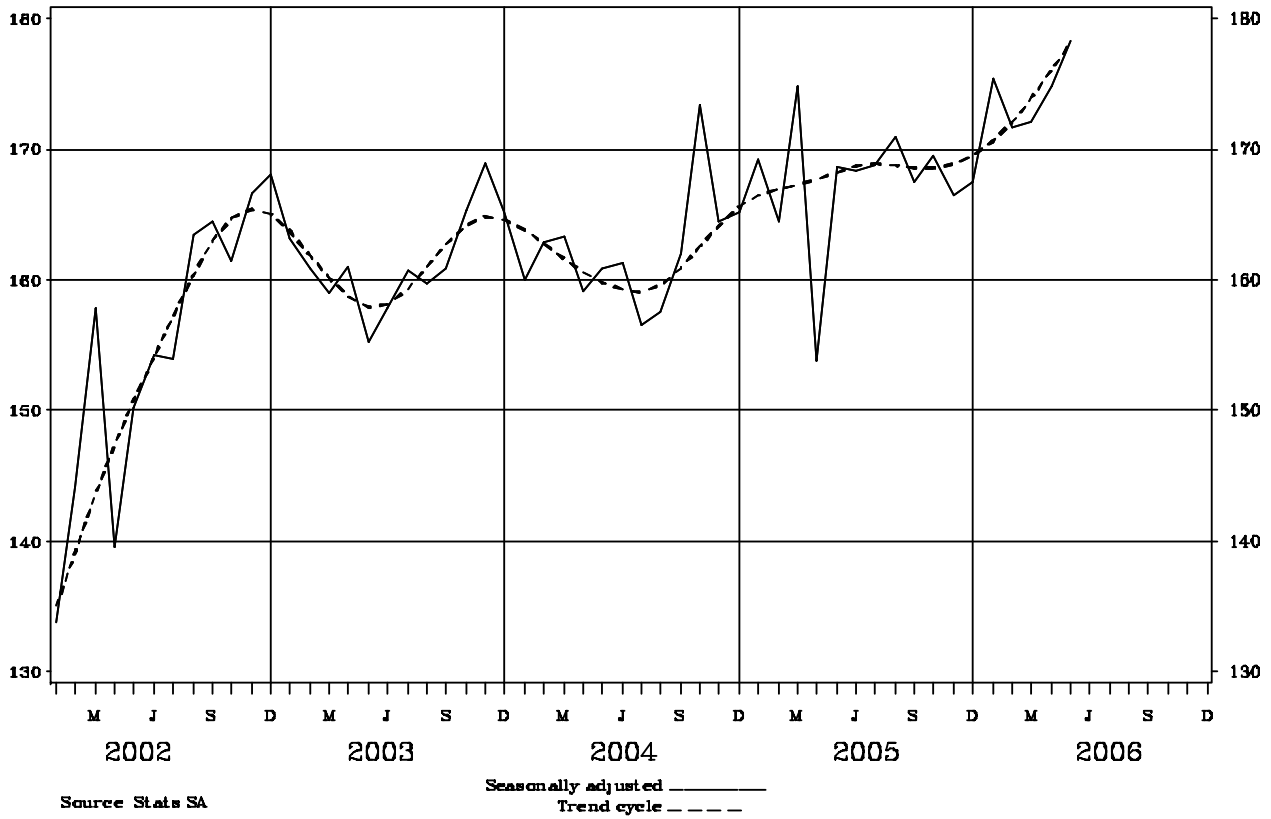


Fig. 3b: Percentage change in the number of travellers from mainland African countries arriving from leading source countries in August 2006 compared with August 2005



**Fig 4: Overseas Travellers - Arrivals
Thousands**



1. TRAVELLERS

1.1 Arrivals and departures of foreign travellers and South African residents

1.1.1 Purpose of visit

Purpose of visit	August		Jan – Aug. Cum. Total		Year
	2005	2006	2005	2006	2005
(a) ARRIVALS:					
1.Foreign travellers					
.Actual data	650 290	701 991	4 772 790	5 443 237	7 518 320
.Seasonally adjusted data	645 181	697 971
.Business	17 000	14 643	130 049	129 200	201 522
.Holiday	592 084	652 284	4 289 550	4 992 633	6 811 647
.Study	9 066	7 611	100 332	96 875	133 041
.Work	8 019	8 622	61 338	68 985	94 679
.Contract workers	4 601		37 536	8 027	54 899
.Border traffic concession	14 023	14 232	114 518	108 580	164 087
.Transit	5 253	4 227	37 695	36 434	55 886
.Unspecified	244	372	1 772	2 503	2 559
2.South African residents	-	341 592	-	2 855 315	-
(b) DEPARTURES:					
1.Foreign travellers	576 260	613 959	4 264 229	4 759 730	6 728 742
2.South Africans residents	-	352 025	-	2 732 205	-

1. TRAVELLERS

1.1 Arrivals and departures of foreign travellers and South African residents

1.1.2 Mode of travel

Arrivals and departures	Total	Mode of travel (August 2006)								
		AIR					RAIL	ROAD	SEA	UNSPEC.
		(C/Town)	(Durban)	(OR Tambo)	(Other)	Total				
(a) ARRIVALS:										
1.Foreign travellers	701 991	26 843	403	156 894	1 015	185 155	43	501 910	456	14 427
2.South African residents	341 592	17 097	876	108 971	3 114	130 058	-	209 836	361	1 337
(b) DEPARTURES:										
1.Foreign travellers	613 959	27 920	437	151 032	1 233	180 622	8	433 136	118	75
2.South African residents	352 025	17 672	993	119 304	2 975	140 944	2	210 957	82	40

1. TRAVELLERS
1.2 Foreign travellers
1.2.1 Arrivals by country of residence and mode of travel

Country	Foreign travellers												
	Mode of travel (August 2006)											Jan-Aug. Cum. Total	
	August		AIR					RAIL	ROAD	SEA	UNSPEC.	2006	2005
	2005	2006	(C/Town)	(Durban)	(OR Tambo)	(Other)	Total						
GRAND TOTAL	650 290	701 991	26 843	403	156 894	1 015	185 155	43	501 910	456	14 427	5 443 237	4 772 790
OVERSEAS TOTAL	163 888	172 812	25 103	291	120 019	639	146 052	24	26 181	238	317	1 322 223	1 251 640
EUROPE	101 392	107 345	20 129	96	67 043	284	87 552	17	19 528	161	87	840 865	809 235
Austria	1 461	1 373	273	-	827	5	1 105	-	268	-	-	12 610	12 509
Belgium	2 750	2 996	371	-	1 835	14	2 220	-	772	4	-	23 508	22 968
Denmark	1 153	1 218	152	2	911	-	1 065	-	151	-	2	15 253	13 524
France	9 616	10 530	642	11	7 535	20	8 208	-	2 311	11	-	67 727	66 775
Germany	15 311	15 934	4 629	7	8 057	50	12 743	6	3 150	16	19	149 677	145 810
Greece	868	776	41	1	578	2	622	-	151	1	2	5 114	5 458
Ireland	2 474	2 883	838	8	1 624	12	2 482	-	397	-	4	22 611	21 734
Italy	10 578	10 972	2 113	5	6 803	2	8 923	-	2 048	1	-	35 888	35 068
Netherlands	7 812	8 861	1 673	1	4 207	4	5 885	2	2 936	29	9	67 249	62 978
Portugal	2 749	2 623	77	13	1 246	8	1 344	-	1 277	-	2	17 950	19 639
Spain	4 033	4 875	277	3	3 881	24	4 185	-	683	3	4	20 391	18 963
Sweden	1 408	1 358	248	-	923	3	1 174	-	179	4	1	22 759	20 652
Switzerland	1 916	1 903	164	1	1 295	17	1 477	-	416	10	-	23 659	21 522
UK	35 015	35 834	7 519	40	23 900	109	31 568	6	4 190	29	41	306 341	300 309
Other	4 248	5 209	1 112	4	3 421	14	4 551	3	599	53	3	50 128	41 326
NORTH AMERICA	26 973	27 757	2 377	16	22 278	266	24 937	2	2 756	25	37	206 038	188 191
Canada	3 059	3 362	397	3	2 492	15	2 907	-	444	8	3	30 909	25 958
USA	23 914	24 391	1 980	13	19 783	251	22 027	2	2 311	17	34	175 098	162 233
Other	-	4	-	-	3	-	3	-	1	-	-	31	-
CENTRAL & SOUTH AMERICA	3 802	4 415	305	3	3 574	13	3 895	-	508	8	4	35 856	32 180
Argentina	529	557	135	-	360	-	495	-	60	-	2	6 466	6 432
Brazil	1 830	2 525	27	3	2 245	7	2 282	-	235	8	-	19 058	14 831
Chile	222	223	15	-	190	1	206	-	17	-	-	1 998	1 838
Other	1 221	1 110	128	-	779	5	912	-	196	-	2	8 334	9 079

1. TRAVELLERS

1.2 Foreign travellers

1.2.1 Arrivals by country of residence and mode of travel (continued)

Country	Foreign travellers												
	Mode of travel (August 2006)												
	August		AIR					RAIL	ROAD	SEA	UNSPEC.	Jan-Aug. Cum. Total	
	2005	2006	(C/Town)	(Durban)	(OR Tambo)	(Other)	Total					2006	2005
AUSTRALASIA	8 249	8 969	535	22	7 550	39	8 146	-	794	26	3	66 995	60 416
Australia	6 594	7 270	353	19	6 237	34	6 643	-	600	26	1	55 125	48 603
New Zealand	1 570	1 632	179	3	1 265	5	1 452	-	178	-	2	11 379	11 253
Other	85	67	3	-	48	-	51	-	16	-	-	491	560
MIDDLE EAST	3 955	4 063	270	3	3 573	9	3 855	-	207	-	1	25 433	23 476
Israel	1 441	1 356	20	1	1 238	5	1 264	-	92	-	-	9 759	10 374
Saudi Arabia	951	847	110	-	722	-	832	-	15	-	-	3 282	4 034
Turkey	363	337	23	-	281	4	308	-	29	-	-	3 992	2 785
Other	1 200	1 523	117	2	1 332	-	1 451	-	71	-	1	8 400	6 283
ASIA	18 024	18 807	1 373	13	14 994	27	16 407	5	2 198	18	179	135 775	126 492
China	3 532	3 060	278	-	2 375	-	2 653	-	352	-	55	26 008	25 981
Hong Kong	785	522	7	-	497	-	504	-	17	-	1	4 982	5 258
India	3 345	4 080	81	11	3 161	2	3 255	1	759	1	64	31 683	27 122
Japan	2 986	3 107	201	-	2 797	1	2 999	-	105	3	-	19 386	16 708
Malaysia	926	717	217	-	476	1	694	-	23	-	-	5 721	6 632
Philippines	865	529	31	-	423	2	456	-	46	13	14	4 523	4 494
Rep of China (Taiwan)	1 086	1 260	175	-	815	20	1 010	1	219	-	30	9 423	9 126
Rep of Korea	1 854	1 671	61	-	1 449	1	1 511	-	160	-	-	11 630	10 992
Singapore	463	832	170	-	646	-	816	-	16	-	-	4 158	3 680
Other	2 182	3 029	152	2	2 355	-	2 509	3	501	1	15	18 261	16 499

1. TRAVELLERS

1.2 Foreign travellers

1.2.1 Arrivals by country of residence and mode of travel (concluded)

Country	Foreign travellers												
	Mode of travel (August 2006)												
	August		AIR					RAIL	ROAD	SEA	UNSPEC.	Jan-Aug. Cum. Total	
	2005	2006	(C/Town)	(Durban)	(OR Tambo)	(Other)	Total					2006	2005
INDIAN OCEAN ISLANDS													
	1 493	1 456	114	138	1 007	1	1 260	-	190	-	6	11 261	11 650
Mauritius	1 243	1 236	113	131	805	1	1 050	-	180	-	6	9 368	9 485
Other	250	220	1	7	202	-	210	-	10	-	-	1 893	2 165
MAINLAND AFRICA													
	481 986	525 501	1 623	112	36 127	355	38 217	19	474 944	164	12 157	4 095 982	3 472 401
Angola	2 445	2 178	76	1	1 904	25	2 006	-	170	-	2	19 404	19 287
Botswana	63 654	65 093	30	4	2 506	113	2 653	-	62 378	1	61	481 500	521 920
Kenya	2 001	2 034	12	-	1 703	5	1 720	-	306	-	8	15 677	14 456
Lesotho	134 684	143 602	4	3	555	9	571	-	131 444	31	11 556	1 269 360	1 063 752
Malawi	9 028	11 999	1	-	1 754	9	1 764	-	10 223	1	11	81 661	68 754
Mozambique	64 181	78 004	7	71	1 983	15	2 076	1	75 875	1	51	595 426	380 374
Namibia	21 221	19 506	1 334	-	2 917	30	4 281	1	15 056	88	80	145 283	147 058
Nigeria	2 745	3 360	13	-	3 045	9	3 067	1	282	-	10	22 417	19 203
Swaziland	87 828	88 217	3	25	678	-	706	6	87 377	1	127	642 695	590 508
Zambia	11 273	14 465	11	-	4 796	22	4 829	1	9 629	-	6	103 988	83 437
Zimbabwe	74 055	86 311	32	5	6 093	30	6 160	6	79 894	40	211	645 261	499 874
Other	8 871	10 732	100	3	8 193	88	8 384	3	2 310	1	34	73 310	63 778
UNSPECIFIED	4 416	3 678	117	-	748	21	886	-	785	54	1 953	25 032	48 749

1. TRAVELLERS
1.2 Foreign travellers
1.2.2 Arrivals by country of residence and purpose of visit

Country	Foreign travellers											
	August		Purpose of visit (August 2006)								Contract worker	Border traffic concession
			Visitors/tourists*									
	2005	2006	Business	Holiday	Study	Work	Transit	Unspec.	Total			
GRAND TOTAL	650 290	701 991	14 643	652 284	7 611	8 622	4 227	372	687 759	-	14 232	
OVERSEAS TOTAL	163 888	172 812	5 496	159 190	1 104	5 568	1 140	23	172 521	-	291	
EUROPE	101 392	107 345	2 978	100 432	659	2 643	560	2	107 274	-	71	
Austria	1 461	1 373	31	1 304	10	21	7	-	1 373	-	-	
Belgium	2 750	2 996	80	2 822	13	63	18	-	2 996	-	-	
Denmark	1 153	1 218	70	1 099	5	39	3	-	1 216	-	2	
France	9 616	10 530	174	9 969	80	261	46	-	10 530	-	-	
Germany	15 311	15 934	524	14 733	186	418	54	1	15 916	-	18	
Greece	868	776	19	724	4	22	7	-	776	-	-	
Ireland	2 474	2 883	60	2 741	14	53	11	-	2 879	-	4	
Italy	10 578	10 972	95	10 753	11	56	57	-	10 972	-	-	
Netherlands	7 812	8 861	213	8 394	88	133	32	-	8 860	-	1	
Portugal	2 749	2 623	27	2 541	10	26	17	-	2 621	-	2	
Spain	4 033	4 875	19	4 759	10	45	42	-	4 875	-	-	
Sweden	1 408	1 358	82	1 157	27	83	8	-	1 357	-	1	
Switzerland	1 916	1 903	64	1 779	16	34	10	-	1 903	-	-	
UK	35 015	35 834	1 179	33 713	139	610	152	1	35 794	-	40	
Other	4 248	5 209	341	3 944	46	779	96	-	5 206	-	3	
NORTH AMERICA	26 973	27 757	704	26 209	156	488	169	-	27 726	-	31	
Canada	3 059	3 362	132	3 083	26	78	42	-	3 361	-	1	
USA	23 914	24 391	572	23 122	130	410	127	-	24 361	-	30	
Other	-	4	-	4	-	-	-	-	4	-	-	
CENTRAL & SOUTH AMERICA	3 802	4 415	134	4 027	29	144	77	-	4 411	-	4	
Argentina	529	557	25	507	3	15	5	-	555	-	2	
Brazil	1 830	2 525	40	2 391	17	29	48	-	2 525	-	-	
Chile	222	223	6	207	-	7	3	-	223	-	-	
Other	1 221	1 110	63	922	9	93	21	-	1 108	-	2	

*Purpose of visit in this case is not linked to duration of stay therefore these individuals can be either visitors or tourists.

1. TRAVELLERS

1.2 Foreign travellers

1.2.2 Arrivals by country of residence and purpose of visit (continued)

Country	Foreign travellers										
	August		Purpose of visit (August 2006)							Contract worker	Border traffic concession
			Visitors/tourists*								
	2005	2006	Business	Holiday	Study	Work	Transit	Unspec.	Total		
AUSTRALASIA	8 249	8 969	230	8 573	14	105	44	-	8 966	-	3
Australia	6 594	7 270	186	6 951	10	83	39	-	7 269	-	1
New Zealand	1 570	1 632	40	1 568	1	17	4	-	1 630	-	2
Other	85	67	4	54	3	5	1	-	67	-	-
MIDDLE EAST	3 955	4 063	141	3 717	35	142	26	1	4 062	-	1
Israel	1 441	1 356	50	1 257	5	35	9	-	1 356	-	-
Saudi Arabia	951	847	5	821	4	10	7	-	847	-	-
Turkey	363	337	14	269	11	39	4	-	337	-	-
Other	1 200	1 523	72	1 370	15	58	6	1	1 522	-	1
ASIA	18 024	18 807	1 258	14 897	185	2 023	249	20	18 632	-	175
China	3 532	3 060	356	2 037	63	497	48	4	3 005	-	55
Hong Kong	785	522	30	483	3	4	1	-	521	-	1
India	3 345	4 080	313	3 171	29	443	57	6	4 019	-	61
Japan	2 986	3 107	102	2 827	18	136	24	-	3 107	-	-
Malaysia	926	717	29	648	3	29	8	-	717	-	-
Philippines	865	529	9	178	1	279	49	-	516	-	13
Rep of China (Taiwan)	1 086	1 260	120	893	16	177	24	-	1 230	-	30
Rep of Korea	1 854	1 671	37	1 551	25	50	8	-	1 671	-	-
Singapore	463	832	67	725	-	36	4	-	832	-	-
Other	2 182	3 029	195	2 384	27	372	26	10	3 014	-	15

*Purpose of visit in this case is not linked to duration of stay therefore these individuals can be either visitors or tourists.

1. TRAVELLERS

1.2 Foreign travellers

1.2.2 Arrivals by country of residence and purpose of visit (concluded)

Country	Foreign travellers											
	August		Purpose of visit (August 2006)								Contract worker	Border traffic concession
			Visitors/tourists*									
	2005	2006	Business	Holiday	Study	Work	Transit	Unspec.	Total			
INDIAN OCEAN ISLANDS												
	1 493	1 456	51	1 335	26	23	15	-	1 450	-	6	
Mauritius	1 243	1 236	42	1 130	23	20	15	-	1 230	-	6	
Other	250	220	9	205	3	3	-	-	220	-	-	
MAINLAND AFRICA												
	481 986	525 501	9 102	492 041	6 341	2 599	3 081	348	513 512	-	11 989	
Angola	2 445	2 178	73	1 867	143	56	36	1	2 176	-	2	
Botswana	63 654	65 093	178	61 558	2 711	247	342	-	65 036	-	57	
Kenya	2 001	2 034	150	1 616	80	154	17	9	2 026	-	8	
Lesotho	134 684	143 602	562	130 011	590	290	696	-	132 149	-	11 453	
Malawi	9 028	11 999	669	11 126	33	52	87	21	11 988	-	11	
Mozambique	64 181	78 004	299	77 201	255	124	74	2	77 955	-	49	
Namibia	21 221	19 506	2 036	15 768	462	74	1 144	-	19 484	-	22	
Nigeria	2 745	3 360	88	2 918	160	155	16	13	3 350	-	10	
Swaziland	87 828	88 217	403	86 402	882	148	255	-	88 090	-	127	
Zambia	11 273	14 465	1 828	12 331	108	81	109	2	14 459	-	6	
Zimbabwe	74 055	86 311	2 038	82 440	593	752	189	88	86 100	-	211	
Other	8 871	10 732	778	8 803	324	466	116	212	10 699	-	33	
UNSPECIFIED	4 416	3 678	45	1 053	166	455	6	1	1 726	-	1 952	

*Purpose of visit in this case is not linked to duration of stay therefore these individuals can be either visitors or tourists.

General information

Stats SA publishes approximately 300 different statistical releases each year. It is not economically viable to produce them in more than one of South Africa's eleven official languages. Since the releases are used extensively, not only locally but also by international economic and social-scientific communities, Stats SA releases are published in English.

Stats SA has copyright on this publication. Users may apply the information as they wish, provided that they acknowledge Stats SA as the source of the basic data wherever they process, apply, utilise, publish or distribute the data; and also that they specify that the relevant application and analysis (where applicable) result from their own processing of the data.

Advance release calendar

An advance release calendar is disseminated on www.statssa.gov.za

Stats SA products

A complete set of Stats SA publications is available at the Stats SA Library and the following libraries:

National Library of South Africa, Pretoria Division
National Library of South Africa, Cape Town Division
Natal Society Library, Pietermaritzburg
Library of Parliament, Cape Town
Bloemfontein Public Library
Johannesburg Public Library
Eastern Cape Library Services, King William's Town
Central Regional Library, Polokwane
Central Reference Library, Nelspruit
Central Reference Collection, Kimberley
Central Reference Library, Mafikeng

Stats SA also provides a subscription service.

Electronic services

A large range of data are available via on-line services, diskette and computer printouts. For more details about our electronic data, contact user information services.

You can visit us on the Internet at: www.statssa.gov.za

Enquiries

Telephone: (012) 310 8600/ 8390/ 8351/ 4892/ 8496/ 8095 (user information services)
(012) 310 8384 (technical enquiries)
(012) 310 8161 (orders)
(012) 310 4883/4885/8018 (library)

Fax: (012) 310 8500/ 8495 (user information services)
(012) 310 6937 (technical enquiries)

Email: kennethma@statssa.gov.za (technical enquiries)
info@statssa.gov.za (user information services)
distribution@statssa.gov.za (orders)

Postal address: Private Bag X44, Pretoria, 0001

Produced by Stats SA