



**stats sa**

Department:  
Statistics South Africa  
**REPUBLIC OF SOUTH AFRICA**

Private Bag X44, Pretoria, 0001, South Africa, ISibalo House, Koch Street, Salvokop, Pretoria, 0002  
www.statssa.gov.za, info@statssa.gov.za, Tel +27 12 310 8911

## **STATISTICAL RELEASE**

### **P0350**

# **International tourism**

**June 2024**

**Embargoed until:  
30 July 2024  
10:00**

**ENQUIRIES:**  
Muthetho Nkwinika  
Tel: (012) 310 8554

**FORTHCOMING ISSUE:**  
July 2024

**EXPECTED RELEASE DATE:**  
August 2024

<b>Contents</b>	<b>Page</b>
<b>List of tables</b> .....	<b>iii</b>
<b>List of figures</b> .....	<b>iii</b>
<b>List of annexures</b> .....	<b>iii</b>
<b>Preface</b> .....	<b>iv</b>
<b>1. Highlights of the results</b> .....	<b>1</b>
<b>2. Key findings</b> .....	<b>2</b>
2.1 Travellers .....	2
2.1.1 Number of travellers .....	2
2.1.2 Mode of travel of travellers .....	3
2.2 Visitors .....	3
2.3 Tourists .....	4
2.3.1 Sex and age distribution of tourists .....	4
2.3.2 Regional and national distribution of tourists .....	6
2.3.3 Purpose of visit of tourists.....	8
2.3.4 Mode of travel of tourists .....	10
2.3.5 Quarterly and annual trends .....	10
<b>3. Annexures</b> .....	<b>13</b>
<b>4. Explanatory notes</b> .....	<b>38</b>
4.1 Introduction .....	38
4.2 Purpose of the statistical release .....	38
4.3 Scope and coverage .....	38
4.4 Data.....	38
4.5 Limitations.....	39
4.5.1 Outbound tourists.....	39
4.6 Definition of terms.....	39
4.6.1 Definitions used by the United Nations Tourism (UN Tourism) .....	39
4.6.2 Definitions used specifically in this release.....	39
4.7 Symbols used .....	39
4.8 Rounding off.....	40
<b>5. General information</b> .....	<b>40</b>

## List of tables

Table 1 – Number of South African residents and foreign travellers by travel direction .....	2
Table 2 – Number of South African residents and foreign travellers by travel direction and mode of travel .....	3
Table 3 – Number of visitors by type of visitor.....	4
Table 4 – Number of tourists by region of residence and purpose of visit .....	9

## List of figures

Figure 1 – Percentage distribution of tourists by region of residence and sex, June 2024.....	5
Figure 2 – Percentage distribution of tourists by region of residence and age, June 2024 .....	6
Figure 3 – Number of tourists from the 10 leading overseas countries in June 2023 and June 2024.....	7
Figure 4 – Number of tourists from the 10 leading SADC countries in June 2023 and June 2024.....	7
Figure 5 – Number of tourists from the 10 leading 'other' African countries in June 2023 and June 2024.....	8
Figure 6 – Percentage distribution of tourists by region of residence and mode of travel, June 2024 .....	10
Figure 7 – Number of tourists from overseas countries by quarter: 2016 – 2024 .....	11
Figure 8 – Number of tourists from SADC countries by quarter: 2016 – 2024.....	11
Figure 9 – Number of tourists from 'other' African countries by quarter: 2016 – 2024.....	12

## List of annexures

3.1 Annexure A – Number of tourists' difference between June 2023 and June 2024 by country of residence.....	13
3.2 Annexure B – Number of tourists by country of residence and mode of travel, June 2024 .....	17
3.3 Annexure C – Number of tourists by country of residence and purpose of visit, June 2024 .....	21
3.4 Annexure D – Number of tourists' difference between Jan – Jun 2023 and Jan – Jun 2024 by country of residence.....	25
3.5 Annexure E – Number of tourists: Quarter 1, 2024 – Quarter 2, 2024 changes by country of residence and month of travel .....	29
3.6 Annexure F – Number of tourists: Quarter 2, 2023 – Quarter 2, 2024 changes by country of residence and month of travel .....	33
3.7 Annexure G – Number of tourists by port of entry and province, June 2024 .....	37

## **Preface**

This monthly statistical release provides information on South African residents and foreign travellers who entered or left South Africa in June 2024. Specific focus is on foreign tourists who entered the country in June 2024. Tourists are classified by region and country of residence. Details of their mode of travel; purpose of visit; age and sex distribution are also provided.

The March, June, September and December releases include summaries of the number of tourists for the current quarter and comparisons with previous periods.

**NB:** Users are advised that some of the ports of entry/exit are missing data (such as Maseru Bridge) this could be due to data capturing system changes being introduced by the Departments of Home Affairs. Stats SA is currently in constant communication with the department and it may be necessary to revise the data once the matter is concluded in the future.

## 1. Highlights of the results

In June 2024, 2 452 882 travellers (arrivals, departures and transits) entered and exited South Africa. They were made up of 793 697 (32,4%) South African residents and 1 659 185 (67,6%) foreign travellers. Foreign arrivals were made up of 23 580 (2,7%) non-visitors and 848 921 (97,3%) visitors. Visitors consisted of 207 637 (24,5%) same-day visitors and 641 284 (75,5%) overnight visitors (tourists).

### Tourists

Overseas tourists constituted 21,0% (134 396) of all tourists. United States of America (USA) (40 597), United Kingdom (UK) (15 601) and Australia (7 967) contributed 47,7% to overseas tourists. Tourists from Southern African Development Community (SADC) countries constituted 77,0% (494 006) of all tourists. Zimbabwe (169 490), Mozambique (123 647) and Eswatini (64 397) contributed 72,4% to SADC tourists. 'Other' African countries (non-SADC) tourists were 1,8% (11 863) of all tourists. Kenya (3 523), Ghana (2 427) and Nigeria (1 436) contributed 62,3% to 'other' African tourists. The country of residence of 1 019 (0,2%) tourists was classified as unspecified.

### Purpose of visit

'Holiday'<sup>1</sup> continues to be the main purpose of visit. About 96,7% of all the tourists were in South Africa for holiday purposes.



**Risenga Maluleke**  
**Statistician-General**

---

<sup>1</sup> The holiday category includes tourists who came for vacation, visiting friends and relatives, shopping and other personal reasons such as attending weddings.

## 2. Key findings

### 2.1 Travellers

#### 2.1.1 Number of travellers

The routine data collected by the Department of Home Affairs’ (DHA) immigration officers at the ports of entry into and out of South Africa shows that a total of 2 452 882 travellers (arrivals, departures and transits) passed through South African ports in June 2024. As presented in Table 1 below, these travellers were made up of 793 697 South African residents and 1 659 185 foreign travellers. A further breakdown of the figures for South African residents indicates that there were 370 442 arrivals, 422 734 departures and 521 travellers in transit. The corresponding volume for foreign arrivals, departures and travellers in transit was 872 501, 749 398 and 37 286 respectively.

A comparison between the movements in May 2024 and June 2024 indicates that the volume of arrivals, departures and transits increased for South African residents but decreased for foreign travellers. For South African residents, the volume of arrivals increased by 18,1% (from 313 600 in May 2024 to 370 442 in June 2024). Departures increased by 26,0% (from 335 511 in May 2024 to 422 734 in June 2024) and transits increased by 4,4% (from 499 in May 2024 to 521 in June 2024). For foreign travellers, arrivals decreased by 1,0% (from 881 544 in May 2024 to 872 501 in June 2024), departures decreased by 4,4% (from 783 999 in May 2024 to 749 398 in June 2024), and transits decreased by 5,1% (from 39 279 in May 2024 to 37 286 in June 2024).

A comparison between the movements in June 2023 and June 2024 indicates that the volume of arrivals, departures and transits increased for both groups of travellers. For South African residents, the volume of arrivals increased by 17,0% (from 316 628 in June 2023 to 370 442 in June 2024), departures increased by 9,8% (from 384 972 in June 2023 to 422 734 in June 2024) and transits increased by 33,9% (from 389 in June 2023 to 521 in June 2024). For foreign travellers, arrivals increased by 2,4% (from 851 647 in June 2023 to 872 501 in June 2024), departures increased by 3,1% (from 727 207 in June 2023 to 749 398 in June 2024) and transits increased by 21,3% (from 30 730 in June 2023 to 37 286 in June 2024).

**Table 1 – Number of South African residents and foreign travellers by travel direction**

Travel Direction	June 2023	May 2024	June 2024	% Change May 2024 – Jun 2024	% Change Jun 2023 – Jun 2024
<b>Total</b>	<b>2 311 573</b>	<b>2 354 432</b>	<b>2 452 882</b>	<b>4,2%</b>	<b>6,1%</b>
<b>South African residents</b>	<b>701 989</b>	<b>649 610</b>	<b>793 697</b>	<b>22,2%</b>	<b>13,1%</b>
Arrivals	316 628	313 600	370 442	18,1%	17,0%
Departures	384 972	335 511	422 734	26,0%	9,8%
Transits	389	499	521	4,4%	33,9%
<b>Foreign travellers</b>	<b>1 609 584</b>	<b>1 704 822</b>	<b>1 659 185</b>	<b>-2,7%</b>	<b>3,1%</b>
Arrivals	851 647	881 544	872 501	-1,0%	2,4%
Departures	727 207	783 999	749 398	-4,4%	3,1%
Transits	30 730	39 279	37 286	-5,1%	21,3%

## 2.1.2 Mode of travel of travellers

Information presented in Table 2 below shows the number of South African residents and foreign travellers by travel direction and mode of travel. In June 2024, road was the most common mode of travel used by 1 603 649 (65,4%) of the 2 452 882 travellers. The total number of air travellers was 842 718 (34,4%). Compared to air and road, a smaller number of travellers, 6 515 (0,3%) used sea into and out of South Africa. Information on arrivals of South African residents shows that 173 959 (47,0%) came by air, 196 445 (53,0%) came by road and 38 (less than 0,1%) arrived by sea. For departures, 214 693 (50,8%) used air, 207 969 (49,2%) used road and 72 (less than 0,1%) left by sea. All travellers in transit, 521 (100,0%) used air.

In the case of foreign travellers, 203 536 (23,3%) arrived by air, 666 184 (76,4%) came by road and 2 781 (0,3%) arrived by sea. When departing South Africa, 212 723 (28,4%) foreign travellers left by air, 533 051 (71,1%) left by road and 3 624 (0,5%) left by sea. Of all travellers in transit, 37 286 (100,0%) used air.

**Table 2 – Number of South African residents and foreign travellers by travel direction and mode of travel**

Travel direction	Total	Air					Road	Sea
		Cape Town	King Shaka	OR Tambo	Other	Total		
<b>Total</b>	<b>2 452 882</b>	<b>195 831</b>	<b>26 941</b>	<b>617 086</b>	<b>2 860</b>	<b>842 718</b>	<b>1 603 649</b>	<b>6 515</b>
<b>South African residents</b>	<b>793 697</b>	<b>96 091</b>	<b>18 956</b>	<b>272 587</b>	<b>1 539</b>	<b>389 173</b>	<b>404 414</b>	<b>110</b>
Arrivals	<b>370 442</b>	40 756	8 811	123 570	822	<b>173 959</b>	196 445	38
Departures	<b>422 734</b>	55 323	10 145	148 508	717	<b>214 693</b>	207 969	72
Transit	<b>521</b>	12	-	509	-	<b>521</b>	-	-
<b>Foreign travellers</b>	<b>1 659 185</b>	<b>99 740</b>	<b>7 985</b>	<b>344 499</b>	<b>1 321</b>	<b>453 545</b>	<b>1 199 235</b>	<b>6 405</b>
Arrivals	<b>872 501</b>	50 025	4 086	148 703	722	<b>203 536</b>	666 184	2 781
Departures	<b>749 398</b>	49 290	3 899	158 935	599	<b>212 723</b>	533 051	3 624
Transit	<b>37 286</b>	425	-	36 861	-	<b>37 286</b>	-	-
<b>Visitors</b>	<b>848 921</b>	<b>47 977</b>	<b>3 470</b>	<b>144 667</b>	<b>382</b>	<b>196 496</b>	<b>651 857</b>	<b>568</b>
Same-day	<b>207 637</b>	1 342	3	18 736	69	<b>20 150</b>	187 481	6
Tourist	<b>641 284</b>	46 635	3 467	125 931	313	<b>176 346</b>	464 376	562

## 2.2 Visitors

Detailed information on the departure of travellers is not available in the movement control system. Data on the purpose of travel and the number of days South African residents intend to spend or spent abroad are not collected by the DHA. It is therefore not possible to categorise South African residents as tourists or non-tourists. However, some data are available on foreign arrivals for this categorisation.

As presented in Table 3 on page 4, in June 2024, 23 580 (2,7%) of foreign arrivals were classified as non-visitors, while 848 921 (97,3%) were classified as visitors. Visitors were categorised into three groups:

- i. Arrivals only – comprising visitors who entered the country in June 2024 but did not depart in June 2024 [300 738 (35,4%)];
- ii. Single trips – visitors who came to South Africa once in June 2024 and left in June 2024 [270 638 (31,9%)];  
and
- iii. Multiple trips – visitors who came to and left South Africa more than once in June 2024 [277 545 (32,7%)].

Visitors were further grouped as same-day visitors and overnight visitors (tourists). In June 2024, there were 207 637 (24,5%) same-day visitors and 641 284 (75,5%) tourists. Between May 2024 and June 2024, the volume of same-day visitors decreased by 0,3% (from 208 316 in May 2024 to 207 637 in June 2024) and that of tourists decreased by 1,3% (from 649 454 in May 2024 to 641 284 in June 2024). Between June 2023 and June 2024, the volume of same-day visitors decreased by 4,4% (from 217 274 in June 2023 to 207 637 in June 2024) whereas that of tourists increased by 5,4% (from 608 319 in June 2023 to 641 284 in June 2024).

Table 2 on page 3 further shows that of the 207 637 same-day visitors, a majority, 187 481 (90,3%) arrived in the country by road, 20 150 (9,7%) arrived by air and six (less than 0,1%) arrived by sea. Information on tourists shows that 464 376 (72,4%) came by road, 176 346 (27,5%) used air and 562 (0,1%) used sea.

**Table 3 – Number of visitors by type of visitor**

Travel Direction	June 2023	May 2024	June 2024	% Change May 2024 – Jun 2024	% Change Jun 2023 – Jun 2024
<b>Foreign arrivals</b>	<b>851 647</b>	<b>881 544</b>	<b>872 501</b>	<b>-1,0%</b>	<b>2,4%</b>
Non-visitors	26 054	23 774	23 580	-0,8%	-9,5%
Visitors	825 593	857 770	848 921	-1,0%	2,8%
<b>Visitors</b>	<b>825 593</b>	<b>857 770</b>	<b>848 921</b>	<b>-1,0%</b>	<b>2,8%</b>
Arrivals only	283 141	291 817	300 738	3,1%	6,2%
Single trips	256 518	287 534	270 638	-5,9%	5,5%
Multiple trips	285 934	278 419	277 545	-0,3%	-2,9%
<b>Visitors</b>	<b>825 593</b>	<b>857 770</b>	<b>848 921</b>	<b>-1,0%</b>	<b>2,8%</b>
Same-day	217 274	208 316	207 637	-0,3%	-4,4%
Overnight (Tourists)	608 319	649 454	641 284	-1,3%	5,4%

## 2.3 Tourists

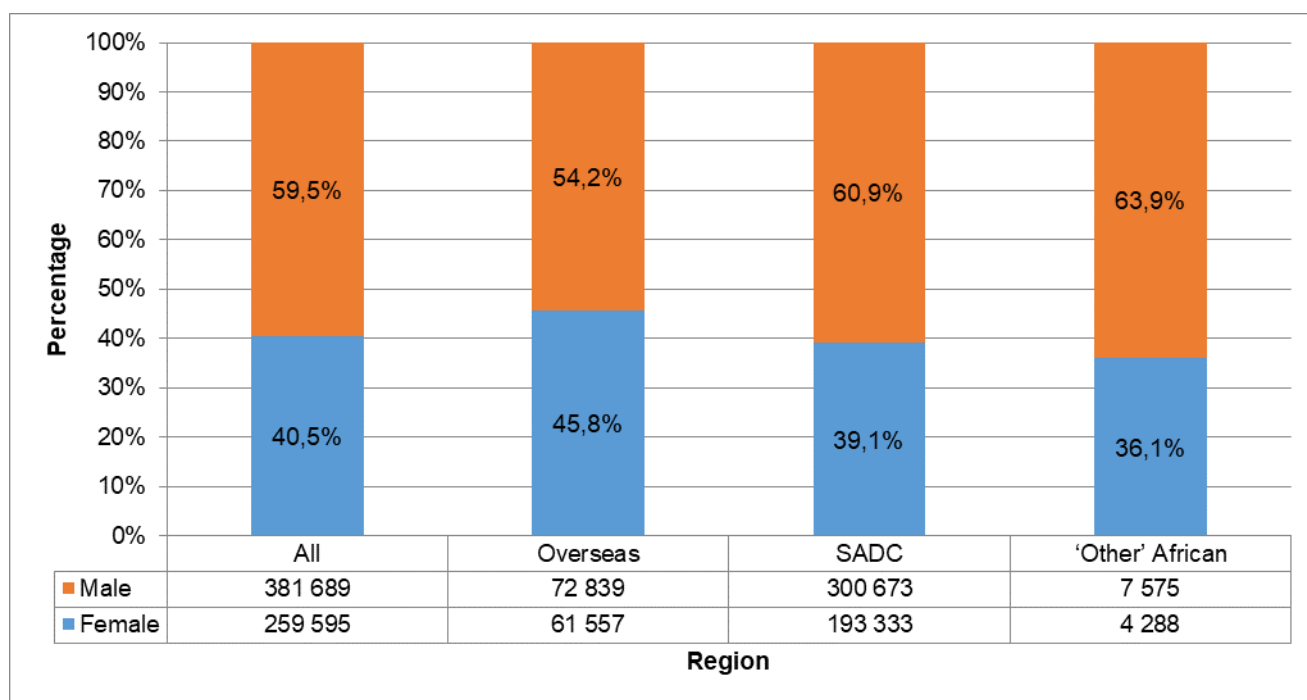
### 2.3.1 Sex and age distribution of tourists

#### Sex

Figure 1 on page 5 shows that there were more male [381 689 (59,5%)] than female [259 595 (40,5%)] tourists. Male tourists constituted the majority of tourists for all three regions, SADC countries [300 673 (60,9%)], overseas countries [72 839 (54,2%)] and 'other' African countries [7 575 (63,9%)]. Similarly, the largest portion of female tourists was from SADC countries [193 333 (39,1%)], followed by overseas countries 61 557 (45,8%) and 'other' African countries 4 288 (36,1%).



**Figure 1 – Percentage distribution of tourists by region of residence and sex, June 2024**

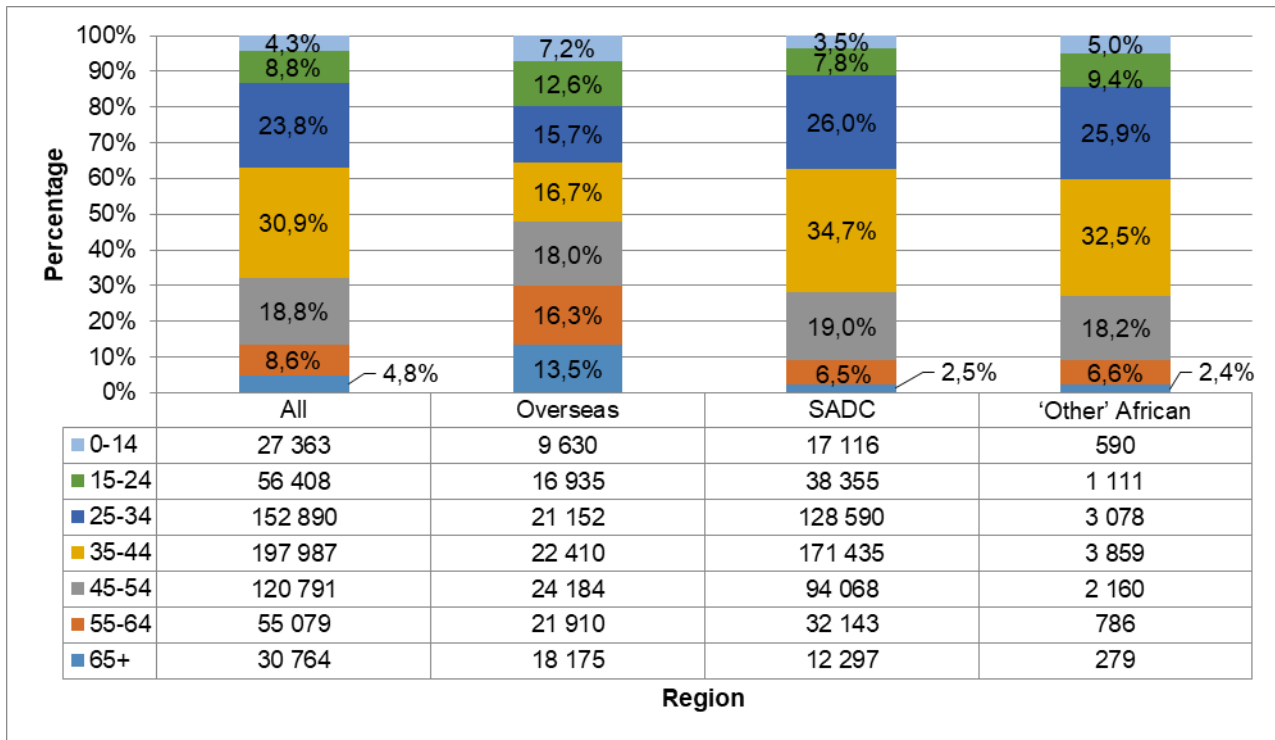


### Age

The age distribution indicates that out of all tourists, [27 363 (4,3%)] were aged younger than 15 years; [56 408 (8,8%)] were aged between 15 and 24 years; [152 890 (23,8%)] were aged between 25 and 34 years; [197 987 (30,9%)] were aged between 35 and 44 years; [120 791 (18,8%)] were aged between 45 and 54 years; [55 079 (8,6%)] were aged between 55 and 64 years; [30 764 (4,8%)] were aged 65 years and older (see Figure 2 on page 6).

Taking the region of residence into consideration, the results show that the highest proportion of tourists from SADC countries [171 435 (34,7%)] and those from 'other' African countries [3 859 (32,5%)] were aged between 35 and 44 years, whereas those from overseas countries [24 184 (18,0%)] were aged between 45 and 54 years. The second highest proportion of tourists from SADC countries [128 590 (26,0%)] and those from 'other' African countries [3 078 (25,9%)] were aged between 25 and 34 years, whereas those from overseas countries [22 410 (16,7%)] were aged between 35 and 44 years. The proportion of tourists aged younger than 15 years was higher among tourists from overseas countries, 7,2% (9 630) compared to those from 'other' African countries, 5,0% (590) and those from SADC countries, 3,5% (17 116). The median ages of tourists from overseas, SADC and 'other' African countries were 43, 38 and 37 years, respectively.

**Figure 2 – Percentage distribution of tourists by region of residence and age, June 2024**

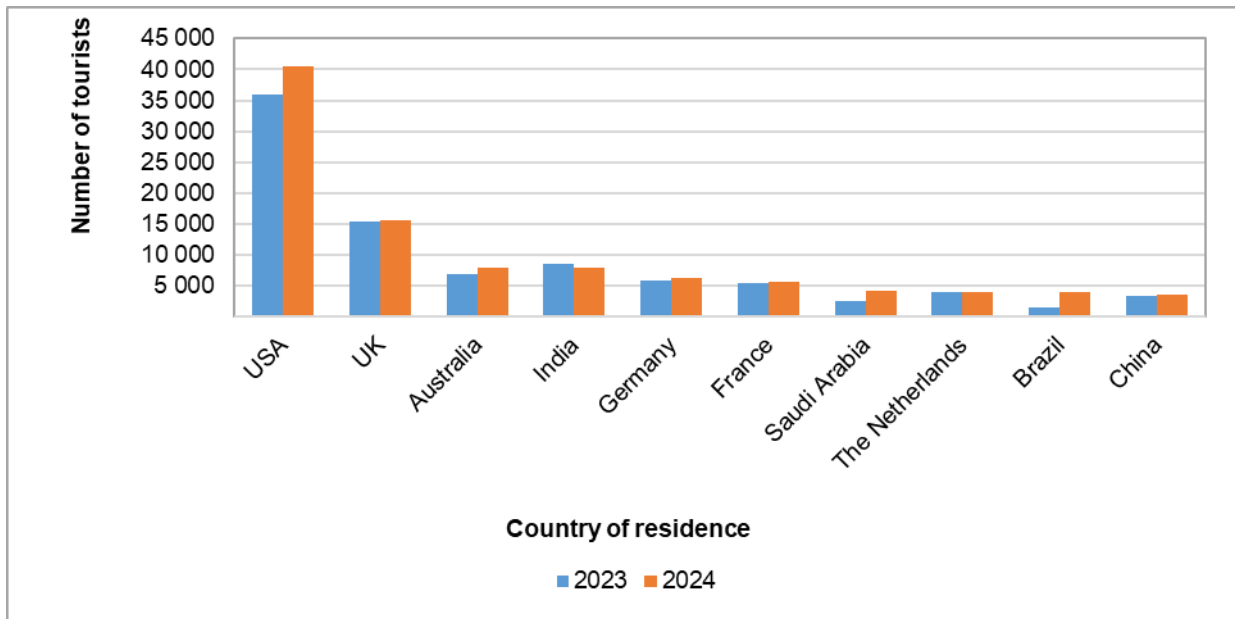


**2.3.2 Regional and national distribution of tourists**

In June 2024, the distribution of overseas tourists was as follows: Europe, 49 749 (37,0%); North America, 43 815 (32,6%); Asia, 18 297 (13,6%); Australasia, 9 586 (7,1%); Middle East, 6 621 (4,9%) and Central and South America, 6 328 (4,7%) (see Table 4 on page 9).

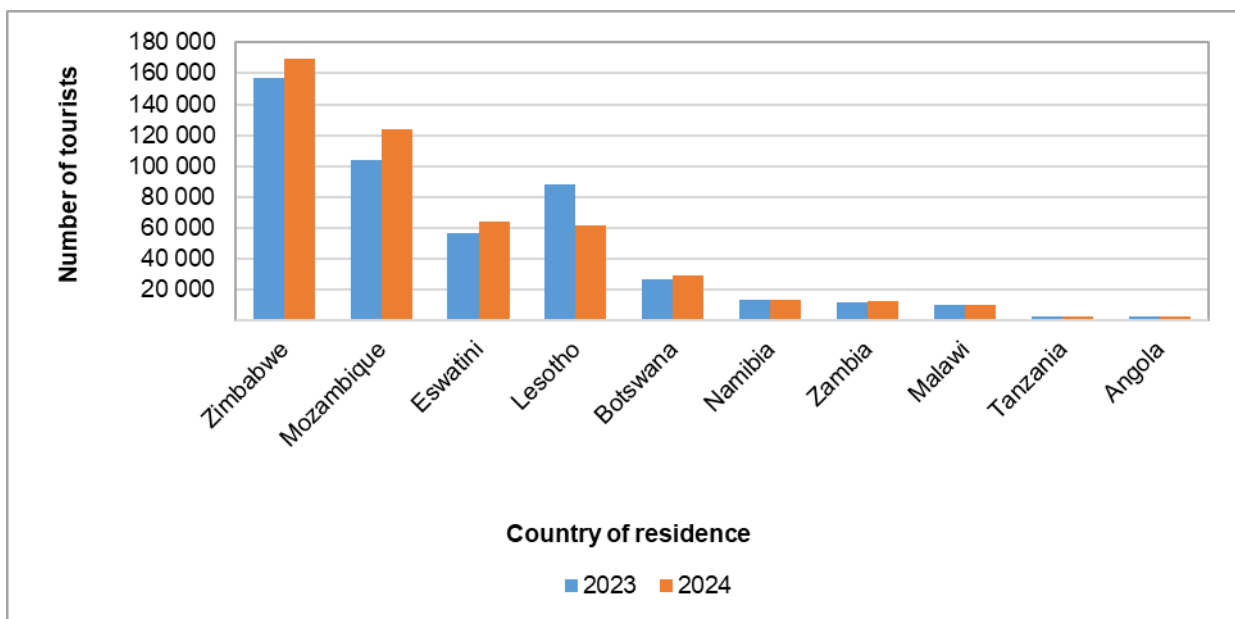
Figure 3 on page 7 indicates that the 10 leading overseas countries in terms of the number of tourists visiting South Africa in June 2024 were: USA, 40 597 (30,2%); UK, 15 601 (11,6%); Australia, 7 967 (5,9%); India, 7 965 (5,9%); Germany, 6 282 (4,7%); France, 5 649 (4,2%); Saudi Arabia, 4 235 (3,2%); The Netherlands, 4 029 (3,0%); Brazil, 3 971 (3,0%) and China, 3 499 (2,6%). Tourists from these 10 countries constituted 74,3% of all tourists from overseas countries. A comparison of movements in the 10 leading countries between June 2023 and June 2024 shows that the number of tourists increased for 9 of 10 leading countries. Brazil had the highest increase of 177,1% (from 1 433 tourists in June 2023 to 3 971 tourists in June 2024).

**Figure 3 – Number of tourists from the 10 leading overseas countries in June 2023 and June 2024**



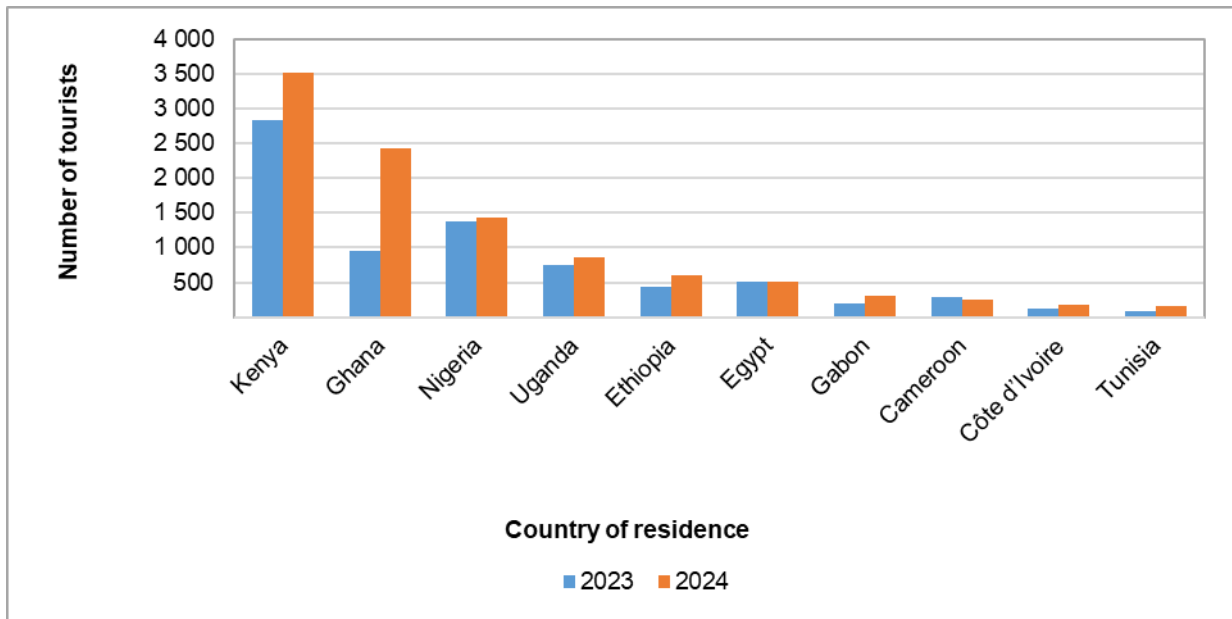
Virtually, most tourists from Africa, 494 006 (97,7%), came from SADC countries. The distribution of the remaining tourists from Africa was as follows: East and Central Africa, 6 102 (1,2%); West Africa, 4 699 (0,9%) and North Africa 1 062 (0,2%). Ten leading SADC countries in terms of the number of tourists visiting South Africa in June 2024 were: Zimbabwe, 169 490 (34,3%); Mozambique, 123 647 (25,0%); Eswatini, 64 397 (13,0%); Lesotho, 61 769 (12,5%); Botswana, 29 416 (6,0%); Namibia, 13 415 (2,7%); Zambia, 12 381 (2,5%); Malawi, 10 407 (2,1%); Tanzania, 2 959 (0,6%) and Angola, 2 508 (0,5%) (see Figure 4 below). Tourists from these 10 countries constituted 99,3% of all tourists from the SADC countries. A comparison of movements in the 10 leading countries between June 2023 and June 2024 shows that the number of tourists increased for 8 of the 10 leading countries. Tanzania showed the highest increase of 21,1% (from 2 444 tourists in June 2023 to 2 959 tourists in June 2024).

**Figure 4 – Number of tourists from the 10 leading SADC countries in June 2023 and June 2024**



The 10 leading countries in terms of the number of tourists visiting South Africa in June 2024 from 'other' African countries, as shown in Figure 5 below, were: Kenya, 3 523 (29,7%); Ghana, 2 427 (20,5%); Nigeria, 1 436 (12,1%); Uganda, 865 (7,3%); Ethiopia, 600 (5,1%); Egypt, 518 (4,4%); Gabon, 315 (2,7%); Cameroon, 251 (2,1%); Côte d'Ivoire, 173 (1,5%) and Tunisia, 166 (1,4%). Tourists from these 10 countries constituted 86,6% of all tourists from 'other' African countries. A comparison between movements in June 2023 and June 2024 shows that the number of tourists increased for 9 of 10 leading countries. Ghana showed the highest increase of 154,4% (from 954 tourists in June 2023 to 2 427 tourists in June 2024).

**Figure 5 – Number of tourists from the 10 leading 'other' African countries in June 2023 and June 2024**



**2.3.3 Purpose of visit of tourists**

Table 4 on page 9, shows the number of tourists by region and sub-region. Detailed data on the country of residence and purpose of visit is presented in Annexure C on pages 21 to 24. It is observed that in June 2024, the majority of tourists, 620 382 (96,7%), were in South Africa for holiday compared to 18 794 (2,9%); 1 853 (0,3%) and 255 (less than 0,1%) who were in South Africa for business, study and medical treatment respectively.

Within the overseas regions, Australasia, 99,4% (9 528) had the highest proportion of tourists who came for holiday followed by North America, 99,1% (43 428); Middle East, 98,5% (6 524); Central and South America, 97,8% (6 191); Europe, 97,1% (48 309) and Asia, 94,1% (17 217).

Asia, 4,9% (898) had the highest proportion of tourists who came to South Africa for business, followed by Europe, 2,4% (1 179); Central and South America, 2,0% (125); Middle East, 0,9% (57); North America, 0,7% (304) and Australasia, 0,5% (51).

Asia, 1,0% (178) had the highest proportion of tourists who came to study, followed by Middle East, 0,6% (39); Europe, 0,5% (226); Central and South America, 0,2% (12); North America, 0,2% (79) and Australasia, less than 0,1% (3).

Europe, 0,1% (35) had the highest proportion of tourists who came for medical treatment. Australasia (4), Asia (4), North America (4) and Middle East (1) had less than 0,1% of medical treatment tourists, whereas Central and South America had none.

Majority of African tourists, 488 207 (96,5%) came to South Africa for holiday. However, the following differences in terms of reasons for travel were observed between tourists from the SADC countries and 'other' African countries, namely:

- Holiday makers constituted 96,6% (477 253) of tourists from SADC countries compared to 92,3% (10 954) from 'other' African countries. Information on the regions of 'other' African countries shows that 93,0% (4 372) of tourists from West Africa were on holiday, followed by tourists from East and Central Africa, 92,7% (5 657) and those from North Africa, 87,1% (925).
- Business persons constituted 3,2% (15 591) of tourists from SADC countries compared to 4,6% (549) from 'other' African countries. North Africa, 8,5% (90) had the highest proportion of tourists who came to South Africa for business purposes, followed by East and Central Africa, 4,9% (299) and West Africa, 3,4% (160).
- Students constituted 0,2% (997) of tourists from SADC countries compared with 2,7% (318) from 'other' African countries. North Africa, 4,0% (43) had the highest proportion of tourists who came to South Africa for study purposes, followed by West Africa, 3,4% (158) and East and Central Africa, 1,9% (117).
- Tourists who came for medical treatment constituted less than 0,1% (165) of tourists from SADC countries, while those from 'other' African countries constituted 0,4% (42). East and Central Africa, 0,5% (29) had the highest proportion of tourists who came for medical treatment, followed by North Africa, 0,4% (4) and West Africa, 0,2% (9).

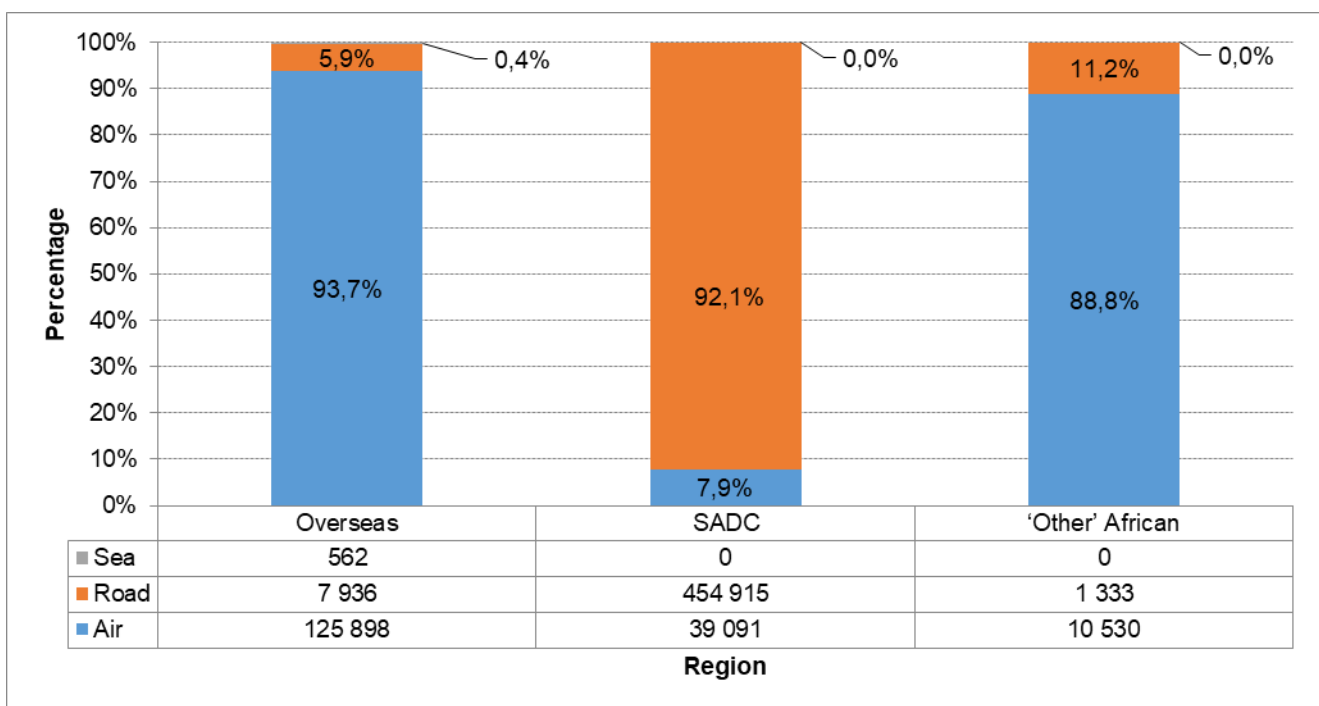
**Table 4 – Number of tourists by region of residence and purpose of visit**

Region of residence	June 2024	Business	Holiday	Study	Medical treatment
<b>Total</b>	<b>641 284</b>	<b>18 794</b>	<b>620 382</b>	<b>1 853</b>	<b>255</b>
<b>Overseas</b>	<b>134 396</b>	<b>2 614</b>	<b>131 197</b>	<b>537</b>	<b>48</b>
Europe	49 749	1 179	48 309	226	35
North America	43 815	304	43 428	79	4
Central and South America	6 328	125	6 191	12	-
Australasia	9 586	51	9 528	3	4
Middle East	6 621	57	6 524	39	1
Asia	18 297	898	17 217	178	4
<b>Africa</b>	<b>505 869</b>	<b>16 140</b>	<b>488 207</b>	<b>1 315</b>	<b>207</b>
<b>SADC</b>	<b>494 006</b>	<b>15 591</b>	<b>477 253</b>	<b>997</b>	<b>165</b>
<b>'Other' African</b>	<b>11 863</b>	<b>549</b>	<b>10 954</b>	<b>318</b>	<b>42</b>
East and Central Africa	6 102	299	5 657	117	29
West Africa	4 699	160	4 372	158	9
North Africa	1 062	90	925	43	4
<b>Unspecified</b>	<b>1 019</b>	<b>40</b>	<b>978</b>	<b>1</b>	<b>-</b>

### 2.3.4 Mode of travel of tourists

Tourists are categorised by their countries of residence and regions. Information on the specific region and country of residence of tourists and the mode of travel used to enter South Africa is provided in Annexure B on pages 17 to 20, whereas the port of entry used by tourists is provided in Annexure G on page 37. As shown in Figure 6 below, 125 898 (93,7%) overseas tourists arrived in the country by air, whilst 7 936 (5,9%) came in by road and 562 (0,4%) arrived by sea. Tourists from the SADC countries, on the other hand, came predominantly by road, 454 915 (92,1%), 39 091 (7,9%) came by air and none arrived by sea. The number of tourists who came into South Africa by air from 'other' African countries was 10 530 (88,8%); while 1 333 (11,2%) used road transport and none preferred sea. Most tourists who arrived by road came through Beit Bridge port (133 520) and Lebombo (128 773). The majority of tourists who came by air entered through OR Tambo International Airport (125 931) and Cape Town International Airport (46 635). Tourists who arrived by sea came through Cape Town Harbour (562).

**Figure 6 – Percentage distribution of tourists by region of residence and mode of travel, June 2024**



### 2.3.5 Quarterly and annual trends

Figures 7, 8, and 9 on pages 11 and 12 show quarterly changes in the number of tourists from overseas, SADC and 'other' African countries, respectively. Figure 7 on page 11, shows that the number of overseas tourists who come to South Africa is generally highest in quarter one and quarter four of each year except the period between 2020 and 2022 where they are highest in quarter one for 2020 and quarter four for 2021 and 2022. Between quarter one and quarter two of 2024 (Annexure E, pages 29 to 30), the number of tourists from overseas decreased by 28,8% (from 621 531 in quarter one to 442 532 in quarter two). A year-on-year comparison between 2023 and 2024 for quarter two (Annexure F, pages 33 to 34) shows that the number of overseas tourists increased by 6,3% (from 416 159 in quarter two of 2023 to 442 532 in quarter two of 2024).

**Figure 7 – Number of tourists from overseas countries by quarter: 2016 – 2024**

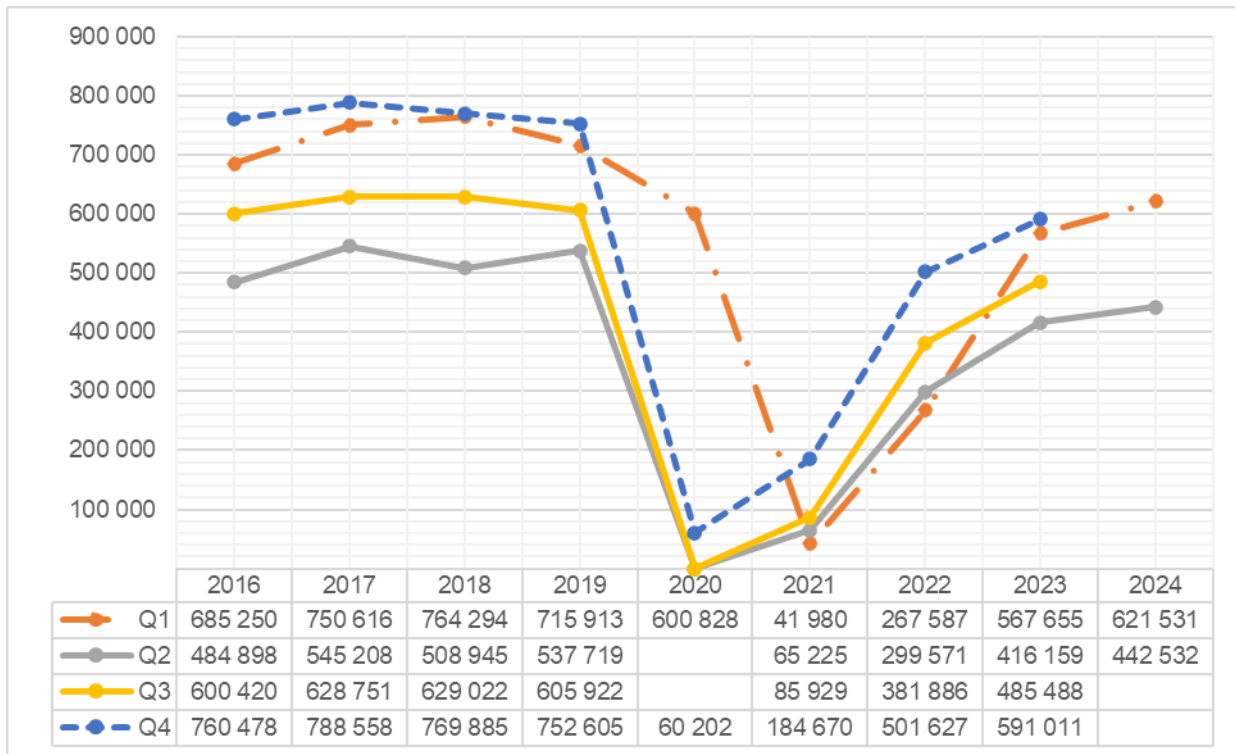


Figure 8 below, shows that the number of SADC tourists are highest in quarter one between 2016 and 2021 except in 2017 and the period between 2021 and 2023 where they are highest in quarter four. The quarter two movement pattern is slightly different between 2021 and 2022 where quarter one is the lowest. The movement pattern is lowest during the period between 2016 and 2019. Between quarter one and quarter two of 2024, the number of tourists decreased by 15,5% (from 1 786 620 in quarter one to 1 508 990 in quarter two) (see Annexure E on pages 30 to 31). Comparisons between the second quarters of 2023 and 2024 show that the number of SADC tourists increased by 0,4% (from 1 503 393 in quarter two of 2023 to 1 508 990 in quarter two of 2024) (see Annexure F on pages 34 to 35).

**Figure 8 – Number of tourists from SADC countries by quarter: 2016 – 2024**

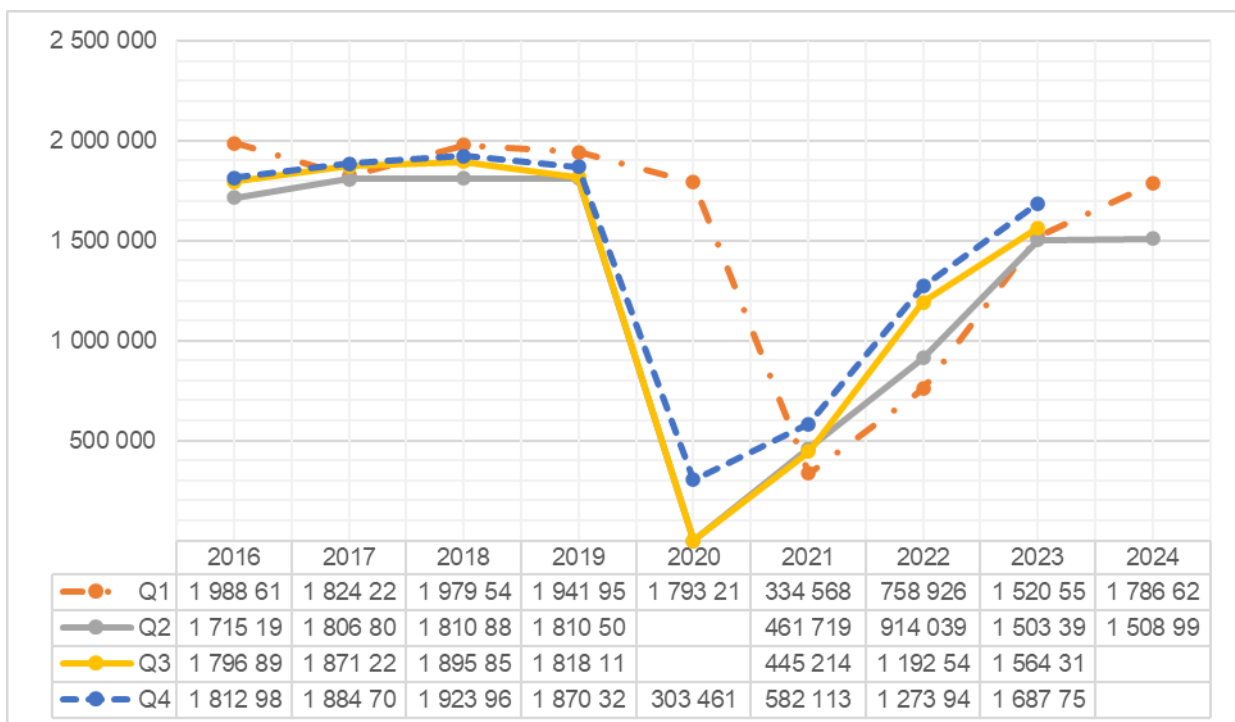
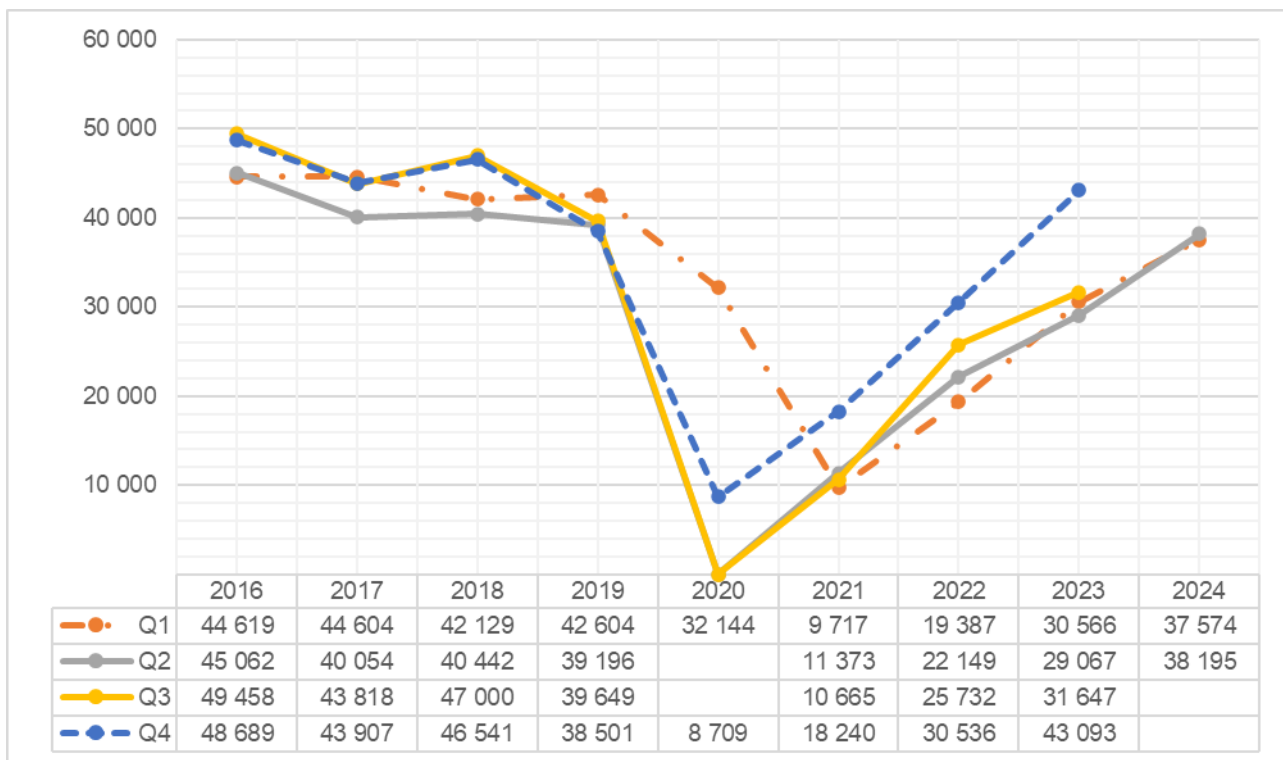


Figure 9 below, shows that the number of tourists from 'other' African countries is highest in quarter four overtime except for the period between 2016 and 2019 where they are on par with quarter three movements. The quarter-two movement pattern is generally the lowest across all years except in 2022. Between quarter one and quarter two of 2024 (see Annexure E on pages 31 to 32), the number of tourists from 'other' African countries increased by 1,7% (from 37 574 in quarter one to 38 195 in quarter two). North Africa increased by 14,3% (from 3 000 in quarter one to 3 428 in quarter two) followed by East and Central Africa which increased by 4,2% (from 18 371 in quarter one to 19 134 in quarter two). On the other hand, West Africa decreased by 3,5% (from 16 203 in quarter one to 15 633 in quarter two). A year-on-year comparison for quarter two (see Annexure F on pages 35 to 36) shows that the number of tourists from 'other' African countries increased by 31,4% (from 29 067 in quarter two of 2023 to 38 195 in quarter two of 2024). West Africa had the largest increase of 63,8% (from 9 545 in quarter two of 2023 to 15 633 in quarter two of 2024), followed by North Africa which increased by 15,8% (from 2 959 in quarter two of 2023 to 3 428 in quarter two of 2024) and East and Central Africa which increased by 15,5% (from 16 563 in quarter two of 2023 to 19 134 in quarter two of 2024).

**Figure 9 – Number of tourists from 'other' African countries by quarter: 2016 – 2024**





### 3. Annexures

#### 3.1 Annexure A – Number of tourists' difference between June 2023 and June 2024 by country of residence

Country of residence	June 2023	June 2024	Difference between June 2023 and June 2024	% change between June 2023 and June 2024
<b>Total</b>	<b>608 319</b>	<b>641 284</b>	<b>32 965</b>	<b>5,4%</b>
<b>Overseas</b>	<b>123 069</b>	<b>134 396</b>	<b>11 327</b>	<b>9,2%</b>
<b>Europe</b>	<b>48 894</b>	<b>49 749</b>	<b>855</b>	<b>1,7%</b>
Belgium	1 481	1 677	196	13,2%
France	5 450	5 649	199	3,7%
Germany	5 895	6 282	387	6,6%
Ireland	1 643	1 685	42	2,6%
Italy	2 956	3 021	65	2,2%
Poland	494	601	107	21,7%
Portugal	1 334	1 261	-73	-5,5%
Russian Federation	1 469	1 404	-65	-4,4%
Spain	2 093	2 175	82	3,9%
Sweden	806	691	-115	-14,3%
Switzerland	1 158	1 225	67	5,8%
The Netherlands	4 031	4 029	-2	0,0%
Turkey	967	1 018	51	5,3%
UK	15 461	15 601	140	0,9%
Other	3 656	3 430	-226	-6,2%
<b>North America</b>	<b>39 101</b>	<b>43 815</b>	<b>4 714</b>	<b>12,1%</b>
Canada	3 069	3 218	149	4,9%
USA	36 032	40 597	4 565	12,7%
<b>Central and South America</b>	<b>2 852</b>	<b>6 328</b>	<b>3 476</b>	<b>121,9%</b>
Argentina	251	487	236	94,0%
Brazil	1 433	3 971	2 538	177,1%
Mexico	335	380	45	13,4%
Other	833	1 490	657	78,9%

**Annexure A – Number of tourists' difference between June 2023 and June 2024 by country of residence (continued)**

Country of residence	June 2023	June 2024	Difference between June 2023 and June 2024	% change between June 2023 and June 2024
<b>Australasia</b>	<b>8 422</b>	<b>9 586</b>	<b>1 164</b>	<b>13,8%</b>
Australia	6 926	7 967	1 041	15,0%
New Zealand	1 454	1 541	87	6,0%
Other	42	78	36	85,7%
<b>Middle East</b>	<b>5 388</b>	<b>6 621</b>	<b>1 233</b>	<b>22,9%</b>
Israel	1 065	359	-706	-66,3%
Saudi Arabia	2 555	4 235	1 680	65,8%
United Arab Emirates	733	829	96	13,1%
Other	1 035	1 198	163	15,7%
<b>Asia</b>	<b>18 412</b>	<b>18 297</b>	<b>-115</b>	<b>-0,6%</b>
Bangladesh	531	375	-156	-29,4%
China	3 281	3 499	218	6,6%
India	8 495	7 965	-530	-6,2%
Japan	1 033	1 207	174	16,8%
Malaysia	541	466	-75	-13,9%
Pakistan	955	1 082	127	13,3%
Philippines	600	590	-10	-1,7%
Singapore	969	1 197	228	23,5%
South Korea	735	778	43	5,9%
Thailand	387	360	-27	-7,0%
Other	885	778	-107	-12,1%
<b>Africa</b>	<b>484 306</b>	<b>505 869</b>	<b>21 563</b>	<b>4,5%</b>
<b>SADC</b>	<b>475 358</b>	<b>494 006</b>	<b>18 648</b>	<b>3,9%</b>
Angola	2 454	2 508	54	2,2%
Botswana	26 686	29 416	2 730	10,2%
DRC	1 425	2 044	619	43,4%
Eswatini	56 512	64 397	7 885	14,0%

**Annexure A – Number of tourists' difference between June 2023 and June 2024 by country of residence (continued)**

Country of residence	June 2023	June 2024	Difference between June 2023 and June 2024	% change between June 2023 and June 2024
Lesotho	88 025	61 769	-26 256	-29,8%
Madagascar	241	360	119	49,4%
Malawi	10 502	10 407	-95	-0,9%
Mauritius	1 088	1 007	-81	-7,4%
Mozambique	104 152	123 647	19 495	18,7%
Namibia	13 328	13 415	87	0,7%
Seychelles	185	206	21	11,4%
Tanzania	2 444	2 959	515	21,1%
Zambia	11 616	12 381	765	6,6%
Zimbabwe	156 700	169 490	12 790	8,2%
<b>'Other' African</b>	<b>8 948</b>	<b>11 863</b>	<b>2 915</b>	<b>32,6%</b>
<b>East and Central Africa</b>	<b>4 928</b>	<b>6 102</b>	<b>1 174</b>	<b>23,8%</b>
Burundi	60	86	26	43,3%
Cameroon	285	251	-34	-11,9%
Central African Republic	10	9	-1	-10,0%
Chad	21	36	15	71,4%
Comoros	22	61	39	177,3%
Congo	99	124	25	25,3%
Djibouti	3	11	8	266,7%
Equatorial Guinea	8	22	14	175,0%
Eritrea	28	42	14	50,0%
Ethiopia	442	600	158	35,7%
Gabon	205	315	110	53,7%
Kenya	2 844	3 523	679	23,9%
Réunion	5	-	-5	-100,0%
Rwanda	74	95	21	28,4%
São Tomé and Príncipe	5	10	5	100,0%
Somalia	62	52	-10	-16,1%
Uganda	755	865	110	14,6%

**Annexure A – Number of tourists' difference between June 2023 and June 2024 by country of residence (concluded)**

Country of residence	June 2023	June 2024	Difference between June 2023 and June 2024	% change between June 2023 and June 2024
<b>West Africa</b>	<b>3 057</b>	<b>4 699</b>	<b>1 642</b>	<b>53,7%</b>
Benin	115	153	38	33,0%
Burkina Faso	33	43	10	30,3%
Cape Verde Island	12	24	12	100,0%
Côte d'Ivoire	132	173	41	31,1%
Gambia	16	23	7	43,8%
Ghana	954	2 427	1 473	154,4%
Guinea	102	85	-17	-16,7%
Guinea-Bissau	5	4	-1	-20,0%
Liberia	37	52	15	40,5%
Mali	68	84	16	23,5%
Mauritania	13	16	3	23,1%
Niger	16	23	7	43,8%
Nigeria	1 380	1 436	56	4,1%
Saint Helena	5	2	-3	-60,0%
Senegal	74	88	14	18,9%
Sierra Leone	33	44	11	33,3%
Togo	62	22	-40	-64,5%
<b>North Africa</b>	<b>963</b>	<b>1 062</b>	<b>99</b>	<b>10,3%</b>
Algeria	56	63	7	12,5%
Egypt	505	518	13	2,6%
Libya	40	40	-	0,0%
Morocco	171	120	-51	-29,8%
South Sudan	60	85	25	41,7%
The Sudan	46	68	22	47,8%
Tunisia	85	166	81	95,3%
Western Sahara	-	2	2	-
<b>Unspecified</b>	<b>944</b>	<b>1 019</b>	<b>75</b>	<b>7,9%</b>

**3.2 Annexure B – Number of tourists by country of residence and mode of travel, June 2024**

Country of residence	June 2024	Air					Road	Sea
		Cape Town	King Shaka	OR Tambo	Other	Total		
<b>Total</b>	<b>641 284</b>	<b>46 635</b>	<b>3 467</b>	<b>125 931</b>	<b>313</b>	<b>176 346</b>	<b>464 376</b>	<b>562</b>
<b>Overseas</b>	<b>134 396</b>	<b>41 411</b>	<b>2 863</b>	<b>81 473</b>	<b>151</b>	<b>125 898</b>	<b>7 936</b>	<b>562</b>
<b>Europe</b>	<b>49 749</b>	<b>13 721</b>	<b>1 428</b>	<b>30 267</b>	<b>69</b>	<b>45 485</b>	<b>3 824</b>	<b>440</b>
Belgium	1 677	431	21	1 061	5	1 518	159	-
France	5 649	1 112	38	3 949	13	5 112	537	-
Germany	6 282	1 744	153	3 408	6	5 311	572	399
Ireland	1 685	730	67	828	3	1 628	57	-
Italy	3 021	1 194	61	1 616	3	2 874	146	1
Poland	601	136	30	403	1	570	30	1
Portugal	1 261	214	25	621	-	860	401	-
Russian Federation	1 404	473	74	750	-	1 297	107	-
Spain	2 175	584	42	1 400	1	2 027	148	-
Sweden	691	150	21	473	-	644	47	-
Switzerland	1 225	300	18	760	-	1 078	131	16
The Netherlands	4 029	1 172	76	2 261	4	3 513	512	4
Turkey	1 018	412	26	521	-	959	59	-
UK	15 601	4 195	637	10 033	27	14 892	706	3
Other	3 430	874	139	2 183	6	3 202	212	16
<b>North America</b>	<b>43 815</b>	<b>14 921</b>	<b>308</b>	<b>26 955</b>	<b>62</b>	<b>42 246</b>	<b>1 569</b>	<b>-</b>
Canada	3 218	1 012	62	1 961	4	3 039	179	-
USA	40 597	13 909	246	24 994	58	39 207	1 390	-
<b>Central and South America</b>	<b>6 328</b>	<b>1 678</b>	<b>40</b>	<b>4 284</b>	<b>1</b>	<b>6 003</b>	<b>324</b>	<b>1</b>
Argentina	487	143	9	312	-	464	23	-
Brazil	3 971	841	12	2 924	-	3 777	193	1
Mexico	380	152	1	224	-	377	3	-
Other	1 490	542	18	824	1	1 385	105	-

**Annexure B – Number of tourists by country of residence and mode of travel, June 2024 (continued)**

Country of residence	June 2024	Air					Road	Sea
		Cape Town	King Shaka	OR Tambo	Other	Total		
<b>Australasia</b>	<b>9 586</b>	<b>1 600</b>	<b>192</b>	<b>7 335</b>	<b>12</b>	<b>9 139</b>	<b>445</b>	<b>2</b>
Australia	7 967	1 241	80	6 236	12	7 569	396	2
New Zealand	1 541	321	83	1 089	-	1 493	48	-
Other	78	38	29	10	-	77	1	-
<b>Middle East</b>	<b>6 621</b>	<b>4 831</b>	<b>36</b>	<b>1 671</b>	<b>1</b>	<b>6 539</b>	<b>82</b>	<b>-</b>
Israel	359	69	8	255	-	332	27	-
Saudi Arabia	4 235	3 619	4	596	-	4 219	16	-
United Arab Emirates	829	656	7	164	1	828	1	-
Other	1 198	487	17	656	-	1 160	38	-
<b>Asia</b>	<b>18 297</b>	<b>4 660</b>	<b>859</b>	<b>10 961</b>	<b>6</b>	<b>16 486</b>	<b>1 692</b>	<b>119</b>
Bangladesh	375	56	25	199	-	280	95	-
China	3 499	636	42	2 540	2	3 220	166	113
India	7 965	2 301	493	4 357	-	7 151	814	-
Japan	1 207	273	71	801	-	1 145	62	-
Malaysia	466	144	36	266	-	446	20	-
Pakistan	1 082	175	63	550	-	788	294	-
Philippines	590	182	57	340	-	579	10	1
Singapore	1 197	438	10	737	-	1 185	12	-
South Korea	778	162	30	476	-	668	110	-
Thailand	360	134	17	192	-	343	16	1
Other	778	159	15	503	4	681	93	4
<b>Africa</b>	<b>505 869</b>	<b>5 202</b>	<b>596</b>	<b>43 663</b>	<b>160</b>	<b>49 621</b>	<b>456 248</b>	<b>-</b>
<b>SADC</b>	<b>494 006</b>	<b>3 708</b>	<b>553</b>	<b>34 694</b>	<b>136</b>	<b>39 091</b>	<b>454 915</b>	<b>-</b>
Angola	2 508	621	-	1 287	13	1 921	587	-
Botswana	29 416	207	-	2 294	15	2 516	26 900	-
DRC	2 044	66	3	1 715	25	1 809	235	-
Eswatini	64 397	90	87	945	19	1 141	63 256	-

**Annexure B – Number of tourists by country of residence and mode of travel, June 2024 (continued)**

Country of residence	June 2024	Air					Road	Sea
		Cape Town	King Shaka	OR Tambo	Other	Total		
Lesotho	61 769	7	3	730	1	741	61 028	-
Madagascar	360	7	-	312	9	328	32	-
Malawi	10 407	30	5	1 588	1	1 624	8 783	-
Mauritius	1 007	164	6	805	-	975	32	-
Mozambique	123 647	233	6	3 406	3	3 648	119 999	-
Namibia	13 415	1 308	-	2 721	5	4 034	9 381	-
Seychelles	206	2	2	198	-	202	4	-
Tanzania	2 959	166	1	1 521	17	1 705	1 254	-
Zambia	12 381	115	64	3 371	5	3 555	8 826	-
Zimbabwe	169 490	692	376	13 801	23	14 892	154 598	-
<b>'Other' African</b>	<b>11 863</b>	<b>1 494</b>	<b>43</b>	<b>8 969</b>	<b>24</b>	<b>10 530</b>	<b>1 333</b>	<b>-</b>
<b>East and Central Africa</b>	<b>6 102</b>	<b>829</b>	<b>8</b>	<b>4 530</b>	<b>15</b>	<b>5 382</b>	<b>720</b>	<b>-</b>
Burundi	86	12	-	69	-	81	5	-
Cameroon	251	32	-	212	1	245	6	-
Central African Republic	9	-	-	8	1	9	-	-
Chad	36	4	-	32	-	36	-	-
Comoros	61	2	-	59	-	61	-	-
Congo	124	40	-	78	3	121	3	-
Djibouti	11	-	-	11	-	11	-	-
Equatorial Guinea	22	-	-	19	-	19	3	-
Eritrea	42	2	2	34	-	38	4	-
Ethiopia	600	76	-	450	-	526	74	-
Gabon	315	28	-	278	-	306	9	-
Kenya	3 523	512	5	2 469	10	2 996	527	-
Rwanda	95	7	-	74	-	81	14	-
São Tomé and Príncipe	10	2	-	7	-	9	1	-
Somalia	52	8	-	33	-	41	11	-
Uganda	865	104	1	697	-	802	63	-

**Annexure B – Number of tourists by country of residence and mode of travel, June 2024 (concluded)**

Country of residence	June 2024	Air					Road	Sea
		Cape Town	King Shaka	OR Tambo	Other	Total		
<b>West Africa</b>	<b>4 699</b>	<b>533</b>	<b>9</b>	<b>3 582</b>	<b>9</b>	<b>4 133</b>	<b>566</b>	<b>-</b>
Benin	153	18	-	127	-	145	8	-
Burkina Faso	43	4	-	38	-	42	1	-
Cape Verde Island	24	6	-	15	-	21	3	-
Côte d'Ivoire	173	26	-	141	-	167	6	-
Gambia	23	3	-	19	-	22	1	-
Ghana	2 427	231	5	1 873	-	2 109	318	-
Guinea	85	5	-	39	-	44	41	-
Guinea-Bissau	4	-	-	3	-	3	1	-
Liberia	52	2	-	49	-	51	1	-
Mali	84	6	-	56	-	62	22	-
Mauritania	16	1	-	15	-	16	-	-
Niger	23	1	-	22	-	23	-	-
Nigeria	1 436	212	2	1 058	8	1 280	156	-
Saint Helena	2	-	-	2	-	2	-	-
Senegal	88	12	2	73	-	87	1	-
Sierra Leone	44	4	-	33	-	37	7	-
Togo	22	2	-	19	1	22	-	-
<b>North Africa</b>	<b>1 062</b>	<b>132</b>	<b>26</b>	<b>857</b>	<b>-</b>	<b>1 015</b>	<b>47</b>	<b>-</b>
Algeria	63	7	2	47	-	56	7	-
Egypt	518	58	7	434	-	499	19	-
Libya	40	2	2	35	-	39	1	-
Morocco	120	23	9	83	-	115	5	-
South Sudan	85	7	-	76	-	83	2	-
The Sudan	68	20	1	34	-	55	13	-
Tunisia	166	15	5	146	-	166	-	-
Western Sahara	2	-	-	2	-	2	-	-
<b>Unspecified</b>	<b>1 019</b>	<b>22</b>	<b>8</b>	<b>795</b>	<b>2</b>	<b>827</b>	<b>192</b>	<b>-</b>



**3.3 Annexure C – Number of tourists by country of residence and purpose of visit, June 2024**

Country of residence	June 2024	Purpose of visit			
		Business	Holiday	Study	Medical Treatment
<b>Total</b>	<b>641 284</b>	<b>18 794</b>	<b>620 382</b>	<b>1 853</b>	<b>255</b>
<b>Overseas</b>	<b>134 396</b>	<b>2 614</b>	<b>131 197</b>	<b>537</b>	<b>48</b>
<b>Europe</b>	<b>49 749</b>	<b>1 179</b>	<b>48 309</b>	<b>226</b>	<b>35</b>
Belgium	1 677	27	1 631	17	2
France	5 649	116	5 485	47	1
Germany	6 282	146	6 075	59	2
Ireland	1 685	25	1 656	2	2
Italy	3 021	68	2 943	9	1
Portugal	1 261	16	1 244	1	-
Russian Federation	1 404	31	1 371	2	-
Spain	2 175	48	2 114	12	1
Switzerland	1 225	11	1 207	6	1
The Netherlands	4 029	79	3 923	15	12
Turkey	1 018	34	981	3	-
UK	15 601	439	15 129	22	11
Other	4 722	139	4 550	31	2
<b>North America</b>	<b>43 815</b>	<b>304</b>	<b>43 428</b>	<b>79</b>	<b>4</b>
Canada	3 218	34	3 182	2	-
USA	40 597	270	40 246	77	4
<b>Central and South America</b>	<b>6 328</b>	<b>125</b>	<b>6 191</b>	<b>12</b>	<b>-</b>
Argentina	487	6	481	-	-
Brazil	3 971	39	3 925	7	-
Mexico	380	3	375	2	-
Other	1 490	77	1 410	3	-

**Annexure C – Number of tourists by country of residence and purpose of visit, June 2024 (continued)**

Country of residence	June 2024	Purpose of visit			
		Business	Holiday	Study	Medical Treatment
<b>Australasia</b>	<b>9 586</b>	<b>51</b>	<b>9 528</b>	<b>3</b>	<b>4</b>
Australia	7 967	33	7 927	3	4
New Zealand	1 541	10	1 531	-	-
Other	78	8	70	-	-
<b>Middle East</b>	<b>6 621</b>	<b>57</b>	<b>6 524</b>	<b>39</b>	<b>1</b>
Israel	359	12	347	-	-
Saudi Arabia	4 235	9	4 202	24	-
United Arab Emirates	829	6	821	1	1
Other	1 198	30	1 154	14	-
<b>Asia</b>	<b>18 297</b>	<b>898</b>	<b>17 217</b>	<b>178</b>	<b>4</b>
Bangladesh	375	20	347	8	-
China	3 499	302	3 176	19	2
India	7 965	396	7 473	95	1
Japan	1 207	58	1 146	3	-
Malaysia	466	9	453	4	-
Pakistan	1 082	25	1 028	29	-
Philippines	590	25	562	2	1
Singapore	1 197	11	1 186	-	-
South Korea	778	13	760	5	-
Thailand	360	2	354	4	-
Other	778	37	732	9	-
<b>Africa</b>	<b>505 869</b>	<b>16 140</b>	<b>488 207</b>	<b>1 315</b>	<b>207</b>
<b>SADC</b>	<b>494 006</b>	<b>15 591</b>	<b>477 253</b>	<b>997</b>	<b>165</b>
Angola	2 508	50	2 384	55	19
Botswana	29 416	689	28 565	149	13
DRC	2 044	32	1 876	75	61
Eswatini	64 397	1 418	62 827	148	4

**Annexure C – Number of tourists by country of residence and purpose of visit, June 2024 (continued)**

Country of residence	June 2024	Purpose of visit			
		Business	Holiday	Study	Medical Treatment
Lesotho	61 769	262	61 472	35	-
Madagascar	360	4	354	2	-
Malawi	10 407	239	10 143	22	3
Mauritius	1 007	10	986	10	1
Mozambique	123 647	2 827	120 770	37	13
Namibia	13 415	3 257	10 030	122	6
Seychelles	206	2	203	1	-
Tanzania	2 959	89	2 841	23	6
Zambia	12 381	3 286	9 058	28	9
Zimbabwe	169 490	3 426	165 744	290	30
<b>'Other' African</b>	<b>11 863</b>	<b>549</b>	<b>10 954</b>	<b>318</b>	<b>42</b>
<b>East and Central Africa</b>	<b>6 102</b>	<b>299</b>	<b>5 657</b>	<b>117</b>	<b>29</b>
Burundi	86	10	68	5	3
Cameroon	251	18	206	18	9
Central African Republic	9	1	5	-	3
Chad	36	1	28	6	1
Comoros	61	4	57	-	-
Congo	124	2	102	15	5
Djibouti	11	-	11	-	-
Equatorial Guinea	22	1	20	1	-
Eritrea	42	-	42	-	-
Ethiopia	600	43	544	12	1
Gabon	315	-	306	9	-
Kenya	3 523	143	3 352	26	2
Rwanda	95	3	91	1	-
São Tomé and Príncipe	10	-	10	-	-
Somalia	52	3	45	3	1
Uganda	865	70	770	21	4

**Annexure C – Number of tourists by country of residence and purpose of visit, June 2024 (concluded)**

Country of residence	June 2024	Purpose of visit			
		Business	Holiday	Study	Medical Treatment
<b>West Africa</b>	<b>4 699</b>	<b>160</b>	<b>4 372</b>	<b>158</b>	<b>9</b>
Benin	153	3	146	2	2
Burkina Faso	43	4	37	2	-
Cape Verde Island	24	1	23	-	-
Côte d'Ivoire	173	14	157	2	-
Gambia	23	2	19	2	-
Ghana	2 427	48	2 361	15	3
Guinea	85	2	79	3	1
Guinea-Bissau	4	1	3	-	-
Liberia	52	-	52	-	-
Mali	84	4	78	2	-
Mauritania	16	1	15	-	-
Niger	23	4	19	-	-
Nigeria	1 436	63	1 247	124	2
Saint Helena	2	-	2	-	-
Senegal	88	8	78	2	-
Sierra Leone	44	2	38	3	1
Togo	22	3	18	1	-
<b>North Africa</b>	<b>1 062</b>	<b>90</b>	<b>925</b>	<b>43</b>	<b>4</b>
Algeria	63	10	53	-	-
Egypt	518	48	451	19	-
Libya	40	1	29	10	-
Morocco	120	13	107	-	-
South Sudan	85	9	69	3	4
The Sudan	68	2	56	10	-
Tunisia	166	7	158	1	-
Western Sahara	2	-	2	-	-
<b>Unspecified</b>	<b>1 019</b>	<b>40</b>	<b>978</b>	<b>1</b>	<b>-</b>

### 3.4 Annexure D – Number of tourists' difference between Jan – Jun 2023 and Jan – Jun 2024 by country of residence

Country of residence	Jan – Jun 2023	Jan – Jun 2024	Difference between Jan – Jun 2023 and Jan – Jun 2024	% change between Jan – Jun 2023 and Jan – Jun 2024
<b>Total</b>	<b>4 073 700</b>	<b>4 441 247</b>	<b>367 547</b>	<b>9,0%</b>
<b>Overseas</b>	<b>983 814</b>	<b>1 064 063</b>	<b>80 249</b>	<b>8,2%</b>
<b>Europe</b>	<b>594 388</b>	<b>627 734</b>	<b>33 346</b>	<b>5,6%</b>
Austria	10 079	10 507	428	4,2%
Belgium	19 087	20 472	1 385	7,3%
Denmark	9 687	9 663	-24	-0,2%
France	56 413	62 838	6 425	11,4%
Germany	122 797	128 987	6 190	5,0%
Ireland	14 242	14 919	677	4,8%
Italy	18 680	19 991	1 311	7,0%
Portugal	10 190	10 805	615	6,0%
Russian Federation	13 806	15 324	1 518	11,0%
Spain	11 798	12 931	1 133	9,6%
Sweden	12 660	13 124	464	3,7%
Switzerland	19 832	20 327	495	2,5%
The Netherlands	54 083	58 909	4 826	8,9%
UK	179 693	183 995	4 302	2,4%
Other	41 341	44 942	3 601	8,7%
<b>North America</b>	<b>201 386</b>	<b>216 555</b>	<b>15 169</b>	<b>7,5%</b>
Canada	26 983	28 864	1 881	7,0%
USA	174 403	187 691	13 288	7,6%
<b>Central and South America</b>	<b>19 065</b>	<b>36 699</b>	<b>17 634</b>	<b>92,5%</b>
Argentina	1 877	2 972	1 095	58,3%
Brazil	9 118	23 969	14 851	162,9%
Mexico	2 192	2 314	122	5,6%
Other	5 878	7 444	1 566	26,6%

**Annexure D – Number of tourists' difference between Jan – Jun 2023 and Jan – Jun 2024 by country of residence (continued)**

Country of residence	Jan – Jun 2023	Jan – Jun 2024	Difference between Jan – Jun 2023 and Jan – Jun 2024	% change between Jan – Jun 2023 and Jan – Jun 2024
<b>Australasia</b>	<b>50 882</b>	<b>54 831</b>	<b>3 949</b>	<b>7,8%</b>
Australia	41 620	45 562	3 942	9,5%
New Zealand	9 120	9 116	-4	0,0%
Other	142	153	11	7,7%
<b>Middle East</b>	<b>22 497</b>	<b>20 687</b>	<b>-1 810</b>	<b>-8,0%</b>
Iran	1 294	1 785	491	37,9%
Israel	10 062	3 792	-6 270	-62,3%
Saudi Arabia	5 493	8 739	3 246	59,1%
Other	5 648	6 371	723	12,8%
<b>Asia</b>	<b>95 596</b>	<b>107 557</b>	<b>11 961</b>	<b>12,5%</b>
Bangladesh	3 995	3 031	-964	-24,1%
China	16 215	20 640	4 425	27,3%
India	41 668	42 033	365	0,9%
Japan	5 356	8 878	3 522	65,8%
Malaysia	2 459	2 910	451	18,3%
Pakistan	6 312	6 468	156	2,5%
Philippines	2 796	3 114	318	11,4%
Singapore	3 416	4 698	1 282	37,5%
South Korea	4 719	6 770	2 051	43,5%
Thailand	2 347	2 657	310	13,2%
Other	6 313	6 358	45	0,7%
<b>Africa</b>	<b>3 083 583</b>	<b>3 371 379</b>	<b>287 796</b>	<b>9,3%</b>
<b>SADC</b>	<b>3 023 950</b>	<b>3 295 610</b>	<b>271 660</b>	<b>9,0%</b>
Angola	19 600	18 507	-1 093	-5,6%
Botswana	157 807	178 891	21 084	13,4%
DRC	9 236	13 217	3 981	43,1%
Eswatini	333 644	390 161	56 517	16,9%

**Annexure D – Number of tourists' difference between Jan – Jun 2023 and Jan – Jun 2024 by country of residence (continued)**

Country of residence	Jan – Jun 2023	Jan – Jun 2024	Difference between Jan – Jun 2023 and Jan – Jun 2024	% change between Jan – Jun 2023 and Jan – Jun 2024
Lesotho	609 543	506 449	-103 094	-16,9%
Madagascar	1 610	2 166	556	34,5%
Malawi	58 241	68 608	10 367	17,8%
Mauritius	7 799	8 491	692	8,9%
Mozambique	657 830	786 425	128 595	19,5%
Namibia	76 004	77 431	1 427	1,9%
Seychelles	2 197	2 090	-107	-4,9%
Tanzania	15 913	17 434	1 521	9,6%
Zambia	65 757	75 436	9 679	14,7%
Zimbabwe	1 008 769	1 150 304	141 535	14,0%
<b>'Other' African</b>	<b>59 633</b>	<b>75 769</b>	<b>16 136</b>	<b>27,1%</b>
<b>East and Central Africa</b>	<b>34 291</b>	<b>37 505</b>	<b>3 214</b>	<b>9,4%</b>
Burundi	455	624	169	37,1%
Cameroon	2 032	1 959	-73	-3,6%
Central African Republic	104	97	-7	-6,7%
Chad	189	195	6	3,2%
Comoros	142	154	12	8,5%
Congo	728	693	-35	-4,8%
Djibouti	48	47	-1	-2,1%
Equatorial Guinea	95	146	51	53,7%
Eritrea	176	240	64	36,4%
Ethiopia	2 828	3 543	715	25,3%
Gabon	1 604	1 686	82	5,1%
Kenya	19 095	21 130	2 035	10,7%
Réunion	13	39	26	200,0%
Rwanda	466	548	82	17,6%
São Tomé and Príncipe	40	58	18	45,0%
Somalia	321	450	129	40,2%
Uganda	5 955	5 896	-59	-1,0%

**Annexure D – Number of tourists' difference between Jan – Jun 2023 and Jan – Jun 2024 by country of residence (concluded)**

Country of residence	Jan – Jun 2023	Jan – Jun 2024	Difference between Jan – Jun 2023 and Jan – Jun 2024	% change between Jan – Jun 2023 and Jan – Jun 2024
<b>West Africa</b>	<b>19 154</b>	<b>31 836</b>	<b>12 682</b>	<b>66,2%</b>
Benin	767	886	119	15,5%
Burkina Faso	348	288	-60	-17,2%
Cape Verde Island	167	156	-11	-6,6%
Côte d'Ivoire	1 019	1 138	119	11,7%
Gambia	200	176	-24	-12,0%
Ghana	5 051	15 674	10 623	210,3%
Guinea	667	597	-70	-10,5%
Guinea-Bissau	42	43	1	2,4%
Liberia	297	233	-64	-21,5%
Mali	548	471	-77	-14,1%
Mauritania	101	97	-4	-4,0%
Niger	170	145	-25	-14,7%
Nigeria	8 591	10 740	2 149	25,0%
Saint Helena	28	13	-15	-53,6%
Senegal	690	725	35	5,1%
Sierra Leone	247	277	30	12,1%
Togo	221	177	-44	-19,9%
<b>North Africa</b>	<b>6 188</b>	<b>6 428</b>	<b>240</b>	<b>3,9%</b>
Algeria	529	355	-174	-32,9%
Egypt	2 919	2 960	41	1,4%
Libya	306	334	28	9,2%
Morocco	779	842	63	8,1%
South Sudan	393	389	-4	-1,0%
The Sudan	630	442	-188	-29,8%
Tunisia	625	1 093	468	74,9%
Western Sahara	7	13	6	85,7%
<b>Unspecified</b>	<b>6 303</b>	<b>5 805</b>	<b>-498</b>	<b>-7,9%</b>



## 3.5 Annexure E – Number of tourists: Quarter 1, 2024 – Quarter 2, 2024 changes by country of residence and month of travel

Country of residence	Quarter 1, 2024 – Quarter 2, 2024								% change Qtr 1, 2024 – Qtr 2, 2024
	Jan	Feb	Mar	Qtr 1 2024	Apr	May	Jun	Qtr 2 2024	
<b>Total</b>	<b>971 846</b>	<b>725 674</b>	<b>750 968</b>	<b>2 448 488</b>	<b>702 021</b>	<b>649 454</b>	<b>641 284</b>	<b>1 992 759</b>	<b>-18,6%</b>
<b>Overseas</b>	<b>195 423</b>	<b>209 545</b>	<b>216 563</b>	<b>621 531</b>	<b>160 708</b>	<b>147 428</b>	<b>134 396</b>	<b>442 532</b>	<b>-28,8%</b>
<b>Europe</b>	<b>135 368</b>	<b>145 532</b>	<b>139 827</b>	<b>420 727</b>	<b>93 213</b>	<b>64 045</b>	<b>49 749</b>	<b>207 007</b>	<b>-50,8%</b>
Austria	2 571	3 053	2 256	<b>7 880</b>	1 224	844	559	<b>2 627</b>	-66,7%
Belgium	3 799	5 100	4 812	<b>13 711</b>	3 150	1 934	1 677	<b>6 761</b>	-50,7%
France	10 070	12 803	11 915	<b>34 788</b>	12 378	10 023	5 649	<b>28 050</b>	-19,4%
Germany	31 072	32 168	35 714	<b>98 954</b>	14 131	9 620	6 282	<b>30 033</b>	-69,6%
Ireland	3 108	2 872	3 502	<b>9 482</b>	2 282	1 470	1 685	<b>5 437</b>	-42,7%
Italy	3 475	3 644	3 609	<b>10 728</b>	3 647	2 595	3 021	<b>9 263</b>	-13,7%
Portugal	1 634	2 007	2 410	<b>6 051</b>	1 911	1 582	1 261	<b>4 754</b>	-21,4%
Russian Federation	2 884	3 013	3 432	<b>9 329</b>	2 776	1 815	1 404	<b>5 995</b>	-35,7%
Spain	1 712	2 108	2 816	<b>6 636</b>	2 198	1 922	2 175	<b>6 295</b>	-5,1%
Sweden	3 591	3 897	2 366	<b>9 854</b>	1 332	1 247	691	<b>3 270</b>	-66,8%
Switzerland	4 363	5 356	4 181	<b>13 900</b>	3 485	1 717	1 225	<b>6 427</b>	-53,8%
The Netherlands	14 564	13 393	9 591	<b>37 548</b>	11 500	5 832	4 029	<b>21 361</b>	-43,1%
Turkey	2 045	1 444	1 153	<b>4 642</b>	1 826	960	1 018	<b>3 804</b>	-18,1%
UK	40 517	43 007	41 896	<b>125 420</b>	24 991	17 983	15 601	<b>58 575</b>	-53,3%
Other	9 963	11 667	10 174	<b>31 804</b>	6 382	4 501	3 472	<b>14 355</b>	-54,9%
<b>North America</b>	<b>27 250</b>	<b>30 462</b>	<b>41 519</b>	<b>99 231</b>	<b>32 649</b>	<b>40 860</b>	<b>43 815</b>	<b>117 324</b>	<b>18,2%</b>
Canada	4 803	5 647	6 217	<b>16 667</b>	4 785	4 194	3 218	<b>12 197</b>	-26,8%
USA	22 447	24 815	35 302	<b>82 564</b>	27 864	36 666	40 597	<b>105 127</b>	27,3%
<b>Central and South America</b>	<b>7 149</b>	<b>5 738</b>	<b>6 076</b>	<b>18 963</b>	<b>5 464</b>	<b>5 944</b>	<b>6 328</b>	<b>17 736</b>	<b>-6,5%</b>
Argentina	723	493	497	<b>1 713</b>	370	402	487	<b>1 259</b>	-26,5%
Brazil	4 997	3 717	3 644	<b>12 358</b>	3 705	3 935	3 971	<b>11 611</b>	-6,0%
Mexico	257	257	576	<b>1 090</b>	353	491	380	<b>1 224</b>	12,3%
Other	1 172	1 271	1 359	<b>3 802</b>	1 036	1 116	1 490	<b>3 642</b>	-4,2%

**Annexure E – Number of tourists: Quarter 1, 2024 – Quarter 2, 2024 changes by country of residence and month of travel (continued)**

Country of residence	Quarter 1, 2024 – Quarter 2, 2024								% change Qtr 1, 2024 – Qtr 2, 2024
	Jan	Feb	Mar	Qtr 1 2024	Apr	May	Jun	Qtr 2 2024	
<b>Australasia</b>	<b>7 994</b>	<b>7 064</b>	<b>9 649</b>	<b>24 707</b>	<b>9 841</b>	<b>10 697</b>	<b>9 586</b>	<b>30 124</b>	<b>21,9%</b>
Australia	6 652	5 861	7 953	<b>20 466</b>	8 001	9 128	7 967	<b>25 096</b>	22,6%
New Zealand	1 330	1 181	1 687	<b>4 198</b>	1 822	1 555	1 541	<b>4 918</b>	17,2%
Other	12	22	9	<b>43</b>	18	14	78	<b>110</b>	155,8%
<b>Middle East</b>	<b>2 441</b>	<b>2 971</b>	<b>2 750</b>	<b>8 162</b>	<b>3 089</b>	<b>2 815</b>	<b>6 621</b>	<b>12 525</b>	<b>53,5%</b>
Israel	611	785	672	<b>2 068</b>	913	452	359	<b>1 724</b>	-16,6%
Saudi Arabia	1 047	1 095	245	<b>2 387</b>	998	1 119	4 235	<b>6 352</b>	166,1%
United Arab Emirates	95	138	88	<b>321</b>	218	315	829	<b>1 362</b>	324,3%
Other	688	953	1 745	<b>3 386</b>	960	929	1 198	<b>3 087</b>	-8,8%
<b>Asia</b>	<b>15 221</b>	<b>17 778</b>	<b>16 742</b>	<b>49 741</b>	<b>16 452</b>	<b>23 067</b>	<b>18 297</b>	<b>57 816</b>	<b>16,2%</b>
Bangladesh	520	489	481	<b>1 490</b>	448	718	375	<b>1 541</b>	3,4%
China	2 780	3 819	4 340	<b>10 939</b>	3 006	3 196	3 499	<b>9 701</b>	-11,3%
India	5 524	5 482	5 203	<b>16 209</b>	6 164	11 695	7 965	<b>25 824</b>	59,3%
Japan	1 021	2 567	1 382	<b>4 970</b>	1 336	1 365	1 207	<b>3 908</b>	-21,4%
Malaysia	367	438	367	<b>1 172</b>	543	729	466	<b>1 738</b>	48,3%
Pakistan	1 072	1 035	928	<b>3 035</b>	1 193	1 158	1 082	<b>3 433</b>	13,1%
Philippines	458	423	547	<b>1 428</b>	455	641	590	<b>1 686</b>	18,1%
Singapore	388	621	679	<b>1 688</b>	640	1 173	1 197	<b>3 010</b>	78,3%
South Korea	1 662	1 267	1 277	<b>4 206</b>	864	922	778	<b>2 564</b>	-39,0%
Thailand	330	298	428	<b>1 056</b>	732	509	360	<b>1 601</b>	51,6%
Other	1 099	1 339	1 110	<b>3 548</b>	1 071	961	778	<b>2 810</b>	-20,8%
<b>Africa</b>	<b>775 651</b>	<b>515 245</b>	<b>533 298</b>	<b>1 824 194</b>	<b>540 388</b>	<b>500 928</b>	<b>505 869</b>	<b>1 547 185</b>	<b>-15,2%</b>
<b>SADC</b>	<b>764 702</b>	<b>501 743</b>	<b>520 175</b>	<b>1 786 620</b>	<b>526 685</b>	<b>488 299</b>	<b>494 006</b>	<b>1 508 990</b>	<b>-15,5%</b>
Angola	2 847	3 457	3 583	<b>9 887</b>	3 442	2 670	2 508	<b>8 620</b>	-12,8%
Botswana	26 682	25 933	38 146	<b>90 761</b>	28 635	30 079	29 416	<b>88 130</b>	-2,9%
DRC	1 740	2 502	2 383	<b>6 625</b>	2 394	2 154	2 044	<b>6 592</b>	-0,5%
Eswatini	63 679	56 254	70 180	<b>190 113</b>	70 135	65 516	64 397	<b>200 048</b>	5,2%

**Annexure E – Number of tourists: Quarter 1, 2024 – Quarter 2, 2024 changes by country of residence and month of travel (continued)**

Country of residence	Quarter 1, 2024 – Quarter 2, 2024								% change Qtr 1, 2024 – Qtr 2, 2024
	Jan	Feb	Mar	Qtr 1 2024	Apr	May	Jun	Qtr 2 2024	
Lesotho	165 235	90 842	73 121	<b>329 198</b>	59 446	56 036	61 769	<b>177 251</b>	-46,2%
Madagascar	320	355	407	<b>1 082</b>	335	389	360	<b>1 084</b>	0,2%
Malawi	16 038	11 708	11 453	<b>39 199</b>	9 184	9 818	10 407	<b>29 409</b>	-25,0%
Mauritius	1 246	1 594	1 376	<b>4 216</b>	2 078	1 190	1 007	<b>4 275</b>	1,4%
Mozambique	176 100	122 060	116 882	<b>415 042</b>	121 854	125 882	123 647	<b>371 383</b>	-10,5%
Namibia	11 821	11 989	15 302	<b>39 112</b>	12 614	12 290	13 415	<b>38 319</b>	-2,0%
Seychelles	428	523	518	<b>1 469</b>	250	165	206	<b>621</b>	-57,7%
Tanzania	2 647	3 029	2 813	<b>8 489</b>	3 174	2 812	2 959	<b>8 945</b>	5,4%
Zambia	11 950	12 370	13 432	<b>37 752</b>	12 891	12 412	12 381	<b>37 684</b>	-0,2%
Zimbabwe	283 969	159 127	170 579	<b>613 675</b>	200 253	166 886	169 490	<b>536 629</b>	-12,6%
<b>'Other' African</b>	<b>10 949</b>	<b>13 502</b>	<b>13 123</b>	<b>37 574</b>	<b>13 703</b>	<b>12 629</b>	<b>11 863</b>	<b>38 195</b>	<b>1,7%</b>
<b>East and Central Africa</b>	<b>5 446</b>	<b>6 305</b>	<b>6 620</b>	<b>18 371</b>	<b>7 037</b>	<b>5 995</b>	<b>6 102</b>	<b>19 134</b>	<b>4,2%</b>
Burundi	96	86	126	<b>308</b>	94	136	86	<b>316</b>	2,6%
Cameroon	231	359	328	<b>918</b>	458	332	251	<b>1 041</b>	13,4%
Central African Republic	10	24	15	<b>49</b>	10	29	9	<b>48</b>	-2,0%
Chad	31	27	35	<b>93</b>	29	37	36	<b>102</b>	9,7%
Comoros	17	13	20	<b>50</b>	17	26	61	<b>104</b>	108,0%
Congo	89	120	113	<b>322</b>	155	92	124	<b>371</b>	15,2%
Djibouti	9	8	4	<b>21</b>	6	9	11	<b>26</b>	23,8%
Equatorial Guinea	23	24	22	<b>69</b>	39	16	22	<b>77</b>	11,6%
Eritrea	46	20	49	<b>115</b>	37	46	42	<b>125</b>	8,7%
Ethiopia	464	593	568	<b>1 625</b>	631	687	600	<b>1 918</b>	18,0%
Gabon	309	310	269	<b>888</b>	283	200	315	<b>798</b>	-10,1%
Kenya	3 001	3 441	3 787	<b>10 229</b>	4 044	3 334	3 523	<b>10 901</b>	6,6%
Réunion	20	1	2	<b>23</b>	7	9	-	<b>16</b>	-30,4%
Rwanda	91	95	100	<b>286</b>	90	77	95	<b>262</b>	-8,4%
São Tomé and Príncipe	5	21	5	<b>31</b>	5	12	10	<b>27</b>	-12,9%
Somalia	56	81	104	<b>241</b>	65	92	52	<b>209</b>	-13,3%
Uganda	948	1 082	1 073	<b>3 103</b>	1 067	861	865	<b>2 793</b>	-10,0%

**Annexure E – Number of tourists: Quarter 1, 2024 – Quarter 2, 2024 changes by country of residence and month of travel (concluded)**

Country of residence	Quarter 1, 2024 – Quarter 2, 2024								% change Qtr 1, 2024 – Qtr 2, 2024
	Jan	Feb	Mar	Qtr 1 2024	Apr	May	Jun	Qtr 2 2024	
<b>West Africa</b>	<b>4 581</b>	<b>5 924</b>	<b>5 698</b>	<b>16 203</b>	<b>5 444</b>	<b>5 490</b>	<b>4 699</b>	<b>15 633</b>	<b>-3,5%</b>
Benin	121	144	173	<b>438</b>	122	173	153	<b>448</b>	2,3%
Burkina Faso	28	83	40	<b>151</b>	39	55	43	<b>137</b>	-9,3%
Cape Verde Island	14	23	34	<b>71</b>	40	21	24	<b>85</b>	19,7%
Côte d'Ivoire	104	223	159	<b>486</b>	248	231	173	<b>652</b>	34,2%
Gambia	28	41	34	<b>103</b>	26	24	23	<b>73</b>	-29,1%
Ghana	2 207	2 776	2 921	<b>7 904</b>	2 619	2 724	2 427	<b>7 770</b>	-1,7%
Guinea	101	132	76	<b>309</b>	100	103	85	<b>288</b>	-6,8%
Guinea-Bissau	6	8	5	<b>19</b>	10	10	4	<b>24</b>	26,3%
Liberia	24	46	39	<b>109</b>	34	38	52	<b>124</b>	13,8%
Mali	56	123	46	<b>225</b>	61	101	84	<b>246</b>	9,3%
Mauritania	12	35	10	<b>57</b>	16	8	16	<b>40</b>	-29,8%
Niger	25	27	19	<b>71</b>	27	24	23	<b>74</b>	4,2%
Nigeria	1 726	2 011	1 958	<b>5 695</b>	1 856	1 753	1 436	<b>5 045</b>	-11,4%
Saint Helena	5	2	-	<b>7</b>	1	3	2	<b>6</b>	-14,3%
Senegal	81	137	124	<b>342</b>	151	144	88	<b>383</b>	12,0%
Sierra Leone	26	74	36	<b>136</b>	53	44	44	<b>141</b>	3,7%
Togo	17	39	24	<b>80</b>	41	34	22	<b>97</b>	21,3%
<b>North Africa</b>	<b>922</b>	<b>1 273</b>	<b>805</b>	<b>3 000</b>	<b>1 222</b>	<b>1 144</b>	<b>1 062</b>	<b>3 428</b>	<b>14,3%</b>
Algeria	53	96	42	<b>191</b>	50	51	63	<b>164</b>	-14,1%
Egypt	444	614	296	<b>1 354</b>	429	659	518	<b>1 606</b>	18,6%
Libya	70	43	27	<b>140</b>	103	51	40	<b>194</b>	38,6%
Morocco	142	191	177	<b>510</b>	99	113	120	<b>332</b>	-34,9%
South Sudan	55	70	60	<b>185</b>	57	62	85	<b>204</b>	10,3%
The Sudan	65	98	72	<b>235</b>	61	78	68	<b>207</b>	-11,9%
Tunisia	90	158	129	<b>377</b>	422	128	166	<b>716</b>	89,9%
Western Sahara	3	3	2	<b>8</b>	1	2	2	<b>5</b>	-37,5%
<b>Unspecified</b>	<b>772</b>	<b>884</b>	<b>1 107</b>	<b>2 763</b>	<b>925</b>	<b>1 098</b>	<b>1 019</b>	<b>3 042</b>	<b>10,1%</b>

## 3.6 Annexure F – Number of tourists: Quarter 2, 2023 – Quarter 2, 2024 changes by country of residence and month of travel

Country of residence	Quarter 2, 2023 – Quarter 2, 2024								
	Apr	May	Jun	Qtr 2 2023	Apr	May	Jun	Qtr 2 2024	% change 2023 – 2024
<b>Total</b>	<b>713 470</b>	<b>630 100</b>	<b>608 319</b>	<b>1 951 889</b>	<b>702 021</b>	<b>649 454</b>	<b>641 284</b>	<b>1 992 759</b>	<b>2,1%</b>
<b>Overseas</b>	<b>160 647</b>	<b>132 443</b>	<b>123 069</b>	<b>416 159</b>	<b>160 708</b>	<b>147 428</b>	<b>134 396</b>	<b>442 532</b>	<b>6,3%</b>
<b>Europe</b>	<b>97 243</b>	<b>60 955</b>	<b>48 894</b>	<b>207 092</b>	<b>93 213</b>	<b>64 045</b>	<b>49 749</b>	<b>207 007</b>	<b>0,0%</b>
Austria	1 308	830	459	<b>2 597</b>	1 224	844	559	<b>2 627</b>	1,2%
Belgium	3 811	2 048	1 481	<b>7 340</b>	3 150	1 934	1 677	<b>6 761</b>	-7,9%
France	11 792	7 748	5 450	<b>24 990</b>	12 378	10 023	5 649	<b>28 050</b>	12,2%
Germany	17 802	9 019	5 895	<b>32 716</b>	14 131	9 620	6 282	<b>30 033</b>	-8,2%
Ireland	2 488	2 031	1 643	<b>6 162</b>	2 282	1 470	1 685	<b>5 437</b>	-11,8%
Italy	3 253	2 625	2 956	<b>8 834</b>	3 647	2 595	3 021	<b>9 263</b>	4,9%
Portugal	2 130	1 390	1 334	<b>4 854</b>	1 911	1 582	1 261	<b>4 754</b>	-2,1%
Russian Federation	2 103	1 721	1 469	<b>5 293</b>	2 776	1 815	1 404	<b>5 995</b>	13,3%
Spain	2 123	1 882	2 093	<b>6 098</b>	2 198	1 922	2 175	<b>6 295</b>	3,2%
Sweden	1 406	1 049	806	<b>3 261</b>	1 332	1 247	691	<b>3 270</b>	0,3%
Switzerland	3 929	1 838	1 158	<b>6 925</b>	3 485	1 717	1 225	<b>6 427</b>	-7,2%
The Netherlands	10 707	5 176	4 031	<b>19 914</b>	11 500	5 832	4 029	<b>21 361</b>	7,3%
Turkey	1 058	1 068	967	<b>3 093</b>	1 826	960	1 018	<b>3 804</b>	23,0%
UK	27 125	17 989	15 461	<b>60 575</b>	24 991	17 983	15 601	<b>58 575</b>	-3,3%
Other	6 208	4 541	3 691	<b>14 440</b>	6 382	4 501	3 472	<b>14 355</b>	-0,6%
<b>North America</b>	<b>31 029</b>	<b>36 461</b>	<b>39 101</b>	<b>106 591</b>	<b>32 649</b>	<b>40 860</b>	<b>43 815</b>	<b>117 324</b>	<b>10,1%</b>
Canada	4 179	3 989	3 069	<b>11 237</b>	4 785	4 194	3 218	<b>12 197</b>	8,5%
USA	26 850	32 472	36 032	<b>95 354</b>	27 864	36 666	40 597	<b>105 127</b>	10,2%
<b>Central and South America</b>	<b>3 188</b>	<b>2 830</b>	<b>2 852</b>	<b>8 870</b>	<b>5 464</b>	<b>5 944</b>	<b>6 328</b>	<b>17 736</b>	<b>100,0%</b>
Argentina	255	173	251	<b>679</b>	370	402	487	<b>1 259</b>	85,4%
Brazil	1 487	1 255	1 433	<b>4 175</b>	3 705	3 935	3 971	<b>11 611</b>	178,1%
Mexico	540	356	335	<b>1 231</b>	353	491	380	<b>1 224</b>	-0,6%
Other	906	1 046	833	<b>2 785</b>	1 036	1 116	1 490	<b>3 642</b>	30,8%

**Annexure F – Number of tourists: Quarter 2, 2023 – Quarter 2, 2024 changes by country of residence and month of travel (continued)**

Country of residence	Quarter 2, 2023 – Quarter 2, 2024								
	Apr	May	Jun	Qtr 2 2023	Apr	May	Jun	Qtr 2 2024	% change 2023 – 2024
<b>Australasia</b>	<b>9 959</b>	<b>7 878</b>	<b>8 422</b>	<b>26 259</b>	<b>9 841</b>	<b>10 697</b>	<b>9 586</b>	<b>30 124</b>	<b>14,7%</b>
Australia	7 877	6 435	6 926	21 238	8 001	9 128	7 967	25 096	18,2%
New Zealand	2 025	1 434	1 454	4 913	1 822	1 555	1 541	4 918	0,1%
Other	57	9	42	108	18	14	78	110	1,9%
<b>Middle East</b>	<b>3 318</b>	<b>2 716</b>	<b>5 388</b>	<b>11 422</b>	<b>3 089</b>	<b>2 815</b>	<b>6 621</b>	<b>12 525</b>	<b>9,7%</b>
Israel	1 972	971	1 065	4 008	913	452	359	1 724	-57,0%
Saudi Arabia	474	652	2 555	3 681	998	1 119	4 235	6 352	72,6%
United Arab Emirates	249	316	733	1 298	218	315	829	1 362	4,9%
Other	623	777	1 035	2 435	960	929	1 198	3 087	26,8%
<b>Asia</b>	<b>15 910</b>	<b>21 603</b>	<b>18 412</b>	<b>55 925</b>	<b>16 452</b>	<b>23 067</b>	<b>18 297</b>	<b>57 816</b>	<b>3,4%</b>
Bangladesh	612	812	531	1 955	448	718	375	1 541	-21,2%
China	3 524	3 389	3 281	10 194	3 006	3 196	3 499	9 701	-4,8%
India	5 942	10 876	8 495	25 313	6 164	11 695	7 965	25 824	2,0%
Japan	964	1 060	1 033	3 057	1 336	1 365	1 207	3 908	27,8%
Malaysia	490	579	541	1 610	543	729	466	1 738	8,0%
Pakistan	898	1 351	955	3 204	1 193	1 158	1 082	3 433	7,1%
Philippines	452	556	600	1 608	455	641	590	1 686	4,9%
Singapore	570	797	969	2 336	640	1 173	1 197	3 010	28,9%
South Korea	681	683	735	2 099	864	922	778	2 564	22,2%
Thailand	632	487	387	1 506	732	509	360	1 601	6,3%
Other	1 145	1 013	885	3 043	1 071	961	778	2 810	-7,7%
<b>Africa</b>	<b>551 661</b>	<b>496 493</b>	<b>484 306</b>	<b>1 532 460</b>	<b>540 388</b>	<b>500 928</b>	<b>505 869</b>	<b>1 547 185</b>	<b>1,0%</b>
<b>SADC</b>	<b>542 427</b>	<b>485 608</b>	<b>475 358</b>	<b>1 503 393</b>	<b>526 685</b>	<b>488 299</b>	<b>494 006</b>	<b>1 508 990</b>	<b>0,4%</b>
Angola	3 651	2 842	2 454	8 947	3 442	2 670	2 508	8 620	-3,7%
Botswana	33 024	24 640	26 686	84 350	28 635	30 079	29 416	88 130	4,5%
DRC	1 761	1 516	1 425	4 702	2 394	2 154	2 044	6 592	40,2%
Eswatini	69 354	53 876	56 512	179 742	70 135	65 516	64 397	200 048	11,3%

**Annexure F – Number of tourists: Quarter 2, 2023 – Quarter 2, 2024 changes by country of residence and month of travel (continued)**

Country of residence	Quarter 2, 2023 – Quarter 2, 2024								
	Apr	May	Jun	Qtr 2 2023	Apr	May	Jun	Qtr 2 2024	% change 2023 – 2024
Lesotho	107 924	94 585	88 025	<b>290 534</b>	59 446	56 036	61 769	<b>177 251</b>	-39,0%
Madagascar	319	329	241	<b>889</b>	335	389	360	<b>1 084</b>	21,9%
Malawi	8 101	9 717	10 502	<b>28 320</b>	9 184	9 818	10 407	<b>29 409</b>	3,8%
Mauritius	1 631	1 410	1 088	<b>4 129</b>	2 078	1 190	1 007	<b>4 275</b>	3,5%
Mozambique	101 922	107 160	104 152	<b>313 234</b>	121 854	125 882	123 647	<b>371 383</b>	18,6%
Namibia	14 065	12 419	13 328	<b>39 812</b>	12 614	12 290	13 415	<b>38 319</b>	-3,8%
Seychelles	321	339	185	<b>845</b>	250	165	206	<b>621</b>	-26,5%
Tanzania	2 593	3 042	2 444	<b>8 079</b>	3 174	2 812	2 959	<b>8 945</b>	10,7%
Zambia	11 624	11 821	11 616	<b>35 061</b>	12 891	12 412	12 381	<b>37 684</b>	7,5%
Zimbabwe	186 137	161 912	156 700	<b>504 749</b>	200 253	166 886	169 490	<b>536 629</b>	6,3%
<b>'Other' African</b>	<b>9 234</b>	<b>10 885</b>	<b>8 948</b>	<b>29 067</b>	<b>13 703</b>	<b>12 629</b>	<b>11 863</b>	<b>38 195</b>	<b>31,4%</b>
<b>East and Central Africa</b>	<b>5 616</b>	<b>6 019</b>	<b>4 928</b>	<b>16 563</b>	<b>7 037</b>	<b>5 995</b>	<b>6 102</b>	<b>19 134</b>	<b>15,5%</b>
Burundi	71	98	60	<b>229</b>	94	136	86	<b>316</b>	38,0%
Cameroon	340	340	285	<b>965</b>	458	332	251	<b>1 041</b>	7,9%
Central African Republic	12	30	10	<b>52</b>	10	29	9	<b>48</b>	-7,7%
Chad	32	42	21	<b>95</b>	29	37	36	<b>102</b>	7,4%
Comoros	19	29	22	<b>70</b>	17	26	61	<b>104</b>	48,6%
Congo	159	125	99	<b>383</b>	155	92	124	<b>371</b>	-3,1%
Djibouti	3	18	3	<b>24</b>	6	9	11	<b>26</b>	8,3%
Equatorial Guinea	13	24	8	<b>45</b>	39	16	22	<b>77</b>	71,1%
Eritrea	20	30	28	<b>78</b>	37	46	42	<b>125</b>	60,3%
Ethiopia	406	554	442	<b>1 402</b>	631	687	600	<b>1 918</b>	36,8%
Gabon	263	269	205	<b>737</b>	283	200	315	<b>798</b>	8,3%
Kenya	3 277	3 346	2 844	<b>9 467</b>	4 044	3 334	3 523	<b>10 901</b>	15,1%
Réunion	-	-	5	<b>5</b>	7	9	-	<b>16</b>	220,0%
Rwanda	61	80	74	<b>215</b>	90	77	95	<b>262</b>	21,9%
São Tomé and Príncipe	9	4	5	<b>18</b>	5	12	10	<b>27</b>	50,0%
Somalia	24	76	62	<b>162</b>	65	92	52	<b>209</b>	29,0%
Uganda	907	954	755	<b>2 616</b>	1 067	861	865	<b>2 793</b>	6,8%

**Annexure F – Number of tourists: Quarter 2, 2023 – Quarter 2, 2024 changes by country of residence and month of travel (concluded)**

Country of residence	Quarter 2, 2023 – Quarter 2, 2024								
	Apr	May	Jun	Qtr 2 2023	Apr	May	Jun	Qtr 2 2024	% change 2023 – 2024
<b>West Africa</b>	<b>2 824</b>	<b>3 664</b>	<b>3 057</b>	<b>9 545</b>	<b>5 444</b>	<b>5 490</b>	<b>4 699</b>	<b>15 633</b>	<b>63,8%</b>
Benin	126	151	115	<b>392</b>	122	173	153	<b>448</b>	14,3%
Burkina Faso	35	67	33	<b>135</b>	39	55	43	<b>137</b>	1,5%
Cape Verde Island	21	33	12	<b>66</b>	40	21	24	<b>85</b>	28,8%
Côte d'Ivoire	104	217	132	<b>453</b>	248	231	173	<b>652</b>	43,9%
Gambia	49	36	16	<b>101</b>	26	24	23	<b>73</b>	-27,7%
Ghana	772	1 063	954	<b>2 789</b>	2 619	2 724	2 427	<b>7 770</b>	178,6%
Guinea	105	102	102	<b>309</b>	100	103	85	<b>288</b>	-6,8%
Guinea-Bissau	7	1	5	<b>13</b>	10	10	4	<b>24</b>	84,6%
Liberia	38	70	37	<b>145</b>	34	38	52	<b>124</b>	-14,5%
Mali	56	108	68	<b>232</b>	61	101	84	<b>246</b>	6,0%
Mauritania	12	18	13	<b>43</b>	16	8	16	<b>40</b>	-7,0%
Niger	23	36	16	<b>75</b>	27	24	23	<b>74</b>	-1,3%
Nigeria	1 322	1 539	1 380	<b>4 241</b>	1 856	1 753	1 436	<b>5 045</b>	19,0%
Saint Helena	10	5	5	<b>20</b>	1	3	2	<b>6</b>	-70,0%
Senegal	76	149	74	<b>299</b>	151	144	88	<b>383</b>	28,1%
Sierra Leone	44	42	33	<b>119</b>	53	44	44	<b>141</b>	18,5%
Togo	24	27	62	<b>113</b>	41	34	22	<b>97</b>	-14,2%
<b>North Africa</b>	<b>794</b>	<b>1 202</b>	<b>963</b>	<b>2 959</b>	<b>1 222</b>	<b>1 144</b>	<b>1 062</b>	<b>3 428</b>	<b>15,8%</b>
Algeria	107	88	56	<b>251</b>	50	51	63	<b>164</b>	-34,7%
Egypt	385	569	505	<b>1 459</b>	429	659	518	<b>1 606</b>	10,1%
Libya	39	52	40	<b>131</b>	103	51	40	<b>194</b>	48,1%
Morocco	57	202	171	<b>430</b>	99	113	120	<b>332</b>	-22,8%
South Sudan	58	89	60	<b>207</b>	57	62	85	<b>204</b>	-1,4%
The Sudan	56	57	46	<b>159</b>	61	78	68	<b>207</b>	30,2%
Tunisia	91	141	85	<b>317</b>	422	128	166	<b>716</b>	125,9%
Western Sahara	1	4	-	<b>5</b>	1	2	2	<b>5</b>	0,0%
<b>Unspecified</b>	<b>1 162</b>	<b>1 164</b>	<b>944</b>	<b>3 270</b>	<b>925</b>	<b>1 098</b>	<b>1 019</b>	<b>3 042</b>	<b>-7,0%</b>



**3.7 Annexure G – Number of tourists by port of entry and province, June 2024**

<b>PortName and province</b>	<b>Frequency</b>
<b>Total</b>	<b>641 284</b>
<b>Western Cape</b>	<b>47 197</b>
Cape Town International Airport	46 635
Cape Town Harbour	562
<b>Eastern Cape</b>	<b>3 822</b>
Telle Bridge	3 822
<b>Northern Cape</b>	<b>8 542</b>
Violsdrift	3 737
Nakop	4 805
<b>Free State</b>	<b>56 045</b>
Ficksburg	40 086
Caledonspoort	11 784
Van Rooyens Gate	4 175
<b>KwaZulu Natal</b>	<b>19 268</b>
Kosibay	5 545
Golela	10 256
King Shaka International Airport	3 467
<b>North West</b>	<b>31 963</b>
Kopfontein	18 796
Schilpad Gate	7 380
Ramathlabama	5 787
<b>Gauteng</b>	<b>126 244</b>
Oliver Tambo International Airport	125 931
Lanseria International Airport	214
Waterkloof Military Airbase	99
<b>Mpumalanga</b>	<b>195 534</b>
Lebombo	128 773
Oshoek	34 123
Jeppes Reef	10 145
Mananga	11 691
Mahamba	6 599
Nerston	441
Emahlatini	3 762
<b>Limpopo</b>	<b>152 669</b>
Beit Bridge	133 520
Groblers Bridge	19 149

## 4. Explanatory notes

### 4.1 Introduction

Legal movements across South African borders, as well as legal immigration into South Africa, fall under the jurisdiction of the Department of Home Affairs (DHA). Stats SA then processes, analyses and publishes this information.

Administrative data sources from the DHA, that is, information from all the country's ports of entry and applications for permanent residence, constitute the only comprehensive source of information on foreign arrivals and departures, documented immigrants and emigrants. The information from this source of data provides the best national coverage (in terms of both space and time) of the population movements of South African residents and foreign travellers. The data can be used for the following:

- To estimate, monitor and understand salient characteristics of foreign travellers and volumes of South African residents travelling outside South Africa.
- To provide information that can be used to (a) assess the extent of government's progress in strengthening bilateral political and economic relations by assessing the number of international tourist arrivals, and (b) benchmark surveys focusing on the demand for local tourism services by foreign travellers.

### 4.2 Purpose of the statistical release

This release reports on arrivals, departures and transit travellers of South African residents and foreign travellers. Detailed information on the age and sex distribution; mode of travel; national and regional distribution; and purpose of travel of overnight visitors or tourists are also provided.

### 4.3 Scope and coverage

The release covers data collected by DHA officials on travellers who departed from or entered the Republic of South Africa (RSA). It is crucial to note that unlike data from census or sample surveys that count individual persons, border statistics by their nature, measure events i.e. movements of persons rather than the physical persons. The reason is that the same person can cross the border several times during a specified time and his or her information is recorded every time he or she passes through the border.

### 4.4 Data

Information published in this release is based on data obtained from the following data sources within the DHA:

- Data routinely collected by immigration officers at all road, air and sea entry ports on all travellers (South African residents and foreign travellers) arriving into or departing from South Africa are captured into the DHA's population Movement Control System (MCS). The counts/statistics relate to the number of individual movements, rather than to the number of people. Hence, the multiple movements of individual people during the calendar month are each counted separately. Generally, the data are collected directly from travel documents either by scanning or capturing onto the ports' electronic database. No forms or cards are used (except on rare occasions when the capturing system is down) to collect information from travellers. Individual ports regularly transmit data onto the national database at the head office of the DHA.
- Stats SA receives downloaded data covering a particular calendar month from the DHA.
- As part of data interrogation, data from OR Tambo International Airport, which has the highest volume of travellers, are compared with passenger statistics from the Airports Company of South Africa (ACSA). As expected, in any specific month, an increase in the volume of passengers reported by ACSA is also reflected in an increase in the volume of travellers recorded by DHA. A similar pattern has also been observed when the volume of travellers decreased. In June 2024, the DHA data was 1,2% lower than that of ACSA.

## 4.5 Limitations

### 4.5.1 Outbound tourists

The information on the total number of arrivals and departures of South African residents is collected from the scanning of passports. However, data on the country visited are not collected from passengers; country of final destination; intended duration of stay and purpose of visit. With this limitation, it is impossible to identify the number of tourists from the data on South African residents.

## 4.6 Definition of terms

### 4.6.1 Definitions used by the United Nations Tourism (UN Tourism)

**Traveller** is someone who moves between different geographical locations for any purpose and any duration.

**Visitor** refers to any person travelling to a place other than that of his/her usual environment for less than 12 months and whose main purpose of the trip is other than the exercise of an activity remunerated from within the place visited.

**Same-Day visitor** is a visitor who visits a place for less than one night.

**Tourist** (overnight visitor) is a visitor who stays at least one night in collective or private accommodation in the place visited.

**Tourism** comprises the activities of persons travelling to, and staying in places outside their usual environment, for not more than one consecutive year, for leisure, business and other purposes. The usual environment of a person consists of a certain area around his/her place of residence, plus all the other places he/she frequently visits.

### 4.6.2 Definitions used specifically in this release

**South African resident** refers to either a South African citizen or a non-South African citizen with a South African permanent residence permit.

**Foreign traveller** refers to a traveller who is not a South African citizen or permanent resident.

**Region** refers to the following country classification:

- Overseas: Europe, North America, Central and South America, Australasia, the Middle East and Asia.
- Africa: SADC and 'other' Africa (East and Central Africa, West Africa and North Africa).

**Country** refers to individual countries within a region. The country of residence is used. The country of residence should not be confused with the country from which the visitor travelled.

**Africa** refers to all the countries in Africa (both mainland and island countries).

**SADC** refers to the fourteen countries, excluding South Africa, which belong to the Southern African Development Community.

**'Other' African** refers to all non-SADC African countries.

**Overseas** refers to all countries outside Africa.

**Trip** refers to the arrival and departure of a visitor in a specified month.

## 4.7 Symbols used

- = nil

< = less than

## 4.8 Rounding off

Percentages may not add up to 100 due to rounding.

## 5. General information

Stats SA publishes approximately 300 different statistical releases each year. It is not economically viable to produce them in more than one of South Africa's 12 official languages, since the releases are used extensively, not only locally but also by international economic and social-scientific communities. Stats SA releases are published in English.

Stats SA has copyright on this publication. Users may apply the information as they wish, provided that they acknowledge Stats SA as the source of the basic data wherever they process, apply, utilise, publish or distribute the data; and also that they specify that the relevant application and analysis (where applicable) result from their own processing of the data.

### Advance release calendar

An advance release calendar is disseminated at [www.statssa.gov.za](http://www.statssa.gov.za).

### Stats SA products

A complete set of Stats SA publications is available at the Stats SA Library and the following libraries:

National Library of South Africa, Pretoria Division  
National Library of South Africa, Cape Town Division  
Natal Society Library, Pietermaritzburg  
Library of Parliament, Cape Town  
Bloemfontein Public Library  
Johannesburg Public Library  
Eastern Cape Library Services, Qonce  
Central Regional Library, Polokwane  
Central Reference Library, Mbombela  
Central Reference Collection, Kimberley  
Central Reference Library, Mmabatho

Stats SA also provides a subscription service.

**Electronic services**

A large range of data are available via online services, CD and computer printouts. For more details about our electronic data, contact user information services.

You can visit us on the Internet at [www.statssa.gov.za](http://www.statssa.gov.za).

**Enquiries**

Telephone: (012) 310 8600 (user information services)  
(079) 511 9917 (technical enquiries)  
(012) 310 8251 (orders)  
(012) 310 4883/4885 (library)

Fax: (012) 310 8500/ 8495 (user information services)  
(012) 310 6937 (technical enquiries)

Email: MuthethoN@statssa.gov.za (technical enquiries)  
info@statssa.gov.za (user information services)

Postal address: Private Bag X44, Pretoria, 0001

Produced by Stats SA