



Advance release of recorded deaths

1997-2000

Co-operation between Statistics South Africa (Stats SA), the citizens of the country, the private sector and government institutions is essential for a successful statistical system. Without continued co-operation and goodwill, the timely release of relevant and reliable official statistics will not be possible.

Embargo: 11:30
Date: 20 December 2001

Stats SA publishes approximately three hundred different releases each year. It is not economically viable to produce them in more than one of South Africa's eleven official languages. Since the releases are used extensively, not only locally, but also by international economic and social-scientific communities, Stats SA releases are published in English only.



Published by
Statistics South Africa
Private Bag X44
Pretoria
0001

© Copyright, 2001

Users may apply or process this data, provided Statistics South Africa is acknowledged as the original source of the data; that it is specified that the application and/or analysis is the result of the user's independent processing of the data; and that neither the basic data nor any reprocessed version or application thereof may be sold or offered for sale in any form whatsoever without prior permission from Stats SA.

CONTENTS

Introduction and background to the release	1
Using the population register as a source of deaths data	1
Methods	1
Key findings	2
Graphs	9
Explanatory notes	21
Tables	
1.1 Recorded deaths by province and age, 1997	25
1.1.1 Total	25
1.1.2 Male	26
1.1.3 Female	27
1.2 Recorded deaths by province and age, 1998	28
1.2.1 Total	28
1.2.2 Male	29
1.2.3 Female	30
1.3 Recorded deaths by province and age, 1999	31
1.3.1 Total	31
1.3.2 Male	32
1.3.3 Female	33
1.4 Recorded deaths by province and age, 2000	34
1.4.1 Total	34
1.4.2 Male	35
1.4.3 Female	36
2.1 Recorded deaths by month of death, province and year, 1997-2000	37
2.1.1 Male	37
2.1.2 Female	40
3.1 Recorded deaths by magisterial district, sex and year of death, 1997-2000	43

A complete set of Stats SA publications is available in the Stats SA Library, and in the following public libraries:

National Library of South Africa, Pretoria Division
National Library of South Africa, Cape Town Division
Natal Society Library, Pietermaritzburg
Library of Parliament, Cape Town
Bloemfontein Public Library
Johannesburg Public Library
Eastern Cape Library Services, King William's Town
Central Regional Library, Pietersburg
Central Reference Library, Nelspruit
Central Reference Collection, Kimberley
Central Reference Library, Mmabatho



ADVANCED RELEASE OF DEATHS, 1997-2000

Using the electronic population register maintained by the Department of Home Affairs (DHA), the report shows that it is possible to obtain rapid provisional estimates of the number of deaths among South Africans and permanent residents. The report gives details about the recorded deaths over the period 1997-2000 and provides breakdowns of these deaths by sex, age and province and district of death. Over this period, the age profile of deaths changed nationally with more deaths occurring in the young adult ages. In some provinces, the male-female difference in number of deaths narrowed considerably. The two provinces of KwaZulu-Natal and Gauteng recorded the highest number of deaths.

1. INTRODUCTION AND BACKGROUND TO THE RELEASE

This report presents deaths data for the period 1997-2000, based on information on deceased South Africans and permanent residents whose details have been captured on the South African electronic population register (as at 05 March 2001). The results presented here are based on provisional data and may be subject to revisions with the release of the full reports on recorded deaths for the period, 1997-2000. This is the second release in the series on 'Advance release on recorded deaths'. The first issue was for the 1996 data year and was released in 1999. The statistical release was started as a response to the users' needs for more timely statistics on recorded deaths. Part of the reason for long delays in publishing annual reports on deaths has been the classification and coding of causes of death. To minimise the delay, it was decided to separate the cause of death variable from the rest of the variables related to death and to use some of these remaining variables to produce an advance release of mortality statistics.

In publishing death statistics, the practice that has been previously adopted by Statistics South Africa is that of publishing all the deaths registered in a given reference year (registration-based perspective). As such, the same perspective was used in publishing the 'Advance release of recorded deaths' for 1996. In this issue, the recorded deaths are for a given reference year during with the deaths occurred, irrespective of when the deaths were registered (occurrence-based perspective).

The following sections give some more clarity on using the population register for obtaining deaths data and provide some key findings in the data.

2. USING THE POPULATION REGISTER AS A SOURCE OF DEATHS DATA

When deaths occur in South Africa, the notification/register of death forms are filled in and submitted to the Department of Home Affairs (DHA). If the deceased were South African citizens or permanent residents (with identity documents), their details are captured on the South African electronic population register. After the DHA has put the images of the notification of deaths forms on microfilm, it sends all the forms to Stats SA for processing. Stats SA thus receives and processes notification of death forms for all those whose details have been filled in the notification of death forms (irrespective of whether or not they had identity documents and irrespective of whether or not they were South African citizens or residents). The electronic population register can be used to extract demographic details of all deaths occurring in a given year (irrespective of when the death was registered). Even though an increasing number of deaths occurring in South Africa are being registered, a certain proportion of deaths still do not get registered. This proportion is higher in the non-urban areas than in the urban areas. Related to this, not all South Africans have their details recorded on the population register. Although this is a small number, those whose details are not on the population register will not be reflected as deaths (derived from the population register) when they die. In a general sense, the number of deaths obtained from the population register is a subset of the number of deaths published by Stats SA for any given year.

3. METHODS

In determining the sex of the deceased from the population register data, the identity number was used. The steps followed in doing so are given in the explanatory notes. For the 1997 deaths, the sex of 1 137 cases could not be resolved. This number decreased to 613 in 1998, 448 in 1999 and finally to 249 in 2000. These unresolved cases have been removed from the tables and in the rest of the summary.

The three simplest measures for describing age patterns and trends in overall mortality are numbers, proportions (or percentages) and rates. All three measures have their advantages and disadvantages. As a simple illustration, a graph showing proportions will not reflect increases taking place in other age groups if the relative increase is higher in some other age groups. Even though rates are conceptually more suitable for describing age-specific patterns and trends, it is not advisable to use them (without adjustments) where death registration is known to be incomplete. As described earlier, the electronic population is capturing a proportion of registered deaths and the registered deaths in turn, comprise of a proportion of the actual deaths taking place in South Africa. The computation of appropriately adjusted age-specific death rates is an area for further research. For these reasons the report has used numbers and proportions for describing the changes observed in the age pattern and trend in overall mortality over the period 1997-2000.

4. VALIDATION OF THE DEATHS DATA OBTAINED FROM THE POPULATION REGISTER

Before proceeding to summarise the findings in the deaths data, there is a need to assess the reliability of the data obtained from the electronic population register. This will help to show the similarities and differences between the electronic population register data and the data from the death notification forms processed at Stats SA. One way of testing the internal consistency of the deaths data obtained from the electronic population register is to analyse the trend in reported deaths by month of death. This was done for all the years from 1997-2000 and the results are shown in Figure 1. The Figure shows that over the years there was a consistent increase in the number of deaths for each month. The only exception is the month of May for 1998. The reported deaths for that month exceeded those for the same month in 1999. Thus, with one exception, the data are internally consistent, which is one of the ways of assessing the reliability of data.

One way of testing the external consistency of the deaths data obtained from the electronic population register is to compare the data for 1996 with the Stats SA data for the same year. The comparison shows that the two data sets are largely parallel for age groups over 15-19. As expected, the population register data are consistently lower than the Stats SA data for all adult ages. For ages below 15-19, the population register records very few deaths. The figure is considerably lower than Stats SA's data for those age groups. Further details on this comparison are given in the explanatory notes.

While other more sophisticated internal and external consistency checks can be used, the observations from these two tests show that the population register data are valid for studying patterns and trends in adult mortality in South Africa.

5. KEY FINDINGS

5.1 Trend in recorded deaths for the period 1997-2000

Table A gives a summary of the total number of deaths recorded on the population register for the period, 1997-2000 and the percentage change between two consecutive years within the period. Table A and Figure 2 show that there has been a consistent increase in the total number of deaths during the 1997-2000 period. In all, the population register recorded an increase of a little over 100 000 deaths from 1997 to 2000. The sharpest increase during the period occurred over the years, 1997-1998.

Figure 2 shows that for each of the years over the period 1997-2000, the recorded male deaths were higher than the recorded female deaths. The difference, however, has been narrowing down over time. The male-female difference narrowed down from 34 289 in 1997 to 22 534 in 2000.

Table A: Summary of the total number of deaths recorded on the population for the period, 1997-2000 and the percentage change between two consecutive years within the period.

Year	Total number of recorded deaths on population register	Period	Percentage (%) increase
1997	260 273	1997-1998	14,9
1998	299 077	1998-1999	9,2
1999	326 618	1999-2000	11,0
2000	362 450		

5.2 Provincial breakdown by number of recorded deaths

In 1997, KwaZulu-Natal had the highest number of deaths (57 533), representing 22,3% of the total number of deaths, followed closely by Gauteng with 55 564 (21,6%) deaths, as shown in Table B and Figure 3. The Figures 4, 5 and 6 show the provincial breakdown in the number of deaths for the years 1998, 1999 and 2000 respectively.

While the absolute numbers of recorded deaths increased over time in all provinces, the proportion of deaths in Eastern Cape, KwaZulu-Natal and North West increased consistently between 1997 and 2000, as shown in Table B. On the other hand, the proportion of deaths in Western Cape, Northern Cape and Gauteng decreased consistently between 1997 and 2000.

Figure 3 shows that for all the provinces, male deaths in 1997 were higher than female deaths in the same year. The male-female difference was highest for Gauteng, (8 858), followed by KwaZulu-Natal, (7 763). The difference was least in Northern Cape, (912). Over the period 1997-2000, Figures 4 to 6 show that there was a sustained decrease in the male-female difference in six provinces, namely: Eastern Cape, KwaZulu-Natal, North West, Gauteng, Mpumalanga and Northern Province. By 2000 the male-female difference in the number of recorded deaths had considerably narrowed down in all the provinces. Figure 7a shows the comparative increase in the number of male deaths in the provinces over the years, while Figure 7b shows the same for female deaths. Both Figures show a sustained increase in the reported number of deaths for males as well as for females over the period.

Table B: Percentage distribution recorded deaths by province, 1997-2000

Province	1997	%	1998	%	1999	%	2000	%
Western Cape	29 384	11,4	31 585	10,7	32 787	10,2	34 390	9,7
Eastern Cape	30 248	11,7	36 947	12,5	43 615	13,6	49 832	14,0
Northern Cape	7 792	3,0	8 364	2,8	8 749	2,7	9 414	2,6
Free State	23 055	8,9	26 493	9,0	28 842	9,0	31 423	8,8
KwaZulu-Natal	57 533	22,3	67 313	22,8	75 206	23,4	84 851	23,8
North West	18 286	7,1	21 330	7,2	25 036	7,8	28 940	8,1
Gauteng	55 564	21,6	61 040	20,6	62 506	19,4	67 587	19,0
Mpumalanga	17 738	6,9	20 344	6,9	22 577	7,0	25 002	7,0
Northern Province	18 227	7,1	22 415	7,6	22 192	6,9	24 775	7,0
Total	257 827	100,0	295 831	100,0	321 510	100,0	356 214	100,0

5.3 Breakdown in number of recorded deaths by magisterial district of death

Table C gives the summary of the districts in which the highest number of deaths occurred during 1997. In Western Cape the two leading districts were Bellville, 4 095 (13,9% of province total) and Wynberg, 4 006 (13,6%). In Eastern Cape 7 529 deaths (24,5%) were reported to have occurred in Port Elizabeth. Similarly, in Free State 4 746 (20,5%) were reported to have occurred in Bloemfontein. In KwaZulu-Natal the two leading districts were Durban, 10 964 (19,0%) and Pietermaritzburg, 5 823 (10,1%). For Northern Cape about half of all the provincial deaths occurred in Kimberley, 2 551 (32,7%) and Gordonia, 1 314 (16,8%). Similarly, for Gauteng about half of all deaths occurred in Johannesburg, 20 238 (36,4%) and Pretoria 10 442 (18,8%). In North West the two leading districts were Klerksdorp, 3 146 (17,2%) and Molopo, 2 071 (11,3%). In Mpumalanga the three leading districts were Moretele II, 1 644 (9,3%), Witbank, 1 364 (7,7%) and Nsikazi 1 339 (7,5%). Lastly, in Northern Province the two leading districts were Pietersburg 1 862 (10,2%) and Potgietersrus, 1 841 (10,0%).

Tables D to F give the summary of deaths in leading districts for the years 1998 to 2000 respectively. In Western Cape, over the period 1998-2000, Wynberg dropped to third place, making Bellville and Cape Town the two leading districts, recording the highest proportion of deaths in the province. In Eastern Cape, Port Elizabeth remained the leading district (with over 18% of the deaths) for the whole period. Similarly, in Free State, Bloemfontein also remained the leading district (with over 17% of the deaths) for the whole period. In KwaZulu-Natal, Durban and Pietermaritzburg remained the leading districts for those years. In Northern Cape the pattern remained the same with about half of all deaths occurring in Kimberley and Gordonia. Similarly, in Gauteng about half of all deaths occurred in Johannesburg and Pretoria. In North West, Molopo dropped from the second place, making Klerksdorp and Odi the two leading districts, recording the highest proportion of deaths in the province. In Mpumalanga, the pattern remained the same with about a quarter of all deaths occurring in Witbank, Moretele II and Nsikazi. In Northern Province, partly because of the largely non-urban nature of the province, the deaths are spread out over the different districts rather than being concentrated in a few. The Tables show that besides Pietersburg and Potgietersrus, the other districts where significant number of deaths were recorded were: Letaba, Nebo and Thohoyandou.

Table C: Distribution of recorded deaths by leading district, South Africa, 1997

Province	Leading districts	Number	Per cent of province total	Province	Leading districts	Number	Per cent of province total
Western Cape	Mitchells Plain	2 291	7,8	Gauteng	Brakpan	3 087	5,5
	Cape Town	3 299	11,2		Pretoria	10 442	18,8
	Wynberg	4 006	13,6		Krugersdorp	2 343	4,2
	Bellville	4 095	13,9		Johannesburg	20 238	36,4
	Goodwood	2 182	7,4		Vanderbijlpark	3 406	6,1
	Worcester	1 274	4,3		Subtotal	39 516	71,0
	Subtotal	17 147	58,3		Other districts	16 128	29,0
	Other districts	12 258	41,7		Total	55 644	100,0
Total	29 405	100,0					
Eastern Cape	Port Elizabeth	7 529	24,5	North West	Klerksdorp	3 146	17,2
	East London	2 837	9,2		Rustenburg	1 530	8,4
	Uitenhage	1 529	5,0		Odi	2 003	10,9
	Mdantsane	2 033	6,6		Potchefstroom	1 406	7,7
	Subtotal	13 928	45,3		Molopo	2 071	11,3
	Other districts	16 825	54,7		Subtotal	10 156	55,4
	Total	30 753	100,0		Other districts	8 162	44,6
			Total	18 318	100,0		
Free State	Bloemfontein	4 746	20,5	Mpumalanga	Witbank	1 364	7,7
	Welkom	1 995	8,6		Ermelo	1 018	5,7
	Witsieshoek	2 284	9,9		Moretele II	1 644	9,3
	Kroonstad	1 547	6,7		Nsikazi	1 339	7,5
	Bethlehem	1 210	5,2		Middelburg	978	5,5
	Subtotal	11 782	51,0		Subtotal	6 343	35,7
	Other districts	11 320	49,0		Other districts	11 428	64,3
Total	23 102	100,0	Total	17 771	100,0		
KwaZulu-Natal	Durban	10 964	19,0	Northern Province	Pietersburg	1 862	10,2
	Pietermaritzburg	5 823	10,1		Potgietersrus	1 841	10,0
	Inanda	3 044	5,3		Letaba	1 608	8,8
	Lower Umfolozi	2 301	4,0		Nebo	1 306	7,1
	Port Shepstone	2 248	3,9		Thabamopo	973	5,3
	Subtotal	24 380	42,2		Subtotal	7 590	41,4
	Other districts	33 449	57,8		Other districts	10 737	58,6
Total	57 829	100,0	Total	18 327	100,0		
Northern Cape	Kimberley	2 551	32,7				
	Gordonia	1 314	16,8				
	Subtotal	3 865	49,6				
	Other districts	3 934	50,4				
Total	7 799	100,0					

Table D: Distribution of recorded deaths by leading district, South Africa, 1998

Province	Leading districts	Number	Per cent of province total	Province	Leading districts	Number	Per cent of province total
Western Cape	Mitchells Plain	2 459	7,8	Gauteng	Brakpan	3 289	5,4
	Cape Town	4 221	13,4		Heidelberg	2 363	3,9
	Wynberg	3 955	12,5		Pretoria	11 231	18,4
	Bellville	4 302	13,6		Krugersdorp	2 573	4,2
	Goodwood	2 108	6,7		Johannesburg	20 790	34,0
	Worcester	1 400	4,4		Vanderbijlpark	3 794	6,2
	Subtotal	18 445	58,4		Subtotal	44 040	72,1
	Other districts	13 153	41,6		Other districts	17 057	27,9
Total	31 598	100,0	Total	61 097	100,0		
Eastern Cape	Port Elizabeth	7 919	21,3	North West	Klerksdorp	3 634	17,0
	East London	3 186	8,6		Rustenburg	1 882	8,8
	Uitenhage	1 546	4,2		Odi	2 261	10,6
	Umtata	1 576	4,2		Potchefstroom	1 592	7,5
	Mdantsane	2 144	5,8		Subtotal	9 369	43,9
	Queenstown	1 083	2,9		Other districts	11 982	56,1
	Subtotal	17 454	47,0		Total	21 351	100,0
	Other districts	19 649	53,0				
Total	37 103	100,0					
Free State	Bloemfontein	4 840	18,3	Mpumalanga	Witbank	1 541	7,6
	Welkom	2 140	8,1		Ermelo	1 165	5,7
	Witsieshoek	2 906	11,0		Moretele II	1 996	9,8
	Kroonstad	1 785	6,7		Nsikazi	1 373	6,7
	Botshabelo	1 587	6,0		Middelburg	1 173	5,8
	Subtotal	13 258	50,0		Subtotal	7 248	35,6
	Other districts	13 262	50,0		Other districts	13 122	64,4
	Total	26 520	100,0		Total	20 370	100,0
KwaZulu-Natal	Durban	11 219	16,6	Northern Province	Pietersburg	2 205	9,8
	Pietermaritzburg	6 506	9,6		Potgietersrus	2 059	9,2
	Inanda	3 804	5,6		Letaba	2 139	9,5
	Lower Umfolozi	2 940	4,4		Nebo	1 581	7,0
	Newcastle	2 637	3,9		Thohoyandou	1 343	6,0
	Port Shepstone	2 556	3,8		Thabamooop	1 216	5,4
	Subtotal	29 662	43,9		Subtotal	10 543	46,9
	Other districts	37 868	56,1		Other districts	11 955	53,1
Total	67 530	100,0	Total	22 498	100,0		
Northern Cape	Kimberley	2 651	31,7				
	Gordonia	1 449	17,3				
	Subtotal	4 100	49,0				
	Other districts	4 267	51,0				
Total	8 367	100,0					

Table E: Distribution of recorded deaths by leading district, South Africa, 1999

Province	Leading districts	Number	Per cent of province total	Province	Leading districts	Number	Per cent of province total
Western Cape	Mitchells Plain	2 301	7,0	Gauteng	Brakpan	3 832	6,1
	Cape Town	6 032	18,4		Heidelberg	2 556	4,1
	Wynberg	3 174	9,7		Pretoria	9 919	15,9
	Bellville	4 102	12,5		Krugersdorp	2 716	4,3
	Goodwood	1 857	5,7		Johannesburg	20 544	32,8
	Worcester	1 409	4,3		Vanderbijlpark	4 187	6,7
	Subtotal	18 875	57,5		Subtotal	43 754	69,9
	Other districts	13 924	42,5		Other districts	18 799	30,1
Total	32 799	100,0	Total	62 553	100,0		
Eastern Cape	Port Elizabeth	8 213	18,8	North West	Klerksdorp	3 902	15,6
	East London	3 759	8,6		Rustenburg	2 179	8,7
	Mdantsane	2 111	4,8		Odi	3 572	14,3
	Umtata	2 069	4,7		Potchefstroom	1 728	6,9
	Queenstown	1 104	2,5		Mankwe	1 103	4,4
	King William's Town	1 180	2,7		Subtotal	12 484	49,8
	Subtotal	18 436	42,2		Other districts	12 572	50,2
	Other districts	25 288	57,8		Total	25 056	100,0
Total	43 724	100,0	Mpumalanga	Witbank	1 779	7,9	
Free State	Bloemfontein	5 166		17,9	Ermelo	1 291	5,7
	Welkom	2 466		8,5	Moretele II	2 089	9,2
	Witsieshoek	3 168		11,0	Nsikazi	1 772	7,8
	Kroonstad	1 888		6,5	Moutse	1 194	5,3
	Botshabelo	1 705		5,9	Subtotal	8 125	35,9
	Subtotal	14 393		49,8	Other districts	14 476	64,1
	Other districts	14 488		50,2	Total	22 601	100,0
	Total	28 881	100,0	Northern Province	Pietersburg	1 776	8,0
KwaZulu-Natal	Durban	12 076	16,0		Potgietersrus	1 999	9,0
	Pietermaritzburg	7 128	9,5		Thohoyandou	1 605	7,2
	Inanda	4 139	5,5		Nebo	1 652	7,4
	Lower Umfolozi	3 073	4,1		Mapulaneng	1 212	5,5
	Port Shepstone	2 973	3,9		Thabamoopo	1 192	5,4
	Newcastle	2 826	3,8		Subtotal	9 436	42,4
	Subtotal	32 215	42,8		Other districts	12 796	57,6
	Other districts	43 134	57,2	Total	22 232	100,0	
Total	75 349	100,0	Northern Cape	Kimberley	2 800	32,0	
Northern Cape	Gordonia	1 455		16,6	Subtotal	4 255	48,6
	Subtotal	4 255		48,6	Other districts	4 498	51,4
	Other districts	4 498		51,4	Total	8 753	100,0
	Total	8 753		100,0			

Table F: Distribution of recorded deaths by leading district, South Africa, 2000

Province	Leading districts	Number	Per cent of province total	Province	Leading districts	Number	Per cent of province total
Western Cape	Mitchells Plain	2 508	7,3	Gauteng	Brakpan	4 194	6,2
	Cape Town	5 636	16,4		Heidelberg	2 938	4,3
	Wynberg	3 881	11,3		Pretoria	10 104	14,9
	Bellville	4 492	13,1		Krugersdorp	2 655	3,9
	Goodwood	2 023	5,9		Johannesburg	21 851	32,3
	Paarl	1 440	4,2		Vanderbijlpark	4 672	6,9
	Subtotal	19 980	58,1		Subtotal	46 414	68,6
	Other districts	14 415	41,9		Other districts	21 198	31,4
Total	34 395	100,0	Total	67 612	100,0		
Eastern Cape	Port Elizabeth	9 128	18,3	North West	Klerksdorp	4 385	15,1
	East London	3 952	7,9		Rustenburg	2 468	8,5
	Mdantsane	2 193	4,4		Odi	4 137	14,3
	Umtata	2 537	5,1		Potchefstroom	1 885	6,5
	Lusikisiki	1 610	3,2		Molopo	2 633	9,1
	King William's Town	1 358	2,7		Subtotal	15 508	53,6
	Subtotal	20 778	41,6		Other districts	13 444	46,4
	Other districts	29 132	58,4		Total	28 952	100,0
Total	49 910	100,0					
Free State	Bloemfontein	5 561	17,7	Mpumalanga	Witbank	2 085	8,3
	Welkom	2 581	8,2		Nsikiza	2 271	9,1
	Witsieshoek	3 595	11,4		Ermelo	1 453	5,8
	Kroonstad	2 097	6,7		Moretele II	1 920	7,7
	Botshabelo	2 069	6,6		Nkomazi	1 416	5,7
	Subtotal	15 903	50,6		Highveld Ridge	1 320	5,3
	Other districts	15 546	49,4		Subtotal	10 465	41,8
	Total	31 449	100,0		Other districts	14 548	58,2
			Total	25 013	100,0		
KwaZulu-Natal	Durban	11 940	14,1	Northern Province	Pietersburg	1 853	7,5
	Pietermaritzburg	8 368	9,9		Potgietersrus	1 934	7,8
	Inanda	4 775	5,6		Thohoyandou	1 767	7,1
	Lower Umfolozi	3 297	3,9		Nebo	1 784	7,2
	Chatsworth	3 757	4,4		Mapulaneng	1 376	5,5
	Port Shepstone	3 110	3,7		Thabamoopo	1 268	5,1
	Subtotal	35 247	41,5		Subtotal	9 982	40,2
	Other districts	49 661	58,5		Other districts	14 821	59,8
Total	84 908	100,0	Total	24 803	100,0		
Northern Cape	Kimberley	3 095	32,9				
	Gordonia	1 524	16,2				
	Subtotal	4 619	49,1				
	Other districts	4 796	50,9				
Total	9 415	100,0					

5.4 National and provincial age pattern of recorded deaths

In this section, the national pattern is first described in detail. The provincial patterns are subsequently described relative to their similarity or dissimilarity to the national pattern.

Figure 8a shows the graphs for the number of recorded deaths for males in South Africa whose details are on the population register, and Figure 8b shows the proportions of such deaths in the different age groups. Figures 9a and 9b show similar graphs for female deaths in numbers and proportions respectively. The graphs (in numbers as well as in proportions) for all the provinces are shown in Figures 9a to 23b.

Figures 8a and 9a show that there were increases in the number of deaths for males as well as for females, in almost all age groups over the period 1997-2000. Figures 8b and 9b on the other hand show difference in the magnitude of increase by age group. For males as well as for females, the highest increases were in the 25-54 age ranges and the age group 80 and over. Large increases also occurred in the 60-64 and the 70-74 age ranges. As proportions capture the increase in certain age groups relative to others, the highest percentage increases occurred in the smaller band of age ranges; 30-44 in males and 25-39 in females. For the higher age groups, the proportions decreased with time.

This national pattern is more or less similar to the pattern exhibited by Free State, KwaZulu-Natal, North West and Mpumalanga. There are a few exceptions. Firstly, in the Free State and KwaZulu-Natal there was little increase in deaths in the older age groups among males. Secondly, in the North West there was an increase in all adult age groups among males and females, although relatively more so in the 25-49 age range for males and the 25-44 range for females.

In the case of Western Cape, Eastern Cape, Northern Cape and Northern Province the age-pattern of mortality exhibited is different from the national pattern. In Western Cape there was a uniform increase in death in all adult age groups. The uniformity is more remarkable for females than males. For females the proportion of deaths in the different age groups for the different years cluster around a small band and are remarkably close to each other. In Eastern Cape, the increases in deaths were large and uniform for males, but for females the increases were generally smaller in magnitude and in addition, there was a slightly higher increase in the age group 25-39, starting from 1999. The graphs for the percentages of deaths in the different age groups show a clustering for the different years, with the exception of the year 2000. The pattern found among females of Eastern Cape is slightly similar to that among females of Northern Cape. For males of Northern Cape the pattern of increase is clearly not uniform but different from the national pattern. For Northern Province, the graphs for males show relatively large increases for all adult ages, with the exception of the age group 65-69. For females of Northern Province, the pattern exhibited by the graph is broadly similar to that of females of Eastern Cape.

The case of Gauteng is a special case. The graphs present a combination of an attenuated form of the national pattern and uniform increase across all adult age groups. The latter feature is more prominent than the former in the case of females. For males the uniform increase feature is more prominent in the 1997-1998 period and the higher increase in deaths in the young adult ages (25-39) is more prominent in the 1998-2000 period.

5.5 Areas for further research

Of immediate relevance is the contribution of deaths due to HIV/AIDS to the observed changes in levels and age patterns of mortality. In the absence of data on accurately reported causes of death, this would not be resolved in a straightforward manner. There would be a need for some assumptions to be made and to resort to some amount of modelling. These are being addressed in a separate forthcoming discussion document.



PP
P J Lehohla
Statistician General: Statistics South Africa

Fig. 1: Recorded number of deaths by month of death, SA, 1997-2000

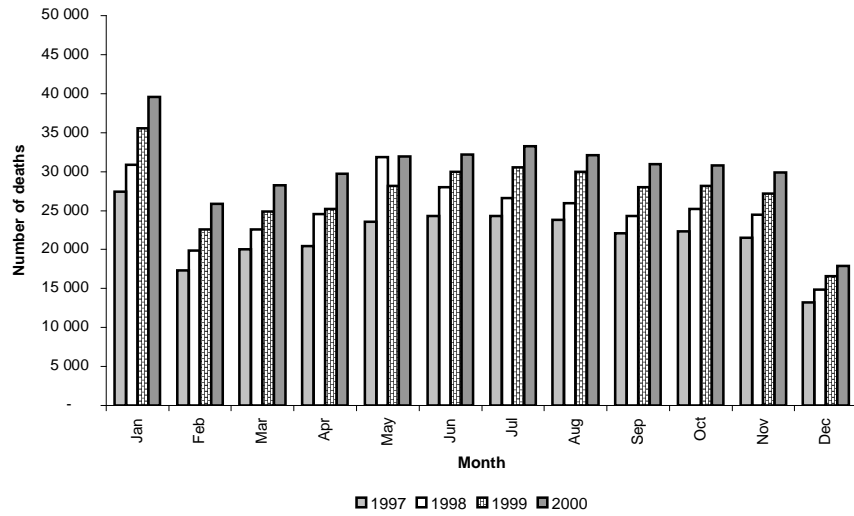


Fig. 2: Recorded number of deaths by year of deaths among males and females, 1997-2000

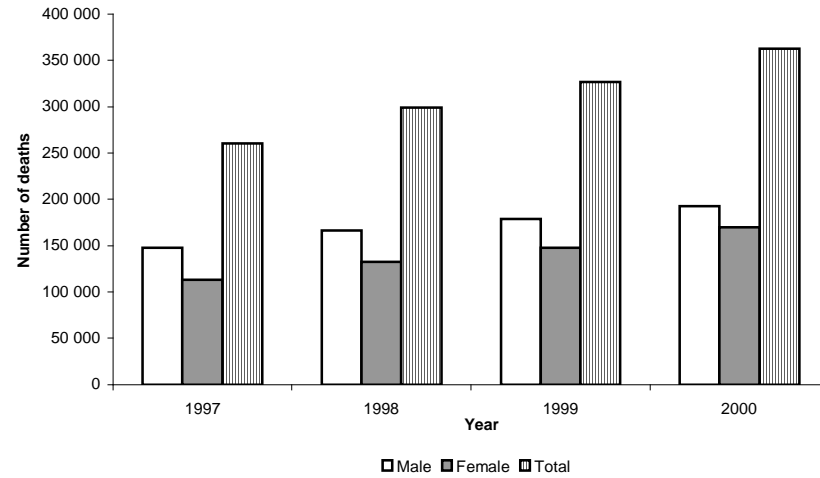


Fig. 3: Recorded number of deaths by province, 1997

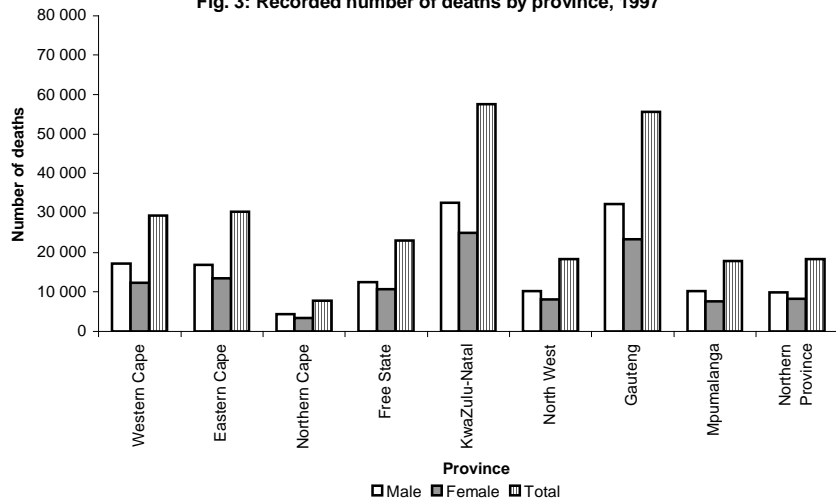


Fig. 4: Recorded number of deaths by province, 1998

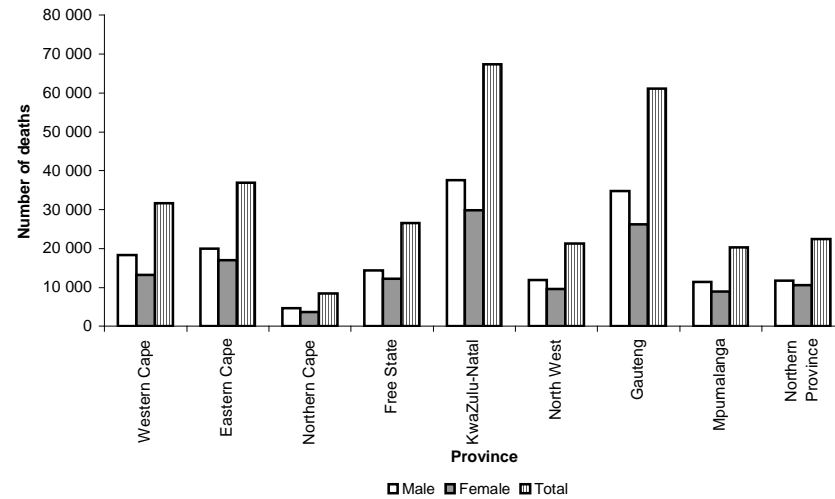


Fig. 5: Recorded number of deaths by province, 1999

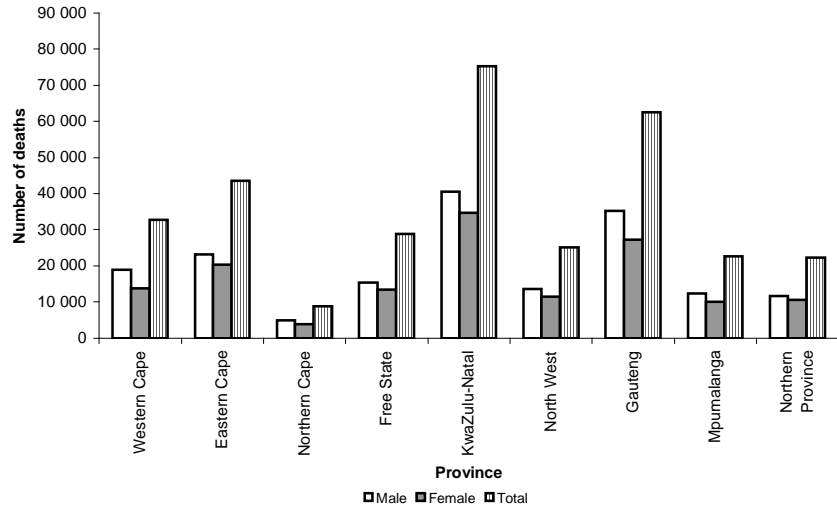


Fig. 6: Recorded number of deaths by province, 2000

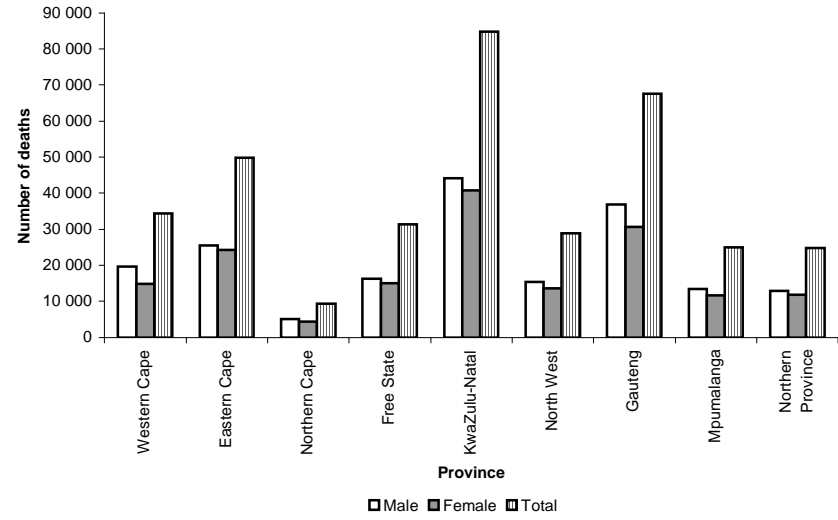


Fig. 7a: Recorded number of deaths among males by province, 1997-2000

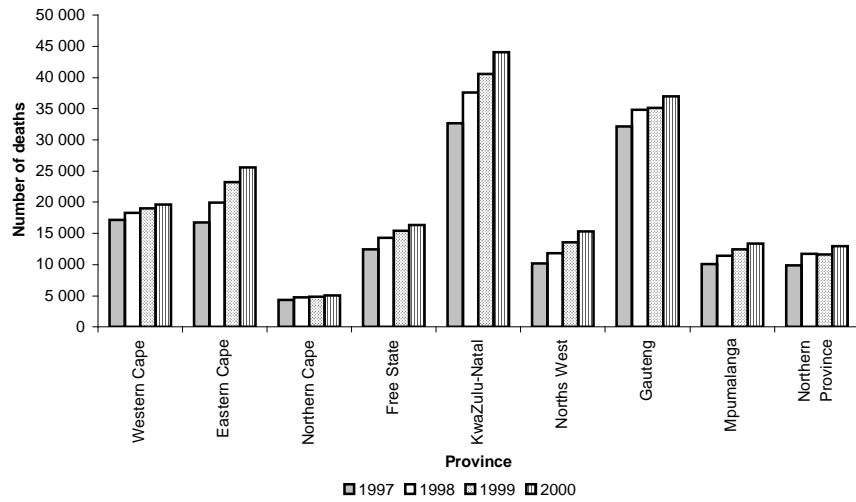


Fig. 7b: Recorded number of deaths among females by province, 1997-2000

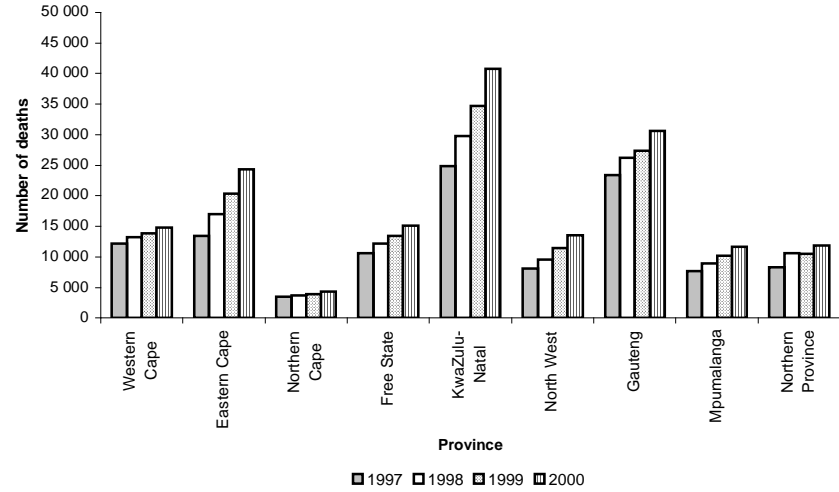


Fig. 8a: Recorded number of deaths by age, males, South Africa, 1997-2000

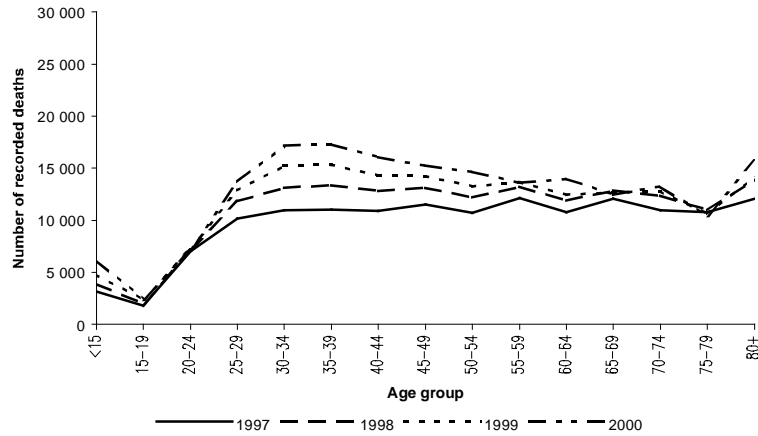


Fig. 8b: Percentage of deaths at different age groups, males, South Africa, 1997-2000

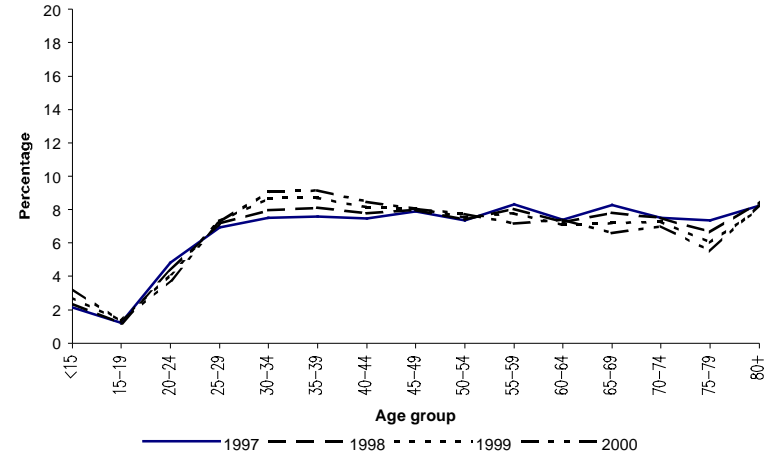


Fig. 9a: Recorded number of deaths by age at death, females, South Africa, 1997-2000

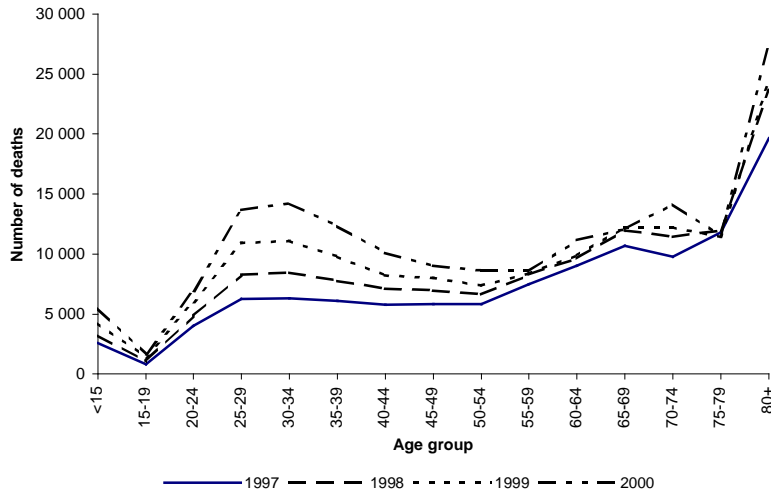


Fig. 9b: Percentage of deaths at different age groups, females, South Africa, 1997-2000

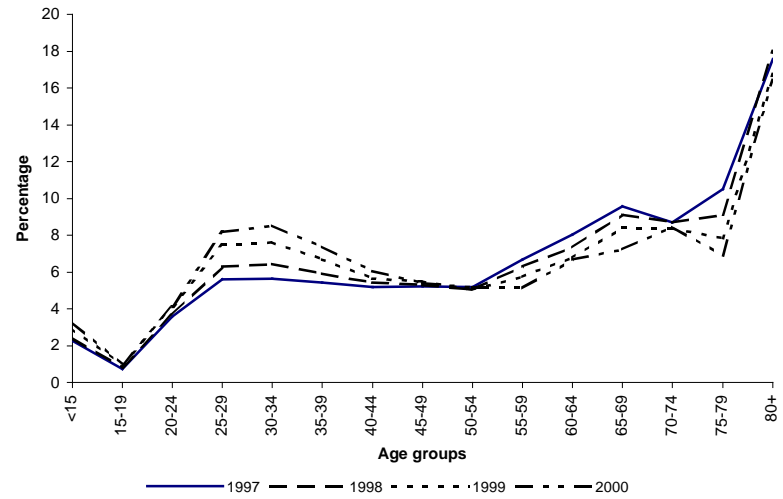


Fig. 10a: Recorded number of deaths by age at death among males, Western Cape, 1997-2000

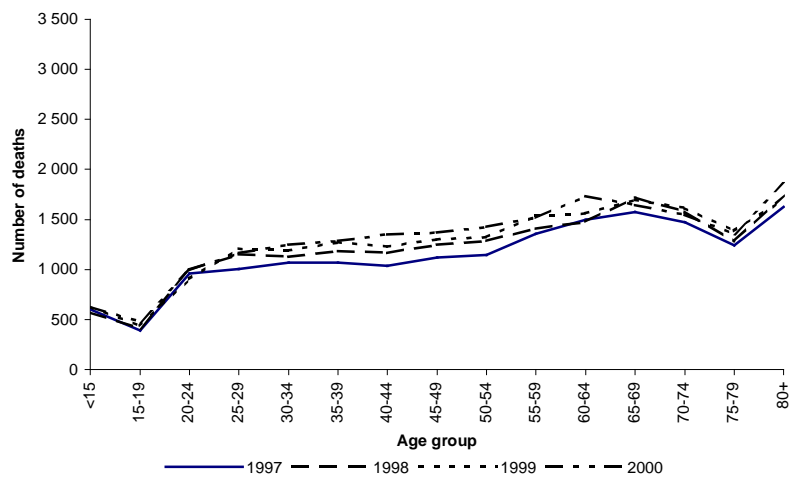


Fig. 10b: Percentage of deaths at different age groups, males, Western Cape, 1997-2000

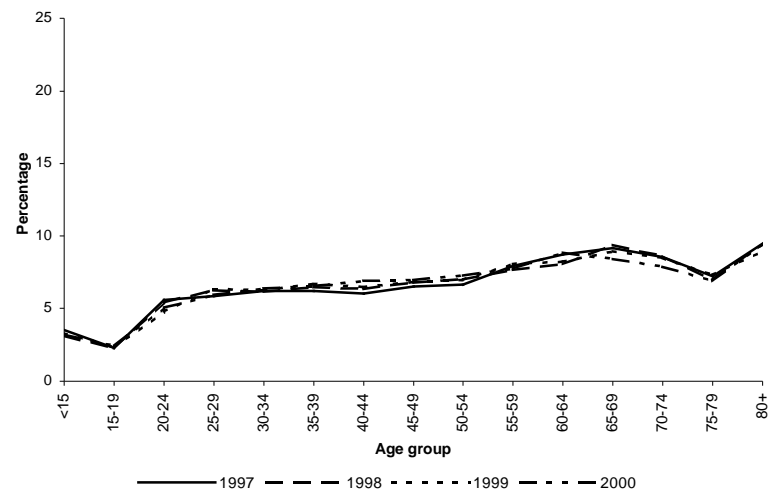


Fig. 11a: Recorded number of deaths by age at death among females, Western Cape, 1997-2000

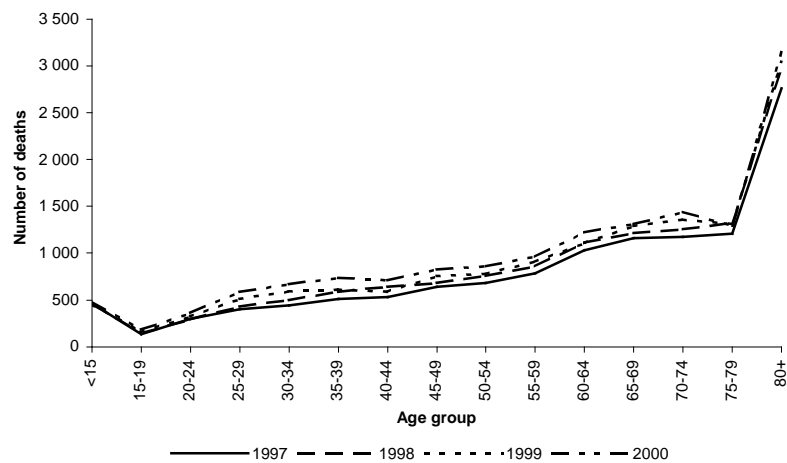


Fig. 11b: Percentage of deaths at different age groups, females, Western Cape, 1997-2000

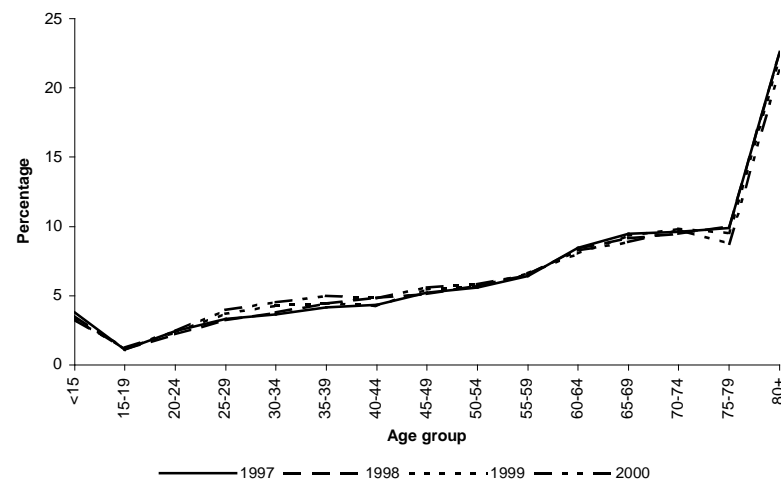


Fig. 12a: Recorded number of deaths by age at death among males, Eastern Cape, 1997-2000

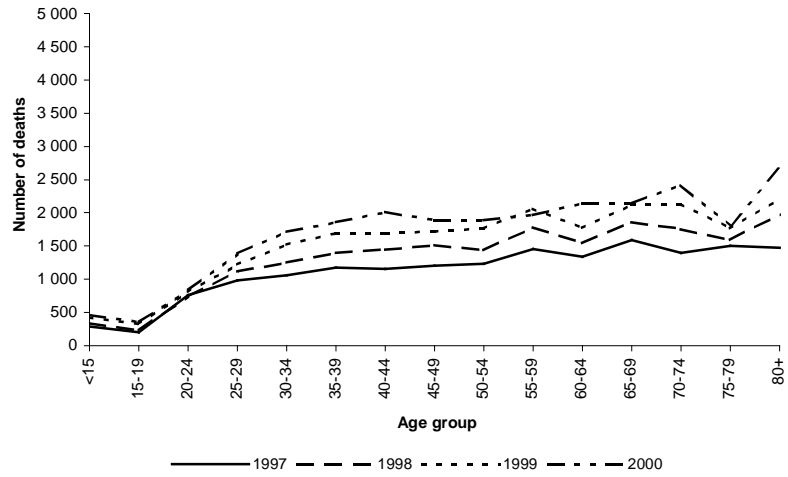


Fig. 12b: Percentage of deaths at different age groups, males, Eastern Cape, 1997-2000

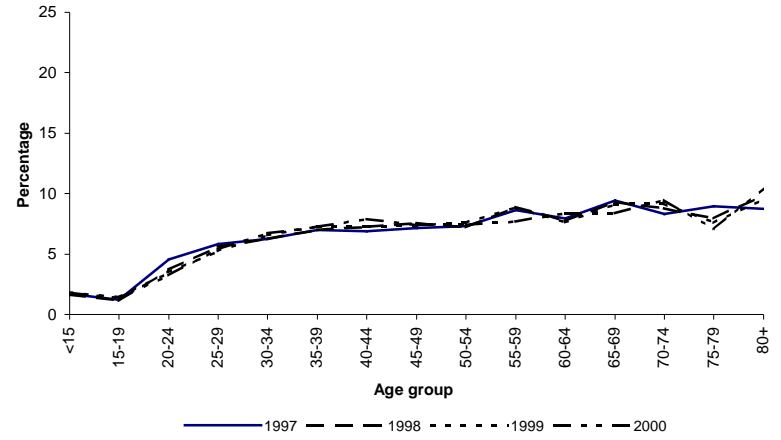


Fig. 13a: Recorded number of deaths by age at death among females, Eastern Cape, 1997-2000

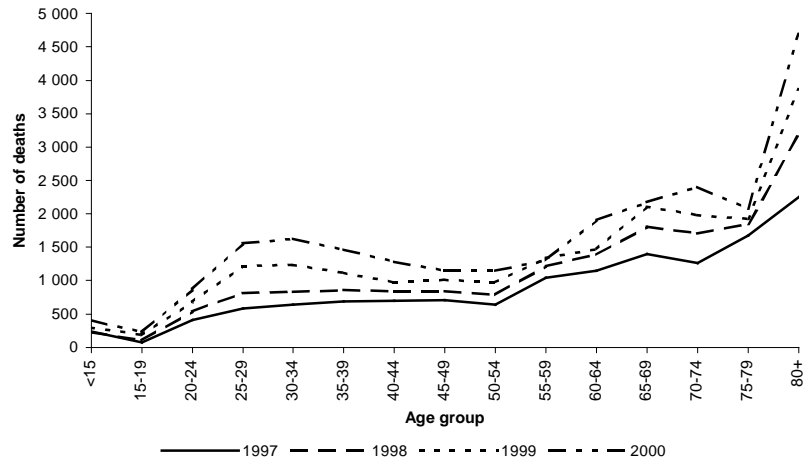


Fig. 13b: Percentage of deaths at different age groups, females, Eastern Cape, 1997-2000

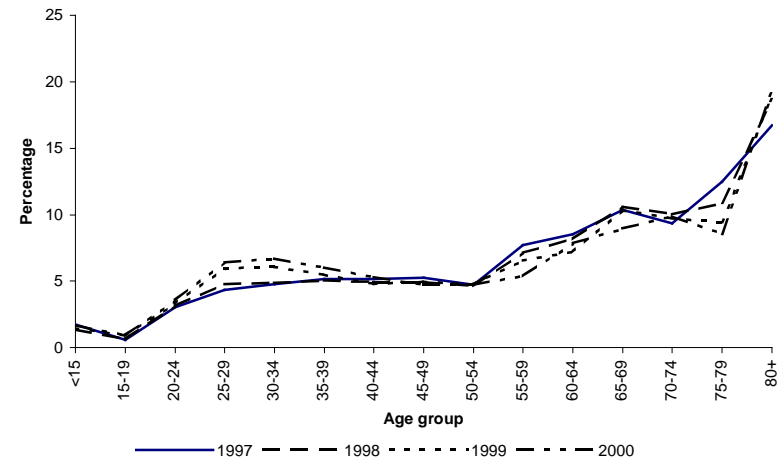


Fig. 14a: Recorded number of deaths by age at death among males, Northern Cape, 1997-2000

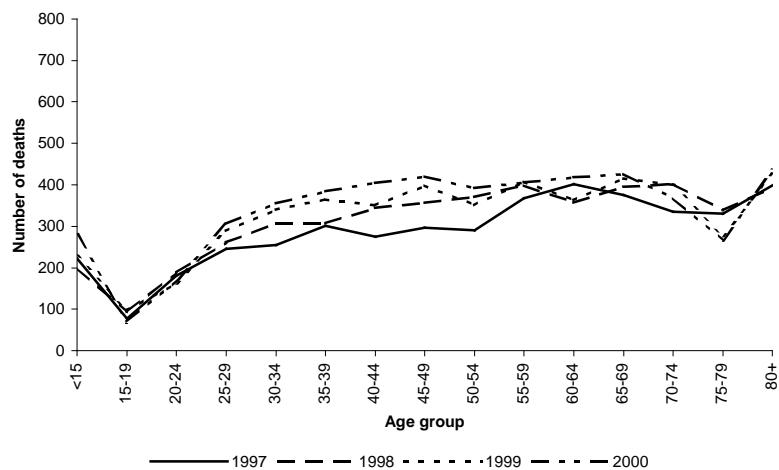


Fig. 14b: Percentage of deaths at different age groups, males, Northern Cape, 1997-2000

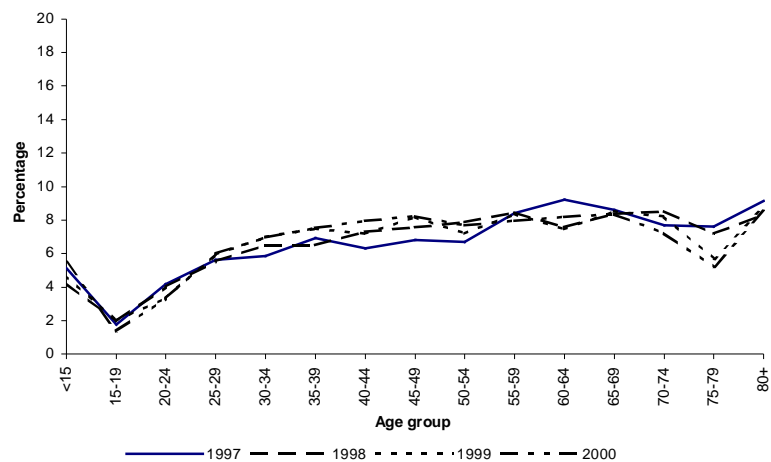


Fig. 15a: Recorded number of deaths by age at death among females, Northern Cape, 1997-2000

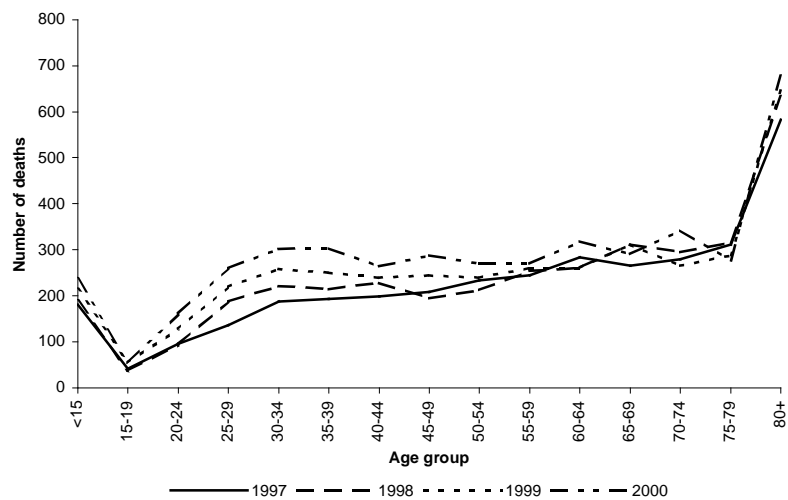


Fig. 15b: Percentage of deaths at different age groups, females, Northern Cape, 1997-2000

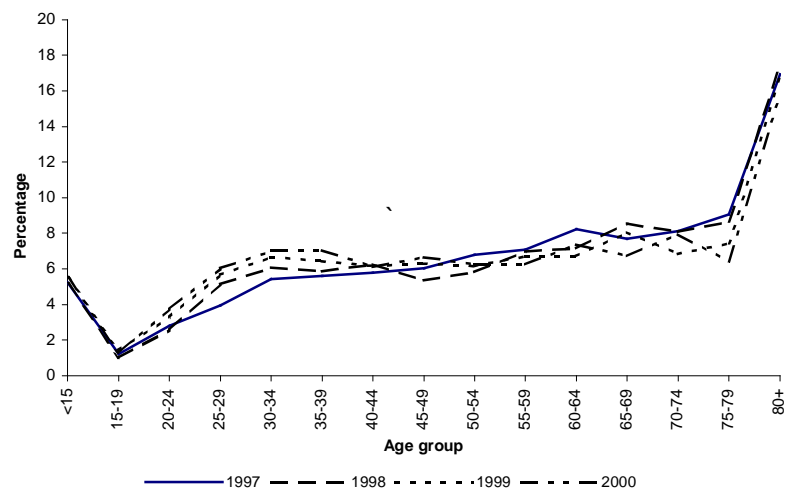


Fig. 16a: Recorded number of deaths by age at death among males, Free State, 1997-2000



Fig. 16b: Percentage of deaths at different age groups, males, Free State, 1997-2000

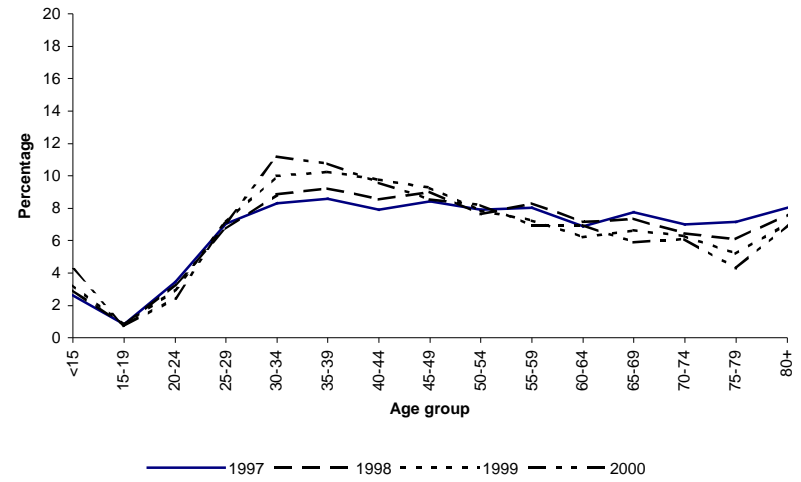


Fig. 17a: Recorded number of deaths by age at death among females, Free State, 1997-2000

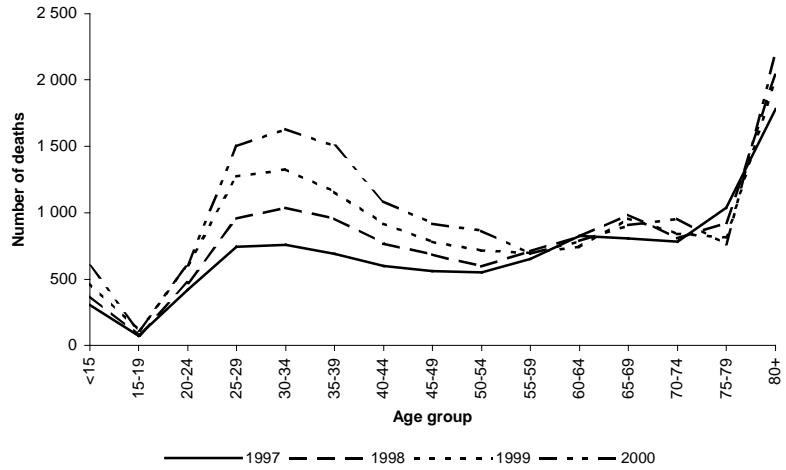


Fig. 17b: Percentage of deaths at different age groups, females, Free State, 1997-2000

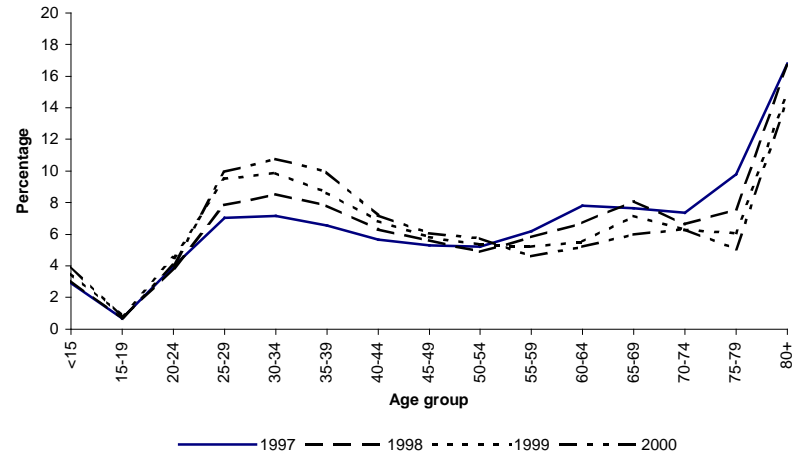


Fig. 18a: Recorded number of deaths by age at death among males, KwaZulu-Natal, 1997-2000

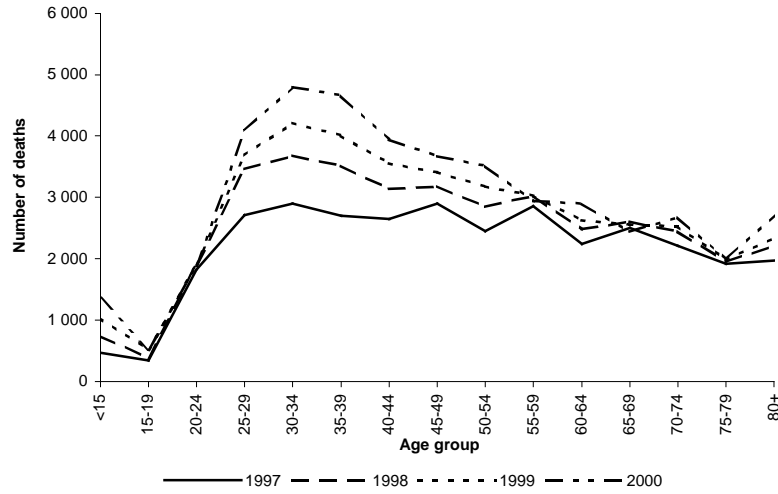


Fig. 18b: Percentage of deaths at different age groups, males, KwaZulu-Natal, 1997-2000

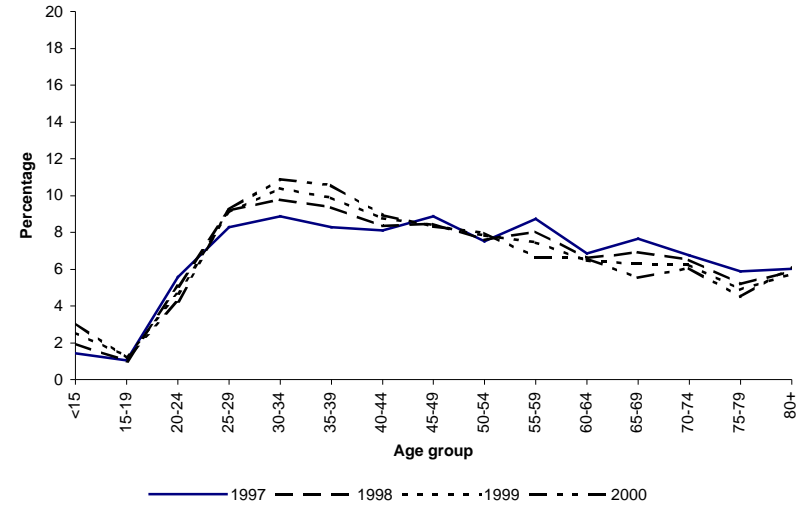


Fig. 19a: Recorded number of deaths by age at death among females, KwaZulu-Natal, 1997-2000

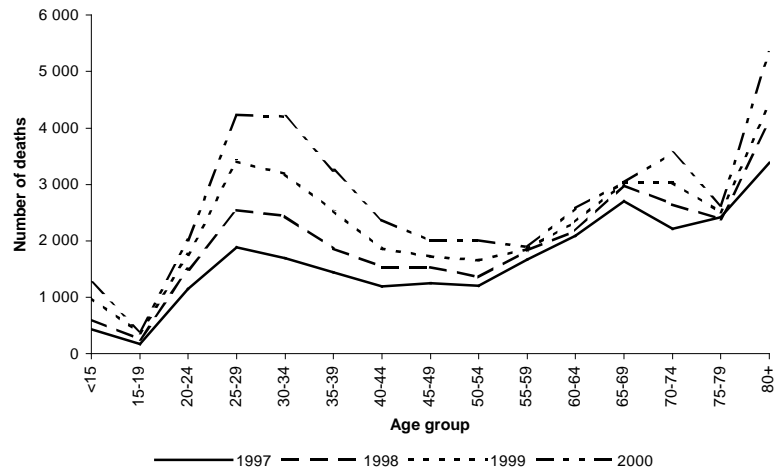


Fig. 19b: Percentage of deaths at different age groups, females, KwaZulu-Natal, 1997-2000

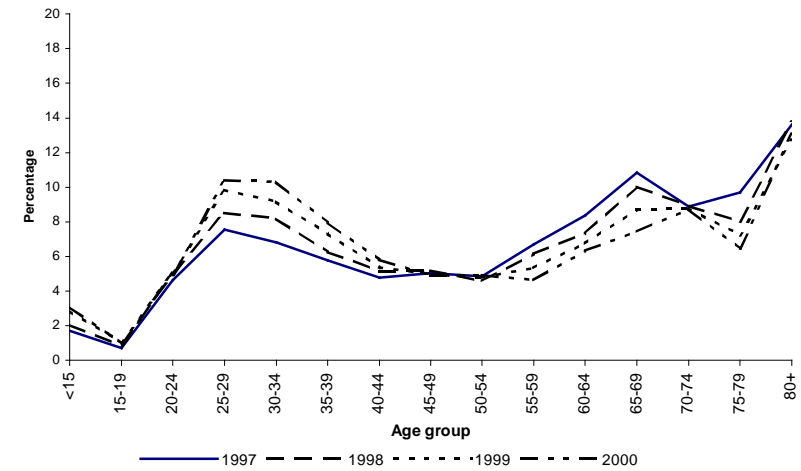


Fig. 20a: Recorded number of deaths by age at death among males, North West, 1997-2000

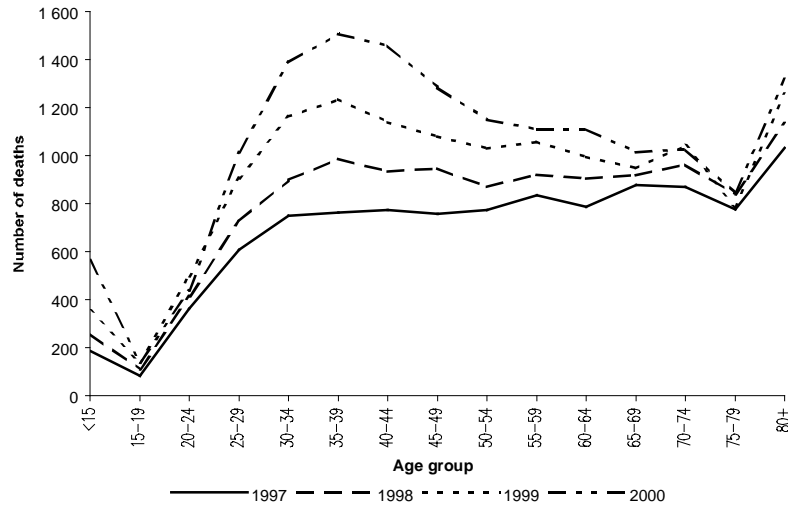


Fig. 20b: Percentage of deaths at different age groups, males, North West, 1997-2000

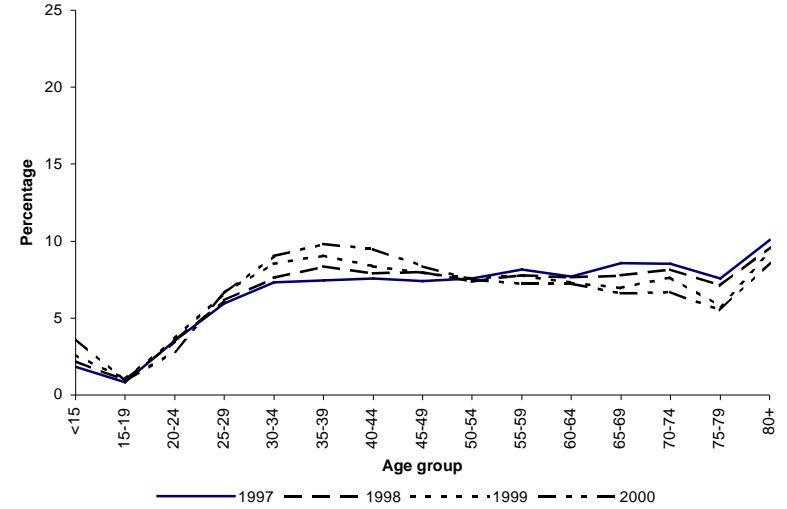


Fig. 21a: Recorded number of deaths by age at death among females, North West, 1997-2000

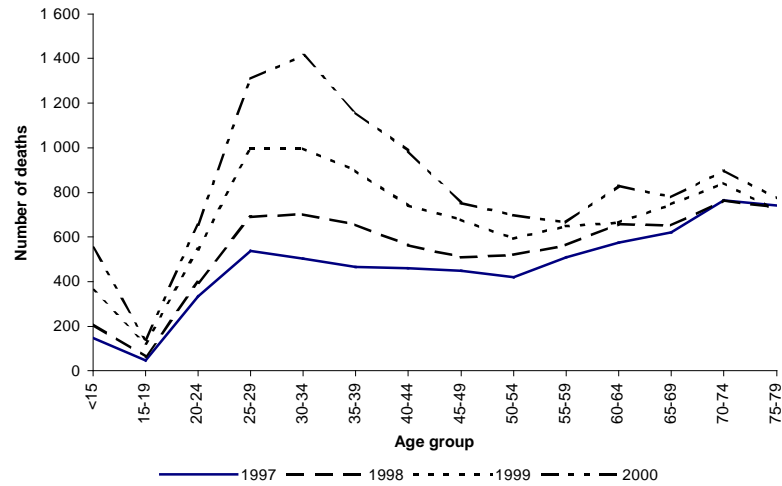


Fig. 21b: Percentage of deaths at different age groups, females, North West, 1997-2000

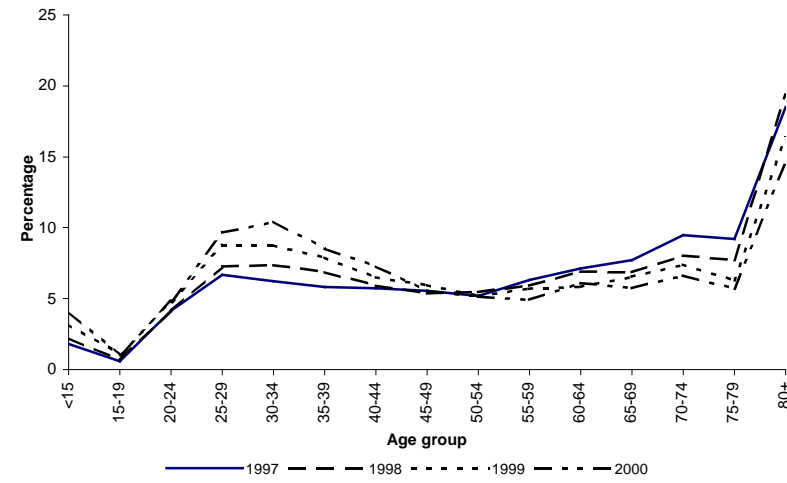


Fig. 22a: Recorded number of deaths by age at death among males, Gauteng, 1997-2000

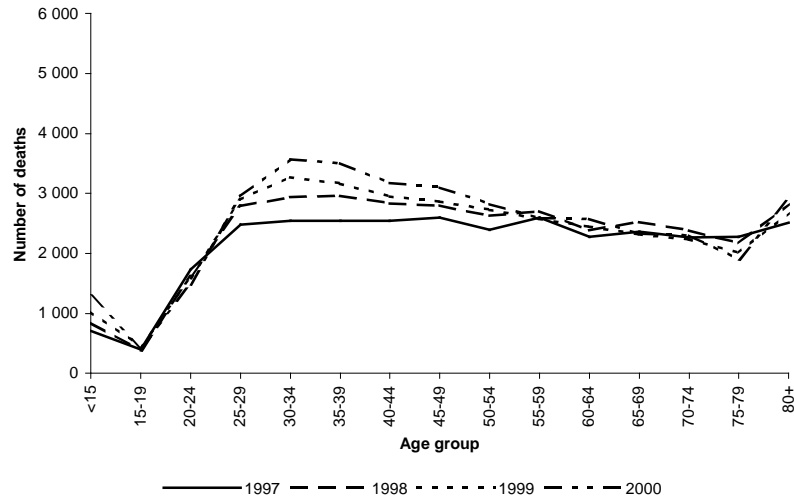


Fig. 22b: Percentage of deaths at different age groups, males, Gauteng, 1997-2000

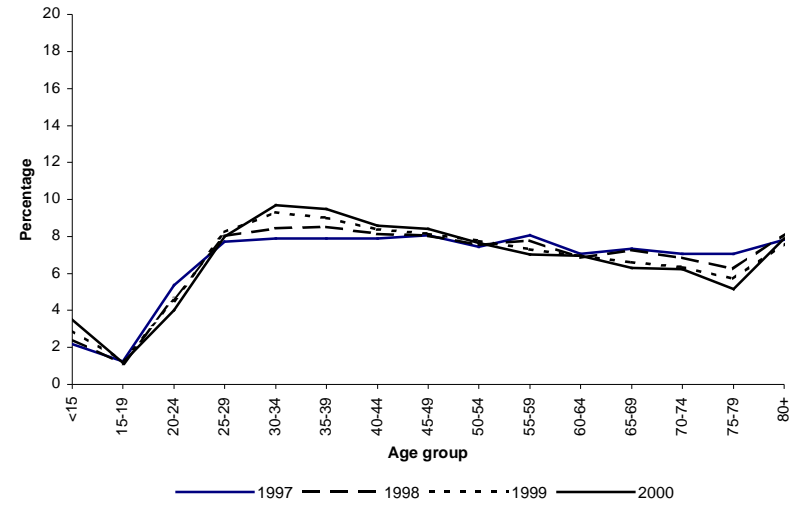


Fig. 23a: Recorded number of deaths by age at death among females, Gauteng, 1997-2000

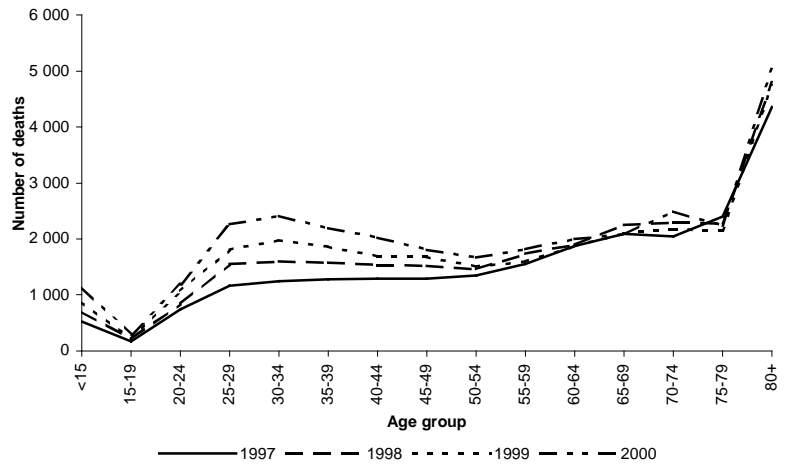


Fig. 23b: Percentage of deaths at different age groups, females, Gauteng, 1997-2000

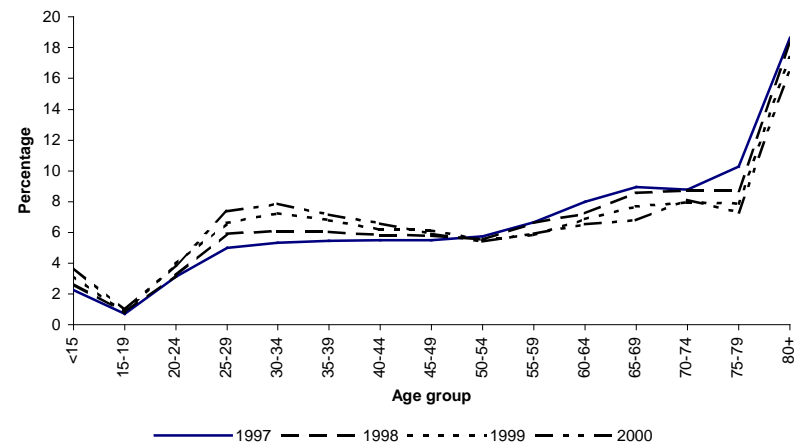


Fig. 24a: Recorded number of deaths by age at death among males, Mpumalanga, 1997-2000



Fig. 24b: Percentage of deaths at different age groups, males, Mpumalanga, 1997-2000

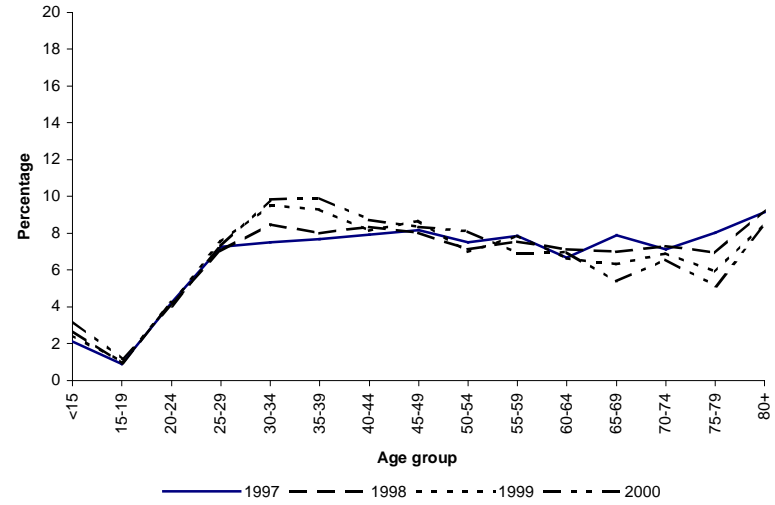


Fig. 25a: Recorded number of deaths by age at death among females, Mpumalanga, 1997-2000

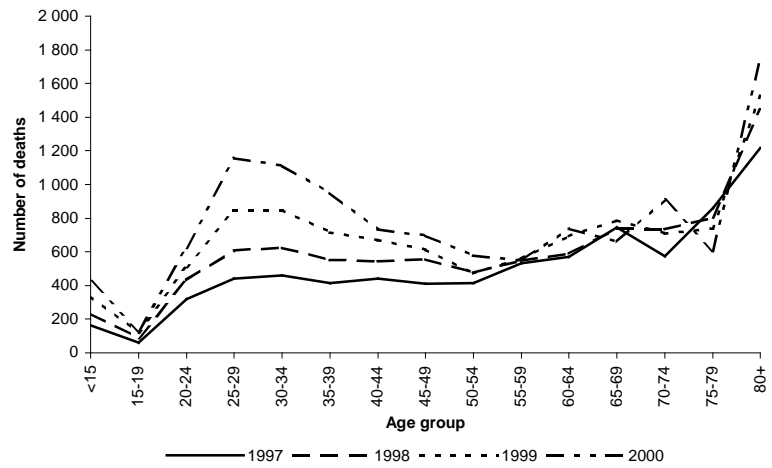


Fig. 25b: Percentage of deaths at different age groups, females, Mpumalanga, 1997-2000

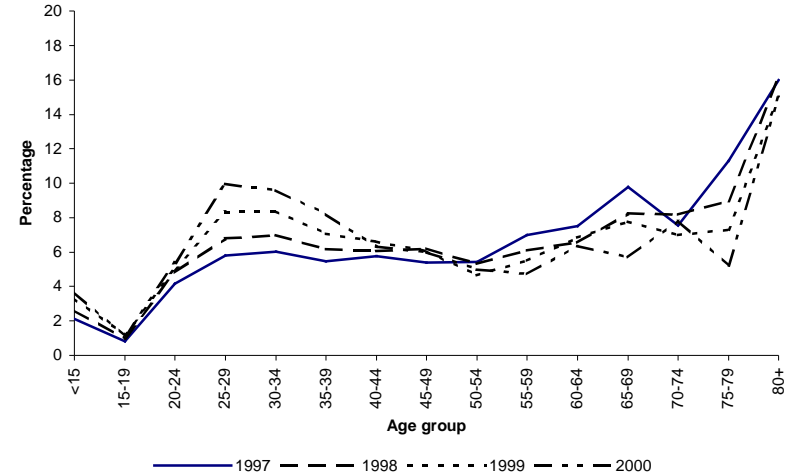


Fig. 26a: Recorded number of deaths by age at death among males, Northern Province, 1997-2000



Fig. 26b: Percentage of deaths at different age groups, males, Northern Province, 1997-2000

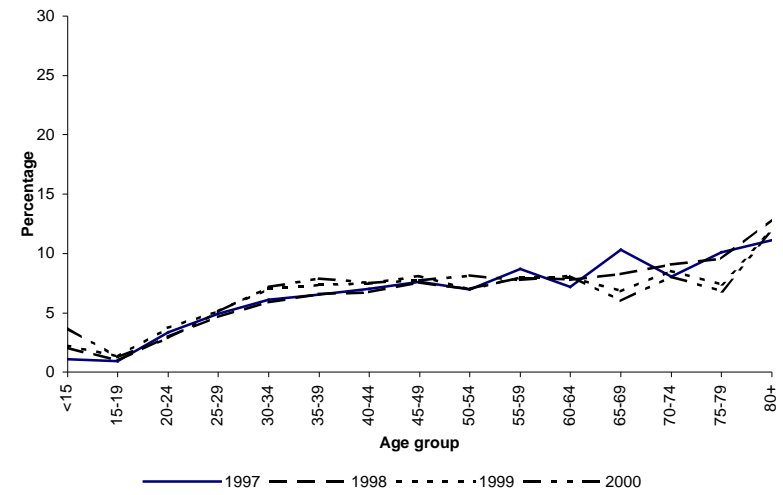


Fig. 26a: Recorded number of deaths by age at death among males, Northern Province, 1997-2000

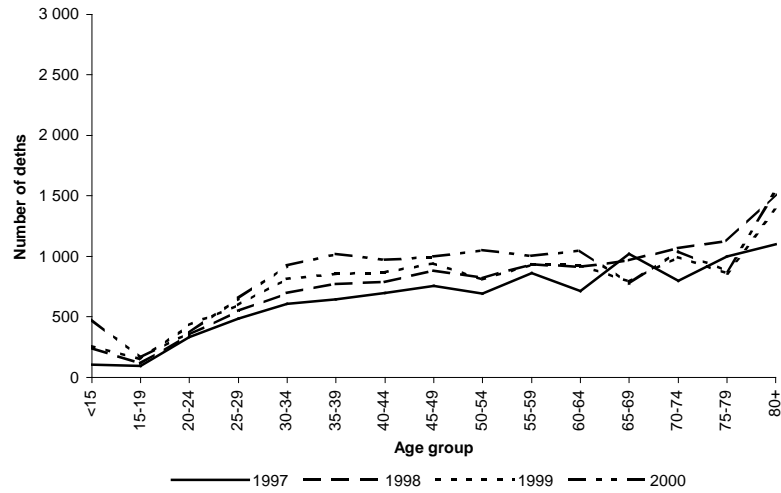
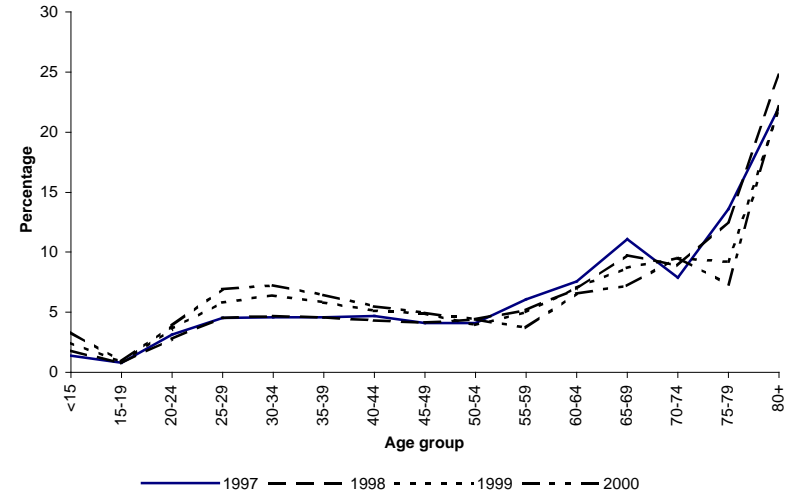


Fig. 27b: Percentage of deaths at different age groups, females, Northern Province, 1997-2000



6. EXPLANATORY NOTES

6.1 The South African population register

The death statistics that are reported in this release are occurrence-based and were extracted from the population register as at 05 March 2001. The clerks at the various offices of the Department of Home Affairs (DHA) capture the information on a death directly onto the database at Nucleus Bureau. These transactions are used to update the population register database.

The South African population register records births, deaths, identity, marriages, divorces and migration of all South African citizens and permanent residents. Thus, each of the Acts dealing with any aspect of civil registration has implications for the information inputted onto the Population Register. The Births and Deaths Registration Act, 1992 (Act No. 51 of 1992) guides the registration of births and death throughout South Africa. The Births and Deaths Registration, 1992 (Act No. 51 of 1992) was subsequently amended in 1997 (Act No. 67 of 1997) and in 1998 (Act No. 43 of 1998). Another Act that is pertinent to the population register is the Identification Act that was passed in 1997 (Act No. 68 of 1997). This Act repealed previous Identification Acts (Act No.72 of 1986, Act No. 21 of 1991, Act No. 4 of 1993 and Act No. 47 of 1995). From these various Acts and amendments, the following are applicable to those persons whose particulars are eligible to be included on the population register:

- All children born of South African citizens and permanent residents when the notice of the birth is given within one year after the birth of the child.
- All children born of South African citizens and permanent residents when the notice of the birth is given one year after the birth of the child, together with the prescribed requirement for a late registration of birth.
- All South African citizens and permanent residents who upon attainment of the age of 16 years applied for and were granted identification cards.
- All South African citizens and permanent residents who die at any age after birth.
- All South African citizens and permanent residents who depart permanently from South Africa.

Persons whose particulars are not eligible for inclusion on the population register are listed below:

- Non-South African citizens who sojourn temporarily in the country.
- All South African citizens and permanent residents who died before notice of his/her birth had been given.

The population register file received by Stats SA contained all registered deaths between 01 January 1996 till 05 March 2001. The sex of the deceased had to be derived from the identity number. This, however, is not a straightforward procedure as the South African registration system has changed a lot over the years. In the case of certain population subgroups, the position of the sex variable on the ID number changed as well as the values allocated to males and females. The variables extracted from the population register were the following: place of death, ID number, date of death, date of birth and cause of death.

6.2 Deriving the sex of the deceased from the ID number

Even though many old identity documents have been handed in and replaced by new ones, there are still many old identity documents in use. The changes in the structure of the identity numbers pose quite a challenge in determining the sex of the deceased from the identity number given in the population register dataset. These changes are described below and summarised in Table G.

In terms of the Population Registration Act, 1950 (Act No. 30 of 1950), identity cards were issued to whites, coloureds and Indians/Asians. This was a green, hard plastic type card. The sex of the holder was printed in text (e.g. Manlik-Male) in the middle of the card. In 1952 Africans/blacks were issued with reference books as identity documents with the reference book number comprising of nine digits. The first two digits help identify the sex of the person. Males could be identified with the number '1' in the first position, while females could be identified with a '5' in the first position, followed by an hyphen. This ID numbering system was maintained until 1972 when a new set of identity books was issued to whites, coloureds and Asians. This identity document became known as the blue identity document. The blue book contained a thirteen-digit ID number. The 7th digit indicated the sex, and had '0' for female and '5' for male. In 1986 the Identification Act was passed and it repealed all the amendments of the 1950 Identification Act. While the number of fields in new ID number remained 13, the structure adopted was that the 12th digit of the identity document will always be an '8'. Males can be identified by any number falling within the range 5-9 in the 7th position of the 13-digit ID field. The numbers 0-4 being the 7th digit can identify females.

6.3 Comparability of data

While deaths data are available from both Stats SA and the population register for 1996, for subsequent years (1997-2000), deaths data are as yet only available from the population register. A comparison of the death statistics for 1996 with the 1996 administrative data from the population register will bring out the difference between occurrence-based and registration based statistics on death. During 1996, 327 253 deaths were registered in South Africa. Of these deaths, 33 119 (10,1%) were late registrations occurring in 1995 or earlier. The remaining number of reported deaths (294 134) were current registrations. According to the administrative data read off the register on 05 March 2001, there were 237 235 deaths in South Africa. One would expect that with regular updating of the population register, the number of deaths on the register would be at least 294 134. It would also be acceptable to expect that with regular updating of late registrations, the deaths on the register would be higher than 294 134. Table H below shows a comparison of 1996 registrations by age with 1996 occurrence based deaths.

Table H: Comparability ratios between Stats SA registered deaths and the DHA population register Deaths, 1996

Age in years	Male			Female		
	Population register	Stats SA data	Ratio Stats SA to DHA	Population register	Stats SA data	Ratio Stats SA to DHA
(0-1)	905	12 979	14,3414	856	11 581	13,5292
(1-4)	892	4 313	4,8352	754	3 739	4,9589
0-4	1 797	17 292	9,6227	1 610	15 320	9,5155
5-9	449	1 816	4,0445	299	1 282	4,2876
10-14	335	1 602	4,7821	237	1 156	4,8776
15-19	1 801	4 334	2,4064	795	2 455	3,0881
20-24	6 750	9 347	1,3847	3 369	4 910	1,4574
25-29	8 950	11 477	1,2823	4 895	6 213	1,2693
30-34	9 812	12 709	1,2953	5 265	6 549	1,2439
35-39	9 442	11 953	1,2659	5 037	6 296	1,2500
40-44	9 822	12 328	1,2551	5 023	6 234	1,2411
45-49	10 428	12 895	1,2366	5 323	6 364	1,1956
50-54	10 170	12 366	1,2159	5 260	6 451	1,2264
55-59	11 179	13 715	1,2269	7 215	8 523	1,1813
60-64	9 994	12 084	1,2091	8 292	9 891	1,1928
65-69	11 813	13 942	1,1802	10 152	12 023	1,1843
70-74	10 491	12 274	1,1700	8 877	10 543	1,1877
75-79	10 347	11 837	1,1440	11 294	13 365	1,1834
80-84	6 367	7 376	1,1585	8 153	9 761	1,1972
85+	5 504	6 443	1,1706	10 688	12 750	1,1929
Total	135 451	185 790	1,3716	101 784	140 086	1,3763

A comparison of the population register data with Stats SA data shows two distinct features. Firstly, for all the age groups, the population register are consistently lower than those of Stats SA data. Secondly, for ages below 15, the data are considerable lower than those of Stats SA. Because of the low representation of age group <15 in the population register data, the conventional ages groups for reporting death (<1, 1-4, 5-9 and 10-14) have been grouped together in the <15 age group. The ratio of Stats SA to the population register data was computed for all age groups. If necessary, these ratios could be used to adjust the population register data to the level of Stats SA for the years 1997-2000.

A comparison of the 1996 Stats SA and population register figures was done by magisterial district at death (not shown). The comparison shows that in most cases, the population register data are consistently lower than the Stats SA data. In a few cases, the population register data were found to be higher than the Stats SA data. This was found to be the case in Mapulaneng, Potgietersrus and Warmbad in Northern Province; Morelete II and Moutse in Mpumalanga; Brakpan, Johannesburg and Pretoria in Gauteng; Durban in KwaZulu-Natal; Bloemfontein, Bethlehem, Kroonstad and Thaba Nchu in the Free State, Kimberley in Northern Cape; Maluti in Eastern Cape; Bellville and Cape Town in Western Cape.

6.4 DEFINITIONS OF CONCEPTS USED

1. **A death** is a principal vital event and is the disappearance of all evidence of life at any time after a live birth has taken place. Recorded deaths do not include stillbirths.
2. **Recorded deaths** indicate the number of deaths that occurred in a specific year. The statistics presented here have been partially updated for late registration. The deaths recorded in any given year include the deaths that occurred during the current year plus other deaths that occurred in years prior to the year of registration. The population register updates the registrations in the year in which the death occurred. It should be noted that not all deaths are recorded (registered).
3. **Population group** – As from 1991 no distinction is made between the different population groups in the information collected by the Department of Home Affairs. The statistics collected, therefore, refer to all population groups combined.
4. **Magisterial districts** – The 1994 twelfth edition of the *Standard Code List of Areas*, Statistics South Africa Report No. 09-09-03 (1994) was used as the basis for coding the place of death into magisterial districts. However, as informants often provide placenames that may be valid but no longer be in use, other code lists dating as far back as 1969 were used. These were enhanced by postal code lists, hospital lists and other place name lists.
5. **Stillbirth** – A stillbirth is a death prior to the expulsion or extraction from its mother's womb of a product of conception, irrespective of duration of pregnancy. The death is indicated by that after such separation, the child does not breathe or show other evidence of life. Prior to 1997 stillbirths were reported as a separate column but in the same release as live births. Stillbirths for 1997 and later years are now to be published in a separate statistical release.

6. Abbreviations used

UNSPEC.	= Unspecified
WC	= Western Cape
EC	= Eastern Cape
NC	= Northern Cape
FS	= Free State
KZN	= KwaZulu-Natal
NW	= North West
GP	= Gauteng
MP	= Mpumalanga
NP	= Northern Province

1. RECORDED DEATHS

1.1 PROVINCE BY AGE AT DEATH, 1997

1.1.1 TOTAL

AGE GROUP	TOTAL	PROVINCE OF DEATH										
		WC	EC	NC	FS	KZN	NW	GP	MP	NP	FOREIGN	UNSPEC.
TOTAL	260 373	29 384	30 248	7 792	23 055	57 533	18 286	55 564	17 738	18 227	305	2 241
<15	5 711	1 066	522	403	631	900	333	1 228	375	221	4	28
15-19	2 643	526	282	119	179	519	129	565	152	159	3	10
20-24	11 096	1 259	1 176	277	852	2 973	698	2 462	748	595	9	47
25-29	16 507	1 410	1 566	381	1 619	4 592	1 144	3 649	1 177	861	16	92
30-34	17 439	1 512	1 698	442	1 795	4 593	1 250	3 788	1 217	988	30	126
35-39	17 269	1 574	1 863	495	1 764	4 145	1 228	3 818	1 193	1 027	33	129
40-44	16 860	1 569	1 847	474	1 589	3 836	1 233	3 830	1 243	1 084	22	133
45-49	17 507	1 759	1 911	504	1 613	4 153	1 205	3 879	1 237	1 095	22	129
50-54	16 713	1 825	1 868	525	1 540	3 661	1 193	3 740	1 172	1 031	28	130
55-59	19 806	2 141	2 490	611	1 653	4 527	1 343	4 150	1 328	1 365	18	180
60-64	20 010	2 531	2 485	684	1 684	4 324	1 360	4 146	1 245	1 342	22	187
65-69	22 992	2 731	2 981	640	1 773	5 194	1 498	4 451	1 542	1 942	29	211
70-74	20 898	2 642	2 655	614	1 654	4 424	1 633	4 317	1 294	1 454	22	189
75-79	22 799	2 449	3 182	643	1 928	4 337	1 516	4 674	1 673	2 126	21	250
80+	32 123	4 390	3 722	980	2 781	5 355	2 523	6 867	2 142	2 937	26	400

1. RECORDED DEATHS

1.1 PROVINCE BY AGE AT DEATH, 1997

1.1.2 MALE

AGE GROUP	TOTAL	PROVINCE OF DEATH										
		WC	EC	NC	FS	KZN	NW	GP	MP	NP	FOREIGN	UNSPEC.
TOTAL	147 331	17 166	16 797	4 352	12 465	32 648	10 228	32 211	10 120	9 917	197	1 230
<15	3 133	604	287	223	324	471	187	702	214	108	1	12
15-19	1 797	393	204	77	107	346	83	395	91	94	2	5
20-24	7 050	959	763	181	432	1 824	363	1 727	430	334	6	31
25-29	10 196	1 007	980	245	876	2 709	608	2 484	736	486	11	54
30-34	11 081	1 066	1 054	255	1 038	2 901	748	2 543	759	607	25	85
35-39	11 152	1 066	1 171	302	1 071	2 705	761	2 539	778	647	23	89
40-44	11 019	1 039	1 154	275	988	2 644	772	2 542	803	697	20	85
45-49	11 609	1 120	1 206	296	1 051	2 902	758	2 594	828	755	15	84
50-54	10 844	1 145	1 231	291	989	2 452	774	2 396	758	691	24	93
55-59	12 246	1 358	1 452	367	999	2 857	834	2 596	795	861	11	116
60-64	10 902	1 498	1 339	401	858	2 239	786	2 276	674	715	14	102
65-69	12 166	1 573	1 585	375	965	2 497	878	2 362	797	1 020	13	101
70-74	11 061	1 469	1 395	335	873	2 210	870	2 268	720	800	12	109
75-79	10 874	1 241	1 504	331	892	1 922	775	2 274	813	999	11	112
80+	12 201	1 628	1 472	398	1 002	1 969	1 031	2 513	924	1 103	9	152

1. RECORDED DEATHS

1.1 PROVINCE BY AGE AT DEATH, 1997

1.1.3 FEMALE

AGE GROUP	TOTAL	PROVINCE OF DEATH										
		WC	EC	NC	FS	KZN	NW	GP	MP	NP	FOREIGN	UNSPEC.
TOTAL	113 042	12 218	13 451	3 440	10 590	24 885	8 058	23 353	7 618	8 310	108	1 011
<15	2 578	462	235	180	307	429	146	526	161	113	3	16
15-19	846	133	78	42	72	173	46	170	61	65	1	5
20-24	4 046	300	413	96	420	1 149	335	735	318	261	3	16
25-29	6 311	403	586	136	743	1 883	536	1 165	441	375	5	38
30-34	6 358	446	644	187	757	1 692	502	1 245	458	381	5	41
35-39	6 117	508	692	193	693	1 440	467	1 279	415	380	10	40
40-44	5 841	530	693	199	601	1 192	461	1 288	440	387	2	48
45-49	5 898	639	705	208	562	1 251	447	1 285	409	340	7	45
50-54	5 869	680	637	234	551	1 209	419	1 344	414	340	4	37
55-59	7 560	783	1 038	244	654	1 670	509	1 554	533	504	7	64
60-64	9 108	1 033	1 146	283	826	2 085	574	1 870	571	627	8	85
65-69	10 826	1 158	1 396	265	808	2 697	620	2 089	745	922	16	110
70-74	9 837	1 173	1 260	279	781	2 214	763	2 049	574	654	10	80
75-79	11 925	1 208	1 678	312	1 036	2 415	741	2 400	860	1 127	10	138
80+	19 922	2 762	2 250	582	1 779	3 386	1 492	4 354	1 218	1 834	17	248

1. RECORDED DEATHS

1.2 PROVINCE BY AGE AT DEATH, 1998

1.2.1 TOTAL

AGE GROUP	TOTAL	PROVINCE OF DEATH										
		WC	EC	NC	FS	KZN	NW	GP	MP	NP	FOREIGN	UNSPEC.
TOTAL	299 077	31 585	36 947	8 364	26 493	67 313	21 330	61 040	20 344	22 415	332	2 914
<15	7 150	1 040	565	389	793	1 342	467	1 540	539	435	6	34
15-19	3 019	557	340	130	187	634	174	595	194	194	3	11
20-24	12 085	1 288	1 276	283	945	3 400	810	2 459	908	647	17	52
25-29	20 251	1 581	1 930	449	1 918	5 995	1 416	4 345	1 411	1 032	35	139
30-34	21 779	1 628	2 077	528	2 303	6 116	1 599	4 534	1 590	1 192	40	172
35-39	21 304	1 773	2 257	521	2 272	5 374	1 639	4 544	1 461	1 260	33	170
40-44	20 158	1 810	2 284	572	1 992	4 672	1 496	4 370	1 494	1 252	23	193
45-49	20 275	1 927	2 348	552	1 973	4 718	1 454	4 318	1 466	1 328	23	168
50-54	18 996	2 044	2 227	583	1 686	4 213	1 389	4 087	1 288	1 292	17	170
55-59	21 695	2 268	2 996	653	1 898	4 853	1 482	4 440	1 406	1 488	24	187
60-64	21 749	2 588	2 936	618	1 843	4 664	1 560	4 288	1 398	1 653	21	180
65-69	25 131	2 932	3 665	707	2 037	5 588	1 570	4 772	1 535	2 011	26	288
70-74	24 087	2 832	3 460	697	1 729	5 100	1 725	4 670	1 562	2 017	20	275
75-79	23 237	2 603	3 441	655	1 797	4 338	1 572	4 453	1 593	2 461	16	308
80+	38 161	4 714	5 145	1 027	3 120	6 306	2 977	7 625	2 499	4 153	28	567

1. RECORDED DEATHS

1.2 PROVINCE BY AGE AT DEATH, 1998

1.2.2 MALE

AGE GROUP	TOTAL	PROVINCE OF DEATH										
		WC	EC	NC	FS	KZN	NW	GP	MP	NP	FOREIGN	UNSPEC.
TOTAL	166 388	18 351	19 960	4 714	14 289	37 553	11 814	34 802	11 374	11 766	233	1 532
<15	3 936	571	333	200	420	739	258	844	306	244	4	17
15-19	1 954	412	233	93	109	380	110	384	107	115	2	9
20-24	7 207	996	741	189	473	1 905	414	1 618	476	352	12	31
25-29	11 913	1 151	1 117	261	962	3 457	726	2 793	802	548	22	74
30-34	13 247	1 128	1 250	307	1 264	3 678	898	2 938	965	695	29	95
35-39	13 488	1 185	1 399	307	1 318	3 511	985	2 964	909	775	29	106
40-44	12 969	1 167	1 445	344	1 223	3 137	933	2 835	950	792	16	127
45-49	13 250	1 247	1 509	357	1 289	3 179	945	2 797	911	887	15	114
50-54	12 301	1 288	1 435	371	1 091	2 851	870	2 629	812	823	15	116
55-59	13 364	1 408	1 779	399	1 188	3 027	920	2 706	858	937	22	120
60-64	12 016	1 478	1 545	357	1 023	2 479	903	2 387	810	916	18	100
65-69	13 006	1 719	1 859	395	1 050	2 602	918	2 525	796	971	14	157
70-74	12 496	1 579	1 755	402	921	2 449	961	2 382	830	1 070	11	136
75-79	11 124	1 281	1 590	339	874	1 950	839	2 175	790	1 127	8	151
80+	14 117	1 741	1 970	393	1 084	2 209	1 134	2 825	1 052	1 514	16	179

1. RECORDED DEATHS

1.2 PROVINCE BY AGE AT DEATH, 1998

1.2.3 FEMALE

AGE GROUP	TOTAL	PROVINCE OF DEATH										
		WC	EC	NC	FS	KZN	NW	GP	MP	NP	FOREIGN	UNSPEC.
TOTAL	132 689	13 234	16 987	3 650	12 204	29 760	9 516	26 238	8 970	10 649	99	1 382
<15	3 214	469	232	189	373	603	209	696	233	191	2	17
15-19	1 065	145	107	37	78	254	64	211	87	79	1	2
20-24	4 878	292	535	94	472	1 495	396	841	432	295	5	21
25-29	8 338	430	813	188	956	2 538	690	1 552	609	484	13	65
30-34	8 532	500	827	221	1 039	2 438	701	1 596	625	497	11	77
35-39	7 816	588	858	214	954	1 863	654	1 580	552	485	4	64
40-44	7 189	643	839	228	769	1 535	563	1 535	544	460	7	66
45-49	7 025	680	839	195	684	1 539	509	1 521	555	441	8	54
50-54	6 695	756	792	212	595	1 362	519	1 458	476	469	2	54
55-59	8 331	860	1 217	254	710	1 826	562	1 734	548	551	2	67
60-64	9 733	1 110	1 391	261	820	2 185	657	1 901	588	737	3	80
65-69	12 125	1 213	1 806	312	987	2 986	652	2 247	739	1 040	12	131
70-74	11 591	1 253	1 705	295	808	2 651	764	2 288	732	947	9	139
75-79	12 113	1 322	1 851	316	923	2 388	733	2 278	803	1 334	8	157
80+	24 044	2 973	3 175	634	2 036	4 097	1 843	4 800	1 447	2 639	12	388

1. RECORDED DEATHS

1.3 PROVINCE OF DEATH BY AGE AT DEATH, 1999

1.3.1 TOTAL

AGE GROUP	TOTAL	PROVINCE OF DEATH										
		WC	EC	NC	FS	KZN	NW	GP	MP	NP	FOREIGN	UNSPEC.
TOTAL	326 618	32 787	43 615	8 749	28 842	75 206	25 036	62 506	22 577	22 192	385	2 255
<15	9 058	1 089	719	442	974	2 015	713	1 893	637	520	3	29
15-19	3 832	596	514	152	234	883	261	659	247	241	3	22
20-24	13 413	1 233	1 490	291	1 065	3 665	1 042	2 667	1 035	812	13	50
25-29	24 023	1 719	2 438	509	2 381	7 097	1 903	4 702	1 783	1 212	28	110
30-34	26 689	1 779	2 760	598	2 868	7 397	2 158	5 255	2 034	1 492	44	128
35-39	25 447	1 884	2 811	615	2 739	6 542	2 132	5 026	1 867	1 472	43	118
40-44	22 875	1 820	2 670	589	2 424	5 415	1 880	4 634	1 682	1 410	21	129
45-49	22 544	2 054	2 726	642	2 210	5 132	1 756	4 543	1 693	1 460	34	96
50-54	20 902	2 104	2 736	590	1 927	4 833	1 623	4 233	1 339	1 224	31	101
55-59	22 397	2 444	3 398	667	1 815	4 878	1 706	4 166	1 536	1 458	29	100
60-64	22 734	2 670	3 243	623	1 701	4 964	1 658	4 317	1 516	1 671	30	145
65-69	25 277	2 983	4 230	727	1 981	5 580	1 693	4 421	1 574	1 710	20	177
70-74	25 443	2 971	4 111	665	1 812	5 572	1 883	4 405	1 566	1 997	21	215
75-79	22 455	2 700	3 686	565	1 618	4 488	1 503	4 163	1 474	1 832	29	233
80+	39 529	4 741	6 083	1 074	3 093	6 745	3 125	7 422	2 594	3 681	36	602

1. RECORDED DEATHS

1.3 PROVINCE OF DEATH BY AGE AT DEATH, 1999

1.3.2 MALE

AGE GROUP	TOTAL	PROVINCE OF DEATH										
		WC	EC	NC	FS	KZN	NW	GP	MP	NP	FOREIGN	UNSPEC.
TOTAL	178 689	18 991	23 245	4 869	15 428	40 546	13 617	35 187	12 436	11 645	257	2 468
<15	4 779	628	422	228	504	1 027	353	1 026	303	261	3	24
15-19	2 386	438	329	97	121	515	138	447	127	153	1	20
20-24	7 351	909	811	163	460	1 907	497	1 589	525	432	8	50
25-29	13 004	1 207	1 221	289	1 107	3 687	906	2 896	937	599	14	141
30-34	15 458	1 188	1 525	340	1 543	4 217	1 161	3 274	1 185	817	32	176
35-39	15 565	1 273	1 694	365	1 582	4 008	1 233	3 166	1 152	858	36	198
40-44	14 522	1 232	1 695	350	1 505	3 553	1 139	2 946	1 013	871	17	201
45-49	14 448	1 300	1 716	398	1 430	3 407	1 079	2 865	1 080	945	30	198
50-54	13 437	1 323	1 763	351	1 211	3 175	1 030	2 727	867	810	19	161
55-59	13 906	1 534	2 062	407	1 118	3 024	1 057	2 572	977	933	22	200
60-64	12 680	1 561	1 771	363	959	2 622	993	2 444	823	928	20	196
65-69	12 847	1 696	2 120	415	1 023	2 554	947	2 319	786	793	13	181
70-74	13 013	1 615	2 131	400	970	2 532	1 041	2 232	859	996	12	225
75-79	10 788	1 387	1 765	277	803	1 982	785	2 011	735	863	16	164
80+	14 505	1 700	2 220	426	1 092	2 336	1 258	2 673	1 067	1 386	14	333

1. RECORDED DEATHS

1.3 PROVINCE BY AGE AT DEATH, 1999

1.3.3 FEMALE

AGE GROUP	TOTAL	PROVINCE OF DEATH										
		WC	EC	NC	FS	KZN	NW	GP	MP	NP	FOREIGN	UNSPEC.
TOTAL	147 929	13 796	20 370	3 880	13 414	34 660	11 419	27 319	10 141	10 547	128	2 255
<15	4 279	461	297	214	470	988	360	867	334	259	0	29
15-19	1 446	158	185	55	113	368	123	212	120	88	2	22
20-24	6 062	324	679	128	605	1 758	545	1 078	510	380	5	50
25-29	11 019	512	1 217	220	1 274	3 410	997	1 806	846	613	14	110
30-34	11 231	591	1 235	258	1 325	3 180	997	1 981	849	675	12	128
35-39	9 882	611	1 117	250	1 157	2 534	899	1 860	715	614	7	118
40-44	8 353	588	975	239	919	1 862	741	1 688	669	539	4	129
45-49	8 096	754	1 010	244	780	1 725	677	1 678	613	515	4	96
50-54	7 465	781	973	239	716	1 658	593	1 506	472	414	12	101
55-59	8 491	910	1 336	260	697	1 854	649	1 594	559	525	7	100
60-64	10 054	1 109	1 472	260	742	2 342	665	1 873	693	743	10	145
65-69	12 430	1 287	2 110	312	958	3 026	746	2 102	788	917	7	177
70-74	12 430	1 356	1 980	265	842	3 040	842	2 173	707	1 001	9	215
75-79	11 667	1 313	1 921	288	815	2 506	718	2 152	739	969	13	233
80+	25 024	3 041	3 863	648	2 001	4 409	1 867	4 749	1 527	2 295	22	602

1. RECORDED DEATHS

1.4 PROVINCE BY AGE AT DEATH, 2000

1.4.1 TOTAL

AGE GROUP	TOTAL	PROVINCE OF DEATH										
		WC	EC	NC	FS	KZN	NW	GP	MP	NP	FOREIGN	UNSPEC.
TOTAL	362 450	34 390	49 832	9 414	31 423	84 851	28 940	67 587	25 002	24 775	387	5 849
<15	11 809	1 113	867	517	1 285	2 618	1 115	2 434	856	875	11	118
15-19	4 107	656	576	124	237	921	278	722	289	270	2	32
20-24	14 183	1 353	1 701	331	1 007	3 890	1 090	2 676	1 164	830	20	121
25-29	27 707	1 751	2 945	566	2 669	8 321	2 324	5 211	2 132	1 476	31	281
30-34	31 832	1 921	3 340	658	3 454	9 002	2 801	5 979	2 428	1 782	30	437
35-39	30 128	2 022	3 319	687	3 261	7 911	2 663	5 692	2 279	1 783	35	476
40-44	26 586	2 063	3 299	669	2 648	6 309	2 444	5 194	1 901	1 626	49	384
45-49	24 680	2 195	3 038	707	2 310	5 677	2 036	4 911	1 812	1 584	23	387
50-54	23 677	2 287	3 035	662	2 205	5 517	1 847	4 488	1 663	1 574	27	372
55-59	22 512	2 481	3 275	675	1 825	4 828	1 775	4 407	1 472	1 443	21	310
60-64	25 593	2 956	4 051	736	1 919	5 480	1 939	4 571	1 673	1 824	31	413
65-69	25 001	2 955	4 315	716	1 869	5 473	1 793	4 409	1 380	1 631	26	434
70-74	27 981	2 988	4 827	710	1 949	6 239	1 924	4 791	1 790	2 175	21	567
75-79	22 384	2 648	3 880	543	1 463	4 618	1 618	4 138	1 291	1 746	20	419
80+	44 270	5 001	7 364	1 113	3 322	8 047	3 293	7 964	2 872	4 156	40	1 098

1. RECORDED DEATHS

1.4 PROVINCE OF DEATH BY AGE AT DEATH, 2000

1.4.2 MALE

AGE GROUP	TOTAL	PROVINCE OF DEATH										
		WC	EC	NC	FS	KZN	NW	GP	MP	NP	FOREIGN	UNSPEC.
TOTAL	192 492	19 599	25 542	5 102	16 310	44 080	15 358	36 937	13 388	12 931	252	2 993
<15	6 252	628	460	280	686	1 359	564	1 294	431	481	4	65
15-19	2 450	476	352	70	123	520	139	428	159	164	2	17
20-24	7 180	990	833	170	399	1 879	436	1 486	540	371	14	62
25-29	13 850	1 165	1 385	306	1 166	4 088	1 014	2 953	976	655	16	126
30-34	17 414	1 251	1 716	356	1 825	4 798	1 388	3 573	1 315	926	17	249
35-39	17 624	1 286	1 858	384	1 758	4 660	1 505	3 502	1 327	1 021	27	296
40-44	16 311	1 352	2 013	405	1 563	3 941	1 457	3 172	1 168	974	35	231
45-49	15 531	1 367	1 892	420	1 392	3 675	1 284	3 103	1 116	999	19	264
50-54	14 940	1 427	1 889	392	1 339	3 511	1 150	2 824	1 084	1 052	24	248
55-59	13 805	1 518	1 965	406	1 132	2 938	1 109	2 590	924	1 005	16	202
60-64	14 232	1 733	2 142	418	1 134	2 902	1 110	2 573	934	1 048	19	219
65-69	12 674	1 646	2 141	426	963	2 438	1 014	2 325	719	778	14	210
70-74	13 510	1 548	2 420	368	995	2 676	1 025	2 301	881	1 043	9	244
75-79	10 625	1 355	1 804	266	701	1 987	844	1 903	686	881	16	182
80+	16 094	1 857	2 672	435	1 134	2 708	1 319	2 910	1 128	1 533	20	378

1. RECORDED DEATHS

1.4 PROVINCE OF DEATH BY AGE AT DEATH, 2000

1.4.3 FEMALE

AGE GROUP	TOTAL	PROVINCE OF DEATH										
		WC	EC	NC	FS	KZN	NW	GP	MP	NP	FOREIGN	UNSPEC.
TOTAL	169 958	14 791	24 290	4 312	15 113	40 771	13 582	30 650	11 614	11 844	135	2 856
<15	5 557	485	407	237	599	1 259	551	1 140	425	394	7	53
15-19	1 657	180	224	54	114	401	139	294	130	106	0	15
20-24	7 003	363	868	161	608	2 011	654	1 190	624	459	6	59
25-29	13 857	586	1 560	260	1 503	4 233	1 310	2 258	1 156	821	15	155
30-34	14 418	670	1 624	302	1 629	4 204	1 413	2 406	1 113	856	13	188
35-39	12 504	736	1 461	303	1 503	3 251	1 158	2 190	952	762	8	180
40-44	10 275	711	1 286	264	1 085	2 368	987	2 022	733	652	14	153
45-49	9 149	828	1 146	287	918	2 002	752	1 808	696	585	4	123
50-54	8 737	860	1 146	270	866	2 006	697	1 664	579	522	3	124
55-59	8 707	963	1 310	269	693	1 890	666	1 817	548	438	5	108
60-64	11 361	1 223	1 909	318	785	2 578	829	1 998	739	776	12	194
65-69	12 327	1 309	2 174	290	906	3 035	779	2 084	661	853	12	224
70-74	14 471	1 440	2 407	342	954	3 563	899	2 490	909	1 132	12	323
75-79	11 759	1 293	2 076	277	762	2 631	774	2 235	605	865	4	237
80+	28 176	3 144	4 692	678	2 188	5 339	1 974	5 054	1 744	2 623	20	720

2. RECORDED DEATHS

2.1 MONTH OF DEATH BY PROVINCE AND YEAR

2.1.1 MALE

PROVINCE	TOTAL	MONTH OF DEATH											
		JAN	FEB	MAR	APR	MAY	JUN	JUL	AUG	SEP	OCT	NOV	DEC
South Africa	684 900	73 509	47 071	52 503	54 880	62 593	62 369	62 796	61 326	57 971	58 490	56 593	34 799
1997	147 331	15 620	9 987	11 299	11 608	13 255	13 593	13 689	13 405	12 420	12 626	12 200	7 629
1998	166 388	17 283	10 988	12 734	13 509	17 260	15 484	14 873	14 435	13 655	14 068	13 688	8 411
1999	178 689	19 481	12 453	13 540	13 930	15 371	16 210	16 604	16 460	15 317	15 374	14 867	9 082
2000	192 492	21 125	13 643	14 930	15 833	16 707	17 082	17 630	17 026	16 579	16 422	15 838	9 677
Western Cape	74 107	8 260	5 136	5 687	6 007	6 596	6 970	7 006	6 738	6 252	6 067	5 857	3 531
1997	17 166	1 929	1 236	1 312	1 347	1 499	1 638	1 634	1 594	1 476	1 372	1 323	806
1998	18 351	2 007	1 268	1 466	1 588	1 850	1 702	1 733	1 580	1 447	1 431	1 431	848
1999	18 991	2 196	1 320	1 411	1 494	1 570	1 775	1 792	1 759	1 601	1 613	1 552	908
2000	19 599	2 128	1 312	1 498	1 578	1 677	1 855	1 847	1 805	1 728	1 651	1 551	969
Eastern Cape	85 544	9 293	5 735	6 396	6 658	7 272	7 693	7 724	7 606	7 486	7 376	7 375	4 930
1997	16 797	1 780	1 098	1 270	1 257	1 446	1 474	1 482	1 544	1 508	1 444	1 488	1 006
1998	19 960	2 060	1 259	1 508	1 530	1 888	1 890	1 782	1 786	1 709	1 638	1 732	1 178
1999	23 245	2 492	1 573	1 645	1 744	1 848	2 063	2 200	2 113	1 936	2 108	2 118	1 405
2000	25 542	2 961	1 805	1 973	2 127	2 090	2 266	2 260	2 163	2 333	2 186	2 037	1 341
Northern Cape	19 037	2 096	1 316	1 401	1 569	1 780	1 819	1 749	1 666	1 649	1 498	1 517	977
1997	4 352	468	290	315	368	383	442	398	372	372	349	362	233
1998	4 714	493	310	342	369	524	460	447	422	378	345	376	248
1999	4 869	545	333	349	381	437	443	462	452	423	415	383	246
2000	5 102	590	383	395	451	436	474	442	420	476	389	396	250
Free State	58 492	6 314	3 912	4 397	4 686	5 560	5 315	5 412	5 316	4 958	4 966	4 774	2 882
1997	12 465	1 302	821	925	972	1 126	1 198	1 157	1 181	1 052	1 026	1 027	678
1998	14 289	1 506	950	1 066	1 155	1 613	1 302	1 268	1 219	1 150	1 202	1 173	685
1999	15 428	1 713	1 025	1 155	1 210	1 355	1 315	1 438	1 436	1 389	1 352	1 268	772
2000	16 310	1 793	1 116	1 251	1 349	1 466	1 500	1 549	1 480	1 367	1 386	1 306	747

2. RECORDED DEATHS

2.1 MONTH OF DEATH BY PROVINCE AND YEAR

2.1.1 MALE (continued)

PROVINCE	TOTAL	MONTH OF DEATH											
		JAN	FEB	MAR	APR	MAY	JUN	JUL	AUG	SEP	OCT	NOV	DEC
KwaZulu-Natal	154 827	16 812	10 718	11 898	12 294	13 953	13 710	13 875	13 644	13 074	13 772	13 047	8 030
1997	32 648	3 414	2 257	2 466	2 610	2 965	2 957	2 957	2 881	2 721	2 947	2 726	1 747
1998	37 553	3 953	2 454	2 936	3 025	3 653	3 473	3 284	3 238	3 091	3 358	3 139	1 949
1999	40 546	4 493	2 836	3 112	3 132	3 565	3 556	3 712	3 627	3 492	3 512	3 402	2 107
2000	44 080	4 952	3 171	3 384	3 527	3 770	3 724	3 922	3 898	3 770	3 955	3 780	2 227
North West	51 017	5 250	3 417	3 867	4 050	4 791	4 721	4 696	4 750	4 325	4 252	4 292	2 606
1997	10 228	1 019	672	791	796	878	919	963	1 019	876	903	863	529
1998	11 814	1 166	748	853	919	1 316	1 169	1 067	1 014	993	956	1 005	608
1999	13 617	1 409	962	1 044	1 049	1 162	1 241	1 223	1 321	1 202	1 185	1 125	694
2000	15 358	1 656	1 035	1 179	1 286	1 435	1 392	1 443	1 396	1 254	1 208	1 299	775
Gauteng	139 137	14 643	9 673	10 998	11 534	13 228	12 882	13 067	12 506	11 469	11 554	11 245	6 338
1997	32 211	3 449	2 160	2 601	2 676	3 000	2 961	3 123	2 813	2 611	2 717	2 651	1 449
1998	34 802	3 563	2 371	2 750	2 930	3 726	3 218	3 124	3 134	2 786	2 875	2 748	1 577
1999	35 187	3 775	2 535	2 721	2 830	3 194	3 453	3 309	3 254	2 928	2 854	2 821	1 513
2000	36 937	3 856	2 607	2 926	3 098	3 308	3 250	3 511	3 305	3 144	3 108	3 025	1 799
Mpumalanga	47 318	4 872	3 308	3 556	3 741	4 391	4 355	4 359	4 260	3 972	4 107	3 970	2 427
1997	10 120	1 031	693	755	778	956	967	942	920	824	842	866	546
1998	11 374	1 141	764	813	911	1 232	1 034	980	971	946	1 002	998	582
1999	12 436	1 323	874	925	984	1 065	1 149	1 181	1 180	1 077	1 079	1 001	598
2000	13 388	1 377	977	1 063	1 068	1 138	1 205	1 256	1 189	1 125	1 184	1 105	701
Northern Province	46 259	4 999	3 236	3 631	3 658	4 295	4 070	4 129	4 050	3 923	4 024	3 747	2 497
1997	9 917	1 056	653	781	701	890	896	908	951	850	867	794	570
1998	11 766	1 229	765	902	963	1 312	1 083	1 064	942	964	1 037	913	592
1999	11 645	1 258	827	953	921	957	981	1 020	1 067	1 019	998	972	672
2000	12 931	1 456	991	995	1 073	1 136	1 110	1 137	1 090	1 090	1 122	1 068	663

2. RECORDED DEATHS

2.1 MONTH OF DEATH BY PROVINCE AND YEAR

2.1.1 MALE (concluded)

PROVINCE	TOTAL	MONTH OF DEATH											
		JAN	FEB	MAR	APR	MAY	JUN	JUL	AUG	SEP	OCT	NOV	DEC
Foreign	939	110	75	69	74	96	81	78	71	88	79	67	51
1997	197	26	18	6	10	18	21	15	14	19	22	22	6
1998	233	35	19	14	16	21	15	17	15	26	26	14	15
1999	257	26	19	26	22	27	21	22	21	27	14	15	17
2000	252	23	19	23	26	30	24	24	21	16	17	16	13
Unspecified	8 223	860	545	603	609	631	753	701	719	775	795	702	530
1997	1 230	146	89	77	93	94	120	110	116	111	137	78	59
1998	1 532	130	80	84	103	125	138	107	114	165	198	159	129
1999	2 468	251	149	199	163	191	213	245	230	223	244	210	150
2000	2 993	333	227	243	250	221	282	239	259	276	216	255	192

2. RECORDED DEATHS

2.1 MONTH OF DEATH BY PROVINCE AND YEAR

2.1.2 FEMALE

PROVINCE	TOTAL	MONTH OF DEATH											
		JAN	FEB	MAR	APR	MAY	JUN	JUL	AUG	SEP	OCT	NOV	DEC
South Africa	563 618	59 852	38 567	43 283	44 983	52 892	52 025	51 848	50 538	47 417	47 978	46 468	27 767
1997	113 042	11 768	7 383	8 770	8 808	10 279	10 689	10 649	10 412	9 648	9 711	9 315	5 610
1998	132 689	13 609	8 861	9 856	11 020	14 611	12 485	11 704	11 523	10 685	11 105	10 779	6 451
1999	147 929	16 024	10 112	11 371	11 259	12 758	13 737	13 915	13 511	12 676	12 760	12 299	7 507
2000	169 958	18 451	12 211	13 286	13 896	15 244	15 114	15 580	15 092	14 408	14 402	14 075	8 199
Western Cape	54 039	5 835	3 616	4 158	4 316	5 129	5 088	5 187	5 157	4 543	4 382	4 161	2 467
1997	12 218	1 242	831	945	954	1 104	1 159	1 161	1 235	1 037	1 032	968	550
1998	13 234	1 428	878	996	1 151	1 479	1 168	1 246	1 207	1 075	1 047	956	603
1999	13 796	1 521	868	1 128	1 060	1 193	1 269	1 328	1 339	1 190	1 134	1 095	671
2000	14 791	1 644	1 039	1 089	1 151	1 353	1 492	1 452	1 376	1 241	1 169	1 142	643
Eastern Cape	75 098	8 122	5 042	5 722	5 818	6 647	6 624	6 719	6 928	6 581	6 424	6 407	4 064
1997	13 451	1 497	891	1 026	990	1 128	1 135	1 190	1 287	1 204	1 182	1 176	745
1998	16 987	1 695	1 060	1 232	1 348	1 720	1 519	1 457	1 578	1 440	1 491	1 504	943
1999	20 370	2 182	1 363	1 548	1 525	1 659	1 827	1 884	1 921	1 794	1 742	1 776	1 149
2000	24 290	2 748	1 728	1 916	1 955	2 140	2 143	2 188	2 142	2 143	2 009	1 951	1 227
Northern Cape	15 282	1 642	1 035	1 190	1 147	1 458	1 535	1 442	1 400	1 258	1 209	1 235	731
1997	3 440	358	232	268	276	304	343	345	297	288	274	304	151
1998	3 650	383	248	267	283	400	427	328	302	267	269	295	181
1999	3 880	441	243	306	274	333	354	352	415	342	340	298	182
2000	4 312	460	312	349	314	421	411	417	386	361	326	338	217
Free State	51 321	5 384	3 467	3 902	4 114	4 930	4 705	4 897	4 536	4 317	4 301	4 224	2 544
1997	10 590	1 026	696	799	811	1 017	991	1 045	1 005	883	879	905	533
1998	12 204	1 278	820	911	1 062	1 393	1 174	1 122	973	979	956	947	589
1999	13 414	1 485	886	984	995	1 124	1 178	1 297	1 239	1 171	1 217	1 122	716
2000	15 113	1 595	1 065	1 208	1 246	1 396	1 362	1 433	1 319	1 284	1 249	1 250	706

2. RECORDED DEATHS

2.1 MONTH OF DEATH BY PROVINCE AND YEAR

2.1.3 FEMALE (continued)

PROVINCE	TOTAL	MONTH OF DEATH											
		JAN	FEB	MAR	APR	MAY	JUN	JUL	AUG	SEP	OCT	NOV	DEC
KwaZulu-Natal	130 076	14 092	9 110	10 107	10 426	11 624	11 497	11 621	11 401	11 082	11 406	11 150	6 560
1997	24 885	2 696	1 602	1 903	1 900	2 317	2 345	2 302	2 140	2 166	2 155	2 070	1 289
1998	29 760	3 029	2 122	2 277	2 441	2 968	2 614	2 570	2 619	2 461	2 619	2 529	1 511
1999	34 660	3 809	2 392	2 750	2 688	2 912	3 147	3 210	3 077	2 955	3 006	2 943	1 771
2000	40 771	4 558	2 994	3 177	3 397	3 427	3 391	3 539	3 565	3 500	3 626	3 608	1 989
North West	42 575	4 333	2 910	3 096	3 332	4 110	4 054	3 912	3 813	3 606	3 690	3 547	2 172
1997	8 058	759	474	592	623	751	790	799	784	684	728	669	405
1998	9 516	962	622	662	736	1 091	930	789	834	787	834	801	468
1999	11 419	1 144	807	816	879	1 018	1 069	1 094	992	1 009	995	986	610
2000	13 582	1 468	1 007	1 026	1 094	1 250	1 265	1 230	1 203	1 126	1 133	1 091	689
Gauteng	107 560	11 215	7 392	8 394	8 766	10 641	10 597	10 238	9 618	8 715	8 943	8 444	4 597
1997	23 353	2 457	1 544	1 911	1 934	2 142	2 328	2 238	2 114	1 914	1 936	1 826	1 009
1998	26 238	2 727	1 778	2 017	2 252	3 060	2 660	2 340	2 255	1 976	2 108	1 968	1 097
1999	27 319	2 850	1 955	2 080	2 061	2 540	2 863	2 650	2 471	2 232	2 290	2 178	1 149
2000	30 650	3 181	2 115	2 386	2 519	2 899	2 746	3 010	2 778	2 593	2 609	2 472	1 342
Mpumalanga	38 343	4 079	2 615	2 933	3 061	3 674	3 580	3 517	3 321	3 215	3 197	3 170	1 981
1997	7 618	779	510	614	620	696	733	732	662	641	609	604	418
1998	8 970	934	558	656	718	1 039	881	805	746	727	732	733	441
1999	10 141	1 148	712	767	770	897	931	970	893	873	856	803	521
2000	11 614	1 218	835	896	953	1 042	1 035	1 010	1 020	974	1 000	1 030	601
Northern Province	41 350	4 393	2 858	3 187	3 385	4 017	3 661	3 583	3 629	3 375	3 626	3 434	2 202
1997	8 310	830	538	636	607	735	761	727	777	734	801	708	456
1998	10 649	1 060	701	751	930	1 312	997	929	887	806	870	886	520
1999	10 547	1 225	743	815	834	914	908	898	931	876	922	896	585
2000	11 844	1 278	876	985	1 014	1 056	995	1 029	1 034	959	1 033	944	641

2. RECORDED DEATHS

2.1 MONTH OF DEATH BY PROVINCE AND YEAR

2.1.2 FEMALE (concluded)

PROVINCE	TOTAL	MONTH OF DEATH											
		JAN	FEB	MAR	APR	MAY	JUN	JUL	AUG	SEP	OCT	NOV	DEC
Foreign	470	56	27	41	44	33	44	57	28	37	28	37	38
1997	108	14	4	8	14	9	10	10	10	8	8	6	7
1998	99	10	7	8	7	5	8	12	3	11	9	9	10
1999	128	16	5	9	9	6	14	19	9	10	8	11	12
2000	135	16	11	16	14	13	12	16	6	8	3	11	9
Unspecified	7 504	701	495	553	574	629	640	675	707	688	772	659	411
1997	1 011	110	61	68	79	76	94	100	101	89	107	79	47
1998	1 382	103	67	79	92	144	107	106	119	156	170	151	88
1999	2 255	203	138	168	164	162	177	213	224	224	250	191	141
2000	2 856	285	229	238	239	247	262	256	263	219	245	238	135

3. RECORDED DEATHS
3.1 PROVINCIAL DEATHS

3.1.1 MAGISTERIAL DISTRICT, SEX AND YEAR OF DEATH

Province and magisterial district	Total					Male					Female					Unspecified				
	Total	1997	1998	1999	2000	Total	1997	1998	1999	2000	Total	1997	1998	1999	2000	Total	1997	1998	1999	2000
Western Cape	128 197	29 405	31 598	32 799	34 395	74 107	17 166	18 351	18 991	19 599	54 039	12 218	13 234	13 796	14 791	51	21	13	12	5
Beaufort West	1 683	381	390	440	472	947	226	219	254	248	736	155	171	186	224	0	0	0	0	0
Bellville	16 991	4 095	4 302	4 102	4 492	9 826	2 439	2 508	2 353	2 526	7 161	1 654	1 794	1 747	1 966	4	2	0	2	0
Bredasdorp	1 126	251	312	295	268	659	144	171	193	151	465	105	141	102	117	2	2	0	0	0
Caledon	2 055	459	513	514	569	1 213	269	307	310	327	842	190	206	204	242	0	0	0	0	0
Calitzdorp	194	60	43	40	51	111	36	27	21	27	83	24	16	19	24	0	0	0	0	0
Cape	19 188	3 299	4 221	6 032	5 636	10 604	1 872	2 362	3 281	3 089	8 574	1 421	1 858	2 748	2 547	10	6	1	3	0
Ceres	1 528	347	370	369	442	917	215	216	218	268	611	132	154	151	174	0	0	0	0	0
Clanwilliam	1 012	249	238	269	256	580	140	133	163	144	431	109	105	106	111	1	0	0	0	1
George	5 177	1 149	1 251	1 381	1 396	3 071	682	754	844	791	2 104	467	496	536	605	2	0	1	1	0
Goodwood	8 170	2 182	2 108	1 857	2 023	4 674	1 236	1 223	1 079	1 136	3 490	943	882	778	887	6	3	3	0	0
Heidelberg	166	52	48	47	19	89	24	30	29	6	77	28	18	18	13	0	0	0	0	0
Hermanus	1 170	253	286	325	306	684	138	182	181	183	486	115	104	144	123	0	0	0	0	0
Hopefield	192	36	57	34	65	124	28	38	18	40	68	8	19	16	25	0	0	0	0	0
Knysna	2 440	569	620	643	608	1 426	321	345	384	376	1 013	248	275	259	231	1	0	0	0	1
Kuils River	3 093	638	708	812	935	1 837	376	436	473	552	1 256	262	272	339	383	0	0	0	0	0
Ladismith	482	136	123	107	116	272	73	66	69	64	210	63	57	38	52	0	0	0	0	0
Laingsburg	375	87	88	81	119	205	43	46	42	74	170	44	42	39	45	0	0	0	0	0
Malmesbury	2 854	640	699	763	752	1 750	381	426	470	473	1 103	259	273	292	279	1	0	0	1	0
Mitchells Plain	9 559	2 291	2 459	2 301	2 508	6 321	1 534	1 639	1 515	1 633	3 227	754	815	783	875	11	3	5	3	0
Montagu	875	182	243	232	218	514	108	142	138	126	361	74	101	94	92	0	0	0	0	0
Moorreesburg	370	67	93	105	105	212	37	52	70	53	158	30	41	35	52	0	0	0	0	0
Mossel Bay	2 070	466	523	555	526	1 171	269	279	321	302	899	197	244	234	224	0	0	0	0	0
Murraysburg	241	63	62	54	62	131	39	32	28	32	110	24	30	26	30	0	0	0	0	0
Oudtshoorn	2 860	697	732	713	718	1 571	380	391	406	394	1 288	317	340	307	324	1	0	1	0	0
Paarl	5 415	1 267	1 268	1 440	1 440	3 164	761	757	807	839	2 251	506	511	633	601	0	0	0	0	0
Piketberg	1 162	266	293	311	292	702	142	179	205	176	460	124	114	106	116	0	0	0	0	0
Prince Albert	448	99	107	128	114	258	63	58	85	52	190	36	49	43	62	0	0	0	0	0
Riversdale	1 021	266	246	225	284	571	149	138	126	158	450	117	108	99	126	0	0	0	0	0
Robertson	1 009	231	242	268	268	558	131	140	148	139	451	100	102	120	129	0	0	0	0	0
Simon's Town	1 557	360	398	387	412	848	204	210	205	229	709	156	188	182	183	0	0	0	0	0
Somerset West	3 621	801	892	967	961	1 996	427	512	523	534	1 623	373	380	444	426	2	1	0	0	1

3. RECORDED DEATHS
3.1 PROVINCIAL DEATHS

3.1.1 MAGISTERIAL DISTRICT, SEX AND YEAR OF DEATH (continued)

Province and magisterial district	Total					Male					Female					Unspecified				
	Total	1997	1998	1999	2000	Total	1997	1998	1999	2000	Total	1997	1998	1999	2000	Total	1997	1998	1999	2000
Stellenbosch	2 095	485	531	518	561	1 167	264	293	295	315	927	220	238	223	246	1	1	0	0	0
Strand	1 406	306	355	351	394	742	171	191	187	193	664	135	164	164	201	0	0	0	0	0
Swellendam	1 015	239	229	256	291	634	160	139	159	176	381	79	90	97	115	0	0	0	0	0
Tulbagh	777	189	157	210	221	499	120	96	153	130	278	69	61	57	91	0	0	0	0	0
Uniondale	386	83	101	90	112	232	50	56	52	74	154	33	45	38	38	0	0	0	0	0
Vanrhynsdorp	437	102	106	111	118	250	54	61	60	75	187	48	45	51	43	0	0	0	0	0
Vredenburg	1 407	324	351	357	375	886	203	233	224	226	521	121	118	133	149	0	0	0	0	0
Vredendal	1 314	277	324	336	377	789	170	197	198	224	525	107	127	138	153	0	0	0	0	0
Wellington	731	181	154	190	206	435	117	84	103	131	296	64	70	87	75	0	0	0	0	0
Worcester	5 509	1 274	1 400	1 409	1 426	3 232	754	841	819	818	2 275	520	559	589	607	2	0	0	1	1
Wynberg	15 016	4 006	3 955	3 174	3 881	8 235	2 216	2 142	1 782	2 095	6 774	1 787	1 811	1 391	1 785	7	3	2	1	1
Eastern Cape	161 490	30 753	37 103	43 724	49 910	85 544	16 797	19 960	23 245	25 542	75 098	13 451	16 987	20 370	24 290	848	505	156	109	78
Aberdeen	486	106	131	99	150	270	61	78	55	76	215	45	53	43	74	1	0	0	1	0
Adelaide	657	139	159	176	183	324	77	77	94	76	332	62	81	82	107	1	0	1	0	0
Albany	3 037	653	768	807	809	1 600	341	414	417	428	1 429	311	352	388	378	8	1	2	2	3
Albert	609	159	137	140	173	283	78	67	57	81	326	81	70	83	92	0	0	0	0	0
Alexandria	478	110	110	124	134	264	60	56	72	76	212	49	53	52	58	2	1	1	0	0
Aliwal North	1 677	373	421	381	502	799	184	189	166	260	876	188	232	214	242	2	1	0	1	0
Barkly-East	331	75	93	93	70	174	40	59	40	35	157	35	34	53	35	0	0	0	0	0
Bathurst	1 615	300	393	430	492	873	175	222	234	242	737	123	171	193	250	5	2	0	3	0
Bedford	410	87	112	93	118	205	46	60	42	57	204	41	51	51	61	1	0	1	0	0
Bizana	2 829	354	691	923	861	1 531	213	364	494	460	1 287	137	325	426	399	11	4	2	3	2
Butterworth	2 513	499	637	629	748	1 467	321	359	357	430	1 021	158	276	272	315	25	20	2	0	3
Cala	997	134	183	313	367	544	74	105	169	196	447	57	77	143	170	6	3	1	1	1
Cathcart	603	124	153	152	174	290	61	68	77	84	310	62	84	74	90	3	1	1	1	0
Cofimvaba	1 784	226	380	540	638	924	126	213	267	318	848	90	165	273	320	12	10	2	0	0
Cradock	1 585	350	368	377	490	821	192	184	210	235	763	158	184	166	255	1	0	0	1	0
East London	13 734	2 837	3 186	3 759	3 952	7 356	1 578	1 722	1 998	2 058	6 305	1 223	1 442	1 750	1 890	73	36	22	11	4
Elliot	647	167	173	138	169	330	80	92	71	87	314	85	80	67	82	3	2	1	0	0
Elliotdale	897	90	201	290	316	479	50	105	159	165	411	36	96	129	150	7	4	0	2	1
Engcobo	2 911	387	577	830	1 117	1 574	220	327	456	571	1 305	144	250	368	543	32	23	0	6	3

3. RECORDED DEATHS
3.1 PROVINCIAL DEATHS

3.1.1 MAGISTERIAL DISTRICT, SEX AND YEAR OF DEATH (continued)

Province and magisterial district	Total					Male					Female					Unspecified				
	Total	1997	1998	1999	2000	Total	1997	1998	1999	2000	Total	1997	1998	1999	2000	Total	1997	1998	1999	2000
Flagstaff	1 636	229	337	523	547	920	145	181	296	298	710	81	155	225	249	6	3	1	2	0
Fort Beaufort	1 437	338	355	334	410	740	176	190	170	204	683	155	160	164	204	14	7	5	0	2
Graaff-Reinet	1 642	359	394	415	474	841	186	192	207	256	800	173	202	208	217	1	0	0	0	1
Hankey	582	142	138	141	161	342	86	80	85	91	239	55	58	56	70	1	1	0	0	0
Hewu	2 073	421	473	528	651	1 031	200	249	264	318	1 007	198	218	261	330	35	23	6	3	3
Hofmeyr	116	29	23	32	32	61	18	10	18	15	55	11	13	14	17	0	0	0	0	0
Humansdorp	1 955	448	459	523	525	1 085	262	251	297	275	867	185	208	226	248	3	1	0	0	2
Idutywa	1 105	132	241	360	372	591	74	133	189	195	509	55	107	170	177	5	3	1	1	0
Indwe	550	149	121	137	143	267	69	61	71	66	276	73	60	66	77	7	7	0	0	0
Jansenville	445	84	106	114	141	232	40	52	68	72	213	44	54	46	69	0	0	0	0	0
Joubertina	540	146	118	136	140	322	85	74	79	84	218	61	44	57	56	0	0	0	0	0
Keiskammahoek	1 361	303	291	360	407	692	156	159	181	196	642	125	130	177	210	27	22	2	2	1
Kentani	1 348	140	238	403	567	744	85	139	222	298	582	38	97	181	266	22	17	2	0	3
King William's Town	4 428	863	1 027	1 180	1 358	2 295	471	552	617	655	2 098	375	469	557	697	35	17	6	6	6
Kirkwood	1 075	254	225	277	319	605	144	129	162	170	469	109	96	115	149	1	1	0	0	0
Komga	304	75	68	70	91	172	44	36	43	49	132	31	32	27	42	0	0	0	0	0
Lady Frere	2 860	521	667	799	873	1 421	260	322	389	450	1 396	228	342	406	420	43	33	3	4	3
Lady Grey	468	96	133	138	101	247	47	64	79	57	219	48	69	58	44	2	1	0	1	0
Libode	1 447	191	243	414	599	829	117	153	247	312	614	73	89	167	285	4	1	1	0	2
Lusikisiki	3 948	316	726	1 296	1 610	2 215	202	451	726	836	1 718	108	273	567	770	15	6	2	3	4
Maclear	746	153	193	208	192	384	71	115	100	98	361	81	78	108	94	1	1	0	0	0
Maluti	509	101	70	264	74	254	49	33	140	32	254	52	37	123	42	1	0	0	1	0
Mdantsane	8 481	2 033	2 144	2 111	2 193	4 413	1 045	1 110	1 123	1 135	3 930	890	1 004	982	1 054	138	98	30	6	4
Middelburg	783	183	204	189	207	400	104	110	85	101	383	79	94	104	106	0	0	0	0	0
Middledrift	739	141	151	225	222	366	69	78	115	104	363	66	71	109	117	10	6	2	1	1
Molteno	379	94	89	102	94	189	45	39	57	48	190	49	50	45	46	0	0	0	0	0
Mpofu	176	32	34	58	52	88	13	19	33	23	86	17	15	25	29	2	2	0	0	0
Mqanduli	1 072	46	186	374	466	582	26	123	207	226	483	17	63	167	236	7	3	0	0	4
Mt Ayliff	1 722	241	355	488	638	942	143	199	261	339	775	95	156	226	298	5	3	0	1	1
Mt Fletcher	1 385	250	397	338	400	711	133	215	166	197	673	116	182	172	203	1	1	0	0	0
Mt Frere	2 544	286	609	812	837	1 359	187	322	416	434	1 179	98	284	395	402	6	1	3	1	1

3. RECORDED DEATHS
3.1 PROVINCIAL DEATHS

3.1.1 MAGISTERIAL DISTRICT, SEX AND YEAR OF DEATH (continued)

Province and magisterial district	Total					Male					Female					Unspecified				
	Total	1997	1998	1999	2000	Total	1997	1998	1999	2000	Total	1997	1998	1999	2000	Total	1997	1998	1999	2000
Ngqeleni	1 611	148	368	526	569	909	96	229	288	296	690	49	135	235	271	12	3	4	3	2
Nqamakwe	1 040	100	163	362	415	600	59	102	219	220	436	40	61	142	193	4	1	0	1	2
Ntabathemba	181	16	18	62	85	97	12	10	34	41	82	2	8	28	44	2	2	0	0	0
Pearston	92	25	19	22	26	49	12	11	10	16	43	13	8	12	10	0	0	0	0	0
Peddie	1 731	343	406	463	519	912	175	226	247	264	782	151	170	208	253	37	17	10	8	2
Port Elizabeth	32 789	7 529	7 919	8 213	9 128	17 442	4 126	4 246	4 405	4 665	15 318	3 390	3 668	3 800	4 460	29	13	5	8	3
Port St Johns	613	40	70	144	359	337	27	47	84	179	273	10	23	60	180	3	3	0	0	0
Queenstown	4 309	896	1 083	1 104	1 226	2 175	462	558	560	595	2 112	415	523	543	631	22	19	2	1	0
Qumbu	1 509	207	343	430	529	801	115	183	228	275	704	90	159	202	253	4	2	1	0	1
Somerset East	1 242	297	321	296	328	645	157	169	141	178	597	140	152	155	150	0	0	0	0	0
Sterkspruit	3 137	586	638	859	1 054	1 565	311	319	423	512	1 551	262	314	434	541	21	13	5	2	1
Sterkstroom	279	55	72	75	77	138	24	34	42	38	141	31	38	33	39	0	0	0	0	0
Steynsburg	277	65	63	74	75	119	31	23	31	34	158	34	40	43	41	0	0	0	0	0
Steytlerville	113	22	22	40	29	70	16	11	28	15	43	6	11	12	14	0	0	0	0	0
Stutterheim	1 464	308	328	403	425	746	147	179	206	214	717	160	149	197	211	1	1	0	0	0
Tabankulu	1 091	56	235	374	426	580	31	127	207	215	506	22	107	166	211	5	3	1	1	0
Tarka	580	95	142	170	173	301	51	81	89	80	278	43	61	81	93	1	1	0	0	0
Tsolo	1 795	217	412	498	668	954	124	223	275	332	833	90	185	222	336	8	3	4	1	0
Tsomo	277	57	43	54	123	158	29	30	26	73	114	23	13	28	50	5	5	0	0	0
Uitenhage	6 972	1 529	1 546	1 794	2 103	3 585	797	776	934	1 078	3 383	731	768	859	1 025	4	1	2	1	0
Umtata	7 004	822	1 576	2 069	2 537	3 889	496	900	1 156	1 337	3 083	318	671	901	1 193	32	8	5	12	7
Umzimkulu	2 190	243	417	644	886	1 128	146	245	327	410	1 060	97	171	316	476	2	0	1	1	0
Venterstad	119	17	26	33	43	62	9	14	17	22	57	8	12	16	21	0	0	0	0	0
Victoria East	1 455	277	341	439	398	786	164	167	246	209	634	95	163	190	186	35	18	11	3	3
Willowmore	407	120	104	95	88	227	70	55	55	47	179	49	49	40	41	1	1	0	0	0
Willowvale	544	92	54	84	314	297	47	30	55	165	242	40	24	29	149	5	5	0	0	0
Wodehouse	513	113	114	141	145	260	58	69	62	71	248	52	45	77	74	5	3	0	2	0
Zwelitsha	2 471	501	564	610	796	1 249	268	292	301	388	1 197	216	267	308	406	25	17	5	1	2
Unspecified	29	11	8	3	7	15	8	2	1	4	14	3	6	2	3	0	0	0	0	0

3. RECORDED DEATHS
3.1 PROVINCIAL DEATHS

3.1.1 MAGISTERIAL DISTRICT, SEX AND YEAR OF DEATH (continued)

Province and magisterial district	Total					Male					Female					Unspecified				
	Total	1997	1998	1999	2000	Total	1997	1998	1999	2000	Total	1997	1998	1999	2000	Total	1997	1998	1999	2000
Northern Cape	34 334	7 799	8 367	8 753	9 415	19 037	4 352	4 714	4 869	5 102	15 282	3 440	3 650	3 880	4 312	15	7	3	4	1
Namakwaland	2 061	439	494	551	577	1 288	264	319	347	358	771	174	175	203	219	2	1	0	1	0
Kenhardt	365	89	101	85	90	215	56	54	56	49	150	33	47	29	41	0	0	0	0	0
Gordonia	5 742	1 314	1 449	1 455	1 524	3 270	754	828	833	855	2 467	558	621	620	668	5	2	0	2	1
Calvinia	818	211	210	200	197	455	118	118	110	109	362	93	91	90	88	1	0	1	0	0
Sutherland	123	30	30	31	32	69	15	19	19	16	54	15	11	12	16	0	0	0	0	0
Williston	191	41	61	38	51	104	29	32	20	23	87	12	29	18	28	0	0	0	0	0
Fraserburg	143	40	30	39	34	64	16	14	16	18	79	24	16	23	16	0	0	0	0	0
Victoria-West	492	135	107	124	126	253	70	64	55	64	238	64	43	69	62	1	1	0	0	0
Hopetown	454	105	114	115	120	261	58	64	71	68	193	47	50	44	52	0	0	0	0	0
Britstown	196	51	50	52	43	100	24	29	27	20	96	27	21	25	23	0	0	0	0	0
De Aar	1 492	331	341	389	431	750	174	160	213	203	742	157	181	176	228	0	0	0	0	0
Philipstown	263	66	72	59	66	147	38	37	31	41	116	28	35	28	25	0	0	0	0	0
Richmond	270	81	64	60	65	151	54	30	35	32	119	27	34	25	33	0	0	0	0	0
Hanover	163	39	38	44	42	95	25	25	26	19	68	14	13	18	23	0	0	0	0	0
Colesberg	660	163	158	159	180	351	91	85	81	94	309	72	73	78	86	0	0	0	0	0
Noupoort	298	78	67	84	69	155	43	33	37	42	143	35	34	47	27	0	0	0	0	0
Kuruman	1 490	276	377	397	440	829	158	201	234	236	661	118	176	163	204	0	0	0	0	0
Postmasburg	1 724	377	380	474	493	980	236	231	255	258	744	141	149	219	235	0	0	0	0	0
Hay	331	61	83	90	97	184	35	48	46	55	147	26	35	44	42	0	0	0	0	0
Prieska	847	210	185	230	222	442	106	102	125	109	405	104	83	105	113	0	0	0	0	0
Carnavon	436	115	116	97	108	232	68	61	49	54	204	47	55	48	54	0	0	0	0	0
Herbert	930	193	230	246	261	541	118	132	146	145	388	75	98	99	116	1	0	0	1	0
Barkly West	1 183	275	316	272	320	659	156	179	156	168	523	118	137	116	152	1	1	0	0	0
Warrenton	985	190	252	253	290	523	95	141	135	152	461	94	111	118	138	1	1	0	0	0
Hartswater	1 580	338	391	409	442	892	201	219	229	243	688	137	172	180	199	0	0	0	0	0
Kimberley	11 097	2 551	2 651	2 800	3 095	6 027	1 350	1 489	1 517	1 671	5 067	1 200	1 160	1 283	1 424	3	1	2	0	0

3. RECORDED DEATHS
3.1 PROVINCIAL DEATHS

3.1.1 MAGISTERIAL DISTRICT, SEX AND YEAR OF DEATH (continued)

Province and magisterial district	Total					Male					Female					Unspecified				
	Total	1997	1998	1999	2000	Total	1997	1998	1999	2000	Total	1997	1998	1999	2000	Total	1997	1998	1999	2000
Free State	109 952	23 102	26 520	28 881	31 449	58 492	12 465	14 289	15 428	16 310	51 321	10 590	12 204	13 414	15 113	139	47	27	39	26
Boshof	885	162	188	220	315	460	82	96	120	162	423	79	92	99	153	2	1	0	1	0
Jacobsdal	202	55	53	44	50	117	33	34	29	21	85	22	19	15	29	0	0	0	0	0
Koffiefontein	357	75	94	92	96	195	39	53	51	52	162	36	41	41	44	0	0	0	0	0
Petrusburg	278	56	64	66	92	152	31	39	35	47	126	25	25	31	45	0	0	0	0	0
Fauresmith	196	42	44	51	59	103	24	18	27	34	93	18	26	24	25	0	0	0	0	0
Bloemfontein	20 313	4 746	4 840	5 166	5 561	11 074	2 608	2 632	2 858	2 976	9 196	2 123	2 197	2 299	2 577	43	15	11	9	8
Botshabelo	6 507	1 146	1 587	1 705	2 069	3 207	566	821	812	1 008	3 292	578	765	889	1 060	8	2	1	4	1
Smithfield	347	91	77	99	80	177	54	37	47	39	169	36	40	52	41	1	1	0	0	0
Rouxville	236	56	42	73	65	118	24	27	35	32	118	32	15	38	33	0	0	0	0	0
Bethulie	461	114	110	117	120	236	58	58	58	62	225	56	52	59	58	0	0	0	0	0
Zastron	770	163	202	181	224	395	86	107	96	106	373	76	94	85	118	2	1	1	0	0
Odendaalsrus	4 082	887	1 102	1 070	1 023	2 173	485	615	549	524	1 906	401	487	519	499	3	1	0	2	0
Welkom	9 182	1 995	2 140	2 466	2 581	5 354	1 199	1 253	1 460	1 442	3 823	795	886	1 005	1 137	5	1	1	1	2
Virginia	2 949	568	745	780	856	1 647	323	422	456	446	1 300	245	321	324	410	2	0	2	0	0
Kroonstad	7 317	1 547	1 785	1 888	2 097	3 900	819	1 001	1 010	1 070	3 406	724	781	875	1 026	11	4	3	3	1
Ventersburg	544	140	125	130	149	280	78	71	63	68	264	62	54	67	81	0	0	0	0	0
Hennenman	723	134	148	205	236	408	79	79	116	134	315	55	69	89	102	0	0	0	0	0
Parys	2 289	521	556	632	580	1 179	287	285	324	283	1 108	234	270	307	297	2	0	1	1	0
Vredefort	315	64	71	89	91	176	37	42	52	45	139	27	29	37	46	0	0	0	0	0
Koppies	530	126	113	146	145	282	60	63	77	82	248	66	50	69	63	0	0	0	0	0
Heilbron	1 388	269	337	364	418	743	162	189	188	204	644	107	148	175	214	1	0	0	1	0
Viljoenskroon	1 176	245	291	321	319	647	142	165	164	176	529	103	126	157	143	0	0	0	0	0
Bothaville	1 810	344	475	456	535	912	185	236	231	260	896	159	239	224	274	2	0	0	1	1
Wesselsbron	816	160	176	248	232	430	94	84	136	116	386	66	92	112	116	0	0	0	0	0
Hoopstad	869	174	202	243	250	442	92	102	128	120	427	82	100	115	130	0	0	0	0	0
Bultfontein	921	175	212	248	286	451	90	111	108	142	470	85	101	140	144	0	0	0	0	0
Theunissen	878	165	230	204	279	428	89	117	93	129	446	76	112	109	149	4	0	1	2	1
Bethlehem	4 985	1 210	1 251	1 188	1 336	2 675	659	679	631	706	2 301	547	571	555	628	9	4	1	2	2
Harrismith	2 440	505	577	680	678	1 293	257	310	363	363	1 144	245	267	317	315	3	3	0	0	0
Vrede	1 291	252	351	371	317	646	138	178	178	152	645	114	173	193	165	0	0	0	0	0

3. RECORDED DEATHS

3.1 PROVINCIAL DEATHS

3.1.1 MAGISTERIAL DISTRICT, SEX AND YEAR OF DEATH (continued)

Province and magisterial district	Total					Male					Female					Unspecified				
	Total	1997	1998	1999	2000	Total	1997	1998	1999	2000	Total	1997	1998	1999	2000	Total	1997	1998	1999	2000
Frankfort	1 804	409	450	468	477	944	212	241	249	242	859	197	208	219	235	1	0	1	0	0
Reitz	973	178	257	287	251	493	89	127	148	129	480	89	130	139	122	0	0	0	0	0
Lindley	1 289	258	305	344	382	671	129	159	188	195	618	129	146	156	187	0	0	0	0	0
Senekal	1 535	305	385	434	411	777	153	200	212	212	758	152	185	222	199	0	0	0	0	0
Fouriesburg	331	74	75	86	96	173	37	42	48	46	158	37	33	38	50	0	0	0	0	0
Ficksburg	1 625	336	329	455	505	825	161	168	231	265	799	175	161	223	240	1	0	0	1	0
Thaba Nchu	5 671	1 057	1 253	1 567	1 794	3 052	561	672	852	967	2 604	491	580	710	823	15	5	1	5	4
Brandfort	685	150	166	160	209	371	77	93	97	104	312	72	73	63	104	2	1	0	0	1
Winburg	919	156	228	278	257	483	76	123	144	140	434	80	104	133	117	2	0	1	1	0
Marquard	470	92	126	127	125	240	48	60	70	62	230	44	66	57	63	0	0	0	0	0
Clocolan	919	184	220	253	262	448	86	102	127	133	471	98	118	126	129	0	0	0	0	0
Excelsior	466	94	127	114	131	216	42	63	47	64	250	52	64	67	67	0	0	0	0	0
Ladybrand	1 189	254	309	299	327	620	149	157	154	160	567	105	152	145	165	2	0	0	0	2
Wepener	306	75	66	76	89	164	42	40	44	38	141	33	26	32	50	1	0	0	0	1
Dewetsdorp	361	62	100	101	98	184	31	53	51	49	177	31	47	50	49	0	0	0	0	0
Reddersburg	212	44	42	61	65	105	20	21	31	33	107	24	21	30	32	0	0	0	0	0
Edenburg	418	93	94	106	125	206	53	44	43	66	211	40	50	62	59	1	0	0	1	0
Trompsburg	184	44	39	42	59	98	26	20	26	26	86	18	19	16	33	0	0	0	0	0
Jagersfontein	768	153	197	200	218	400	80	106	113	101	366	73	91	85	117	2	0	0	2	0
Phillippolis	187	40	37	46	64	94	21	21	22	30	92	19	16	23	34	1	0	0	1	0
Sasolburg	2 628	573	621	665	769	1 445	323	334	368	420	1 182	249	287	297	349	1	1	0	0	0
Witsieshoek	11 953	2 284	2 906	3 168	3 595	6 182	1 169	1 519	1 668	1 826	5 759	1 108	1 385	1 499	1 767	12	7	2	1	2
Unspecified	2	0	0	1	1	1	0	0	0	1	1	0	0	1	0	0	0	0	0	
Kwazulu-Natal	285 611	57 824	67 530	75 349	84 908	154 827	32 648	37 553	40 546	44 080	130 076	24 885	29 760	34 660	40 771	708	291	217	143	57
Mapumulu	2 354	493	415	599	847	1 176	253	216	306	401	1 168	234	198	292	444	10	6	1	1	2
Ndwedwe	2 148	378	400	578	792	1 137	212	227	299	399	1 005	163	172	277	393	6	3	1	2	0
Umbumbulu	3 173	593	766	870	944	1 732	336	444	495	457	1 432	254	319	372	487	9	3	3	3	0
Umlazi	9 847	1 712	2 375	2 636	3 124	5 304	1 011	1 289	1 382	1 622	4 501	676	1 080	1 249	1 496	42	25	6	5	6
Durban	46 199	10 964	11 219	12 076	11 940	25 222	6 133	6 236	6 552	6 301	20 929	4 809	4 970	5 514	5 636	48	22	13	10	3

3. RECORDED DEATHS
3.1 PROVINCIAL DEATHS

3.1.1 MAGISTERIAL DISTRICT, SEX AND YEAR OF DEATH (continued)

Province and magisterial district	Total					Male					Female					Unspecified				
	Total	1997	1998	1999	2000	Total	1997	1998	1999	2000	Total	1997	1998	1999	2000	Total	1997	1998	1999	2000
Pinetown	9 361	1 998	2 147	2 269	2 947	5 177	1 153	1 230	1 223	1 571	4 173	839	915	1 044	1 375	11	6	2	2	1
Inanda	15 762	3 044	3 804	4 139	4 775	9 115	1 870	2 266	2 388	2 591	6 626	1 168	1 531	1 744	2 183	21	6	7	7	1
Chatsworth	10 881	2 108	2 358	2 658	3 757	6 004	1 219	1 350	1 444	1 991	4 871	887	1 006	1 213	1 765	6	2	2	1	1
Msinga	3 085	494	726	886	979	1 580	267	394	432	487	1 466	217	318	442	489	39	10	14	12	3
Nkandla	2 836	434	709	819	874	1 446	268	372	392	414	1 386	165	337	424	460	4	1	0	3	0
Nqutu	5 222	1 105	1 193	1 432	1 492	2 689	607	619	729	734	2 524	494	572	701	757	9	4	2	2	1
Mahlabathini	3 970	570	883	1 090	1 427	2 077	328	480	543	726	1 866	232	391	543	700	27	10	12	4	1
Nongoma	4 704	721	1 082	1 336	1 565	2 521	398	583	719	821	2 160	316	493	611	740	23	7	6	6	4
Pietermaritzburg	27 825	5 823	6 506	7 128	8 368	14 612	3 202	3 541	3 666	4 203	13 180	2 608	2 952	3 458	4 162	33	13	13	4	3
Camperdown	3 798	769	874	986	1 169	2 140	456	503	543	638	1 654	312	369	442	531	4	1	2	1	0
Ixopo	4 661	884	1 068	1 252	1 457	2 505	475	589	673	768	2 138	400	474	576	688	18	9	5	3	1
Umzinto	7 110	1 482	1 590	1 836	2 202	3 739	812	834	979	1 114	3 364	667	753	856	1 088	7	3	3	1	0
Richmond	2 212	406	529	574	703	1 276	270	311	326	369	934	136	217	248	333	2	0	1	0	1
Port Shepstone	10 887	2 248	2 556	2 973	3 110	5 911	1 244	1 454	1 624	1 589	4 953	996	1 096	1 343	1 518	23	8	6	6	3
Alfred	4 401	861	963	1 138	1 439	2 342	463	535	607	737	2 049	391	426	531	701	10	7	2	0	1
Mount Currie	5 380	913	1 125	1 441	1 901	3 072	552	682	826	1 012	2 299	357	443	612	887	9	4	0	3	2
Polela	1 395	234	303	433	425	755	129	180	230	216	638	104	123	203	208	2	1	0	0	1
Underberg	306	64	79	94	69	167	38	41	50	38	137	26	36	44	31	2	0	2	0	0
Impendle	806	149	165	264	228	425	85	95	138	107	380	64	70	125	121	1	0	0	1	0
Umvoti	2 912	575	718	798	821	1 607	335	404	443	425	1 298	238	310	354	396	7	2	4	1	0
Kranskop	1 014	175	231	260	348	572	101	131	141	199	441	74	100	118	149	1	0	0	1	0
Lions River	1 484	312	343	394	435	831	180	205	201	245	653	132	138	193	190	0	0	0	0	0
New Hanover	1 545	300	387	415	443	825	168	224	216	217	716	130	162	199	225	4	2	1	0	1
Mooi River	464	97	110	127	130	268	56	63	71	78	195	41	47	56	51	1	0	0	0	1
Kliprivier	10 371	2 008	2 555	2 730	3 078	5 410	1 079	1 345	1 423	1 563	4 919	907	1 199	1 300	1 513	42	22	11	7	2
Weenen	340	102	94	78	66	218	59	71	45	43	118	41	23	32	22	4	2	0	1	1
Estcourt	6 039	1 223	1 452	1 513	1 851	3 229	674	788	806	961	2 764	536	646	696	886	46	13	18	11	4
Bergville	2 808	550	657	846	755	1 467	314	343	435	375	1 326	230	310	406	380	15	6	4	5	0
Newcastle	10 880	2 221	2 637	2 826	3 196	5 729	1 147	1 434	1 547	1 601	5 093	1 045	1 181	1 274	1 593	58	29	22	5	2
Utrecht	1 028	202	247	280	299	564	119	138	148	159	461	82	107	132	140	3	1	2	0	0

3. RECORDED DEATHS
3.1 PROVINCIAL DEATHS

3.1.1 MAGISTERIAL DISTRICT, SEX AND YEAR OF DEATH (continued)

Province and magisterial district	Total					Male					Female					Unspecified				
	Total	1997	1998	1999	2000	Total	1997	1998	1999	2000	Total	1997	1998	1999	2000	Total	1997	1998	1999	2000
Dannhauser	959	162	185	284	328	522	91	103	155	173	433	70	80	129	154	4	1	2	0	1
Dundee	3 100	702	769	783	846	1 721	408	439	413	461	1 375	291	330	369	385	4	3	0	1	0
Glencoe	977	256	258	269	194	549	143	149	143	114	427	112	109	126	80	1	1	0	0	0
Paulpietersburg	1 393	226	292	399	476	712	123	159	202	228	680	103	132	197	248	1	0	1	0	0
Ngotshe	550	94	136	141	179	331	55	80	93	103	218	39	55	48	76	1	0	1	0	0
Vryheid	4 010	891	1 001	983	1 135	2 250	530	571	555	594	1 752	359	429	424	540	8	2	1	4	1
Babanango	270	54	64	96	56	162	39	37	57	29	108	15	27	39	27	0	0	0	0	0
Simdlangentsha	1 600	335	363	407	495	870	194	186	249	241	724	137	175	158	254	6	4	2	0	0
Lower Tugela	6 046	1 303	1 401	1 604	1 738	3 251	703	750	869	929	2 787	599	648	731	809	8	1	3	4	0
Lower Umfolozi	11 611	2 301	2 940	3 073	3 297	6 491	1 366	1 655	1 681	1 789	5 094	922	1 279	1 386	1 507	26	13	6	6	1
Mtonjaneni	2 102	414	545	549	594	1 162	246	308	297	311	931	165	234	250	282	9	3	3	2	1
Eshowe	9 088	1 686	2 202	2 510	2 690	4 848	897	1 179	1 370	1 402	4 195	778	1 001	1 129	1 287	45	11	22	11	1
Mtunzini	4 678	1 006	1 167	1 152	1 353	2 591	587	652	638	714	2 079	414	512	514	639	8	5	3	0	0
Hlabisa	6 410	986	1 541	1 825	2 058	3 505	568	864	997	1 076	2 891	415	674	824	978	14	3	3	4	4
Ubombo	2 206	568	497	584	557	1 199	321	293	316	269	999	243	202	267	287	8	4	2	1	1
Ingwavuma	3 378	621	896	910	951	1 804	360	506	468	470	1 556	249	387	440	480	18	12	3	2	1
Unspecified	25	7	7	6	5	15	4	5	1	5	10	3	2	5	0	0	0	0	0	0
North West	93 677	18 318	21 351	25 056	28 952	51 017	10 228	11 814	13 617	15 358	42 575	8 058	9 516	11 419	13 582	85	32	21	20	12
Vryburg	3 716	780	852	979	1 105	1 992	419	477	517	579	1 721	361	374	460	526	3	0	1	2	0
Kudumane	2 774	498	647	764	865	1 445	250	358	422	415	1 328	247	289	342	450	1	1	0	0	0
Taung	2 976	593	706	815	862	1 566	326	391	432	417	1 402	264	313	382	443	8	3	2	1	2
Ganyesa	1 378	247	295	383	453	744	147	164	201	232	631	100	130	181	220	3	0	1	1	1
Potchefstroom	6 611	1 406	1 592	1 728	1 885	3 629	799	893	968	969	2 976	603	697	760	916	6	4	2	0	0
Ventersdorp	1 396	290	337	363	406	775	169	192	204	210	620	120	145	159	196	1	1	0	0	0
Coligny	463	115	112	116	120	250	60	55	70	65	213	55	57	46	55	0	0	0	0	0
Koster	1 178	219	268	321	370	653	124	153	165	211	525	95	115	156	159	0	0	0	0	0
Lichtenburg	2 396	467	676	651	602	1 353	273	370	371	339	1 043	194	306	280	263	0	0	0	0	0
Delareyville	1 764	278	280	528	678	915	164	136	260	355	846	112	144	268	322	3	2	0	0	1
Wolmaransstad	2 253	481	526	566	680	1 151	239	285	286	341	1 102	242	241	280	339	0	0	0	0	0

3. RECORDED DEATHS
3.1 PROVINCIAL DEATHS

3.1.1 MAGISTERIAL DISTRICT, SEX AND YEAR OF DEATH (continued)

Province and magisterial district	Total					Male					Female					Unspecified				
	Total	1997	1998	1999	2000	Total	1997	1998	1999	2000	Total	1997	1998	1999	2000	Total	1997	1998	1999	2000
Schweizer-Reneke	1 460	266	378	349	467	786	156	214	187	229	673	110	164	161	238	1	0	0	1	0
Bloemhof	861	177	197	217	270	418	86	90	112	130	442	90	107	105	140	1	1	0	0	0
Christiana	739	172	150	194	223	385	86	82	104	113	354	86	68	90	110	0	0	0	0	0
Ditsobotla	4 096	984	990	973	1 149	2 113	528	521	497	567	1 976	455	465	475	581	7	1	4	1	1
Klerksdorp	15 067	3 146	3 634	3 902	4 385	8 360	1 819	2 060	2 132	2 349	6 704	1 327	1 573	1 769	2 035	3	0	1	1	1
Rustenburg	8 059	1 530	1 882	2 179	2 468	4 786	919	1 103	1 279	1 485	3 266	608	777	899	982	7	3	2	1	1
Brits	3 751	644	855	1 061	1 191	2 187	375	504	612	696	1 563	268	351	449	495	1	1	0	0	0
Odi	11 973	2 003	2 261	3 572	4 137	6 411	1 077	1 229	1 969	2 136	5 541	917	1 025	1 600	1 999	21	9	7	3	2
Moretele 1	2 873	526	609	671	1 067	1 473	282	302	322	567	1 397	243	307	349	498	3	1	0	0	2
Marico	1 465	276	363	379	447	837	149	212	213	263	628	127	151	166	184	0	0	0	0	0
Swartruggens	354	113	74	65	102	199	63	39	35	62	155	50	35	30	40	0	0	0	0	0
Mankwe	4 191	853	1 021	1 103	1 214	2 220	474	541	585	620	1 963	377	479	513	594	8	2	1	5	0
Bafokeng	1 036	240	252	274	270	584	145	140	146	153	452	95	112	128	117	0	0	0	0	0
Lehurutshe	1 665	365	479	452	369	896	206	265	230	195	768	159	214	221	174	1	0	0	1	0
Madikwe	1 530	319	297	380	534	806	177	167	200	262	723	142	130	180	271	1	0	0	0	1
Molopo	7 652	1 330	1 618	2 071	2 633	4 083	716	871	1 098	1 398	3 563	611	747	970	1 235	6	3	0	3	0
Gauteng	246 906	55 644	61 097	62 553	67 612	139 137	32 211	34 802	35 187	36 937	107 560	23 353	26 238	27 319	30 650	209	80	57	47	25
Germiston	2 109	460	539	514	596	1 145	241	296	269	339	964	219	243	245	257	0	0	0	0	0
Alberton	3 919	445	793	1 220	1 461	2 324	279	493	729	823	1 594	166	300	490	638	1	0	0	1	0
Boksburg	9 562	1 891	2 328	2 561	2 782	5 290	1 100	1 285	1 408	1 497	4 268	788	1 043	1 152	1 285	4	3	0	1	0
Kempton Park	9 769	1 756	2 283	2 715	3 015	5 725	1 098	1 372	1 609	1 646	4 039	657	911	1 102	1 369	5	1	0	4	0
Benoni	799	183	188	247	181	447	93	104	150	100	352	90	84	97	81	0	0	0	0	0
Brakpan	14 402	3 087	3 289	3 832	4 194	8 005	1 747	1 861	2 124	2 273	6 390	1 335	1 428	1 707	1 920	7	5	0	1	1
Springs	7 764	1 652	1 792	2 075	2 245	4 228	957	966	1 163	1 142	3 529	694	824	909	1 102	7	1	2	3	1
Nigel	2 350	543	556	582	669	1 313	308	314	321	370	1 035	235	241	261	298	2	0	1	0	1
Heidelberg	9 782	1 925	2 363	2 556	2 938	5 699	1 122	1 403	1 493	1 681	4 082	802	960	1 063	1 257	1	1	0	0	0
Krugersdorp	10 287	2 343	2 573	2 716	2 655	5 740	1 364	1 419	1 460	1 497	4 540	975	1 152	1 255	1 158	7	4	2	1	0
Roodepoort	4 720	980	1 176	1 192	1 372	2 754	633	672	673	776	1 963	347	502	518	596	3	0	2	1	0
Westonaria	1 673	364	460	463	386	1 119	247	329	304	239	552	117	131	158	146	2	0	0	1	1

3. RECORDED DEATHS
3.1 PROVINCIAL DEATHS

3.1.1 MAGISTERIAL DISTRICT, SEX AND YEAR OF DEATH (continued)

Province and magisterial district	Total					Male					Female					Unspecified				
	Total	1997	1998	1999	2000	Total	1997	1998	1999	2000	Total	1997	1998	1999	2000	Total	1997	1998	1999	2000
Randfontein	3 950	675	868	1 045	1 362	2 358	398	530	635	795	1 585	274	336	409	566	7	3	2	1	1
Oberholzer	4 350	989	1 137	1 045	1 179	2 738	665	739	623	711	1 610	324	397	421	468	2	0	1	1	0
Bronkhorstspuit	1 057	247	266	261	283	663	160	165	178	160	393	86	101	83	123	1	1	0	0	0
Cullinan	482	108	115	110	149	320	69	80	72	99	161	38	35	38	50	1	1	0	0	0
Vereeniging	8 370	1 744	2 015	2 183	2 428	4 784	1 032	1 139	1 271	1 342	3 577	709	872	910	1 086	9	3	4	2	0
Vanderbijlpark	16 059	3 406	3 794	4 187	4 672	8 729	1 969	2 041	2 288	2 431	7 299	1 425	1 746	1 891	2 237	31	12	7	8	4
Pretoria	41 696	10 442	11 231	9 919	10 104	23 401	5 929	6 379	5 546	5 547	18 257	4 501	4 840	4 365	4 551	38	12	12	8	6
Wonderboom	2 318	581	543	557	637	1 268	346	300	295	327	1 046	234	240	262	310	4	1	3	0	0
Soshanguve	2 420	371	530	672	847	1 200	169	259	350	422	1 216	201	271	322	422	4	1	0	0	3
Johannesburg	83 423	20 238	20 790	20 544	21 851	46 725	11 587	11 828	11 483	11 827	36 626	8 620	8 942	9 047	10 017	72	31	20	14	7
Randburg	5 499	1 208	1 450	1 296	1 545	3 085	692	817	706	870	2 413	516	632	590	675	1	0	1	0	0
Unspecified	146	6	18	61	61	77	6	11	37	23	69	0	7	24	38	0	0	0	0	0
Mpumalanga	85 755	17 771	20 370	22 601	25 013	47 318	10 120	11 374	12 436	13 388	38 343	7 618	8 970	10 141	11 614	94	33	26	24	11
Amersfoort	938	188	247	239	264	514	110	136	124	144	424	78	111	115	120	0	0	0	0	0
Balfour	856	197	227	198	234	481	123	123	101	134	373	73	104	96	100	2	1	0	1	0
Barberton	2 620	583	564	692	781	1 577	350	357	409	461	1 040	232	207	281	320	3	1	0	2	0
Belfast	1 028	225	234	250	319	599	127	145	145	182	429	98	89	105	137	0	0	0	0	0
Bethal	2 575	576	638	636	725	1 413	330	334	359	390	1 159	243	304	277	335	3	3	0	0	0
Carolina	1 266	271	329	311	355	691	153	184	171	183	574	117	145	140	172	1	1	0	0	0
Delmas	1 661	378	377	445	461	973	235	222	260	256	687	143	155	184	205	1	0	0	1	0
Eerstehoek	3 388	630	742	980	1 036	1 663	339	384	473	467	1 715	286	355	505	569	10	5	3	2	0
Ermelo	4 927	1 018	1 165	1 291	1 453	2 614	539	624	669	782	2 312	478	541	622	671	1	1	0	0	0
Groblersdal	1 435	350	391	332	362	825	201	220	195	209	608	148	171	136	153	2	1	0	1	0
Highveld Ridge	4 402	884	1 026	1 172	1 320	2 651	568	613	700	770	1 750	315	413	472	550	1	1	0	0	0
Kriel	319	90	56	77	96	204	57	37	51	59	114	33	19	25	37	1	0	0	1	0
Kwamhlanga	2 833	520	662	841	810	1 545	299	377	463	406	1 284	220	284	376	404	4	1	1	2	0
Lydenburg	2 190	471	569	575	575	1 229	257	313	322	337	953	210	253	252	238	8	4	3	1	0
Mbibana	697	150	193	162	192	342	72	96	71	103	353	77	97	90	89	2	1	0	1	0
Mdutfjana	2 072	436	468	527	641	1 090	249	238	281	322	977	187	228	246	316	5	0	2	0	3

3. RECORDED DEATHS
3.1 PROVINCIAL DEATHS

3.1.1 MAGISTERIAL DISTRICT, SEX AND YEAR OF DEATH (continued)

Province and magisterial district	Total					Male					Female					Unspecified				
	Total	1997	1998	1999	2000	Total	1997	1998	1999	2000	Total	1997	1998	1999	2000	Total	1997	1998	1999	2000
Middelburg	4 571	978	1 173	1 143	1 277	2 663	593	701	667	702	1 906	384	472	475	575	2	1	0	1	0
Mkobola	1 929	431	448	458	592	1 012	234	242	231	305	911	196	205	225	285	6	1	1	2	2
Moretele II	7 649	1 644	1 996	2 089	1 920	4 063	871	1 089	1 121	982	3 580	772	905	967	936	6	1	2	1	2
Moutse	4 581	958	1 170	1 194	1 259	2 411	525	604	638	644	2 162	432	562	555	613	8	1	4	1	2
Nelspruit	4 141	912	944	1 142	1 143	2 393	539	545	651	658	1 745	371	398	491	485	3	2	1	0	0
Nkomazi	4 176	624	963	1 173	1 416	2 238	315	514	679	730	1 935	309	448	493	685	3	0	1	1	1
Nsikazi	6 755	1 339	1 373	1 772	2 271	3 530	719	762	878	1 171	3 212	615	608	890	1 099	13	5	3	4	1
Pelgrimsrus	2 193	553	514	515	611	1 152	292	273	270	317	1 039	260	240	245	294	2	1	1	0	0
Piet Retief	3 426	630	822	953	1 021	1 887	373	435	531	548	1 536	256	385	422	473	3	1	2	0	0
Standerton	3 386	712	857	875	942	1 908	407	488	500	513	1 478	305	369	375	429	0	0	0	0	0
Volksrus	1 404	316	326	353	409	788	187	192	206	203	616	129	134	147	206	0	0	0	0	0
Wakkerstroom	449	108	91	85	165	255	70	54	42	89	194	38	37	43	76	0	0	0	0	0
Waterval-Boven	357	73	84	118	82	200	50	43	63	44	157	23	41	55	38	0	0	0	0	0
Witbank	6 769	1 364	1 541	1 779	2 085	3 928	831	908	1 037	1 152	2 838	533	632	740	933	3	0	1	2	0
Witrivier	762	162	180	224	196	479	105	121	128	125	282	57	58	96	71	1	0	1	0	0
Northern Province	87 860	18 327	22 498	22 232	24 803	46 259	9 917	11 766	11 645	12 931	41 350	8 310	10 649	10 547	11 844	251	100	83	40	28
Bochum	2 880	700	846	595	739	1 480	362	427	311	380	1 393	336	417	281	359	7	2	2	3	0
Bolobedu	1 890	466	187	588	649	973	226	115	323	309	909	235	71	263	340	8	5	1	2	0
Dzanani	1 140	127	270	318	425	561	72	135	158	196	578	55	135	159	229	1	0	0	1	0
Ellisras	667	138	160	163	206	397	85	99	93	120	269	53	60	70	86	1	0	1	0	0
Giyani	3 794	638	1 010	972	1 174	1 952	346	508	486	612	1 839	291	501	486	561	3	1	1	0	1
Hlanganani	405	90	166	86	63	195	40	80	43	32	210	50	86	43	31	0	0	0	0	0
Letaba	5 375	1 608	2 139	798	830	2 782	827	1 081	445	429	2 558	759	1 045	353	401	35	22	13	0	0
Lulekani	393	67	89	110	127	224	34	56	60	74	163	32	32	48	51	6	1	1	2	2
Malamulele	2 220	341	578	609	692	1 096	179	289	300	328	1 122	162	287	309	364	2	0	2	0	0
Mapulaneng	4 256	680	988	1 212	1 376	2 239	354	537	640	708	2 011	324	450	571	666	6	2	1	1	2
Messina	633	134	141	166	192	364	83	81	90	110	268	51	59	76	82	1	0	1	0	0
Mhala	2 739	412	571	806	950	1 480	231	326	440	483	1 256	180	243	366	467	3	1	2	0	0
Mokerong	3 800	899	849	856	1 196	2 000	480	452	452	616	1 797	418	396	403	580	3	1	1	1	0
Mutale	579	79	129	170	201	271	36	65	74	96	306	42	64	95	105	2	1	0	1	0

3. RECORDED DEATHS

3.1 PROVINCIAL DEATHS

3.1.1 MAGISTERIAL DISTRICT, SEX AND YEAR OF DEATH (concluded)

Province and magisterial district	Total					Male					Female					Unspecified				
	Total	1997	1998	1999	2000	Total	1997	1998	1999	2000	Total	1997	1998	1999	2000	Total	1997	1998	1999	2000
Namakgale	981	203	242	241	295	534	115	124	146	149	447	88	118	95	146	0	0	0	0	0
Naphuno	1 411	202	206	469	534	719	112	100	236	271	677	88	101	228	260	15	2	5	5	3
Nebo	6 323	1 306	1 581	1 652	1 784	3 279	709	801	885	884	3 016	590	768	763	895	28	7	12	4	5
Phalaborwa	1 018	232	223	304	259	592	131	128	176	157	423	99	95	127	102	3	2	0	1	0
Pietersburg	7 696	1 862	2 205	1 776	1 853	4 320	1 083	1 233	953	1 051	3 355	764	967	822	802	21	15	5	1	0
Potgietersrus	7 833	1 841	2 059	1 999	1 934	4 166	1 011	1 082	1 046	1 027	3 646	821	969	952	904	21	9	8	1	3
Ritavi	1 760	223	195	654	688	941	115	102	348	376	817	108	93	306	310	2	0	0	0	2
Sekgosese	1 385	300	304	371	410	700	140	166	189	205	684	159	138	182	205	1	1	0	0	0
Sekhukhuleni	4 311	927	1 153	1 002	1 229	2 056	445	546	471	594	2 222	473	595	522	632	33	9	12	9	3
Seshego	4 185	939	1 155	912	1 179	2 174	498	586	464	626	2 005	437	568	448	552	6	4	1	0	1
Soutpansberg	4 118	890	1 008	1 088	1 132	2 219	516	552	548	603	1 893	373	452	539	529	6	1	4	1	0
Thabamopo	4 649	973	1 216	1 192	1 268	2 360	482	615	604	659	2 278	485	598	588	607	11	6	3	0	2
Thabazimbi	955	181	211	249	314	667	133	140	169	225	288	48	71	80	89	0	0	0	0	0
Thohoyandou	5 519	804	1 343	1 605	1 767	2 789	448	641	806	894	2 714	350	699	795	870	16	6	3	4	3
Vuwani	1 061	156	228	297	380	484	80	92	136	176	572	74	135	160	203	5	2	1	1	1
Warmbad	2 222	530	594	543	555	1 279	314	348	301	316	941	216	245	241	239	2	0	1	1	0
Waterberg	1 574	357	415	414	388	924	221	241	245	217	649	136	173	169	171	1	0	1	0	0
Unspecified	88	22	37	15	14	42	9	18	7	8	44	13	18	7	6	2	0	1	1	0
Province unspecified	15 771	2 260	2 923	4 733	5 855	8 223	1 230	1 532	2 468	2 993	7 504	1 011	1 382	2 255	2 856	44	19	9	10	6
Total Foreigners	1 412	307	333	385	387	939	197	233	257	252	470	108	99	128	135	3	2	1	0	0